

Form 3160-3
(June 2015)FORM APPROVED
OMB No. 1004-0137
Expires: January 31, 2018

UNITED STATES
DEPARTMENT OF THE INTERIOR
BUREAU OF LAND MANAGEMENT
APPLICATION FOR PERMIT TO DRILL OR REENTER

1a. Type of work: <input type="checkbox"/> DRILL <input type="checkbox"/> REENTER 1b. Type of Well: <input type="checkbox"/> Oil Well <input type="checkbox"/> Gas Well <input type="checkbox"/> Other 1c. Type of Completion: <input type="checkbox"/> Hydraulic Fracturing <input type="checkbox"/> Single Zone <input type="checkbox"/> Multiple Zone		5. Lease Serial No. 6. If Indian, Allottee or Tribe Name 7. If Unit or CA Agreement, Name and No. 8. Lease Name and Well No. <div style="text-align: center; font-weight: bold; font-size: 1.2em;">[300545]</div>
2. Name of Operator <div style="text-align: center; font-weight: bold; font-size: 1.2em;">[162683]</div>		9. API Well No. <div style="text-align: center; font-weight: bold; font-size: 1.2em;">30-025-48443</div>
3a. Address	3b. Phone No. (include area code)	10. Field and Pool, or Exploratory <div style="text-align: center; font-weight: bold; font-size: 1.2em;">[98094]</div>
4. Location of Well (Report location clearly and in accordance with any State requirements. *) At surface At proposed prod. zone		11. Sec., T. R. M. or Blk. and Survey or Area
14. Distance in miles and direction from nearest town or post office*		12. County or Parish 13. State
15. Distance from proposed* location to nearest property or lease line, ft. (Also to nearest drig. unit line, if any)	16. No of acres in lease	17. Spacing Unit dedicated to this well
18. Distance from proposed location* to nearest well, drilling, completed, applied for, on this lease, ft.	19. Proposed Depth	20. BLM/BIA Bond No. in file
21. Elevations (Show whether DF, KDB, RT, GL, etc.)	22. Approximate date work will start*	23. Estimated duration
24. Attachments		

The following, completed in accordance with the requirements of Onshore Oil and Gas Order No. 1, and the Hydraulic Fracturing rule per 43 CFR 3162.3-3 (as applicable)

- | | |
|---|---|
| 1. Well plat certified by a registered surveyor.
2. A Drilling Plan.
3. A Surface Use Plan (if the location is on National Forest System Lands, the SUPO must be filed with the appropriate Forest Service Office). | 4. Bond to cover the operations unless covered by an existing bond on file (see Item 20 above).
5. Operator certification.
6. Such other site specific information and/or plans as may be requested by the BLM. |
|---|---|

25. Signature	Name (Printed/Typed)	Date
Title		
Approved by (Signature)	Name (Printed/Typed)	Date
Title		
Office		

Application approval does not warrant or certify that the applicant holds legal or equitable title to those rights in the subject lease which would entitle the applicant to conduct operations thereon.
 Conditions of approval, if any, are attached.

Title 18 U.S.C. Section 1001 and Title 43 U.S.C. Section 1212, make it a crime for any person knowingly and willfully to make to any department or agency of the United States any false, fictitious or fraudulent statements or representations as to any matter within its jurisdiction.

GCP Rec 011/27/2021

SL

(Continued on page 2)



Approval Date: 09/11/2020

KZ
02/03/2021

*(Instructions on page 2)

INSTRUCTIONS

GENERAL: This form is designed for submitting proposals to perform certain well operations, as indicated on Federal and Indian lands and leases for action by appropriate Federal agencies, pursuant to applicable Federal laws and regulations. Any necessary special instructions concerning the use of this form and the number of copies to be submitted, particularly with regard to local, area, or regional procedures and practices, either are shown below or will be issued by, or may be obtained from local Federal offices.

ITEM I: If the proposal is to redrill to the same reservoir at a different subsurface location or to a new reservoir, use this form with appropriate notations. Consult applicable Federal regulations concerning subsequent work proposals or reports on the well.

ITEM 4: Locations on Federal or Indian land should be described in accordance with Federal requirements. Consult local Federal offices for specific instructions.

ITEM 14: Needed only when location of well cannot readily be found by road from the land or lease description. A plat, or plats, separate or on the reverse side, showing the roads to, and the surveyed location of, the well, and any other required information, should be furnished when required by Federal agency offices.

ITEMS 15 AND 18: If well is to be, or has been directionally drilled, give distances for subsurface location of hole in any present or objective productive zone.

ITEM 22: Consult applicable Federal regulations, or appropriate officials, concerning approval of the proposal before operations are started.

ITEM 24: If the proposal will involve hydraulic fracturing operations, you must comply with 43 CFR 3162.3-3, including providing information about the protection of usable water. Operators should provide the best available information about all formations containing water and their depths. This information could include data and interpretation of resistivity logs run on nearby wells. Information may also be obtained from state or tribal regulatory agencies and from local BLM offices.

NOTICES

The Privacy Act of 1974 and regulation in 43 CFR 2.48(d) provide that you be furnished the following information in connection with information required by this application.

AUTHORITY: 30 U.S.C. 181 et seq., 25 U.S.C. 396; 43 CFR 3160

PRINCIPAL PURPOSES: The information will be used to: (1) process and evaluate your application for a permit to drill a new oil, gas, or service well or to reenter a plugged and abandoned well; and (2) document, for administrative use, information for the management, disposal and use of National Resource Lands and resources including (a) analyzing your proposal to discover and extract the Federal or Indian resources encountered; (b) reviewing procedures and equipment and the projected impact on the land involved; and (c) evaluating the effects of the proposed operation on the surface and subsurface water and other environmental impacts.

ROUTINE USE: Information from the record and/or the record will be transferred to appropriate Federal, State, and local or foreign agencies, when relevant to civil, criminal or regulatory investigations or prosecution, in connection with congressional inquiries and for regulatory responsibilities.

EFFECT OF NOT PROVIDING INFORMATION: Filing of this application and disclosure of the information is mandatory only if you elect to initiate a drilling or reentry operation on an oil and gas lease.

The Paperwork Reduction Act of 1995 requires us to inform you that:

The BLM connects this information to a new evaluation of the technical, safety, and environmental factors involved with drilling for oil and/or gas on Federal and Indian oil and gas leases. This information will be used to analyze and approve applications. Response to this request is mandatory only if the operator elects to initiate drilling or reentry operations on an oil and gas lease. The BLM would like you to know that you do not have to respond to this or any other Federal agency-sponsored information collection unless it displays a currently valid OMB control number.

BURDEN HOURS STATEMENT: Public reporting burden for this form is estimated to average 8 hours per response, including the time for reviewing instructions, gathering and maintaining data, and completing and reviewing the form. Direct comments regarding the burden estimate or any other aspect of this form to U.S. Department of the Interior, Bureau of Land Management (1004-0137), Bureau Information Connection Clearance Officer (WO-630), 1849 C Street, N.W., Mail Stop 401 LS, Washington, D.C. 20240.

Additional Operator Remarks

Location of Well

1. SHL: NENE / 448 FNL / 850 FEL / TWSP: 25S / RANGE: 33E / SECTION: 33 / LAT: 32.093045 / LONG: -103.571496 (TVD: 0 feet, MD: 0 feet)
PPP: NESE / 1320 FSL / 331 FEL / TWSP: 25S / RANGE: 33E / SECTION: 4 / LAT: 32.068889 / LONG: -103.569786 (TVD: 12282 feet, MD: 20884 feet)
PPP: NENE / 0 FSL / 336 FEL / TWSP: 25S / RANGE: 33E / SECTION: 33 / LAT: 32.079772 / LONG: -103.5698 (TVD: 12291 feet, MD: 16925 feet)
BHL: SESE / 100 FSL / 330 FEL / TWSP: 26S / RANGE: 33E / SECTION: 4 / LAT: 32.065535 / LONG: -103.569782 (TVD: 12280 feet, MD: 22104 feet)

BLM Point of Contact

Name: Priscilla Perez

Title: Legal Instruments Examiner

Phone: 5752345934

Email: pperez@blm.gov

Review and Appeal Rights

A person contesting a decision shall request a State Director review. This request must be filed within 20 working days of receipt of the Notice with the appropriate State Director (see 43 CFR 3165.3). The State Director review decision may be appealed to the Interior Board of Land Appeals, 801 North Quincy Street, Suite 300, Arlington, VA 22203 (see 43 CFR 3165.4). Contact the above listed Bureau of Land Management office for further information.

CONFIDENTIAL

District I
1625 N. French Dr., Hobbs, NM 88240
Phone: (575) 393-6161 Fax: (575) 393-0720
District II
811 S. First St., Artesia, NM 88210
Phone: (575) 748-1283 Fax: (575) 748-9720
District III
1000 Rio Brazos Road, Aztec, NM 87410
Phone: (505) 334-6178 Fax: (505) 334-6170
District IV
1220 S. St. Francis Dr., Santa Fe, NM 87505
Phone: (505) 476-3460 Fax: (505) 476-3462

State of New Mexico
Energy, Minerals & Natural Resources Department
OIL CONSERVATION DIVISION
1220 South St. Francis Dr.
Santa Fe, NM 87505

Form C-102
Revised August 1, 2011
Submit one copy to appropriate
District Office

☐ AMENDED REPORT

WELL LOCATION AND ACREAGE DEDICATION PLAT

¹ API Number 30-025 48443		² Pool Code 98094	³ Pool Name BOBCAT DRAW; UPPER WOLFCAMP
⁴ Property Code 300545	⁵ Property Name RED HILLS UNIT		⁶ Well Number 21H
⁷ GRID No. 162683	⁸ Operator Name CIMAREX ENERGY CO. OF COLORADO		⁹ Elevation 3341.4'

¹⁰Surface Location

UL or lot no.	Section	Township	Range	Lot Idn	Feet from the	North/South line	Feet from the	East/West line	County
A	33	25S	33E		448	NORTH	850	EAST	LEA

¹¹Bottom Hole Location If Different From Surface

UL or lot no.	Section	Township	Range	Lot Idn	Feet from the	North/South line	Feet from the	East/West line	County
P	4	26S	33E		100	SOUTH	330	EAST	LEA
¹² Dedicated Acres 640	¹³ Joint or Infill	¹⁴ Consolidation Code	¹⁵ Order No.						

No allowable will be assigned to this completion until all interests have been consolidated or a non-standard unit has been approved by the division.

¹⁶ NOTE:

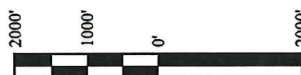
- Distances referenced on plat to section lines are perpendicular.
- Basis of Bearing is a Transverse Mercator Projection with a Central Meridian of W103°53'00"

NAD 83 (SURFACE HOLE LOCATION)
LATITUDE = 32°05'34.96" (32.093043°)
LONGITUDE = 103°34'17.39" (103.571496°)
NAD 27 (SURFACE HOLE LOCATION)
LATITUDE = 32°05'34.51" (32.092920°)
LONGITUDE = 103°34'15.69" (103.571026°)
STATE PLANE NAD 83 (N.M. EAST)
N: 398419.79' E: 777262.28'
STATE PLANE NAD 27 (N.M. EAST)
N: 398362.18' E: 736075.74'

NAD 83 (LP/FTP)
LATITUDE = 32°05'34.95" (32.093041°)
LONGITUDE = 103°34'11.35" (103.569818°)
NAD 27 (LP/FTP)
LATITUDE = 32°05'34.50" (32.092916°)
LONGITUDE = 103°34'09.65" (103.569348°)
STATE PLANE NAD 83 (N.M. EAST)
N: 398422.13' E: 777781.88'
STATE PLANE NAD 27 (N.M. EAST)
N: 398364.53' E: 736595.36'

NAD 83 (BHL/LTP)
LATITUDE = 32°03'55.93" (32.065535°)
LONGITUDE = 103°34'11.21" (103.569782°)
NAD 27 (BHL/LTP)
LATITUDE = 32°03'55.48" (32.065410°)
LONGITUDE = 103°34'09.53" (103.569313°)
STATE PLANE NAD 83 (N.M. EAST)
N: 398415.95' E: 777863.95'
STATE PLANE NAD 27 (N.M. EAST)
N: 398358.60' E: 736676.94'

LINE TABLE		
LINE	DIRECTION	LENGTH
L1	N89°58'50"E	519.72'

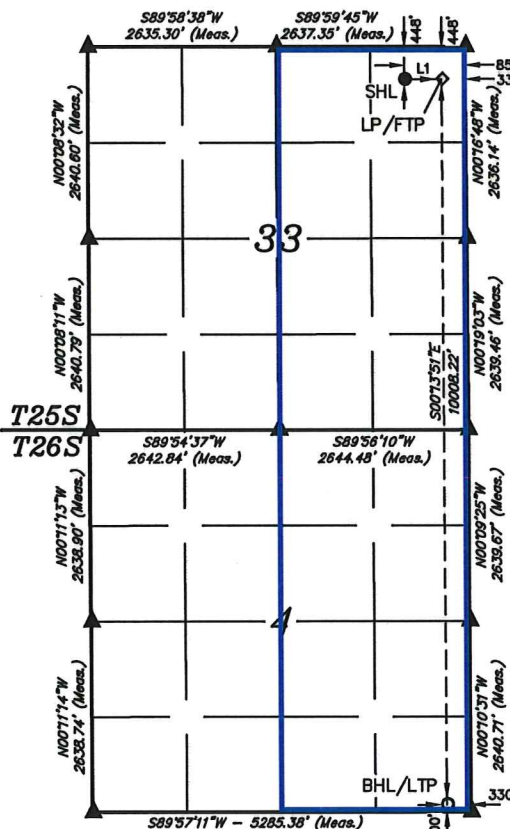


SCALE

DRAWN BY: S.F. 06-07-17

REV: 1 08-08-19 C.IVIE (LATERAL CHANGE)

- = SURFACE HOLE LOCATION
- = BOTTOM HOLE LOCATION/LAST TAKE POINT
- ▲ = SECTION CORNER LOCATED
- ◆ = LANDING POINT/FIRST TAKE POINT



¹⁷ OPERATOR
CERTIFICATION

I hereby certify that the information contained herein is true and complete to the best of my knowledge and belief, and that this organization either owns a working interest or unleased mineral interest in the land including the proposed bottom hole location or has a right to drill this well at this location pursuant to a contract with an owner of such a mineral or working interest, or to a voluntary pooling agreement or a compulsory pooling order heretofore entered by the division.

Signature: *Hope Knauls* Date: 10/24/19

Printed Name
Hope Knauls

hknauls@cimarex.com
E-mail Address

¹⁸ SURVEYOR
CERTIFICATION

I hereby certify that the well location shown on this plat was plotted from field notes of actual surveys made by me or under my supervision, and that the same is true and correct to the best of my belief.

May 05, 2017

Date of Survey
Signature and Seal of Professional Surveyor:



Certificate Number:

District I
1625 N. French Dr., Hobbs, NM 88240
District II
811 S. First St., Artesia, NM 88210
District III
1000 Rio Brazos Road, Aztec, NM 87410
District IV
1220 S. St. Francis Dr., Santa Fe, NM 87505

State of New Mexico
Energy, Minerals and Natural Resources Department
Oil Conservation Division
1220 South St. Francis Dr.
Santa Fe, NM 87505

Submit Original
to Appropriate
District Office

GAS CAPTURE PLAN

Date: 10/25/2019

☒ Original Operator & OGRID No.: Cimarex Energy Co of Colorado- 162683
☐ Amended - Reason for Amendment: _____

This Gas Capture Plan outlines actions to be taken by the Operator to reduce well/production facility flaring/venting for new completion (new drill, recomple to new zone, re-frac) activity.

Note: Form C-129 must be submitted and approved prior to exceeding 60 days allowed by Rule (Subsection A of 19.15.18.12 NMAC).

Well(s)/Production Facility – Name of facility

The well(s) that will be located at the production facility are shown in the table below.

Well Name	API	Well Location (ULSTR)	Footages	Expected MCF/D	Flared or Vented	Comments
Red Hills Unit 21H	30-025-48443	A; 33-25S-33E	448' FNL & 850' FEL	4000		

Gathering System and Pipeline Notification

Well(s) will be connected to a production facility after flowback operations are complete, if gas transporter system is in place. The gas produced from production facility is dedicated to Enlink and will be connected to Enlink low/high pressure gathering system located in Lea County, New Mexico. It will require (no additional feet) of pipeline to connect the facility to low/high pressure gathering system. Cimarex provides (periodically) to Enlink a drilling, completion and estimated first production date for wells that are scheduled to be drilled in the foreseeable future. In addition, Cimarex and Enlink have periodic conference calls to discuss changes to drilling and completion schedules. Gas from these wells will be processed at EnLink Lobo Processing Plant located in Sec 30, BLk 29 Loving Co, TX. The actual flow of the gas will be based on compression operating parameters and gathering system pressures.

Flowback Strategy

After the fracture treatment/completion operations, well(s) will be produced to temporary production tanks and gas will be flared or vented. During flowback, the fluids and sand content will be monitored. When the produced fluids contain minimal sand, the wells will be turned to production facilities. Gas sales should start as soon as the wells start flowing through the production facilities, unless there are operational issues on Enlink system at that time. Based on current information, it is Cimarex's belief the system can take this gas upon completion of the well(s).

Safety requirements during cleanout operations from the use of underbalanced air cleanout systems may necessitate that sand and non-pipeline quality gas be vented and/or flared rather than sold on a temporary basis.

Alternatives to Reduce Flaring

Below are alternatives considered from a conceptual standpoint to reduce the amount of gas flared.

- Power Generation – On lease
 - Only a portion of gas is consumed operating the generator, remainder of gas will be flared
- Compressed Natural Gas – On lease
 - Gas flared would be minimal, but might be uneconomical to operate when gas volume declines
- NGL Removal – On lease
 - Plants are expensive, residue gas is still flared, and uneconomical to operate when gas volume declines

1. Geological Formations

TVD of target 12,280

Pilot Hole TD N/A

MD at TD 22,104

Deepest expected fresh water

Formation	Depth (TVD) from KB	Water/Mineral Bearing/Target Zone	Hazards
Rustler	926	N/A	
Top Salt	1254	N/A	
Base Salt	4684	N/A	
Lamar	4890	N/A	
Bell Canyon	4919	N/A	
Cherry Canyon	6014	N/A	
Brushy Canyon	7578	N/A	
1st Bone Spring Carb	9011	N/A	
Leonard Shale	9068	N/A	
*Avalon Shale	9316	N/A	
1st Bone Spring Sandstone	10033	N/A	
2nd Bone Spring Carb	10226	N/A	
2nd Bone Spring Sandstone	10581	N/A	
3rd Bone Spring Carb	11017	N/A	
3rd Bone Spring Sandstone	11693	N/A	
Top Wolfcamp	12127	N/A	
Wolfcamp X Sandstone	12152	N/A	
Wolfcamp Y Sandstone	12234	N/A	
Wolfcamp A1	12300	N/A	
Wolfcamp A2	12856	N/A	

2. Casing Program

Hole Size	Casing Depth From	Casing Depth To	Setting Depth TVD	Casing Size	Weight (lb/ft)	Grade	Conn.	SF Collapse	SF Burst	SF Tension
14 3/4	0	976	976	10-3/4"	40.50	J-55	BT&C	3.54	7.01	15.91
9 7/8	0	12448	12251	7-5/8"	29.70	L-80	BT&C	2.50	1.20	1.82
6 3/4	0	11823	11823	5-1/2"	20.00	L-80	LT&C	1.15	1.20	1.88
6 3/4	11823	22105	12280	5"	18.00	P-110	BT&C	1.69	1.71	70.51
BLM Minimum Safety Factor								1.125	1	1.6 Dry 1.8 Wet

TVD was used on all calculations.

All casing strings will be tested in accordance with Onshore Oil and Gas Order #2 III.B.1.h

Request Variance for 5-1/2" x 7-5/8" annular clearance. The portion that does not meet clearance will not be cemented

Cimarex Energy Co., Red Hills Unit #21H

	Y or N
Is casing new? If used, attach certification as required in Onshore Order #1	Y
Does casing meet API specifications? If no, attach casing specification sheet.	Y
Is premium or uncommon casing planned? If yes attach casing specification sheet.	N
Does the above casing design meet or exceed BLM's minimum standards? If not provide justification (loading assumptions, casing design criteria).	Y
Will the intermediate pipe be kept at a minimum 1/3 fluid filled to avoid approaching the collapse pressure rating of the casing?	Y
Is well located within Capitan Reef?	N
If yes, does production casing cement tie back a minimum of 50' above the Reef?	N
Is well within the designated 4 string boundary.	N
Is well located in SOPA but not in R-111-P?	N
If yes, are the first 2 strings cemented to surface and 3rd string cement tied back 500' into previous casing?	N
Is well located in R-111-P and SOPA?	N
If yes, are the first three strings cemented to surface?	N
Is 2nd string set 100' to 600' below the base of salt?	N
Is well located in high Cave/Karst?	N
If yes, are there two strings cemented to surface?	N
(For 2 string wells) If yes, is there a contingency casing if lost circulation occurs?	N
Is well located in critical Cave/Karst?	N
If yes, are there three strings cemented to surface?	N
Is AC Report included?	N

Cimarex Energy Co., Red Hills Unit #21H

3. Cementing Program

Casing	# Sk	Wt. lb/gal	Yld ft ³ /sack	H ₂ O gal/sk	500# Comp. Strength (hours)	Slurry Description
Surface	328	13.50	1.72	9.15	15.5	Lead: Class C + Bentonite
	156	14.80	1.34	6.32	9.5	Tail: Class C + LCM
Intermediate Stage 1	581	10.30	3.64	22.18		Lead: Tuned Light + LCM
	198	14.80	1.36	6.57	9.5	Tail: Class C + Retarder
Intermediate Stage 2	793	12.90	1.88	9.65	12	Lead: 35:65 (Poz:C) + Salt + Bentonite
Production	827	14.20	1.30	5.86	14:30	Tail: 50:50 (Poz:H) + Salt + Bentonite + Fluid Loss + Dispersant + SMS

DV tool with possible annular casing packer as needed is proposed at a depth of +/- 4,888'.

Casing String	TOC	% Excess
Surface	0	42
Intermediate Stage 1	4888	47
Intermediate Stage 2	0	40
Production	12248	25

Cimarex request the ability to perform casing integrity tests after plug bump of cement job.

4. Pressure Control Equipment

A variance is requested for the use of a diverter on the surface casing. See attached for schematic.					
BOP installed and tested before drilling which hole?	Size	Min Required WP	Type		Tested To
9 7/8	13 5/8	5M	Annular	X	50% of working pressure
			Blind Ram		5M
			Pipe Ram	X	
			Double Ram	X	
			Other		
6 3/4	13 5/8	10M	Annular	X	50% of working pressure
			Blind Ram		10M
			Pipe Ram	X	
			Double Ram	X	
			Other		

BOP/BOPE will be tested by an independent service company to 250 psi low and the high pressure indicated above per Onshore Order 2 requirements. The System may be upgraded to a higher pressure but still tested to the working pressure listed in the table above. If the system is upgraded all the components installed will be functional and tested.

Pipe rams will be operationally checked each 24 hour period. Blind rams will be operationally checked on each trip out of the hole. These checks will be noted on the daily tour sheets. Other accessories to the BOP equipment will include a Kelly cock and floor safety valve (inside BOP) and choke lines and choke manifold. See attached schematics.

X	Formation integrity test will be performed per Onshore Order #2. On Exploratory wells or on that portion of any well approved for a 5M BOPE system or greater, a pressure integrity test of each casing shoe shall be performed. Will be tested in accordance with Onshore Oil and Gas Order #2 III.B.1.i.
X	A variance is requested for the use of a flexible choke line from the BOP to Choke Manifold. See attached for specs and hydrostatic test chart.
N	Are anchors required by manufacturer?

Cimarex Energy Co., Red Hills Unit #21H

5. Mud Program

Depth	Type	Weight (ppg)	Viscosity	Water Loss
0' to 976'	FW Spud Mud	8.30 - 8.80	30-32	N/C
976' to 12448'	Brine Diesel Emulsion	8.50 - 9.00	30-35	N/C
12448' to 22105'	Oil Based Mud	12.00 - 12.50	50-70	N/C

Sufficient mud materials to maintain mud properties and meet minimum lost circulation and weight increase requirements will be kept on location at all times.

The Brine Emulsion is completely saturated brine fluid that ties diesel into itself to lower the weight of the fluid. The drilling fluid is completely salt saturated.

What will be used to monitor the loss or gain of fluid?	PVT/Pason/Visual Monitoring
---	-----------------------------

6. Logging and Testing Procedures

Logging, Coring and Testing	
	Will run GR/CNL from TD to surface (horizontal well – vertical portion of hole). Stated logs run will be in the Completion Report and submitted to the BLM.
	No logs are planned based on well control or offset log information.
	Drill stem test?
	Coring?

Additional Logs Planned	Interval
-------------------------	----------

7. Drilling Conditions

Condition	
BH Pressure at deepest TVD	7982 psi
Abnormal Temperature	No

Hydrogen Sulfide (H₂S) monitors will be installed prior to drilling out the surface shoe. If H₂S is detected in concentrations greater than 100 ppm, the operator will comply with the provisions of Onshore Oil and Gas Order #6. If Hydrogen Sulfide is encountered, measured values and formations will be provided to the BLM.

X	H ₂ S is present
X	H ₂ S plan is attached

8. Other Facets of Operation**9. Wellhead**

A multi-bowl wellhead system will be utilized.

After running the 10-3/4" surface casing, a 13 5/8" BOP/BOPE system with a minimum working pressure of 10000 psi will be installed on the wellhead system and will be pressure tested to 250 psi low followed by a 10000 psi test. Annular will be tested to 50% of working pressure. The pressure test will be repeated at least every 30 days, as per Onshore Order No. 2.

The multi-bowl wellhead will be installed by vendor's representative. A copy of the installation instructions has been sent to the BLM field office.

The wellhead will be installed by a third-party welder while being monitored by the wellhead vendor representative.

All BOP equipment will be tested utilizing a conventional test plug. Not a cup or J-packer type.

A solid steel body pack-off will be utilized after running and cementing the intermediate casing. After installation the pack-off and lower flange will be pressure tested to 10000 psi.

All casing strings will be tested as per Onshore Order No.2 to at least 0.22 psi/ft or 1,500 whichever is greater and not to exceed 70% of casing burst.

If well conditions dictate conventional slips will be set and BOPE will be tested to appropriate pressures based on permitted pressure requirements.



Cimarex Red Hills Unit #21H Rev0 RM 11Sept19 Proposal Geodetic Report

(Non-Def Plan)



Report Date: September 11, 2019 - 05:14 PM
Client: Cimarex Energy
Field: NM Lea County (NAD 83)
Structure / Slot: Cimarex Red Hills Unit #21H / New Slot
Well: Red Hills Unit #21H
Borehole: Red Hills Unit #21H
UWI / API#: Unknown / Unknown
Survey Name: Cimarex Red Hills Unit #21H Rev0 RM 11Sept19
Survey Date: September 11, 2019
Tort / AHD / DDI / ERD Ratio: 104.927 ° / 10526.124 ft / 6.298 / 0.856
Coordinate Reference System: NAD83 New Mexico State Plane, Eastern Zone, US Feet
Location Lat / Long: N 32° 5' 34.96047", W 103° 34' 17.38530"
Location Grid N/E Y/X: N 398419.790 ftUS, E 777262.260 ftUS
CRS Grid Convergence Angle: 0.4048 °
Grid Scale Factor: 0.99997284
Version / Patch: 2.10.782.0

Survey / DLS Computation: Minimum Curvature / Lubinski
Vertical Section Azimuth: 179.529 ° (Grid North)
Vertical Section Origin: 0.000 ft, 0.000 ft
TVD Reference Datum: RKB
TVD Reference Elevation: 3367.400 ft above MSL
Seabed / Ground Elevation: 3341.400 ft above MSL
Magnetic Declination: 6.613 °
Total Gravity Field Strength: 998.4377mgn (9.80665 Based)
Gravity Model: GARM
Total Magnetic Field Strength: 47724.261 nT
Magnetic Dip Angle: 59.691 °
Declination Date: September 11, 2019
Magnetic Declination Model: HDGM 2019
North Reference: Grid North
Grid Convergence Used: 0.4048 °
Total Corr Mag North->Grid North: 6.2085 °
Local Coord Referenced To: Well Head

Comments	MD (ft)	Incl (°)	Azim Grid (°)	TVD (ft)	VSEC (ft)	NS (ft)	EW (ft)	DLS (°/100ft)	Northing (ftUS)	Easting (ftUS)	Latitude (N/S ° ' ")	Longitude (E/W ° ' ")
SHL [448' FNL, 850' FEL]	0.00	0.00	176.56	0.00	0.00	0.00	0.00	N/A	398419.79	777262.26	N 32 5 34.96 W 103 34 17.39	
	100.00	0.00	89.76	100.00	0.00	0.00	0.00	0.00	398419.79	777262.26	N 32 5 34.96 W 103 34 17.39	
	200.00	0.00	89.76	200.00	0.00	0.00	0.00	0.00	398419.79	777262.26	N 32 5 34.96 W 103 34 17.39	
	300.00	0.00	89.76	300.00	0.00	0.00	0.00	0.00	398419.79	777262.26	N 32 5 34.96 W 103 34 17.39	
	400.00	0.00	89.76	400.00	0.00	0.00	0.00	0.00	398419.79	777262.26	N 32 5 34.96 W 103 34 17.39	
	500.00	0.00	89.76	500.00	0.00	0.00	0.00	0.00	398419.79	777262.26	N 32 5 34.96 W 103 34 17.39	
	600.00	0.00	89.76	600.00	0.00	0.00	0.00	0.00	398419.79	777262.26	N 32 5 34.96 W 103 34 17.39	
	700.00	0.00	89.76	700.00	0.00	0.00	0.00	0.00	398419.79	777262.26	N 32 5 34.96 W 103 34 17.39	
	800.00	0.00	89.76	800.00	0.00	0.00	0.00	0.00	398419.79	777262.26	N 32 5 34.96 W 103 34 17.39	
	900.00	0.00	89.76	900.00	0.00	0.00	0.00	0.00	398419.79	777262.26	N 32 5 34.96 W 103 34 17.39	
Rustler	926.00	0.00	89.76	926.00	0.00	0.00	0.00	0.00	398419.79	777262.26	N 32 5 34.96 W 103 34 17.39	
	1000.00	0.00	89.76	1000.00	0.00	0.00	0.00	0.00	398419.79	777262.26	N 32 5 34.96 W 103 34 17.39	
	1100.00	0.00	89.76	1100.00	0.00	0.00	0.00	0.00	398419.79	777262.26	N 32 5 34.96 W 103 34 17.39	
	1200.00	0.00	89.76	1200.00	0.00	0.00	0.00	0.00	398419.79	777262.26	N 32 5 34.96 W 103 34 17.39	
Top of Salt	1260.00	0.00	89.76	1260.00	0.00	0.00	0.00	0.00	398419.79	777262.26	N 32 5 34.96 W 103 34 17.39	
	1300.00	0.00	89.76	1300.00	0.00	0.00	0.00	0.00	398419.79	777262.26	N 32 5 34.96 W 103 34 17.39	
	1400.00	0.00	89.76	1400.00	0.00	0.00	0.00	0.00	398419.79	777262.26	N 32 5 34.96 W 103 34 17.39	
	1500.00	0.00	89.76	1500.00	0.00	0.00	0.00	0.00	398419.79	777262.26	N 32 5 34.96 W 103 34 17.39	
	1600.00	0.00	89.76	1600.00	0.00	0.00	0.00	0.00	398419.79	777262.26	N 32 5 34.96 W 103 34 17.39	
	1700.00	0.00	89.76	1700.00	0.00	0.00	0.00	0.00	398419.79	777262.26	N 32 5 34.96 W 103 34 17.39	
	1800.00	0.00	89.76	1800.00	0.00	0.00	0.00	0.00	398419.79	777262.26	N 32 5 34.96 W 103 34 17.39	
	1900.00	0.00	89.76	1900.00	0.00	0.00	0.00	0.00	398419.79	777262.26	N 32 5 34.96 W 103 34 17.39	
	2000.00	0.00	89.76	2000.00	0.00	0.00	0.00	0.00	398419.79	777262.26	N 32 5 34.96 W 103 34 17.39	
	2100.00	0.00	89.76	2100.00	0.00	0.00	0.00	0.00	398419.79	777262.26	N 32 5 34.96 W 103 34 17.39	
	2200.00	0.00	89.76	2200.00	0.00	0.00	0.00	0.00	398419.79	777262.26	N 32 5 34.96 W 103 34 17.39	
	2300.00	0.00	89.76	2300.00	0.00	0.00	0.00	0.00	398419.79	777262.26	N 32 5 34.96 W 103 34 17.39	
	2400.00	0.00	89.76	2400.00	0.00	0.00	0.00	0.00	398419.79	777262.26	N 32 5 34.96 W 103 34 17.39	

Comments	MD (ft)	Incl (°)	Azim Grid (°)	TVD (ft)	VSEC (ft)	NS (ft)	EW (ft)	DLS (°/100ft)	Northing (ftUS)	Easting (ftUS)	Latitude (N/S ° ' ")	Longitude (E/W ° ' ")
Nudge 2°/100' DLS	2500.00	0.00	89.76	2500.00	0.00	0.00	0.00	0.00	398419.79	777262.26	N 32 5 34.96 W 103 34 17.39	
	2600.00	2.00	89.76	2599.98	0.01	0.01	1.75	2.00	398419.80	777264.01	N 32 5 34.96 W 103 34 17.37	
	2700.00	4.00	89.76	2699.84	0.03	0.03	6.98	2.00	398419.82	777269.24	N 32 5 34.96 W 103 34 17.30	
	2800.00	6.00	89.76	2799.45	0.06	0.07	15.69	2.00	398419.86	777277.95	N 32 5 34.96 W 103 34 17.20	
Hold Nudge	2870.10	7.40	89.76	2869.07	0.09	0.10	23.87	2.00	398419.89	777286.13	N 32 5 34.96 W 103 34 17.11	
	2900.00	7.40	89.76	2898.72	0.11	0.12	27.73	0.00	398419.91	777289.98	N 32 5 34.96 W 103 34 17.06	
	3000.00	7.40	89.76	2997.89	0.16	0.17	40.61	0.00	398419.96	777302.87	N 32 5 34.96 W 103 34 16.91	
	3100.00	7.40	89.76	3097.06	0.21	0.23	53.49	0.00	398420.02	777315.75	N 32 5 34.96 W 103 34 16.76	
	3200.00	7.40	89.76	3196.22	0.26	0.28	66.37	0.00	398420.07	777328.63	N 32 5 34.96 W 103 34 16.61	
	3300.00	7.40	89.76	3295.39	0.32	0.34	79.26	0.00	398420.13	777341.51	N 32 5 34.96 W 103 34 16.46	
	3400.00	7.40	89.76	3394.56	0.37	0.39	92.14	0.00	398420.18	777354.40	N 32 5 34.96 W 103 34 16.31	
	3500.00	7.40	89.76	3493.72	0.42	0.45	105.02	0.00	398420.24	777367.28	N 32 5 34.96 W 103 34 16.16	
	3600.00	7.40	89.76	3592.89	0.47	0.50	117.91	0.00	398420.29	777380.16	N 32 5 34.96 W 103 34 16.01	
	3700.00	7.40	89.76	3692.06	0.52	0.55	130.79	0.00	398420.34	777393.04	N 32 5 34.96 W 103 34 15.87	
	3800.00	7.40	89.76	3791.22	0.57	0.61	143.67	0.00	398420.40	777405.93	N 32 5 34.96 W 103 34 15.72	
	3900.00	7.40	89.76	3890.39	0.62	0.66	156.55	0.00	398420.45	777418.81	N 32 5 34.96 W 103 34 15.57	
	4000.00	7.40	89.76	3989.56	0.67	0.72	169.44	0.00	398420.51	777431.69	N 32 5 34.96 W 103 34 15.42	
	4100.00	7.40	89.76	4088.72	0.73	0.77	182.32	0.00	398420.56	777444.57	N 32 5 34.96 W 103 34 15.27	
	4200.00	7.40	89.76	4187.89	0.78	0.83	195.20	0.00	398420.62	777457.46	N 32 5 34.96 W 103 34 15.12	
	4300.00	7.40	89.76	4287.06	0.83	0.88	208.09	0.00	398420.67	777470.34	N 32 5 34.95 W 103 34 14.97	
	4400.00	7.40	89.76	4386.22	0.88	0.94	220.97	0.00	398420.73	777483.22	N 32 5 34.95 W 103 34 14.82	
	4500.00	7.40	89.76	4485.39	0.93	0.99	233.85	0.00	398420.78	777496.10	N 32 5 34.95 W 103 34 14.67	
	4600.00	7.40	89.76	4584.56	0.98	1.05	246.73	0.00	398420.84	777508.99	N 32 5 34.95 W 103 34 14.52	
Base of Salt	4668.01	7.40	89.76	4652.00	1.02	1.08	255.50	0.00	398420.87	777517.75	N 32 5 34.95 W 103 34 14.42	
	4700.00	7.40	89.76	4683.72	1.03	1.10	259.62	0.00	398420.89	777521.87	N 32 5 34.95 W 103 34 14.37	
	4800.00	7.40	89.76	4782.89	1.08	1.16	272.50	0.00	398420.95	777534.75	N 32 5 34.95 W 103 34 14.22	
	4900.00	7.40	89.76	4882.06	1.14	1.21	285.38	0.00	398421.00	777547.63	N 32 5 34.95 W 103 34 14.07	
Lamar	4905.99	7.40	89.76	4888.00	1.14	1.21	286.16	0.00	398421.00	777548.41	N 32 5 34.95 W 103 34 14.06	
Bell Canyon	4950.36	7.40	89.76	4932.00	1.16	1.24	291.87	0.00	398421.03	777554.12	N 32 5 34.95 W 103 34 13.99	
	5000.00	7.40	89.76	4981.22	1.19	1.26	298.27	0.00	398421.05	777560.52	N 32 5 34.95 W 103 34 13.92	
	5100.00	7.40	89.76	5080.39	1.24	1.32	311.15	0.00	398421.11	777573.40	N 32 5 34.95 W 103 34 13.77	
	5200.00	7.40	89.76	5179.56	1.29	1.37	324.03	0.00	398421.16	777586.28	N 32 5 34.95 W 103 34 13.62	
	5300.00	7.40	89.76	5278.72	1.34	1.43	336.91	0.00	398421.22	777599.16	N 32 5 34.95 W 103 34 13.47	
	5400.00	7.40	89.76	5377.89	1.39	1.48	349.80	0.00	398421.27	777612.05	N 32 5 34.95 W 103 34 13.32	
	5500.00	7.40	89.76	5477.06	1.44	1.54	362.68	0.00	398421.33	777624.93	N 32 5 34.95 W 103 34 13.17	
	5600.00	7.40	89.76	5576.22	1.49	1.59	375.56	0.00	398421.38	777637.81	N 32 5 34.95 W 103 34 13.02	
	5700.00	7.40	89.76	5675.39	1.55	1.65	388.45	0.00	398421.44	777650.70	N 32 5 34.95 W 103 34 12.87	
	5800.00	7.40	89.76	5774.56	1.60	1.70	401.33	0.00	398421.49	777663.58	N 32 5 34.95 W 103 34 12.72	
	5900.00	7.40	89.76	5873.72	1.65	1.76	414.21	0.00	398421.55	777676.46	N 32 5 34.95 W 103 34 12.57	
	6000.00	7.40	89.76	5972.89	1.70	1.81	427.10	0.00	398421.60	777689.34	N 32 5 34.95 W 103 34 12.42	
Cherry Canyon	6044.48	7.40	89.76	6017.00	1.72	1.84	432.83	0.00	398421.63	777695.07	N 32 5 34.95 W 103 34 12.35	
	6100.00	7.40	89.76	6072.06	1.75	1.87	439.98	0.00	398421.66	777702.23	N 32 5 34.95 W 103 34 12.27	
	6200.00	7.40	89.76	6171.22	1.80	1.92	452.86	0.00	398421.71	777715.11	N 32 5 34.95 W 103 34 12.12	
	6300.00	7.40	89.76	6270.39	1.85	1.98	465.74	0.00	398421.77	777727.99	N 32 5 34.95 W 103 34 11.97	
	6400.00	7.40	89.76	6369.56	1.90	2.03	478.63	0.00	398421.82	777740.87	N 32 5 34.95 W 103 34 11.82	
	6500.00	7.40	89.76	6468.72	1.96	2.08	491.51	0.00	398421.87	777753.76	N 32 5 34.95 W 103 34 11.67	
Drop to Vertical 2°/100' DLS	6531.54	7.40	89.76	6500.00	1.97	2.10	495.57	0.00	398421.89	777757.82	N 32 5 34.95 W 103 34 11.62	
	6600.00	6.03	89.76	6567.99	2.00	2.14	503.58	2.00	398421.93	777765.83	N 32 5 34.95 W 103 34 11.53	
	6700.00	4.03	89.76	6667.60	2.04	2.17	512.35	2.00	398421.96	777774.60	N 32 5 34.95 W 103 34 11.43	
	6800.00	2.03	89.76	6767.45	2.06	2.20	517.64	2.00	398421.99	777779.89	N 32 5 34.95 W 103 34 11.37	
	6900.00	0.03	89.76	6867.43	2.07	2.20	519.45	2.00	398421.99	777781.69	N 32 5 34.95 W 103 34 11.35	
Hold Vertical	6901.64	0.00	89.76	6869.07	2.07	2.20	519.45	2.00	398421.99	777781.69	N 32 5 34.95 W 103 34 11.35	
	7000.00	0.00	89.76	6967.43	2.07	2.20	519.45	0.00	398421.99	777781.69	N 32 5 34.95 W 103 34 11.35	
	7100.00	0.00	89.76	7067.43	2.07	2.20	519.45	0.00	398421.99	777781.69	N 32 5 34.95 W 103 34 11.35	
	7200.00	0.00	89.76	7167.43	2.07	2.20	519.45	0.00	398421.99	777781.69	N 32 5 34.95 W 103 34 11.35	
	7300.00	0.00	89.76	7267.43	2.07	2.20	519.45	0.00	398421.99	777781.69	N 32 5 34.95 W 103 34 11.35	
	7400.00	0.00	89.76	7367.43	2.07	2.20	519.45	0.00	398421.99	777781.69	N 32 5 34.95 W 103 34 11.35	

Comments	MD (ft)	Incl (°)	Azim Grid (°)	TVD (ft)	VSEC (ft)	NS (ft)	EW (ft)	DLS (°/100ft)	Northing (ftUS)	Easting (ftUS)	Latitude (N/S ° ' ")	Longitude (E/W ° ' ")
Brushy Canyon	7500.00	0.00	89.76	7467.43	2.07	2.20	519.45	0.00	398421.99	777781.69	N 32 5 34.95 W	103 34 11.35
	7522.57	0.00	89.76	7490.00	2.07	2.20	519.45	0.00	398421.99	777781.69	N 32 5 34.95 W	103 34 11.35
	7600.00	0.00	89.76	7567.43	2.07	2.20	519.45	0.00	398421.99	777781.69	N 32 5 34.95 W	103 34 11.35
	7700.00	0.00	89.76	7667.43	2.07	2.20	519.45	0.00	398421.99	777781.69	N 32 5 34.95 W	103 34 11.35
	7800.00	0.00	89.76	7767.43	2.07	2.20	519.45	0.00	398421.99	777781.69	N 32 5 34.95 W	103 34 11.35
	7900.00	0.00	89.76	7867.43	2.07	2.20	519.45	0.00	398421.99	777781.69	N 32 5 34.95 W	103 34 11.35
	8000.00	0.00	89.76	7967.43	2.07	2.20	519.45	0.00	398421.99	777781.69	N 32 5 34.95 W	103 34 11.35
	8100.00	0.00	89.76	8067.43	2.07	2.20	519.45	0.00	398421.99	777781.69	N 32 5 34.95 W	103 34 11.35
	8200.00	0.00	89.76	8167.43	2.07	2.20	519.45	0.00	398421.99	777781.69	N 32 5 34.95 W	103 34 11.35
	8300.00	0.00	89.76	8267.43	2.07	2.20	519.45	0.00	398421.99	777781.69	N 32 5 34.95 W	103 34 11.35
	8400.00	0.00	89.76	8367.43	2.07	2.20	519.45	0.00	398421.99	777781.69	N 32 5 34.95 W	103 34 11.35
	8500.00	0.00	89.76	8467.43	2.07	2.20	519.45	0.00	398421.99	777781.69	N 32 5 34.95 W	103 34 11.35
	8600.00	0.00	89.76	8567.43	2.07	2.20	519.45	0.00	398421.99	777781.69	N 32 5 34.95 W	103 34 11.35
	8700.00	0.00	89.76	8667.43	2.07	2.20	519.45	0.00	398421.99	777781.69	N 32 5 34.95 W	103 34 11.35
	8800.00	0.00	89.76	8767.43	2.07	2.20	519.45	0.00	398421.99	777781.69	N 32 5 34.95 W	103 34 11.35
	8900.00	0.00	89.76	8867.43	2.07	2.20	519.45	0.00	398421.99	777781.69	N 32 5 34.95 W	103 34 11.35
	9000.00	0.00	89.76	8967.43	2.07	2.20	519.45	0.00	398421.99	777781.69	N 32 5 34.95 W	103 34 11.35
Bone Spring	9071.57	0.00	89.76	9039.00	2.07	2.20	519.45	0.00	398421.99	777781.69	N 32 5 34.95 W	103 34 11.35
Leonard Shale	9100.00	0.00	89.76	9067.43	2.07	2.20	519.45	0.00	398421.99	777781.69	N 32 5 34.95 W	103 34 11.35
	9126.57	0.00	89.76	9094.00	2.07	2.20	519.45	0.00	398421.99	777781.69	N 32 5 34.95 W	103 34 11.35
	9200.00	0.00	89.76	9167.43	2.07	2.20	519.45	0.00	398421.99	777781.69	N 32 5 34.95 W	103 34 11.35
Avalon Shale	9300.00	0.00	89.76	9267.43	2.07	2.20	519.45	0.00	398421.99	777781.69	N 32 5 34.95 W	103 34 11.35
	9388.57	0.00	89.76	9356.00	2.07	2.20	519.45	0.00	398421.99	777781.69	N 32 5 34.95 W	103 34 11.35
	9400.00	0.00	89.76	9367.43	2.07	2.20	519.45	0.00	398421.99	777781.69	N 32 5 34.95 W	103 34 11.35
	9500.00	0.00	89.76	9467.43	2.07	2.20	519.45	0.00	398421.99	777781.69	N 32 5 34.95 W	103 34 11.35
	9600.00	0.00	89.76	9567.43	2.07	2.20	519.45	0.00	398421.99	777781.69	N 32 5 34.95 W	103 34 11.35
Lower Avalon Shale	9700.00	0.00	89.76	9667.43	2.07	2.20	519.45	0.00	398421.99	777781.69	N 32 5 34.95 W	103 34 11.35
	9763.57	0.00	89.76	9731.00	2.07	2.20	519.45	0.00	398421.99	777781.69	N 32 5 34.95 W	103 34 11.35
	9800.00	0.00	89.76	9767.43	2.07	2.20	519.45	0.00	398421.99	777781.69	N 32 5 34.95 W	103 34 11.35
	9900.00	0.00	89.76	9867.43	2.07	2.20	519.45	0.00	398421.99	777781.69	N 32 5 34.95 W	103 34 11.35
1st Bone Spring Sand	10000.00	0.00	89.76	9967.43	2.07	2.20	519.45	0.00	398421.99	777781.69	N 32 5 34.95 W	103 34 11.35
	10068.57	0.00	89.76	10036.00	2.07	2.20	519.45	0.00	398421.99	777781.69	N 32 5 34.95 W	103 34 11.35
	10100.00	0.00	89.76	10067.43	2.07	2.20	519.45	0.00	398421.99	777781.69	N 32 5 34.95 W	103 34 11.35
2nd Bone Spring Carb	10200.00	0.00	89.76	10167.43	2.07	2.20	519.45	0.00	398421.99	777781.69	N 32 5 34.95 W	103 34 11.35
	10255.57	0.00	89.76	10223.00	2.07	2.20	519.45	0.00	398421.99	777781.69	N 32 5 34.95 W	103 34 11.35
	10300.00	0.00	89.76	10267.43	2.07	2.20	519.45	0.00	398421.99	777781.69	N 32 5 34.95 W	103 34 11.35
	10400.00	0.00	89.76	10367.43	2.07	2.20	519.45	0.00	398421.99	777781.69	N 32 5 34.95 W	103 34 11.35
2nd Bone Spring Sand	10500.00	0.00	89.76	10467.43	2.07	2.20	519.45	0.00	398421.99	777781.69	N 32 5 34.95 W	103 34 11.35
	10596.57	0.00	89.76	10564.00	2.07	2.20	519.45	0.00	398421.99	777781.69	N 32 5 34.95 W	103 34 11.35
	10600.00	0.00	89.76	10567.43	2.07	2.20	519.45	0.00	398421.99	777781.69	N 32 5 34.95 W	103 34 11.35
	10700.00	0.00	89.76	10667.43	2.07	2.20	519.45	0.00	398421.99	777781.69	N 32 5 34.95 W	103 34 11.35
	10800.00	0.00	89.76	10767.43	2.07	2.20	519.45	0.00	398421.99	777781.69	N 32 5 34.95 W	103 34 11.35
3rd Bone Spring Carb	10900.00	0.00	89.76	10867.43	2.07	2.20	519.45	0.00	398421.99	777781.69	N 32 5 34.95 W	103 34 11.35
	11000.00	0.00	89.76	10967.43	2.07	2.20	519.45	0.00	398421.99	777781.69	N 32 5 34.95 W	103 34 11.35
	11049.57	0.00	89.76	11017.00	2.07	2.20	519.45	0.00	398421.99	777781.69	N 32 5 34.95 W	103 34 11.35
	11100.00	0.00	89.76	11067.43	2.07	2.20	519.45	0.00	398421.99	777781.69	N 32 5 34.95 W	103 34 11.35
	11200.00	0.00	89.76	11167.43	2.07	2.20	519.45	0.00	398421.99	777781.69	N 32 5 34.95 W	103 34 11.35
3rd Bone Spring Sand	11300.00	0.00	89.76	11267.43	2.07	2.20	519.45	0.00	398421.99	777781.69	N 32 5 34.95 W	103 34 11.35
	11400.00	0.00	89.76	11367.43	2.07	2.20	519.45	0.00	398421.99	777781.69	N 32 5 34.95 W	103 34 11.35
	11500.00	0.00	89.76	11467.43	2.07	2.20	519.45	0.00	398421.99	777781.69	N 32 5 34.95 W	103 34 11.35
	11600.00	0.00	89.76	11567.43	2.07	2.20	519.45	0.00	398421.99	777781.69	N 32 5 34.95 W	103 34 11.35
	11700.00	0.00	89.76	11667.43	2.07	2.20	519.45	0.00	398421.99	777781.69	N 32 5 34.95 W	103 34 11.35
3rd Bone Spring Sand	11714.57	0.00	89.76	11682.00	2.07	2.20	519.45	0.00	398421.99	777781.69	N 32 5 34.95 W	103 34 11.35

Comments	MD (ft)	Incl (°)	Azim Grid (°)	TVD (ft)	VSEC (ft)	NS (ft)	EW (ft)	DLS (°/100ft)	Northing (ftUS)	Easting (ftUS)	Latitude (N/S ° ' ")	Longitude (E/W ° ' ")
KOP - Build	11800.00	0.00	89.76	11767.43	2.07	2.20	519.45	0.00	398421.99	777781.69	N 32 5 34.95 W	103 34 11.35
12°/100' DLS	11822.57	0.00	89.76	11790.00	2.07	2.20	519.45	0.00	398421.99	777781.69	N 32 5 34.95 W	103 34 11.35
	11900.00	9.29	179.53	11867.09	8.33	-4.06	519.50	12.00	398415.73	777781.74	N 32 5 34.88 W	103 34 11.35
	12000.00	21.29	179.53	11963.38	34.66	-30.39	519.71	12.00	398389.41	777781.96	N 32 5 34.62 W	103 34 11.35
	12100.00	33.29	179.53	12052.08	80.43	-76.15	520.09	12.00	398343.64	777782.33	N 32 5 34.17 W	103 34 11.35
	12200.00	45.29	179.53	12129.33	143.64	-139.36	520.61	12.00	398280.43	777782.85	N 32 5 33.55 W	103 34 11.35
Wolfcamp	12300.00	57.29	179.53	12191.75	221.53	-217.25	521.25	12.00	398202.55	777783.49	N 32 5 32.77 W	103 34 11.34
	12335.90	61.60	179.53	12210.00	252.44	-248.16	521.50	12.00	398171.64	777783.75	N 32 5 32.47 W	103 34 11.34
	12400.00	69.29	179.53	12236.62	310.70	-306.41	521.98	12.00	398113.38	777784.23	N 32 5 31.89 W	103 34 11.34
Build 4°/100' DLS	12447.57	75.00	179.53	12251.20	355.95	-351.67	522.36	12.00	398068.13	777784.60	N 32 5 31.44 W	103 34 11.34
	12500.00	77.10	179.53	12263.84	406.84	-402.55	522.77	4.00	398017.25	777785.02	N 32 5 30.94 W	103 34 11.34
Wolfcamp Y Sand	12582.90	80.41	179.53	12280.00	488.14	-483.85	523.44	4.00	397935.95	777785.69	N 32 5 30.14 W	103 34 11.34
	12600.00	81.10	179.53	12282.75	505.01	-500.72	523.58	4.00	397919.08	777785.83	N 32 5 29.97 W	103 34 11.34
	12700.00	85.10	179.53	12294.76	604.27	-599.98	524.40	4.00	397819.83	777786.64	N 32 5 28.99 W	103 34 11.34
	12800.00	89.10	179.53	12299.83	704.12	-699.82	525.22	4.00	397719.99	777787.46	N 32 5 28.00 W	103 34 11.34
Wolfcamp Y SS Target	12819.46	89.88	179.53	12300.00	723.58	-719.28	525.38	4.00	397700.53	777787.62	N 32 5 27.81 W	103 34 11.34
Landing Point	12825.66	90.12	179.53	12300.00	729.77	-725.48	525.43	4.00	397694.33	777787.67	N 32 5 27.75 W	103 34 11.34
Wolfcamp Y SS Target	12825.68	90.12	179.53	12300.00	729.79	-725.50	525.43	0.00	397694.31	777787.67	N 32 5 27.74 W	103 34 11.34
	12900.00	90.12	179.53	12299.84	804.12	-799.82	526.04	0.00	397619.99	777788.28	N 32 5 27.01 W	103 34 11.34
	13000.00	90.12	179.53	12299.62	904.12	-899.82	526.86	0.00	397520.00	777789.11	N 32 5 26.02 W	103 34 11.34
	13100.00	90.12	179.53	12299.41	1004.12	-999.81	527.68	0.00	397420.01	777789.93	N 32 5 25.03 W	103 34 11.33
	13200.00	90.12	179.53	12299.19	1104.12	-1099.81	528.51	0.00	397320.01	777790.75	N 32 5 24.04 W	103 34 11.33
	13300.00	90.12	179.53	12298.98	1204.12	-1199.80	529.33	0.00	397220.02	777791.57	N 32 5 23.05 W	103 34 11.33
	13400.00	90.12	179.53	12298.76	1304.12	-1299.80	530.15	0.00	397120.03	777792.39	N 32 5 22.06 W	103 34 11.33
	13500.00	90.12	179.53	12298.55	1404.11	-1399.80	530.97	0.00	397020.03	777793.22	N 32 5 21.07 W	103 34 11.33
	13600.00	90.12	179.53	12298.33	1504.11	-1499.79	531.79	0.00	396920.04	777794.04	N 32 5 20.08 W	103 34 11.33
	13700.00	90.12	179.53	12298.12	1604.11	-1599.79	532.62	0.00	396820.05	777794.86	N 32 5 19.09 W	103 34 11.33
	13800.00	90.12	179.53	12297.90	1704.11	-1699.79	533.44	0.00	396720.05	777795.68	N 32 5 18.10 W	103 34 11.32
	13900.00	90.12	179.53	12297.68	1804.11	-1799.78	534.26	0.00	396620.06	777796.50	N 32 5 17.11 W	103 34 11.32
	14000.00	90.12	179.53	12297.47	1904.11	-1899.78	535.08	0.00	396520.07	777797.33	N 32 5 16.12 W	103 34 11.32
	14100.00	90.12	179.53	12297.25	2004.11	-1999.78	535.90	0.00	396420.07	777798.15	N 32 5 15.13 W	103 34 11.32
	14200.00	90.12	179.53	12297.04	2104.11	-2099.77	536.73	0.00	396320.08	777798.97	N 32 5 14.15 W	103 34 11.32
	14300.00	90.12	179.53	12296.82	2204.11	-2199.77	537.55	0.00	396220.09	777799.79	N 32 5 13.16 W	103 34 11.32
	14400.00	90.12	179.53	12296.61	2304.11	-2299.76	538.37	0.00	396120.09	777800.61	N 32 5 12.17 W	103 34 11.32
	14500.00	90.12	179.53	12296.39	2404.11	-2399.76	539.19	0.00	396020.10	777801.44	N 32 5 11.18 W	103 34 11.32
	14600.00	90.12	179.53	12296.18	2504.11	-2499.76	540.01	0.00	395920.11	777802.26	N 32 5 10.19 W	103 34 11.31
	14700.00	90.12	179.53	12295.96	2604.11	-2599.75	540.84	0.00	395820.11	777803.08	N 32 5 9.20 W	103 34 11.31
	14800.00	90.12	179.53	12295.74	2704.11	-2699.75	541.66	0.00	395720.12	777803.90	N 32 5 8.21 W	103 34 11.31
	14900.00	90.12	179.53	12295.53	2804.11	-2799.75	542.48	0.00	395620.12	777804.72	N 32 5 7.22 W	103 34 11.31
	15000.00	90.12	179.53	12295.31	2904.11	-2899.74	543.30	0.00	395520.13	777805.55	N 32 5 6.23 W	103 34 11.31
	15100.00	90.12	179.53	12295.10	3004.11	-2999.74	544.12	0.00	395420.14	777806.37	N 32 5 5.24 W	103 34 11.31
	15200.00	90.12	179.53	12294.88	3104.11	-3099.74	544.95	0.00	395320.14	777807.19	N 32 5 4.25 W	103 34 11.31
	15300.00	90.12	179.53	12294.67	3204.11	-3199.73	545.77	0.00	395220.15	777808.01	N 32 5 3.26 W	103 34 11.30
	15400.00	90.12	179.53	12294.45	3304.11	-3299.73	546.59	0.00	395120.16	777808.83	N 32 5 2.27 W	103 34 11.30
	15500.00	90.12	179.53	12294.24	3404.11	-3399.73	547.41	0.00	395020.16	777809.66	N 32 5 1.28 W	103 34 11.30
	15600.00	90.12	179.53	12294.02	3504.11	-3499.72	548.24	0.00	394920.17	777810.48	N 32 5 0.29 W	103 34 11.30
	15700.00	90.12	179.53	12293.80	3604.11	-3599.72	549.06	0.00	394820.18	777811.30	N 32 4 59.30 W	103 34 11.30
	15800.00	90.12	179.53	12293.59	3704.11	-3699.71	549.88	0.00	394720.18	777812.12	N 32 4 58.31 W	103 34 11.30
	15900.00	90.12	179.53	12293.37	3804.11	-3799.71	550.70	0.00	394620.19	777812.95	N 32 4 57.32 W	103 34 11.30
	16000.00	90.12	179.53	12293.16	3904.11	-3899.71	551.52	0.00	394520.20	777813.77	N 32 4 56.33 W	103 34 11.30
	16100.00	90.12	179.53	12292.94	4004.11	-3999.70	552.35	0.00	394420.20	777814.59	N 32 4 55.34 W	103 34 11.29
	16200.00	90.12	179.53	12292.73	4104.11	-4099.70	553.17	0.00	394320.21	777815.41	N 32 4 54.35 W	103 34 11.29
	16300.00	90.12	179.53	12292.51	4204.11	-4199.70	553.99	0.00	394220.22	777816.23	N 32 4 53.37 W	103 34 11.29
	16400.00	90.12	179.53	12292.30	4304.11	-4299.69	554.81	0.00	394120.22	777817.06	N 32 4 52.38 W	103 34 11.29

Comments	MD (ft)	Incl (°)	Azim Grid (°)	TVD (ft)	VSEC (ft)	NS (ft)	EW (ft)	DLS (°/100ft)	Northing (ftUS)	Easting (ftUS)	Latitude (N/S ° ' ")	Longitude (E/W ° ' ")
NMNM005792 - NMNM089425 Crossing	16500.00	90.12	179.53	12292.08	4404.11	-4399.69	555.63	0.00	394020.23	777817.88	N 32 4 51.39 W 103 34 11.29	
	16600.00	90.12	179.53	12291.86	4504.11	-4499.69	556.46	0.00	393920.24	777818.70	N 32 4 50.40 W 103 34 11.29	
	16700.00	90.12	179.53	12291.65	4604.11	-4599.68	557.28	0.00	393820.24	777819.52	N 32 4 49.41 W 103 34 11.29	
	16800.00	90.12	179.53	12291.43	4704.11	-4699.68	558.10	0.00	393720.25	777820.34	N 32 4 48.42 W 103 34 11.28	
	16900.00	90.12	179.53	12291.22	4804.11	-4799.67	558.92	0.00	393620.26	777821.17	N 32 4 47.43 W 103 34 11.28	
	16925.10	90.12	179.53	12291.16	4829.21	-4824.77	559.13	0.00	393595.16	777821.37	N 32 4 47.18 W 103 34 11.28	
	17000.00	90.12	179.53	12291.00	4904.11	-4899.67	559.74	0.00	393520.26	777821.99	N 32 4 46.44 W 103 34 11.28	
	17100.00	90.12	179.53	12290.79	5004.11	-4999.67	560.57	0.00	393420.27	777822.81	N 32 4 45.45 W 103 34 11.28	
	17200.00	90.12	179.53	12290.57	5104.11	-5099.66	561.39	0.00	393320.27	777823.63	N 32 4 44.46 W 103 34 11.28	
	17300.00	90.12	179.53	12290.36	5204.11	-5199.66	562.21	0.00	393220.28	777824.45	N 32 4 43.47 W 103 34 11.28	
	17400.00	90.12	179.53	12290.14	5304.11	-5299.66	563.03	0.00	393120.29	777825.28	N 32 4 42.48 W 103 34 11.28	
	17500.00	90.12	179.53	12289.92	5404.11	-5399.65	563.85	0.00	393020.29	777826.10	N 32 4 41.49 W 103 34 11.28	
	17600.00	90.12	179.53	12289.71	5504.11	-5499.65	564.68	0.00	392920.30	777826.92	N 32 4 40.50 W 103 34 11.27	
	17700.00	90.12	179.53	12289.49	5604.11	-5599.65	565.50	0.00	392820.31	777827.74	N 32 4 39.51 W 103 34 11.27	
	17800.00	90.12	179.53	12289.28	5704.10	-5699.64	566.32	0.00	392720.31	777828.56	N 32 4 38.52 W 103 34 11.27	
	17900.00	90.12	179.53	12289.06	5804.10	-5799.64	567.14	0.00	392620.32	777829.39	N 32 4 37.53 W 103 34 11.27	
	18000.00	90.12	179.53	12288.85	5904.10	-5899.63	567.96	0.00	392520.33	777830.21	N 32 4 36.54 W 103 34 11.27	
	18100.00	90.12	179.53	12288.63	6004.10	-5999.63	568.79	0.00	392420.33	777831.03	N 32 4 35.55 W 103 34 11.27	
	18200.00	90.12	179.53	12288.42	6104.10	-6099.63	569.61	0.00	392320.34	777831.85	N 32 4 34.56 W 103 34 11.27	
	18300.00	90.12	179.53	12288.20	6204.10	-6199.62	570.43	0.00	392220.35	777832.67	N 32 4 33.57 W 103 34 11.26	
NMNM089425 - NMNM0000127 H Crossing	18400.00	90.12	179.53	12287.99	6304.10	-6299.62	571.25	0.00	392120.35	777833.50	N 32 4 32.59 W 103 34 11.26	
	18500.00	90.12	179.53	12287.77	6404.10	-6399.62	572.07	0.00	392020.36	777834.32	N 32 4 31.60 W 103 34 11.26	
	18600.00	90.12	179.53	12287.55	6504.10	-6499.61	572.90	0.00	391920.37	777835.14	N 32 4 30.61 W 103 34 11.26	
	18700.00	90.12	179.53	12287.34	6604.10	-6599.61	573.72	0.00	391820.37	777835.96	N 32 4 29.62 W 103 34 11.26	
	18800.00	90.12	179.53	12287.12	6704.10	-6699.61	574.54	0.00	391720.38	777836.78	N 32 4 28.63 W 103 34 11.26	
	18900.00	90.12	179.53	12286.91	6804.10	-6799.60	575.36	0.00	391620.39	777837.61	N 32 4 27.64 W 103 34 11.26	
	19000.00	90.12	179.53	12286.69	6904.10	-6899.60	576.19	0.00	391520.39	777838.43	N 32 4 26.65 W 103 34 11.26	
	19100.00	90.12	179.53	12286.48	7004.10	-6999.60	577.01	0.00	391420.40	777839.25	N 32 4 25.66 W 103 34 11.25	
	19200.00	90.12	179.53	12286.26	7104.10	-7099.59	577.83	0.00	391320.41	777840.07	N 32 4 24.67 W 103 34 11.25	
	19300.00	90.12	179.53	12286.05	7204.10	-7199.59	578.65	0.00	391220.41	777840.89	N 32 4 23.68 W 103 34 11.25	
	19400.00	90.12	179.53	12285.83	7304.10	-7299.58	579.47	0.00	391120.42	777841.72	N 32 4 22.69 W 103 34 11.25	
	19500.00	90.12	179.53	12285.61	7404.10	-7399.58	580.30	0.00	391020.43	777842.54	N 32 4 21.70 W 103 34 11.25	
	19600.00	90.12	179.53	12285.40	7504.10	-7499.58	581.12	0.00	390920.43	777843.36	N 32 4 20.71 W 103 34 11.25	
	19700.00	90.12	179.53	12285.18	7604.10	-7599.57	581.94	0.00	390820.44	777844.18	N 32 4 19.72 W 103 34 11.25	
	19800.00	90.12	179.53	12284.97	7704.10	-7699.57	582.76	0.00	390720.44	777845.00	N 32 4 18.73 W 103 34 11.24	
	19900.00	90.12	179.53	12284.75	7804.10	-7799.57	583.58	0.00	390620.45	777845.83	N 32 4 17.74 W 103 34 11.24	
	20000.00	90.12	179.53	12284.54	7904.10	-7899.56	584.41	0.00	390520.46	777846.65	N 32 4 16.75 W 103 34 11.24	
	20100.00	90.12	179.53	12284.32	8004.10	-7999.56	585.23	0.00	390420.46	777847.47	N 32 4 15.76 W 103 34 11.24	
	20200.00	90.12	179.53	12284.11	8104.10	-8099.56	586.05	0.00	390320.47	777848.29	N 32 4 14.77 W 103 34 11.24	
	20300.00	90.12	179.53	12283.89	8204.10	-8199.55	586.87	0.00	390220.48	777849.12	N 32 4 13.78 W 103 34 11.24	
	20400.00	90.12	179.53	12283.67	8304.10	-8299.55	587.69	0.00	390120.48	777849.94	N 32 4 12.79 W 103 34 11.24	
	20500.00	90.12	179.53	12283.46	8404.10	-8399.54	588.52	0.00	390020.49	777850.76	N 32 4 11.80 W 103 34 11.24	
	20600.00	90.12	179.53	12283.24	8504.10	-8499.54	589.34	0.00	389920.50	777851.58	N 32 4 10.82 W 103 34 11.23	
	20700.00	90.12	179.53	12283.03	8604.10	-8599.54	590.16	0.00	389820.50	777852.40	N 32 4 9.83 W 103 34 11.23	
	20800.00	90.12	179.53	12282.81	8704.10	-8699.53	590.98	0.00	389720.51	777853.23	N 32 4 8.84 W 103 34 11.23	
	20884.50	90.12	179.53	12282.63	8788.60	-8784.03	591.68	0.00	389636.02	777853.92	N 32 4 8.00 W 103 34 11.23	
	20900.00	90.12	179.53	12282.60	8804.10	-8799.53	591.80	0.00	389620.52	777854.05	N 32 4 7.85 W 103 34 11.23	
	21000.00	90.12	179.53	12282.38	8904.10	-8899.53	592.63	0.00	389520.52	777854.87	N 32 4 6.86 W 103 34 11.23	
	21100.00	90.12	179.53	12282.17	9004.10	-8999.52	593.45	0.00	389420.53	777855.69	N 32 4 5.87 W 103 34 11.23	
	21200.00	90.12	179.53	12281.95	9104.10	-9099.52	594.27	0.00	389320.54	777856.51	N 32 4 4.88 W 103 34 11.23	
	21300.00	90.12	179.53	12281.73	9204.10	-9199.52	595.09	0.00	389220.54	777857.34	N 32 4 3.89 W 103 34 11.22	
	21400.00	90.12	179.53	12281.52	9304.10	-9299.51	595.91	0.00	389120.55	777858.16	N 32 4 2.90 W 103 34 11.22	
	21500.00	90.12	179.53	12281.30	9404.10	-9399.51	596.74	0.00	389020.56	777858.98	N 32 4 1.91 W 103 34 11.22	
	21600.00	90.12	179.53	12281.09	9504.10	-9499.50	597.56	0.00	388920.56	777859.80	N 32 4 0.92 W 103 34 11.22	
	21700.00	90.12	179.53	12280.87	9604.10	-9599.50	598.38	0.00	388820.57	777860.62	N 32 3 59.93 W 103 34 11.22	

Comments	MD (ft)	Incl (°)	Azim Grid (°)	TVD (ft)	VSEC (ft)	NS (ft)	EW (ft)	DLS (°/100ft)	Northing (ftUS)	Easting (ftUS)	Latitude (N/S ° ' ")	Longitude (E/W ° ' ")
Wolfcamp Y Sand Cimarex Red Hills Unit #21H - PBHL [100' FSL, 330' FEL]	21800.00	90.12	179.53	12280.66	9704.10	-9699.50	599.20	0.00	388720.58	777861.45	N 32	3 58.94 W 103 34 11.22
	21900.00	90.12	179.53	12280.44	9804.10	-9799.49	600.03	0.00	388620.58	777862.27	N 32	3 57.95 W 103 34 11.22
	22000.00	90.12	179.53	12280.23	9904.10	-9899.49	600.85	0.00	388520.59	777863.09	N 32	3 56.96 W 103 34 11.22
	22100.00	90.12	179.53	12280.01	10004.09	-9999.49	601.67	0.00	388420.59	777863.91	N 32	3 55.97 W 103 34 11.21
	22104.65	90.12	179.53	12280.00	10008.74	-10004.13	601.71	0.00	388415.95	777863.95	N 32	3 55.93 W 103 34 11.21

Survey Type: Non-Def Plan

Survey Error Model: ISCWSA Rev 0 *** 3-D 95.000% Confidence 2.7955 sigma
Survey Program:

Description	Part	MD From (ft)	MD To (ft)	EOU Freq (ft)	Hole Size (in)	Casing Diameter (in)	Expected Max Inclination (deg)	Survey Tool Type	Borehole / Survey
	1	0.000	26.000	1/100.000	30.000	30.000		NAL_MWD_IFR1+MS-Depth Only	Red Hills Unit #21H / Cimarex Red Hills Unit #21H Rev0 RM 11Sept19
	1	26.000	22104.645	1/100.000	30.000	30.000		NAL_MWD_IFR1+MS	Red Hills Unit #21H / Cimarex Red Hills Unit #21H Rev0 RM



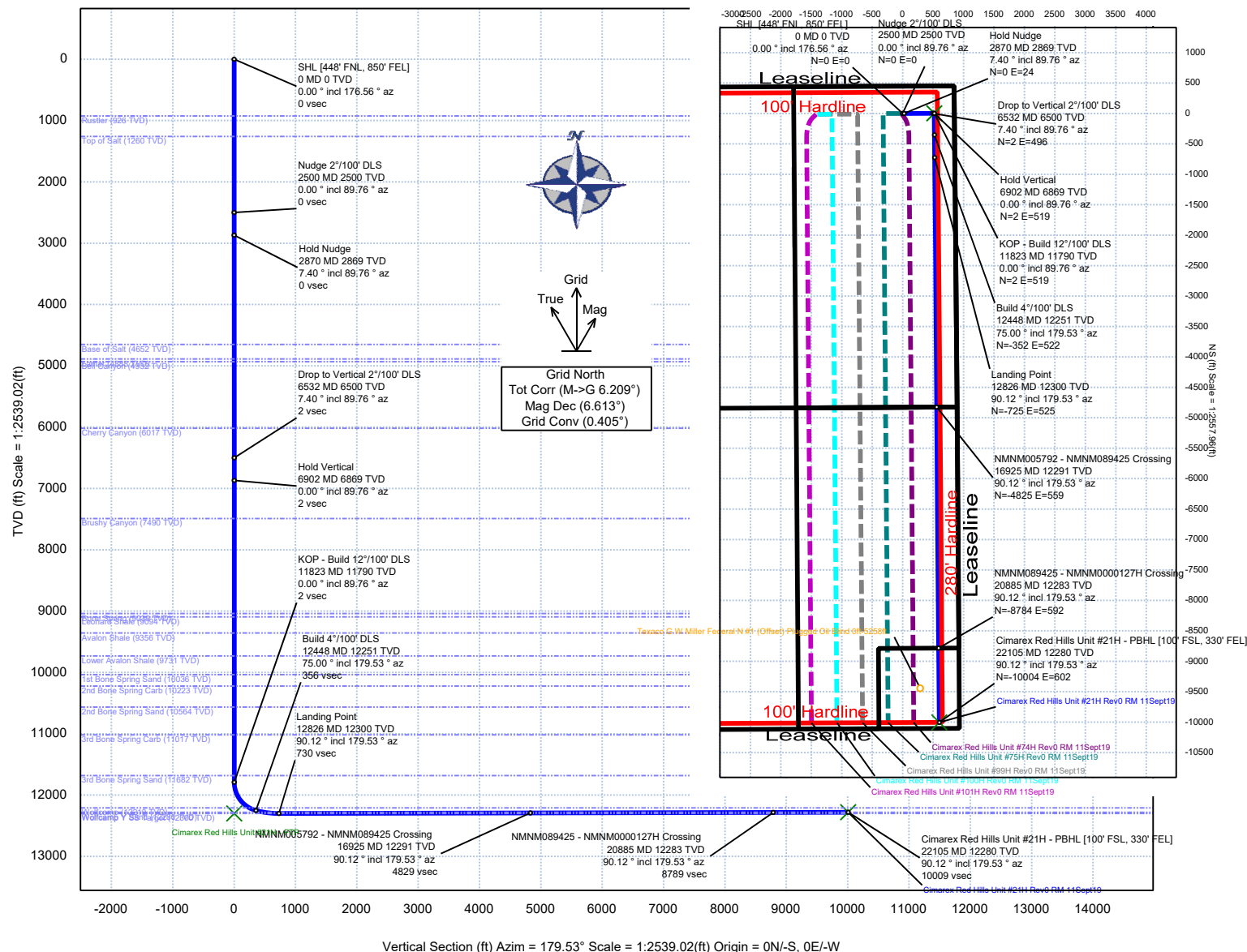
Cimarex Energy

Rev 0



Borehole: <div>Red Hills Unit #21H</div>			Well: <div>Red Hills Unit #21H</div>			Field: <div>NM Lea County (NAD 83)</div>			Structure: <div>Cimarex Red Hills Unit #21H</div>		
Gravity & Magnetic Parameters						Surface Location NAD83 New Mexico State Plane, Eastern Zone, US Feet			Miscellaneous		
Model: HDGM 2019		Dip: 59.691°		Date: 11-Sep-2019		Lat: N 32 5 34.96		Northing: 398419.79NUS		Grid Conv: 0.4048°	
MagDec: 6.613°		FS: 47724.261nT		Gravity FS: 998.438mgn (9.80665 Based)		Lon: W 103 34 17.39		Easting: 777262.26NUS		Scale Fact: 0.99997284	
									Slot: New Slot		
									TVD Ref: RKB(3367.4ft above MSL)		
									Plan: Cimarex Red Hills Unit #21H Rev0 RM 11Sept19		

EW (ft) Scale = 1:2557.96(ft)



Critical Point	MD	INCL	AZIM	TVD	VSEC	N(+)/S(-)	E(+)/W(-)	DLS
SHL [448' FNL, 850' FEL]	0.00	0.00	176.56	0.00	0.00	0.00	0.00	
Rustler	926.00	0.00	89.76	926.00	0.00	0.00	0.00	0.00
Top of Salt	1260.00	0.00	89.76	1260.00	0.00	0.00	0.00	0.00
Nudge 2°/100' DLS	2500.00	0.00	89.76	2500.00	0.00	0.00	0.00	0.00
Hold Nudge	2870.10	7.40	89.76	2869.07	0.10	23.87	0.00	0.00
Base of Salt	4668.01	7.40	89.76	4652.00	1.02	1.08	255.50	0.00
Lamar	4905.99	7.40	89.76	4888.00	1.14	1.21	286.16	0.00
Bell Canyon	4950.36	7.40	89.76	4932.00	1.16	1.24	291.87	0.00
Cherry Canyon	6044.48	7.40	89.76	6017.00	1.72	1.84	432.83	0.00
Drop to Vertical 2°/100' DLS	6531.54	7.40	89.76	6500.00	1.97	2.10	495.57	0.00
Hold Vertical	6901.64	0.00	89.76	6869.07	2.07	2.20	519.45	0.00
Brushy Canyon	7522.57	0.00	89.76	7490.00	2.07	2.20	519.45	0.00
Bone Spring	9071.57	0.00	89.76	9039.00	2.07	2.20	519.45	0.00
Leonard Shale	9126.57	0.00	89.76	9094.00	2.07	2.20	519.45	0.00
Avalon Shale	9388.57	0.00	89.76	9356.00	2.07	2.20	519.45	0.00
Lower Avalon Shale	9763.57	0.00	89.76	9731.00	2.07	2.20	519.45	0.00
1st Bone Spring Sand	10068.57	0.00	89.76	10036.00	2.07	2.20	519.45	0.00
2nd Bone Spring Carb	10255.57	0.00	89.76	10223.00	2.07	2.20	519.45	0.00
2nd Bone Spring Sand	10596.57	0.00	89.76	10564.00	2.07	2.20	519.45	0.00
3rd Bone Spring Carb	11049.57	0.00	89.76	11017.00	2.07	2.20	519.45	0.00
3rd Bone Spring Sand	11714.57	0.00	89.76	11682.00	2.07	2.20	519.45	0.00
KOP - Build 12°/100' DLS	11822.57	0.00	89.76	11790.00	2.07	2.20	519.45	0.00
Wolfcamp	12335.90	61.60	179.53	12210.00	252.44	-248.16	521.50	12.00
Build 4°/100' DLS	12447.57	75.00	179.53	12251.20	355.95	-351.67	522.36	12.00
Wolfcamp Y Sand	12582.90	80.41	179.53	12280.00	488.14	-483.85	523.44	4.00
Wolfcamp Y SS Target	12819.46	89.88	179.53	12300.00	723.58	-719.28	525.38	4.00
Landing Point	12825.66	90.12	179.53	12300.00	729.77	-725.48	525.43	4.00
Wolfcamp Y SS Target	12825.66	90.12	179.53	12300.00	729.77	-725.48	525.43	4.00
NMNM005792 - NMNM089425 Crossing	16925.10	90.12	179.53	12291.16	4829.21	-4824.77	559.13	0.00
NMNM089425 - NMNM0000127H Crossing	20884.50	90.12	179.53	12282.63	8788.60	-8784.03	591.68	0.00
Wolfcamp Y Sand	22104.65	90.12	179.53	12280.00	10008.74	-10004.13	601.71	0.00
Cimarex Red Hills Unit #21H - PBHL [100' FSL, 330' FEL]	22104.65	90.12	179.53	12280.00	10008.74	-10004.13	601.71	0.00
Wolfcamp A2				12280.00				
Wolfcamp A1				12302.00				



Cimarex Red Hills Unit #21H Rev0 RM 11Sept19 Anti-Collision Summary Report

Analysis Date-24hr Time: September 11, 2019 - 17:14
Client: Cimarex Energy
Field: NM Lea County (NAD 83)
Structure: Cimarex Red Hills Unit #21H
Slot: New Slot
Well: Red Hills Unit #21H
Borehole: Red Hills Unit #21H
Scan MD Range: 0.00ft ~ 22104.65ft

Analysis Method: 3D Least Distance
Reference Trajectory: Cimarex Red Hills Unit #21H Rev0 RM 11Sept19 (Non-Def Plan)
Depth Interval: Every 10.00 Measured Depth (ft)
Rule Set: NAL Procedure: D&M AntiCollision Standard S002
Min Pts: All local minima indicated.
Version / Patch: 2.10.782.0
Database \ Project: US1153APP452.dir.slb.com\drilling-NM Lea County 2.10

Trajectory Error Model: ISCWSA0 3-D 95.000% Confidence 2.7955 sigma, for subject well. For offset wells, error model version is specified with each well respectively.

Offset Trajectories Summary

Offset Selection Criteria

Wellhead distance scan: Restricted within 63115.14 ft
 Selection filters:
 - Definitive Surveys - Definitive Plans - Definitive surveys exclude definitive plans
 - All Non-Def Surveys when no Def-Survey is set in a borehole - All Non-Def Plans when no Def-Plan is set in a borehole

Offset Trajectory	Separation			Allow Dev. (ft)	Sep. Fact.	Controlling Rule	Reference Trajectory		Risk Level			Alert	Status
	Ct-Ct (ft)	MAS (ft)	EOU (ft)				MD (ft)	TVD (ft)	Alert	Minor	Major		

Results highlighted: Sep-Factor separation <= 1.50 ft

Cimarex Red Hills Unit #74H
 Rev0 RM 11Sept19 (Non-Def
 Plan)

Fail Minor

20.00	16.50	17.50	3.50	N/A	MAS = 5.03 (m)	0.00	0.00	CtCt<=15m<15.00				Enter Alert	
20.00	16.50	17.50	3.50	19693.27	MAS = 5.03 (m)	26.00	26.00					WRP	
20.00	20.01	5.83	0.00	1.50	OSF1.50	1920.00	1920.00		OSF<1.50			Enter Minor	
20.00	25.47	2.19	-5.47	1.14	OSF1.50	2500.00	2500.00					MinPt-CtCt	
20.02	25.55	2.16	-5.53	1.14	OSF1.50	2510.00	2510.00					MINPT-O-EOU	
20.07	25.62	2.16	-5.54	1.14	OSF1.50	2520.00	2520.00					MinPts	
26.30	26.64	7.71	-0.34	1.48	OSF1.50	2690.00	2689.86		OSF>1.50			Exit Minor	
92.82	29.90	72.05	62.92	4.95	OSF1.50	3250.00	3245.81	OSF>5.00				Exit Alert	
539.25	98.08	473.03	441.17	8.42	OSF1.50	11790.00	11757.43					MinPt-O-SF	
420.48	93.82	357.10	326.66	6.87	OSF1.50	12430.00	12246.34					MinPt-O-SF	
420.01	93.67	356.73	326.34	6.87	OSF1.50	12460.00	12254.36					MinPts	
419.94	92.32	357.56	327.63	6.97	OSF1.50	12850.00	12299.95					MinPt-CtCt	
419.94	127.83	333.89	292.12	5.00	OSF1.50	15650.00	12293.91	OSF<5.00				Enter Alert	
419.95	312.53	210.76	107.41	2.02	OSF1.50	22104.65	12280.00					MinPts	

Cimarex Red Hills Unit #75H
 Rev0 RM 11Sept19 (Non-Def
 Plan)

Warning Alert

40.04	32.53	37.54	7.51	N/A	MAS = 9.92 (m)	0.00	0.00	CtCt<=15m<15.00				Enter Alert	
40.04	32.53	37.54	7.51	33793.08	MAS = 9.92 (m)	26.00	26.00					WRP	
40.04	32.53	22.22	7.51	2.45	MAS = 9.92 (m)	2500.00	2500.00					MinPts	
40.06	32.53	22.19	7.53	2.44	MAS = 9.92 (m)	2510.00	2510.00					MINPT-O-EOU	
40.20	32.53	22.24	7.67	2.44	MAS = 9.92 (m)	2530.00	2530.00					MinPt-O-SF	
85.39	32.53	66.16	52.85	4.95	MAS = 9.92 (m)	2990.00	2987.97	OSF>5.00				Exit Alert	
816.00	46.17	784.39	769.83	27.94	OSF1.50	6531.54	6500.00					MinPt-O-SF	
839.88	84.01	783.04	755.87	15.41	OSF1.50	11822.57	11790.00					MinPts	
839.87	79.20	786.24	760.67	16.38	OSF1.50	12570.00	12277.79					MinPt-CtCt	

Offset Trajectory	Separation			Allow Dev. (ft)	Sep. Fact.	Controlling Rule	Reference Trajectory		Risk Level			Alert	Status
	Ct-Ct (ft)	MAS (ft)	EOU (ft)				MD (ft)	TVD (ft)	Alert	Minor	Major		
	839.88	253.94	669.75	585.94	5.00	OSF1.50	20190.00	12284.13	OSF<5.00			Enter Alert	MinPts
	839.89	313.63	629.96	526.25	4.04	OSF1.50	22104.65	12280.00					

Cimarex Red Hills Unit #99H
Rev0 RM 11Sept19 (Non-Def
Plan)

Pass

1380.14	32.81	1377.64	1347.33	N/A	MAS = 10.00 (m)	0.00	0.00	Surface
1380.14	32.81	1377.61	1347.33	54390.07	MAS = 10.00 (m)	26.00	26.00	WRP
1367.53	32.81	1349.27	1334.72	86.61	MAS = 10.00 (m)	2860.00	2859.05	MinPts
1367.53	32.81	1349.26	1334.72	86.55	MAS = 10.00 (m)	2870.00	2868.97	MINPT-O-EOU
1260.50	54.18	1223.47	1206.32	36.67	OSF1.50	7810.00	7777.43	MinPt-O-SF
1259.83	80.26	1205.41	1179.56	24.32	OSF1.50	11810.00	11777.43	MinPt-CtCt
1259.83	80.32	1205.37	1179.51	24.30	OSF1.50	11822.57	11790.00	MinPts
1259.88	76.02	1208.28	1183.85	25.73	OSF1.50	12830.00	12299.99	MinPt-CtCt
1259.88	315.98	1048.31	943.89	6.02	OSF1.50	22100.00	12280.01	MinPts
1259.88	315.98	1048.32	943.90	6.02	OSF1.50	22104.65	12280.00	TD

Cimarex Red Hills Unit #100H
Rev0 RM 11Sept19 (Non-Def
Plan)

Pass

1400.13	32.81	1397.63	1367.32	N/A	MAS = 10.00 (m)	0.00	0.00	Surface
1400.13	32.81	1397.60	1367.32	51561.00	MAS = 10.00 (m)	26.00	26.00	WRP
1400.13	32.81	1382.28	1367.32	91.03	MAS = 10.00 (m)	2500.00	2500.00	MinPts
1400.15	32.81	1382.25	1367.34	90.75	MAS = 10.00 (m)	2510.00	2510.00	MINPT-O-EOU
1419.37	32.81	1400.22	1386.56	85.08	MAS = 10.00 (m)	2840.00	2839.20	MinPt-O-SF
1513.09	38.77	1486.41	1474.33	62.48	OSF1.50	5390.00	5367.97	MinPt-O-SF
1663.89	46.89	1631.80	1617.00	56.14	OSF1.50	6600.00	6567.99	MinPt-O-SF
1679.75	85.69	1621.79	1594.06	30.24	OSF1.50	11822.57	11790.00	MinPts
1679.80	80.30	1625.43	1599.49	32.34	OSF1.50	12825.66	12300.00	MinPt-CtCt
1679.81	313.09	1470.25	1366.72	8.10	OSF1.50	22104.65	12280.00	MinPts

Cimarex Red Hills Unit #101H
Rev0 RM 11Sept19 (Non-Def
Plan)

Pass

1420.13	32.81	1417.63	1387.32	N/A	MAS = 10.00 (m)	0.00	0.00	Surface
1420.13	32.81	1417.60	1387.32	52731.07	MAS = 10.00 (m)	26.00	26.00	WRP
1420.13	32.81	1402.28	1387.32	92.34	MAS = 10.00 (m)	2500.00	2500.00	MinPts
1420.15	32.81	1402.25	1387.34	92.05	MAS = 10.00 (m)	2510.00	2510.00	MINPT-O-EOU
1923.71	57.01	1884.87	1866.70	52.87	OSF1.50	6600.00	6567.99	MinPt-O-SF
1939.60	97.81	1873.56	1841.79	30.49	OSF1.50	11750.00	11717.43	MinPts
1940.89	98.00	1874.72	1842.88	30.44	OSF1.50	11822.57	11790.00	MinPt-O-SF
2099.74	311.80	1891.04	1787.95	10.17	OSF1.50	22090.00	12280.03	MinPt-CtCt
2099.75	312.11	1890.84	1787.64	10.16	OSF1.50	22104.65	12280.00	MinPts

Cimarex Red Hills Unit #16H
MWD Final (Surcon Corrected)
(Def Survey)

Pass

3839.47	32.81	3836.94	3806.67	123188.95	MAS = 10.00 (m)	0.00	0.00	Surface
3839.45	32.81	3836.85	3806.64	40788.74	MAS = 10.00 (m)	26.00	26.00	WRP
3823.34	32.81	3815.42	3790.53	704.60	MAS = 10.00 (m)	1260.00	1260.00	MinPts
3824.06	32.81	3814.57	3791.25	546.89	MAS = 10.00 (m)	1610.00	1610.00	MINPT-O-EOU
3825.12	32.81	3814.81	3792.32	489.08	MAS = 10.00 (m)	1800.00	1800.00	MINPT-O-EOU
3831.62	32.81	3818.18	3798.82	350.03	MAS = 10.00 (m)	2500.00	2500.00	MINPT-O-EOU
3833.77	32.81	3820.12	3800.96	343.47	MAS = 10.00 (m)	2600.00	2599.98	MinPt-O-SF
3846.39	32.81	3832.72	3813.58	344.06	MAS = 10.00 (m)	2770.00	2769.60	MinPt-O-SF
3852.08	32.81	3838.39	3819.27	343.97	MAS = 10.00 (m)	2820.00	2819.33	MinPt-O-SF

Offset Trajectory	Separation			Allow Dev. (ft)	Sep. Fact.	Controlling Rule	Reference Trajectory		Risk Level			Alert	Status
	Ct-Ct (ft)	MAS (ft)	EOU (ft)				MD (ft)	TVD (ft)	Alert	Minor	Major		
4336.60	35.33	4312.21	4301.27	198.03	OSF1.50	6531.54	6500.00					MinPt-O-SF	
4774.49	49.81	4740.45	4724.68	151.30	OSF1.50	10690.00	10657.43					MinPt-O-SF	
4811.34	51.05	4776.48	4760.29	148.58	OSF1.50	10800.00	10767.43					MinPt-O-SF	
5492.48	53.49	5455.98	5438.99	161.50	OSF1.50	13330.00	12298.91					MinPt-CtCt	
5492.87	54.57	5455.65	5438.30	158.15	OSF1.50	13430.00	12298.70					MINPT-O-EOU	
5492.24	57.19	5453.28	5435.04	150.56	OSF1.50	13570.00	12298.40					MinPt-CtCt	
5479.92	80.65	5425.32	5399.27	105.13	OSF1.50	14650.00	12296.07					MinPt-CtCt	
5480.31	86.51	5421.80	5393.80	97.81	OSF1.50	14880.00	12295.57					MinPt-CtCt	
5477.41	97.85	5411.34	5379.56	86.13	OSF1.50	15310.00	12294.65					MinPt-CtCt	
5477.98	99.54	5410.79	5378.44	84.64	OSF1.50	15410.00	12294.43					MINPT-O-EOU	
5478.55	100.22	5410.91	5378.33	84.06	OSF1.50	15450.00	12294.34					MinPt-O-ADP	
5486.28	106.93	5414.15	5379.34	78.77	OSF1.50	15720.00	12293.76					MinPts	
5487.67	130.83	5399.61	5356.84	64.11	OSF1.50	16510.00	12292.06					MinPt-CtCt	
5490.70	143.95	5393.90	5346.75	58.20	OSF1.50	17010.00	12290.98					MINPT-O-EOU	
5491.85	145.35	5394.12	5346.50	57.64	OSF1.50	17080.00	12290.83					MinPt-O-ADP	
5495.36	148.79	5395.34	5346.58	56.32	OSF1.50	17220.00	12290.53					MinPt-O-ADP	
5496.44	166.02	5384.92	5330.41	50.40	OSF1.50	17730.00	12289.43					MinPt-CtCt	
5496.53	169.20	5382.89	5327.33	49.44	OSF1.50	17840.00	12289.19					MinPt-CtCt	
5497.56	172.32	5381.84	5325.24	48.54	OSF1.50	17990.00	12288.87					MINPT-O-EOU	
5499.88	175.02	5382.37	5324.87	47.80	OSF1.50	18110.00	12288.61					MinPt-O-ADP	
5493.13	194.90	5362.36	5298.23	42.81	OSF1.50	18720.00	12287.30					MinPt-CtCt	
5493.57	196.31	5361.87	5297.26	42.50	OSF1.50	18800.00	12287.12					MINPT-O-EOU	
5494.13	197.00	5361.96	5297.13	42.35	OSF1.50	18840.00	12287.04					MinPt-O-ADP	
5500.43	206.42	5361.98	5294.01	40.44	OSF1.50	19150.00	12286.37					MINPT-O-EOU	
5501.05	207.16	5362.11	5293.89	40.30	OSF1.50	19190.00	12286.28					MinPt-O-ADP	
5509.15	213.61	5365.91	5295.54	39.13	OSF1.50	19430.00	12285.76					MINPT-O-EOU	
5510.65	215.46	5366.18	5295.19	38.80	OSF1.50	19490.00	12285.64					MinPt-O-ADP	
5514.45	235.31	5356.74	5279.14	35.51	OSF1.50	20090.00	12284.34					MinPt-CtCt	
5513.69	241.29	5352.00	5272.40	34.62	OSF1.50	20290.00	12283.91					MinPt-CtCt	
5471.82	268.30	5292.12	5203.52	30.86	OSF1.50	21200.00	12281.95					MinPt-CtCt	
5472.51	270.22	5291.53	5202.29	30.65	OSF1.50	21300.00	12281.73					MINPT-O-EOU	
5473.31	271.19	5291.69	5202.13	30.54	OSF1.50	21350.00	12281.63					MinPt-O-ADP	
5486.23	280.10	5298.67	5206.14	29.63	OSF1.50	21690.00	12280.89					MinPts	
5509.27	289.97	5315.12	5219.30	28.73	OSF1.50	22104.65	12280.00					MinPt-O-SF	

Cimarex Red Hills Unit #17H
MWD Final(Surcon Corrected)
(Def Survey)

Pass

3859.44	32.81	3856.92	3826.63	190957.12	MAS = 10.00 (m)	0.00	0.00					MinPts	
3859.45	32.81	3856.87	3826.64	50908.40	MAS = 10.00 (m)	26.00	26.00					WRP	
3860.38	32.81	3855.93	3827.57	1979.41	MAS = 10.00 (m)	470.00	470.00					MINPT-O-EOU	
3869.53	32.81	3855.87	3836.73	346.33	MAS = 10.00 (m)	2510.00	2510.00					MinPts	
3869.55	32.81	3855.87	3836.75	345.69	MAS = 10.00 (m)	2520.00	2520.00					MINPT-O-EOU	
3871.47	32.81	3857.61	3838.66	340.80	MAS = 10.00 (m)	2600.00	2599.98					MinPt-O-SF	
3925.98	32.81	3911.79	3893.17	335.54	MAS = 10.00 (m)	3030.00	3027.64					MinPt-O-SF	
4091.62	32.81	4075.71	4058.81	304.99	MAS = 10.00 (m)	4000.00	3989.56					MinPt-O-SF	
4512.60	35.74	4487.95	4476.87	203.55	OSF1.50	6600.00	6567.99					MinPt-O-SF	
4526.98	34.41	4503.20	4492.56	212.67	OSF1.50	7030.00	6997.43					MinPt-CtCt	
4527.12	34.82	4503.08	4492.30	209.97	OSF1.50	7130.00	7097.43					MINPT-O-EOU	
4527.48	35.22	4503.17	4492.27	207.47	OSF1.50	7220.00	7187.43					MinPt-O-ADP	
4527.95	43.08	4498.40	4484.87	167.28	OSF1.50	8920.00	8887.43					MinPt-CtCt	
4528.15	43.74	4498.16	4484.41	164.61	OSF1.50	9050.00	9017.43					MINPT-O-EOU	
4519.03	49.89	4484.94	4469.14	142.96	OSF1.50	10280.00	10247.43					MinPt-CtCt	
4519.31	50.67	4484.70	4468.64	140.64	OSF1.50	10410.00	10377.43					MINPT-O-EOU	
4519.68	51.11	4484.77	4468.57	139.38	OSF1.50	10480.00	10447.43					MinPt-O-ADP	

Offset Trajectory	Separation			Allow Dev. (ft)	Sep. Fact.	Controlling Rule	Reference Trajectory		Risk Level			Alert	Status
	Ct-Ct (ft)	MAS (ft)	EOU (ft)				MD (ft)	TVD (ft)	Alert	Minor	Major		
4520.34	51.79	4484.98	4468.55	137.48		OSF1.50	10590.00	10557.43				MinPt-O-ADP	
4521.15	52.64	4485.22	4468.51	135.19		OSF1.50	10750.00	10717.43				MinPt-O-ADP	
4521.79	53.28	4485.43	4468.51	133.50		OSF1.50	10870.00	10837.43				MinPt-O-ADP	
4526.91	58.59	4487.02	4468.32	120.99		OSF1.50	11900.00	11867.09				MinPt-O-SF	
4526.27	58.23	4486.61	4468.03	121.76		OSF1.50	11960.00	11925.54				MinPt-O-ADP	
4526.21	58.17	4486.60	4468.04	121.89		OSF1.50	11970.00	11935.10				MINPT-O-EOU	
4526.16	57.99	4486.67	4468.17	122.29		OSF1.50	12000.00	11963.38				MinPt-CtCt	
4526.78	57.97	4487.30	4468.80	122.34		OSF1.50	12090.00	12043.67				MinPt-O-SF	
4518.94	57.24	4479.95	4461.70	123.77		OSF1.50	12280.00	12180.60				MinPt-O-SF	
4512.91	56.77	4474.23	4456.14	124.67		OSF1.50	12580.00	12279.51				MinPts	
4532.27	66.40	4487.17	4465.87	106.33		OSF1.50	13590.00	12298.35				MinPt-CtCt	
4532.40	66.79	4487.04	4465.61	105.69		OSF1.50	13630.00	12298.27				MINPT-O-EOU	
4539.55	88.97	4479.40	4450.58	78.70		OSF1.50	14660.00	12296.05				MinPt-CtCt	
4542.31	99.88	4474.89	4442.43	69.93		OSF1.50	15120.00	12295.05				MinPt-CtCt	
4543.06	110.47	4468.58	4432.59	63.08		OSF1.50	15530.00	12294.17				MinPt-CtCt	
4535.09	120.90	4453.65	4414.19	57.42		OSF1.50	15930.00	12293.31				MinPt-CtCt	
4535.56	122.53	4453.04	4413.02	56.65		OSF1.50	16020.00	12293.11				MINPT-O-EOU	
4535.97	123.03	4453.12	4412.94	56.42		OSF1.50	16050.00	12293.05				MinPt-O-ADP	
4545.67	137.05	4453.48	4408.63	50.65		OSF1.50	16510.00	12292.06				MinPt-CtCt	
4546.54	139.67	4452.59	4406.87	49.69		OSF1.50	16640.00	12291.78				MINPT-O-EOU	
4554.80	148.99	4454.64	4405.81	46.61		OSF1.50	17000.00	12291.00				MinPt-O-ADP	
4552.57	176.77	4433.90	4375.81	39.16		OSF1.50	17910.00	12289.04				MinPt-CtCt	
4553.27	179.27	4432.92	4374.00	38.62		OSF1.50	18030.00	12288.78				MINPT-O-EOU	
4554.08	180.25	4433.08	4373.83	38.41		OSF1.50	18080.00	12288.67				MinPt-O-ADP	
4559.78	186.39	4434.68	4373.38	37.17		OSF1.50	18280.00	12288.24				MINPT-O-EOU	
4560.45	187.16	4434.85	4373.29	37.02		OSF1.50	18320.00	12288.16				MinPt-O-ADP	
4557.60	213.71	4414.30	4343.89	32.35		OSF1.50	19180.00	12286.30				MinPt-CtCt	
4568.14	252.46	4399.00	4315.69	27.40		OSF1.50	20490.00	12283.48				MinPt-CtCt	
4568.93	255.00	4398.10	4313.94	27.13		OSF1.50	20610.00	12283.22				MINPT-O-EOU	
4569.33	259.25	4395.66	4310.07	26.68		OSF1.50	20720.00	12282.98				MinPt-CtCt	
4568.61	270.24	4387.62	4298.37	25.58		OSF1.50	21090.00	12282.19				MinPt-CtCt	
4572.22	288.67	4378.94	4283.55	23.95		OSF1.50	21710.00	12280.85				MinPt-CtCt	
4573.53	293.48	4377.04	4280.05	23.56		OSF1.50	21900.00	12280.44				MINPT-O-EOU	
4573.66	293.61	4377.08	4280.04	23.55		OSF1.50	21910.00	12280.42				MinPt-O-ADP	
4580.53	296.00	4382.36	4284.53	23.40		OSF1.50	22104.65	12280.00				MinPt-O-SF	

Cimarex Red Hills Unit #5H
(Offset) Gyro Off-12608ft (Def
Survey)

Pass

3881.10	32.81	3878.60	3848.30	N/A	MAS = 10.00 (m)	0.00	0.00	MinPts
3881.15	32.81	3878.59	3848.34	69142.87	MAS = 10.00 (m)	26.00	26.00	MINPT-O-EOU
3883.51	32.81	3877.64	3850.70	1149.60	MAS = 10.00 (m)	630.00	630.00	MINPT-O-EOU
3884.38	32.81	3877.73	3851.57	934.27	MAS = 10.00 (m)	780.00	780.00	MINPT-O-EOU
3884.75	32.81	3877.72	3851.94	857.53	MAS = 10.00 (m)	860.00	860.00	MINPT-O-EOU
3885.72	32.81	3877.64	3852.91	695.17	MAS = 10.00 (m)	1080.00	1080.00	MINPT-O-EOU
3888.95	32.81	3876.37	3856.14	385.72	MAS = 10.00 (m)	2010.00	2010.00	MinPts
3888.94	32.81	3876.10	3856.13	375.90	MAS = 10.00 (m)	2080.00	2080.00	MinPts
3889.01	32.81	3875.39	3856.20	349.66	MAS = 10.00 (m)	2260.00	2260.00	MinPts
3889.00	32.81	3875.26	3856.19	345.73	MAS = 10.00 (m)	2300.00	2300.00	MinPts
3889.00	32.81	3875.14	3856.19	342.24	MAS = 10.00 (m)	2330.00	2330.00	MinPts
3889.16	32.81	3874.40	3856.36	316.96	MAS = 10.00 (m)	2510.00	2510.00	MINPT-O-EOU
3890.82	32.81	3875.85	3858.01	311.81	MAS = 10.00 (m)	2600.00	2599.98	MinPt-O-SF
3943.26	32.81	3928.69	3910.45	326.67	MAS = 10.00 (m)	3160.00	3156.56	MinPt-O-SF
3958.33	32.81	3943.71	3925.52	326.50	MAS = 10.00 (m)	3300.00	3295.39	MinPt-O-SF
4321.30	35.64	4296.70	4285.66	195.48	OSF1.50	6531.54	6500.00	MinPt-O-SF

Offset Trajectory	Separation			Allow Dev. (ft)	Sep. Fact.	Controlling Rule	Reference Trajectory		Risk Level			Alert	Status
	Ct-Ct (ft)	MAS (ft)	EOU (ft)				MD (ft)	TVD (ft)	Alert	Minor	Major		
4346.23		34.23	4322.58	4312.00	205.36	OSF1.50	6920.00	6887.43				MinPt-O-SF	
4346.72		34.23	4323.07	4312.49	205.38	OSF1.50	6980.00	6947.43				MinPt-O-SF	
4371.59		44.77	4340.91	4326.82	155.06	OSF1.50	9180.00	9147.43				MINPT-O-EOU	
4371.67		44.86	4340.93	4326.81	154.70	OSF1.50	9200.00	9167.43				MinPt-O-ADP	
4373.27		46.49	4341.45	4326.78	149.04	OSF1.50	9470.00	9437.43				MINPT-O-EOU	
4373.66		46.98	4341.51	4326.68	147.40	OSF1.50	9560.00	9527.43				MINPT-O-EOU	
4372.94		48.03	4340.09	4324.92	144.00	OSF1.50	9760.00	9727.43				MinPt-CtCt	
4367.33		50.53	4332.80	4316.79	136.31	OSF1.50	10300.00	10267.43				MinPt-CtCt	
4367.43		50.85	4332.70	4316.58	135.42	OSF1.50	10360.00	10327.43				MINPT-O-EOU	
4367.63		51.08	4332.75	4316.55	134.79	OSF1.50	10400.00	10367.43				MinPt-O-ADP	
4362.01		56.48	4323.53	4305.53	121.15	OSF1.50	11370.00	11337.43				MinPt-CtCt	
4358.21		58.94	4318.08	4299.27	115.77	OSF1.50	11822.57	11790.00				MinPt-O-SF	
4137.49		57.67	4098.21	4079.83	112.43	OSF1.50	13450.00	12298.65				MinPt-CtCt	
4137.51		57.72	4098.19	4079.79	112.32	OSF1.50	13460.00	12298.63				MINPT-O-EOU	
4137.55		57.78	4098.20	4079.77	112.21	OSF1.50	13470.00	12298.61				MinPt-O-ADP	
4834.73		79.74	4780.73	4754.99	93.84	OSF1.50	15950.00	12293.27				MinPt-O-SF	
9593.19		101.05	9524.99	9492.14	145.98	OSF1.50	22104.65	12280.00				TD	

Texaco G W Miller Federal N
#1 (Offset) Plugged Oil Blind
0ft-5258ft (Def Survey)

Pass

9448.14	32.81	9445.64	9415.33	N/A	MAS = 10.00 (m)	0.00	0.00					Surface	
9448.11	32.81	9445.61	9415.31	N/A	MAS = 10.00 (m)	10.00	10.00					MinPt-O-SF	
9448.10	32.81	9445.60	9415.29	N/A	MAS = 10.00 (m)	26.00	26.00					WRP	
9444.88	1419.51	8497.70	8025.37	10.00	OSF1.50	4600.00	4584.56					MinPt-CtCt	
9445.32	1639.81	8351.28	7805.51	8.65	OSF1.50	5310.00	5288.64					MinPts	
9884.97	1157.72	9112.33	8727.25	12.83	OSF1.50	14580.00	12296.22					MinPt-O-SF	
7105.90	336.47	6880.75	6769.42	31.90	OSF1.50	20350.00	12283.78					MinPt-O-ADP	
7002.68	221.04	6854.48	6781.64	48.05	OSF1.50	21560.00	12281.17					MinPt-CtCt	
7024.08	266.92	6845.29	6757.15	39.83	OSF1.50	22104.65	12280.00					MinPts	

PECOS DISTRICT DRILLING CONDITIONS OF APPROVAL

OPERATOR'S NAME:	Cimarex Energy Company
LEASE NO.:	NMNM0005792
WELL NAME & NO.:	Red Hills Unit 21H
SURFACE HOLE FOOTAGE:	448'/N & 850'/E
BOTTOM HOLE FOOTAGE:	100'/S & 330'/E
LOCATION:	Section 33, T.25 S., R.33 E., NMPM
COUNTY:	Lea County, New Mexico

COA

H2S	<input checked="" type="radio"/> Yes	<input type="radio"/> No	
Potash	<input checked="" type="radio"/> None	<input type="radio"/> Secretary	<input type="radio"/> R-111-P
Cave/Karst Potential	<input checked="" type="radio"/> Low	<input type="radio"/> Medium	<input type="radio"/> High
Cave/Karst Potential	<input type="radio"/> Critical		
Variance	<input type="radio"/> None	<input checked="" type="radio"/> Flex Hose	<input type="radio"/> Other
Wellhead	<input type="radio"/> Conventional	<input checked="" type="radio"/> Multibowl	<input type="radio"/> Both
Other	<input type="checkbox"/> 4 String Area	<input type="checkbox"/> Capitan Reef	<input type="checkbox"/> WIPP
Other	<input checked="" type="checkbox"/> Fluid Filled	<input type="checkbox"/> Cement Squeeze	<input type="checkbox"/> Pilot Hole
Special Requirements	<input type="checkbox"/> Water Disposal	<input type="checkbox"/> COM	<input checked="" type="checkbox"/> Unit

A. HYDROGEN SULFIDE

A Hydrogen Sulfide (H2S) Drilling Plan shall be activated 500 feet prior to drilling into the **Bell Canyon** Formation. As a result, the Hydrogen Sulfide area must meet Onshore Order 6 requirements, which includes equipment and personnel/public protection items. If Hydrogen Sulfide is encountered, please provide measured values and formations to the BLM.

B. CASING

1. The **10-3/4 inch** surface casing shall be set at approximately **976 feet** (a minimum of **25 feet (Lea County)**) into the Rustler Anhydrite and above the salt) and cemented to the surface.
 - a. If cement does not circulate to the surface, the appropriate BLM office shall be notified and a temperature survey utilizing an electronic type temperature survey with surface log readout will be used or a cement bond log shall be run to verify the top of the cement. Temperature survey will be run a minimum of six hours after pumping cement and ideally between 8-10 hours after completing the cement job.

- b. Wait on cement (WOC) time for a primary cement job will be a minimum of **8 hours** or 500 pounds compressive strength, whichever is greater. (This is to include the lead cement)
- c. Wait on cement (WOC) time for a remedial job will be a minimum of 4 hours after bringing cement to surface or 500 pounds compressive strength, whichever is greater.
- d. If cement falls back, remedial cementing will be done prior to drilling out that string.

Intermediate casing must be kept fluid filled to meet BLM minimum collapse requirement.

2. The minimum required fill of cement behind the **7-5/8 inch** intermediate casing and shall be set at approximately **12,448 feet** is:
 - Cement to surface. If cement does not circulate see B.1.a, c-d above.
Wait on cement (WOC) time for a primary cement job is to include the lead cement slurry due to cave/karst or potash.
3. The minimum required fill of cement behind the **5-1/2 inch** production casing is:
 - Cement should tie-back at least **200 feet** into previous casing string. Operator shall provide method of verification.

C. PRESSURE CONTROL

1. Variance approved to use flex line from BOP to choke manifold. Manufacturer's specification to be readily available. No external damage to flex line. Flex line to be installed as straight as possible (no hard bends).'
2. Minimum working pressure of the blowout preventer (BOP) and related equipment (BOPE) required for drilling below the surface casing shoe shall be **5000 (5M) psi**.
3. Operator has proposed a multi-bowl wellhead assembly. This assembly will only be tested when installed on the surface casing. Minimum working pressure of the blowout preventer (BOP) and related equipment (BOPE) required for drilling below the intermediate casing shoe shall be **10,000 (10M) psi**. **Variance is approved to use a 10,000 (10M) Annular which shall be tested to 10,000 (10M) psi.**
 - a. Wellhead shall be installed by manufacturer's representatives, submit documentation with subsequent sundry.
 - b. If the welding is performed by a third party, the manufacturer's representative shall monitor the temperature to verify that it does not exceed the maximum temperature of the seal.
 - c. Manufacturer representative shall install the test plug for the initial BOP test.

- d. If the cement does not circulate and one inch operations would have been possible with a standard wellhead, the well head shall be cut off, cementing operations performed and another wellhead installed.
- e. Whenever any seal subject to test pressure is broken, all the tests in OOGO2.III.A.2.i must be followed.

D. SPECIAL REQUIREMENT (S)

Unit Wells

The well sign for a unit well shall include the unit number in addition to the surface and bottom hole lease numbers. This also applies to participating area numbers. If a participating area has not been established, the operator can use the general unit designation, but will replace the unit number with the participating area number when the sign is replaced.

Commercial Well Determination

A commercial well determination shall be submitted after production has been established for at least six months. **(This is not necessary for secondary recovery unit wells)**

GENERAL REQUIREMENTS

The BLM is to be notified in advance for a representative to witness:

- a. Spudding well (minimum of 24 hours)
- b. Setting and/or Cementing of all casing strings (minimum of 4 hours)
- c. BOPE tests (minimum of 4 hours)

☒ Eddy County

Call the Carlsbad Field Office, 620 East Greene St., Carlsbad, NM 88220, (575) 361-2822

☒ Lea County

Call the Hobbs Field Station, 414 West Taylor, Hobbs NM 88240, (575) 393-3612

1. Unless the production casing has been run and cemented or the well has been properly plugged, the drilling rig shall not be removed from over the hole without prior approval.
 - a. In the event the operator has proposed to drill multiple wells utilizing a skid/walking rig. Operator shall secure the wellbore on the current well, after installing and testing the wellhead, by installing a blind flange of like pressure rating to the wellhead and a pressure gauge that can be monitored while drilling is performed on the other well(s).
 - b. When the operator proposes to set surface casing with Spudder Rig
 - Notify the BLM when moving in and removing the Spudder Rig.
 - Notify the BLM when moving in the 2nd Rig. Rig to be moved in within 90 days of notification that Spudder Rig has left the location.
 - BOP/BOPE test to be conducted per Onshore Oil and Gas Order No. 2 as soon as 2nd Rig is rigged up on well.
2. Floor controls are required for 3M or Greater systems. These controls will be on the rig floor, unobstructed, readily accessible to the driller and will be operational at all times during drilling and/or completion activities. Rig floor is defined as the area immediately around the rotary table; the area immediately above the substructure on which the draw works are located, this does not include the dog house or stairway area.
3. The record of the drilling rate along with the GR/N well log run from TD to surface (horizontal well – vertical portion of hole) shall be submitted to the BLM office as well as all other logs run on the borehole 30 days from completion. If available, a digital copy of the logs is to be submitted in addition to the paper copies. The Rustler top and top and bottom of Salt are to be recorded on the Completion Report.

A. CASING

1. Changes to the approved APD casing program need prior approval if the items substituted are of lesser grade or different casing size or are Non-API. The Operator can exchange the components of the proposal with that of superior strength (i.e. changing from J-55 to N-80, or from 36# to 40#). Changes to the approved cement program need prior approval if the altered cement plan has less volume or strength or if the changes are substantial (i.e. Multistage tool, ECP, etc.). The initial wellhead installed on the well will remain on the well with spools used as needed.
2. Wait on cement (WOC) for Potash Areas: After cementing but before commencing any tests, the casing string shall stand cemented under pressure until both of the following conditions have been met: 1) cement reaches a minimum compressive strength of 500 psi for all cement blends, 2) until cement has been in place at least 24 hours. WOC time will be recorded in the driller's log. The casing integrity test can be done (prior to the cement setting up) immediately after bumping the plug.
3. Wait on cement (WOC) for Water Basin: After cementing but before commencing any tests, the casing string shall stand cemented under pressure until both of the following conditions have been met: 1) cement reaches a minimum compressive strength of 500 psi at the shoe, 2) until cement has been in place at least 8 hours. WOC time will be recorded in the driller's log. See individual casing strings for details regarding lead cement slurry requirements. The casing integrity test can be done (prior to the cement setting up) immediately after bumping the plug.
4. Provide compressive strengths including hours to reach required 500 pounds compressive strength prior to cementing each casing string. Have well specific cement details onsite prior to pumping the cement for each casing string.
5. No pea gravel permitted for remedial or fall back remedial without prior authorization from the BLM engineer.
6. On that portion of any well approved for a 5M BOPE system or greater, a pressure integrity test of each casing shoe shall be performed. Formation at the shoe shall be tested to a minimum of the mud weight equivalent anticipated to control the formation pressure to the next casing depth or at total depth of the well. This test shall be performed before drilling more than 20 feet of new hole.
7. If hardband drill pipe is rotated inside casing, returns will be monitored for metal. If metal is found in samples, drill pipe will be pulled and rubber protectors which have a larger diameter than the tool joints of the drill pipe will be installed prior to continuing drilling operations.
8. Whenever a casing string is cemented in the R-111-P potash area, the NMOCD requirements shall be followed.

B. PRESSURE CONTROL

1. All blowout preventer (BOP) and related equipment (BOPE) shall comply with well control requirements as described in Onshore Oil and Gas Order No. 2 and API RP 53 Sec. 17.
2. If a variance is approved for a flexible hose to be installed from the BOP to the choke manifold, the following requirements apply: The flex line must meet the requirements of API 16C. Check condition of flexible line from BOP to choke manifold, replace if exterior is damaged or if line fails test. Line to be as straight as possible with no hard bends and is to be anchored according to Manufacturer's requirements. The flexible hose can be exchanged with a hose of equal size and equal or greater pressure rating. Anchor requirements, specification sheet and hydrostatic pressure test certification matching the hose in service, to be onsite for review. These documents shall be posted in the company man's trailer and on the rig floor.
3. 5M or higher system requires an HCR valve, remote kill line and annular to match. The remote kill line is to be installed prior to testing the system and tested to stack pressure.
4. If the operator has proposed a multi-bowl wellhead assembly in the APD. The following requirements must be met:
 - a. Wellhead shall be installed by manufacturer's representatives, submit documentation with subsequent sundry.
 - b. If the welding is performed by a third party, the manufacturer's representative shall monitor the temperature to verify that it does not exceed the maximum temperature of the seal.
 - c. Manufacturer representative shall install the test plug for the initial BOP test.
 - d. Whenever any seal subject to test pressure is broken, all the tests in OOGO2.III.A.2.i must be followed.
 - e. If the cement does not circulate and one inch operations would have been possible with a standard wellhead, the well head shall be cut off, cementing operations performed and another wellhead installed.
5. The appropriate BLM office shall be notified a minimum of **4** hours in advance for a representative to witness the tests.
 - a. In a water basin, for all casing strings utilizing slips, these are to be set as soon as the crew and rig are ready and any fallback cement remediation has been done. The casing cut-off and BOP installation can be initiated four hours after installing the slips, which will be approximately six hours after bumping the plug. For those casing strings not using slips, the minimum wait time before cut-off is eight hours after bumping the plug. BOP/BOPE testing can begin after cut-off or once cement reaches 500 psi compressive strength (including

lead when specified), whichever is greater. However, if the float does not hold, cut-off cannot be initiated until cement reaches 500 psi compressive strength (including lead when specified).

- b. In potash areas, for all casing strings utilizing slips, these are to be set as soon as the crew and rig are ready and any fallback cement remediation has been done. For all casing strings, casing cut-off and BOP installation can be initiated at twelve hours after bumping the plug. However, **no tests** shall commence until the cement has had a minimum of 24 hours setup time, except the casing pressure test can be initiated immediately after bumping the plug (only applies to single stage cement jobs).
- c. The tests shall be done by an independent service company utilizing a test plug not a cup or J-packer. The operator also has the option of utilizing an independent tester to test without a plug (i.e. against the casing) pursuant to Onshore Order 2 with the pressure not to exceed 70% of the burst rating for the casing. Any test against the casing must meet the WOC time for water basin (8 hours) or potash (24 hours) or 500 pounds compressive strength, whichever is greater, prior to initiating the test (see casing segment as lead cement may be critical item).
- d. The test shall be run on a 5000 psi chart for a 2-3M BOP/BOP, on a 10000 psi chart for a 5M BOP/BOPE and on a 15000 psi chart for a 10M BOP/BOPE. If a linear chart is used, it shall be a one hour chart. A circular chart shall have a maximum 2 hour clock. If a twelve hour or twenty-four hour chart is used, tester shall make a notation that it is run with a two hour clock.
- e. The results of the test shall be reported to the appropriate BLM office.
- f. All tests are required to be recorded on a calibrated test chart. A copy of the BOP/BOPE test chart and a copy of independent service company test will be submitted to the appropriate BLM office.
- g. The BOP/BOPE test shall include a low pressure test from 250 to 300 psi. The test will be held for a minimum of 10 minutes if test is done with a test plug and 30 minutes without a test plug. This test shall be performed prior to the test at full stack pressure.
- h. BOP/BOPE must be tested by an independent service company within 500 feet of the top of the Wolfcamp formation if the time between the setting of the intermediate casing and reaching this depth exceeds 20 days. This test does not exclude the test prior to drilling out the casing shoe as per Onshore Order No. 2.

C. DRILLING MUD

Mud system monitoring equipment, with derrick floor indicators and visual and audio alarms, shall be operating before drilling into the Wolfcamp formation, and shall be used until production casing is run and cemented.

D. WASTE MATERIAL AND FLUIDS

All waste (i.e. drilling fluids, trash, salts, chemicals, sewage, gray water, etc.) created as a result of drilling operations and completion operations shall be safely contained and disposed of properly at a waste disposal facility. No waste material or fluid shall be disposed of on the well location or surrounding area.

Porto-johns and trash containers will be on-location during fracturing operations or any other crew-intensive operations.

YJ (06/04/2020)

**PECOS DISTRICT
SURFACE USE
CONDITIONS OF APPROVAL**

OPERATOR'S NAME:	Cimarex Energy Company
LEASE NO.:	NMNM0024368A
COUNTY:	Lea

Wells:**E2W2 Well Pad 1**

Red Hills Unit 47H

Surface Hole Location: 527' FNL & 2062' FWL, Section 33, T.25 S, R.33 E

Bottom Hole Location: 100' FSL & 2430' FWL, Section 04, T.26 S, R.33 E

Red Hills Unit 48H

Surface Hole Location: 527' FNL & 2042' FWL, Section 33, T.25 S, R.33 E

Bottom Hole Location: 100' FSL & 2010' FWL, Section 04, T.26 S, R.33 E

Red Hills Unit 49H

Surface Hole Location: 527' FNL & 2022' FWL, Section 33, T.25 S, R.33 E

Bottom Hole Location: 100' FSL & 1590' FWL, Section 04, T.26 S, R.33 E

Red Hills Unit 50H

Surface Hole Location: 467' FNL & 1982' FWL, Section 33, T.25 S, R.33 E

Bottom Hole Location: TBD

Red Hills Unit 51H

Surface Hole Location: 467' FNL & 1962' FWL, Section 33, T.25 S, R.33 E

Bottom Hole Location: TBD

Red Hills Unit 52H

Surface Hole Location: 467' FNL & 1942' FWL, Section 33, T.25 S, R.33 E

Bottom Hole Location: TBD

Red Hills Unit 53H

Surface Hole Location: 467' FNL & 1922' FWL, Section 33, T.25 S, R.33 E

Bottom Hole Location: TBD

Red Hills Unit 54H

Surface Hole Location: 407' FNL & 2062' FWL, Section 33, T.25 S, R.33 E

Bottom Hole Location: TBD

Red Hills Unit 55H

Surface Hole Location: 407' FNL & 2042' FWL, Section 33, T.25 S, R.33 E

Bottom Hole Location: TBD

Red Hills Unit 56H

Surface Hole Location: 407' FNL & 2022' FWL, Section 33, T.25 S, R.33 E

Bottom Hole Location: TBD

Red Hills Unit 57H

Surface Hole Location: 347' FNL & 1982' FWL, Section 33, T.25 S, R.33 E

Bottom Hole Location: TBD

Red Hills Unit 58H

Surface Hole Location: 347' FNL & 1962' FWL, Section 33, T.25 S, R.33 E

Bottom Hole Location: TBD

Red Hills Unit 59H

Surface Hole Location: 347' FNL & 1942' FWL, Section 33, T.25 S, R.33 E

Bottom Hole Location: TBD

Red Hills Unit 60H

Surface Hole Location: 347' FNL & 1922' FWL, Section 33, T.25 S, R.33 E

Bottom Hole Location: TBD

E2E2 Well Pad 2

Red Hills Unit #21H

Surface Hole Location: 448' FNL & 850' FEL, Section 33, T.25 S, R.33 E

Bottom Hole Location: 100' FSL & 330' FEL, Section 4, T.26 S, R.33 E

Red Hills Unit #74H

Surface Hole Location: 448' FNL & 870' FEL, Section 33, T.25 S, R.33 E

Bottom Hole Location: 100' FSL & 750' FEL, Section 4, T.26 S, R.33 E

Red Hills Unit #75H

Surface Hole Location: 448' FNL & 890' FEL, Section 33, T.25 S, R.33 E

Bottom Hole Location: 100' FSL & 1170' FEL, Section 4, T.26 S, R.33 E

Red Hills Unit #76H

Surface Hole Location: 388' FNL & 930' FEL, Section 33, T.25 S, R.33 E

Bottom Hole Location: TBD

Red Hills Unit #77H

Surface Hole Location: 388' FNL & 950' FEL, Section 33, T.25 S, R.33 E

Bottom Hole Location: TBD

Red Hills Unit #78H

Surface Hole Location: 388' FNL & 970' FEL, Section 33, T.25 S, R.33 E

Bottom Hole Location: TBD

Red Hills Unit #79H

Surface Hole Location: 388' FNL & 990' FEL, Section 33, T.25 S, R.33 E

Bottom Hole Location: TBD

Red Hills Unit #80H

Surface Hole Location: 328' FNL & 850' FEL, Section 33, T.25 S, R.33 E

Bottom Hole Location: TBD

Red Hills Unit #81H

Surface Hole Location: 328' FNL & 870' FEL, Section 33, T.25 S, R.33 E

Bottom Hole Location: TBD

Red Hills Unit #82H

Surface Hole Location: 328' FNL & 890' FEL, Section 33, T.25 S, R.33 E

Bottom Hole Location: TBD

Red Hills Unit #83H

Surface Hole Location: 268' FNL & 930' FEL, Section 33, T.25 S, R.33 E

Bottom Hole Location: TBD

Red Hills Unit #84H

Surface Hole Location: 268' FNL & 950' FEL, Section 33, T.25 S, R.33 E

Bottom Hole Location: TBD

Red Hills Unit #85H

Surface Hole Location: 268' FNL & 970' FEL, Section 33, T.25 S, R.33 E

Bottom Hole Location: TBD

Red Hills Unit #86H

Surface Hole Location: 268' FNL & 990' FEL, Section 33, T.25 S, R.33 E

Bottom Hole Location: TBD

W2E2 Well Pad 3

Red Hills Unit #99H

Surface Hole Location: 455' FNL & 2230' FEL, Section 33, T.25 S, R.33 E

Bottom Hole Location: 100' FSL & 1590' FEL, Section 4, T.26 S, R.33 E

Red Hills Unit #100H

Surface Hole Location: 455' FNL & 2250' FEL, Section 33, T.25 S, R.33 E

Bottom Hole Location: 100' FSL & 2010' FEL, Section 4, T.26 S, R.33 E

Red Hills Unit #101H

Surface Hole Location: 455' FNL & 2270' FEL, Section 33, T.25 S, R.33 E

Bottom Hole Location: 100' FSL & 2430' FEL, Section 4, T.26 S, R.33 E

Red Hills Unit #102H

Surface Hole Location: 395' FNL & 2310' FEL, Section 33, T.25 S, R.33 E

Bottom Hole Location: TBD

Red Hills Unit #103H

Surface Hole Location: 395' FNL & 2330' FEL, Section 33, T.25 S, R.33 E

Bottom Hole Location: TBD

Red Hills Unit #104H

Surface Hole Location: 395' FNL & 2350' FEL, Section 33, T.25 S, R.33 E

Bottom Hole Location: TBD

Red Hills Unit #105H

Surface Hole Location: 395' FNL & 2370' FEL, Section 33, T.25 S, R.33 E

Bottom Hole Location: TBD

Red Hills Unit #106H

Surface Hole Location: 335' FNL & 2230' FEL, Section 33, T.25 S, R.33 E

Bottom Hole Location: TBD

Red Hills Unit #107H

Surface Hole Location: 335' FNL & 2250' FEL, Section 33, T.25 S, R.33 E

Bottom Hole Location: TBD

Red Hills Unit #108H

Surface Hole Location: 335' FNL & 2270' FEL, Section 33, T.25 S, R.33 E

Bottom Hole Location: TBD

Red Hills Unit #109H

Surface Hole Location: 275' FNL & 2310' FEL, Section 33, T.25 S, R.33 E

Bottom Hole Location: TBD

Red Hills Unit #110H

Surface Hole Location: 275' FNL & 2330' FEL, Section 33, T.25 S, R.33 E

Bottom Hole Location: TBD

Red Hills Unit #111H

Surface Hole Location: 275' FNL & 2350' FEL, Section 33, T.25 S, R.33 E

Bottom Hole Location: TBD

Red Hills Unit #112H

Surface Hole Location: 275' FNL & 2370' FEL, Section 33, T.25 S, R.33 E

Bottom Hole Location: TBD

TABLE OF CONTENTS

Standard Conditions of Approval (COA) apply to this APD. If any deviations to these standards exist or special COAs are required, the section with the deviation or requirement will be checked below.

- ☐ **General Provisions**
- ☐ **Permit Expiration**
- ☐ **Archaeology, Paleontology, and Historical Sites**
- ☐ **Noxious Weeds**
- ☒ **Special Requirements**
 - Watershed
 - Range
 - Lesser Prairie Chicken
- ☐ **Construction**
 - Notification
 - Topsoil
 - Closed Loop System
 - Federal Mineral Material Pits
 - Well Pads
 - Roads
- ☐ **Road Section Diagram**
- ☒ **Production (Post Drilling)**
 - Well Structures & Facilities
 - Pipelines
 - Electric Lines
- ☐ **Interim Reclamation**
- ☐ **Final Abandonment & Reclamation**

I. GENERAL PROVISIONS

The approval of the Application For Permit To Drill (APD) is in compliance with all applicable laws and regulations: 43 Code of Federal Regulations 3160, the lease terms, Onshore Oil and Gas Orders, Notices To Lessees, New Mexico Oil Conservation Division (NMOCD) Rules, National Historical Preservation Act As Amended, and instructions and orders of the Authorized Officer. Any request for a variance shall be submitted to the Authorized Officer on Form 3160-5, Sundry Notices and Report on Wells.

II. PERMIT EXPIRATION

If the permit terminates prior to drilling and drilling cannot be commenced within 60 days after expiration, an operator is required to submit Form 3160-5, Sundry Notices and Reports on Wells, requesting surface reclamation requirements for any surface disturbance. However, if the operator will be able to initiate drilling within 60 days after the expiration of the permit, the operator must have set the conductor pipe in order to allow for an extension of 60 days beyond the expiration date of the APD. (Filing of a Sundry Notice is required for this 60 day extension.)

III. ARCHAEOLOGICAL, PALEONTOLOGY & HISTORICAL SITES

Any cultural resource (historic or prehistoric site or object) discovered by the holder, or any person working on the holder's behalf, on public or Federal land shall be immediately reported to the Authorized Officer. The holder shall suspend all operations in the immediate area of such discovery until written authorization to proceed is issued by the Authorized Officer. An evaluation of the discovery will be made by the Authorized Officer to determine appropriate actions to prevent the loss of significant cultural or scientific values. The holder will be responsible for the cost of evaluation and any decision as to the proper mitigation measures will be made by the Authorized Officer after consulting with the holder.

OR

If the entire project is covered under the Permian Basin Programmatic Agreement (cultural resources only):

The proponent has contributed funds commensurate to the undertaking into an account for offsite mitigation. Participation in the PA serves as mitigation for the effects of this project on cultural resources. If any human skeletal remains, funerary objects, sacred objects, or objects of cultural patrimony are discovered at any time during construction, all construction activities shall halt and the BLM will be notified as soon as possible within 24 hours. Work shall not resume until a Notice to Proceed is issued by the BLM. See information below discussing NAGPRA.

If the proposed project is split between a Class III inventory and a Permian Basin Programmatic Agreement contribution, the portion of the project covered under Class III inventory should default to the first paragraph stipulations.

The holder is hereby obligated to comply with procedures established in the Native American Graves Protection and Repatriation Act (NAGPRA) to protect such cultural items as human remains, associated funerary objects, sacred objects, and objects of cultural patrimony discovered inadvertently during the course of project implementation. In the event that any of the cultural items listed above are discovered during the course of project work, the proponent shall immediately halt the disturbance and contact the BLM within 24 hours for instructions. The proponent or initiator of any project shall be held responsible for protecting, evaluating, reporting, excavating, treating, and disposing of these cultural items according to the procedures established by the BLM in consultation with Indian Tribes."

Any paleontological resource (historic or prehistoric site or object) discovered by the holder, or any person working on the holder's behalf, on public or Federal land shall be immediately reported to the Authorized Officer. The holder shall suspend all operations in the immediate area of such discovery until written authorization to proceed is issued by the Authorized Officer. An evaluation of the discovery will be made by the Authorized Officer to determine appropriate actions to prevent the loss of significant cultural or scientific values. The holder will be responsible for the cost of evaluation and any decision as to the proper mitigation measures will be made by the Authorized Officer after consulting with the holder.

IV. NOXIOUS WEEDS

The operator shall be held responsible if noxious weeds become established within the areas of operations. Weed control shall be required on the disturbed land where noxious weeds exist, which includes the roads, pads, associated pipeline corridor, and adjacent land affected by the establishment of weeds due to this action. The operator shall consult with the Authorized Officer for acceptable weed control methods, which include following EPA and BLM requirements and policies.

SPECIAL REQUIREMENT(S)

Watershed:

The entire well pad(s) will be bermed to prevent oil, salt, and other chemical contaminants from leaving the well pad. The compacted berm shall be constructed at a minimum of 12 inches with impermeable mineral material (e.g. caliche). Topsoil shall not be used to construct the berm. No water flow from the uphill side(s) of the pad shall be allowed to enter the well pad. The integrity of the berm shall be maintained around the surfaced pad throughout the life of the well and around the downsized pad after interim reclamation has been completed. Any water erosion that may occur due to the construction of the well pad during the life of the well will be quickly corrected and proper measures will be taken to prevent future erosion. Stockpiling of topsoil is required. The topsoil shall be stockpiled in an appropriate location to prevent loss of soil due to water or wind erosion and not used for berming or erosion control. If fluid collects within the bermed area, the fluid must be vacuumed into a safe container and disposed of properly at a state approved facility.

TANK BATTERY:

Tank battery locations will be lined and bermed. A 20 mil permanent liner will be installed with a 4 oz. felt backing to prevent tears or punctures. Tank battery berms must be large enough to contain 1 ½ times the content of the largest tank or 24 hour production, whichever is greater. Automatic shut off, check valves, or similar systems will be installed for tanks to minimize the effects of catastrophic line failures used in production or drilling.

BURIED/SURFACE LINE(S):

When crossing ephemeral drainages the pipeline(s) will be buried to a minimum depth of 48 inches from the top of pipe to ground level. Erosion control methods such as gabions and/or rock aprons should be placed on both up and downstream sides of the pipeline crossing. In addition, curled (weed free) wood/straw fiber wattles/logs and/or silt fences should be placed on the downstream side for sediment control during construction and maintained until soils and vegetation have stabilized. Water bars should be placed within the ROW to divert and dissipate surface runoff. A pipeline access road is not permitted to cross these ephemeral drainages. Traffic should be diverted to a preexisting route. Additional seeding may be required in floodplains and drainages to restore energy dissipating vegetation.

Prior to pipeline installation/construction a leak detection plan will be developed. The method(s) could incorporate gauges to detect pressure drops, situating valves and lines so they can be visually inspected periodically or installing electronic sensors to alarm when a leak is present.

The leak detection plan will incorporate an automatic shut off system that will be installed for proposed pipelines to minimize the effects of an undesirable event.

ELECTRIC LINE(S):

Any water erosion that may occur due to the construction of overhead electric line and during the life of the power line will be quickly corrected and proper measures will be taken to prevent future erosion. A power pole should not be placed in drainages, playas, wetlands, riparian areas, or floodplains and must span across the features at a distance away that would not promote further erosion.

TEMPORARY USE FRESH WATER FRAC LINE(S):

Once the temporary use exceeds the timeline of 180 days and/or with a 90 day extension status; further analysis will be required if the applicant pursues to turn the temporary ROW into a permanent ROW.

Range:**Cattleguards**

Where a permanent cattlegaurd is approved, an appropriately sized cattleguard(s) sufficient to carry out the project shall be installed and maintained at fence crossing(s). Any existing cattleguard(s) on the access road shall be repaired or replaced if they are damaged or have deteriorated beyond practical use. The operator shall be responsible for the condition of the existing cattleguard(s) that are in place and are utilized during lease operations. A gate shall be constructed on one side of the cattleguard and fastened securely to H-braces.

Fence Requirement

Where entry granted across a fence line, the fence must be braced and tied off on both sides of the passageway prior to cutting. Once the work is completed, the fence will be restored to its prior condition, or better. The operator shall notify the private surface landowner or the grazing allotment holder prior to crossing any fence(s).

Livestock Watering Requirement

Any damage to structures that provide water to livestock throughout the life of the well, caused by operations from the well site, must be immediately corrected by the operator. The operator must notify the BLM office (575-234-5972) and the private surface landowner or the grazing allotment holder if any damage occurs to structures that provide water to livestock.

Lesser Prairie Chicken:**Timing Limitation Stipulation/Condition of Approval for Lesser Prairie-Chicken:**

Oil and gas activities including 3-D geophysical exploration, and drilling will not be allowed in lesser prairie-chicken habitat during the period from March 1st through June 15th annually. During that period, other activities that produce noise or involve human activity, such as the maintenance of oil and gas facilities, geophysical exploration other than 3-D operations, and pipeline, road, and well pad construction, will be allowed except between 3:00 am and 9:00 am. The 3:00 am to 9:00 am restriction will not apply to normal, around-the-clock operations, such as venting, flaring, or pumping, which do not require a human presence during this period. Additionally, no new drilling will be allowed within up to 200 meters of leks known at the time of permitting. Normal vehicle use on existing roads will not be restricted. Exhaust noise from pump jack engines must be muffled or otherwise controlled so as not to exceed 75 db measured at 30 ft. from the source of the noise.

Timing Limitation Exceptions:

The Carlsbad Field Office will publish an annual map of where the LPC timing and noise stipulations and conditions of approval (Limitations) will apply for the identified year (between March 1 and June 15) based on the latest survey information. The LPC Timing Area map will identify areas which are Habitat Areas (HA), Isolated Population Area (IPA), and Primary Population Area (PPA). The LPC

Timing Area map will also have an area in red crosshatch. The red crosshatch area is the only area where an operator is required to submit a request for exception to the LPC Limitations. If an operator is operating outside the red crosshatch area, the LPC Limitations do not apply for that year and an exception to LPC Limitations is not required.

Ground-level Abandoned Well Marker to avoid raptor perching:

Upon the plugging and subsequent abandonment of the well, the well marker will be installed at ground level on a plate containing the pertinent information for the plugged well. For more installation details, contact the Carlsbad Field Office at 575-234-5972.

V. CONSTRUCTION

A. NOTIFICATION

The BLM shall administer compliance and monitor construction of the access road and well pad. Notify the Carlsbad Field Office at (575) 234-5909 at least 3 working days prior to commencing construction of the access road and/or well pad.

When construction operations are being conducted on this well, the operator shall have the approved APD and Conditions of Approval (COA) on the well site and they shall be made available upon request by the Authorized Officer.

B. TOPSOIL

The operator shall strip the top portion of the soil (root zone) from the entire well pad area and stockpile the topsoil along the edge of the well pad as depicted in the APD. The root zone is typically six (6) inches in depth. All the stockpiled topsoil will be redistributed over the interim reclamation areas. Topsoil shall not be used for berming the pad or facilities. For final reclamation, the topsoil shall be spread over the entire pad area for seeding preparation.

Other subsoil (below six inches) stockpiles must be completely segregated from the topsoil stockpile. Large rocks or subsoil clods (not evident in the surrounding terrain) must be buried within the approved area for interim and final reclamation.

C. CLOSED LOOP SYSTEM

Tanks are required for drilling operations: No Pits.

The operator shall properly dispose of drilling contents at an authorized disposal site.

D. FEDERAL MINERAL MATERIALS PIT

Payment shall be made to the BLM prior to removal of any federal mineral materials. Call the Carlsbad Field Office at (575) 234-5972.

E. WELL PAD SURFACING

Surfacing of the well pad is not required.

If the operator elects to surface the well pad, the surfacing material may be required to be removed at the time of reclamation. The well pad shall be constructed in a manner which creates the smallest possible surface disturbance, consistent with safety and operational needs.

F. EXCLOSURE FENCING (CELLARS & PITS)

Exclosure Fencing

The operator will install and maintain exclosure fencing for all open well cellars to prevent access to public, livestock, and large forms of wildlife before and after drilling operations until the pit is free of fluids and the operator initiates backfilling. (For examples of exclosure fencing design, refer to BLM's Oil and Gas Gold Book, Exclosure Fence Illustrations, Figure 1, Page 18.)

G. ON LEASE ACCESS ROADS**Road Width**

The access road shall have a driving surface that creates the smallest possible surface disturbance and does not exceed fourteen (14) feet in width. The maximum width of surface disturbance, when constructing the access road, shall not exceed twenty-five (25) feet.

Surfacing

Surfacing material is not required on the new access road driving surface. If the operator elects to surface the new access road or pad, the surfacing material may be required to be removed at the time of reclamation.

Where possible, no improvements should be made on the unsurfaced access road other than to remove vegetation as necessary, road irregularities, safety issues, or to fill low areas that may sustain standing water.

The Authorized Officer reserves the right to require surfacing of any portion of the access road at any time deemed necessary. Surfacing may be required in the event the road deteriorates, erodes, road traffic increases, or it is determined to be beneficial for future field development. The surfacing depth and type of material will be determined at the time of notification.

Crowning

Crowning shall be done on the access road driving surface. The road crown shall have a grade of approximately 2% (i.e., a 1" crown on a 14' wide road). The road shall conform to Figure 1; cross section and plans for typical road construction.

Ditching

Ditching shall be required on both sides of the road.

Turnouts

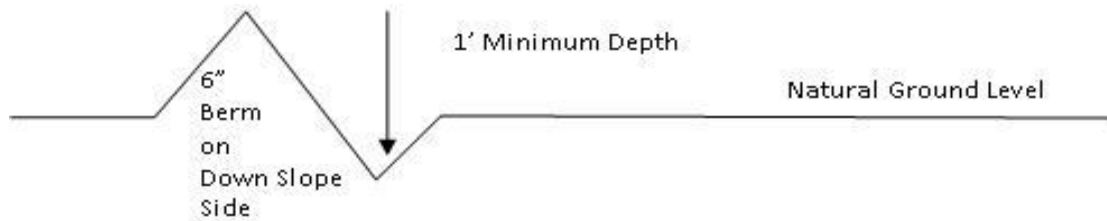
Vehicle turnouts shall be constructed on the road. Turnouts shall be intervisible with interval spacing distance less than 1000 feet. Turnouts shall conform to Figure 1; cross section and plans for typical road construction.

Drainage

Drainage control systems shall be constructed on the entire length of road (e.g. ditches, sidehill out-sloping and in-sloping, lead-off ditches, culvert installation, and low water crossings).

A typical lead-off ditch has a minimum depth of 1 foot below and a berm of 6 inches above natural ground level. The berm shall be on the down-slope side of the lead-off ditch.

Cross Section of a Typical Lead-off Ditch



All lead-off ditches shall be graded to drain water with a 1 percent minimum to 3 percent maximum ditch slope. The spacing interval are variable for lead-off ditches and shall be determined according to the formula for spacing intervals of lead-off ditches, but may be amended depending upon existing soil types and centerline road slope (in %);

Formula for Spacing Interval of Lead-off Ditches

Example - On a 4% road slope that is 400 feet long, the water flow shall drain water into a lead-off ditch. Spacing interval shall be determined by the following formula:

$$400 \text{ foot road with } 4\% \text{ road slope: } \frac{400'}{4\%} + 100' = 200' \text{ lead-off ditch interval}$$

Cattle guards

An appropriately sized cattle guard sufficient to carry out the project shall be installed and maintained at fence/road crossings. Any existing cattle guards on the access road route shall be repaired or replaced if they are damaged or have deteriorated beyond practical use. The operator shall be responsible for the condition of the existing cattle guards that are in place and are utilized during lease operations.

Fence Requirement

Where entry is granted across a fence line, the fence shall be braced and tied off on both sides of the passageway prior to cutting. The operator shall notify the private surface landowner or the grazing allotment holder prior to crossing any fences.

Public Access

Public access on this road shall not be restricted by the operator without specific written approval granted by the Authorized Officer.

Construction Steps

1. Salvage topsoil
2. Construct road

3. Redistribute topsoil
4. Revegetate slopes



Figure 1. Cross-sections and plans for typical road sections representative of BLM resource or FS local and higher-class roads.

VI. PRODUCTION (POST DRILLING)

A. WELL STRUCTURES & FACILITIES

Placement of Production Facilities

Production facilities should be placed on the well pad to allow for maximum interim recontouring and revegetation of the well location.

Exclosure Netting (Open-top Tanks)

Immediately following active drilling or completion operations, the operator will take actions necessary to prevent wildlife and livestock access, including avian wildlife, to all open-topped tanks that contain or have the potential to contain salinity sufficient to cause harm to wildlife or livestock, hydrocarbons, or Resource Conservation and Recovery Act of 1976-exempt hazardous substances. At a minimum, the operator will net, screen, or cover open-topped tanks to exclude wildlife and livestock and prevent mortality. If the operator uses netting, the operator will cover and secure the open portion of the tank to prevent wildlife entry. The operator will net, screen, or cover the tanks until the operator removes the tanks from the location or the tanks no longer contain substances that could be harmful to wildlife or livestock. Use a maximum netting mesh size of 1 ½ inches. The netting must not be in contact with fluids and must not have holes or gaps.

Chemical and Fuel Secondary Containment and Exclosure Screening

The operator will prevent all hazardous, poisonous, flammable, and toxic substances from coming into contact with soil and water. At a minimum, the operator will install and maintain an impervious secondary containment system for any tank or barrel containing hazardous, poisonous, flammable, or toxic substances sufficient to contain the contents of the tank or barrel and any drips, leaks, and anticipated precipitation. The operator will dispose of fluids within the containment system that do not meet applicable state or U. S. Environmental Protection Agency livestock water standards in accordance with state law; the operator must not drain the fluids to the soil or ground. The operator will design, construct, and maintain all secondary containment systems to prevent wildlife and livestock exposure to harmful substances. At a minimum, the operator will install effective wildlife and livestock exclosure systems such as fencing, netting, expanded metal mesh, lids, and grate covers. Use a maximum netting mesh size of 1 ½ inches.

Open-Vent Exhaust Stack Exclosures

The operator will construct, modify, equip, and maintain all open-vent exhaust stacks on production equipment to prevent birds and bats from entering, and to discourage perching, roosting, and nesting. (*Recommended exclosure structures on open-vent exhaust stacks are in the shape of a cone.*) Production equipment includes, but may not be limited to, tanks, heater-treaters, separators, dehydrators, flare stacks, in-line units, and compressor mufflers.

Containment Structures

Proposed production facilities such as storage tanks and other vessels will have a secondary containment structure that is constructed to hold the capacity of 1.5 times the largest tank, plus freeboard to account for precipitation, unless more stringent protective requirements are deemed necessary.

Painting Requirement

All above-ground structures including meter housing that are not subject to safety requirements shall be painted a flat non-reflective paint color, **Shale Green** from the BLM Standard Environmental Color Chart (CC-001: June 2008).

B. PIPELINES

- The BLM, Carlsbad Field Office, will be informed immediately if any subsurface drainage channels, passages, or voids are intersected by trenching, and no pipe will be laid in the trench at that point until clearance has been issued by the Authorized Officer.
- If a void is encountered alignments may be rerouted to avoid the karst feature and lessen; the potential of subsidence or collapse of karst features, buildup of toxic or combustible gas, or other possible impacts to cave and karst resources from the buried pipeline.
- Special restoration stipulations or realignment may be required at such intersections, if any.
- A leak detection plan **will be submitted to the BLM Carlsbad Field Office for approval** prior to pipeline installation. The method could incorporate gauges to detect pressure drops, siting valves and lines so they can be visually inspected periodically or installing electronic sensors to alarm when a leak is present. The leak detection plan will incorporate an automatic shut off system that will be installed for proposed pipelines to minimize the effects of an undesirable event.
- Regular monitoring is required to quickly identify leaks for their immediate and proper treatment.
- All spills or leaks will be reported to the BLM immediately for their immediate and proper treatment.

CONDITIONS OF APPROVAL FOR TEMPORARY FRESHWATER PIPELINES

Subject to the terms and conditions which are shown below, is hereby approved:

- Surface pipelines 6.5 inch to 16 inch OD may be in place for no more than 180 days not including installation. Cimarex will submit a ROW application for these temporary freshwater pipelines when they need them.
- Surface pipeline will be in operation for no more than 180 days; a maximum of seven (7) days authorized for installation of the lay flat poly line prior to operation.
- Surface pipelines larger than 6.5 inch to-16-inch OD may be in place for no more than 180 days from date of authorization; 5/1/2018, unless a SF-299 is submitted within 30 days of this decision expiring requesting a long term buried fresh water pipeline, and processing of the SF-299 is not yet complete at the end of 30 days, in which case the line(s) may be left in place until a decision is made on the SF-299.
- All lines will be removed when no longer in use.
- Width of authorized use is 15-feet.
- No blading and/or earthwork will be allowed in order to place the pipeline except burying the line under crossings.
- The pipeline will be buried under all intersecting routes, including BLM-designated trails and access roads into caliche pits, rancher watering stations, etc. All such buried crossings will be removed when the pipeline is removed, unless otherwise approved by the Authorized Officer. Pipelines larger than 6.5-inch OD may utilize other crossing methodologies (but any fill placed over pipeline must be brought in from off-site).
- Pipeline crossings of fences should be avoided where possible. If a crossing is necessary, contact fence owner [usually the grazing permittee] prior to installation, and install by threading pipeline under the lowest wire of the fence; pipeline should never cross on top of any fence wires.

- The pipeline shall stay within 10 feet maximum of existing disturbance (e.g. lease road, pipeline right-of-way etc.); placement should be within 5 feet whenever possible.
- Placement of pumps or other high-maintenance equipment shall be installed along maintained lease roads.
- Gas or diesel pumps, generators, or compressors shall be placed on visqueen matting [or 20 mil plastic] and in a containment structure capable of containing all potentially released fuels. Containments must be protected against wildlife deaths in accordance with oilfield best management practices.
- Due to potential damage to natural resources, no work is allowed during inclement weather.
- Pipeline will be marked with your company's name and contact number, at beginning and ending points, at all public-road crossings, and at intervals not exceeding every 0.6 mile, unless otherwise approved by the Authorized Officer.
- Should unforeseen damage occur to resources, BLM will require reclamation of the impacted land.
- No water may be released into the environment without BLM consent.
- Placement of surface pipelines along or under public roadways may require permits from the road authority.
- This authorization is limited to lands under BLM jurisdiction. If your proposed pipeline crosses lands under private ownership or under other agency jurisdiction, you are responsible for obtaining all necessary permits and approvals from those parties.

BURIED PIPELINE STIPULATIONS

A copy of the application (Grant, APD, or Sundry Notice) and attachments, including conditions of approval, survey plat and/or map, will be on location during construction. BLM personnel may request to you a copy of your permit during construction to ensure compliance with all stipulations.

Holder agrees to comply with the following stipulations to the satisfaction of the Authorized Officer:

1. The Holder shall indemnify the United States against any liability for damage to life or property arising from the occupancy or use of public lands under this grant.
2. The Holder shall comply with all applicable Federal laws and regulations existing or hereafter enacted or promulgated. In any event, the holder shall comply with the Toxic Substances Control Act of 1976 as amended, 15 USC 2601 et seq. (1982) with regards to any toxic substances that are used, generated by or stored on the right-of-way or on facilities authorized under this right-of-way grant. (See 40 CFR Part 702-799 and especially, provisions on polychlorinated biphenyls, 40 CFR 761.1-761.193.) Additionally, any release of toxic substances (leaks, spills, etc.) in excess of the reportable quantity established by 40 CFR Part 117 shall be reported as required by the Comprehensive Environmental Response, Compensation, and Liability Act, section 102b. A copy of any report required or requested by any Federal agency or State government as a result of a reportable release or spill of any toxic substances shall be furnished to the authorized officer concurrent with the filing of the reports to the involved Federal agency or State government.

3. The holder agrees to indemnify the United States against any liability arising from the release of any hazardous substance or hazardous waste (as these terms are defined in the Comprehensive Environmental Response, Compensation and Liability Act of 1980, 42 U.S.C. 9601, et seq. or the Resource Conservation and Recovery Act, 42 U.S.C.6901, et seq.) on the Right-of-Way (unless the release or threatened release is wholly unrelated to the Right-of-Way holder's activity on the Right-of-Way), or resulting from the activity of the Right-of-Way holder on the Right-of-Way. This agreement applies without regard to whether a release is caused by the holder, its agent, or unrelated third parties.

4. If, during any phase of the construction, operation, maintenance, or termination of the pipeline, any oil or other pollutant should be discharged from the pipeline system, impacting Federal lands, the control and total removal, disposal, and cleaning up of such oil or other pollutant, wherever found, shall be the responsibility of holder, regardless of fault. Upon failure of holder to control, dispose of, or clean up such discharge on or affecting Federal lands, or to repair all damages resulting therefrom, on the Federal lands, the Authorized Officer may take such measures as he deems necessary to control and clean up the discharge and restore the area, including where appropriate, the aquatic environment and fish and wildlife habitats, at the full expense of the holder. Such action by the Authorized Officer shall not relieve holder of any responsibility as provided herein.

5. All construction and maintenance activity will be confined to the authorized right-of-way.

6. The pipeline will be buried with a minimum cover of 36 inches between the top of the pipe and ground level.

7. The maximum allowable disturbance for construction in this right-of-way will be 30 feet:

- Blading of vegetation within the right-of-way will be allowed: maximum width of blading operations will not exceed 20 feet. The trench is included in this area. (*Blading is defined as the complete removal of brush and ground vegetation.*)
- Clearing of brush species within the right-of-way will be allowed: maximum width of clearing operations will not exceed 30 feet. The trench and bladed area are included in this area. (*Clearing is defined as the removal of brush while leaving ground vegetation (grasses, weeds, etc.) intact. Clearing is best accomplished by holding the blade 4 to 6 inches above the ground surface.*)
- The remaining area of the right-of-way (if any) shall only be disturbed by compressing the vegetation. (*Compressing can be caused by vehicle tires, placement of equipment, etc.*)

8. The holder shall stockpile an adequate amount of topsoil where blading is allowed. The topsoil to be stripped is approximately 6 inches in depth. The topsoil will be segregated from other spoil piles from trench construction. The topsoil will be evenly distributed over the bladed area for the preparation of seeding.

9. The holder shall minimize disturbance to existing fences and other improvements on public lands. The holder is required to promptly repair improvements to at least their former state. Functional use of these improvements will be maintained at all times. The holder will contact the

owner of any improvements prior to disturbing them. When necessary to pass through a fence line, the fence shall be braced on both sides of the passageway prior to cutting of the fence. No permanent gates will be allowed unless approved by the Authorized Officer.

10. Vegetation, soil, and rocks left as a result of construction or maintenance activity will be randomly scattered on this right-of-way and will not be left in rows, piles, or berms, unless otherwise approved by the Authorized Officer. The entire right-of-way shall be recontoured to match the surrounding landscape. The backfilled soil shall be compacted and a 6 inch berm will be left over the ditch line to allow for settling back to grade.

11. In those areas where erosion control structures are required to stabilize soil conditions, the holder will install such structures as are suitable for the specific soil conditions being encountered and which are in accordance with sound resource management practices.

12. The holder will reseed all disturbed areas. Seeding will be done according to the attached seeding requirements, using the following seed mix.

- | | |
|--|--|
| <input type="checkbox"/> seed mixture 1 | <input type="checkbox"/> seed mixture 3 |
| <input checked="" type="checkbox"/> seed mixture 2 | <input type="checkbox"/> seed mixture 4 |
| <input type="checkbox"/> seed mixture 2/LPC | <input type="checkbox"/> Aplomado Falcon Mixture |

13. All above-ground structures not subject to safety requirements shall be painted by the holder to blend with the natural color of the landscape. The paint used shall be color which simulates "Standard Environmental Colors" – **Shale Green**, Munsell Soil Color No. 5Y 4/2.

14. The pipeline will be identified by signs at the point of origin and completion of the right-of-way and at all road crossings. At a minimum, signs will state the holder's name, BLM serial number, and the product being transported. All signs and information thereon will be posted in a permanent, conspicuous manner, and will be maintained in a legible condition for the life of the pipeline.

15. The holder shall not use the pipeline route as a road for purposes other than routine maintenance as determined necessary by the Authorized Officer in consultation with the holder before maintenance begins. The holder will take whatever steps are necessary to ensure that the pipeline route is not used as a roadway. As determined necessary during the life of the pipeline, the Authorized Officer may ask the holder to construct temporary deterrence structures.

16. Any cultural resource (historic or prehistoric site or object) discovered by the holder, or any person working on the holder's behalf, on public or Federal land shall be immediately reported to the Authorized Officer. The holder shall suspend all operations in the immediate area of such discovery until written authorization to proceed is issued by the Authorized Officer. An evaluation of the discovery will be made by the Authorized Officer to determine appropriate actions to prevent the loss of significant cultural or scientific values. The holder will be responsible for the cost of evaluation and any decision as to the proper mitigation measures will be made by the Authorized Officer after consulting with the holder.

OR

If the entire project is covered under the Permian Basin Programmatic Agreement (cultural resources only):

The proponent has contributed funds commensurate to the undertaking into an account for offsite mitigation. Participation in the PA serves as mitigation for the effects of this project on cultural resources. If any human skeletal remains, funerary objects, sacred objects, or objects of cultural patrimony are discovered at any time during construction, all construction activities shall halt and the BLM will be notified as soon as possible within 24 hours. Work shall not resume until a Notice to Proceed is issued by the BLM. See Stipulation 17 for more information.

If the proposed project is split between a Class III inventory and a Permian Basin Programmatic Agreement contribution, the portion of the project covered under Class III inventory should default to the first paragraph stipulations.

17. The holder is hereby obligated to comply with procedures established in the Native American Graves Protection and Repatriation Act (NAGPRA) to protect such cultural items as human remains, associated funerary objects, sacred objects, and objects of cultural patrimony discovered inadvertently during the course of project implementation. In the event that any of the cultural items listed above are discovered during the course of project work, the proponent shall immediately halt the disturbance and contact the BLM within 24 hours for instructions. The proponent or initiator of any project shall be held responsible for protecting, evaluating, reporting, excavating, treating, and disposing of these cultural items according to the procedures established by the BLM in consultation with Indian Tribes."

18. Any paleontological resource (historic or prehistoric site or object) discovered by the holder, or any person working on the holder's behalf, on public or Federal land shall be immediately reported to the Authorized Officer. The holder shall suspend all operations in the immediate area of such discovery until written authorization to proceed is issued by the Authorized Officer. An evaluation of the discovery will be made by the Authorized Officer to determine appropriate actions to prevent the loss of significant cultural or scientific values. The holder will be responsible for the cost of evaluation and any decision as to the proper mitigation measures will be made by the Authorized Officer after consulting with the holder.

19. The operator shall be held responsible if noxious weeds become established within the areas of operations. Weed control shall be required on the disturbed land where noxious weeds exist, which includes associated roads, pipeline corridor and adjacent land affected by the establishment of weeds due to this action. The operator shall consult with the Authorized Officer for acceptable weed control methods, which include following EPA and BLM requirements and policies.

20. Escape Ramps - The operator will construct and maintain pipeline/utility trenches [that are not otherwise fenced, screened, or netted] to prevent livestock, wildlife, and humans from becoming entrapped. At a minimum, the operator will construct and maintain escape ramps, ladders, or other methods of avian and terrestrial wildlife escape in the trenches according to the following criteria:

- a. Any trench left open for eight (8) hours or less is not required to have escape ramps; however, before the trench is backfilled, the contractor/operator shall inspect the trench for wildlife, remove all trapped wildlife, and release them at least 100 yards from the trench.
- b. For trenches left open for eight (8) hours or more, earthen escape ramps (built at no more than a 30 degree slope and spaced no more than 500 feet apart) shall be placed in the trench.

21. Special Stipulations:

Lesser Prairie-Chicken

Oil and gas activities will not be allowed in lesser prairie-chicken habitat during the period from March 1st through June 15th annually. During that period, other activities that produce noise or involve human activity, such as the maintenance of oil and gas facilities, geophysical exploration other than 3-D operations, and pipeline, road, and well pad construction, will be allowed except between 3:00 am and 9:00 am. The 3:00 am to 9:00 am restriction will not apply to normal, around-the-clock operations, such as venting, flaring, or pumping, which do not require a human presence during this period. Normal vehicle use on existing roads will not be restricted. Exhaust noise from pump jack engines must be muffled or otherwise controlled so as not to exceed 75 db measured at 30 ft. from the source of the noise.

STANDARD STIPULATIONS FOR SURFACE INSTALLED PIPELINES

A copy of the Grant and attachments, including stipulations, survey plat(s) and/or map(s), shall be on location during construction. BLM personnel may request to review a copy of your permit during construction to ensure compliance with all stipulations.

Holder agrees to comply with the following stipulations to the satisfaction of the Authorized Officer:

1. Holder shall indemnify the United States against any liability for damage to life or property arising from the occupancy or use of public lands under this grant.
2. Holder shall comply with all applicable Federal laws and regulations existing or hereafter enacted or promulgated. In any event, Holder shall comply with the Toxic Substances Control Act of 1976 as amended, 15 USC § 2601 *et seq.* (1982) with regard to any toxic substances that are used, generated by or stored on the right-of-way or on facilities authorized under this right-of-way grant (see 40 CFR, Part 702-799 and in particular, provisions on polychlorinated biphenyls, 40 CFR 761.1-761.193). Additionally, any release of toxic substances (leaks, spills, etc.) in excess of the reportable quantity established by 40 CFR, Part 117 shall be reported as required by the Comprehensive Environmental Response, Compensation, and Liability Act, section 102b. A copy of any report required or requested by any Federal agency or State government as a result of a reportable release or spill of any toxic substances shall be furnished to the Authorized Officer concurrent with the filing of the reports to the involved Federal agency or State government.
3. Holder agrees to indemnify the United States against any liability arising from the release of any hazardous substance or hazardous waste (as these terms are defined in the Comprehensive Environmental Response, Compensation and Liability Act of 1980, 42 U.S.C. § 9601, *et seq.* or the Resource Conservation and Recovery Act, 42 U.S.C. 6901, *et seq.*) on the Right-of-Way (unless the release or threatened release is wholly unrelated to activity of the Right-of-Way Holder's activity on the Right-of-Way), or resulting from the activity of the Right-of-Way Holder on the Right-of-Way. This provision applies without regard to whether a release is caused by Holder, its agent, or unrelated third parties.

4. Holder shall be liable for damage or injury to the United States to the extent provided by 43 CFR Sec. 2883.1-4. Holder shall be held to a standard of strict liability for damage or injury to the United States resulting from pipe rupture, fire, or spills caused or substantially aggravated by any of the following within the right-of-way or permit area:

- a. Activities of Holder including, but not limited to: construction, operation, maintenance, and termination of the facility;
- b. Activities of other parties including, but not limited to:
 - (1) Land clearing
 - (2) Earth-disturbing and earth-moving work
 - (3) Blasting
 - (4) Vandalism and sabotage;
- c. Acts of God.

The maximum limitation for such strict liability damages shall not exceed one million dollars (\$1,000,000) for any one event, and any liability in excess of such amount shall be determined by the ordinary rules of negligence of the jurisdiction in which the damage or injury occurred.

This section shall not impose strict liability for damage or injury resulting primarily from an act of war or from the negligent acts or omissions of the United States.

5. If, during any phase of the construction, operation, maintenance, or termination of the pipeline, any oil, salt water, or other pollutant should be discharged from the pipeline system, impacting Federal lands, the control and total removal, disposal, and cleaning up of such oil, salt water, or other pollutant, wherever found, shall be the responsibility of Holder, regardless of fault. Upon failure of Holder to control, dispose of, or clean up such discharge on or affecting Federal lands, or to repair all damages resulting therefrom, on the Federal lands, the Authorized Officer may take such measures as he/she deems necessary to control and clean up the discharge and restore the area, including, where appropriate, the aquatic environment and fish and wildlife habitats, at the full expense of Holder. Such action by the Authorized Officer shall not relieve Holder of any responsibility as provided herein.

6. All construction and maintenance activity shall be confined to the authorized right-of-way width of 30 feet. If the pipeline route follows an existing road or buried pipeline right-of-way, the surface pipeline shall be installed no farther than 10 feet from the edge of the road or buried pipeline right-of-way. If existing surface pipelines prevent this distance, the proposed surface pipeline shall be installed immediately adjacent to the outer surface pipeline. All construction and maintenance activity shall be confined to existing roads or right-of-ways.

7. No blading or clearing of any vegetation shall be allowed unless approved in writing by the Authorized Officer.

8. Holder shall install the pipeline on the surface in such a manner that will minimize suspension of the pipeline across low areas in the terrain. In hummocky or dune areas, the pipeline shall be "snaked" around hummocks and dunes rather than suspended across these features.

9. The pipeline shall be buried with a minimum of 6 inches under all roads, "two-tracks," and trails. Burial of the pipe will continue for 20 feet on each side of each crossing. The condition of the road, upon completion of construction, shall be returned to at least its former state with no bumps or dips remaining in the road surface.

10. The holder shall minimize disturbance to existing fences and other improvements on public lands. The holder is required to promptly repair improvements to at least their former state. Functional use of these improvements will be maintained at all times. The holder will contact the

owner of any improvements prior to disturbing them. When necessary to pass through a fence line, the fence shall be braced on both sides of the passageway prior to cutting of the fence. No permanent gates will be allowed unless approved by the Authorized Officer.

11. In those areas where erosion control structures are required to stabilize soil conditions, the holder will install such structures as are suitable for the specific soil conditions being encountered and which are in accordance with sound resource management practices.

12. Excluding the pipe, all above-ground structures not subject to safety requirement shall be painted by the holder to blend with the natural color of the landscape. The paint used shall be a color which simulates "Standard Environmental Colors" – **Shale Green**, Munsell Soil Color No. 5Y 4/2; designated by the Rocky Mountain Five State Interagency Committee.

13. The pipeline will be identified by signs at the point of origin and completion of the right-of-way and at all road crossings. At a minimum, signs will state the holder's name, BLM serial number, and the product being transported. Signs will be maintained in a legible condition for the life of the pipeline.

14. The holder shall not use the pipeline route as a road for purposes other than routine maintenance as determined necessary by the Authorized Officer in consultation with the holder. The holder will take whatever steps are necessary to ensure that the pipeline route is not used as a roadway.

15. Any cultural resource (historic or prehistoric site or object) discovered by the holder, or any person working on the holder's behalf, on public or Federal land shall be immediately reported to the Authorized Officer. The holder shall suspend all operations in the immediate area of such discovery until written authorization to proceed is issued by the Authorized Officer. An evaluation of the discovery will be made by the Authorized Officer to determine appropriate actions to prevent the loss of significant cultural or scientific values. The holder will be responsible for the cost of evaluation and any decision as to the proper mitigation measures will be made by the Authorized Officer after consulting with the holder.

OR

If the entire project is covered under the Permian Basin Programmatic Agreement (cultural resources only):

The proponent has contributed funds commensurate to the undertaking into an account for offsite mitigation. Participation in the PA serves as mitigation for the effects of this project on cultural resources. If any human skeletal remains, funerary objects, sacred objects, or objects of cultural patrimony are discovered at any time during construction, all construction activities shall halt and the BLM will be notified as soon as possible within 24 hours. Work shall not resume until a Notice to Proceed is issued by the BLM. See Stipulation 16 for more information.

If the proposed project is split between a Class III inventory and a Permian Basin Programmatic Agreement contribution, the portion of the project covered under Class III inventory should default to the first paragraph stipulations.

16. The holder is hereby obligated to comply with procedures established in the Native American Graves Protection and Repatriation Act (NAGPRA) to protect such cultural items as human remains, associated funerary objects, sacred objects, and objects of cultural patrimony discovered inadvertently during the course of project implementation. In the event that any of the cultural items listed above are discovered during the course of project work, the proponent shall immediately halt the disturbance and contact the BLM within 24 hours for instructions. The proponent or initiator of any project shall be held responsible for protecting, evaluating, reporting, excavating, treating, and disposing of these cultural items according to the procedures established by the BLM in

consultation with Indian Tribes."

17. Any paleontological resource (historic or prehistoric site or object) discovered by the holder, or any person working on the holder's behalf, on public or Federal land shall be immediately reported to the Authorized Officer. The holder shall suspend all operations in the immediate area of such discovery until written authorization to proceed is issued by the Authorized Officer. An evaluation of the discovery will be made by the Authorized Officer to determine appropriate actions to prevent the loss of significant cultural or scientific values. The holder will be responsible for the cost of evaluation and any decision as to the proper mitigation measures will be made by the Authorized Officer after consulting with the holder.

18. The operator shall be held responsible if noxious weeds become established within the areas of operations. Weed control shall be required on the disturbed land where noxious weeds exist, which includes the roads, powerline corridor, and adjacent land affected by the establishment of weeds due to this action. The operator shall consult with the Authorized Officer for acceptable weed control methods, which include following EPA and BLM requirements and policies.

19. Surface pipelines shall be less than or equal to 4 inches and a working pressure below 125 psi.

C. ELECTRIC LINES

- Smaller powerlines will be routed around sinkholes and other karst features to avoid or lessen the possibility of encountering near surface voids and to minimize changes to runoff or possible leaks and spills from entering karst systems. Larger powerlines will adjust their pole spacing to avoid cave and karst features.
- The BLM, Carlsbad Field Office, will be informed immediately if any subsurface drainage channels, cave passages, or voids are penetrated during construction.
- No further construction will be done until clearance has been issued by the Authorized Officer.
- Special restoration stipulations or realignment may be required.

STANDARD STIPULATIONS FOR OVERHEAD ELECTRIC DISTRIBUTION LINES

A copy of the grant and attachments, including stipulations, survey plat and/or map, will be on location during construction. BLM personnel may request to you a copy of your permit during construction to ensure compliance with all stipulations.

Holder agrees to comply with the following stipulations to the satisfaction of the Authorized Officer:

1. The holder shall indemnify the United States against any liability for damage to life or property arising from the occupancy or use of public lands under this grant.
2. The holder shall comply with all applicable Federal laws and regulations existing or hereafter enacted or promulgated. In any event, the holder shall comply with the Toxic Substances Control Act of 1976 as amended, 15 USC 2601 et seq. (1982) with regards to any toxic substances that are used, generated by or stored on the right-of-way or on facilities authorized under this right-of-way grant. (See 40 CFR, Part 702-799 and especially, provisions on polychlorinated biphenyls, 40 CFR 761.1-761.193.) Additionally, any release of toxic substances (leaks, spills, etc.) in excess of the reportable quantity established by 40 CFR, Part 117 shall be reported as required by the Comprehensive Environmental Response, Compensation, and Liability Act, section 102b. A copy of any report required or requested by any Federal agency or State government as a result of a reportable release or spill of any toxic substances shall be furnished to the authorized officer concurrent with the filing of the reports to the involved Federal agency or State

government.

3. The holder agrees to indemnify the United States against any liability arising from the release of any hazardous substance or hazardous waste (as these terms are defined in the Comprehensive Environmental Response, Compensation and Liability Act of 1980, 42 U.S.C. 9601, et seq. or the Resource Conservation and Recovery Act, 42 U.S.C. 6901, et seq.) on the Right-of-Way (unless the release or threatened release is wholly unrelated to the Right-of-Way holder's activity on the Right-of-Way), or resulting from the activity of the Right-of-Way holder on the Right-of-Way. This agreement applies without regard to whether a release is caused by the holder, its agent, or unrelated third parties.

4. There will be no clearing or blading of the right-of-way unless otherwise agreed to in writing by the Authorized Officer.

5. Power lines shall be constructed and designed in accordance to standards outlined in "Suggested Practices for Avian Protection on Power lines: The State of the Art in 2006" Edison Electric Institute, APLIC, and the California Energy Commission 2006 . The holder shall assume the burden and expense of proving that pole designs not shown in the above publication deter raptor perching, roosting, and nesting. Such proof shall be provided by a raptor expert approved by the Authorized Officer. The BLM reserves the right to require modification or additions to all powerline structures placed on this right-of-way, should they be necessary to ensure the safety of large perching birds. Such modifications and/or additions shall be made by the holder without liability or expense to the United States.

Raptor deterrence will consist of but not limited to the following: triangle perch discouragers shall be placed on each side of the cross arms and a nonconductive perching deterrence shall be placed on all vertical poles that extend past the cross arms.

6. The holder shall minimize disturbance to existing fences and other improvements on public lands. The holder is required to promptly repair improvements to at least their former state. Functional use of these improvements will be maintained at all times. The holder will contact the owner of any improvements prior to disturbing them. When necessary to pass through a fence line, the fence shall be braced on both sides of the passageway prior to cutting the fence. No permanent gates will be allowed unless approved by the Authorized Officer.

7. The BLM serial number assigned to this authorization shall be posted in a permanent, conspicuous manner where the power line crosses roads and at all serviced facilities. Numbers will be at least two inches high and will be affixed to the pole nearest the road crossing and at the facilities served.

8. Upon cancellation, relinquishment, or expiration of this grant, the holder shall comply with those abandonment procedures as prescribed by the Authorized Officer.

9. All surface structures (poles, lines, transformers, etc.) shall be removed within 180 days of abandonment, relinquishment, or termination of use of the serviced facility or facilities or within 180 days of abandonment, relinquishment, cancellation, or expiration of this grant, whichever comes first. This will not apply where the power line extends service to an active, adjoining facility or facilities.

10. Any cultural resource (historic or prehistoric site or object) discovered by the holder, or any person working on the holder's behalf, on public or Federal land shall be immediately reported to the Authorized Officer. The holder shall suspend all operations in the immediate area of such discovery until written authorization to proceed is issued by the Authorized Officer. An evaluation of the discovery will be made by the Authorized Officer to determine appropriate actions to prevent the loss of significant cultural or scientific values. The holder will be responsible for the cost of evaluation and any decision as to the proper mitigation measures will be made by the

Authorized Officer after consulting with the holder.

OR

If the entire project is covered under the Permian Basin Programmatic Agreement (cultural resources only):

The proponent has contributed funds commensurate to the undertaking into an account for offsite mitigation. Participation in the PA serves as mitigation for the effects of this project on cultural resources. If any human skeletal remains, funerary objects, sacred objects, or objects of cultural patrimony are discovered at any time during construction, all construction activities shall halt and the BLM will be notified as soon as possible within 24 hours. Work shall not resume until a Notice to Proceed is issued by the BLM. See Stipulation 11 for more information.

If the proposed project is split between a Class III inventory and a Permian Basin Programmatic Agreement contribution, the portion of the project covered under Class III inventory should default to the first paragraph stipulations.

11. The holder is hereby obligated to comply with procedures established in the Native American Graves Protection and Repatriation Act (NAGPRA) to protect such cultural items as human remains, associated funerary objects, sacred objects, and objects of cultural patrimony discovered inadvertently during the course of project implementation. In the event that any of the cultural items listed above are discovered during the course of project work, the proponent shall immediately halt the disturbance and contact the BLM within 24 hours for instructions. The proponent or initiator of any project shall be held responsible for protecting, evaluating, reporting, excavating, treating, and disposing of these cultural items according to the procedures established by the BLM in consultation with Indian Tribes."

12. Any paleontological resource (historic or prehistoric site or object) discovered by the holder, or any person working on the holder's behalf, on public or Federal land shall be immediately reported to the Authorized Officer. The holder shall suspend all operations in the immediate area of such discovery until written authorization to proceed is issued by the Authorized Officer. An evaluation of the discovery will be made by the Authorized Officer to determine appropriate actions to prevent the loss of significant cultural or scientific values. The holder will be responsible for the cost of evaluation and any decision as to the proper mitigation measures will be made by the Authorized Officer after consulting with the holder.

13. Special Stipulations:

For reclamation remove poles, lines, transformer, etc. and dispose of properly.

Fill in any holes from the poles removed.

Timing Limitation Stipulation/Condition of Approval for Lesser Prairie-Chicken:

Oil and gas activities including 3-D geophysical exploration, and drilling will not be allowed in lesser prairie-chicken habitat during the period from March 1st through June 15th annually.

During that period, other activities that produce noise or involve human activity, such as the maintenance of oil and gas facilities, geophysical exploration other than 3-D operations, and pipeline, road, and well pad construction, will be allowed except between 3:00 am and 9:00 am.

The 3:00 am to 9:00 am restriction will not apply to normal, around-the-clock operations, such as venting, flaring, or pumping, which do not require a human presence during this period.

Additionally, no new drilling will be allowed within up to 200 meters of leks known at the time of permitting. Normal vehicle use on existing roads will not be restricted. Exhaust noise from pump jack engines must be muffled or otherwise controlled so as not to exceed 75 db measured at 30 ft. from the source of the noise.

VII. INTERIM RECLAMATION

During the life of the development, all disturbed areas not needed for active support of production operations should undergo interim reclamation in order to minimize the environmental impacts of development on other resources and uses.

Within six (6) months of well completion, operators should work with BLM surface management specialists (Jim Amos: 575-234-5909) to devise the best strategies to reduce the size of the location. Interim reclamation should allow for remedial well operations, as well as safe and efficient removal of oil and gas.

During reclamation, the removal of caliche is important to increasing the success of revegetating the site. Removed caliche that is free of contaminants may be used for road repairs, fire walls or for building other roads and locations. In order to operate the well or complete workover operations, it may be necessary to drive, park and operate on restored interim vegetation within the previously disturbed area. Disturbing revegetated areas for production or workover operations will be allowed. If there is significant disturbance and loss of vegetation, the area will need to be revegetated. Communicate with the appropriate BLM office for any exceptions/exemptions if needed.

All disturbed areas after they have been satisfactorily prepared need to be reseeded with the seed mixture provided below.

Upon completion of interim reclamation, the operator shall submit a Sundry Notices and Reports on Wells, Subsequent Report of Reclamation (Form 3160-5).

VIII. FINAL ABANDONMENT & RECLAMATION

At final abandonment, well locations, production facilities, and access roads must undergo "final" reclamation so that the character and productivity of the land are restored.

Earthwork for final reclamation must be completed within six (6) months of well plugging. All pads, pits, facility locations and roads must be reclaimed to a satisfactory revegetated, safe, and stable condition, unless an agreement is made with the landowner or BLM to keep the road and/or pad intact.

After all disturbed areas have been satisfactorily prepared, these areas need to be revegetated with the seed mixture provided below. Seeding should be accomplished by drilling on the contour whenever practical or by other approved methods. Seeding may need to be repeated until revegetation is successful, as determined by the BLM.

Operators shall contact a BLM surface protection specialist prior to surface abandonment operations for site specific objectives (Jim Amos: 575-234-5909).

Ground-level Abandoned Well Marker to avoid raptor perching: Upon the plugging and subsequent abandonment of the well, the well marker will be installed at ground level on a plate containing the pertinent information for the plugged well.

Seed Mixture 2, for Sandy Sites

The holder shall seed all disturbed areas with the seed mixture listed below. The seed mixture shall be planted in the amounts specified in pounds of pure live seed (PLS)* per acre. There

shall be no primary or secondary noxious weeds in the seed mixture. Seed will be tested and the viability testing of seed will be done in accordance with State law (s) and within nine (9) months prior to purchase. Commercial seed will be either certified or registered seed. The seed container will be tagged in accordance with State law(s) and available for inspection by the authorized officer.

Seed will be planted using a drill equipped with a depth regulator to ensure proper depth of planting where drilling is possible. The seed mixture will be evenly and uniformly planted over the disturbed area (smaller/heavier seeds have a tendency to drop the bottom of the drill and are planted first). The holder shall take appropriate measures to ensure this does not occur. Where drilling is not possible, seed will be broadcast and the area shall be raked or chained to cover the seed. When broadcasting the seed, the pounds per acre are to be doubled. The seeding will be repeated until a satisfactory stand is established as determined by the authorized officer. Evaluation of growth will not be made before completion of at least one full growing season after seeding.

Species to be planted in pounds of pure live seed* per acre:

Species

	<u>lb/acre</u>
Sand dropseed (<i>Sporobolus cryptandrus</i>)	1.0
Sand love grass (<i>Eragrostis trichodes</i>)	1.0
Plains bristlegrass (<i>Setaria macrostachya</i>)	2.0

*Pounds of pure live seed:

Pounds of seed x percent purity x percent germination = pounds pure live seed

Red Hills Unit #21H

Cimarex Energy Co. of Colorado

UL: A, Sec. 33, 25S, 33E

Lea Co., NM

- 1 All Company and Contract personnel admitted on location must be trained by a qualified H₂S safety instructor to the following:
 - A. Characteristics of H₂S
 - B. Physical effects and hazards
 - C. Principal and operation of H₂S detectors, warning system and briefing areas.
 - D. Evacuation procedure, routes and first aid.
 - E. Proper use of safety equipment & life support systems
 - F. Essential personnel meeting Medical Evaluation criteria will receive additional training on the proper use of 30 minute pressure demand air packs.

H₂S Detection and Alarm Systems:

 - A. H₂S sensors/detectors to be located on the drilling rig floor, in the base of the sub structure/cellar area, on the mud pits in the shale shaker area. Additional H₂S detectors may be placed as deemed necessary.
 - B. An audio alarm system will be installed on the derrick floor and in the top doghouse.
- 3 Windsock and/or wind streamers:
 - A. Windsock at mudpit area should be high enough to be visible.
 - B. Windsock on the rig floor and / or top doghouse should be high enough to be visible.
- 4 Condition Flags and Signs
 - A. Warning sign on access road to location.
 - B. Flags to be displayed on sign at entrance to location. Green flag indicates normal safe condition. Yellow flag indicates potential pressure and danger. Red flag indicates danger (H₂S present in dangerous concentration). Only H₂S trained and certified personnel admitted to location.
- 5 Well control equipment:
 - A. See exhibit "E-1"
- 6 Communication:
 - A. While working under masks chalkboards will be used for communication.
 - B. Hand signals will be used where chalk board is inappropriate.
 - C. Two way radio will be used to communicate off location in case of emergency help is required. In most cases cellular telephones will be available at most drilling foreman's trailer or living quarters.
- 7 Drillstem Testing:

No DSTs or cores are planned at this time.
- 8 Drilling contractor supervisor will be required to be familiar with the effects H₂S has on tubular goods and other mechanical equipment.
- 9 If H₂S is encountered, mud system will be altered if necessary to maintain control of formation. A mud gas separator will be brought into service along with H₂S scavengers if necessary.

H₂S Contingency Plan
Red Hills Unit #21H
Cimarex Energy Co. of Colorado
UL: A, Sec. 33, 25S, 33E
Lea Co., NM

Emergency Procedures

In the event of a release of gas containing H₂S, the first responder(s) must:

- « Isolate the area and prevent entry by other persons into the 100 ppm ROE.
- « Evacuate any public places encompassed by the 100 ppm ROE.
- « Be equipped with H₂S monitors and air packs in order to control the release.
- « Use the "buddy system" to ensure no injuries occur during the 432-620-1975
- « Take precautions to avoid personal injury during this operation.
- « Contact operator and/or local officials to aid in operation. See list of phone numbers attached.
- « Have received training in the:
 - Detection of H₂S, and
 - Measures for protection against the gas,
 - Equipment used for protection and emergency response.

Ignition of Gas Source

Should control of the well be considered lost and ignition considered, take care to protect against exposure to Sulfur Dioxide (SO₂). Intentional ignition must be coordinated with the NMOCD and local officials. Additionally, the NM State Police may become involved. NM State Police shall be the Incident Command on scene of any major release. Take care to protect downwind whenever there is an ignition of the gas.

Characteristics of H₂S and SO₂

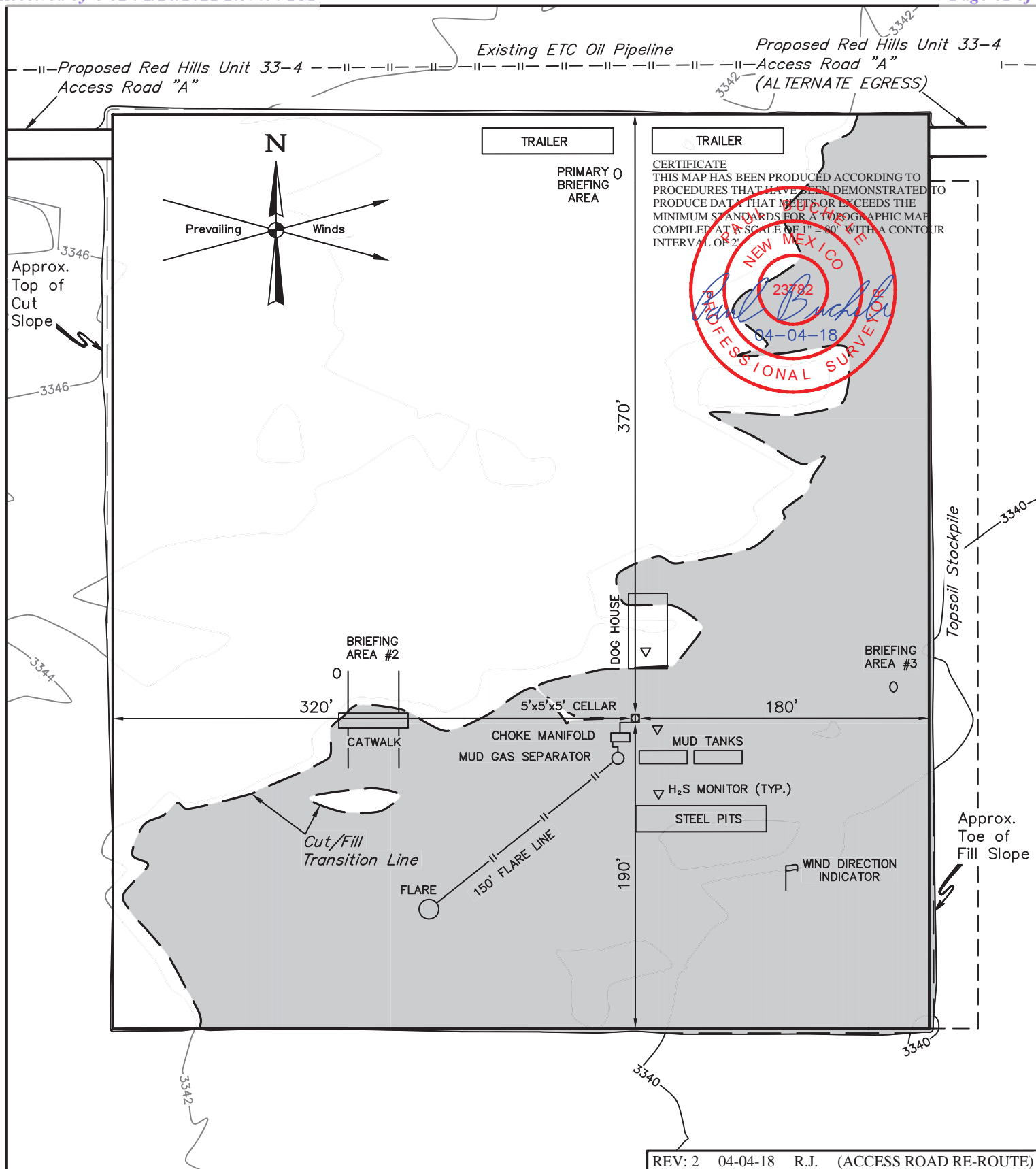
Please see attached International Chemical Safety Cards.

Contacting Authorities

Cimarex Energy Co. of Colorado's personnel must liaise with local and state agencies to ensure a proper response to a major release. Additionally, the OCD must be notified of the release as soon as possible but no later than 4 hours. Agencies will ask for information such as type and volume of release, wind direction, location of release, etc. Be prepared with all information available including directions to site. The following call list of essential and potential responders has been prepared for use during a release. Cimarex Energy Co. of Colorado's response must be in coordination with the State of New Mexico's "Hazardous Materials Emergency Response Plan" (HMER).

H₂S Contingency Plan Emergency Contacts
 Red Hills Unit #21H
Cimarex Energy Co. of Colorado
 UL: A, Sec. 33, 25S, 33E
 Lea Co., NM

<u>Company Office</u>			
Cimarex Energy Co. of Colorado		800-969-4789	
Co. Office and After-Hours Menu			
<u>Key Personnel</u>			
Name	Title	Office	Mobile
Larry Seigrist	Drilling Manager	432-620-1934	580-243-8485
Charlie Pritchard	Drilling Superintendent	432-620-1975	432-238-7084
Roy Shirley	Construction Superintendent		432-634-2136
<u>Artesia</u>			
Ambulance		911	
State Police		575-746-2703	
City Police		575-746-2703	
Sheriff's Office		575-746-9888	
Fire Department		575-746-2701	
Local Emergency Planning Committee		575-746-2122	
New Mexico Oil Conservation Division		575-748-1283	
<u>Carlsbad</u>			
Ambulance		911	
State Police		575-885-3137	
City Police		575-885-2111	
Sheriff's Office		575-887-7551	
Fire Department		575-887-3798	
Local Emergency Planning Committee		575-887-6544	
US Bureau of Land Management		575-887-6544	
<u>Santa Fe</u>			
New Mexico Emergency Response Commission (Santa Fe)		505-476-9600	
New Mexico Emergency Response Commission (Santa Fe) 24 Hrs		505-827-9126	
New Mexico State Emergency Operations Center		505-476-9635	
<u>National</u>			
National Emergency Response Center (Washington, D.C.)		800-424-8802	
<u>Medical</u>			
Flight for Life - 4000 24th St.; Lubbock, TX		806-743-9911	
Aerocare - R3, Box 49F; Lubbock, TX		806-747-8923	
Med Flight Air Amb - 2301 Yale Blvd S.E., #D3; Albuquerque, NM		505-842-4433	
SB Air Med Service - 2505 Clark Carr Loop S.E.; Albuquerque, NM		505-842-4949	
<u>Other</u>			
Boots & Coots IWC	800-256-9688	or	281-931-8884
Cudd Pressure Control	432-699-0139	or	432-563-3356
Halliburton	575-746-2757		
B.J. Services	575-746-3569		



REV: 2 04-04-18 R.J. (ACCESS ROAD RE-ROUTE)

NOTES:

- Contours shown at 2' intervals.

CIMAREX ENERGY CO.

RED HILLS UNIT 21H
448' FNL 850' FEL
NE 1/4 NE 1/4, SECTION 33, T25S, R33E, N.M.P.M.
LEA COUNTY, NEW MEXICO

SURVEYED BY	C.J., A.H.	05-05-17	SCALE
DRAWN BY	S.F.	06-07-17	1" = 80'
Typical Rig Layout and Closed Loop Diagram			



UELS, LLC
 Corporate Office * 85 South 200 East
 Vernal, UT 84078 * (435) 789-1017

District I

1625 N. French Dr., Hobbs, NM 88240
Phone:(575) 393-6161 Fax:(575) 393-0720

District II

811 S. First St., Artesia, NM 88210
Phone:(575) 748-1283 Fax:(575) 748-9720

District III

1000 Rio Brazos Rd., Aztec, NM 87410
Phone:(505) 334-6178 Fax:(505) 334-6170

District IV

1220 S. St Francis Dr., Santa Fe, NM 87505
Phone:(505) 476-3470 Fax:(505) 476-3462

State of New Mexico
Energy, Minerals and Natural Resources
Oil Conservation Division
1220 S. St Francis Dr.
Santa Fe, NM 87505

CONDITIONS

Action 15693

CONDITIONS OF APPROVAL

Operator:	CIMAREX ENERGY CO. OF COLORADO	600 N. Marienfeld Street	OGRID:	162683	Action Number:	15693	Action Type:	FORM 3160-3
	Suite 600	Midland, TX79701						

OCD Reviewer	Condition
pkautz	Will require a File As Drilled C-102 and a Directional Survey with the C-104
pkautz	Once the well is spud, to prevent ground water contamination through whole or partial conduits from the surface, the operator shall drill without interruption through the fresh water zone or zones and shall immediately set in cement the water protection string