

<b>Well Name:</b> POKER LAKE UNIT 28 BS	<b>Well Location:</b> T25S / R31E / SEC 28 / SENE / 32.102202 / -103.776667	<b>County or Parish/State:</b> EDDY / NM
<b>Well Number:</b> 127H	<b>Type of Well:</b> CONVENTIONAL GAS WELL	<b>Allottee or Tribe Name:</b>
<b>Lease Number:</b> NMLC0063136A, NMLC062140	<b>Unit or CA Name:</b> POKER LAKE	<b>Unit or CA Number:</b> NMNM071016X, NMNM71016X
<b>US Well Number:</b> 3001545539	<b>Well Status:</b> Approved Application for Permit to Drill	<b>Operator:</b> BOPCO LP

### Subsequent Report

**Type of Submission:** Subsequent Report**Type of Action:** Drilling Operations**Date Sundry Submitted:** 01/22/2021**Time Sundry Submitted:** 02:08**Date Operation Actually Began:** 04/22/2020

**Actual Procedure:** KOP @ 11,600 ft. PBTD = 25,208 ft. 4/22/20 Run RCB/GR/CCL 4/25/20 Pressure test 5.5 in csg to 1060 psi for 20 min test good., 9/11/20 to 12/7/20: Perf and frac 70 stages, 1,896 total shots, from 12,506 to 25,071, using 676,119 bbls of fluid and 30,551,714 lbs Proppant. Tag and drill out plugs. 1/1/21 Set 2-7/8 L80 tbg, set at 11,536 ft. 12/27/20 Packer setting depth 11,460 ft. Ready Date: 01/16/2021 First Production: 01/17/2021

### Operator Certification

*I certify that the foregoing is true and correct. Title 18 U.S.C. Section 1001 and Title 43 U.S.C. Section 1212, make it a crime for any person knowingly and willfully to make to any department or agency of the United States any false, fictitious or fraudulent statements or representations as to any matter within its jurisdiction. Electronic submission of Sundry Notices through this system satisfies regulations requiring a submission of Form 3160-5 or a Sundry Notice.*

**Operator Electronic Signature:** RABADUE**Signed on:** JAN 22, 2021 02:08 PM**Name:** BOPCO LP**Title:** Regulatory Coordinator**Street Address:** 6401 HOLIDAY HILL RD BLDG 5 SUITE 200**City:** MIDLAND**State:** TX**Phone:** (432) 683-2277**Email address:**

### Field Representative

**Representative Name:****Street Address:****City:****State:****Zip:****Phone:****Email address:**

Well Name: POKER LAKE UNIT 28 BS	<b>Well Location:</b> T25S / R31E / SEC 28 / SENE / 32.102202 / -103.776667	<b>County or Parish/State:</b> EDDY / NM
<b>Well Number:</b> 127H	<b>Type of Well:</b> CONVENTIONAL GAS WELL	<b>Allottee or Tribe Name:</b>
<b>Lease Number:</b> NMLC0063136A, NMLC062140	<b>Unit or CA Name:</b> POKER LAKE	<b>Unit or CA Number:</b> NMNM071016X, NMNM71016X
<b>US Well Number:</b> 3001545539	<b>Well Status:</b> Approved Application for Permit to Drill	<b>Operator:</b> BOPCO LP

**BLM Point of Contact****BLM POC Name:** Jonathon W Shepard**BLM POC Title:** Petroleum Engineer**BLM POC Phone:** 5752345972**BLM POC Email Address:** jshepard@blm.gov**Disposition:** Accepted**Disposition Date:** 01/29/2021**Signature:** Jonathon Shepard



## Survey Certification

April 29, 2020

State of New Mexico  
County of Eddy

I, Jack Simmons, certify that; I am employed by Geoguidance Drilling Services; that I did on the day(s) of January 24, 2020 through March 02, 2020 conduct or supervise the taking of a directional MWD survey from a depth of 227 feet to a depth of 25173 feet; that the data is true, correct, complete and within the limitations of the tool as set forth by Geoguidance Drilling Services; that I am authorized and qualified to make this report; that this survey was conducted at the request of XTO Energy Inc. for Poker Lake Unit 28 BS #127H API No. 30-015-45539 in Eddy County, New Mexico; and that I have reviewed this report and find that it conforms to the principles and procedures as set forth by Geoguidance Drilling Services.

Jack Simmons

Survey Instrument Type  
MWD

---

Jack Simmons  
MWD Manager  
Drilling Services

*"Professionals in Wellbore Navigation"*



## **XTO ENERGY INC.**

**EDDY COUNTY, NM  
POKER LAKE UNIT 28 BS  
PLU 28 BS 127H  
PLU 28 BS 127H**

**Design: PLU 28 BS 127H**

## **FINAL SURVEY REPORT**

**10 March, 2020**





# GeoGuidance Drilling FINAL SURVEY REPORT



<b>Company:</b>	XTO ENERGY INC.	<b>Local Co-ordinate Reference:</b>	Well PLU 28 BS 127H
<b>Project:</b>	EDDY COUNTY, NM	<b>TVD Reference:</b>	PLU 28 BS 127H @ 3370.00usft (N F15 - 32' KB)
<b>Site:</b>	POKER LAKE UNIT 28 BS	<b>MD Reference:</b>	PLU 28 BS 127H @ 3370.00usft (N F15 - 32' KB)
<b>Well:</b>	PLU 28 BS 127H	<b>North Reference:</b>	Grid
<b>Wellbore:</b>	PLU 28 BS 127H	<b>Survey Calculation Method:</b>	Minimum Curvature
<b>Design:</b>	PLU 28 BS 127H	<b>Database:</b>	TEXAS

<b>Project</b>	EDDY COUNTY, NM		
<b>Map System:</b>	US State Plane 1927 (Exact solution)	<b>System Datum:</b>	Mean Sea Level
<b>Geo Datum:</b>	NAD 1927 (NADCON CONUS)		
<b>Map Zone:</b>	New Mexico East 3001		

<b>Site</b>	POKER LAKE UNIT 28 BS		
<b>Site Position:</b>		<b>Northing:</b>	390,000.00 usft
<b>From:</b>	Map	<b>Easting:</b>	672,000.00 usft
<b>Position Uncertainty:</b>	0.00 usft	<b>Slot Radius:</b>	13-3/16 "
		<b>Latitude:</b>	32.071009
		<b>Longitude:</b>	-103.778061
		<b>Grid Convergence:</b>	0.29 °

Well	PLU 28 BS 127H, SUR. N 401304.6 E 672521.2					
Well Position	+N/-S	0.00 usft	Northing:	401,304.60 usft	Latitude:	32.102077
	+E/-W	0.00 usft	Easting:	672,521.20 usft	Longitude:	-103.776190
Position Uncertainty		0.00 usft	Wellhead Elevation:	usft	Ground Level:	3,338.00 usft

<b>Wellbore</b>	PLU 28 BS 127H				
<b>Magnetics</b>	<b>Model Name</b>	<b>Sample Date</b>	<b>Declination (°)</b>	<b>Dip Angle (°)</b>	<b>Field Strength (nT)</b>
	IGRF2020	1/20/2020	6.80	59.80	47,547

<b>Design</b>	PLU 28 BS 127H				
<b>Audit Notes:</b>					
<b>Version:</b>	1.0	<b>Phase:</b>	ACTUAL	<b>Tie On Depth:</b>	0.00
<b>Vertical Section:</b>	<b>Depth From (TVD) (usft)</b>	<b>+N/-S (usft)</b>	<b>+E/-W (usft)</b>	<b>Direction (°)</b>	
	0.00	0.00	0.00	179.61	



# GeoGuidance Drilling FINAL SURVEY REPORT



<b>Company:</b>	XTO ENERGY INC.	<b>Local Co-ordinate Reference:</b>	Well PLU 28 BS 127H
<b>Project:</b>	EDDY COUNTY, NM	<b>TVD Reference:</b>	PLU 28 BS 127H @ 3370.00usft (N F15 - 32' KB)
<b>Site:</b>	POKER LAKE UNIT 28 BS	<b>MD Reference:</b>	PLU 28 BS 127H @ 3370.00usft (N F15 - 32' KB)
<b>Well:</b>	PLU 28 BS 127H	<b>North Reference:</b>	Grid
<b>Wellbore:</b>	PLU 28 BS 127H	<b>Survey Calculation Method:</b>	Minimum Curvature
<b>Design:</b>	PLU 28 BS 127H	<b>Database:</b>	TEXAS

Survey Program		Date	3/10/2020		
From (usft)	To (usft)	Survey (Wellbore)	Tool Name	Description	
227.00	10,843.00	GGDS SUR/INT SURVEYS (PLU 28 BS 1	MWD+IGRF	OWSG MWD + IGRF or WMM	
10,941.00	25,253.00	GGDS CURVE/LAT. (PLU 28 BS 127H)	MWD+IGRF+MS	OWSG MWD + IGRF or WMM + Multi-Station Correctic	

Survey										
MD (usft)	Inc (°)	Azi (azimuth) (°)	TVD (usft)	TVDSS (usft)	N/S (usft)	E/W (usft)	Northing (usft)	Easting (usft)	DLeg (°/100usft)	V. Sec (usft)
0.00	0.00	0.00	0.00	3,370.00	0.00	0.00	401,304.60	672,521.20	0.00	0.00
227.00	0.22	89.12	227.00	3,143.00	0.01	0.44	401,304.61	672,521.64	0.10	0.00
318.00	0.70	14.06	318.00	3,052.00	0.55	0.75	401,305.15	672,521.95	0.74	-0.54
409.00	1.27	357.01	408.98	2,961.02	2.09	0.83	401,306.69	672,522.03	0.70	-2.09
502.00	1.67	358.06	501.95	2,868.05	4.48	0.73	401,309.08	672,521.93	0.43	-4.47
593.00	1.63	358.59	592.91	2,777.09	7.10	0.65	401,311.70	672,521.85	0.05	-7.09
685.00	1.36	4.30	684.88	2,685.12	9.49	0.70	401,314.09	672,521.90	0.33	-9.49
777.00	1.36	334.07	776.86	2,593.14	11.56	0.31	401,316.16	672,521.51	0.77	-11.56
868.00	0.75	336.09	867.84	2,502.16	13.08	-0.41	401,317.68	672,520.79	0.67	-13.08
960.00	0.26	320.36	959.84	2,410.16	13.79	-0.79	401,318.39	672,520.41	0.55	-13.80
1,053.00	0.13	344.88	1,052.84	2,317.16	14.06	-0.95	401,318.66	672,520.25	0.16	-14.06
1,246.00	0.28	234.08	1,245.84	2,124.16	13.99	-1.39	401,318.59	672,519.81	0.18	-14.00
1,340.00	0.32	271.44	1,339.84	2,030.16	13.86	-1.83	401,318.46	672,519.37	0.21	-13.87
1,433.00	0.26	277.63	1,432.84	1,937.16	13.90	-2.30	401,318.50	672,518.90	0.07	-13.91
1,528.00	0.43	225.06	1,527.83	1,842.17	13.67	-2.77	401,318.27	672,518.43	0.36	-13.69
1,622.00	0.22	156.36	1,621.83	1,748.17	13.26	-2.95	401,317.86	672,518.25	0.43	-13.28
1,717.00	0.24	216.37	1,716.83	1,653.17	12.93	-2.99	401,317.53	672,518.21	0.24	-12.95
1,811.00	0.55	198.20	1,810.83	1,559.17	12.35	-3.25	401,316.95	672,517.95	0.35	-12.37
1,906.00	0.27	199.99	1,905.83	1,464.17	11.70	-3.47	401,316.30	672,517.73	0.30	-11.73
1,999.00	0.58	210.95	1,998.82	1,371.18	11.09	-3.79	401,315.69	672,517.41	0.34	-11.12
2,092.00	0.65	217.40	2,091.82	1,278.18	10.27	-4.35	401,314.87	672,516.85	0.11	-10.30



# GeoGuidance Drilling FINAL SURVEY REPORT



<b>Company:</b>	XTO ENERGY INC.	<b>Local Co-ordinate Reference:</b>	Well PLU 28 BS 127H
<b>Project:</b>	EDDY COUNTY, NM	<b>TVD Reference:</b>	PLU 28 BS 127H @ 3370.00usft (N F15 - 32' KB)
<b>Site:</b>	POKER LAKE UNIT 28 BS	<b>MD Reference:</b>	PLU 28 BS 127H @ 3370.00usft (N F15 - 32' KB)
<b>Well:</b>	PLU 28 BS 127H	<b>North Reference:</b>	Grid
<b>Wellbore:</b>	PLU 28 BS 127H	<b>Survey Calculation Method:</b>	Minimum Curvature
<b>Design:</b>	PLU 28 BS 127H	<b>Database:</b>	TEXAS

Survey										
MD (usft)	Inc (°)	Azi (azimuth) (°)	TVD (usft)	TVDSS (usft)	N/S (usft)	E/W (usft)	Northing (usft)	Easting (usft)	DLeg (°/100usft)	V. Sec (usft)
2,186.00	0.77	206.70	2,185.81	1,184.19	9.28	-4.96	401,313.88	672,516.24	0.19	-9.32
2,280.00	1.08	209.63	2,279.80	1,090.20	7.95	-5.68	401,312.55	672,515.52	0.33	-7.99
2,374.00	1.11	211.93	2,373.78	996.22	6.40	-6.60	401,311.00	672,514.60	0.06	-6.45
2,468.00	0.97	252.05	2,467.77	902.23	5.39	-7.84	401,309.99	672,513.36	0.77	-5.44
2,561.00	0.76	320.44	2,560.76	809.24	5.62	-8.98	401,310.22	672,512.22	1.06	-5.68
2,655.00	1.78	355.18	2,654.74	715.26	7.55	-9.50	401,312.15	672,511.70	1.31	-7.62
2,750.00	3.72	8.08	2,749.62	620.38	12.08	-9.19	401,316.68	672,512.01	2.13	-12.14
2,844.00	5.04	12.57	2,843.35	526.65	19.13	-7.86	401,323.73	672,513.34	1.45	-19.18
2,939.00	4.76	9.78	2,938.00	432.00	27.08	-6.28	401,331.68	672,514.92	0.39	-27.13
3,034.00	4.49	4.50	3,032.69	337.31	34.68	-5.32	401,339.28	672,515.88	0.53	-34.71
3,127.00	4.39	353.97	3,125.41	244.59	41.84	-5.41	401,346.44	672,515.79	0.88	-41.88
3,221.00	4.52	344.18	3,219.13	150.87	48.99	-6.80	401,353.59	672,514.40	0.82	-49.03
3,315.00	4.71	341.51	3,312.83	57.17	56.21	-9.03	401,360.81	672,512.17	0.31	-56.27
3,409.00	4.59	340.80	3,406.52	-36.52	63.42	-11.49	401,368.02	672,509.71	0.14	-63.50
3,503.00	4.49	337.42	3,500.22	-130.22	70.37	-14.14	401,374.97	672,507.06	0.30	-70.47
3,597.00	4.51	341.03	3,593.93	-223.93	77.26	-16.76	401,381.86	672,504.44	0.30	-77.38
3,691.00	4.31	345.35	3,687.65	-317.65	84.18	-18.85	401,388.78	672,502.35	0.41	-84.30
3,785.00	3.88	344.73	3,781.41	-411.41	90.66	-20.58	401,395.26	672,500.62	0.46	-90.80
3,878.00	2.68	348.14	3,874.26	-504.26	95.82	-21.86	401,400.42	672,499.34	1.31	-95.97
3,972.00	1.19	336.06	3,968.20	-598.20	98.87	-22.70	401,403.47	672,498.50	1.63	-99.02
4,063.00	0.95	10.27	4,059.19	-689.19	100.47	-22.95	401,405.07	672,498.25	0.74	-100.63
4,158.00	1.68	17.31	4,154.16	-784.16	102.58	-22.40	401,407.18	672,498.80	0.79	-102.73
4,252.00	2.27	4.10	4,248.11	-878.11	105.75	-21.86	401,410.35	672,499.34	0.79	-105.90
4,346.00	2.40	8.93	4,342.03	-972.03	109.55	-21.42	401,414.15	672,499.78	0.25	-109.69
4,440.00	3.19	14.65	4,435.92	-1,065.92	114.03	-20.45	401,418.63	672,500.75	0.89	-114.16
4,533.00	4.04	9.08	4,528.73	-1,158.73	119.76	-19.28	401,424.36	672,501.92	0.99	-119.89
4,627.00	4.21	7.06	4,622.49	-1,252.49	126.46	-18.33	401,431.06	672,502.87	0.24	-126.58



# GeoGuidance Drilling FINAL SURVEY REPORT



<b>Company:</b>	XTO ENERGY INC.	<b>Local Co-ordinate Reference:</b>	Well PLU 28 BS 127H
<b>Project:</b>	EDDY COUNTY, NM	<b>TVD Reference:</b>	PLU 28 BS 127H @ 3370.00usft (N F15 - 32' KB)
<b>Site:</b>	POKER LAKE UNIT 28 BS	<b>MD Reference:</b>	PLU 28 BS 127H @ 3370.00usft (N F15 - 32' KB)
<b>Well:</b>	PLU 28 BS 127H	<b>North Reference:</b>	Grid
<b>Wellbore:</b>	PLU 28 BS 127H	<b>Survey Calculation Method:</b>	Minimum Curvature
<b>Design:</b>	PLU 28 BS 127H	<b>Database:</b>	TEXAS

Survey										
MD (usft)	Inc (°)	Azi (azimuth) (°)	TVD (usft)	TVDSS (usft)	N/S (usft)	E/W (usft)	Northing (usft)	Easting (usft)	DLeg (°/100usft)	V. Sec (usft)
4,721.00	4.13	13.33	4,716.24	-1,346.24	133.18	-17.13	401,437.78	672,504.07	0.49	-133.29
4,816.00	4.41	11.12	4,810.98	-1,440.98	140.09	-15.63	401,444.69	672,505.57	0.34	-140.19
4,910.00	4.31	7.97	4,904.70	-1,534.70	147.13	-14.45	401,451.73	672,506.75	0.28	-147.23
5,004.00	4.12	5.82	4,998.45	-1,628.45	153.99	-13.62	401,458.59	672,507.58	0.26	-154.08
5,098.00	3.99	2.56	5,092.21	-1,722.21	160.62	-13.13	401,465.22	672,508.07	0.28	-160.70
5,192.00	3.77	2.82	5,186.00	-1,816.00	166.97	-12.83	401,471.57	672,508.37	0.23	-167.05
5,287.00	3.39	1.76	5,280.81	-1,910.81	172.90	-12.59	401,477.50	672,508.61	0.41	-172.98
5,381.00	3.19	0.62	5,374.66	-2,004.66	178.29	-12.48	401,482.89	672,508.72	0.22	-178.37
5,475.00	3.33	2.97	5,468.51	-2,098.51	183.63	-12.31	401,488.23	672,508.89	0.21	-183.71
5,569.00	3.21	0.71	5,562.35	-2,192.35	188.99	-12.13	401,493.59	672,509.07	0.19	-189.07
5,663.00	3.02	359.32	5,656.21	-2,286.21	194.10	-12.13	401,498.70	672,509.07	0.22	-194.18
5,757.00	3.01	356.26	5,750.08	-2,380.08	199.04	-12.32	401,503.64	672,508.88	0.17	-199.12
5,851.00	2.82	354.39	5,843.96	-2,473.96	203.80	-12.71	401,508.40	672,508.49	0.23	-203.88
5,944.00	2.64	349.01	5,936.86	-2,566.86	208.18	-13.34	401,512.78	672,507.86	0.34	-208.27
6,038.00	2.42	341.12	6,030.77	-2,660.77	212.18	-14.39	401,516.78	672,506.81	0.44	-212.28
6,132.00	2.15	340.66	6,124.69	-2,754.69	215.72	-15.62	401,520.32	672,505.58	0.29	-215.83
6,226.00	1.89	335.57	6,218.63	-2,848.63	218.80	-16.84	401,523.40	672,504.36	0.34	-218.91
6,318.00	1.64	336.46	6,310.59	-2,940.59	221.39	-18.00	401,525.99	672,503.20	0.27	-221.51
6,412.00	1.45	337.85	6,404.55	-3,034.55	223.72	-18.98	401,528.32	672,502.22	0.21	-223.85
6,506.00	1.42	334.03	6,498.53	-3,128.53	225.87	-19.94	401,530.47	672,501.26	0.11	-226.00
6,599.00	1.25	315.17	6,591.50	-3,221.50	227.63	-21.16	401,532.23	672,500.04	0.50	-227.77
6,694.00	1.34	314.43	6,686.48	-3,316.48	229.14	-22.68	401,533.74	672,498.52	0.10	-229.29
6,787.00	0.95	296.35	6,779.46	-3,409.46	230.24	-24.15	401,534.84	672,497.05	0.57	-230.40
6,881.00	0.99	277.19	6,873.44	-3,503.44	230.69	-25.66	401,535.29	672,495.54	0.35	-230.86
6,975.00	0.81	261.31	6,967.43	-3,597.43	230.69	-27.12	401,535.29	672,494.08	0.33	-230.87
7,068.00	0.91	243.04	7,060.42	-3,690.42	230.26	-28.43	401,534.86	672,492.77	0.31	-230.45
7,163.00	0.64	245.53	7,155.41	-3,785.41	229.70	-29.58	401,534.30	672,491.62	0.29	-229.89





# GeoGuidance Drilling FINAL SURVEY REPORT



<b>Company:</b>	XTO ENERGY INC.	<b>Local Co-ordinate Reference:</b>	Well PLU 28 BS 127H
<b>Project:</b>	EDDY COUNTY, NM	<b>TVD Reference:</b>	PLU 28 BS 127H @ 3370.00usft (N F15 - 32' KB)
<b>Site:</b>	POKER LAKE UNIT 28 BS	<b>MD Reference:</b>	PLU 28 BS 127H @ 3370.00usft (N F15 - 32' KB)
<b>Well:</b>	PLU 28 BS 127H	<b>North Reference:</b>	Grid
<b>Wellbore:</b>	PLU 28 BS 127H	<b>Survey Calculation Method:</b>	Minimum Curvature
<b>Design:</b>	PLU 28 BS 127H	<b>Database:</b>	TEXAS

Survey										
MD (usft)	Inc (°)	Azi (azimuth) (°)	TVD (usft)	TVDSS (usft)	N/S (usft)	E/W (usft)	Northing (usft)	Easting (usft)	DLeg (°/100usft)	V. Sec (usft)
7,257.00	0.97	226.14	7,249.40	-3,879.40	228.93	-30.63	401,533.53	672,490.57	0.45	-229.13
7,350.00	0.86	247.18	7,342.39	-3,972.39	228.11	-31.84	401,532.71	672,489.36	0.38	-228.32
7,444.00	1.11	229.95	7,436.38	-4,066.38	227.25	-33.19	401,531.85	672,488.01	0.41	-227.47
7,538.00	0.91	235.49	7,530.36	-4,160.36	226.24	-34.50	401,530.84	672,486.70	0.24	-226.47
7,632.00	0.91	231.61	7,624.35	-4,254.35	225.36	-35.70	401,529.96	672,485.50	0.07	-225.59
7,726.00	0.87	224.36	7,718.34	-4,348.34	224.38	-36.79	401,528.98	672,484.41	0.13	-224.63
7,822.00	0.81	232.43	7,814.33	-4,444.33	223.45	-37.83	401,528.05	672,483.37	0.14	-223.70
7,915.00	0.77	242.03	7,907.32	-4,537.32	222.75	-38.91	401,527.35	672,482.29	0.15	-223.01
8,010.00	1.12	251.78	8,002.31	-4,632.31	222.16	-40.35	401,526.76	672,480.85	0.40	-222.43
8,103.00	1.35	242.01	8,095.29	-4,725.29	221.37	-42.18	401,525.97	672,479.02	0.33	-221.65
8,196.00	1.42	250.24	8,188.26	-4,818.26	220.46	-44.24	401,525.06	672,476.96	0.23	-220.76
8,291.00	1.70	255.23	8,283.23	-4,913.23	219.70	-46.71	401,524.30	672,474.49	0.33	-220.02
8,385.00	1.70	258.08	8,377.18	-5,007.18	219.06	-49.42	401,523.66	672,471.78	0.09	-219.39
8,479.00	1.35	272.95	8,471.15	-5,101.15	218.83	-51.89	401,523.43	672,469.31	0.56	-219.18
8,572.00	0.54	313.62	8,564.14	-5,194.14	219.19	-53.30	401,523.79	672,467.90	1.08	-219.55
8,667.00	0.36	60.81	8,659.14	-5,289.14	219.64	-53.36	401,524.24	672,467.84	0.77	-220.00
8,761.00	0.87	68.13	8,753.13	-5,383.13	220.05	-52.44	401,524.65	672,468.76	0.55	-220.40
8,855.00	1.07	61.09	8,847.12	-5,477.12	220.74	-51.01	401,525.34	672,470.19	0.25	-221.09
8,949.00	1.03	40.51	8,941.10	-5,571.10	221.81	-49.70	401,526.41	672,471.50	0.40	-222.14
9,042.00	0.80	5.69	9,034.09	-5,664.09	223.09	-49.09	401,527.69	672,472.11	0.63	-223.42
9,136.00	0.72	311.39	9,128.08	-5,758.08	224.13	-49.47	401,528.73	672,471.73	0.74	-224.47
9,230.00	0.69	271.00	9,222.08	-5,852.08	224.54	-50.48	401,529.14	672,470.72	0.52	-224.87
9,324.00	0.51	243.20	9,316.07	-5,946.07	224.36	-51.42	401,528.96	672,469.78	0.36	-224.70
9,418.00	0.63	236.92	9,410.07	-6,040.07	223.89	-52.22	401,528.49	672,468.98	0.14	-224.24
9,512.00	0.60	227.01	9,504.06	-6,134.06	223.27	-53.01	401,527.87	672,468.19	0.12	-223.62
9,606.00	0.97	223.88	9,598.05	-6,228.05	222.36	-53.93	401,526.96	672,467.27	0.40	-222.72
9,699.00	1.53	218.57	9,691.03	-6,321.03	220.82	-55.25	401,525.42	672,465.95	0.61	-221.19



# GeoGuidance Drilling FINAL SURVEY REPORT



<b>Company:</b>	XTO ENERGY INC.	<b>Local Co-ordinate Reference:</b>	Well PLU 28 BS 127H
<b>Project:</b>	EDDY COUNTY, NM	<b>TVD Reference:</b>	PLU 28 BS 127H @ 3370.00usft (N F15 - 32' KB)
<b>Site:</b>	POKER LAKE UNIT 28 BS	<b>MD Reference:</b>	PLU 28 BS 127H @ 3370.00usft (N F15 - 32' KB)
<b>Well:</b>	PLU 28 BS 127H	<b>North Reference:</b>	Grid
<b>Wellbore:</b>	PLU 28 BS 127H	<b>Survey Calculation Method:</b>	Minimum Curvature
<b>Design:</b>	PLU 28 BS 127H	<b>Database:</b>	TEXAS

Survey										
MD (usft)	Inc (°)	Azi (azimuth) (°)	TVD (usft)	TVDSS (usft)	N/S (usft)	E/W (usft)	Northing (usft)	Easting (usft)	DLeg (°/100usft)	V. Sec (usft)
9,793.00	2.17	221.17	9,784.98	-6,414.98	218.50	-57.20	401,523.10	672,464.00	0.69	-218.88
9,888.00	2.72	218.03	9,879.89	-6,509.89	215.37	-59.77	401,519.97	672,461.43	0.60	-215.77
9,981.00	2.61	221.38	9,972.79	-6,602.79	212.04	-62.53	401,516.64	672,458.67	0.20	-212.46
10,076.00	2.13	222.28	10,067.71	-6,697.71	209.11	-65.15	401,513.71	672,456.05	0.51	-209.55
10,159.00	1.69	226.65	10,150.67	-6,780.67	207.13	-67.08	401,511.73	672,454.12	0.56	-207.58
10,253.00	0.72	246.91	10,244.64	-6,874.64	205.95	-68.63	401,510.55	672,452.57	1.11	-206.41
10,347.00	0.58	42.91	10,338.64	-6,968.64	206.07	-68.85	401,510.67	672,452.35	1.35	-206.53
10,441.00	1.26	61.05	10,432.63	-7,062.63	206.92	-67.62	401,511.52	672,453.58	0.78	-207.37
10,535.00	1.31	76.17	10,526.61	-7,156.61	207.67	-65.67	401,512.27	672,455.53	0.36	-208.11
10,629.00	1.03	95.53	10,620.59	-7,250.59	207.85	-63.79	401,512.45	672,457.41	0.51	-208.28
10,724.00	1.00	106.72	10,715.57	-7,345.57	207.53	-62.14	401,512.13	672,459.06	0.21	-207.95
10,818.00	0.58	101.58	10,809.56	-7,439.56	207.20	-60.89	401,511.80	672,460.31	0.45	-207.61
10,843.00	0.46	98.90	10,834.56	-7,464.56	207.15	-60.67	401,511.75	672,460.53	0.49	-207.56
10,941.00	0.33	4.87	10,932.56	-7,562.56	207.38	-60.26	401,511.98	672,460.94	0.60	-207.78
11,004.00	0.42	330.65	10,995.56	-7,625.56	207.76	-60.35	401,512.36	672,460.85	0.38	-208.16
11,097.00	0.54	318.32	11,088.56	-7,718.56	208.38	-60.81	401,512.98	672,460.39	0.17	-208.79
11,191.00	4.42	217.97	11,182.46	-7,812.46	205.86	-63.34	401,510.46	672,457.86	4.84	-206.28
11,238.00	5.93	225.10	11,229.27	-7,859.27	202.71	-66.17	401,507.31	672,455.03	3.49	-203.16
11,286.00	10.12	211.98	11,276.79	-7,906.79	197.38	-70.16	401,501.98	672,451.04	9.47	-197.86
11,333.00	14.38	207.14	11,322.71	-7,952.71	188.68	-75.01	401,493.28	672,446.19	9.32	-189.19
11,380.00	16.22	207.19	11,368.05	-7,998.05	177.65	-80.68	401,482.25	672,440.52	3.91	-178.20
11,427.00	18.65	204.11	11,412.89	-8,042.89	164.95	-86.75	401,469.55	672,434.45	5.53	-165.54
11,474.00	21.23	196.87	11,457.07	-8,087.07	149.94	-92.29	401,454.54	672,428.91	7.59	-150.57
11,521.00	25.26	185.65	11,500.27	-8,130.27	131.80	-95.75	401,436.40	672,425.45	12.71	-132.45
11,568.00	28.90	176.49	11,542.13	-8,172.13	110.47	-96.04	401,415.07	672,425.16	11.76	-111.12
11,615.00	30.96	177.76	11,582.86	-8,212.86	87.05	-94.87	401,391.65	672,426.33	4.59	-87.70
11,662.00	33.64	180.69	11,622.58	-8,252.58	61.95	-94.56	401,366.55	672,426.64	6.60	-62.59



# GeoGuidance Drilling FINAL SURVEY REPORT



<b>Company:</b>	XTO ENERGY INC.	<b>Local Co-ordinate Reference:</b>	Well PLU 28 BS 127H
<b>Project:</b>	EDDY COUNTY, NM	<b>TVD Reference:</b>	PLU 28 BS 127H @ 3370.00usft (N F15 - 32' KB)
<b>Site:</b>	POKER LAKE UNIT 28 BS	<b>MD Reference:</b>	PLU 28 BS 127H @ 3370.00usft (N F15 - 32' KB)
<b>Well:</b>	PLU 28 BS 127H	<b>North Reference:</b>	Grid
<b>Wellbore:</b>	PLU 28 BS 127H	<b>Survey Calculation Method:</b>	Minimum Curvature
<b>Design:</b>	PLU 28 BS 127H	<b>Database:</b>	TEXAS

Survey										
MD (usft)	Inc (°)	Azi (azimuth) (°)	TVD (usft)	TVDSS (usft)	N/S (usft)	E/W (usft)	Northing (usft)	Easting (usft)	DLeg (°/100usft)	V. Sec (usft)
11,709.00	38.42	180.93	11,660.58	-8,290.58	34.31	-94.95	401,338.91	672,426.25	10.17	-34.96
11,756.00	41.67	179.95	11,696.56	-8,326.56	4.08	-95.17	401,308.68	672,426.03	7.04	-4.73
11,803.00	45.76	177.26	11,730.52	-8,360.52	-28.38	-94.35	401,276.22	672,426.85	9.56	27.73
11,850.00	50.13	176.45	11,762.00	-8,392.00	-63.21	-92.43	401,241.39	672,428.77	9.39	62.58
11,897.00	53.19	178.62	11,791.15	-8,421.15	-100.03	-90.86	401,204.57	672,430.34	7.45	99.41
11,943.00	57.33	179.93	11,817.36	-8,447.36	-137.82	-90.39	401,166.78	672,430.81	9.30	137.20
11,990.00	61.30	180.72	11,841.34	-8,471.34	-178.23	-90.63	401,126.37	672,430.57	8.57	177.61
12,037.00	63.23	179.80	11,863.21	-8,493.21	-219.83	-90.82	401,084.77	672,430.38	4.46	219.21
12,084.00	67.67	178.45	11,882.74	-8,512.74	-262.56	-90.15	401,042.04	672,431.05	9.80	261.94
12,131.00	73.36	177.99	11,898.41	-8,528.41	-306.83	-88.77	400,997.77	672,432.43	12.14	306.22
12,178.00	77.96	180.92	11,910.05	-8,540.05	-352.35	-88.35	400,952.25	672,432.85	11.50	351.74
12,225.00	79.37	180.87	11,919.29	-8,549.29	-398.42	-89.07	400,906.18	672,432.13	3.00	397.81
12,272.00	82.97	180.85	11,926.50	-8,556.50	-444.85	-89.77	400,859.75	672,431.43	7.66	444.23
12,320.00	89.01	180.15	11,929.85	-8,559.85	-492.71	-90.19	400,811.89	672,431.01	12.67	492.09
12,414.00	93.07	182.21	11,928.15	-8,558.15	-586.65	-92.12	400,717.95	672,429.08	4.84	586.01
12,508.00	90.52	179.49	11,925.20	-8,555.20	-680.58	-93.51	400,624.02	672,427.69	3.97	679.93
12,537.00	90.41	179.38	11,924.97	-8,554.97	-709.58	-93.23	400,595.02	672,427.97	0.54	708.93
12,630.00	90.69	180.58	11,924.08	-8,554.08	-802.57	-93.19	400,502.03	672,428.01	1.32	801.92
12,725.00	90.80	180.25	11,922.84	-8,552.84	-897.56	-93.88	400,407.04	672,427.32	0.37	896.90
12,820.00	90.71	180.24	11,921.59	-8,551.59	-992.55	-94.29	400,312.05	672,426.91	0.10	991.89
12,914.00	90.83	180.16	11,920.33	-8,550.33	-1,086.54	-94.62	400,218.06	672,426.58	0.15	1,085.87
13,008.00	90.77	180.31	11,919.01	-8,549.01	-1,180.53	-95.00	400,124.07	672,426.20	0.17	1,179.86
13,101.00	90.57	180.31	11,917.93	-8,547.93	-1,273.52	-95.51	400,031.08	672,425.69	0.22	1,272.85
13,195.00	90.29	180.69	11,917.22	-8,547.22	-1,367.52	-96.33	399,937.08	672,424.87	0.50	1,366.83
13,289.00	90.57	180.41	11,916.51	-8,546.51	-1,461.51	-97.23	399,843.09	672,423.97	0.42	1,460.82
13,383.00	90.46	180.76	11,915.67	-8,545.67	-1,555.50	-98.19	399,749.10	672,423.01	0.39	1,554.80
13,477.00	90.18	180.69	11,915.15	-8,545.15	-1,649.49	-99.38	399,655.11	672,421.82	0.31	1,648.78



# GeoGuidance Drilling FINAL SURVEY REPORT



<b>Company:</b>	XTO ENERGY INC.	<b>Local Co-ordinate Reference:</b>	Well PLU 28 BS 127H
<b>Project:</b>	EDDY COUNTY, NM	<b>TVD Reference:</b>	PLU 28 BS 127H @ 3370.00usft (N F15 - 32' KB)
<b>Site:</b>	POKER LAKE UNIT 28 BS	<b>MD Reference:</b>	PLU 28 BS 127H @ 3370.00usft (N F15 - 32' KB)
<b>Well:</b>	PLU 28 BS 127H	<b>North Reference:</b>	Grid
<b>Wellbore:</b>	PLU 28 BS 127H	<b>Survey Calculation Method:</b>	Minimum Curvature
<b>Design:</b>	PLU 28 BS 127H	<b>Database:</b>	TEXAS

Survey										
MD (usft)	Inc (°)	Azi (azimuth) (°)	TVD (usft)	TVDSS (usft)	N/S (usft)	E/W (usft)	Northing (usft)	Easting (usft)	DLeg (°/100usft)	V. Sec (usft)
13,570.00	90.29	180.51	11,914.76	-8,544.76	-1,742.49	-100.35	399,562.11	672,420.85	0.23	1,741.76
13,665.00	90.10	180.80	11,914.44	-8,544.44	-1,837.48	-101.44	399,467.12	672,419.76	0.36	1,836.75
13,758.00	90.49	178.81	11,913.96	-8,543.96	-1,930.47	-101.12	399,374.13	672,420.08	2.18	1,929.74
13,851.00	90.46	178.94	11,913.19	-8,543.19	-2,023.45	-99.29	399,281.15	672,421.91	0.14	2,022.73
13,944.00	89.85	178.71	11,912.94	-8,542.94	-2,116.43	-97.39	399,188.17	672,423.81	0.70	2,115.72
14,038.00	89.82	179.30	11,913.21	-8,543.21	-2,210.42	-95.76	399,094.18	672,425.44	0.63	2,209.71
14,132.00	90.04	179.08	11,913.32	-8,543.32	-2,304.41	-94.43	399,000.19	672,426.77	0.33	2,303.71
14,226.00	89.68	179.03	11,913.55	-8,543.55	-2,398.39	-92.88	398,906.21	672,428.32	0.39	2,397.71
14,320.00	89.87	179.00	11,913.92	-8,543.92	-2,492.38	-91.26	398,812.22	672,429.94	0.20	2,491.70
14,414.00	89.90	178.71	11,914.11	-8,544.11	-2,586.36	-89.38	398,718.24	672,431.82	0.31	2,585.69
14,508.00	89.57	179.27	11,914.55	-8,544.55	-2,680.34	-87.73	398,624.26	672,433.47	0.69	2,679.69
14,602.00	89.90	179.64	11,914.98	-8,544.98	-2,774.34	-86.83	398,530.26	672,434.37	0.53	2,773.68
14,696.00	89.68	178.88	11,915.33	-8,545.33	-2,868.33	-85.62	398,436.27	672,435.58	0.84	2,867.68
14,789.00	90.60	179.08	11,915.10	-8,545.10	-2,961.31	-83.96	398,343.29	672,437.24	1.01	2,960.67
14,882.00	89.54	178.80	11,914.99	-8,544.99	-3,054.30	-82.24	398,250.30	672,438.96	1.18	3,053.67
14,977.00	90.29	178.70	11,915.13	-8,545.13	-3,149.27	-80.17	398,155.33	672,441.03	0.80	3,148.65
15,071.00	90.27	180.17	11,914.67	-8,544.67	-3,243.26	-79.24	398,061.34	672,441.96	1.56	3,242.65
15,165.00	90.38	178.35	11,914.13	-8,544.13	-3,337.25	-78.03	397,967.35	672,443.17	1.94	3,336.64
15,260.00	89.93	180.20	11,913.88	-8,543.88	-3,432.24	-76.83	397,872.36	672,444.37	2.00	3,431.64
15,355.00	90.15	179.08	11,913.81	-8,543.81	-3,527.24	-76.23	397,777.36	672,444.97	1.20	3,526.63
15,450.00	90.80	178.54	11,913.02	-8,543.02	-3,622.21	-74.26	397,682.39	672,446.94	0.89	3,621.62
15,545.00	89.82	178.18	11,912.51	-8,542.51	-3,717.17	-71.54	397,587.43	672,449.66	1.10	3,716.60
15,640.00	89.87	179.37	11,912.77	-8,542.77	-3,812.15	-69.51	397,492.45	672,451.69	1.25	3,811.58
15,734.00	89.73	178.30	11,913.09	-8,543.09	-3,906.12	-67.60	397,398.48	672,453.60	1.15	3,905.57
15,830.00	89.87	178.99	11,913.43	-8,543.43	-4,002.10	-65.33	397,302.50	672,455.87	0.73	4,001.56
15,924.00	90.07	177.95	11,913.48	-8,543.48	-4,096.06	-62.82	397,208.54	672,458.38	1.13	4,095.54
16,018.00	87.38	178.49	11,915.57	-8,545.57	-4,189.98	-59.90	397,114.62	672,461.30	2.92	4,189.48



# GeoGuidance Drilling FINAL SURVEY REPORT



<b>Company:</b>	XTO ENERGY INC.	<b>Local Co-ordinate Reference:</b>	Well PLU 28 BS 127H
<b>Project:</b>	EDDY COUNTY, NM	<b>TVD Reference:</b>	PLU 28 BS 127H @ 3370.00usft (N F15 - 32' KB)
<b>Site:</b>	POKER LAKE UNIT 28 BS	<b>MD Reference:</b>	PLU 28 BS 127H @ 3370.00usft (N F15 - 32' KB)
<b>Well:</b>	PLU 28 BS 127H	<b>North Reference:</b>	Grid
<b>Wellbore:</b>	PLU 28 BS 127H	<b>Survey Calculation Method:</b>	Minimum Curvature
<b>Design:</b>	PLU 28 BS 127H	<b>Database:</b>	TEXAS

Survey										
MD (usft)	Inc (°)	Azi (azimuth) (°)	TVD (usft)	TVDSS (usft)	N/S (usft)	E/W (usft)	Northing (usft)	Easting (usft)	DLeg (°/100usft)	V. Sec (usft)
16,110.00	89.73	180.47	11,917.89	-8,547.89	-4,281.94	-59.06	397,022.66	672,462.14	3.34	4,281.44
16,205.00	89.71	178.70	11,918.35	-8,548.35	-4,376.93	-58.37	396,927.67	672,462.83	1.86	4,376.43
16,299.00	90.21	179.13	11,918.42	-8,548.42	-4,470.91	-56.59	396,833.69	672,464.61	0.70	4,470.43
16,394.00	90.10	179.21	11,918.16	-8,548.16	-4,565.90	-55.22	396,738.70	672,465.98	0.14	4,565.42
16,487.00	89.82	179.03	11,918.23	-8,548.23	-4,658.89	-53.79	396,645.71	672,467.41	0.36	4,658.42
16,582.00	91.98	179.63	11,916.74	-8,546.74	-4,753.87	-52.68	396,550.73	672,468.52	2.36	4,753.40
16,675.00	91.42	177.93	11,913.98	-8,543.98	-4,846.80	-50.70	396,457.80	672,470.50	1.92	4,846.35
16,769.00	91.05	178.33	11,911.95	-8,541.95	-4,940.73	-47.63	396,363.87	672,473.57	0.58	4,940.29
16,862.00	91.47	178.86	11,909.90	-8,539.90	-5,033.68	-45.35	396,270.92	672,475.85	0.73	5,033.25
16,956.00	91.53	179.13	11,907.44	-8,537.44	-5,127.63	-43.71	396,176.97	672,477.49	0.29	5,127.22
17,050.00	91.47	179.46	11,904.98	-8,534.98	-5,221.59	-42.55	396,083.01	672,478.65	0.36	5,221.18
17,144.00	90.57	180.53	11,903.31	-8,533.31	-5,315.58	-42.54	395,989.02	672,478.66	1.49	5,315.16
17,238.00	91.08	181.91	11,901.96	-8,531.96	-5,409.54	-44.54	395,895.06	672,476.66	1.56	5,409.11
17,331.00	91.22	181.78	11,900.09	-8,530.09	-5,502.48	-47.54	395,802.12	672,473.66	0.21	5,502.02
17,425.00	90.74	181.73	11,898.48	-8,528.48	-5,596.42	-50.41	395,708.18	672,470.79	0.51	5,595.95
17,519.00	91.11	180.04	11,896.96	-8,526.96	-5,690.39	-51.87	395,614.21	672,469.33	1.84	5,689.91
17,613.00	90.43	178.35	11,895.70	-8,525.70	-5,784.37	-50.55	395,520.23	672,470.65	1.94	5,783.89
17,708.00	89.12	178.19	11,896.07	-8,526.07	-5,879.32	-47.68	395,425.28	672,473.52	1.39	5,878.86
17,802.00	88.28	177.62	11,898.21	-8,528.21	-5,973.23	-44.24	395,331.37	672,476.96	1.08	5,972.80
17,897.00	87.66	176.71	11,901.57	-8,531.57	-6,068.06	-39.55	395,236.54	672,481.65	1.16	6,067.65
17,990.00	88.30	176.98	11,904.85	-8,534.85	-6,160.86	-34.43	395,143.74	672,486.77	0.75	6,160.48
18,085.00	88.50	178.61	11,907.50	-8,537.50	-6,255.75	-30.78	395,048.85	672,490.42	1.73	6,255.39
18,179.00	89.45	181.80	11,909.19	-8,539.19	-6,349.72	-31.11	394,954.88	672,490.09	3.54	6,349.36
18,273.00	90.63	182.90	11,909.12	-8,539.12	-6,443.64	-34.97	394,860.96	672,486.23	1.72	6,443.25
18,367.00	91.70	182.85	11,907.21	-8,537.21	-6,537.50	-39.68	394,767.10	672,481.52	1.14	6,537.08
18,462.00	90.99	183.00	11,904.98	-8,534.98	-6,632.35	-44.53	394,672.25	672,476.67	0.76	6,631.89
18,556.00	91.42	183.21	11,903.00	-8,533.00	-6,726.19	-49.62	394,578.41	672,471.58	0.51	6,725.69



# GeoGuidance Drilling FINAL SURVEY REPORT



<b>Company:</b>	XTO ENERGY INC.	<b>Local Co-ordinate Reference:</b>	Well PLU 28 BS 127H
<b>Project:</b>	EDDY COUNTY, NM	<b>TVD Reference:</b>	PLU 28 BS 127H @ 3370.00usft (N F15 - 32' KB)
<b>Site:</b>	POKER LAKE UNIT 28 BS	<b>MD Reference:</b>	PLU 28 BS 127H @ 3370.00usft (N F15 - 32' KB)
<b>Well:</b>	PLU 28 BS 127H	<b>North Reference:</b>	Grid
<b>Wellbore:</b>	PLU 28 BS 127H	<b>Survey Calculation Method:</b>	Minimum Curvature
<b>Design:</b>	PLU 28 BS 127H	<b>Database:</b>	TEXAS

Survey										
MD (usft)	Inc (°)	Azi (azimuth) (°)	TVD (usft)	TVDSS (usft)	N/S (usft)	E/W (usft)	Northing (usft)	Easting (usft)	DLeg (°/100usft)	V. Sec (usft)
18,649.00	91.47	181.15	11,900.66	-8,530.66	-6,819.09	-53.16	394,485.51	672,468.04	2.22	6,818.57
18,744.00	91.53	180.19	11,898.17	-8,528.17	-6,914.05	-54.27	394,390.55	672,466.93	1.01	6,913.52
18,839.00	91.50	178.88	11,895.66	-8,525.66	-7,009.01	-53.50	394,295.59	672,467.70	1.38	7,008.48
18,933.00	91.78	178.91	11,892.97	-8,522.97	-7,102.95	-51.68	394,201.65	672,469.52	0.30	7,102.44
19,027.00	91.47	178.52	11,890.30	-8,520.30	-7,196.89	-49.58	394,107.71	672,471.62	0.53	7,196.39
19,121.00	90.43	178.68	11,888.74	-8,518.74	-7,290.85	-47.28	394,013.75	672,473.92	1.12	7,290.36
19,215.00	89.34	179.80	11,888.93	-8,518.93	-7,384.84	-46.03	393,919.76	672,475.17	1.66	7,384.35
19,309.00	90.97	179.06	11,888.68	-8,518.68	-7,478.83	-45.10	393,825.77	672,476.10	1.90	7,478.35
19,404.00	91.11	177.26	11,886.95	-8,516.95	-7,573.76	-42.05	393,730.84	672,479.15	1.90	7,573.30
19,498.00	91.11	176.57	11,885.13	-8,515.13	-7,667.60	-36.99	393,637.00	672,484.21	0.73	7,667.17
19,592.00	91.02	176.32	11,883.39	-8,513.39	-7,761.41	-31.16	393,543.19	672,490.04	0.28	7,761.02
19,686.00	91.22	179.17	11,881.55	-8,511.55	-7,855.31	-27.47	393,449.29	672,493.73	3.04	7,854.94
19,781.00	91.37	184.62	11,879.40	-8,509.40	-7,950.19	-30.60	393,354.41	672,490.60	5.74	7,949.80
19,875.00	91.30	184.57	11,877.21	-8,507.21	-8,043.87	-38.13	393,260.73	672,483.07	0.09	8,043.42
19,970.00	91.13	184.94	11,875.19	-8,505.19	-8,138.52	-46.01	393,166.08	672,475.19	0.43	8,138.02
20,065.00	91.13	184.44	11,873.32	-8,503.32	-8,233.18	-53.77	393,071.42	672,467.43	0.53	8,232.62
20,159.00	91.02	180.16	11,871.56	-8,501.56	-8,327.07	-57.54	392,977.53	672,463.66	4.55	8,326.48
20,252.00	91.02	178.99	11,869.90	-8,499.90	-8,420.05	-56.85	392,884.55	672,464.35	1.26	8,419.47
20,347.00	91.11	176.85	11,868.13	-8,498.13	-8,514.96	-53.41	392,789.64	672,467.79	2.25	8,514.40
20,441.00	91.19	176.23	11,866.25	-8,496.25	-8,608.77	-47.73	392,695.83	672,473.47	0.66	8,608.25
20,536.00	90.99	176.25	11,864.44	-8,494.44	-8,703.55	-41.51	392,601.05	672,479.69	0.21	8,703.07
20,630.00	91.05	175.50	11,862.77	-8,492.77	-8,797.29	-34.75	392,507.31	672,486.45	0.80	8,796.85
20,724.00	91.30	175.95	11,860.84	-8,490.84	-8,891.01	-27.74	392,413.59	672,493.46	0.55	8,890.62
20,819.00	91.11	180.18	11,858.84	-8,488.84	-8,985.91	-24.53	392,318.69	672,496.67	4.46	8,985.54
20,912.00	90.83	184.27	11,857.27	-8,487.27	-9,078.81	-28.14	392,225.79	672,493.06	4.41	9,078.41
21,005.00	91.05	187.28	11,855.74	-8,485.74	-9,171.32	-37.50	392,133.28	672,483.70	3.24	9,170.85
21,098.00	90.99	186.03	11,854.08	-8,484.08	-9,263.67	-48.27	392,040.93	672,472.93	1.35	9,263.13



# GeoGuidance Drilling FINAL SURVEY REPORT



<b>Company:</b>	XTO ENERGY INC.	<b>Local Co-ordinate Reference:</b>	Well PLU 28 BS 127H
<b>Project:</b>	EDDY COUNTY, NM	<b>TVD Reference:</b>	PLU 28 BS 127H @ 3370.00usft (N F15 - 32' KB)
<b>Site:</b>	POKER LAKE UNIT 28 BS	<b>MD Reference:</b>	PLU 28 BS 127H @ 3370.00usft (N F15 - 32' KB)
<b>Well:</b>	PLU 28 BS 127H	<b>North Reference:</b>	Grid
<b>Wellbore:</b>	PLU 28 BS 127H	<b>Survey Calculation Method:</b>	Minimum Curvature
<b>Design:</b>	PLU 28 BS 127H	<b>Database:</b>	TEXAS

Survey										
MD (usft)	Inc (°)	Azi (azimuth) (°)	TVD (usft)	TVDSS (usft)	N/S (usft)	E/W (usft)	Northing (usft)	Easting (usft)	DLeg (°/100usft)	V. Sec (usft)
21,192.00	91.22	181.22	11,852.27	-8,482.27	-9,357.44	-54.21	391,947.16	672,466.99	5.12	9,356.85
21,287.00	91.19	180.91	11,850.27	-8,480.27	-9,452.40	-55.98	391,852.20	672,465.22	0.33	9,451.80
21,381.00	91.56	180.65	11,848.02	-8,478.02	-9,546.37	-57.26	391,758.23	672,463.94	0.48	9,545.76
21,475.00	91.19	179.29	11,845.76	-8,475.76	-9,640.34	-57.21	391,664.26	672,463.99	1.50	9,639.72
21,569.00	90.97	177.88	11,843.99	-8,473.99	-9,734.29	-54.89	391,570.31	672,466.31	1.52	9,733.69
21,663.00	91.11	177.99	11,842.28	-8,472.28	-9,828.21	-51.50	391,476.39	672,469.70	0.19	9,827.63
21,757.00	91.30	179.68	11,840.31	-8,470.31	-9,922.17	-49.59	391,382.43	672,471.61	1.81	9,921.60
21,851.00	91.11	177.98	11,838.33	-8,468.33	-10,016.12	-47.67	391,288.48	672,473.53	1.82	10,015.57
21,946.00	91.13	177.53	11,836.47	-8,466.47	-10,111.03	-43.95	391,193.57	672,477.25	0.47	10,110.50
22,039.00	91.64	178.48	11,834.23	-8,464.23	-10,203.95	-40.72	391,100.65	672,480.48	1.16	10,203.44
22,132.00	91.13	178.17	11,831.98	-8,461.98	-10,296.88	-38.00	391,007.72	672,483.20	0.64	10,296.38
22,226.00	90.77	175.87	11,830.42	-8,460.42	-10,390.73	-33.11	390,913.87	672,488.09	2.48	10,390.27
22,320.00	91.11	176.95	11,828.88	-8,458.88	-10,484.54	-27.23	390,820.06	672,493.97	1.20	10,484.11
22,414.00	91.02	179.58	11,827.13	-8,457.13	-10,578.47	-24.38	390,726.13	672,496.82	2.80	10,578.06
22,508.00	91.33	180.18	11,825.20	-8,455.20	-10,672.45	-24.18	390,632.15	672,497.02	0.72	10,672.04
22,602.00	91.61	180.71	11,822.79	-8,452.79	-10,766.41	-24.91	390,538.19	672,496.29	0.64	10,765.99
22,696.00	91.41	180.66	11,820.31	-8,450.31	-10,860.37	-26.04	390,444.23	672,495.16	0.22	10,859.95
22,790.00	91.11	180.19	11,818.25	-8,448.25	-10,954.35	-26.74	390,350.25	672,494.46	0.59	10,953.91
22,884.00	91.05	179.69	11,816.47	-8,446.47	-11,048.33	-26.64	390,256.27	672,494.56	0.54	11,047.89
22,977.00	91.02	179.85	11,814.79	-8,444.79	-11,141.32	-26.26	390,163.28	672,494.94	0.18	11,140.88
23,071.00	89.96	180.02	11,813.99	-8,443.99	-11,235.31	-26.16	390,069.29	672,495.04	1.14	11,234.87
23,165.00	90.18	179.57	11,813.88	-8,443.88	-11,329.31	-25.82	389,975.29	672,495.38	0.53	11,328.87
23,259.00	90.21	179.19	11,813.56	-8,443.56	-11,423.30	-24.80	389,881.30	672,496.40	0.41	11,422.87
23,353.00	88.98	178.60	11,814.22	-8,444.22	-11,517.28	-22.99	389,787.32	672,498.21	1.45	11,516.86
23,447.00	89.57	179.60	11,815.41	-8,445.41	-11,611.26	-21.51	389,693.34	672,499.69	1.24	11,610.85
23,542.00	90.41	180.31	11,815.43	-8,445.43	-11,706.26	-21.44	389,598.34	672,499.76	1.16	11,705.84
23,636.00	89.99	180.57	11,815.10	-8,445.10	-11,800.26	-22.16	389,504.34	672,499.04	0.53	11,799.83



# GeoGuidance Drilling FINAL SURVEY REPORT



<b>Company:</b>	XTO ENERGY INC.	<b>Local Co-ordinate Reference:</b>	Well PLU 28 BS 127H
<b>Project:</b>	EDDY COUNTY, NM	<b>TVD Reference:</b>	PLU 28 BS 127H @ 3370.00usft (N F15 - 32' KB)
<b>Site:</b>	POKER LAKE UNIT 28 BS	<b>MD Reference:</b>	PLU 28 BS 127H @ 3370.00usft (N F15 - 32' KB)
<b>Well:</b>	PLU 28 BS 127H	<b>North Reference:</b>	Grid
<b>Wellbore:</b>	PLU 28 BS 127H	<b>Survey Calculation Method:</b>	Minimum Curvature
<b>Design:</b>	PLU 28 BS 127H	<b>Database:</b>	TEXAS

Survey										
MD (usft)	Inc (°)	Azi (azimuth) (°)	TVD (usft)	TVDSS (usft)	N/S (usft)	E/W (usft)	Northing (usft)	Easting (usft)	DLeg (°/100usft)	V. Sec (usft)
23,729.00	89.17	180.15	11,815.78	-8,445.78	-11,893.25	-22.75	389,411.35	672,498.45	0.99	11,892.82
23,823.00	89.54	180.91	11,816.84	-8,446.84	-11,987.24	-23.62	389,317.36	672,497.58	0.90	11,986.80
23,916.00	90.32	181.46	11,816.95	-8,446.95	-12,080.22	-25.54	389,224.38	672,495.66	1.03	12,079.76
24,010.00	91.44	181.19	11,815.51	-8,445.51	-12,174.18	-27.71	389,130.42	672,493.49	1.23	12,173.71
24,039.00	90.60	180.18	11,814.99	-8,444.99	-12,203.17	-28.06	389,101.43	672,493.14	4.53	12,202.70
24,105.00	91.86	180.22	11,813.57	-8,443.57	-12,269.16	-28.29	389,035.44	672,492.91	1.91	12,268.68
24,198.00	88.95	178.60	11,812.92	-8,442.92	-12,362.14	-27.33	388,942.46	672,493.87	3.58	12,361.66
24,292.00	88.59	178.10	11,814.94	-8,444.94	-12,456.08	-24.63	388,848.52	672,496.57	0.66	12,455.62
24,386.00	89.23	178.45	11,816.72	-8,446.72	-12,550.01	-21.80	388,754.59	672,499.40	0.78	12,549.58
24,480.00	89.79	178.34	11,817.53	-8,447.53	-12,643.97	-19.16	388,660.63	672,502.04	0.61	12,643.55
24,575.00	88.92	177.75	11,818.60	-8,448.60	-12,738.91	-15.92	388,565.69	672,505.28	1.11	12,738.51
24,670.00	89.11	177.91	11,820.23	-8,450.23	-12,833.83	-12.33	388,470.77	672,508.87	0.26	12,833.45
24,765.00	88.89	178.85	11,821.89	-8,451.89	-12,928.78	-9.64	388,375.82	672,511.56	1.02	12,928.41
24,860.00	91.08	179.94	11,821.91	-8,451.91	-13,023.76	-8.64	388,280.84	672,512.56	2.57	13,023.40
24,954.00	91.69	180.01	11,819.64	-8,449.64	-13,117.74	-8.60	388,186.86	672,512.60	0.65	13,117.37
25,047.00	89.54	178.57	11,818.64	-8,448.64	-13,210.71	-7.44	388,093.89	672,513.76	2.78	13,210.36
25,141.00	89.01	177.90	11,819.83	-8,449.83	-13,304.66	-4.55	387,999.94	672,516.65	0.91	13,304.32
25,173.00	88.78	177.81	11,820.45	-8,450.45	-13,336.63	-3.35	387,967.97	672,517.85	0.77	13,336.30
25,253.00	88.78	177.81	11,822.15	-8,452.15	-13,416.56	-0.30	387,888.04	672,520.90	0.00	13,416.24





# GeoGuidance Drilling FINAL SURVEY REPORT



<b>Company:</b>	XTO ENERGY INC.	<b>Local Co-ordinate Reference:</b>	Well PLU 28 BS 127H
<b>Project:</b>	EDDY COUNTY, NM	<b>TVD Reference:</b>	PLU 28 BS 127H @ 3370.00usft (N F15 - 32' KB)
<b>Site:</b>	POKER LAKE UNIT 28 BS	<b>MD Reference:</b>	PLU 28 BS 127H @ 3370.00usft (N F15 - 32' KB)
<b>Well:</b>	PLU 28 BS 127H	<b>North Reference:</b>	Grid
<b>Wellbore:</b>	PLU 28 BS 127H	<b>Survey Calculation Method:</b>	Minimum Curvature
<b>Design:</b>	PLU 28 BS 127H	<b>Database:</b>	TEXAS

## Design Annotations

Measured Depth (usft)	Vertical Depth (usft)	Local Coordinates		Comment
		+N/-S (usft)	+E/-W (usft)	
1,298.00	1,297.84	13.89	-1.62	13 3/8" CASING POINT
10,905.00	10,896.56	207.21	-60.32	9 5/8" CASING
11,200.00	11,191.43	205.30	-63.79	CURVE KOP
12,327.00	11,929.96	-499.71	-90.21	END OF CURVE
25,253.00	11,822.15	-13,416.56	-0.30	PROJECTION TO TD

Checked By: \_\_\_\_\_ Approved By: \_\_\_\_\_ Date: \_\_\_\_\_



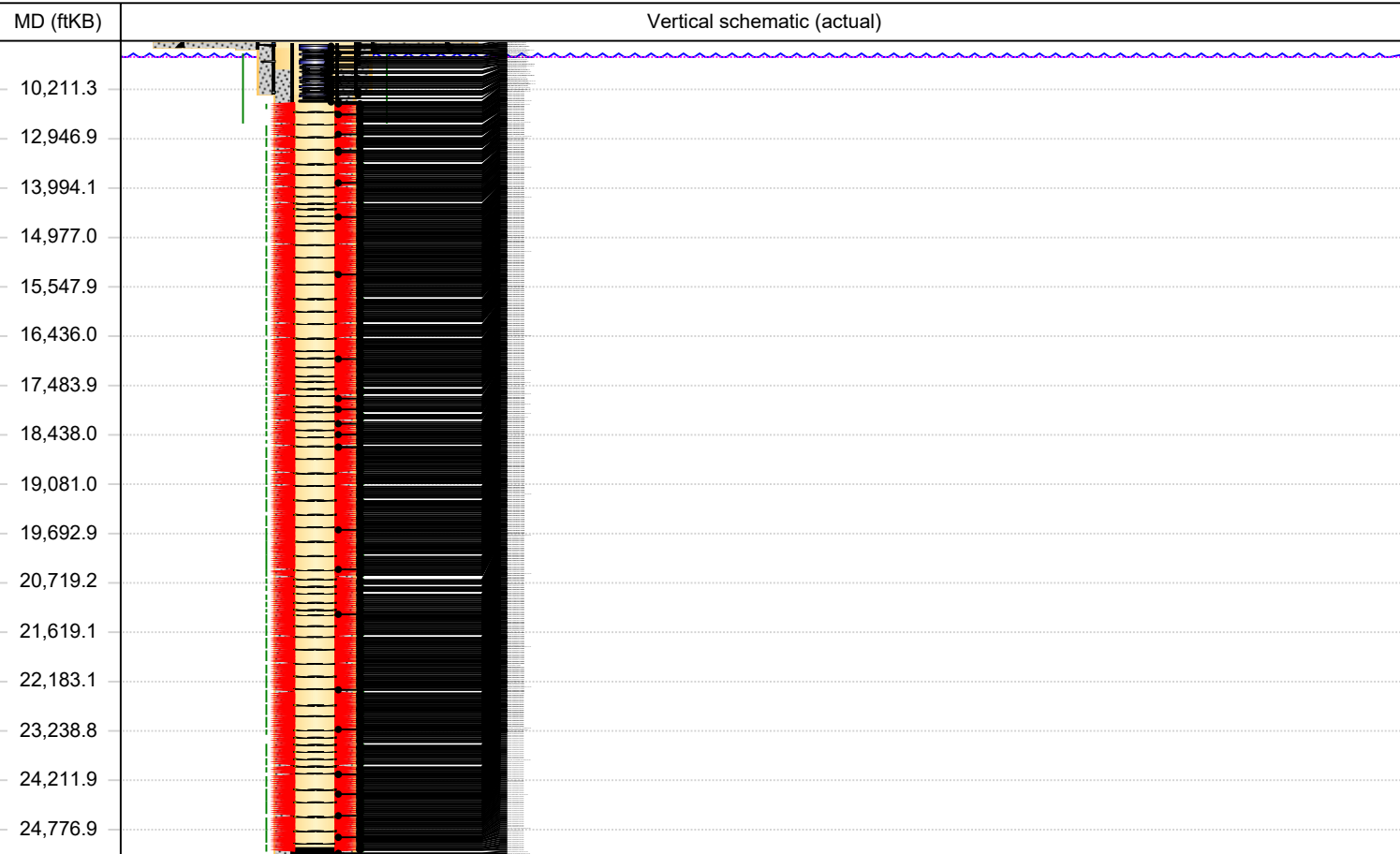
# Wellbore Diagram - RRC

## Well Name: POKER LAKE UNIT 28 BS 127H

API/UWI 3001545539	SAP Cost Center ID 1667161001	Permit Number BLM	State/Province New Mexico		County Eddy		
Surface Location T25S-R31E-S28		Spud Date 1/24/2020 08:00	Original KB Elevation (ft) 3,370.00	Ground Elevation (ft) 3,338.00	KB-Ground Distance (ft) 32.00	Surface Casing Flange Elevatio... -1.20	
Lease POKER LAKE UNIT 28 BS							

Horizontal, Original Hole, 2/1/2021 9:52:47 AM

Vertical schematic (actual)



Perforations		
Top (ftKB)	Btm (ftKB)	Current Status
12,506.0	12,508.0	
12,521.0	12,523.0	
12,536.0	12,538.0	
12,551.0	12,553.0	
12,566.0	12,568.0	
12,581.0	12,583.0	
12,621.0	12,623.0	
12,634.0	12,636.0	
12,647.0	12,649.0	
12,664.0	12,666.0	
12,674.0	12,676.0	
12,687.0	12,689.0	
12,698.0	12,700.0	
12,713.0	12,715.0	
12,726.0	12,728.0	
12,739.0	12,741.0	
12,779.0	12,781.0	
12,791.0	12,793.0	
12,804.0	12,806.0	
12,816.0	12,818.0	
12,829.0	12,831.0	
12,842.0	12,844.0	
12,854.0	12,856.0	
12,867.0	12,869.0	
12,879.0	12,881.0	
12,892.0	12,894.0	
12,932.0	12,934.0	
12,945.0	12,947.0	
12,959.0	12,961.0	
12,972.0	12,974.0	
12,985.0	12,987.0	
12,998.0	13,000.0	
13,011.0	13,013.0	
13,025.0	13,027.0	
13,038.0	13,040.0	
13,051.0	13,053.0	
13,093.0	13,095.0	
13,122.0	13,124.0	
13,152.0	13,154.0	
13,181.0	13,183.0	

Cement				
Des	Top (ftKB)	Top Meas Meth	Class	Amount (sacks)
Conductor Casing Cement	32.0	Cement Returns	Redi-Mix	147
Surface Casing Cement	32.0	Visual	Other	0
Surface Casing Cement	32.0	Visual	A	645
Surface Casing Cement	32.0	Visual	H	530
Surface Casing Cement	32.0	Visual	Other	0
Intermediate 2 Casing Cement	32.0	Visual	Other	0
Intermediate 1 Casing Cement	4,595.0	Volume Calculations	Other	0



# Wellbore Diagram - RRC

## Well Name: POKER LAKE UNIT 28 BS 127H

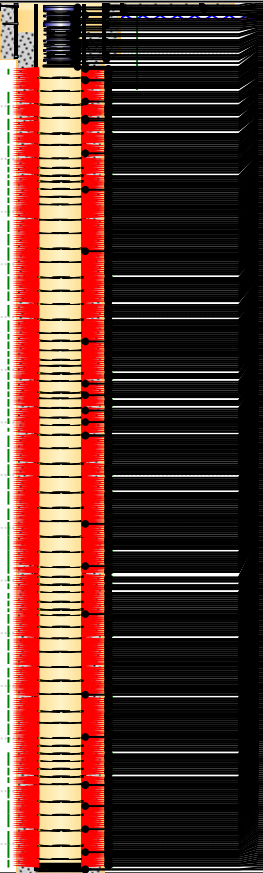
API/UWI 3001545539	SAP Cost Center ID 1667161001	Permit Number BLM	State/Province New Mexico	County Eddy
Surface Location T25S-R31E-S28	Spud Date 1/24/2020 08:00	Original KB Elevation (ft) 3,370.00	Ground Elevation (ft) 3,338.00	KB-Ground Distance (ft) 32.00
				Surface Casing Flange Elevatio... -1.20

Horizontal, Original Hole, 2/1/2021 9:52:48 AM

Vertical schematic (actual)

MD (ftKB)

10,211.3  
12,946.9  
13,994.1  
14,977.0  
15,547.9  
16,436.0  
17,483.9  
18,438.0  
19,081.0  
19,692.9  
20,719.2  
21,619.1  
22,183.1  
23,238.8  
24,211.9  
24,776.9



### Perforations

Top (ftKB)	Btm (ftKB)	Current Status
13,211.0	13,213.0	
13,241.0	13,243.0	
13,270.0	13,272.0	
13,300.0	13,302.0	
13,329.0	13,331.0	
13,359.0	13,361.0	
13,399.0	13,401.0	
13,428.0	13,430.0	
13,457.0	13,459.0	
13,486.0	13,488.0	
13,515.0	13,517.0	
13,543.0	13,545.0	
13,572.0	13,574.0	
13,601.0	13,603.0	
13,630.0	13,632.0	
13,659.0	13,661.0	
13,699.0	13,701.0	
13,727.0	13,729.0	
13,755.0	13,757.0	
13,783.0	13,785.0	
13,811.0	13,813.0	
13,839.0	13,841.0	
13,867.0	13,869.0	
13,895.0	13,897.0	
13,923.0	13,925.0	
13,951.0	13,953.0	
13,994.0	13,996.0	
14,016.0	14,018.0	
14,041.0	14,043.0	
14,066.0	14,068.0	
14,091.0	14,093.0	
14,116.0	14,118.0	
14,141.0	14,143.0	
14,166.0	14,168.0	
14,191.0	14,193.0	
14,216.0	14,218.0	
14,241.0	14,243.0	
14,266.0	14,268.0	
14,341.0	14,343.0	
14,366.0	14,368.0	

### Cement

Des	Top (ftKB)	Top Meas Meth	Class	Amount (sacks)
Intermediate 2 Casing Cement	32.0	Visual	Other	1,290
Intermediate 1 Casing Cement	4,595.0	Volume Calculations	Other	875
Intermediate 2 Casing Cement	32.0	Visual	H	305
Intermediate 1 Casing Cement	4,595.0	Volume Calculations	H	380
Intermediate 1 Casing Cement	4,595.0	Volume Calculations	Other	0
Intermediate 2 Casing Cement	32.0	Visual	Other	0
Production Casing Cement	5,931.0	Calculated	Varicem	4,575



Wellbore Diagram - RRC  
Well Name: POKER LAKE UNIT 28 BS 127H

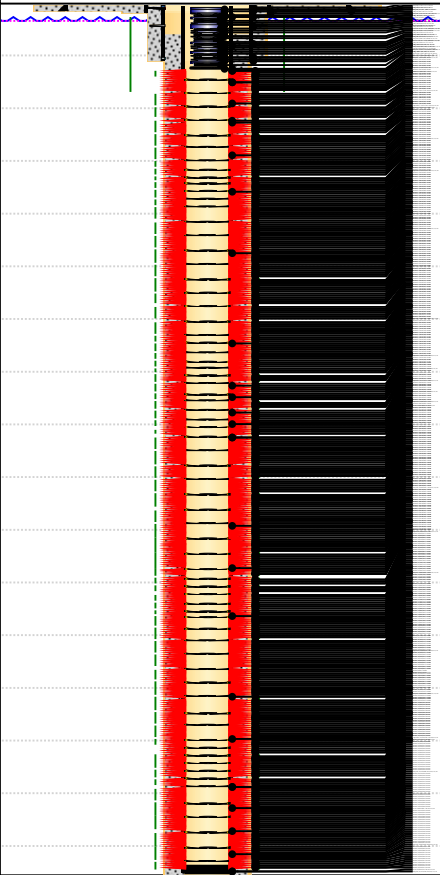
API/UWI 3001545539	SAP Cost Center ID 1667161001	Permit Number BLM	State/Province New Mexico	County Eddy			
Surface Location T25S-R31E-S28			Spud Date 1/24/2020 08:00	Original KB Elevation (ft) 3,370.00	Ground Elevation (ft) 3,338.00	KB-Ground Distance (ft) 32.00	Surface Casing Flange Elevatio... -1.20

Horizontal, Original Hole, 2/1/2021 9:52:49 AM

Vertical schematic (actual)

MD (ftKB)

10,211.3  
12,946.9  
13,994.1  
14,977.0  
15,547.9  
16,436.0  
17,483.9  
18,438.0  
19,081.0  
19,692.9  
20,719.2  
21,619.1  
22,183.1  
23,238.8  
24,211.9  
24,776.9



Perforations

Top (ftKB)	Btm (ftKB)	Current Status
14,391.0	14,393.0	
14,416.0	14,418.0	
14,441.0	14,443.0	
14,466.0	14,468.0	
14,491.0	14,493.0	
14,516.0	14,518.0	
14,541.0	14,543.0	
14,566.0	14,568.0	
14,603.0	14,605.0	
14,628.0	14,630.0	
14,653.0	14,655.0	
14,678.0	14,680.0	
14,703.0	14,705.0	
14,728.0	14,730.0	
14,753.0	14,755.0	
14,778.0	14,780.0	
14,803.0	14,805.0	
14,828.0	14,830.0	
14,853.0	14,855.0	
14,878.0	14,880.0	
14,903.0	14,905.0	
14,915.0	14,917.0	
14,928.0	14,930.0	
14,940.0	14,942.0	
14,952.0	14,954.0	
14,964.0	14,966.0	
14,977.0	14,979.0	
14,989.0	14,991.0	
15,001.0	15,003.0	
15,013.0	15,015.0	
15,026.0	15,028.0	
15,038.0	15,040.0	
15,058.0	15,060.0	
15,070.0	15,072.0	
15,083.0	15,085.0	
15,095.0	15,097.0	
15,107.0	15,109.0	
15,119.0	15,121.0	
15,129.0	15,131.0	
15,144.0	15,146.0	



Wellbore Diagram - RRC  
Well Name: POKER LAKE UNIT 28 BS 127H

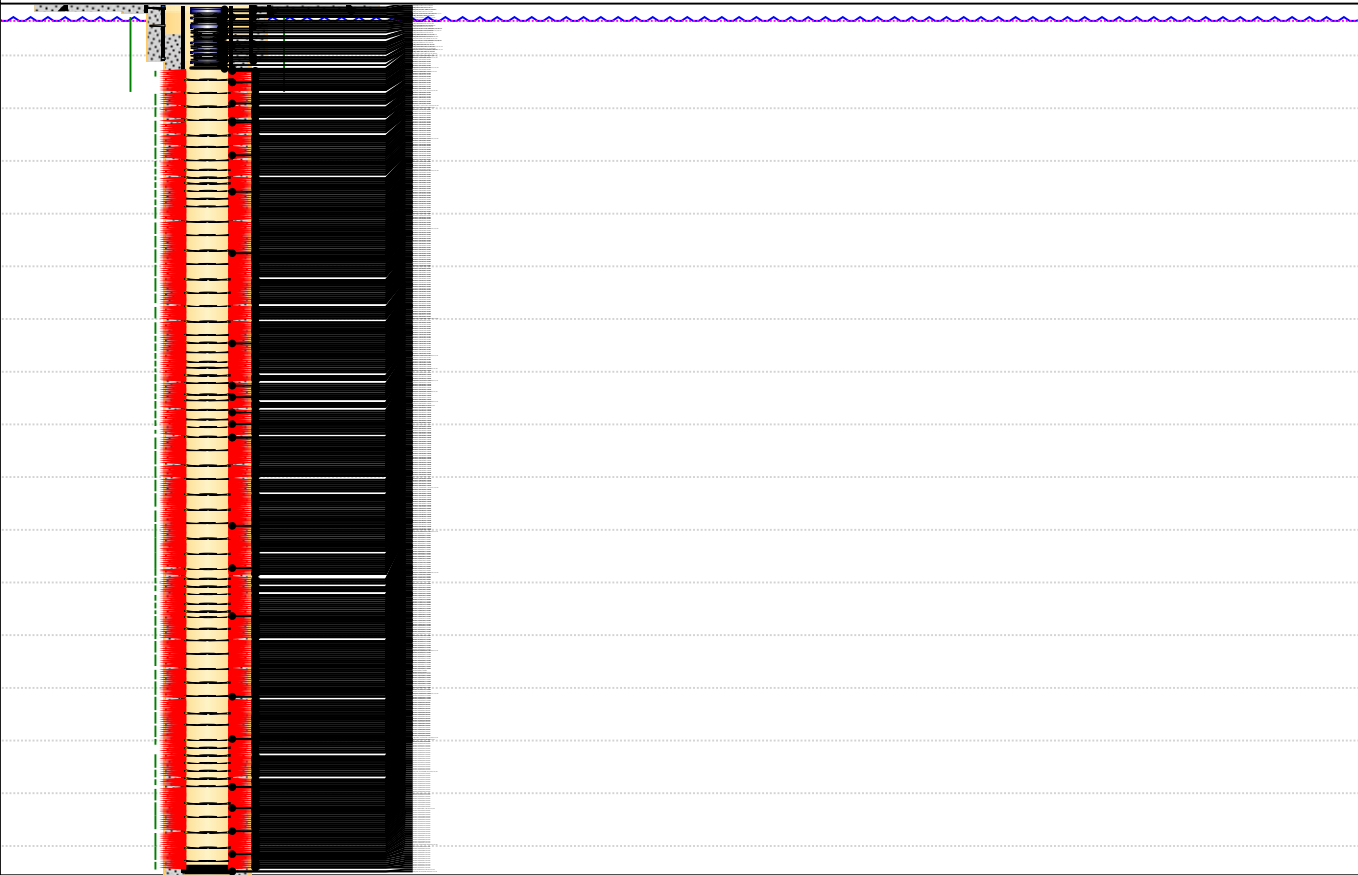
API/UWI 3001545539	SAP Cost Center ID 1667161001	Permit Number BLM	State/Province New Mexico	County Eddy			
Surface Location T25S-R31E-S28		Spud Date 1/24/2020 08:00	Original KB Elevation (ft) 3,370.00	Ground Elevation (ft) 3,338.00	KB-Ground Distance (ft) 32.00	Surface Casing Flange Elevatio...	-1.20

Horizontal, Original Hole, 2/1/2021 9:52:50 AM

Vertical schematic (actual)

MD (ftKB)

10,211.3  
12,946.9  
13,994.1  
14,977.0  
15,547.9  
16,436.0  
17,483.9  
18,438.0  
19,081.0  
19,692.9  
20,719.2  
21,619.1  
22,183.1  
23,238.8  
24,211.9  
24,776.9



Perforations

Top (ftKB)	Btm (ftKB)	Current Status
15,156.0	15,158.0	
15,168.0	15,170.0	
15,184.0	15,186.0	
15,193.0	15,195.0	
15,213.0	15,215.0	
15,227.0	15,229.0	
15,238.0	15,240.0	
15,250.0	15,252.0	
15,262.0	15,264.0	
15,274.0	15,276.0	
15,287.0	15,289.0	
15,299.0	15,301.0	
15,307.0	15,309.0	
15,323.0	15,325.0	
15,336.0	15,338.0	
15,348.0	15,350.0	
15,368.0	15,370.0	
15,380.0	15,382.0	
15,393.0	15,395.0	
15,405.0	15,407.0	
15,417.0	15,419.0	
15,429.0	15,431.0	
15,442.0	15,444.0	
15,454.0	15,456.0	
15,466.0	15,468.0	
15,478.0	15,480.0	
15,491.0	15,493.0	
15,503.0	15,505.0	
15,523.0	15,525.0	
15,535.0	15,537.0	
15,548.0	15,550.0	
15,560.0	15,562.0	
15,572.0	15,574.0	
15,584.0	15,586.0	
15,597.0	15,599.0	
15,609.0	15,611.0	
15,621.0	15,623.0	
15,633.0	15,635.0	
15,646.0	15,648.0	
15,658.0	15,660.0	



Wellbore Diagram - RRC  
Well Name: POKER LAKE UNIT 28 BS 127H

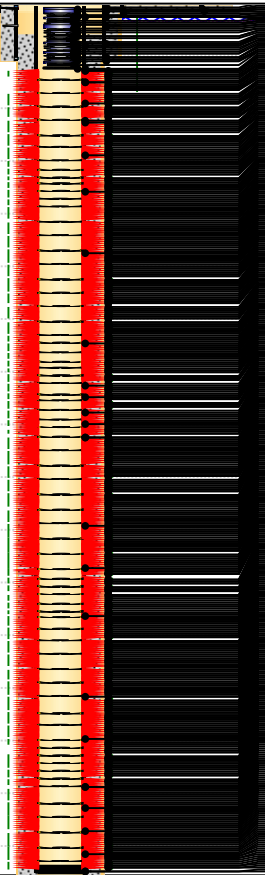
API/UWI 3001545539	SAP Cost Center ID 1667161001	Permit Number BLM	State/Province New Mexico	County Eddy	Ground Elevation (ft) 3,338.00	KB-Ground Distance (ft) 32.00	Surface Casing Flange Elevatio...
Surface Location T25S-R31E-S28	Spud Date 1/24/2020 08:00	Original KB Elevation (ft) 3,370.00					-1.20

Horizontal, Original Hole, 2/1/2021 9:52:51 AM

Vertical schematic (actual)

MD (ftKB)

10,211.3  
12,946.9  
13,994.1  
14,977.0  
15,547.9  
16,436.0  
17,483.9  
18,438.0  
19,081.0  
19,692.9  
20,719.2  
21,619.1  
22,183.1  
23,238.8  
24,211.9  
24,776.9



Perforations

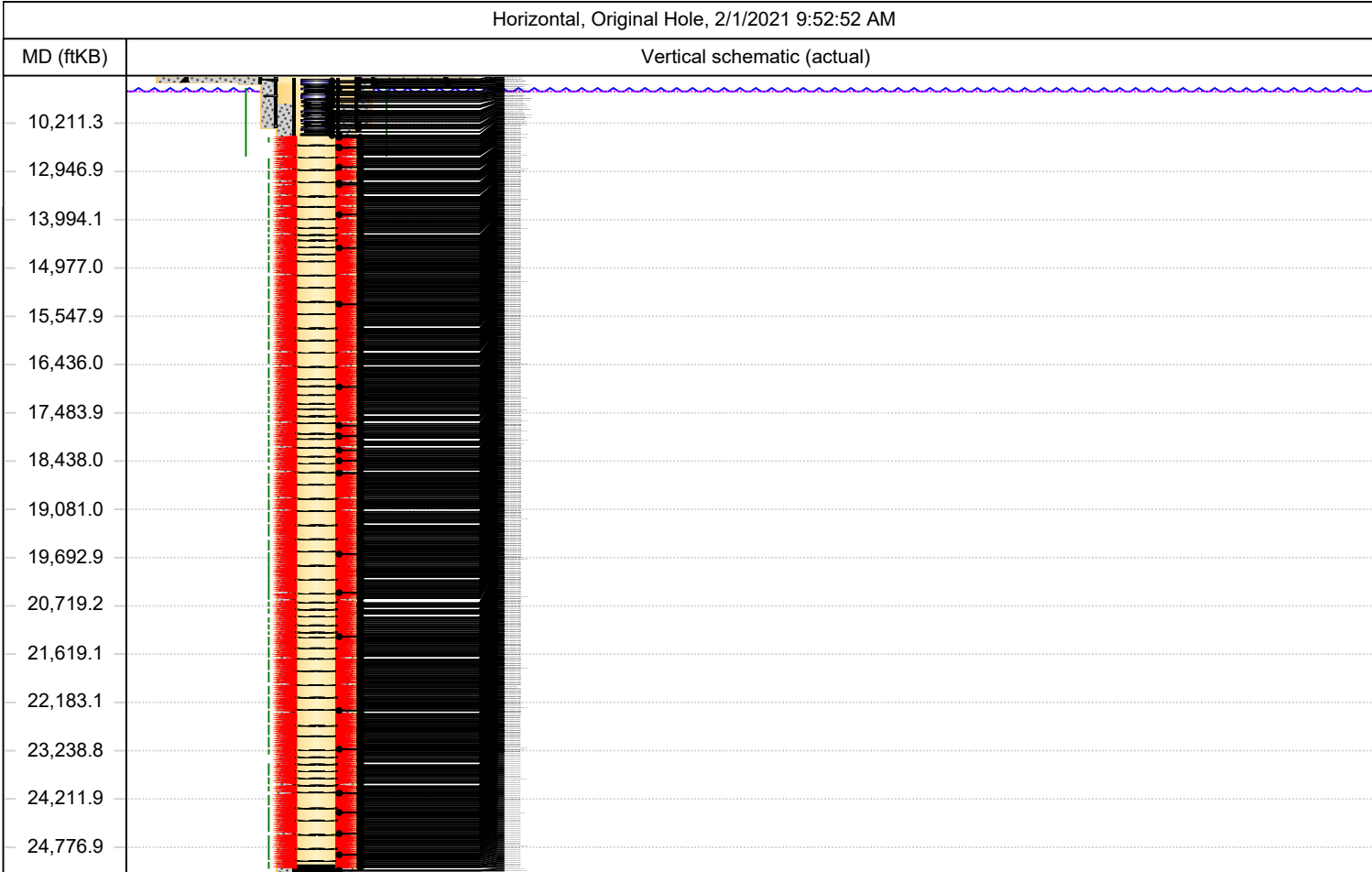
Top (ftKB)	Btm (ftKB)	Current Status
15,678.0	15,680.0	
15,690.0	15,692.0	
15,703.0	15,705.0	
15,715.0	15,717.0	
15,727.0	15,729.0	
15,739.0	15,741.0	
15,752.0	15,754.0	
15,764.0	15,766.0	
15,776.0	15,778.0	
15,788.0	15,790.0	
15,801.0	15,803.0	
15,813.0	15,815.0	
15,859.0	15,861.0	
15,883.0	15,885.0	
15,884.0	15,886.0	
15,910.0	15,912.0	
15,989.0	15,991.0	
16,012.0	16,014.0	
16,035.0	16,037.0	
16,064.0	16,066.0	
16,089.0	16,091.0	
16,115.0	16,117.0	
16,152.0	16,154.0	
16,178.0	16,180.0	
16,204.0	16,206.0	
16,229.0	16,231.0	
16,255.0	16,257.0	
16,280.0	16,282.0	
16,306.0	16,308.0	
16,332.0	16,334.0	
16,357.0	16,359.0	
16,383.0	16,385.0	
16,408.0	16,410.0	
16,434.0	16,436.0	
16,460.0	16,462.0	
16,485.0	16,487.0	
16,511.0	16,513.0	
16,536.0	16,538.0	
16,562.0	16,564.0	
16,588.0	16,590.0	



# Wellbore Diagram - RRC

## Well Name: POKER LAKE UNIT 28 BS 127H

API/UWI 3001545539	SAP Cost Center ID 1667161001	Permit Number BLM	State/Province New Mexico	County Eddy	Ground Elevation (ft) 3,338.00	KB-Ground Distance (ft) 32.00	Surface Casing Flange Elevatio... -1.20
Surface Location T25S-R31E-S28	Spud Date 1/24/2020 08:00	Original KB Elevation (ft) 3,370.00					



Perforations		
Top (ftKB)	Btm (ftKB)	Current Status
16,613.0	16,615.0	
16,639.0	16,641.0	
16,664.0	16,666.0	
16,690.0	16,692.0	
16,716.0	16,718.0	
16,741.0	16,743.0	
16,767.0	16,769.0	
16,792.0	16,794.0	
16,821.0	16,823.0	
16,844.0	16,846.0	
16,869.0	16,871.0	
16,895.0	16,897.0	
16,920.0	16,922.0	
16,936.0	16,938.0	
16,946.0	16,948.0	
16,961.0	16,963.0	
16,972.0	16,974.0	
17,001.0	17,003.0	
17,023.0	17,025.0	
17,048.0	17,050.0	
17,074.0	17,076.0	
17,100.0	17,102.0	
17,122.0	17,124.0	
17,151.0	17,153.0	
17,176.0	17,178.0	
17,202.0	17,204.0	
17,228.0	17,230.0	
17,253.0	17,255.0	
17,279.0	17,281.0	
17,302.0	17,304.0	
17,330.0	17,332.0	
17,356.0	17,358.0	
17,381.0	17,383.0	
17,432.0	17,434.0	
17,458.0	17,460.0	
17,482.0	17,484.0	
17,509.0	17,511.0	
17,535.0	17,537.0	
17,560.0	17,562.0	
17,585.0	17,587.0	





# Wellbore Diagram - RRC

## Well Name: POKER LAKE UNIT 28 BS 127H

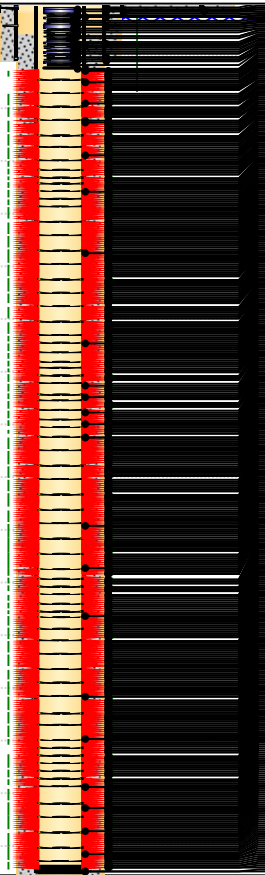
API/UWI 3001545539	SAP Cost Center ID 1667161001	Permit Number BLM	State/Province New Mexico	County Eddy	Ground Elevation (ft) 3,338.00	KB-Ground Distance (ft) 32.00	Surface Casing Flange Elevatio...
Surface Location T25S-R31E-S28	Spud Date 1/24/2020 08:00	Original KB Elevation (ft) 3,370.00					-1.20

Horizontal, Original Hole, 2/1/2021 9:52:53 AM

Vertical schematic (actual)

MD (ftKB)

10,211.3  
12,946.9  
13,994.1  
14,977.0  
15,547.9  
16,436.0  
17,483.9  
18,438.0  
19,081.0  
19,692.9  
20,719.2  
21,619.1  
22,183.1  
23,238.8  
24,211.9  
24,776.9



### Perforations

Top (ftKB)	Btm (ftKB)	Current Status
17,611.0	17,613.0	
17,636.0	17,638.0	
17,645.0	17,647.0	
17,702.0	17,704.0	
17,724.0	17,726.0	
17,750.0	17,752.0	
17,776.0	17,778.0	
17,802.0	17,804.0	
17,825.0	17,827.0	
17,854.0	17,856.0	
17,880.0	17,882.0	
17,906.0	17,908.0	
17,932.0	17,934.0	
17,958.0	17,960.0	
17,984.0	17,986.0	
18,013.0	18,015.0	
18,036.0	18,038.0	
18,062.0	18,064.0	
18,088.0	18,090.0	
18,114.0	18,116.0	
18,135.0	18,137.0	
18,180.0	18,182.0	
18,202.0	18,204.0	
18,228.0	18,230.0	
18,254.0	18,256.0	
18,280.0	18,282.0	
18,306.0	18,308.0	
18,332.0	18,334.0	
18,360.0	18,362.0	
18,384.0	18,386.0	
18,410.0	18,412.0	
18,436.0	18,438.0	
18,462.0	18,464.0	
18,484.0	18,486.0	
18,514.0	18,516.0	
18,540.0	18,542.0	
18,566.0	18,568.0	
18,592.0	18,594.0	
18,618.0	18,620.0	
18,666.0	18,668.0	





# Wellbore Diagram - RRC

## Well Name: POKER LAKE UNIT 28 BS 127H

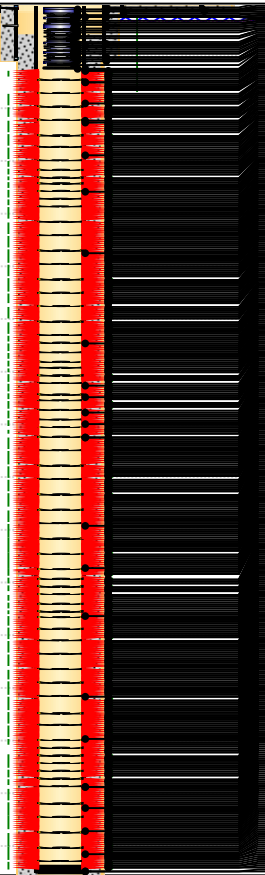
API/UWI 3001545539	SAP Cost Center ID 1667161001	Permit Number BLM	State/Province New Mexico	County Eddy	Ground Elevation (ft) 3,338.00	KB-Ground Distance (ft) 32.00	Surface Casing Flange Elevatio... -1.20
Surface Location T25S-R31E-S28		Spud Date 1/24/2020 08:00	Original KB Elevation (ft) 3,370.00				

Horizontal, Original Hole, 2/1/2021 9:52:54 AM

Vertical schematic (actual)

MD (ftKB)

10,211.3  
12,946.9  
13,994.1  
14,977.0  
15,547.9  
16,436.0  
17,483.9  
18,438.0  
19,081.0  
19,692.9  
20,719.2  
21,619.1  
22,183.1  
23,238.8  
24,211.9  
24,776.9



### Perforations

Top (ftKB)	Btm (ftKB)	Current Status
18,678.0	18,680.0	
18,690.0	18,692.0	
18,702.0	18,704.0	
18,714.0	18,716.0	
18,726.0	18,728.0	
18,738.0	18,740.0	
18,750.0	18,752.0	
18,762.0	18,764.0	
18,774.0	18,776.0	
18,780.0	18,782.0	
18,806.0	18,808.0	
18,818.0	18,820.0	
18,830.0	18,832.0	
18,842.0	18,844.0	
18,854.0	18,856.0	
18,866.0	18,868.0	
18,878.0	18,880.0	
18,890.0	18,892.0	
18,902.0	18,904.0	
18,914.0	18,916.0	
18,926.0	18,928.0	
18,931.0	18,933.0	
18,958.0	18,960.0	
18,973.0	18,975.0	
18,982.0	18,984.0	
18,994.0	18,996.0	
19,018.0	19,020.0	
19,030.0	19,032.0	
19,042.0	19,044.0	
19,054.0	19,056.0	
19,066.0	19,068.0	
19,078.0	19,080.0	
19,079.0	19,081.0	
19,110.0	19,112.0	
19,122.0	19,124.0	
19,134.0	19,136.0	
19,146.0	19,148.0	
19,158.0	19,160.0	
19,170.0	19,172.0	
19,182.0	19,184.0	



# Wellbore Diagram - RRC

## Well Name: POKER LAKE UNIT 28 BS 127H

API/UWI 3001545539	SAP Cost Center ID 1667161001	Permit Number BLM	State/Province New Mexico	County Eddy	Spud Date 1/24/2020 08:00	Original KB Elevation (ft) 3,370.00	Ground Elevation (ft) 3,338.00	KB-Ground Distance (ft) 32.00	Surface Casing Flange Elevatio... -1.20
Surface Location T25S-R31E-S28									

Horizontal, Original Hole, 2/1/2021 9:52:55 AM

Vertical schematic (actual)

MD (ftKB)

10,211.3  
12,946.9  
13,994.1  
14,977.0  
15,547.9  
16,436.0  
17,483.9  
18,438.0  
19,081.0  
19,692.9  
20,719.2  
21,619.1  
22,183.1  
23,238.8  
24,211.9  
24,776.9



### Perforations

Top (ftKB)	Btm (ftKB)	Current Status
19,194.0	19,196.0	
19,206.0	19,208.0	
19,218.0	19,220.0	
19,230.0	19,232.0	
19,242.0	19,244.0	
19,262.0	19,264.0	
19,274.0	19,276.0	
19,286.0	19,288.0	
19,298.0	19,300.0	
19,310.0	19,312.0	
19,322.0	19,324.0	
19,334.0	19,336.0	
19,346.0	19,348.0	
19,358.0	19,360.0	
19,374.0	19,376.0	
19,382.0	19,384.0	
19,387.0	19,389.0	
19,411.0	19,413.0	
19,426.0	19,428.0	
19,438.0	19,440.0	
19,450.0	19,452.0	
19,464.0	19,466.0	
19,474.0	19,476.0	
19,486.0	19,488.0	
19,498.0	19,500.0	
19,510.0	19,512.0	
19,522.0	19,524.0	
19,534.0	19,536.0	
19,539.0	19,541.0	
19,566.0	19,568.0	
19,591.0	19,593.0	
19,616.0	19,618.0	
19,641.0	19,643.0	
19,666.0	19,668.0	
19,691.0	19,693.0	
19,716.0	19,718.0	
19,741.0	19,743.0	
19,766.0	19,768.0	
19,791.0	19,793.0	
19,816.0	19,818.0	



# Wellbore Diagram - RRC

## Well Name: POKER LAKE UNIT 28 BS 127H

API/UWI 3001545539	SAP Cost Center ID 1667161001	Permit Number BLM	State/Province New Mexico	County Eddy	Ground Elevation (ft) 3,338.00	KB-Ground Distance (ft) 32.00	Surface Casing Flange Elevatio... -1.20
Surface Location T25S-R31E-S28		Spud Date 1/24/2020 08:00	Original KB Elevation (ft) 3,370.00				

Horizontal, Original Hole, 2/1/2021 9:52:56 AM

Vertical schematic (actual)

MD (ftKB)

10,211.3  
12,946.9  
13,994.1  
14,977.0  
15,547.9  
16,436.0  
17,483.9  
18,438.0  
19,081.0  
19,692.9  
20,719.2  
21,619.1  
22,183.1  
23,238.8  
24,211.9  
24,776.9



### Perforations

Top (ftKB)	Btm (ftKB)	Current Status
19,841.0	19,843.0	
19,868.0	19,870.0	
19,891.0	19,893.0	
19,916.0	19,918.0	
19,941.0	19,943.0	
19,966.0	19,968.0	
19,991.0	19,993.0	
20,016.0	20,018.0	
20,039.0	20,041.0	
20,066.0	20,068.0	
20,093.0	20,095.0	
20,116.0	20,118.0	
20,136.0	20,138.0	
20,166.0	20,168.0	
20,191.0	20,193.0	
20,216.0	20,218.0	
20,241.0	20,243.0	
20,263.0	20,265.0	
20,291.0	20,293.0	
20,316.0	20,318.0	
20,341.0	20,343.0	
20,366.0	20,368.0	
20,391.0	20,393.0	
20,416.0	20,418.0	
20,434.0	20,436.0	
20,478.0	20,479.0	Active (20,478.0 - 20,479.0 ftKB)
20,500.0	20,501.0	Active (20,500.0 - 20,501.0 ftKB)
20,524.0	20,525.0	Active (20,524.0 - 20,525.0 ftKB)
20,549.0	20,550.0	Active (20,478.0 - 20,597.0 ftKB)
20,573.0	20,574.0	Active (20,478.0 - 20,597.0 ftKB)
20,597.0	20,598.0	Active (20,478.0 - 20,597.0 ftKB)
20,621.0	20,622.0	Active (20,621.0 - 20,622.0 ftKB)
20,644.0	20,645.0	Active (20,644.0 - 20,645.0 ftKB)



# Wellbore Diagram - RRC

## Well Name: POKER LAKE UNIT 28 BS 127H

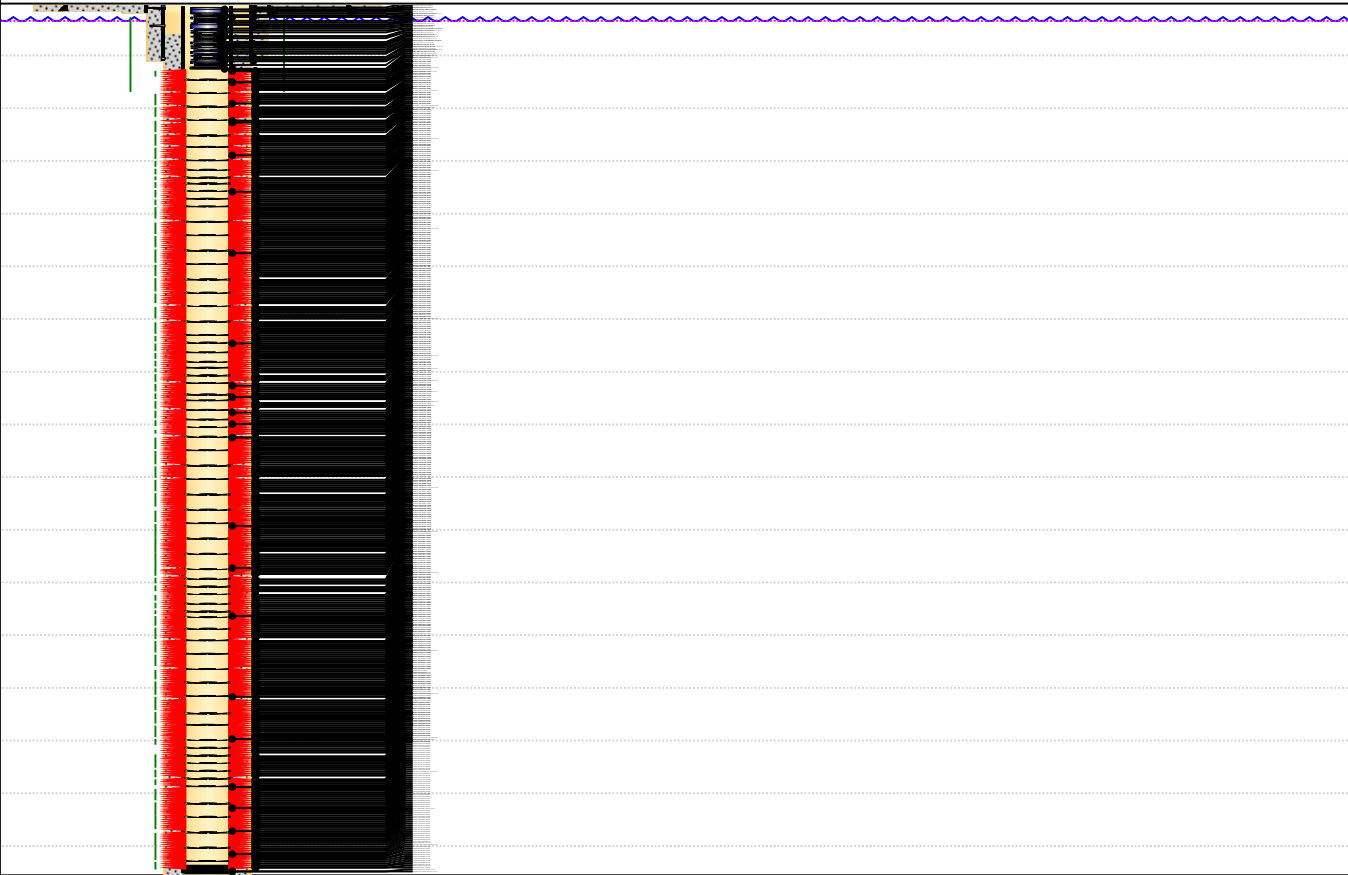
API/UWI 3001545539	SAP Cost Center ID 1667161001	Permit Number BLM	State/Province New Mexico	County Eddy			
Surface Location T25S-R31E-S28		Spud Date 1/24/2020 08:00	Original KB Elevation (ft) 3,370.00	Ground Elevation (ft) 3,338.00	KB-Ground Distance (ft) 32.00	Surface Casing Flange Elevatio...	-1.20

Horizontal, Original Hole, 2/1/2021 9:52:57 AM

Vertical schematic (actual)

MD (ftKB)

10,211.3  
12,946.9  
13,994.1  
14,977.0  
15,547.9  
16,436.0  
17,483.9  
18,438.0  
19,081.0  
19,692.9  
20,719.2  
21,619.1  
22,183.1  
23,238.8  
24,211.9  
24,776.9



### Perforations

Top (ftKB)	Btm (ftKB)	Current Status
20,670.0	20,671.0	Active (20,670.0 - 20,671.0 ftKB)
20,694.0	20,695.0	Active (20,694.0 - 20,695.0 ftKB)
20,719.0	20,720.0	Active (20,719.0 - 20,720.0 ftKB)
20,743.0	20,744.0	Active (20,743.0 - 20,744.0 ftKB)
20,767.0	20,768.0	Active (20,767.0 - 20,768.0 ftKB)
20,792.0	20,793.0	Active (20,792.0 - 20,793.0 ftKB)
20,816.0	20,817.0	Active (20,816.0 - 20,817.0 ftKB)
20,840.0	20,841.0	Active (20,840.0 - 20,841.0 ftKB)
20,864.0	20,865.0	Active (20,864.0 - 20,865.0 ftKB)
20,889.0	20,890.0	Active (20,889.0 - 20,890.0 ftKB)
20,911.0	20,912.0	Active (20,911.0 - 20,912.0 ftKB)
20,937.0	20,938.0	Active (20,937.0 - 20,938.0 ftKB)
20,963.0	20,964.0	Active (20,963.0 - 20,964.0 ftKB)
20,986.0	20,987.0	Active (20,986.0 - 20,987.0 ftKB)
21,010.0	21,011.0	Active (21,010.0 - 21,011.0 ftKB)
21,030.0	21,031.0	Active (21,030.0 - 21,031.0 ftKB)
21,059.0	21,060.0	Active (21,059.0 - 21,060.0 ftKB)
21,083.0	21,084.0	Active (21,083.0 - 21,084.0 ftKB)
21,107.0	21,108.0	Active (21,107.0 - 21,108.0 ftKB)
21,132.0	21,133.0	Active (21,132.0 - 21,133.0 ftKB)
21,156.0	21,157.0	Active (21,156.0 - 21,157.0 ftKB)



# Wellbore Diagram - RRC

## Well Name: POKER LAKE UNIT 28 BS 127H

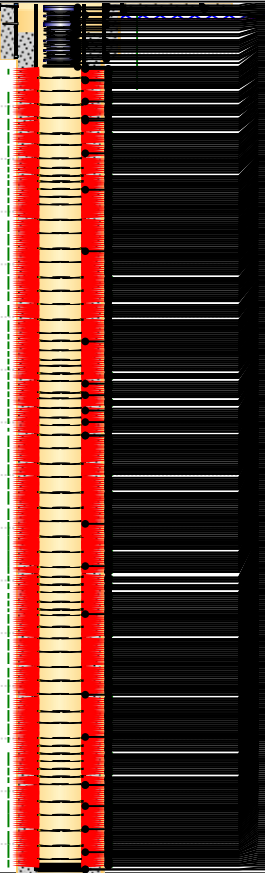
API/UWI 3001545539	SAP Cost Center ID 1667161001	Permit Number BLM	State/Province New Mexico	County Eddy			
Surface Location T25S-R31E-S28		Spud Date 1/24/2020 08:00	Original KB Elevation (ft) 3,370.00	Ground Elevation (ft) 3,338.00	KB-Ground Distance (ft) 32.00	Surface Casing Flange Elevatio...	-1.20

Horizontal, Original Hole, 2/1/2021 9:52:58 AM

Vertical schematic (actual)

MD (ftKB)

10,211.3  
12,946.9  
13,994.1  
14,977.0  
15,547.9  
16,436.0  
17,483.9  
18,438.0  
19,081.0  
19,692.9  
20,719.2  
21,619.1  
22,183.1  
23,238.8  
24,211.9  
24,776.9



### Perforations

Top (ftKB)	Btm (ftKB)	Current Status
21,178.0	21,179.0	Active (21,178.0 - 21,179.0 ftKB)
21,229.0	21,230.0	Active (21,229.0 - 21,230.0 ftKB)
21,253.0	21,254.0	Active (21,253.0 - 21,254.0 ftKB)
21,278.0	21,279.0	Active (21,278.0 - 21,279.0 ftKB)
21,302.0	21,303.0	Active (21,302.0 - 21,303.0 ftKB)
21,395.0	21,396.0	Active (21,395.0 - 21,396.0 ftKB)
21,407.0	21,408.0	Active (21,407.0 - 21,408.0 ftKB)
21,419.0	21,420.0	Active (21,419.0 - 21,420.0 ftKB)
21,431.0	21,432.0	Active (21,431.0 - 21,432.0 ftKB)
21,443.0	21,445.0	Active (21,443.0 - 21,445.0 ftKB)
21,455.0	21,456.0	Active (21,455.0 - 21,456.0 ftKB)
21,467.0	21,468.0	Active (21,467.0 - 21,468.0 ftKB)
21,479.0	21,480.0	Active (21,479.0 - 21,480.0 ftKB)
21,491.0	21,492.0	Active (21,491.0 - 21,492.0 ftKB)
21,511.0	21,512.0	Active (21,511.0 - 21,512.0 ftKB)
21,523.0	21,524.0	Active (21,523.0 - 21,524.0 ftKB)
21,559.0	21,560.0	Active (21,559.0 - 21,560.0 ftKB)
21,571.0	21,572.0	Active (21,571.0 - 21,572.0 ftKB)
21,583.0	21,584.0	Active (21,583.0 - 21,584.0 ftKB)
21,595.0	21,596.0	Active (21,595.0 - 21,596.0 ftKB)
21,607.0	21,608.0	Active (21,607.0 - 21,608.0 ftKB)



# Wellbore Diagram - RRC

## Well Name: POKER LAKE UNIT 28 BS 127H

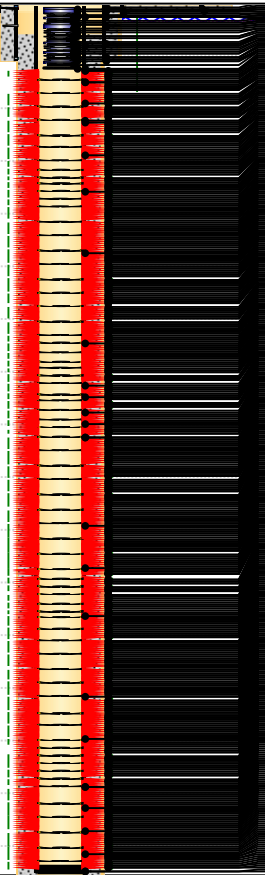
API/UWI 3001545539	SAP Cost Center ID 1667161001	Permit Number BLM	State/Province New Mexico	County Eddy	Ground Elevation (ft) 3,338.00	KB-Ground Distance (ft) 32.00	Surface Casing Flange Elevatio... -1.20
Surface Location T25S-R31E-S28	Spud Date 1/24/2020 08:00	Original KB Elevation (ft) 3,370.00					

Horizontal, Original Hole, 2/1/2021 9:52:59 AM

Vertical schematic (actual)

MD (ftKB)

10,211.3  
12,946.9  
13,994.1  
14,977.0  
15,547.9  
16,436.0  
17,483.9  
18,438.0  
19,081.0  
19,692.9  
20,719.2  
21,619.1  
22,183.1  
23,238.8  
24,211.9  
24,776.9



### Perforations

Top (ftKB)	Btm (ftKB)	Current Status
21,619.0	21,620.0	Active (21,619.0 - 21,620.0 ftKB)
21,629.0	21,630.0	Active (21,629.0 - 21,630.0 ftKB)
21,637.0	21,638.0	Active (21,637.0 - 21,638.0 ftKB)
21,664.0	21,665.0	Active (21,664.0 - 21,665.0 ftKB)
21,673.0	21,674.0	Active (21,673.0 - 21,674.0 ftKB)
21,688.0	21,689.0	Active (21,688.0 - 21,689.0 ftKB)
21,700.0	21,701.0	Active (21,700.0 - 21,701.0 ftKB)
21,712.0	21,713.0	Active (21,712.0 - 21,713.0 ftKB)
21,726.0	21,727.0	Active (21,726.0 - 21,727.0 ftKB)
21,736.0	21,737.0	Active (21,736.0 - 21,737.0 ftKB)
21,748.0	21,749.0	Active (21,748.0 - 21,749.0 ftKB)
21,760.0	21,761.0	Active (21,760.0 - 21,761.0 ftKB)
21,772.0	21,773.0	Active (21,772.0 - 21,773.0 ftKB)
21,784.0	21,785.0	Active (21,784.0 - 21,785.0 ftKB)
21,796.0	21,797.0	Active (21,796.0 - 21,797.0 ftKB)
21,816.0	21,817.0	Active (21,816.0 - 21,817.0 ftKB)
21,828.0	21,829.0	Active (21,828.0 - 21,829.0 ftKB)
21,840.0	21,841.0	Active (21,840.0 - 21,841.0 ftKB)
21,852.0	21,853.0	Active (21,852.0 - 21,853.0 ftKB)
21,864.0	21,865.0	Active (21,864.0 - 21,865.0 ftKB)
21,876.0	21,877.0	Active (21,876.0 - 21,877.0 ftKB)





# Wellbore Diagram - RRC

## Well Name: POKER LAKE UNIT 28 BS 127H

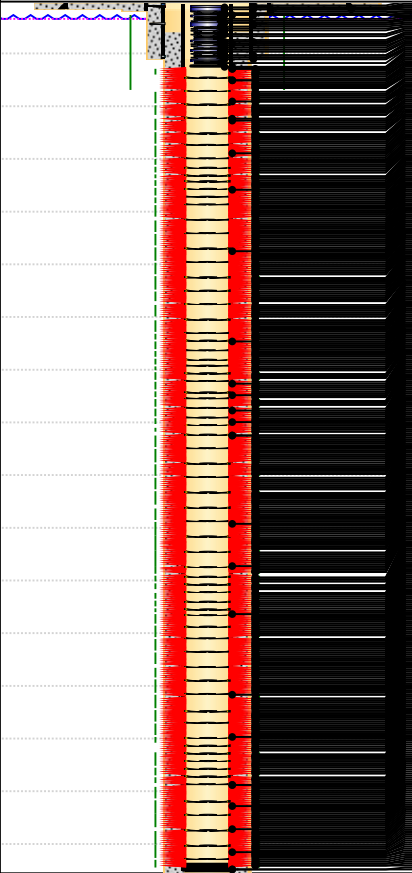
API/UWI 3001545539	SAP Cost Center ID 1667161001	Permit Number BLM	State/Province New Mexico	County Eddy	Ground Elevation (ft) 3,338.00	KB-Ground Distance (ft) 32.00	Surface Casing Flange Elevatio... -1.20
Surface Location T25S-R31E-S28	Spud Date 1/24/2020 08:00	Original KB Elevation (ft) 3,370.00					

Horizontal, Original Hole, 2/1/2021 9:53:00 AM

Vertical schematic (actual)

MD (ftKB)

10,211.3  
12,946.9  
13,994.1  
14,977.0  
15,547.9  
16,436.0  
17,483.9  
18,438.0  
19,081.0  
19,692.9  
20,719.2  
21,619.1  
22,183.1  
23,238.8  
24,211.9  
24,776.9



### Perforations

Top (ftKB)	Btm (ftKB)	Current Status
21,889.0	21,890.0	Active (21,889.0 - 21,890.0 ftKB)
21,901.0	21,902.0	Active (21,901.0 - 21,902.0 ftKB)
21,913.0	21,914.0	Active (21,913.0 - 21,914.0 ftKB)
21,925.0	21,926.0	Active (21,925.0 - 21,926.0 ftKB)
21,937.0	21,938.0	Active (21,937.0 - 21,938.0 ftKB)
21,949.0	21,950.0	Active (21,949.0 - 21,950.0 ftKB)
21,969.0	21,970.0	Active (21,969.0 - 21,970.0 ftKB)
21,981.0	21,982.0	Active (21,981.0 - 21,982.0 ftKB)
21,993.0	21,994.0	Active (21,993.0 - 21,994.0 ftKB)
22,017.0	22,018.0	Active (22,017.0 - 22,018.0 ftKB)
22,029.0	22,030.0	Active (22,029.0 - 22,030.0 ftKB)
22,041.0	22,042.0	Active (22,041.0 - 22,042.0 ftKB)
22,053.0	22,054.0	Active (22,053.0 - 22,054.0 ftKB)
22,065.0	22,066.0	Active (22,065.0 - 22,066.0 ftKB)
22,077.0	22,078.0	Active (22,077.0 - 22,078.0 ftKB)
22,089.0	22,090.0	Active (22,089.0 - 22,090.0 ftKB)
22,101.0	22,102.0	Active (22,101.0 - 22,102.0 ftKB)
22,121.0	22,122.0	Active (22,121.0 - 22,122.0 ftKB)
22,133.0	22,134.0	Active (22,133.0 - 22,134.0 ftKB)
22,146.0	22,147.0	Active (22,146.0 - 22,147.0 ftKB)
22,158.0	22,159.0	Active (22,158.0 - 22,159.0 ftKB)



# Wellbore Diagram - RRC

## Well Name: POKER LAKE UNIT 28 BS 127H

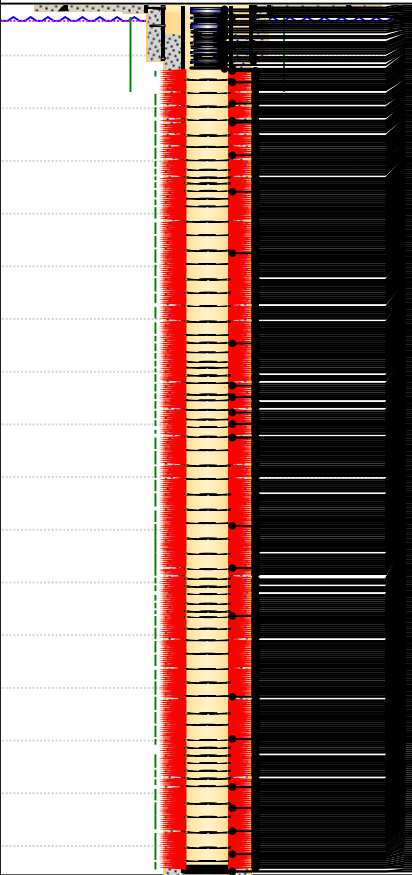
API/UWI 3001545539	SAP Cost Center ID 1667161001	Permit Number BLM	State/Province New Mexico	County Eddy			
Surface Location T25S-R31E-S28		Spud Date 1/24/2020 08:00	Original KB Elevation (ft) 3,370.00	Ground Elevation (ft) 3,338.00	KB-Ground Distance (ft) 32.00	Surface Casing Flange Elevatio...	-1.20

Horizontal, Original Hole, 2/1/2021 9:53:01 AM

Vertical schematic (actual)

MD (ftKB)

10,211.3  
12,946.9  
13,994.1  
14,977.0  
15,547.9  
16,436.0  
17,483.9  
18,438.0  
19,081.0  
19,692.9  
20,719.2  
21,619.1  
22,183.1  
23,238.8  
24,211.9  
24,776.9



### Perforations

Top (ftKB)	Btm (ftKB)	Current Status
22,170.0	22,171.0	Active (22,170.0 - 22,171.0 ftKB)
22,182.0	22,183.0	Active (22,182.0 - 22,183.0 ftKB)
22,194.0	22,195.0	Active (22,194.0 - 22,195.0 ftKB)
22,206.0	22,207.0	Active (22,206.0 - 22,207.0 ftKB)
22,218.0	22,219.0	Active (22,218.0 - 22,219.0 ftKB)
22,230.0	22,231.0	Active (22,230.0 - 22,231.0 ftKB)
22,242.0	22,243.0	Active (22,242.0 - 22,243.0 ftKB)
22,254.0	22,255.0	Active (22,254.0 - 22,255.0 ftKB)
22,287.0	22,288.0	Active (22,287.0 - 22,288.0 ftKB)
22,313.0	22,314.0	Active (22,313.0 - 22,314.0 ftKB)
22,338.0	22,339.0	Active (22,338.0 - 22,339.0 ftKB)
22,364.0	22,365.0	Active (22,364.0 - 22,365.0 ftKB)
22,390.0	22,391.0	Active (22,390.0 - 22,391.0 ftKB)
22,414.0	22,415.0	Active (22,414.0 - 22,415.0 ftKB)
22,441.0	22,442.0	Active (22,441.0 - 22,442.0 ftKB)
22,467.0	22,468.0	Active (22,467.0 - 22,468.0 ftKB)
22,493.0	22,494.0	Active (22,493.0 - 22,494.0 ftKB)
22,518.0	22,519.0	Active (22,518.0 - 22,519.0 ftKB)
22,544.0	22,545.0	Active (22,544.0 - 22,545.0 ftKB)
22,570.0	22,571.0	Active (22,570.0 - 22,571.0 ftKB)
22,595.0	22,596.0	Active (22,595.0 - 22,596.0 ftKB)





# Wellbore Diagram - RRC

## Well Name: POKER LAKE UNIT 28 BS 127H

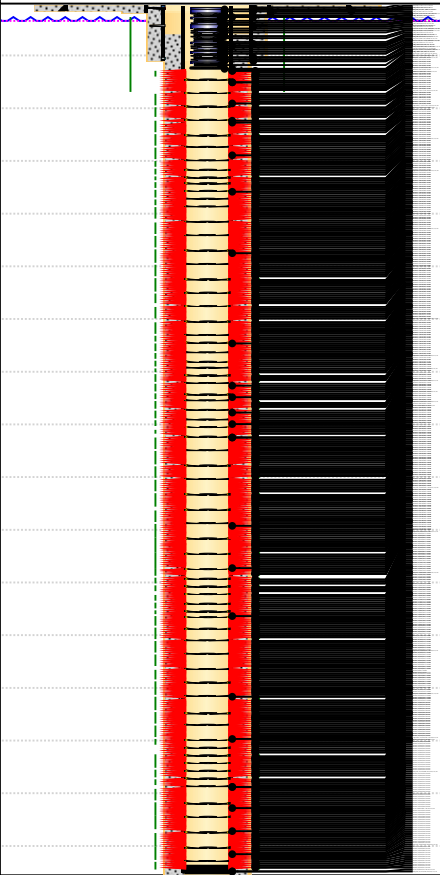
API/UWI 3001545539	SAP Cost Center ID 1667161001	Permit Number BLM	State/Province New Mexico	County Eddy	Ground Elevation (ft) 3,338.00	KB-Ground Distance (ft) 32.00	Surface Casing Flange Elevatio... -1.20
Surface Location T25S-R31E-S28	Spud Date 1/24/2020 08:00	Original KB Elevation (ft) 3,370.00					

Horizontal, Original Hole, 2/1/2021 9:53:02 AM

Vertical schematic (actual)

MD (ftKB)

10,211.3  
12,946.9  
13,994.1  
14,977.0  
15,547.9  
16,436.0  
17,483.9  
18,438.0  
19,081.0  
19,692.9  
20,719.2  
21,619.1  
22,183.1  
23,238.8  
24,211.9  
24,776.9



### Perforations

Top (ftKB)	Btm (ftKB)	Current Status
22,621.0	22,622.0	Active (22,621.0 - 22,622.0 ftKB)
22,647.0	22,648.0	Active (22,647.0 - 22,648.0 ftKB)
22,673.0	22,674.0	Active (22,637.0 - 22,674.0 ftKB)
22,698.0	22,698.0	Active (22,698.0 - 22,699.0 ftKB)
22,724.0	22,724.0	Active (22,724.0 - 22,725.0 ftKB)
22,750.0	22,751.0	Active (22,750.0 - 22,751.0 ftKB)
22,775.0	22,776.0	Active (22,775.0 - 22,776.0 ftKB)
22,801.0	22,802.0	Active (22,801.0 - 22,802.0 ftKB)
22,827.0	22,828.0	Active (22,827.0 - 22,828.0 ftKB)
22,852.0	22,853.0	Active (22,852.0 - 22,853.0 ftKB)
22,878.0	22,879.0	Active (22,878.0 - 22,879.0 ftKB)
22,904.0	22,905.0	Active (22,904.0 - 22,905.0 ftKB)
22,930.0	22,931.0	Active (22,930.0 - 22,931.0 ftKB)
22,955.0	22,981.0	Active (22,955.0 - 22,981.0 ftKB)
22,981.0	22,982.0	Active (22,981.0 - 22,982.0 ftKB)
23,007.0	23,008.0	Active (23,007.0 - 23,008.0 ftKB)
23,032.0	23,033.0	Active (23,032.0 - 23,033.0 ftKB)
23,058.0	23,059.0	Active (23,058.0 - 23,059.0 ftKB)
23,084.0	23,085.0	Active (23,084.0 - 23,085.0 ftKB)
23,109.0	23,110.0	Active (23,109.0 - 23,110.0 ftKB)
23,135.0	23,136.0	Active (23,135.0 - 23,136.0 ftKB)



# Wellbore Diagram - RRC

## Well Name: POKER LAKE UNIT 28 BS 127H

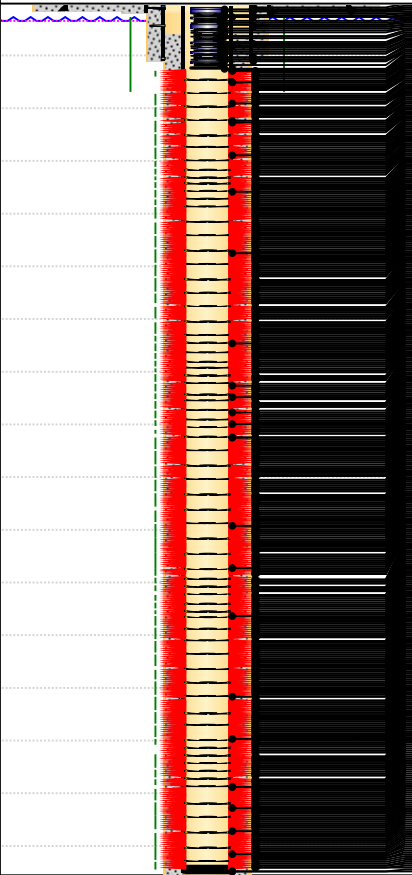
API/UWI 3001545539	SAP Cost Center ID 1667161001	Permit Number BLM	State/Province New Mexico	County Eddy			
Surface Location T25S-R31E-S28		Spud Date 1/24/2020 08:00	Original KB Elevation (ft) 3,370.00	Ground Elevation (ft) 3,338.00	KB-Ground Distance (ft) 32.00	Surface Casing Flange Elevatio...	-1.20

Horizontal, Original Hole, 2/1/2021 9:53:03 AM

Vertical schematic (actual)

MD (ftKB)

10,211.3  
12,946.9  
13,994.1  
14,977.0  
15,547.9  
16,436.0  
17,483.9  
18,438.0  
19,081.0  
19,692.9  
20,719.2  
21,619.1  
22,183.1  
23,238.8  
24,211.9  
24,776.9



### Perforations

Top (ftKB)	Btm (ftKB)	Current Status
23,161.0	23,162.0	Active (23,161.0 - 23,162.0 ftKB)
23,187.0	23,188.0	Active (23,187.0 - 23,188.0 ftKB)
23,212.0	23,213.0	Active (23,212.0 - 23,213.0 ftKB)
23,238.0	23,239.0	Active (23,238.0 - 23,239.0 ftKB)
23,264.0	23,265.0	Active (23,264.0 - 23,265.0 ftKB)
23,289.0	23,290.0	Active (23,289.0 - 23,290.0 ftKB)
23,315.0	23,316.0	Active (23,315.0 - 23,316.0 ftKB)
23,341.0	23,342.0	Active (23,341.0 - 23,342.0 ftKB)
23,366.0	23,367.0	Active (23,366.0 - 23,367.0 ftKB)
23,392.0	23,393.0	Active (23,392.0 - 23,393.0 ftKB)
23,418.0	23,419.0	Active (23,418.0 - 23,419.0 ftKB)
23,444.0	23,445.0	Active (23,444.0 - 23,445.0 ftKB)
23,469.0	23,470.0	Active (23,469.0 - 23,470.0 ftKB)
23,496.0	23,497.0	Active (23,496.0 - 23,497.0 ftKB)
23,521.0	23,522.0	Active (23,521.0 - 23,522.0 ftKB)
23,546.0	23,547.0	Active (23,546.0 - 23,547.0 ftKB)
23,572.0	23,573.0	Active (23,572.0 - 23,573.0 ftKB)
23,598.0	23,599.0	Active (23,598.0 - 23,599.0 ftKB)
23,623.0	23,624.0	Active (23,623.0 - 23,624.0 ftKB)
23,649.0	23,650.0	Active (23,649.0 - 23,650.0 ftKB)
23,675.0	23,676.0	Active (23,675.0 - 23,676.0 ftKB)



# Wellbore Diagram - RRC

## Well Name: POKER LAKE UNIT 28 BS 127H

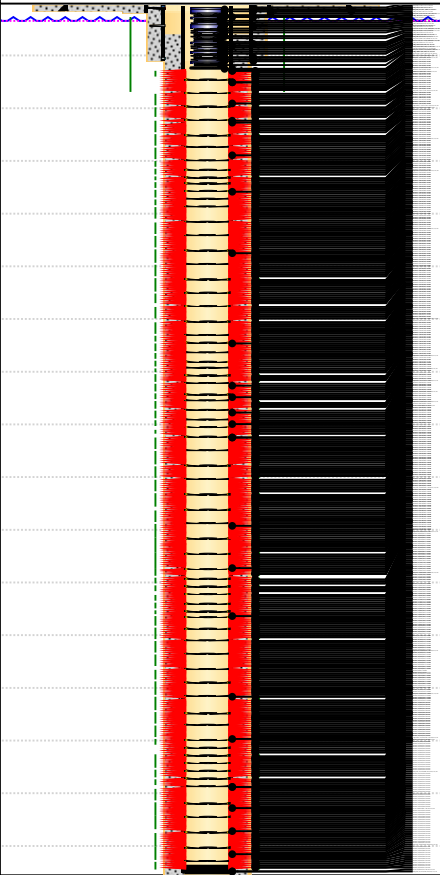
API/UWI 3001545539	SAP Cost Center ID 1667161001	Permit Number BLM	State/Province New Mexico	County Eddy			
Surface Location T25S-R31E-S28		Spud Date 1/24/2020 08:00	Original KB Elevation (ft) 3,370.00	Ground Elevation (ft) 3,338.00	KB-Ground Distance (ft) 32.00	Surface Casing Flange Elevatio...	-1.20

Horizontal, Original Hole, 2/1/2021 9:53:04 AM

Vertical schematic (actual)

MD (ftKB)

10,211.3  
12,946.9  
13,994.1  
14,977.0  
15,547.9  
16,436.0  
17,483.9  
18,438.0  
19,081.0  
19,692.9  
20,719.2  
21,619.1  
22,183.1  
23,238.8  
24,211.9  
24,776.9



### Perforations

Top (ftKB)	Btm (ftKB)	Current Status
23,701.0	23,702.0	Active (23,701.0 - 23,702.0 ftKB)
23,726.0	23,727.0	Active (23,726.0 - 23,727.0 ftKB)
23,752.0	23,753.0	Active (23,752.0 - 23,753.0 ftKB)
23,778.0	23,779.0	Active (23,778.0 - 23,779.0 ftKB)
23,803.0	23,804.0	Active (23,803.0 - 23,804.0 ftKB)
23,829.0	23,830.0	Active (23,829.0 - 23,830.0 ftKB)
23,855.0	23,856.0	Active (23,855.0 - 23,856.0 ftKB)
23,880.0	23,881.0	Active (23,880.0 - 23,881.0 ftKB)
23,906.0	23,907.0	Active (23,906.0 - 23,907.0 ftKB)
23,932.0	23,933.0	Active (23,932.0 - 23,933.0 ftKB)
23,958.0	23,959.0	Active (23,958.0 - 23,959.0 ftKB)
23,981.0	23,982.0	Active (23,982.0 - 24,112.0 ftKB)
24,008.0	24,009.0	Active (24,009.0 - 24,008.0 ftKB)
24,034.0	24,035.0	Active (24,035.0 - 24,034.0 ftKB)
24,059.0	24,060.0	Active (24,060.0 - 24,059.0 ftKB)
24,085.0	24,086.0	Active (24,086.0 - 24,085.0 ftKB)
24,111.0	24,112.0	Active (24,111.0 - 24,112.0 ftKB)
24,151.0	24,152.0	Active (24,151.0 - 24,152.0 ftKB)
24,164.0	24,165.0	Active (24,164.0 - 24,165.0 ftKB)
24,176.0	24,177.0	Active (24,176.0 - 24,177.0 ftKB)
24,188.0	24,189.0	Active (24,188.0 - 24,189.0 ftKB)



# Wellbore Diagram - RRC

## Well Name: POKER LAKE UNIT 28 BS 127H

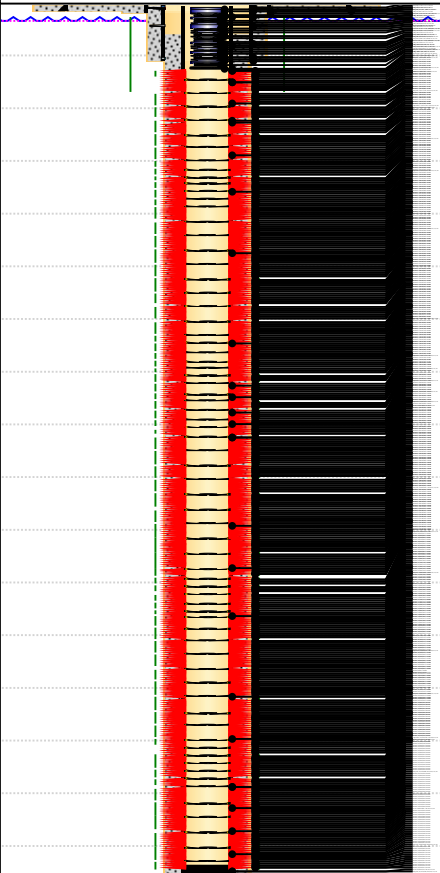
API/UWI 3001545539	SAP Cost Center ID 1667161001	Permit Number BLM	State/Province New Mexico	County Eddy			
Surface Location T25S-R31E-S28		Spud Date 1/24/2020 08:00	Original KB Elevation (ft) 3,370.00	Ground Elevation (ft) 3,338.00	KB-Ground Distance (ft) 32.00	Surface Casing Flange Elevatio...	-1.20

Horizontal, Original Hole, 2/1/2021 9:53:05 AM

Vertical schematic (actual)

MD (ftKB)

10,211.3  
12,946.9  
13,994.1  
14,977.0  
15,547.9  
16,436.0  
17,483.9  
18,438.0  
19,081.0  
19,692.9  
20,719.2  
21,619.1  
22,183.1  
23,238.8  
24,211.9  
24,776.9



### Perforations

Top (ftKB)	Btm (ftKB)	Current Status
24,200.0	24,201.0	Active (24,200.0 - 24,201.0 ftKB)
24,212.0	24,213.0	Active (24,212.0 - 24,213.0 ftKB)
24,224.0	24,225.0	Active (24,224.0 - 24,225.0 ftKB)
24,236.0	24,237.0	Active (24,236.0 - 24,237.0 ftKB)
24,248.0	24,249.0	Active (24,248.0 - 24,249.0 ftKB)
24,260.0	24,261.0	Active (24,260.0 - 24,261.0 ftKB)
24,272.0	24,273.0	Active (24,272.0 - 24,273.0 ftKB)
24,285.0	24,286.0	Active (24,285.0 - 24,286.0 ftKB)
24,305.0	24,306.0	Active (24,305.0 - 24,306.0 ftKB)
24,313.0	24,314.0	Active (24,313.0 - 24,314.0 ftKB)
24,327.0	24,328.0	Active (24,327.0 - 24,328.0 ftKB)
24,343.0	24,344.0	Active (24,343.0 - 24,344.0 ftKB)
24,353.0	24,354.0	Active (24,353.0 - 24,354.0 ftKB)
24,365.0	24,366.0	Active (24,365.0 - 24,366.0 ftKB)
24,377.0	24,378.0	Active (24,377.0 - 24,378.0 ftKB)
24,389.0	24,390.0	Active (24,389.0 - 24,390.0 ftKB)
24,401.0	24,402.0	Active (24,401.0 - 24,402.0 ftKB)
24,414.0	24,415.0	Active (24,414.0 - 24,415.0 ftKB)
24,426.0	24,427.0	Active (24,426.0 - 24,427.0 ftKB)
24,438.0	24,439.0	Active (24,438.0 - 24,439.0 ftKB)
24,458.0	24,459.0	Active (24,458.0 - 24,459.0 ftKB)



# Wellbore Diagram - RRC

## Well Name: POKER LAKE UNIT 28 BS 127H

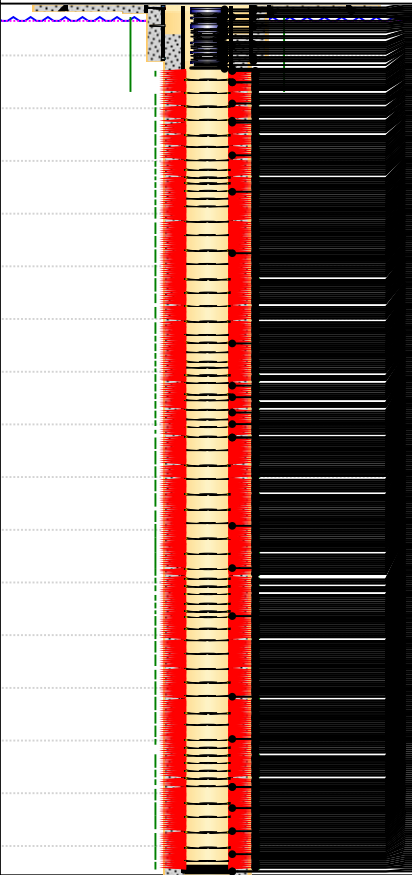
API/UWI 3001545539	SAP Cost Center ID 1667161001	Permit Number BLM	State/Province New Mexico	County Eddy			
Surface Location T25S-R31E-S28		Spud Date 1/24/2020 08:00	Original KB Elevation (ft) 3,370.00	Ground Elevation (ft) 3,338.00	KB-Ground Distance (ft) 32.00	Surface Casing Flange Elevatio...	-1.20

Horizontal, Original Hole, 2/1/2021 9:53:06 AM

Vertical schematic (actual)

MD (ftKB)

10,211.3  
12,946.9  
13,994.1  
14,977.0  
15,547.9  
16,436.0  
17,483.9  
18,438.0  
19,081.0  
19,692.9  
20,719.2  
21,619.1  
22,183.1  
23,238.8  
24,211.9  
24,776.9



### Perforations

Top (ftKB)	Btm (ftKB)	Current Status
24,468.0	24,469.0	Active (24,468.0 - 24,469.0 ftKB)
24,482.0	24,483.0	Active (24,482.0 - 24,483.0 ftKB)
24,494.0	24,495.0	Active (24,494.0 - 24,495.0 ftKB)
24,506.0	24,507.0	Active (24,506.0 - 24,507.0 ftKB)
24,518.0	24,519.0	Active (24,518.0 - 24,519.0 ftKB)
24,530.0	24,531.0	Active (24,530.0 - 24,531.0 ftKB)
24,543.0	24,544.0	Active (24,543.0 - 24,544.0 ftKB)
24,555.0	24,556.0	Active (24,555.0 - 24,556.0 ftKB)
24,567.0	24,568.0	Active (24,567.0 - 24,568.0 ftKB)
24,573.0	24,574.0	Active (24,573.0 - 24,574.0 ftKB)
24,591.0	24,592.0	Active (24,591.0 - 24,592.0 ftKB)
24,631.0	24,632.0	Active (24,631.0 - 24,632.0 ftKB)
24,642.0	24,643.0	Active (24,642.0 - 24,643.0 ftKB)
24,654.0	24,655.0	Active (24,654.0 - 24,655.0 ftKB)
24,667.0	24,668.0	Active (24,667.0 - 24,668.0 ftKB)
24,679.0	24,680.0	Active (24,679.0 - 24,680.0 ftKB)
24,692.0	24,693.0	Active (24,692.0 - 24,693.0 ftKB)
24,704.0	24,705.0	Active (24,704.0 - 24,705.0 ftKB)
24,719.0	24,720.0	Active (24,719.0 - 24,720.0 ftKB)
24,729.0	24,730.0	Active (24,729.0 - 24,730.0 ftKB)
24,742.0	24,743.0	Active (24,742.0 - 24,743.0 ftKB)



# Wellbore Diagram - RRC

## Well Name: POKER LAKE UNIT 28 BS 127H

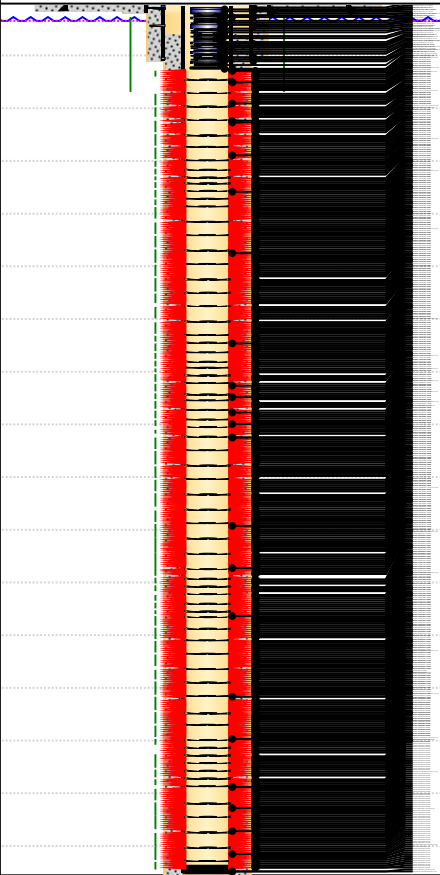
API/UWI 3001545539	SAP Cost Center ID 1667161001	Permit Number BLM	State/Province New Mexico	County Eddy	Ground Elevation (ft) 3,338.00	KB-Ground Distance (ft) 32.00	Surface Casing Flange Elevatio... -1.20
Surface Location T25S-R31E-S28	Spud Date 1/24/2020 08:00	Original KB Elevation (ft) 3,370.00					

Horizontal, Original Hole, 2/1/2021 9:53:07 AM

Vertical schematic (actual)

MD (ftKB)

10,211.3  
12,946.9  
13,994.1  
14,977.0  
15,547.9  
16,436.0  
17,483.9  
18,438.0  
19,081.0  
19,692.9  
20,719.2  
21,619.1  
22,183.1  
23,238.8  
24,211.9  
24,776.9



### Perforations

Top (ftKB)	Btm (ftKB)	Current Status
24,754.0	24,755.0	Active (24,754.0 - 24,755.0 ftKB)
24,767.0	24,768.0	Active (24,767.0 - 24,768.0 ftKB)
24,787.0	24,788.0	Active (24,787.0 - 24,788.0 ftKB)
24,800.0	24,801.0	Active (24,800.0 - 24,801.0 ftKB)
24,812.0	24,813.0	Active (24,812.0 - 24,813.0 ftKB)
24,825.0	24,826.0	Active (24,825.0 - 24,826.0 ftKB)
24,837.0	24,838.0	Active (24,837.0 - 24,838.0 ftKB)
24,850.0	24,851.0	Active (24,850.0 - 24,851.0 ftKB)
24,862.0	24,863.0	Active (24,862.0 - 24,863.0 ftKB)
24,875.0	24,876.0	Active (24,875.0 - 24,876.0 ftKB)
24,887.0	24,888.0	Active (24,887.0 - 24,888.0 ftKB)
24,900.0	24,901.0	Active (24,900.0 - 24,901.0 ftKB)
24,912.0	24,913.0	Active (24,912.0 - 24,913.0 ftKB)
24,925.0	24,926.0	Active (24,925.0 - 24,926.0 ftKB)
24,947.0	24,948.0	Active (24,947.0 - 24,948.0 ftKB)
24,970.0	24,971.0	Active (24,970.0 - 24,971.0 ftKB)
24,995.0	24,996.0	Active (24,995.0 - 24,996.0 ftKB)
25,020.0	25,021.0	Active (25,020.0 - 25,021.0 ftKB)
25,045.0	25,046.0	Active (25,045.0 - 25,046.0 ftKB)
25,070.0	25,071.0	Active (25,070.0 - 25,071.0 ftKB)

**District I**  
1625 N. French Dr., Hobbs, NM 88240  
Phone:(575) 393-6161 Fax:(575) 393-0720  
**District II**  
811 S. First St., Artesia, NM 88210  
Phone:(575) 748-1283 Fax:(575) 748-9720  
**District III**  
1000 Rio Brazos Rd., Aztec, NM 87410  
Phone:(505) 334-6178 Fax:(505) 334-6170  
**District IV**  
1220 S. St Francis Dr., Santa Fe, NM 87505  
Phone:(505) 476-3470 Fax:(505) 476-3462

**State of New Mexico**  
**Energy, Minerals and Natural Resources**  
**Oil Conservation Division**  
**1220 S. St Francis Dr.**  
**Santa Fe, NM 87505**

CONDITIONS  
  
Action 16481

CONDITIONS OF APPROVAL

Operator:	OGRID:	Action Number:	Action Type:
XTO PERMIAN OPERATING LLC. BUILDING 5 MIDLAND, TX79707	373075	16481	C-103T
6401 HOLIDAY HILL ROAD			
OCD Reviewer	Condition		
ksimmons	None		