

District I
1625 N. French Dr., Hobbs, NM 88240
Phone: (575) 393-6161 Fax: (575) 393-0720
District II
811 S. First St., Artesia, NM 88210
Phone: (575) 748-1283 Fax: (575) 748-9720
District III
1000 Rio Brazos Road, Aztec, NM 87410
Phone: (505) 334-6178 Fax: (505) 334-6170
District IV
1220 S. St. Francis Dr., Santa Fe, NM 87505
Phone: (505) 476-3460 Fax: (505) 476-3462

State of New Mexico
Energy, Minerals & Natural Resources Department
OIL CONSERVATION DIVISION
1220 South St. Francis Dr.
Santa Fe, NM 87505

Form C-102
Revised August 1, 2011
Submit one copy to appropriate
District Office
☐ AMENDED REPORT

WELL LOCATION AND ACREAGE DEDICATION PLAT

¹ API Number 30-025-48368	² Pool Code 98234	³ Pool Name WC-025 G-09 S263619C; WOLFCAMP
⁴ Property Code 328896	⁵ Property Name COMANCHE 25-36 FED STATE COM	⁶ Well Number 2Y
⁷ OGRID No. 249099	⁸ Operator Name CAZA OPERATING LLC	⁹ Elevation 2945'

¹⁰ Surface Location

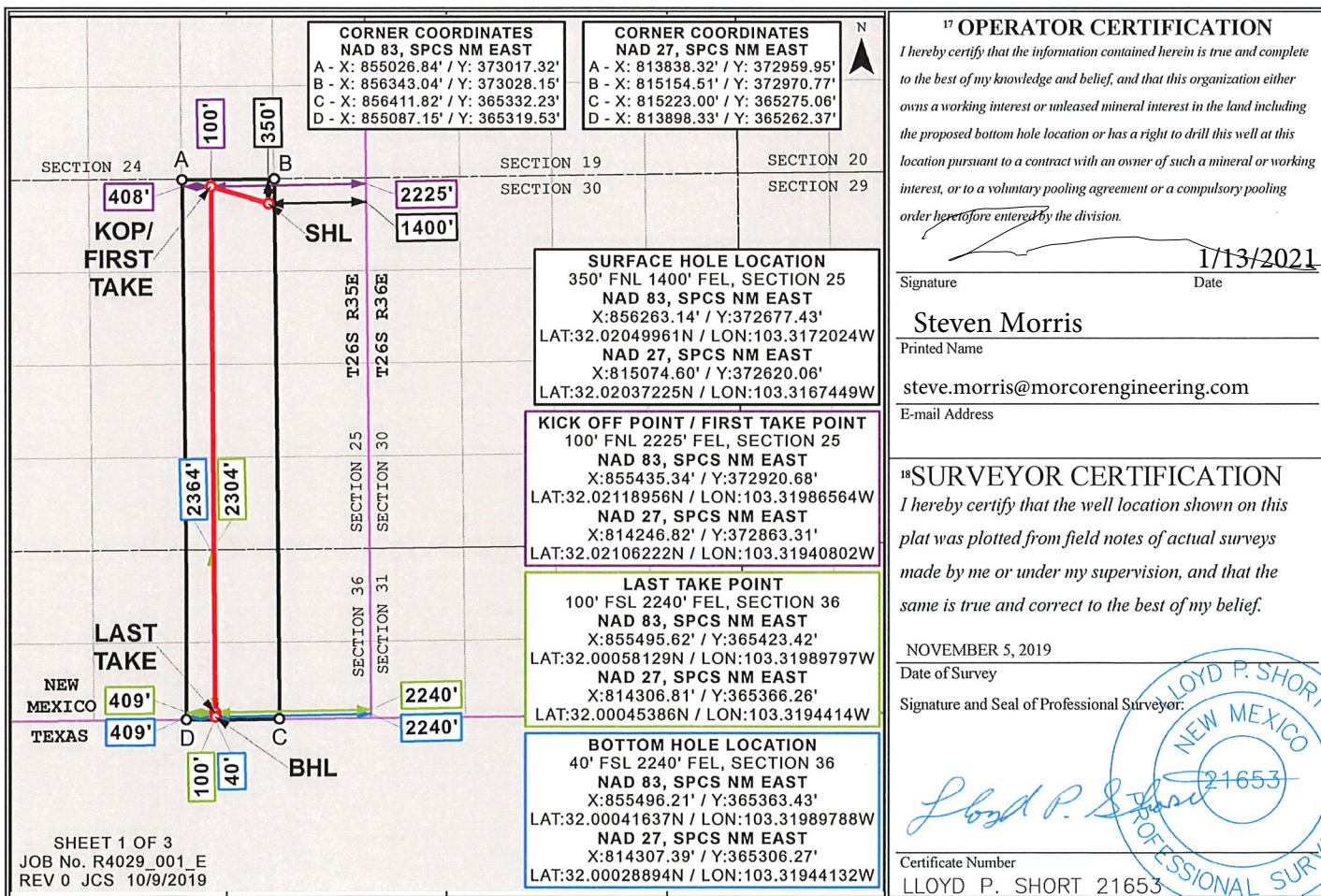
UL or lot no.	Section	Township	Range	Lot Idn	Feet from the	North/South line	Feet from the	East/West line	County
B	25	26S	35E		350	NORTH	1400	EAST	LEA

¹¹ Bottom Hole Location If Different From Surface

UL or lot no.	Section	Township	Range	Lot Idn	Feet from the	North/South line	Feet from the	East/West line	County
G (L 2)	36	26S	35E		40	SOUTH	2240	EAST	LEA

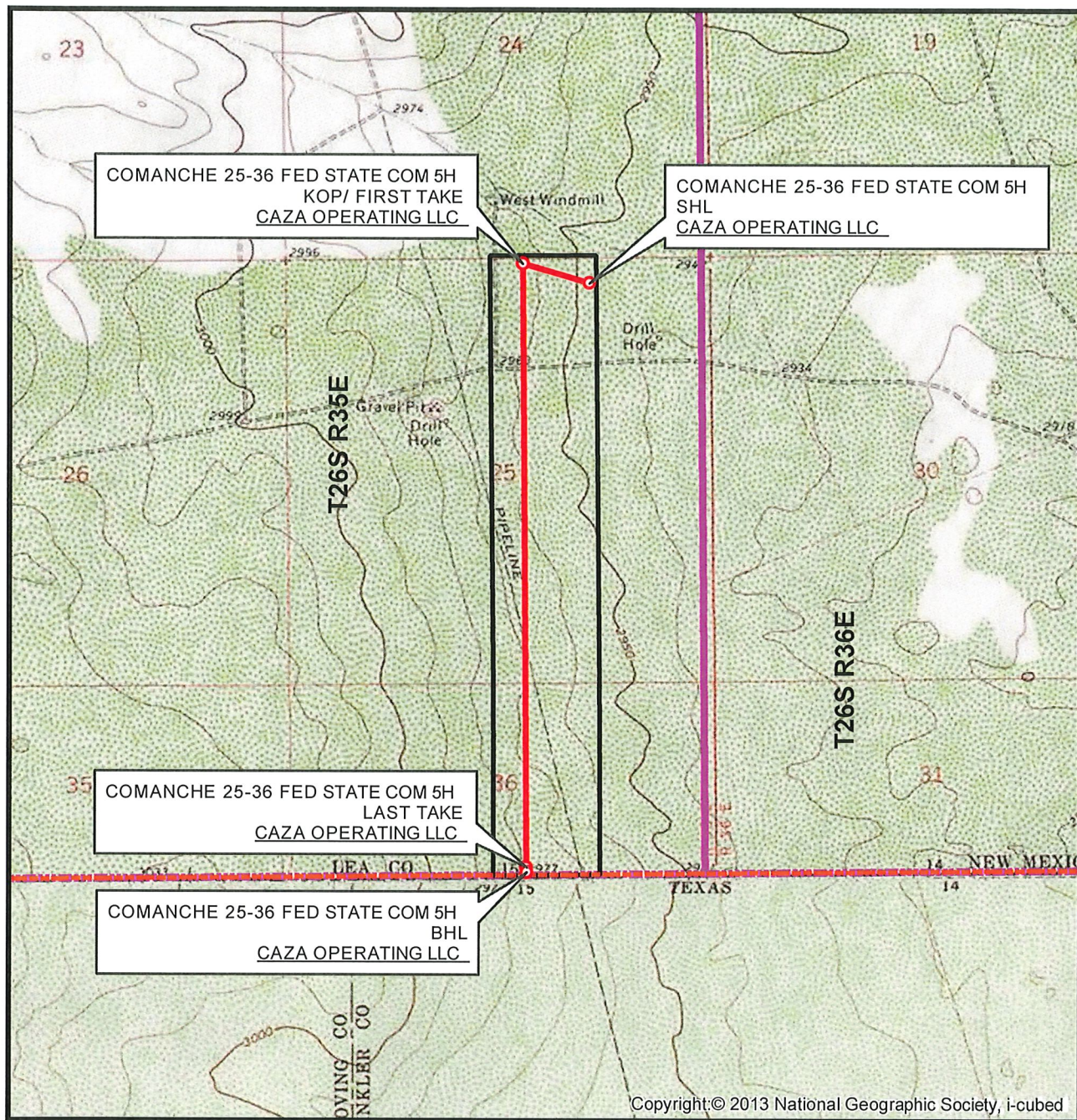
¹² Dedicated Acres 233.27	¹³ Joint or Infill	¹⁴ Consolidation Code	¹⁵ Order No.
---	-------------------------------	----------------------------------	-------------------------

No allowable will be assigned to this completion until all interests have been consolidated or a non-standard unit has been approved by the division.



Distances/areas relative to NAD 83 Combined Scale Factor: 0.99988291 Convergence: 00°32'08.45268"

LOCATION VERIFICATION MAP



SEC. 25 TWP. 26-S RGE. 35-E
 SURVEY: N.M.P.M.
 COUNTY: LEA
 OPERATOR: CAZA OPERATING LLC
 DESCRIPTION: 350' FNL & 1400' FEL
 ELEVATION: 2945'
 LEASE: COMANCHE 25-36 FED STATE COM
 U.S.G.S. TOPOGRAPHIC MAP: JAVELINA BASIN, NM, TX.

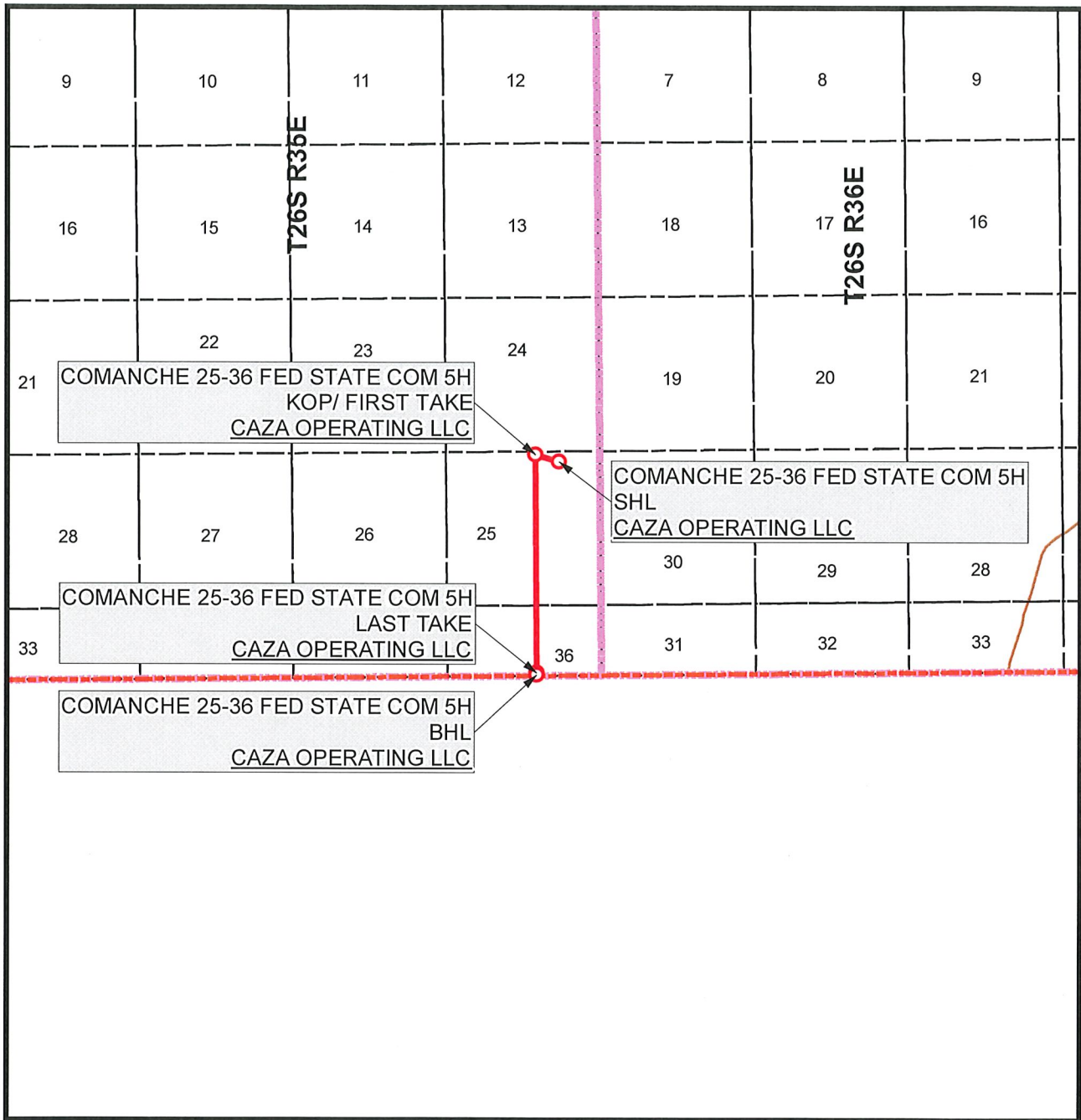
1" = 2,000'
 CONTOUR INTERVAL = 10'



SHEET 2 OF 3

PREPARED BY:
 R-SQUARED GLOBAL, LLC
 1309 LOUISVILLE AVENUE, MONROE, LA 71201
 318-323-6900 OFFICE
 JOB No. R4029_001_E

VICINITY MAP



SEC. 25 TWP. 26-S RGE. 35-E
 SURVEY: N.M.P.M.
 COUNTY: LEA
 OPERATOR: CAZA OPERATING LLC
 DESCRIPTION: 350' FNL & 1400' FEL
 ELEVATION: 2945'
 LEASE: COMANCHE 25-36 FED STATE COM
 U.S.G.S. TOPOGRAPHIC MAP: JAVELINA BASIN, NM,TX.

1" = 1 MILE



SHEET 3 OF 3

PREPARED BY:
 R-SQUARED GLOBAL, LLC
 1309 LOUISVILLE AVENUE, MONROE, LA 71201
 318-323-6900 OFFICE
 JOB No. R4029_001_E

District I
1625 N. French Dr., Hobbs, NM 88240
Phone:(575) 393-6161 Fax:(575) 393-0720
District II
811 S. First St., Artesia, NM 88210
Phone:(575) 748-1283 Fax:(575) 748-9720
District III
1000 Rio Brazos Rd., Aztec, NM 87410
Phone:(505) 334-6178 Fax:(505) 334-6170
District IV
1220 S. St Francis Dr., Santa Fe, NM 87505
Phone:(505) 476-3470 Fax:(505) 476-3462

State of New Mexico
Energy, Minerals and Natural Resources
Oil Conservation Division
1220 S. St Francis Dr.
Santa Fe, NM 87505

CONDITIONS

Action 14593

CONDITIONS OF APPROVAL

Operator:	OGRID:	Action Number:	Action Type:
CAZA OPERATING, LLC 200 N Loraine St Suite 1550 Midland, TX79701	249099	14593	C-102
OCD Reviewer	Condition		
pkautz	None		