

Submit a Copy To Appropriate District
Office
District I – (575) 393-6161
1625 N. French Dr., Hobbs, NM 88240
District II – (575) 748-1283
811 S. First St., Artesia, NM 88210
District III – (505) 334-6178
1000 Rio Brazos Rd., Aztec, NM 87410
District IV – (505) 476-3460
1220 S. St. Francis Dr., Santa Fe, NM
87505

State of New Mexico
Energy, Minerals and Natural Resources

Form C-103
Revised July 18, 2013

OIL CONSERVATION DIVISION
1220 South St. Francis Dr.
Santa Fe, NM 87505

WELL API NO. 30-025-34165
5. Indicate Type of Lease STATE <input checked="" type="checkbox"/> FEE <input type="checkbox"/>
6. State Oil & Gas Lease No.
7. Lease Name or Unit Agreement Name Enron 9 State Com
8. Well Number 1
9. OGRID Number 372043
10. Pool name or Wildcat Johnson Ranch Wolfcamp
4. Well Location Unit Letter O : 660 feet from the South line and 1980 feet from the East line Section 9 Township 24S Range 33E NMPM County LEA
11. Elevation (Show whether DR, RKB, RT, GR, etc.) 3612 GR

12. Check Appropriate Box to Indicate Nature of Notice, Report or Other Data

NOTICE OF INTENTION TO:

PERFORM REMEDIAL WORK ☒ PLUG AND ABANDON ☐
TEMPORARILY ABANDON ☒ CHANGE PLANS ☐
PULL OR ALTER CASING ☐ MULTIPLE COMPL ☐
DOWNHOLE COMMINGLE ☐
CLOSED-LOOP SYSTEM ☐
OTHER: ☐

SUBSEQUENT REPORT OF:

REMEDIAL WORK ☐ ALTERING CASING ☐
COMMENCE DRILLING OPNS. ☐ P AND A ☐
CASING/CEMENT JOB ☐
OTHER: ☐

13. Describe proposed or completed operations. (Clearly state all pertinent details, and give pertinent dates, including estimated date of starting any proposed work). SEE RULE 19.15.7.14 NMAC. For Multiple Completions: Attach wellbore diagram of proposed completion or recompletion.

Tap Rock Operating, LLC is requesting permission to temporarily abandon the Johnson Ranch Wolfcamp Zone (Pool Code 79355). Tap Rock will demonstrate mechanical integrity of the casing and cement after the zone has been fully isolated. A detailed procedure and schematics have been attached for review.

Please note this TA is due to a future plan to recomple the Third Bone Spring formation. Upon plugging of this new formation, cement will be placed on the later mentioned CIBP to properly plug the wellbore.

**Condition of Approval: notify
OCD Hobbs office 24 hours
prior of running MIT Test & Chart**

I hereby certify that the information above is true and complete to the best of my knowledge and belief.

SIGNATURE Bill Ramsey TITLE Regulatory Analyst DATE 3/4/2021

Type or print name Bill Ramsey E-mail address: bramsey@taprk.com PHONE: 720-238-2787

For State Use Only

APPROVED BY: Kerry Fortner TITLE Compliance Officer A DATE 3/4/21
Conditions of Approval (if any):



Job: TA Johnson Ranch Wolfcamp Interval

Well: Enron 9 State Com #1

Est. Start Date: 3/4/21

Formation: Wolfcamp B/C

Engineer: Alex Batista (281) 253-3999

2nd Call:

Consultant: John Istre (337) 258-2996

Supervisor: Gary Johnson (361) 230-3021

Enron 9 State Com #1			
AFE#	350-10139-001		
API#	30-025-34165		
RKB	26.0		
4.5" 15.10# P-110 Casing			
ID (in)	3.826		
Drift (in)	3.701		
Bottom	13,891	Top	12,219
85% Burst (psi)			
85% Collapse (psi)			
Capacity (bbls/ft)	0.0142		
Volume to FC (bbls)			
7.0" 29# S-95, N-80 & P-110 Casing			
ID (in)	6.184	Depth	12,580
Drift (in)	6.059		
85% Burst (psi)			
85% Collapse (psi)			
Capacity (bbls/ft)	0.0371		
9 5/8" 47# N-80 2nd Intermediate Casing			
85% Burst (psi)			
85% Collapse (psi)			
Setting Depth (ft)	5,213		
Perforating Guns			
Old top perf	13,234	New top perf	11,700
SPF	6	Charge Type	
Phasing	60	EHD / Penetration	
Directions			
FROM INT. OF NM-128 W & DELAWARE BASIN RD. GO W. ON NM-128 +/- 3.3 MILES THEN TURN RIGHT (NORTH) ON BRININSTOOL RD. AFTER +/- 1.1 MILES TURN LEFT (WEST) ON LEASE ROAD. TURN RIGHT INTO LOCATION.			

Temporarily Abandon Wolfcamp Procedure:

Change Well Head

1. Upon AOL, check pressure on all wellhead valves
2. Record SICP
3. Existing Well Head
 - 2" Cameron 5K Production Tree
4. Bullhead with approximately 500 bbls of fresh water or 10# brine
 - Mix with combination of scale/corrosion inhibitor/biocide/clay stabilizer
5. Confirm that well is dead for at least 30 minutes
 - If unable to kill well easily, set plug in tubing hanger as alternative option
6. Swap production tree with 7 1/16" frac valve for upcoming operations

Set Plug and Run Ultra Sonic Imager

7. Run 6" GR/JB for the 7" casing to roughly 12,219' and tag crossover
 - Record depth of GR/JB run in Wellview
8. Run 3.5" GR/JB for the 4.5" liner (double check GR size) to roughly 12,800'
 - Record depth of GR/JB run in Wellview
9. Make Note of Fluid Level
 - Record fluid level in Wellview
10. Set bridge plug in 4.5" liner at 12,600'
 - If run into issues, evaluate setting in 7" casing instead
11. Pump more water in well to make sure hole is filled to surface (if needed)
12. Run ultrasonic imager tool for testing wellbore integrity to roughly 12,500' or just above the bridge plug, based on SLB recommended procedure
 - Tool should be able to log 4.5" and 7" section with same run
13. Shut in 7 1/16" frac valve
14. Wait on results of wellbore integrity
 - Estimated 24 hours to validate results
15. Proceed with next steps if casing determined to be in good condition
 - Evaluate alternative options depending on results
16. Pressure test to 85% of pressure rating determined from ultra-sonic log for 10 minutes
 - Amount to be determined once log analyzed
 - If more than 10% bleeds off during the test, the test has failed and must be performed again

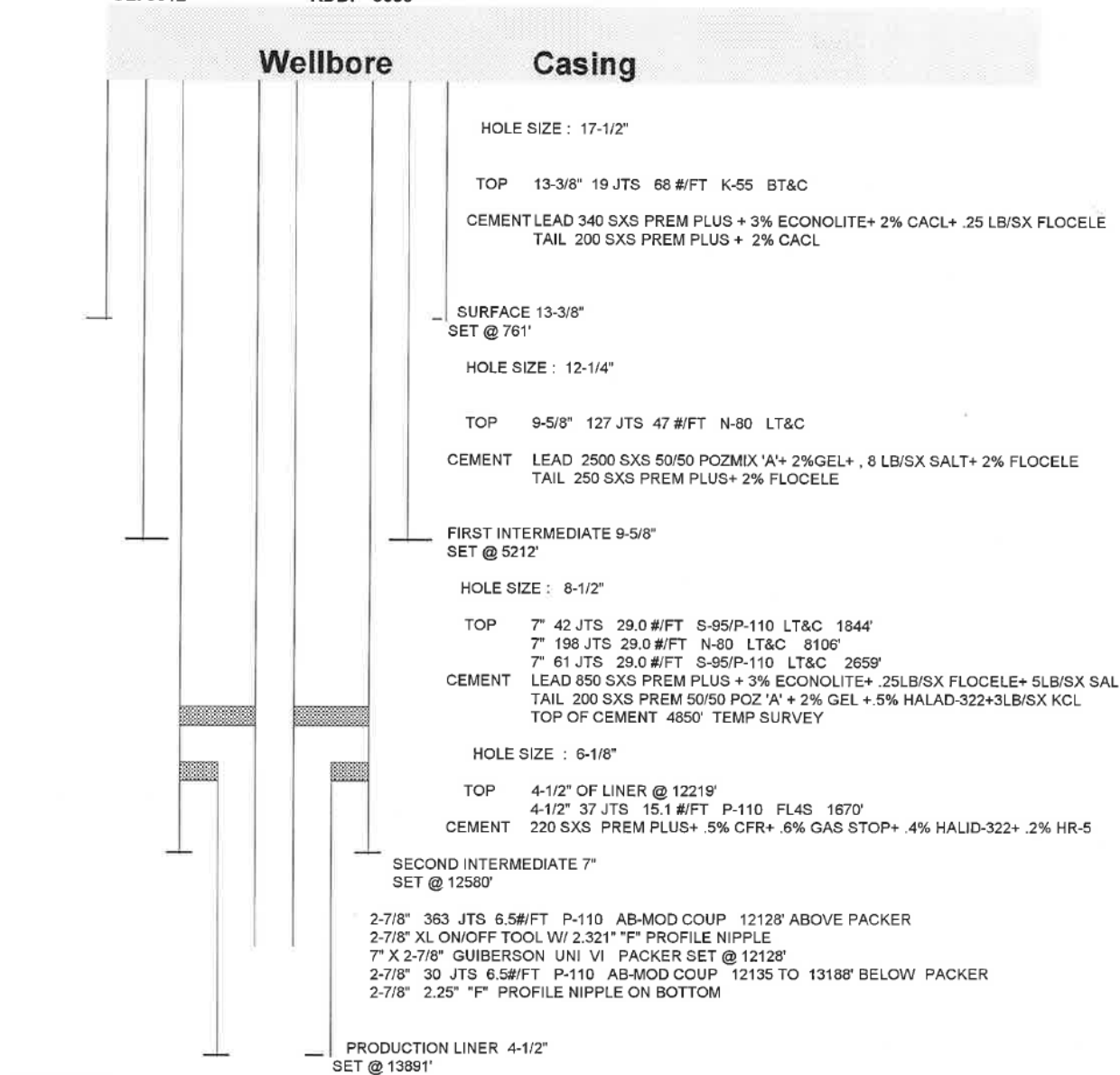
Current Schematic

WELL NAME: ENRON 9" STATE COM #1
 FIELD: JOHNSON RANCH
 COUNTY: LEA
 STATE: NEW MEXICO

WELLBORE SCHEMATIC

GL: 3612'

KDB: 3638'



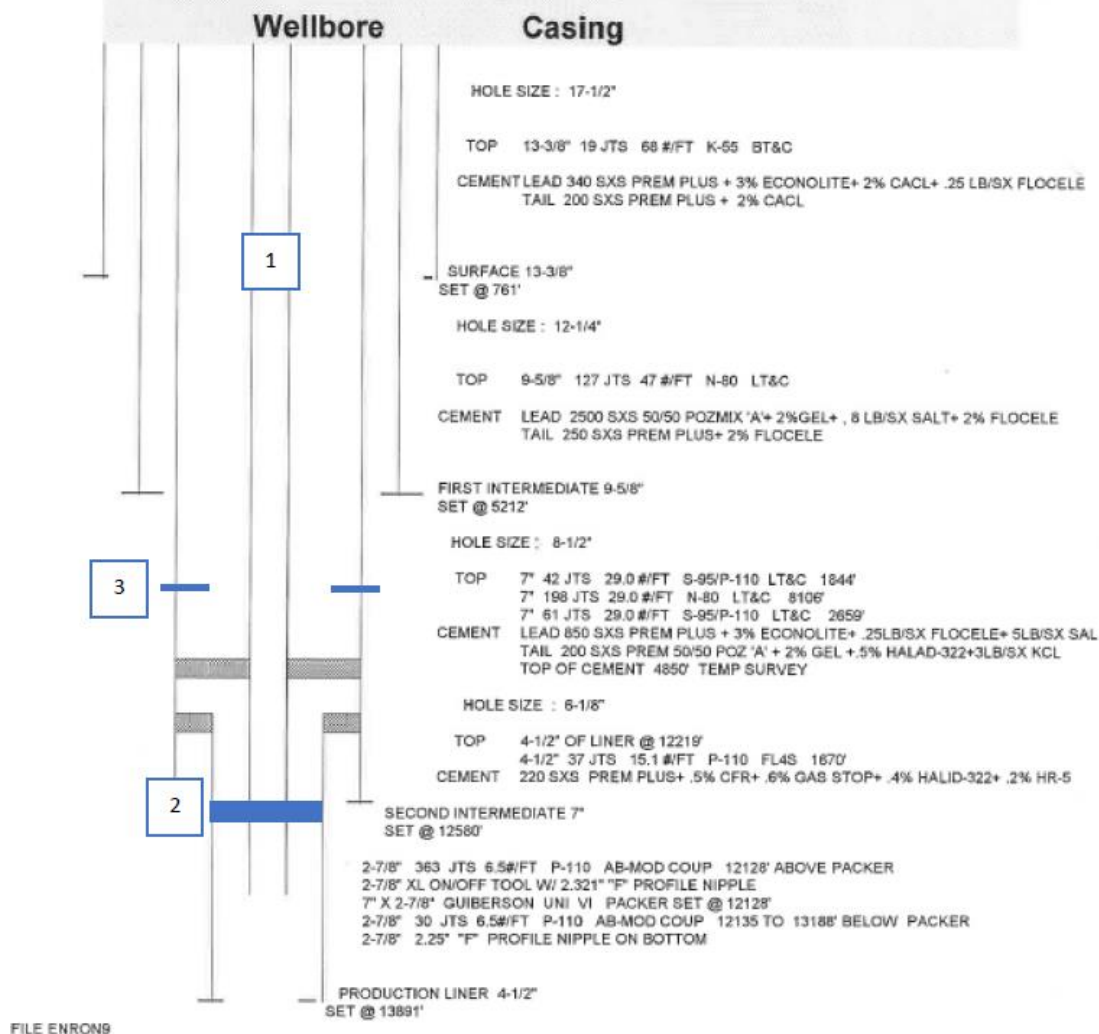
Proposed TA Schematic

WELL NAME: ENRON "9" STATE COM #1
 FIELD: JOHNSON RANCH
 COUNTY: LEA
 STATE: NEW MEXICO

WELLBORE SCHEMATIC

GL: 3612'

KDB: 3638'



Steps:

1. Make sure tubing is removed
2. Set CIBP at 12,600' to isolate original perfs
3. Perf new interval at 11,700'
 - a. Holes- 6 SPF
 - b. EHD average- 0.37" or 0.41"

Vendors

Chemical:	True Chem- Nick Gonzales 432-853-3315
Tree and Wellhead:	Cameron- Jose 432-438-5813 Bryan Bruno 918-284-8177
Ultra Sonic Imager log:	Schlumberger- Dispatch 970-867-3710 Marcia Solorzano 432-250-9657
Wireline and plug:	Patriot- Frank Marquez 432-770-8432
Surface Rentals:	Consultant's discretion
Memory Gauge:	Sage Rider- Fred Schwarz 303-981-6457
Perforating:	Liberty- Keith Braun 724-650-4585
DFIT:	Nine- Griffin Smith 940-284-7142



Job: TA Johnson Ranch Wolfcamp Interval

Well: Enron 9 State Com #1

Est. Start Date: 3/4/21

Formation: Wolfcamp B/C

Engineer: Alex Batista (281) 253-3999

2nd Call:

Consultant: John Istre (337) 258-2996

Supervisor: Gary Johnson (361) 230-3021

Enron 9 State Com #1			
AFE#	350-10139-001		
API#	30-025-34165		
RKB	26.0		
4.5" 15.10# P-110 Casing			
ID (in)	3.826		
Drift (in)	3.701		
Bottom	13,891	Top	12,219
85% Burst (psi)			
85% Collapse (psi)			
Capacity (bbls/ft)	0.0142		
Volume to FC (bbls)			
7.0" 29# S-95, N-80 & P-110 Casing			
ID (in)	6.184	Depth	12,580
Drift (in)	6.059		
85% Burst (psi)			
85% Collapse (psi)			
Capacity (bbls/ft)	0.0371		
9 5/8" 47# N-80 2nd Intermediate Casing			
85% Burst (psi)			
85% Collapse (psi)			
Setting Depth (ft)	5,213		
Perforating Guns			
Old top perf	13,234	New top perf	11,700
SPF	6	Charge Type	
Phasing	60	EHD / Penetration	
Directions			
FROM INT. OF NM-128 W & DELAWARE BASIN RD. GO W. ON NM-128 +/- 3.3 MILES THEN TURN RIGHT (NORTH) ON BRININSTOOL RD. AFTER +/- 1.1 MILES TURN LEFT (WEST) ON LEASE ROAD. TURN RIGHT INTO LOCATION.			

Temporarily Abandon Wolfcamp Procedure:

Change Well Head

1. Upon AOL, check pressure on all wellhead valves
2. Record SICP
3. Existing Well Head
 - 2" Cameron 5K Production Tree
4. Bullhead with approximately 500 bbls of fresh water or 10# brine
 - Mix with combination of scale/corrosion inhibitor/biocide/clay stabilizer
5. Confirm that well is dead for at least 30 minutes
 - If unable to kill well easily, set plug in tubing hanger as alternative option
6. Swap production tree with 7 1/16" frac valve for upcoming operations

Set Plug and Run Ultra Sonic Imager

7. Run 6" GR/JB for the 7" casing to roughly 12,219' and tag crossover
 - Record depth of GR/JB run in Wellview
8. Run 3.5" GR/JB for the 4.5" liner (double check GR size) to roughly 12,800'
 - Record depth of GR/JB run in Wellview
9. Make Note of Fluid Level
 - Record fluid level in Wellview
10. Set bridge plug in 4.5" liner at 12,600'
 - If run into issues, evaluate setting in 7" casing instead
11. Pump more water in well to make sure hole is filled to surface (if needed)
12. Run ultrasonic imager tool for testing wellbore integrity to roughly 12,500' or just above the bridge plug, based on SLB recommended procedure
 - Tool should be able to log 4.5" and 7" section with same run
13. Shut in 7 1/16" frac valve
14. Wait on results of wellbore integrity
 - Estimated 24 hours to validate results
15. Proceed with next steps if casing determined to be in good condition
 - Evaluate alternative options depending on results
16. Pressure test to 85% of pressure rating determined from ultra-sonic log for 10 minutes
 - Amount to be determined once log analyzed
 - If more than 10% bleeds off during the test, the test has failed and must be performed again

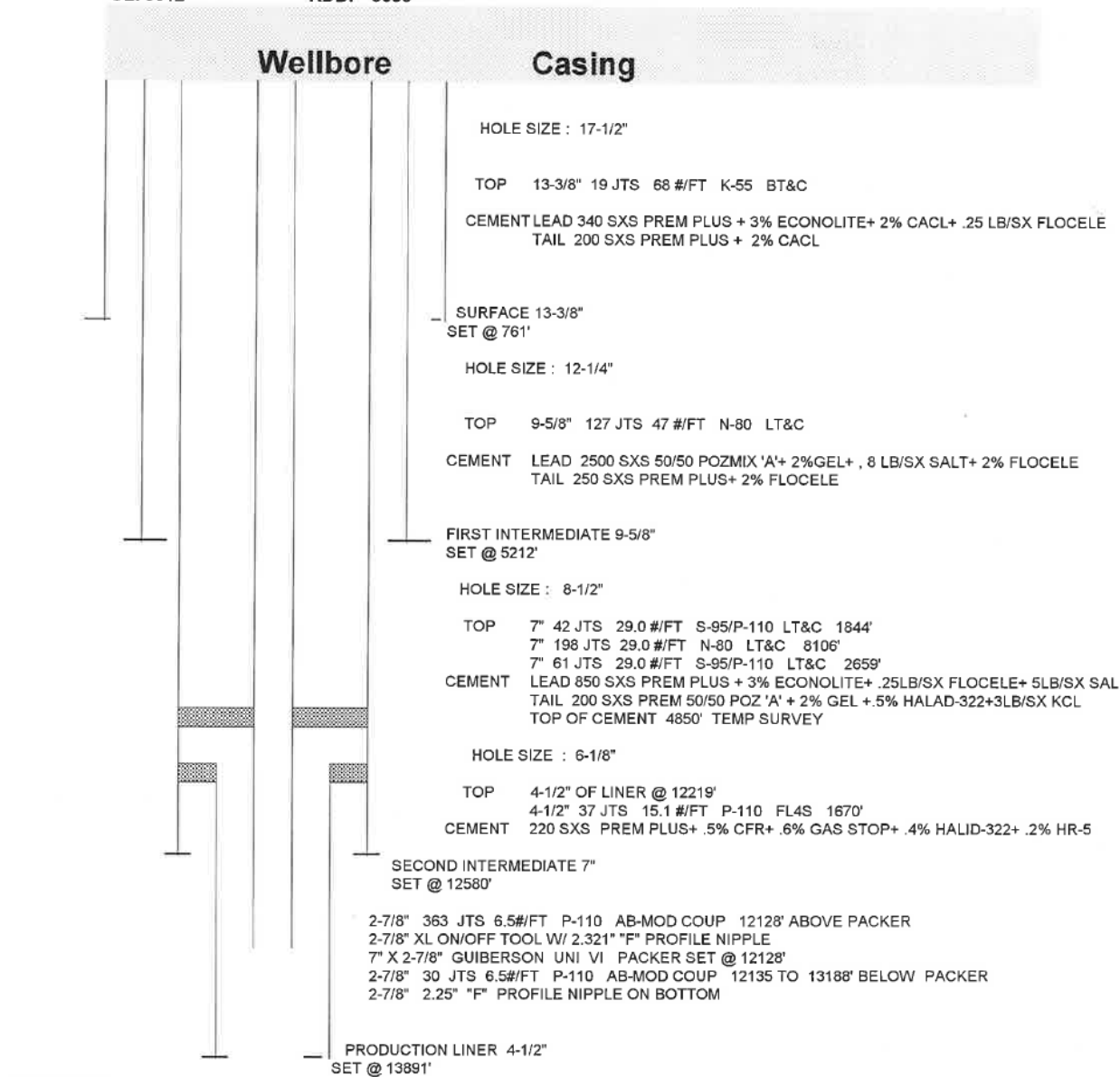
Current Schematic

WELL NAME: ENRON 9" STATE COM #1
 FIELD: JOHNSON RANCH
 COUNTY: LEA
 STATE: NEW MEXICO

WELLBORE SCHEMATIC

GL: 3612'

KDB: 3638'



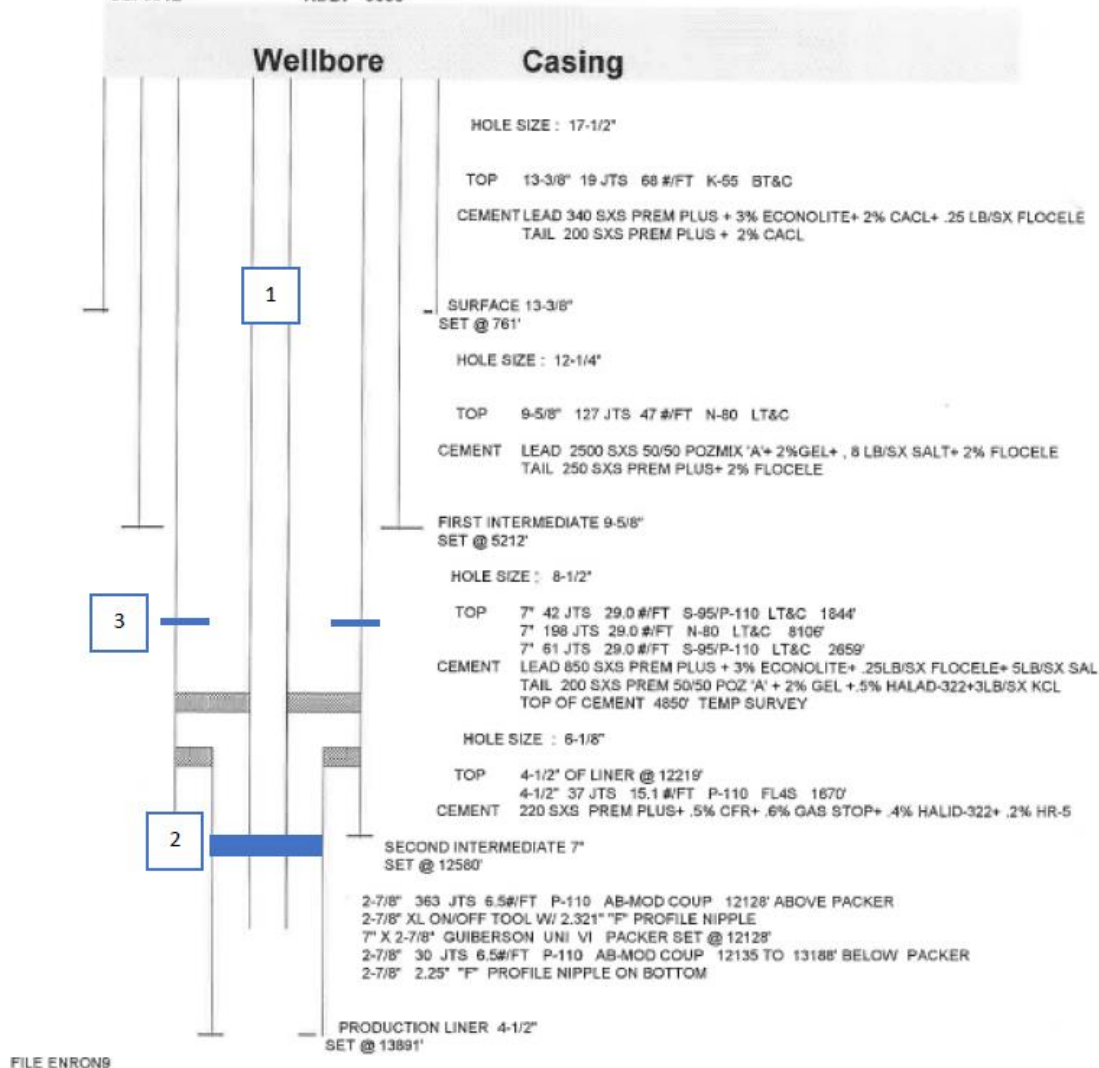
Proposed TA Schematic

WELL NAME: ENRON "9" STATE COM #1
 FIELD: JOHNSON RANCH
 COUNTY: LEA
 STATE: NEW MEXICO

WELLBORE SCHEMATIC

GL: 3612'

KDB: 3638'



Steps:

1. Make sure tubing is removed
2. Set CIBP at 12,600' to isolate original perfs
3. Perf new interval at 11,700'
 - a. Holes- 6 SPF
 - b. EHD average- 0.37" or 0.41"

Vendors

Chemical:	True Chem- Nick Gonzales 432-853-3315
Tree and Wellhead:	Cameron- Jose 432-438-5813 Bryan Bruno 918-284-8177
Ultra Sonic Imager log:	Schlumberger- Dispatch 970-867-3710 Marcia Solorzano 432-250-9657
Wireline and plug:	Patriot- Frank Marquez 432-770-8432
Surface Rentals:	Consultant's discretion
Memory Gauge:	Sage Rider- Fred Schwarz 303-981-6457
Perforating:	Liberty- Keith Braun 724-650-4585
DFIT:	Nine- Griffin Smith 940-284-7142

District I
1625 N. French Dr., Hobbs, NM 88240
Phone:(575) 393-6161 Fax:(575) 393-0720
District II
811 S. First St., Artesia, NM 88210
Phone:(575) 748-1283 Fax:(575) 748-9720
District III
1000 Rio Brazos Rd., Aztec, NM 87410
Phone:(505) 334-6178 Fax:(505) 334-6170
District IV
1220 S. St Francis Dr., Santa Fe, NM 87505
Phone:(505) 476-3470 Fax:(505) 476-3462

State of New Mexico
Energy, Minerals and Natural Resources
Oil Conservation Division
1220 S. St Francis Dr.
Santa Fe, NM 87505

CONDITIONS

Action 19699

CONDITIONS OF APPROVAL

Operator: TAP ROCK OPERATING, LLC Suite 200 Golden, CO80401		523 Park Point Drive	OGRID: 372043	Action Number: 19699	Action Type: C-103P
OCD Reviewer kfortner		Condition Run Post workover MIT test			