

Energy, Minerals and Natural Resources

OIL CONSERVATION DIVISION
1220 South St. Francis Dr.
Santa Fe, NM 87505

District I – (575) 393-6161
1625 N. French Dr., Hobbs, NM 88240
District II – (575) 748-1283
811 S. First St., Artesia, NM 88210
District III – (505) 334-6178
1000 Rio Brazos Rd., Aztec, NM 87410
District IV – (505) 476-3460
1220 S. St. Francis Dr., Santa Fe, NM
87505

WELL API NO. 30-025-36781
5. Indicate Type of Lease STATE <input type="checkbox"/> FEE <input checked="" type="checkbox"/>
6. State Oil & Gas Lease No.
7. Lease Name or Unit Agreement Name Shubert 7
8. Well Number 1 BW-031
9. OGRID Number 131652
10. Pool name or Wildcat BSW - Salado

SUNDRY NOTICES AND REPORTS ON WELLS
(DO NOT USE THIS FORM FOR PROPOSALS TO DRILL OR TO DEEPEN OR PLUG BACK TO A DIFFERENT RESERVOIR. USE "APPLICATION FOR PERMIT" (FORM C-101) FOR SUCH PROPOSALS.)

1. Type of Well: Oil Well ☐ Gas Well ☒ Other Brine

2. Name of Operator
H.R.C., INC.

3. Address of Operator
P.O. Box 5102 Hobbs, New Mexico

4. Well Location
Unit Letter J : 2313 feet from the South line and 2313 feet from the East line
Section 7 Township 19S Range 39E NMPM Lea County

11. Elevation (Show whether DR, RKB, RT, GR, etc.)
3585 GL

12. Check Appropriate Box to Indicate Nature of Notice, Report or Other Data

NOTICE OF INTENTION TO:

PERFORM REMEDIAL WORK ☐ PLUG AND ABANDON ☐
TEMPORARILY ABANDON ☐ CHANGE PLANS ☐
PULL OR ALTER CASING ☐ MULTIPLE COMPL ☐
DOWNHOLE COMMINGLE ☐
CLOSED-LOOP SYSTEM ☐
OTHER: ☐

SUBSEQUENT REPORT OF:

REMEDIAL WORK ☐ ALTERING CASING ☒
COMMENCE DRILLING OPNS. ☐ P AND A ☐
CASING/CEMENT JOB ☐
OTHER: Re set tubing depth deeper ☒

13. Describe proposed or completed operations. (Clearly state all pertinent details, and give pertinent dates, including estimated date of starting any proposed work). SEE RULE 19.15.7.14 NMAC. For Multiple Completions: Attach wellbore diagram of proposed completion or recompletion.

Please see the attached report with this C- 103 of work completed on the Shubert 7 Well # 1 BW-031.

Please find with this report the MIT chart that was conducted on 12/18/2020

Spud Date:

Rig Release Date:

I hereby certify that the information above is true and complete to the best of my knowledge and belief.

SIGNATURE David H. Alvarado TITLE Acting Agent for H.R.C., INC DATE 2/5/2021

Type or print name David H. Alvarado E-mail address: davidal00136@gmail.com PHONE: 575 513 1238

For State Use Only

APPROVED BY: Kerry Fortner TITLE Compliance Officer A DATE 3/16/21
Conditions of Approval (if any):

C-103 SUBSEQUENT REPORT

SHUBERT 7 WELL No. 1

API 30-025-36781 BW-031

12/14/2020 Performed JSA's, MI & RU workover unit and drilling reverse unit, ND wellhead tree and lift on 2 7/8 J-55 tbg. to 20K tbg. stuck worked tbg. to 30K tbg. started moving, removed tbg. hanger. NU BOP prepare for tubing extraction lay down total 71- 2 7/8 J 55 jts. and one parted jt. 23 foot long. Left in hole 8 foot of 2 7/8 J-55, bit sub w/ 4 3/4" bit. Tallied extracted pipe @ 2307' left in hole from 2307'-2312' closed BOP SDFN

12/15/2020 MI 86 jts. 2 3/8" EUE 4.7# J-55 tbg. and 50 jts. 4 1/2" 11.35 # J-55 Csg. w/ID 4". RIH w/new 4 3/4" skirted Varel cone bit w/ bit sub and 6- 3 1/2" OD d/c's on top of bit sub. RIH w/tbg. tag top of fish @ 1820' rolled of top of fish continue to RIH to 1826' RU Swivel rotate from 1826' to 1844' continued to drill and wash out bore to 1985', pulled bit up into 8 5/8 csg. To 1702 shut in BOP SDFN

12/16/2020 Open up BOP continued to RIH with Bit, Bit sub, D/C and tubing rolling off of TOF @ 1856' continued to drill and wash 1985' to 2020' hard drilling from 2020'-2034' fall out washing to 2044' circulate hole 60 minutes, POH LD 3 1/2" d/c w/BHA shut in BOP SDFN

12/17/2020 Open BOP installed 4 1/2 rams MI Lewis Casing Crew, P/U 1- 4 1/2 muleshoed jt., TIH with 47 jts. 4 1/2" 11.35# J-55 LTC casing total 48 joints landed casing w/ 4 1/2 " X 3.85' LTC Pin X 4 1/2" LTC Box 11.35# J-55 in Box liner w/22k string weight. Casing well head hanger(double grove O ring seal) tighten hanger retaining pins. 4 1/2" 11.35# Liner Casing set at 1993' closed well in. SDFN

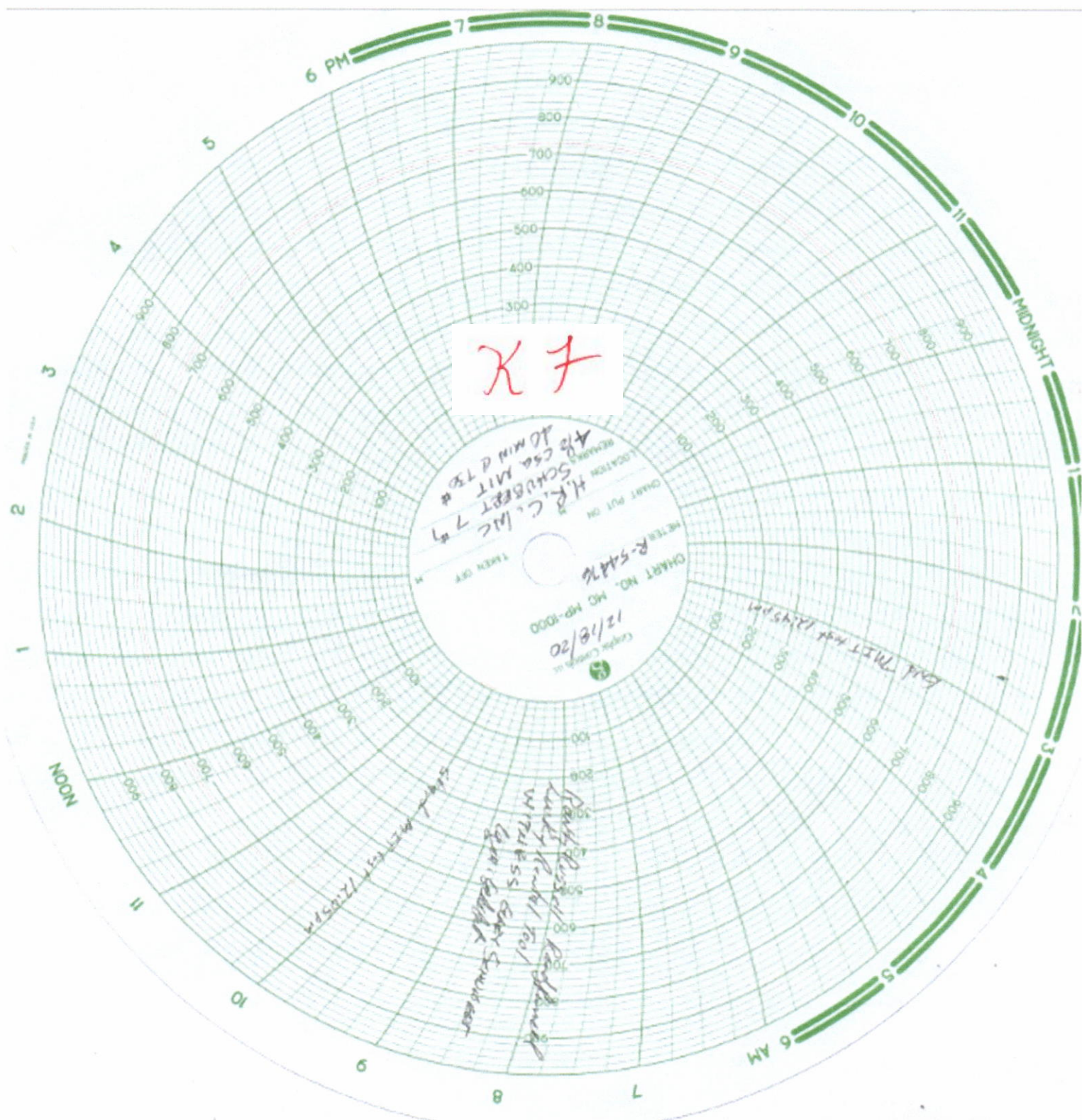
12/18/2020 Open well and BOP removed landing sub R/D Lewis Casing Crew. N/D BOP installed 7 1/16" 3M x 7 1/16" 3M tbg. spool w/ 6 3/8" bore TC Profile with 2" API pipe outlets, installed to 5 1/2" csg. Wellhead section 7 1/16" 3M flange top over 4 1/2" csg. hanger. Tested wellhead for 10 minutes @ 2200 psi no leak off, NU BOP & installed 2 3/8" rams. RIH w/ AD1 Pkr. Set @ 1960', tested 4 1/2" annulus to 730 Psi for 40 minutes tested good no leak off. TOH with AD1 Pkr. RIH with new 3 7/8" skirted mill tooth bit, 2 3/8" eubx X 2 3/8" rbgx bit sub below 2 3/8" J-55 tbg. tag @2048' Pulled bit up into 4 1/2" casing at 1864 closed well in and BOP SDFN.

12/19/2020 Open well RIH with Bit to 2048' drilled to 2051', fell out ran to 2074' drill from 2074 - 2076 ran to 2079' continued drilling 2079' - 2081' ran to to 2102', continued drilling from 2102' -2105' fell out continued washing to 2163' got stuck, worked pipe free, could not return back to 2163' Pipe stacking out after lifting. Re moved swivel POH w/ tbg. Tubing was

bent on joint number two above bit sub, and sheared cut on jt. # 1 above bit sub and bit left 1-16' 2 3/8" tbg. piece and a bit sub w/ 3 7/8" bit in hole. 18' fish est. depth of TOF #2 @2145'-2163" shut in SDFN.

12/21/20 Open up well P/U & RIH w/ 3 7/8" bear claw bit, bit sub, 4- 3 1/8" OD drill collars, & 2 3/8" tubing to 2012' attached swivel w/ 2 1/2 md connection on top Joint, drilled from 2012'-2014' then ran to drill 2018'-2021' ran to 2025'-2026' then ran to 2162'- 2166' fell out 2182' ran to drill 2188' – 2190' ran to 2194' – 2231' fell out 2231' ran to drill 2231' – 2236' fell out to drill 2240' – 2265' TUH w/ bit into 4 1/2" casing @ 1865' closed well in SDFN

12/22/2020 Open well up ran bit back to drill 2265' – 2267' fell out and ran to tag 2649' pulled bit to land @2609' RD swivel, ND stripper head & BOP, install tbg. hanger flange and N/U well head connections pumped on well 6 hrs. shut down & connect to facility surface injection pump, RD rig & reverse unit then released all workover equipment.



American Valve & Meter, Inc.**1113 W. BROADWAY****P.O. BOX 166 HOBBS, NM 88240****T0:Lucky Rental****DATE: 12/1/20****This is to certify that:****I, Stephen Waskas , Technician for American Valve & Meter Inc. Has checked the calibration of the following instrument.****12" _Pressure recorder****Ser# R-54476****at these points.**

Pressure #			Temperature *or Pressure #		
Test	Found	Left	Test	Found	Left
- 0	-	- 0	-	-	-
- 500	-	- 500	-	-	-
- 700	-	- 700	-	-	-
- 1000	-	- 1000	-	-	-
- 200	-	- 200	-	-	-
- 0	-	- 0			

Remarks:**Signature:**

SCHUBERT 7 WELL NO. 1

API 30-025-36781

2313 FSL, 2313 FEL

J - SEC 7 - T19S - R39E

LAT: 32.6738815 LONG: -103.0835953

Current
12/22/2020

Lithology Record (C-105)

From	To	Thick / ft.	Lithology
212'	1151'	939'	Redbed
1151'	1455'	304'	RB / Shale
1455'	1775'	320'	Shale
1775'	1880'	105'	Anhydrite
1880'	2900'	1020'	Salt, Redbed, Shale
2900'	3130'	230'	Anhy, Salt, Shale
3130'	4080'	950'	Anhy., Dolomite
4080'	4430'	350'	Dolomite, Anhydrite
4430'	7500'	3070'	Dolomite, Limestone
7500'	7900'	400'	Dolomite

OH HOLE SIZE 7 7/8"

DRILL OH TO 2649'

Yates @2930'	PLUG # 4	100sx @ 2947'
est. TOC @	2,557'	390'
PLUG # 3	40sx @ 4089'	
est. TOC @	3,933'	156'
PLUG # 2	35sx @ 5710'	
est. TOC @	5,573'	137'
PLUG # 1	30sx @ 7900'	
est. TOC @	7,783'	117'

TREE

INTER.

SURFACE
SET AT

Liner

TD 7900'

Hung with 3M head

79 jts. 2 3/8" 4.7# J-55

Bit SET @ 2609'

5 1/2" 15.5# Drift 4.825"

Set @ 404' 200 sx cir surf

8 5/8" 24# ST&C

1865' w/900SX

CIR. SURFACE

4 1/2" 11.35# J55 liner Csg.

set @ 1993'

3% KCL Surface to 1865'

BHA point @ 2609' W/...

3 1/8" OD X 1 1/2" ID xo

4 - 3 1/8" OD x 1 1/2" ID D/C

3 1/8" x 1 3/4" ID xo

Bit 3 7/8" Bear Claw Bit

Formation Top (C-105)

T. Anhy	1775'
T. Salt	1880'
B. Salt	2900'
T. Yates	2930'
T. 7 Rivers	3160'
T. Queen	3710'
T. Grayburg	4080'
T. San Andres	4396'
T. Glorieta	5715'
T. Paddock	5858'
T. Blinbry	6260'
T. Tubb	6820'
T. Drinkard	7050'
T. Abo	7464'

District I

1625 N. French Dr., Hobbs, NM 88240
Phone:(575) 393-6161 Fax:(575) 393-0720

District II

811 S. First St., Artesia, NM 88210
Phone:(575) 748-1283 Fax:(575) 748-9720

District III

1000 Rio Brazos Rd., Aztec, NM 87410
Phone:(505) 334-6178 Fax:(505) 334-6170

District IV

1220 S. St Francis Dr., Santa Fe, NM 87505
Phone:(505) 476-3470 Fax:(505) 476-3462

State of New Mexico
Energy, Minerals and Natural Resources
Oil Conservation Division
1220 S. St Francis Dr.
Santa Fe, NM 87505

CONDITIONS

Action 18133

CONDITIONS OF APPROVAL

Operator:	OGRID:	Action Number:	Action Type:
HRC INC P.O. Box 5102 Hobbs, NM88241	131652	18133	C-103Z

OCD Reviewer	Condition
kfortner	None