

Form 3160-5  
(June 2015)UNITED STATES  
DEPARTMENT OF THE INTERIOR  
BUREAU OF LAND MANAGEMENTFORM APPROVED  
OMB NO. 1004-0137  
Expires: January 31, 2018**SUNDRY NOTICES AND REPORTS ON WELLS**  
**Do not use this form for proposals to drill or to re-enter an abandoned well. Use form 3160-3 (APD) for such proposals.**5. Lease Serial No.  
NMNM92187

6. If Indian, Allottee or Tribe Name

7. If Unit or CA/Agreement, Name and/or No.

8. Well Name and No.  
BIG BUCKS FED COM 501H9. API Well No.  
30-025-47064-00-X110. Field and Pool or Exploratory Area  
WILDCAT11. County or Parish, State  
LEA COUNTY, NM**SUBMIT IN TRIPLICATE - Other instructions on page 2**

1. Type of Well

☒ Oil Well ☐ Gas Well ☐ Other2. Name of Operator  
ASCENT ENERGY LLCContact: BEN METZ  
E-Mail: bmetz@ascentenergy.us3a. Address  
1125 17TH ST SUITE 410  
DENVER, CO 802023b. Phone No. (include area code)  
Ph: 720-710-8944

4. Location of Well (Footage, Sec., T., R., M., or Survey Description)

Sec 1 T21S R32E SESE 1225FSL 470FEL  
32.501038 N Lat, 103.621353 W Lon

## 12. CHECK THE APPROPRIATE BOX(ES) TO INDICATE NATURE OF NOTICE, REPORT, OR OTHER DATA

TYPE OF SUBMISSION	TYPE OF ACTION			
<input checked="" type="checkbox"/> Notice of Intent	<input type="checkbox"/> Acidize	<input type="checkbox"/> Deepen	<input type="checkbox"/> Production (Start/Resume)	<input type="checkbox"/> Water Shut-Off
<input type="checkbox"/> Subsequent Report	<input type="checkbox"/> Alter Casing	<input type="checkbox"/> Hydraulic Fracturing	<input type="checkbox"/> Reclamation	<input type="checkbox"/> Well Integrity
<input type="checkbox"/> Final Abandonment Notice	<input type="checkbox"/> Casing Repair	<input type="checkbox"/> New Construction	<input type="checkbox"/> Recomplete	<input checked="" type="checkbox"/> Other
	<input type="checkbox"/> Change Plans	<input type="checkbox"/> Plug and Abandon	<input type="checkbox"/> Temporarily Abandon	Change to Original A
	<input type="checkbox"/> Convert to Injection	<input type="checkbox"/> Plug Back	<input type="checkbox"/> Water Disposal	PD

13. Describe Proposed or Completed Operation: Clearly state all pertinent details, including estimated starting date of any proposed work and approximate duration thereof. If the proposal is to deepen directionally or recompleat horizontally, give subsurface locations and measured and true vertical depths of all pertinent markers and zones. Attach the Bond under which the work will be performed or provide the Bond No. on file with BLM/BIA. Required subsequent reports must be filed within 30 days following completion of the involved operations. If the operation results in a multiple completion or recompleat in a new interval, a Form 3160-4 must be filed once testing has been completed. Final Abandonment Notices must be filed only after all requirements, including reclamation, have been completed and the operator has determined that the site is ready for final inspection.

## Request to Move Surface Hole Location

From:

125 feet FSL &amp; 470 feet FEL, SESE, Section 1, T21S, R32E

To:

100 feet FNL &amp; 401 feet FEL, NENE, Section 12, T21S, R32E

Moved on the same pad site and there will be no new surface disturbance. See attachment for revised C-102 and well site layout.

14. I hereby certify that the foregoing is true and correct.

**Electronic Submission #510733 verified by the BLM Well Information System**  
**For ASCENT ENERGY LLC, sent to the Hobbs**  
**Committed to AFMSS for processing by JUANA MEDRANO on 04/21/2020 (20JM0115SE)**

Name (Printed/Typed) CORY WALK

Title CONSULTANT

Signature (Electronic Submission)

Date 04/14/2020

**THIS SPACE FOR FEDERAL OR STATE OFFICE USE**

Approved By CODY LAYTON

Title ASSISTANT FIELD MANAGER

Date 06/02/2020

Conditions of approval, if any, are attached. Approval of this notice does not warrant or certify that the applicant holds legal or equitable title to those rights in the subject lease which would entitle the applicant to conduct operations thereon.

Office Hobbs

Title 18 U.S.C. Section 1001 and Title 43 U.S.C. Section 1212, make it a crime for any person knowingly and willfully to make to any department or agency of the United States any false, fictitious or fraudulent statements or representations as to any matter within its jurisdiction.

(Instructions on page 2)

**\*\* BLM REVISED \*\* BLM REVISED \*\* BLM REVISED \*\* BLM REVISED \*\* BLM REVISED \*\***

**Additional data for EC transaction #510733 that would not fit on the form**

**32. Additional remarks, continued**

Note: Error on approved 3160 form for SHL of 1225 FSL; should be 125 FSL

**Revisions to Operator-Submitted EC Data for Sundry Notice #510733**

	<b>Operator Submitted</b>	<b>BLM Revised (AFMSS)</b>
Sundry Type:	APDCH NOI	APDCH NOI
Lease:	NMNM092187	NMNM92187
Agreement:		
Operator:	ASCENT ENERGY LLC 1621 18TH STREET SUITE 200 DENVER, CO 80202 Ph: 720-710-8999	ASCENT ENERGY LLC 1125 17TH ST SUITE 410 DENVER, CO 80202 Ph: 720.524.3449
Admin Contact:	BEN METZ VP EXPLORATION E-Mail: bmetz@ascentenergy.com  Ph: 303-513-8590	BEN METZ VP OF EXPLORATION E-Mail: bmetz@ascentenergy.us  Ph: 720-710-8944
Tech Contact:	CORY WALK CONSULTANT E-Mail: cory@permitswest.com  Ph: 505-466-8120	CORY WALK CONSULTANT E-Mail: cory@permitswest.com  Ph: 505-466-8120
Location:		
State:	NM	NM
County:	LEA	LEA
Field/Pool:	WILDCAT; BONE SPRING	WILDCAT
Well/Facility:	BIG BUCKS FED COM 501H Sec 1 T21S R32E Mer 1PM SESE 125FSL 470FEL	BIG BUCKS FED COM 501H Sec 1 T21S R32E SESE 1225FSL 470FEL 32.501038 N Lat, 103.621353 W Lon

District I  
1625 N. French Dr., Hobbs, NM 88240  
Phone: (575) 393-6161 Fax: (575) 393-0720

District II  
811 S. First St., Artesia, NM 88210  
Phone: (575) 748-1283 Fax: (575) 748-9720

District III  
1000 Rio Brazos Road, Aztec, NM 87410  
Phone: (505) 334-6178 Fax: (505) 334-6170

District IV  
1220 S. St. Francis Dr., Santa Fe, NM 87505  
Phone: (505) 476-3460 Fax: (505) 476-3462

State of New Mexico  
Energy, Minerals & Natural Resources Department  
**OIL CONSERVATION DIVISION**  
1220 South St. Francis Dr.  
Santa Fe, NM 87505

Form C-102  
Revised August 1, 2011  
Submit one copy to appropriate  
District Office  
☐ AMENDED REPORT

## WELL LOCATION AND ACREAGE DEDICATION PLAT

<sup>1</sup> API Number <b>30-025-47064</b>	<sup>2</sup> Pool Code <b>97895</b>	<sup>3</sup> Pool Name <b>WC-025 G-08 S213304D; BONE SPRING</b>
<sup>4</sup> Property Code <b>328104</b>	<sup>5</sup> Property Name <b>BIG BUCKS FED COM</b>	<sup>6</sup> Well Number <b>501H</b>
<sup>7</sup> OGRID No. <b>325830</b>	<sup>8</sup> Operator Name <b>ASCENT ENERGY, LLC.</b>	<sup>9</sup> Elevation <b>3,814'</b>

<sup>10</sup> Surface Location

UL or lot no.	Section	Township	Range	Lot Idn	Feet from the	North/South line	Feet from the	East/West line	County
A	12	21 S	32 E		100	NORTH	401	EAST	LEA

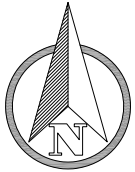
<sup>11</sup> Bottom Hole Location If Different From Surface

UL or lot no.	Section	Township	Range	Lot Idn	Feet from the	North/South line	Feet from the	East/West line	County
A	13	21 S	32 E		1,266	NORTH	330	EAST	LEA

<sup>12</sup> Dedicated Acres	<sup>13</sup> Joint or Infill	<sup>14</sup> Consolidation Code	<sup>15</sup> Order No.
<b>200</b>			

No allowable will be assigned to this completion until all interests have been consolidated or a non-standard unit has been approved by the division.

	<sup>16</sup> <b>SEC. 1 T21S R32E</b> GRID AZ.=89°29'52" HORIZ. DIST.=70.61' GRID AZ.=179°39'49" HORIZ. DIST.=6,451.90'	<sup>17</sup> <b>OPERATOR CERTIFICATION</b> I hereby certify that the information contained herein is true and complete to the best of my knowledge and belief, and that this organization either owns a working interest or unleased mineral interest in the land including the proposed bottom hole location or has a right to drill this well at this location pursuant to a contract with an owner of such a mineral or working interest, or to a voluntary pooling agreement or a compulsory pooling order heretofore entered by the division. Signature: <i>Cory Walk</i> Date: <b>3-26-20</b> Printed Name: <b>Cory Walk</b> E-mail Address: <b>cory@permitswest.com</b>
	<sup>18</sup> <b>SURVEYOR CERTIFICATION</b> I hereby certify that the well location shown on this plat was plotted from field notes of actual surveys made by me or under my supervision, and that the same is true and correct to the best of my belief. Date of Survey: <b>02-06-2020</b> Signature and Seal of Professional Surveyor: <i>[Signature]</i> MARK DILLON HARP 23786 Certificate Number: <b>RR</b> 2020010100	
	<b>SHL (NAD83 NME)</b> Y = 546,517.5 X = 760,908.1 LAT. = 32.500422 °N LONG. = 103.621126 °W <b>FTP (NAD83 NME)</b> Y = 546,518.1 X = 760,978.7 LAT. = 32.500422 °N LONG. = 103.620897 °W <b>LTP (NAD83 NME)</b> Y = 540,116.3 X = 761,016.3 LAT. = 32.482826 °N LONG. = 103.620914 °W <b>BHL (NAD83 NME)</b> Y = 540,066.3 X = 761,016.6 LAT. = 32.482688 °N LONG. = 103.620914 °W <b>CORNER COORDINATES (NAD83 NME)</b> A - Y = 546,621.0 N , X = 761,308.2 E B - Y = 543,978.1 N , X = 761,320.2 E C - Y = 541,334.3 N , X = 761,338.7 E D - Y = 540,019.2 N , X = 761,346.9 E E - Y = 540,007.9 N , X = 760,030.6 E F - Y = 541,325.6 N , X = 760,022.1 E G - Y = 543,967.1 N , X = 760,005.4 E H - Y = 546,609.4 N , X = 759,991.5 E	
	<b>SHL (NAD27 NME)</b> Y = 546,456.7 X = 719,726.8 LAT. = 32.500301 °N LONG. = 103.620636 °W <b>FTP (NAD27 NME)</b> Y = 546,457.3 X = 719,797.5 LAT. = 32.500302 °N LONG. = 103.620407 °W <b>LTP (NAD27 NME)</b> Y = 540,055.6 X = 719,834.8 LAT. = 32.482705 °N LONG. = 103.620424 °W <b>BHL (NAD27 NME)</b> Y = 540,005.6 X = 719,835.1 LAT. = 32.482568 °N LONG. = 103.620424 °W <b>CORNER COORDINATES (NAD27 NME)</b> A - Y = 546,560.2 N , X = 720,127.0 E B - Y = 543,917.3 N , X = 720,138.9 E C - Y = 541,273.5 N , X = 720,157.3 E D - Y = 539,958.5 N , X = 720,165.4 E E - Y = 539,947.2 N , X = 718,849.2 E F - Y = 541,264.9 N , X = 718,840.7 E G - Y = 543,906.3 N , X = 718,824.1 E H - Y = 546,548.6 N , X = 718,810.3 E	



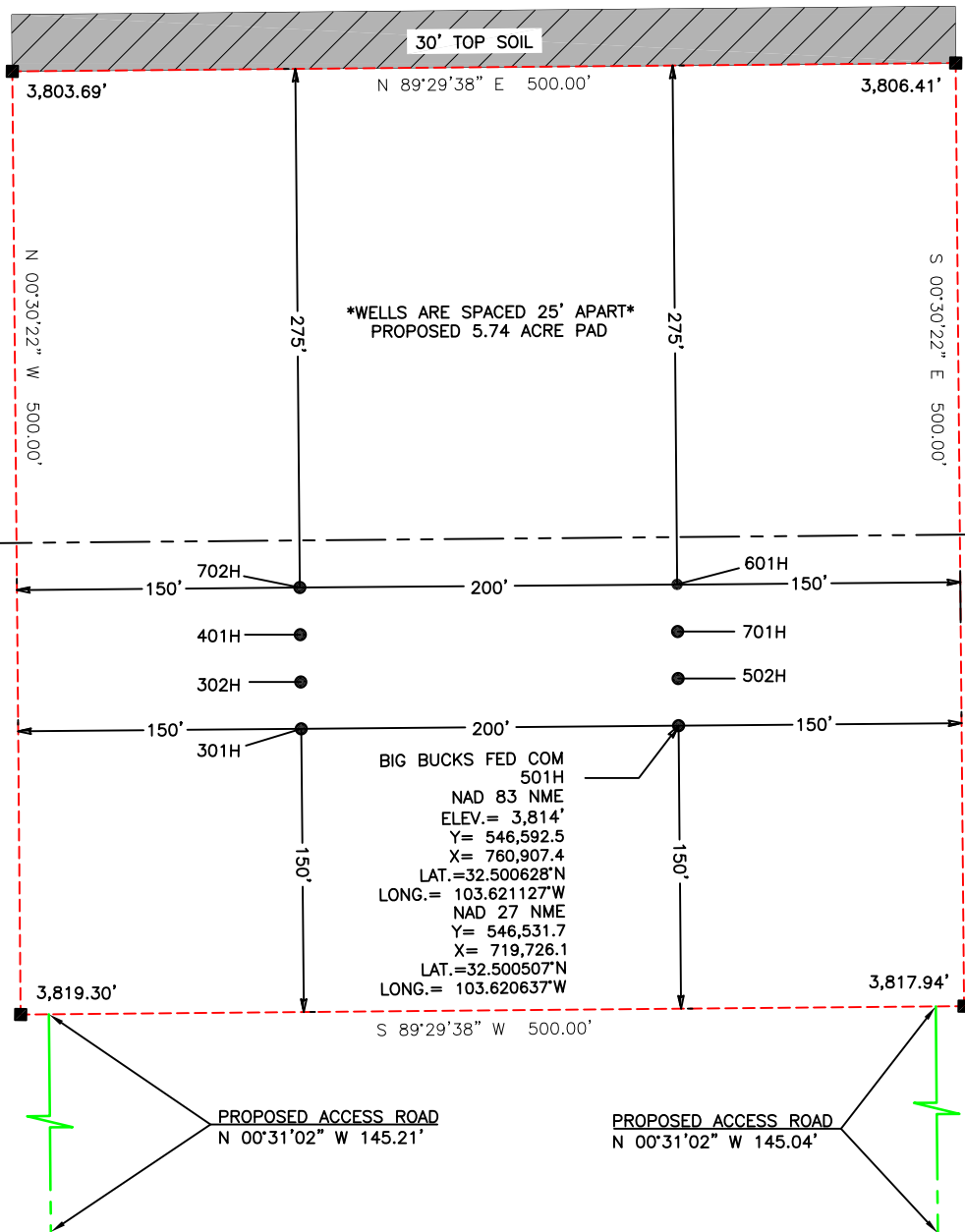
0 50' 100'  
1" = 100 FEET

**SECTION 1**  
TOWNSHIP 21 SOUTH,  
RANGE 32 EAST  
NEW MEXICO PRIME  
MERIDIAN  
OWNER: U.S.A.

SE/4 SE/4

NE/4 NE/4

**SECTION 12**  
TOWNSHIP 21 SOUTH,  
RANGE 32 EAST  
NEW MEXICO PRIME  
MERIDIAN  
OWNER: U.S.A.



NOTE:

- 1). SEE "TOPOGRAPHICAL AND ACCESS ROAD MAP"  
FOR PROPOSED ROAD LOCATION

DIRECTIONS TO THIS LOCATION:

FROM THE INTERSECTION OF N.M. HIGHWAY 176 AND BOOTLEG LANE,  
GO SOUTH ON BOOTLEG LANE APPROX. 1.7 MILES. TURN LEFT (EAST) ON A GRAVEL  
ROAD AND GO APPROX. 0.96 MILES. TURN LEFT (NORTH), THE LOCATION IS TO THE  
NORTH.

I, MARK DILLON HARP, NEW MEXICO PROFESSIONAL SURVEYOR  
NO. 23786, DO HEREBY CERTIFY THAT THIS SURVEY PLAT AND  
THE ACTUAL SURVEY ON THE GROUND UPON WHICH IT IS BASED  
WERE PERFORMED BY ME OR UNDER MY DIRECT SUPERVISION;  
THAT I AM RESPONSIBLE FOR THIS SURVEY, THAT THIS SURVEY  
MEETS THE MINIMUM STANDARDS FOR SURVEYING IN NEW  
MEXICO, AND THAT IS TRUE AND CORRECT TO THE BEST OF  
MY KNOWLEDGE AND BELIEF.

*[Signature]*

MARK DILLON HARP  
REGISTERED PROFESSIONAL LAND SURVEYOR  
STATE OF NEW MEXICO NO. 23786



550 Bailey Ave., 205 - Fort Worth, TX 76107  
Ph: 817.349.9800 - Fax: 979.732.5271  
TBPE Firm 17957 | TBPLS Firm 10193887  
www.fscinc.net

© COPYRIGHT 2016 - ALL RIGHTS RESERVED

LEGEND

- — — — — PROPOSED ACCESS RD.  
- - - - - PROPOSED PAD  
- - - - - SECTION LINE

**ASCENT ENERGY, LLC.**

**WELL SITE PLAN**

BIG BUCKS FED COM 501H  
LOCATED 401 FEET FROM THE EAST LINE  
AND 100 FEET FROM THE NORTH LINE OF  
SECTION 12, TOWNSHIP 21 SOUTH, RANGE 32  
EAST, N.M.P.M. LEA COUNTY, NEW MEXICO

DATE:	02-26-2020	PROJECT NO:	2020010100
DRAWN BY:	RR	SCALE:	1" = 100'
CHECKED BY:	DH	SHEET:	1 OF 3
FIELD CREW:	RE	REVISION:	0

District I  
1625 N. French Dr., Hobbs, NM 88240  
District II  
811 S. First St., Artesia, NM 88210  
District III  
1000 Rio Brazos Road, Aztec, NM 87410  
District IV  
1220 S. St. Francis Dr., Santa Fe, NM 87505

State of New Mexico  
Energy, Minerals and Natural Resources Department  
Oil Conservation Division  
1220 South St. Francis Dr.  
Santa Fe, NM 87505

Submit Original  
to Appropriate  
District Office

### GAS CAPTURE PLAN

Date: 3-24-20

☒ Original

Operator & OGRID No.: Ascent Energy, LLC (325830)

☐ Amended - Reason for Amendment: \_\_\_\_\_

This Gas Capture Plan outlines actions to be taken by the Operator to reduce well/production facility flaring/venting for new completion (new drill, recomple to new zone, re-frac) activity.

*Note: Form C-129 must be submitted and approved prior to exceeding 60 days allowed by Rule (Subsection A of 19.15.18.12 NMAC).*

#### Well(s)/Production Facility – Name of facility

The well(s) that will be located at the production facility are shown in the table below.

Well Name	API	SHL (ULSTR)	SHL Footages	Expected MCF/D	Flared or Vented	Comments
Big Bucks Fed Com 301H	30-025-	A-12-21s-32e	100' FNL & 601' FEL	200	≈30 days	flare until well clean, then connect
Big Bucks Fed Com 302H	30-025-	A-12-21s-32e	75' FNL & 601' FEL	200	≈30 days	flare until well clean, then connect
Big Bucks Fed Com 401H	30-025-	A-12-21s-32e	50' FNL & 601' FEL	200	≈30 days	flare until well clean, then connect
Big Bucks Fed Com 501H	30-025-	A-12-21s-32e	100' FNL & 401' FEL	200	≈30 days	flare until well clean, then connect
Big Bucks Fed Com 502H	30-025-	A-12-21s-32e	75' FNL & 401' FEL	200	≈30 days	flare until well clean, then connect
Big Bucks Fed Com 601H	30-025-	A-12-21s-32e	25' FNL & 401' FEL	200	≈30 days	flare until well clean, then connect
Big Bucks Fed Com 701H	30-025-	A-12-21s-32e	50' FNL & 401' FEL	200	≈30 days	flare until well clean, then connect
Big Bucks Fed Com 702H	30-025-	A-12-21s-32e	25' FNL & 601' FEL	200	≈30 days	flare until well clean, then connect

#### Gathering System and Pipeline Notification

Well will be connected to a production facility after flowback operations are complete, if gas transporter system is in place. Gas produced from this production facility has not yet been dedicated. Ascent Energy, LLC will provide (periodically) to 3Bear Field Services, LLC a drilling, completion and estimated first production date for wells that are scheduled to be drilled in the foreseeable future. In addition, Ascent Energy, LLC and 3Bear Field Services, LLC will have periodic conference calls to discuss changes to drilling and completion schedules. Gas from these wells will be processed at 3Bear Field Services, LLC Processing Plant at Marathon Road. The actual flow of the gas will be based on compression operating parameters and gathering system pressures.

#### Flowback Strategy

After the fracture treatment/completion operations, well(s) will be produced to temporary production tanks and gas will be flared or vented. During flowback, the fluids and sand content will be monitored. When the produced fluids contain minimal sand, the wells will be turned to production facilities. Gas sales should start as soon as the wells start flowing through the

production facilities, unless there are operational issues on 3Bear Field Services, LLC system at that time. Based on current information, it is Ascent Energy, LLC's belief the system ultimately can take this gas upon completion of the well(s).

Safety requirements during cleanout operations from the use of underbalanced air cleanout systems may necessitate that sand and non-pipeline quality gas be vented and/or flared rather than sold on a temporary basis.

#### **Alternatives to Reduce Flaring**

Below are alternatives considered from a conceptual standpoint to reduce the amount of gas flared.

- Power Generation – On lease
  - Only a portion of gas is consumed operating the generator, remainder of gas will be flared
- Compressed Natural Gas – On lease
  - Gas flared would be minimal, but might be uneconomical to operate when gas volume declines
- NGL Removal – On lease

Plants are expensive, residue gas is still flared, and uneconomical to operate when gas volume declines

**District I**  
1625 N. French Dr., Hobbs, NM 88240  
Phone:(575) 393-6161 Fax:(575) 393-0720  
**District II**  
811 S. First St., Artesia, NM 88210  
Phone:(575) 748-1283 Fax:(575) 748-9720  
**District III**  
1000 Rio Brazos Rd., Aztec, NM 87410  
Phone:(505) 334-6178 Fax:(505) 334-6170  
**District IV**  
1220 S. St Francis Dr., Santa Fe, NM 87505  
Phone:(505) 476-3470 Fax:(505) 476-3462

**State of New Mexico**  
**Energy, Minerals and Natural Resources**  
**Oil Conservation Division**  
**1220 S. St Francis Dr.**  
**Santa Fe, NM 87505**

CONDITIONS

Action 20296

**CONDITIONS OF APPROVAL**

Operator: ASCENT ENERGY, LLC. 1125 17th St Suite 410 Denver, CO80202		OGRID: 325830	Action Number: 20296	Action Type: C-103A
OCD Reviewer pkautz		Condition None		