

Submit a Copy To Appropriate District
Office
District I – (575) 393-6161
1625 N. French Dr., Hobbs, NM 88240
District II – (575) 748-1283
811 S. First St., Artesia, NM 88210
District III – (505) 334-6178
1000 Rio Brazos Rd., Aztec, NM 87410
District IV – (505) 476-3460
1220 S. St. Francis Dr., Santa Fe, NM
87505

State of New Mexico
Energy, Minerals and Natural Resources

Form C-103
Revised July 18, 2013

OIL CONSERVATION DIVISION
1220 South St. Francis Dr.
Santa Fe, NM 87505

SUNDRY NOTICES AND REPORTS ON WELLS (DO NOT USE THIS FORM FOR PROPOSALS TO DRILL OR TO DEEPEN OR PLUG BACK TO A DIFFERENT RESERVOIR. USE "APPLICATION FOR PERMIT" (FORM C-101) FOR SUCH PROPOSALS.) 1. Type of Well: Oil Well <input type="checkbox"/> Gas Well <input type="checkbox"/> Other <input type="checkbox"/>		WELL API NO. 30-045-32690 5. Indicate Type of Lease STATE <input type="checkbox"/> FEE <input checked="" type="checkbox"/> 6. State Oil & Gas Lease No.
2. Name of Operator HILCORP ENERGY COMPANY		7. Lease Name or Unit Agreement Name ALAMO 22
3. Address of Operator 382 Road 3100, Aztec, NM 87410		8. Well Number 8
4. Well Location Unit Letter <u>H</u> : <u>2235</u> feet from the <u>North</u> line and <u>660</u> feet from the <u>East</u> line Section <u>22</u> Township <u>31N</u> Range <u>13W</u> NMPM County <u>San Juan</u>		9. OGRID Number 372171
11. Elevation (Show whether DR, RKB, RT, GR, etc.) 5607' GL		10. Pool name or Wildcat Basin Dakota

12. Check Appropriate Box to Indicate Nature of Notice, Report or Other Data

NOTICE OF INTENTION TO:		SUBSEQUENT REPORT OF:	
PERFORM REMEDIAL WORK <input type="checkbox"/>	PLUG AND ABANDON <input type="checkbox"/>	REMEDIAL WORK <input type="checkbox"/>	ALTERING CASING <input type="checkbox"/>
TEMPORARILY ABANDON <input type="checkbox"/>	CHANGE PLANS <input type="checkbox"/>	COMMENCE DRILLING OPNS. <input type="checkbox"/>	P AND A <input checked="" type="checkbox"/>
PULL OR ALTER CASING <input type="checkbox"/>	MULTIPLE COMPL <input type="checkbox"/>	CASING/CEMENT JOB <input type="checkbox"/>	
DOWNHOLE COMMINGLE <input type="checkbox"/>			
CLOSED-LOOP SYSTEM <input type="checkbox"/>			
OTHER: <input type="checkbox"/>		OTHER: <input type="checkbox"/>	

13. Describe proposed or completed operations. (Clearly state all pertinent details, and give pertinent dates, including estimated date of starting any proposed work). SEE RULE 19.15.7.14 NMAC. For Multiple Completions: Attach wellbore diagram of proposed completion or recompletion.

The subject well was P&A'd on 8/24/2020 per the attached report.

Spud Date:

Rig Release Date:

I hereby certify that the information above is true and complete to the best of my knowledge and belief.

SIGNATURE Amanda Walker TITLE Operations/Regulatory Technician – Sr. DATE 8/28/2020

Type or print name Amanda Walker E-mail address: mwalker@hilcorp.com PHONE: (505)324-5122

For State Use Only

APPROVED BY: Brandon Powell TITLE District III Supervisor DATE 10/19/2020

Conditions of Approval (if any):

Lease: FEE
P&A Subsequent

8/10/2020: Email sent to NMOCD for changes on P&A plan prior to RU:

1). No issues with Plug #1 2). COA calls for inside/out plug for the Mancos portion of Plug #2, however there is cement behind pipe in the 7" to 3365' (CBL run 1/4/06) and the 4-1/2" liner to 4050' (top of liner at 4024', CBL 2/22/06). We would like to keep this plug as a balanced plug (5576-3974', 138 sx) 3). COA calls for an inside/out plug across the Chacra, however, if possible, we would like to plug this thru the packer. DV tool is at 2003', TOC behind the 7" is 3365'. Our proposal here is to split this plug into 2 plugs. The MV plug will be a balanced plug across the MV top at 3420' (3470-3370', 21 sx). We can then perforate at 2725' and perform an inside out plug across the Chacra top at 2675' (2725-2625', 50 sx) 4). Per the COA, extend Plug #4 to cover the OCD FRC top at 1425', new TOC will be 1350'. We will increase the plug above the CICR by 53 sx. 5). No changes to Plug #5 6). No changes to Plug #6. Updates to # 3 provided by Brandon Powell, in addition to a request to a PT prior to running cmt or tag.

8/12/2020: MIRU. POOH LD ENTIRE ROD STRING. LD PMP. ND WH. NU BOPE & FUNCTION TST, TST GOOD. UNSEAT 2 3/8" SHORT STRING, LD BHA. SIW. SL. SDFN.

8/13/2020: TIH W/SHORT STRING, TAG MINOR FILL ON TOP OF PKR @ 1891'. CO W/AIR UNIT, UNTIL RETURNS WERE CLEAN. TOO H WHILE SCANNING SHORT STRING. PULD TBG HANGR ON LONG STRING. POOH W/LONG STRING. SIW. SL. SDFN.

8/14/2020: RU PWR SWVL. PU 1 JT & TRAVELED THROUGH PKR BORE ENGAGING PLUCKER GRAPPLE & BRING MILL TO OUTSIDE SLIPS. BROUGHT ON AIR UNIT. EST CIRC, BEGAN MILLING OVER PKR SLIPS. MILLED 26" UNTIL PKR WAS MOVING. CONT TO MILL UNTIL PLUCKER RELEASED FROM PKR. RIH 15' & TAGGED UP, ATTEMPT TO REENGAGE PKR, GRAPPLE NOT ENGAGING. POOH W/TBG STRING & FISHING ASSM. GRAPPLE DISENGAGED. TIH W/TOOLS ABV PERFS. SIW. SL. SDFWE.

8/17/2020: TIH W/PLUCKER BHA. RU PWR SWVL @ 1916'. BROUGHT ON AIR UNIT. EST CIRC. MILLED & CHASED PKR TO 1978'. TIH TO 2010' & TAGGED & ENGAGED PKR. WORKED JARS & PKR FREE'D UP. DID NOT RECOVER. RERAN BHA, TAGGED PKR @ 2202'. WORKED PKR UP TO 2070' & LOCKED UP. BROUGHT ON AIR UNIT, EST CIRC, MILLED ON PKR FOR 1 HOUR. PKR FREE & MOVING. POOH W/ENTIRE STRING. RECOVERED ENTIRE FISH. TIH W/FISH TOOLS & COLLARS. LD COLLARS. SIW. SL. SDFN.

8/18/2020: MIRU CMT EQUIPMENT. TIH TAG TOC @ 5463'. MIX AND PUMP **PLUG #1**. (DK PLUG). WOC. TOO H. L/D CR SET TOOL. TIH AND TAG AFTER 4 HR SET TIME. TAG TOC AT 6115'. L/D 17 JTS. MIX AND PUMP **PLUG #2** (GP PLUG) AS BLIND BALANCED PLUG TO COVER GALLUP FORMATION W/ 13 SKS 15.8 PPG 1.15 YIELD 2.66 BBLS SLURRY FROM 5591' TO 5426'. L/D 6 JTS PULLING OUT OF CEMENT. STOOD BACK 30 STANDS PULLING END OF TBG OUT OF LINER TOP. PUMP 5 BBLS FLUSH DOWN TBG STRING. WILL WOC PLUG OVER NIGHT. SIW. SL. SDFN.

UPDATE EMAIL REQUEST: 1) The NOI calls for a balanced plug on bottom to cover the DK perfs. We would like to replace Plug #1 with a CICR set at 6322' w/ a 12 sx cmt cap on top (est TOC at 6222'). 2) The NOI calls for a 1600' plug f/ 5576-3974' to cover the Gallup, TOL and Mancos – Any issues splitting this in two? If you don't have any issues, Plug 2 will be f/ 5576-5476 (12 sx) to cover the Gallup top and Plug 3 will be f/ 4642-3974' (70 sx) to cover the Mancos and TOL. Splitting these plugs will avoid some of the uncertainty of pumping a 1600' plug blind. 3) All three of these plugs will be tagged due to the FRC perfs still being exposed uphole. 4) We'll be ready to pump the first two plugs today. **APPROVAL GIVEN BY MONICA KUEHLING TO THE FOLLOWING:** Plug 1 dakota good inside – top Dakota perf = 6372 Plug 2 gallup good inside – top gallup = 5526 Plug 3 manc - top manc = 4592 - you need to perforate and do inside (Found the log where cement came to 4050 – so you are good with inside for manc and liner top). 150' plug on each -50' below top and 100' above top Tag all three and let me know where you tag on each formation before you proceed.

8/19/2020: TIH W/ 30 STANDS P/U 3 JTS AND TAG TOC AT 5463'. L/D 27 JTS OF 2 3/8" TBG BRINGING END OF TBG TO 4642". MIX AND PUMP **PLUG #3** AS MANCOS BLIND BALANCED W/ 85 SKS 15.8 PPG 1.15 YIELD 17.4 BBLS SLURRY FROM 4624' TO 3860'. L/D 26 JTS PULLING OUT OF CEMENT. STOOD BACK 40 STANDS PULLING END OF TBG ABOVE PERFS. WOC PLUG. AFTER 4 HRS CEMENT SET TIME. TIH AND TAG TOP OF CEMENT AT 3892'. L/D 13 JTS BRINGING END OF TBG TO 3542'. CIRC 80 BBLS TO ENSURE BACKSIDE FLUID WAS AT BOTTOM PERFS. MIX AND PUMP **PLUG #4** AS BLIND BALANCED PLUG TO COVER MESA VERDE FORMATION W/ 40 SKS 15.8 PPG 1.15 YIELD 8.25 BBLS SLURRY FROM 3274' TO 3542'. L/D 7 JTS PULLING OUT OF CEMENT. STAND BACK ENTIRE TBG STRING. WILL WOC PLUG OVER NIGHT. SIW. SL. SDFN.

8/20/2020: P/U 6 1/4" MILL. TIH W/ 51 STANDS P/U 2 JTS AND TAG TOC AT 3297'. L/D 22 JTS OF 2 3/8" TBG AND STOOD BACK 41 STANDS. R/U CUTTERS WIRELINE SERVICES. RIH 3 1/8" PERF GUN AND PERFORATE 4 SHOTS AT 2725'. P/U 7" CEMENT RETAINER. TIH W/ 41 STANDS P/U 1 JTS AND SET RETAINER AT 2674'. ATTEMPT TO ESTABLISH INJECTION

Lease: FEE

P&A Subsequent

RATE THROUGH PERFS. PUMPED ONLY 2 BBLS DOWN TBG STRING PRESSURED UP TO 800 PSI. CONTACTED NMOCD REP MONICA KUELING AND GOT GREEN LIGHT TO SPOT BALANCED PLUG ON TOP OF RETAINER. ESTABLISH CIRCULATION W/ 16 BBLS TO OPEN TOP PIT. MIX AND PUMP **PLUG #5** AS BALANCED W/ 29 SKS 15.8 PPG 1.15 YIELD 5.9 BBLS SLURRY FROM 2674' TO 2524'. L/D 5 JTS PULLING OUT OF CEMENT. STOOD BACK 39 STANDS PULLING COMPLETELY OUT OF THE HOLE. L/D SETTING TOOL. WOC PLUG. AFTER 4 HRS CEMENT SET TIME. TIH AND TAG TOP OF CEMENT AT 2535'. L/D 30 JTS BRINGING END OF TBG TO 1591'. ESTABLISH INJECTION RATE IN FRC PERFS AT 1 BBL/MIN 500 PSI. TRIPPED ALL THE WAY OUT OF THE HOLE. P/U 7" CEMENT RETAINER. TIH AND SET AT 1591'. PRESSURE TEST CSG STRING. TEST FAILED. MIX AND PUMP **PLUG #6** AS INSIDE OUTSIDE BALANCED PLUG TO COVER PC AND FRC FORMATION W/ 85 SKS 15.8 PPG 1.15 YIELD 17.25 BBLS SLURRY FROM 1828' TO 1325'. MIXED AND PUMP 27 SACKS BELOW RETAINER BEFORE PRESSURING UP TO 1300 PSI. STUNG OUT OF RETAINER AND PLACE REMAINING CEMENT (58 SKS ON TOP OF RETAINER) L/D 11 JTS PULLING OUT OF CEMENT. STAND BACK ENTIRE TBG STRING. L/D SETTING TOOL. WILL WOC PLUG OVER NIGHT. SIW. SL SDFN.

8/21/2020: TIH AND TAG TOP OF CEMENT AT 1293'. L/D 28 JTS BRINGING END OF TBG TO 400'. PRESSURE TEST CSG STRING. TEST FAILED. PRESSURE COMMUNICATION W/ BRADEN HEAD. MIX AND PUMP **PLUG #7** (SURFACE) W/ 101 SKS 15.8 PPG 1.15 YIELD 20.6 BBLS SLURRY. CIRC GOOD CEMENT RETURNS TO SURFACE UP 7" AND BRADEN HEAD. POOH. WASH UP EQUIPMENT. DIG OUT WELLHEAD. WOC PLUG OVER WEEKEND. SDFWE

8/24/2020: DIG OUT WELLHEAD. R/U WELDER. CUT OFF WELLHEAD. TAG TOP OF CEMENT IN CSG 12' DOWN. GOOD CEMENT RETURNS TO SURFACE IN BRADEN HEAD. WELD ON DRY HOLE MARKER. MIX AND PUMP 16 SKS 15.8 PPG 1.15 YIELD AND TOP OFF CELLAR. WASH UP EQUIPMENT.

RDRR @ 09:00 AM

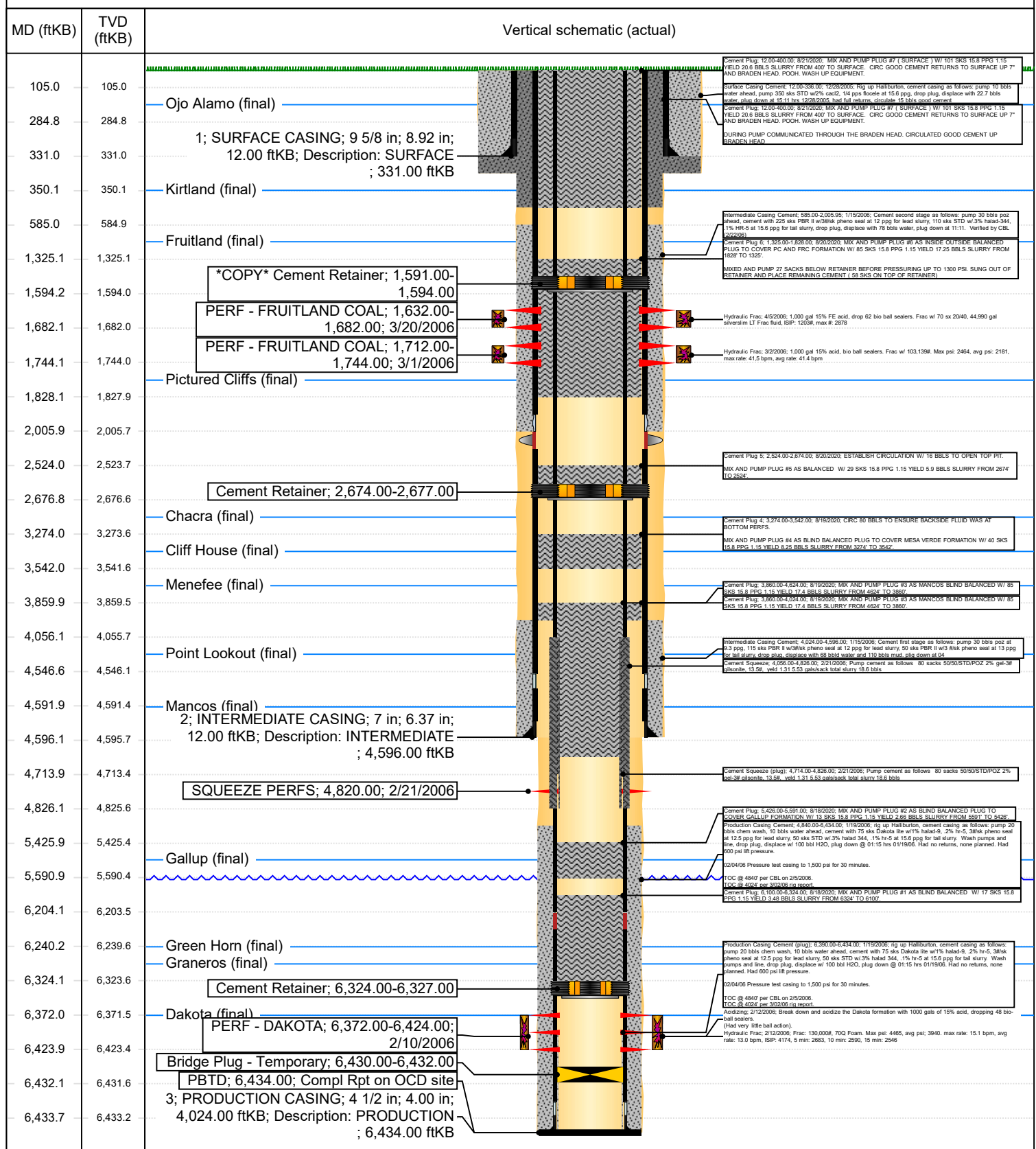


Current Schematic

Well Name: ALAMO 22 #8

API / UWI 3004532690	Surface Legal Location H-22-31N-13W	Field Name BASIN	Route 0202	State/Province NEW MEXICO	Well Configuration Type Vertical
Ground Elevation (ft) 5,607.00	Original KB/RT Elevation (ft) 5,619.00	KB-Ground Distance (ft) 12.00	KB-Casing Flange Distance (ft)	KB-Tubing Hanger Distance (ft)	

Vertical, ORIGINAL HOLE, 8/25/2020 8:03:28 AM



District I
1625 N. French Dr., Hobbs, NM 88240
Phone:(575) 393-6161 Fax:(575) 393-0720
District II
811 S. First St., Artesia, NM 88210
Phone:(575) 748-1283 Fax:(575) 748-9720
District III
1000 Rio Brazos Rd., Aztec, NM 87410
Phone:(505) 334-6178 Fax:(505) 334-6170
District IV
1220 S. St Francis Dr., Santa Fe, NM 87505
Phone:(505) 476-3470 Fax:(505) 476-3462

State of New Mexico
Energy, Minerals and Natural Resources
Oil Conservation Division
1220 S. St Francis Dr.
Santa Fe, NM 87505

CONDITIONS

Action 22066

CONDITIONS OF APPROVAL

Operator:	HILCORP ENERGY COMPANY	1111 Travis Street	Houston, TX77002	OGRID:	372171	Action Number:	22066	Action Type:	C-103P
OCD Reviewer	Condition								
ahvermersch	None								