

Office
 District I – (575) 393-6161
 1625 N. French Dr., Hobbs, NM 88240
 District II – (575) 748-1283
 811 S. First St., Artesia, NM 88210
 District III – (505) 334-6178
 1000 Rio Brazos Rd., Aztec, NM 87410
 District IV – (505) 476-3460
 1220 S. St. Francis Dr., Santa Fe, NM
 87505

State of New Mexico
 Energy, Minerals and Natural Resources

Form C-103
 Revised July 18, 2013

OIL CONSERVATION DIVISION
 1220 South St. Francis Dr.
 Santa Fe, NM 87505

| | | |
|--|--|---|
| SUNDRY NOTICES AND REPORTS ON WELLS (DO NOT USE THIS FORM FOR PROPOSALS TO DRILL OR TO DEEPEN OR PLUG BACK TO A DIFFERENT RESERVOIR. USE "APPLICATION FOR PERMIT" (FORM C-101) FOR SUCH PROPOSALS.) | | WELL API NO. 30-025-38576 |
| 1. Type of Well: Oil Well <input type="checkbox"/> Gas Well <input type="checkbox"/> Other: Acid Gas Injection <input checked="" type="checkbox"/> | | 5. Indicate Type of Lease STATE <input checked="" type="checkbox"/> FEE <input type="checkbox"/> |
| 2. Name of Operator DCP Midstream LP | | 6. State Oil & Gas Lease No. V07530-0001 |
| 3. Address of Operator 370 17 th Street, Suite 2500, Denver, CO 80202 | | 7. Lease Name or Unit Agreement Name Linam AGI |
| 4. Well Location Unit Letter <u>K</u> : <u>1980</u> feet from the <u>South</u> line and <u>1980</u> feet from the <u>West</u> line Section <u>30</u> Township <u>18S</u> Range <u>37E</u> NMPM County <u>Lea</u> | | 8. Well Number #1 |
| 11. Elevation (Show whether DR, RKB, RT, GR, etc.): 3736 GR | | 9. OGRID Number 36785 |
| | | 10. Pool name or Wildcat AGI - Wolfcamp |

12. Check Appropriate Box to Indicate Nature of Notice, Report or Other Data

NOTICE OF INTENTION TO:

PERFORM REMEDIAL WORK ☐ PLUG AND ABANDON ☐
 TEMPORARILY ABANDON ☐ CHANGE PLANS ☐
 PULL OR ALTER CASING ☐ MULTIPLE COMPL ☐
 DOWNHOLE COMMINGLE ☐
 CLOSED-LOOP SYSTEM ☐
 OTHER: ☐

SUBSEQUENT REPORT OF:

REMEDIAL WORK ☐ ALTERING CASING ☐
 COMMENCE DRILLING OPNS. ☐ P AND A ☐
 CASING/CEMENT JOB ☐
 OTHER: (Mechanical Integrity Test) ☒

13. Describe proposed or completed operations. (Clearly state all pertinent details, and give pertinent dates, including estimated date of starting any proposed work). SEE RULE 19.15.7.14 NMAC. For Multiple Completions: Attach wellbore diagram of proposed completion or recompletion.

The MIT was conducted on Tuesday, February 9, 2021 at 2:30 pm (MT). No NMOC D representatives were on site due to State Covid-19 guidelines. A Bradenhead Test (BHT) was also performed; below is a step-by-step summary with results:

- The annular space pressure between the production casing and tubing was 14 psi at the casing valve prior to the start of the MIT; treated acid gas (TAG) was being injected into the tubing at 5.3 MMSCFD and 1,708 psi.
- A line from the diesel pump truck was attached to the well head valve, with a separate line to a chart recorder, calibrated on 1/4/21. The annular space pressure was bled to 0 psi prior to placing the pen onto the chart.
- At 3:06 pm 2.5 bbls of diesel from the truck was added to the annular space, increasing the pressure to 630 psi.
- At 3:11 pm the chart recorder and well were isolated from the pump truck and the MIT began.
- At 3:43 pm (32 minutes) the annular space pressure was 605 psi; a decrease of 25 psi or 4.0%.
- Diesel was then bled from the annular space into the truck to 0 psi and the chart was removed from the recorder. An operating pressure of 313 psi was left on the annular space prior to disconnection from the truck.

In addition to the MIT, a BHT was conducted by monitoring the intermediate and surface casing annular space pressures during the MIT. The MIT pressure chart, BHT documentation, and chart recorder calibration sheet are attached.

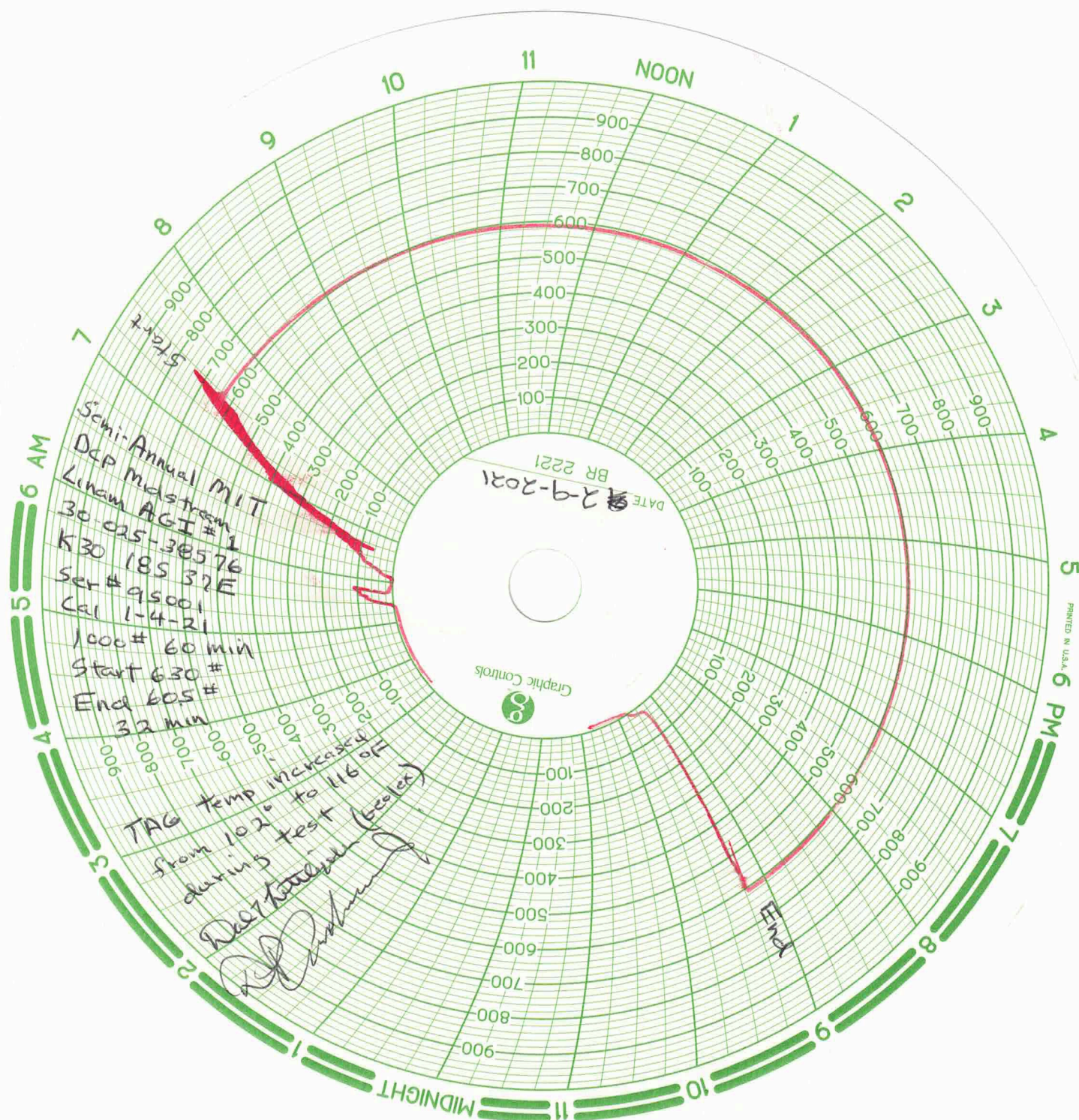
I hereby certify that the information above is true and complete to the best of my knowledge and belief.

SIGNATURE Dale T. Littlejohn TITLE Consultant to DCP Midstream DATE 2-10-21

Type or print name Dale T. Littlejohn E-mail address: dale@geolex.com PHONE: 505-842-8000

For State Use Only

APPROVED BY: Phillip R. Letz TITLE UIC Manager DATE 04/07/2021
 Conditions of Approval (if any):



District I
1625 N. French Dr., Hobbs, NM 88240
Phone: (575) 393-6161 Fax: (575) 393-0720

State of New Mexico
Energy, Minerals and Natural Resources Department
Oil Conservation Division Hobbs District Office

BRADENHEAD TEST REPORT

| | | |
|--|--|-----------------------------------|
| Operator Name DCP MIDSTREAM LP | | API Number 30-025-38576 |
| Property Name LINAM AGI | | Well No. 1 |

7. Surface Location

| | | | | | | | | | |
|----------------------|----------------------|-------------------------|----------------------|--|--------------------------|----------------------|--------------------------|----------------------|----------------------|
| UL - Lot K | Section 30 | Township 18-S | Range 37-E | | Feet from 1980 | N/S Line S | Feet From 1980 | E/W Line W | County LEA |
|----------------------|----------------------|-------------------------|----------------------|--|--------------------------|----------------------|--------------------------|----------------------|----------------------|

Well Status

| | | | | | | | | |
|------------------|--------------------------|----------------|--------------------------|--------------------------------------|-----------------|-----------------|-----|--------------------------|
| TA'D WELL YES | <input type="radio"/> NO | SHUT-IN YES | <input type="radio"/> NO | <input checked="" type="radio"/> INJ | INJECTOR SWD | PRODUCER OIL | GAS | DATE February 9, 2021 |
|------------------|--------------------------|----------------|--------------------------|--------------------------------------|-----------------|-----------------|-----|--------------------------|

OBSERVED DATA

| | (A)Surface | (B)Interm(1) | (C)Interm(2) | (D)Prod Csng | (E)Tubing |
|-----------------------------|------------|--------------|--------------|--------------|---------------|
| Pressure | 62 to 62 | 30 to 31 | NA | 630 to 605 | 1,708 |
| Flow Characteristics | | | | | |
| Puff | Y / N | Y / N | Y / N | Y / N | CO2 ____ |
| Steady Flow | Y / N | Y / N | Y / N | Y / N | WTR ____ |
| Surges | Y / N | Y / N | Y / N | Y / N | GAS ____ |
| Down to nothing | Y / N | Y / N | Y / N | Y / N | Type of Fluid |
| Gas or Oil | Y / N | Y / N | Y / N | Y / N | Injected for |
| Water | Y / N | Y / N | Y / N | Y / N | Waterflood if |
| | | | | | applies. |

Remarks – Please state for each string (A,B,C,D,E) pertinent information regarding bleed down or continuous build up if applies.

Maclaskey Trucking (Junior Anderson)

Serial No. 95001

Calibration Date : 1/4/21

| | | |
|--|-----------------------|---------------------------|
| Signature:  | | OIL CONSERVATION DIVISION |
| Printed name: Dale T. Littlejohn | | Entered into RBDMS |
| Title: Consultant to DCP Midstream | | Re-test |
| E-mail Address: dale@geolex.com | | |
| Date: 2/10/21 | Phone: (505) 842-8000 | |
| Witness: | | |

INSTRUCTIONS ON BACK OF THIS FORM

DCP LINAM AGI #1 **WELLBORE SCHEMATIC (WORKOVER)**

Location: 1980' FSL, 1980' FWL
STR 30-T18S-R37E
County, St.: LEA, NEW MEXICO

SURFACE CASING:
 13 3/8", 48.00#/ft, H40, STC at 530'

INTERMEDIATE CASING:
 9 5/8", 40.00#/ft, J55, LTC at 4212'

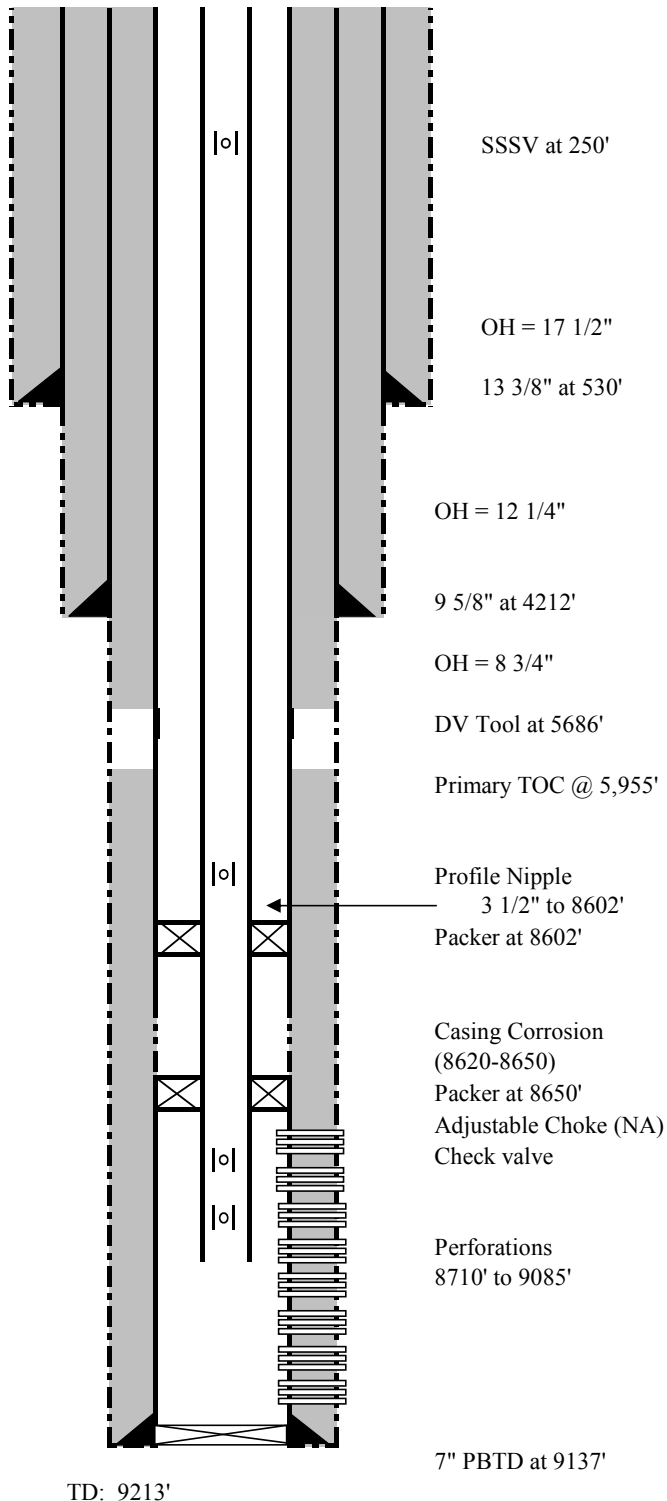
PRODUCTION CASING:
 7", 26.00#/ft, L80, STC at 9200'
 PBTD = 9137'

TUBING:
 Subsurface Safety Valve at 250 ft
 3 1/2", 9.2#/ft, L80, Hunting SLF to 8304'
 3 1/2", 9.2 #/ft., G3 CRA, VAMTOP from 8302' to 8602'
 3 1/2", 9.2 #/ft., G3 CRA, VAMTOP 20'-30' between packers

PACKER:
 Permanent Production Packer (2)
 Upper Packer Placement Subject to Pipe Scanner Results
 of the 7" Casing
 Adjustable Choke
 Check valve

PERFORATIONS:

| Primary Target | Secondary Target |
|--------------------|------------------|
| Lower Bone Springs | Brushy Canyon |
| 8710' - 8730' | 5000' to 5300' |
| 8755' - 8765' | (Not perforated) |
| 8780' - 8795' | |
| 8780' - 8890' | |
| 8925' - 8930' | |
| 8945' - 8975' | |
| 8985' - 9000' | |
| 9045' - 9085' | |
| | |
| | |
| | |



MACLASKEY OILFIELD SERVICES

5900 WEST LOVINGTON HWY. HOBBS, NM 88240
505-395-1016

THIS IS TO CERTIFY THAT:

DATE: 1-4-2021

I, Albert Rodriguez METER TECHNICIAN FOR MACLASKEY OILFIELD
SERVICES, INC. HAS CHECKED THE CALIBRATION ON THE FOLLOWING
INSTRUMENT. 1000 PRESSURE RECORDER

SERIAL NUMBER

95001

TESTED AT THESE POINTS.

| PRESSURE <u>500</u> | | | PRESSURE <u>1000</u> | | |
|---------------------|------------|------------|----------------------|-------------|----------|
| TEST | AS FOUND | CORRECTED | TEST | AS FOUND | CORRECT |
| <u>0</u> | <u>100</u> | <u>100</u> | <u>500</u> | <u>600</u> | <u>✓</u> |
| <u>100</u> | <u>200</u> | <u>200</u> | <u>600</u> | <u>700</u> | <u>✓</u> |
| <u>200</u> | <u>300</u> | <u>300</u> | <u>700</u> | <u>800</u> | <u>✓</u> |
| <u>300</u> | <u>400</u> | <u>400</u> | <u>800</u> | <u>900</u> | <u>✓</u> |
| <u>400</u> | <u>500</u> | <u>500</u> | <u>900</u> | <u>1000</u> | <u>✓</u> |

REMARKS:

SIGNED: Albert Rodriguez

District I

1625 N. French Dr., Hobbs, NM 88240
Phone:(575) 393-6161 Fax:(575) 393-0720

District II

811 S. First St., Artesia, NM 88210
Phone:(575) 748-1283 Fax:(575) 748-9720

District III

1000 Rio Brazos Rd., Aztec, NM 87410
Phone:(505) 334-6178 Fax:(505) 334-6170

District IV

1220 S. St Francis Dr., Santa Fe, NM 87505
Phone:(505) 476-3470 Fax:(505) 476-3462

State of New Mexico
Energy, Minerals and Natural Resources
Oil Conservation Division
1220 S. St Francis Dr.
Santa Fe, NM 87505

CONDITIONS

Action 21586

CONDITIONS OF APPROVAL

| | | | | | | | | | |
|-----------|---------------------------|-----------------------------|-----------------|--------|-------|----------------|-------|--------------|--------|
| Operator: | DCP OPERATING COMPANY, LP | 370 17th Street, Suite 2500 | Denver, CO80202 | OGRID: | 36785 | Action Number: | 21586 | Action Type: | C-103Z |
|-----------|---------------------------|-----------------------------|-----------------|--------|-------|----------------|-------|--------------|--------|

| | |
|--------------|-----------|
| OCD Reviewer | Condition |
| pgoetze | None |