

NMOCD Rec'd: 10/19/2020

Form C-103

Revised July 18, 2013

Submit 1 Copy To Appropriate District Office
 District I – (575) 393-6161
 1625 N. French Dr., Hobbs, NM 88240
 District II – (575) 748-1283
 811 S. First St., Artesia, NM 88210
 District III – (505) 334-6178
 1000 Rio Brazos Rd., Aztec, NM 87410
 District IV – (505) 476-3460
 1220 S. St. Francis Dr., Santa Fe, NM 87505

State of New Mexico
 Energy, Minerals and Natural Resources

OIL CONSERVATION DIVISION
 1220 South St. Francis Dr.
 Santa Fe, NM 87505

WELL API NO.	30-015-29773
5. Indicate Type of Lease STATE <input checked="" type="checkbox"/> FEE <input type="checkbox"/>	
6. State Oil & Gas Lease No. K-4473-1	
7. Lease Name or Unit Agreement Name Avalon 15 State Com	
8. Well Number 1	
9. OGRID Number 329748	
10. Pool name or Wildcat Avalon Morrow 70920	

SUNDRY NOTICES AND REPORTS ON WELLS
 (DO NOT USE THIS FORM FOR PROPOSALS TO DRILL OR TO DEEPEN OR PLUG BACK TO A DIFFERENT RESERVOIR. USE "APPLICATION FOR PERMIT" (FORM C-101) FOR SUCH PROPOSALS.)

1. Type of Well: Oil Well ☐ Gas Well ☒ Other

2. Name of Operator

Tascosa Energy Partners, LLC

3. Address of Operator

901 Missouri, Midland, Texas 79701

4. Well Location

Unit Letter C : 660 feet from the North line and 1650 feet from the West line
 Section 15 Township 21S Range 26E NMPM County Eddy

11. Elevation (Show whether DR, RKB, RT, GR, etc.)
 3192' GL- KB 3206'

12. Check Appropriate Box to Indicate Nature of Notice, Report or Other Data

NOTICE OF INTENTION TO:

PERFORM REMEDIAL WORK ☐ PLUG AND ABANDON ☐
 TEMPORARILY ABANDON ☐ CHANGE PLANS ☐
 PULL OR ALTER CASING ☐ MULTIPLE COMPL ☐
 DOWNHOLE COMMINGLE ☐ PA Morrow; Recomplete in ☐
 CLOSED-LOOP SYSTEM ☐
 OTHER: ☐

SUBSEQUENT REPORT OF:

REMEDIAL WORK ☒ ALTERING CASING ☐
 COMMENCE DRILLING OPNS. ☐ P AND A ☒
 CASING/CEMENT JOB ☒

OTHER: ☐

13. Describe proposed or completed operations. (Clearly state all pertinent details, and give pertinent dates, including estimated date of starting any proposed work). SEE RULE 19.15.7.14 NMAC. For Multiple Completions: Attach wellbore diagram of proposed completion or recompletion.

See Attached Description of Operations Chrono:

Spud Date:

Rig Release Date:

I hereby certify that the information above is true and complete to the best of my knowledge and belief.

SIGNATURE Alyssa McNear TITLE Engineering Manager DATE 10/14/20

Type or print name Alyssa McNear E-mail address: adavanzo@tascosae.com PHONE: (720) 244-4417
 For State Use Only

APPROVED BY:

Accepted for record – NMOCD gc 10/23/2020

DATE

TASCOSA ENERGY PARTNERS,LLC 329748

Avalon 15 C State Com # 1

660' FNL & 1650 FWL
SECTION 15, T-21-S, R-26-E
Eddy County, New Mexico
API # 30-015-29773

Wolfcamp Workover

Target Gross Interval **8406-8589**

Integrity WSU # 103

13 3/8" Csg @ 314 ft

8-5/8" Csg @ 2,193"

8 5/8" Stg Tool+ECP 1297

5-1/2" 17# J&N Csg 11,109

5 1/2" Stg Tool + ECP 2123'

Mrw perfs 10,880-910 Abnd

Mrw perfs 10740-10770 Abnd

CIBP 10,870

CICR @ 10,315'

CIBP @ 10,311 + 35' cmt

2020_08-04 MIRU Integrity Rig # 103. N/D Tree. N/U BOPE. P/U on Tubing Hanger. Tubing was parted. Wgt 20K. POH recovered 137 jts 2-3/8" N-80 EUE. 22 jts L/D due to badly pits & holes. (4250' recovered). P/U 4-11/16 OS x 3-1/16" basket grapple TIH to obstruction @ 2,600'. Secure Well & SDFN.

2020_08-05 L/D 2-3/8" tubing. Chng Rams. P/U 2-7/8" work string. P/U 4-3/4" mule shoe + 4-3/4" string mill + fishing BHA. Tag @ 2,600 ft. Work thru bad spot @ 2,600 ft. POH. RIH w/ 3-3/4" OS + fishing assembly. Work over fish top @ 4,322'. Failed to hook up. SW&SDFN

2020_08-06 POH w/ fishing tools. RIH w/ new OS + 3-1/16 spiral grapple + fishing assembly. Work over Fish @ 4,326'. Could not latch fish. POH RIH w/ new overshot + 3-1/16" grapple to 4,321'. Could not work over fish. POH SW & SDFN.

2020_08-07 RIH w/ shoe + WP + Concave internal mill. Tag fish @ 4,321 ft. worked over fish from 4,321' to 4,327' (6'). Circ Clean. POH. Shoe worn on Crown. SW & SDFN.

2020_08-08 RIH w/ 4-3/4" Flat Btm Shoe + WP w/ internal concave mill to 2600'. Work Thru spot & tag fish @ 4,327'. Could not circulate. Work shoe from 4,327' to 4,333' (6') pumping long way without returns. P/U to 2541 SW & SDFN.

2020_08-09 RIH w/ Shoe to 2600'. Work thru spot and stacked out @ 2990'. POH to view shoe. Shoe okay. RIH w/ mule shoe and string mill. Work same spot 2550-2730'. No issues. Tag fish @ 4,321'. POH to 2,660'. SW&SDFN.

2020_08-10 Shut down.

2020_08-11 Run CIL 4332' to surface. Csg parted 2,592-2,632 WLM.

2020_08-(12-17) W/O HES csg alignment tool.

2020_08-18 Set RBP @ 3,577' + 11' sand. Secure Well & SDFN.

2020_08-19 Set Alignment tool 2,644' to 2,580'. Alignment retainer @ 2,580.5'. Pressure casing to 500 psi above retainer. Cmt alignment tool w/ 600 sks C Thixo 14.8 ppg. Final pressure 330 psi.

2020_08-20 Pressure up job to 550 psi. Pull out of retainer and POH. RIH w/ composite cement retainer. Set same @ 2,060'. Cemented casing & Alignment w/ 250 sks C 14.8 ppg. Final pressure 600 psi. POH w/ stinger & SW&SDFN.

2020_08-21 TIH w/ 4-3/4" bit and BHA. Tag cmt @ 2,006 ft. Drill cement & retainer to 2,583. Change out reverse unit pump. SW&SDFN

2020_08-22 Drilling alignment tool from 2,583 to 2,725'. Full returns. POH w/ bit & BHA. LD stabilizer. SW&SDFN

2020_08-23 Shut down Sunday

2020_08-24 RIH w/ 4-3/4" bit + BHA. Tag cement @ 2,725 ft. Drill cement to 2780'. Full returns. Fell out of cement. Wash to 3,562 ft. RBP @ 3577 ft + 11 ft sand. POH. Bit had band strap around cones. SW & SDFN.

2020_08-25 RIH w/ RBP retrieving tool. Could not get below 2,617'. POH. RIH w/ retrieving tool & 4-3/4" string mill. Work to 3560'. Could not get to RBP @ 3,577. POH. No tight spots while POH. P/U 4-3/4" bit & BHA. TIH. Wash to RBP @ 3,577'. Circ Clean. POH. RIH w/ retrieving tool. Release RBP. No pressure below. POH w/ RBP. SW & SDFN.

2020_08-26 RIH w/ 4-3/4" shoe + internal 3-3/4" concave mill. Tag @ 3,577'. Wash down 23 jts to TOF @ 4,333'. Dress off fish to 4,335'. POH. RIH w/ 4-11/16" OS w/ 2-3/8" grapple + Fishing BHA. Latch fish. Rig Repair. SW & SDFN.

2020_08-27 R/U wireline. TIH w/ gauge & jars. Could not get into Fish @ 4,333'. R/D wireline. RIH w/ shoe & wash/ream over fish from 4,335 ft to 4,344' (9'). Metal & cement in returns. Circ Clean. P/U above fish top. SW & SDFN.

TASCOSA ENERGY PARTNERS,LLC 329748

Avalon 15 C State Com # 1

660' FNL & 1650 FWL
SECTION 15, T-21-S, R-26-E
Eddy County, New Mexico
API # 30-015-29773

Wolfcamp Workover

Target Gross Interval **8406-8589**

Integrity WSU # 103

13 3/8" Csg @ 314 ft

8-5/8" Csg @ 2,193"

8 5/8" Stg Tool+ECP 1297

5-1/2" 17# J&N Csg 11,109

5 1/2" Stg Tool + ECP 2123'

Mrw perfs 10,880-910 Abnd

Mrw perfs 10740-10770 Abnd

CIBP 10,870

CICR @ 10,315'

CIBP @ 10,311 + 35' cmt

2020_08-28 Continue wash/ream over fish from 4,344' to 4,349' (5'). Stop making progress. POH. Change out shoe. RIH w/ new shoe and same BHA. Work from 4,349' to 4,401'. (52'). Cement & metal shavings in returns. POH. Shoe worn out. SW & SDFN.

2020_08-29 RIH w/ 4-5/8" OS + 2-3/8" grapple & BHA. Latch fish @ 4,335'. 9" stretch. Worked tubing. Tubing parted. POH & recovered 12.6' tubing plugged w/ cement. RIH w/ 4-3/4" shoe + Fishing BHA. Tag fish @ 4,348'. Wash/Ream from 4348- 4,525'. Fell out of cement. Continue in hole to 4,562'. Circulate. POH. SW & SDFN

2020_08-30 RIH w/ 4-5/8" OS + 2-3/8" grapple + Fishing assembly. Could not catch fish. POH. SW & SDFN.

2020_08-31 RIH w/ concave mill + Fishing assembly. Tag fish top @ 4,355'. Mill tubing from 4,355' to 4,362' (7'). Full returns. POH. RIH w/ Overshot. Latch fish. Pull 35K over. No movement. Release OS & POH. TOF 4,362'. SW & SDFN.

2020_09-01 RIH w/ Shoe + 12 jts WP + BHA. Work over fish top @ 4,362'. Wash / Ream to 4,732'. POH w/ shoe. RIH w/ 4-3/4" OS and Hill Side Sub + Fishing Assembly. SW & SDFN due to bad weather.

2020_09-02 Latch fish @ 4,362'. 9" stretch only. WL could not get below 4,717' w/ string shot for back off. Pipe twisted off while work down torque. POH w/ wireline. POH w/ OS. Recovered (272') 2-3/4" fish. New fish top 4,634'.

2020_09-03 RIH w/ 4-3/4" shoe + 12 jts WP + fishing BHA. Tag TOF @ 4,634'. Work down to 4,732'. Wash & ream from 4,732' to 5004'. Cement & small amount of metal in returns. POH w/ shoe. Found 228' tubing wedged in wash pipe. Remove same. New TOF 4,862'. RIH w/ shoe and WP to 1200'. SW & SD for Holiday.

2020_09-(04-07) Shut down for Labor Day weekend

2020_09-08 RIH w/ 4-3/4" shoe + 12 jts WP from 1200' to 2,615'. Could not get thru spot @ 2,615'. POH. RIH w/ string mill (4-3/4"). Work thru spot. POH. RIH w/ shoe & wash pipe. Tag TOF @ 4,862'. Wash & ream from 4862 to 5234' (bottom out wash pipe). POH. SW&SDFN

2020_09-09 RIH w/ OS dressed w/ 2-3/8" grapples + Fishing BHA. Tag TOF @ 4,862'. Latch fish. On 9" of stretch w/ 50K over pull. Jarred Fish free. POH. Recovered 2 pieces of 2-3/8" tubing + 3 full joints. Total (130' recovered). Tubing full of cement. RIH w/ OS w/ 2-3/8" grapples + Fishing BHA. Latch fish @ 4992'. Pull 50K over string weight. Tubing parted. POH. Recovered. 27' of tubing with body break. TIH w/ OS w/ 2-3/8" grapples + Fishing BHA. Latch fish @ 5,019'. Jar free. POH w/ 203' fish. New TOF @ 5,222 ft. SW & SDFN.

2020_09-10 RIH w/ shoe + 12 jts WP + BHA. Work over TOF @ 5,222 ft. Tag cement @ 5,234'. Wash & Ream 5234' to 5,350'. Fell out of cement @ 5,350'. Wash down to 5,584 (bottom out wash pipe). POH w/ WP & BHA. RIH w/ OS dressed w/ 2-3/8" grapples + fishing BHA. Latch fish @ 5,222'. Pull 50K & parted tubing. POH. Recovered 26 jts + 1 piece 2-3/8" tubing (828' fish). TOF 6,050 ft. 12 jts of tubing filled w/ cement. Cement 5-1/2" x 2-3/8" annulus gone @ 5,350 ft. Cement inside tubing gone at 5,616'. SW & SDFN.

2020_09-11 RIH w/ 3-3/4" OS w/ 2-3/8" grapple + Fishing BHA. Latch fish @ 6050 ft R/U Wireline. Cut tubing @ 10,330'. R/D WL. POH & L/D 136 jts of 2-3/8" tubing (4,284' recovered). TOF @ 10,330 ft. SW & SDFN.

2020_09-(12-13) SDFWE

2020_09-14 RIH w/ mule shoe and string mill. Dress tight spot 2,615' & 4,350'. RIH to Fish top @ 10,330 ft. POH L/D BHA. SW & SDFN.

2020_09-15 R/U wireline. Run RCBL & CIL logs. TOC 5,960 ft per CBL. RD wireline.

2020_09-16 RIH w/ OS dressed w/ 2-3/8" grapples + fishing BHA. Tag fill above fish top @ 10,320 ft. Wash down to fish @ 10,330'. Could not latch fish. POH. No recovery. SW & SDFN

2020_09-17 L/D fishing tools. Release Reverse package. Clean out Reverse Pit. Release Fishing tools.

2020_09-(18-21) Shut down for Long Weekend.

TASCOSA ENERGY PARTNERS,LLC 329748

Avalon 15 C State Com # 1

660' FNL & 1650 FWL

SECTION 15, T-21-S, R-26-E

Eddy County, New Mexico

API # 30-015-29773

Wolfcamp Workover

Target Gross Interval **8406-8589****Integrity WSU # 103****13 3/8" Csg @ 314 ft**

8-5/8" Csg @ 2,193"

8 5/8" Stg Tool+ECP 1297

5-1/2" 17# J&N Csg 11,109

5 1/2" Stg Tool + ECP 2123'

Mrw perfs 10,880-910 Abnd

Mrw perfs 10740-10770 Abnd

CIBP 10,870

CICR @ 10,315'

CIBP @ 10,311 + 35' cmt

2020_09-22 RIH w/ Cement Retainer on workstring. Tag TOF @ 10,330. Could not set retainer. POH.

2020_09-23 RIH w/ new Cement Retainer on work string. Set Same @ 10,315'. Test tubing to 3,500 psi. Pressure up on fish/morrow perfs to 500 psi for 23 mins. Okay. Pressure up to 1000 psi on fish / morrow perfs. Okay. POH w/ retainer stinger.

2020_09-24 R/U wireline. Set CIBP @ 10,311 ft. Cap w/ 35' cement. R/D wireline. Morrow Plug & Abandoned okayed by State Rep Gilbert Cordero.

2020_09-(25-29) Shut Down for Long Weekend w/o NMOCD plug back approval and or delayed C-101 Approval. Submitted 9-1-2020 via upload portal including \$500 fee. Original request sent in on Sundry mailed prior to start of operation. We were Informed by NMOCD that we must upload Sundry to the portal. We then tried to upload sundry and were informed we must to a C-101 + \$500 to plug back. C-101 was uploaded Sept 1st but wasn't reviewed until Tuesday the 29th?

Avalon 15 C State Com # 1 (29773)

Location: **Section 15, T21S, R26E _Eddy County, New Mexico**

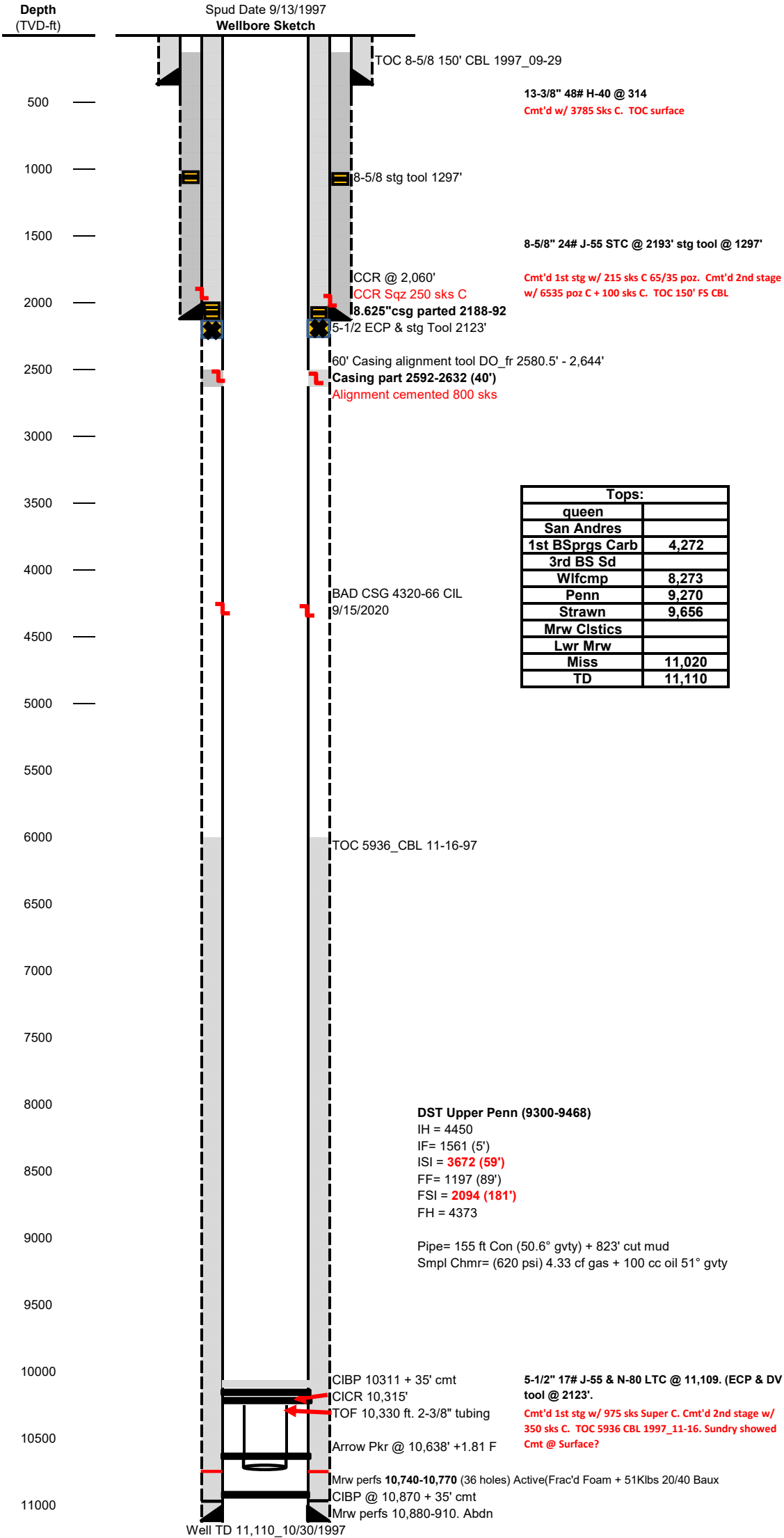
660 FNL & 1650 FWL _N2 320 Proration

API # 30-015-29773

GL 3192, DF 3205, KB 3206 (KB 14')

Spud Date 9/13/1997

Wellbore Sketch



District I
1625 N. French Dr., Hobbs, NM 88240
Phone:(575) 393-6161 Fax:(575) 393-0720
District II
811 S. First St., Artesia, NM 88210
Phone:(575) 748-1283 Fax:(575) 748-9720
District III
1000 Rio Brazos Rd., Aztec, NM 87410
Phone:(505) 334-6178 Fax:(505) 334-6170
District IV
1220 S. St Francis Dr., Santa Fe, NM 87505
Phone:(505) 476-3470 Fax:(505) 476-3462

State of New Mexico
Energy, Minerals and Natural Resources
Oil Conservation Division
1220 S. St Francis Dr.
Santa Fe, NM 87505

CONDITIONS

Action 24097

CONDITIONS OF APPROVAL

Operator:	TASCOSA ENERGY PARTNERS, L.L.C	901 W. Missouri Ave	Midland, TX79701	OGRID:	329748	Action Number:	24097	Action Type:	C-103P
OCD Reviewer	Condition								
abustamante	None								