

Submit 1 Copy To Appropriate District Office
 District I - (575) 393-6161
 1625 N. French Dr., Hobbs, NM 88240
 District II - (575) 748-1283
 811 S. First St., Artesia, NM 88210
 District III - (505) 334-6178
 1000 Rio Brazos Rd., Aztec, NM 87410
 District IV - (505) 476-3460
 1220 S. St. Francis Dr., Santa Fe, NM 87505

State of New Mexico
 Energy, Minerals and Natural Resources

Form C-103
 Revised July 18, 2013

OIL CONSERVATION DIVISION
 1220 South St. Francis Dr.
 Santa Fe, NM 87505

WELL API NO.

30-015-22658

5. Indicate Type of Lease

STATE ☒ FEE ☐

6. State Oil & Gas Lease No.

NM-016788

7. Lease Name or Unit Agreement Name

Empire Abo Unit

8. Well Number #194

9. OGRID Number

873

10. Pool name or Wildcat

Empire: Abo (22040)

SUNDRY NOTICES AND REPORTS ON WELLS
 (DO NOT USE THIS FORM FOR PROPOSALS TO DRILL OR TO DEEPEN OR PLUG BACK TO A DIFFERENT RESERVOIR. USE "APPLICATION FOR PERMIT" (FORM C-101) FOR SUCH PROPOSALS.)

1. Type of Well: Oil Well ☒ Gas Well ☐ Other ☐

2. Name of Operator
 Apache Corporation

3. Address of Operator

303 Veterans Airpark Lane, Ste. 3000, Midland, TX 79705

4. Well Location

Unit Letter J : 1500 feet from the S line and 2310 feet from the E line
 Section 1 Township 18S Range 27E NMPM County Eddy

11. Elevation (Show whether DR, RKB, RT, GR, etc.)
 3618'

12. Check Appropriate Box to Indicate Nature of Notice, Report or Other Data

NOTICE OF INTENTION TO:

PERFORM REMEDIAL WORK ☐ PLUG AND ABANDON ☐
 TEMPORARILY ABANDON ☐ CHANGE PLANS ☐
 PULL OR ALTER CASING ☐ MULTIPLE COMPL ☐
 DOWNHOLE COMMINGLE ☐
 CLOSED-LOOP SYSTEM ☐
 OTHER: ☐

SUBSEQUENT REPORT OF:

REMEDIAL WORK ☐ ALTERING CASING ☐
 COMMENCE DRILLING OPNS ☐ P AND A ☒
 CASING/CEMENT JOB ☐
 OTHER: ☐

13. Describe proposed or completed operations. (Clearly state all pertinent details, and give pertinent dates, including estimated date of starting any proposed work). SEE RULE 19.15.7.14 NMAC. For Multiple Completions: Attach wellbore diagram of proposed completion or recompletion.

- MIRU
- 04/15/21 Tag CIBP at 5770'. Spot 25 sx class C cmt. Tag TOC at 5500' inside 5 1/2 csg. Spot 95 sx class C cmt at 4065'. Tag TOC at 3120' inside 5 1/2 csg.
 - 04/16/21 Spot 25 sx class C cmt at 2100'. Tag TOC at 1755' inside 5 1/2 csg. Spot 35 sx class C cmt at 1250'. Tag TOC at 945' inside 5 1/2 csg.
 - 04/19/21 Perf at 300' tried to break circulation / but instead got inject rate / sqzd 140 sx class C cmt from surface to 300' inside 5 1/2 csg. Cut off wellhead and remove. Install dry hole marker. P&A complete.

Approved for plugging of well bore only. Liability under bond is retained pending receipt of C-103 (Subsequent Report of Well Plugging) which may be found at OCD Web Page under Forms, www.emnrd.state.nm.us

Spud Date:

Rig Release Date:

I hereby certify that the information above is true and complete to the best of my knowledge and belief.

SIGNATURE

TITLE

Agent

DATE

04/21/21

Type or print name

Jimmy Bagley

E-mail address:

sunsetwellservice@yahoo.com

PHONE:

432-561-8600

For State Use Only

APPROVED BY:

TITLE

Staff Manager

DATE

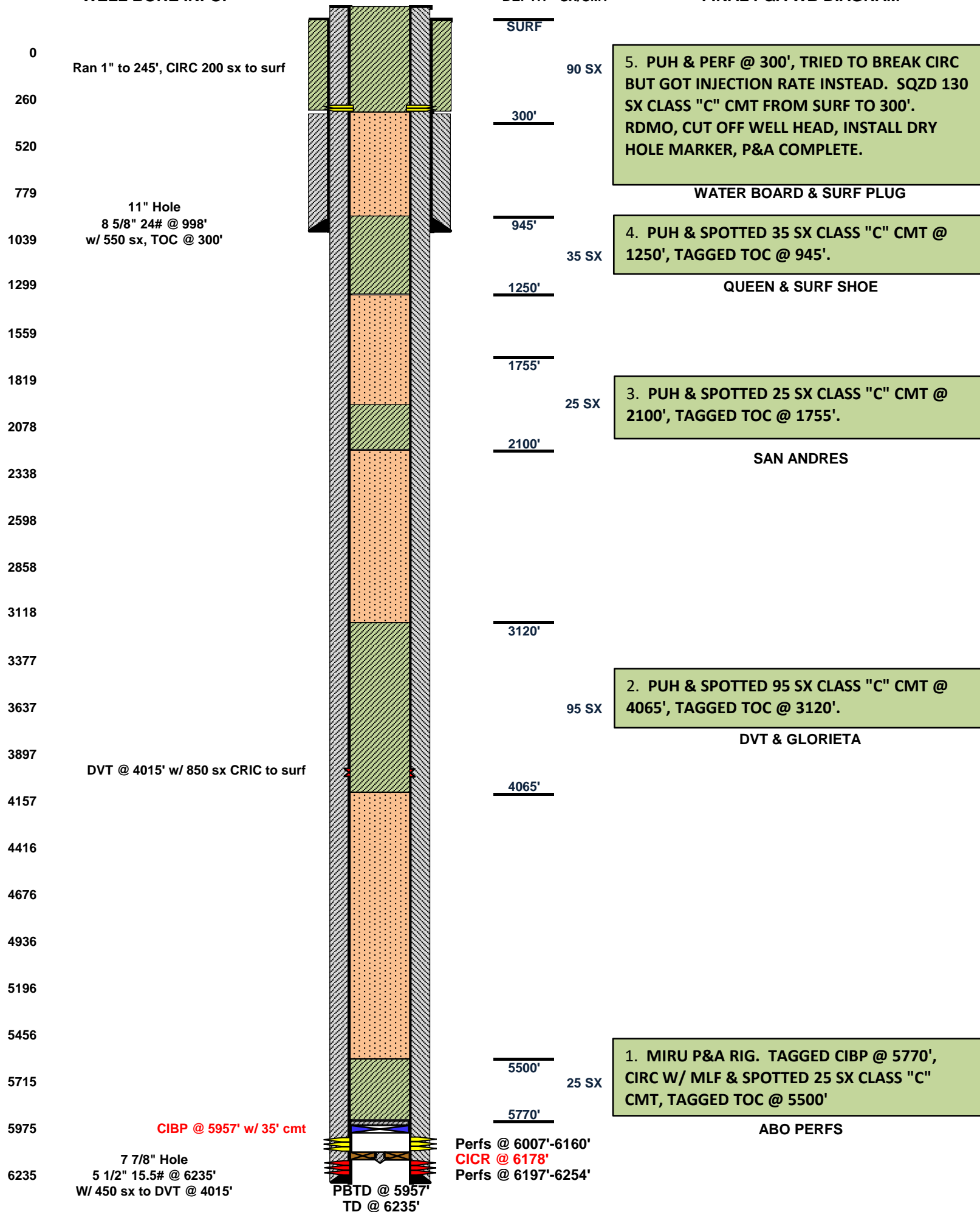
5/3/2021

Conditions of Approval (if any):

Authorized by Neal Peerman P&A cost to Quinn Burke Sr Reclamation Foreman Apache Corp.



LEASE NAME	Empire Abo Unit
WELL #	#194
API #	30.015.22658
COUNTY	EDDY, NM



District I
1625 N. French Dr., Hobbs, NM 88240
Phone:(575) 393-6161 Fax:(575) 393-0720
District II
811 S. First St., Artesia, NM 88210
Phone:(575) 748-1283 Fax:(575) 748-9720
District III
1000 Rio Brazos Rd., Aztec, NM 87410
Phone:(505) 334-6178 Fax:(505) 334-6170
District IV
1220 S. St Francis Dr., Santa Fe, NM 87505
Phone:(505) 476-3470 Fax:(505) 476-3462

State of New Mexico
Energy, Minerals and Natural Resources
Oil Conservation Division
1220 S. St Francis Dr.
Santa Fe, NM 87505

CONDITIONS

Action 25751

CONDITIONS OF APPROVAL

Operator: #1000	APACHE CORPORATION Midland, TX79705	303 Veterans Airpark Ln	OGRID: 873	Action Number: 25751	Action Type: C-103P
OCD Reviewer gcordero	Condition None				