

Form 3160-3
(June 2015)UNITED STATES
DEPARTMENT OF THE INTERIOR
BUREAU OF LAND MANAGEMENT

APPLICATION FOR PERMIT TO DRILL OR REENTER

FORM APPROVED
OMB No. 1004-0137
Expires: January 31, 2018

1a. Type of work: <input checked="" type="checkbox"/> DRILL <input type="checkbox"/> REENTER		5. Lease Serial No. NMNM126493
1b. Type of Well: <input checked="" type="checkbox"/> Oil Well <input type="checkbox"/> Gas Well <input type="checkbox"/> Other		6. If Indian, Allottee or Tribe Name
1c. Type of Completion: <input type="checkbox"/> Hydraulic Fracturing <input checked="" type="checkbox"/> Single Zone <input type="checkbox"/> Multiple Zone		7. If Unit or CA Agreement, Name and No.
2. Name of Operator EOG RESOURCES INCORPORATED [7377]		8. Lease Name and Well No. DRIVER 14 FED COM [315972] 504H
3a. Address 1111 BAGBY SKY LOBBY 2, HOUSTON, TX 77002	3b. Phone No. (include area code) (432) 686-3600	9. API Well No. 30-025-48821
4. Location of Well (Report location clearly and in accordance with any State requirements. *) At surface SESW / 979 FSL / 2479 FWL / LAT 32.3001152 / LONG -103.5436522 At proposed prod. zone NWNE / 100 FNL / 2301 FEL / LAT 32.3261845 / LONG -103.542074		10. Field and Pool, or Exploratory [5150] PERMIAN/BELL LAKE; BONE SPRING, N
14. Distance in miles and direction from nearest town or post office*		11. Sec., T. R. M. or Blk. and Survey or Area SEC 14/T23S/R33E/NMP
15. Distance from proposed* location to nearest property or lease line, ft. (Also to nearest drig. unit line, if any) 979 feet		12. County or Parish LEA
16. No of acres in lease		13. State NM
17. Spacing Unit dedicated to this well 640.0		
18. Distance from proposed location* to nearest well, drilling, completed, applied for, on this lease, ft. 33 feet		20. BLM/BIA Bond No. in file FED: 2308
21. Elevations (Show whether DF, KDB, RT, GL, etc.) 3669 feet		22. Approximate date work will start* 11/01/2020
23. Estimated duration 25 days		
24. Attachments		

The following, completed in accordance with the requirements of Onshore Oil and Gas Order No. 1, and the Hydraulic Fracturing rule per 43 CFR 3162.3-3 (as applicable)

- | | |
|--|---|
| 1. Well plat certified by a registered surveyor. | 4. Bond to cover the operations unless covered by an existing bond on file (see Item 20 above). |
| 2. A Drilling Plan. | 5. Operator certification. |
| 3. A Surface Use Plan (if the location is on National Forest System Lands, the SUPO must be filed with the appropriate Forest Service Office). | 6. Such other site specific information and/or plans as may be requested by the BLM. |

25. Signature (Electronic Submission)	Name (Printed/Typed) LISA TRASCHER / Ph: (713) 651-7000	Date 04/30/2020
Title Regulatory Specialist		
Approved by (Signature) (Electronic Submission)	Name (Printed/Typed) Cody Layton / Ph: (575) 234-5959	Date 04/23/2021
Title Assistant Field Manager Lands & Minerals		
Office Carlsbad Field Office		

Application approval does not warrant or certify that the applicant holds legal or equitable title to those rights in the subject lease which would entitle the applicant to conduct operations thereon.

Conditions of approval, if any, are attached.

Title 18 U.S.C. Section 1001 and Title 43 U.S.C. Section 1212, make it a crime for any person knowingly and willfully to make to any department or agency of the United States any false, fictitious or fraudulent statements or representations as to any matter within its jurisdiction.

GCP Rec 05/05/2021

SL

(Continued on page 2)



Approval Date: 04/23/2021

KZ
05/10/2021

*(Instructions on page 2)

District I
1625 N. French Dr., Hobbs, NM 88240
Phone: (575) 393-6161 Fax: (575) 393-0720
District II
811 S. First St., Artesia, NM 88210
Phone: (575) 748-1283 Fax: (575) 748-9720
District III
1000 Rio Brazos Road, Aztec, NM 87410
Phone: (505) 334-6178 Fax: (505) 334-6170
District IV
1220 S. St. Francis Dr., Santa Fe, NM 87505
Phone: (505) 476-3460 Fax: (505) 476-3462

State of New Mexico
Energy, Minerals & Natural Resources
Department
OIL CONSERVATION DIVISION
1220 South St. Francis Dr.
Santa Fe, NM 87505

FORM C-102

Revised August 1, 2011

Submit one copy to appropriate

District Office

☐ AMENDED REPORT

WELL LOCATION AND ACREAGE DEDICATION PLAT

¹ API Number 30-025-48821		² Pool Code 5150		³ Pool Name Bell Lake; Bone Spring, North	
⁴ Property Code 315972		⁵ Property Name DRIVER 14 FED COM			⁶ Well Number 504H
⁷ OGRID No. 7377		⁸ Operator Name EOG RESOURCES, INC.			⁹ Elevation 3669'

¹⁰Surface Location

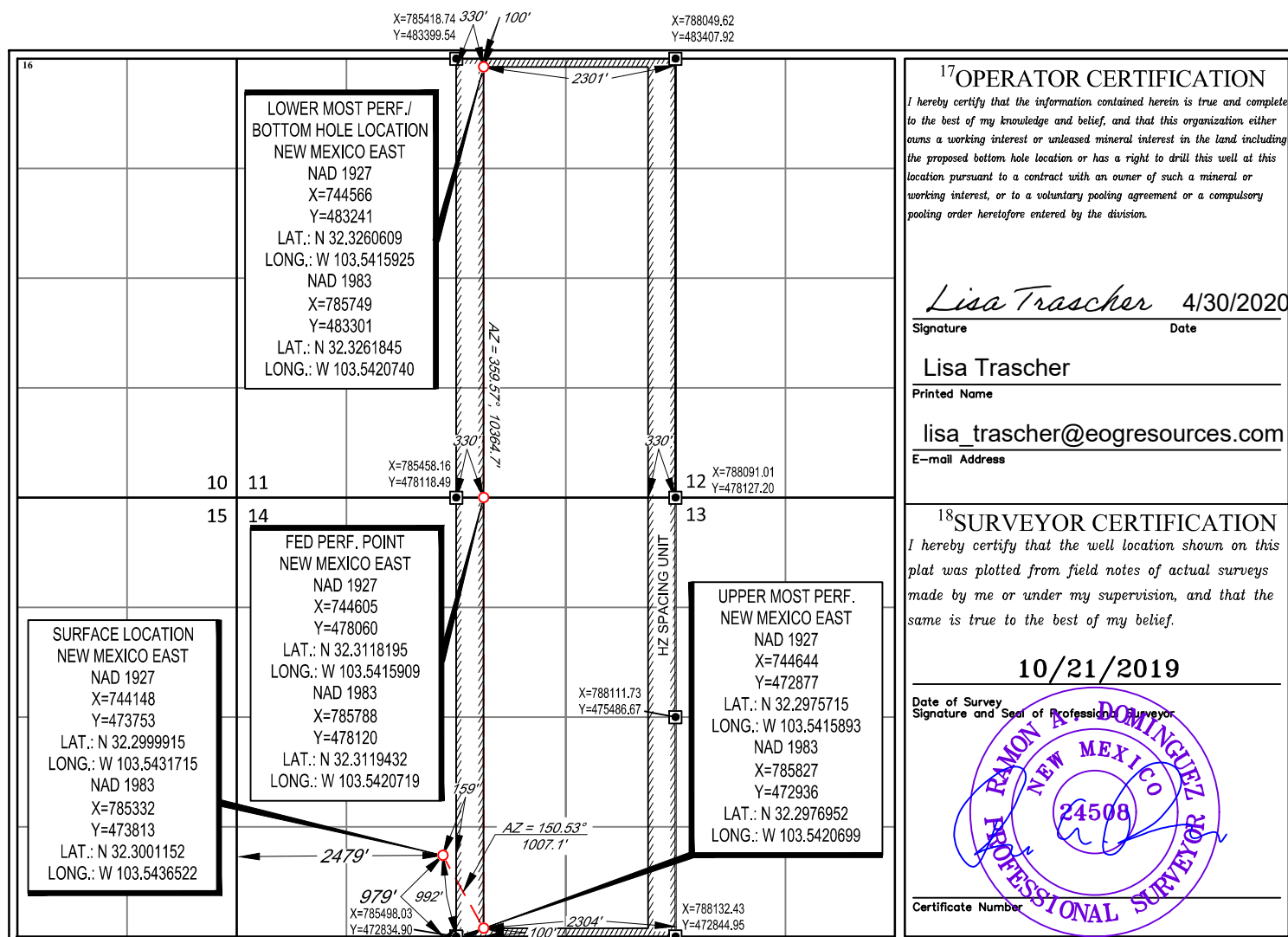
UL or lot no.	Section	Township	Range	Lot Idn	Feet from the	North/South line	Feet from the	East/West line	County
N	14	23-S	33-E	-	979'	SOUTH	2479'	WEST	LEA

¹¹Bottom Hole Location If Different From Surface

UL or lot no.	Section	Township	Range	Lot Idn	Feet from the	North/South line	Feet from the	East/West line	County
B	11	23-S	33-E	-	100'	NORTH	2301'	EAST	LEA

¹² Dedicated Acres 640.00	¹³ Joint or Infill	¹⁴ Consolidation Code	¹⁵ Order No.
--	-------------------------------	----------------------------------	-------------------------

No allowable will be assigned to this completion until all interests have been consolidated or a non-standard unit has been approved by the division.



District I
1625 N. French Dr., Hobbs, NM 88240
District II
811 S. First St., Artesia, NM 88210
District III
1000 Rio Brazos Road, Aztec, NM 87410
District IV
1220 S. St. Francis Dr., Santa Fe, NM 87505

State of New Mexico
Energy, Minerals and Natural Resources Department
Oil Conservation Division
1220 South St. Francis Dr.
Santa Fe, NM 87505

Submit Original
to Appropriate
District Office

GAS CAPTURE PLAN

Date: 4/30/2020

☒ Original Operator & OGRID No.: EOG Resources, Inc. 7377
☐ Amended - Reason for Amendment: _____

This Gas Capture Plan outlines actions to be taken by the Operator to reduce well/production facility flaring/venting for new completion (new drill, recomple to new zone, re-frac) activity.

Note: Form C-129 must be submitted and approved prior to exceeding 60 days allowed by Rule (Subsection A of 19.15.18.12 NMAC).

Well(s)/Production Facility – Name of facility

The well(s) that will be located at the production facility are shown in the table below.

Well Name	API	Well Location (ULSTR)	Footages	Expected MCF/D	Flared or Vented	Comments
Driver 14 Fed Com 503H	30-025-*****	N-14-23S-33E	978' FSL & 2446' FWL	±3500	None Planned	APD Submission
Driver 14 Fed Com 504H	30-025-***** 30-025-48821	N-14-23S-33E	979' FSL & 2479' FWL	±3500	None Planned	APD Submission
Driver 14 Fed Com 505H	30-025-*****	P-14-23S-33E	982' FSL & 1176' FEL	±3500	None Planned	APD Submission
Driver 14 Fed Com 506H	30-025-*****	P-14-23S-33E	1015' FSL & 1176' FEL	±3500	None Planned	APD Submission

Gathering System and Pipeline Notification

Well(s) will be connected to a production facility after flowback operations are complete, if gas transporter system is in place. The gas produced from production facility is dedicated to **Lucid Energy, Enterprise & Regency Field Services** and will be connected to **EOG Resources** low/high pressure gathering system located in Lea County, New Mexico. **EOG Resources** provides (periodically) to **Lucid Energy, Enterprise & Regency Field Services** a drilling, completion and estimated first production date for wells that are scheduled to be drilled in the foreseeable future. In addition, **EOG Resources** and **Lucid Energy, Enterprise & Regency Field Services** have periodic conference calls to discuss changes to drilling and completion schedules. Gas from these wells will be processed at **Lucid Energy, Enterprise & Regency Field Services** Processing Plant located in Lea County, New Mexico. The actual flow of the gas will be based on compression operating parameters and gathering system pressures.

Flowback Strategy

After the fracture treatment/completion operations, well(s) will be produced to temporary production tanks and gas will be flared or vented. During flowback, the fluids and sand content will be monitored. When the produced fluids contain minimal sand, the wells will be turned to production facilities. Gas sales should start as soon as the wells start flowing through the production facilities, unless there are operational issues on **Lucid Energy, Enterprise & Regency Field Services** system at that time. Based on current information, it is **EOG Resources'** belief the system can take this gas upon completion of the well(s).

Safety requirements during cleanout operations from the use of underbalanced air cleanout systems may necessitate that sand and non-pipeline quality gas be vented and/or flared rather than sold on a temporary basis.

Alternatives to Reduce Flaring

Below are alternatives considered from a conceptual standpoint to reduce the amount of gas flared.

- Power Generation – On lease
 - Only a portion of gas is consumed operating the generator, remainder of gas will be flared
- Compressed Natural Gas – On lease
 - Gas flared would be minimal, but might be uneconomical to operate when gas volume declines
- NGL Removal – On lease
 - Plants are expensive, residue gas is still flared, and uneconomical to operate when gas volume declines

**EOG RESOURCES, INC.
DRIVER 14 FED COM #504H**

1. GEOLOGIC NAME OF SURFACE FORMATION:

Permian

2. ESTIMATED TOPS OF IMPORTANT GEOLOGICAL MARKERS:

Rustler	1,222'
Tamarisk Anhydrite	1,355'
Top of Salt	1,741'
Base of Salt	4,895'
Lamar	5,159'
Bell Canyon	5,187'
Cherry Canyon	6,010'
Brushy Canyon	6,928'
Bone Spring Lime	9,035'
Leonard	9,211'
1 st Bone Spring Sand	10,147'
2 nd Bone Spring Shale	10,386'
2 nd Bone Spring Sand	10,979'
TD	11,069'

3. ESTIMATED DEPTHS OF ANTICIPATED FRESH WATER, OIL OR GAS:

Upper Permian Sands	0- 400'	Fresh Water
Cherry Canyon	6,010'	Oil
Brushy Canyon	6,928'	Oil
1 st Bone Spring Sand	10,147'	Oil
2 nd Bone Spring Shale	10,386'	Oil
2 nd Bone Spring Sand	10,979'	Oil

No other Formations are expected to give up oil, gas or fresh water in measurable quantities. Surface fresh water sands will be protected by setting 13.375" casing at 1,470' and circulating cement back to surface.

**EOG RESOURCES, INC.
DRIVER 14 FED COM #504H**

4. CASING PROGRAM - NEW

Hole Size	Interval	Csg OD	Weight	Grade	Conn	DF _{min} Collapse	DF _{min} Burst	DF _{min} Tension
17.5"	0' – 1,470'	13.375"	54.5#	J-55	STC	1.125	1.25	1.60
12.25"	0' – 4,000'	9.625"	40#	J-55	LTC	1.125	1.25	1.60
12.25"	4,000' – 5,090'	9.625"	40#	HCK-55	LTC	1.125	1.25	1.60
8.75"	0' – 11,402'	5.5"	17#	HCP-110	LTC	1.125	1.25	1.60
8.5"	11,402' – 21,340'	5.5"	17#	HCP-110	LTC	1.125	1.25	1.60

Variance is requested to waive the centralizer requirements for the 9-5/8" FJ casing in the 12-1/4" hole size. An expansion additive will be utilized, in the cement slurry, for the entire length of the 12-1/4" hole interval to maximize cement bond and zonal isolation.

Variance is also requested to waive any centralizer requirements for the 5-1/2" FJ casing in the 8-3/4" hole size. An expansion additive will be utilized, in the cement slurry, for the entire length of the 8-3/4" hole interval to maximize cement bond and zonal isolation.

Cementing Program:

Depth	No. Sacks	Wt. ppg	Yld Ft ³ /sk	Slurry Description
1,470'	930	13.5	1.73	Lead: Class C + 4.0% Bentonite + 0.5% CaCl ₂ + 0.25 lb/sk Cello-Flake (TOC @ Surface)
	190	14.8	1.34	Tail: Class C + 0.6% FL-62 + 0.25 lb/sk Cello-Flake + 0.2% Sodium Metasilicate (TOC @ 1,270')
5,090'	580	9.0	3.5	Lead: Class C + 10% NaCl + 6% Bentonite Gel + 3% MagOx (TOC @ Surface)
	370	14.4	1.20	Tail: Class C + 10% NaCl + 3% MagOx (TOC @ 4,072')
21,340'	530	11.0	3.21	Lead: Class C + 3% CaCl ₂ + 3% Microbond (TOC @ 4,590')
	2,870	14.4	1.2	Tail: Class H + 0.4% Halad-344 + 0.35% HR-601 + 3% Microbond (TOC @ 9,427')

**EOG RESOURCES, INC.
DRIVER 14 FED COM #504H**

Additive	Purpose
Bentonite Gel	Lightweight/Lost circulation prevention
Calcium Chloride	Accelerator
Cello-flake	Lost circulation prevention
Sodium Metasilicate	Accelerator
MagOx	Expansive agent
Sodium Chloride	Accelerator
FL-62	Fluid loss control
Halad-344	Fluid loss control
Halad-9	Fluid loss control
HR-601	Retarder
Microbond	Expansive Agent

Note: Cement volumes based on bit size plus at least 25% excess in the open hole plus 10% excess in the cased-hole overlap section.

5. MINIMUM SPECIFICATIONS FOR PRESSURE CONTROL:

Variance is requested to use a co-flex line between the BOP and choke manifold (instead of using a 4" OD steel line).

The minimum blowout preventer equipment (BOPE) shown in Exhibit #1 will consist of a single ram, mud cross and double ram-type (10,000 psi WP) preventer and an annular preventer (5,000-psi WP). Both units will be hydraulically operated and the ram-type will be equipped with blind rams on bottom and drill pipe rams on top. All BOPE will be tested in accordance with Onshore Oil & Gas order No. 2.

Variance is requested to use a 5,000 psi annular BOP with the 10,000 psi BOP stack.

Before drilling out of the surface casing, the ram-type BOP and accessory equipment will be tested to 10,000/ 250 psig and the annular preventer to 5,000/ 250 psig.

Pipe rams and blind rams will be operationally checked on each trip out of the hole. These checks will be noted on the daily tour sheets.

A hydraulically operated choke will be installed prior to drilling out of the intermediate casing shoe.

6. TYPES AND CHARACTERISTICS OF THE PROPOSED MUD SYSTEM:

During this procedure we plan to use a Closed-Loop System and haul contents to the required disposal.

The applicable depths and properties of the drilling fluid systems are as follows.

3.

**EOG RESOURCES, INC.
DRIVER 14 FED COM #504H**

Depth	Type	Weight (ppg)	Viscosity	Water Loss
0 – 1,470'	Fresh - Gel	8.6-8.8	28-34	N/c
1,470' – 5,090'	Brine	8.6-8.8	28-34	N/c
5,090' – 21,340'	Oil Base	8.8-9.5	58-68	N/c - 6

An electronic pit volume totalizer (PVT) will be utilized on the circulating system, to monitor pit volume, flow rate, pump pressure and stroke rate.

Sufficient mud materials to maintain mud properties and meet minimum lost circulation and weight increase requirements will be kept at the wellsite at all times.

7. AUXILIARY WELL CONTROL AND MONITORING EQUIPMENT:

- (A) A kelly cock will be kept in the drill string at all times.
- (B) A full opening drill pipe-stabbing valve (inside BOP) with proper drill pipe connections will be on the rig floor at all times.
- (C) H₂S monitoring and detection equipment will be utilized from surface casing point to TD.

8. LOGGING, TESTING AND CORING PROGRAM:

Open-hole logs are not planned for this well.

GR–CCL Will be run in cased hole during completions phase of operations.

9. ABNORMAL CONDITIONS, PRESSURES, TEMPERATURES AND POTENTIAL HAZARDS:

The estimated bottom-hole temperature (BHT) at TD is 181 degrees F with an estimated maximum bottom-hole pressure (BHP) at TD of 5,468 psig and a maximum anticipated surface pressure of 3,033 psig (based on 9.5 ppg MW). No hydrogen sulfide or other hazardous gases or fluids have been encountered, reported or are known to exist at this depth in this area. Severe loss circulation is expected from 6,928' to Intermediate casing point.

**EOG RESOURCES, INC.
DRIVER 14 FED COM #504H**

10. ANTICIPATED STARTING DATE AND DURATION OF OPERATIONS:

The drilling operation should be finished in approximately one month. If the well is productive, an additional 60-90 days will be required for completion and testing before a decision is made to install permanent facilities.

(A) EOG Resources requests the option to contract a Surface Rig to drill, set surface casing, and cement on the subject well. After WOC 8 hours or 500 psi compressive strength (whichever is greater), the Surface Rig will move off so the wellhead can be installed. A welder will cut the casing to the proper height and weld on the wellhead (both "A" and "B" sections). The weld will be tested to 1000 psi. All valves will be closed and a wellhead cap will be installed (diagram attached). If the timing between rigs is such that EOG Resources would not be able to preset the surface, the Primary Rig will MIRU and drill the well in its entirety per the APD.

11. WELLHEAD:

A multi-bowl wellhead system will be utilized.

After running the 13-3/8" surface casing, a 13-3/8" BOP/BOPE system with a minimum working pressure of 10,000 psi will be installed on the wellhead system and will be pressure tested to 250 psi low followed by a 10,000 psi pressure test. This pressure test will be repeated at least every 30 days, as per Onshore Order No. 2

The minimum working pressure of the BOP and related BOPE required for drilling below the surface casing shoe shall be 10,000 psi.

The multi-bowl wellhead will be installed by vendor's representative(s). A copy of the installation instructions for the Cameron Multi-Bowl WH system has been sent to the NM BLM office in Carlsbad, NM.

The wellhead will be installed by a third party welder while being monitored by WH vendor's representative.

All BOP equipment will be tested utilizing a conventional test plug. Not a cup or J-packer type.

A solid steel body pack-off will be utilized after running and cementing the intermediate casing. After installation the pack-off and lower flange will be pressure tested to 5000 psi.

Casing strings will be tested as per Onshore Order No. 2 to at least 0.22 psi/ft or 1500 psi, whichever is greater.

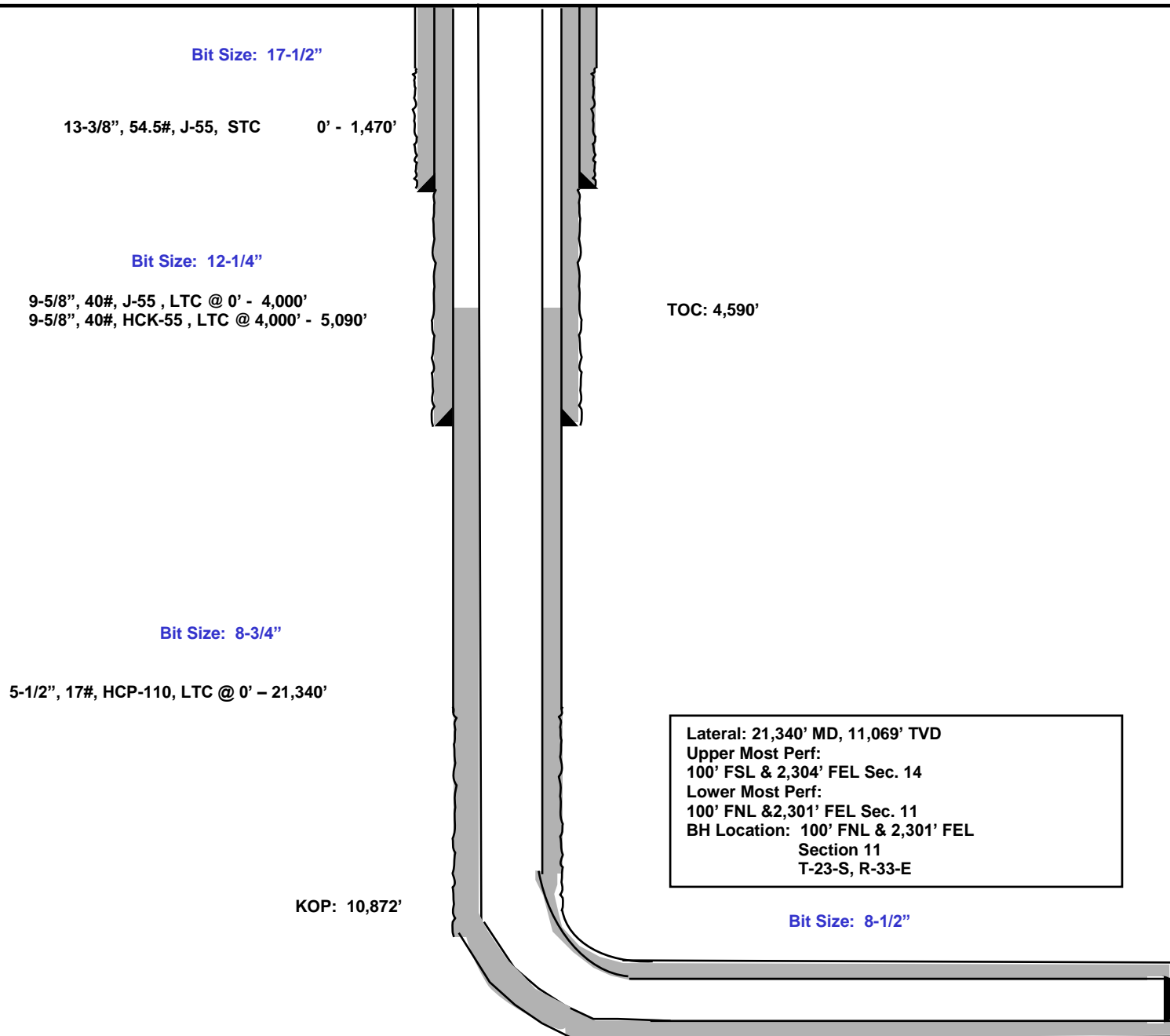
EOG RESOURCES, INC.
DRIVER 14 FED COM #504H

979' FSL
2,479' FWL
Section 14
T-23-S, R-33-E

Proposed Wellbore

KB: 3,694'
GL: 3,669'

API: 30-025-*****





EOG Resources - Midland

Lea County, NM (NAD 83 NME)

Driver 14 Fed Com

#504H

OH

Plan: Plan #0.2

Standard Planning Report

23 April, 2020

EOG Resources

Planning Report



Database:	EDM	Local Co-ordinate Reference:	Well #504H
Company:	EOG Resources - Midland	TVD Reference:	KB = 25' @ 3694.0usft
Project:	Lea County, NM (NAD 83 NME)	MD Reference:	KB = 25' @ 3694.0usft
Site:	Driver 14 Fed Com	North Reference:	Grid
Well:	#504H	Survey Calculation Method:	Minimum Curvature
Wellbore:	OH		
Design:	Plan #0.2		

Project	Lea County, NM (NAD 83 NME)		
Map System:	US State Plane 1983	System Datum:	Mean Sea Level
Geo Datum:	North American Datum 1983		
Map Zone:	New Mexico Eastern Zone		

Site	Driver 14 Fed Com				
Site Position:		Northing:	477,409.00 usft	Latitude:	32.3100238°N
From:	Map	Easting:	784,122.00 usft	Longitude:	103.5474822°W
Position Uncertainty:	0.0 usft	Slot Radius:	13-3/16 "	Grid Convergence:	0.42 °

Well	#504H					
Well Position	+N/-S	-3,596.0 usft	Northing:	473,813.00 usft	Latitude:	32.3001153°N
	+E/-W	1,210.0 usft	Easting:	785,332.00 usft	Longitude:	103.5436517°W
Position Uncertainty		0.0 usft	Wellhead Elevation:		Ground Level:	3,669.0 usft

Wellbore	OH				
Magnetics	Model Name	Sample Date	Declination (°)	Dip Angle (°)	Field Strength (nT)
	IGRF2015	9/25/2019	6.70	60.11	47,750.34417461

Design	Plan #0.2			
Audit Notes:				
Version:	Phase:	PLAN	Tie On Depth:	0.0
Vertical Section:	Depth From (TVD) (usft)	+N/-S (usft)	+E/-W (usft)	Direction (°)
	0.0	0.0	0.0	2.52

Plan Survey Tool Program	Date	4/23/2020		
Depth From (usft)	Depth To (usft)	Survey (Wellbore)	Tool Name	Remarks
1	0.0	21,339.5 Plan #0.2 (OH)	MWD	
			OWSG MWD - Standard	

EOG Resources

Planning Report



Database:	EDM	Local Co-ordinate Reference:	Well #504H
Company:	EOG Resources - Midland	TVD Reference:	KB = 25' @ 3694.0usft
Project:	Lea County, NM (NAD 83 NME)	MD Reference:	KB = 25' @ 3694.0usft
Site:	Driver 14 Fed Com	North Reference:	Grid
Well:	#504H	Survey Calculation Method:	Minimum Curvature
Wellbore:	OH		
Design:	Plan #0.2		

Plan Sections										
Measured Depth (usft)	Inclination (°)	Azimuth (°)	Vertical Depth (usft)	+N/-S (usft)	+E/-W (usft)	Dogleg Rate (°/100usft)	Build Rate (°/100usft)	Turn Rate (°/100usft)	TFO (°)	Target
0.0	0.00	0.00	0.0	0.0	0.0	0.00	0.00	0.00	0.00	
1,200.0	0.00	0.00	1,200.0	0.0	0.0	0.00	0.00	0.00	0.00	
1,530.8	6.62	151.90	1,530.1	-16.8	9.0	2.00	2.00	0.00	151.90	
10,320.7	6.62	151.90	10,261.4	-910.2	486.0	0.00	0.00	0.00	0.00	
10,651.5	0.00	0.00	10,591.5	-927.0	495.0	2.00	-2.00	0.00	180.00	KOP(Driver 14 Fed C
10,872.1	26.45	0.00	10,804.3	-877.0	495.0	11.99	11.99	0.00	0.00	FTP(Driver 14 Fed Cc
11,401.7	90.00	359.56	11,069.1	-449.5	492.7	12.00	12.00	-0.08	-0.49	
16,158.3	90.00	359.56	11,069.0	4,307.0	456.0	0.00	0.00	0.00	0.00	Fed Perf(Driver 14 Fe
16,158.9	90.00	359.57	11,069.0	4,307.6	456.0	2.00	-0.29	1.98	98.45	
21,339.5	90.00	359.57	11,069.0	9,488.0	417.0	0.00	0.00	0.00	0.00	PBHL(Driver 14 Fed C



EOG Resources

Planning Report

Database:	EDM	Local Co-ordinate Reference:	Well #504H
Company:	EOG Resources - Midland	TVD Reference:	KB = 25' @ 3694.0usft
Project:	Lea County, NM (NAD 83 NME)	MD Reference:	KB = 25' @ 3694.0usft
Site:	Driver 14 Fed Com	North Reference:	Grid
Well:	#504H	Survey Calculation Method:	Minimum Curvature
Wellbore:	OH		
Design:	Plan #0.2		

Planned Survey									
Measured Depth (usft)	Inclination (°)	Azimuth (°)	Vertical Depth (usft)	+N/-S (usft)	+E/-W (usft)	Vertical Section (usft)	Dogleg Rate (°/100usft)	Build Rate (°/100usft)	Turn Rate (°/100usft)
0.0	0.00	0.00	0.0	0.0	0.0	0.0	0.00	0.00	0.00
100.0	0.00	0.00	100.0	0.0	0.0	0.0	0.00	0.00	0.00
200.0	0.00	0.00	200.0	0.0	0.0	0.0	0.00	0.00	0.00
300.0	0.00	0.00	300.0	0.0	0.0	0.0	0.00	0.00	0.00
400.0	0.00	0.00	400.0	0.0	0.0	0.0	0.00	0.00	0.00
500.0	0.00	0.00	500.0	0.0	0.0	0.0	0.00	0.00	0.00
600.0	0.00	0.00	600.0	0.0	0.0	0.0	0.00	0.00	0.00
700.0	0.00	0.00	700.0	0.0	0.0	0.0	0.00	0.00	0.00
800.0	0.00	0.00	800.0	0.0	0.0	0.0	0.00	0.00	0.00
900.0	0.00	0.00	900.0	0.0	0.0	0.0	0.00	0.00	0.00
1,000.0	0.00	0.00	1,000.0	0.0	0.0	0.0	0.00	0.00	0.00
1,100.0	0.00	0.00	1,100.0	0.0	0.0	0.0	0.00	0.00	0.00
1,200.0	0.00	0.00	1,200.0	0.0	0.0	0.0	0.00	0.00	0.00
1,300.0	2.00	151.90	1,300.0	-1.5	0.8	-1.5	2.00	2.00	0.00
1,400.0	4.00	151.90	1,399.8	-6.2	3.3	-6.0	2.00	2.00	0.00
1,500.0	6.00	151.90	1,499.5	-13.8	7.4	-13.5	2.00	2.00	0.00
1,530.8	6.62	151.90	1,530.1	-16.8	9.0	-16.4	2.00	2.00	0.00
1,600.0	6.62	151.90	1,598.8	-23.9	12.7	-23.3	0.00	0.00	0.00
1,700.0	6.62	151.90	1,698.1	-34.0	18.2	-33.2	0.00	0.00	0.00
1,800.0	6.62	151.90	1,797.5	-44.2	23.6	-43.1	0.00	0.00	0.00
1,900.0	6.62	151.90	1,896.8	-54.4	29.0	-53.0	0.00	0.00	0.00
2,000.0	6.62	151.90	1,996.1	-64.5	34.4	-62.9	0.00	0.00	0.00
2,100.0	6.62	151.90	2,095.5	-74.7	39.9	-72.9	0.00	0.00	0.00
2,200.0	6.62	151.90	2,194.8	-84.8	45.3	-82.8	0.00	0.00	0.00
2,300.0	6.62	151.90	2,294.1	-95.0	50.7	-92.7	0.00	0.00	0.00
2,400.0	6.62	151.90	2,393.5	-105.2	56.2	-102.6	0.00	0.00	0.00
2,500.0	6.62	151.90	2,492.8	-115.3	61.6	-112.5	0.00	0.00	0.00
2,600.0	6.62	151.90	2,592.1	-125.5	67.0	-122.4	0.00	0.00	0.00
2,700.0	6.62	151.90	2,691.5	-135.7	72.4	-132.3	0.00	0.00	0.00
2,800.0	6.62	151.90	2,790.8	-145.8	77.9	-142.3	0.00	0.00	0.00
2,900.0	6.62	151.90	2,890.1	-156.0	83.3	-152.2	0.00	0.00	0.00
3,000.0	6.62	151.90	2,989.5	-166.1	88.7	-162.1	0.00	0.00	0.00
3,100.0	6.62	151.90	3,088.8	-176.3	94.1	-172.0	0.00	0.00	0.00
3,200.0	6.62	151.90	3,188.1	-186.5	99.6	-181.9	0.00	0.00	0.00
3,300.0	6.62	151.90	3,287.5	-196.6	105.0	-191.8	0.00	0.00	0.00
3,400.0	6.62	151.90	3,386.8	-206.8	110.4	-201.8	0.00	0.00	0.00
3,500.0	6.62	151.90	3,486.2	-217.0	115.9	-211.7	0.00	0.00	0.00
3,600.0	6.62	151.90	3,585.5	-227.1	121.3	-221.6	0.00	0.00	0.00
3,700.0	6.62	151.90	3,684.8	-237.3	126.7	-231.5	0.00	0.00	0.00
3,800.0	6.62	151.90	3,784.2	-247.5	132.1	-241.4	0.00	0.00	0.00
3,900.0	6.62	151.90	3,883.5	-257.6	137.6	-251.3	0.00	0.00	0.00
4,000.0	6.62	151.90	3,982.8	-267.8	143.0	-261.2	0.00	0.00	0.00
4,100.0	6.62	151.90	4,082.2	-277.9	148.4	-271.2	0.00	0.00	0.00
4,200.0	6.62	151.90	4,181.5	-288.1	153.8	-281.1	0.00	0.00	0.00
4,300.0	6.62	151.90	4,280.8	-298.3	159.3	-291.0	0.00	0.00	0.00
4,400.0	6.62	151.90	4,380.2	-308.4	164.7	-300.9	0.00	0.00	0.00
4,500.0	6.62	151.90	4,479.5	-318.6	170.1	-310.8	0.00	0.00	0.00
4,600.0	6.62	151.90	4,578.8	-328.8	175.6	-320.7	0.00	0.00	0.00
4,700.0	6.62	151.90	4,678.2	-338.9	181.0	-330.7	0.00	0.00	0.00
4,800.0	6.62	151.90	4,777.5	-349.1	186.4	-340.6	0.00	0.00	0.00
4,900.0	6.62	151.90	4,876.8	-359.2	191.8	-350.5	0.00	0.00	0.00
5,000.0	6.62	151.90	4,976.2	-369.4	197.3	-360.4	0.00	0.00	0.00
5,100.0	6.62	151.90	5,075.5	-379.6	202.7	-370.3	0.00	0.00	0.00
5,200.0	6.62	151.90	5,174.8	-389.7	208.1	-380.2	0.00	0.00	0.00

EOG Resources

Planning Report



Database:	EDM	Local Co-ordinate Reference:	Well #504H
Company:	EOG Resources - Midland	TVD Reference:	KB = 25' @ 3694.0usft
Project:	Lea County, NM (NAD 83 NME)	MD Reference:	KB = 25' @ 3694.0usft
Site:	Driver 14 Fed Com	North Reference:	Grid
Well:	#504H	Survey Calculation Method:	Minimum Curvature
Wellbore:	OH		
Design:	Plan #0.2		

Planned Survey									
Measured Depth (usft)	Inclination (°)	Azimuth (°)	Vertical Depth (usft)	+N/-S (usft)	+E/-W (usft)	Vertical Section (usft)	Dogleg Rate (°/100usft)	Build Rate (°/100usft)	Turn Rate (°/100usft)
5,300.0	6.62	151.90	5,274.2	-399.9	213.5	-390.1	0.00	0.00	0.00
5,400.0	6.62	151.90	5,373.5	-410.1	219.0	-400.1	0.00	0.00	0.00
5,500.0	6.62	151.90	5,472.8	-420.2	224.4	-410.0	0.00	0.00	0.00
5,600.0	6.62	151.90	5,572.2	-430.4	229.8	-419.9	0.00	0.00	0.00
5,700.0	6.62	151.90	5,671.5	-440.6	235.2	-429.8	0.00	0.00	0.00
5,800.0	6.62	151.90	5,770.8	-450.7	240.7	-439.7	0.00	0.00	0.00
5,900.0	6.62	151.90	5,870.2	-460.9	246.1	-449.6	0.00	0.00	0.00
6,000.0	6.62	151.90	5,969.5	-471.0	251.5	-459.5	0.00	0.00	0.00
6,100.0	6.62	151.90	6,068.8	-481.2	257.0	-469.5	0.00	0.00	0.00
6,200.0	6.62	151.90	6,168.2	-491.4	262.4	-479.4	0.00	0.00	0.00
6,300.0	6.62	151.90	6,267.5	-501.5	267.8	-489.3	0.00	0.00	0.00
6,400.0	6.62	151.90	6,366.8	-511.7	273.2	-499.2	0.00	0.00	0.00
6,500.0	6.62	151.90	6,466.2	-521.9	278.7	-509.1	0.00	0.00	0.00
6,600.0	6.62	151.90	6,565.5	-532.0	284.1	-519.0	0.00	0.00	0.00
6,700.0	6.62	151.90	6,664.8	-542.2	289.5	-529.0	0.00	0.00	0.00
6,800.0	6.62	151.90	6,764.2	-552.4	294.9	-538.9	0.00	0.00	0.00
6,900.0	6.62	151.90	6,863.5	-562.5	300.4	-548.8	0.00	0.00	0.00
7,000.0	6.62	151.90	6,962.8	-572.7	305.8	-558.7	0.00	0.00	0.00
7,100.0	6.62	151.90	7,062.2	-582.8	311.2	-568.6	0.00	0.00	0.00
7,200.0	6.62	151.90	7,161.5	-593.0	316.7	-578.5	0.00	0.00	0.00
7,300.0	6.62	151.90	7,260.8	-603.2	322.1	-588.4	0.00	0.00	0.00
7,400.0	6.62	151.90	7,360.2	-613.3	327.5	-598.4	0.00	0.00	0.00
7,500.0	6.62	151.90	7,459.5	-623.5	332.9	-608.3	0.00	0.00	0.00
7,600.0	6.62	151.90	7,558.8	-633.7	338.4	-618.2	0.00	0.00	0.00
7,700.0	6.62	151.90	7,658.2	-643.8	343.8	-628.1	0.00	0.00	0.00
7,800.0	6.62	151.90	7,757.5	-654.0	349.2	-638.0	0.00	0.00	0.00
7,900.0	6.62	151.90	7,856.9	-664.1	354.6	-647.9	0.00	0.00	0.00
8,000.0	6.62	151.90	7,956.2	-674.3	360.1	-657.9	0.00	0.00	0.00
8,100.0	6.62	151.90	8,055.5	-684.5	365.5	-667.8	0.00	0.00	0.00
8,200.0	6.62	151.90	8,154.9	-694.6	370.9	-677.7	0.00	0.00	0.00
8,300.0	6.62	151.90	8,254.2	-704.8	376.4	-687.6	0.00	0.00	0.00
8,400.0	6.62	151.90	8,353.5	-715.0	381.8	-697.5	0.00	0.00	0.00
8,500.0	6.62	151.90	8,452.9	-725.1	387.2	-707.4	0.00	0.00	0.00
8,600.0	6.62	151.90	8,552.2	-735.3	392.6	-717.3	0.00	0.00	0.00
8,700.0	6.62	151.90	8,651.5	-745.5	398.1	-727.3	0.00	0.00	0.00
8,800.0	6.62	151.90	8,750.9	-755.6	403.5	-737.2	0.00	0.00	0.00
8,900.0	6.62	151.90	8,850.2	-765.8	408.9	-747.1	0.00	0.00	0.00
9,000.0	6.62	151.90	8,949.5	-775.9	414.3	-757.0	0.00	0.00	0.00
9,100.0	6.62	151.90	9,048.9	-786.1	419.8	-766.9	0.00	0.00	0.00
9,200.0	6.62	151.90	9,148.2	-796.3	425.2	-776.8	0.00	0.00	0.00
9,300.0	6.62	151.90	9,247.5	-806.4	430.6	-786.7	0.00	0.00	0.00
9,400.0	6.62	151.90	9,346.9	-816.6	436.0	-796.7	0.00	0.00	0.00
9,500.0	6.62	151.90	9,446.2	-826.8	441.5	-806.6	0.00	0.00	0.00
9,600.0	6.62	151.90	9,545.5	-836.9	446.9	-816.5	0.00	0.00	0.00
9,700.0	6.62	151.90	9,644.9	-847.1	452.3	-826.4	0.00	0.00	0.00
9,800.0	6.62	151.90	9,744.2	-857.3	457.8	-836.3	0.00	0.00	0.00
9,900.0	6.62	151.90	9,843.5	-867.4	463.2	-846.2	0.00	0.00	0.00
10,000.0	6.62	151.90	9,942.9	-877.6	468.6	-856.2	0.00	0.00	0.00
10,100.0	6.62	151.90	10,042.2	-887.7	474.0	-866.1	0.00	0.00	0.00
10,200.0	6.62	151.90	10,141.5	-897.9	479.5	-876.0	0.00	0.00	0.00
10,300.0	6.62	151.90	10,240.9	-908.1	484.9	-885.9	0.00	0.00	0.00
10,320.7	6.62	151.90	10,261.4	-910.2	486.0	-888.0	0.00	0.00	0.00
10,400.0	5.03	151.90	10,340.3	-917.3	489.8	-894.9	2.00	-2.00	0.00
10,500.0	3.03	151.90	10,440.1	-923.5	493.1	-900.9	2.00	-2.00	0.00

EOG Resources

Planning Report



Database:	EDM	Local Co-ordinate Reference:	Well #504H
Company:	EOG Resources - Midland	TVD Reference:	KB = 25' @ 3694.0usft
Project:	Lea County, NM (NAD 83 NME)	MD Reference:	KB = 25' @ 3694.0usft
Site:	Driver 14 Fed Com	North Reference:	Grid
Well:	#504H	Survey Calculation Method:	Minimum Curvature
Wellbore:	OH		
Design:	Plan #0.2		

Planned Survey									
Measured Depth (usft)	Inclination (°)	Azimuth (°)	Vertical Depth (usft)	+N/-S (usft)	+E/-W (usft)	Vertical Section (usft)	Dogleg Rate (°/100usft)	Build Rate (°/100usft)	Turn Rate (°/100usft)
10,600.0	1.03	151.90	10,540.0	-926.6	494.8	-904.0	2.00	-2.00	0.00
10,651.5	0.00	0.00	10,591.5	-927.0	495.0	-904.4	2.00	-2.00	0.00
KOP(Driver 14 Fed Com #504H)									
10,675.0	2.82	0.00	10,615.0	-926.4	495.0	-903.8	11.99	11.99	0.00
10,700.0	5.81	0.00	10,639.9	-924.5	495.0	-901.9	11.99	11.99	0.00
10,725.0	8.81	0.00	10,664.7	-921.4	495.0	-898.7	11.99	11.99	0.00
10,750.0	11.81	0.00	10,689.3	-916.9	495.0	-894.3	11.99	11.99	0.00
10,775.0	14.81	0.00	10,713.6	-911.1	495.0	-888.5	11.99	11.99	0.00
10,800.0	17.81	0.00	10,737.6	-904.1	495.0	-881.5	11.99	11.99	0.00
10,825.0	20.80	0.00	10,761.2	-895.8	495.0	-873.2	11.99	11.99	0.00
10,850.0	23.80	0.00	10,784.3	-886.4	495.0	-863.8	11.99	11.99	0.00
10,872.1	26.45	0.00	10,804.3	-877.0	495.0	-854.4	11.99	11.99	0.00
FTP(Driver 14 Fed Com #504H)									
10,875.0	26.80	359.99	10,806.9	-875.7	495.0	-853.1	12.00	12.00	-0.23
10,900.0	29.80	359.94	10,828.9	-863.8	495.0	-841.3	12.00	12.00	-0.21
10,925.0	32.80	359.90	10,850.3	-850.8	495.0	-828.3	12.00	12.00	-0.17
10,950.0	35.80	359.86	10,871.0	-836.8	494.9	-814.2	12.00	12.00	-0.15
10,975.0	38.80	359.83	10,890.8	-821.6	494.9	-799.1	12.00	12.00	-0.13
11,000.0	41.80	359.80	10,909.9	-805.4	494.9	-782.9	12.00	12.00	-0.11
11,025.0	44.80	359.78	10,928.1	-788.3	494.8	-765.8	12.00	12.00	-0.10
11,050.0	47.80	359.76	10,945.4	-770.2	494.7	-747.8	12.00	12.00	-0.09
11,075.0	50.80	359.74	10,961.7	-751.3	494.6	-728.8	12.00	12.00	-0.08
11,100.0	53.80	359.72	10,977.0	-731.5	494.5	-709.1	12.00	12.00	-0.07
11,125.0	56.80	359.70	10,991.2	-710.9	494.4	-688.6	12.00	12.00	-0.07
11,150.0	59.80	359.69	11,004.3	-689.7	494.3	-667.3	12.00	12.00	-0.06
11,175.0	62.80	359.67	11,016.3	-667.8	494.2	-645.4	12.00	12.00	-0.06
11,200.0	65.80	359.66	11,027.2	-645.2	494.1	-622.9	12.00	12.00	-0.06
11,225.0	68.80	359.64	11,036.8	-622.2	493.9	-599.9	12.00	12.00	-0.05
11,250.0	71.80	359.63	11,045.2	-598.6	493.8	-576.4	12.00	12.00	-0.05
11,275.0	74.80	359.62	11,052.4	-574.7	493.6	-552.5	12.00	12.00	-0.05
11,300.0	77.80	359.61	11,058.3	-550.4	493.5	-528.2	12.00	12.00	-0.05
11,325.0	80.80	359.59	11,063.0	-525.9	493.3	-503.7	12.00	12.00	-0.05
11,350.0	83.80	359.58	11,066.3	-501.1	493.1	-478.9	12.00	12.00	-0.05
11,375.0	86.80	359.57	11,068.4	-476.2	492.9	-454.1	12.00	12.00	-0.05
11,401.7	90.00	359.56	11,069.1	-449.5	492.7	-427.4	12.00	12.00	-0.05
11,500.0	90.00	359.56	11,069.1	-351.2	492.0	-329.2	0.00	0.00	0.00
11,600.0	90.00	359.56	11,069.1	-251.2	491.2	-229.4	0.00	0.00	0.00
11,700.0	90.00	359.56	11,069.1	-151.2	490.4	-129.5	0.00	0.00	0.00
11,800.0	90.00	359.56	11,069.1	-51.2	489.6	-29.6	0.00	0.00	0.00
11,900.0	90.00	359.56	11,069.1	48.8	488.9	70.2	0.00	0.00	0.00
12,000.0	90.00	359.56	11,069.1	148.8	488.1	170.1	0.00	0.00	0.00
12,100.0	90.00	359.56	11,069.1	248.8	487.3	270.0	0.00	0.00	0.00
12,200.0	90.00	359.56	11,069.1	348.8	486.6	369.8	0.00	0.00	0.00
12,300.0	90.00	359.56	11,069.1	448.8	485.8	469.7	0.00	0.00	0.00
12,400.0	90.00	359.56	11,069.1	548.8	485.0	569.6	0.00	0.00	0.00
12,500.0	90.00	359.56	11,069.1	648.8	484.2	669.4	0.00	0.00	0.00
12,600.0	90.00	359.56	11,069.1	748.8	483.5	769.3	0.00	0.00	0.00
12,700.0	90.00	359.56	11,069.1	848.8	482.7	869.2	0.00	0.00	0.00
12,800.0	90.00	359.56	11,069.1	948.8	481.9	969.0	0.00	0.00	0.00
12,900.0	90.00	359.56	11,069.1	1,048.8	481.2	1,068.9	0.00	0.00	0.00
13,000.0	90.00	359.56	11,069.1	1,148.8	480.4	1,168.8	0.00	0.00	0.00
13,100.0	90.00	359.56	11,069.1	1,248.8	479.6	1,268.6	0.00	0.00	0.00
13,200.0	90.00	359.56	11,069.1	1,348.8	478.8	1,368.5	0.00	0.00	0.00
13,300.0	90.00	359.56	11,069.1	1,448.8	478.1	1,468.4	0.00	0.00	0.00



EOG Resources

Planning Report

Database:	EDM	Local Co-ordinate Reference:	Well #504H
Company:	EOG Resources - Midland	TVD Reference:	KB = 25' @ 3694.0usft
Project:	Lea County, NM (NAD 83 NME)	MD Reference:	KB = 25' @ 3694.0usft
Site:	Driver 14 Fed Com	North Reference:	Grid
Well:	#504H	Survey Calculation Method:	Minimum Curvature
Wellbore:	OH		
Design:	Plan #0.2		

Planned Survey									
Measured Depth (usft)	Inclination (°)	Azimuth (°)	Vertical Depth (usft)	+N/-S (usft)	+E/-W (usft)	Vertical Section (usft)	Dogleg Rate (°/100usft)	Build Rate (°/100usft)	Turn Rate (°/100usft)
13,400.0	90.00	359.56	11,069.1	1,548.8	477.3	1,568.2	0.00	0.00	0.00
13,500.0	90.00	359.56	11,069.1	1,648.8	476.5	1,668.1	0.00	0.00	0.00
13,600.0	90.00	359.56	11,069.1	1,748.8	475.7	1,768.0	0.00	0.00	0.00
13,700.0	90.00	359.56	11,069.1	1,848.7	475.0	1,867.8	0.00	0.00	0.00
13,800.0	90.00	359.56	11,069.1	1,948.7	474.2	1,967.7	0.00	0.00	0.00
13,900.0	90.00	359.56	11,069.1	2,048.7	473.4	2,067.6	0.00	0.00	0.00
14,000.0	90.00	359.56	11,069.1	2,148.7	472.7	2,167.4	0.00	0.00	0.00
14,100.0	90.00	359.56	11,069.1	2,248.7	471.9	2,267.3	0.00	0.00	0.00
14,200.0	90.00	359.56	11,069.1	2,348.7	471.1	2,367.2	0.00	0.00	0.00
14,300.0	90.00	359.56	11,069.1	2,448.7	470.3	2,467.0	0.00	0.00	0.00
14,400.0	90.00	359.56	11,069.0	2,548.7	469.6	2,566.9	0.00	0.00	0.00
14,500.0	90.00	359.56	11,069.0	2,648.7	468.8	2,666.8	0.00	0.00	0.00
14,600.0	90.00	359.56	11,069.0	2,748.7	468.0	2,766.6	0.00	0.00	0.00
14,700.0	90.00	359.56	11,069.0	2,848.7	467.3	2,866.5	0.00	0.00	0.00
14,800.0	90.00	359.56	11,069.0	2,948.7	466.5	2,966.4	0.00	0.00	0.00
14,900.0	90.00	359.56	11,069.0	3,048.7	465.7	3,066.2	0.00	0.00	0.00
15,000.0	90.00	359.56	11,069.0	3,148.7	464.9	3,166.1	0.00	0.00	0.00
15,100.0	90.00	359.56	11,069.0	3,248.7	464.2	3,266.0	0.00	0.00	0.00
15,200.0	90.00	359.56	11,069.0	3,348.7	463.4	3,365.8	0.00	0.00	0.00
15,300.0	90.00	359.56	11,069.0	3,448.7	462.6	3,465.7	0.00	0.00	0.00
15,400.0	90.00	359.56	11,069.0	3,548.7	461.9	3,565.6	0.00	0.00	0.00
15,500.0	90.00	359.56	11,069.0	3,648.7	461.1	3,665.4	0.00	0.00	0.00
15,600.0	90.00	359.56	11,069.0	3,748.7	460.3	3,765.3	0.00	0.00	0.00
15,700.0	90.00	359.56	11,069.0	3,848.7	459.5	3,865.2	0.00	0.00	0.00
15,800.0	90.00	359.56	11,069.0	3,948.7	458.8	3,965.0	0.00	0.00	0.00
15,900.0	90.00	359.56	11,069.0	4,048.7	458.0	4,064.9	0.00	0.00	0.00
16,000.0	90.00	359.56	11,069.0	4,148.7	457.2	4,164.8	0.00	0.00	0.00
16,100.0	90.00	359.56	11,069.0	4,248.7	456.5	4,264.6	0.00	0.00	0.00
16,158.3	90.00	359.56	11,069.0	4,307.0	456.0	4,322.9	0.00	0.00	0.00
Fed Perf(Driver 14 Fed Com #504H)									
16,158.9	90.00	359.57	11,069.0	4,307.6	456.0	4,323.4	2.00	-0.29	1.98
16,200.0	90.00	359.57	11,069.0	4,348.7	455.7	4,364.5	0.00	0.00	0.00
16,300.0	90.00	359.57	11,069.0	4,448.7	454.9	4,464.4	0.00	0.00	0.00
16,400.0	90.00	359.57	11,069.0	4,548.7	454.2	4,564.2	0.00	0.00	0.00
16,500.0	90.00	359.57	11,069.0	4,648.7	453.4	4,664.1	0.00	0.00	0.00
16,600.0	90.00	359.57	11,069.0	4,748.7	452.7	4,764.0	0.00	0.00	0.00
16,700.0	90.00	359.57	11,069.0	4,848.7	451.9	4,863.8	0.00	0.00	0.00
16,800.0	90.00	359.57	11,069.0	4,948.7	451.2	4,963.7	0.00	0.00	0.00
16,900.0	90.00	359.57	11,069.0	5,048.7	450.4	5,063.6	0.00	0.00	0.00
17,000.0	90.00	359.57	11,069.0	5,148.7	449.7	5,163.4	0.00	0.00	0.00
17,100.0	90.00	359.57	11,069.0	5,248.6	448.9	5,263.3	0.00	0.00	0.00
17,200.0	90.00	359.57	11,069.0	5,348.6	448.2	5,363.2	0.00	0.00	0.00
17,300.0	90.00	359.57	11,069.0	5,448.6	447.4	5,463.0	0.00	0.00	0.00
17,400.0	90.00	359.57	11,069.0	5,548.6	446.7	5,562.9	0.00	0.00	0.00
17,500.0	90.00	359.57	11,069.0	5,648.6	445.9	5,662.8	0.00	0.00	0.00
17,600.0	90.00	359.57	11,069.0	5,748.6	445.1	5,762.6	0.00	0.00	0.00
17,700.0	90.00	359.57	11,069.0	5,848.6	444.4	5,862.5	0.00	0.00	0.00
17,800.0	90.00	359.57	11,069.0	5,948.6	443.6	5,962.4	0.00	0.00	0.00
17,900.0	90.00	359.57	11,069.0	6,048.6	442.9	6,062.2	0.00	0.00	0.00
18,000.0	90.00	359.57	11,069.0	6,148.6	442.1	6,162.1	0.00	0.00	0.00
18,100.0	90.00	359.57	11,069.0	6,248.6	441.4	6,262.0	0.00	0.00	0.00
18,200.0	90.00	359.57	11,069.0	6,348.6	440.6	6,361.8	0.00	0.00	0.00
18,300.0	90.00	359.57	11,069.0	6,448.6	439.9	6,461.7	0.00	0.00	0.00



EOG Resources

Planning Report

Database:	EDM	Local Co-ordinate Reference:	Well #504H
Company:	EOG Resources - Midland	TVD Reference:	KB = 25' @ 3694.0usft
Project:	Lea County, NM (NAD 83 NME)	MD Reference:	KB = 25' @ 3694.0usft
Site:	Driver 14 Fed Com	North Reference:	Grid
Well:	#504H	Survey Calculation Method:	Minimum Curvature
Wellbore:	OH		
Design:	Plan #0.2		

Planned Survey										
Measured Depth (usft)	Inclination (°)	Azimuth (°)	Vertical Depth (usft)	+N/-S (usft)	+E/-W (usft)	Vertical Section (usft)	Dogleg Rate (°/100usft)	Build Rate (°/100usft)	Turn Rate (°/100usft)	
18,400.0	90.00	359.57	11,069.0	6,548.6	439.1	6,561.6	0.00	0.00	0.00	
18,500.0	90.00	359.57	11,069.0	6,648.6	438.4	6,661.4	0.00	0.00	0.00	
18,600.0	90.00	359.57	11,069.0	6,748.6	437.6	6,761.3	0.00	0.00	0.00	
18,700.0	90.00	359.57	11,069.0	6,848.6	436.9	6,861.2	0.00	0.00	0.00	
18,800.0	90.00	359.57	11,069.0	6,948.6	436.1	6,961.0	0.00	0.00	0.00	
18,900.0	90.00	359.57	11,069.0	7,048.6	435.4	7,060.9	0.00	0.00	0.00	
19,000.0	90.00	359.57	11,069.0	7,148.6	434.6	7,160.8	0.00	0.00	0.00	
19,100.0	90.00	359.57	11,069.0	7,248.6	433.9	7,260.7	0.00	0.00	0.00	
19,200.0	90.00	359.57	11,069.0	7,348.6	433.1	7,360.5	0.00	0.00	0.00	
19,300.0	90.00	359.57	11,069.0	7,448.6	432.4	7,460.4	0.00	0.00	0.00	
19,400.0	90.00	359.57	11,069.0	7,548.6	431.6	7,560.3	0.00	0.00	0.00	
19,500.0	90.00	359.57	11,069.0	7,648.6	430.8	7,660.1	0.00	0.00	0.00	
19,600.0	90.00	359.57	11,069.0	7,748.6	430.1	7,760.0	0.00	0.00	0.00	
19,700.0	90.00	359.57	11,069.0	7,848.6	429.3	7,859.9	0.00	0.00	0.00	
19,800.0	90.00	359.57	11,069.0	7,948.6	428.6	7,959.7	0.00	0.00	0.00	
19,900.0	90.00	359.57	11,069.0	8,048.6	427.8	8,059.6	0.00	0.00	0.00	
20,000.0	90.00	359.57	11,069.0	8,148.6	427.1	8,159.5	0.00	0.00	0.00	
20,100.0	90.00	359.57	11,069.0	8,248.6	426.3	8,259.3	0.00	0.00	0.00	
20,200.0	90.00	359.57	11,069.0	8,348.6	425.6	8,359.2	0.00	0.00	0.00	
20,300.0	90.00	359.57	11,069.0	8,448.6	424.8	8,459.1	0.00	0.00	0.00	
20,400.0	90.00	359.57	11,069.0	8,548.6	424.1	8,558.9	0.00	0.00	0.00	
20,500.0	90.00	359.57	11,069.0	8,648.6	423.3	8,658.8	0.00	0.00	0.00	
20,600.0	90.00	359.57	11,069.0	8,748.6	422.6	8,758.7	0.00	0.00	0.00	
20,700.0	90.00	359.57	11,069.0	8,848.5	421.8	8,858.5	0.00	0.00	0.00	
20,800.0	90.00	359.57	11,069.0	8,948.5	421.1	8,958.4	0.00	0.00	0.00	
20,900.0	90.00	359.57	11,069.0	9,048.5	420.3	9,058.3	0.00	0.00	0.00	
21,000.0	90.00	359.57	11,069.0	9,148.5	419.6	9,158.1	0.00	0.00	0.00	
21,100.0	90.00	359.57	11,069.0	9,248.5	418.8	9,258.0	0.00	0.00	0.00	
21,200.0	90.00	359.57	11,069.0	9,348.5	418.0	9,357.9	0.00	0.00	0.00	
21,300.0	90.00	359.57	11,069.0	9,448.5	417.3	9,457.7	0.00	0.00	0.00	
21,339.5	90.00	359.57	11,069.0	9,488.0	417.0	9,497.2	0.00	0.00	0.00	
PBHL(Driver 14 Fed Com #504H)										

Design Targets										
Target Name	Dip Angle (°)	Dip Dir. (°)	TVD (usft)	+N/-S (usft)	+E/-W (usft)	Northing (usft)	Easting (usft)	Latitude	Longitude	
KOP(Driver 14 Fed Com - plan hits target center - Point	0.00	0.00	10,591.5	-927.0	495.0	472,886.00	785,827.00	32.2975573°N	103.5420719°W	
FTP(Driver 14 Fed Com - plan hits target center - Point	0.00	0.00	10,804.3	-877.0	495.0	472,936.00	785,827.00	32.2976948°N	103.5420707°W	
Fed Perf(Driver 14 Fed Com - plan hits target center - Point	0.00	0.00	11,069.0	4,307.0	456.0	478,120.00	785,788.00	32.3119443°N	103.5420731°W	
PBHL(Driver 14 Fed Com - plan hits target center - Point	0.00	0.00	11,069.0	9,488.0	417.0	483,301.00	785,749.00	32.3261856°N	103.5420755°W	

**EOG Resources**

Planning Report

Database:	EDM	Local Co-ordinate Reference:	Well #504H
Company:	EOG Resources - Midland	TVD Reference:	KB = 25' @ 3694.0usft
Project:	Lea County, NM (NAD 83 NME)	MD Reference:	KB = 25' @ 3694.0usft
Site:	Driver 14 Fed Com	North Reference:	Grid
Well:	#504H	Survey Calculation Method:	Minimum Curvature
Wellbore:	OH		
Design:	Plan #0.2		

PECOS DISTRICT DRILLING CONDITIONS OF APPROVAL

OPERATOR'S NAME:	EOG RESOURCES
LEASE NO.:	NMNM114985
WELL NAME & NO.:	DRIVER 14 FED COM 503H-506H
LOCATION:	Section 14, T.23 S., R.33 E., NMPM
COUNTY:	Lea County, New Mexico

COA

H2S	<input type="radio"/> Yes	<input checked="" type="radio"/> No	
Potash	<input checked="" type="radio"/> None	<input type="radio"/> Secretary	<input type="radio"/> R-111-P
Cave/Karst Potential	<input checked="" type="radio"/> Low	<input type="radio"/> Medium	<input type="radio"/> High
Cave/Karst Potential	<input type="radio"/> Critical		
Variance	<input type="radio"/> None	<input checked="" type="radio"/> Flex Hose	<input type="radio"/> Other
Wellhead	<input type="radio"/> Conventional	<input checked="" type="radio"/> Multibowl	<input type="radio"/> Both
Other	<input type="checkbox"/> 4 String Area	<input type="checkbox"/> Capitan Reef	<input type="checkbox"/> WIPP
Other	<input type="checkbox"/> Fluid Filled	<input type="checkbox"/> Cement Squeeze	<input type="checkbox"/> Pilot Hole
Special Requirements	<input type="checkbox"/> Water Disposal	<input checked="" type="checkbox"/> COM	<input type="checkbox"/> Unit

A. HYDROGEN SULFIDE

1. Hydrogen Sulfide (H2S) monitors shall be installed prior to drilling out the surface shoe. If H2S is detected in concentrations greater than 100 ppm, the Hydrogen Sulfide area shall meet Onshore Order 6 requirements, which includes equipment and personnel/public protection items. If Hydrogen Sulfide is encountered, provide measured values and formations to the BLM.

B. CASING

1. The **13-3/8** inch surface casing shall be set at approximately **1,470** feet (a minimum of **25 feet (Lea County)** into the Rustler Anhydrite and above the salt) and cemented to the surface.
 - a. If cement does not circulate to the surface, the appropriate BLM office shall be notified and a temperature survey utilizing an electronic type temperature survey with surface log readout will be used or a cement bond log shall be run to verify the top of the cement. Temperature survey will be run a minimum of six hours after pumping cement and ideally between 8-10 hours after completing the cement job.
 - b. Wait on cement (WOC) time for a primary cement job will be a minimum of **8 hours** or 500 pounds compressive strength, whichever is greater. (This is to include the lead cement)

- c. Wait on cement (WOC) time for a remedial job will be a minimum of 4 hours after bringing cement to surface or 500 pounds compressive strength, whichever is greater.
 - d. If cement falls back, remedial cementing will be done prior to drilling out that string.
2. The minimum required fill of cement behind the **9-5/8** inch intermediate casing is:
 - Cement to surface. If cement does not circulate see B.1.a, c-d above.
Wait on cement (WOC) time for a primary cement job is to include the lead cement slurry due to cave/karst or potash.
3. The minimum required fill of cement behind the **5-1/2** inch production casing is:
 - Cement should tie-back at least **200 feet** into previous casing string. Operator shall provide method of verification.

C. PRESSURE CONTROL

1. Variance approved to use flex line from BOP to choke manifold. Manufacturer's specification to be readily available. No external damage to flex line. Flex line to be installed as straight as possible (no hard bends).'
2. Operator has proposed a multi-bowl wellhead assembly. This assembly will only be tested when installed on the surface casing. Minimum working pressure of the blowout preventer (BOP) and related equipment (BOPE) required for drilling below the surface casing shoe shall be **5000 (5M)** psi.
 - a. Wellhead shall be installed by manufacturer's representatives, submit documentation with subsequent sundry.
 - b. If the welding is performed by a third party, the manufacturer's representative shall monitor the temperature to verify that it does not exceed the maximum temperature of the seal.
 - c. Manufacturer representative shall install the test plug for the initial BOP test.
 - d. If the cement does not circulate and one inch operations would have been possible with a standard wellhead, the well head shall be cut off, cementing operations performed and another wellhead installed.
 - e. Whenever any seal subject to test pressure is broken, all the tests in OOGO2.III.A.2.i must be followed.

D. SPECIAL REQUIREMENT (S)**Communitization Agreement**

- The operator will submit a Communitization Agreement to the Santa Fe Office, 301 Dinosaur Trail Santa Fe, New Mexico 87508, at least 90 days before the anticipated date of first production from a well subject to a spacing order issued by the New Mexico Oil Conservation Division. The Communitization Agreement will include the signatures of all working interest owners in all Federal and Indian leases subject to the Communitization Agreement (i.e., operating rights owners and lessees of record), or certification that the operator has obtained the written signatures of all such owners and will make those signatures available to the BLM immediately upon request.
- If the operator does not comply with this condition of approval, the BLM may take enforcement actions that include, but are not limited to, those specified in 43 CFR 3163.1.
- In addition, the well sign shall include the surface and bottom hole lease numbers. When the Communitization Agreement number is known, it shall also be on the sign.

JJP02232021**GENERAL REQUIREMENTS**

The BLM is to be notified in advance for a representative to witness:

- a. Spudding well (minimum of 24 hours)
- b. Setting and/or Cementing of all casing strings (minimum of 4 hours)
- c. BOPE tests (minimum of 4 hours)

☒ Eddy County

Call the Carlsbad Field Office, 620 East Greene St., Carlsbad, NM 88220,
(575) 361-2822

☒ Lea County

Call the Hobbs Field Station, 414 West Taylor, Hobbs NM 88240, (575)
393-3612

1. Unless the production casing has been run and cemented or the well has been properly plugged, the drilling rig shall not be removed from over the hole without prior approval.
 - a. In the event the operator has proposed to drill multiple wells utilizing a skid/walking rig. Operator shall secure the wellbore on the current well, after installing and testing the wellhead, by installing a blind flange of like pressure rating to the wellhead and a pressure gauge that can be monitored while drilling is performed on the other well(s).
 - b. When the operator proposes to set surface casing with Spudder Rig

- Notify the BLM when moving in and removing the Spudder Rig.
 - Notify the BLM when moving in the 2nd Rig. Rig to be moved in within 90 days of notification that Spudder Rig has left the location.
 - BOP/BOPE test to be conducted per Onshore Oil and Gas Order No. 2 as soon as 2nd Rig is rigged up on well.
2. Floor controls are required for 3M or Greater systems. These controls will be on the rig floor, unobstructed, readily accessible to the driller and will be operational at all times during drilling and/or completion activities. Rig floor is defined as the area immediately around the rotary table; the area immediately above the substructure on which the draw works are located, this does not include the dog house or stairway area.
 3. The record of the drilling rate along with the GR/N well log run from TD to surface (horizontal well – vertical portion of hole) shall be submitted to the BLM office as well as all other logs run on the borehole 30 days from completion. If available, a digital copy of the logs is to be submitted in addition to the paper copies. The Rustler top and top and bottom of Salt are to be recorded on the Completion Report.

A. CASING

1. Changes to the approved APD casing program need prior approval if the items substituted are of lesser grade or different casing size or are Non-API. The Operator can exchange the components of the proposal with that of superior strength (i.e. changing from J-55 to N-80, or from 36# to 40#). Changes to the approved cement program need prior approval if the altered cement plan has less volume or strength or if the changes are substantial (i.e. Multistage tool, ECP, etc.). The initial wellhead installed on the well will remain on the well with spools used as needed.
2. Wait on cement (WOC) for Potash Areas: After cementing but before commencing any tests, the casing string shall stand cemented under pressure until both of the following conditions have been met: 1) cement reaches a minimum compressive strength of 500 psi for all cement blends, 2) until cement has been in place at least 24 hours. WOC time will be recorded in the driller's log. The casing integrity test can be done (prior to the cement setting up) immediately after bumping the plug.
3. Wait on cement (WOC) for Water Basin: After cementing but before commencing any tests, the casing string shall stand cemented under pressure until both of the following conditions have been met: 1) cement reaches a minimum compressive strength of 500 psi at the shoe, 2) until cement has been in place at least 8 hours. WOC time will be recorded in the driller's log. See individual casing strings for details regarding lead cement slurry requirements. The casing integrity test can be done (prior to the cement setting up) immediately after bumping the plug.

4. Provide compressive strengths including hours to reach required 500 pounds compressive strength prior to cementing each casing string. Have well specific cement details onsite prior to pumping the cement for each casing string.
5. No pea gravel permitted for remedial or fall back remedial without prior authorization from the BLM engineer.
6. On that portion of any well approved for a 5M BOPE system or greater, a pressure integrity test of each casing shoe shall be performed. Formation at the shoe shall be tested to a minimum of the mud weight equivalent anticipated to control the formation pressure to the next casing depth or at total depth of the well. This test shall be performed before drilling more than 20 feet of new hole.
7. If hardband drill pipe is rotated inside casing, returns will be monitored for metal. If metal is found in samples, drill pipe will be pulled and rubber protectors which have a larger diameter than the tool joints of the drill pipe will be installed prior to continuing drilling operations.
8. Whenever a casing string is cemented in the R-111-P potash area, the NMOCD requirements shall be followed.

B. PRESSURE CONTROL

1. All blowout preventer (BOP) and related equipment (BOPE) shall comply with well control requirements as described in Onshore Oil and Gas Order No. 2 and API RP 53 Sec. 17.
2. If a variance is approved for a flexible hose to be installed from the BOP to the choke manifold, the following requirements apply: The flex line must meet the requirements of API 16C. Check condition of flexible line from BOP to choke manifold, replace if exterior is damaged or if line fails test. Line to be as straight as possible with no hard bends and is to be anchored according to Manufacturer's requirements. The flexible hose can be exchanged with a hose of equal size and equal or greater pressure rating. Anchor requirements, specification sheet and hydrostatic pressure test certification matching the hose in service, to be onsite for review. These documents shall be posted in the company man's trailer and on the rig floor.
3. 5M or higher system requires an HCR valve, remote kill line and annular to match. The remote kill line is to be installed prior to testing the system and tested to stack pressure.
4. If the operator has proposed a multi-bowl wellhead assembly in the APD. The following requirements must be met:
 - a. Wellhead shall be installed by manufacturer's representatives, submit documentation with subsequent sundry.

- b. If the welding is performed by a third party, the manufacturer's representative shall monitor the temperature to verify that it does not exceed the maximum temperature of the seal.
 - c. Manufacturer representative shall install the test plug for the initial BOP test.
 - d. Whenever any seal subject to test pressure is broken, all the tests in OOGO2.III.A.2.i must be followed.
 - e. If the cement does not circulate and one inch operations would have been possible with a standard wellhead, the well head shall be cut off, cementing operations performed and another wellhead installed.
5. The appropriate BLM office shall be notified a minimum of 4 hours in advance for a representative to witness the tests.
- a. In a water basin, for all casing strings utilizing slips, these are to be set as soon as the crew and rig are ready and any fallback cement remediation has been done. The casing cut-off and BOP installation can be initiated four hours after installing the slips, which will be approximately six hours after bumping the plug. For those casing strings not using slips, the minimum wait time before cut-off is eight hours after bumping the plug. BOP/BOPE testing can begin after cut-off or once cement reaches 500 psi compressive strength (including lead when specified), whichever is greater. However, if the float does not hold, cut-off cannot be initiated until cement reaches 500 psi compressive strength (including lead when specified).
 - b. In potash areas, for all casing strings utilizing slips, these are to be set as soon as the crew and rig are ready and any fallback cement remediation has been done. For all casing strings, casing cut-off and BOP installation can be initiated at twelve hours after bumping the plug. However, **no tests** shall commence until the cement has had a minimum of 24 hours setup time, except the casing pressure test can be initiated immediately after bumping the plug (only applies to single stage cement jobs).
 - c. The tests shall be done by an independent service company utilizing a test plug not a cup or J-packer. The operator also has the option of utilizing an independent tester to test without a plug (i.e. against the casing) pursuant to Onshore Order 2 with the pressure not to exceed 70% of the burst rating for the casing. Any test against the casing must meet the WOC time for water basin (8 hours) or potash (24 hours) or 500 pounds compressive strength, whichever is greater, prior to initiating the test (see casing segment as lead cement may be critical item).
 - d. The test shall be run on a 5000 psi chart for a 2-3M BOP/BOP, on a 10000 psi chart for a 5M BOP/BOPE and on a 15000 psi chart for a 10M BOP/BOPE. If a linear chart is used, it shall be a one hour chart. A circular chart shall

have a maximum 2 hour clock. If a twelve hour or twenty-four hour chart is used, tester shall make a notation that it is run with a two hour clock.

- e. The results of the test shall be reported to the appropriate BLM office.
- f. All tests are required to be recorded on a calibrated test chart. A copy of the BOP/BOPE test chart and a copy of independent service company test will be submitted to the appropriate BLM office.
- g. The BOP/BOPE test shall include a low pressure test from 250 to 300 psi. The test will be held for a minimum of 10 minutes if test is done with a test plug and 30 minutes without a test plug. This test shall be performed prior to the test at full stack pressure.
- h. BOP/BOPE must be tested by an independent service company within 500 feet of the top of the Wolfcamp formation if the time between the setting of the intermediate casing and reaching this depth exceeds 20 days. This test does not exclude the test prior to drilling out the casing shoe as per Onshore Order No. 2.

C. DRILLING MUD

Mud system monitoring equipment, with derrick floor indicators and visual and audio alarms, shall be operating before drilling into the Wolfcamp formation, and shall be used until production casing is run and cemented.

D. WASTE MATERIAL AND FLUIDS

All waste (i.e. drilling fluids, trash, salts, chemicals, sewage, gray water, etc.) created as a result of drilling operations and completion operations shall be safely contained and disposed of properly at a waste disposal facility. No waste material or fluid shall be disposed of on the well location or surrounding area.

Porto-johns and trash containers will be on-location during fracturing operations or any other crew-intensive operations.

**EOG RESOURCES, INC.
DRIVER 14 FED COM #504**

Hydrogen Sulfide Plan Summary

- A. All personnel shall receive proper H₂S training in accordance with Onshore Order III.C.3.a.
- B. Briefing Area: two perpendicular areas will be designated by signs and readily accessible.
- C. Required Emergency Equipment:

- Well control equipment
 - a. Flare line 150' from wellhead to be ignited by flare gun.
 - b. Choke manifold with a remotely operated choke.
 - c. Mud/gas separator

- Protective equipment for essential personnel.

Breathing apparatus:

- a. Rescue Packs (SCBA) — 1 unit shall be placed at each breathing area, 2 shall be stored in the safety trailer.
- b. Work/Escapes packs — 4 packs shall be stored on the rig floor with sufficient air hose not to restrict work activity.
- c. Emergency Escape Packs — 4 packs shall be stored in the doghouse for emergency evacuation.

Auxiliary Rescue Equipment:

- a. Stretcher
- b. Two OSHA full body harness
- c. 100 ft 5/8 inch OSHA approved rope
- d. 1-20# class ABC fire extinguisher

- H₂S detection and monitoring equipment:

The stationary detector with three sensors will be placed in the upper dog house if equipped, set to visually alarm @ 10 ppm and audible @ 14 ppm. Calibrate a minimum of every 30 days or as needed. The sensors will be placed in the following places: Rig floor / Bell nipple / End of flow line or where well bore fluid is being discharged.

(Gas sample tubes will be stored in the safety trailer)

- Visual warning systems.
 - a. One color code condition sign will be placed at the entrance to the site reflecting the possible conditions at the site.
 - b. A colored condition flag will be on display, reflecting the current condition at the site at the time.
 - c. Two wind socks will be placed in strategic locations, visible from all angles.

**EOG RESOURCES, INC.
DRIVER 14 FED COM #504**

- **Mud program:**
The mud program has been designed to minimize the volume of H₂S circulated to surface. The operator will have the necessary mud products to minimize hazards while drilling in H₂S bearing zones.
- **Metallurgy:**
All drill strings, casings, tubing, wellhead, blowout preventer, drilling spool, kill lines, choke manifold and lines, and valves shall be suitable for H₂S service.
- **Communication:**
Communication will be via cell phones and land lines where available.

**EOG RESOURCES, INC.
DRIVER 14 FED COM #504**

Emergency Assistance Telephone List

PUBLIC SAFETY: **911 or**

Lea County Sheriff's Department	(575) 396-3611
Rod Coffman	
Fire Department:	
Carlsbad	(575) 885-3125
Artesia	(575) 746-5050
Hospitals:	
Carlsbad	(575) 887-4121
Artesia	(575) 748-3333
Hobbs	(575) 392-1979
Dept. of Public Safety/Carlsbad	(575) 748-9718
Highway Department	(575) 885-3281
New Mexico Oil Conservation	(575) 476-3440
U.S. Dept. of Labor	(575) 887-1174

EOG Resources, Inc.

EOG / Midland	Office (432) 686-3600
---------------	-----------------------

Company Drilling Consultants:

Jett Dueitt	Cell (432) 230-4840
Blake Burney	

Drilling Engineer

Steve Munsell	Office (432) 686-3609
	Cell (432) 894-1256

Drilling Manager

Aj Dach	Office (432) 686-3751
	Cell (817) 480-1167

Drilling Superintendent

Jason Townsend	Office (432) 848-9209
	Cell (210) 776-5131

H&P Drilling

H&P Drilling	Office (432) 563-5757
H&P 415 Drilling Rig	Rig (432) 230-4840

Tool Pusher:

Johnathan Craig	Cell (817) 760-6374
Brad Garrett	

Safety

Brian Chandler (HSE Manager)	Office (432) 686-3695
	Cell (817) 239-0251

District I

1625 N. French Dr., Hobbs, NM 88240
Phone:(575) 393-6161 Fax:(575) 393-0720

District II

811 S. First St., Artesia, NM 88210
Phone:(575) 748-1283 Fax:(575) 748-9720

District III

1000 Rio Brazos Rd., Aztec, NM 87410
Phone:(505) 334-6178 Fax:(505) 334-6170

District IV

1220 S. St Francis Dr., Santa Fe, NM 87505
Phone:(505) 476-3470 Fax:(505) 476-3462

State of New Mexico
Energy, Minerals and Natural Resources
Oil Conservation Division
1220 S. St Francis Dr.
Santa Fe, NM 87505

CONDITIONS

Action 27032

CONDITIONS OF APPROVAL

Operator:	EOG RESOURCES INC	P.O. Box 2267	Midland, TX79702	OGRID:	7377	Action Number:	27032	Action Type:	FORM 3160-3
-----------	-------------------	---------------	------------------	--------	------	----------------	-------	--------------	-------------

OCD Reviewer	Condition
pkautz	Will require a File As Drilled C-102 and a Directional Survey with the C-104
pkautz	Once the well is spud, to prevent ground water contamination through whole or partial conduits from the surface, the operator shall drill without interruption through the fresh water zone or zones and shall immediately set in cement the water protection string