

Form 3160-3
(June 2015)FORM APPROVED
OMB No. 1004-0137
Expires: January 31, 2018

UNITED STATES
DEPARTMENT OF THE INTERIOR
BUREAU OF LAND MANAGEMENT
APPLICATION FOR PERMIT TO DRILL OR REENTER

1a. Type of work: <input type="checkbox"/> DRILL <input type="checkbox"/> REENTER 1b. Type of Well: <input type="checkbox"/> Oil Well <input type="checkbox"/> Gas Well <input type="checkbox"/> Other 1c. Type of Completion: <input type="checkbox"/> Hydraulic Fracturing <input type="checkbox"/> Single Zone <input type="checkbox"/> Multiple Zone		5. Lease Serial No. 6. If Indian, Allottee or Tribe Name 7. If Unit or CA Agreement, Name and No. 8. Lease Name and Well No.
2. Name of Operator		9. API Well No. 30 015 48306
3a. Address	3b. Phone No. (include area code)	10. Field and Pool, or Exploratory
4. Location of Well (Report location clearly and in accordance with any State requirements. *) At surface At proposed prod. zone		11. Sec., T. R. M. or Blk. and Survey or Area
14. Distance in miles and direction from nearest town or post office*		12. County or Parish
13. State		
15. Distance from proposed* location to nearest property or lease line, ft. (Also to nearest drig. unit line, if any)	16. No of acres in lease	17. Spacing Unit dedicated to this well
18. Distance from proposed location* to nearest well, drilling, completed, applied for, on this lease, ft.	19. Proposed Depth	20. BLM/BIA Bond No. in file
21. Elevations (Show whether DF, KDB, RT, GL, etc.)	22. Approximate date work will start*	23. Estimated duration
24. Attachments		

The following, completed in accordance with the requirements of Onshore Oil and Gas Order No. 1, and the Hydraulic Fracturing rule per 43 CFR 3162.3-3 (as applicable)

- | | |
|---------------------------------------------------------------------------------------------------------------------------------------------------------------------------------------------------------------------------|-----------------------------------------------------------------------------------------------------------------------------------------------------------------------------------------------------------------------|
| 1. Well plat certified by a registered surveyor.
2. A Drilling Plan.
3. A Surface Use Plan (if the location is on National Forest System Lands, the SUPO must be filed with the appropriate Forest Service Office). | 4. Bond to cover the operations unless covered by an existing bond on file (see Item 20 above).
5. Operator certification.
6. Such other site specific information and/or plans as may be requested by the BLM. |
|---------------------------------------------------------------------------------------------------------------------------------------------------------------------------------------------------------------------------|-----------------------------------------------------------------------------------------------------------------------------------------------------------------------------------------------------------------------|

25. Signature	Name (Printed/Typed)	Date
Title		
Approved by (Signature)	Name (Printed/Typed)	Date
Title		
Office		

Application approval does not warrant or certify that the applicant holds legal or equitable title to those rights in the subject lease which would entitle the applicant to conduct operations thereon.
Conditions of approval, if any, are attached.

Title 18 U.S.C. Section 1001 and Title 43 U.S.C. Section 1212, make it a crime for any person knowingly and willfully to make to any department or agency of the United States any false, fictitious or fraudulent statements or representations as to any matter within its jurisdiction.

(Continued on page 2)

*(Instructions on page 2)



District I
1625 N. French Dr., Hobbs, NM 88240
Phone: (575) 393-6161 Fax: (575) 393-0720
District II
811 S. First St., Artesia, NM 88210
Phone: (575) 748-1283 Fax: (575) 748-9720
District III
1000 Rio Brazos Road, Aztec, NM 87410
Phone: (505) 334-6178 Fax: (505) 334-6170
District IV
1220 S. St. Francis Dr., Santa Fe, NM 87505
Phone: (505) 476-3460 Fax: (505) 476-3462

State of New Mexico
Energy, Minerals & Natural Resources Department
OIL CONSERVATION DIVISION
1220 South St. Francis Dr.
Santa Fe, NM 87505

Form C-102
Revised August 1, 2011
Submit one copy to appropriate
District Office
☐ AMENDED REPORT

WELL LOCATION AND ACREAGE DEDICATION PLAT

¹ API Number 30 015 48306	² Pool Code 98220	³ Pool Name PURPLE SAGE; WOLFCAMP (GAS)
⁴ Property Code 330801	⁵ Property Name KYLE FEDERAL 24-28-34 WXY	⁶ Well Number 8H
⁷ OGRID No. 372098	⁸ Operator Name MARATHON OIL PERMIAN LLC	⁹ Elevation 2992'

¹⁰ Surface Location

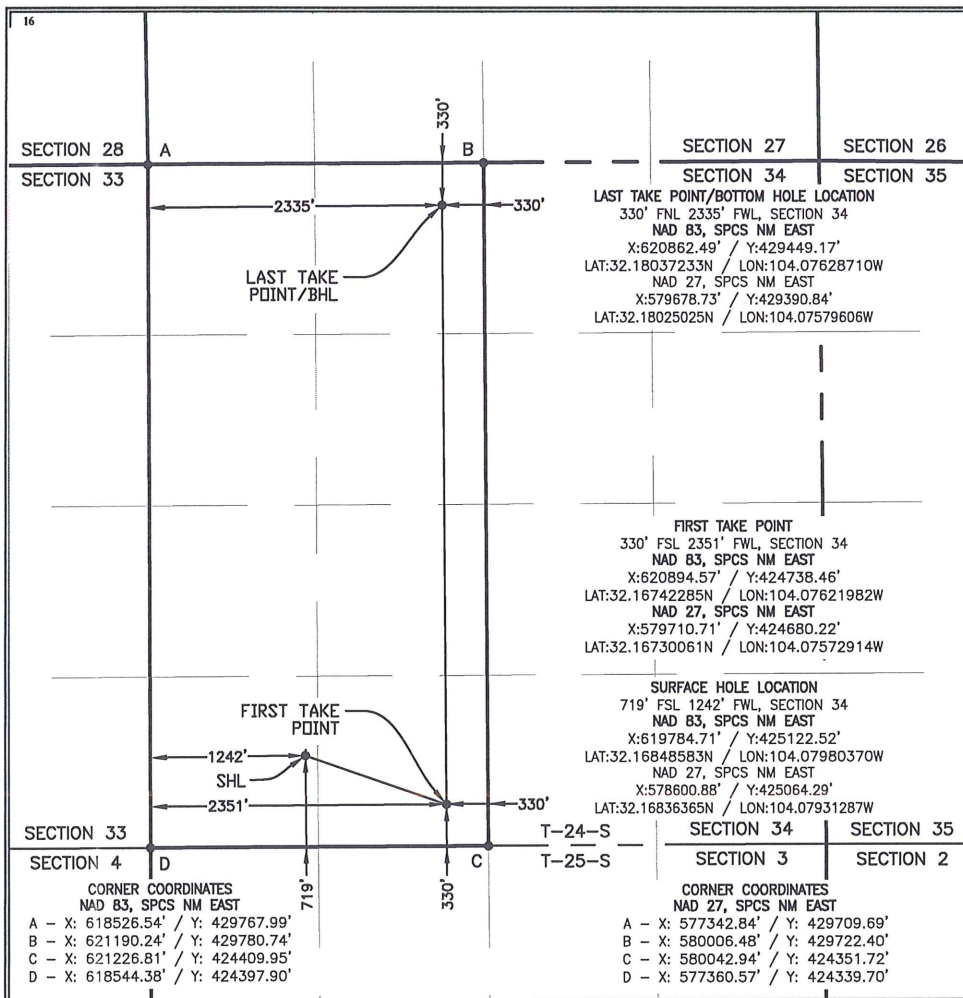
UL or lot no.	Section	Township	Range	Lot Idn	Feet from the	North/South line	Feet from the	East/West line	County
M	34	T24S	R28E		719	SOUTH	1242	WEST	EDDY

¹¹ Bottom Hole Location If Different From Surface

UL or lot no.	Section	Township	Range	Lot Idn	Feet from the	North/South line	Feet from the	East/West line	County
C	34	T24S	R28E		330	NORTH	2335	WEST	EDDY

¹² Dedicated Acres 320.00	¹³ Joint or Infill	¹⁴ Consolidation Code	¹⁵ Order No.
-----------------------------------------	-------------------------------	----------------------------------	-------------------------

No allowable will be assigned to this completion until all interests have been consolidated or a non-standard unit has been approved by the division.



¹⁷ OPERATOR CERTIFICATION

I hereby certify that the information contained herein is true and complete to the best of my knowledge and belief, and that this organization either owns a working interest or unleased mineral interest in the land including the proposed bottom hole location or has a right to drill this well at this location pursuant to a contract with an owner of such a mineral or working interest, or to a voluntary pooling agreement or a compulsory pooling order heretofore entered by the division.

Jennifer Van Curen 8/2/18
Signature Date

JENNIFER VAN CUREN
Printed Name

E-mail Address

¹⁸ SURVEYOR CERTIFICATION

I hereby certify that the well location shown on this plat was plotted from field notes of actual surveys made by me or under my supervision, and that the same is true and correct to the best of my belief.

JULY 13, 2018
Date of Survey

Signature and Seal of Professional Surveyor:

Certificate Number
DAVID W. MYERS 11403

1	07/02/18	JCS
REV.	DATE	BY

SHEET 1 OF 3
JOB No. R3752_006

District I
1625 N. French Dr., Hobbs, NM 88240
District II
811 S. First St., Artesia, NM 88210
District III
1000 Rio Brazos Road, Aztec, NM 87410
District IV
1220 S. St. Francis Dr., Santa Fe, NM 87505

State of New Mexico
Energy, Minerals and Natural Resources Department
Oil Conservation Division
1220 South St. Francis Dr.
Santa Fe, NM 87505

Submit Original
to Appropriate
District Office

GAS CAPTURE PLAN

Date: August 6th, 2018

☒ Original Operator & OGRID No.: Marathon Oil Permian LLC. 372098
☐ Amended - Reason for Amendment: _____

This Gas Capture Plan outlines actions to be taken by the Operator to reduce well/production facility flaring/venting for new completion (new drill, recomplete to new zone, re-frac) activity.

Note: Form C-129 must be submitted and approved prior to exceeding 60 days allowed by Rule (Subsection A of 19.15.18.12 NMAC).

Well(s)/Production Facility – Name of facility

The well(s) that will be located at the production facility are shown in the table below.

Well Name	API	Well Location (ULSTR)	Footages	Expected MCF/D	Flared or Vented	Comments
Kyle Federal 24 28 34 TB 1H		M-34-T24S-R28E	719' FSL 1212' FWL	1400	Flared	
Kyle Federal 24 28 34 WD 6H		M-34-T24S-R28E	719' FSL 1152' FWL	5000	Flared	
Kyle Federal 24 28 34 WXY 7H		M-34-T24S-R28E	719' FSL 1182' FWL	1775	Flared	
Kyle Federal 24 28 34 WXY 8H		M-34-T24S-R28E	719' FSL 1242' FWL	1775	Flared	

Gathering System and Pipeline Notification

Well(s) will be connected to a production facility after flowback operations are complete, if gas transporter system is in place. The gas produced from production facility is dedicated to Crestwood Equity Partners and will be connected to Crestwood Equity Partners low pressure gathering system located in Eddy County, New Mexico. It will require 1 mile of pipeline to connect the facility to low pressure gathering system. Marathon provides (periodically) to Crestwood Equity Partners a drilling, completion and estimated first production date for wells that are scheduled to be drilled in the foreseeable future. In addition, Marathon and Crestwood Equity Partners have periodic conference calls to discuss changes to drilling and completion schedules. Gas from these wells will be processed at Willow Lake System Processing Plant located in Eddy County, New Mexico. The actual flow of the gas will be based on compression operating parameters and gathering system pressures.

Flowback Strategy

After the fracture treatment/completion operations, well(s) will be produced to temporary production tanks and gas will be flared or vented. During flowback, the fluids and sand content will be monitored. When the produced fluids contain minimal sand, the wells will be turned to production facilities. Gas sales should start as soon as the wells start flowing through the production facilities, unless there are operational issues on Crestwood Equity Partners system at that time. Based on current information, it is Marathon's belief the system can take this gas upon completion of the well(s).

Safety requirements during cleanout operations from the use of underbalanced air cleanout systems may necessitate that sand and non-pipeline quality gas be vented and/or flared rather than sold on a temporary basis.

Alternatives to Reduce Flaring

Below are alternatives considered from a conceptual standpoint to reduce the amount of gas flared.

- Power Generation – On lease
 - Only a portion of gas is consumed operating the generator, remainder of gas will be flared
- Compressed Natural Gas – On lease
 - Gas flared would be minimal, but might be uneconomical to operate when gas volume declines
- NGL Removal – On lease
 - Plants are expensive, residue gas is still flared, and uneconomical to operate when gas volume declines



U.S. Department of the Interior
BUREAU OF LAND MANAGEMENT

Drilling Plan Data Report

05/04/2021

APD ID: 10400032931

Submission Date: 08/16/2018

Highlighted data
reflects the most
recent changes

Operator Name: MARATHON OIL PERMIAN LLC

Well Name: KYLE FEDERAL 24 28 34 WXY

Well Number: 8H

[Show Final Text](#)

Well Type: CONVENTIONAL GAS WELL

Well Work Type: Drill

Section 1 - Geologic Formations

Formation ID	Formation Name	Elevation	True Vertical Depth	Measured Depth	Lithologies	Mineral Resources	Producing Formation
282995	SALADO	2992	686	686	ANHYDRITE, DOLOMITE	OTHER : Brine	N
283009	CASTILE	2038	954	954	ANHYDRITE, SALT	OTHER : Brine	N
283010	BASE OF SALT	522	2470	2489	LIMESTONE, SALT, SANDSTONE	OTHER : Brine	N
282999	LAMAR	383	2609	2632	SANDSTONE, SHALE	NATURAL GAS, OIL	N
283000	LAMAR	328	2664	2688	SANDSTONE, SHALE	OIL	N
283017	BELL CANYON	-509	3501	3544	LIMESTONE, SANDSTONE	NATURAL GAS, OIL	N
283002	BRUSHY CANYON	-1737	4729	4799	OTHER : Sands/Carbonate	OIL	N
283003	BONE SPRING	-3336	6328	6434	OTHER : Sands/Carbonate	OIL	N
283016	WOLFCAMP	-6549	9541	9758	OTHER, SANDSTONE, SHALE : Carbonates	OIL	Y

Section 2 - Blowout Prevention

Pressure Rating (PSI): 5M

Rating Depth: 15152

Equipment: 13 5/8 5M Annular, pipe ram, and double ram will be installed and tested for each of the 12 1/4, 8 3/4 and 6 1/8 hole sections.

Requesting Variance? YES

Variance request: A variance is requested for the use of a flexible choke line from the BOP to Choke Manifold. See attached for specs and hydrostatic test chart.

Testing Procedure: - BOP/BOPE will be tested to 50% of the working pressure (5,000) by an independent service company to 250 psi low and the high pressure indicated above per Onshore Order 2 requirements. The System may be upgraded to a higher pressure but still tested to the working pressure listed in the table above. If the system is upgraded all the components installed will be functional and tested. - Pipe rams will be operationally checked each 24 hour period. Blind rams will be operationally checked on each trip out of the hole. These checks will be noted on the daily tour sheets. Other accessories to the BOP equipment will include a Kelly cock, full opening safety valve / inside BOP and choke lines and choke manifold. See attached schematics. - Formation integrity test will be performed per Onshore Order #2. On Exploratory wells or on that portion of any well approved for a 5M BOPE system or greater, a pressure integrity test of each casing shoe shall be performed. Will be tested in accordance with Onshore Oil and Gas Order #2 III.B.1.i. - A multibowl wellhead is being used. The BOP will be tested per Onshore Order #2 after installation on the surface casing which will cover testing requirements for

Operator Name: MARATHON OIL PERMIAN LLC**Well Name:** KYLE FEDERAL 24 28 34 WXY**Well Number:** 8H

a maximum of 30 days. If any seal subject to test pressure is broken the system must be tested. See attached schematic.

Choke Diagram Attachment:

DRILL_2_Contitech_Hose_SN_663393_20180806101451.pdf

DRILL_2_Choke_Line_Flex_III_Rig_20180806101431.pdf

DRILL_2_Choke_Line_Test_Chart_SN_63393_20180806101517.pdf

DRILL_2_5M_10M.TWO_CHOKE_MANIFOLD.BLM_1H_8H_20180809132326.pdf

BOP Diagram Attachment:

DRILL_2_KYLE_FEDERAL_24_28_34_7H_6H_1H_8H_Well_Control_Plan_20180806101907.pdf

DRILL_2_KYLE_FEDERAL_24_28_34_WH_TH_DESIGN_1B_5K_10K_7in_7H_8H_20180809094607.pdf

DRILL_2_10_5M_Flex.BOPE.BLM_1H_7H_20180809095049.pdf

Section 3 - Casing

Casing ID	String Type	Hole Size	Csg Size	Condition	Standard	Tapered String	Top Set MD	Bottom Set MD	Top Set TVD	Bottom Set TVD	Top Set MSL	Bottom Set MSL	Calculated casing length MD	Grade	Weight	Joint Type	Collapse SF	Burst SF	Joint SF Type	Joint SF	Body SF Type	Body SF
1	SURFACE	17.5	13.375	NEW	API	N	0	450	0	450	2992	2542	450	J-55	54.5	ST&C	5.52	2.5	BUOY	2.5	BUOY	2.5
2	INTERMEDIATE	12.25	9.625	NEW	API	N	0	2620	0	2598	2992	394	2620	J-55	40	LT&C	1.74	1.15	BUOY	2.19	BUOY	2.19
3	PRODUCTION	8.75	7.0	NEW	API	N	0	10100	0	9635	2992	-6643	10100	P-110	29	BUTT	2.21	1.18	BUOY	1.9	BUOY	1.9
4	LINER	6.125	4.5	NEW	API	N	9800	14459	9563	9635	-6571	-6643	4659	P-110	13.5	BUTT	1.33	1.56	BUOY	1.88	BUOY	1.88

Casing Attachments

Operator Name: MARATHON OIL PERMIAN LLC**Well Name:** KYLE FEDERAL 24 28 34 WXY**Well Number:** 8H**Casing Attachments**

Casing ID: 1 **String Type:** SURFACE**Inspection Document:****Spec Document:****Tapered String Spec:****Casing Design Assumptions and Worksheet(s):**Surface_20180809134842.pdf

Casing ID: 2 **String Type:** INTERMEDIATE**Inspection Document:****Spec Document:****Tapered String Spec:****Casing Design Assumptions and Worksheet(s):**Intermediate_20180809134926.pdf

Casing ID: 3 **String Type:** PRODUCTION**Inspection Document:****Spec Document:****Tapered String Spec:****Casing Design Assumptions and Worksheet(s):**Intermediate_II_20180809135014.pdf

Operator Name: MARATHON OIL PERMIAN LLC

Well Name: KYLE FEDERAL 24 28 34 WXY

Well Number: 8H

Casing Attachments

Casing ID: 4 String Type: LINER

Inspection Document:

Spec Document:

Tapered String Spec:

Casing Design Assumptions and Worksheet(s):

Liner_20180809135106.pdf

Section 4 - Cement

String Type	Lead/Tail	Stage Tool Depth	Top MD	Bottom MD	Quantity(sx)	Yield	Density	Cu Ft	Excess%	Cement type	Additives
SURFACE	Lead		0	0	0	0	0	0	0	no lead tail only	NA
SURFACE	Tail		0	450	458	1.33	14.8	625	100	Class C	0.02 Gal/Sk Defoamer + 0.5% Extender + 1% Accelerator
LINER	Lead		0	0	0	0	0	0	0	NO LEAD	0
LINER	Tail		9800	14459	468	1.22	14.5	570	30	CLASS H	0.1% retarder + 3.5% extender + 0.3% fluid loss + 0.1% Dispersant
INTERMEDIATE	Lead		0	1600	507	1.75	12.8	877	75	Class C	0.02 Gal/Sk Defoamer + 0.5% Extender + 1% Accelerator
INTERMEDIATE	Tail		1600	2620	360	1.33	14.8	479	50	Class C	0.3 % Retarder
PRODUCTION	Lead		2320	9100	642	2.7	11	1733	70	Class C	0.85% retarder + 10% extender + 0.02 gal/sk defoamer + 2.0% Extender + 0.15% Viscosifier
PRODUCTION	Tail		9100	10100	179	1.09	15.6	195	30	Class H	3% extender + 0.15% Dispersant + 0.03 gal/sk retarder

Operator Name: MARATHON OIL PERMIAN LLC**Well Name:** KYLE FEDERAL 24 28 34 WXY**Well Number:** 8H**Section 5 - Circulating Medium****Mud System Type:** Closed**Will an air or gas system be Used?** NO**Description of the equipment for the circulating system in accordance with Onshore Order #2:****Diagram of the equipment for the circulating system in accordance with Onshore Order #2:****Describe what will be on location to control well or mitigate other conditions:** The necessary mud products for additional weight and fluid loss control will be on location at all times.**Describe the mud monitoring system utilized:** Losses or gains in the mud system will be monitored visually/manually as well as with an electronic PVT.**Circulating Medium Table**

Top Depth	Bottom Depth	Mud Type	Min Weight (lbs/gal)	Max Weight (lbs/gal)	Density (lbs/cu ft)	Gel Strength (lbs/100 sqft)	PH	Viscosity (CP)	Salinity (ppm)	Filtration (cc)	Additional Characteristics
1010 0	1445 9	OIL-BASED MUD	11.5	12							
450	2620	SALT SATURATED	9.9	10.2							
0	450	WATER-BASED MUD	8.4	8.8							
2620	1010 0	OTHER : Cut Brine	8.8	9.8							

Section 6 - Test, Logging, Coring**List of production tests including testing procedures, equipment and safety measures:**

Open Hole Logs: GR while drilling from 9 5/8" Intermediate casing shoe to TD.

List of open and cased hole logs run in the well:

GR

Coring operation description for the well:

None Planned.

Operator Name: MARATHON OIL PERMIAN LLC**Well Name:** KYLE FEDERAL 24 28 34 WXY**Well Number:** 8H

Section 7 - Pressure

Anticipated Bottom Hole Pressure: 6012**Anticipated Surface Pressure:** 3892.3**Anticipated Bottom Hole Temperature(F):** 195**Anticipated abnormal pressures, temperatures, or potential geologic hazards?** NO**Describe:****Contingency Plans geohazards description:****Contingency Plans geohazards attachment:****Hydrogen Sulfide drilling operations plan required?** YES**Hydrogen sulfide drilling operations plan:**

DRILL_7_KYLE_FEDERAL_24_28_34_7H_6H_1H_8H_Pad_Flex_III_Rev1_20180806115536.pdf

DRILL_7_KYLE_FEDERAL_24_28_34_7H_6H_1H_8H_H2S_Contiengency_Plan_Summary_Rev1_20180806115525.pdf

DRILL_7_KYLE_FEDERAL_24_28_34_7H_6H_1H_8H_Contingency_Plan_071318_20180806110304.pdf

GCP_Kyle_Federal_24_28_34_1_6_7_8_20180808083133.docx

Section 8 - Other Information

Proposed horizontal/directional/multi-lateral plan submission:

DRILL_8_Marathon_KyleFedWXY_8H_PrelimPlanA_WPReport_20180809135426.pdf

DRILL_8_Marathon_KyleFedWXY_8H_PrelimPlanA_36x48WM_20180809135425.pdf

Other proposed operations facets description:

- Kelly cock will be in the drill string at all times.
- A full opening drill pipe stabbing valve having the appropriate connections will be on the rig floor unobstructed and readily accessible at all times.
- Hydrogen Sulfide detection equipment will be in operation after drilling out the surface casing shoe until the production casing is cemented. Breathing equipment will be on location upon drilling the surface casing shoe until total depth is reached. If Hydrogen Sulfide is encountered, measured amounts and formations will be reported to the BLM.

Potential Hazards:

- H2S detection equipment will be in operation after drilling out the surface casing shoe until the production casing has been cemented. Breathing equipment will be on location from drilling out the surface shoe until production casing is cemented. If H2S is encountered the operator will comply with Onshore Order #6.
- No abnormal temperatures or pressures are anticipated. All personnel will be familiar with all aspects of safe operation of equipment being used to drill this well. Adequate flare lines will be installed off the mud/gas separator where gas may be flared safely.
- No losses are anticipated at this time.
- All personnel will be familiar with all aspects of safe operation of equipment being used to drill this well.
- Adequate flare lines will be installed off the mud/gas separator where gas may be flared safely.

Other proposed operations facets attachment:

DRILL_8_Batch_Drilling_Plan_and_Surface_Rig_Request_20180628132936.pdf

DRILL_8_LEASE_MAP_20180806115722.jpg

DRILL_8_KYLE_FEDERAL_24_28_34_WXY_8H_DRILLING_PLAN_20180809135438.doc

Operator Name: MARATHON OIL PERMIAN LLC

Well Name: KYLE FEDERAL 24 28 34 WXY

Well Number: 8H

Other Variance attachment:

DRILL_8_Batch_Drilling_Plan_and_Surface_Rig_Request_20180627112019.pdf

CONFIDENTIAL



Professional Directional Planning Report



Marathon Oil

Database:	WellPlanner1	Local Co-ordinate Reference:	Site Kyle Federal 24-28-34 (1-6-7-8)
Company:	Marathon Oil	TVD Reference:	Well @ 3019.00usft (GL: 2992' + KB: 27' (PD582))
Project:	Eddy County, NM	MD Reference:	Well @ 3019.00usft (GL: 2992' + KB: 27' (PD582))
Site:	Kyle Federal 24-28-34 (1-6-7-8)	North Reference:	Grid
Well:	WXY #8H	Survey Calculation Method:	Minimum Curvature
Wellbore:	OH		
Design:	Prelim Plan A		

Project	Eddy County, NM		
Map System:	US State Plane 1927 (Exact solution)	System Datum:	Mean Sea Level
Geo Datum:	NAD 1927 (NADCON CONUS)		
Map Zone:	New Mexico East 3001		

Site	Kyle Federal 24-28-34 (1-6-7-8)				
Site Position:		Northing:	425,064.28 usft	Latitude:	32.168364
From:	Map	Easting:	578,570.85 usft	Longitude:	-104.079410
Position Uncertainty:	0.00 usft	Slot Radius:	13-3/16 "	Grid Convergence:	0.14

Well	WXY #8H					
Well Position	+N/-S	0.01 usft	Northing:	425,064.29 usft	Latitude:	32.168364
	+E/-W	30.03 usft	Easting:	578,600.88 usft	Longitude:	-104.079313
Position Uncertainty		0.00 usft	Wellhead Elevation:		Ground Level:	2,992.00 usft

Wellbore	OH				
Magnetics	Model Name	Sample Date	Declination (°)	Dip Angle (°)	Field Strength (nT)
	HDGM	7/12/2018	7.18	59.92	47,968.70

Design	Prelim Plan A				
Audit Notes:					
Version:		Phase:	PLAN	Tie On Depth:	0.00
Vertical Section:	Depth From (TVD) (usft)	+N/-S (usft)	+E/-W (usft)	Direction (°)	
	0.00	0.01	30.03	359.61	

Plan Survey Tool Program		Date 7/23/2018			
Depth From (usft)	Depth To (usft)	Survey (Wellbore)	Tool Name	Remarks	
1	0.00	1,850.00 Prelim Plan A (OH)	MWD+IFR1 OWSG MWD + IFR1		
2	1,850.00	5,400.00 Prelim Plan A (OH)	MWD+IFR1 OWSG MWD + IFR1		
3	5,400.00	10,000.00 Prelim Plan A (OH)	MWD+IFR1 OWSG MWD + IFR1		
4	10,000.00	14,458.76 Prelim Plan A (OH)	MWD+IFR1 OWSG MWD + IFR1		



Professional Directional Planning Report



Marathon Oil

Database:	WellPlanner1	Local Co-ordinate Reference:	Site Kyle Federal 24-28-34 (1-6-7-8)
Company:	Marathon Oil	TVD Reference:	Well @ 3019.00usft (GL: 2992' + KB: 27' (PD582))
Project:	Eddy County, NM	MD Reference:	Well @ 3019.00usft (GL: 2992' + KB: 27' (PD582))
Site:	Kyle Federal 24-28-34 (1-6-7-8)	North Reference:	Grid
Well:	WXY #8H	Survey Calculation Method:	Minimum Curvature
Wellbore:	OH		
Design:	Prelim Plan A		

Plan Sections										
Measured Depth (usft)	Inclination (°)	Azimuth (°)	Vertical Depth (usft)	+N/-S (usft)	+E/-W (usft)	Dogleg Rate (°/100usft)	Build Rate (°/100usft)	Turn Rate (°/100usft)	TFO (°)	Target
0.00	0.00	0.00	0.00	0.01	30.03	0.00	0.00	0.00	0.00	
1,200.00	0.00	0.00	1,200.00	0.01	30.03	0.00	0.00	0.00	0.00	
1,800.00	12.00	118.92	1,795.62	-30.26	84.83	2.00	2.00	0.00	118.92	
7,305.27	12.00	118.92	7,180.59	-583.72	1,086.73	0.00	0.00	0.00	0.00	
7,905.27	0.00	0.00	7,776.21	-613.99	1,141.53	2.00	-2.00	0.00	180.00	
9,191.06	0.00	0.00	9,062.00	-613.99	1,141.53	0.00	0.00	0.00	0.00	
10,091.05	90.00	359.61	9,634.96	-41.05	1,137.63	10.00	10.00	-0.04	359.61	
14,458.76	90.00	359.61	9,635.00	4,326.56	1,107.88	0.00	0.00	0.00	0.00	[KyleFedWXY#8H]LTI



Marathon Oil

Professional Directional Planning Report



Database:	WellPlanner1	Local Co-ordinate Reference:	Site Kyle Federal 24-28-34 (1-6-7-8)
Company:	Marathon Oil	TVD Reference:	Well @ 3019.00usft (GL: 2992' + KB: 27' (PD582))
Project:	Eddy County, NM	MD Reference:	Well @ 3019.00usft (GL: 2992' + KB: 27' (PD582))
Site:	Kyle Federal 24-28-34 (1-6-7-8)	North Reference:	Grid
Well:	WXY #8H	Survey Calculation Method:	Minimum Curvature
Wellbore:	OH		
Design:	Prelim Plan A		

Planned Survey									
Measured Depth (usft)	Inclination (°)	Azimuth (°)	Vertical Depth (usft)	+N/-S (usft)	+E/-W (usft)	Vertical Section (usft)	Dogleg Rate (°/100usft)	Build Rate (°/100usft)	Turn Rate (°/100usft)
0.00	0.00	0.00	0.00	0.01	30.03	0.00	0.00	0.00	0.00
[KyleFedWXY#8H]FTP									
100.00	0.00	0.00	100.00	0.01	30.03	0.00	0.00	0.00	0.00
200.00	0.00	0.00	200.00	0.01	30.03	0.00	0.00	0.00	0.00
300.00	0.00	0.00	300.00	0.01	30.03	0.00	0.00	0.00	0.00
400.00	0.00	0.00	400.00	0.01	30.03	0.00	0.00	0.00	0.00
500.00	0.00	0.00	500.00	0.01	30.03	0.00	0.00	0.00	0.00
600.00	0.00	0.00	600.00	0.01	30.03	0.00	0.00	0.00	0.00
700.00	0.00	0.00	700.00	0.01	30.03	0.00	0.00	0.00	0.00
800.00	0.00	0.00	800.00	0.01	30.03	0.00	0.00	0.00	0.00
900.00	0.00	0.00	900.00	0.01	30.03	0.00	0.00	0.00	0.00
1,000.00	0.00	0.00	1,000.00	0.01	30.03	0.00	0.00	0.00	0.00
1,100.00	0.00	0.00	1,100.00	0.01	30.03	0.00	0.00	0.00	0.00
1,200.00	0.00	0.00	1,200.00	0.01	30.03	0.00	0.00	0.00	0.00
1,300.00	2.00	118.92	1,299.98	-0.83	31.56	-0.85	2.00	2.00	0.00
1,400.00	4.00	118.92	1,399.84	-3.36	36.14	-3.42	2.00	2.00	0.00
1,500.00	6.00	118.92	1,499.45	-7.58	43.77	-7.68	2.00	2.00	0.00
1,600.00	8.00	118.92	1,598.70	-13.47	54.43	-13.65	2.00	2.00	0.00
1,700.00	10.00	118.92	1,697.47	-21.03	68.13	-21.30	2.00	2.00	0.00
1,800.00	12.00	118.92	1,795.62	-30.26	84.83	-30.64	2.00	2.00	0.00
1,900.00	12.00	118.92	1,893.44	-40.31	103.03	-40.82	0.00	0.00	0.00
2,000.00	12.00	118.92	1,991.25	-50.37	121.23	-51.00	0.00	0.00	0.00
2,100.00	12.00	118.92	2,089.07	-60.42	139.42	-61.17	0.00	0.00	0.00
2,200.00	12.00	118.92	2,186.88	-70.47	157.62	-71.35	0.00	0.00	0.00
2,300.00	12.00	118.92	2,284.70	-80.53	175.82	-81.53	0.00	0.00	0.00
2,400.00	12.00	118.92	2,382.51	-90.58	194.02	-91.70	0.00	0.00	0.00
2,500.00	12.00	118.92	2,480.33	-100.63	212.22	-101.88	0.00	0.00	0.00
2,600.00	12.00	118.92	2,578.14	-110.69	230.42	-112.06	0.00	0.00	0.00
2,700.00	12.00	118.92	2,675.96	-120.74	248.62	-122.23	0.00	0.00	0.00
2,800.00	12.00	118.92	2,773.77	-130.79	266.82	-132.41	0.00	0.00	0.00
2,900.00	12.00	118.92	2,871.59	-140.85	285.02	-142.59	0.00	0.00	0.00
3,000.00	12.00	118.92	2,969.40	-150.90	303.22	-152.77	0.00	0.00	0.00
3,100.00	12.00	118.92	3,067.22	-160.95	321.41	-162.94	0.00	0.00	0.00
3,200.00	12.00	118.92	3,165.03	-171.01	339.61	-173.12	0.00	0.00	0.00
3,300.00	12.00	118.92	3,262.84	-181.06	357.81	-183.30	0.00	0.00	0.00
3,400.00	12.00	118.92	3,360.66	-191.11	376.01	-193.47	0.00	0.00	0.00
3,500.00	12.00	118.92	3,458.47	-201.17	394.21	-203.65	0.00	0.00	0.00
3,600.00	12.00	118.92	3,556.29	-211.22	412.41	-213.83	0.00	0.00	0.00
3,700.00	12.00	118.92	3,654.10	-221.27	430.61	-224.00	0.00	0.00	0.00
3,800.00	12.00	118.92	3,751.92	-231.33	448.81	-234.18	0.00	0.00	0.00
3,900.00	12.00	118.92	3,849.73	-241.38	467.01	-244.36	0.00	0.00	0.00
4,000.00	12.00	118.92	3,947.55	-251.43	485.21	-254.53	0.00	0.00	0.00
4,100.00	12.00	118.92	4,045.36	-261.49	503.41	-264.71	0.00	0.00	0.00
4,200.00	12.00	118.92	4,143.18	-271.54	521.60	-274.89	0.00	0.00	0.00
4,300.00	12.00	118.92	4,240.99	-281.59	539.80	-285.07	0.00	0.00	0.00
4,400.00	12.00	118.92	4,338.81	-291.65	558.00	-295.24	0.00	0.00	0.00
4,500.00	12.00	118.92	4,436.62	-301.70	576.20	-305.42	0.00	0.00	0.00
4,600.00	12.00	118.92	4,534.44	-311.75	594.40	-315.60	0.00	0.00	0.00
4,700.00	12.00	118.92	4,632.25	-321.81	612.60	-325.77	0.00	0.00	0.00
4,800.00	12.00	118.92	4,730.07	-331.86	630.80	-335.95	0.00	0.00	0.00
4,900.00	12.00	118.92	4,827.88	-341.91	649.00	-346.13	0.00	0.00	0.00
5,000.00	12.00	118.92	4,925.70	-351.96	667.20	-356.30	0.00	0.00	0.00



Marathon Oil

Professional Directional Planning Report



Database:	WellPlanner1	Local Co-ordinate Reference:	Site Kyle Federal 24-28-34 (1-6-7-8)
Company:	Marathon Oil	TVD Reference:	Well @ 3019.00usft (GL: 2992' + KB: 27' (PD582))
Project:	Eddy County, NM	MD Reference:	Well @ 3019.00usft (GL: 2992' + KB: 27' (PD582))
Site:	Kyle Federal 24-28-34 (1-6-7-8)	North Reference:	Grid
Well:	WXY #8H	Survey Calculation Method:	Minimum Curvature
Wellbore:	OH		
Design:	Prelim Plan A		

Planned Survey										
Measured Depth (usft)	Inclination (°)	Azimuth (°)	Vertical Depth (usft)	+N/-S (usft)	+E/-W (usft)	Vertical Section (usft)	Dogleg Rate (°/100usft)	Build Rate (°/100usft)	Turn Rate (°/100usft)	
5,100.00	12.00	118.92	5,023.51	-362.02	685.40	-366.48	0.00	0.00	0.00	
5,200.00	12.00	118.92	5,121.33	-372.07	703.59	-376.66	0.00	0.00	0.00	
5,300.00	12.00	118.92	5,219.14	-382.12	721.79	-386.83	0.00	0.00	0.00	
5,400.00	12.00	118.92	5,316.95	-392.18	739.99	-397.01	0.00	0.00	0.00	
5,500.00	12.00	118.92	5,414.77	-402.23	758.19	-407.19	0.00	0.00	0.00	
5,600.00	12.00	118.92	5,512.58	-412.28	776.39	-417.37	0.00	0.00	0.00	
5,700.00	12.00	118.92	5,610.40	-422.34	794.59	-427.54	0.00	0.00	0.00	
5,800.00	12.00	118.92	5,708.21	-432.39	812.79	-437.72	0.00	0.00	0.00	
5,900.00	12.00	118.92	5,806.03	-442.44	830.99	-447.90	0.00	0.00	0.00	
6,000.00	12.00	118.92	5,903.84	-452.50	849.19	-458.07	0.00	0.00	0.00	
6,100.00	12.00	118.92	6,001.66	-462.55	867.39	-468.25	0.00	0.00	0.00	
6,200.00	12.00	118.92	6,099.47	-472.60	885.58	-478.43	0.00	0.00	0.00	
6,300.00	12.00	118.92	6,197.29	-482.66	903.78	-488.60	0.00	0.00	0.00	
6,400.00	12.00	118.92	6,295.10	-492.71	921.98	-498.78	0.00	0.00	0.00	
6,500.00	12.00	118.92	6,392.92	-502.76	940.18	-508.96	0.00	0.00	0.00	
6,600.00	12.00	118.92	6,490.73	-512.82	958.38	-519.13	0.00	0.00	0.00	
6,700.00	12.00	118.92	6,588.55	-522.87	976.58	-529.31	0.00	0.00	0.00	
6,800.00	12.00	118.92	6,686.36	-532.92	994.78	-539.49	0.00	0.00	0.00	
6,900.00	12.00	118.92	6,784.18	-542.98	1,012.98	-549.67	0.00	0.00	0.00	
7,000.00	12.00	118.92	6,881.99	-553.03	1,031.18	-559.84	0.00	0.00	0.00	
7,100.00	12.00	118.92	6,979.81	-563.08	1,049.38	-570.02	0.00	0.00	0.00	
7,200.00	12.00	118.92	7,077.62	-573.14	1,067.58	-580.20	0.00	0.00	0.00	
7,305.27	12.00	118.92	7,180.59	-583.72	1,086.73	-590.91	0.00	0.00	0.00	
7,400.00	10.11	118.92	7,273.56	-592.50	1,102.63	-599.80	2.00	-2.00	0.00	
7,500.00	8.11	118.92	7,372.29	-600.15	1,116.48	-607.54	2.00	-2.00	0.00	
7,600.00	6.11	118.92	7,471.52	-606.13	1,127.31	-613.60	2.00	-2.00	0.00	
7,700.00	4.11	118.92	7,571.12	-610.44	1,135.10	-617.95	2.00	-2.00	0.00	
7,800.00	2.11	118.92	7,670.97	-613.05	1,139.84	-620.60	2.00	-2.00	0.00	
7,905.27	0.00	0.00	7,776.21	-613.99	1,141.53	-621.55	2.00	-2.00	0.00	
8,000.00	0.00	0.00	7,870.94	-613.99	1,141.53	-621.55	0.00	0.00	0.00	
8,100.00	0.00	0.00	7,970.94	-613.99	1,141.53	-621.55	0.00	0.00	0.00	
8,200.00	0.00	0.00	8,070.94	-613.99	1,141.53	-621.55	0.00	0.00	0.00	
8,300.00	0.00	0.00	8,170.94	-613.99	1,141.53	-621.55	0.00	0.00	0.00	
8,400.00	0.00	0.00	8,270.94	-613.99	1,141.53	-621.55	0.00	0.00	0.00	
8,500.00	0.00	0.00	8,370.94	-613.99	1,141.53	-621.55	0.00	0.00	0.00	
8,600.00	0.00	0.00	8,470.94	-613.99	1,141.53	-621.55	0.00	0.00	0.00	
8,700.00	0.00	0.00	8,570.94	-613.99	1,141.53	-621.55	0.00	0.00	0.00	
8,800.00	0.00	0.00	8,670.94	-613.99	1,141.53	-621.55	0.00	0.00	0.00	
8,900.00	0.00	0.00	8,770.94	-613.99	1,141.53	-621.55	0.00	0.00	0.00	
9,000.00	0.00	0.00	8,870.94	-613.99	1,141.53	-621.55	0.00	0.00	0.00	
9,100.00	0.00	0.00	8,970.94	-613.99	1,141.53	-621.55	0.00	0.00	0.00	
9,191.06	0.00	0.00	9,062.00	-613.99	1,141.53	-621.55	0.00	0.00	0.00	
9,200.00	0.89	359.61	9,070.94	-613.92	1,141.53	-621.48	10.00	10.00	0.00	
9,250.00	5.89	359.61	9,120.84	-610.96	1,141.51	-618.52	10.00	10.00	0.00	
9,300.00	10.89	359.61	9,170.29	-603.66	1,141.46	-611.23	10.00	10.00	0.00	
9,350.00	15.89	359.61	9,218.91	-592.09	1,141.38	-599.65	10.00	10.00	0.00	
9,400.00	20.89	359.61	9,266.34	-576.31	1,141.27	-583.87	10.00	10.00	0.00	
9,450.00	25.89	359.61	9,312.22	-556.47	1,141.14	-564.03	10.00	10.00	0.00	
9,500.00	30.89	359.61	9,356.19	-532.70	1,140.98	-540.26	10.00	10.00	0.00	
9,550.00	35.89	359.61	9,397.92	-505.19	1,140.79	-512.75	10.00	10.00	0.00	
9,600.00	40.89	359.61	9,437.10	-474.14	1,140.58	-481.70	10.00	10.00	0.00	
9,650.00	45.89	359.61	9,473.42	-439.81	1,140.34	-447.36	10.00	10.00	0.00	



Marathon Oil

Professional Directional Planning Report


PRO DIRECTIONAL

Database:	WellPlanner1	Local Co-ordinate Reference:	Site Kyle Federal 24-28-34 (1-6-7-8)
Company:	Marathon Oil	TVD Reference:	Well @ 3019.00usft (GL: 2992' + KB: 27' (PD582))
Project:	Eddy County, NM	MD Reference:	Well @ 3019.00usft (GL: 2992' + KB: 27' (PD582))
Site:	Kyle Federal 24-28-34 (1-6-7-8)	North Reference:	Grid
Well:	WXY #8H	Survey Calculation Method:	Minimum Curvature
Wellbore:	OH		
Design:	Prelim Plan A		

Planned Survey										
Measured Depth (usft)	Inclination (°)	Azimuth (°)	Vertical Depth (usft)	+N/-S (usft)	+E/-W (usft)	Vertical Section (usft)	Dogleg Rate (°/100usft)	Build Rate (°/100usft)	Turn Rate (°/100usft)	
9,700.00	50.89	359.61	9,506.61	-402.43	1,140.09	-409.99	10.00	10.00	0.00	
9,750.00	55.89	359.61	9,536.41	-362.31	1,139.82	-369.86	10.00	10.00	0.00	
9,800.00	60.89	359.61	9,562.61	-319.74	1,139.53	-327.29	10.00	10.00	0.00	
9,850.00	65.89	359.61	9,584.99	-275.05	1,139.22	-282.60	10.00	10.00	0.00	
9,900.00	70.89	359.61	9,603.40	-228.58	1,138.90	-236.13	10.00	10.00	0.00	
9,950.00	75.89	359.61	9,617.68	-180.68	1,138.58	-188.23	10.00	10.00	0.00	
10,000.00	80.89	359.61	9,627.74	-131.72	1,138.25	-139.27	10.00	10.00	0.00	
10,050.00	85.89	359.61	9,633.49	-82.07	1,137.91	-89.62	10.00	10.00	0.00	
10,091.05	90.00	359.61	9,634.96	-41.05	1,137.63	-48.60	10.00	10.00	0.00	
10,100.00	90.00	359.61	9,634.96	-32.10	1,137.57	-39.65	0.00	0.00	0.00	
10,200.00	90.00	359.61	9,634.96	67.89	1,136.89	60.35	0.00	0.00	0.00	
10,300.00	90.00	359.61	9,634.96	167.89	1,136.20	160.35	0.00	0.00	0.00	
10,400.00	90.00	359.61	9,634.96	267.89	1,135.52	260.35	0.00	0.00	0.00	
10,500.00	90.00	359.61	9,634.96	367.89	1,134.84	360.35	0.00	0.00	0.00	
10,600.00	90.00	359.61	9,634.96	467.89	1,134.16	460.35	0.00	0.00	0.00	
10,700.00	90.00	359.61	9,634.96	567.88	1,133.48	560.35	0.00	0.00	0.00	
10,800.00	90.00	359.61	9,634.96	667.88	1,132.80	660.35	0.00	0.00	0.00	
10,900.00	90.00	359.61	9,634.97	767.88	1,132.12	760.35	0.00	0.00	0.00	
11,000.00	90.00	359.61	9,634.97	867.88	1,131.44	860.35	0.00	0.00	0.00	
11,100.00	90.00	359.61	9,634.97	967.87	1,130.76	960.35	0.00	0.00	0.00	
11,200.00	90.00	359.61	9,634.97	1,067.87	1,130.07	1,060.35	0.00	0.00	0.00	
11,300.00	90.00	359.61	9,634.97	1,167.87	1,129.39	1,160.35	0.00	0.00	0.00	
11,400.00	90.00	359.61	9,634.97	1,267.87	1,128.71	1,260.35	0.00	0.00	0.00	
11,500.00	90.00	359.61	9,634.97	1,367.86	1,128.03	1,360.35	0.00	0.00	0.00	
11,600.00	90.00	359.61	9,634.97	1,467.86	1,127.35	1,460.35	0.00	0.00	0.00	
11,700.00	90.00	359.61	9,634.97	1,567.86	1,126.67	1,560.35	0.00	0.00	0.00	
11,800.00	90.00	359.61	9,634.97	1,667.86	1,125.99	1,660.35	0.00	0.00	0.00	
11,900.00	90.00	359.61	9,634.98	1,767.86	1,125.31	1,760.35	0.00	0.00	0.00	
12,000.00	90.00	359.61	9,634.98	1,867.85	1,124.63	1,860.35	0.00	0.00	0.00	
12,100.00	90.00	359.61	9,634.98	1,967.85	1,123.95	1,960.35	0.00	0.00	0.00	
12,200.00	90.00	359.61	9,634.98	2,067.85	1,123.26	2,060.35	0.00	0.00	0.00	
12,300.00	90.00	359.61	9,634.98	2,167.85	1,122.58	2,160.35	0.00	0.00	0.00	
12,400.00	90.00	359.61	9,634.98	2,267.84	1,121.90	2,260.35	0.00	0.00	0.00	
12,500.00	90.00	359.61	9,634.98	2,367.84	1,121.22	2,360.35	0.00	0.00	0.00	
12,600.00	90.00	359.61	9,634.98	2,467.84	1,120.54	2,460.35	0.00	0.00	0.00	
12,700.00	90.00	359.61	9,634.98	2,567.84	1,119.86	2,560.35	0.00	0.00	0.00	
12,800.00	90.00	359.61	9,634.98	2,667.83	1,119.18	2,660.35	0.00	0.00	0.00	
12,900.00	90.00	359.61	9,634.99	2,767.83	1,118.50	2,760.35	0.00	0.00	0.00	
13,000.00	90.00	359.61	9,634.99	2,867.83	1,117.82	2,860.35	0.00	0.00	0.00	
13,100.00	90.00	359.61	9,634.99	2,967.83	1,117.13	2,960.35	0.00	0.00	0.00	
13,200.00	90.00	359.61	9,634.99	3,067.83	1,116.45	3,060.35	0.00	0.00	0.00	
13,300.00	90.00	359.61	9,634.99	3,167.82	1,115.77	3,160.35	0.00	0.00	0.00	
13,400.00	90.00	359.61	9,634.99	3,267.82	1,115.09	3,260.35	0.00	0.00	0.00	
13,500.00	90.00	359.61	9,634.99	3,367.82	1,114.41	3,360.35	0.00	0.00	0.00	
13,600.00	90.00	359.61	9,634.99	3,467.82	1,113.73	3,460.35	0.00	0.00	0.00	
13,700.00	90.00	359.61	9,634.99	3,567.81	1,113.05	3,560.35	0.00	0.00	0.00	
13,800.00	90.00	359.61	9,634.99	3,667.81	1,112.37	3,660.35	0.00	0.00	0.00	
13,900.00	90.00	359.61	9,634.99	3,767.81	1,111.69	3,760.35	0.00	0.00	0.00	
14,000.00	90.00	359.61	9,635.00	3,867.81	1,111.00	3,860.35	0.00	0.00	0.00	
14,100.00	90.00	359.61	9,635.00	3,967.80	1,110.32	3,960.35	0.00	0.00	0.00	
14,200.00	90.00	359.61	9,635.00	4,067.80	1,109.64	4,060.35	0.00	0.00	0.00	
14,300.00	90.00	359.61	9,635.00	4,167.80	1,108.96	4,160.35	0.00	0.00	0.00	



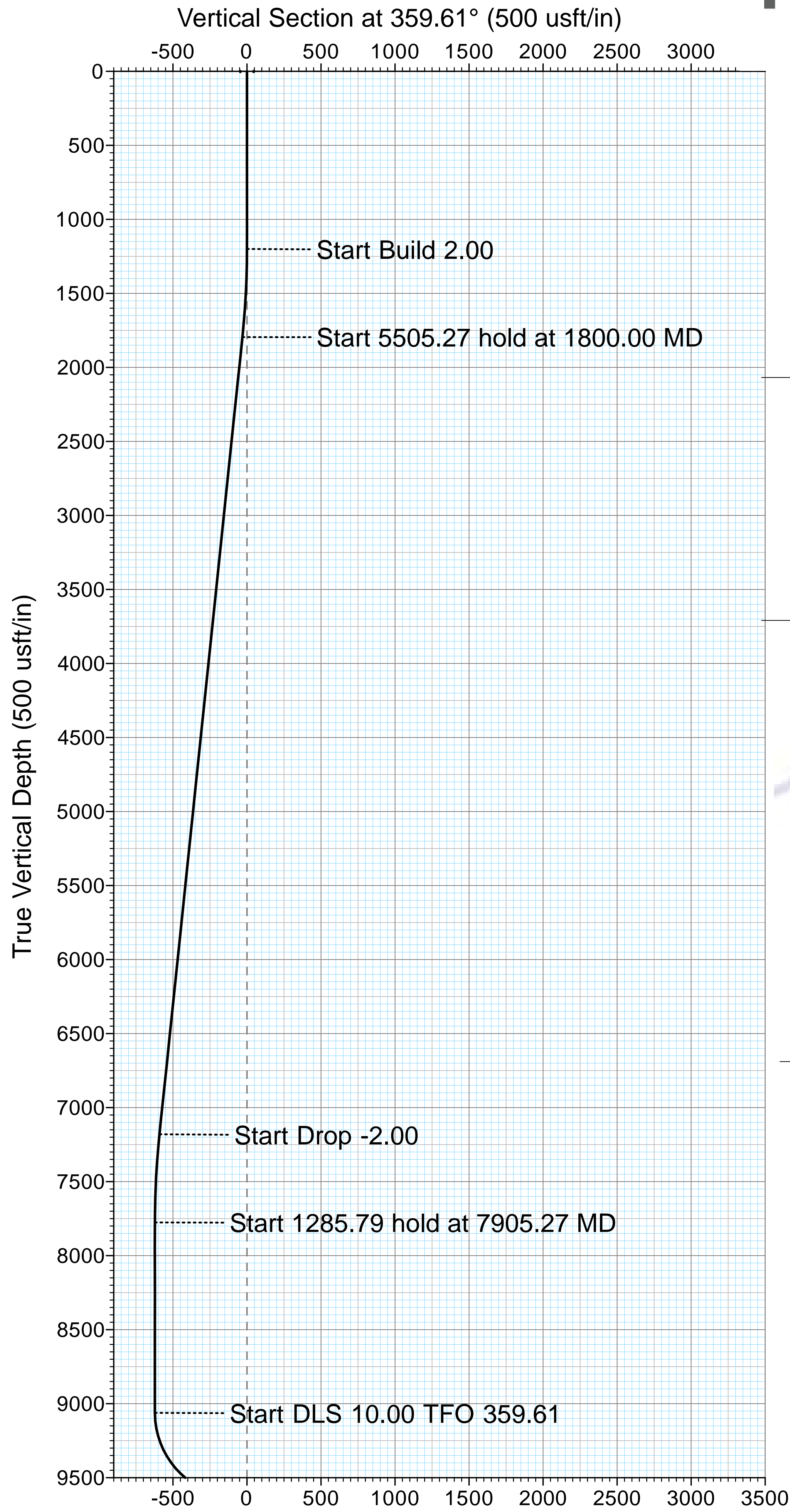
Professional Directional Planning Report



Marathon Oil

Database:	WellPlanner1	Local Co-ordinate Reference:	Site Kyle Federal 24-28-34 (1-6-7-8)
Company:	Marathon Oil	TVD Reference:	Well @ 3019.00usft (GL: 2992' + KB: 27' (PD582))
Project:	Eddy County, NM	MD Reference:	Well @ 3019.00usft (GL: 2992' + KB: 27' (PD582))
Site:	Kyle Federal 24-28-34 (1-6-7-8)	North Reference:	Grid
Well:	WXY #8H	Survey Calculation Method:	Minimum Curvature
Wellbore:	OH		
Design:	Prelim Plan A		

Planned Survey									
Measured Depth (usft)	Inclination (°)	Azimuth (°)	Vertical Depth (usft)	+N/-S (usft)	+E/-W (usft)	Vertical Section (usft)	Dogleg Rate (°/100usft)	Build Rate (°/100usft)	Turn Rate (°/100usft)
14,400.00	90.00	359.61	9,635.00	4,267.80	1,108.28	4,260.35	0.00	0.00	0.00
14,458.76	90.00	359.61	9,635.00	4,326.56	1,107.88	4,319.11	0.00	0.00	0.00
[KyleFedWXY#8H]LTP/BHL									



US State Plane 1927 (Exact solution)
NAD 1927 (NADCON CONUS)
Clarke 1866
New Mexico East 3001
Mean Sea Level

RKB Elevation: Well @ 3019.00usft (GL: 2992' + KB: 27' (PD582))

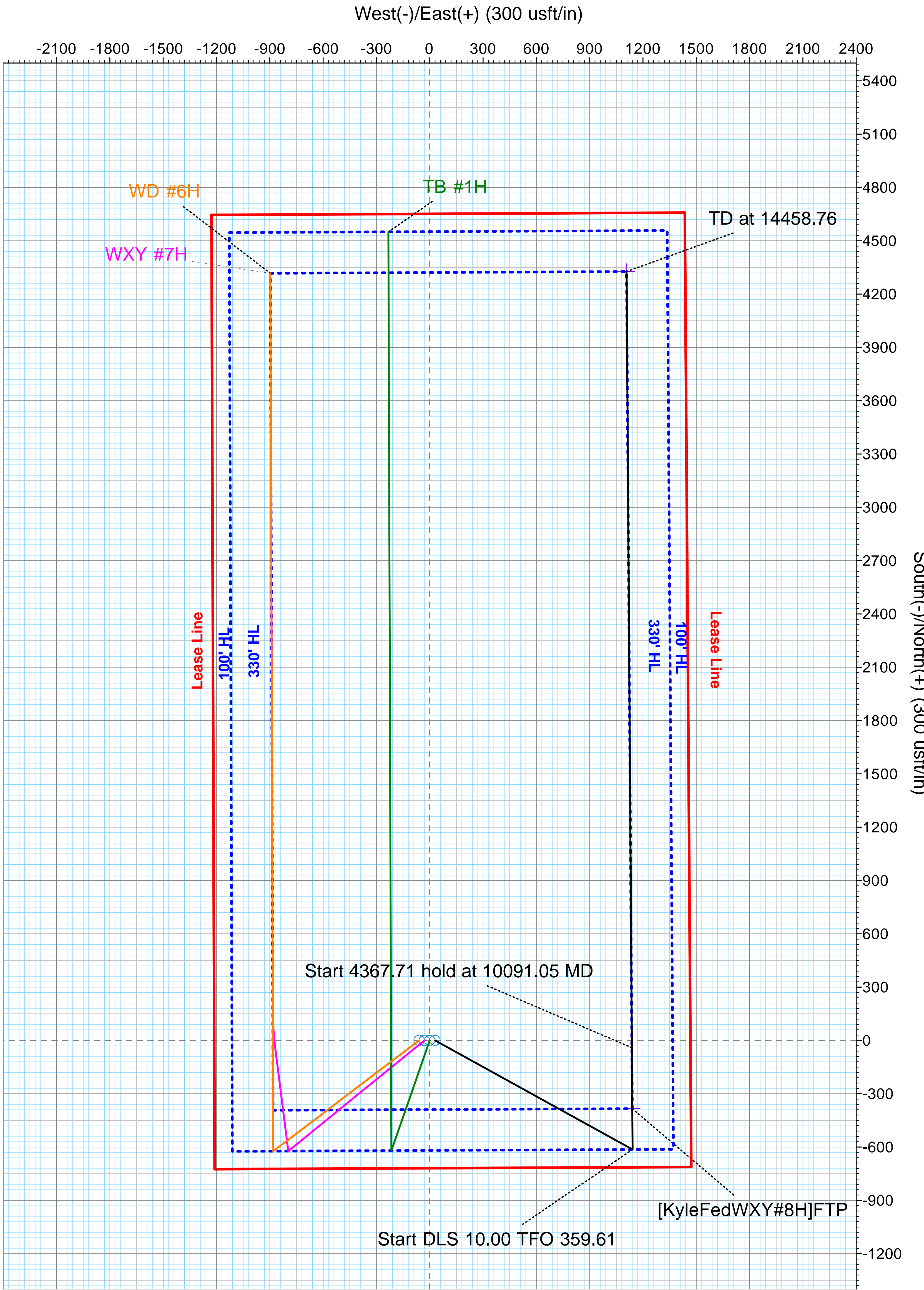
+N/-S	+E/-W	Northing	Easting	Latitude	Longitude	Slot
0.01	30.03	425064.29	578600.88	32.168364	-104.079313	

SECTION DETAILS

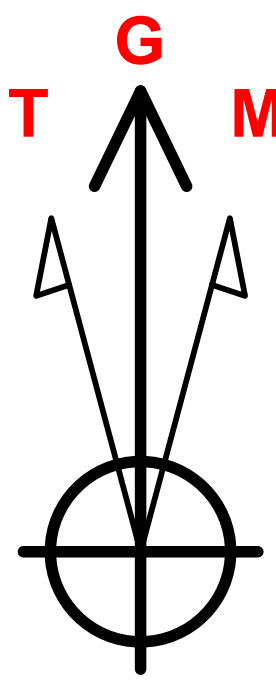
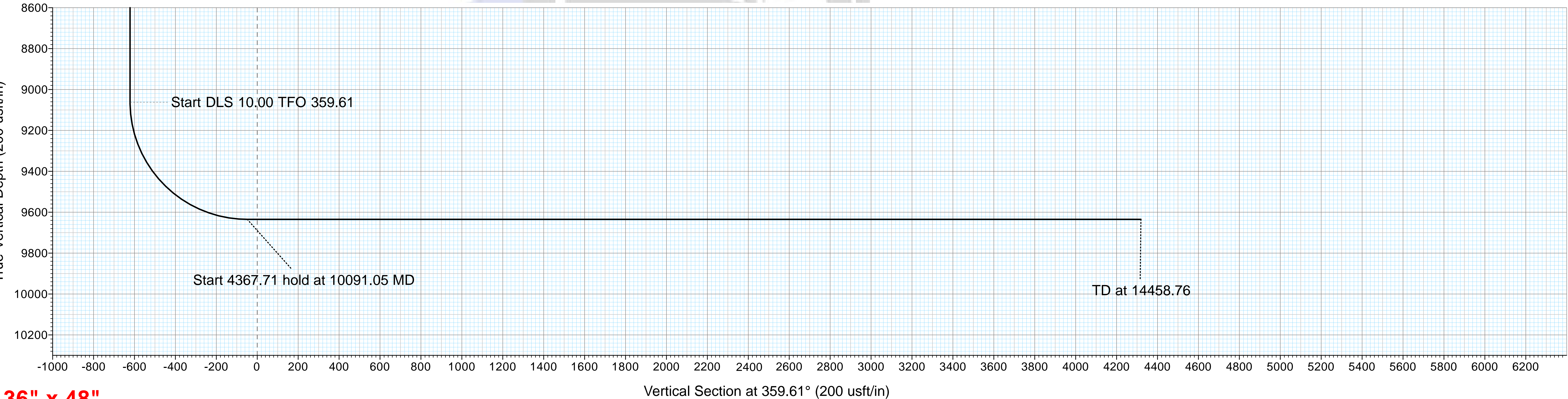
Sec	MD	Inc	Azi	TVD	+N/-S	+E/-W	Dleg	VSect
1	0.00	0.00	0.00	0.00	0.01	30.03	0.00	0.00
2	1200.00	0.00	0.00	1200.00	0.01	30.03	0.00	0.00
3	1800.00	12.00	118.92	1795.62	-30.26	84.83	2.00	-30.64
4	7305.27	12.00	118.92	7180.59	-583.72	1086.73	0.00	-590.91
5	7905.27	0.00	0.00	7776.21	-613.99	1141.53	2.00	-621.55
6	9191.06	0.00	0.00	9062.00	-613.99	1141.53	0.00	-621.55
7	10091.05	90.00	359.61	9634.96	-41.05	1137.63	10.00	-48.60
8	14458.76	90.00	359.61	9635.00	4326.56	1107.88	0.00	4319.11

WELLBORE TARGET DETAILS (MAP CO-ORDINATES)

Name	TVD	+N/-S	+E/-W	Northing	Easting
[KyleFedWXY#8H]FTP	0.00	-384.06	1139.86	424680.22	579710.71
[KyleFedWXY#8H]LTP/BHL	9635.00	4326.56	1107.88	429390.84	579678.73



Target Line: 9635' TVD @ 0' VS: 90° INC



Azimuths to Grid North
True North: -0.14°
Magnetic North: 7.05°

Magnetic Field
Strength: 47968.7snT
Dip Angle: 59.92°
Date: 7/12/2018
Model: HDGM

Azimuth Corrections
Total Magnetic Corr. (M to G): 7.05°
Declination (M to T): 7.18° East

PECOS DISTRICT DRILLING CONDITIONS OF APPROVAL

OPERATOR'S NAME:	MARATHON OIL PERMIAN LLC
LEASE NO.:	NMNM013074
WELL NAME & NO.:	KYLE FEDERAL 24 28 34 WXY 8H
SURFACE HOLE FOOTAGE:	719'/S & 1242'/W
BOTTOM HOLE FOOTAGE:	330'/N & 2335'/W
LOCATION:	Section 34, T.24 S., R.28 E., NMPM
COUNTY:	Eddy County, New Mexico

COA

H2S	<input type="radio"/> Yes	<input checked="" type="radio"/> No	
Potash	<input checked="" type="radio"/> None	<input type="radio"/> Secretary	<input type="radio"/> R-111-P
Cave/Karst Potential	<input type="radio"/> Low	<input type="radio"/> Medium	<input checked="" type="radio"/> High
Cave/Karst Potential	<input type="radio"/> Critical		
Variance	<input type="radio"/> None	<input checked="" type="radio"/> Flex Hose	<input type="radio"/> Other
Wellhead	<input type="radio"/> Conventional	<input checked="" type="radio"/> Multibowl	<input type="radio"/> Both
Other	<input type="checkbox"/> 4 String Area	<input type="checkbox"/> Capitan Reef	<input type="checkbox"/> WIPP
Other	<input type="checkbox"/> Fluid Filled	<input type="checkbox"/> Cement Squeeze	<input type="checkbox"/> Pilot Hole
Special Requirements	<input type="checkbox"/> Water Disposal	<input type="checkbox"/> COM	<input type="checkbox"/> Unit

A. HYDROGEN SULFIDE

Hydrogen Sulfide (H2S) monitors shall be installed prior to drilling out the surface shoe. If H2S is detected in concentrations greater than 100 ppm, the Hydrogen Sulfide area shall meet Onshore Order 6 requirements, which includes equipment and personnel/public protection items. If Hydrogen Sulfide is encountered, provide measured values and formations to the BLM.

B. CASING

1. The **13-3/8** inch surface casing shall be set at approximately **450 feet** (a minimum of 70 feet (Eddy County) into the Rustler Anhydrite and above the salt) and cemented to the surface.
 - a. If cement does not circulate to the surface, the appropriate BLM office shall be notified and a temperature survey utilizing an electronic type temperature survey with surface log readout will be used or a cement bond log shall be run to verify the top of the cement. Temperature survey will be run a minimum of six hours after pumping cement and ideally between 8-10 hours after completing the cement job.
 - b. Wait on cement (WOC) time for a primary cement job will be a minimum of **8**

- hours** or 500 pounds compressive strength, whichever is greater. (This is to include the lead cement)
- c. Wait on cement (WOC) time for a remedial job will be a minimum of 4 hours after bringing cement to surface or 500 pounds compressive strength, whichever is greater.
 - d. If cement falls back, remedial cementing will be done prior to drilling out that string.
2. The **9-5/8** Intermediate casing shall be set at approximately **2620 feet**. The minimum required fill of cement behind the **9-5/8** inch intermediate casing is:

Option 1 (Single Stage):

- Cement to surface. If cement does not circulate see B.1.a, c-d above.
Wait on cement (WOC) time for a primary cement job is to include the lead cement slurry due to cave/karst or potash.
 - ❖ In High Cave/Karst Areas if cement does not circulate to surface on the first two casing strings, the cement on the 3rd casing string must come to surface.
3. The minimum required fill of cement behind the **7** inch second intermediate casing is:

Option 1 (Single Stage):

- Cement should tie-back at least **200 feet** into previous casing string. Operator shall provide method of verification.
4. The minimum required fill of cement behind the **4-1/2** inch production liner is:
- Cement should tie-back **100 feet** into the previous casing. Operator shall provide method of verification.

C. PRESSURE CONTROL

1. Variance approved to use flex line from BOP to choke manifold. Manufacturer's specification to be readily available. No external damage to flex line. Flex line to be installed as straight as possible (no hard bends).
2. **BOP REQUIREMENTS**

Option 1:

- a. Minimum working pressure of the blowout preventer (BOP) and related equipment (BOPE) required for drilling below the surface casing shoe shall be **2000 (2M)** psi.

- b. Minimum working pressure of the blowout preventer (BOP) and related equipment (BOPE) required for drilling below the intermediate casing shoe shall be **5000 (5M) psi**.

Option 2:

Operator has proposed a multi-bowl wellhead assembly. This assembly will only be tested when installed on the surface casing. Minimum working pressure of the blowout preventer (BOP) and related equipment (BOPE) required for drilling below the surface casing shoe shall be **10,000 (10M) psi**. **Variance is approved to use a 5000 (5M) Annular which shall be tested to 5000 (5M) psi.**

- a. Wellhead shall be installed by manufacturer's representatives, submit documentation with subsequent sundry.
- b. If the welding is performed by a third party, the manufacturer's representative shall monitor the temperature to verify that it does not exceed the maximum temperature of the seal.
- c. Manufacturer representative shall install the test plug for the initial BOP test.
- d. If the cement does not circulate and one inch operations would have been possible with a standard wellhead, the well head shall be cut off, cementing operations performed and another wellhead installed.
- e. Whenever any seal subject to test pressure is broken, all the tests in OOGO2.III.A.2.i must be followed.

GENERAL REQUIREMENTS

The BLM is to be notified in advance for a representative to witness:

- a. Spudding well (minimum of 24 hours)
- b. Setting and/or Cementing of all casing strings (minimum of 4 hours)
- c. BOPE tests (minimum of 4 hours)

☒ Eddy County

Call the Carlsbad Field Office, 620 East Greene St., Carlsbad, NM 88220,
(575) 361-2822

☒ Lea County

Call the Hobbs Field Station, 414 West Taylor, Hobbs NM 88240, (575)
393-3612

1. Unless the production casing has been run and cemented or the well has been properly plugged, the drilling rig shall not be removed from over the hole without prior approval.
 - a. In the event the operator has proposed to drill multiple wells utilizing a skid/walking rig. Operator shall secure the wellbore on the current well, after installing and testing the wellhead, by installing a blind flange of like pressure rating to the wellhead and a pressure gauge that can be monitored while drilling is performed on the other well(s).
 - b. When the operator proposes to set surface casing with Spudder Rig
 - Notify the BLM when moving in and removing the Spudder Rig.
 - Notify the BLM when moving in the 2nd Rig. Rig to be moved in within 90 days of notification that Spudder Rig has left the location.
 - BOP/BOPE test to be conducted per Onshore Oil and Gas Order No. 2 as soon as 2nd Rig is rigged up on well.
2. Floor controls are required for 3M or Greater systems. These controls will be on the rig floor, unobstructed, readily accessible to the driller and will be operational at all times during drilling and/or completion activities. Rig floor is defined as the area immediately around the rotary table; the area immediately above the substructure on which the draw works are located, this does not include the dog house or stairway area.
3. The record of the drilling rate along with the GR/N well log run from TD to surface (horizontal well – vertical portion of hole) shall be submitted to the BLM office as well as all other logs run on the borehole 30 days from completion. If available, a digital copy of the logs is to be submitted in addition to the paper copies. The Rustler top and top and bottom of Salt are to be recorded on the Completion Report.

A. CASING

1. Changes to the approved APD casing program need prior approval if the items substituted are of lesser grade or different casing size or are Non-API. The Operator can exchange the components of the proposal with that of superior strength (i.e. changing from J-55 to N-80, or from 36# to 40#). Changes to the approved cement program need prior approval if the altered cement plan has less volume or strength or if the changes are substantial (i.e. Multistage tool, ECP, etc.). The initial wellhead installed on the well will remain on the well with spools used as needed.
2. Wait on cement (WOC) for Potash Areas: After cementing but before commencing any tests, the casing string shall stand cemented under pressure until both of the following conditions have been met: 1) cement reaches a minimum compressive strength of 500 psi for all cement blends, 2) until cement has been in place at least 24 hours. WOC time will be recorded in the driller's log. The casing integrity test can be done (prior to the cement setting up) immediately after bumping the plug.

3. Wait on cement (WOC) for Water Basin: After cementing but before commencing any tests, the casing string shall stand cemented under pressure until both of the following conditions have been met: 1) cement reaches a minimum compressive strength of 500 psi at the shoe, 2) until cement has been in place at least 8 hours. WOC time will be recorded in the driller's log. See individual casing strings for details regarding lead cement slurry requirements. The casing integrity test can be done (prior to the cement setting up) immediately after bumping the plug.
4. Provide compressive strengths including hours to reach required 500 pounds compressive strength prior to cementing each casing string. Have well specific cement details onsite prior to pumping the cement for each casing string.
5. No pea gravel permitted for remedial or fall back remedial without prior authorization from the BLM engineer.
6. On that portion of any well approved for a 5M BOPE system or greater, a pressure integrity test of each casing shoe shall be performed. Formation at the shoe shall be tested to a minimum of the mud weight equivalent anticipated to control the formation pressure to the next casing depth or at total depth of the well. This test shall be performed before drilling more than 20 feet of new hole.
7. If hardband drill pipe is rotated inside casing, returns will be monitored for metal. If metal is found in samples, drill pipe will be pulled and rubber protectors which have a larger diameter than the tool joints of the drill pipe will be installed prior to continuing drilling operations.
8. Whenever a casing string is cemented in the R-111-P potash area, the NMOCD requirements shall be followed.

B. PRESSURE CONTROL

1. All blowout preventer (BOP) and related equipment (BOPE) shall comply with well control requirements as described in Onshore Oil and Gas Order No. 2 and API RP 53 Sec. 17.
2. If a variance is approved for a flexible hose to be installed from the BOP to the choke manifold, the following requirements apply: The flex line must meet the requirements of API 16C. Check condition of flexible line from BOP to choke manifold, replace if exterior is damaged or if line fails test. Line to be as straight as possible with no hard bends and is to be anchored according to Manufacturer's requirements. The flexible hose can be exchanged with a hose of equal size and equal or greater pressure rating. Anchor requirements, specification sheet and hydrostatic pressure test certification matching the hose in service, to be onsite for review. These documents shall be posted in the company man's trailer and on the rig floor.

3. 5M or higher system requires an HCR valve, remote kill line and annular to match. The remote kill line is to be installed prior to testing the system and tested to stack pressure.
4. If the operator has proposed a multi-bowl wellhead assembly in the APD. The following requirements must be met:
 - a. Wellhead shall be installed by manufacturer's representatives, submit documentation with subsequent sundry.
 - b. If the welding is performed by a third party, the manufacturer's representative shall monitor the temperature to verify that it does not exceed the maximum temperature of the seal.
 - c. Manufacturer representative shall install the test plug for the initial BOP test.
 - d. Whenever any seal subject to test pressure is broken, all the tests in OOGO2.III.A.2.i must be followed.
 - e. If the cement does not circulate and one inch operations would have been possible with a standard wellhead, the well head shall be cut off, cementing operations performed and another wellhead installed.
5. The appropriate BLM office shall be notified a minimum of 4 hours in advance for a representative to witness the tests.
 - a. In a water basin, for all casing strings utilizing slips, these are to be set as soon as the crew and rig are ready and any fallback cement remediation has been done. The casing cut-off and BOP installation can be initiated four hours after installing the slips, which will be approximately six hours after bumping the plug. For those casing strings not using slips, the minimum wait time before cut-off is eight hours after bumping the plug. BOP/BOPE testing can begin after cut-off or once cement reaches 500 psi compressive strength (including lead when specified), whichever is greater. However, if the float does not hold, cut-off cannot be initiated until cement reaches 500 psi compressive strength (including lead when specified).
 - b. In potash areas, for all casing strings utilizing slips, these are to be set as soon as the crew and rig are ready and any fallback cement remediation has been done. For all casing strings, casing cut-off and BOP installation can be initiated at twelve hours after bumping the plug. However, **no tests** shall commence until the cement has had a minimum of 24 hours setup time, except the casing pressure test can be initiated immediately after bumping the plug (only applies to single stage cement jobs).
 - c. The tests shall be done by an independent service company utilizing a test plug not a cup or J-packer. The operator also has the option of utilizing an independent tester to test without a plug (i.e. against the casing) pursuant to Onshore Order 2 with the pressure not to exceed 70% of the burst rating for

the casing. Any test against the casing must meet the WOC time for water basin (8 hours) or potash (24 hours) or 500 pounds compressive strength, whichever is greater, prior to initiating the test (see casing segment as lead cement may be critical item).

- d. The test shall be run on a 5000 psi chart for a 2-3M BOP/BOP, on a 10000 psi chart for a 5M BOP/BOPE and on a 15000 psi chart for a 10M BOP/BOPE. If a linear chart is used, it shall be a one hour chart. A circular chart shall have a maximum 2 hour clock. If a twelve hour or twenty-four hour chart is used, tester shall make a notation that it is run with a two hour clock.
- e. The results of the test shall be reported to the appropriate BLM office.
- f. All tests are required to be recorded on a calibrated test chart. A copy of the BOP/BOPE test chart and a copy of independent service company test will be submitted to the appropriate BLM office.
- g. The BOP/BOPE test shall include a low pressure test from 250 to 300 psi. The test will be held for a minimum of 10 minutes if test is done with a test plug and 30 minutes without a test plug. This test shall be performed prior to the test at full stack pressure.
- h. BOP/BOPE must be tested by an independent service company within 500 feet of the top of the Wolfcamp formation if the time between the setting of the intermediate casing and reaching this depth exceeds 20 days. This test does not exclude the test prior to drilling out the casing shoe as per Onshore Order No. 2.

C. DRILLING MUD

Mud system monitoring equipment, with derrick floor indicators and visual and audio alarms, shall be operating before drilling into the Wolfcamp formation, and shall be used until production casing is run and cemented.

D. WASTE MATERIAL AND FLUIDS

All waste (i.e. drilling fluids, trash, salts, chemicals, sewage, gray water, etc.) created as a result of drilling operations and completion operations shall be safely contained and disposed of properly at a waste disposal facility. No waste material or fluid shall be disposed of on the well location or surrounding area.

Porto-johns and trash containers will be on-location during fracturing operations or any other crew-intensive operations.

RI12142020

PECOS DISTRICT SURFACE USE CONDITIONS OF APPROVAL

OPERATOR'S NAME: Marathon Oil Permian LLC
LEASE NO.: NMNM013074; NMNM017222
LOCATION: Section 34, T.24 S., R.28 E., NMPM
COUNTY: Eddy County, New Mexico

Kyle Federal 24-28-34 WD 6H

Surface Hole Location: 719' FSL & 1152' FWL, Section 34, T. 24 S., R. 28 E.
Bottom Hole Location: 330' FNL & 330' FWL, Section 34, T. 24 S, R. 28 E.

Kyle Federal 24-28-34 WXY 7H

Surface Hole Location: 719' FSL & 1182' FWL, Section 34, T. 24 S., R. 28 E.
Bottom Hole Location: 330' FNL & 330' FWL, Section 34, T. 24 S, R. 28 E.

Kyle Federal 24-28-34 TB 1H

Surface Hole Location: 719' FSL & 1212' FWL, Section 34, T. 24 S., R. 28 E.
Bottom Hole Location: 100' FNL & 995' FWL, Section 34, T. 24 S, R. 28 E.

Kyle Federal 24-28-34 WXY 8H

Surface Hole Location: 719' FSL & 1242' FWL, Section 34, T. 24 S., R. 28 E.
Bottom Hole Location: 330' FNL & 2335' FWL, Section 34, T. 24 S, R. 28 E.

Kyle 34 Federal Com WD 4H

Surface Hole Location: 971' FSL & 1753' FWL, Section 34, T. 24 S., R. 28 E.
Bottom Hole Location: 330' FNL & 1002' FWL, Section 34, T. 24 S, R. 28 E.

Kyle 34 Federal Com WD 9H

Surface Hole Location: 971' FSL & 1783' FWL, Section 34, T. 24 S., R. 28 E.
Bottom Hole Location: 330' FNL & 1662' FWL, Section 34, T. 24 S, R. 28 E.

Kyle 34 Federal Com WD 22H

Surface Hole Location: 971' FSL & 1813' FWL, Section 34, T. 24 S., R. 28 E.
Bottom Hole Location: 330' FNL & 2335' FWL, Section 34, T. 24 S, R. 28 E.

Kyle Federal 24-28-34 WA 14H

Surface Hole Location: 786' FSL & 1859' FEL, Section 34, T. 24 S., R. 28 E.
Bottom Hole Location: 100' FNL & 400' FEL, Section 34, T. 24 S, R. 28 E.

Kyle Federal 24-28-34 TB 13H

Surface Hole Location: 756' FSL & 1859' FEL, Section 34, T. 24 S., R. 28 E.
Bottom Hole Location: 100' FNL & 400' FEL, Section 34, T. 24 S, R. 28 E.

Kyle Federal 24-28-34 TB 12H

Surface Hole Location: 726' FSL & 1859' FEL, Section 34, T. 24 S., R. 28 E.

Bottom Hole Location: 100' FNL & 2334' FEL, Section 34, T. 24 S, R. 28 E.

Kyle Federal 24-28-34 WA 11H

Surface Hole Location: 696' FSL & 1860' FEL, Section 34, T. 24 S., R. 28 E.

Bottom Hole Location: 330' FNL & 1999' FEL, Section 34, T. 24 S, R. 28 E.

TABLE OF CONTENTS

Standard Conditions of Approval (COA) apply to this APD. If any deviations to these standards exist or special COAs are required, the section with the deviation or requirement will be checked below.

- ☐ **General Provisions**
- ☐ **Permit Expiration**
- ☐ **Archaeology, Paleontology, and Historical Sites**
- ☐ **Noxious Weeds**
- ☒ **Special Requirements**
 - Texas Hornshell
 - Cave/Karst
 - Hydrology
- ☐ **Construction**
 - Notification
 - Topsoil
 - Closed Loop System
 - Federal Mineral Material Pits
 - Well Pads
 - Roads
- ☐ **Road Section Diagram**
- ☐ **Production (Post Drilling)**
 - Well Structures & Facilities
- ☐ **Interim Reclamation**
- ☐ **Final Abandonment & Reclamation**

GENERAL PROVISIONS

The approval of the Application For Permit To Drill (APD) is in compliance with all applicable laws and regulations: 43 Code of Federal Regulations 3160, the lease terms, Onshore Oil and Gas Orders, Notices To Lessees, New Mexico Oil Conservation Division (NMOCD) Rules, National Historical Preservation Act As Amended, and instructions and orders of the Authorized Officer. Any request for a variance shall be submitted to the Authorized Officer on Form 3160-5, Sundry Notices and Report on Wells.

I. PERMIT EXPIRATION

If the permit terminates prior to drilling and drilling cannot be commenced within 60 days after expiration, an operator is required to submit Form 3160-5, Sundry Notices and Reports on Wells, requesting surface reclamation requirements for any surface disturbance. However, if the operator will be able to initiate drilling within 60 days after the expiration of the permit, the operator must have set the conductor pipe in order to allow for an extension of 60 days beyond the expiration date of the APD. (Filing of a Sundry Notice is required for this 60 day extension.)

II. ARCHAEOLOGICAL, PALEONTOLOGY & HISTORICAL SITES

Any cultural and/or paleontological resource discovered by the operator or by any person working on the operator's behalf shall immediately report such findings to the Authorized Officer. The operator is fully accountable for the actions of their contractors and subcontractors. The operator shall suspend all operations in the immediate area of such discovery until written authorization to proceed is issued by the Authorized Officer. An evaluation of the discovery shall be made by the Authorized Officer to determine the appropriate actions that shall be required to prevent the loss of significant cultural or scientific values of the discovery. The operator shall be held responsible for the cost of the proper mitigation measures that the Authorized Officer assesses after consultation with the operator on the evaluation and decisions of the discovery. Any unauthorized collection or disturbance of cultural or paleontological resources may result in a shutdown order by the Authorized Officer.

III. NOXIOUS WEEDS

The operator shall be held responsible if noxious weeds become established within the areas of operations. Weed control shall be required on the disturbed land where noxious weeds exist, which includes the roads, pads, associated pipeline corridor, and adjacent land affected by the establishment of weeds due to this action. The operator shall consult with the Authorized Officer for acceptable weed control methods, which include following EPA and BLM requirements and policies.

IV. SPECIAL REQUIREMENT(S)

Texas Hornshell

Oil and Gas Zone D - CCA Boundary requirements.

- Implement erosion control measures in accordance with the Reasonable and Prudent Practices for Stabilization ("RAPPS")
- Comply with SPCC requirements in accordance with 40 CFR Part 112;
- Comply with the United States Army Corp of Engineers (USACE) Nationwide 12 General Permit, where applicable;
- Utilize technologies (like underground borings for pipelines), where feasible;

- Educate personnel, agents, contractors, and subcontractors about the requirements of conservation measures, COAs, Stips and provide direction in accordance with the Permit.

Hydrology:

The entire well pad(s) will be bermed to prevent oil, salt, and other chemical contaminants from leaving the well pad. The compacted berm shall be constructed at a minimum of 12 inches with impermeable mineral material (e.g. caliche). Topsoil shall not be used to construct the berm. No water flow from the uphill side(s) of the pad shall be allowed to enter the well pad. The integrity of the berm shall be maintained around the surfaced pad throughout the life of the well and around the downsized pad after interim reclamation has been completed. Any water erosion that may occur due to the construction of the well pad during the life of the well will be quickly corrected and proper measures will be taken to prevent future erosion. Stockpiling of topsoil is required. The top soil shall be stockpiled in an appropriate location to prevent loss of soil due to water or wind erosion and not used for berming or erosion control. If fluid collects within the bermed area, the fluid must be vacuumed into a safe container and disposed of properly at a state approved facility.

TANK BATTERY:

Tank battery locations will be lined and bermed. A 20 mil permanent liner will be installed with a 4 oz. felt backing to prevent tears or punctures. Tank battery berms must be large enough to contain 1 ½ times the content of the largest tank or 24 hour production, whichever is greater. Automatic shut off, check valves, or similar systems will be installed for tanks to minimize the effects of catastrophic line failures used in production or drilling.

Cave/Karst Surface Mitigation

The following stipulations will be applied to minimize impacts during construction, drilling and production:

Construction:**General Construction:**

- No blasting
- The BLM, Carlsbad Field Office, will be informed immediately if any subsurface drainage channels, cave passages, or voids are penetrated during construction, and no additional construction shall occur until clearance has been issued by the Authorized Officer.
- All linear surface disturbance activities will avoid sinkholes and other karst features to lessen the possibility of encountering near surface voids during construction, minimize changes to runoff, and prevent untimely leaks and spills from entering the karst drainage system.
- All spills or leaks will be reported to the BLM immediately for their immediate and proper treatment.

Pad Construction:

- The pad will be constructed and leveled by adding the necessary fill and caliche – no blasting.
- The entire perimeter of the well pad will be bermed to prevent oil, salt, and other chemical contaminants from leaving the well pad.
- The compacted berm shall be constructed at a minimum of 12 inches high with impermeable mineral material (e.g., caliche).
- No water flow from the uphill side(s) of the pad shall be allowed to enter the well pad.
- The topsoil stockpile shall be located outside the bermed well pad.
- Topsoil, either from the well pad or surrounding area, shall not be used to construct the berm.
- No storm drains, tubing or openings shall be placed in the berm.
- If fluid collects within the bermed area, the fluid must be vacuumed into a safe container and disposed of properly at a state approved facility.
- The integrity of the berm shall be maintained around the surfaced pad throughout the life of the well and around the downsized pad after interim reclamation has been completed.
- Any access road entering the well pad shall be constructed so that the integrity of the berm height surrounding the well pad is not compromised (i.e. an access road crossing the berm cannot be lower than the berm height).
- Following a rain event, all fluids will vacuumed off of the pad and hauled off-site and disposed at a proper disposal facility.

Tank Battery Construction:

- The pad will be constructed and leveled by adding the necessary fill and caliche – no blasting.
- All tank battery locations and facilities will be lined and bermed.
- The liner should be at least 20 mil in thickness and installed with a 4 oz. felt backing, or equivalent, to prevent tears or punctures.
- Tank battery berms must be large enough to contain 1 ½ times the content of the largest tank.

Road Construction:

- Turnout ditches and drainage leadoffs will not be constructed in such a manner as to alter the natural flow of water into or out of cave or karst features.
- Special restoration stipulations or realignment may be required if subsurface features are discovered during construction.

-

Leak Detection System:

- A method of detecting leaks is required. The method could incorporate gauges to measure loss, situating valves and lines so they can be visually inspected, or installing electronic sensors to alarm when a leak is present.

- A leak detection plan will be submitted to BLM that incorporates an automatic shut off system (see below) to minimize the effects of an undesirable event that could negatively sensitive cave/karst resources.
- Well heads, pipelines (surface and buried), storage tanks, and all supporting equipment should be monitored regularly after installation to promptly identify and fix leaks.

Automatic Shut-off Systems:

- Automatic shut off, check valves, or similar systems will be installed for pipelines and tanks to minimize the effects of catastrophic line failures used in production or drilling.

Cave/Karst Subsurface Mitigation

The following stipulations will be applied to protect cave/karst and groundwater concerns:

Closed Loop System:

- A closed loop system using steel tanks will be utilized during drilling – no pits
- All fluids and cuttings will be hauled off-site and disposed of properly at an authorized site

Rotary Drilling with Fresh Water:

- Fresh water will be used as a circulating medium in zones where caves or karst features are expected. SEE ALSO: Drilling COAs for this well.

Directional Drilling:

- The kick off point for directional drilling will occur at least 100 feet below the bottom of the cave occurrence zone. SEE ALSO: Drilling COAs for this well.

Lost Circulation:

- ALL lost circulation zones between surface and the base of the cave occurrence zone will be logged and reported in the drilling report.
- If a void of four feet or more and circulation losses greater than 70 percent occur simultaneously while drilling in any cave-bearing zone, regardless of the type of drilling machinery used, the BLM will be notified immediately by the operator. The BLM will assess the situation and work with the operator on corrective actions to resolve the problem.

Abandonment Cementing:

- Additional plugging conditions of approval may be required upon well abandonment in high and medium karst potential occurrence zones.
- The BLM will assess the situation and work with the operator to ensure proper plugging of the wellbore.

Pressure Testing:

- The operator will perform annual pressure monitoring on all casing annuli and reported in a sundry notice.
- If the test results indicated a casing failure has occurred, remedial action will be undertaken to correct the problem to the BLM's approval.

V. CONSTRUCTION**A. NOTIFICATION**

The BLM shall administer compliance and monitor construction of the access road and well pad. Notify the Carlsbad Field Office at (575) 234-5909 at least 3 working days prior to commencing construction of the access road and/or well pad.

When construction operations are being conducted on this well, the operator shall have the approved APD and Conditions of Approval (COA) on the well site and they shall be made available upon request by the Authorized Officer.

B. TOPSOIL

The operator shall strip the top portion of the soil (root zone) from the entire well pad area and stockpile the topsoil along the edge of the well pad as depicted in the APD. The root zone is typically six (6) inches in depth. All the stockpiled topsoil will be redistributed over the interim reclamation areas. Topsoil shall not be used for berming the pad or facilities. For final reclamation, the topsoil shall be spread over the entire pad area for seeding preparation.

Other subsoil (below six inches) stockpiles must be completely segregated from the topsoil stockpile. Large rocks or subsoil clods (not evident in the surrounding terrain) must be buried within the approved area for interim and final reclamation.

C. CLOSED LOOP SYSTEM

Tanks are required for drilling operations: No Pits.

The operator shall properly dispose of drilling contents at an authorized disposal site.

D. FEDERAL MINERAL MATERIALS PIT

Payment shall be made to the BLM prior to removal of any federal mineral materials. Call the Carlsbad Field Office at (575) 234-5972.

E. WELL PAD SURFACING

Surfacing of the well pad is not required.

If the operator elects to surface the well pad, the surfacing material may be required to be removed at the time of reclamation. The well pad shall be constructed in a manner which creates the smallest possible surface disturbance, consistent with safety and operational needs.

F. EXCLOSURE FENCING (CELLARS & PITS)

Exclosure Fencing

The operator will install and maintain exclosure fencing for all open well cellars to prevent access to public, livestock, and large forms of wildlife before and after drilling operations until the pit is free of fluids and the operator initiates backfilling. (For examples of exclosure fencing design, refer to BLM's Oil and Gas Gold Book, Exclosure Fence Illustrations, Figure 1, Page 18.)

G. ON LEASE ACCESS ROADS

Road Width

The access road shall have a driving surface that creates the smallest possible surface disturbance and does not exceed fourteen (14) feet in width. The maximum width of surface disturbance, when constructing the access road, shall not exceed twenty-five (25) feet.

Surfacing

Surfacing material is not required on the new access road driving surface. If the operator elects to surface the new access road or pad, the surfacing material may be required to be removed at the time of reclamation.

Where possible, no improvements should be made on the unsurfaced access road other than to remove vegetation as necessary, road irregularities, safety issues, or to fill low areas that may sustain standing water.

The Authorized Officer reserves the right to require surfacing of any portion of the access road at any time deemed necessary. Surfacing may be required in the event the road deteriorates, erodes, road traffic increases, or it is determined to be beneficial for future field development. The surfacing depth and type of material will be determined at the time of notification.

Crowning

Crowning shall be done on the access road driving surface. The road crown shall have a grade of approximately 2% (i.e., a 1" crown on a 14' wide road). The road shall conform to Figure 1; cross section and plans for typical road construction.

Ditching

Ditching shall be required on both sides of the road.

Turnouts

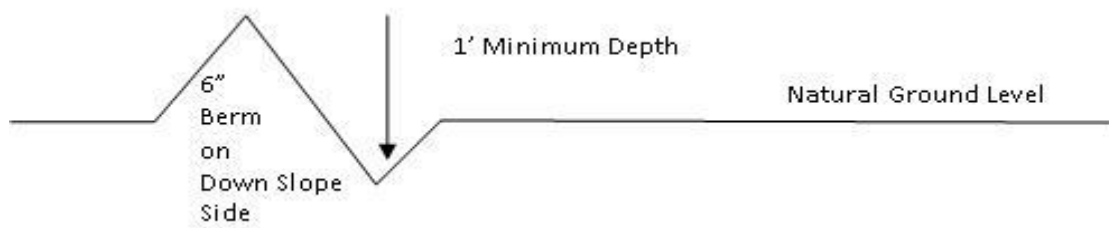
Vehicle turnouts shall be constructed on the road. Turnouts shall be intervisible with interval spacing distance less than 1000 feet. Turnouts shall conform to Figure 1; cross section and plans for typical road construction.

Drainage

Drainage control systems shall be constructed on the entire length of road (e.g. ditches, sidehill outslowing and insloping, lead-off ditches, culvert installation, and low water crossings).

A typical lead-off ditch has a minimum depth of 1 foot below and a berm of 6 inches above natural ground level. The berm shall be on the down-slope side of the lead-off ditch.

Cross Section of a Typical Lead-off Ditch



All lead-off ditches shall be graded to drain water with a 1 percent minimum to 3 percent maximum ditch slope. The spacing interval are variable for lead-off ditches and shall be determined according to the formula for spacing intervals of lead-off ditches, but may be amended depending upon existing soil types and centerline road slope (in %);

Formula for Spacing Interval of Lead-off Ditches

Example - On a 4% road slope that is 400 feet long, the water flow shall drain water into a lead-off ditch. Spacing interval shall be determined by the following formula:

$$400 \text{ foot road with } 4\% \text{ road slope: } \frac{400'}{4\%} + 100' = 200' \text{ lead-off ditch interval}$$

Cattle guards

An appropriately sized cattle guard sufficient to carry out the project shall be installed and maintained at fence/road crossings. Any existing cattle guards on the access road route shall be repaired or replaced if they are damaged or have deteriorated beyond practical use. The operator shall be responsible for the condition of the existing cattle guards that are in place and are utilized during lease operations.

Fence Requirement

Where entry is granted across a fence line, the fence shall be braced and tied off on both sides of the passageway prior to cutting. The operator shall notify the private surface landowner or the grazing allotment holder prior to crossing any fences.

Public Access

Public access on this road shall not be restricted by the operator without specific written approval granted by the Authorized Officer.

Construction Steps

1. Salvage topsoil
2. Construct road

3. Redistribute topsoil
4. Revegetate slopes

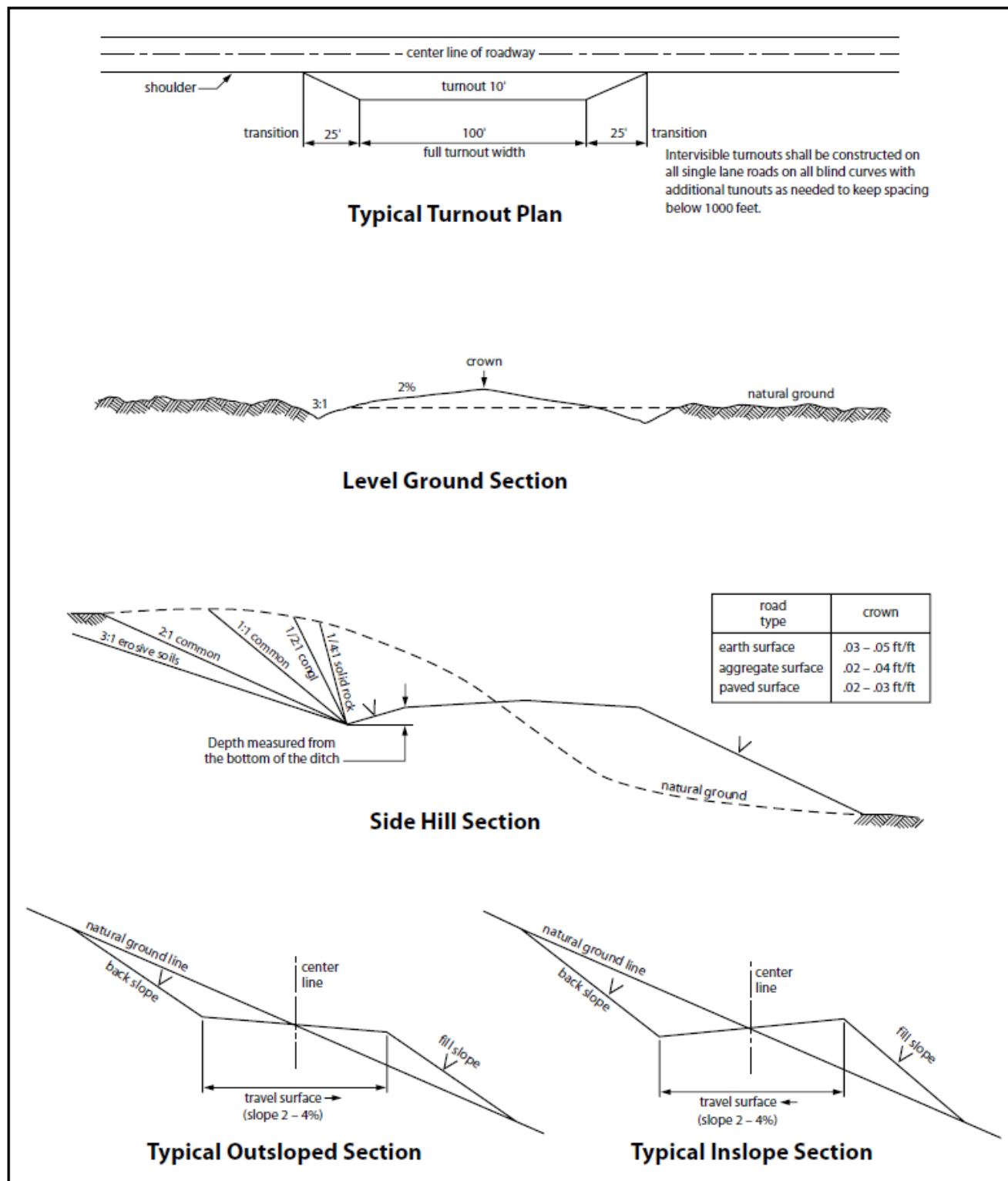


Figure 1. Cross-sections and plans for typical road sections representative of BLM resource or FS local and higher-class roads.

VI. PRODUCTION (POST DRILLING)

A. WELL STRUCTURES & FACILITIES

Placement of Production Facilities

Production facilities should be placed on the well pad to allow for maximum interim recontouring and revegetation of the well location.

Exclosure Netting (Open-top Tanks)

Immediately following active drilling or completion operations, the operator will take actions necessary to prevent wildlife and livestock access, including avian wildlife, to all open-topped tanks that contain or have the potential to contain salinity sufficient to cause harm to wildlife or livestock, hydrocarbons, or Resource Conservation and Recovery Act of 1976-exempt hazardous substances. At a minimum, the operator will net, screen, or cover open-topped tanks to exclude wildlife and livestock and prevent mortality. If the operator uses netting, the operator will cover and secure the open portion of the tank to prevent wildlife entry. The operator will net, screen, or cover the tanks until the operator removes the tanks from the location or the tanks no longer contain substances that could be harmful to wildlife or livestock. Use a maximum netting mesh size of 1 ½ inches. The netting must not be in contact with fluids and must not have holes or gaps.

Chemical and Fuel Secondary Containment and Exclosure Screening

The operator will prevent all hazardous, poisonous, flammable, and toxic substances from coming into contact with soil and water. At a minimum, the operator will install and maintain an impervious secondary containment system for any tank or barrel containing hazardous, poisonous, flammable, or toxic substances sufficient to contain the contents of the tank or barrel and any drips, leaks, and anticipated precipitation. The operator will dispose of fluids within the containment system that do not meet applicable state or U. S. Environmental Protection Agency livestock water standards in accordance with state law; the operator must not drain the fluids to the soil or ground. The operator will design, construct, and maintain all secondary containment systems to prevent wildlife and livestock exposure to harmful substances. At a minimum, the operator will install effective wildlife and livestock exclosure systems such as fencing, netting, expanded metal mesh, lids, and grate covers. Use a maximum netting mesh size of 1 ½ inches.

Open-Vent Exhaust Stack Exclosures

The operator will construct, modify, equip, and maintain all open-vent exhaust stacks on production equipment to prevent birds and bats from entering, and to discourage perching, roosting, and nesting. (*Recommended exclosure structures on open-vent exhaust stacks are in the shape of a cone.*) Production equipment includes, but may not be limited to, tanks, heater-treaters, separators, dehydrators, flare stacks, in-line units, and compressor mufflers.

Containment Structures

Proposed production facilities such as storage tanks and other vessels will have a secondary containment structure that is constructed to hold the capacity of 1.5 times the largest tank, plus freeboard to account for precipitation, unless more stringent protective requirements are deemed necessary.

Painting Requirement

All above-ground structures including meter housing that are not subject to safety requirements shall be painted a flat non-reflective paint color, **Shale Green** from the BLM Standard Environmental Color Chart (CC-001: June 2008).

VII. INTERIM RECLAMATION

During the life of the development, all disturbed areas not needed for active support of production operations should undergo interim reclamation in order to minimize the environmental impacts of development on other resources and uses.

Within six (6) months of well completion, operators should work with BLM surface management specialists (Jim Amos: 575-234-5909) to devise the best strategies to reduce the size of the location. Interim reclamation should allow for remedial well operations, as well as safe and efficient removal of oil and gas.

During reclamation, the removal of caliche is important to increasing the success of revegetating the site. Removed caliche that is free of contaminants may be used for road repairs, fire walls or for building other roads and locations. In order to operate the well or complete workover operations, it may be necessary to drive, park and operate on restored interim vegetation within the previously disturbed area. Disturbing revegetated areas for production or workover operations will be allowed. If there is significant disturbance and loss of vegetation, the area will need to be revegetated. Communicate with the appropriate BLM office for any exceptions/exemptions if needed.

All disturbed areas after they have been satisfactorily prepared need to be reseeded with the seed mixture provided below.

Upon completion of interim reclamation, the operator shall submit a Sundry Notices and Reports on Wells, Subsequent Report of Reclamation (Form 3160-5).

VIII. FINAL ABANDONMENT & RECLAMATION

At final abandonment, well locations, production facilities, and access roads must undergo "final" reclamation so that the character and productivity of the land are restored.

Earthwork for final reclamation must be completed within six (6) months of well plugging. All pads, pits, facility locations and roads must be reclaimed to a satisfactory revegetated, safe, and stable condition, unless an agreement is made with the landowner or BLM to keep the road and/or pad intact.

After all disturbed areas have been satisfactorily prepared, these areas need to be revegetated with the seed mixture provided below. Seeding should be accomplished by drilling on the contour whenever practical or by other approved methods. Seeding may need to be repeated until revegetation is successful, as determined by the BLM.

Operators shall contact a BLM surface protection specialist prior to surface abandonment operations for site specific objectives (Jim Amos: 575-234-5909).

Seed Mixture 1 for Loamy Sites

Holder shall seed all disturbed areas with the seed mixture listed below. The seed mixture shall be planted in the amounts specified in pounds of pure live seed (PLS)* per acre. There shall be no primary or secondary noxious weeds in the seed mixture. Seed shall be tested and the viability testing of seed will be done in accordance with State law(s) and within nine (9) months prior to purchase. Commercial seed shall be either certified or registered seed. The seed container shall be tagged in accordance with State law(s) and available for inspection by the Authorized Officer.

Seed shall be planted using a drill equipped with a depth regulator to ensure proper depth regulator to ensure proper depth of planting where drilling is possible. The seed mixture shall be evenly and uniformly planted over the disturbed area (small/heavier seeds have a tendency to drop the bottom of the drill and are planted first). Holder shall take appropriate measures to ensure this does not occur. Where drilling is not possible, seed shall be broadcast and the area shall be raked or chained to cover the seed. When broadcasting the seed, the pounds per acre shall be doubled. The seeding shall be repeated until a satisfactory stand is established as determined by the Authorized Officer. Evaluation of growth may not be made before completion of at least one full growing season after seeding.

Species to be planted in pounds of pure live seed* per acre:

Species	lb/acre
Plains lovegrass (<i>Eragrostis intermedia</i>)	0.5
Sand dropseed (<i>Sporobolus cryptandrus</i>)	1.0
Sideoats grama (<i>Bouteloua curtipendula</i>)	5.0
Plains bristlegrass (<i>Setaria macrostachya</i>)	2.0

*Pounds of pure live seed:

Pounds of seed x percent purity x percent germination = pounds pure live seed

District I

1625 N. French Dr., Hobbs, NM 88240
Phone:(575) 393-6161 Fax:(575) 393-0720

District II

811 S. First St., Artesia, NM 88210
Phone:(575) 748-1283 Fax:(575) 748-9720

District III

1000 Rio Brazos Rd., Aztec, NM 87410
Phone:(505) 334-6178 Fax:(505) 334-6170

District IV

1220 S. St Francis Dr., Santa Fe, NM 87505
Phone:(505) 476-3470 Fax:(505) 476-3462

State of New Mexico
Energy, Minerals and Natural Resources
Oil Conservation Division
1220 S. St Francis Dr.
Santa Fe, NM 87505

COMMENTS

Action 27251

COMMENTS

Operator:	OGRID:	Action Number:	Action Type:
MARATHON OIL PERMIAN LLC Permian Regulatory Team	372098	27251	FORM 3160-3
5555 San Felipe St. Houston, TX77056			

Created By	Comment	Comment Date
kpickford	KP GEO Review 5/11/2021	05/11/2021

District I

1625 N. French Dr., Hobbs, NM 88240
Phone:(575) 393-6161 Fax:(575) 393-0720

District II

811 S. First St., Artesia, NM 88210
Phone:(575) 748-1283 Fax:(575) 748-9720

District III

1000 Rio Brazos Rd., Aztec, NM 87410
Phone:(505) 334-6178 Fax:(505) 334-6170

District IV

1220 S. St Francis Dr., Santa Fe, NM 87505
Phone:(505) 476-3470 Fax:(505) 476-3462

State of New Mexico
Energy, Minerals and Natural Resources
Oil Conservation Division
1220 S. St Francis Dr.
Santa Fe, NM 87505

CONDITIONS

Action 27251

CONDITIONS OF APPROVAL

Operator:	OGRID:	Action Number:	Action Type:
MARATHON OIL PERMIAN LLC Permian Regulatory Team	372098	27251	FORM 3160-3
5555 San Felipe St. Houston, TX77056			

OCD Reviewer	Condition
kpickford	Notify OCD 24 hours prior to casing & cement
kpickford	Will require a File As Drilled C-102 and a Directional Survey with the C-104
kpickford	Once the well is spud, to prevent ground water contamination through whole or partial conduits from the surface, the operator shall drill without interruption through the fresh water zone or zones and shall immediately set in cement the water protection string
kpickford	Cement is required to circulate on both surface and intermediate1 strings of casing
kpickford	Oil base muds are not to be used until fresh water zones are cased and cemented providing isolation from the oil or diesel. This includes synthetic oils. Oil based mud, drilling fluids and solids must be contained in a steel closed loop system