

Submit 1 Copy To Appropriate District Office  
District I (575) 393-6161  
1625 N French Dr., Hobbs, NM 88240  
District II (575) 748-1283  
811 S First St., Artesia, NM 88210  
District III (505) 334-6178  
1000 Rio Brazos Rd., Aztec, NM 87410  
District IV (505) 476-3460  
1220 S St. Francis Dr., Santa Fe, NM 87505

State of New Mexico  
Energy, Minerals and Natural Resources

Form C-103  
Revised Jul 18 2013

OIL CONSERVATION DIVISION  
1220 South St. Francis Dr.  
Santa Fe, NM 87505

WELL API NO.  
30-025-38600

5. Indicate Type of Lease

STATE ☒ FEE ☐

6. State Oil & Gas Lease No.

7. Lease Name or Unit Agreement Name  
Pick SWD

8. Well Number #2

9. OGRID Number

229137

10. Pool name or Wildcat

SWD; Delaware

SUNDRY NOTICES AND REPORTS ON WELLS

(DO NOT USE THIS FORM FOR PROPOSALS TO DRILL OR TO DEEPEN OR PLUG BACK TO A DIFFERENT RESERVOIR. USE "APPLICATION FOR PERMIT" (FORM C-101) FOR SUCH PROPOSALS.)

1. Type of Well: Oil Well ☒ Gas Well ☐ Other ☐

2. Name of Operator

COG Operating, LLC

3. Address of Operator

2208 W. Main Street Artesia, NM 88210

4. Well Location

Unit Letter J : 2310 feet from the S line and 2310 feet from the E line

Section 23 Township 18S Range 33E NMPM County Lea

11. Elevation (Show whether DR, RKB, RT, GR, etc.)

3871' GR

12. Check Appropriate Box to Indicate Nature of Notice, Report or Other Data

NOTICE OF INTENTION TO:

- PERFORM REMEDIAL WORK ☐ PLUG AND ABANDON ☒  
TEMPORARILY ABANDON ☐ CHANGE PLANS ☐  
PULL OR ALTER CASING ☐ MULTIPLE COMPL ☐  
DOWNHOLE COMMINGLE ☐  
CLOSED-LOOP SYSTEM ☐  
OTHER: ☐

SUBSEQUENT REPORT OF:

- REMEDIAL WORK ☐ ALTERING CASING ☐  
COMMENCE DRILLING OPNS. ☐ P AND A ☐  
CASING/CEMENT JOB ☐  
OTHER: ☐

13. Describe proposed or completed operations. (Clearly state all pertinent details, and give pertinent dates, including estimated date of starting any proposed work). SEE RULE 19.15.7.14 NMAC. For Multiple Completions: Attach wellbore diagram of proposed completion or recompletion.

- Set 5 1/2" CIBP @ 5254'. Circ hole w/ MLF. Pressure test csg. Spot 25 sx cmt @ 5254-5054'.
- Spot 25 sx cmt @ 4120-4020'. WOC & Tag (DV Tool) 2a. Spot 25 Sx Class C 3500 WOC & Tag (7 Rivers)
- Spot 30 sx cmt @ 3124-2855' WOC & Tag (Yates & B/Salt)
- Perf & Sqz 55 sx cmt @ 1750-1500'. WOC & Tag (T/Salt & 8 5/8" Shoe)
- Spot 25 sx cmt @ 200' to surface.
- Cut off well head, verify cmt to surface, weld on Dry Hole Marker.

LPC Area Below ground marker send pics  
before backfilling hole

SEE ATTACHED  
CONDITIONS OF APPROVAL

Spud Date:

Rig Release Date:

I hereby certify that the information above is true and complete to the best of my knowledge and belief.

SIGNATURE

TITLE: Regulatory Technician

DATE: 3/10/2021

Type or print name Delilah Flores

E-mail address: Delilah.flores@conoco-hill.com

PHONE: 575-748-6946

For State Use Only

APPROVED BY:

Kerry Fortner

TITLE Compliance Officer A

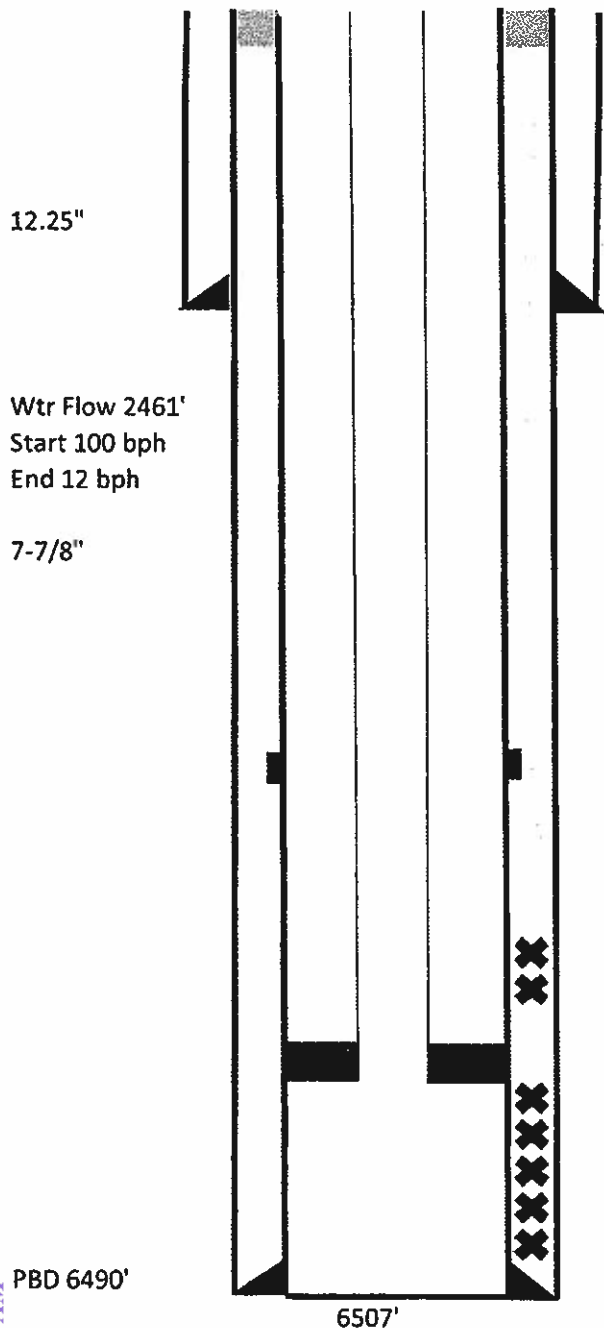
DATE 5/10/21

Conditions of Approval (if any):

Pick State 2 SWD  
2310' FSL, 2310' FEL  
J-23-18s-33e  
Lea, NM  
30-025-38600

Zero: 12' agl  
KB elev: 3883'  
GL elev: 3871'

C108 SWD-1155  
Max Press 1151 psi  
Permit 5757-6420'  
Actual 5757-6414'  
Approved 12/8/2008



8-5/8"/24/J55/STC @ 1566'

550 sx HLC + 250 sx "C"  
(circ 140 sx)

Wtr Flow 2461'  
Start 100 bph  
End 12 bph

Tubing: 2-7/8"/6.5/J55/EUE Glassbore  
Packer: 5-1/2"x2-7/8" 15.5-17 NP A51-X  
2205 Duplex O/O, NP O/S, 1.875" F

Wellhead:  
Rust - 1584  
T/salt - 1700  
B/salt - 2908  
Vates - 3074  
7 Rvs - 3474  
Qn - 4277  
SA - 5072  
Del - 5297

DV 4070'

5304-08' (10) Del Sqzd 200 sx "C" 5304-48'  
5344-5348' (10) Del Resqzd 150 sx "C" 5304-48'

Inj Pkr 5697'  
5757-97' (20) Del  
5898-5908' (22) Del

5909-6414' (172) Del

5-1/2"/17/J55/LTC @ 6503'

1st: 360 sx Super H  
(circ 100 sx off DV)  
2nd: 600 sx HLC + 175 sx Super H  
(circ 70 sx)  
Pump 37 sx "C" down annulus

PBD 6490'

6507'

May 2008: Went into service.  
Jul 2014: Repair workover tbg/pkr leak.

kbcollins

17-Sep-19

32.7322  
-103.6327

Pick State 2 SWD  
2310' FSL, 2310' FEL  
J-23-18s-33e  
Lea, NM  
30-025-38600

Zero: 12' agl  
KB elev: 3883'  
GL elev: 3871'

C108 SWD-1155  
Max Press 1151 psi  
Permit 5757-6420'  
Actual 5757-6414'  
Approved 12/8/2008

5. Spot 25 sx cmt @ 200' to surface.

12.25"

Wtr Flow 2461'  
Start 100 bph  
End 12 bph

7-7/8"

8-5/8"/24/J55/STC @ 1566'

550 sx HLC + 250 sx "C"  
(circ 140 sx)

4. Perf & Sqz 55 sx cmt @ 1750-1500'. WOC & Tag (T/Salt & 8 5/8" Shoe)

Tubing: 2-7/8" /6.5/J55/EUE Glassbore  
Packer: 5-1/2"x2-7/8" 15.5-17 NP AS1-X  
2205 Duplex O/O, NP O/S, 1.875" F  
Wellhead:

3. Spot 30 sx cmt @ 3124-2855' WOC & Tag (Yates & B/Salt)

2a. Spot 25 Sx Class C 3500 WOC & TAg (7 Rivers)

DV 4070'

2. Spot 25 sx cmt @ 4120-4020'. WOC & Tag (DV Tool)

1. Set 5 1/2" CIBP @ 5254'. Circ hole w/ MLF. Pressure test csg. Spot 25 sx cmt @ 5254-5054'.

5304-08' (10) Del Sqzd 200 sx "C" 5304-48'  
5344-5348' (10) Del Resqzd 150 sx "C" 5304-48'

Inj Pkr 5697'  
5757-97' (20) Del  
5898-5908' (22) Del

5909-6414' (172) Del

5-1/2"/17/J55/LTC @ 6503'

1st: 360 sx Super H  
(circ 100 sx off DV)  
2nd: 600 sx HLC + 175 sx Super H  
(circ 70 sx)  
Pump 37 sx "C" down annulus

PBD 6490'

6507'

May 2008: Went into service.  
Jul 2014: Repair workover tbg/pkr leak.

kbcollins 17-Sep-19

**CONDITIONS OF APPROVAL  
FOR PLUGGING AND ABANDONMENT  
OCD - Southern District**

The following is a guide or checklist in preparation of a plugging program, this is not all inclusive and care must be exercised in establishing special plugging programs in unique and unusual cases, Notify NMOCD District Office I (Hobbs) at (575)-263-6633 at least 24 hours before beginning work. After MIRU rig will remain on well until it is plugged to surface. OCD is to be notified before rig down.

**Company representative will be on location during plugging procedures.**

1. A notice of intent to plug and abandon a wellbore is required to be approved before plugging operations are conducted. A cement evaluation tool is required in order to ensure isolation of producing formations, protection of water and correlative rights. A cement bond log or other accepted cement evaluation tool is to be provided to the division for evaluation if one has not been previously run or if the well did not have cement circulated to surface during the original casing cementing job or subsequent cementing jobs. Insure all bradenheads have been exposed, identified and valves are operational prior to rig up.
2. Closed loop system is to be used for entire plugging operation. Upon completion, contents of steel pits are to be hauled to a permitted disposal location.
3. Trucking companies being used to haul oilfield waste fluids to a disposal - commercial or private- shall have an approved NMOCD C-133 permit. A copy of this permit shall be available in each truck used to haul waste products. It is the responsibility of the operator as well as the contractor, to verify that this permit is in place prior to performing work. Drivers shall be able to produce a copy upon request of an NMOCD Field inspector.
4. Filing a subsequent C-103 will serve as notification that the well has been plugged.
5. A final C-103 shall be filed (and a site inspection by NMOCD Inspector to determine if the location is satisfactorily cleaned, all equipment, electric poles and trash has been removed to Meet NMOCD standards) before bonding can be released.
6. If work has not begun within 1 Year of the approval of this procedure, an extension request must be file stating the reason the well has not been plugged.
7. Squeeze pressures are not to exceed 500 psi, unless approval is given by NMOCD.
8. Produced water will not be used during any part of the plugging operation.
9. Mud laden fluids must be placed between all cement plugs mixed at 25 sacks per 100 bbls of water.
10. All cement plugs will be a minimum of 100' in length or a minimum of 25 sacks of cement, whichever is greater. 50' of calculated cement excess required for inside casing plugs and 100% calculated cement excess required on outside casing plugs.
11. Class 'C' cement will be used above 7500 feet.
12. Class 'H' cement will be used below 7500 feet.
13. A cement plug is required to be set 50' above and 50' below, casing stubs, DV tools, attempted casing cut offs, cement tops outside casing, salt sections and anywhere the casing is perforated, these plugs require a 4 hour WOC and then will be tagged
14. All Casing Shoes Will Be Perforated 50' below shoe depth and Attempted to be Squeezed, cement needs to be 50' above and 50' Below Casing Shoe inside the Production Casing.
16. When setting the top out cement plug in production, intermediate and surface casing, wellbores should remain full at least 30 minutes after plugs are set
17. A CIBP is to be set within 100' of production perforations, capped with 100' of cement, WOC 4 hours and tag.
18. A CIBP with 35' of cement may be used in lieu of the 100' plug if set with a bailer. This plug will be placed within 100' of the top perforation, (WOC 4 hrs and tag).

19. No more than 3000' is allowed between cement plugs in cased hole and 2000' in open hole.
20. Some of the Formations to be isolated with cement plugs are: These plugs to be set to isolate formation tops
- A) Fusselman
  - B) Devonian
  - C) Morrow
  - D) Wolfcamp
  - E) Bone Springs
  - F) Delaware
  - G) Any salt sections
  - H) Abo
  - I) Glorieta
  - J) Yates.
  - K) Potash---(In the R-111-P Area (Potash Mine Area),

A solid cement plug must be set across the salt section. Fluid used to mix the cement shall be saturated with the salts that are common to the section penetrated and in suitable proportions, not more than 3% calcium chloride (by weight of cement) will be considered the desired mixture whenever possible, woe 4 hours and tag, this plug will be SO' below the bottom and 50' above the top of the Formation.

21. If cement does not exist behind casing strings at recommended formation depths, the casing can be cut and pulled with plugs set at recommended depths. If casing is not pulled, perforations will be shot and cement squeezed behind casing, woe and tagged. These plugs will be set SO' below formation bottom to 50' above formation top inside the casing.

### **DRY HOLE MARKER REQ.UIRMENTS**

The operator shall mark the exact location of the plugged and abandoned well with a steel marker not less than four inches in diameter, 3' below ground level with a plate of at least 1/4" welded to the top of the casing and the dry hole marker welded on the plate with the following information welded on the dry hole marker:

1. Operator name
2. Lease and Well Number
3. API Number
4. Unit letter
5. Quarter Section (feet from the North, South, East or West)
6. Section, Township and Range
7. Plugging Date
8. County

### **SPECIAL CASES -----AGRICULTURE OR PRARIE CHICKEN BREEDING AREAS**

In these areas, a below ground marker is required with all pertinent information mentioned above on a plate, set 3' below ground level, a picture of the plate will be supplied to NMOCD for record, the exact location of the marker (longitude and latitude by GPS) will be provided to NMOCD (We typically require a current survey to verify the GPS)

### **SITE REMEDIATION DUE WITHIN ONE YEAR OF WELL PLUGGING COMPLETION**

**District I**  
1625 N. French Dr., Hobbs, NM 88240  
Phone:(575) 393-6161 Fax:(575) 393-0720  
**District II**  
811 S. First St., Artesia, NM 88210  
Phone:(575) 748-1283 Fax:(575) 748-9720  
**District III**  
1000 Rio Brazos Rd., Aztec, NM 87410  
Phone:(505) 334-6178 Fax:(505) 334-6170  
**District IV**  
1220 S. St Francis Dr., Santa Fe, NM 87505  
Phone:(505) 476-3470 Fax:(505) 476-3462

**State of New Mexico**  
**Energy, Minerals and Natural Resources**  
**Oil Conservation Division**  
**1220 S. St Francis Dr.**  
**Santa Fe, NM 87505**

COMMENTS

Action 20404

**COMMENTS**

Operator: COG OPERATING LLC      600 W Illinois Ave      Midland, TX79701			OGRID: 229137	Action Number: 20404	Action Type: C-103F
Created By	Comment			Comment Date	
plmartinez	DATA ENTRY PM			05/11/2021	

**District I**  
1625 N. French Dr., Hobbs, NM 88240  
Phone:(575) 393-6161 Fax:(575) 393-0720  
**District II**  
811 S. First St., Artesia, NM 88210  
Phone:(575) 748-1283 Fax:(575) 748-9720  
**District III**  
1000 Rio Brazos Rd., Aztec, NM 87410  
Phone:(505) 334-6178 Fax:(505) 334-6170  
**District IV**  
1220 S. St Francis Dr., Santa Fe, NM 87505  
Phone:(505) 476-3470 Fax:(505) 476-3462

**State of New Mexico**  
**Energy, Minerals and Natural Resources**  
**Oil Conservation Division**  
**1220 S. St Francis Dr.**  
**Santa Fe, NM 87505**

CONDITIONS  
  
Action 20404

CONDITIONS OF APPROVAL

Operator: COG OPERATING LLC      600 W Illinois Ave      Midland, TX79701			OGRID: 229137	Action Number: 20404	Action Type: C-103F
OCD Reviewer	Condition				
kfortner	See attached conditions of approval note changes to procedure				