

Form 3160-3
(June 2015)FORM APPROVED
OMB No. 1004-0137
Expires: January 31, 2018

UNITED STATES
DEPARTMENT OF THE INTERIOR
BUREAU OF LAND MANAGEMENT
APPLICATION FOR PERMIT TO DRILL OR REENTER

| | | |
|---|--|--|
| 1a. Type of work: <input checked="" type="checkbox"/> DRILL <input type="checkbox"/> REENTER 1b. Type of Well: <input checked="" type="checkbox"/> Oil Well <input type="checkbox"/> Gas Well <input type="checkbox"/> Other 1c. Type of Completion: <input type="checkbox"/> Hydraulic Fracturing <input checked="" type="checkbox"/> Single Zone <input type="checkbox"/> Multiple Zone | | 5. Lease Serial No. NMNM103877 6. If Indian, Allottee or Tribe Name 7. If Unit or CA Agreement, Name and No. 8. Lease Name and Well No. EASY COMPANY 36/35 B3IJ FED COM 1H 9. API Well No. 30 015 48480 |
| 2. Name of Operator MEWBOURNE OIL COMPANY 3a. Address , , 3b. Phone No. (include area code) | | 10. Field and Pool, or Exploratory Grama Ridge/BONE SPRING 11. Sec., T. R. M. or Blk. and Survey or Area SEC 36/T20S/R28E/NMP |
| 4. Location of Well (Report location clearly and in accordance with any State requirements. *) At surface NESE / 1330 FSL / 205 FEL / LAT 32.5263348 / LONG -104.1235203 At proposed prod. zone NWSE / 1330 FSL / 2546 FEL / LAT 32.5263366 / LONG -104.1482899 | | 12. County or Parish EDDY 13. State NM |
| 14. Distance in miles and direction from nearest town or post office* 20 miles | 15. Distance from proposed* location to nearest property or lease line, ft. (Also to nearest drig. unit line, if any) 185 feet | 16. No of acres in lease 17. Spacing Unit dedicated to this well 320.0 |
| 18. Distance from proposed location* to nearest well, drilling, completed, applied for, on this lease, ft. 1012 feet | 19. Proposed Depth 8880 feet / 16704 feet | 20. BLM/BIA Bond No. in file FED: NM1693 |
| 21. Elevations (Show whether DF, KDB, RT, GL, etc.) 3229 feet | 22. Approximate date work will start* 11/16/2019 | 23. Estimated duration 60 days |
| 24. Attachments | | |

The following, completed in accordance with the requirements of Onshore Oil and Gas Order No. 1, and the Hydraulic Fracturing rule per 43 CFR 3162.3-3 (as applicable)

- | | |
|---|---|
| 1. Well plat certified by a registered surveyor. 2. A Drilling Plan. 3. A Surface Use Plan (if the location is on National Forest System Lands, the SUPO must be filed with the appropriate Forest Service Office). | 4. Bond to cover the operations unless covered by an existing bond on file (see Item 20 above). 5. Operator certification. 6. Such other site specific information and/or plans as may be requested by the BLM. |
|---|---|

| | | |
|--|--|---------------------------|
| 25. Signature (Electronic Submission) | Name (Printed/Typed) BRADLEY BISHOP / Ph: (575) 393-5905 | Date 09/25/2019 |
| Title Regulatory | | |
| Approved by (Signature) (Electronic Submission) | Name (Printed/Typed) Cody Layton / Ph: (575) 234-5959 | Date 05/10/2021 |
| Title Assistant Field Manager Lands & Minerals Office Carlsbad Field Office | | |

Application approval does not warrant or certify that the applicant holds legal or equitable title to those rights in the subject lease which would entitle the applicant to conduct operations thereon.

Conditions of approval, if any, are attached.

Title 18 U.S.C. Section 1001 and Title 43 U.S.C. Section 1212, make it a crime for any person knowingly and willfully to make to any department or agency of the United States any false, fictitious or fraudulent statements or representations as to any matter within its jurisdiction.

(Continued on page 2)

*(Instructions on page 2)



District I
1625 N. French Dr., Hobbs, NM 88240
Phone: (575) 393-6161 Fax: (575) 393-0720
District II
811 S. First St., Artesia, NM 88210
Phone: (575) 748-1283 Fax: (575) 748-9720
District III
1000 Rio Brazos Road, Aztec, NM 87410
Phone: (505) 334-6178 Fax: (505) 334-6170
District IV
1220 S. St. Francis Dr., Santa Fe, NM 87505
Phone: (505) 476-3460 Fax: (505) 476-3462

State of New Mexico
Energy, Minerals & Natural Resources Department
OIL CONSERVATION DIVISION
1220 South St. Francis Dr.
Santa Fe, NM 87505

Form C-102
Revised August 1, 2011
Submit one copy to appropriate
District Office

☐ AMENDED REPORT

WELL LOCATION AND ACREAGE DEDICATION PLAT

| | | | | | | | | | |
|---|---------|---------------------------------|-------|---------------------------|---------------|------------------|---------------|----------------|--------|
| 1 API Number | | 2 Pool Code | | 3 Pool Name | | | | | |
| | | 3713 | | AVALON; BONE SPRING, EAST | | | | | |
| 4 Property Code | | 5 Property Name | | | | | | 6 Well Number | |
| | | EASY COMPANY 36/35 B3IJ FED COM | | | | | | 1H | |
| 7 OGRID NO. | | 8 Operator Name | | | | | | 9 Elevation | |
| 14744 | | MEWBOURNE OIL COMPANY | | | | | | 3229' | |
| 10 Surface Location | | | | | | | | | |
| UL or lot no. | Section | Township | Range | Lot Idn | Feet from the | North/South line | Feet From the | East/West line | County |
| I | 36 | 20S | 28E | | 1330 | SOUTH | 205 | EAST | EDDY |
| 11 Bottom Hole Location If Different From Surface | | | | | | | | | |
| UL or lot no. | Section | Township | Range | Lot Idn | Feet from the | North/South line | Feet from the | East/West line | County |
| j | 35 | 20S | 28E | | 1330 | SOUTH | 2546 | EAST | EDDY |
| 12 Dedicated Acres | | 13 Joint or Infill | | 14 Consolidation Code | | 15 Order No. | | | |
| 240 | | | | | | | | | |

No allowable will be assigned to this completion until all interest have been consolidated or a non-standard unit has been approved by the division.

| | | |
|---|--|--|
| <p>16</p> <p><u>CORNER DATA</u> NAD 83 GRID - NM EAST</p> <p><u>GEODETIC DATA</u> NAD 83 GRID - NM EAST</p> <p><u>SURFACE LOCATION</u> N: 555275.0 - E: 606002.8 LAT: 32.5263348° N LONG: 104.1235203° W</p> <p><u>BOTTOM HOLE</u> N: 555261.5 - E: 598368.7 LAT: 32.5263366° N LONG: 104.1482899° W</p> <p>A: FOUND BRASS CAP "1942" N: 553929.4 - E: 595619.2</p> <p>B: FOUND BRASS CAP "1942" N: 556579.1 - E: 595625.7</p> <p>C: FOUND BRASS CAP "1942" N: 559229.0 - E: 595632.4</p> <p>D: FOUND BRASS CAP "1942" N: 559235.4 - E: 598282.6</p> <p>E: FOUND BRASS CAP "1942" N: 559240.0 - E: 600933.9</p> <p>F: FOUND BRASS CAP "1942" N: 559246.2 - E: 603591.0</p> <p>G: FOUND 1/2" REBAR N: 559255.8 - E: 606249.5</p> <p>H: FOUND BRASS CAP "1916" N: 556598.0 - E: 606221.2</p> <p>I: FOUND BRASS CAP "1916" N: 553945.7 - E: 606194.2</p> <p>J: FOUND BRASS CAP "1942" N: 553940.5 - E: 603551.0</p> <p>K: FOUND BRASS CAP "1942" N: 553936.8 - E: 600906.8</p> <p>L: FOUND BRASS CAP "1942" N: 553931.6 - E: 598264.1</p> <p>M: FOUND BRASS CAP "1942" N: 556587.4 - E: 600920.6</p> | | <p>17 OPERATOR CERTIFICATION</p> <p>I hereby certify that the information contained herein is true and complete to the best of my knowledge and belief, and that this organization either owns a working interest or unleased mineral interest in the land including the proposed bottom hole location or has a right to drill this well at this location pursuant to a contract with an owner of such a mineral or working interest, or to a voluntary pooling agreement or a compulsory pooling order heretofore entered by the division.</p> <p><i>Bradley Bishop</i> 9-13-19 Signature Date BRADLEY BISHOP Printed Name BBISHOP@MEWBOURNE.COM E-mail Address</p> |
| <p>18 SURVEYOR CERTIFICATION</p> <p>I hereby certify that the well location shown on this plat was plotted from field notes of actual surveys made by me or under my supervision, and that the same is true and correct to the best of my belief.</p> <p>07-02-2019 Date of Survey</p> <p>Signature and Seal of Professional Surveyor</p> <p>19680 Certificate Number</p> <p>NEW MEXICO PROFESSIONAL SURVEYOR 19680</p> | | |

RRC-Job No: LS19070733

District I
1625 N. French Dr., Hobbs, NM 88240
District II
811 S. First St., Artesia, NM 88210
District III
1000 Rio Brazos Road, Aztec, NM 87410
District IV
1220 S. St. Francis Dr., Santa Fe, NM 87505

State of New Mexico
Energy, Minerals and Natural Resources Department
Oil Conservation Division
1220 South St. Francis Dr.
Santa Fe, NM 87505

Submit Original
to Appropriate
District Office

GAS CAPTURE PLAN

Date: 9-13-19

☒ Original

Operator & OGRID No.: Mewbourne Oil Company - 14744

☐ Amended - Reason for Amendment: _____

This Gas Capture Plan outlines actions to be taken by the Operator to reduce well/production facility flaring/venting for new completion (new drill, recomple to new zone, re-frac) activity.

Note: Form C-129 must be submitted and approved prior to exceeding 60 days allowed by Rule (Subsection A of 19.15.18.12 NMAC).

Well(s)/Production Facility – Name of facility

The well(s) that will be located at the production facility are shown in the table below.

| Well Name | API | Well Location (ULSTR) | Footages | Expected MCF/D | Flared or Vented | Comments |
|-------------------------------------|-----|-----------------------|--------------------|----------------|------------------|-------------------|
| Easy Company 36/35 B3IJ Fed Com #1H | | 1 36- 20S - 28E | 1330 FSL & 205 FEL | 0 | NA | ONLINE AFTER FRAC |
| | | | | | | |

Gathering System and Pipeline Notification

Well(s) will be connected to a production facility after flowback operations are complete, if gas transporter system is in place. The gas produced from production facility is dedicated to Western and will be connected to Western low/high pressure gathering system located in EDDY County, New Mexico. It will require 3,400 ' of pipeline to connect the facility to low/high pressure gathering system. Mewbourne Oil Company provides (periodically) to Western a drilling, completion and estimated first production date for wells that are scheduled to be drilled in the foreseeable future. In addition, Mewbourne Oil Company and Western have periodic conference calls to discuss changes to drilling and completion schedules. Gas from these wells will be processed at Western Processing Plant located in Sec. 36, Blk. 58 T1S, Culberson County, Texas. The actual flow of the gas will be based on compression operating parameters and gathering system pressures.

Flowback Strategy

After the fracture treatment/completion operations, well(s) will be produced to temporary production tanks and gas will be flared or vented. During flowback, the fluids and sand content will be monitored. When the produced fluids contain minimal sand, the wells will be turned to production facilities. Gas sales should start as soon as the wells start flowing through the production facilities, unless there are operational issues on Western system at that time. Based on current information, it is Operator's belief the system can take this gas upon completion of the well(s).

Safety requirements during cleanout operations from the use of underbalanced air cleanout systems may necessitate that sand and non-pipeline quality gas be vented and/or flared rather than sold on a temporary basis.

Alternatives to Reduce Flaring

Below are alternatives considered from a conceptual standpoint to reduce the amount of gas flared.

- Power Generation – On lease
 - Only a portion of gas is consumed operating the generator, remainder of gas will be flared
- Compressed Natural Gas – On lease
 - Gas flared would be minimal, but might be uneconomical to operate when gas volume declines
- NGL Removal – On lease
 - Plants are expensive, residue gas is still flared, and uneconomical to operate when gas volume declines



U.S. Department of the Interior
BUREAU OF LAND MANAGEMENT

Drilling Plan Data Report

05/12/2021

APD ID: 10400047478

Submission Date: 09/25/2019

Highlighted data reflects the most recent changes

Operator Name: MEWBOURNE OIL COMPANY

Well Name: EASY COMPANY 36/35 B3IJ FED COM

Well Number: 1H

Show Final Text

Well Type: OIL WELL

Well Work Type: Drill

Section 1 - Geologic Formations

| Formation ID | Formation Name | Elevation | True Vertical Depth | Measured Depth | Lithologies | Mineral Resources | Producing Formation |
|--------------|-----------------|-----------|---------------------|----------------|---------------------|-------------------|---------------------|
| 538554 | UNKNOWN | 3229 | 27 | 27 | OTHER : Topsoil | NONE | N |
| 538558 | TOP SALT | 2674 | 555 | 555 | SALT | NONE | N |
| 538555 | BOTTOM SALT | 2294 | 935 | 935 | SALT | NONE | N |
| 538562 | YATES | 2054 | 1175 | 1175 | SANDSTONE | NATURAL GAS, OIL | N |
| 538563 | CAPITAN REEF | 1774 | 1455 | 1455 | DOLOMITE, Limestone | USEABLE WATER | N |
| 538560 | DELAWARE | 144 | 3085 | 3085 | Limestone | NATURAL GAS, OIL | N |
| 538553 | BONE SPRINGS | -2441 | 5670 | 5670 | Limestone, SHALE | NATURAL GAS, OIL | N |
| 538556 | BONE SPRING 1ST | -3576 | 6805 | 6805 | SANDSTONE | NATURAL GAS, OIL | N |
| 538557 | BONE SPRING 2ND | -4281 | 7510 | 7510 | SANDSTONE | NATURAL GAS, OIL | N |
| 541039 | BONE SPRING 3RD | -5516 | 8745 | 8745 | SANDSTONE | NATURAL GAS, OIL | Y |

Section 2 - Blowout Prevention

Pressure Rating (PSI): 3M

Rating Depth: 16704

Equipment: Annular, Pipe Rams, Blind Ram

Requesting Variance? YES

Variance request: A variance is requested for the use of a flexible choke line from the BOP to Choke Manifold. Anchors not required by manufacturer. A multi-bowl wellhead is being used. See attached schematic

Testing Procedure: BOP/BOPE will be tested by an independent service company to 250 psi low and the high pressure indicated above per Onshore Order 2 requirements. The System may be upgraded to a higher pressure but still tested to the working pressure listed in the table above. If the system is upgraded all the components installed will be functional and tested. Pipe rams will be operationally checked each 24 hour period. Blind rams will be operationally checked on each trip out of the hole. These checks will be noted on the daily tour sheets. Other accessories to the BOP equipment will include a Kelly cock and floor safety valve (inside BOP) and choke lines and choke manifold.

Choke Diagram Attachment:

Operator Name: MEWBOURNE OIL COMPANY

Well Name: EASY COMPANY 36/35 B3IJ FED COMWell Number: 1H

Easy_Company_36_35_B3IJ_Fed_Com_1H_3M_BOPE_Choke_Diagram_20190918142847.pdf

Easy_Company_36_35_B3IJ_Fed_Com_1H_Flex_Line_Specs_20190918142847.pdf

Easy_Company_36_35_B3IJ_Fed_Com_1H_Flex_Line_Specs_API_16C_20190918142848.pdf

BOP Diagram Attachment:

Easy_Company_36_35_B3IJ_Fed_Com_1H_H2S_Plan_20190918142858.pdf

Easy_Company_36_35_B3IJ_Fed_Com_1H_3M_BOPE_Schematic_20190918142859.pdf

Section 3 - Casing

| Casing ID | String Type | Hole Size | Csg Size | Condition | Standard | Tapered String | Top Set MD | Bottom Set MD | Top Set TVD | Bottom Set TVD | Top Set MSL | Bottom Set MSL | Calculated casing length MD | Grade | Weight | Joint Type | Collapse SF | Burst SF | Joint SF Type | Joint SF | Body SF Type | Body SF |
|-----------|--------------|-----------|----------|-----------|----------|----------------|------------|---------------|-------------|----------------|-------------|----------------|-----------------------------|-------|--------|------------|-------------|----------|---------------|----------|--------------|---------|
| 1 | SURFACE | 26 | 20.0 | NEW | API | N | 0 | 330 | 0 | 330 | 3229 | 2899 | 330 | J-55 | 94 | BUTT | 3.614 | 14.6 | DRY | 45.2 | DRY | 47.71 |
| 2 | INTERMEDIATE | 17.5 | 13.375 | NEW | API | N | 0 | 1350 | 0 | 1350 | 3229 | 1879 | 1350 | H-40 | 48 | ST&C | 1.22 | 2.74 | DRY | 4.97 | DRY | 8.35 |
| 3 | INTERMEDIATE | 12.25 | 9.625 | NEW | API | N | 0 | 3010 | 0 | 3010 | 3624 | 219 | 3010 | J-55 | 36 | LT&C | 1.27 | 2.2 | DRY | 4.1 | DRY | 5.1 |
| 4 | PRODUCTION | 8.75 | 7.0 | NEW | API | N | 0 | 9360 | 0 | 9074 | 3635 | -5845 | 9360 | P-110 | 26 | LT&C | 1.88 | 2.49 | DRY | 2.91 | DRY | 3.79 |
| 5 | LINER | 6.125 | 4.5 | NEW | API | N | 8600 | 16705 | 8597 | 9074 | -5368 | -5845 | 8105 | P-110 | 13.5 | LT&C | 2.52 | 2.93 | DRY | 2.33 | DRY | 2.91 |

Casing Attachments

Operator Name: MEWBOURNE OIL COMPANY

Well Name: EASY COMPANY 36/35 B3IJ FED COM

Well Number: 1H

Casing Attachments

Casing ID: 1String Type: SURFACE

Inspection Document:

Spec Document:

Tapered String Spec:

Casing Design Assumptions and Worksheet(s):

Easy_Company_36_35_B3IJ_Fed_Com_1H_Csg_Assumptions_20190918143158.pdf

Casing ID: 2String Type: INTERMEDIATE

Inspection Document:

Spec Document:

Tapered String Spec:

Casing Design Assumptions and Worksheet(s):

Easy_Company_36_35_B3IJ_Fed_Com_1H_Csg_Assumptions_20190918143304.pdf

Casing ID: 3String Type: INTERMEDIATE

Inspection Document:

Spec Document:

Tapered String Spec:

Casing Design Assumptions and Worksheet(s):

Easy_Company_36_35_B3IJ_Fed_Com_1H_Csg_Assumptions_20190918143344.pdf

Operator Name: MEWBOURNE OIL COMPANY

Well Name: EASY COMPANY 36/35 B3IJ FED COM

Well Number: 1H

Casing Attachments

Casing ID: 4String Type:PRODUCTION

Inspection Document:

Spec Document:

Tapered String Spec:

Casing Design Assumptions and Worksheet(s):
Easy_Company_36_35_B3IJ_Fed_Com_1H_Csg_Assumptions_20190918143444.pdf

Casing ID: 5String Type:LINER

Inspection Document:

Spec Document:

Tapered String Spec:

Casing Design Assumptions and Worksheet(s):
Easy_Company_36_35_B3IJ_Fed_Com_1H_Csg_Assumptions_20190918143543.pdf

Section 4 - Cement

| String Type | Lead/Tail | Stage Tool Depth | Top MD | Bottom MD | Quantity(sx) | Yield | Density | Cu Ft | Excess% | Cement type | Additives |
|--------------|-----------|------------------|--------|-----------|--------------|-------|---------|-------|---------|-------------|--------------------------|
| SURFACE | Lead | | 0 | 242 | 345 | 2.12 | 12.5 | 731 | 100 | Class C | Salt, Gel, Extender, LCM |
| SURFACE | Tail | | 242 | 330 | 200 | 1.34 | 14.8 | 268 | 100 | Class C | Retarder |
| INTERMEDIATE | Lead | | 0 | 1075 | 495 | 2.12 | 12.5 | 1049 | 25 | Class C | Salt, Gel, Extender, LCM |
| INTERMEDIATE | Tail | | 1075 | 1350 | 200 | 1.34 | 14.8 | 268 | 25 | Class C | Retarder |
| INTERMEDIATE | Lead | 1400 | 0 | 1117 | 250 | 2.12 | 12.5 | 530 | 25 | Class C | Salt, Gel, Extender, LCM |

Operator Name: MEWBOURNE OIL COMPANY

Well Name: EASY COMPANY 36/35 B3IJ FED COMWell Number: 1H

| String Type | Lead/Tail | Stage Tool Depth | Top MD | Bottom MD | Quantity(sx) | Yield | Density | Cu Ft | Excess% | Cement type | Additives |
|--------------|-----------|------------------|--------|-----------|--------------|-------|---------|-------|---------|-------------|--|
| INTERMEDIATE | Tail | | 1117 | 1400 | 100 | 1.34 | 14.8 | 134 | 25 | Class C | Retarder |
| INTERMEDIATE | Lead | 1400 | 1400 | 2335 | 175 | 2.12 | 12.5 | 371 | 25 | Class C | Salt, Gel, Extender, LCM |
| INTERMEDIATE | Tail | | 2335 | 3010 | 200 | 1.34 | 14.8 | 268 | 25 | Class C | Retarder |
| PRODUCTION | Lead | | 1400 | 6890 | 495 | 2.12 | 12.5 | 1049 | 25 | Class C | Gel, Retarder, Defoamer, Extender |
| PRODUCTION | Tail | | 6890 | 9360 | 400 | 1.18 | 15.6 | 472 | 25 | Class H | Retarder, Fluid Loss, Defoamer |
| LINER | Lead | | 8600 | 16705 | 330 | 2.97 | 11.2 | 980 | 25 | Class C | Salt, Gel, Fluid Loss, Retarder, Dispersant, Defoamer, Anti-Settling Agent |

Section 5 - Circulating Medium

Mud System Type: Closed

Will an air or gas system be Used? NO

Description of the equipment for the circulating system in accordance with Onshore Order #2:

Diagram of the equipment for the circulating system in accordance with Onshore Order #2:

Describe what will be on location to control well or mitigate other conditions: Lost circulation material Sweeps Mud scavengers in surface hole

Describe the mud monitoring system utilized: Visual Monitoring

Circulating Medium Table

| Top Depth | Bottom Depth | Mud Type | Min Weight (lbs/gal) | Max Weight (lbs/gal) | Density (lbs/cu ft) | Gel Strength (lbs/100 sqft) | PH | Viscosity (CP) | Salinity (ppm) | Filtration (cc) | Additional Characteristics |
|-----------|--------------|----------|----------------------|----------------------|---------------------|-----------------------------|----|----------------|----------------|-----------------|----------------------------|
| 0 | 330 | SPUD MUD | 8.6 | 8.8 | | | | | | | |

Operator Name: MEWBOURNE OIL COMPANY

Well Name: EASY COMPANY 36/35 B3IJ FED COM

Well Number: 1H

| Top Depth | Bottom Depth | Mud Type | Min Weight (lbs/gal) | Max Weight (lbs/gal) | Density (lbs/cu ft) | Gel Strength (lbs/100 sqft) | PH | Viscosity (CP) | Salinity (ppm) | Filtration (cc) | Additional Characteristics |
|-----------|--------------|-----------------|----------------------|----------------------|---------------------|-----------------------------|----|----------------|----------------|-----------------|----------------------------|
| 330 | 1350 | SALT SATURATED | 10 | 10 | | | | | | | |
| 1350 | 8880 | WATER-BASED MUD | 8.6 | 9.7 | | | | | | | |
| 8880 | 9074 | OIL-BASED MUD | 8.6 | 10 | | | | | | | |

Section 6 - Test, Logging, Coring

List of production tests including testing procedures, equipment and safety measures:

Will run GR/CNL in deeper offset Easy Company 36/35 W0IJ Fed Com #1H

List of open and cased hole logs run in the well:

COMPENSATED NEUTRON LOG,DIRECTIONAL SURVEY,GAMMA RAY LOG,MEASUREMENT WHILE DRILLING,MUD LOG/GEOLOGIC LITHOLOGY LOG,

Coring operation description for the well:

None

Section 7 - Pressure

Anticipated Bottom Hole Pressure: 4719

Anticipated Surface Pressure: 2750

Anticipated Bottom Hole Temperature(F): 140

Anticipated abnormal pressures, temperatures, or potential geologic hazards? NO

Describe:

Contingency Plans geoharzards description:

Contingency Plans geohazards attachment:

Hydrogen Sulfide drilling operations plan required? YES

Hydrogen sulfide drilling operations plan:

Easy_Company_36_35_B3IJ_Fed_Com_1H_H2S_Plan_20190918144851.pdf

Operator Name: MEWBOURNE OIL COMPANY

Well Name: EASY COMPANY 36/35 B3IJ FED COM

Well Number: 1H

Section 8 - Other Information

Proposed horizontal/directional/multi-lateral plan submission:

Easy_Company_36_35_B3IJ_Fed_Com_1H_Dir_Plot_20190918144925.pdf

Easy_Company_36_35_B3IJ_Fed_Com_1H_Dir_Plan_20190918144925.pdf

Other proposed operations facets description:

Other proposed operations facets attachment:

Easy_Company_36_35_B3IJ_Fed_Com_1H_Drlg_Program_20190918144943.doc

Easy_Company_36_35_B3IJ_Fed_Com_1H_Add_Info_20190918145236.pdf

Other Variance attachment:

Mewbourne Oil Company, Easy Company 36/35 B3IJ Fed Com #1H**Sec 36, T20S, R28E****SHL: 1330' FSL & 205' FEL, Sec 36****BHL: 1330' FSL & 2546' FEL, Sec 35****Casing Program**

| Hole Size | Casing Interval | | Csg. Size | Weight (lbs) | Grade | Conn. | SF Collapse | SF Burst | SF Jt Tension | SF Body Tension |
|---------------------------|-----------------|---------|-----------|--------------|--------|-------|-------------|----------|--------------------|--------------------|
| | From | To | | | | | | | | |
| 26" | 0' | 330' | 20" | 94 | J55 | BTC | 3.61 | 14.64 | 45.20 | 47.71 |
| 17.5" | 0' | 1350' | 13.375" | 48 | H40 | STC | 1.22 | 2.74 | 4.97 | 8.35 |
| 12.25" | 0' | 3010' | 9.625" | 36 | J55 | LTC | 1.27 | 2.20 | 4.10 | 5.10 |
| 8.75" | 0' | 9360' | 7" | 26 | HCP110 | LTC | 1.88 | 2.49 | 2.91 | 3.79 |
| 6.125" | 8600' | 16,705' | 4.5" | 13.5 | P110 | LTC | 2.52 | 2.93 | 2.33 | 2.91 |
| BLM Minimum Safety Factor | | | | | | | 1.125 | 1 | 1.6 Dry 1.8 Wet | 1.6 Dry 1.8 Wet |

All casing strings will be tested in accordance with Onshore Oil and Gas Order #2 III.B.1.h

Must have table for contingency casing

| | Y or N |
|--|--------|
| Is casing new? If used, attach certification as required in Onshore Order #1 | Y |
| Is casing API approved? If no, attach casing specification sheet. | Y |
| Is premium or uncommon casing planned? If yes attach casing specification sheet. | N |
| Does the above casing design meet or exceed BLM's minimum standards? If not provide justification (loading assumptions, casing design criteria). | Y |
| Will the pipe be kept at a minimum 1/3 fluid filled to avoid approaching the collapse pressure rating of the casing? | Y |
| Is well located within Capitan Reef? | Y |
| If yes, does production casing cement tie back a minimum of 50' above the Reef? | Y |
| Is well within the designated 4 string boundary. | Y |
| Is well located in SOPA but not in R-111-P? | N |
| If yes, are the first 2 strings cemented to surface and 3 rd string cement tied back 500' into previous casing? | |
| Is well located in R-111-P and SOPA? | N |
| If yes, are the first three strings cemented to surface? | |
| Is 2 nd string set 100' to 600' below the base of salt? | |
| Is well located in high Cave/Karst? | Y |
| If yes, are there two strings cemented to surface? | Y |
| (For 2 string wells) If yes, is there a contingency casing if lost circulation occurs? | |
| Is well located in critical Cave/Karst? | N |
| If yes, are there three strings cemented to surface? | |

Mewbourne Oil Company, Easy Company 36/35 B3IJ Fed Com #1H**Sec 36, T20S, R28E****SHL: 1330' FSL & 205' FEL, Sec 36****BHL: 1330' FSL & 2546' FEL, Sec 35****Casing Program**

| Hole Size | Casing Interval | | Csg. Size | Weight (lbs) | Grade | Conn. | SF Collapse | SF Burst | SF Jt Tension | SF Body Tension |
|---------------------------|-----------------|---------|-----------|--------------|--------|-------|-------------|----------|--------------------|--------------------|
| | From | To | | | | | | | | |
| 26" | 0' | 330' | 20" | 94 | J55 | BTC | 3.61 | 14.64 | 45.20 | 47.71 |
| 17.5" | 0' | 1350' | 13.375" | 48 | H40 | STC | 1.22 | 2.74 | 4.97 | 8.35 |
| 12.25" | 0' | 3010' | 9.625" | 36 | J55 | LTC | 1.27 | 2.20 | 4.10 | 5.10 |
| 8.75" | 0' | 9360' | 7" | 26 | HCP110 | LTC | 1.88 | 2.49 | 2.91 | 3.79 |
| 6.125" | 8600' | 16,705' | 4.5" | 13.5 | P110 | LTC | 2.52 | 2.93 | 2.33 | 2.91 |
| BLM Minimum Safety Factor | | | | | | | 1.125 | 1 | 1.6 Dry 1.8 Wet | 1.6 Dry 1.8 Wet |

All casing strings will be tested in accordance with Onshore Oil and Gas Order #2 III.B.1.h
Must have table for contingency casing

| | Y or N |
|--|--------|
| Is casing new? If used, attach certification as required in Onshore Order #1 | Y |
| Is casing API approved? If no, attach casing specification sheet. | Y |
| Is premium or uncommon casing planned? If yes attach casing specification sheet. | N |
| Does the above casing design meet or exceed BLM's minimum standards? If not provide justification (loading assumptions, casing design criteria). | Y |
| Will the pipe be kept at a minimum 1/3 fluid filled to avoid approaching the collapse pressure rating of the casing? | Y |
| Is well located within Capitan Reef? | Y |
| If yes, does production casing cement tie back a minimum of 50' above the Reef? | Y |
| Is well within the designated 4 string boundary. | Y |
| Is well located in SOPA but not in R-111-P? | N |
| If yes, are the first 2 strings cemented to surface and 3 rd string cement tied back 500' into previous casing? | |
| Is well located in R-111-P and SOPA? | N |
| If yes, are the first three strings cemented to surface? | |
| Is 2 nd string set 100' to 600' below the base of salt? | |
| Is well located in high Cave/Karst? | Y |
| If yes, are there two strings cemented to surface? | Y |
| (For 2 string wells) If yes, is there a contingency casing if lost circulation occurs? | |
| Is well located in critical Cave/Karst? | N |
| If yes, are there three strings cemented to surface? | |

Mewbourne Oil Company, Easy Company 36/35 B3IJ Fed Com #1H**Sec 36, T20S, R28E****SHL: 1330' FSL & 205' FEL, Sec 36****BHL: 1330' FSL & 2546' FEL, Sec 35****Casing Program**

| Hole Size | Casing Interval | | Csg. Size | Weight (lbs) | Grade | Conn. | SF Collapse | SF Burst | SF Jt Tension | SF Body Tension |
|---------------------------|-----------------|---------|-----------|--------------|--------|-------|-------------|----------|--------------------|--------------------|
| | From | To | | | | | | | | |
| 26" | 0' | 330' | 20" | 94 | J55 | BTC | 3.61 | 14.64 | 45.20 | 47.71 |
| 17.5" | 0' | 1350' | 13.375" | 48 | H40 | STC | 1.22 | 2.74 | 4.97 | 8.35 |
| 12.25" | 0' | 3010' | 9.625" | 36 | J55 | LTC | 1.27 | 2.20 | 4.10 | 5.10 |
| 8.75" | 0' | 9360' | 7" | 26 | HCP110 | LTC | 1.88 | 2.49 | 2.91 | 3.79 |
| 6.125" | 8600' | 16,705' | 4.5" | 13.5 | P110 | LTC | 2.52 | 2.93 | 2.33 | 2.91 |
| BLM Minimum Safety Factor | | | | | | | 1.125 | 1 | 1.6 Dry 1.8 Wet | 1.6 Dry 1.8 Wet |

All casing strings will be tested in accordance with Onshore Oil and Gas Order #2 III.B.1.h
Must have table for contingency casing

| | Y or N |
|--|--------|
| Is casing new? If used, attach certification as required in Onshore Order #1 | Y |
| Is casing API approved? If no, attach casing specification sheet. | Y |
| Is premium or uncommon casing planned? If yes attach casing specification sheet. | N |
| Does the above casing design meet or exceed BLM's minimum standards? If not provide justification (loading assumptions, casing design criteria). | Y |
| Will the pipe be kept at a minimum 1/3 fluid filled to avoid approaching the collapse pressure rating of the casing? | Y |
| Is well located within Capitan Reef? | Y |
| If yes, does production casing cement tie back a minimum of 50' above the Reef? | Y |
| Is well within the designated 4 string boundary. | Y |
| Is well located in SOPA but not in R-111-P? | N |
| If yes, are the first 2 strings cemented to surface and 3 rd string cement tied back 500' into previous casing? | |
| Is well located in R-111-P and SOPA? | N |
| If yes, are the first three strings cemented to surface? | |
| Is 2 nd string set 100' to 600' below the base of salt? | |
| Is well located in high Cave/Karst? | Y |
| If yes, are there two strings cemented to surface? | Y |
| (For 2 string wells) If yes, is there a contingency casing if lost circulation occurs? | |
| Is well located in critical Cave/Karst? | N |
| If yes, are there three strings cemented to surface? | |

Mewbourne Oil Company, Easy Company 36/35 B3IJ Fed Com #1H**Sec 36, T20S, R28E****SHL: 1330' FSL & 205' FEL, Sec 36****BHL: 1330' FSL & 2546' FEL, Sec 35****Casing Program**

| Hole Size | Casing Interval | | Csg. Size | Weight (lbs) | Grade | Conn. | SF Collapse | SF Burst | SF Jt Tension | SF Body Tension |
|---------------------------|-----------------|---------|-----------|--------------|--------|-------|-------------|----------|--------------------|--------------------|
| | From | To | | | | | | | | |
| 26" | 0' | 330' | 20" | 94 | J55 | BTC | 3.61 | 14.64 | 45.20 | 47.71 |
| 17.5" | 0' | 1350' | 13.375" | 48 | H40 | STC | 1.22 | 2.74 | 4.97 | 8.35 |
| 12.25" | 0' | 3010' | 9.625" | 36 | J55 | LTC | 1.27 | 2.20 | 4.10 | 5.10 |
| 8.75" | 0' | 9360' | 7" | 26 | HCP110 | LTC | 1.88 | 2.49 | 2.91 | 3.79 |
| 6.125" | 8600' | 16,705' | 4.5" | 13.5 | P110 | LTC | 2.52 | 2.93 | 2.33 | 2.91 |
| BLM Minimum Safety Factor | | | | | | | 1.125 | 1 | 1.6 Dry 1.8 Wet | 1.6 Dry 1.8 Wet |

All casing strings will be tested in accordance with Onshore Oil and Gas Order #2 III.B.1.h
Must have table for contingency casing

| | Y or N |
|--|--------|
| Is casing new? If used, attach certification as required in Onshore Order #1 | Y |
| Is casing API approved? If no, attach casing specification sheet. | Y |
| Is premium or uncommon casing planned? If yes attach casing specification sheet. | N |
| Does the above casing design meet or exceed BLM's minimum standards? If not provide justification (loading assumptions, casing design criteria). | Y |
| Will the pipe be kept at a minimum 1/3 fluid filled to avoid approaching the collapse pressure rating of the casing? | Y |
| Is well located within Capitan Reef? | Y |
| If yes, does production casing cement tie back a minimum of 50' above the Reef? | Y |
| Is well within the designated 4 string boundary. | Y |
| Is well located in SOPA but not in R-111-P? | N |
| If yes, are the first 2 strings cemented to surface and 3 rd string cement tied back 500' into previous casing? | |
| Is well located in R-111-P and SOPA? | N |
| If yes, are the first three strings cemented to surface? | |
| Is 2 nd string set 100' to 600' below the base of salt? | |
| Is well located in high Cave/Karst? | Y |
| If yes, are there two strings cemented to surface? | Y |
| (For 2 string wells) If yes, is there a contingency casing if lost circulation occurs? | |
| Is well located in critical Cave/Karst? | N |
| If yes, are there three strings cemented to surface? | |

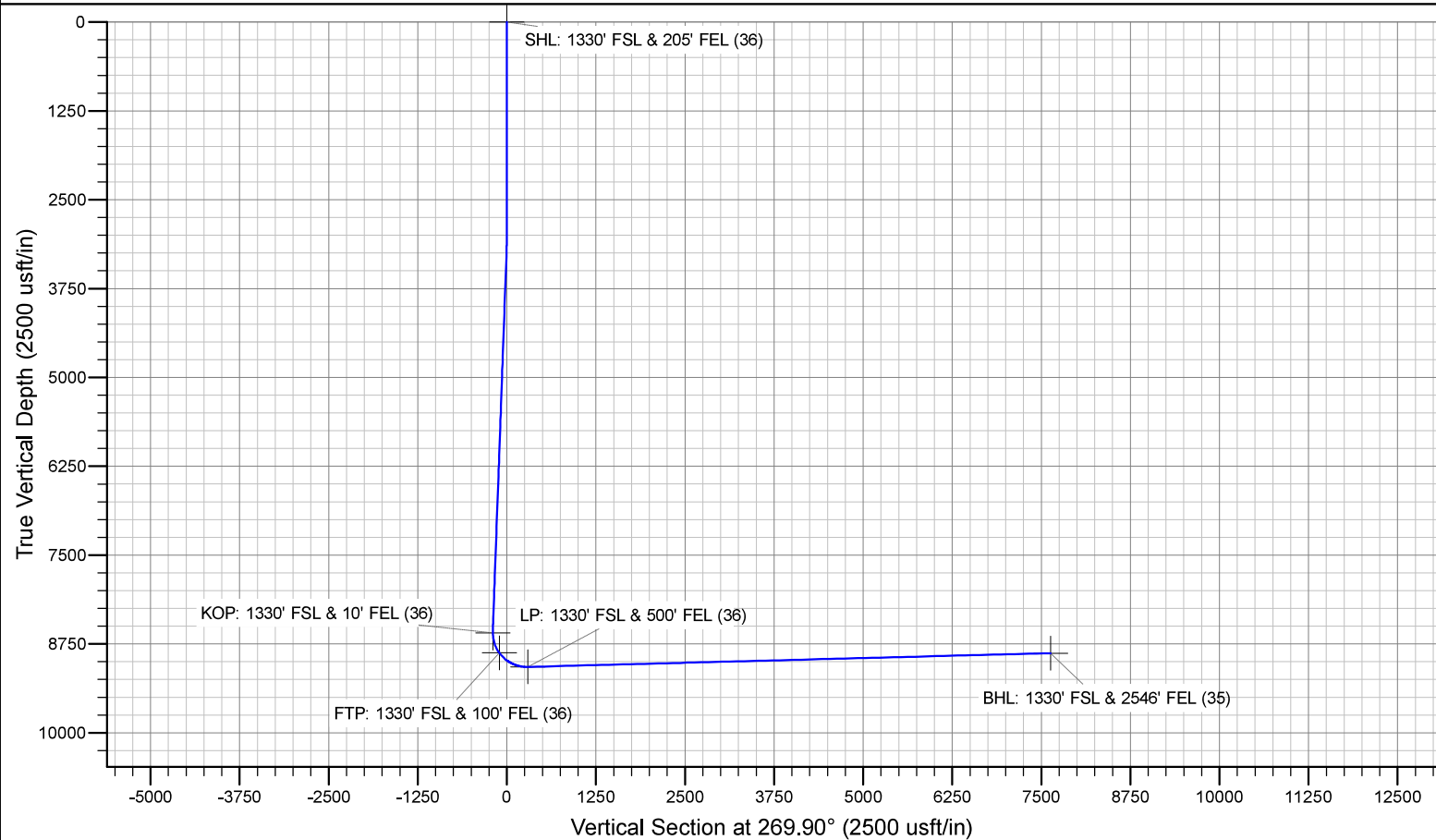
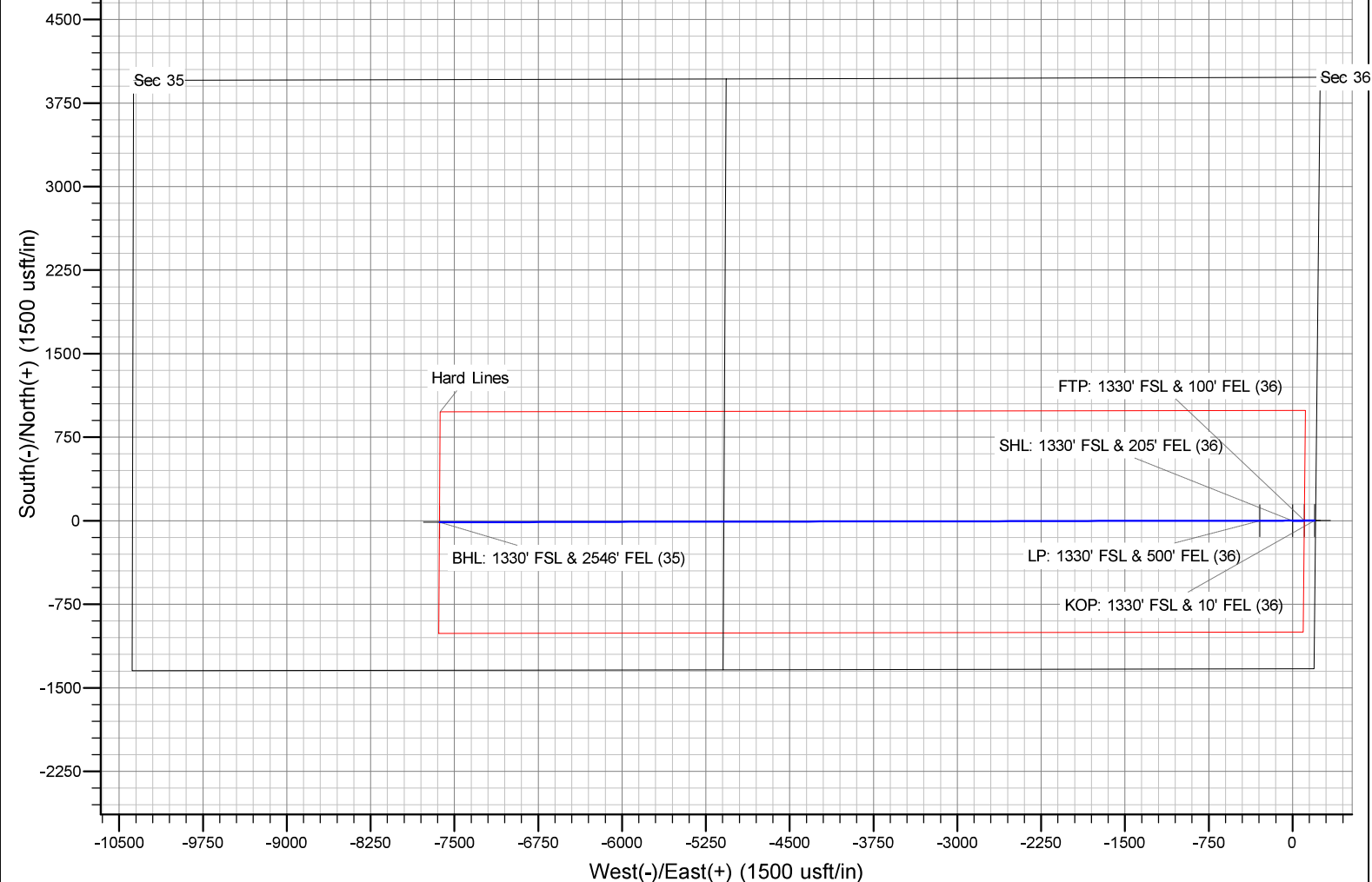
Mewbourne Oil Company, Easy Company 36/35 B3IJ Fed Com #1H**Sec 36, T20S, R28E****SHL: 1330' FSL & 205' FEL, Sec 36****BHL: 1330' FSL & 2546' FEL, Sec 35****Casing Program**

| Hole Size | Casing Interval | | Csg. Size | Weight (lbs) | Grade | Conn. | SF Collapse | SF Burst | SF Jt Tension | SF Body Tension |
|---------------------------|-----------------|---------|-----------|--------------|--------|-------|-------------|----------|--------------------|--------------------|
| | From | To | | | | | | | | |
| 26" | 0' | 330' | 20" | 94 | J55 | BTC | 3.61 | 14.64 | 45.20 | 47.71 |
| 17.5" | 0' | 1350' | 13.375" | 48 | H40 | STC | 1.22 | 2.74 | 4.97 | 8.35 |
| 12.25" | 0' | 3010' | 9.625" | 36 | J55 | LTC | 1.27 | 2.20 | 4.10 | 5.10 |
| 8.75" | 0' | 9360' | 7" | 26 | HCP110 | LTC | 1.88 | 2.49 | 2.91 | 3.79 |
| 6.125" | 8600' | 16,705' | 4.5" | 13.5 | P110 | LTC | 2.52 | 2.93 | 2.33 | 2.91 |
| BLM Minimum Safety Factor | | | | | | | 1.125 | 1 | 1.6 Dry 1.8 Wet | 1.6 Dry 1.8 Wet |

All casing strings will be tested in accordance with Onshore Oil and Gas Order #2 III.B.1.h
Must have table for contingency casing

| | Y or N |
|--|--------|
| Is casing new? If used, attach certification as required in Onshore Order #1 | Y |
| Is casing API approved? If no, attach casing specification sheet. | Y |
| Is premium or uncommon casing planned? If yes attach casing specification sheet. | N |
| Does the above casing design meet or exceed BLM's minimum standards? If not provide justification (loading assumptions, casing design criteria). | Y |
| Will the pipe be kept at a minimum 1/3 fluid filled to avoid approaching the collapse pressure rating of the casing? | Y |
| Is well located within Capitan Reef? | Y |
| If yes, does production casing cement tie back a minimum of 50' above the Reef? | Y |
| Is well within the designated 4 string boundary. | Y |
| Is well located in SOPA but not in R-111-P? | N |
| If yes, are the first 2 strings cemented to surface and 3 rd string cement tied back 500' into previous casing? | |
| Is well located in R-111-P and SOPA? | N |
| If yes, are the first three strings cemented to surface? | |
| Is 2 nd string set 100' to 600' below the base of salt? | |
| Is well located in high Cave/Karst? | Y |
| If yes, are there two strings cemented to surface? | Y |
| (For 2 string wells) If yes, is there a contingency casing if lost circulation occurs? | |
| Is well located in critical Cave/Karst? | N |
| If yes, are there three strings cemented to surface? | |

Easy Company 36/35 B3IJ Fed Com #1H



Mewbourne Oil Company

Eddy County, New Mexico NAD 83

Easy Company 36/35 B3IJ Fed Com #1H

Sec 36, T20S, R28E

SHL: 1330' FSL & 205' FEL, Sec 36

BHL: 1330' FSL & 2546' FEL, Sec 35

Plan: Design #1

Standard Planning Report

26 July, 2019

Planning Report

| | | | |
|------------------|-------------------------------------|-------------------------------------|--|
| Database: | Hobbs | Local Co-ordinate Reference: | Site Easy Company 36/35 B3IJ Fed Com #1H |
| Company: | Mewbourne Oil Company | TVD Reference: | WELL @ 3256.0usft (Original Well Elev) |
| Project: | Eddy County, New Mexico NAD 83 | MD Reference: | WELL @ 3256.0usft (Original Well Elev) |
| Site: | Easy Company 36/35 B3IJ Fed Com #1H | North Reference: | Grid |
| Well: | Sec 36, T20S, R28E | Survey Calculation Method: | Minimum Curvature |
| Wellbore: | BHL: 1330' FSL & 2546' FEL, Sec 35 | | |
| Design: | Design #1 | | |

| | | | |
|--------------------|--------------------------------|----------------------|----------------|
| Project | Eddy County, New Mexico NAD 83 | | |
| Map System: | US State Plane 1983 | System Datum: | Mean Sea Level |
| Geo Datum: | North American Datum 1983 | | |
| Map Zone: | New Mexico Eastern Zone | | |

| | | | | |
|------------------------------|-------------------------------------|---------------------|-----------------|---------------------------------|
| Site | Easy Company 36/35 B3IJ Fed Com #1H | | | |
| Site Position: | | Northing: | 555,275.00 usft | Latitude: 32.5263349 |
| From: | Map | Easting: | 606,003.00 usft | Longitude: -104.1235197 |
| Position Uncertainty: | 0.0 usft | Slot Radius: | 13-3/16 " | Grid Convergence: 0.11 ° |

| | | | | |
|-----------------------------|--------------------|----------|----------------------------|-----------------|
| Well | Sec 36, T20S, R28E | | | |
| Well Position | +N/-S | 0.0 usft | Northing: | 555,275.00 usft |
| | +E/-W | 0.0 usft | Easting: | 606,003.00 usft |
| Position Uncertainty | 0.0 usft | | Wellhead Elevation: | 3,256.0 usft |
| | | | Ground Level: | 3,229.0 usft |

| | | | | | |
|------------------|------------------------------------|--------------------|------------------------|----------------------|----------------------------|
| Wellbore | BHL: 1330' FSL & 2546' FEL, Sec 35 | | | | |
| Magnetics | Model Name | Sample Date | Declination (°) | Dip Angle (°) | Field Strength (nT) |
| | IGRF2010 | 7/24/2019 | 6.86 | 60.17 | 47,932 |

| | | | | |
|--------------------------|--------------------------------|---------------------|----------------------|----------------------|
| Design | Design #1 | | | |
| Audit Notes: | | | | |
| Version: | Phase: | PROTOTYPE | Tie On Depth: | 0.0 |
| Vertical Section: | Depth From (TVD) (usft) | +N/-S (usft) | +E/-W (usft) | Direction (°) |
| | 0.0 | 0.0 | 0.0 | 269.90 |

| Plan Sections | | | | | | | | | | |
|-----------------------|-----------------|-------------|-----------------------|--------------|--------------|-------------------------|------------------------|-----------------------|---------|------------------------|
| Measured Depth (usft) | Inclination (°) | Azimuth (°) | Vertical Depth (usft) | +N/-S (usft) | +E/-W (usft) | Dogleg Rate (°/100usft) | Build Rate (°/100usft) | Turn Rate (°/100usft) | TFO (°) | Target |
| 0.0 | 0.00 | 0.00 | 0.0 | 0.0 | 0.0 | 0.00 | 0.00 | 0.00 | 0.00 | |
| 3,085.0 | 0.00 | 0.00 | 3,085.0 | 0.0 | 0.0 | 0.00 | 0.00 | 0.00 | 0.00 | |
| 3,223.6 | 2.08 | 89.71 | 3,223.5 | 0.0 | 2.5 | 1.50 | 1.50 | 0.00 | 89.71 | |
| 8,461.5 | 2.08 | 89.71 | 8,458.0 | 1.0 | 192.5 | 0.00 | 0.00 | 0.00 | 0.00 | |
| 8,600.0 | 0.00 | 0.00 | 8,596.5 | 1.0 | 195.0 | 1.50 | -1.50 | 0.00 | 180.00 | KOP: 1330' FSL & 10' |
| 9,362.9 | 91.51 | 269.90 | 9,074.0 | 0.1 | -295.2 | 12.00 | 12.00 | 0.00 | -90.10 | |
| 16,704.3 | 91.51 | 269.90 | 8,880.0 | -13.0 | -7,634.0 | 0.00 | 0.00 | 0.00 | 0.00 | BHL: 1330' FSL & 2546' |

Planning Report

| | | | |
|------------------|-------------------------------------|-------------------------------------|--|
| Database: | Hobbs | Local Co-ordinate Reference: | Site Easy Company 36/35 B3IJ Fed Com #1H |
| Company: | Mewbourne Oil Company | TVD Reference: | WELL @ 3256.0usft (Original Well Elev) |
| Project: | Eddy County, New Mexico NAD 83 | MD Reference: | WELL @ 3256.0usft (Original Well Elev) |
| Site: | Easy Company 36/35 B3IJ Fed Com #1H | North Reference: | Grid |
| Well: | Sec 36, T20S, R28E | Survey Calculation Method: | Minimum Curvature |
| Wellbore: | BHL: 1330' FSL & 2546' FEL, Sec 35 | | |
| Design: | Design #1 | | |

| Planned Survey | | | | | | | | | |
|--------------------------------|-----------------|-------------|-----------------------|--------------|--------------|-------------------------|-------------------------|------------------------|-----------------------|
| Measured Depth (usft) | Inclination (°) | Azimuth (°) | Vertical Depth (usft) | +N/-S (usft) | +E/-W (usft) | Vertical Section (usft) | Dogleg Rate (°/100usft) | Build Rate (°/100usft) | Turn Rate (°/100usft) |
| 0.0 | 0.00 | 0.00 | 0.0 | 0.0 | 0.0 | 0.0 | 0.00 | 0.00 | 0.00 |
| SHL: 1330' FSL & 205' FEL (36) | | | | | | | | | |
| 100.0 | 0.00 | 0.00 | 100.0 | 0.0 | 0.0 | 0.0 | 0.00 | 0.00 | 0.00 |
| 200.0 | 0.00 | 0.00 | 200.0 | 0.0 | 0.0 | 0.0 | 0.00 | 0.00 | 0.00 |
| 300.0 | 0.00 | 0.00 | 300.0 | 0.0 | 0.0 | 0.0 | 0.00 | 0.00 | 0.00 |
| 400.0 | 0.00 | 0.00 | 400.0 | 0.0 | 0.0 | 0.0 | 0.00 | 0.00 | 0.00 |
| 500.0 | 0.00 | 0.00 | 500.0 | 0.0 | 0.0 | 0.0 | 0.00 | 0.00 | 0.00 |
| 600.0 | 0.00 | 0.00 | 600.0 | 0.0 | 0.0 | 0.0 | 0.00 | 0.00 | 0.00 |
| 700.0 | 0.00 | 0.00 | 700.0 | 0.0 | 0.0 | 0.0 | 0.00 | 0.00 | 0.00 |
| 800.0 | 0.00 | 0.00 | 800.0 | 0.0 | 0.0 | 0.0 | 0.00 | 0.00 | 0.00 |
| 900.0 | 0.00 | 0.00 | 900.0 | 0.0 | 0.0 | 0.0 | 0.00 | 0.00 | 0.00 |
| 1,000.0 | 0.00 | 0.00 | 1,000.0 | 0.0 | 0.0 | 0.0 | 0.00 | 0.00 | 0.00 |
| 1,100.0 | 0.00 | 0.00 | 1,100.0 | 0.0 | 0.0 | 0.0 | 0.00 | 0.00 | 0.00 |
| 1,200.0 | 0.00 | 0.00 | 1,200.0 | 0.0 | 0.0 | 0.0 | 0.00 | 0.00 | 0.00 |
| 1,300.0 | 0.00 | 0.00 | 1,300.0 | 0.0 | 0.0 | 0.0 | 0.00 | 0.00 | 0.00 |
| 1,400.0 | 0.00 | 0.00 | 1,400.0 | 0.0 | 0.0 | 0.0 | 0.00 | 0.00 | 0.00 |
| 1,500.0 | 0.00 | 0.00 | 1,500.0 | 0.0 | 0.0 | 0.0 | 0.00 | 0.00 | 0.00 |
| 1,600.0 | 0.00 | 0.00 | 1,600.0 | 0.0 | 0.0 | 0.0 | 0.00 | 0.00 | 0.00 |
| 1,700.0 | 0.00 | 0.00 | 1,700.0 | 0.0 | 0.0 | 0.0 | 0.00 | 0.00 | 0.00 |
| 1,800.0 | 0.00 | 0.00 | 1,800.0 | 0.0 | 0.0 | 0.0 | 0.00 | 0.00 | 0.00 |
| 1,900.0 | 0.00 | 0.00 | 1,900.0 | 0.0 | 0.0 | 0.0 | 0.00 | 0.00 | 0.00 |
| 2,000.0 | 0.00 | 0.00 | 2,000.0 | 0.0 | 0.0 | 0.0 | 0.00 | 0.00 | 0.00 |
| 2,100.0 | 0.00 | 0.00 | 2,100.0 | 0.0 | 0.0 | 0.0 | 0.00 | 0.00 | 0.00 |
| 2,200.0 | 0.00 | 0.00 | 2,200.0 | 0.0 | 0.0 | 0.0 | 0.00 | 0.00 | 0.00 |
| 2,300.0 | 0.00 | 0.00 | 2,300.0 | 0.0 | 0.0 | 0.0 | 0.00 | 0.00 | 0.00 |
| 2,400.0 | 0.00 | 0.00 | 2,400.0 | 0.0 | 0.0 | 0.0 | 0.00 | 0.00 | 0.00 |
| 2,500.0 | 0.00 | 0.00 | 2,500.0 | 0.0 | 0.0 | 0.0 | 0.00 | 0.00 | 0.00 |
| 2,600.0 | 0.00 | 0.00 | 2,600.0 | 0.0 | 0.0 | 0.0 | 0.00 | 0.00 | 0.00 |
| 2,700.0 | 0.00 | 0.00 | 2,700.0 | 0.0 | 0.0 | 0.0 | 0.00 | 0.00 | 0.00 |
| 2,800.0 | 0.00 | 0.00 | 2,800.0 | 0.0 | 0.0 | 0.0 | 0.00 | 0.00 | 0.00 |
| 2,900.0 | 0.00 | 0.00 | 2,900.0 | 0.0 | 0.0 | 0.0 | 0.00 | 0.00 | 0.00 |
| 3,000.0 | 0.00 | 0.00 | 3,000.0 | 0.0 | 0.0 | 0.0 | 0.00 | 0.00 | 0.00 |
| 3,085.0 | 0.00 | 0.00 | 3,085.0 | 0.0 | 0.0 | 0.0 | 0.00 | 0.00 | 0.00 |
| 3,100.0 | 0.23 | 89.71 | 3,100.0 | 0.0 | 0.0 | 0.0 | 1.50 | 1.50 | 0.00 |
| 3,200.0 | 1.73 | 89.71 | 3,200.0 | 0.0 | 1.7 | -1.7 | 1.50 | 1.50 | 0.00 |
| 3,223.6 | 2.08 | 89.71 | 3,223.5 | 0.0 | 2.5 | -2.5 | 1.50 | 1.50 | 0.00 |
| 3,300.0 | 2.08 | 89.71 | 3,299.9 | 0.0 | 5.3 | -5.3 | 0.00 | 0.00 | 0.00 |
| 3,400.0 | 2.08 | 89.71 | 3,399.9 | 0.0 | 8.9 | -8.9 | 0.00 | 0.00 | 0.00 |
| 3,500.0 | 2.08 | 89.71 | 3,499.8 | 0.1 | 12.5 | -12.5 | 0.00 | 0.00 | 0.00 |
| 3,600.0 | 2.08 | 89.71 | 3,599.7 | 0.1 | 16.2 | -16.2 | 0.00 | 0.00 | 0.00 |
| 3,700.0 | 2.08 | 89.71 | 3,699.7 | 0.1 | 19.8 | -19.8 | 0.00 | 0.00 | 0.00 |
| 3,800.0 | 2.08 | 89.71 | 3,799.6 | 0.1 | 23.4 | -23.4 | 0.00 | 0.00 | 0.00 |
| 3,900.0 | 2.08 | 89.71 | 3,899.5 | 0.1 | 27.0 | -27.0 | 0.00 | 0.00 | 0.00 |
| 4,000.0 | 2.08 | 89.71 | 3,999.5 | 0.2 | 30.7 | -30.7 | 0.00 | 0.00 | 0.00 |
| 4,100.0 | 2.08 | 89.71 | 4,099.4 | 0.2 | 34.3 | -34.3 | 0.00 | 0.00 | 0.00 |
| 4,200.0 | 2.08 | 89.71 | 4,199.3 | 0.2 | 37.9 | -37.9 | 0.00 | 0.00 | 0.00 |
| 4,300.0 | 2.08 | 89.71 | 4,299.3 | 0.2 | 41.6 | -41.6 | 0.00 | 0.00 | 0.00 |
| 4,400.0 | 2.08 | 89.71 | 4,399.2 | 0.2 | 45.2 | -45.2 | 0.00 | 0.00 | 0.00 |
| 4,500.0 | 2.08 | 89.71 | 4,499.1 | 0.3 | 48.8 | -48.8 | 0.00 | 0.00 | 0.00 |
| 4,600.0 | 2.08 | 89.71 | 4,599.1 | 0.3 | 52.4 | -52.4 | 0.00 | 0.00 | 0.00 |
| 4,700.0 | 2.08 | 89.71 | 4,699.0 | 0.3 | 56.1 | -56.1 | 0.00 | 0.00 | 0.00 |
| 4,800.0 | 2.08 | 89.71 | 4,798.9 | 0.3 | 59.7 | -59.7 | 0.00 | 0.00 | 0.00 |
| 4,900.0 | 2.08 | 89.71 | 4,898.9 | 0.3 | 63.3 | -63.3 | 0.00 | 0.00 | 0.00 |
| 5,000.0 | 2.08 | 89.71 | 4,998.8 | 0.3 | 66.9 | -66.9 | 0.00 | 0.00 | 0.00 |

Planning Report

| | | | |
|------------------|-------------------------------------|-------------------------------------|--|
| Database: | Hobbs | Local Co-ordinate Reference: | Site Easy Company 36/35 B3IJ Fed Com #1H |
| Company: | Mewbourne Oil Company | TVD Reference: | WELL @ 3256.0usft (Original Well Elev) |
| Project: | Eddy County, New Mexico NAD 83 | MD Reference: | WELL @ 3256.0usft (Original Well Elev) |
| Site: | Easy Company 36/35 B3IJ Fed Com #1H | North Reference: | Grid |
| Well: | Sec 36, T20S, R28E | Survey Calculation Method: | Minimum Curvature |
| Wellbore: | BHL: 1330' FSL & 2546' FEL, Sec 35 | | |
| Design: | Design #1 | | |

| Planned Survey | | | | | | | | | | |
|--------------------------------|--------------------|----------------|-----------------------------|-----------------|-----------------|-------------------------------|-------------------------------|------------------------------|-----------------------------|--|
| Measured Depth (usft) | Inclination (°) | Azimuth (°) | Vertical Depth (usft) | +N/-S (usft) | +E/-W (usft) | Vertical Section (usft) | Dogleg Rate (°/100usft) | Build Rate (°/100usft) | Turn Rate (°/100usft) | |
| 5,100.0 | 2.08 | 89.71 | 5,098.7 | 0.4 | 70.6 | -70.6 | 0.00 | 0.00 | 0.00 | |
| 5,200.0 | 2.08 | 89.71 | 5,198.7 | 0.4 | 74.2 | -74.2 | 0.00 | 0.00 | 0.00 | |
| 5,300.0 | 2.08 | 89.71 | 5,298.6 | 0.4 | 77.8 | -77.8 | 0.00 | 0.00 | 0.00 | |
| 5,400.0 | 2.08 | 89.71 | 5,398.5 | 0.4 | 81.5 | -81.5 | 0.00 | 0.00 | 0.00 | |
| 5,500.0 | 2.08 | 89.71 | 5,498.5 | 0.4 | 85.1 | -85.1 | 0.00 | 0.00 | 0.00 | |
| 5,600.0 | 2.08 | 89.71 | 5,598.4 | 0.5 | 88.7 | -88.7 | 0.00 | 0.00 | 0.00 | |
| 5,700.0 | 2.08 | 89.71 | 5,698.3 | 0.5 | 92.3 | -92.3 | 0.00 | 0.00 | 0.00 | |
| 5,800.0 | 2.08 | 89.71 | 5,798.3 | 0.5 | 96.0 | -96.0 | 0.00 | 0.00 | 0.00 | |
| 5,900.0 | 2.08 | 89.71 | 5,898.2 | 0.5 | 99.6 | -99.6 | 0.00 | 0.00 | 0.00 | |
| 6,000.0 | 2.08 | 89.71 | 5,998.1 | 0.5 | 103.2 | -103.2 | 0.00 | 0.00 | 0.00 | |
| 6,100.0 | 2.08 | 89.71 | 6,098.1 | 0.5 | 106.8 | -106.8 | 0.00 | 0.00 | 0.00 | |
| 6,200.0 | 2.08 | 89.71 | 6,198.0 | 0.6 | 110.5 | -110.5 | 0.00 | 0.00 | 0.00 | |
| 6,300.0 | 2.08 | 89.71 | 6,297.9 | 0.6 | 114.1 | -114.1 | 0.00 | 0.00 | 0.00 | |
| 6,400.0 | 2.08 | 89.71 | 6,397.9 | 0.6 | 117.7 | -117.7 | 0.00 | 0.00 | 0.00 | |
| 6,500.0 | 2.08 | 89.71 | 6,497.8 | 0.6 | 121.3 | -121.3 | 0.00 | 0.00 | 0.00 | |
| 6,600.0 | 2.08 | 89.71 | 6,597.7 | 0.6 | 125.0 | -125.0 | 0.00 | 0.00 | 0.00 | |
| 6,700.0 | 2.08 | 89.71 | 6,697.7 | 0.7 | 128.6 | -128.6 | 0.00 | 0.00 | 0.00 | |
| 6,800.0 | 2.08 | 89.71 | 6,797.6 | 0.7 | 132.2 | -132.2 | 0.00 | 0.00 | 0.00 | |
| 6,900.0 | 2.08 | 89.71 | 6,897.6 | 0.7 | 135.9 | -135.9 | 0.00 | 0.00 | 0.00 | |
| 7,000.0 | 2.08 | 89.71 | 6,997.5 | 0.7 | 139.5 | -139.5 | 0.00 | 0.00 | 0.00 | |
| 7,100.0 | 2.08 | 89.71 | 7,097.4 | 0.7 | 143.1 | -143.1 | 0.00 | 0.00 | 0.00 | |
| 7,200.0 | 2.08 | 89.71 | 7,197.4 | 0.8 | 146.7 | -146.7 | 0.00 | 0.00 | 0.00 | |
| 7,300.0 | 2.08 | 89.71 | 7,297.3 | 0.8 | 150.4 | -150.4 | 0.00 | 0.00 | 0.00 | |
| 7,400.0 | 2.08 | 89.71 | 7,397.2 | 0.8 | 154.0 | -154.0 | 0.00 | 0.00 | 0.00 | |
| 7,500.0 | 2.08 | 89.71 | 7,497.2 | 0.8 | 157.6 | -157.6 | 0.00 | 0.00 | 0.00 | |
| 7,600.0 | 2.08 | 89.71 | 7,597.1 | 0.8 | 161.2 | -161.2 | 0.00 | 0.00 | 0.00 | |
| 7,700.0 | 2.08 | 89.71 | 7,697.0 | 0.8 | 164.9 | -164.9 | 0.00 | 0.00 | 0.00 | |
| 7,800.0 | 2.08 | 89.71 | 7,797.0 | 0.9 | 168.5 | -168.5 | 0.00 | 0.00 | 0.00 | |
| 7,900.0 | 2.08 | 89.71 | 7,896.9 | 0.9 | 172.1 | -172.1 | 0.00 | 0.00 | 0.00 | |
| 8,000.0 | 2.08 | 89.71 | 7,996.8 | 0.9 | 175.7 | -175.8 | 0.00 | 0.00 | 0.00 | |
| 8,100.0 | 2.08 | 89.71 | 8,096.8 | 0.9 | 179.4 | -179.4 | 0.00 | 0.00 | 0.00 | |
| 8,200.0 | 2.08 | 89.71 | 8,196.7 | 0.9 | 183.0 | -183.0 | 0.00 | 0.00 | 0.00 | |
| 8,300.0 | 2.08 | 89.71 | 8,296.6 | 1.0 | 186.6 | -186.6 | 0.00 | 0.00 | 0.00 | |
| 8,400.0 | 2.08 | 89.71 | 8,396.6 | 1.0 | 190.3 | -190.3 | 0.00 | 0.00 | 0.00 | |
| 8,461.5 | 2.08 | 89.71 | 8,458.0 | 1.0 | 192.5 | -192.5 | 0.00 | 0.00 | 0.00 | |
| 8,500.0 | 1.50 | 89.71 | 8,496.5 | 1.0 | 193.7 | -193.7 | 1.50 | -1.50 | 0.00 | |
| 8,600.0 | 0.00 | 0.00 | 8,596.5 | 1.0 | 195.0 | -195.0 | 1.50 | -1.50 | 0.00 | |
| KOP: 1330' FSL & 10' FEL (36) | | | | | | | | | | |
| 8,700.0 | 11.99 | 269.90 | 8,695.8 | 1.0 | 184.6 | -184.6 | 12.00 | 12.00 | 0.00 | |
| 8,800.0 | 23.99 | 269.90 | 8,790.7 | 0.9 | 153.8 | -153.8 | 12.00 | 12.00 | 0.00 | |
| 8,898.1 | 35.75 | 269.90 | 8,875.6 | 0.8 | 105.0 | -105.0 | 12.00 | 12.00 | 0.00 | |
| FTP: 1330' FSL & 100' FEL (36) | | | | | | | | | | |
| 8,900.0 | 35.98 | 269.90 | 8,877.2 | 0.8 | 103.9 | -103.9 | 12.00 | 12.00 | 0.00 | |
| 9,000.0 | 47.98 | 269.90 | 8,951.4 | 0.7 | 37.1 | -37.1 | 12.00 | 12.00 | 0.00 | |
| 9,100.0 | 59.97 | 269.90 | 9,010.1 | 0.6 | -43.6 | 43.6 | 12.00 | 12.00 | 0.00 | |
| 9,200.0 | 71.97 | 269.90 | 9,050.7 | 0.4 | -134.8 | 134.8 | 12.00 | 12.00 | 0.00 | |
| 9,300.0 | 83.97 | 269.90 | 9,071.5 | 0.2 | -232.4 | 232.4 | 12.00 | 12.00 | 0.00 | |
| 9,362.9 | 91.51 | 269.90 | 9,074.0 | 0.1 | -295.2 | 295.2 | 12.00 | 12.00 | 0.00 | |
| LP: 1330' FSL & 500' FEL (36) | | | | | | | | | | |
| 9,400.0 | 91.51 | 269.90 | 9,073.0 | 0.1 | -332.3 | 332.3 | 0.02 | 0.02 | 0.00 | |
| 9,500.0 | 91.51 | 269.90 | 9,070.4 | -0.1 | -432.3 | 432.3 | 0.00 | 0.00 | 0.00 | |
| 9,600.0 | 91.51 | 269.90 | 9,067.7 | -0.3 | -532.2 | 532.2 | 0.00 | 0.00 | 0.00 | |
| 9,700.0 | 91.51 | 269.90 | 9,065.1 | -0.5 | -632.2 | 632.2 | 0.00 | 0.00 | 0.00 | |

Planning Report

| | | | |
|------------------|-------------------------------------|-------------------------------------|--|
| Database: | Hobbs | Local Co-ordinate Reference: | Site Easy Company 36/35 B3IJ Fed Com #1H |
| Company: | Mewbourne Oil Company | TVD Reference: | WELL @ 3256.0usft (Original Well Elev) |
| Project: | Eddy County, New Mexico NAD 83 | MD Reference: | WELL @ 3256.0usft (Original Well Elev) |
| Site: | Easy Company 36/35 B3IJ Fed Com #1H | North Reference: | Grid |
| Well: | Sec 36, T20S, R28E | Survey Calculation Method: | Minimum Curvature |
| Wellbore: | BHL: 1330' FSL & 2546' FEL, Sec 35 | | |
| Design: | Design #1 | | |

| Planned Survey | | | | | | | | | |
|-------------------------------|-----------------|-------------|-----------------------|--------------|--------------|-------------------------|-------------------------|------------------------|-----------------------|
| Measured Depth (usft) | Inclination (°) | Azimuth (°) | Vertical Depth (usft) | +N/-S (usft) | +E/-W (usft) | Vertical Section (usft) | Dogleg Rate (°/100usft) | Build Rate (°/100usft) | Turn Rate (°/100usft) |
| 9,800.0 | 91.51 | 269.90 | 9,062.4 | -0.7 | -732.2 | 732.2 | 0.00 | 0.00 | 0.00 |
| 9,900.0 | 91.51 | 269.90 | 9,059.8 | -0.8 | -832.1 | 832.1 | 0.00 | 0.00 | 0.00 |
| 10,000.0 | 91.51 | 269.90 | 9,057.2 | -1.0 | -932.1 | 932.1 | 0.00 | 0.00 | 0.00 |
| 10,100.0 | 91.51 | 269.90 | 9,054.5 | -1.2 | -1,032.1 | 1,032.1 | 0.00 | 0.00 | 0.00 |
| 10,200.0 | 91.51 | 269.90 | 9,051.9 | -1.4 | -1,132.0 | 1,132.0 | 0.00 | 0.00 | 0.00 |
| 10,300.0 | 91.51 | 269.90 | 9,049.2 | -1.6 | -1,232.0 | 1,232.0 | 0.00 | 0.00 | 0.00 |
| 10,400.0 | 91.51 | 269.90 | 9,046.6 | -1.7 | -1,332.0 | 1,332.0 | 0.00 | 0.00 | 0.00 |
| 10,500.0 | 91.51 | 269.90 | 9,044.0 | -1.9 | -1,431.9 | 1,431.9 | 0.00 | 0.00 | 0.00 |
| 10,600.0 | 91.51 | 269.90 | 9,041.3 | -2.1 | -1,531.9 | 1,531.9 | 0.00 | 0.00 | 0.00 |
| 10,700.0 | 91.51 | 269.90 | 9,038.7 | -2.3 | -1,631.9 | 1,631.9 | 0.00 | 0.00 | 0.00 |
| 10,800.0 | 91.51 | 269.90 | 9,036.0 | -2.4 | -1,731.8 | 1,731.8 | 0.00 | 0.00 | 0.00 |
| 10,900.0 | 91.51 | 269.90 | 9,033.4 | -2.6 | -1,831.8 | 1,831.8 | 0.00 | 0.00 | 0.00 |
| 11,000.0 | 91.51 | 269.90 | 9,030.7 | -2.8 | -1,931.7 | 1,931.8 | 0.00 | 0.00 | 0.00 |
| 11,100.0 | 91.51 | 269.90 | 9,028.1 | -3.0 | -2,031.7 | 2,031.7 | 0.00 | 0.00 | 0.00 |
| 11,200.0 | 91.51 | 269.90 | 9,025.5 | -3.2 | -2,131.7 | 2,131.7 | 0.00 | 0.00 | 0.00 |
| 11,300.0 | 91.51 | 269.90 | 9,022.8 | -3.3 | -2,231.6 | 2,231.6 | 0.00 | 0.00 | 0.00 |
| 11,400.0 | 91.51 | 269.90 | 9,020.2 | -3.5 | -2,331.6 | 2,331.6 | 0.00 | 0.00 | 0.00 |
| 11,500.0 | 91.51 | 269.90 | 9,017.5 | -3.7 | -2,431.6 | 2,431.6 | 0.00 | 0.00 | 0.00 |
| 11,600.0 | 91.51 | 269.90 | 9,014.9 | -3.9 | -2,531.5 | 2,531.5 | 0.00 | 0.00 | 0.00 |
| 11,700.0 | 91.51 | 269.90 | 9,012.2 | -4.1 | -2,631.5 | 2,631.5 | 0.00 | 0.00 | 0.00 |
| 11,800.0 | 91.51 | 269.90 | 9,009.6 | -4.2 | -2,731.5 | 2,731.5 | 0.00 | 0.00 | 0.00 |
| 11,900.0 | 91.51 | 269.90 | 9,007.0 | -4.4 | -2,831.4 | 2,831.4 | 0.00 | 0.00 | 0.00 |
| 12,000.0 | 91.51 | 269.90 | 9,004.3 | -4.6 | -2,931.4 | 2,931.4 | 0.00 | 0.00 | 0.00 |
| 12,100.0 | 91.51 | 269.90 | 9,001.7 | -4.8 | -3,031.4 | 3,031.4 | 0.00 | 0.00 | 0.00 |
| 12,200.0 | 91.51 | 269.90 | 8,999.0 | -4.9 | -3,131.3 | 3,131.3 | 0.00 | 0.00 | 0.00 |
| 12,300.0 | 91.51 | 269.90 | 8,996.4 | -5.1 | -3,231.3 | 3,231.3 | 0.00 | 0.00 | 0.00 |
| 12,400.0 | 91.51 | 269.90 | 8,993.7 | -5.3 | -3,331.3 | 3,331.3 | 0.00 | 0.00 | 0.00 |
| 12,500.0 | 91.51 | 269.90 | 8,991.1 | -5.5 | -3,431.2 | 3,431.2 | 0.00 | 0.00 | 0.00 |
| 12,600.0 | 91.51 | 269.90 | 8,988.5 | -5.7 | -3,531.2 | 3,531.2 | 0.00 | 0.00 | 0.00 |
| 12,700.0 | 91.51 | 269.90 | 8,985.8 | -5.8 | -3,631.2 | 3,631.2 | 0.00 | 0.00 | 0.00 |
| 12,800.0 | 91.51 | 269.90 | 8,983.2 | -6.0 | -3,731.1 | 3,731.1 | 0.00 | 0.00 | 0.00 |
| 12,900.0 | 91.51 | 269.90 | 8,980.5 | -6.2 | -3,831.1 | 3,831.1 | 0.00 | 0.00 | 0.00 |
| 13,000.0 | 91.51 | 269.90 | 8,977.9 | -6.4 | -3,931.0 | 3,931.1 | 0.00 | 0.00 | 0.00 |
| 13,100.0 | 91.51 | 269.90 | 8,975.2 | -6.6 | -4,031.0 | 4,031.0 | 0.00 | 0.00 | 0.00 |
| 13,200.0 | 91.51 | 269.90 | 8,972.6 | -6.7 | -4,131.0 | 4,131.0 | 0.00 | 0.00 | 0.00 |
| 13,300.0 | 91.51 | 269.90 | 8,970.0 | -6.9 | -4,230.9 | 4,230.9 | 0.00 | 0.00 | 0.00 |
| 13,400.0 | 91.51 | 269.90 | 8,967.3 | -7.1 | -4,330.9 | 4,330.9 | 0.00 | 0.00 | 0.00 |
| 13,500.0 | 91.51 | 269.90 | 8,964.7 | -7.3 | -4,430.9 | 4,430.9 | 0.00 | 0.00 | 0.00 |
| 13,600.0 | 91.51 | 269.90 | 8,962.0 | -7.5 | -4,530.8 | 4,530.8 | 0.00 | 0.00 | 0.00 |
| 13,700.0 | 91.51 | 269.90 | 8,959.4 | -7.6 | -4,630.8 | 4,630.8 | 0.00 | 0.00 | 0.00 |
| 13,800.0 | 91.51 | 269.90 | 8,956.7 | -7.8 | -4,730.8 | 4,730.8 | 0.00 | 0.00 | 0.00 |
| 13,900.0 | 91.51 | 269.90 | 8,954.1 | -8.0 | -4,830.7 | 4,830.7 | 0.00 | 0.00 | 0.00 |
| 14,000.0 | 91.51 | 269.90 | 8,951.5 | -8.2 | -4,930.7 | 4,930.7 | 0.00 | 0.00 | 0.00 |
| 14,100.0 | 91.51 | 269.90 | 8,948.8 | -8.3 | -5,030.7 | 5,030.7 | 0.00 | 0.00 | 0.00 |
| 14,158.4 | 91.51 | 269.90 | 8,947.3 | -8.4 | -5,089.0 | 5,089.0 | 0.00 | 0.00 | 0.00 |
| PPP2: 1330' FSL & 0' FEL (35) | | | | | | | | | |
| 14,200.0 | 91.51 | 269.90 | 8,946.2 | -8.5 | -5,130.6 | 5,130.6 | 0.00 | 0.00 | 0.00 |
| 14,300.0 | 91.51 | 269.90 | 8,943.5 | -8.7 | -5,230.6 | 5,230.6 | 0.00 | 0.00 | 0.00 |
| 14,400.0 | 91.51 | 269.90 | 8,940.9 | -8.9 | -5,330.6 | 5,330.6 | 0.00 | 0.00 | 0.00 |
| 14,500.0 | 91.51 | 269.90 | 8,938.2 | -9.1 | -5,430.5 | 5,430.5 | 0.00 | 0.00 | 0.00 |
| 14,600.0 | 91.51 | 269.90 | 8,935.6 | -9.2 | -5,530.5 | 5,530.5 | 0.00 | 0.00 | 0.00 |
| 14,700.0 | 91.51 | 269.90 | 8,933.0 | -9.4 | -5,630.5 | 5,630.5 | 0.00 | 0.00 | 0.00 |
| 14,800.0 | 91.51 | 269.90 | 8,930.3 | -9.6 | -5,730.4 | 5,730.4 | 0.00 | 0.00 | 0.00 |

Planning Report

| | | | |
|------------------|-------------------------------------|-------------------------------------|--|
| Database: | Hobbs | Local Co-ordinate Reference: | Site Easy Company 36/35 B3IJ Fed Com #1H |
| Company: | Mewbourne Oil Company | TVD Reference: | WELL @ 3256.0usft (Original Well Elev) |
| Project: | Eddy County, New Mexico NAD 83 | MD Reference: | WELL @ 3256.0usft (Original Well Elev) |
| Site: | Easy Company 36/35 B3IJ Fed Com #1H | North Reference: | Grid |
| Well: | Sec 36, T20S, R28E | Survey Calculation Method: | Minimum Curvature |
| Wellbore: | BHL: 1330' FSL & 2546' FEL, Sec 35 | | |
| Design: | Design #1 | | |

| Planned Survey | | | | | | | | | | |
|---------------------------------|-----------------|-------------|-----------------------|--------------|--------------|-------------------------|-------------------------|------------------------|-----------------------|--|
| Measured Depth (usft) | Inclination (°) | Azimuth (°) | Vertical Depth (usft) | +N/-S (usft) | +E/-W (usft) | Vertical Section (usft) | Dogleg Rate (°/100usft) | Build Rate (°/100usft) | Turn Rate (°/100usft) | |
| 14,900.0 | 91.51 | 269.90 | 8,927.7 | -9.8 | -5,830.4 | 5,830.4 | 0.00 | 0.00 | 0.00 | |
| 15,000.0 | 91.51 | 269.90 | 8,925.0 | -10.0 | -5,930.3 | 5,930.4 | 0.00 | 0.00 | 0.00 | |
| 15,100.0 | 91.51 | 269.90 | 8,922.4 | -10.1 | -6,030.3 | 6,030.3 | 0.00 | 0.00 | 0.00 | |
| 15,200.0 | 91.51 | 269.90 | 8,919.8 | -10.3 | -6,130.3 | 6,130.3 | 0.00 | 0.00 | 0.00 | |
| 15,300.0 | 91.51 | 269.90 | 8,917.1 | -10.5 | -6,230.2 | 6,230.2 | 0.00 | 0.00 | 0.00 | |
| 15,400.0 | 91.51 | 269.90 | 8,914.5 | -10.7 | -6,330.2 | 6,330.2 | 0.00 | 0.00 | 0.00 | |
| 15,500.0 | 91.51 | 269.90 | 8,911.8 | -10.8 | -6,430.2 | 6,430.2 | 0.00 | 0.00 | 0.00 | |
| 15,600.0 | 91.51 | 269.90 | 8,909.2 | -11.0 | -6,530.1 | 6,530.1 | 0.00 | 0.00 | 0.00 | |
| 15,700.0 | 91.51 | 269.90 | 8,906.5 | -11.2 | -6,630.1 | 6,630.1 | 0.00 | 0.00 | 0.00 | |
| 15,800.0 | 91.51 | 269.90 | 8,903.9 | -11.4 | -6,730.1 | 6,730.1 | 0.00 | 0.00 | 0.00 | |
| 15,900.0 | 91.51 | 269.90 | 8,901.3 | -11.6 | -6,830.0 | 6,830.0 | 0.00 | 0.00 | 0.00 | |
| 16,000.0 | 91.51 | 269.90 | 8,898.6 | -11.7 | -6,930.0 | 6,930.0 | 0.00 | 0.00 | 0.00 | |
| 16,100.0 | 91.51 | 269.90 | 8,896.0 | -11.9 | -7,030.0 | 7,030.0 | 0.00 | 0.00 | 0.00 | |
| 16,200.0 | 91.51 | 269.90 | 8,893.3 | -12.1 | -7,129.9 | 7,129.9 | 0.00 | 0.00 | 0.00 | |
| 16,300.0 | 91.51 | 269.90 | 8,890.7 | -12.3 | -7,229.9 | 7,229.9 | 0.00 | 0.00 | 0.00 | |
| 16,400.0 | 91.51 | 269.90 | 8,888.0 | -12.5 | -7,329.9 | 7,329.9 | 0.00 | 0.00 | 0.00 | |
| 16,500.0 | 91.51 | 269.90 | 8,885.4 | -12.6 | -7,429.8 | 7,429.8 | 0.00 | 0.00 | 0.00 | |
| 16,600.0 | 91.51 | 269.90 | 8,882.8 | -12.8 | -7,529.8 | 7,529.8 | 0.00 | 0.00 | 0.00 | |
| 16,700.0 | 91.51 | 269.90 | 8,880.1 | -13.0 | -7,629.7 | 7,629.8 | 0.00 | 0.00 | 0.00 | |
| 16,704.3 | 91.51 | 269.90 | 8,880.0 | -13.0 | -7,634.0 | 7,634.0 | 0.00 | 0.00 | 0.00 | |
| BHL: 1330' FSL & 2546' FEL (35) | | | | | | | | | | |

| Design Targets | | | | | | | | | | |
|--|---------------|--------------|------------|--------------|--------------|-----------------|----------------|------------|--------------|--|
| Target Name | Dip Angle (°) | Dip Dir. (°) | TVD (usft) | +N/-S (usft) | +E/-W (usft) | Northing (usft) | Easting (usft) | Latitude | Longitude | |
| SHL: 1330' FSL & 205' F - hit/miss target - Shape - Point | 0.00 | 0.00 | 0.0 | 0.0 | 0.0 | 555,275.00 | 606,003.00 | 32.5263349 | -104.1235197 | |
| KOP: 1330' FSL & 10' FI - plan hits target center - Point | 0.00 | 0.00 | 8,596.5 | 1.0 | 195.0 | 555,276.00 | 606,198.00 | 32.5263366 | -104.1228870 | |
| FTP: 1330' FSL & 100' F - plan hits target center - Point | 0.00 | 0.00 | 8,875.6 | 0.8 | 105.0 | 555,275.84 | 606,108.00 | 32.5263367 | -104.1231790 | |
| BHL: 1330' FSL & 2546' - plan hits target center - Point | 0.00 | 0.00 | 8,880.0 | -13.0 | -7,634.0 | 555,262.00 | 598,369.00 | 32.5263381 | -104.1482889 | |
| PPP2: 1330' FSL & 0' FE - plan hits target center - Point | 0.00 | 0.00 | 8,947.3 | -8.4 | -5,089.0 | 555,266.55 | 600,914.00 | 32.5263382 | -104.1400314 | |
| LP: 1330' FSL & 500' FE - plan hits target center - Point | 0.00 | 0.00 | 9,074.0 | 0.1 | -295.2 | 555,275.10 | 605,707.80 | 32.5263368 | -104.1244775 | |

Intent ☒ As Drilled ☐

API #

| | | |
|-------------------------------------|---|-------------------|
| Operator Name: Mewbourne Oil Co. | Property Name: Easy Company 36/35 B3IJ Fed Com | Well Number 1H |
|-------------------------------------|---|-------------------|

Kick Off Point (KOP)

| | | | | | | | | | |
|------------------------|---------------|-----------------|--------------|-----|---------------------------|---------------|------------|---------------|----------------|
| UL I | Section 36 | Township 20S | Range 28E | Lot | Feet 1330 | From N/S S | Feet 10 | From E/W E | County Eddy |
| Latitude 32.5263366 | | | | | Longitude -104.1228870 | | | | NAD 83 |

First Take Point (FTP)

| | | | | | | | | | |
|------------------------|---------------|-----------------|--------------|-----|---------------------------|---------------|-------------|---------------|----------------|
| UL I | Section 36 | Township 20S | Range 28E | Lot | Feet 1330 | From N/S S | Feet 100 | From E/W E | County Eddy |
| Latitude 32.5263367 | | | | | Longitude -104.1231790 | | | | NAD 83 |

Last Take Point (LTP)

| | | | | | | | | | |
|------------------------|---------------|-----------------|--------------|-----|---------------------------|---------------|--------------|---------------|----------------|
| UL J | Section 35 | Township 20S | Range 28E | Lot | Feet 1330 | From N/S S | Feet 2546 | From E/W E | County Eddy |
| Latitude 32.5263366 | | | | | Longitude -104.1482899 | | | | NAD 83 |

Is this well the defining well for the Horizontal Spacing Unit? ☒Is this well an infill well? ☐

If infill is yes please provide API if available, Operator Name and well number for Defining well for Horizontal Spacing Unit.

API #

| | | |
|----------------|----------------|-------------|
| Operator Name: | Property Name: | Well Number |
|----------------|----------------|-------------|

KZ 06/29/2018

PECOS DISTRICT DRILLING CONDITIONS OF APPROVAL

| | |
|------------------------------|---|
| OPERATOR'S NAME: | MEWBOURNE OIL COMPANY |
| LEASE NO.: | NMNM103877 |
| WELL NAME & NO.: | EASY COMPANY 36-35 B3IJ FED COM 1H |
| SURFACE HOLE FOOTAGE: | 1330'/S & 205'/E |
| BOTTOM HOLE FOOTAGE: | 1330'/S & 2546'/E |
| LOCATION: | SECTION 36, T20S, R28E, NMP |
| COUNTY: | Eddy County, New Mexico |

COA

| | | | |
|----------------------|---|--|---------------------------------------|
| H2S | <input checked="" type="radio"/> Yes | <input type="radio"/> No | |
| Potash | <input checked="" type="radio"/> None | <input type="radio"/> Secretary | <input type="radio"/> R-111-P |
| Cave/Karst Potential | <input type="radio"/> Low | <input type="radio"/> Medium | <input checked="" type="radio"/> High |
| Cave/Karst Potential | <input type="radio"/> Critical | | |
| Variance | <input type="radio"/> None | <input checked="" type="radio"/> Flex Hose | <input type="radio"/> Other |
| Wellhead | <input type="radio"/> Conventional | <input checked="" type="radio"/> Multibowl | <input type="radio"/> Both |
| Other | <input checked="" type="checkbox"/> 4 String Area | <input checked="" type="checkbox"/> Capitan Reef | <input type="checkbox"/> WIPP |
| Other | <input checked="" type="checkbox"/> Fluid Filled | <input type="checkbox"/> Cement Squeeze | <input type="checkbox"/> Pilot Hole |
| Special Requirements | <input type="checkbox"/> Water Disposal | <input checked="" type="checkbox"/> COM | <input type="checkbox"/> Unit |

A. HYDROGEN SULFIDE

A Hydrogen Sulfide (H2S) Drilling Plan shall be activated 500 feet prior to drilling into the Delaware formation. As a result, the Hydrogen Sulfide area must meet Onshore Order 6 requirements, which includes equipment and personnel/public protection items. If Hydrogen Sulfide is encountered, please provide measured values and formations to the BLM.

B. CASING

Casing Design:

1. The **20** inch surface casing shall be set at approximately **375** feet (a minimum of **70** feet (**Eddy County**) into the Rustler Anhydrite and above the salt) and cemented to the surface.
 - a. If cement does not circulate to the surface, the appropriate BLM office shall be notified and a temperature survey utilizing an electronic type temperature survey with surface log readout will be used or a cement bond log shall be run to verify the top of the cement. Temperature survey will be run a minimum of six hours after pumping cement and ideally between 8-10 hours after

- completing the cement job.
- b. Wait on cement (WOC) time for a primary cement job will be a minimum of **8 hours** or 500 pounds compressive strength, whichever is greater. (This is to include the lead cement)
- c. Wait on cement (WOC) time for a remedial job will be a minimum of 4 hours after bringing cement to surface or 500 pounds compressive strength, whichever is greater.
- d. If cement falls back, remedial cementing will be done prior to drilling out that string.

First intermediate casing must be kept fluid filled to meet BLM minimum collapse requirement.

2. The **13-3/8** inch first intermediate casing shall be set at approximately **1350** feet. The minimum required fill of cement behind the **13-3/8** inch first intermediate casing is:
 - Cement to surface. If cement does not circulate see B.1.a, c-d above.
Wait on cement (WOC) time for a primary cement job is to include the lead cement slurry due to cave/karst or potash.
Excess cement calculates to 24%, additional cement might be required.
 - ❖ In High Cave/Karst Areas if cement does not circulate to surface on the first two casing strings, the cement on the 3rd casing string must come to surface.
 - ❖ In Capitan Reef Areas if cement does not circulate to surface on the first two casing strings, the cement on the 3rd casing string must come to surface.
 - ❖ **Special Capitan Reef requirements.** If lost circulation (50% or greater) occurs below the Base of the Salt, the operator shall do the following:
(Use this for 3 string wells in the Capitan Reef, if 4 string well ensure FW based mud used across the capitan interval)
 - Switch to fresh water mud to protect the Capitan Reef and use fresh water mud until setting the intermediate casing. The appropriate BLM office is to be notified for a PET to witness the switch to fresh water.
 - Daily drilling reports from the Base of the Salt to the setting of the intermediate casing are to be submitted to the BLM CFO engineering staff via e-mail by 0800 hours each morning. Any lost circulation encountered is to be recorded on these drilling reports. The daily drilling report should show mud volume per shift/tour. Failure to submit these reports will result in an Incidence of Non-Compliance being issued for failure to comply with the Conditions of Approval. If not already planned, the operator shall run a caliper survey for the intermediate well bore and submit to the appropriate BLM office.

3. The **9-5/8** inch second intermediate casing shall be set at approximately **3010** feet. The minimum required fill of cement behind the **9-5/8** inch second intermediate casing is:

Option 1 (Single Stage):

- Cement to surface. If cement does not circulate see B.1.a, c-d above.
Wait on cement (WOC) time for a primary cement job is to include the lead cement slurry due to cave/karst or potash.
Excess cement calculates to -38%, additional cement might be required.

Option 2:

Operator has proposed a DV tool, the depth may be adjusted as long as the cement is changed proportionally. The DV tool may be cancelled if cement circulates to surface on the first stage.

- a. First stage to DV tool: Cement to circulate. If cement does not circulate off the DV tool, contact the appropriate BLM office before proceeding with second stage cement job.
 - b. Second stage above DV tool:
 - Cement to surface. If cement does not circulate, contact the appropriate BLM office.
Wait on cement (WOC) time for a primary cement job is to include the lead cement slurry due to cave/karst or potash.
4. The minimum required fill of cement behind the **7** inch production casing is:
 - Cement should tie-back at least **50 feet** on top of Capitan Reef top. If cement does not circulate see B.1.a, c-d above.
Wait on cement (WOC) time for a primary cement job is to include the lead cement slurry due to cave/karst or potash.
Excess cement calculates to 24%, additional cement might be required.
 5. The minimum required fill of cement behind the **4-1/2** inch production liner is:
 - Cement should tie-back **100 feet** into the previous casing. Operator shall provide method of verification.

C. PRESSURE CONTROL

1. Variance approved to use flex line from BOP to choke manifold. Manufacturer's specification to be readily available. No external damage to flex line. Flex line to be installed as straight as possible (no hard bends).
 2. Operator has proposed a multi-bowl wellhead assembly. This assembly will only be tested when installed on the surface casing. Minimum working pressure of the blowout preventer (BOP) and related equipment (BOPE) required for drilling below the surface casing shoe shall be **3000 (3M)** psi.
 - a. Wellhead shall be installed by manufacturer's representatives, submit documentation with subsequent sundry.
 - b. If the welding is performed by a third party, the manufacturer's representative shall monitor the temperature to verify that it does not exceed the maximum temperature of the seal.
 - c. Manufacturer representative shall install the test plug for the initial BOP test.
 - d. If the cement does not circulate and one inch operations would have been possible with a standard wellhead, the well head shall be cut off, cementing operations performed and another wellhead installed.
 - e. Whenever any seal subject to test pressure is broken, all the tests in OOGO2.III.A.2.i must be followed.

D. SPECIAL REQUIREMENT (S)

Communitization Agreement

- The operator will submit a Communitization Agreement to the Carlsbad Field Office, 620 E Greene St. Carlsbad, New Mexico 88220, at least 90 days before the anticipated date of first production from a well subject to a spacing order issued by the New Mexico Oil Conservation Division. The Communitization Agreement will include the signatures of all working interest owners in all Federal and Indian leases subject to the Communitization Agreement (i.e., operating rights owners and lessees of record), or certification that the operator has obtained the written signatures of all such owners and will make those signatures available to the BLM immediately upon request.
- If the operator does not comply with this condition of approval, the BLM may take enforcement actions that include, but are not limited to, those specified in 43 CFR 3163.1.
- In addition, the well sign shall include the surface and bottom hole lease numbers. When the Communitization Agreement number is known, it shall also be on the sign.

GENERAL REQUIREMENTS

The BLM is to be notified in advance for a representative to witness:

- a. Spudding well (minimum of 24 hours)
- b. Setting and/or Cementing of all casing strings (minimum of 4 hours)
- c. BOPE tests (minimum of 4 hours)

☒ Eddy County

Call the Carlsbad Field Office, 620 East Greene St., Carlsbad, NM 88220,
(575) 361-2822

☒ Lea County

Call the Hobbs Field Station, 414 West Taylor, Hobbs NM 88240, (575)
393-3612

1. Unless the production casing has been run and cemented or the well has been properly plugged, the drilling rig shall not be removed from over the hole without prior approval.
 - a. In the event the operator has proposed to drill multiple wells utilizing a skid/walking rig. Operator shall secure the wellbore on the current well, after installing and testing the wellhead, by installing a blind flange of like pressure rating to the wellhead and a pressure gauge that can be monitored while drilling is performed on the other well(s).
 - b. When the operator proposes to set surface casing with Spudder Rig
 - Notify the BLM when moving in and removing the Spudder Rig.
 - Notify the BLM when moving in the 2nd Rig. Rig to be moved in within 90 days of notification that Spudder Rig has left the location.
 - BOP/BOPE test to be conducted per Onshore Oil and Gas Order No. 2 as soon as 2nd Rig is rigged up on well.
2. Floor controls are required for 3M or Greater systems. These controls will be on the rig floor, unobstructed, readily accessible to the driller and will be operational at all times during drilling and/or completion activities. Rig floor is defined as the area immediately around the rotary table; the area immediately above the substructure on which the draw works are located, this does not include the dog house or stairway area.
3. The record of the drilling rate along with the GR/N well log run from TD to surface (horizontal well – vertical portion of hole) shall be submitted to the BLM office as well as all other logs run on the borehole 30 days from completion. If available, a digital copy of the logs is to be submitted in addition to the paper copies. The Rustler top and top and bottom of Salt are to be recorded on the Completion Report.

A. CASING

1. Changes to the approved APD casing program need prior approval if the items substituted are of lesser grade or different casing size or are Non-API. The Operator can exchange the components of the proposal with that of superior strength (i.e. changing from J-55 to N-80, or from 36# to 40#). Changes to the approved cement program need prior approval if the altered cement plan has less volume or strength or if the changes are substantial (i.e. Multistage tool, ECP, etc.). The initial wellhead installed on the well will remain on the well with spools used as needed.
2. Wait on cement (WOC) for Potash Areas: After cementing but before commencing any tests, the casing string shall stand cemented under pressure until both of the following conditions have been met: 1) cement reaches a minimum compressive strength of 500 psi for all cement blends, 2) until cement has been in place at least 24 hours. WOC time will be recorded in the driller's log. The casing integrity test can be done (prior to the cement setting up) immediately after bumping the plug.
3. Wait on cement (WOC) for Water Basin: After cementing but before commencing any tests, the casing string shall stand cemented under pressure until both of the following conditions have been met: 1) cement reaches a minimum compressive strength of 500 psi at the shoe, 2) until cement has been in place at least 8 hours. WOC time will be recorded in the driller's log. See individual casing strings for details regarding lead cement slurry requirements. The casing integrity test can be done (prior to the cement setting up) immediately after bumping the plug.
4. Provide compressive strengths including hours to reach required 500 pounds compressive strength prior to cementing each casing string. Have well specific cement details onsite prior to pumping the cement for each casing string.
5. No pea gravel permitted for remedial or fall back remedial without prior authorization from the BLM engineer.
6. On that portion of any well approved for a 5M BOPE system or greater, a pressure integrity test of each casing shoe shall be performed. Formation at the shoe shall be tested to a minimum of the mud weight equivalent anticipated to control the formation pressure to the next casing depth or at total depth of the well. This test shall be performed before drilling more than 20 feet of new hole.
7. If hardband drill pipe is rotated inside casing, returns will be monitored for metal. If metal is found in samples, drill pipe will be pulled and rubber protectors which have a larger diameter than the tool joints of the drill pipe will be installed prior to continuing drilling operations.
8. Whenever a casing string is cemented in the R-111-P potash area, the NMOCD requirements shall be followed.

B. PRESSURE CONTROL

1. All blowout preventer (BOP) and related equipment (BOPE) shall comply with well control requirements as described in Onshore Oil and Gas Order No. 2 and API RP 53 Sec. 17.
2. If a variance is approved for a flexible hose to be installed from the BOP to the choke manifold, the following requirements apply: The flex line must meet the requirements of API 16C. Check condition of flexible line from BOP to choke manifold, replace if exterior is damaged or if line fails test. Line to be as straight as possible with no hard bends and is to be anchored according to Manufacturer's requirements. The flexible hose can be exchanged with a hose of equal size and equal or greater pressure rating. Anchor requirements, specification sheet and hydrostatic pressure test certification matching the hose in service, to be onsite for review. These documents shall be posted in the company man's trailer and on the rig floor.
3. 5M or higher system requires an HCR valve, remote kill line and annular to match. The remote kill line is to be installed prior to testing the system and tested to stack pressure.
4. If the operator has proposed a multi-bowl wellhead assembly in the APD. The following requirements must be met:
 - a. Wellhead shall be installed by manufacturer's representatives, submit documentation with subsequent sundry.
 - b. If the welding is performed by a third party, the manufacturer's representative shall monitor the temperature to verify that it does not exceed the maximum temperature of the seal.
 - c. Manufacturer representative shall install the test plug for the initial BOP test.
 - d. Whenever any seal subject to test pressure is broken, all the tests in OOGO2.III.A.2.i must be followed.
 - e. If the cement does not circulate and one inch operations would have been possible with a standard wellhead, the well head shall be cut off, cementing operations performed and another wellhead installed.
5. The appropriate BLM office shall be notified a minimum of 4 hours in advance for a representative to witness the tests.
 - a. In a water basin, for all casing strings utilizing slips, these are to be set as soon as the crew and rig are ready and any fallback cement remediation has been done. The casing cut-off and BOP installation can be initiated four hours after installing the slips, which will be approximately six hours after bumping the plug. For those casing strings not using slips, the minimum wait time before cut-off is eight hours after bumping the plug. BOP/BOPE testing can begin after cut-off or once cement reaches 500 psi compressive strength (including lead when specified), whichever is greater. However, if the float does not

hold, cut-off cannot be initiated until cement reaches 500 psi compressive strength (including lead when specified).

- b. In potash areas, for all casing strings utilizing slips, these are to be set as soon as the crew and rig are ready and any fallback cement remediation has been done. For all casing strings, casing cut-off and BOP installation can be initiated at twelve hours after bumping the plug. However, **no tests** shall commence until the cement has had a minimum of 24 hours setup time, except the casing pressure test can be initiated immediately after bumping the plug (only applies to single stage cement jobs).
- c. The tests shall be done by an independent service company utilizing a test plug not a cup or J-packer. The operator also has the option of utilizing an independent tester to test without a plug (i.e. against the casing) pursuant to Onshore Order 2 with the pressure not to exceed 70% of the burst rating for the casing. Any test against the casing must meet the WOC time for water basin (8 hours) or potash (24 hours) or 500 pounds compressive strength, whichever is greater, prior to initiating the test (see casing segment as lead cement may be critical item).
- d. The test shall be run on a 5000 psi chart for a 2-3M BOP/BOP, on a 10000 psi chart for a 5M BOP/BOPE and on a 15000 psi chart for a 10M BOP/BOPE. If a linear chart is used, it shall be a one hour chart. A circular chart shall have a maximum 2 hour clock. If a twelve hour or twenty-four hour chart is used, tester shall make a notation that it is run with a two hour clock.
- e. The results of the test shall be reported to the appropriate BLM office.
- f. All tests are required to be recorded on a calibrated test chart. A copy of the BOP/BOPE test chart and a copy of independent service company test will be submitted to the appropriate BLM office.
- g. The BOP/BOPE test shall include a low pressure test from 250 to 300 psi. The test will be held for a minimum of 10 minutes if test is done with a test plug and 30 minutes without a test plug. This test shall be performed prior to the test at full stack pressure.
- h. BOP/BOPE must be tested by an independent service company within 500 feet of the top of the Wolfcamp formation if the time between the setting of the intermediate casing and reaching this depth exceeds 20 days. This test does not exclude the test prior to drilling out the casing shoe as per Onshore Order No. 2.

C. DRILLING MUD

Mud system monitoring equipment, with derrick floor indicators and visual and audio alarms, shall be operating before drilling into the Wolfcamp formation, and shall be used until production casing is run and cemented.

D. WASTE MATERIAL AND FLUIDS

All waste (i.e. drilling fluids, trash, salts, chemicals, sewage, gray water, etc.) created as a result of drilling operations and completion operations shall be safely contained and disposed of properly at a waste disposal facility. No waste material or fluid shall be disposed of on the well location or surrounding area.

Porto-johns and trash containers will be on-location during fracturing operations or any other crew-intensive operations.

OTA04132021

Hydrogen Sulfide Drilling Operations Plan
Mewbourne Oil Company

1. General Requirements

Rule 118 does not apply to this well because MOC has researched this area and no high concentrations of H₂S were found. MOC will have on location and working all H₂S safety equipment before the Delaware formation for purposes of safety and insurance requirements.

2. Hydrogen Sulfide Training

All personnel, whether regularly assigned, contracted, or employed on an unscheduled basis, will have received training from a qualified instructor in the following areas prior to entering the drilling pad area of the well:

1. The hazards and characteristics of hydrogen sulfide gas.
2. The proper use of personal protective equipment and life support systems.
3. The proper use of hydrogen sulfide detectors, alarms, warning systems, briefing areas, evacuation procedures.
4. The proper techniques for first aid and rescue operations.

Additionally, supervisory personnel will be trained in the following areas:

- 1 The effects of hydrogen sulfide on metal components. If high tensile tubular systems are utilized, supervisory personnel will be trained in their special maintenance requirements.
- 2 Corrective action and shut in procedures, blowout prevention, and well control procedures while drilling a well.
- 3 The contents of the Hydrogen Sulfide Drilling Operations Plan.

There will be an initial training session prior to encountering a known hydrogen sulfide source. The initial training session shall include a review of the site specific Hydrogen Sulfide Drilling Operations Plan.

3. Hydrogen Sulfide Safety Equipment and Systems

All hydrogen sulfide safety equipment and systems will be installed, tested, and operational prior to drilling below the 9 5/8" intermediate casing.

1. Well Control Equipment
 - A. Choke manifold with minimum of one adjustable choke/remote choke.
 - B. Blowout preventers equipped with blind rams and pipe rams to accommodate all pipe sizes with properly sized closing unit
 - C. Auxiliary equipment including annular type blowout preventer.
2. Protective Equipment for Essential Personnel

Thirty minute self contained work unit located in the dog house and at briefing areas.

Additionally: If H₂S is encountered in concentrations less than 10 ppm, fans will be placed in work areas to prevent the accumulation of hazardous amounts of poisonous gas. If higher concentrations of H₂S are detected the well will be shut in and a rotating head, mud/gas separator, remote choke and flare line with igniter will be installed.

3. Hydrogen Sulfide Protection and Monitoring Equipment

Two portable hydrogen sulfide monitors positioned on location for optimum coverage and detection. The units shall have audible sirens to notify personnel when hydrogen sulfide levels exceed 20 PPM.

4. Visual Warning Systems

A. Wind direction indicators as indicated on the wellsite diagram.

B. Caution signs shall be posted on roads providing access to location. Signs shall be painted a high visibility color with lettering of sufficient size to be readable at reasonable distances from potentially contaminated areas.

4. **Mud Program**

The mud program has been designed to minimize the amount of hydrogen sulfide entrained in the mud system. Proper mud weight, safe drilling practices, and the use of hydrogen sulfide scavengers will minimize hazards while drilling the well.

5. **Metallurgy**

All tubular systems, wellheads, blowout preventers, drilling spools, kill lines, choke manifolds, and valves shall be suitable for service in a hydrogen sulfide environment when chemically treated.

6. **Communications**

State & County Officials phone numbers are posted on rig floor and supervisors trailer. Communications in company vehicles and toolpushers are either two way radios or cellular phones.

7. **Well Testing**

Drill stem testing is not an anticipated requirement for evaluation of this well. If a drill stem test is required, it will be conducted with a minimum number of personnel in the immediate vicinity. The test will be conducted during daylight hours only.

8. **Emergency Phone Numbers**

| | |
|---|----------------------------|
| Eddy County Sheriff's Office | 911 or 575-887-7551 |
| Ambulance Service | 911 or 575-885-2111 |
| Carlsbad Fire Dept | 911 or 575-885-2111 |
| Loco Hills Volunteer Fire Dept. | 911 or 575-677-3266 |
| Closest Medical Facility - Columbia Medical Center of Carlsbad | 575-492-5000 |

| | | |
|------------------------------|------------------------------|---------------------|
| Mewbourne Oil Company | Hobbs District Office | 575-393-5905 |
| | Fax | 575-397-6252 |
| | 2nd Fax | 575-393-7259 |

| | | |
|--------------------------------|-----------------------|---------------------|
| District Manager | Robin Terrell | 575-390-4816 |
| Drilling Superintendent | Frosty Lathan | 575-390-4103 |
| | Bradley Bishop | 575-390-6838 |
| Drilling Foreman | Wesley Noseff | 575-441-0729 |

Operator Name: MEWBOURNE OIL COMPANY**Well Name:** EASY COMPANY 36/35 B3IJ FED COM**Well Number:** 1H**Safe containmant attachment:****Waste disposal type:** HAUL TO COMMERCIAL FACILITY **Disposal location ownership:** PRIVATE**Disposal type description:****Disposal location description:** Waste Management facility in Carlsbad.**Waste type:** SEWAGE**Waste content description:** Human waste & grey water**Amount of waste:** 1500 gallons**Waste disposal frequency :** Weekly**Safe containment description:** 2,000 gallon plastic container**Safe containmant attachment:****Waste disposal type:** HAUL TO COMMERCIAL FACILITY **Disposal location ownership:** PRIVATE**Disposal type description:****Disposal location description:** City of Carlsbad Water Treatment facility**Waste type:** DRILLING**Waste content description:** Drill cuttings**Amount of waste:** 3510 barrels**Waste disposal frequency :** One Time Only**Safe containment description:** Drill cuttings will be properly contained in steel tanks (20 yard roll off bins.)**Safe containmant attachment:****Waste disposal type:** HAUL TO COMMERCIAL FACILITY **Disposal location ownership:** PRIVATE**Disposal type description:****Disposal location description:** NMOCD approved waste disposal locations are CRI or Lea Land, both facilities are located on HWY 62/180, Sec. 27 T20S R32E.**Reserve Pit****Reserve Pit being used?** N**Temporary disposal of produced water into reserve pit?** NO**Reserve pit length (ft.)** **Reserve pit width (ft.)****Reserve pit depth (ft.)** **Reserve pit volume (cu. yd.)****Is at least 50% of the reserve pit in cut?****Reserve pit liner****Reserve pit liner specifications and installation description**

Operator Name: MEWBOURNE OIL COMPANY**Well Name:** EASY COMPANY 36/35 B3IJ FED COM**Well Number:** 1H

Cuttings Area

Cuttings Area being used? NO**Are you storing cuttings on location?** N**Description of cuttings location****Cuttings area length (ft.)****Cuttings area width (ft.)****Cuttings area depth (ft.)****Cuttings area volume (cu. yd.)****Is at least 50% of the cuttings area in cut?****WCuttings area liner****Cuttings area liner specifications and installation description**

Section 8 - Ancillary Facilities

Are you requesting any Ancillary Facilities?: N**Ancillary Facilities attachment:****Comments:**

Section 9 - Well Site Layout

Well Site Layout Diagram:

EasyCompany36_35B3IJFedCom1H_wellsitelayout_20190916135922.pdf

Comments:

Section 10 - Plans for Surface Reclamation

Type of disturbance: New Surface Disturbance**Multiple Well Pad Name:** EASY COMPANY 36/35 W0IJ/W0PO/B3IJ
Fed Com**Multiple Well Pad Number:** 3**Recontouring attachment:****Drainage/Erosion control construction:** None**Drainage/Erosion control reclamation:** None



U.S. Department of the Interior
BUREAU OF LAND MANAGEMENT

Drilling Plan Data Report

05/12/2021

APD ID: 10400047478

Submission Date: 09/25/2019

Highlighted data reflects the most recent changes

Operator Name: MEWBOURNE OIL COMPANY

Well Name: EASY COMPANY 36/35 B3IJ FED COM

Well Number: 1H

Show Final Text

Well Type: OIL WELL

Well Work Type: Drill

Section 1 - Geologic Formations

| Formation ID | Formation Name | Elevation | True Vertical Depth | Measured Depth | Lithologies | Mineral Resources | Producing Formation |
|--------------|-----------------|-----------|---------------------|----------------|---------------------|-------------------|---------------------|
| 538554 | UNKNOWN | 3229 | 27 | 27 | OTHER : Topsoil | NONE | N |
| 538558 | TOP SALT | 2674 | 555 | 555 | SALT | NONE | N |
| 538555 | BOTTOM SALT | 2294 | 935 | 935 | SALT | NONE | N |
| 538562 | YATES | 2054 | 1175 | 1175 | SANDSTONE | NATURAL GAS, OIL | N |
| 538563 | CAPITAN REEF | 1774 | 1455 | 1455 | DOLOMITE, Limestone | USEABLE WATER | N |
| 538560 | DELAWARE | 144 | 3085 | 3085 | Limestone | NATURAL GAS, OIL | N |
| 538553 | BONE SPRINGS | -2441 | 5670 | 5670 | Limestone, SHALE | NATURAL GAS, OIL | N |
| 538556 | BONE SPRING 1ST | -3576 | 6805 | 6805 | SANDSTONE | NATURAL GAS, OIL | N |
| 538557 | BONE SPRING 2ND | -4281 | 7510 | 7510 | SANDSTONE | NATURAL GAS, OIL | N |
| 541039 | BONE SPRING 3RD | -5516 | 8745 | 8745 | SANDSTONE | NATURAL GAS, OIL | Y |

Section 2 - Blowout Prevention

Pressure Rating (PSI): 3M

Rating Depth: 16704

Equipment: Annular, Pipe Rams, Blind Ram

Requesting Variance? YES

Variance request: A variance is requested for the use of a flexible choke line from the BOP to Choke Manifold. Anchors not required by manufacturer. A multi-bowl wellhead is being used. See attached schematic

Testing Procedure: BOP/BOPE will be tested by an independent service company to 250 psi low and the high pressure indicated above per Onshore Order 2 requirements. The System may be upgraded to a higher pressure but still tested to the working pressure listed in the table above. If the system is upgraded all the components installed will be functional and tested. Pipe rams will be operationally checked each 24 hour period. Blind rams will be operationally checked on each trip out of the hole. These checks will be noted on the daily tour sheets. Other accessories to the BOP equipment will include a Kelly cock and floor safety valve (inside BOP) and choke lines and choke manifold.

Choke Diagram Attachment:

Operator Name: MEWBOURNE OIL COMPANY

Well Name: EASY COMPANY 36/35 B3IJ FED COMWell Number: 1H

Easy_Company_36_35_B3IJ_Fed_Com_1H_3M_BOPE_Choke_Diagram_20190918142847.pdf

Easy_Company_36_35_B3IJ_Fed_Com_1H_Flex_Line_Specs_20190918142847.pdf

Easy_Company_36_35_B3IJ_Fed_Com_1H_Flex_Line_Specs_API_16C_20190918142848.pdf

BOP Diagram Attachment:

Easy_Company_36_35_B3IJ_Fed_Com_1H_H2S_Plan_20190918142858.pdf

Easy_Company_36_35_B3IJ_Fed_Com_1H_3M_BOPE_Schematic_20190918142859.pdf

Section 3 - Casing

| Casing ID | String Type | Hole Size | Csg Size | Condition | Standard | Tapered String | Top Set MD | Bottom Set MD | Top Set TVD | Bottom Set TVD | Top Set MSL | Bottom Set MSL | Calculated casing length MD | Grade | Weight | Joint Type | Collapse SF | Burst SF | Joint SF Type | Joint SF | Body SF Type | Body SF |
|-----------|--------------|-----------|----------|-----------|----------|----------------|------------|---------------|-------------|----------------|-------------|----------------|-----------------------------|-------|--------|------------|-------------|----------|---------------|----------|--------------|---------|
| 1 | SURFACE | 26 | 20.0 | NEW | API | N | 0 | 330 | 0 | 330 | 3229 | 2899 | 330 | J-55 | 94 | BUTT | 3.614 | 14.6 | DRY | 45.2 | DRY | 47.71 |
| 2 | INTERMEDIATE | 17.5 | 13.375 | NEW | API | N | 0 | 1350 | 0 | 1350 | 3229 | 1879 | 1350 | H-40 | 48 | ST&C | 1.22 | 2.74 | DRY | 4.97 | DRY | 8.35 |
| 3 | INTERMEDIATE | 12.25 | 9.625 | NEW | API | N | 0 | 3010 | 0 | 3010 | 3624 | 219 | 3010 | J-55 | 36 | LT&C | 1.27 | 2.2 | DRY | 4.1 | DRY | 5.1 |
| 4 | PRODUCTION | 8.75 | 7.0 | NEW | API | N | 0 | 9360 | 0 | 9074 | 3635 | -5845 | 9360 | P-110 | 26 | LT&C | 1.88 | 2.49 | DRY | 2.91 | DRY | 3.79 |
| 5 | LINER | 6.125 | 4.5 | NEW | API | N | 8600 | 16705 | 8597 | 9074 | -5368 | -5845 | 8105 | P-110 | 13.5 | LT&C | 2.52 | 2.93 | DRY | 2.33 | DRY | 2.91 |

Casing Attachments



GATES E & S NORTH AMERICA, INC.
134 44TH STREET
CORPUS CHRISTI, TEXAS 78405

PHONE: 361-887-9807
FAX: 361-887-0812
EMAIL: Tim.Cantu@gates.com
WEB: www.gates.com

10K CEMENTING ASSEMBLY PRESSURE TEST CERTIFICATE

| | | | |
|----------------------|--------------------------------|------------------|------------------------|
| Customer : | AUSTIN DISTRIBUTING | Test Date: | 4/30/2015 |
| Customer Ref. : | 4060578 | Hose Serial No.: | D-043015-7 |
| Invoice No. : | 500506 | Created By: | JUSTIN CROPPER |
| Product Description: | 10K3.548.0CK4.1/1610KFLGE/E LE | | |
| End Fitting 1 : | 4 1/16 10K FLG | End Fitting 2 : | 4 1/16 10K FLG |
| Gates Part No. : | 4773-6290 | Assembly Code : | L36554102914D-043015-7 |
| Working Pressure : | 10,000 PSI | Test Pressure : | 15,000 PSI |

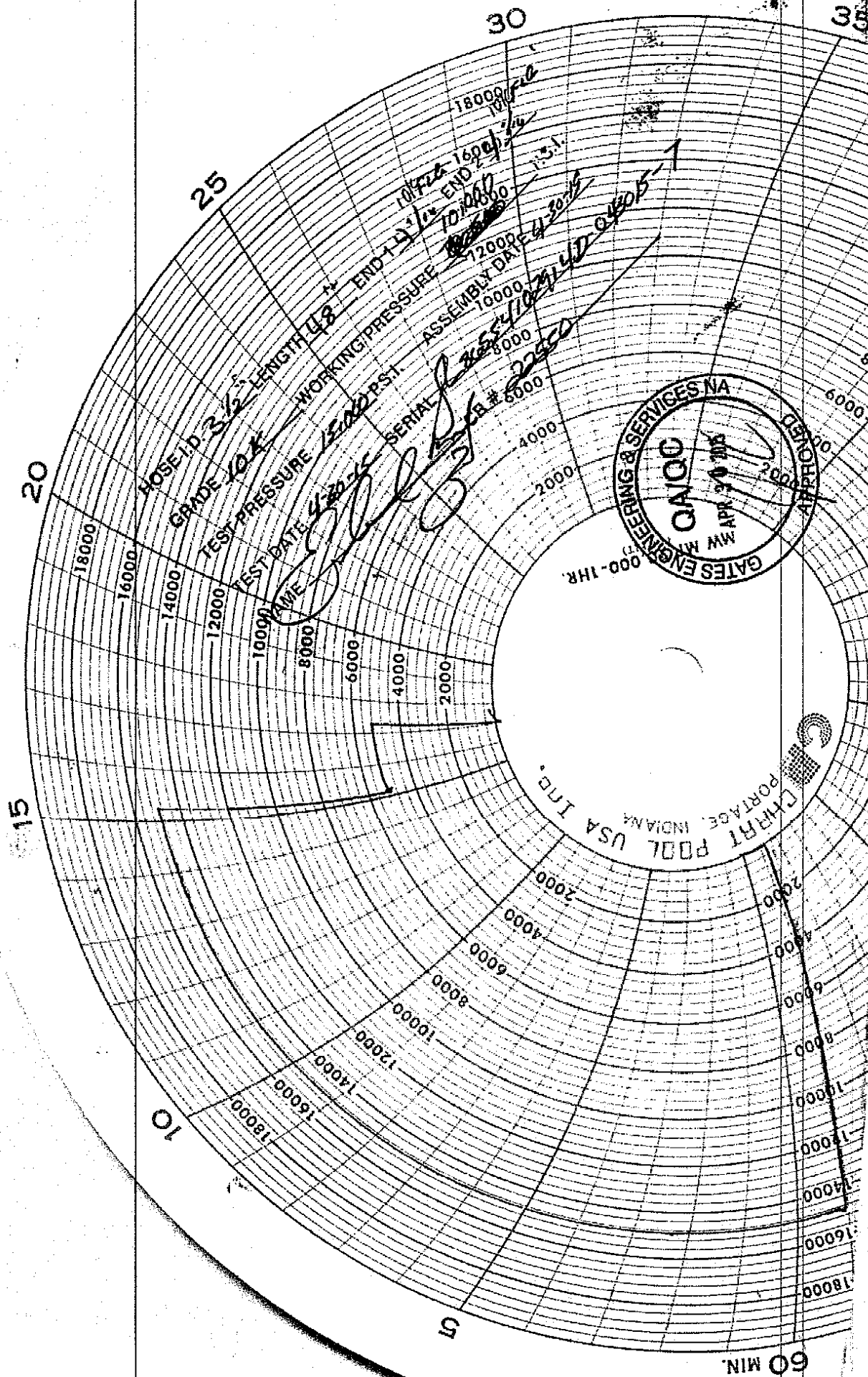
Gates E & S North America, Inc. certifies that the following hose assembly has been tested to the Gates Oilfield Roughneck Agreement/Specification requirements and passed the 15 minute hydrostatic test per API Spec 7K/Q1, Fifth Edition, June 2010, Test pressure 9.6.7 and per Table 9 to 15,000 psi in accordance with this product number. Hose burst pressure 9.6.7.2 exceeds the minimum of 2.5 times the working pressure per Table 9.

Quality Manager : **QUALITY**
 Date : 4/30/2015
 Signature : *Justin Cropper*

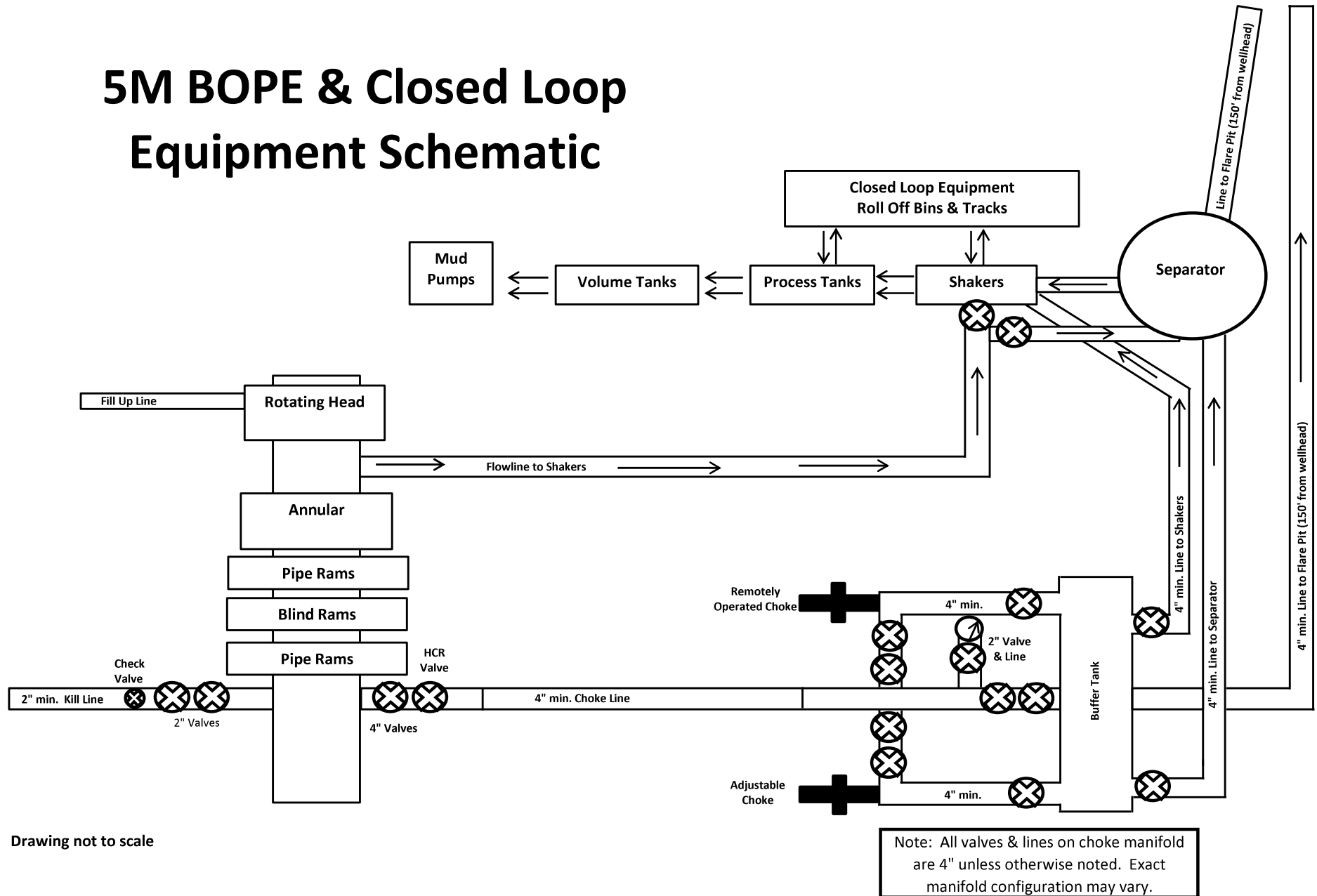
Production: **PRODUCTION**
 Date : 4/30/2015
 Signature : *Justin Cropper*

Form-PTC - 01 Rev.02



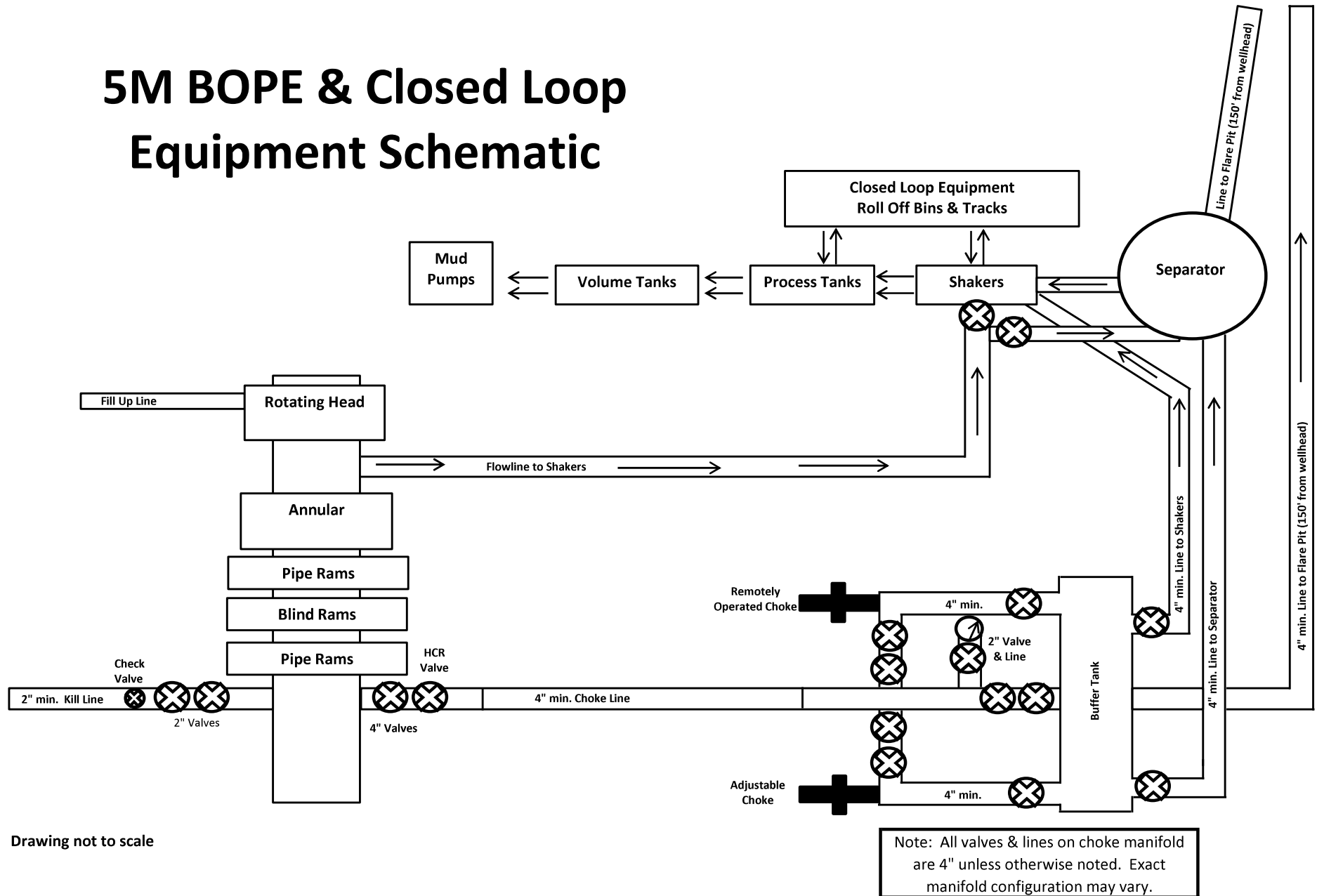


5M BOPE & Closed Loop Equipment Schematic



Drawing not to scale

5M BOPE & Closed Loop Equipment Schematic



Drawing not to scale



GATES E & S NORTH AMERICA, INC.
134 44TH STREET
CORPUS CHRISTI, TEXAS 78405

PHONE: 361-887-9807
FAX: 361-887-0812
EMAIL: Tim.Cantu@gates.com
WEB: www.gates.com

10K CEMENTING ASSEMBLY PRESSURE TEST CERTIFICATE

| | | | |
|----------------------|--------------------------------|------------------|------------------------|
| Customer : | AUSTIN DISTRIBUTING | Test Date: | 4/30/2015 |
| Customer Ref. : | 4060578 | Hose Serial No.: | D-043015-7 |
| Invoice No. : | 500506 | Created By: | JUSTIN CROPPER |
| Product Description: | 10K3.548.0CK4.1/1610KFLGE/E LE | | |
| End Fitting 1 : | 4 1/16 10K FLG | End Fitting 2 : | 4 1/16 10K FLG |
| Gates Part No. : | 4773-6290 | Assembly Code : | L36554102914D-043015-7 |
| Working Pressure : | 10,000 PSI | Test Pressure : | 15,000 PSI |

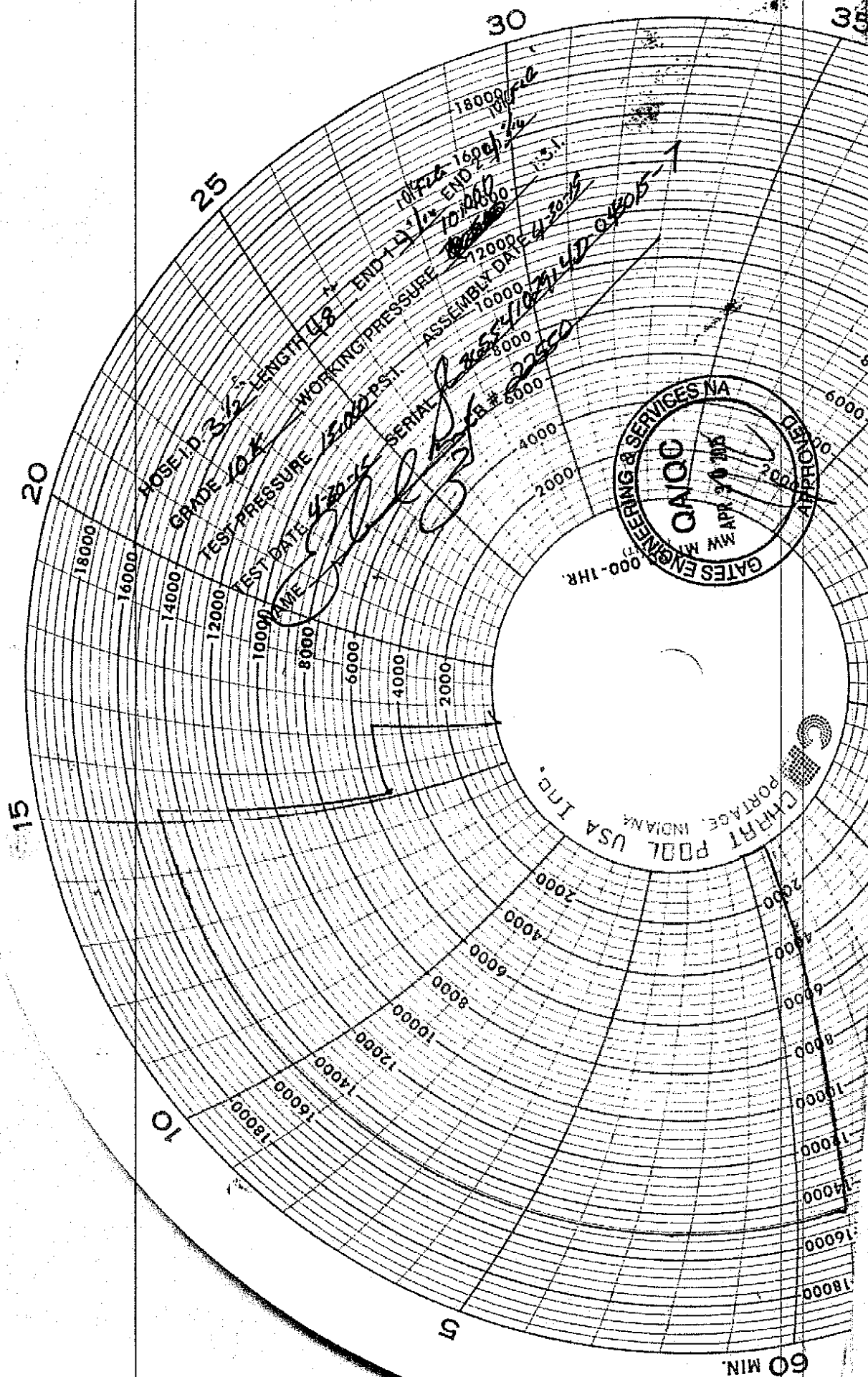
Gates E & S North America, Inc. certifies that the following hose assembly has been tested to the Gates Oilfield Roughneck Agreement/Specification requirements and passed the 15 minute hydrostatic test per API Spec 7K/Q1, Fifth Edition, June 2010, Test pressure 9.6.7 and per Table 9 to 15,000 psi in accordance with this product number. Hose burst pressure 9.6.7.2 exceeds the minimum of 2.5 times the working pressure per Table 9.

Quality Manager : **QUALITY**
 Date : 4/30/2015
 Signature : *Justin Cropper*

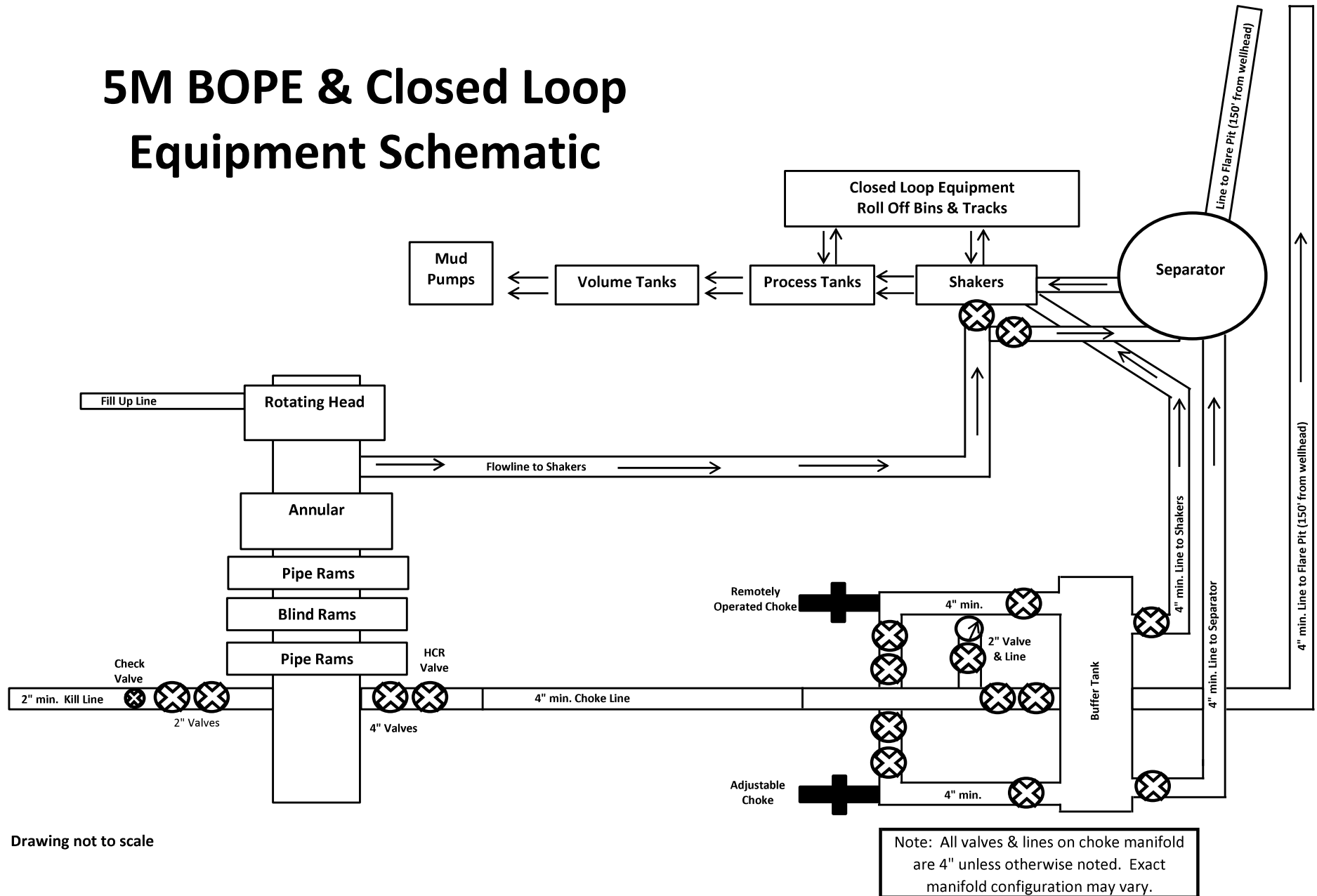
Production: **PRODUCTION**
 Date : 4/30/2015
 Signature : *Justin Cropper*

Form PTC - 01 Rev.02





5M BOPE & Closed Loop Equipment Schematic



Drawing not to scale



GATES E & S NORTH AMERICA, INC.
134 44TH STREET
CORPUS CHRISTI, TEXAS 78405

PHONE: 361-887-9807
FAX: 361-887-0812
EMAIL: Tim.Cantu@gates.com
WEB: www.gates.com

10K CEMENTING ASSEMBLY PRESSURE TEST CERTIFICATE

| | | | |
|----------------------|--------------------------------|------------------|------------------------|
| Customer : | AUSTIN DISTRIBUTING | Test Date: | 4/30/2015 |
| Customer Ref. : | 4060578 | Hose Serial No.: | D-043015-7 |
| Invoice No. : | 500506 | Created By: | JUSTIN CROPPER |
| Product Description: | 10K3.548.0CK4.1/1610KFLGE/E LE | | |
| End Fitting 1 : | 4 1/16 10K FLG | End Fitting 2 : | 4 1/16 10K FLG |
| Gates Part No. : | 4773-6290 | Assembly Code : | L36554102914D-043015-7 |
| Working Pressure : | 10,000 PSI | Test Pressure : | 15,000 PSI |

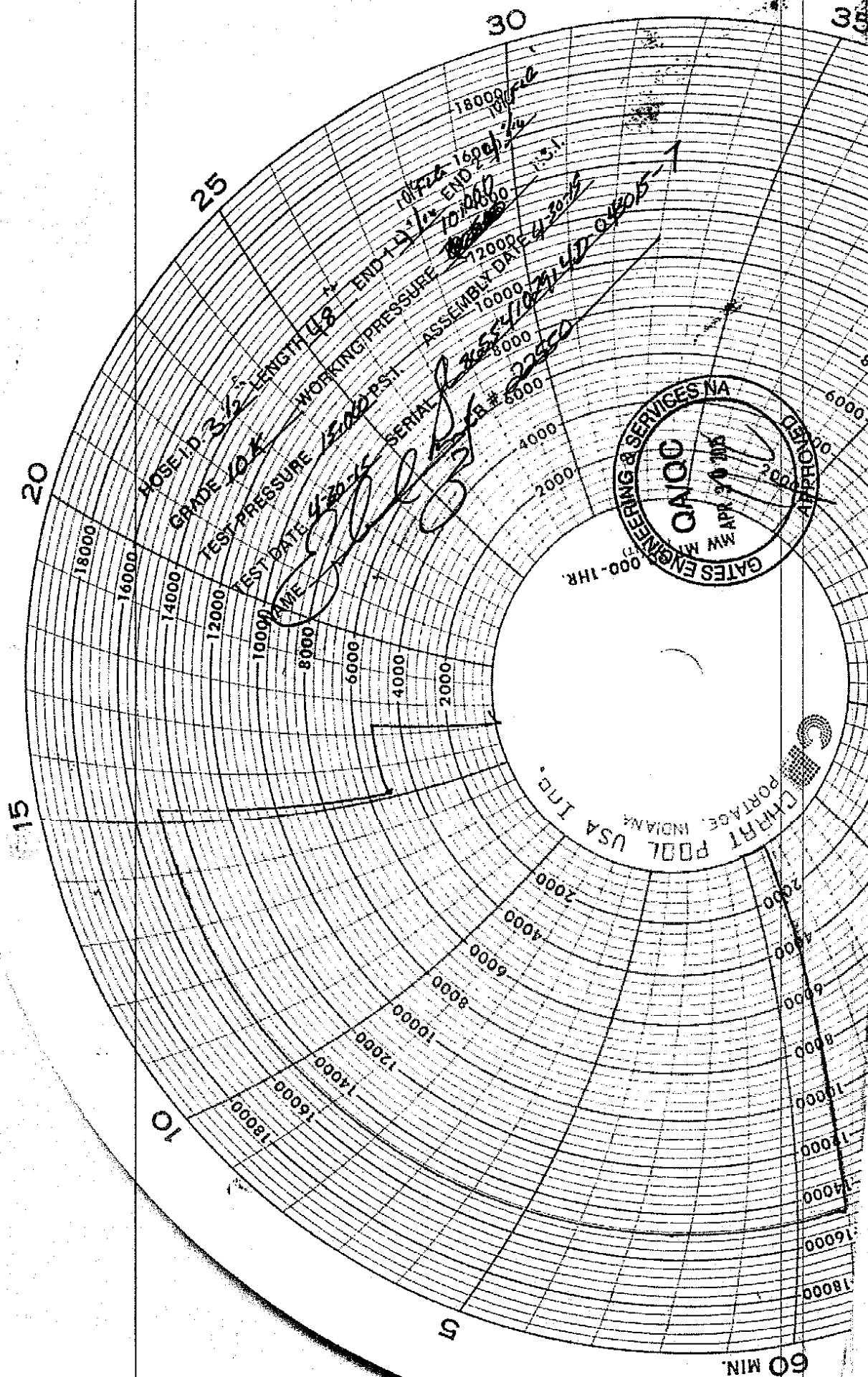
Gates E & S North America, Inc. certifies that the following hose assembly has been tested to the Gates Oilfield Roughneck Agreement/Specification requirements and passed the 15 minute hydrostatic test per API Spec 7K/Q1, Fifth Edition, June 2010, Test pressure 9.6.7 and per Table 9 to 15,000 psi in accordance with this product number. Hose burst pressure 9.6.7.2 exceeds the minimum of 2.5 times the working pressure per Table 9.

Quality Manager : **QUALITY**
 Date : 4/30/2015
 Signature : *Justin Cropper*

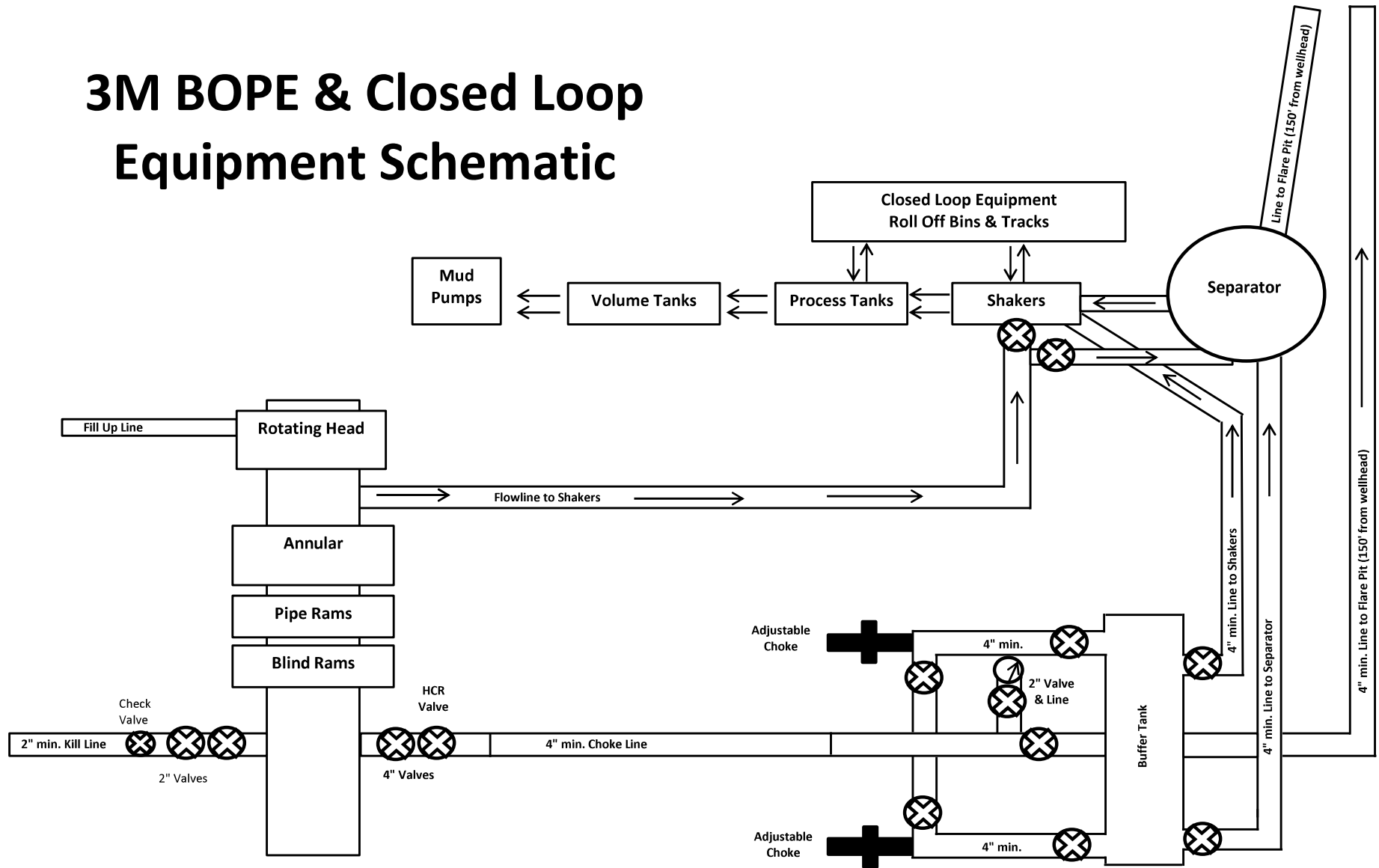
Production: **PRODUCTION**
 Date : 4/30/2015
 Signature : *Justin Cropper*

Form PTC - 01 Rev.02





3M BOPE & Closed Loop Equipment Schematic



Drawing not to scale



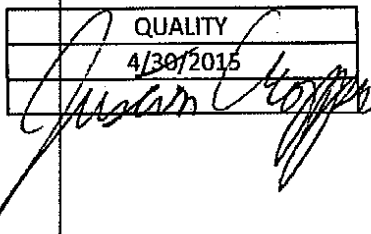
GATES E & S NORTH AMERICA, INC.
134 44TH STREET
CORPUS CHRISTI, TEXAS 78405

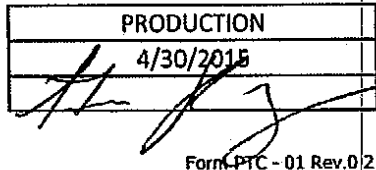
PHONE: 361-887-9807
FAX: 361-887-0812
EMAIL: Tim.Cantu@gates.com
WEB: www.gates.com

10K CEMENTING ASSEMBLY PRESSURE TEST CERTIFICATE

| | | | |
|----------------------|--------------------------------|------------------|------------------------|
| Customer : | AUSTIN DISTRIBUTING | Test Date: | 4/30/2015 |
| Customer Ref. : | 4060578 | Hose Serial No.: | D-043015-7 |
| Invoice No. : | 500506 | Created By: | JUSTIN CROPPER |
| Product Description: | 10K3.548.0CK4.1/1610KFLGE/E LE | | |
| End Fitting 1 : | 4 1/16 10K FLG | End Fitting 2 : | 4 1/16 10K FLG |
| Gates Part No. : | 4773-6290 | Assembly Code : | L36554102914D-043015-7 |
| Working Pressure : | 10,000 PSI | Test Pressure : | 15,000 PSI |

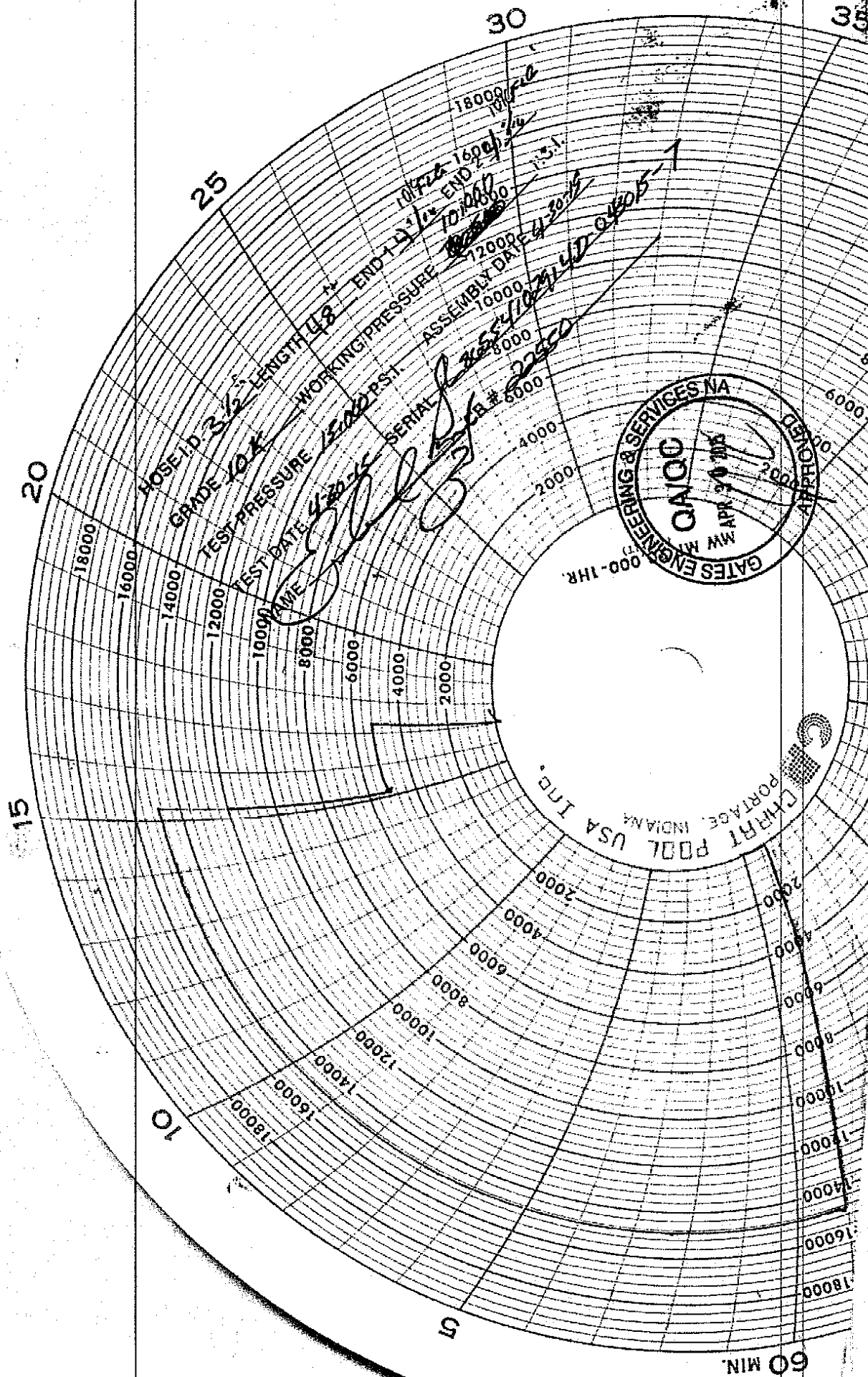
Gates E & S North America, Inc. certifies that the following hose assembly has been tested to the Gates Oilfield Roughneck Agreement/Specification requirements and passed the 15 minute hydrostatic test per API Spec 7K/Q1, Fifth Edition, June 2010, Test pressure 9.6.7 and per Table 9 to 15,000 psi in accordance with this product number. Hose burst pressure 9.6.7.2 exceeds the minimum of 2.5 times the working pressure per Table 9.

Quality Manager :  **QUALITY**
 Date : 4/30/2015
 Signature :

Production: 
 Date : 4/30/2015
 Signature :

Form-PTC - 01 Rev.02







GATES ENGINEERING & SERVICES NORTH AMERICA
7603 Prairie Oak Dr.
Houston, TX 77086

PHONE: (281) 602 - 4119
FAX:
EMAIL: Troy.Schmidt@gates.com
WEB: www.gates.com

10K CHOKE & KILL ASSEMBLY PRESSURE TEST CERTIFICATE

| | | | |
|----------------------|-------------------------------------|------------------|-------------------------|
| Customer: | A-7 AUSTIN INC DBA AUSTIN HOSE | Test Date: | 8/20/2018 |
| Customer Ref.: | 4101901 | Hose Serial No.: | H-082018-10 |
| Invoice No.: | 511956 | Created By: | Moosa Naqvi |
| Product Description: | 10KF3.035.0CK41/1610KFLGFXDxFLT L/E | | |
| End Fitting 1: | 4 1/16 in. Fixed Flange | End Fitting 2: | 4 1/16 in. Float Flange |
| Gates Part No.: | 68503010-9721632 | Assembly Code: | L40695052218H-082018-10 |
| Working Pressure: | 10,000 psi. | Test Pressure: | 15,000 psi. |

Gates Engineering & Services North America certifies that the following hose assembly has successfully passed all pressure testing requirements set forth in Gates specifications: GTS-04-052 (for 5K assemblies) or GTS-04-053 (10K assemblies), which include reference to Specification API 16C (2nd Edition); sections 7.5.4, 7.5.9, and 10.8.7. A test graph will accompany this test certificate to illustrate conformity to test requirements.

Quality: QUALITY
Date : 8/20/2018
Signature : *Moosa Naqvi*

Production: PRODUCTION
Date : 8/20/2018
Signature : *[Signature]*

Form PTC - 01 Rev.0 2

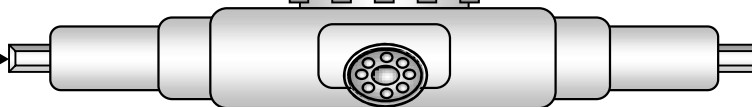


Hydril "GK"
13 5/8" 5M

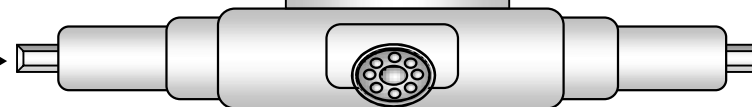


Hydril "GK"

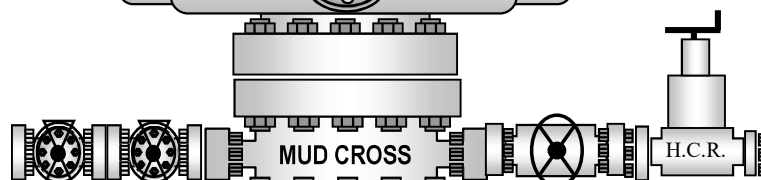
Cameron Type U
13 5/8" 5M



4 1/2" x 5 7/8" VBR



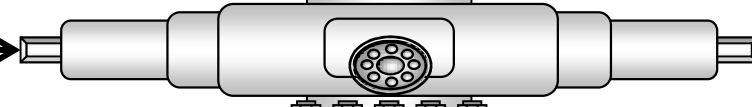
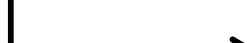
BLIND RAMS



MUD CROSS



H.C.R.



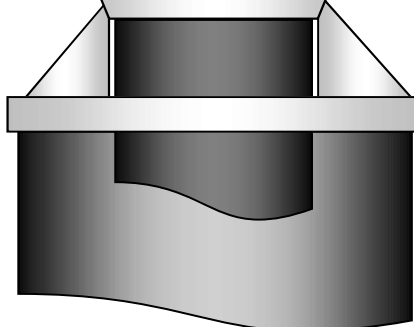
7" RAMS



13 5/8" 5M

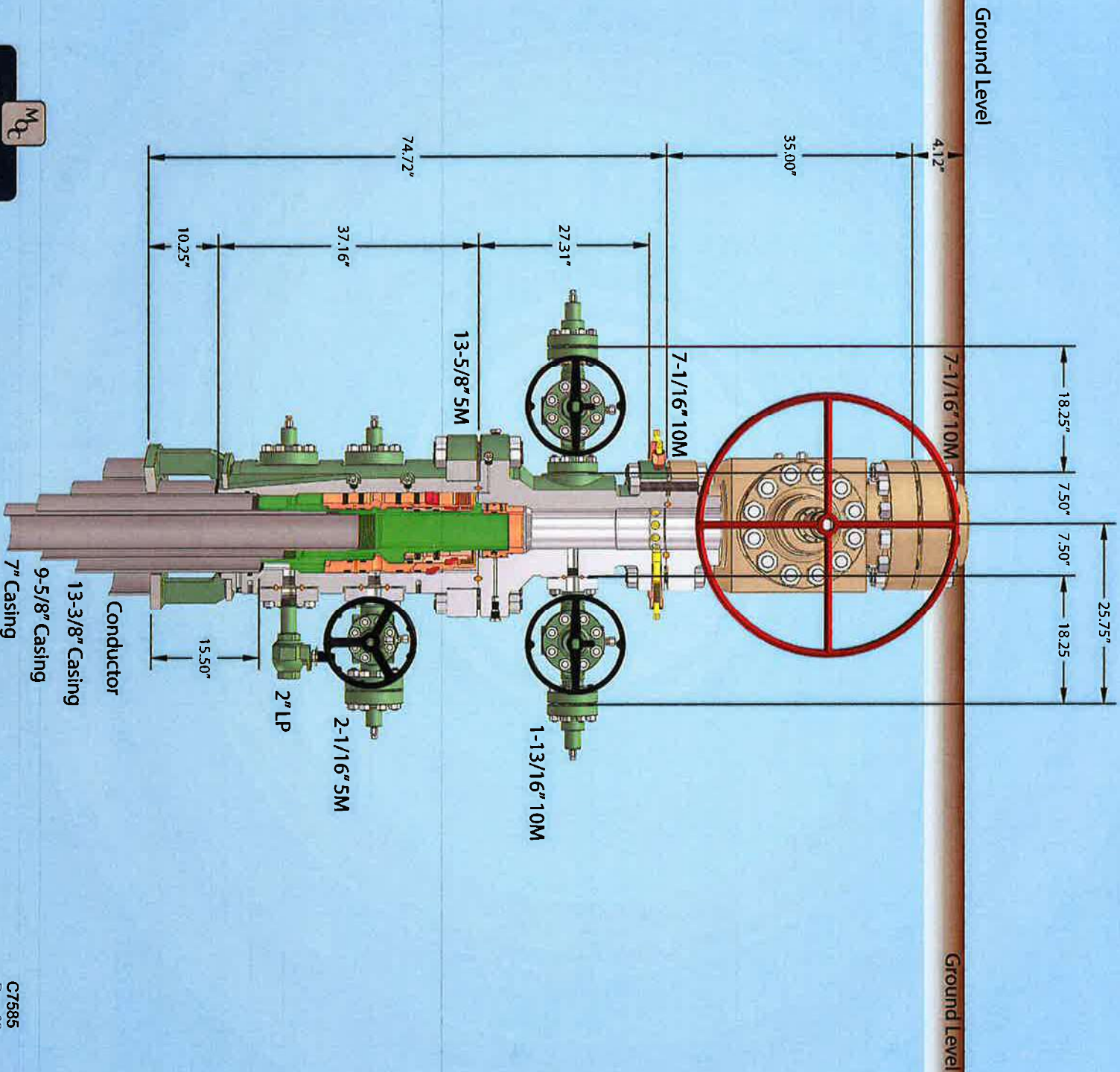
13 5/8" 5M

13 5/8" 5M





13-5/8" MN-DS Wellhead System



NOTE: All dimensions on this drawing are estimated measurements and should be evaluated by engineering.

C7585
Rev. 02



Engineering 53" conductor cut-off
79



13-5/8" MN-DS Wellhead System



NOTE: All dimensions on this drawing are estimated measurements and should be evaluated by engineering.

C7585
Rev. 02



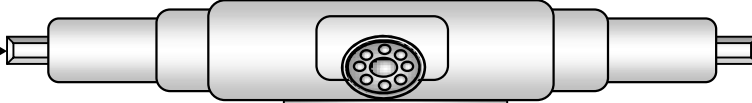
Engineering 53' conductor cut-off
79

Hydril "GK"
13 5/8" 5M

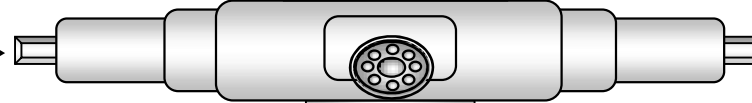


Hydril "GK"

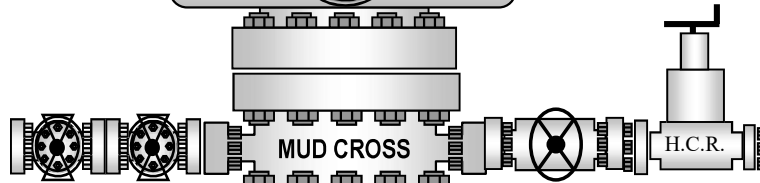
Cameron Type U
13 5/8" 5M



4 1/2" x 5 7/8" VBR

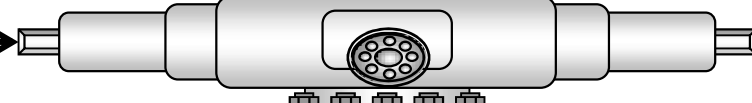


BLIND RAMS



MUD CROSS

H.C.R.



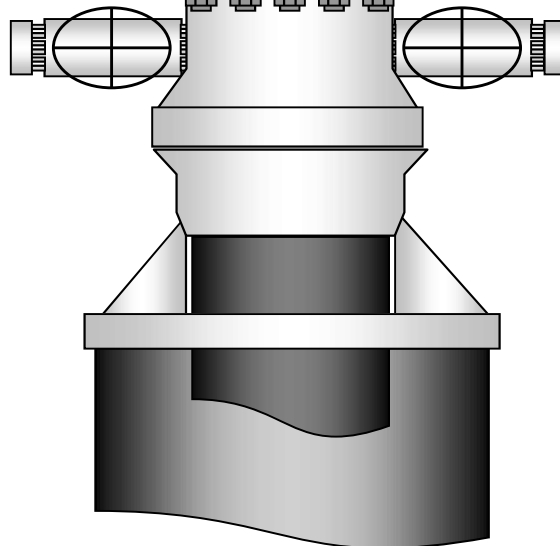
7" RAMS



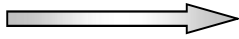
13 5/8" 5M

13 5/8" 5M

13 5/8" 5M

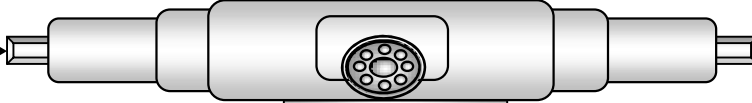


Hydril "GK"
13 5/8" 5M

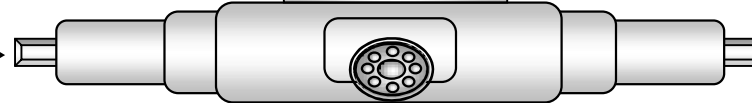


Hydril "GK"

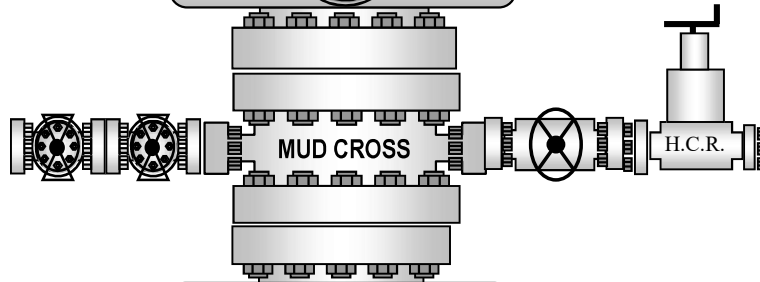
Cameron Type U
13 5/8" 5M



4 1/2" x 5 7/8" VBR



BLIND RAMS

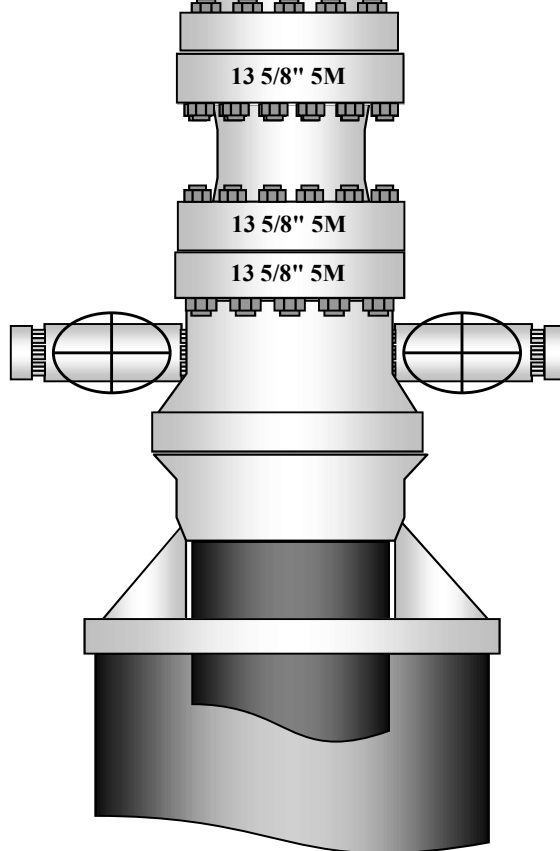
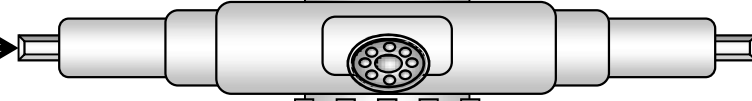


13 5/8" 5M

13 5/8" 5M

13 5/8" 5M

7" RAMS





13-5/8" MN-DS Wellhead System



NOTE: All dimensions on this drawing are estimated measurements and should be evaluated by engineering.

C7585
Rev. 02

MEMBOURNE
OIL COMPANY

MOC

District I
1625 N. French Dr., Hobbs, NM 88240
Phone:(575) 393-6161 Fax:(575) 393-0720
District II
811 S. First St., Artesia, NM 88210
Phone:(575) 748-1283 Fax:(575) 748-9720
District III
1000 Rio Brazos Rd., Aztec, NM 87410
Phone:(505) 334-6178 Fax:(505) 334-6170
District IV
1220 S. St Francis Dr., Santa Fe, NM 87505
Phone:(505) 476-3470 Fax:(505) 476-3462

State of New Mexico
Energy, Minerals and Natural Resources
Oil Conservation Division
1220 S. St Francis Dr.
Santa Fe, NM 87505

COMMENTS

Action 28133

COMMENTS

| | | | | | | | | | |
|------------|-------------------------|---------------|----------------|--------|-------|----------------|-------|--------------|-------------|
| Operator: | MEWBOURNE OIL CO | P.O. Box 5270 | Hobbs, NM88241 | OGRID: | 14744 | Action Number: | 28133 | Action Type: | FORM 3160-3 |
| Created By | Comment | | | | | Comment Date | | | |
| kpickford | KP GEO Review 5/14/2021 | | | | | 05/14/2021 | | | |

District I

1625 N. French Dr., Hobbs, NM 88240
 Phone:(575) 393-6161 Fax:(575) 393-0720

District II

811 S. First St., Artesia, NM 88210
 Phone:(575) 748-1283 Fax:(575) 748-9720

District III

1000 Rio Brazos Rd., Aztec, NM 87410
 Phone:(505) 334-6178 Fax:(505) 334-6170

District IV

1220 S. St Francis Dr., Santa Fe, NM 87505
 Phone:(505) 476-3470 Fax:(505) 476-3462

State of New Mexico
Energy, Minerals and Natural Resources
Oil Conservation Division
1220 S. St Francis Dr.
Santa Fe, NM 87505

CONDITIONS

Action 28133

CONDITIONS OF APPROVAL

| | | | | | | | | | |
|-----------|------------------|---------------|----------------|--------|-------|----------------|-------|--------------|-------------|
| Operator: | MEWBOURNE OIL CO | P.O. Box 5270 | Hobbs, NM88241 | OGRID: | 14744 | Action Number: | 28133 | Action Type: | FORM 3160-3 |
|-----------|------------------|---------------|----------------|--------|-------|----------------|-------|--------------|-------------|

| | |
|--------------|--|
| OCD Reviewer | Condition |
| kpickford | Notify OCD 24 hours prior to casing & cement |
| kpickford | Will require a File As Drilled C-102 and a Directional Survey with the C-104 |
| kpickford | Once the well is spud, to prevent ground water contamination through whole or partial conduits from the surface, the operator shall drill without interruption through the fresh water zone or zones and shall immediately set in cement the water protection string |
| kpickford | Cement is required to circulate on both surface and intermediate1 strings of casing |
| kpickford | Oil base muds are not to be used until fresh water zones are cased and cemented providing isolation from the oil or diesel. This includes synthetic oils. Oil based mud, drilling fluids and solids must be contained in a steel closed loop system |