

| Well Name       | Well Number | US Well Number | Lease Number | Case Number | Operator |
|-----------------|-------------|----------------|--------------|-------------|----------|
| PAPA FRITAS 27- | 622H        | 3001546577     | NMNM105557   | NMNM105557  | DEVON    |
| PAPA FRITAS 27- | 621H        | 3001546573     | NMNM105557   | NMNM105557  | DEVON    |
| PAPA FRITAS 27- | 712H        | 3001546574     | NMNM105557   | NMNM105557  | DEVON    |
| PAPA FRITAS 27- | 623H        | 3001546576     | NMNM105557   | NMNM105557  | DEVON    |
| PAPA FRITAS 27- | 711H        | 3001546572     | NMNM105557   | NMNM105557  | DEVON    |
| PAPA FRITAS 27- | 713H        | 3001546575     | NMNM105557   | NMNM105557  | DEVON    |

Notice of Intent

Type of Submission: Notice of Intent

Date Sundry Submitted: 03/29/2021

Date proposed operation will begin: 03/28/2021

Type of Action Other

Time Sundry Submitted: 08:45

Procedure Description: Devon Energy Production Co., L.P. (Devon) respectfully request to have the attached plat spacing changed to 1280 to reflect the approved CA.

Surface Disturbance

Is any additional surface disturbance proposed?: No

NOI Attachments

- Procedure Description
- 30015465750000\_2\_wf\_Redacted\_20210329084308.pdf
  - 30015465740000\_2\_wf\_Redacted\_20210329084252.pdf
  - 30015465720000\_2\_wf\_Redacted\_20210329084239.pdf
  - 30015465760000\_2\_wf\_Redacted\_20210329084227.pdf
  - 30015465770000\_2\_wf\_Redacted\_20210329084212.pdf
  - 30015465730000\_2\_wf\_Redacted\_20210329084158.pdf

Operator Certification

I certify that the foregoing is true and correct. Title 18 U.S.C. Section 1001 and Title 43 U.S.C. Section 1212, make it a crime for any person knowingly and willfully to make to any department or agency of the United States any false, fictitious or fraudulent statements or representations as to any matter within its jurisdiction. Electronic submission of Sundry Notices through this system satisfies regulations requiring a submission of Form 3160-5 or a Sundry Notice.

**Operator Electronic Signature:** JENNY HARMS

**Signed on:** MAR 29, 2021 08:45 AM

**Name:** DEVON ENERGY PRODUCTION COMPANY LP

**Title:** Regulatory Compliance Professional

**Street Address:** 333 West Sheridan Avenue

**City:** Oklahoma City                      **State:** OK

**Phone:** (405) 552-6560

**Email address:** jennifer.harms@dvn.com

Field Representative

**Representative Name:**

**Street Address:**

**City:**    **State:**    **Zip:**

**Phone:**

**Email address:**

BLM Point of Contact

**BLM POC Name:** CHRISTOPHER WALLS

**BLM POC Title:** Petroleum Engineer

**BLM POC Phone:** 5752342234

**BLM POC Email Address:** cwalls@blm.gov

**Disposition:** Approved

**Disposition Date:** 05/10/2021

**Signature:** Chris Walls

RECEIVED

**District I**  
1625 N. French Dr., Hobbs, NM 88240  
Phone: (575) 393-6161 Fax: (575) 393-0720

**District II**  
811 S. First St., Artesia, NM 88210  
Phone: (505) 748-1283 Fax: (505) 748-9720

**District III**  
1000 Rio Brazos Road, Aztec, NM 87410  
Phone: (505) 334-6178 Fax: (505) 334-6170

**District IV**  
1220 S. St. Francis Dr., Santa Fe, NM 87505  
Phone: (505) 476-3460 Fax: (505) 476-3462

State of New Mexico  
Energy, Minerals & Natural Resources

## OIL CONSERVATION DIVISION

1220 South St. Francis Dr.

Santa Fe, NM 87505

Form C-102

Revised August 1, 2011

Submit one copy to

Appropriate District Office

☒ AMENDED REPORT

## WELL LOCATION AND ACREAGE DEDICATION PLAT

|  |  |  |
|--|--|--|
| <sup>1</sup> API Number<br><b>30-015-46572</b> | <sup>2</sup> Pool Code<br><b>98220</b>                                     | <sup>3</sup> Pool Name<br><b>PURPLE SAGE; WOLFCAMP</b> |
| <sup>4</sup> Property Code<br><b>326778</b>    | <sup>5</sup> Property Name<br><b>PAPAS FRITAS 27 22 FED COM</b>            | <sup>6</sup> Well Number<br><b>711H</b>                |
| <sup>7</sup> OGRID No.<br><b>6137</b>          | <sup>8</sup> Operator Name<br><b>DEVON ENERGY PRODUCTION COMPANY, L.P.</b> | <sup>9</sup> Elevation<br><b>3019.8'</b>               |

<sup>10</sup>Surface Location

| UL or lot no. | Section | Township | Range | Lot Idn | Feet from the | North/South line | Feet from the | East/West line | County |
|---------------|---------|----------|-------|---------|---------------|------------------|---------------|----------------|--------|
| D             | 34      | 23 S     | 29-E  |         | 102           | NORTH            | 968           | WEST           | EDDY   |

<sup>11</sup>Bottom Hole Location If Different From Surface

| UL or lot no. | Section | Township | Range | Lot Idn | Feet from the | North/South line | Feet from the | East/West line | County |
|---------------|---------|----------|-------|---------|---------------|------------------|---------------|----------------|--------|
| D             | 22      | 23 S     | 29 E  |         | 20            | NORTH            | 990           | WEST           | EDDY   |

| <sup>12</sup> Dedicated Acres | <sup>13</sup> Joint or Infill | <sup>14</sup> Consolidation Code | <sup>15</sup> Order No. |
|-------------------------------|-------------------------------|----------------------------------|-------------------------|
| 1280                          |                               |                                  |                         |

No allowable will be assigned to this completion until all interests have been consolidated or a non-standard unit has been approved by the division.

16

**PAPAS FRITAS  
27-22 FED COM 711H**  
ELEV: 3019.8'  
LAT: 32.268311°  
LON: 103.978056°  
N: 461526.41  
E: 651147.73

**FIRST TAKE POINT**  
LAT: 32.268866°  
LON: 103.977989°  
N: 461728.43  
E: 651167.54

**LAST TAKE POINT**  
LAT: 32.297566°  
LON: 103.977994°  
N: 472168.92  
E: 651131.49

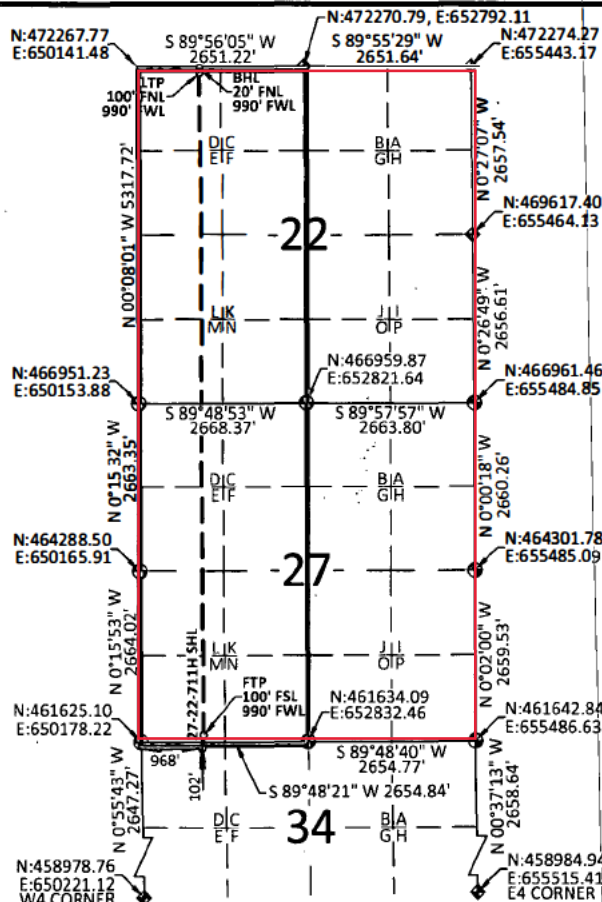
**BOTTOM HOLE LOCATION**  
LAT: 32.297786°  
LON: 103.977994°  
N: 472248.90  
E: 651131.30

Standard Horizontal  
Spacing Unit

- 3" USGLO BRASS CAP  
ON 2.5" IRON PIPE
- 2" USGLO BRASS CAP  
ON 2" IRON PIPE

## NOTES:

- BEARINGS SHOWN ARE GRID BASED ON THE NEW MEXICO STATE PLANE EAST ZONE COORDINATE SYSTEM (3001), NAD 83 (2011), BASED FROM GPS OBSERVATIONS, OCCUPYING A WHS CONTROL POINT (5/8" REBAR), LOCATED AT NORTH: 456034.443, EAST: 653560.641, ELEVATION: 3101.373, DETERMINED BY AN OPUS SOLUTION ON DECEMBER 3RD, 2018.
- DISTANCES DEPICTED HEREON ARE REPORTED AS GROUND DISTANCE IN US SURVEY FEET USING A COMBINED SCALE FACTOR OF 1.000220979
- ELEVATIONS ARE OF NAVD 88 COMPUTED USING GEOID 128.

<sup>17</sup>OPERATOR CERTIFICATION

I hereby certify that the information contained herein is true and complete to the best of my knowledge and belief, and that this organization either owns a working interest or unleased mineral interest in the land including the proposed bottom hole location or has a right to drill this well at this location pursuant to a contract with an owner of such a mineral or working interest, or to a voluntary pooling agreement or a compulsory pooling division

*Jenny Harms* 3-29-2021  
JENNY HARMS

JENNY.HARMS@DVN.COM

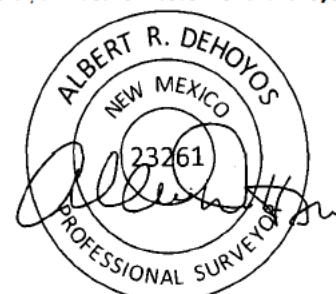
<sup>18</sup>SURVEYOR CERTIFICATION

I hereby certify that the well location shown on this plat was plotted from field notes of actual surveys made by me or under my supervision, and that the same is true and correct to the best of my belief.

03/06/2019

Date of Survey

Signature and Seal of Professional Surveyor:



Certificate No. 23261

Albert Dehoyos

Drawn by: TMW

Checked by: ARD

Date: 04/29/2019

Intent ☒ As Drilled ☐

RECEIVED  
DEC 26 2019  
DISTRICT/ARTESIAO.C.D.

API #

|   |  |                     |
|---|--|---------------------|
| Operator Name:<br>DEVON ENERGY PRODUCTION COMPANY, L.P. | Property Name:<br>PAPAS FRITAS 27-22 FED COM | Well Number<br>711H |
|---|--|---------------------|

## Kick Off Point (KOP)

|                       |               |                 |              |     |                          |                   |             |                  |                |
|-----------------------|---------------|-----------------|--------------|-----|--------------------------|-------------------|-------------|------------------|----------------|
| UL                    | Section<br>34 | Township<br>23S | Range<br>29E | Lot | Feet<br>102              | From N/S<br>NORTH | Feet<br>968 | From E/W<br>WEST | County<br>EDDY |
| Latitude<br>32.268311 |               |                 |              |     | Longitude<br>-103.978056 |                   |             | NAD<br>83        |                |

## First Take Point (FTP)

|                             |               |                  |               |     |                                |                   |             |                  |                |
|-----------------------------|---------------|------------------|---------------|-----|--------------------------------|-------------------|-------------|------------------|----------------|
| UL<br>M                     | Section<br>27 | Township<br>23-S | Range<br>29-E | Lot | Feet<br>100                    | From N/S<br>SOUTH | Feet<br>990 | From E/W<br>WEST | County<br>EDDY |
| Latitude<br>LAT: 32.268866° |               |                  |               |     | Longitude<br>LON: -103.977989° |                   |             | NAD<br>83        |                |

## Last Take Point (LTP)

|                             |               |                  |               |     |                                |                   |             |                  |                |
|-----------------------------|---------------|------------------|---------------|-----|--------------------------------|-------------------|-------------|------------------|----------------|
| UL<br>D                     | Section<br>22 | Township<br>23-S | Range<br>29-E | Lot | Feet<br>100                    | From N/S<br>NORTH | Feet<br>990 | From E/W<br>WEST | County<br>EDDY |
| Latitude<br>LAT: 32.297566° |               |                  |               |     | Longitude<br>LON: -103.977994° |                   |             | NAD<br>83        |                |

Is this well the defining well for the Horizontal Spacing Unit? ☒Is this well an infill well? ☒

If infill is yes provide API if available, Operator name and well number for Defining well for Horizontal Spacing Unit.

API #

|   |  |                     |
|---|--|---------------------|
| Operator Name:<br>Devon Energy Production Company, L.P. | Property Name:<br>Papás Fritas 27-22 FED COM | Well Number<br>621H |
|---|--|---------------------|

KZ 06/29/2018

**District I**

1625 N. French Dr., Hobbs, NM 88240  
Phone:(575) 393-6161 Fax:(575) 393-0720

**District II**

811 S. First St., Artesia, NM 88210  
Phone:(575) 748-1283 Fax:(575) 748-9720

**District III**

1000 Rio Brazos Rd., Aztec, NM 87410  
Phone:(505) 334-6178 Fax:(505) 334-6170

**District IV**

1220 S. St Francis Dr., Santa Fe, NM 87505  
Phone:(505) 476-3470 Fax:(505) 476-3462

**State of New Mexico**  
**Energy, Minerals and Natural Resources**  
**Oil Conservation Division**  
**1220 S. St Francis Dr.**  
**Santa Fe, NM 87505**

COMMENTS

Action 27951

**COMMENTS**

|                                |                        |                        |        |                |              |
|--------------------------------|------------------------|------------------------|--------|----------------|--------------|
| Operator:                      |                        |                        | OGRID: | Action Number: | Action Type: |
| DEVON ENERGY PRODUCTION COMPAN | 333 West Sheridan Ave. | Oklahoma City, OK73102 | 6137   | 27951          | C-102        |

|            |                         |              |
|------------|-------------------------|--------------|
| Created By | Comment                 | Comment Date |
| kpickford  | KP GEO Review 5/14/2021 | 05/14/2021   |

**District I**  
1625 N. French Dr., Hobbs, NM 88240  
Phone:(575) 393-6161 Fax:(575) 393-0720  
**District II**  
811 S. First St., Artesia, NM 88210  
Phone:(575) 748-1283 Fax:(575) 748-9720  
**District III**  
1000 Rio Brazos Rd., Aztec, NM 87410  
Phone:(505) 334-6178 Fax:(505) 334-6170  
**District IV**  
1220 S. St Francis Dr., Santa Fe, NM 87505  
Phone:(505) 476-3470 Fax:(505) 476-3462

**State of New Mexico**  
**Energy, Minerals and Natural Resources**  
**Oil Conservation Division**  
**1220 S. St Francis Dr.**  
**Santa Fe, NM 87505**

CONDITIONS

Action 27951

**CONDITIONS OF APPROVAL**

|   |   |  |                |                         |                       |
|---|---|--|----------------|-------------------------|-----------------------|
| Operator:<br>DEVON ENERGY PRODUCTION COMPAN      333 West Sheridan Ave.      Oklahoma City, OK73102 |   |  | OGRID:<br>6137 | Action Number:<br>27951 | Action Type:<br>C-102 |
| OCD Reviewer  | Condition                                       |  |                |                         |                       |
| kpickford   | Adhere to previous NMOCD Conditions of Approval |  |                |                         |                       |