

Form 3160-5
(June 2015)UNITED STATES
DEPARTMENT OF THE INTERIOR
BUREAU OF LAND MANAGEMENTFORM APPROVED
OMB NO. 1004-0137
Expires: January 31, 2018**SUNDRY NOTICES AND REPORTS ON WELLS**
Do not use this form for proposals to drill or to re-enter an abandoned well. Use form 3160-3 (APD) for such proposals.5. Lease Serial No.
NMSF078212

6. If Indian, Allottee or Tribe Name

7. If Unit or CA/Agreement, Name and/or No.

8. Well Name and No.
ROURKE 1E9. API Well No.
30-045-25892-00-C110. Field and Pool or Exploratory Area
BASIN DAKOTA
FLORA VISTA

11. County or Parish, State

SAN JUAN COUNTY, NM

SUBMIT IN TRIPLICATE - Other instructions on page 2

1. Type of Well

☐ Oil Well ☒ Gas Well ☐ Other2. Name of Operator
HILCORP ENERGY COMPANYContact: AMANDA WALKER
E-Mail: mwalker@hilcorp.com3a. Address
1111 TRAVIS STREET
HOUSTON, TX 770023b. Phone No. (include area code)
Ph: 505-324-5122

4. Location of Well (Footage, Sec., T., R., M., or Survey Description)

Sec 4 T30N R13W NWNW 1000FNL 1000FWL
36.846440 N Lat, 108.215210 W Lon

12. CHECK THE APPROPRIATE BOX(ES) TO INDICATE NATURE OF NOTICE, REPORT, OR OTHER DATA

TYPE OF SUBMISSION	TYPE OF ACTION			
<input type="checkbox"/> Notice of Intent	<input type="checkbox"/> Acidize	<input type="checkbox"/> Deepen	<input type="checkbox"/> Production (Start/Resume)	<input type="checkbox"/> Water Shut-Off
<input checked="" type="checkbox"/> Subsequent Report	<input type="checkbox"/> Alter Casing	<input type="checkbox"/> Hydraulic Fracturing	<input type="checkbox"/> Reclamation	<input type="checkbox"/> Well Integrity
<input type="checkbox"/> Final Abandonment Notice	<input type="checkbox"/> Casing Repair	<input type="checkbox"/> New Construction	<input type="checkbox"/> Recomplete	<input type="checkbox"/> Other
	<input type="checkbox"/> Change Plans	<input checked="" type="checkbox"/> Plug and Abandon	<input type="checkbox"/> Temporarily Abandon	
	<input type="checkbox"/> Convert to Injection	<input type="checkbox"/> Plug Back	<input type="checkbox"/> Water Disposal	

13. Describe Proposed or Completed Operation: Clearly state all pertinent details, including estimated starting date of any proposed work and approximate duration thereof. If the proposal is to deepen directionally or recompleat horizontally, give subsurface locations and measured and true vertical depths of all pertinent markers and zones. Attach the Bond under which the work will be performed or provide the Bond No. on file with BLM/BIA. Required subsequent reports must be filed within 30 days following completion of the involved operations. If the operation results in a multiple completion or recompleat in a new interval, a Form 3160-4 must be filed once testing has been completed. Final Abandonment Notices must be filed only after all requirements, including reclamation, have been completed and the operator has determined that the site is ready for final inspection.

Please see the attached SR P&A for operations conducted to date.

14. I hereby certify that the foregoing is true and correct.

Electronic Submission #538223 verified by the BLM Well Information System
For HILCORP ENERGY COMPANY, sent to the Farmington
Committed to AFMSS for processing by JOE KILLINS on 11/25/2020 (21JK0038SE)

Name (Printed/Typed) AMANDA WALKER

Title OPERATIONS/REGULATORY TECH SR.

Signature (Electronic Submission)

Date 11/20/2020

THIS SPACE FOR FEDERAL OR STATE OFFICE USE

Approved By

ACCEPTEDJOE KILLINS
Title ENGINEER

Date 11/25/2020

Conditions of approval, if any, are attached. Approval of this notice does not warrant or certify that the applicant holds legal or equitable title to those rights in the subject lease which would entitle the applicant to conduct operations thereon.

Office Farmington

Title 18 U.S.C. Section 1001 and Title 43 U.S.C. Section 1212, make it a crime for any person knowingly and willfully to make to any department or agency of the United States any false, fictitious or fraudulent statements or representations as to any matter within its jurisdiction.

(Instructions on page 2)

**** BLM REVISED ** BLM REVISED ** BLM REVISED ** BLM REVISED ** BLM REVISED ****

Revisions to Operator-Submitted EC Data for Sundry Notice #538223

	Operator Submitted	BLM Revised (AFMSS)
Sundry Type:	ABD NOI	ABD SR
Lease:	NMSF078212	NMSF078212
Agreement:		
Operator:	HILCORP ENERGY 1111 TRAVIS ST. HOUSTON, TX 77002 Ph: 505-324-5122	HILCORP ENERGY COMPANY 1111 TRAVIS STREET HOUSTON, TX 77002 Ph: 713.209.2400
Admin Contact:	AMANDA WALKER OPERATIONS/REGULATORY TECH SR. E-Mail: mwalker@hilcorp.com Ph: 505-324-5122	AMANDA WALKER OPERATIONS/REGULATORY TECH SR. E-Mail: mwalker@hilcorp.com Ph: 505-324-5122
Tech Contact:	AMANDA WALKER OPERATIONS/REGULATORY TECH SR. E-Mail: mwalker@hilcorp.com Ph: 505-324-5122	AMANDA WALKER OPERATIONS/REGULATORY TECH SR. E-Mail: mwalker@hilcorp.com Ph: 505-324-5122
Location:		
State:	NM	NM
County:	SAN JUAN	SAN JUAN
Field/Pool:	DK / GALLUP	BASIN DAKOTA FLORA VISTA
Well/Facility:	ROURKE 1E Sec 4 T30N R13W Mer NMP NWNW 1000FNL 1000FWL	ROURKE 1E Sec 4 T30N R13W NWNW 1000FNL 1000FWL 36.846440 N Lat, 108.215210 W Lon

Rourke 1E
3004525892
P&A SR
NMSF078212

8/7/2020: CHANGE OF PLANS PRIOR TO RU: 1). Set the CICR on Plug #1 at 6030', dump bail cmt in one run on top of CICR. WOC and tag. 2). Set the CICR on Plug #2 at 5158'. PT the csg. dump bail cmt in one run on top of CICR. WOC and tag (if the csg does not pressure test). 3). Remove inside/out plug on Plug #3, replace with a 20 sx bal plug f/ 4330-4210'. There is cmt on the backside above and below this plug and all formations above and below the Mancos are covered up. **Deferred to the BLM – Approved.** 4). Increase plug volume on Plug #4 f/ 72 to 99 sx (per BLM COAs). 5). No changes to Plug #5. 6). Remove inside/out plug on Plug #6, replace with 41 sx bal plug f/ 1160-850'. A CBL run in 12/2019 shows cmt up to at least 950' and the primary cement job indicated cement returns to surface. This plug will combine the OCD and BLM tops – **Agreed to by the BLM.** 7). Attempt inside/out plug on Plug #7. If the csg pressure tests and the perforations at 607' pressure up, pump 18 sx balanced plug f/ 607-507' to isolate the Kirtland top – **Agreed to by the BLM.** 7). Increase plug volume on Plug #8 f/ 110 to 165 sx (per the BLM), but move the perforations up to 430' due to CBL response at 442'. Similar to Plug #7, if the perforations at 430' pressure up, pump a balanced plug from 430' to surface – **Agreed to by the BLM**

9/21/2020: MIRU.

9/22/2020: CK PRESSURES. (TBG: 0 PSI, CSG: 120 PSI, BH: 17 PSI). ND WH. NU BOPE, FUNCTION & PT BOPE, TST GOOD. LOAD & PT TBG, TST GOOD. UNLAND TBG STRING. MU MILL, TIH T/6050'. POOH & LD MILL. SDFN.

9/30/2020: CK PRESSURES. (TBG: 0 PSI, CSG: 120 PSI, BH: 0 PSI). PU 5 ½" CICR. TIH T/6030' & SET RETAINER. MIXED AND PUMPED **PLUG #1** AS BALANCED PLUG TO COVER DAKOTA FORMATION W/ 20 SKS 15.8 PPG 1.15 YIELD 4.09 BBLS SLURRY F/ 6030' TO 5858'. DISPLACING W/2 BBLS. WOC 4 HRS. TIH & TAG TOC @ 5841'. TOO H, LD SETTING TOOL. PU 5 ½" CICR TIH T/5158' & SET RETAINER. ROLL HOLE W/120 BBLS FRESH H2O. MIXED AND PUMPED **PLUG #2** AS BALANCED PLUG TO COVER GALLUP FORMATION W/ 20 SKS 15.8 PPG 1.15 YIELD 4.09 BBLS SLURRY F/ 5158' TO 4986' DISPLACING W/ 18.5 BBLS. REVERSE CIRC 25 BBLS. STOOD BACK 25 STANDS. WOC OVERNIGHT. SL. SDFN.

9/30/2020: UPDATE EMAIL SENT TO OCD & BLM: DUE TO ECON WE OPTED TO PMP & TAG FIRST 2 PLUGS W/TBG AS OPPOSED TO DMP BAILING & INCREASED SK COUNT TO 20 SKS WHICH WILL PLACE ON TOP OF DK & GP RETAINERS.

10/1/2020: CK PRESSURES. (TBG: 0 PSI, CSG: 0 PSI, BH: 0 PSI). TIH & TAG TOC @ 4983'. POOH SB ENTIRE TBG STRING. LD RETAINER SETTING TOOL. TIH OPEN ENDED T/4338'. MIXED AND PUMPED **PLUG #3** AS BALANCED PLUG TO COVER MANCOS FORMATION W/ 25 SKS 15.8 PPG 1.15 YIELD 5.1 BBLS SLURRY F/ 4338' TO 4123' DISPLACING W/ 15 BBLS. LD 9 JTS. WOC 4 HRS. TIH & TAG TOC @ 4140'. SLIGHT DRINK @ DV TOOL ACTICIPATED. TOC STILL ABV REQUIRED DEPTH OF 4210'. ONSITE BLM REP, APPROVED TO PROCEED. LOAD HOLE W/4 BBLS & PT CSG STRING T/600 PSI FOR 30 MINS, TST GOOD. LD 30 JTS T/3175'. MIXED AND PUMPED **PLUG #4** AS BALANCED PLUG TO COVER MESAVERDE AND CHACRA FORMATION W/ 110 SKS 15.8 PPG 1.15 YIELD 22.59 BBLS SLURRY F/ 3175' TO 2229' DISPLACING W/ 8 BBLS. LD 49 JTS T/1586'. MIXED AND PUMPED **PLUG #5** AS BALANCED PLUG TO COVER PICTURED CLIFFS FORMATION W/ 20 SKS 15.8 PPG 1.15 YIELD 4.1 BBLS SLURRY F/ 1586' TO 1414' DISPLACING W/ 5 BBLS. LD 13 JTS T/1160'. MIXED AND PUMPED **PLUG #6** AS BALANCED PLUG TO COVER FRUITLAND

Rourke 1E
3004525892
P&A SR
NMSF078212

FORMATION W/ 42 SKS 15.8 PPG 1.15 YIELD 8.6 BBLS SLURRY F/ 1160' TO 799' DISPLACING W/ 2 BBLS.
LD 20 JTS POOH. SDFN.

10/2/2020: CK PRESSURES. (TBG: 0 PSI, CSG: 0 PSI, BH: 0 PSI). RIH & PERF 4 HOLES @ 607'. ATTEMPT TO EST INJECTION RATE, NO INJECTION. MIXED AND PUMPED **PLUG #7** AS BALANCED PLUG TO COVER KIRTLAND FORMATION W/ 22 SKS 15.8 PPG 1.15 YIELD 4.5 BBLS SLURRY F/ 650' TO 451' DISPLACING W/ 2.5 BBLS. RIH & PERF 4 HOLES @ 430'. ATTEMPT TO EST INJECTION RATE, NO INJECTION. MIXED AND PUMPED **PLUG #8** AS BALANCED PLUG TO OJIO & SURF CSG SHOE W/ 62 SKS 15.8 PPG 1.15 YIELD 12.69 BBLS SLURRY F/ 487' TO SURFACE. CIRC GOOD CEMENT RETURNS TO SURFACE. LD 15 JTS. SIW. SDFWE.

10/5/2020: TROUBLE CALL: PERFORATED FOR SQZ @ 430' PER COA'S, UNABLE TO EIR. RECEIVED APPROVAL FOR INSIDE PLUG FROM BLM REP ONSITE AND TEXT APPROVAL FROM MK @ OCD.

10/5/2020: CK PRESSURES. (TBG: 0 PSI, CSG: 0 PSI, BH: 5 PSI). BH HAD 5 PSI THAT BUILT UP OVER WE. BD TO SLIGHT BLOW. TAG CMT @ 29 FT. VENTED FOR 2 HRS. SIW FOR 1 HR & MONITORED PRESSURE. PRESSURE ONLY CAME UP TO 2 PSI. REPEATED FLOW TEST & CONTACTED BLM/OCD & HEC REPS. NMOCD IS REQUIRING A 24 HR VENT. WILL SI WELL @ 1 PM TOMORROW & MONITOR FOR 2 HRS. RDRR.

10/8/2020: 1). SI the well for an additional 24 hrs (if it is currently SI, keep it there), record final BU pressure (take a picture of the gauge and text it to me). 2). Open the well up at 4 pm today (October 8th) and let it vent for 1 week. 3). On Thursday, October 15th, SI the well for 24 hrs and record beginning (if any) and ending pressures (take a picture of the gauge and text it to me). 4). Open the well back up to vent on Friday, October 16th for 1 week. 5). On Thursday, October 22nd, SI the well for 24 hrs and record beginning (if any) and ending pressures (take a picture of the gauge and text it to me). APPROVED BY MONICA OCD AND JOE AT BLM.

10/20/2020: COMPLETED FIRST WEEK OF FLOW TEST, SHUT IN THE WELL ON THURSDAY & RECORDED PRESSURE AFTER 24 HRS. PRESSURE WAS 65.9 PSI. EMAILED PICTURE OF CRYSTAL GAUGE TO OCD/BLM. WILL REPEAT SI PROCESS ON THURS/FRI THIS WEEK.

10/27/2020: The well was then SI for 24hrs. Final pressure was 63.9 psi. A picture emailed to OCD/BLM.

HILCORP WILL SUBMIT AN NOI FOR REMEDIATION.

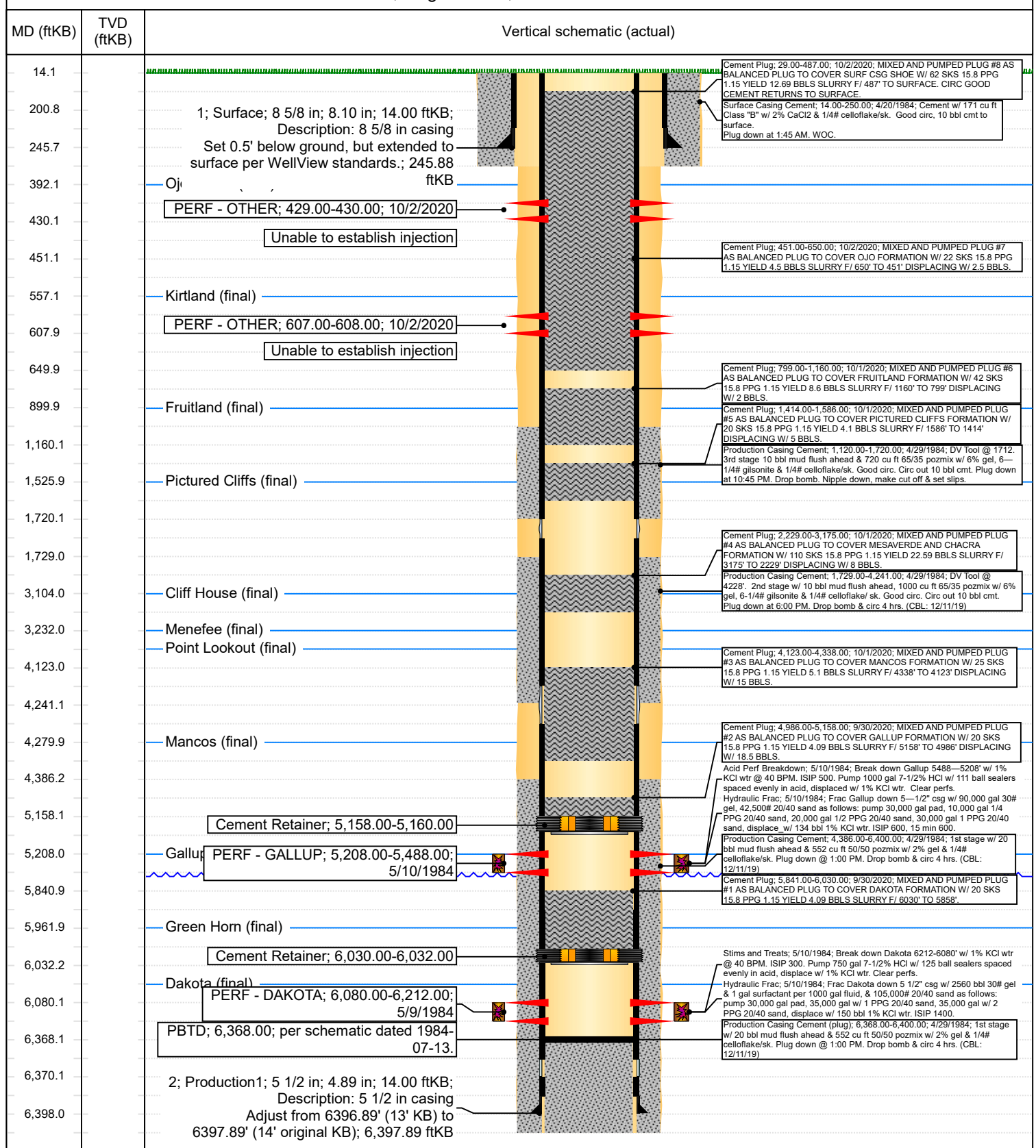


Current Schematic

Well Name: **ROURKE #1E**

API / UWI 3004525892	Surface Legal Location D-4-30N-13W	Field Name BASIN	Route 0205	State/Province NEW MEXICO	Well Configuration Type Vertical
Ground Elevation (ft) 5,551.00	Original KB/RT Elevation (ft) 5,565.00	KB-Ground Distance (ft) 14.00	KB-Casing Flange Distance (ft)	KB-Tubing Hanger Distance (ft)	

Vertical, Original Hole, 11/13/2020 7:44:46 AM



District I
1625 N. French Dr., Hobbs, NM 88240
Phone:(575) 393-6161 Fax:(575) 393-0720
District II
811 S. First St., Artesia, NM 88210
Phone:(575) 748-1283 Fax:(575) 748-9720
District III
1000 Rio Brazos Rd., Aztec, NM 87410
Phone:(505) 334-6178 Fax:(505) 334-6170
District IV
1220 S. St Francis Dr., Santa Fe, NM 87505
Phone:(505) 476-3470 Fax:(505) 476-3462

State of New Mexico
Energy, Minerals and Natural Resources
Oil Conservation Division
1220 S. St Francis Dr.
Santa Fe, NM 87505

CONDITIONS

Action 19146

CONDITIONS OF APPROVAL

Operator: HILCORP ENERGY COMPANY 1111 Travis Street Houston, TX77002				OGRID: 372171	Action Number: 19146	Action Type: C-103P
OCD Reviewer				Condition		
ahvermersch				None		