

District I
1625 N. French Dr., Hobbs, NM 88240
Phone: (575) 393-6161 Fax: (575) 393-0720

District II
811 S. First St., Artesia, NM 88210
Phone: (575) 748-1283 Fax: (575) 748-9720

District III
1000 Rio Brazos Road, Aztec, NM 87410
Phone: (505) 334-6178 Fax: (505) 334-6170

District IV
1220 S. St. Francis Dr., Santa Fe, NM 87505
Phone: (505) 476-3460 Fax: (505) 476-3462

State of New Mexico

Energy Minerals and Natural Resources

Oil Conservation Division

1220 South St. Francis Dr.

Santa Fe, NM 87505

Form C-101
Revised July 18, 2013

☐ AMENDED REPORT

APPLICATION FOR PERMIT TO DRILL, RE-ENTER, DEEPEN, PLUGBACK, OR ADD A ZONE

¹ Operator Name and Address SOLIS PARTNERS L.L.C. P.O. BOX 5790 MIDLAND TX 79704		² OGRID Number 330238
		³ API Number 30-005-62795
⁴ Property Code 329356	⁵ Property Name PATHFINDER AFT STATE	⁶ Well No. 9

⁷ Surface Location

UL - Lot	Section	Township	Range	Lot Idn	Feet from	N/S Line	Feet From	E/W Line	County
N	21	10-S	27-E		650	SOUTH	2,200	WEST	CHAVES

⁸ Proposed Bottom Hole Location

UL - Lot	Section	Township	Range	Lot Idn	Feet from	N/S Line	Feet From	E/W Line	County
N	21	10-S	27-E		650	SOUTH	2,200	WEST	CHAVES

⁹ Pool Information

Pool Name	Pool Code
DIABLO; SAN ANDRES	17640

Additional Well Information

¹¹ Work Type P	¹² Well Type O	¹³ Cable/Rotary R	¹⁴ Lease Type S	¹⁵ Ground Level Elevation 3,822'
¹⁶ Multiple NO	¹⁷ Proposed Depth 2,220'	¹⁸ Formation SAN ANDRES	¹⁹ Contractor LIBERTY PUMP	²⁰ Spud Date 05/17/2021
Depth to Ground water		Distance from nearest fresh water well		Distance to nearest surface water

x ☐ We will be using a closed-loop system in lieu of lined pits²¹ Proposed Casing and Cement Program

Type	Hole Size	Casing Size	Casing Weight/ft	Setting Depth	Sacks of Cement	Estimated TOC
PROD CSG	9 1/2"	7 5/8"	29.5# & 26.4# N-80 &	6,410'	STAGE 1 - 725 sx	4,011' (Circ'd 125 sx)
(actual csg &			J-55		STAGE 2 - 1100 sx	2,185' (Circ'd 200 sx)
cmt data)					DV Tool @ 4,011'	

Casing/Cement Program: Additional Comments

--

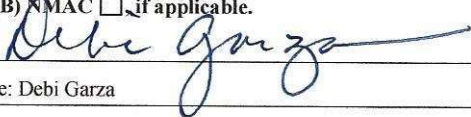
²² Proposed Blowout Prevention Program

Type	Working Pressure	Test Pressure	Manufacturer
MANUAL/HYDRAULIC	5,000 psi	5,000 psi	CAMERON

²³ I hereby certify that the information given above is true and complete to the best of my knowledge and belief.

I further certify that I have complied with 19.15.14.9 (A) NMAC ☐ and/or 19.15.14.9 (B) NMAC ☐ if applicable.

Signature:



Printed name: Debi Garza

Title: Regulatory Coordinator

E-mail Address: debi.garza@solispartnersllc.com

Date: 05/03/2021

Phone: 432-888-1880

OIL CONSERVATION DIVISION

Approved By:

Title:

Approved Date:

Expiration Date:

Conditions of Approval Attached

PATHFINDER AFT STATE #9: RECOMPLETE WELL FROM WOLFCAMP TO SAN ANDRES:

- MIRU workover rig.
- Clean-Out wellbore to PBTD at +/- 5,958' with bit & casing scraper. Circulate hole clean using reverse unit and tank.
- Run cased-hole Cement Bond Log across San Andres from 1,500'-5,600'.
- Set 7-5/8" CIBP on wireline above Wolfcamp at 5,450' and dump bail 35' cement cap on plug. WOC & tag
Wolfcamp perms 5508'-5762' (51' at 2 spf = 102 perms).
- Pressure test 7-5/8" casing and CIBP to 500 psig for 30 minutes with chart.
- Set 7-5/8" CIBP on wireline at 2,220' and dump bail 35' cement cap on plug. PBTD = 2,185' (TOC).
- Pressure test 7-5/8" casing and CIBP to 500 psig for 30 minutes with chart. WOC & tag
- Perforate San Andres: 1,974'-2,125' (94' @ 2spf - 188 perms).
- Acidize SA perms with approx. 18,000 gal 20% NEFE HCl + additives.
- Flowback well, swab if necessary, to clean up.
- RIH with 2-3/8" 4.7# J-55 EUE tubing, rods, and pump. Hang well on for production.
- RDMO workover rig.
- Test well.

Spot 25 sx Cmt @ 4878 - 4778'. T of Abo

Spot 25 sx Cmt @ 2622' - 2522'. T of Glorietta

CONDITIONS FOR PLUGGING AND ABANDONMENT

OCD - Southern District

The following is a guide or checklist in preparation of a plugging program, this is not all inclusive and care must be exercised in establishing special plugging programs in unique and unusual cases, **Notify NMOCD District Office II at (575)-748-1283 at least 24 hours before beginning work. After MIRU rig will remain on well until it is plugged to surface. OCD is to be notified before rig down. Company representative will be on location during plugging procedures.**

1. A notice of intent to plug and abandon a wellbore is required to be approved before plugging operations are conducted. A cement evaluation tool is required in order to ensure isolation of producing formations, protection of water and correlative rights. A cement bond log or other accepted cement evaluation tool is to be provided to the division for evaluation if one has not been previously run or if the well did not have cement circulated to surface during the original casing cementing job or subsequent cementing jobs. Insure all bradenheads have been exposed, identified and valves are operational prior to rig up.
2. Closed loop system is to be used for entire plugging operation. Upon completion, contents of steel pits are to be hauled to a permitted disposal location.
3. Trucking companies being used to haul oilfield waste fluids to a disposal – commercial or private – shall have an approved NMOCD C-133 permit. A copy of this permit shall be available in each truck used to haul waste products. It is the responsibility of the operator as well as the contractor, to verify that this permit is in place prior to performing work. Drivers shall be able to produce a copy upon request of an NMOCD Field inspector.
4. Filing a subsequent C-103 will serve as notification that the well has been plugged.
5. A final C-103 shall be filed (and a site inspection by NMOCD Inspector to determine if the location is satisfactorily cleaned, all equipment, electric poles and trash has been removed to Meet NMOCD standards) before bonding can be released.
6. If work has not begun within 1 Year of the approval of this procedure, an extension request must be file stating the reason the well has not been plugged.
7. Squeeze pressures are not to exceed 500 psi, unless approval is given by NMOCD.
8. Produced water **will not** be used during any part of the plugging operation.
9. Mud laden fluids must be placed between all cement plugs mixed at 25 sacks per 100 bbls of water.
10. All cement plugs will be a minimum of 100' in length or a minimum of 25 sacks of cement, whichever is greater. 50' of calculated cement excess required for inside casing plugs and 100% calculated cement excess required on outside casing plugs.
11. Class 'C' cement will be used above 7500 feet.
12. Class 'H' cement will be used below 7500 feet.
13. A cement plug is required to be set 50' above and 50' below, casing stubs, DV tools, attempted casing cut offs, cement tops outside casing, salt sections and anywhere the casing is perforated, these plugs require a 4 hour WOC and then will be tagged
14. All Casing Shoes Will Be Perforated 50' below shoe depth and Attempted to be Squeezed, cement needs to be 50' above and 50' Below Casing Shoe inside the Production Casing.

16. When setting the top out cement plug in production, intermediate and surface casing, wellbores should remain full at least 30 minutes after plugs are set
17. A CIBP is to be set within 100' of production perforations, capped with 100' of cement, WOC 4 hours and tag.
18. A CIBP with 35' of cement may be used in lieu of the 100' plug if set with a bailer. This plug will be placed within 100' of the top perforation, (WOC 4 hrs and tag).
19. No more than 3000' is allowed between cement plugs in cased hole and 2000' in open hole.
20. Some of the Formations to be isolated with cement plugs are: These plugs to be set to isolate formation tops
 - A) Fusselman
 - B) Devonian
 - C) Morrow
 - D) Wolfcamp
 - E) Bone Springs
 - F) Delaware
 - G) Any salt sections
 - H) Abo
 - I) Glorieta
 - J) Yates.
 - K) **Potash---** (In the R-111-P Area (Potash Mine Area), a solid cement plug must be set across the salt section. Fluid used to mix the cement shall be saturated with the salts that are common to the section penetrated and in suitable proportions, not more than 3% calcium chloride (by weight of cement) will be considered the desired mixture whenever possible, WOC 4 hours and tag, this plug will be 50' below the bottom and 50' above the top of the Formation.
21. If cement does not exist behind casing strings at recommended formation depths, the casing can be cut and pulled with plugs set at recommended depths. If casing is not pulled, perforations will be shot and cement squeezed behind casing, WOC and tagged. These plugs will be set 50' below formation bottom to 50' above formation top inside the casing

DRY HOLE MARKER REQUIREMENTS

The operator shall mark the exact location of the plugged and abandoned well with a steel marker not less than four inches in diameter, 3' below ground level with a plate of at least ¼" welded to the top of the casing and the dry hole marker welded on the plate with the following information welded on the dry hole marker:

1. Operator name 2. Lease and Well Number 3. API Number 4. Unit Letter 5. Quarter Section (feet from the North, South, East or West) 6. Section, Township and Range 7. Plugging Date 8. County (SPECIAL CASES)-----AGRICULTURE OR PRARIE CHICKEN BREEDING AREAS

In these areas, a below ground marker is required with all pertinent information mentioned above on a plate, set 3' below ground level, a picture of the plate will be supplied to NMOCD for record, the exact location of the marker (longitude and latitude by GPS) will be provided to NMOCD (We typically require a current survey to verify the GPS)

SITE REMEDIATION DUE WITHIN ONE YEAR OF WELL PLUGGING COMPLETION

District I
1625 N. French Dr., Hobbs, NM 88240
Phone: (575) 393-6161 Fax: (575) 393-0720
District II
811 S. First St., Artesia, NM 88210
Phone: (575) 748-1283 Fax: (575) 748-9720
District III
1000 Rio Brazos Road, Aztec, NM 87410
Phone: (505) 334-6178 Fax: (505) 334-6170
District IV
1220 S. St. Francis Dr., Santa Fe, NM 87505
Phone: (505) 476-3460 Fax: (505) 476-3462

State of New Mexico
Energy, Minerals & Natural Resources Department
OIL CONSERVATION DIVISION
1220 South St. Francis Dr.
Santa Fe, NM 87505

Form C-102
Revised August 1,
2011
Submit one copy to appropriate
District Office

☐ AMENDED REPORT

WELL LOCATION AND ACREAGE DEDICATION PLAT

¹ API Number 30-005-62795		² Pool Code 17640		³ Pool Name DIABLO, SAN ANDRES	
⁴ Property Code 329356		⁵ Property Name PATHFINDER AFT STATE			⁶ Well Number 9
⁷ OGRID No. 330238		⁸ Operator Name SOLIS PARTNERS, L.L.C.			⁹ Elevation 3,822'

¹⁰ Surface Location									
UL or lot no. N	Section 21	Township 10-S	Range 27-E	Lot Idn	Feet from the 650	North/South line SOUTH	Feet from the 2,200	East/West line WEST	County CHAVEZ

¹¹ Bottom Hole Location If Different From Surface									
UL or lot no. N	Section 21	Township 10-S	Range 27-E	Lot Idn	Feet from the 650	North/South line SOUTH	Feet from the 2,200	East/West line WEST	County CHAVEZ
¹² Dedicated Acres 40		¹³ Joint or Infill		¹⁴ Consolidation Code		¹⁵ Order No.			

No allowable will be assigned to this completion until all interests have been consolidated or a non-standard unit has been approved by the division.

<div style="text-align: center;"> </div>	<p>¹⁷ OPERATOR CERTIFICATION</p> <p>I hereby certify that the information contained herein is true and complete to the best of my knowledge and belief, and that this organization either owns a working interest or unleased mineral interest in the land including the proposed bottom hole location or has a right to drill this well at this location pursuant to a contract with an owner of such a mineral or working interest, or to a voluntary pooling agreement or a compulsory pooling order heretofore entered by the division.</p> <p style="text-align: right;">Debi Garza 1/26/2021</p> <p>Signature _____ Date _____</p> <p>Debi Garza Printed Name _____</p> <p>debi.garza@solispartnersllc.com E-mail Address _____</p>			
	<p>¹⁸ SURVEYOR CERTIFICATION</p> <p>I hereby certify that the well location shown on this plat was plotted from field notes of actual surveys made by me or under my supervision, and that the same is true and correct to the best of my belief.</p> <p>_____ Date of Survey</p> <p>_____ Signature and Seal of Professional Surveyor:</p> <p>_____ Certificate Number</p>			

District I
1625 N. French Dr., Hobbs, NM 88240
District II
811 S. First St., Artesia, NM 88210
District III
1000 Rio Brazos Road, Aztec, NM 87410
District IV
1220 S. St. Francis Dr., Santa Fe, NM 87505

State of New Mexico
Energy, Minerals and Natural Resources Department
Oil Conservation Division
1220 South St. Francis Dr.
Santa Fe, NM 87505

Submit Original
to Appropriate
District Office

GAS CAPTURE PLAN

Date: 3/10/2021

☒ Original Operator & OGRID No.: [330238] SOLIS PARTNERS L.L.C.____
☐ Amended - Reason for Amendment: _____

This Gas Capture Plan outlines actions to be taken by the Operator to reduce well/production facility flaring/venting for new completion (new drill, recomple to new zone, re-frac) activity.

Note: Form C-129 must be submitted and approved prior to exceeding 60 days allowed by Rule (Subsection A of 19.15.18.12 NMAC).

Well(s)/Production Facility – Name of facility

The well(s) that will be located at the production facility are shown in the table below.

Well Name	API	Well Location (ULSTR)	Footages	Expected MCF/D	Flared or Vented	Comments
PATHFINDER AFT STATE #9	30-005-62795	N-21-10S-27E	0650S 2200W	10	NONE	FLOW TO BATTERY & SALES METER

Gathering System and Pipeline Notification

Well(s) will be connected to a production facility after flowback operations are complete, if gas transporter system is in place. The gas produced from production facility is dedicated to IACX ROSWELL and will be connected to IACX ROSWELL low pressure gathering system located in CHAVEZ County, New Mexico. It will require 0 ' of pipeline to connect the facility to low pressure gathering system. SOLIS PARTNERS L.L.C. provides (periodically) to IACX ROSWELL a drilling, completion and estimated first production date for wells that are scheduled to be drilled in the foreseeable future. In addition, SOLIS PARTNERS L.L.C. and IACX ROSWELL have periodic conference calls to discuss changes to drilling and completion schedules. Gas from these wells will be processed at IACX PATHFINDER AMINE Processing Plant located in Sec. 21, Twn. 10S, Rng. 27E, CHAVEZ County, New Mexico. The actual flow of the gas will be based on compression operating parameters and gathering system pressures.

Flowback Strategy

After the fracture treatment/completion operations, well(s) will be produced to temporary production tanks and gas will be flared or vented. During flowback, the fluids and sand content will be monitored. When the produced fluids contain minimal sand, the wells will be turned to production facilities. Gas sales should start as soon as the wells start flowing through the production facilities, unless there are operational issues on IACX ROSWELL system at that time. Based on current information, it is SOLIS PARTNER L.L.C.'s belief the system can take this gas upon completion of the well(s).

Safety requirements during cleanout operations from the use of underbalanced air cleanout systems may necessitate that sand and non-pipeline quality gas be vented and/or flared rather than sold on a temporary basis.

Alternatives to Reduce Flaring

Below are alternatives considered from a conceptual standpoint to reduce the amount of gas flared.

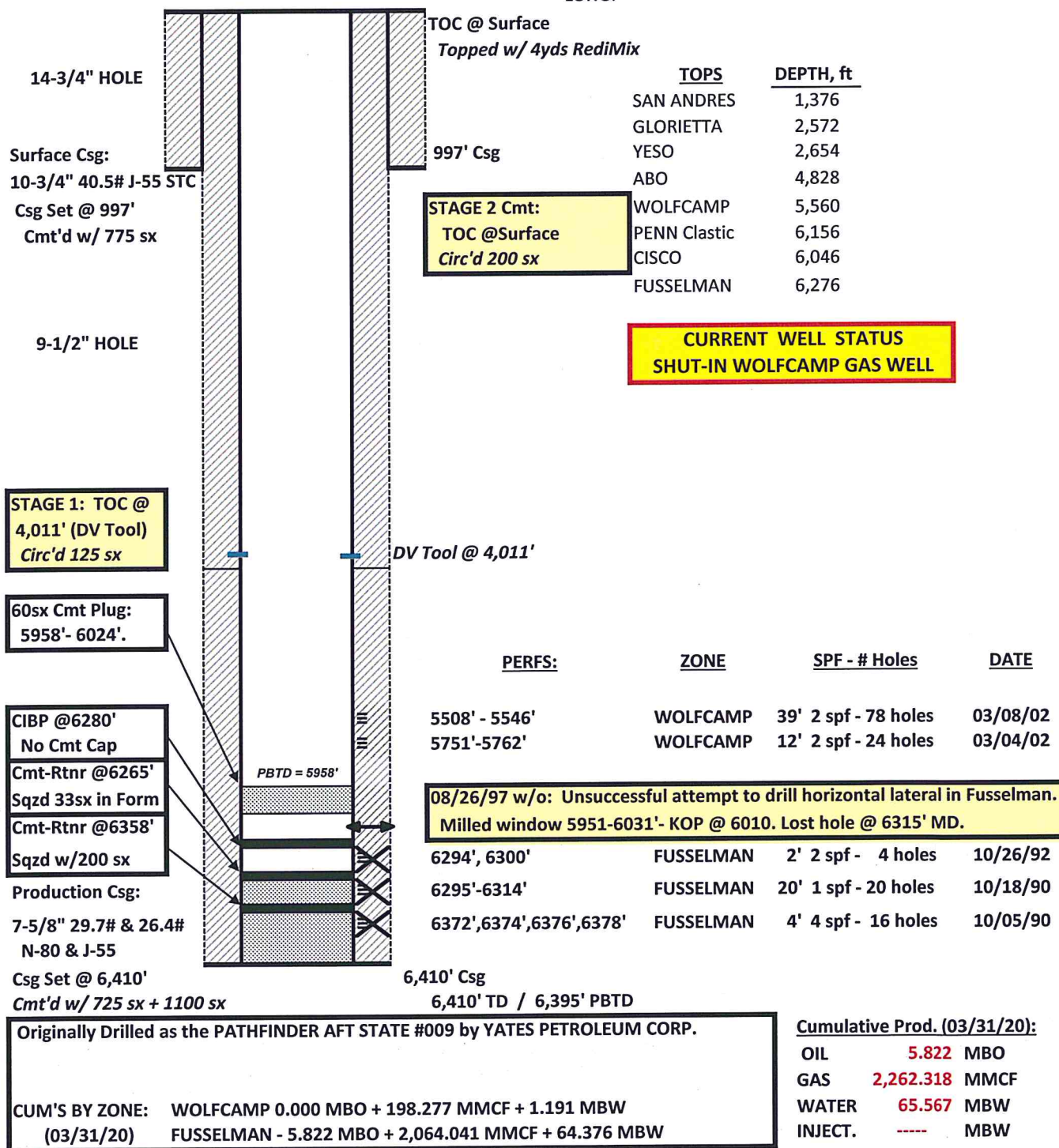
- Power Generation – On lease
 - Only a portion of gas is consumed operating the generator, remainder of gas will be flared
- Compressed Natural Gas – On lease
 - Gas flared would be minimal, but might be uneconomical to operate when gas volume declines
- NGL Removal – On lease
 - Plants are expensive, residue gas is still flared, and uneconomical to operate when gas volume declines

SOLIS PARTNERS, LLC

WELLBORE DIAGRAM

Lease/Well No.: **PATHFINDER AFT STATE #009** ELEVATION, GL: **3,822.0** ft
 Location: **650' FSL & 2,200' FWL**
UL: N, SEC: 21, T: 10-S, R: 27-E FIELD: **DIABLO - WOLFCAMP (GAS)**
CHAVES County, NM
 LEASE No.: **State LG-5246** Spudded: **9/5/1990**
 API No.: **30-005-62795** Drlg Stopped: **9/26/1990**
 Completed: **10/22/1990**
 LAT:
 LONG:

ROTARY RIG



HPS: 12/15/2020

PATHFINDER AFT STATE #009**PERFORATION DETAILS**

<u>ZONE</u>	<u>PERFS</u>	<u>FT</u>	<u>SPF</u>	<u>No. of Perfs</u>	<u>DATE</u>
FUSSELMAN (1st Perfs)	6372', 6374', 6376', 6378'	4	4	16	10/05/90 500 gal 15% NEFE HCl
FUSSELMAN (2nd Perfs)	6295'-6314'	20	1	20	10/18/90 1,500 gal 15% NEFE HCl

FUSSELMAN	6372' - 6314' (OA)	24		36	11/30/88
-----------	--------------------	----	--	----	----------

INITIAL PRODUCTION - FUSSELMAN 6372'-6314' (OA): OCTOBER-1990

10/22/92 WORKOVER: SET CMT RTNR @ 6,358'
 SQZ'D PERFS 6372'-6378' w/ 140 sx Cmt to 2,000 psig
 SET CMT RTNR @ 6,265'
 SQZ'D PERFS 6295'-6312' w/ 33 sxs Cmt in Form to 3,000 psig

FUSSELMAN (3rd Perfs)	Used Sand Jet Perforator to cut Holes at the following depths:				
	6294'	1	2	2	10/26/92 (approx. date)
	6300'	1	2	2	10/26/92 (approx. date)
FUSSELMAN	6294' - 6300' (OA)	2	2	4	10/26/92

08/01/93 WORKOVER: (approx. date) SUSPECTED WATER CHANNEL FROM BELOW.
 SET CMT RTNR @ 6240'
 SQZ'D PERFS 6294'-6300' w/ 4,000 gal Pad + 10,000 gal Matrol +
 400 gal Diesel Spacer + 630 gal MOC/One Cmt + 300 gal Diesel +
 50 sx CI H Cmt. SQZ'D to 1,800 psig.
 DRILL OUT CMT RTNR
 PERF'd 2 SQZ PERFS @ 6340'. COULD NOT PUMP IN.
 USE SAND JET PERFORATOR TO RE-CUT 2 PERFS @ 6294' & 6300'.
 PUMPED 250 gal 15% NEFE HCl INTO EACH PERF.
 SWABBED WELL & RE-ACIDIZED w/ 500 gal 15% NEFE HCl.
 RETURNED WELL TO PRODUCTION.

08/24/93 WORKOVER: ACIDIZED PERFS 6294'-6300' w/ 3,000 gal 15% NEFE HCl
 RAN SUB-PUMP IN WELL TO HANDLE HIGH WATER PRODUCTION.

08/26/97 WORKOVER: UNSUCCESSFUL ATTEMPT TO DRILL 1,000' HORIZONTAL LATERAL
 IN FUSSELMAN.
 SET CIBP @ 6280' (ABOVE FUSS PERFS 6294'-6300')
 MILLED WINDOW IN 7-5/8" CSG: 5951'-6031'.
 KICKED-OFF S/T FOR LATERAL @ 6010'.
 DRILLED S/T LATERAL TO 6315' (MD). TRIP FOR NEW MUD MOTOR.
 LOST HOLE DUE TO HEAVING SHALE - UNABLE TO RE-ENTER.
 SET 60 sx CMT PLUG IN 7-5/8" CSG @ 5958'-6024'.
 SUSPENDED OPERATIONS ON WELL: 09/19/1997.

03/01/2002 WORKOVER: RECOMPLETE WELL TO WOLFCAMP.
 SET CIBP IN 7-5/8" CSG @ 5,910' & CAP w/ 10' OF CMT.
 PBTD NOW = 5,900'
 PERFORATE & ACIDIZE WOLFCAMP.

PATHFINDER AFT STATE #009**PERFORATION DETAILS (Continued)**

WOLFCAMP 5751'-5762' 12 2 24 03/04/02
 (1st Perfs) 1,100 gal 7.5% NEFE HCl

03/08/02: SET PKR WITH BLANKING PLUG @ 5680'.

WOLFCAMP 5508"-5546' 39 2 78 03/08/02
 (2nd Perfs) 1,900 gal 7.5% NEFE HCl

INITIAL PRODUCTION - WOLFCAMP: 03/18/2002 - 5508'-5546' PERFS ONLY

04/16/2002 WELL TEST: 0 BOPD + 210 MCFD + 0 BWPD, FTP = 270 psig on 12/64" chk.

05/09/2002 WORKOVER: FRAC WOLFCAMP PERFS @ 5508'-5546'
 SET CIBP @ 5735' & CAP w/ 35' OF CMT.
 NEW PBTD = 5,700'.
 FRAC WOLFCAMP PERFS 5508'-5546'
 w/ 75,000 gal 40# Viking Gel + 115,400# 20/40 SAND.
 NO WELL TESTS REPORTED.

07/31/2002 WORKOVER: COMMINGLE BOTH SETS OF WOLFCAMP PERFS.
 DRILLED OUT CIBP @ 5735' & CLEAN-OUT WELL TO 5910'
 COMMINGLED BOTH SETS OF WOLFCAMP PERFS TO PRODUCTION.

WOLFCAMP 5508'-5546' 39 2 78 03/08/02

WOLFCAMP 5751'-5762' 12 2 24 03/04/02

WOLFCAMP 5508' - 5762' (OA) 51 2 102 07/31/02

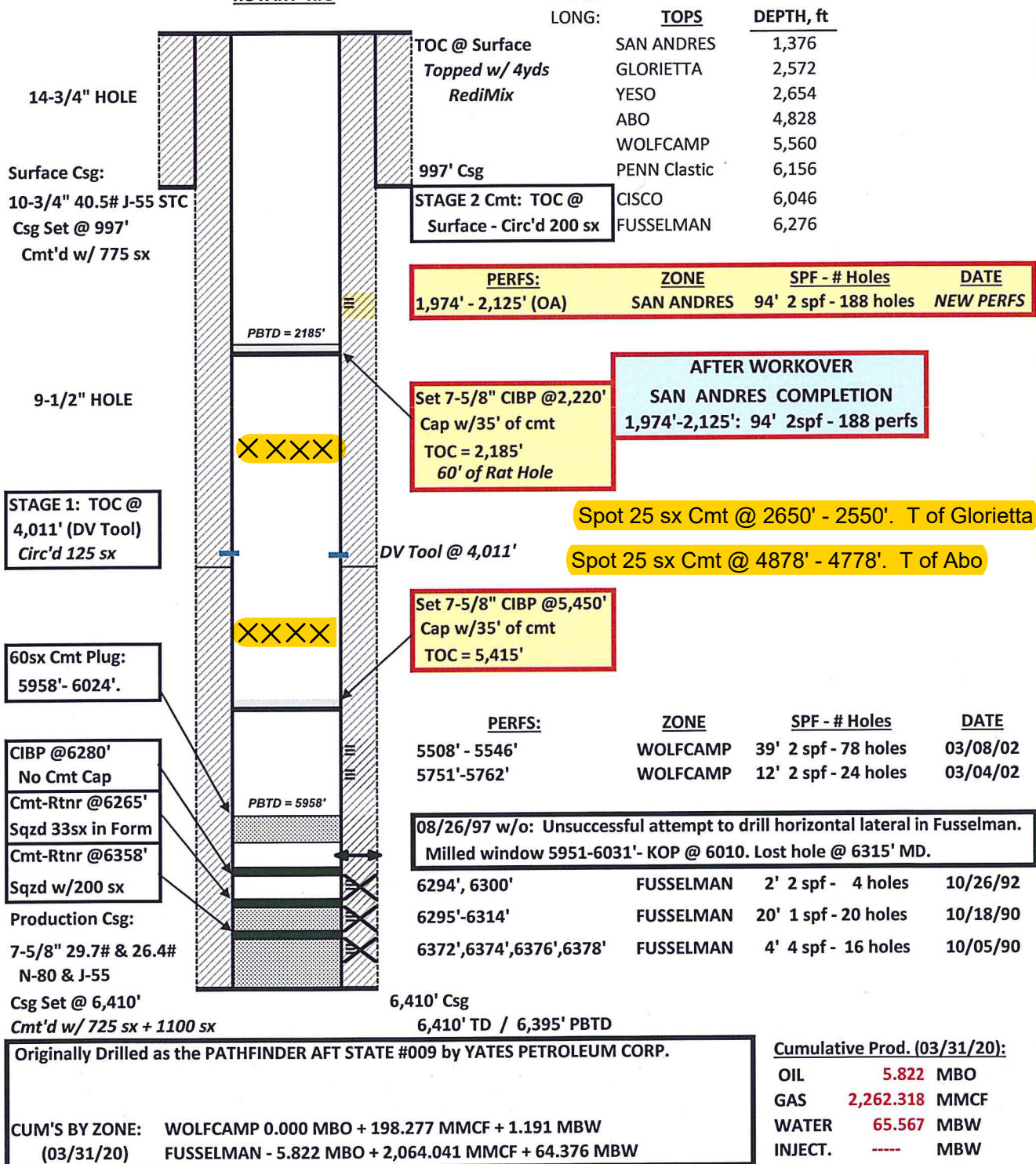
RETURNED WELL TO PRODUCTION: 07/31/2002.

SOLIS PARTNERS, LLC

WELLBORE DIAGRAM

Lease/Well No.: **PATHFINDER AFT STATE #009** ELEVATION, GL: **3,822.0** ft
 Location: 650' FSL & 2,200' FWL
 UL: N, SEC: 21, T: 10-S, R: 27-E FIELD: **DIABLO - WOLFCAMP (GAS)**
 CHAVES County, NM
 LEASE No.: State LG-5246 Spudded: **9/5/1990**
 API No.: **30-005-62795** Drlg Stopped: **9/26/1990**
 Completed: **10/22/1990**

ROTARY RIG



HPS: 12/15/2020

PATHFINDER AFT STATE #009
WELL PERFORATION, ACID JOB, FRAC JOB, & WELL TEST DETAILS

PERFS			ACID JOB(S)				FRAC JOB(S)				INITIAL POTENTIAL TEST						
TOP	BOTTOM	ZONE	DATE	ACID GALS	ACID TYPE	DATE	FRAC FLUID GALS	FLUID TYPE	SAND LBS	SAND SIZE	REMARKS	TEST DATE	OIL BOPD	GAS MCFD	WATER BWPD		
6,372	6,378	(4') FUSSELMAN	10/5/1990	500	15% NEFE HCl		<u>4' @ 4 spf = 16 perfs // 125.0 gal/ft // 31.25 gal/perf</u>				FLOWING 17/64" chk FTP = 1,700 psi	10/22/1990	6	2,800	4		
6,295	6,314	(20') FUSSELMAN	10/18/1990	1,500	15% NEFE HCl		<u>20' @ 1 spf = 20 perfs // 75.0 gal/ft // 75.0 gal/perf</u>										
6,294	6,300	(1') FUSSELMAN	10/26/1992	500	15% NEFE HCl		<u>2' @ 2 spf = 4 perfs // 250.0 gal/ft // 125.0 gal/perf</u>										
		[Sand Jet Perforations 2 Jet-Cut Holes/ft	11/5/1992	500	15% NEFE HCl		<u>2' @ 2 spf = 4 perfs // 250.0 gal/ft // 125.0 gal/perf</u>										
6,294	6,300	(1') FUSSELMAN	8/25/1993	3,000	15% NEFE HCl		<u>2' @ 2 spf = 4 perfs // 1,500.0 gal/ft // 750.0 gal/perf</u>										
		[Sand Jet Perforations 2 Jet-Cut Holes/ft															
5,751	5,762	(12') WOLFCAMP	3/6/2002	1,100	7.5% NEFE HCl		<u>12' @ 2 spf = 24 perfs // 91.7 gal/ft // 45.8 gal/perf</u>										
5,508	5,546	(39') WOLFCAMP	3/12/2002	1,900	7.5% NEFE HCl		<u>39' @ 2 spf = 78 perfs // 48.7 gal/ft // 24.36 gal/perf</u>				FLOWING 12/64" chk FTP = 270 psi	4/16/2012	0	210	0		
						5/13/2002	75,000	40# Viking Gel	115,400	20/40							
5,508	5,546	(39') WOLFCAMP	7/31/2002	COMMINGLED BOTH WOLFCAMP ZONES													
5,751	5,762	(12') WOLFCAMP															

District I
1625 N. French Dr., Hobbs, NM 88240
Phone:(575) 393-6161 Fax:(575) 393-0720
District II
811 S. First St., Artesia, NM 88210
Phone:(575) 748-1283 Fax:(575) 748-9720
District III
1000 Rio Brazos Rd., Aztec, NM 87410
Phone:(505) 334-6178 Fax:(505) 334-6170
District IV
1220 S. St Francis Dr., Santa Fe, NM 87505
Phone:(505) 476-3470 Fax:(505) 476-3462

State of New Mexico
Energy, Minerals and Natural Resources
Oil Conservation Division
1220 S. St Francis Dr.
Santa Fe, NM 87505

COMMENTS

Action 26987

COMMENTS

Operator: SOLIS PARTNERS, L.L.C. P.O. Box 5790 Midland, TX79704			OGRID: 330238	Action Number: 26987	Action Type: APD
Created By	Comment			Comment Date	
kpickford	KP GEO Review 5/10/2021			05/10/2021	

District I
1625 N. French Dr., Hobbs, NM 88240
Phone:(575) 393-6161 Fax:(575) 393-0720
District II
811 S. First St., Artesia, NM 88210
Phone:(575) 748-1283 Fax:(575) 748-9720
District III
1000 Rio Brazos Rd., Aztec, NM 87410
Phone:(505) 334-6178 Fax:(505) 334-6170
District IV
1220 S. St Francis Dr., Santa Fe, NM 87505
Phone:(505) 476-3470 Fax:(505) 476-3462

State of New Mexico
Energy, Minerals and Natural Resources
Oil Conservation Division
1220 S. St Francis Dr.
Santa Fe, NM 87505

CONDITIONS

Action 26987

CONDITIONS OF APPROVAL

Operator: SOLIS PARTNERS, L.L.C. P.O. Box 5790 Midland, TX79704			OGRID: 330238	Action Number: 26987	Action Type: APD
OCD Reviewer	Condition				
gcordero	See Attached COA's & changes to Plugging Procedure				