

District I (575) 393-6161
1625 N. French Dr., Hobbs, NM 88240
District II (575) 748-1283
811 S. First St., Artesia, NM 88210
District III (505) 334-6178
1000 Rio Brazos Road, Aztec, NM 87410
District IV (505) 827-8198
1220 S. St. Francis Dr., Santa Fe, NM 87505

State of New Mexico
Energy Minerals and Natural Resources

Form C-106
Revised August 1, 2011

Oil Conservation Division
1220 South St. Francis Dr.
Santa Fe, NM 87505

ACT Permit No.

NOTICE OF INTENTION TO UTILIZE AUTOMATIC CUSTODY TRANSFER EQUIPMENT

Operator LOGOS Operating, LLC

Address 2010 Afton Place, Farmington, NM 87401 County San Juan

Lease(s) to be served by this ACT Unit Federal Lease NMNM18463 and Federal CA NMNM141953

Pool(s) to be served by this ACT Unit Basin Mancos (97232)

Location of ACT System: Unit H Section 3 Township 23N Range 08W

Order No. authorizing commingling between leases if more than one lease is to be served by this system.

CTB-935 Date 3/21/2020

Order No. authorizing commingling between pools if more than one pool is to be served by this system

N/A Date

Authorized transporter of oil from this system Whiptail Midstream, LLC

Transporter's address 15 West 6th Street, Tulsa, OK 74119

Maximum expected daily through-put for this system: 2000 BBL/Day

If system fails to transfer oil due to malfunction or otherwise, waste by overflow will be averted by:

CHECK ONE: A. ☐ Automatic shut-down facilities B. ☒ Providing adequate available capacity to receive production during maximum unattended time of lease operation
as required by 19.15.18.15.C(8) NMAC 19.15.18.15.C(9) NMAC

If "A" above is checked, will flowing wells be shut-in at the header manifold or at the wellhead?

Maximum well-head shut-in pressure

If "B" above is checked, how much storage capacity is available above the normal high working level of the

surge tank 2400 BBLS.

What is the normal maximum unattended time of lease operation? Sixteen (16) Hours.

What device will be used for measuring oil in this ACT unit?

CHECK ONE: ☐ Positive displacement meter ☐ Weir-type measuring vessel
☐ Positive volume metering chamber ☒ Other; describe Coriolis Meter

Remarks: This LACT will be selling to pipeline.

OPERATOR:

I hereby certify above information is true and complete to best of my knowledge and subject ACT system will be installed and operated in accordance with Rule 19.15.18.15 NMAC. Approval of this Form
C-106 does not eliminate necessity of an approved C-104 prior to running any oil or gas from this system.

Signature Tamra Sessions

Printed Name & Title Tamra Sessions

Email Address tsessions@logosresourcesllc.com

Date 4/20/2021 Telephone 505-324-4145

OIL CONSERVATION DIVISION

Approved by: Dean R. McClure

Title: Petroleum Engineer

Date: 05/21/2021

C106-900

INSTRUCTIONS: Submit one copy of Form C-106 with following attachments to appropriate district office.

- 1) Lease plat showing all wells which will be produced in ACT system.
- 2) Schematic diagram of battery and ACT equipment showing all major components and means employed to prove accuracy of measuring device.
- 3) Letter from transporter agreeing to utilization of ACT system as shown on schematic diagram.

**NOTICE OF INTENTION TO UTILIZE CUSTODY TRANSFER EQUIPMENT
OMEGA 2308 03 PIPELINE LACT UNIT**

WELLS TO BE SERVED BY PIPELINE LACT UNIT:

Chaco 23 08 03 1H / API #30-045-35647 / UNIT H (SE/NE) Sec. 3, T23N, R8W, NMPM
Chaco 23 08 03 2H / API #30-045-35646 / UNIT H (SE/NE) Sec. 3, T23N, R8W, NMPM
Chaco 23 08 03 3H / API #30-045-38171 / UNIT H (SE/NE) Sec. 3, T23N, R8W, NMPM
Zeus 2308 03 4H / API #30-045-38179 / UNIT H (SE/NE) Sec. 3, T23N, R8W, NMPM
Omega 2308 03 5H / API #30-045-38180 / UNIT H (SE/NE) Sec. 3, T23N, R8W, NMPM

19.15.18.15 AUTOMATIC CUSTODY TRANSFER EQUIPMENT:

A. Oil shall be received and measured in facilities of an approved design. The facilities shall permit the testing of each well at reasonable intervals and may be comprised of manually gauged, closed stock tanks for which the operator of the ACT system has prepared proper strapping tables, or of ACT equipment. The division shall permit ACT equipment's use only after the operator complies with the following. The operator shall file with the division form C-106 and receive approval for use of the ACT equipment prior to transferring oil through the ACT system. The carrier shall not accept delivery of oil through the ACT system until the division has approved form C-106.

- *See flow process diagram attached.*

B. The operator of the ACT system shall submit form C-106 to the appropriate division district office, which is accompanied by the following:

- (1) plat of the lease showing all wells that the any well operator will produce into the ACT system;
 - *Attached as part of Form C-106 Notice of Intent.*
- (2) schematic diagram of the ACT equipment, showing on the diagram all major components such as surge tanks and their capacity, extra storage tanks and their capacity, transfer pumps, monitors, reroute valves, treaters, samplers, strainers, air and gas eliminators, back pressure valves and metering devices (indicating type and capacity, *i.e.* whether automatic measuring tank, positive volume metering chamber, weir-type measuring vessel or positive displacement meter); the schematic diagram shall also show means employed to prove the measuring device's accuracy; and
 - *Attached as part of Form C-106 Notice of Intent.*
- (3) letter from transporter agreeing to utilization of ACT system as shown on schematic diagram.
 - *Attached as part of Form C-106 Notice of Intent.*

C. The division shall not approve form C-106 unless the operator of the ACT system will install and operate the ACT system in compliance with the following requirements.

- (1) Provision is made for accurate determination and recording of uncorrected volume and applicable temperature, or of temperature corrected volume. The system's overall accuracy shall equal or surpass manual methods.
 - *The LACT system is more accurate when compared to manual tank. It is proved per BLM Onshore Order #4 Measurement of Oil and API MPMS Chapter 4 Proving Systems; with a volumetric prover that meets the requirements set forth in Onshore Order #4. The LACT also has a temperature RTD which will be calibrated semi-annually, unless more frequent verification is requested by the division.*
- (2) Provision is made for representative sampling of the oil transferred for determination of API gravity and BS&W content.
 - *The LACT is equipped with a flow proportional sampler (sample probe and actuated valve). The sampled fluid is stored in a sealed cylinder that is used for API gravity and S&W determination.*
- (3) Provision is made if required by either the oil's producer or the transporter to give adequate assurance that the ACT system runs only merchantable oil.
 - *The LACT is equipped with a water cut analyzer that communicated with the flow computer. When the S&W set point is reached the divert valve will engage sending non-merchantable oil to a divert tank. The set point can be adjusted in the flow computer but only if agreed upon by both shipper and producer.*
- (4) Provision is made for set-stop counters to stop the flow of oil through the ACT system at or prior to the time the allowable has been run. Counters shall provide non-reset totalizers that are visible for inspection at all times.
 - *The Coriolis meter has a non-resettable totalizer which is always visibly available on the LCD display.*

- (5) Necessary controls and equipment are enclosed and sealed, or otherwise arranged to provide assurance against, or evidence of, accidental or purposeful mismeasurement resulting from tampering.
- ***Required ports are sealed and tracked in the seal log.***
- (6) The ACT system's components are properly sized to ensure operation within the range of their established ratings. All system components that require periodic calibration or inspection for proof of continued accuracy are readily accessible; the frequency and methods of the calibration or inspection shall be as set forth in Paragraph (12) of Subsection C of 19.15.18.15 NMAC.
- ***The Coriolis is proved per BLM Onshore Order #4 Measurement of Oil and API MPMS Chapter 4 Proving Systems; with a volumetric prover that meets the requirements set forth in Onshore Order #4. The prover is NIST traceable and water drawn on a bi-annual basis. Proving will be consistent with Onshore Order #4, unless a variance is granted by the Division. NMOCD representatives are sent the schedule to witness if desired. The temperature transmitter is verified on a semi-annual basis, unless more frequent verification is requested by the Division. The water cut analyzer is calibrated as needed.***
- (7) The control and recording system includes adequate fail-safe features that provide assurance against mismeasurement in the event of power failure, or the failure of the ACT system's component parts.
- ***In the event of power failure, the divert valve mechanically goes to "failed state" and no longer sales oil but only sends it to the divert tank.***
 - ***All of the historized volume data is stored in the flow computer memory with battery backup and is also transmitted by SCADA, multiple times a day, to an office server. So even during a power failure no oil volume is lost.***
 - ***In the event of a malfunction, the LACT unit is programmed to shut off and the divert valve is forced to close and no longer sales oil but only sends it to the divert tank. The malfunction is also logged by the flow computer.***
- (8) The ACT system and allied facilities include fail-safe equipment as may be necessary, including high level switches in the surge tank or overflow storage tank that, in the event of power failure or malfunction of the ACT or other equipment, will shut down artificially lifted wells connected to the ACT system and will shut in flowing wells at the well-head or at the header manifold, in which latter case the operator of the ACT system shall pressure test all flowlines to at least 1½ times the maximum well-head shut-in pressure prior to the ACT system's initial use and every two years thereafter.
- ***Hi level switches are in place and will shut the well in at the inlet to the production unit in the event of a full tank. Flow lines were tested to 1 ½ times shut in pressure at initial construction. Testing will commence every two years to ensure piping integrity.***
- (9) As an alternative to the requirements of Paragraph (8) of Subsection C of 19.15.18.15 NMAC the producer shall provide and at all times maintain a minimum of available storage capacity above the normal high working level of the surge tank to receive and hold the amount of oil that may be produced during maximum unattended time of lease operation.
- ***N/A***
- (10) In all ACT systems employing automatic measuring tanks, weir-type measuring vessels, positive volume metering chambers or any other volume measuring container, the container and allied components shall be properly calibrated prior to initial use and shall be operated, maintained and inspected as necessary to ensure against incrustation, changes in clingage factors, valve leakage or other leakage and improper action of floats, level detectors, etc.
- ***N/A (Coriolis Meter)***
- (11) In ACT systems employing positive displacement meters, the meter and allied components shall be properly calibrated prior to initial use and shall be operated, maintained and inspected as necessary to ensure against oil mismeasurement.
- ***The Coriolis is proved per BLM Onshore Order #4 Measurement of Oil and API MPMS Chapter 4 Proving Systems; with a volumetric prover that meets the requirements set forth in Onshore Order #4. The prover is NIST traceable and water drawn on a bi-annual basis. Monthly proving will continue per the rule, unless a variance is granted by the Division. NMOCD representatives are sent the schedule to witness if desired. The temperature transmitter is verified on a semi-annual basis, unless more frequent verification is requested by the Division.***

(12) The operator of the ACT system shall check the measuring and recording devices of ACT systems for accuracy at least once each month unless it has obtained an exception to such determination from the division. Where applicable, the operator of the ACT system shall use API standard 1101, Measurement of Petroleum Hydrocarbons by Positive Displacement Meter. Meters may be proved against master meters, portable prover tanks or prover tanks permanently installed on the lease. If the operator of the ACT system uses permanently installed prover tanks, the distance between the opening and closing levels and the provision for determining the opening and closing readings shall be sufficient to detect variations of 5/100 of one percent. The operator of the ACT system shall file reports of determination on the division form entitled "meter test report" or on another acceptable form in duplicate with the appropriate division district office.

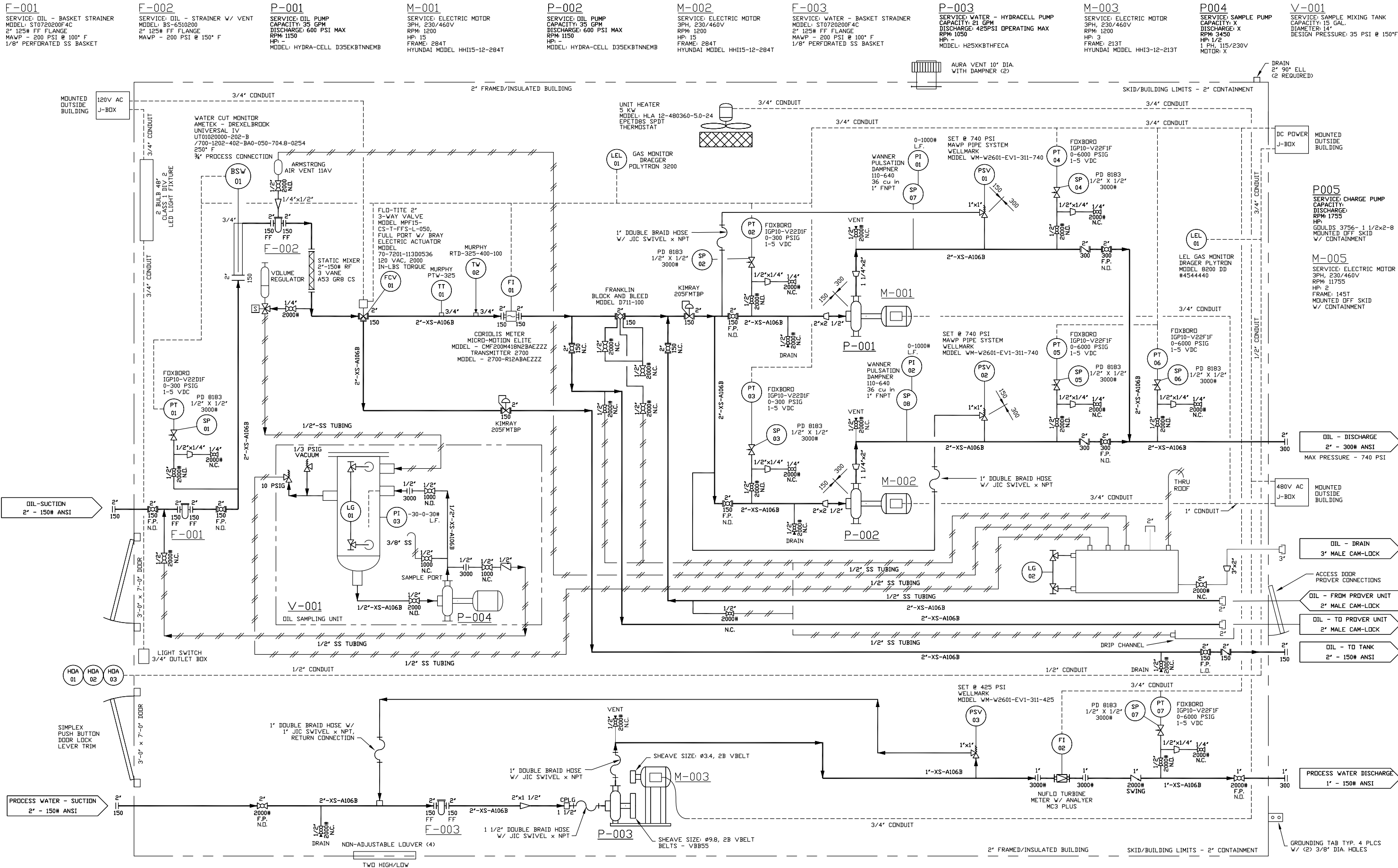
- ***The Coriolis is proved per BLM Onshore Order #4 Measurement of Oil and API MPMS Chapter 4 Proving Systems; with a volumetric prover that meets the requirements set forth in Onshore Order #4. The prover is NIST traceable and water drawn on a bi-annual basis. Monthly proving will continue per the rule, unless a variance is granted by the Division. NMOCD representatives are sent the schedule to witness if desired. The temperature transmitter is verified on a semi-annual basis, unless more frequent verification is requested by the Division.***

(13) To obtain an exception to the requirement in Paragraph (12) of Subsection C of 19.15.18.15 NMAC that all measuring and recording devices be checked for accuracy once each month, either the producer or transporter may file a request with the director setting forth facts pertinent to the exception. The application shall include a history of the average factors previously obtained, both tabulated and plotted on a graph of factors versus time, showing that the particular installation has experienced no erratic drift. The applicant shall also furnish evidence that the other interested party has agreed to the exception. The director may then set the frequency for determination of the system's accuracy at the interval which the director deems prudent.

- ***N/A***

D. The division may revoke its approval of an ACT system's form C-106 if the system's operator fails to operate it in compliance with 19.15.18.15 NMAC.

[19.15.18.15 NMAC - Rp, 19.15.5.309 NMAC, 12/1/08]



THIS DOCUMENT, WHETHER CONTAINING PATENTABLE OR NONPATENTABLE SUBJECT MATTER EMBODIES THE PROPRIETARY AND CONFIDENTIAL INFORMATION OF HENRY PRODUCTION INC. AND PUMPS AND SERVICE. IT IS LOANED IN CONFIDENCE WITH THE UNDERSTANDING THAT IT WILL NOT BE REPRODUCED, USED OR DISCLOSED FOR ANY PURPOSE EXCEPT THE LIMITED PURPOSE FOR WHICH IT IS LOANED. THIS DOCUMENT SHALL BE RETURNED TO HENRY PRODUCTION INC. OR PUMPS AND SERVICE UPON DEMAND.

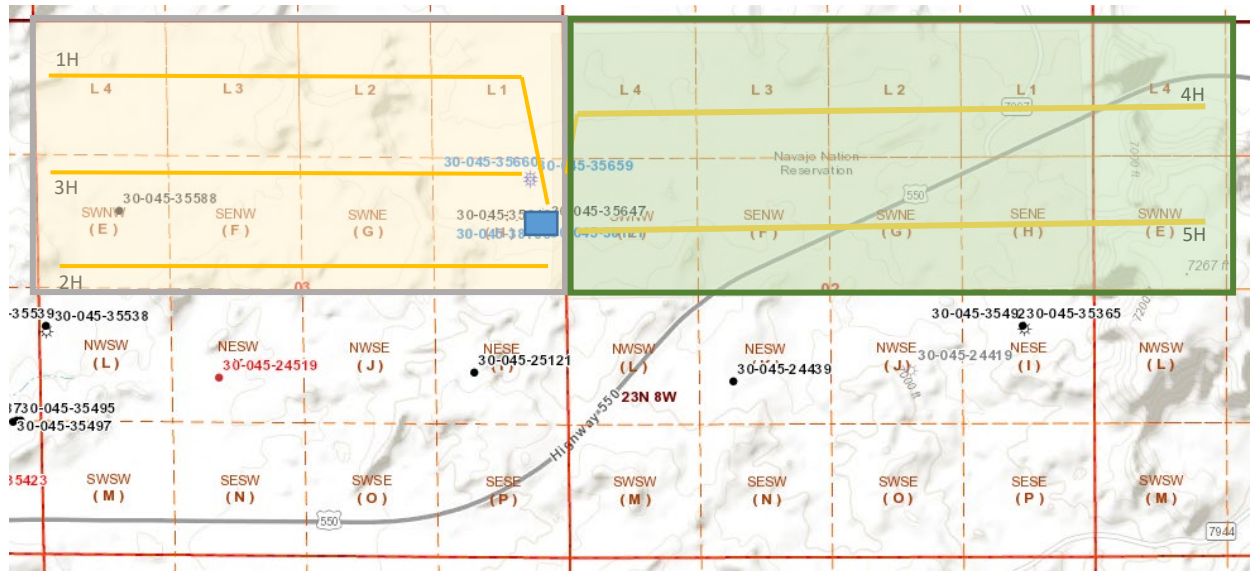
8	OIL DRAIN SYSTEM ADDED	JKR	JKR	Drawn By:	JKR
7	OIL PSV OUTLET CHANGE	JKR	JKR	Date:	June 2015
6	SAMPLE POT UPDATE	JKR	JKR	Checked By:	JKR
5	UPDATE PART NUMBERS	JKR	JKR	Date:	Aug 1014
4	UPDATE	DT	JKR	Approved:	
3	REVISED CONDUIT SIZES	JKR	JKR	Date:	
2	CHGD LOW PRESS. TRANSMITTER	JKR	JKR		
REV.	DESCRIPTION	BY	CHKD.		







3440 Morning Star Drive, Farmington, NM 87401 (505) 327-0422

Drawing Name:		P & ID	
Project:		ENDURING TRIPLE PUMP TRANSFER - LACT	
Scale:	NTS	Drawing No.:	2222-01
		Rev.	8

LOGOS OPERATING, LLC - SITE DIAGRAM										LOGOS OPERATING, LLC - SITE DIAGRAM															
Owner: Tyler Smith					X					DATE: 04/19/21					DATE: 04/19/21										
WELL / SITE NAME:		Chaco 23 08 03 #001H			LEGAL DESCR (U-S-T-R):			UL H, SEC 03, T23N, R08W				WELL / SITE NAME:		Chaco 23 08 03 #002H			LEGAL DESCR (U-S-T-R):			UL H, SEC 03, T23N, R08W					
API No.:		30-045-35647			PRODUCING ZONE(S):			Mancos				API No.:		30-045-35646			PRODUCING ZONE(S):			Mancos					
LEASE No.:		NMNM-18463			LATITUDE:		36.258023		LONGITUDE:		107.660784		LEASE No.:		NMNM-18463			LATITUDE:		36.2579		LONGITUDE:		107.660785	
FOOTAGES:		2013' FNL & 186' FEL			COUNTY:		San Juan		STATE:		NM		FOOTAGES:		2057' FNL & 187' FEL			COUNTY:		San Juan		STATE:		NM	
<div><div><div></div><div></div></div><div><div></div><div></div></div></div> <div><div></div><div></div></div> <div><div></div><div></div></div> <div><div></div><div></div></div> <div><div></div><div></div></div> <div><div></div><div></div></div> <div><div></div><div></div></div> <div><div></div><div></div></div> <div><div></div><div></div></div> <div><div></div><div></div></div> <div><div></div><div></div></div> <div><div></div><div></div></div> <div><div></div><div></div></div> <div><div></div><div></div></div> <div><div></div><div></div></div> <div><div></div><div></div></div> <div><div></div><div></div></div> <div><div></div><div></div></div> <div><div></div><div></div></div> <div><div></div><div></div></div> <div><div></div><div></div></div> <div><div></div><div></div></div> <div><div></div><div></div></div> <div><div></div><div></div></div> <div><div></div><div></div></div> <div><div></div><div></div></div> <div><div></div><div></div></div> <div><div></div><div></div></div> <div><div></div><div></div></div> <div><div></div><div></div></div> <div><div></div><div></div></div> <div><div></div><div></div></div> <div><div></div><div></div></div> <div><div></div><div></div></div> <div><div></div><div></div></div> <div><div></div><div></div></div> <div><div></div><div></div></div> <div><div></div><div></div></div> <div><div></div><div></div></div> <div><div></div><div></div></div> <div><div></div><div></div></div> <div><div></div><div></div></div> <div><div></div><div></div></div> <div><div></div><div></div></div> <div><div></div><div></div></div> <div><div></div><div></div></div> <div><div></div><div></div></div> <div><div></div><div></div></div> <div><div></div><div></div></div> <div><div></div><div></div></div> <div><div></div><div></div></div> <div><div></div><div></div></div> <div><div></div><div></div></div> <div><div></div><div></div></div> <div><div></div><div></div></div> <div><div></div><div></div></div> <div><div></div><div></div></div> <div><div></div><div></div></div> <div><div></div><div></div></div> <div><div></div><div></div></div> <div><div></div><div></div></div> <div><div></div><div></div></div> <div><div></div><div></div></div> <div><div></div><div></div></div> <div><div></div><div></div></div> <div><div></div><div></div></div> <div><div></div><div></div></div> <div><div></div><div></div></div> <div><div></div><div></div></div> <div><div></div><div></div></div> <div><div></div><div></div></div> <div><div></div><div></div></div> <div><div></div><div></div></div> <div><div></div><div></div></div> <div><div></div><div></div></div> <div><div></div><div></div></div> <div><div></div><div></div></div> <div><div></div><div></div></div> <div><div></div><div></div></div> <div><div></div><div></div></div> <div><div></div><div></div></div> <div><div></div><div></div></div> <div><div></div><div></div></div> <div><div></div><div></div></div> <div><div></div><div></div></div> <div><div></div><div></div></div> <div><div></div><div></div></div> <div><div></div><div></div></div> <div><div></div><div></div></div> <div><div></div><div></div></div> <div><div></div><div></div></div> <div><div></div><div></div></div> <div><div></div><div></div></div> <div><div></div><div></div></div> <div><div></div><div></div></div> <div><div></div><div></div></div> <div><div></div><div></div></div> <div><div></div><div></div></div> <div><div></div><div></div></div> <div><div></div><div></div></div> <div><div></div><div></div></div> <div><div></div><div></div></div> <div><div></div><div></div></div> <div><div></div><div></div></div> <div><div></div><div></div></div> <div><div></div><div></div></div> <div><div></div><div></div></div> <div><div></div><div></div></div> <div><div></div><div></div></div> <div><div></div><div></div></div> <div><div></div><div></div></div> <div><div></div><div></div></div> <div><div></div><div></div></div> <div><div></div><div></div></div> <div><div></div><div></div></div> <div><div></div><div></div></div> <div><div></div><div></div></div> <div><div></div><div></div></div> <div><div></div><div></div></div> <div><div></div><div></div></div> <div><div></div><div></div></div> <div><div></div><div></div></div> <div><div></div><div></div></div> <div><div></div><div></div></div> <div><div></div><div></div></div> <div><div></div><div></div></div> <div><div></div><div></div></div> <div><div></div><div></div></div> <div><div></div><div></div></div> <div><div></div><div></div></div> <div><div></div><div></div></div> <div><div></div><div></div></div> <div><div></div><div></div></div> <div><div></div><div></div></div> <div><div></div><div></div></div> <div><div></div><div></div></div> <div><div></div><div></div></div> <div><div></div><div></div></div> <div><div></div><div></div></div> <div><div></div><div></div></div> <div><div></div><div></div></div> <div><div></div><div></div></div> <div><div></div><div></div></div> <div><div></div><div></div></div> <div><div></div><div></div></div> <div><div></div><div></div></div> <div><div></div><div></div></div> <div><div></div><div></div></div> <div><div></div><div></div></div> <div><div></div><div></div></div> <div><div></div><div></div></div> <div><div></div><div></div></div> <div><div></div><div></div></div> <div><div></div><div></div></div> <div><div></div><div></div></div> <div><div></div><div></div></div> <div><div></div><div></div></div> <div><div></div><div></div></div> <div><div></div><div></div></div> <div><div></div><div></div></div> <div><div></div><div></div></div> <div><div></div><div></div></div> <div><div></div><div></div></div> <div><div></div><div></div></div> <div><div></div><div></div></div> <div><div></div><div></div></div> <div><div></div><div></div></div> <div><div></div><div></div></div> <div><div></div><div></div></div> <div><div></div><div></div></div> <div><div></div><div></div></div> <div><div></div><div></div></div> <div><div></div><div></div></div> <div><div></div><div></div></div> <div><div></div><div></div></div> <div><div></div><div></div></div> <div><div></div><div></div></div> <div><div></div><div></div></div> <div><div></div><div></div></div> <div><div></div><div></div></div> <div><div></div><div></div></div> <div><div></div><div></div></div> <div><div></div><div></div></div> <div><div></div><div></div></div> <div><div></div><div></div></div> <div><div></div><div></div></div> <div><div></div><div></div></div> <div><div></div><div></div></div> <div><div></div><div></div></div> <div><div></div><div></div></div> <div><div></div><div></div></div> <div><div></div><div></div></div> <div><div></div><div></div></div> <div><div></div><div></div></div> <div><div></div><div></div></div> <div><div></div><div></div></div> <div><div></div><div></div></div> <div><div></div><div></div></div> <div><div></div><div></div></div> <div><div></div><div></div></div> <div><div></div><div></div></div> <div><div></div><div></div></div> <div><div></div><div></div></div> <div><div></div><div></div></div> <div><div></div><div></div></div> <div><div></div><div></div></div> <div><div></div><div></div></div> <div><div></div><div></div></div> <div><div></div><div></div></div> <div><div></div><div></div></div> <div><div></div><div></div></div> <div><div></div><div></div></div> <div><div></div><div></div></div> <div><div></div><div></div></div> <div><div></div><div></div></div> <div><div></div><div></div></div> <div><div></div><div></div></div> <div><div></div><div></div></div> <div><div></div><div></div></div> <div><div></div><div></div></div> <div><div></div><div></div></div> <div><div></div><div></div></div> <div><div></div><div></div></div> <div><div></div><div></div></div> <div><div></div><div></div></div> <div><div></div><div></div></div> <div><div></div><div></div></div> <div><div></div><div></div></div> <div><div></div><div></div></div> <div><div></div><div></div></div> <div><div></div><div></div></div> <div><div></div><div></div></div> <div><div></div><div></div></div> <div><div></div><div></div></div> <div><div></div><div></div></div> <div><div></div><div></div></div> <div><div></div><div></div></div> <div><div></div><div></div></div> <div><div></div><div></div></div> <div><div></div><div></div></div> <div><div></div><div></div></div> <div><div></div><div></div></div> <div><div></div><div></div></div> <div><div></div><div></div></div> <div><div></div><div></div></div> <div><div></div><div></div></div> <div><div></div><div></div></div> <div><div></div><div></div></div> <div><div></div><div></div></div> <div><div></div><div></div></div> <div><div></div><div></div></div> <div><div></div><div></div></div> <div><div></div><div></div></div> <div><div></div><div></div></div> <div><div></div><div></div></div> <div><div></div><div></div></div> <div><div></div><div></div></div> <div><div></div><div></div></div> <div><div></div><div></div></div> <div><div></div><div></div></div> <div><div></div><div></div></div> <div><div></div><div></div></div> <div><div></div><div></div></div> <div><div></div><div></div></div> <div><div></div><div></div></div> <div><div></div><div></div></div> <div><div></div><div></div></div> <div><div></div><div></div></div> <div><div></div><div></div></div> <div><div></div><div></div></div> <div><div></div><div></div></div> <div><div></div><div></div></div> <div><div></div><div></div></div> <div><div></div><div></div></div> <div><div></div><div></div></div> <div><div></div><div></div></div> <div><div></div><div></div></div> <div><div></div><div></div></div> <div><div></div><div></div></div> <div><div></div><div></div></div> <div><div></div><div></div></div> <div><div></div><div></div></div> <div><div></div><div></div></div> <div><div></div><div></div></div> <div><div></div><div></div></div> <div><div></div><div></div></div> <div><div></div><div></div></div> <div><div></div><div></div></div> <div><div></div><div></div></div> <div><div></div><div></div></div> <div><div></div><div></div></div> <div><div></div><div></div></div> <div><div></div><div></div></div> <div><div></div><div></div></div> <div><div></div><div></div></div> <div><div></div><div></div></div> <div><div></div><div></div></div> <div><div></div><div></div></div> <div><div></div><div></div></div> <div><div></div><div></div></div> <div><div></div><div></div></div> <div><div></div><div></div></div> <div><div></div><div></div></div> <div><div></div><div></div></div> <div><div></div><div></div></div> <div><div></div><div></div></div> <div><div></div><div></div></div> <div><div></div><div></div></div> <div><div></div><div></div></div> <div><div></div><div></div></div> <div><div></div><div></div></div> <div><div></div><div></div></div> <div><div></div><div></div></div> <div><div></div><div></div></div> <div><div></div><div></div></div> <div><div></div><div></div></div> <div><div></div><div></div></div> <div><div></div><div></div></div> <div><div></div><div></div></div> <div><div></div><div></div></div> <div><div></div><div></div></div> <div><div></div><div></div></div> <div><div></div><div></div></div> <div><div></div><div></div></div> <div><div></div><div></div></div> <div><div></div><div></div></div> <div><div></div><div></div></div> <div><div></div><div></div></div> <div><div></div><div></div></div> <div><div></div><div></div></div> <div><div></div><div></div></div> <div><div></div><div></div></div> <div><div></div><div></div></div> <div><div></div><</div>																									



LOGOS OPERATING, LLC
 OMEGA 2308 03 PAD
 Lease Plat Map
 San Juan County, NM

	Well Pad
	Laterals
	Lease NMNM18463
	CA NMNM141953

CONFIDENTIAL**TIGHT HOLE****DISTRICT I**1625 N. French Dr., Hobbs, N.M. 88240
Phone: (575) 393-6161 Fax: (575) 393-0720**DISTRICT II**811 S. First St., Artesia, N.M. 88210
Phone: (575) 748-1283 Fax: (575) 748-9720**DISTRICT III**1000 Rio Brancos Rd., Aztec, N.M. 87410
Phone: (505) 334-6178 Fax: (505) 334-6170**DISTRICT IV**1220 S. St. Francis Dr., Santa Fe, NM 87505
Phone: (505) 476-3460 Fax: (505) 476-3462State of New Mexico
Energy, Minerals & Natural Resources DepartmentForm C-102
Revised August 1, 2011Submit one copy to appropriate
District Office**OIL CONSERVATION DIVISION**1220 South St. Francis Dr.
Santa Fe, NM 87505☐ AMENDED REPORT☒ AS-DRILLED**WELL LOCATION AND ACREAGE DEDICATION PLAT**

¹ API Number 30-045-35647	² Pool Code 97232	³ Pool Name BASIN MANCOS GAS
⁴ Property Code 315301	⁵ Property Name CHACO 23-08-3	⁶ Well Number 1H
⁷ GRID No. 162928	⁸ Operator Name ENERGEN RESOURCES CORPORATION	⁹ Elevation 6912.3'

¹⁰ Surface Location

UL or lot no.	Section	Township	Range	Lot Idn	Feet from the	North/South line	Feet from the	East/West line	County
H	3	23N	8W		2013'	NORTH	186'	EAST	SAN JUAN

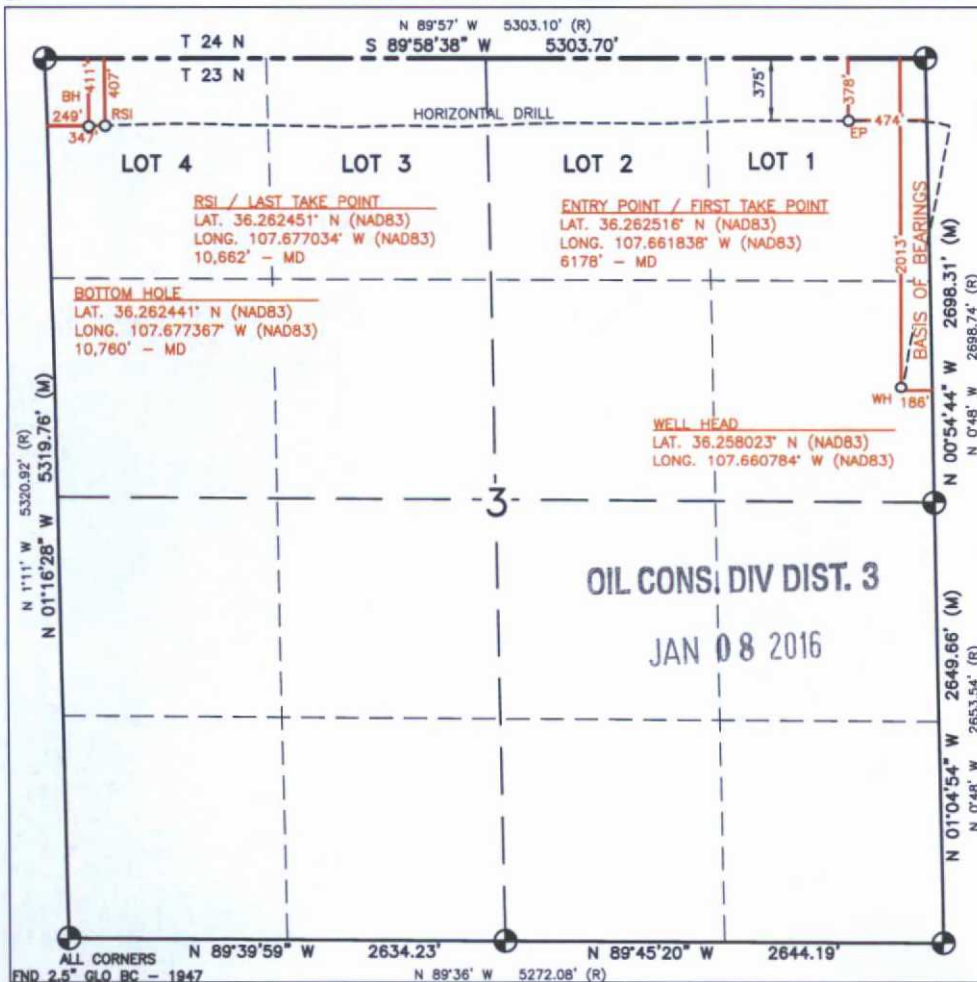
¹¹ Bottom Hole Location If Different From Surface

UL or lot no.	Section	Township	Range	Lot Idn	Feet from the	North/South line	Feet from the	East/West line	County
D	3	23N	8W	4	411'	NORTH	249'	WEST	SAN JUAN

¹² Dedicated Acres 323.20 ACRES - S/2 N/2 & LOTS 1 THRU 4 OF SECTION 3	¹³ Joint or Infill	¹⁴ Consolidation Code	¹⁵ Order No. NSL 7245-A
---	-------------------------------	----------------------------------	---------------------------------------

NO ALLOWABLE WILL BE ASSIGNED TO THIS COMPLETION UNTIL ALL INTERESTS HAVE BEEN CONSOLIDATED
OR A NON-STANDARD UNIT HAS BEEN APPROVED BY THE DIVISION

16

**17 OPERATOR CERTIFICATION**

I hereby certify that the information contained herein is true and complete to the best of my knowledge and belief, and that this organization either owns a working interest or unleased mineral interest in the land including the proposed bottom hole location or has a right to drill this well at this location pursuant to a contract with an owner of such a mineral or working interest, or to a voluntary pooling agreement or a compulsory pooling order heretofore entered by the division.

Theresa McAndrews 01/07/16
Signature Date

Theresa McAndrews
Printed Name

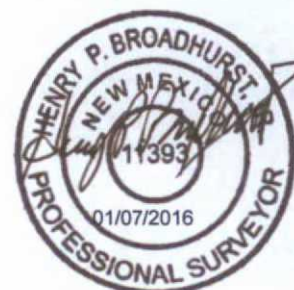
tmcandre@energen.com
E-mail Address

SURVEYOR CERTIFICATION

I hereby certify that the well location shown on this plat was plotted from field notes of actual surveys made by me or under my supervision, and that the same is true and correct to the best of my belief.

DECEMBER 16, 2015

Date of Survey
Signature and Seal of Professional Surveyor:



Certificate Number 11393

OIL CONS. DIV DIST. 3

CONFIDENTIAL

TIGHT HOLE

DISTRICT I
1625 N. French Dr., Hobbs, N.M. 88240
Phone: (575) 393-6161 Fax: (575) 393-0720

DISTRICT II
811 S. First St., Artesia, N.M. 88210
Phone: (575) 748-1283 Fax: (575) 748-9720

DISTRICT III
1000 Rio Brancos Rd., Aztec, N.M. 87410
Phone: (505) 334-6178 Fax: (505) 334-6170

DISTRICT IV
1220 S. St. Francis Dr., Santa Fe, NM 87505
Phone: (505) 476-3460 Fax: (505) 476-3462

State of New Mexico
Energy, Minerals & Natural Resources Department

DEC 22 2015

Form C-102
Revised August 1, 2011

Submit one copy to appropriate
District Office

OIL CONSERVATION DIVISION
1220 South St. Francis Dr.
Santa Fe, NM 87505

☐ AMENDED REPORT
☒ AS-DRILLED

WELL LOCATION AND ACREAGE DEDICATION PLAT

¹ API Number 30-045-35646		² Pool Code 97232	³ Pool Name BASIN MANCOS GAS POOL
⁴ Property Code 315301	⁵ Property Name CHACO 23-08-3		⁶ Well Number 2H
⁷ OGRID No. 162928	⁸ Operator Name ENERGEN RESOURCES CORPORATION		⁹ Elevation 6912.3'

¹⁰ Surface Location

UL or lot no.	Section	Township	Range	Lot Idn	Feet from the	North/South line	Feet from the	East/West line	County
H	3	23N	8W		2057'	NORTH	187'	EAST	SAN JUAN

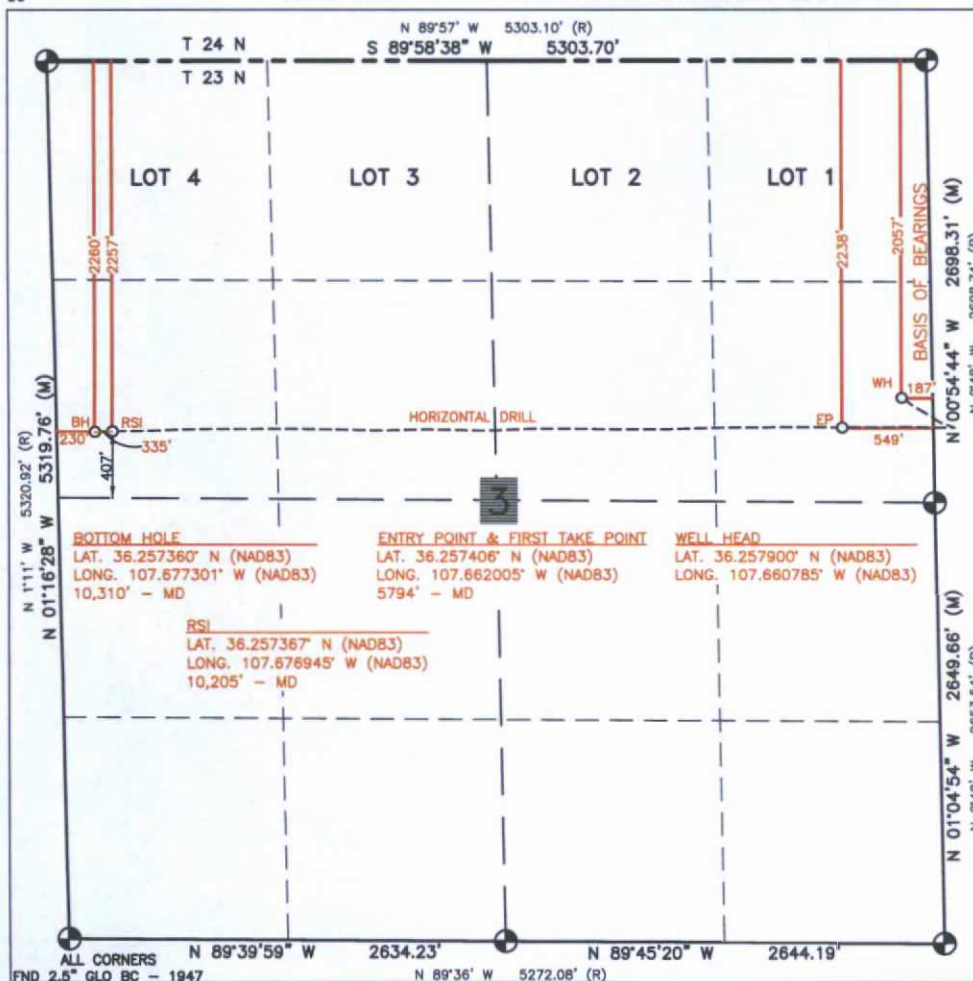
¹¹ Bottom Hole Location If Different From Surface

UL or lot no.	Section	Township	Range	Lot Idn	Feet from the	North/South line	Feet from the	East/West line	County
E	3	23N	8W		2260'	NORTH	230'	WEST	SAN JUAN

¹² Dedicated Acres 323.20 ACRES - S/2 N/2 LOTS 1 THRU 4 OF SECTION 3	¹³ Joint or Infill	¹⁴ Consolidation Code	¹⁵ Order No. NSL 7246-A
---	-------------------------------	----------------------------------	---------------------------------------

NO ALLOWABLE WILL BE ASSIGNED TO THIS COMPLETION UNTIL ALL INTERESTS HAVE BEEN CONSOLIDATED
OR A NON-STANDARD UNIT HAS BEEN APPROVED BY THE DIVISION

16

¹⁷ OPERATOR CERTIFICATION

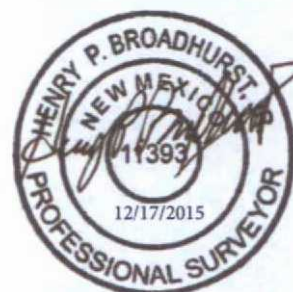
I hereby certify that the information contained herein is true and complete to the best of my knowledge and belief, and that this organization either owns a working interest or unless mineral interest in the land including the proposed bottom hole location or has a right to drill this well at this location pursuant to a contract with an owner of such a mineral or working interest, or to a voluntary pooling agreement or a compulsory pooling order heretofore entered by the division.

Signature: *Anna Stotts* Date: 12/21/15
Printed Name: Anna Stotts
E-mail Address: astotts@energen.com

SURVEYOR CERTIFICATION

I hereby certify that the well location shown on this plat was plotted from field notes of actual surveys made by me or under my supervision, and that the same is true and correct to the best of my belief.

OCTOBER, 2015
Date of Survey
Signature and Seal of Professional Surveyor:



Certificate Number 11393

District I
1625 N. French Drive, Hobbs, NM 88240
Phone: (575) 393-6161 Fax: (575) 393-0720

State of New Mexico
Energy, Minerals & Natural Resources Department

Form C-102
Revised August 1, 2011

Submit one copy to
Appropriate District Office

District II
811 S. First Street, Artesia, NM 88210
Phone: (575) 748-1283 Fax: (575) 748-9720

District III
1000 Rio Brazos Road, Aztec, NM 87410
Phone: (505) 334-6178 Fax: (505) 334-6170

District IV
1220 S. St. Francis Drive, Santa Fe, NM 87505
Phone: (505) 476-3460 Fax: (505) 476-3462

OIL CONSERVATION DIVISION

1220 South St. Francis Drive
Santa Fe, NM 87505

☒ AMENDED REPORT

WELL LOCATION AND ACREAGE DEDICATION PLAT

*API Number 30-045-38179		*Pool Code 97232	*Pool Name BASIN MANCOS	
*Property Code 327184	*Property Name ZEUS 2308 03			*Well Number 4H
*GRID No. 289408	*Operator Name LOGOS OPERATING, LLC			*Elevation 6908'

¹⁰ Surface Location

U. or lot no.	Section	Township	Range	Lot 1st	Feet from the	North/South line	Feet from the	East/West line	County
H	3	23N	8W		1938	NORTH	223	EAST	SAN JUAN

¹¹ Bottom Hole Location If Different From Surface

U.L. or Lot no.	Section	Township	Range	Lot Idn	Feet from the	North/South line	Feet from the	East/West line	County	
D	1	23N	8W	4	755	NORTH	1100	WEST	SAN JUAN	
¹² Dedicated Acres 403.72 W/2 NW/4 - Section 1 N/2 - Section 2						¹³ Joint or Infill		¹⁴ Consolidation Code		¹⁵ Order No.

NO ALLOWABLE WILL BE ASSIGNED TO THIS COMPLETION UNTIL ALL INTERESTS HAVE BEEN CONSOLIDATED OR A NON-STANDARD UNIT HAS BEEN APPROVED BY THE DIVISION

¹⁷ OPERATOR CERTIFICATION

I hereby certify that the information contained herein is true and complete to the best of my knowledge and belief, and that this organization either owns a working interest or unleased mineral interest in the land including the proposed bottom-hole location or has a right to drill this well at this location pursuant to a contract with an owner of such a mineral working interest, or has a delivery pooling agreement or a compulsory pooling order heretofore entered by the division.

Signature Tanfani Date 1/28/20

Signature
Tamra Sessions

Printed Name
tsessions@logosresourcesllc.com
E-mail Address

¹⁸ SURVEYOR CERTIFICATION

I hereby certify that the well location shown on this plat was plotted from field notes of actual surveys made by me or under my supervision, and that the same is true and correct to the best of my belief.

Date Revised: JANUARY 27, 2020
Date of Survey: MAY 4, 2019

Signature and Seal of Professional Surveyor



JASON C. EDWARDS

Certificate Number 15269

SURFACE LOCATION (A)
1938' FNL 223' FEL
SECTION 3, T23N, R8W
LAT: 36.258220°N
LONG: 107.660305°W
DATUM: NAD1927

LAT: 36.258232°N
LONG: 107.660916°W
DATUM: NAD1983

NO7°28.6'E 1195.8'

POINT-OF-ENTRY (B)
753' FNL 50' FEL
SECTION 3, T23N, R8W
LAT: 36.261476°N
LONG: 107.659770°W
DATUM: NAD1927

LAT: 36.261489 °N
LONG: 107.660381 °W
DATUM: NAD1983

N89°59.2'E 150.0'

LAST PERFORATION (C)
753' FNL 100' FWL
SECTION 2, T23N, R8W
LAT: 36.261475°N
LONG: 107.659262°W
DATUM: NAD1927

LAT: 36.261488 *N
LONG: 107.659872 *W
DATUM: NAD1983

N 89° 59.2'E 6197.0'

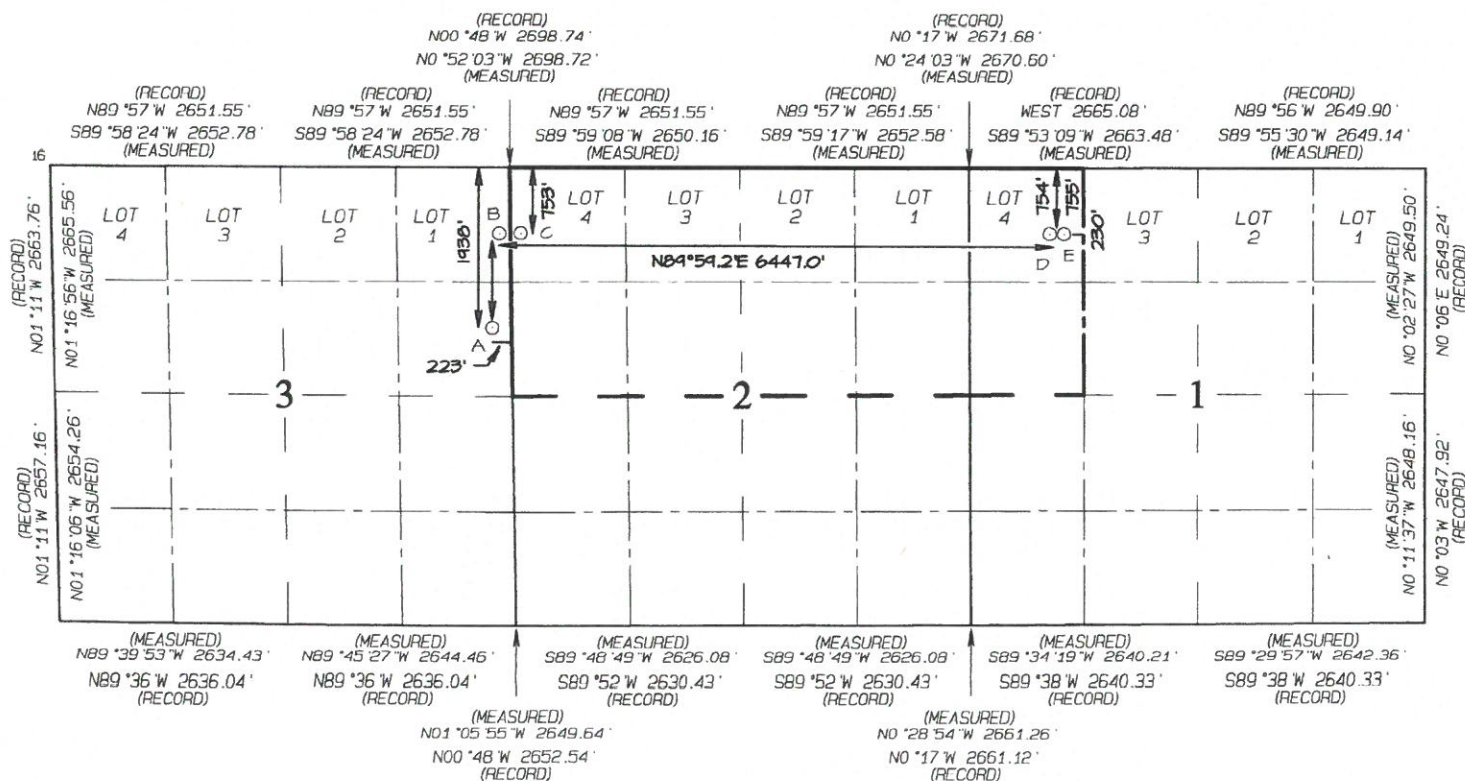
FIRST PERFORATION (D)
754' FNL 1000' FWL
SECTION 1, T23N, R8W
LAT: 36.261447°N
LONG: 107.638242°W
DATUM: NAD1927

LAT: 36.261460 °N
LONG: 107.638852 °W
DATUM: NAD1983

10001 AC B30088

END-OF-LATERAL (E)
755' FNL 1100' FWL
SECTION 1, T23N, R8W
LAT: 36.261446°N
LONG: 107.637903°W
DATUM: NAD1927

LAT: 36.261459°N
LONG: 107.638513°W
DATUM: NAD1983



Submit one copy to
Appropriate District Office

District II
811 S. First Street, Artesia, NM 88210
Phone: (575) 748-1283 Fax: (575) 748-9720

District III
1000 Rio Brazos Road, Aztec, NM 87410
Phone: (505) 334-6178 Fax: (505) 334-6170

District IV
1220 S. St. Francis Drive, Santa Fe, NM 87505
Phone: (505) 476-3460 Fax: (505) 476-3462

OIL CONSERVATION DIVISION

1220 South St. Francis Drive
Santa Fe, NM 87505

☐ AMENDED REPORT

WELL LOCATION AND ACREAGE DEDICATION PLAT

¹ API Number 30-045-38180	² Pool Code 97232	³ Pool Name BASIN MANCOS
⁴ Property Code 327185	⁵ Property Name OMEGA 2308 03	⁶ Well Number 5H
⁷ GRID No. 289408	⁸ Operator Name LOGOS OPERATING, LLC	⁹ Elevation 6908'

¹⁰ Surface Location

UL or lot no.	Section	Township	Range	Lot Idn	Feet from the	North/South line	Feet from the	East/West line	County
H	3	23N	8W		1960	NORTH	223	EAST	SAN JUAN

¹¹ Bottom Hole Location If Different From Surface

UL or lot no.	Section	Township	Range	Lot Idn	Feet from the	North/South line	Feet from the	East/West line	County
E	1	23N	8W		1878	NORTH	1098	WEST	SAN JUAN
¹² Dedicated Acres 403.72					W/2 NW/4 - Section 1 N/2 - Section 2		¹³ Joint or Infill	¹⁴ Consolidation Code	¹⁵ Order No.

NO ALLOWABLE WILL BE ASSIGNED TO THIS COMPLETION UNTIL ALL INTERESTS HAVE
BEEN CONSOLIDATED OR A NON-STANDARD UNIT HAS BEEN APPROVED BY THE DIVISION

17 OPERATOR CERT. **Page 12 of 28**

I hereby certify that the information contained herein is true and complete to the best of my knowledge and belief, and that this organization either owns a working interest or an unleased mineral interest in the land including the proposed bottom-hole location or has a right to drill this well at this location pursuant to a contract with an owner of such a mineral or working interest, or to a voluntary pooling agreement or a compulsory pooling order heretofore entered by the division.

Tamra Sessions 1/28/20

Signature Date

Tamra Sessions

Printed Name
tsessions@logosresourcesllc.com

E-mail Address

¹⁸ SURVEYOR CERTIFICATION

I hereby certify that the well location shown on this plat was plotted from field notes of actual surveys made by me or under my supervision, and that the same is true and correct to the best of my belief.

Date Revised: JANUARY 27, 2020
Date of Survey: MAY 4, 2019

Signature and Seal of Professional Surveyor



JASON C. EDWARDS

Certificate Number 15269

SURFACE LOCATION (A)
1960' FNL 223' FEL
SECTION 3, T23N, R8W
LAT: 36.258159°N
LONG: 107.660303°W
DATUM: NAD1927

LAT: 36.258172°N
LONG: 107.660913°W
DATUM: NAD1983

NT3°44.9'E 179.5'

POINT-OF-ENTRY (B)
1910' FNL 50' FEL
SECTION 3, T23N, R8W
LAT: 36.258296°N
LONG: 107.659718°W
DATUM: NAD1927

LAT: 36.258308°N
LONG: 107.660329°W
DATUM: NAD1983

N89°41.1'E 150.0'

LAST PERFORATION (C)
1909' FNL 100' FWL
SECTION 2, T23N, R8W
LAT: 36.258297°N
LONG: 107.659209°W
DATUM: NAD1927

LAT: 36.258310°N
LONG: 107.659820°W
DATUM: NAD1983

N89°41.1'E 6105.4'

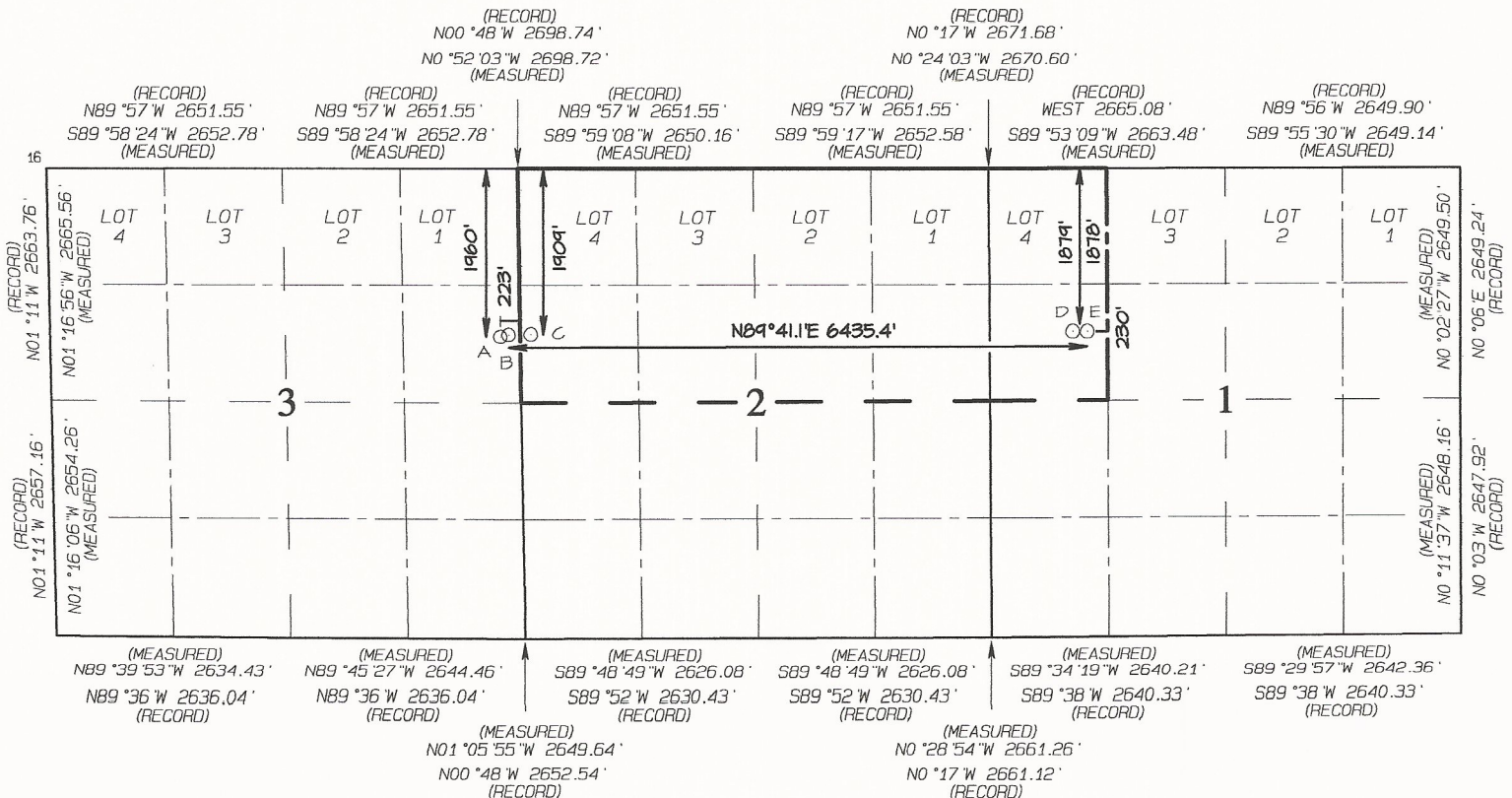
FIRST PERFORATION (D)
1879' FNL 998' FWL
SECTION 1, T23N, R8W
LAT: 36.258358°N
LONG: 107.638230°W
DATUM: NAD1927

LAT: 36.258371°N
LONG: 107.638840°W
DATUM: NAD1983

N89°41.1'E 100.0'

END-OF-LATERAL (E)
1878' FNL 1098' FWL
SECTION 1, T23N, R8W
LAT: 36.258359°N
LONG: 107.637891°W
DATUM: NAD1927

LAT: 36.258372°N
LONG: 107.638501°W
DATUM: NAD1983



Tamra Sessions

From: Jude Dysart <jude.dysart@whiptailmidstream.com>
Sent: Monday, April 19, 2021 12:42 PM
To: Tamra Sessions; Andy Pickle; Ernie Johnson
Cc: Kelly Maxwell; Marie Florez; Etta Trujillo
Subject: RE: C-106 Letter from Transporter: LOGOS Omega Pad

Tamra,

We approve the use of the Pipeline Transfer LACT equipment on the Chaco-Zeus-Omega 2308 03 well pad to transfer product from the wells below to Whiptail Midstream, LLC's pipeline system.

- Chaco 23 08 03 1H / API #30-045-35647 / UNIT H (SE/NE) Sec. 3, T23N, R8W, NMPPM
- Chaco 23 08 03 2H / API #30-045-35646 / UNIT H (SE/NE) Sec. 3, T23N, R8W, NMPPM
- Chaco 23 08 03 3H / API #30-045-38171 / UNIT H (SE/NE) Sec. 3, T23N, R8W, NMPPM (to be drilled at a later date)
- Zeus 2308 03 4H / API #30-045-38179 / UNIT H (SE/NE) Sec. 3, T23N, R8W, NMPPM
- Omega 2308 03 5H / API #30-045-38180 / UNIT H (SE/NE) Sec. 3, T23N, R8W, NMPPM

Jude Dysart

VP – Engineering & Technical Services

Whiptail Midstream

15 W. 6th Street, Suite 2901, Tulsa, OK 74119

O: 918.289.2145, M: 405.834.9402

Jude.Dysart@WhiptailMidstream.com



[From receipt to delivery, the midstream partner you count on.](#)

From: Tamra Sessions <tsessions@logosresourcesllc.com>

Sent: Monday, April 19, 2021 12:58 PM

To: Jude Dysart <jude.dysart@whiptailmidstream.com>; Andy Pickle <andy.pickle@whiptailmidstream.com>; Ernie Johnson <ernie.johnson@whiptailmidstream.com>

Cc: Kelly Maxwell <kmaxwell@logosresourcesllc.com>; Marie Florez <mflorez@logosresourcesllc.com>; Etta Trujillo <etrujillo@logosresourcesllc.com>

Subject: C-106 Letter from Transporter: LOGOS Omega Pad

Good afternoon Jude,

LOGOS is working on the C-106 Letter from Transporter submittal to NMOCD for Chaco-Zeus-Omega 2308 03 well pad. Please reply back to this email with your approval.

LOGOS Operating, LLC is requesting approval from the transporter to utilize Pipeline Transfer LACT equipment on the Chaco-Zeus-Omega 2308 03 well pad. Product from the below listed wells would be

produced through the LACT equipment into Whiptail Midstream, LLC's (transporter) pipeline system. Whiptail Midstream, LLC will be responsible for transporting LOGOS Operating, LLC's product to sales.

OMEGA 2308 03 PIPELINE LACT UNIT

WELLS TO BE SERVED BY PIPELINE LACT UNIT:

- Chaco 23 08 03 1H / API #30-045-35647 / UNIT H (SE/NE) Sec. 3, T23N, R8W, NMPPM
- Chaco 23 08 03 2H / API #30-045-35646 / UNIT H (SE/NE) Sec. 3, T23N, R8W, NMPPM
- Chaco 23 08 03 3H / API #30-045-38171 / UNIT H (SE/NE) Sec. 3, T23N, R8W, NMPPM (to be drilled at a later date)
- Zeus 2308 03 4H / API #30-045-38179 / UNIT H (SE/NE) Sec. 3, T23N, R8W, NMPPM
- Omega 2308 03 5H / API #30-045-38180 / UNIT H (SE/NE) Sec. 3, T23N, R8W, NMPPM

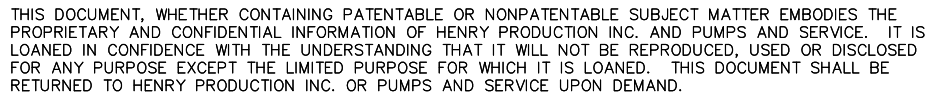
Tamra Sessions

Regulatory Specialist

Office 505-324-4145

tsessions@logosresourcesllc.com





HPI Since 1962
GAS COMPRESSION

PS SINCE 1978
& PUMPS SERVICE

3440 Morning Star Drive, Farmington, NM 87401 (505) 327-0411

Drawing Name:		
P & ID		
Project:		
ENDURING TRIPLE PUMP TRANSFER - LACT		
Scale:	Drawing No.:	Rev.
NTS	2222-01	8

**NOTICE OF INTENTION TO UTILIZE CUSTODY TRANSFER EQUIPMENT
OMEGA 2308 03 PIPELINE LACT UNIT**

WELLS TO BE SERVED BY PIPELINE LACT UNIT:

Chaco 23 08 03 1H / API #30-045-35647 / UNIT H (SE/NE) Sec. 3, T23N, R8W, NMPM
Chaco 23 08 03 2H / API #30-045-35646 / UNIT H (SE/NE) Sec. 3, T23N, R8W, NMPM
Chaco 23 08 03 3H / API #30-045-38171 / UNIT H (SE/NE) Sec. 3, T23N, R8W, NMPM
Zeus 2308 03 4H / API #30-045-38179 / UNIT H (SE/NE) Sec. 3, T23N, R8W, NMPM
Omega 2308 03 5H / API #30-045-38180 / UNIT H (SE/NE) Sec. 3, T23N, R8W, NMPM

19.15.18.15 AUTOMATIC CUSTODY TRANSFER EQUIPMENT:

A. Oil shall be received and measured in facilities of an approved design. The facilities shall permit the testing of each well at reasonable intervals and may be comprised of manually gauged, closed stock tanks for which the operator of the ACT system has prepared proper strapping tables, or of ACT equipment. The division shall permit ACT equipment's use only after the operator complies with the following. The operator shall file with the division form C-106 and receive approval for use of the ACT equipment prior to transferring oil through the ACT system. The carrier shall not accept delivery of oil through the ACT system until the division has approved form C-106.

- ***See flow process diagram attached.***

B. The operator of the ACT system shall submit form C-106 to the appropriate division district office, which is accompanied by the following:

- (1) plat of the lease showing all wells that the any well operator will produce into the ACT system;
 - ***Attached as part of Form C-106 Notice of Intent.***
- (2) schematic diagram of the ACT equipment, showing on the diagram all major components such as surge tanks and their capacity, extra storage tanks and their capacity, transfer pumps, monitors, reroute valves, treaters, samplers, strainers, air and gas eliminators, back pressure valves and metering devices (indicating type and capacity, *i.e.* whether automatic measuring tank, positive volume metering chamber, weir-type measuring vessel or positive displacement meter); the schematic diagram shall also show means employed to prove the measuring device's accuracy; and
 - ***Attached as part of Form C-106 Notice of Intent.***
- (3) letter from transporter agreeing to utilization of ACT system as shown on schematic diagram.
 - ***Attached as part of Form C-106 Notice of Intent.***

C. The division shall not approve form C-106 unless the operator of the ACT system will install and operate the ACT system in compliance with the following requirements.

- (1) Provision is made for accurate determination and recording of uncorrected volume and applicable temperature, or of temperature corrected volume. The system's overall accuracy shall equal or surpass manual methods.
 - ***The LACT system is more accurate when compared to manual tank. It is proved per BLM Onshore Order #4 Measurement of Oil and API MPMS Chapter 4 Proving Systems; with a volumetric prover that meets the requirements set forth in Onshore Order #4. The LACT also has a temperature RTD which will be calibrated semi-annually, unless more frequent verification is requested by the division.***
- (2) Provision is made for representative sampling of the oil transferred for determination of API gravity and BS&W content.
 - ***The LACT is equipped with a flow proportional sampler (sample probe and actuated valve). The sampled fluid is stored in a sealed cylinder that is used for API gravity and S&W determination.***
- (3) Provision is made if required by either the oil's producer or the transporter to give adequate assurance that the ACT system runs only merchantable oil.
 - ***The LACT is equipped with a water cut analyzer that communicated with the flow computer. When the S&W set point is reached the divert valve will engage sending non-merchantable oil to a divert tank. The set point can be adjusted in the flow computer but only if agreed upon by both shipper and producer.***
- (4) Provision is made for set-stop counters to stop the flow of oil through the ACT system at or prior to the time the allowable has been run. Counters shall provide non-reset totalizers that are visible for inspection at all times.
 - ***The Coriolis meter has a non-resettable totalizer which is always visibly available on the LCD display.***

- (5) Necessary controls and equipment are enclosed and sealed, or otherwise arranged to provide assurance against, or evidence of, accidental or purposeful mismeasurement resulting from tampering.
- ***Required ports are sealed and tracked in the seal log.***
- (6) The ACT system's components are properly sized to ensure operation within the range of their established ratings. All system components that require periodic calibration or inspection for proof of continued accuracy are readily accessible; the frequency and methods of the calibration or inspection shall be as set forth in Paragraph (12) of Subsection C of 19.15.18.15 NMAC.
- ***The Coriolis is proved per BLM Onshore Order #4 Measurement of Oil and API MPMS Chapter 4 Proving Systems; with a volumetric prover that meets the requirements set forth in Onshore Order #4. The prover is NIST traceable and water drawn on a bi-annual basis. Proving will be consistent with Onshore Order #4, unless a variance is granted by the Division. NMOCD representatives are sent the schedule to witness if desired. The temperature transmitter is verified on a semi-annual basis, unless more frequent verification is requested by the Division. The water cut analyzer is calibrated as needed.***
- (7) The control and recording system includes adequate fail-safe features that provide assurance against mismeasurement in the event of power failure, or the failure of the ACT system's component parts.
- ***In the event of power failure, the divert valve mechanically goes to "failed state" and no longer sales oil but only sends it to the divert tank.***
 - ***All of the historized volume data is stored in the flow computer memory with battery backup and is also transmitted by SCADA, multiple times a day, to an office server. So even during a power failure no oil volume is lost.***
 - ***In the event of a malfunction, the LACT unit is programmed to shut off and the divert valve is forced to close and no longer sales oil but only sends it to the divert tank. The malfunction is also logged by the flow computer.***
- (8) The ACT system and allied facilities include fail-safe equipment as may be necessary, including high level switches in the surge tank or overflow storage tank that, in the event of power failure or malfunction of the ACT or other equipment, will shut down artificially lifted wells connected to the ACT system and will shut in flowing wells at the well-head or at the header manifold, in which latter case the operator of the ACT system shall pressure test all flowlines to at least 1½ times the maximum well-head shut-in pressure prior to the ACT system's initial use and every two years thereafter.
- ***Hi level switches are in place and will shut the well in at the inlet to the production unit in the event of a full tank. Flow lines were tested to 1 ½ times shut in pressure at initial construction. Testing will commence every two years to ensure piping integrity.***
- (9) As an alternative to the requirements of Paragraph (8) of Subsection C of 19.15.18.15 NMAC the producer shall provide and at all times maintain a minimum of available storage capacity above the normal high working level of the surge tank to receive and hold the amount of oil that may be produced during maximum unattended time of lease operation.
- ***N/A***
- (10) In all ACT systems employing automatic measuring tanks, weir-type measuring vessels, positive volume metering chambers or any other volume measuring container, the container and allied components shall be properly calibrated prior to initial use and shall be operated, maintained and inspected as necessary to ensure against incrustation, changes in clingage factors, valve leakage or other leakage and improper action of floats, level detectors, etc.
- ***N/A (Coriolis Meter)***
- (11) In ACT systems employing positive displacement meters, the meter and allied components shall be properly calibrated prior to initial use and shall be operated, maintained and inspected as necessary to ensure against oil mismeasurement.
- ***The Coriolis is proved per BLM Onshore Order #4 Measurement of Oil and API MPMS Chapter 4 Proving Systems; with a volumetric prover that meets the requirements set forth in Onshore Order #4. The prover is NIST traceable and water drawn on a bi-annual basis. Monthly proving will continue per the rule, unless a variance is granted by the Division. NMOCD representatives are sent the schedule to witness if desired. The temperature transmitter is verified on a semi-annual basis, unless more frequent verification is requested by the Division.***

(12) The operator of the ACT system shall check the measuring and recording devices of ACT systems for accuracy at least once each month unless it has obtained an exception to such determination from the division. Where applicable, the operator of the ACT system shall use API standard 1101, Measurement of Petroleum Hydrocarbons by Positive Displacement Meter. Meters may be proved against master meters, portable prover tanks or prover tanks permanently installed on the lease. If the operator of the ACT system uses permanently installed prover tanks, the distance between the opening and closing levels and the provision for determining the opening and closing readings shall be sufficient to detect variations of 5/100 of one percent. The operator of the ACT system shall file reports of determination on the division form entitled "meter test report" or on another acceptable form in duplicate with the appropriate division district office.

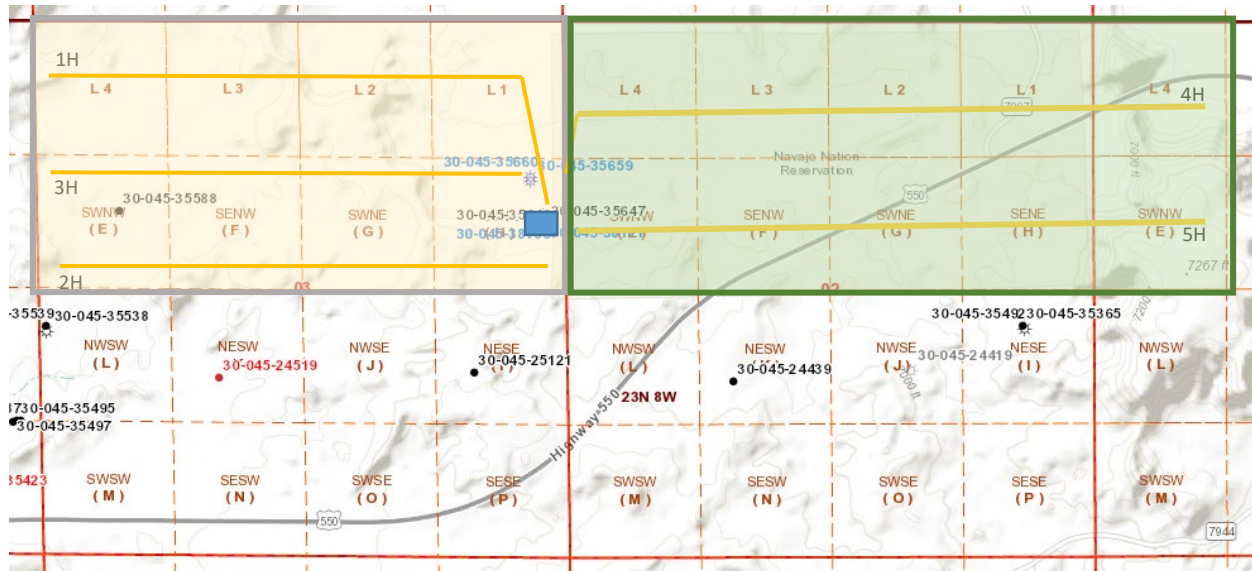
- ***The Coriolis is proved per BLM Onshore Order #4 Measurement of Oil and API MPMS Chapter 4 Proving Systems; with a volumetric prover that meets the requirements set forth in Onshore Order #4. The prover is NIST traceable and water drawn on a bi-annual basis. Monthly proving will continue per the rule, unless a variance is granted by the Division. NMOCD representatives are sent the schedule to witness if desired. The temperature transmitter is verified on a semi-annual basis, unless more frequent verification is requested by the Division.***

(13) To obtain an exception to the requirement in Paragraph (12) of Subsection C of 19.15.18.15 NMAC that all measuring and recording devices be checked for accuracy once each month, either the producer or transporter may file a request with the director setting forth facts pertinent to the exception. The application shall include a history of the average factors previously obtained, both tabulated and plotted on a graph of factors versus time, showing that the particular installation has experienced no erratic drift. The applicant shall also furnish evidence that the other interested party has agreed to the exception. The director may then set the frequency for determination of the system's accuracy at the interval which the director deems prudent.

- ***N/A***

D. The division may revoke its approval of an ACT system's form C-106 if the system's operator fails to operate it in compliance with 19.15.18.15 NMAC.

[19.15.18.15 NMAC - Rp, 19.15.5.309 NMAC, 12/1/08]



LOGOS OPERATING, LLC

OMEGA 2308 03 PAD

Lease Plat Map

San Juan County, NM

	Well Pad
	Laterals
	Lease NMNM18463
	CA NMNM141953

TIGHT HOLE

DISTRICT I
1625 N. French Dr., Hobbs, N.M. 88240
Phone: (575) 393-6161 Fax: (575) 393-0720

DISTRICT II
811 S. First St., Artesia, N.M. 88210
Phone: (575) 748-1283 Fax: (575) 748-9720

DISTRICT III
1000 Rio Brazos Rd., Antec, N.M. 87410
Phone: (505) 334-6178 Fax: (505) 334-6170

DISTRICT IV
1220 S. St. Francis Dr., Santa Fe, NM 87505
Phone: (505) 476-3460 Fax: (505) 476-3460

State of New Mexico
Energy, Minerals & Natural Resources Department

OIL CONSERVATION DIVISION
1220 South St. Francis Dr.
Santa Fe, NM 87505

Submit one copy to appropriate
District Office

☐ AMENDED REPORT
☒ AS-DRILLED

WELL LOCATION AND ACREAGE DEDICATION PLAT

1 API Number 30-045-35647		2 Pool Code 97232		3 Pool Name BASIN MANCOS GAS	
4 Property Code 315301		5 Property Name CHACO 23-08-3			6 Well Number 1H
7 OGRID No. 162928		8 Operator Name ENERGEN RESOURCES CORPORATION			9 Elevation 6912.3'

¹⁰ Surface Location

UL or lot no.	Section	Township	Range	Lot Idn	Feet from the	North/South line	Feet from the	East/West line	County
H	3	23N	8W		2013'	NORTH	186'	EAST	SAN JUAN

¹¹ Bottom Hole Location If Different From Surface

UL or lot no. D	Section 3	Township 23N	Range 8W	Lot Idn 4	Feet from the 411'	North/South line NORTH	Feet from the 249'	East/West line WEST	County SAN JUAN
¹² Dedicated Acres PROJECT AREA 323.20 ACRES - S/2 N/2 & LOTS 1 THRU 4 OF SECTION 3			¹³ Joint or Infill		¹⁴ Consolidation Code		¹⁵ Order No. NSL 7245-A		

NO ALLOWABLE WILL BE ASSIGNED TO THIS COMPLETION UNTIL ALL INTERESTS HAVE BEEN CONSOLIDATED
OR A NON-STANDARD UNIT HAS BEEN APPROVED BY THE DIVISION

18

N 89°57' W 5303.10' (R)
T 24 N
T 23 N
S 89°58'38" W 5303.70'
BH 411'
407'
249'
347'
RSI
HORIZONTAL DRILL
375'
378'
474'
EP
LOT 4 LOT 3 LOT 2 LOT 1
RSI / LAST TAKE POINT
LAT. 36.262451° N (NAD83)
LONG. 107.677034° W (NAD83)
10,662' - MD
ENTRY POINT / FIRST TAKE POINT
LAT. 36.262516° N (NAD83)
LONG. 107.661838° W (NAD83)
6178' - MD
BOTTOM HOLE
LAT. 36.262441° N (NAD83)
LONG. 107.677367° W (NAD83)
10,780' - MD
WELL HEAD
LAT. 36.258023° N (NAD83)
LONG. 107.660784° W (NAD83)
WH 188'
BASIS OF BEARINGS
2013'
N 00°54'44" W 2698.31' (M)
N 0°48' W 2698.74' (R)
N 01°04'54" W 2649.66' (M)
N 01°16'28" W 5319.76' (M)
N 1°11' W 5320.92' (R)
N 89°39'59" W 2634.23'
N 89°36' W 5272.08' (R)
N 89°45'20" W 2644.19'
ALL CORNERS
FND 2.5" GLO. RC - 1947
OIL CONS. DIV. DIST. 3
JAN 08 2016

17	OPERATOR CERTIFICATION
----	------------------------

I hereby certify that the information contained herein is true and complete to the best of my knowledge and belief, and that this organization either owns a working interest or unleased mineral interest in the land including the proposed bottom hole location or has a right to drill this well at this location pursuant to a contract with an owner of such a mineral or working interest, or to a voluntary pooling agreement or a compulsory pooling order heretofore entered by the division.

Signature James McAndrews Date 01/07/16

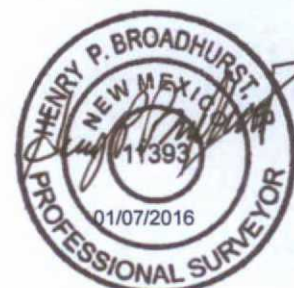
Theresa McAndrews
Printed Name
tmcandre@energen.com
E-mail Address

SURVEYOR CERTIFICATION

I hereby certify that the well location shown on this plat was plotted from field notes of actual surveys made by me or under my supervision, and that the same is true and correct to the best of my belief.

DECEMBER 16, 2015

Date of Survey _____
Signature and Seal of Professional Surveyor: _____



Certificate Number	11393
--------------------	-------

OIL CONS. DIV DIST. 3

CONFIDENTIAL**TIGHT HOLE**

DISTRICT I
1625 N. French Dr., Hobbs, N.M. 88240
Phone: (575) 393-6161 Fax: (575) 393-0720

DISTRICT II
811 S. First St., Artesia, N.M. 88210
Phone: (575) 748-1283 Fax: (575) 748-9720

DISTRICT III
1000 Rio Brancos Rd., Aztec, N.M. 87410
Phone: (505) 334-6178 Fax: (505) 334-6170

DISTRICT IV
1220 S. St. Francis Dr., Santa Fe, NM 87505
Phone: (505) 476-3460 Fax: (505) 476-3462

State of New Mexico
Energy, Minerals & Natural Resources Department

DEC 22 2015

Form C-102
Revised August 1, 2011

OIL CONSERVATION DIVISION
1220 South St. Francis Dr.
Santa Fe, NM 87505

Submit one copy to appropriate
District Office

☐ AMENDED REPORT
☒ AS-DRILLED

WELL LOCATION AND ACREAGE DEDICATION PLAT

¹ API Number 30-045-35646		² Pool Code 97232	³ Pool Name BASIN MANCOS GAS POOL
⁴ Property Code 315301	⁵ Property Name CHACO 23-08-3		⁶ Well Number 2H
⁷ OGRID No. 162928	⁸ Operator Name ENERGEN RESOURCES CORPORATION		⁹ Elevation 6912.3'

¹⁰ Surface Location

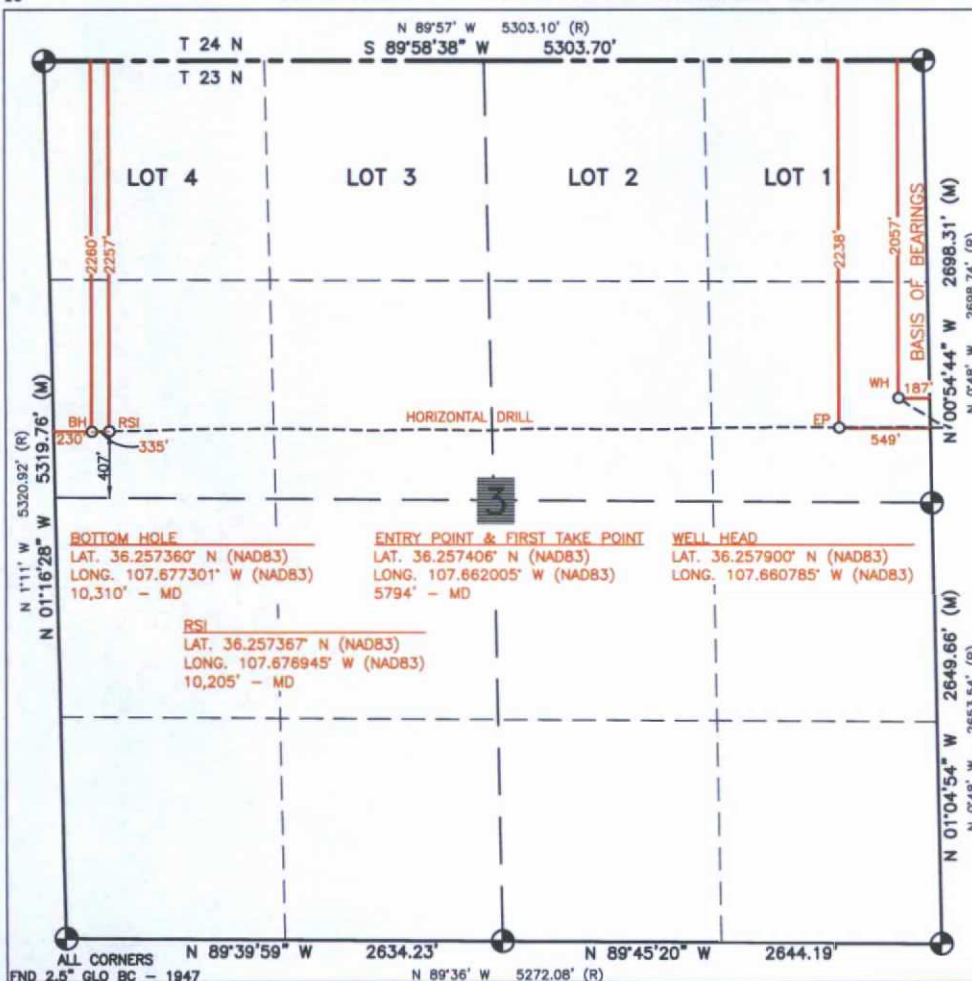
UL or lot no.	Section	Township	Range	Lot Idn	Feet from the	North/South line	Feet from the	East/West line	County
H	3	23N	8W		2057'	NORTH	187'	EAST	SAN JUAN

¹¹ Bottom Hole Location If Different From Surface

UL or lot no.	Section	Township	Range	Lot Idn	Feet from the	North/South line	Feet from the	East/West line	County
E	3	23N	8W		2260'	NORTH	230'	WEST	SAN JUAN

¹² Dedicated Acres 323.20 ACRES - S/2 N/2 LOTS 1 THRU 4 OF SECTION 3	¹³ Joint or Infill	¹⁴ Consolidation Code	¹⁵ Order No. NSL 7246-A
---	-------------------------------	----------------------------------	---------------------------------------

NO ALLOWABLE WILL BE ASSIGNED TO THIS COMPLETION UNTIL ALL INTERESTS HAVE BEEN CONSOLIDATED
OR A NON-STANDARD UNIT HAS BEEN APPROVED BY THE DIVISION

**17 OPERATOR CERTIFICATION**

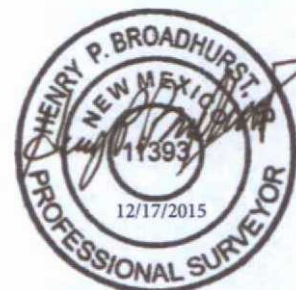
I hereby certify that the information contained herein is true and complete to the best of my knowledge and belief, and that this organization either owns a working interest or unless mineral interest in the land including the proposed bottom hole location or has a right to drill this well at this location pursuant to a contract with an owner of such a mineral or working interest, or to a voluntary pooling agreement or a compulsory pooling order heretofore entered by the division.

Anna Stotts 12/21/15
Signature Date
Anna Stotts
Printed Name
astotts@energen.com
E-mail Address

SURVEYOR CERTIFICATION

I hereby certify that the well location shown on this plat was plotted from field notes of actual surveys made by me or under my supervision, and that the same is true and correct to the best of my belief.

OCTOBER, 2015
Date of Survey
Signature and Seal of Professional Surveyor:



Certificate Number 11393

District I
1625 N. French Drive, Hobbs, NM 88240
Phone: (575) 393-6161 Fax: (575) 393-0720

District II
811 S. First Street, Artesia, NM 88210
Phone: (505) 748-1283 Fax: (505) 748-9720

District III
1000 Rio Brazos Road, Aztec, NM 87410
Phone: (505) 334-6178 Fax: (505) 334-6170

District IV
1220 S. St. Francis Drive, Santa Fe, NM 87505
Phone: (505) 476-3460 Fax: (505) 476-3462

State of New Mexico
Energy, Minerals & Natural Resources Department

Form C-102
Revised August 1, 2011

Submit one copy to
Appropriate District Office

OIL CONSERVATION DIVISION
1220 South St. Francis Drive
Santa Fe, NM 87505

☐ AMENDED REPORT

WELL LOCATION AND ACREAGE DEDICATION PLAT

*API Number 30-045-38171		*Pool Code 97232		*Pool Name BASIN MANCOS	
*Property Code 316581		*Property Name CHACO 23-08-3			*Well Number 3H
*GRID No. 289408		*Operator Name LOGOS OPERATING, LLC			*Elevation 6908'

¹⁰ Surface Location

UL or lot no.	Section	Township	Range	Lot Idn	Feet from the	North/South line	Feet from the	East/West line	County
H	3	23N	8W		1982	NORTH	223	EAST	SAN JUAN

¹¹ Bottom Hole Location If Different From Surface

UL or lot no.	Section	Township	Range	Lot Idn	Feet from the	North/South line	Feet from the	East/West line	County
D	3	23N	8W	4	1325	NORTH	20	WEST	SAN JUAN

¹² Dedicated Acres 323.20 Acres N/2 - Section 3					¹³ Joint or Infill		¹⁴ Consolidation Code		¹⁵ Order No.	
--	--	--	--	--	-------------------------------	--	----------------------------------	--	-------------------------	--

END-OF-LATERAL (A)
1325' FNL 20' FWL
SECTION 3, T23N, R8W
LAT: 36.259922°N
LONG: 107.677470°W
DATUM: NAD1927

LAT: 36.259935°N
LONG: 107.678081°W
DATUM: NAD1983

FIRST PERFORATION (B)
1324' FNL 100' FWL
SECTION 3, T23N, R8W
LAT: 36.259922°N
LONG: 107.677199°W
DATUM: NAD1927

LAT: 36.259935°N
LONG: 107.677810°W
DATUM: NAD1983

LAST PERFORATION (C)
1308' FNL 100' FWL
SECTION 3, T23N, R8W
LAT: 36.259949°N
LONG: 107.659915°W
DATUM: NAD1927

LAT: 36.259962°N
LONG: 107.660525°W
DATUM: NAD1983

POINT-OF-ENTRY (D)
1308' FNL 50' FWL
SECTION 2, T23N, R8W
LAT: 36.259950°N
LONG: 107.659406°W
DATUM: NAD1927

LAT: 36.259963°N
LONG: 107.660017°W
DATUM: NAD1983

SURFACE LOCATION (E)
1982' FNL 223' FEL
SECTION 3, T23N, R8W
LAT: 36.258099°N
LONG: 107.660301°W
DATUM: NAD1927

LAT: 36.258111°N
LONG: 107.660911°W
DATUM: NAD1983

S89°47'16"W 800'

S89°47'16"W 5045.8'

S89°47'16"W 1500'

N21°16'06"E 723.7'

¹⁷ OPERATOR CERTIFICATION

I hereby certify that the information contained herein is true and complete to the best of my knowledge and belief, and that this organization either owns a working interest or unleased mineral interest in the land including the proposed bottom-hole location or has a right to drill this well at this location pursuant to a contract with an owner of such a mineral or working interest, or to a voluntary pooling agreement or a compulsory pooling order heretofore entered by the division.

Signature: *Tamra Sessions* Date: 8/28/19

Printed Name: Tamra Sessions

tsessions@logosresourcesllc.com

E-mail Address

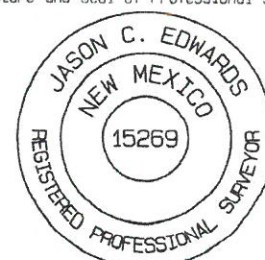
¹⁸ SURVEYOR CERTIFICATION

I hereby certify that the well location shown on this plat was plotted from field notes of actual surveys made by me or under my supervision, and that the same is true and correct to the best of my belief.

Date Revised: AUGUST 28, 2019

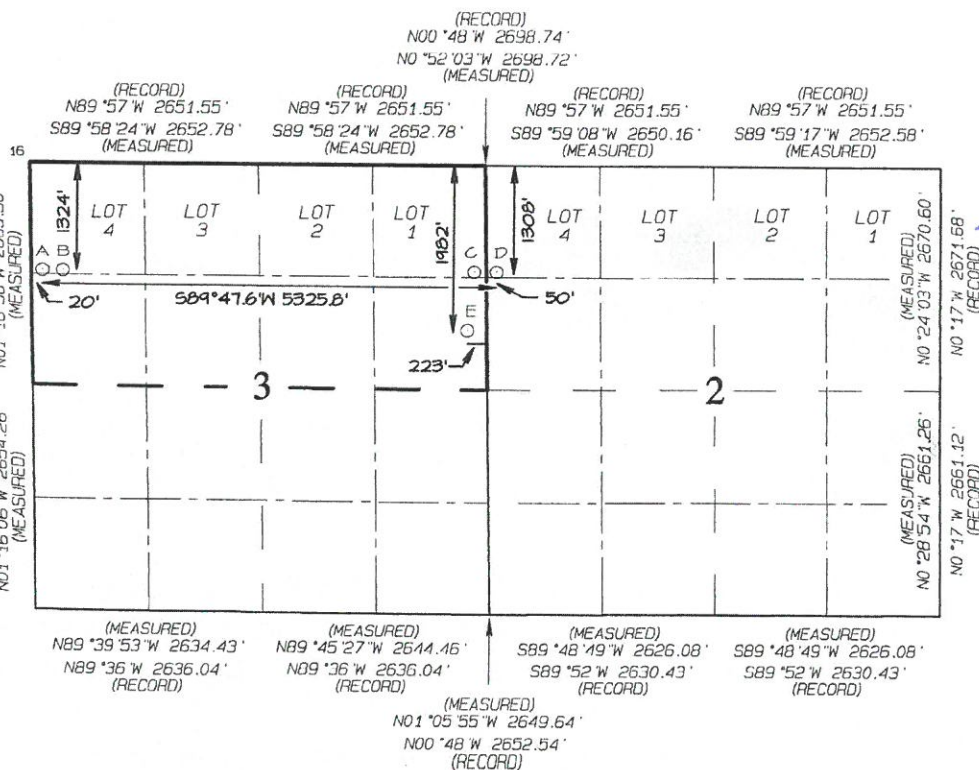
Date of Survey: MAY 4, 2019

Signature and Seal of Professional Surveyor



JASON C. EDWARDS

Certificate Number 15269



NO ALLOWABLE WILL BE ASSIGNED TO THIS COMPLETION
UNTIL ALL INTERESTS HAVE BEEN CONSOLIDATED OR A
NON-STANDARD UNIT HAS BEEN APPROVED BY THE DIVISION

District I
1625 N. French Drive, Hobbs, NM 88240
Phone: (575) 393-6161 Fax: (575) 393-0720

District II
811 S. First Street, Artesia, NM 88210
Phone: (575) 748-1283 Fax: (575) 748-9720

District III
1000 Rio Brazos Road, Aztec, NM 87410
Phone: (505) 334-6178 Fax: (505) 334-6170

District IV
1220 S. St. Francis Drive, Santa Fe, NM 87505
Phone: (505) 476-3460 Fax: (505) 476-3462

State of New Mexico
Energy, Minerals & Natural Resources Department

Form C-102
Revised August 1, 2011

Submit one copy to
Appropriate District Office

OIL CONSERVATION DIVISION
1220 South St. Francis Drive
Santa Fe, NM 87505

☒ AMENDED REPORT

17 OPERATOR CERTIFICATION

I hereby certify that the information contained herein is true and complete to the best of my knowledge and belief, and that this organization either owns a working interest or unless mineral interest in the land including the proposed bottom-hole location or has a right to drill this well at this location pursuant to a contract with an owner of such a mineral or working interest, or to a voluntary pooling agreement or a compulsory pooling order heretofore entered by the division.

Tamra Sessions 1/28/20

Signature Date

Tamra Sessions

Printed Name

tsessions@logosresourcesllc.com

E-mail Address

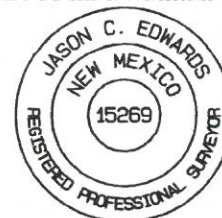
18 SURVEYOR CERTIFICATION

I hereby certify that the well location shown on this plat was plotted from field notes of actual surveys made by me or under my supervision, and that the same is true and correct to the best of my belief.

Date Revised: JANUARY 27, 2020

Date of Survey: MAY 4, 2019

Signature and Seal of Professional Surveyor



JASON C. EDWARDS

Certificate Number 15269

WELL LOCATION AND ACREAGE DEDICATION PLAT

1 API Number 30-045-38179	2 Pool Code 97232	3 Pool Name BASIN MANCOS
4 Property Code 327184	5 Property Name ZEUS 2308 03	6 Well Number 4H
7 ORGID No. 289408	8 Operator Name LOGOS OPERATING, LLC	9 Elevation 6908'

10 Surface Location

UL or lot no.	Section	Township	Range	Lot Idn	Feet from the	North/South line	Feet from the	East/West line	County
H	3	23N	8W		1938	NORTH	223	EAST	SAN JUAN

11 Bottom Hole Location If Different From Surface

UL or lot no.	Section	Township	Range	Lot Idn	Feet from the	North/South line	Feet from the	East/West line	County
D	1	23N	8W	4	755	NORTH	1100	WEST	SAN JUAN

12 Dedicated Acres 403.72	13 W/2 NW/4 - Section 1 N/2 - Section 2	14 Joint or Infill	15 Consolidation Code	16 Order No.
------------------------------	--	--------------------	-----------------------	--------------

NO ALLOWABLE WILL BE ASSIGNED TO THIS COMPLETION UNTIL ALL INTERESTS HAVE BEEN CONSOLIDATED OR A NON-STANDARD UNIT HAS BEEN APPROVED BY THE DIVISION

SURFACE LOCATION (A)
1938' FNL 223' FEL
SECTION 3, T23N, R8W
LAT: 36.258220° N
LONG: 107.660305° W
DATUM: NAD1927

NOT 20.6° E 1145.8'

POINT-OF-ENTRY (B)
753' FNL 50' FEL
SECTION 3, T23N, R8W
LAT: 36.261476° N
LONG: 107.659770° W
DATUM: NAD1927

NOT 54.2° E 150.0'

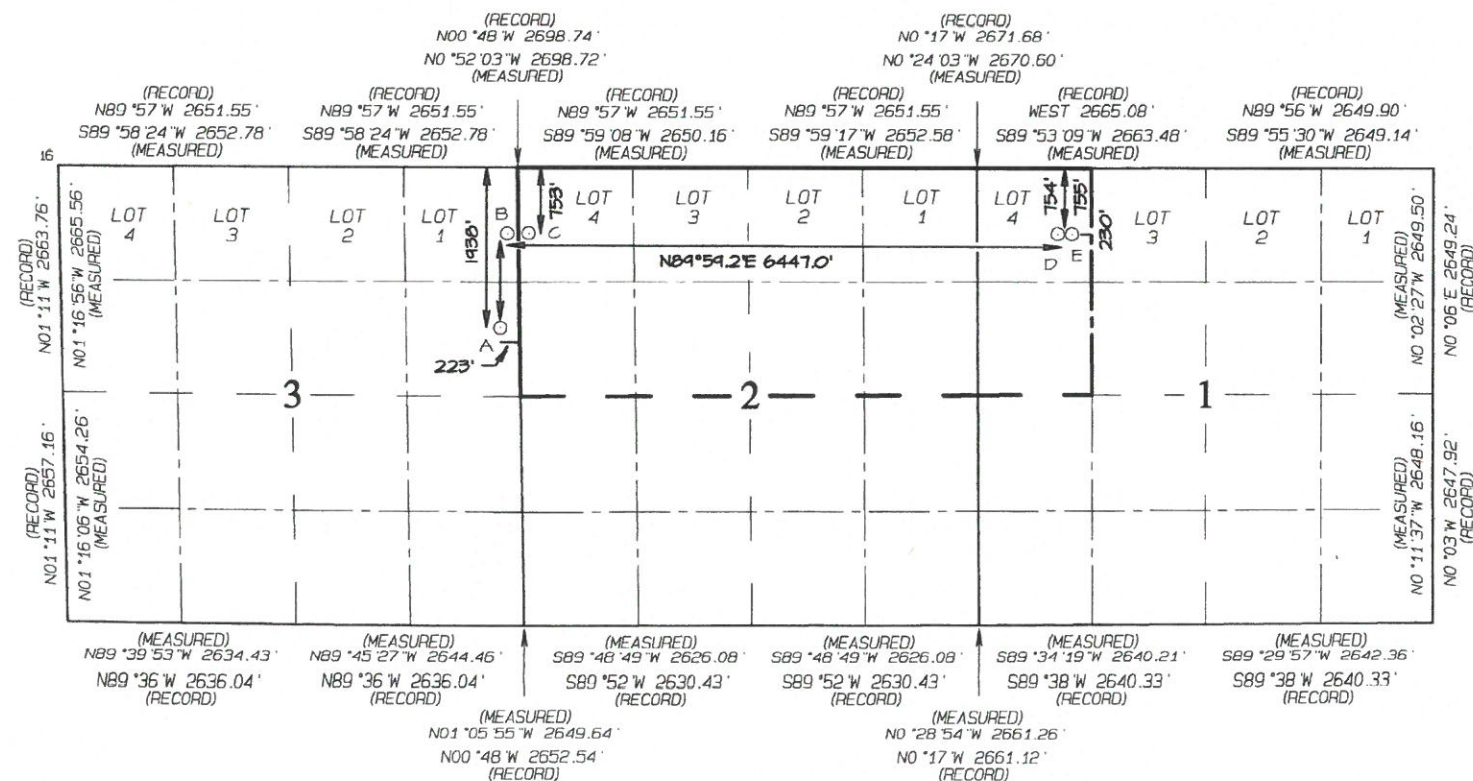
LAST PERFORATION (C)
753' FNL 100' FWL
SECTION 2, T23N, R8W
LAT: 36.261475° N
LONG: 107.659262° W
DATUM: NAD1927

NOT 54.2° E 6147.0'

FIRST PERFORATION (D)
754' FNL 1000' FWL
SECTION 1, T23N, R8W
LAT: 36.261447° N
LONG: 107.638242° W
DATUM: NAD1927

NOT 54.2° E 100.0'

END-OF-LATERAL (E)
755' FNL 1100' FWL
SECTION 1, T23N, R8W
LAT: 36.261446° N
LONG: 107.637903° W
DATUM: NAD1927



Submit one copy to
Appropriate District Office

District II
811 S. First Street, Artesia, NM 88210
Phone: (575) 748-1283 Fax: (575) 748-9720

District III
1000 Rio Brazos Road, Aztec, NM 87410
Phone: (505) 334-6178 Fax: (505) 334-6170

District IV
1220 S. St. Francis Drive, Santa Fe, NM 87505
Phone: (505) 476-3460 Fax: (505) 476-3462

OIL CONSERVATION DIVISION

1220 South St. Francis Drive
Santa Fe, NM 87505

☐ AMENDED REPORT

WELL LOCATION AND ACREAGE DEDICATION PLAT

¹ API Number 30-045-38180	² Pool Code 97232	³ Pool Name BASIN MANCOS
⁴ Property Code 327185	⁵ Property Name OMEGA 2308 03	⁶ Well Number 5H
⁷ GRID No. 289408	⁸ Operator Name LOGOS OPERATING, LLC	⁹ Elevation 6908'

¹⁰ Surface Location

UL or lot no.	Section	Township	Range	Lot Idn	Feet from the	North/South line	Feet from the	East/West line	County
H	3	23N	8W		1960	NORTH	223	EAST	SAN JUAN

¹¹ Bottom Hole Location If Different From Surface

UL or lot no.	Section	Township	Range	Lot Idn	Feet from the	North/South line	Feet from the	East/West line	County
E	1	23N	8W		1878	NORTH	1098	WEST	SAN JUAN
¹² Dedicated Acres 403.72					W/2 NW/4 - Section 1 N/2 - Section 2		¹³ Joint or Infill	¹⁴ Consolidation Code	¹⁵ Order No.

NO ALLOWABLE WILL BE ASSIGNED TO THIS COMPLETION UNTIL ALL INTERESTS HAVE
BEEN CONSOLIDATED OR A NON-STANDARD UNIT HAS BEEN APPROVED BY THE DIVISION

17 OPERATOR CERT. **Page 24 of 28**

I hereby certify that the information contained herein is true and complete to the best of my knowledge and belief, and that this organization either owns a working interest or an unleased mineral interest in the land including the proposed bottom-hole location or has a right to drill this well at this location pursuant to a contract with an owner of such a mineral or working interest, or to a voluntary pooling agreement or a compulsory pooling order heretofore entered by the division.

Tamra Sessions

1/28/20

Signature Date

Tamra Sessions

Printed Name
tsessions@logosresourcesllc.com

E-mail Address

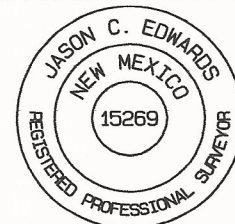
¹⁸ SURVEYOR CERTIFICATION

I hereby certify that the well location shown on this plat was plotted from field notes of actual surveys made by me or under my supervision, and that the same is true and correct to the best of my belief.

Date Revised: JANUARY 27, 2020

Date of Survey: MAY 4, 2019

Signature and Seal of Professional Surveyor



JASON C. EDWARDS

Certificate Number 15269

SURFACE LOCATION (A)
1960' FNL 223' FEL
SECTION 3, T23N, R8W
LAT: 36.258159°N
LONG: 107.660303°W
DATUM: NAD1927

LAT: 36.258172°N
LONG: 107.660913°W
DATUM: NAD1983

NT3°44.9'E 179.5'

POINT-OF-ENTRY (B)
1910' FNL 50' FEL
SECTION 3, T23N, R8W
LAT: 36.258296°N
LONG: 107.659718°W
DATUM: NAD1927

LAT: 36.258308°N
LONG: 107.660329°W
DATUM: NAD1983

N89°41.1'E 150.0'

LAST PERFORATION (C)
1909' FNL 100' FWL
SECTION 2, T23N, R8W
LAT: 36.258297°N
LONG: 107.659209°W
DATUM: NAD1927

LAT: 36.258310°N
LONG: 107.659820°W
DATUM: NAD1983

N89°41.1'E 6105.4'

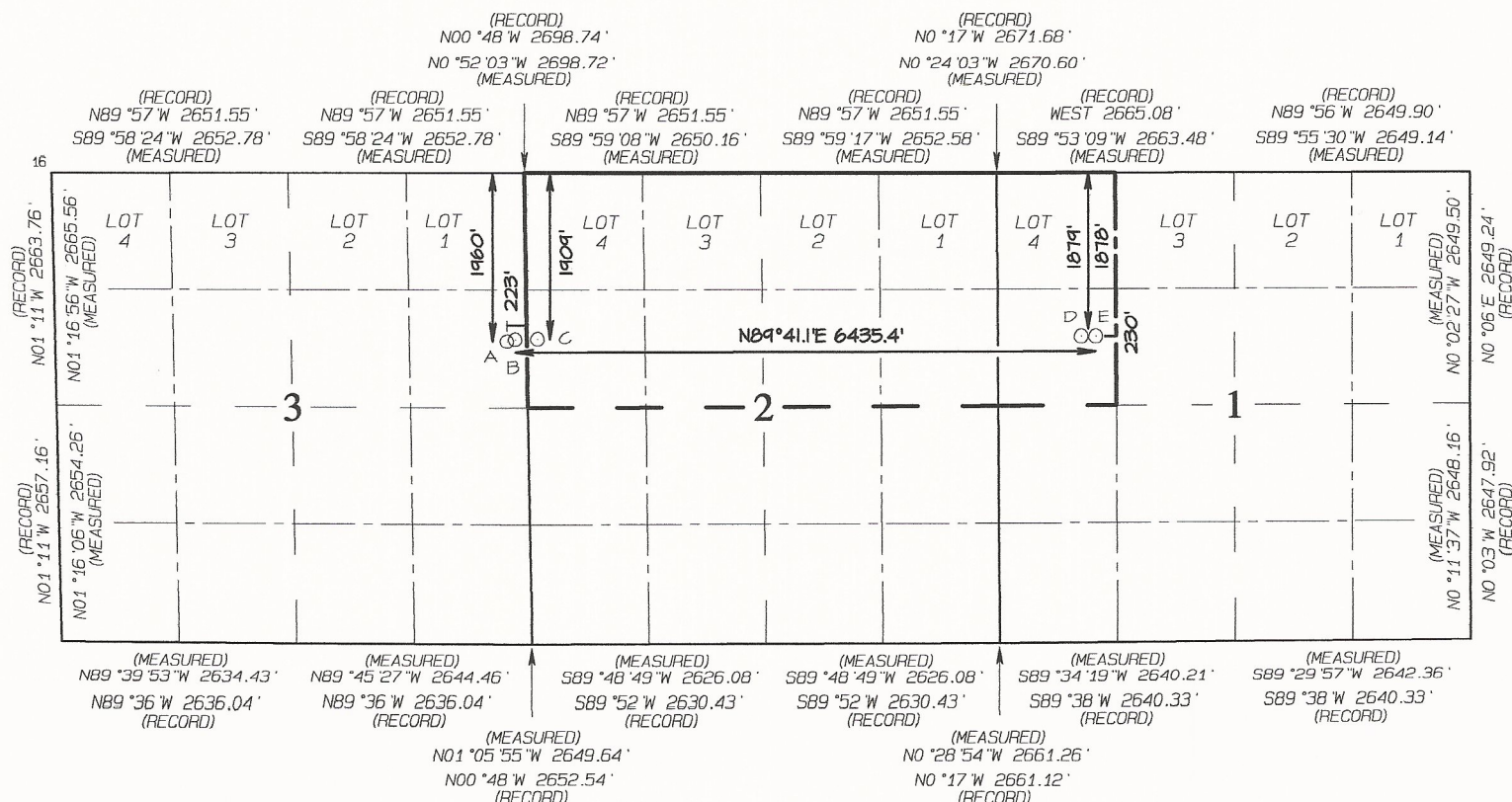
FIRST PERFORATION (D)
1879' FNL 998' FWL
SECTION 1, T23N, R8W
LAT: 36.258358°N
LONG: 107.638230°W
DATUM: NAD1927

LAT: 36.258371°N
LONG: 107.638840°W
DATUM: NAD1983

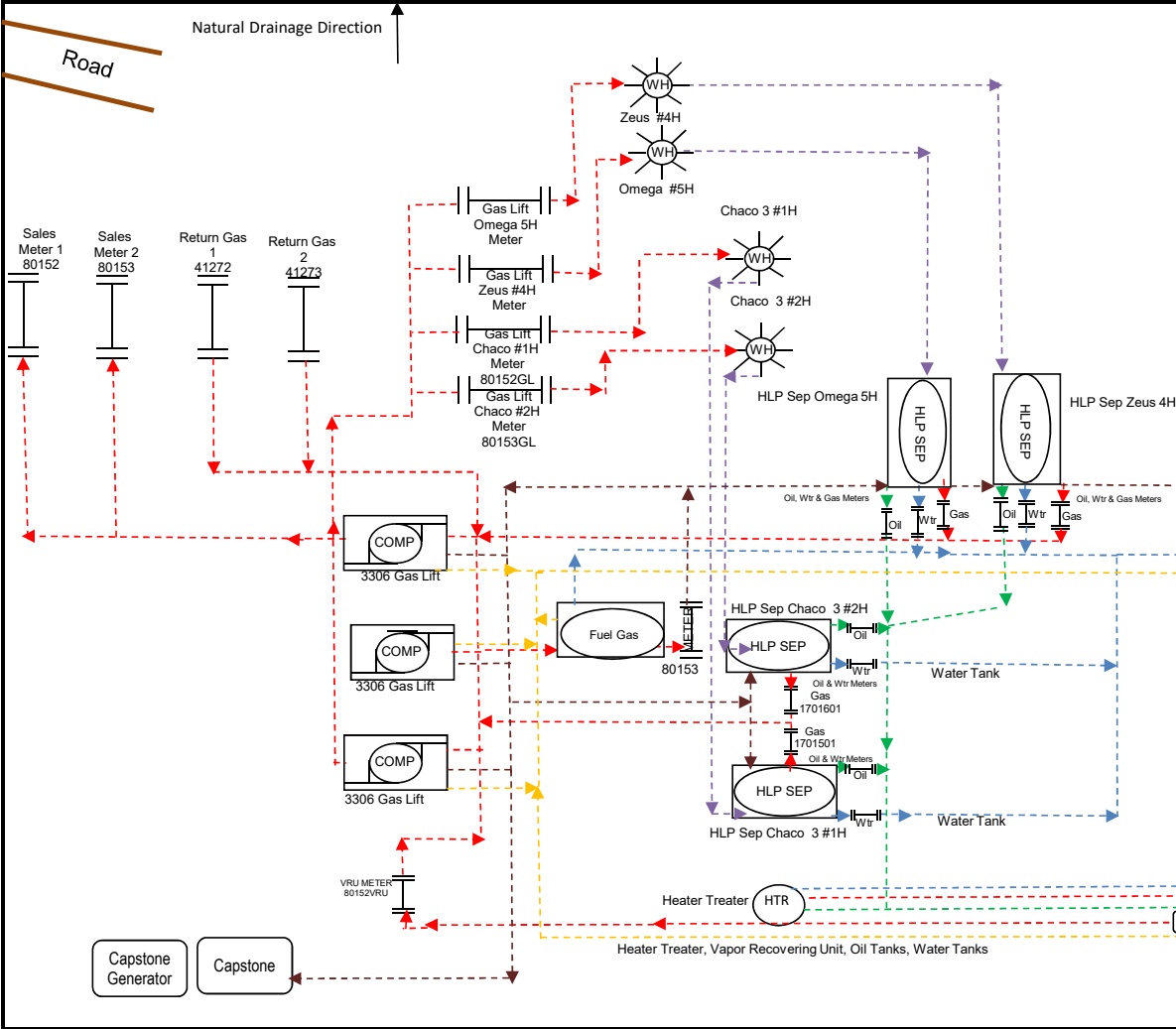
N89°41.1'E 100.0'

END-OF-LATERAL (E)
1878' FNL 1098' FWL
SECTION 1, T23N, R8W
LAT: 36.258359°N
LONG: 107.637891°W
DATUM: NAD1927

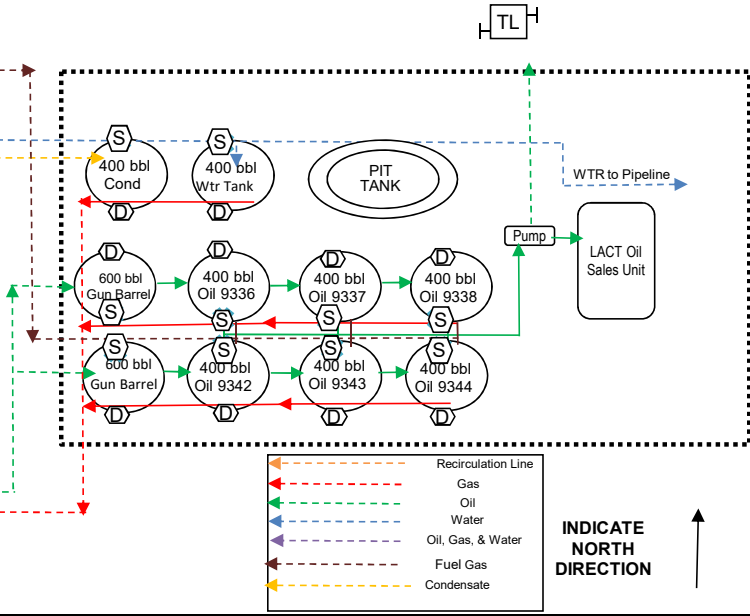
LAT: 36.258372°N
LONG: 107.638501°W
DATUM: NAD1983



LOGOS OPERATING, LLC - SITE DIAGRAM					
Operator: Tyler Smith			DATE: 04/19/21		
WELL / SITE NAME:	Chaco 23 08 03 #001H	LEGAL DESCR (U-S-T-R):	UL H, SEC 03, T23N, R08W		
API No.:	30-045-35647	PRODUCING ZONE(S):	Mancos		
LEASE No.:	NMNM-18463	LATITUDE:	36.258023	LONGITUDE:	107.660784
FOOTAGES:	2013' FNL & 186' FEL	COUNTY:	San Juan	STATE:	NM



LOGOS OPERATING, LLC - SITE DIAGRAM					
			DATE: 04/19/21		
WELL / SITE NAME:	Chaco 23 08 03 #002H	LEGAL DESCR (U-S-T-R):	UL H, SEC 03, T23N, R08W		
API No.:	30-045-35646	PRODUCING ZONE(S):	Mancos		
LEASE No.:	NMNM-18463	LATITUDE:	36.2579	LONGITUDE:	107.660785
FOOTAGES:	2057' FNL & 187' FEL	COUNTY:	San Juan	STATE:	NM
WELL / SITE NAME:	Zeus 2308 03 #004H	LEGAL DESCR (U-S-T-R):	UL H, SEC 03, T23N, R08W		
API No.:	30-045-38179	PRODUCING ZONE(S):	Mancos		
LEASE No.:	NMNM-120374 / CA NMNM-141953	LATITUDE:	36.258232	LONGITUDE:	107.660916
FOOTAGES:	1938' FNL & 223' FEL	COUNTY:	San Juan	STATE:	NM
WELL / SITE NAME:	Omega 2308 03 #005H	LEGAL DESCR (U-S-T-R):	UL H, SEC 03, T23N, R08W		
API No.:	30-045-38180	PRODUCING ZONE(S):	Mancos		
LEASE No.:	NMNM-120374 / CA NMNM-141953	LATITUDE:	36.258172	LONGITUDE:	107.660913
FOOTAGES:	1960' FNL & 223' FEL	COUNTY:	San Juan	STATE:	NM



Tamra Sessions

From: Jude Dysart <jude.dysart@whiptailmidstream.com>
Sent: Monday, April 19, 2021 12:42 PM
To: Tamra Sessions; Andy Pickle; Ernie Johnson
Cc: Kelly Maxwell; Marie Florez; Etta Trujillo
Subject: RE: C-106 Letter from Transporter: LOGOS Omega Pad

Tamra,

We approve the use of the Pipeline Transfer LACT equipment on the Chaco-Zeus-Omega 2308 03 well pad to transfer product from the wells below to Whiptail Midstream, LLC's pipeline system.

- Chaco 23 08 03 1H / API #30-045-35647 / UNIT H (SE/NE) Sec. 3, T23N, R8W, NMPPM
- Chaco 23 08 03 2H / API #30-045-35646 / UNIT H (SE/NE) Sec. 3, T23N, R8W, NMPPM
- Chaco 23 08 03 3H / API #30-045-38171 / UNIT H (SE/NE) Sec. 3, T23N, R8W, NMPPM (to be drilled at a later date)
- Zeus 2308 03 4H / API #30-045-38179 / UNIT H (SE/NE) Sec. 3, T23N, R8W, NMPPM
- Omega 2308 03 5H / API #30-045-38180 / UNIT H (SE/NE) Sec. 3, T23N, R8W, NMPPM

Jude Dysart
 VP – Engineering & Technical Services
Whiptail Midstream
 15 W. 6th Street, Suite 2901, Tulsa, OK 74119
 O: 918.289.2145, M: 405.834.9402
Jude.Dysart@WhiptailMidstream.com



From receipt to delivery, the midstream partner you count on.

From: Tamra Sessions <tsessions@logosresourcesllc.com>
Sent: Monday, April 19, 2021 12:58 PM
To: Jude Dysart <jude.dysart@whiptailmidstream.com>; Andy Pickle <andy.pickle@whiptailmidstream.com>; Ernie Johnson <ernie.johnson@whiptailmidstream.com>
Cc: Kelly Maxwell <kmaxwell@logosresourcesllc.com>; Marie Florez <mflorez@logosresourcesllc.com>; Etta Trujillo <etrujillo@logosresourcesllc.com>
Subject: C-106 Letter from Transporter: LOGOS Omega Pad

Good afternoon Jude,

LOGOS is working on the C-106 Letter from Transporter submittal to NMOCD for Chaco-Zeus-Omega 2308 03 well pad. Please reply back to this email with your approval.

LOGOS Operating, LLC is requesting approval from the transporter to utilize Pipeline Transfer LACT equipment on the Chaco-Zeus-Omega 2308 03 well pad. Product from the below listed wells would be

produced through the LACT equipment into Whiptail Midstream, LLC's (transporter) pipeline system. Whiptail Midstream, LLC will be responsible for transporting LOGOS Operating, LLC's product to sales.

OMEGA 2308 03 PIPELINE LACT UNIT

WELLS TO BE SERVED BY PIPELINE LACT UNIT:

- Chaco 23 08 03 1H / API #30-045-35647 / UNIT H (SE/NE) Sec. 3, T23N, R8W, NMPPM
- Chaco 23 08 03 2H / API #30-045-35646 / UNIT H (SE/NE) Sec. 3, T23N, R8W, NMPPM
- Chaco 23 08 03 3H / API #30-045-38171 / UNIT H (SE/NE) Sec. 3, T23N, R8W, NMPPM (to be drilled at a later date)
- Zeus 2308 03 4H / API #30-045-38179 / UNIT H (SE/NE) Sec. 3, T23N, R8W, NMPPM
- Omega 2308 03 5H / API #30-045-38180 / UNIT H (SE/NE) Sec. 3, T23N, R8W, NMPPM

Tamra Sessions

Regulatory Specialist

Office 505-324-4145

tsessions@logosresourcesllc.com



District I
1625 N. French Dr., Hobbs, NM 88240
Phone:(575) 393-6161 Fax:(575) 393-0720
District II
811 S. First St., Artesia, NM 88210
Phone:(575) 748-1283 Fax:(575) 748-9720
District III
1000 Rio Brazos Rd., Aztec, NM 87410
Phone:(505) 334-6178 Fax:(505) 334-6170
District IV
1220 S. St Francis Dr., Santa Fe, NM 87505
Phone:(505) 476-3470 Fax:(505) 476-3462

State of New Mexico
Energy, Minerals and Natural Resources
Oil Conservation Division
1220 S. St Francis Dr.
Santa Fe, NM 87505

CONDITIONS

Action 24873

CONDITIONS OF APPROVAL

Operator:				OGRID:	Action Number:	Action Type:
LOGOS OPERATING, LLC	2010 Afton Place	Farmington, NM87401		289408	24873	C-106
OCD Reviewer	Condition					
dmcclure	None					