

<b>Well Name:</b> HACKEY SACK BHV FEDERAL COM	<b>Well Location:</b> T14S / R27E / SEC 4 / NWNW /	<b>County or Parish/State:</b> CHAVES / NM
<b>Well Number:</b> 1	<b>Type of Well:</b> CONVENTIONAL GAS WELL	<b>Allottee or Tribe Name:</b>
<b>Lease Number:</b> NMNM96048	<b>Unit or CA Name:</b> 1 HACKEY SACK BHV FED COM	<b>Unit or CA Number:</b> NMNM114008
<b>US Well Number:</b> 300056379800S1	<b>Well Status:</b> Producing Gas Well	<b>Operator:</b> EOG RESOURCES INCORPORATED

Accepted for record – NMOCD gc 6/10/2021

Notice of Intent

<b>Type of Submission:</b> Notice of Intent	<b>Type of Action</b> Plug and Abandonment
<b>Date Sundry Submitted:</b> 06/02/2021	<b>Time Sundry Submitted:</b> 10:53
<b>Date proposed operation will begin:</b> 06/07/2021	
<b>Procedure Description:</b> Please see attached.	

Surface Disturbance

**Is any additional surface disturbance proposed?:** No

NOI Attachments

**Procedure Description**

Hackey\_Sack\_BHV\_Federal\_Com\_1\_6\_2\_21\_20210602105352.pdf

Conditions of Approval

**Specialist Review**

Conditions\_of\_Approval\_20210609081318.pdf

General\_Conditions\_of\_Approval\_20210609081317.pdf

<b>Well Name:</b> HACKEY SACK BHV FEDERAL COM	<b>Well Location:</b> T14S / R27E / SEC 4 / NWNW /	<b>County or Parish/State:</b> CHAVES / NM
<b>Well Number:</b> 1	<b>Type of Well:</b> CONVENTIONAL GAS WELL	<b>Allottee or Tribe Name:</b>
<b>Lease Number:</b> NMNM96048	<b>Unit or CA Name:</b> 1 HACKEY SACK BHV FED COM	<b>Unit or CA Number:</b> NMNM114008
<b>US Well Number:</b> 300056379800S1	<b>Well Status:</b> Producing Gas Well	<b>Operator:</b> EOG RESOURCES INCORPORATED

Operator Certification

I certify that the foregoing is true and correct. Title 18 U.S.C. Section 1001 and Title 43 U.S.C. Section 1212, make it a crime for any person knowingly and willfully to make to any department or agency of the United States any false, fictitious or fraudulent statements or representations as to any matter within its jurisdiction. Electronic submission of Sundry Notices through this system satisfies regulations requiring a submission of Form 3160-5 or a Sundry Notice.

**Operator Electronic Signature:** TINA HUERTA  
**Signed on:** JUN 02, 2021 10:53 AM  
**Name:** EOG Y RESOURCES INCORPORATED  
**Title:** Regulatory Specialist  
**Street Address:** 104 SOUTH FOURTH STREET  
**City:** Artesia **State:** NM  
**Phone:** (575) 748-4168  
**Email address:** tina\_huerta@eogresources.com

Field Representative

**Representative Name:**  
**Street Address:**  
**City:** **State:** **Zip:**  
**Phone:**  
**Email address:**

BLM Point of Contact

**BLM POC Name:** JENNIFER SANCHEZ  
**BLM POC Title:** Petroleum Engineer  
**BLM POC Phone:** 5756270237  
**BLM POC Email Address:** j1sanchez@blm.gov  
**Disposition:** Approved  
**Disposition Date:** 06/09/2021  
**Signature:** Jennifer Sanchez

EOG Resources, Inc. plans to plug and abandon this well as follows:

1. MIRU all safety equipment as needed. NU BOP. POOH with production equipment.
2. Spot a 54 sx Class C cement plug from 6946 ft – 7265 ft. This will cover Chester, Morrow and Atoka tops.
3. Spot a 41 sx Class C cement plug from 6657 ft – 6900 ft. This will cover Strawn and Lower Canyon tops.
4. Spot a 55 sx Class C cement plug from 6034 ft – 6360 ft. This will cover Cisco and Spear tops.
5. Set a CIBP at 5566 ft. Spot a 17 sx Class C cement plug from 5466 ft - 5566 ft. This will cover Wolfcamp and Wolfcamp B perms.
6. Spot a 25 sx Class C cement plug from 4585 ft – 4735 ft. This will cover Abo top.
7. Spot a 25 sx Class C cement plug from 3791 ft – 3941 ft. This will cover Tubb top.
8. Spot a 37 sx Class C cement plug from 2284 ft – 2503 ft. This will cover Yeso and Glorieta top.
9. Perforate at 1581 ft. Spot a 25 sx Class C cement plug from 1431 ft – 1581 ft. WOC and tag. This will cover Intermediate casing shoe.
10. Spot a 25 sx Class C cement plug from 1009 ft – 1159 ft. This will cover San Andres top.
11. Spot a 25 sx Class C cement plug from 727 ft – 877 ft. This will cover Grayburg top.
12. Perforate at 634 ft. Spot an 87 sx Class C cement plug from 380 ft – 634 ft. This will cover Queen and Penrose tops.
13. Perforate at 150 ft. Spot a 25 sx Class C cement plug from 150 ft up to surface. WOC and tag. Backfill as needed.
14. Cut off wellhead and install dry hole marker. Clean location as per regulated.

Wellbore schematics attached

# Hackey Sack BHV Fed Com 1 Current

Sec-TWN-RNG: Sec. 4-14S-27E  
FOOTAGES: 990 FNL & 660 FWL

API: 30-005-63798  
GL: 3421  
KB: 3435

## CASING DETAIL

#	HOLE SIZE	SIZE	WGHT	GRADE	Top	Bottom	Sx Cmt	Circ/TOC	TOC Method
A	17 1/2	13 3/8	48	H-40	0	430	1400	Surface	
B	12 1/4	9 5/8	36	J-55	0	1,506	750	Surface	
C	8 3/4	7	23,26	J-55	0	7,480	1450	Surface	Compl. Rpt

## FORMATION TOPS

	Formation	Top		Formation	Top
	Queen	483		Cisco	6310
	Penrose	584		Lower Canyon	6707
	Grayburg	802		Strawn	6850
	San Andres	1084		Atoka	6996
	Glorieta	2334		Morrow	7073
	Yeso	2453		Chester	7210
	Tubb	3866		Lower Mississippian	7340
	Abo	4660			
	Wolfcamp	5608			
	Wolfcamp B	5734			
	Spear	6084			

## TUBING DETAIL

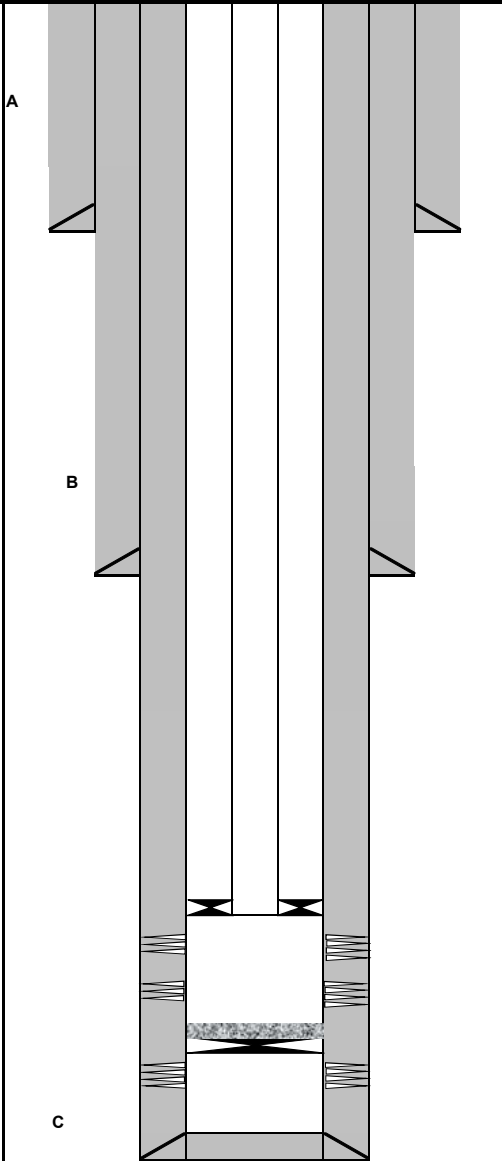
#	Joints	Description	Length	OD	ID	Grade	Wt (lb/ft)	Top (ftKB)	Btm (ftKB)
		2-7/8" Tubing							5530

Packer depth @ 5530

CIBP @ 7300 w/35' cement on top

## Perforation Detail

	Formation	Top	Bottom	Treatment
A	Lr Mississippian	7,340	7,376	Acidized with 4500g 20% IC acid and 130 balls
B	Wolfcamp	5,616	5,674	Acidized with 2000g 20% IC acid and 80 balls
C	Wolfcamp B	5,768	5,832	Acidized with 4000g 20% IC acid and 250 balls



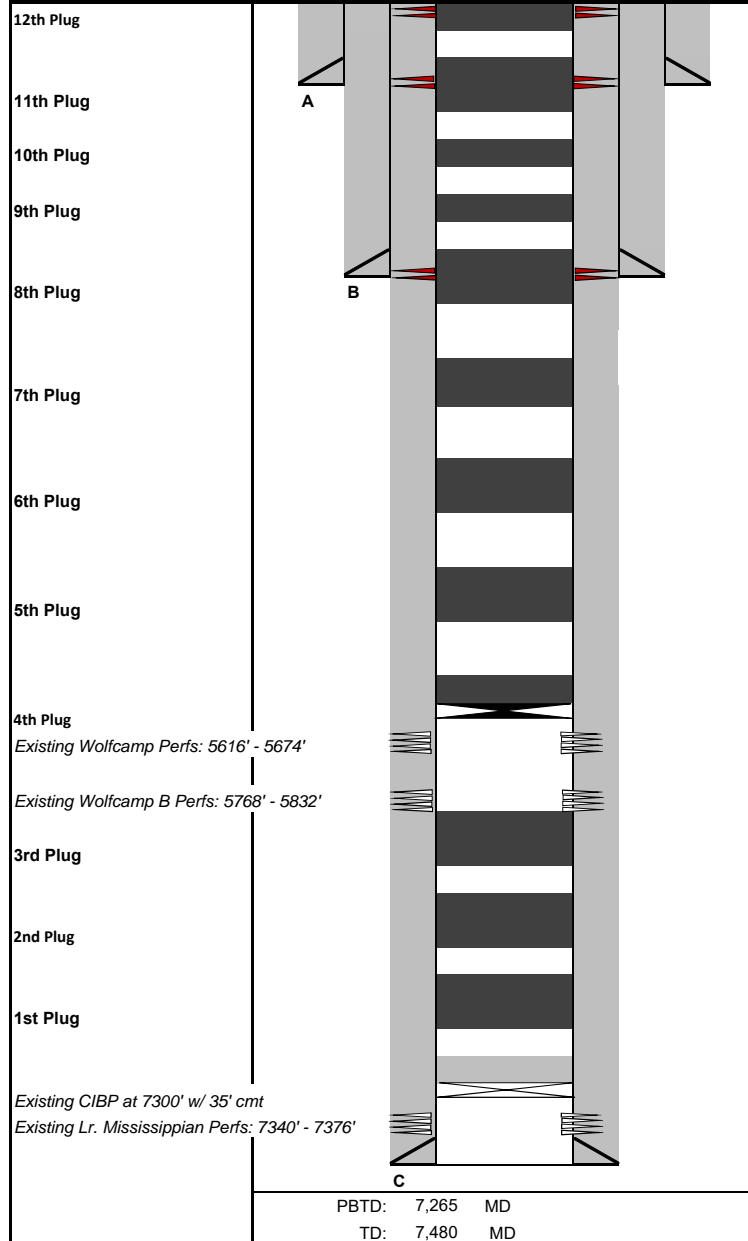
PBTD: 7,300 MD  
TD: 7,480 MD

SRP 3/8/21

Perf C  
Perf B

Perf A

# Hackey Sack BHV Fed Com 1 Proposed



Sec-TWN-RNG:  
FOOTAGES:

Sec. 4-14S-27E  
990 FNL & 660 FWL

API: 30-005-63798  
GL: 3421  
KB: 3435

## CASING DETAIL

#	HOLE SIZE	SIZE	WGHT	GRADE	Top	Bottom	Sx Cmt	Circ/TOC	TOC Method
A	17 1/2	13 3/8	48	H-40	0	430	1400	Surface	1"
B	12 1/4	9 5/8	36	J-55	0	1,506	750	Circ	
C	8 3/4	7	23,26	J-55	0	7,480	1450	Circ	

## FORMATION TOPS

	Formation	Top	Formation	Top	Formation	Top	Formation	Top
	Queen	483	Yeso	2453	Spear	6084	Morrow	7073
	Penrose	584	Tubb	3866	Cisco	6310	Chester	7210
	Grayburg	802	Abo	4660	Lower Canyon	6707	Lower Mississippian	7340
	San Andres	1084	Wolfcamp	5608	Strawn	6850		
	Glorieta	2334	Wolfcamp B	5734	Atoka	6996		

## TUBING DETAIL

#	Joints	Description	Length	OD	ID	Grade	Wt (lb/ft):	Top (ftKB):	Btm (ftKB):
		2-7/8" Tubing							5530

## PLUGS

#	SX	Class	Top	Bottom	Δ	Notes	Tag
1	54	C	6946	7265	319	Chester, Morrow & Atoka Tops	N
2	41	C	6657	6900	243	Strawn & Lower Canyon Tops	N
3	55	C	6034	6360	326	Cisco & Spear Tops	N
4	17	C	5466	5566	100	Wolfcamp & Wolfcamp B Perfs	N
5	25	C	4585	4735	150	Abo Top	N
6	25	C	3791	3941	150	Tubb Top	N
7	37	C	2284	2503	219	Yeso & Glorieta Top	N
8	25	C	1431	1581	150	Int. Csg. Shoe	Y
9	25	C	1009	1159	150	San Andres Top	N
10	25	C	727	877	150	Grayburg Top	N
11	87	C	380	634	254	Queen & Penrose Tops	N
12	25	C	0	150	150	Surface Plug	Y

## PERFORATION DETAIL

	Formation	Top	Bottom		Formation	Top	Bottom		
	Lr Mississippian	7,340	7,376		Wolfcamp B	5,768	5,832		
	Wolfcamp	5,616	5,674						

## ADDITIONAL DETAIL

Prepared by: KJP

**Hackey Sack BHV Fed Com 1  
30-005-63798  
EOG Resources Incorporated  
June 9, 2021  
Conditions of Approval**

- 1. Operator shall place a balanced Class C cement plug from 7,265'-6,946' to seal the top of the Morrow as proposed.**
- 2. Operator shall place a balanced Class C cement plug from 6,900'-6,657' as proposed.**
- 3. Operator shall place a balanced Class C cement plug from 6,360'-6,034' as proposed.**
- 4. Operator shall place CIBP at 5,566' (50'-100' above top most perf) and places 25 sx of Class C cement on top. WOC and TAG.**
- 5. Operator shall place a balanced Class C cement plug from 4,735'-4,585' to seal the top of the Abo as proposed.**
- 6. Operator shall place a balanced Class C cement plug from 3,941'-3,791' as proposed.**
- 7. Operator shall place a balanced Class C cement plug from 2,453'-2,234' to seal the Glorietta as proposed.**
- 8. Operator shall perf and squeeze at 1,556'. Operator shall place a balanced Class C cement plug from 1,556' to 1,456' seal the 9-5/8" casing shoe. WOC and TAG.**
- 9. Operator shall place a balanced Class C cement plug from 1,159'-1,009' as proposed.**
- 10. Operator shall place a balanced Class C cement plug from 877'-727' as proposed.**
- 11. Operator shall perf and squeeze at 480'. Operator shall place a balanced Class C cement plug from 480'-380' to seal the 13-3/8" shoe. WOC and TAG.**
- 12. Operator shall perf and squeeze at 250'. Operator shall place a balanced Class C cement plug from 250'-surface to seal the Yates Formation. WOC and TAG.**

**13. See Attached for general plugging stipulations.**

**JAM 06092021**

**BUREAU OF LAND MANAGEMENT**  
**Roswell Field Office**  
**2909 W. Second Street**  
**Roswell, New Mexico 88201**  
**575-627-0272**

**General Requirements for Plug Backs**

Failure to comply with the following Conditions of Approval may result in a Notice of Incidents of Noncompliance (INC) in accordance with 43 CFR 3163.1.

1. Plugging operations shall commence within **ninety (90)** days from this approval.

**If you are unable to plug back the well by the 90<sup>th</sup> day provide this office, prior to the 90<sup>th</sup> day, with the reason for not meeting the deadline and a date when we can expect the well to be plugged back. Failure to do so will result in enforcement action.**

2. **Notification:** Contact the appropriate BLM office at least 24 hours prior to the commencing of any plug back operations. Call 575-627-0205.

3. **Blowout Preventers:** A blowout preventer (BOP), as appropriate, shall be installed before commencing any plugging operation. The BOP must be installed and maintained as per API and manufacturer recommendations. The minimum BOP requirement is a 2M system for a well not deeper than 9,090 feet; a 3M system for a well not deeper than 13,636 feet; and a 5M system for a well not deeper than 22,727 feet.

4. **Mud Requirement:** Mud shall be placed between all plugs. Minimum consistency of plugging mud shall be obtained by mixing at the rate of 25 sacks (50 pounds each) of gel per 100 barrels of **brine** water. Minimum nine (9) pounds per gallon.

5. **Cement Requirement:** Sufficient cement shall be used to bring any required plug to the specified depth and length. Any given cement volumes on the proposed plugging procedure are merely estimates and are not final. Unless specific approval is received, no plug except the surface plug shall be less than 25 sacks of cement. Any plug that requires a tag will have a minimum WOC time of 4 hours.

In lieu of a cement plug across perforations in a cased hole (not for any other plugs), a bridge plug set within 50 feet to 100 feet above the perforations shall be capped with 25 sacks of cement.

**Before pumping cement on top of CIBP, tag will be required to verify depth. Based on depth, a tag of the cement may be deemed necessary.**

Unless otherwise specified in the approved procedure, the cement plug shall consist of either **Neat Class "C"**, for up to 7,500 feet of depth or **Neat Class "H"**, for deeper than 7,500 feet plugs.

6. **Subsequent Plug back Reporting:** Within 30 days after plug back work is completed, file one original and three copies of the Subsequent Report, Form 3160-5 to BLM. The report should give in detail the manner in which the plug back work was carried out, the extent (by depths) of cement plugs placed, and the size and location (by depths) of casing left in the well. **Show date work was completed.**

7. **Trash:** All trash, junk and other waste material shall be contained in trash cages or bins to prevent scattering and will be removed and deposited in an approved sanitary landfill. Burial on site is not permitted.



**District I**  
1625 N. French Dr., Hobbs, NM 88240  
Phone:(575) 393-6161 Fax:(575) 393-0720  
**District II**  
811 S. First St., Artesia, NM 88210  
Phone:(575) 748-1283 Fax:(575) 748-9720  
**District III**  
1000 Rio Brazos Rd., Aztec, NM 87410  
Phone:(505) 334-6178 Fax:(505) 334-6170  
**District IV**  
1220 S. St Francis Dr., Santa Fe, NM 87505  
Phone:(505) 476-3470 Fax:(505) 476-3462

State of New Mexico  
Energy, Minerals and Natural Resources  
Oil Conservation Division  
1220 S. St Francis Dr.  
Santa Fe, NM 87505

CONDITIONS  
  
Action 31140

CONDITIONS

Operator: EOG RESOURCES INC P.O. Box 2267 Midland, TX 79702	OGRID: 7377
	Action Number: 31140
	Action Type: [C-103] NOI Plug & Abandon (C-103F)

CONDITIONS

Created By	Condition	Condition Date
gcordero	None	6/11/2021