

Form 3160-3  
(June 2015)FORM APPROVED  
OMB No. 1004-0137  
Expires: January 31, 2018

UNITED STATES  
DEPARTMENT OF THE INTERIOR  
BUREAU OF LAND MANAGEMENT  
**APPLICATION FOR PERMIT TO DRILL OR REENTER**

1a. Type of work: <input type="checkbox"/> DRILL <input type="checkbox"/> REENTER 1b. Type of Well: <input type="checkbox"/> Oil Well <input type="checkbox"/> Gas Well <input type="checkbox"/> Other 1c. Type of Completion: <input type="checkbox"/> Hydraulic Fracturing <input type="checkbox"/> Single Zone <input type="checkbox"/> Multiple Zone		5. Lease Serial No.  6. If Indian, Allottee or Tribe Name  7. If Unit or CA Agreement, Name and No.  8. Lease Name and Well No.
2. Name of Operator		9. API Well No. <b>30 015 48590</b>
3a. Address	3b. Phone No. (include area code)	10. Field and Pool, or Exploratory
4. Location of Well (Report location clearly and in accordance with any State requirements. *) At surface At proposed prod. zone		11. Sec., T. R. M. or Blk. and Survey or Area
14. Distance in miles and direction from nearest town or post office*		12. County or Parish
13. State		
15. Distance from proposed* location to nearest property or lease line, ft. (Also to nearest drig. unit line, if any)	16. No of acres in lease	17. Spacing Unit dedicated to this well
18. Distance from proposed location* to nearest well, drilling, completed, applied for, on this lease, ft.	19. Proposed Depth	20. BLM/BIA Bond No. in file
21. Elevations (Show whether DF, KDB, RT, GL, etc.)	22. Approximate date work will start*	23. Estimated duration
24. Attachments		

The following, completed in accordance with the requirements of Onshore Oil and Gas Order No. 1, and the Hydraulic Fracturing rule per 43 CFR 3162.3-3 (as applicable)

- |   |   |
|---|---|
| 1. Well plat certified by a registered surveyor.<br>2. A Drilling Plan.<br>3. A Surface Use Plan (if the location is on National Forest System Lands, the SUPO must be filed with the appropriate Forest Service Office). | 4. Bond to cover the operations unless covered by an existing bond on file (see Item 20 above).<br>5. Operator certification.<br>6. Such other site specific information and/or plans as may be requested by the BLM. |
|---|---|

25. Signature	Name (Printed/Typed)	Date
Title		
Approved by (Signature)	Name (Printed/Typed)	Date
Title		
Office		

Application approval does not warrant or certify that the applicant holds legal or equitable title to those rights in the subject lease which would entitle the applicant to conduct operations thereon.  
 Conditions of approval, if any, are attached.

Title 18 U.S.C. Section 1001 and Title 43 U.S.C. Section 1212, make it a crime for any person knowingly and willfully to make to any department or agency of the United States any false, fictitious or fraudulent statements or representations as to any matter within its jurisdiction.



(Continued on page 2)

\*(Instructions on page 2)

## Additional Operator Remarks

### Location of Well

0. SHL: SWSE / 179 FSL / 2475 FEL / TWSP: 24S / RANGE: 30E / SECTION: 13 / LAT: 32.2109947 / LONG: -103.8331956 ( TVD: 0 feet, MD: 0 feet )

PPP: SESW / 3 FSL / 2454 FWL / TWSP: 24S / RANGE: 30E / SECTION: 1 / LAT: 32.239657 / LONG: -103.835026 ( TVD: 11062 feet, MD: 21482 feet )

PPP: NENW / 1324 FNL / 2439 FWL / TWSP: 24S / RANGE: 30E / SECTION: 13 / LAT: 32.221517 / LONG: -103.835037 ( TVD: 11062 feet, MD: 14883 feet )

PPP: SESW / 100 FSL / 2450 FWL / TWSP: 24S / RANGE: 30E / SECTION: 13 / LAT: 32.2107799 / LONG: -103.8456759 ( TVD: 11182 feet, MD: 11549 feet )

BHL: NENW / 50 FNL / 2450 FWL / TWSP: 24S / RANGE: 30E / SECTION: 1 / LAT: 32.2539944 / LONG: -103.8345266 ( TVD: 11062 feet, MD: 26744 feet )

### BLM Point of Contact

Name: TENILLE ORTIZ

Title: Legal Instruments Examiner

Phone: (575) 234-2224

Email: tortiz@blm.gov

## District I

1625 N. French Dr., Hobbs, NM 88240  
Phone: (575) 393-6161 Fax: (575) 393-0720

## District II

811 S. First St., Artesia, NM 88210  
Phone: (575) 748-1283 Fax: (575) 748-9720

## District III

1000 Rio Brazos Road, Aztec, NM 87410  
Phone: (505) 334-6178 Fax: (505) 334-6170

## District IV

1220 S. St. Francis Dr., Santa Fe, NM 87505  
Phone: (505) 476-3460 Fax: (505) 476-3462

## State of New Mexico

## Energy, Minerals &amp; Natural Resources Department

## OIL CONSERVATION DIVISION

1220 South St. Francis Dr.

Santa Fe, NM 87505

Form C-102

Revised August 1, 2011

Submit one copy to appropriate

District Office

☐ AMENDED REPORT

## WELL LOCATION AND ACREAGE DEDICATION PLAT

<sup>1</sup> API Number 30-015-	<sup>2</sup> Pool Code 98220	<sup>3</sup> Pool Name Purple Sage, Wolfcamp (Gas)
<sup>4</sup> Property Code	<sup>5</sup> Property Name NIMITZ MDP1 13_1 FED COM	<sup>6</sup> Well Number 312H
<sup>7</sup> OGRID No. 16696	<sup>8</sup> Operator Name OXY USA INC.	<sup>9</sup> Elevation 3475'

<sup>10</sup> Surface Location

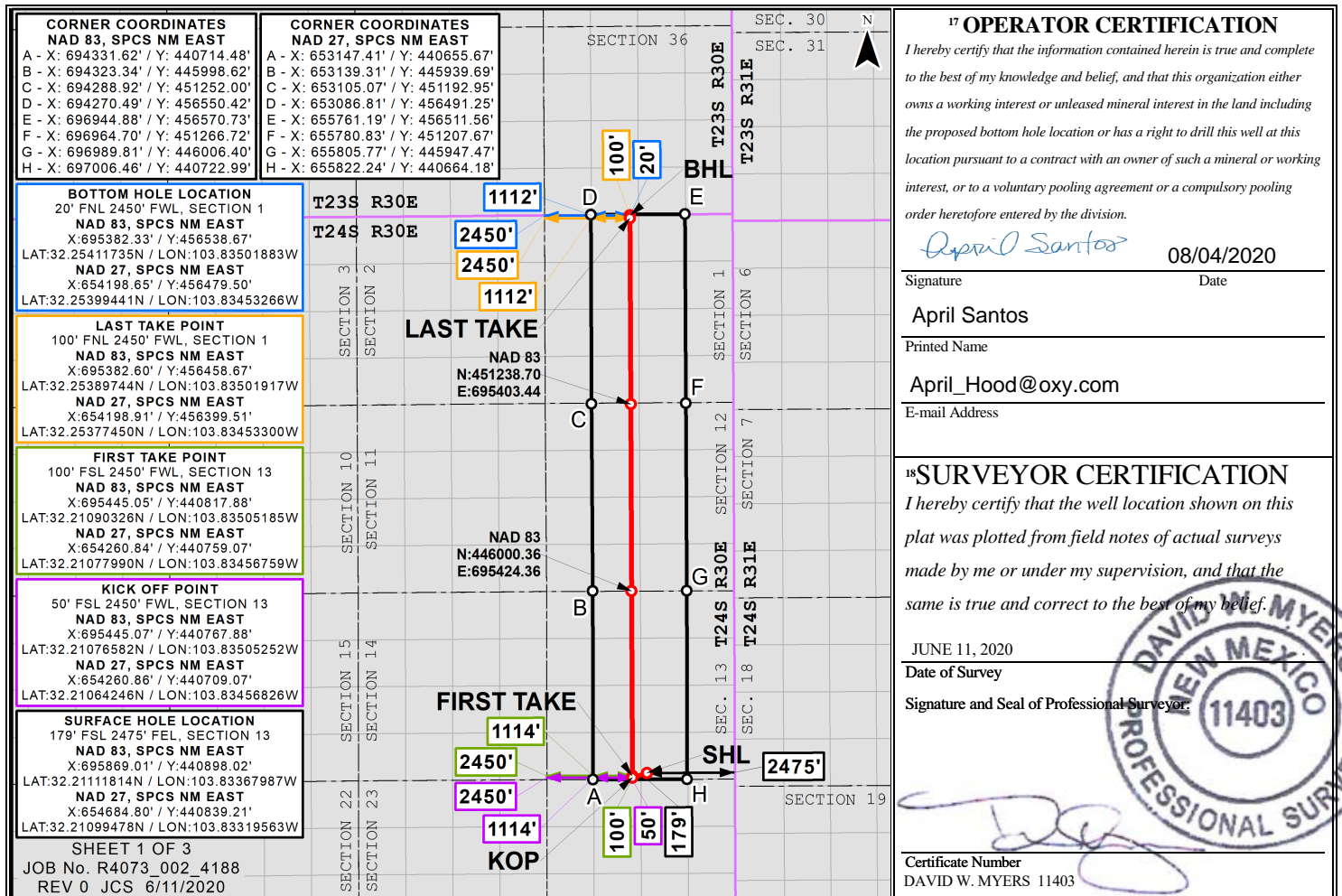
UL or lot no.	Section	Township	Range	Lot Idn	Feet from the	North/South line	Feet from the	East/West line	County
O	13	24S	30E		179	SOUTH	2475	EAST	EDDY

<sup>11</sup> Bottom Hole Location If Different From Surface

UL or lot no.	Section	Township	Range	Lot Idn	Feet from the	North/South line	Feet from the	East/West line	County
L 3	1	24S	30E		20	NORTH	2450	WEST	EDDY

<sup>12</sup> Dedicated Acres 959.9	<sup>13</sup> Joint or Infill	<sup>14</sup> Consolidation Code	<sup>15</sup> Order No.
--	-------------------------------	----------------------------------	-------------------------

No allowable will be assigned to this completion until all interests have been consolidated or a non-standard unit has been approved by the division.



Distances/areas relative to NAD 83 Combined Scale Factor: 0.99977392 Convergence Angle: 00°15'56.81002"

State of New Mexico  
Energy, Minerals and Natural Resources Department

Submit Electronically  
Via E-permitting

Oil Conservation Division  
1220 South St. Francis Dr.  
Santa Fe, NM 87505

## NATURAL GAS MANAGEMENT PLAN

This Natural Gas Management Plan must be submitted with each Application for Permit to Drill (APD) for a new or recompleted well.

### Section 1 – Plan Description

Effective May 25, 2021

**I. Operator:** OXY USA Inc. **OGRID:** 16696 **Date:** 0 6 / 1 6 / 2 1

**II. Type:** ☒ Original ☐ Amendment due to ☐ 19.15.27.9.D(6)(a) NMAC ☐ 19.15.27.9.D(6)(b) NMAC ☐ Other.

If Other, please describe: \_\_\_\_\_

**III. Well(s):** Provide the following information for each new or recompleted well or set of wells proposed to be drilled or proposed to be recompleted from a single well pad or connected to a central delivery point.

Well Name	API	ULSTR	Footages	Anticipated Oil BBL/D	Anticipated Gas MCF/D	Anticipated Produced Water BBL/D
SEE ATTACHED PAGE						

**IV. Central Delivery Point Name:** SENM SC 18 CTB [See 19.15.27.9(D)(1) NMAC]

**V. Anticipated Schedule:** Provide the following information for each new or recompleted well or set of wells proposed to be drilled or proposed to be recompleted from a single well pad or connected to a central delivery point.

Well Name	API	Spud Date	TD Reached Date	Completion Commencement Date	Initial Flow Back Date	First Production Date
SEE ATTACHED PAGE						

**VI. Separation Equipment:** ☒ Attach a complete description of how Operator will size separation equipment to optimize gas capture.

**VII. Operational Practices:** ☒ Attach a complete description of the actions Operator will take to comply with the requirements of Subsection A through F of 19.15.27.8 NMAC.

**VIII. Best Management Practices:** ☒ Attach a complete description of Operator's best management practices to minimize venting during active and planned maintenance.

**Section 2 – Enhanced Plan**  
**EFFECTIVE APRIL 1, 2022**

Beginning April 1, 2022, an operator that is not in compliance with its statewide natural gas capture requirement for the applicable reporting area must complete this section.

☐ Operator certifies that it is not required to complete this section because Operator is in compliance with its statewide natural gas capture requirement for the applicable reporting area.

**IX. Anticipated Natural Gas Production:**

Well	API	Anticipated Average Natural Gas Rate MCF/D	Anticipated Volume of Natural Gas for the First Year MCF

**X. Natural Gas Gathering System (NGGS):**

Operator	System	ULSTR of Tie-in	Anticipated Gathering Start Date	Available Maximum Daily Capacity of System Segment Tie-in

**XI. Map.** ☐ Attach an accurate and legible map depicting the location of the well(s), the anticipated pipeline route(s) connecting the production operations to the existing or planned interconnect of the natural gas gathering system(s), and the maximum daily capacity of the segment or portion of the natural gas gathering system(s) to which the well(s) will be connected.

**XII. Line Capacity.** The natural gas gathering system ☐ will ☐ will not have capacity to gather 100% of the anticipated natural gas production volume from the well prior to the date of first production.

**XIII. Line Pressure.** Operator ☐ does ☐ does not anticipate that its existing well(s) connected to the same segment, or portion, of the natural gas gathering system(s) described above will continue to meet anticipated increases in line pressure caused by the new well(s).

☐ Attach Operator's plan to manage production in response to the increased line pressure.

**XIV. Confidentiality:** ☐ Operator asserts confidentiality pursuant to Section 71-2-8 NMSA 1978 for the information provided in Section 2 as provided in Paragraph (2) of Subsection D of 19.15.27.9 NMAC, and attaches a full description of the specific information for which confidentiality is asserted and the basis for such assertion.

### **Section 3 - Certifications**

**Effective May 25, 2021**

Operator certifies that, after reasonable inquiry and based on the available information at the time of submittal:

☒ Operator will be able to connect the well(s) to a natural gas gathering system in the general area with sufficient capacity to transport one hundred percent of the anticipated volume of natural gas produced from the well(s) commencing on the date of first production, taking into account the current and anticipated volumes of produced natural gas from other wells connected to the pipeline gathering system; or

☐ Operator will not be able to connect to a natural gas gathering system in the general area with sufficient capacity to transport one hundred percent of the anticipated volume of natural gas produced from the well(s) commencing on the date of first production, taking into account the current and anticipated volumes of produced natural gas from other wells connected to the pipeline gathering system.

***If Operator checks this box, Operator will select one of the following:***

**Well Shut-In.** ☐ Operator will shut-in and not produce the well until it submits the certification required by Paragraph (4) of Subsection D of 19.15.27.9 NMAC; or

**Venting and Flaring Plan.** ☐ Operator has attached a venting and flaring plan that evaluates and selects one or more of the potential alternative beneficial uses for the natural gas until a natural gas gathering system is available, including:

- (a) power generation on lease;
- (b) power generation for grid;
- (c) compression on lease;
- (d) liquids removal on lease;
- (e) reinjection for underground storage;
- (f) reinjection for temporary storage;
- (g) reinjection for enhanced oil recovery;
- (h) fuel cell production; and
- (i) other alternative beneficial uses approved by the division.

### **Section 4 - Notices**

1. If, at any time after Operator submits this Natural Gas Management Plan and before the well is spud:

(a) Operator becomes aware that the natural gas gathering system it planned to connect the well(s) to has become unavailable or will not have capacity to transport one hundred percent of the production from the well(s), no later than 20 days after becoming aware of such information, Operator shall submit for OCD's approval a new or revised venting and flaring plan containing the information specified in Paragraph (5) of Subsection D of 19.15.27.9 NMAC; or

(b) Operator becomes aware that it has, cumulatively for the year, become out of compliance with its baseline natural gas capture rate or natural gas capture requirement, no later than 20 days after becoming aware of such information, Operator shall submit for OCD's approval a new or revised Natural Gas Management Plan for each well it plans to spud during the next 90 days containing the information specified in Paragraph (2) of Subsection D of 19.15.27.9 NMAC, and shall file an update for each Natural Gas Management Plan until Operator is back in compliance with its baseline natural gas capture rate or natural gas capture requirement.

2. OCD may deny or conditionally approve an APD if Operator does not make a certification, fails to submit an adequate venting and flaring plan which includes alternative beneficial uses for the anticipated volume of natural gas produced, or if OCD determines that Operator will not have adequate natural gas takeaway capacity at the time a well will be spud.

Page 8

I certify that, after reasonable inquiry, the statements in and attached to this Natural Gas Management Plan are true and correct to the best of my knowledge and acknowledge that a false statement may be subject to civil and criminal penalties under the Oil and Gas Act.

Signature: <i>Leslie T. Reeves</i>
Printed Name: LESLIE REEVES
Title: REGULATORY ADVISOR
E-mail Address: LESLIE_REEVES@OXY.COM
Date: 06/16/2021
Phone: 713-497-2492
<b>OIL CONSERVATION DIVISION</b> <b>(Only applicable when submitted as a standalone form)</b>
Approved By:
Title:
Approval Date:
Conditions of Approval:

## III. Well(s)

Well Name	API	WELL LOCATION (ULSTR)	Footages	ANTICIPATED OIL BBL/D	ANTICIPATED GAS MCF/D	ANTICIPATED PROD WATER BBL/D
Nimitz MDP1 12-1 Federal Com 174H	PENDING	C-13-T24S-R30E	293' FNL 2405' FWL	2200	6800	6300
Nimitz MDP1 12-1 Federal Com 45H	PENDING	P-12-T24S-R30E	439' FSL 1138' FEL	1100	7200	4500
Nimitz MDP1 12-1 Federal Com 46H	PENDING	P-12-T24S-R30E	115' FSL 140' FEL	1100	7200	4500
Nimitz MDP1 13 Federal Com 175H	PENDING	P-12-T24S-R30E	439' FSL 1033' FEL	1200	3700	3400
Nimitz MDP1 13 Federal Com 176H	PENDING	P-12-T24S-R30E	439' FSL 998' FEL	1200	3700	3400
NIMITZ MDP1 13_1 FED COM 171H	PENDING	M-13-T24S-R30E	800' FSL 870' FWL	2800	8600	7900
NIMITZ MDP1 13_1 FED COM 172H	PENDING	M-13-T24S-R30E	800' FSL 940' FWL	2800	8600	7900
NIMITZ MDP1 13_1 FED COM 173H	PENDING	O-13-T24S-R30E	195' FSL 2444' FEL	2800	8600	7900
NIMITZ MDP1 13_1 FED COM 174H	PENDING	P-13-T24S-R30E	230' FSL 350' FEL	2800	8600	7900
NIMITZ MDP1 13_1 FED COM 175H	PENDING	P-13-T24S-R30E	230' FSL 280' FEL	2800	8600	7900
NIMITZ MDP1 13_1 FED COM 1H	PENDING	O-13-T24S-R30E	211' FSL 2413' FEL	3000	4300	5000
NIMITZ MDP1 13_1 FED COM 311H	PENDING	M-13-T24S-R30E	800' FSL 905' FWL	3800	11600	10700
NIMITZ MDP1 13_1 FED COM 312H	PENDING	O-13-T24S-R30E	179' FSL 2475' FEL	3800	11600	10700
NIMITZ MDP1 13_1 FED COM 313H	PENDING	P-13-T24S-R30E	230' FSL 315' FEL	3800	11600	10700



**V. Anticipated Schedule**

Well Name	API	Spud Date	TD Reached Date	Completion Commencement Date	Initial Flow Back Date	First Production Date
Nimitz MDP1 12-1 Federal Com 174H	PENDING	TBD	TBD	TBD	TBD	TBD
Nimitz MDP1 12-1 Federal Com 45H	PENDING	TBD	TBD	TBD	TBD	TBD
Nimitz MDP1 12-1 Federal Com 46H	PENDING	TBD	TBD	TBD	TBD	TBD
Nimitz MDP1 13 Federal Com 175H	PENDING	TBD	TBD	TBD	TBD	TBD
Nimitz MDP1 13 Federal Com 176H	PENDING	TBD	TBD	TBD	TBD	TBD
NIMITZ MDP1 13_1 FED COM 171H	PENDING	TBD	TBD	TBD	TBD	TBD
NIMITZ MDP1 13_1 FED COM 172H	PENDING	TBD	TBD	TBD	TBD	TBD
NIMITZ MDP1 13_1 FED COM 173H	PENDING	TBD	TBD	TBD	TBD	TBD
NIMITZ MDP1 13_1 FED COM 174H	PENDING	TBD	TBD	TBD	TBD	TBD
NIMITZ MDP1 13_1 FED COM 175H	PENDING	TBD	TBD	TBD	TBD	TBD
NIMITZ MDP1 13_1 FED COM 1H	PENDING	TBD	TBD	TBD	TBD	TBD
NIMITZ MDP1 13_1 FED COM 311H	PENDING	TBD	TBD	TBD	TBD	TBD
NIMITZ MDP1 13_1 FED COM 312H	PENDING	TBD	TBD	TBD	TBD	TBD
NIMITZ MDP1 13_1 FED COM 313H	PENDING	TBD	TBD	TBD	TBD	TBD

## **Part VI. Separation Equipment**

Operator will size the flowback separator to handle 11,000 Bbls of fluid and 6-10MMscfd which is more than the expected peak rates for these wells. Each separator is rated to 1440psig, and pressure control valves and automated communication will cause the wells to shut in in the event of an upset at the facility, therefore no gas will be flared on pad during an upset. Current Oxy practices avoid use of flare or venting on pad, therefore if there is an upset or emergency condition at the facility, the wells will immediately shut down, and reassume production once the condition has cleared.

## **VII. Operational Practices**

### **Gathering System and Pipeline Notification**

Well(s) will be connected to a production facility after flowback operations are complete, where a gas transporter system is in place. The gas produced from production facility is dedicated to Enterprise Field Services, LLC ("Enterprise") and is connected to Enterprise low/high pressure gathering system located in Eddy County, New Mexico. OXY USA INC. ("OXY") provides (periodically) to Enterprise a drilling, completion and estimated first production date for wells that are scheduled to be drilled in the foreseeable future. In addition, OXY and Enterprise have periodic conference calls to discuss changes to drilling and completion schedules. Gas from these wells will be processed at Enterprise's Processing Plant located in Sec. 36, Twn. 24S, Rng. 30E, Eddy County, New Mexico. The actual flow of the gas will be based on compression operating parameters and gathering system pressures.

### **Flowback Strategy**

After the fracture treatment/completion operations, well(s) will be produced to temporary production tanks and gas will be flared or vented. During flowback, the fluids and sand content will be monitored. When the produced fluids contain minimal sand, the wells will be turned to production facilities. Gas sales should start as soon as the wells start flowing through the production facilities, unless there are operational issues on Enterprise system at that time. Based on current information, it is OXY's belief the system can take this gas upon completion of the well(s). Safety requirements during cleanout operations from the use of underbalanced air cleanout systems may necessitate that sand and non-pipeline quality gas be vented and/or flared rather than sold on a temporary basis.

### **VIII. Best Management Practices**

#### Alternatives to Reduce Flaring

Below are alternatives considered from a conceptual standpoint to reduce the amount of gas flared.

##### Power Generation – On lease

Only a portion of gas is consumed operating the generator, remainder of gas will be flared

##### Compressed Natural Gas – On lease

Gas flared would be minimal, but might be uneconomical to operate when gas volume declines

##### NGL Removal – On lease

Plants are expensive, residue gas is still flared, and uneconomical to operate when gas volume declines

# Oxy USA Inc. - Nimitz MDP1 13\_1 Fed Com 312H

## Drill Plan

### 1. Geologic Formations

TVD of Target (ft):	11182	Pilot Hole Depth (ft):	
Total Measured Depth (ft):	26744	Deepest Expected Fresh Water (ft):	504

### Delaware Basin

Formation	MD-RKB (ft)	TVD-RKB (ft)	Expected Fluids
Rustler	504	504	
Salado	861	861	Salt
Castile	2732	2732	Salt
Lamar/Delaware	4176	4176	Oil/Gas/Brine
Bell Canyon	4206	4206	Oil/Gas/Brine
Cherry Canyon	5117	5117	Oil/Gas/Brine
Brushy Canyon	6339	6339	Losses
Bone Spring	8051	8051	Oil/Gas
Bone Spring 1st	9007	9004	Oil/Gas
Bone Spring 2nd	9763	9748	Oil/Gas
Bone Spring 3rd	10985	10933	Oil/Gas
Wolfcamp			Oil/Gas
Penn			Oil/Gas
Strawn			Oil/Gas

\*H2S, water flows, loss of circulation, abnormal pressures, etc.

### 2. Casing Program

		MD		TVD					
Section	Hole Size (in)	From (ft)	To (ft)	From (ft)	To (ft)	Csg. OD (in)	Csg Wt. (ppf)	Grade	Conn.
Surface	14.75	0	564	0	564	10.75	45.5	J-55	BTC
Intermediate	9.875	0	10508	0	10480	7.625	26.4	L-80 HC	BTC
Production	6.75	0	26744	0	11182	5.5	20	P-110	DQX

All casing strings will be tested in accordance with Onshore Oil and Gas Order #2 III.B.1.h

\*Oxy requests the option to run the 7.625” Intermediate II as a contingency string to be run only if severe hole conditions dictate an additional casing string necessary.

\*Oxy requests the option to run production casing with DQX, TORQ DQW and/or TORQ SFW connections to accommodate hole conditions or drilling operations.

All Casing SF Values will meet or exceed those below			
SF Collapse	SF Burst	Body SF Tension	Joint SF Tension
1.125	1.2	1.4	1.4

Annular Clearance Variance Request

As per the agreement reached in the Oxy/BLM face-to-face meeting on Feb 22, 2018, Oxy requests permission to allow deviation from the 0.422” annular clearance requirement from Onshore Order #2 under the following conditions:

1. Annular clearance to meet or exceed 0.422” between intermediate casing ID and production casing coupling only on the first 500’ overlap between both casings.
2. Annular clearance less than 0.422” is acceptable for the curve and lateral portions of the production open hole section.

	Y or N
Is casing new? If used, attach certification as required in Onshore Order #1	Y
Does casing meet API specifications? If no, attach casing specification sheet.	Y
Is premium or uncommon casing planned? If yes attach casing specification sheet.	Y
Does the above casing design meet or exceed BLM’s minimum standards? If not provide justification (loading assumptions, casing design criteria).	Y
Will the intermediate pipe be kept at a minimum 1/3 fluid filled to avoid approaching the collapse pressure rating of the casing?	Y
Is well located within Capitan Reef?	N
If yes, does production casing cement tie back a minimum of 50’ above the Reef?	
Is well within the designated 4 string boundary.	
Is well located in SOPA but not in R-111-P?	Y
If yes, are the first 2 strings cemented to surface and 3 <sup>rd</sup> string cement tied back 500’ into previous casing?	Y
Is well located in R-111-P and SOPA?	N
If yes, are the first three strings cemented to surface?	
Is 2 <sup>nd</sup> string set 100’ to 600’ below the base of salt?	
Is well located in high Cave/Karst?	N
If yes, are there two strings cemented to surface?	
(For 2 string wells) If yes, is there a contingency casing if lost circulation occurs?	
Is well located in critical Cave/Karst?	N
If yes, are there three strings cemented to surface?	

3. Cementing Program

Section	Stage	Slurry:	Capacities	ft^3/ft	Excess:	From	To	Sacks	Volume (ft^3)	Placement
Surface	1	Surface - Tail	OH x Csg	0.5563	100%	564	-	472	628	Circulate
Int.	1	Intermediate 1S - Tail	OH x Csg	0.2148	5%	10,508	6,589	536	884	Circulate
Int.	2	Intermediate 2S - Tail BH	OH x Csg	0.2148	25%	6,589	564	842	1617	Bradenhead
Int.	2	Intermediate 2S - Tail BH	Csg x Csg	0.2338	0%	564	-	69	132	Bradenhead
Prod.	1	Production - Tail	OH x Csg	0.0835	20%	26,744	10,508	1179	1627	Circulate
Prod.	1	Production - Tail	Csg x Csg	0.0999	0%	10,508	10,008	36	50	Circulate

Description	Density (lb/gal)	Yield (ft3/sk)	Water (gal/sk)	500psi Time (hh:mm)	Cmt. Class	Accelerator	Retarder	Dispersant	Salt
Surface - Tail	14.8	1.33	6.365	5:26	C	x			
Intermediate 1S - Tail	13.2	1.65	8.64	11:54	H	x	x	x	x
Intermediate 2S - Tail BH	12.9	1.92	10.41	23:10	C	x			
Production - Tail	13.2	1.38	6.686	3:39	H		x	x	x



## Offline Cementing

Oxy requests a variance to cement the 9.625" and/or 7.625" intermediate casing strings offline in accordance to the approved variance, EC Tran 461365.

The summarized operational sequence will be as follows:

Run casing as per normal operations. While running casing, conduct negative pressure test and confirm integrity of the float equipment (float collar and shoe).

Land casing.

Fill pipe with kill weight fluid, and confirm well is static.

If well Oxy requests a variance to cement the 9.625" and/or 7.625" intermediate casing strings offline in accordance to the approved variance, EC Tran 461365.

The summarized operational sequence will be as follows:

1. Run casing as per normal operations. While running casing, conduct negative pressure test and confirm integrity of the float equipment (float collar and shoe).
2. Land casing.
3. Fill pipe with kill weight fluid, and confirm well is static.
  - a. If well is not static notify BLM and kill well.
  - b. Once well is static notify BLM with intent to proceed with nipple down and offline cementing.
4. Set and pressure test annular packoff.
5. After confirmation of both annular barriers and internal barriers, nipple down BOP and install cap flange. If any barrier fails to test, the BOP stack will not be nipped down until after the cement job is completed.
6. Skid rig to next well on pad.
7. Confirm well is static before removing cap flange.
8. If well is not static notify BLM and kill well prior to cementing or nipping up for further remediation.
9. Install offline cement tool.
10. Rig up cement equipment.
  - a. Notify BLM prior to cement job.
11. Perform cement job.
12. Confirm well is static and floats are holding after cement job.
13. Remove cement equipment, offline cement tools and install night cap with pressure gauge for monitoring.

Oxy requests permission to adjust the CBL requirement after bradenhead cement jobs, on 7-5/8" intermediate casings, as per the agreement reached in the OXY/BLM meeting on September 5, 2019.

### Three string wells:

- CBL will be required on one well per pad
- If the pumped volume of cement is less than permitted in the APD, BLM will be notified and a CBL may be run
- Echometer will be used after bradenhead cement job to determine TOC before pumping top-out cement



4. Pressure Control Equipment

BOP installed and tested before drilling which hole?	Size?	Min. Required WP	Type		✓	Tested to:	Deepest TVD Depth (ft) per Section:
9.875" Hole	13-5/8"	3M	Annular		✓	70% of working pressure	10480
		3M	Blind Ram		✓	250 psi / 3000 psi	
			Pipe Ram				
			Double Ram		✓		
			Other*				
6.75" Hole	13-5/8"	5M	Annular		✓	70% of working pressure	11182
		5M	Blind Ram		✓	250 psi / 5000 psi	
			Pipe Ram				
			Double Ram		✓		
			Other*				

\*Specify if additional ram is utilized

BOP/BOPE will be tested by an independent service company to 250 psi low and the high pressure indicated above per Onshore Order 2 requirements. The System may be upgraded to a higher pressure but still tested to the working pressure listed in the table above. If the system is upgraded all the components installed will be functional and tested.

Pipe rams will be operationally checked each 24 hour period. Blind rams will be operationally checked on each trip out of the hole. These checks will be noted on the daily tour sheets. Other accessories to the BOP equipment will include a Kelly cock and floor safety valve (inside BOP) and choke lines and choke

	Formation integrity test will be performed per Onshore Order #2.	
	On Exploratory wells or on that portion of any well approved for a 5M BOPE system or greater, a pressure integrity test of each casing shoe shall be performed. Will be tested in accordance with Onshore Oil and Gas Order #2 III.B.1.i.	
	A variance is requested for the use of a flexible choke line from the BOP to Choke Manifold. See attached for specs and hydrostatic test chart.	
	Y	Are anchors required by manufacturer?
	<p>A multibowl or a unionized multibowl wellhead system will be employed. The wellhead and connection to the BOPE will meet all API 6A requirements. The BOP will be tested per Onshore Order #2 after installation on the surface casing which will cover testing requirements for a maximum of 30 days. If any seal subject to test pressure is broken the system must be tested. We will test the flange connection of the wellhead with a test port that is directly in the flange. We are proposing that we will run the wellhead through the rotary prior to cementing surface casing as discussed with the BLM on October 8, 2015.</p> <p>See attached schematics.</p>	

**BOP Break Testing Request**

Oxy requests permission to adjust the BOP break testing requirements as per the agreement reached in the OXY/BLM meeting on September 5, 2019. A separate sundry will be sent prior to spud that reflects the pad based break testing plan.

BOP break test under the following conditions:

- After a full BOP test is conducted
- When skidding to drill an intermediate section where ICP is set into the third Bone Spring or shallower.
- When skidding to drill a production section that does not penetrate into the third Bone Spring or deeper.

If the kill line is broken prior to skid, two tests will be performed.

- 1) Wellhead flange, co-flex hose, kill line connections and upper pipe rams
- 2) Wellhead flange, HCR valve, check valve, upper pipe rams

If the kill line is not broken prior to skid, only one test will be performed.

5. Mud Program

Section	Depth - MD		Depth - TVD		Type	Weight (ppg)	Viscosity	Water Loss
	From (ft)	To (ft)	From (ft)	To (ft)				
Surface	0	564	0	564	Water-Based Mud	8.6 - 8.8	40-60	N/C
Intermediate	564	10508	564	10480	Saturated Brine-Based or Oil-Based Mud	8.0 - 10.0	35-45	N/C
Production	10508	26744	10480	11182	Water-Based or Oil-Based Mud	9.5 - 12	38-50	N/C

Sufficient mud materials to maintain mud properties and meet minimum lost circulation and weight increase requirements will be kept on location at all times. The following is a general list of products: Barite, Bentonite, Gypsum, Lime, Soda Ash, Caustic Soda, Nut Plug, Cedar Fiber, Cotton Seed Hulls, Drilling Paper, Salt Water Clay, CACL2. Oxy will use a closed mud system.

What will be used to monitor the loss or gain of fluid?	PVT/MD Totco/Visual Monitoring
---	--------------------------------

6. Logging and Testing Procedures

Logging, Coring and Testing.	
Yes	Will run GR from TD to surface (horizontal well – vertical portion of hole).
	Stated logs run will be in the Completion Report and submitted to the BLM.
No	Logs are planned based on well control or offset log information.
No	Drill stem test? If yes, explain
No	Coring? If yes, explain

Additional logs planned		Interval
No	Resistivity	
No	Density	
No	CBL	
Yes	Mud log	Bone Spring – TD
No	PEX	

7. Drilling Conditions

Condition	Specify what type and where?
BH Pressure at deepest TVD	6978 psi
Abnormal Temperature	No
BH Temperature at deepest TVD	170°F

Pump high viscosity sweeps as needed for hole cleaning. The mud system will be monitored visually/manually as well as with an electronic PVT. The necessary mud products for additional weight and fluid loss control will be on location at all times. Appropriately weighted mud will be used to isolate potential gas, oil, and water zones until such time as casing can be cemented into place for

Hydrogen Sulfide (H2S) monitors will be installed prior to drilling out the surface shoe. If H2S is detected in concentrations greater than 100 ppm, the operator will comply with the provisions of Onshore Oil and Gas Order #6. If Hydrogen Sulfide is encountered, measured values and formations will be provided to the BLM.	
N	H2S is present
Y	H2S Plan attached

8. Other facets of operation

	Yes/No
Will the well be drilled with a walking/skidding operation? If yes, describe. We plan to drill the 3 well pad in batch by section: all surface sections, intermediate sections and production sections. The wellhead will be secured with a night cap whenever the rig is not over the well.	Yes
Will more than one drilling rig be used for drilling operations? If yes, describe. Oxy requests the option to contract a Surface Rig to drill, set surface casing, and cement for this well. If the timing between rigs is such that Oxy would not be able to preset surface, the Primary Rig will MIRU and drill the well in its entirety per the APD. Please see the attached document for information on the spudder rig.	Yes

<b>Total Estimated Cuttings Volume:</b> 1780 bbls
---

- Attachments
- ☒ Directional Plan
  - ☒ H2S Contingency Plan
  - ☒ Flex III Attachments
  - ☒ Spudder Rig Attachment

9. Company Personnel

Name	Title	Office Phone	Mobile Phone
Linsay Earle	Drilling Engineer	713-350-4921	832-596-5507
William Turner	Drilling Engineer Supervisor	713-350-4951	661-817-4586
Simon Benavides	Drilling Superintendent	713-522-8652	281-684-6897
Diego Tellez	Drilling Manager	713-350-4602	713-303-4932

**OXY USA Inc.**  
**APD Attachment**  
**Offline Cementing**

OXY respectfully requests a variance to cement the 9-5/8" and/or 7-5/8" intermediate casing strings offline.

The summarized operational sequence will be as follows:

1. Run casing as per normal operations. While running casing, conduct negative pressure test and confirm integrity of the float equipment (float collar and shoe).
2. Land casing.
3. Fill pipe with kill weight fluid, and confirm well is static.
  - a. If well is not static notify BLM and kill well.
  - b. Once well is static notify BLM with intent to proceed with nipple down and offline cementing.
4. Set and pressure test annular packoff.
5. After confirmation of both annular barriers and internal barriers, nipple down BOP and install cap flange. If any barrier fails to test, the BOP stack will not be nipped down until after the cement job is completed.
6. Skid rig to next well on pad.
7. Confirm well is static before removing cap flange.
8. If well is not static notify BLM and kill well prior to cementing or nipping up for further remediation.
9. Install offline cement tool.
10. Rig up cement equipment.
  - a. Notify BLM prior to cement job.
11. Perform cement job.
12. Confirm well is static and floats are holding after cement job.
13. Remove cement equipment, offline cement tools and install night cap with pressure gauge for monitoring.

# **OXY**

**PRD NM DIRECTIONAL PLANS (NAD 1983)**

**Nimitz MDP1 13\_1**

**Nimitz MDP1 13\_1 Fed Com 312H**

**Wellbore #1**

**Plan: Permitting Plan**

## **Standard Planning Report**

**13 July, 2020**

# Oxy Inc.

## Planning Report

<b>Database:</b>	HOPSP	<b>Local Co-ordinate Reference:</b>	Well Nimitz MDP1 13_1 Fed Com 312H
<b>Company:</b>	ENGINEERING DESIGNS	<b>TVD Reference:</b>	RKB=26.5' @ 3501.50ft
<b>Project:</b>	PRD NM DIRECTIONAL PLANS (NAD 1983)	<b>MD Reference:</b>	RKB=26.5' @ 3501.50ft
<b>Site:</b>	Nimitz MDP1 13_1	<b>North Reference:</b>	Grid
<b>Well:</b>	Nimitz MDP1 13_1 Fed Com 312H	<b>Survey Calculation Method:</b>	Minimum Curvature
<b>Wellbore:</b>	Wellbore #1		
<b>Design:</b>	Permitting Plan		

<b>Project</b>	PRD NM DIRECTIONAL PLANS (NAD 1983)		
<b>Map System:</b>	US State Plane 1983	<b>System Datum:</b>	Mean Sea Level
<b>Geo Datum:</b>	North American Datum 1983		
<b>Map Zone:</b>	New Mexico Eastern Zone		Using geodetic scale factor

Site		Nimitz MDP1 13_1			
Site Position:		Northing:	440,930.39 usft	Latitude:	32° 12' 40.342765 N
From:	Map	Easting:	695,931.15 usft	Longitude:	103° 50' 0.522510 W
Position Uncertainty:	1.00 ft	Slot Radius:	13.200 in	Grid Convergence:	0.27 °

Well	Nimitz MDP1 13_1 Fed Com 312H					
Well Position	+N/-S	-32.37 ft	Northing:	440,898.02 usft	Latitude:	32° 12' 40.025300 N
	+E/-W	-62.14 ft	Easting:	695,869.01 usft	Longitude:	103° 50' 1.247551 W
Position Uncertainty		1.00 ft	Wellhead Elevation:		Ground Level:	3,475.00 ft

<b>Wellbore</b>	Wellbore #1				
<b>Magnetics</b>	<b>Model Name</b>	<b>Sample Date</b>	<b>Declination (°)</b>	<b>Dip Angle (°)</b>	<b>Field Strength (nT)</b>
	HDGM_FILE	7/13/2020	6.67	59.85	47,792.70000000

<b>Design</b>	Permitting Plan				
<b>Audit Notes:</b>					
<b>Version:</b>	<b>Phase:</b>	PROTOTYPE	<b>Tie On Depth:</b>	0.00	
<b>Vertical Section:</b>	<b>Depth From (TVD) (ft)</b>	<b>+N/-S (ft)</b>	<b>+E/-W (ft)</b>	<b>Direction (°)</b>	
	0.00	0.00	0.00	358.22	

<b>Plan Survey Tool Program</b>	<b>Date</b>	7/13/2020			
<b>Depth From (ft)</b>	<b>Depth To (ft)</b>	<b>Survey (Wellbore)</b>	<b>Tool Name</b>	<b>Remarks</b>	
1	0.00	26,744.14	Permitting Plan (Wellbore #1)	B001Mb_MWD+HRGM	
				OWSG MWD + HRGM	

<b>Plan Sections</b>										
<b>Measured Depth (ft)</b>	<b>Inclination (°)</b>	<b>Azimuth (°)</b>	<b>Vertical Depth (ft)</b>	<b>+N/-S (ft)</b>	<b>+E/-W (ft)</b>	<b>Dogleg Rate (°/100ft)</b>	<b>Build Rate (°/100ft)</b>	<b>Turn Rate (°/100ft)</b>	<b>TFO (°)</b>	<b>Target</b>
0.00	0.00	0.00	0.00	0.00	0.00	0.00	0.00	0.00	0.00	
8,100.00	0.00	0.00	8,100.00	0.00	0.00	0.00	0.00	0.00	0.00	
9,100.00	10.00	248.39	9,094.93	-32.06	-80.93	1.00	1.00	0.00	248.39	
10,608.45	10.00	248.39	10,580.46	-128.53	-324.46	0.00	0.00	0.00	0.00	
11,549.21	90.45	359.77	11,181.50	447.35	-426.23	10.00	8.55	11.84	111.01	
26,744.14	90.45	359.77	11,061.50	15,641.68	-486.71	0.00	0.00	0.00	0.00	PBHL (Nimitz MDP1)



# Oxy Inc.

## Planning Report

<b>Database:</b>	HOPSP	<b>Local Co-ordinate Reference:</b>	Well Nimitz MDP1 13_1 Fed Com 312H
<b>Company:</b>	ENGINEERING DESIGNS	<b>TVD Reference:</b>	RKB=26.5' @ 3501.50ft
<b>Project:</b>	PRD NM DIRECTIONAL PLANS (NAD 1983)	<b>MD Reference:</b>	RKB=26.5' @ 3501.50ft
<b>Site:</b>	Nimitz MDP1 13_1	<b>North Reference:</b>	Grid
<b>Well:</b>	Nimitz MDP1 13_1 Fed Com 312H	<b>Survey Calculation Method:</b>	Minimum Curvature
<b>Wellbore:</b>	Wellbore #1		
<b>Design:</b>	Permitting Plan		

Planned Survey									
Measured Depth (ft)	Inclination (°)	Azimuth (°)	Vertical Depth (ft)	+N/-S (ft)	+E/-W (ft)	Vertical Section (ft)	Dogleg Rate (°/100ft)	Build Rate (°/100ft)	Turn Rate (°/100ft)
0.00	0.00	0.00	0.00	0.00	0.00	0.00	0.00	0.00	0.00
100.00	0.00	0.00	100.00	0.00	0.00	0.00	0.00	0.00	0.00
200.00	0.00	0.00	200.00	0.00	0.00	0.00	0.00	0.00	0.00
300.00	0.00	0.00	300.00	0.00	0.00	0.00	0.00	0.00	0.00
400.00	0.00	0.00	400.00	0.00	0.00	0.00	0.00	0.00	0.00
500.00	0.00	0.00	500.00	0.00	0.00	0.00	0.00	0.00	0.00
600.00	0.00	0.00	600.00	0.00	0.00	0.00	0.00	0.00	0.00
700.00	0.00	0.00	700.00	0.00	0.00	0.00	0.00	0.00	0.00
800.00	0.00	0.00	800.00	0.00	0.00	0.00	0.00	0.00	0.00
900.00	0.00	0.00	900.00	0.00	0.00	0.00	0.00	0.00	0.00
1,000.00	0.00	0.00	1,000.00	0.00	0.00	0.00	0.00	0.00	0.00
1,100.00	0.00	0.00	1,100.00	0.00	0.00	0.00	0.00	0.00	0.00
1,200.00	0.00	0.00	1,200.00	0.00	0.00	0.00	0.00	0.00	0.00
1,300.00	0.00	0.00	1,300.00	0.00	0.00	0.00	0.00	0.00	0.00
1,400.00	0.00	0.00	1,400.00	0.00	0.00	0.00	0.00	0.00	0.00
1,500.00	0.00	0.00	1,500.00	0.00	0.00	0.00	0.00	0.00	0.00
1,600.00	0.00	0.00	1,600.00	0.00	0.00	0.00	0.00	0.00	0.00
1,700.00	0.00	0.00	1,700.00	0.00	0.00	0.00	0.00	0.00	0.00
1,800.00	0.00	0.00	1,800.00	0.00	0.00	0.00	0.00	0.00	0.00
1,900.00	0.00	0.00	1,900.00	0.00	0.00	0.00	0.00	0.00	0.00
2,000.00	0.00	0.00	2,000.00	0.00	0.00	0.00	0.00	0.00	0.00
2,100.00	0.00	0.00	2,100.00	0.00	0.00	0.00	0.00	0.00	0.00
2,200.00	0.00	0.00	2,200.00	0.00	0.00	0.00	0.00	0.00	0.00
2,300.00	0.00	0.00	2,300.00	0.00	0.00	0.00	0.00	0.00	0.00
2,400.00	0.00	0.00	2,400.00	0.00	0.00	0.00	0.00	0.00	0.00
2,500.00	0.00	0.00	2,500.00	0.00	0.00	0.00	0.00	0.00	0.00
2,600.00	0.00	0.00	2,600.00	0.00	0.00	0.00	0.00	0.00	0.00
2,700.00	0.00	0.00	2,700.00	0.00	0.00	0.00	0.00	0.00	0.00
2,800.00	0.00	0.00	2,800.00	0.00	0.00	0.00	0.00	0.00	0.00
2,900.00	0.00	0.00	2,900.00	0.00	0.00	0.00	0.00	0.00	0.00
3,000.00	0.00	0.00	3,000.00	0.00	0.00	0.00	0.00	0.00	0.00
3,100.00	0.00	0.00	3,100.00	0.00	0.00	0.00	0.00	0.00	0.00
3,200.00	0.00	0.00	3,200.00	0.00	0.00	0.00	0.00	0.00	0.00
3,300.00	0.00	0.00	3,300.00	0.00	0.00	0.00	0.00	0.00	0.00
3,400.00	0.00	0.00	3,400.00	0.00	0.00	0.00	0.00	0.00	0.00
3,500.00	0.00	0.00	3,500.00	0.00	0.00	0.00	0.00	0.00	0.00
3,600.00	0.00	0.00	3,600.00	0.00	0.00	0.00	0.00	0.00	0.00
3,700.00	0.00	0.00	3,700.00	0.00	0.00	0.00	0.00	0.00	0.00
3,800.00	0.00	0.00	3,800.00	0.00	0.00	0.00	0.00	0.00	0.00
3,900.00	0.00	0.00	3,900.00	0.00	0.00	0.00	0.00	0.00	0.00
4,000.00	0.00	0.00	4,000.00	0.00	0.00	0.00	0.00	0.00	0.00
4,100.00	0.00	0.00	4,100.00	0.00	0.00	0.00	0.00	0.00	0.00
4,200.00	0.00	0.00	4,200.00	0.00	0.00	0.00	0.00	0.00	0.00
4,300.00	0.00	0.00	4,300.00	0.00	0.00	0.00	0.00	0.00	0.00
4,400.00	0.00	0.00	4,400.00	0.00	0.00	0.00	0.00	0.00	0.00
4,500.00	0.00	0.00	4,500.00	0.00	0.00	0.00	0.00	0.00	0.00
4,600.00	0.00	0.00	4,600.00	0.00	0.00	0.00	0.00	0.00	0.00
4,700.00	0.00	0.00	4,700.00	0.00	0.00	0.00	0.00	0.00	0.00
4,800.00	0.00	0.00	4,800.00	0.00	0.00	0.00	0.00	0.00	0.00
4,900.00	0.00	0.00	4,900.00	0.00	0.00	0.00	0.00	0.00	0.00
5,000.00	0.00	0.00	5,000.00	0.00	0.00	0.00	0.00	0.00	0.00
5,100.00	0.00	0.00	5,100.00	0.00	0.00	0.00	0.00	0.00	0.00
5,200.00	0.00	0.00	5,200.00	0.00	0.00	0.00	0.00	0.00	0.00
5,300.00	0.00	0.00	5,300.00	0.00	0.00	0.00	0.00	0.00	0.00



# Oxy Inc.

## Planning Report

<b>Database:</b>	HOPSP	<b>Local Co-ordinate Reference:</b>	Well Nimitz MDP1 13_1 Fed Com 312H
<b>Company:</b>	ENGINEERING DESIGNS	<b>TVD Reference:</b>	RKB=26.5' @ 3501.50ft
<b>Project:</b>	PRD NM DIRECTIONAL PLANS (NAD 1983)	<b>MD Reference:</b>	RKB=26.5' @ 3501.50ft
<b>Site:</b>	Nimitz MDP1 13_1	<b>North Reference:</b>	Grid
<b>Well:</b>	Nimitz MDP1 13_1 Fed Com 312H	<b>Survey Calculation Method:</b>	Minimum Curvature
<b>Wellbore:</b>	Wellbore #1		
<b>Design:</b>	Permitting Plan		

Planned Survey									
Measured Depth (ft)	Inclination (°)	Azimuth (°)	Vertical Depth (ft)	+N/-S (ft)	+E/-W (ft)	Vertical Section (ft)	Dogleg Rate (°/100ft)	Build Rate (°/100ft)	Turn Rate (°/100ft)
5,400.00	0.00	0.00	5,400.00	0.00	0.00	0.00	0.00	0.00	0.00
5,500.00	0.00	0.00	5,500.00	0.00	0.00	0.00	0.00	0.00	0.00
5,600.00	0.00	0.00	5,600.00	0.00	0.00	0.00	0.00	0.00	0.00
5,700.00	0.00	0.00	5,700.00	0.00	0.00	0.00	0.00	0.00	0.00
5,800.00	0.00	0.00	5,800.00	0.00	0.00	0.00	0.00	0.00	0.00
5,900.00	0.00	0.00	5,900.00	0.00	0.00	0.00	0.00	0.00	0.00
6,000.00	0.00	0.00	6,000.00	0.00	0.00	0.00	0.00	0.00	0.00
6,100.00	0.00	0.00	6,100.00	0.00	0.00	0.00	0.00	0.00	0.00
6,200.00	0.00	0.00	6,200.00	0.00	0.00	0.00	0.00	0.00	0.00
6,300.00	0.00	0.00	6,300.00	0.00	0.00	0.00	0.00	0.00	0.00
6,400.00	0.00	0.00	6,400.00	0.00	0.00	0.00	0.00	0.00	0.00
6,500.00	0.00	0.00	6,500.00	0.00	0.00	0.00	0.00	0.00	0.00
6,600.00	0.00	0.00	6,600.00	0.00	0.00	0.00	0.00	0.00	0.00
6,700.00	0.00	0.00	6,700.00	0.00	0.00	0.00	0.00	0.00	0.00
6,800.00	0.00	0.00	6,800.00	0.00	0.00	0.00	0.00	0.00	0.00
6,900.00	0.00	0.00	6,900.00	0.00	0.00	0.00	0.00	0.00	0.00
7,000.00	0.00	0.00	7,000.00	0.00	0.00	0.00	0.00	0.00	0.00
7,100.00	0.00	0.00	7,100.00	0.00	0.00	0.00	0.00	0.00	0.00
7,200.00	0.00	0.00	7,200.00	0.00	0.00	0.00	0.00	0.00	0.00
7,300.00	0.00	0.00	7,300.00	0.00	0.00	0.00	0.00	0.00	0.00
7,400.00	0.00	0.00	7,400.00	0.00	0.00	0.00	0.00	0.00	0.00
7,500.00	0.00	0.00	7,500.00	0.00	0.00	0.00	0.00	0.00	0.00
7,600.00	0.00	0.00	7,600.00	0.00	0.00	0.00	0.00	0.00	0.00
7,700.00	0.00	0.00	7,700.00	0.00	0.00	0.00	0.00	0.00	0.00
7,800.00	0.00	0.00	7,800.00	0.00	0.00	0.00	0.00	0.00	0.00
7,900.00	0.00	0.00	7,900.00	0.00	0.00	0.00	0.00	0.00	0.00
8,000.00	0.00	0.00	8,000.00	0.00	0.00	0.00	0.00	0.00	0.00
8,100.00	0.00	0.00	8,100.00	0.00	0.00	0.00	0.00	0.00	0.00
8,200.00	1.00	248.39	8,200.00	-0.32	-0.81	-0.30	1.00	1.00	0.00
8,300.00	2.00	248.39	8,299.96	-1.29	-3.24	-1.18	1.00	1.00	0.00
8,400.00	3.00	248.39	8,399.86	-2.89	-7.30	-2.66	1.00	1.00	0.00
8,500.00	4.00	248.39	8,499.68	-5.14	-12.98	-4.73	1.00	1.00	0.00
8,600.00	5.00	248.39	8,599.37	-8.03	-20.27	-7.40	1.00	1.00	0.00
8,700.00	6.00	248.39	8,698.90	-11.56	-29.18	-10.65	1.00	1.00	0.00
8,800.00	7.00	248.39	8,798.26	-15.73	-39.71	-14.49	1.00	1.00	0.00
8,900.00	8.00	248.39	8,897.40	-20.54	-51.84	-18.91	1.00	1.00	0.00
9,000.00	9.00	248.39	8,996.30	-25.98	-65.58	-23.93	1.00	1.00	0.00
9,100.00	10.00	248.39	9,094.93	-32.06	-80.93	-29.53	1.00	1.00	0.00
9,200.00	10.00	248.39	9,193.41	-38.45	-97.07	-35.42	0.00	0.00	0.00
9,300.00	10.00	248.39	9,291.89	-44.85	-113.22	-41.31	0.00	0.00	0.00
9,400.00	10.00	248.39	9,390.37	-51.24	-129.36	-47.20	0.00	0.00	0.00
9,500.00	10.00	248.39	9,488.85	-57.64	-145.50	-53.09	0.00	0.00	0.00
9,600.00	10.00	248.39	9,587.33	-64.03	-161.65	-58.98	0.00	0.00	0.00
9,700.00	10.00	248.39	9,685.82	-70.43	-177.79	-64.87	0.00	0.00	0.00
9,800.00	10.00	248.39	9,784.30	-76.82	-193.94	-70.76	0.00	0.00	0.00
9,900.00	10.00	248.39	9,882.78	-83.22	-210.08	-76.65	0.00	0.00	0.00
10,000.00	10.00	248.39	9,981.26	-89.61	-226.23	-82.54	0.00	0.00	0.00
10,100.00	10.00	248.39	10,079.74	-96.01	-242.37	-88.43	0.00	0.00	0.00
10,200.00	10.00	248.39	10,178.22	-102.41	-258.51	-94.32	0.00	0.00	0.00
10,300.00	10.00	248.39	10,276.70	-108.80	-274.66	-100.21	0.00	0.00	0.00
10,400.00	10.00	248.39	10,375.18	-115.20	-290.80	-106.10	0.00	0.00	0.00
10,500.00	10.00	248.39	10,473.66	-121.59	-306.95	-111.99	0.00	0.00	0.00
10,600.00	10.00	248.39	10,572.14	-127.99	-323.09	-117.88	0.00	0.00	0.00
10,608.45	10.00	248.39	10,580.46	-128.53	-324.46	-118.37	0.00	0.00	0.00

# Oxy Inc.

## Planning Report

<b>Database:</b>	HOPSPP	<b>Local Co-ordinate Reference:</b>	Well Nimitz MDP1 13_1 Fed Com 312H
<b>Company:</b>	ENGINEERING DESIGNS	<b>TVD Reference:</b>	RKB=26.5' @ 3501.50ft
<b>Project:</b>	PRD NM DIRECTIONAL PLANS (NAD 1983)	<b>MD Reference:</b>	RKB=26.5' @ 3501.50ft
<b>Site:</b>	Nimitz MDP1 13_1	<b>North Reference:</b>	Grid
<b>Well:</b>	Nimitz MDP1 13_1 Fed Com 312H	<b>Survey Calculation Method:</b>	Minimum Curvature
<b>Wellbore:</b>	Wellbore #1		
<b>Design:</b>	Permitting Plan		

Planned Survey										
Measured Depth (ft)	Inclination (°)	Azimuth (°)	Vertical Depth (ft)	+N/-S (ft)	+E/-W (ft)	Vertical Section (ft)	Dogleg Rate (°/100ft)	Build Rate (°/100ft)	Turn Rate (°/100ft)	
10,700.00	10.84	300.58	10,670.69	-127.07	-339.29	-116.46	10.00	0.91	57.01	
10,800.00	18.06	329.45	10,767.58	-108.89	-355.30	-97.79	10.00	7.23	28.87	
10,900.00	27.08	340.96	10,859.87	-73.94	-370.64	-62.37	10.00	9.02	11.50	
11,000.00	36.58	346.91	10,944.76	-23.27	-384.86	-11.28	10.00	9.50	5.95	
11,100.00	46.28	350.66	11,019.65	41.58	-397.50	53.92	10.00	9.69	3.75	
11,200.00	56.06	353.35	11,082.29	118.63	-408.20	131.27	10.00	9.78	2.69	
11,300.00	65.88	355.48	11,130.77	205.55	-416.62	218.40	10.00	9.83	2.13	
11,400.00	75.73	357.30	11,163.60	299.68	-422.51	312.68	10.00	9.85	1.82	
11,500.00	85.60	358.97	11,179.81	398.18	-425.69	411.23	10.00	9.86	1.67	
11,549.21	90.45	359.77	11,181.50	447.35	-426.23	460.39	10.00	9.87	1.62	
11,600.00	90.45	359.77	11,181.10	498.13	-426.43	511.15	0.00	0.00	0.00	
11,700.00	90.45	359.77	11,180.31	598.13	-426.83	611.11	0.00	0.00	0.00	
11,800.00	90.45	359.77	11,179.52	698.12	-427.23	711.07	0.00	0.00	0.00	
11,900.00	90.45	359.77	11,178.73	798.12	-427.63	811.03	0.00	0.00	0.00	
12,000.00	90.45	359.77	11,177.94	898.12	-428.03	910.99	0.00	0.00	0.00	
12,100.00	90.45	359.77	11,177.15	998.11	-428.42	1,010.95	0.00	0.00	0.00	
12,200.00	90.45	359.77	11,176.36	1,098.11	-428.82	1,110.91	0.00	0.00	0.00	
12,300.00	90.45	359.77	11,175.57	1,198.10	-429.22	1,210.87	0.00	0.00	0.00	
12,400.00	90.45	359.77	11,174.78	1,298.10	-429.62	1,310.83	0.00	0.00	0.00	
12,500.00	90.45	359.77	11,173.99	1,398.10	-430.02	1,410.79	0.00	0.00	0.00	
12,600.00	90.45	359.77	11,173.20	1,498.09	-430.41	1,510.75	0.00	0.00	0.00	
12,700.00	90.45	359.77	11,172.41	1,598.09	-430.81	1,610.71	0.00	0.00	0.00	
12,800.00	90.45	359.77	11,171.62	1,698.08	-431.21	1,710.67	0.00	0.00	0.00	
12,900.00	90.45	359.77	11,170.83	1,798.08	-431.61	1,810.63	0.00	0.00	0.00	
13,000.00	90.45	359.77	11,170.04	1,898.08	-432.01	1,910.59	0.00	0.00	0.00	
13,100.00	90.45	359.77	11,169.25	1,998.07	-432.40	2,010.55	0.00	0.00	0.00	
13,200.00	90.45	359.77	11,168.46	2,098.07	-432.80	2,110.51	0.00	0.00	0.00	
13,300.00	90.45	359.77	11,167.67	2,198.06	-433.20	2,210.47	0.00	0.00	0.00	
13,400.00	90.45	359.77	11,166.88	2,298.06	-433.60	2,310.43	0.00	0.00	0.00	
13,500.00	90.45	359.77	11,166.10	2,398.06	-434.00	2,410.39	0.00	0.00	0.00	
13,600.00	90.45	359.77	11,165.31	2,498.05	-434.39	2,510.35	0.00	0.00	0.00	
13,700.00	90.45	359.77	11,164.52	2,598.05	-434.79	2,610.31	0.00	0.00	0.00	
13,800.00	90.45	359.77	11,163.73	2,698.05	-435.19	2,710.27	0.00	0.00	0.00	
13,900.00	90.45	359.77	11,162.94	2,798.04	-435.59	2,810.23	0.00	0.00	0.00	
14,000.00	90.45	359.77	11,162.15	2,898.04	-435.99	2,910.20	0.00	0.00	0.00	
14,100.00	90.45	359.77	11,161.36	2,998.03	-436.38	3,010.16	0.00	0.00	0.00	
14,200.00	90.45	359.77	11,160.57	3,098.03	-436.78	3,110.12	0.00	0.00	0.00	
14,300.00	90.45	359.77	11,159.78	3,198.03	-437.18	3,210.08	0.00	0.00	0.00	
14,400.00	90.45	359.77	11,158.99	3,298.02	-437.58	3,310.04	0.00	0.00	0.00	
14,500.00	90.45	359.77	11,158.20	3,398.02	-437.98	3,410.00	0.00	0.00	0.00	
14,600.00	90.45	359.77	11,157.41	3,498.01	-438.37	3,509.96	0.00	0.00	0.00	
14,700.00	90.45	359.77	11,156.62	3,598.01	-438.77	3,609.92	0.00	0.00	0.00	
14,800.00	90.45	359.77	11,155.83	3,698.01	-439.17	3,709.88	0.00	0.00	0.00	
14,900.00	90.45	359.77	11,155.04	3,798.00	-439.57	3,809.84	0.00	0.00	0.00	
15,000.00	90.45	359.77	11,154.25	3,898.00	-439.97	3,909.80	0.00	0.00	0.00	
15,100.00	90.45	359.77	11,153.46	3,997.99	-440.36	4,009.76	0.00	0.00	0.00	
15,200.00	90.45	359.77	11,152.67	4,097.99	-440.76	4,109.72	0.00	0.00	0.00	
15,300.00	90.45	359.77	11,151.88	4,197.99	-441.16	4,209.68	0.00	0.00	0.00	
15,400.00	90.45	359.77	11,151.09	4,297.98	-441.56	4,309.64	0.00	0.00	0.00	
15,500.00	90.45	359.77	11,150.30	4,397.98	-441.96	4,409.60	0.00	0.00	0.00	
15,600.00	90.45	359.77	11,149.51	4,497.97	-442.35	4,509.56	0.00	0.00	0.00	
15,700.00	90.45	359.77	11,148.72	4,597.97	-442.75	4,609.52	0.00	0.00	0.00	
15,800.00	90.45	359.77	11,147.93	4,697.97	-443.15	4,709.48	0.00	0.00	0.00	
15,900.00	90.45	359.77	11,147.14	4,797.96	-443.55	4,809.44	0.00	0.00	0.00	

# Oxy Inc.

## Planning Report

<b>Database:</b>	HOPSPP	<b>Local Co-ordinate Reference:</b>	Well Nimitz MDP1 13_1 Fed Com 312H
<b>Company:</b>	ENGINEERING DESIGNS	<b>TVD Reference:</b>	RKB=26.5' @ 3501.50ft
<b>Project:</b>	PRD NM DIRECTIONAL PLANS (NAD 1983)	<b>MD Reference:</b>	RKB=26.5' @ 3501.50ft
<b>Site:</b>	Nimitz MDP1 13_1	<b>North Reference:</b>	Grid
<b>Well:</b>	Nimitz MDP1 13_1 Fed Com 312H	<b>Survey Calculation Method:</b>	Minimum Curvature
<b>Wellbore:</b>	Wellbore #1		
<b>Design:</b>	Permitting Plan		

Planned Survey										
Measured Depth (ft)	Inclination (°)	Azimuth (°)	Vertical Depth (ft)	+N/-S (ft)	+E/-W (ft)	Vertical Section (ft)	Dogleg Rate (°/100ft)	Build Rate (°/100ft)	Turn Rate (°/100ft)	
16,000.00	90.45	359.77	11,146.35	4,897.96	-443.95	4,909.40	0.00	0.00	0.00	
16,100.00	90.45	359.77	11,145.56	4,997.96	-444.34	5,009.36	0.00	0.00	0.00	
16,200.00	90.45	359.77	11,144.77	5,097.95	-444.74	5,109.32	0.00	0.00	0.00	
16,300.00	90.45	359.77	11,143.98	5,197.95	-445.14	5,209.28	0.00	0.00	0.00	
16,400.00	90.45	359.77	11,143.19	5,297.94	-445.54	5,309.24	0.00	0.00	0.00	
16,500.00	90.45	359.77	11,142.40	5,397.94	-445.94	5,409.20	0.00	0.00	0.00	
16,600.00	90.45	359.77	11,141.61	5,497.94	-446.33	5,509.16	0.00	0.00	0.00	
16,700.00	90.45	359.77	11,140.82	5,597.93	-446.73	5,609.12	0.00	0.00	0.00	
16,800.00	90.45	359.77	11,140.03	5,697.93	-447.13	5,709.08	0.00	0.00	0.00	
16,900.00	90.45	359.77	11,139.24	5,797.92	-447.53	5,809.04	0.00	0.00	0.00	
17,000.00	90.45	359.77	11,138.45	5,897.92	-447.93	5,909.00	0.00	0.00	0.00	
17,100.00	90.45	359.77	11,137.66	5,997.92	-448.32	6,008.96	0.00	0.00	0.00	
17,200.00	90.45	359.77	11,136.87	6,097.91	-448.72	6,108.92	0.00	0.00	0.00	
17,300.00	90.45	359.77	11,136.08	6,197.91	-449.12	6,208.88	0.00	0.00	0.00	
17,400.00	90.45	359.77	11,135.29	6,297.90	-449.52	6,308.84	0.00	0.00	0.00	
17,500.00	90.45	359.77	11,134.51	6,397.90	-449.92	6,408.80	0.00	0.00	0.00	
17,600.00	90.45	359.77	11,133.72	6,497.90	-450.32	6,508.76	0.00	0.00	0.00	
17,700.00	90.45	359.77	11,132.93	6,597.89	-450.71	6,608.72	0.00	0.00	0.00	
17,800.00	90.45	359.77	11,132.14	6,697.89	-451.11	6,708.68	0.00	0.00	0.00	
17,900.00	90.45	359.77	11,131.35	6,797.88	-451.51	6,808.64	0.00	0.00	0.00	
18,000.00	90.45	359.77	11,130.56	6,897.88	-451.91	6,908.60	0.00	0.00	0.00	
18,100.00	90.45	359.77	11,129.77	6,997.88	-452.31	7,008.56	0.00	0.00	0.00	
18,200.00	90.45	359.77	11,128.98	7,097.87	-452.70	7,108.52	0.00	0.00	0.00	
18,300.00	90.45	359.77	11,128.19	7,197.87	-453.10	7,208.48	0.00	0.00	0.00	
18,400.00	90.45	359.77	11,127.40	7,297.87	-453.50	7,308.44	0.00	0.00	0.00	
18,500.00	90.45	359.77	11,126.61	7,397.86	-453.90	7,408.40	0.00	0.00	0.00	
18,600.00	90.45	359.77	11,125.82	7,497.86	-454.30	7,508.36	0.00	0.00	0.00	
18,700.00	90.45	359.77	11,125.03	7,597.85	-454.69	7,608.32	0.00	0.00	0.00	
18,800.00	90.45	359.77	11,124.24	7,697.85	-455.09	7,708.28	0.00	0.00	0.00	
18,900.00	90.45	359.77	11,123.45	7,797.85	-455.49	7,808.24	0.00	0.00	0.00	
19,000.00	90.45	359.77	11,122.66	7,897.84	-455.89	7,908.20	0.00	0.00	0.00	
19,100.00	90.45	359.77	11,121.87	7,997.84	-456.29	8,008.16	0.00	0.00	0.00	
19,200.00	90.45	359.77	11,121.08	8,097.83	-456.68	8,108.12	0.00	0.00	0.00	
19,300.00	90.45	359.77	11,120.29	8,197.83	-457.08	8,208.08	0.00	0.00	0.00	
19,400.00	90.45	359.77	11,119.50	8,297.83	-457.48	8,308.04	0.00	0.00	0.00	
19,500.00	90.45	359.77	11,118.71	8,397.82	-457.88	8,408.00	0.00	0.00	0.00	
19,600.00	90.45	359.77	11,117.92	8,497.82	-458.28	8,507.96	0.00	0.00	0.00	
19,700.00	90.45	359.77	11,117.13	8,597.81	-458.67	8,607.92	0.00	0.00	0.00	
19,800.00	90.45	359.77	11,116.34	8,697.81	-459.07	8,707.88	0.00	0.00	0.00	
19,900.00	90.45	359.77	11,115.55	8,797.81	-459.47	8,807.84	0.00	0.00	0.00	
20,000.00	90.45	359.77	11,114.76	8,897.80	-459.87	8,907.80	0.00	0.00	0.00	
20,100.00	90.45	359.77	11,113.97	8,997.80	-460.27	9,007.76	0.00	0.00	0.00	
20,200.00	90.45	359.77	11,113.18	9,097.79	-460.66	9,107.72	0.00	0.00	0.00	
20,300.00	90.45	359.77	11,112.39	9,197.79	-461.06	9,207.68	0.00	0.00	0.00	
20,400.00	90.45	359.77	11,111.60	9,297.79	-461.46	9,307.64	0.00	0.00	0.00	
20,500.00	90.45	359.77	11,110.81	9,397.78	-461.86	9,407.60	0.00	0.00	0.00	
20,600.00	90.45	359.77	11,110.02	9,497.78	-462.26	9,507.56	0.00	0.00	0.00	
20,700.00	90.45	359.77	11,109.23	9,597.78	-462.65	9,607.52	0.00	0.00	0.00	
20,800.00	90.45	359.77	11,108.44	9,697.77	-463.05	9,707.48	0.00	0.00	0.00	
20,900.00	90.45	359.77	11,107.65	9,797.77	-463.45	9,807.44	0.00	0.00	0.00	
21,000.00	90.45	359.77	11,106.86	9,897.76	-463.85	9,907.40	0.00	0.00	0.00	
21,100.00	90.45	359.77	11,106.07	9,997.76	-464.25	10,007.36	0.00	0.00	0.00	
21,200.00	90.45	359.77	11,105.28	10,097.76	-464.64	10,107.32	0.00	0.00	0.00	
21,300.00	90.45	359.77	11,104.49	10,197.75	-465.04	10,207.28	0.00	0.00	0.00	

# Oxy Inc.

## Planning Report

<b>Database:</b>	HOPSPP	<b>Local Co-ordinate Reference:</b>	Well Nimitz MDP1 13_1 Fed Com 312H
<b>Company:</b>	ENGINEERING DESIGNS	<b>TVD Reference:</b>	RKB=26.5' @ 3501.50ft
<b>Project:</b>	PRD NM DIRECTIONAL PLANS (NAD 1983)	<b>MD Reference:</b>	RKB=26.5' @ 3501.50ft
<b>Site:</b>	Nimitz MDP1 13_1	<b>North Reference:</b>	Grid
<b>Well:</b>	Nimitz MDP1 13_1 Fed Com 312H	<b>Survey Calculation Method:</b>	Minimum Curvature
<b>Wellbore:</b>	Wellbore #1		
<b>Design:</b>	Permitting Plan		

Planned Survey									
Measured Depth (ft)	Inclination (°)	Azimuth (°)	Vertical Depth (ft)	+N/-S (ft)	+E/-W (ft)	Vertical Section (ft)	Dogleg Rate (°/100ft)	Build Rate (°/100ft)	Turn Rate (°/100ft)
21,400.00	90.45	359.77	11,103.71	10,297.75	-465.44	10,307.24	0.00	0.00	0.00
21,500.00	90.45	359.77	11,102.92	10,397.74	-465.84	10,407.20	0.00	0.00	0.00
21,600.00	90.45	359.77	11,102.13	10,497.74	-466.24	10,507.16	0.00	0.00	0.00
21,700.00	90.45	359.77	11,101.34	10,597.74	-466.63	10,607.12	0.00	0.00	0.00
21,800.00	90.45	359.77	11,100.55	10,697.73	-467.03	10,707.08	0.00	0.00	0.00
21,900.00	90.45	359.77	11,099.76	10,797.73	-467.43	10,807.04	0.00	0.00	0.00
22,000.00	90.45	359.77	11,098.97	10,897.72	-467.83	10,907.00	0.00	0.00	0.00
22,100.00	90.45	359.77	11,098.18	10,997.72	-468.23	11,006.96	0.00	0.00	0.00
22,200.00	90.45	359.77	11,097.39	11,097.72	-468.62	11,106.92	0.00	0.00	0.00
22,300.00	90.45	359.77	11,096.60	11,197.71	-469.02	11,206.88	0.00	0.00	0.00
22,400.00	90.45	359.77	11,095.81	11,297.71	-469.42	11,306.84	0.00	0.00	0.00
22,500.00	90.45	359.77	11,095.02	11,397.71	-469.82	11,406.80	0.00	0.00	0.00
22,600.00	90.45	359.77	11,094.23	11,497.70	-470.22	11,506.76	0.00	0.00	0.00
22,700.00	90.45	359.77	11,093.44	11,597.70	-470.61	11,606.72	0.00	0.00	0.00
22,800.00	90.45	359.77	11,092.65	11,697.69	-471.01	11,706.68	0.00	0.00	0.00
22,900.00	90.45	359.77	11,091.86	11,797.69	-471.41	11,806.64	0.00	0.00	0.00
23,000.00	90.45	359.77	11,091.07	11,897.69	-471.81	11,906.60	0.00	0.00	0.00
23,100.00	90.45	359.77	11,090.28	11,997.68	-472.21	12,006.56	0.00	0.00	0.00
23,200.00	90.45	359.77	11,089.49	12,097.68	-472.61	12,106.52	0.00	0.00	0.00
23,300.00	90.45	359.77	11,088.70	12,197.67	-473.00	12,206.48	0.00	0.00	0.00
23,400.00	90.45	359.77	11,087.91	12,297.67	-473.40	12,306.44	0.00	0.00	0.00
23,500.00	90.45	359.77	11,087.12	12,397.67	-473.80	12,406.40	0.00	0.00	0.00
23,600.00	90.45	359.77	11,086.33	12,497.66	-474.20	12,506.36	0.00	0.00	0.00
23,700.00	90.45	359.77	11,085.54	12,597.66	-474.60	12,606.32	0.00	0.00	0.00
23,800.00	90.45	359.77	11,084.75	12,697.65	-474.99	12,706.28	0.00	0.00	0.00
23,900.00	90.45	359.77	11,083.96	12,797.65	-475.39	12,806.24	0.00	0.00	0.00
24,000.00	90.45	359.77	11,083.17	12,897.65	-475.79	12,906.20	0.00	0.00	0.00
24,100.00	90.45	359.77	11,082.38	12,997.64	-476.19	13,006.16	0.00	0.00	0.00
24,200.00	90.45	359.77	11,081.59	13,097.64	-476.59	13,106.12	0.00	0.00	0.00
24,300.00	90.45	359.77	11,080.80	13,197.63	-476.98	13,206.08	0.00	0.00	0.00
24,400.00	90.45	359.77	11,080.01	13,297.63	-477.38	13,306.05	0.00	0.00	0.00
24,500.00	90.45	359.77	11,079.22	13,397.63	-477.78	13,406.01	0.00	0.00	0.00
24,600.00	90.45	359.77	11,078.43	13,497.62	-478.18	13,505.97	0.00	0.00	0.00
24,700.00	90.45	359.77	11,077.64	13,597.62	-478.58	13,605.93	0.00	0.00	0.00
24,800.00	90.45	359.77	11,076.85	13,697.62	-478.97	13,705.89	0.00	0.00	0.00
24,900.00	90.45	359.77	11,076.06	13,797.61	-479.37	13,805.85	0.00	0.00	0.00
25,000.00	90.45	359.77	11,075.27	13,897.61	-479.77	13,905.81	0.00	0.00	0.00
25,100.00	90.45	359.77	11,074.48	13,997.60	-480.17	14,005.77	0.00	0.00	0.00
25,200.00	90.45	359.77	11,073.69	14,097.60	-480.57	14,105.73	0.00	0.00	0.00
25,300.00	90.45	359.77	11,072.91	14,197.60	-480.96	14,205.69	0.00	0.00	0.00
25,400.00	90.45	359.77	11,072.12	14,297.59	-481.36	14,305.65	0.00	0.00	0.00
25,500.00	90.45	359.77	11,071.33	14,397.59	-481.76	14,405.61	0.00	0.00	0.00
25,600.00	90.45	359.77	11,070.54	14,497.58	-482.16	14,505.57	0.00	0.00	0.00
25,700.00	90.45	359.77	11,069.75	14,597.58	-482.56	14,605.53	0.00	0.00	0.00
25,800.00	90.45	359.77	11,068.96	14,697.58	-482.95	14,705.49	0.00	0.00	0.00
25,900.00	90.45	359.77	11,068.17	14,797.57	-483.35	14,805.45	0.00	0.00	0.00
26,000.00	90.45	359.77	11,067.38	14,897.57	-483.75	14,905.41	0.00	0.00	0.00
26,100.00	90.45	359.77	11,066.59	14,997.56	-484.15	15,005.37	0.00	0.00	0.00
26,200.00	90.45	359.77	11,065.80	15,097.56	-484.55	15,105.33	0.00	0.00	0.00
26,300.00	90.45	359.77	11,065.01	15,197.56	-484.94	15,205.29	0.00	0.00	0.00
26,400.00	90.45	359.77	11,064.22	15,297.55	-485.34	15,305.25	0.00	0.00	0.00
26,500.00	90.45	359.77	11,063.43	15,397.55	-485.74	15,405.21	0.00	0.00	0.00
26,600.00	90.45	359.77	11,062.64	15,497.54	-486.14	15,505.17	0.00	0.00	0.00
26,700.00	90.45	359.77	11,061.85	15,597.54	-486.54	15,605.13	0.00	0.00	0.00

# Oxy Inc.

## Planning Report

<b>Database:</b>	HOPSP	<b>Local Co-ordinate Reference:</b>	Well Nimitz MDP1 13_1 Fed Com 312H
<b>Company:</b>	ENGINEERING DESIGNS	<b>TVD Reference:</b>	RKB=26.5' @ 3501.50ft
<b>Project:</b>	PRD NM DIRECTIONAL PLANS (NAD 1983)	<b>MD Reference:</b>	RKB=26.5' @ 3501.50ft
<b>Site:</b>	Nimitz MDP1 13_1	<b>North Reference:</b>	Grid
<b>Well:</b>	Nimitz MDP1 13_1 Fed Com 312H	<b>Survey Calculation Method:</b>	Minimum Curvature
<b>Wellbore:</b>	Wellbore #1		
<b>Design:</b>	Permitting Plan		

Planned Survey									
Measured Depth (ft)	Inclination (°)	Azimuth (°)	Vertical Depth (ft)	+N/-S (ft)	+E/-W (ft)	Vertical Section (ft)	Dogleg Rate (°/100ft)	Build Rate (°/100ft)	Turn Rate (°/100ft)
26,744.14	90.45	359.77	11,061.50	15,641.68	-486.71	15,649.25	0.00	0.00	0.00

Design Targets									
Target Name - hit/miss target - Shape	Dip Angle (°)	Dip Dir. (°)	TVD (ft)	+N/-S (ft)	+E/-W (ft)	Northing (usft)	Easting (usft)	Latitude	Longitude
PBHL (Nimitz MDP1 - plan hits target center - Point	0.00	0.00	11,061.50	15,641.68	-486.71	456,538.67	695,382.33	32° 15' 14.822461 N	103° 50' 6.067828
FTP (Nimitz MDP1 - plan misses target center by 203.16ft at 11110.45ft MD (11026.81 TVD, 49.10 N, -398.72 E) - Point	0.00	0.00	11,181.50	-80.15	-423.99	440,817.88	695,445.05	32° 12' 39.251734 N	103° 50' 6.186625

Formations						
Measured Depth (ft)	Vertical Depth (ft)	Name	Lithology	Dip (°)	Dip Direction (°)	
503.50	503.50	RUSTLER				
860.50	860.50	SALADO				
2,731.50	2,731.50	CASTILE				
4,175.50	4,175.50	LAMAR/DELAWARE				
4,205.50	4,205.50	BELL CANYON				
5,116.50	5,116.50	CHERRY CANYON				
6,338.50	6,338.50	BRUSHY CANYON				
8,050.50	8,050.50	BONE SPRING				
9,007.29	9,003.50	BONE SPRING 1ST				
9,762.64	9,747.50	BONE SPRING 2ND				
10,984.88	10,932.50	BONE SPRING 3RD				

Plan Annotations					
Measured Depth (ft)	Vertical Depth (ft)	Local Coordinates			
		+N/-S (ft)	+E/-W (ft)	Comment	
8,100.00	8,100.00	0.00	0.00	Build 1°/100'	
9,100.00	9,094.93	-32.06	-80.93	Hold 10° Tangent	
10,608.45	10,580.46	-128.53	-324.46	KOP, Build & Turn 10°/100'	
11,549.21	11,181.50	447.35	-426.23	Landing Point	
26,744.14	11,061.50	15,641.68	-486.71	TD at 26744.14' MD	



Project: PRD NM DIRECTIONAL PLANS (NAD 1983)  
 Site: Nimitz MDP1 13\_1  
 Well: Nimitz MDP1 13\_1 Fed Com 312H  
 Wellbore: Wellbore #1  
 Design: Permitting Plan

## PROJECT DETAILS: NM DIRECTIONAL PLANS (NAD 1983)

Geodetic System: US State Plane 1983  
 Datum: North American Datum 1983  
 Ellipsoid: GRS 1980  
 Zone: New Mexico Eastern Zone

System Datum: Mean Sea Level

WELL DETAILS: Nimitz MDP1 13\_1 Fed Com 312H

+N/-S	+E/-W	Northing	Easting	Latitude	Longitude
0.00	0.00	440898.02	3475.00 695869.01	32° 12' 40.025300 N	103° 50' 1.247551 W

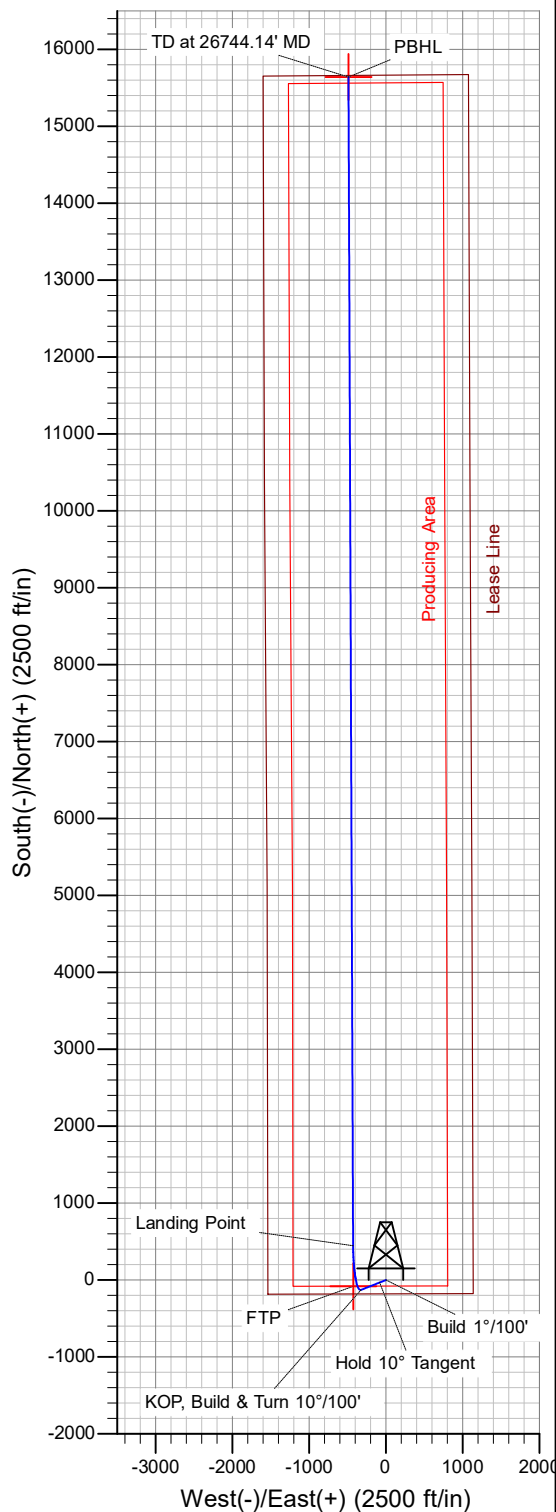
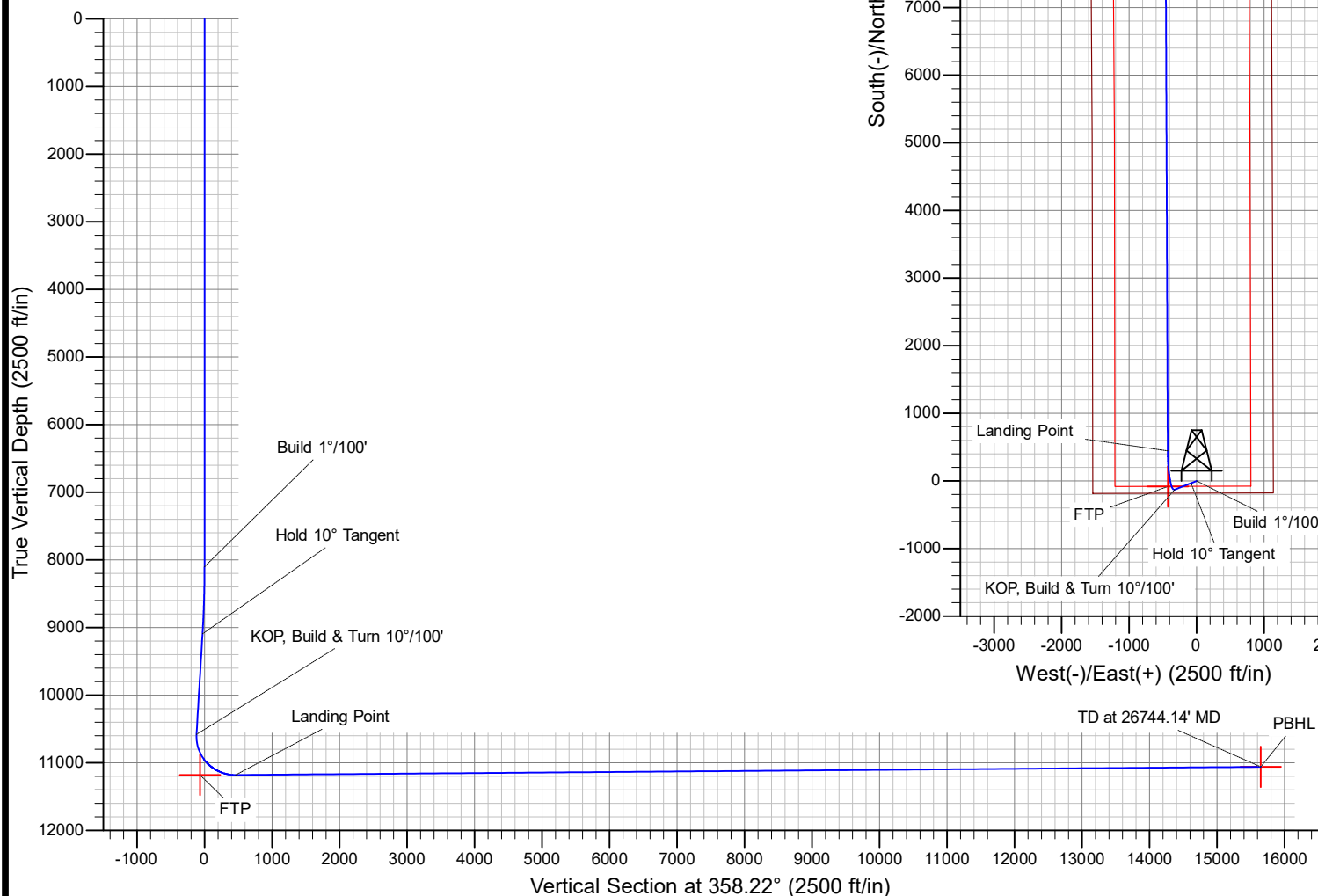
## SECTION DETAILS

MD	Inc	Azi	TVD	+N/-S	+E/-W	Dleg	TFace	Vsect	Annotation
0.00	0.00	0.00	0.00	0.00	0.00	0.00	0.00	0.00	
8100.00	0.00	0.00	8100.00	0.00	0.00	0.00	0.00	0.00	Build 1°/100'
9100.00	10.00	248.39	9094.93	-32.06	-80.93	1.00	248.39	-29.53	Hold 10° Tangent
10608.45	10.00	248.39	10580.46	-128.53	-324.46	0.00	0.00	-118.37	KOP, Build & Turn 10°/100'
11549.21	90.45	359.77	11181.50	447.35	-426.23	10.00	111.01	460.39	Landing Point
26744.14	90.45	359.77	11061.50	15641.68	-486.71	0.00	0.00	15649.25	TD at 26744.14' MD



Azimuths to Grid North  
 True North: -0.27°  
 Magnetic North: 6.40°

Magnetic Field  
 Strength: 47792.7nT  
 Dip Angle: 59.85°  
 Date: 7/13/2020  
 Model: HDGM\_FILE



**PECOS DISTRICT  
SURFACE USE  
CONDITIONS OF APPROVAL**

OPERATOR'S NAME:	Oxy USA Inc.
LEASE NO.:	NMNM-120897 & NMNM-136214
COUNTY:	Eddy

**Wells:**

Proposed Well Name	Surface Hole Location	Legal Location*	Surface Ownership
Nimitz MDP1 13-1 Fed Com 1H	211 FSL and 2,413 FEL	Section 13, Township 24 South, Range 30 East	BLM CFO
Nimitz MDP1 13-1 Fed Com 171H	800 FSL and 870 FWL		
Nimitz MDP1 13-1 Fed Com 172H	800 FSL and 940 FWL		
Nimitz MDP1 13-1 Fed Com 173H	195 FSL and 2,444 FEL		
Nimitz MDP1 13-1 Fed Com 174H	230 FSL and 350 FEL		
Nimitz MDP1 13-1 Fed Com 175H	230 FSL and 280 FEL		
Nimitz MDP1 13-1 Fed Com 311H	800 FSL and 905 FWL		
Nimitz MDP1 13-1 Fed Com 312H	179 FSL and 2,475 FEL		
Nimitz MDP1 13-1 Fed Com 313H	230 FSL and 315 FEL		

**TABLE OF CONTENTS**

Standard Conditions of Approval (COA) apply to this APD. If any deviations to these standards exist or special COAs are required, the section with the deviation or requirement will be checked below.

- ☐ **General Provisions**
- ☐ **Permit Expiration**
- ☐ **Archaeology, Paleontology, and Historical Sites**
- ☐ **Noxious Weeds**
- ☒ **Special Requirements**
  - Watershed
  - Range
- ☐ **Construction**
  - Notification
  - Topsoil
  - Closed Loop System
  - Federal Mineral Material Pits
  - Well Pads
  - Roads
- ☐ **Road Section Diagram**
- ☒ **Production (Post Drilling)**
  - Well Structures & Facilities
  - Pipelines
  - Electric Lines
- ☐ **Interim Reclamation**
- ☐ **Final Abandonment & Reclamation**



## **I. GENERAL PROVISIONS**

The approval of the Application For Permit To Drill (APD) is in compliance with all applicable laws and regulations: 43 Code of Federal Regulations 3160, the lease terms, Onshore Oil and Gas Orders, Notices To Lessees, New Mexico Oil Conservation Division (NMOCD) Rules, National Historical Preservation Act As Amended, and instructions and orders of the Authorized Officer. Any request for a variance shall be submitted to the Authorized Officer on Form 3160-5, Sundry Notices and Report on Wells.

## **II. PERMIT EXPIRATION**

If the permit terminates prior to drilling and drilling cannot be commenced within 60 days after expiration, an operator is required to submit Form 3160-5, Sundry Notices and Reports on Wells, requesting surface reclamation requirements for any surface disturbance. However, if the operator will be able to initiate drilling within 60 days after the expiration of the permit, the operator must have set the conductor pipe in order to allow for an extension of 60 days beyond the expiration date of the APD. (Filing of a Sundry Notice is required for this 60 day extension.)

## **III. ARCHAEOLOGICAL, PALEONTOLOGY & HISTORICAL SITES**

Any cultural resource (historic or prehistoric site or object) discovered by the holder, or any person working on the holder's behalf, on public or Federal land shall be immediately reported to the Authorized Officer. The holder shall suspend all operations in the immediate area of such discovery until written authorization to proceed is issued by the Authorized Officer. An evaluation of the discovery will be made by the Authorized Officer to determine appropriate actions to prevent the loss of significant cultural or scientific values. The holder will be responsible for the cost of evaluation and any decision as to the proper mitigation measures will be made by the Authorized Officer after consulting with the holder.

OR

If the entire project is covered under the Permian Basin Programmatic Agreement (cultural resources only):

The proponent has contributed funds commensurate to the undertaking into an account for offsite mitigation. Participation in the PA serves as mitigation for the effects of this project on cultural resources. If any human skeletal remains, funerary objects, sacred objects, or objects of cultural patrimony are discovered at any time during construction, all construction activities shall halt and the BLM will be notified as soon as possible within 24 hours. Work shall not resume until a Notice to Proceed is issued by the BLM. See information below discussing NAGPRA.

If the proposed project is split between a Class III inventory and a Permian Basin Programmatic Agreement contribution, the portion of the project covered under Class III inventory should default to the first paragraph stipulations.

The holder is hereby obligated to comply with procedures established in the Native American Graves Protection and Repatriation Act (NAGPRA) to protect such cultural items as human remains, associated funerary objects, sacred objects, and objects of cultural patrimony discovered inadvertently during the course of project implementation. In the event that any of the cultural items listed above are discovered during the course of project work, the proponent shall immediately halt the disturbance and contact the BLM within 24 hours for instructions. The proponent or initiator of any project shall be held responsible for protecting, evaluating, reporting, excavating, treating, and disposing of these cultural items according to the procedures established by the BLM in consultation with Indian Tribes."

Any paleontological resource (historic or prehistoric site or object) discovered by the holder, or any person working on the holder's behalf, on public or Federal land shall be immediately reported to the Authorized Officer. The holder shall suspend all operations in the immediate area of such discovery until written authorization to proceed is issued by the Authorized Officer. An evaluation of the discovery will be made by the Authorized Officer to determine appropriate actions to prevent the loss of significant cultural or scientific values. The holder will be responsible for the cost of evaluation and any decision as to the proper mitigation measures will be made by the Authorized Officer after consulting with the holder.

#### **IV. NOXIOUS WEEDS**

The operator shall be held responsible if noxious weeds become established within the areas of operations. Weed control shall be required on the disturbed land where noxious weeds exist, which includes the roads, pads, associated pipeline corridor, and adjacent land affected by the establishment of weeds due to this action. The operator shall consult with the Authorized Officer for acceptable weed control methods, which include following EPA and BLM requirements and policies.

#### **SPECIAL REQUIREMENT(S)**

##### **Watershed:**

The entire well pad(s) will be bermed to prevent oil, salt, and other chemical contaminants from leaving the well pad. The compacted berm shall be constructed at a minimum of 12 inches with impermeable mineral material (e.g. caliche). Topsoil shall not be used to construct the berm. No water flow from the uphill side(s) of the pad shall be allowed to enter the well pad. The integrity of the berm shall be maintained around the surfaced pad throughout the life of the well and around the downsized pad after interim reclamation has been completed. Any water erosion that may occur due to the construction of the well pad during the life of the well will be quickly corrected and proper measures will be taken to prevent future erosion. Stockpiling of topsoil is required. The topsoil shall be stockpiled in an appropriate location to prevent loss of soil due to water or wind erosion and not used for berming or erosion control. If fluid collects within the bermed area, the fluid must be vacuumed into a safe container and disposed of properly at a state approved facility.

##### **TANK BATTERY:**

Tank battery locations will be lined and bermed. A 20 mil permanent liner will be installed with a 4 oz. felt backing to prevent tears or punctures. Tank battery berms must be large enough to contain 1 ½ times the content of the largest tank or 24 hour production, whichever is greater. Automatic shut off, check valves, or similar systems will be installed for tanks to minimize the effects of catastrophic line failures used in production or drilling.

##### **BURIED/SURFACE LINE(S):**

When crossing ephemeral drainages the pipeline(s) will be buried to a minimum depth of 48 inches from the top of pipe to ground level. Erosion control methods such as gabions and/or rock aprons should be placed on both up and downstream sides of the pipeline crossing. In addition, curled (weed free) wood/straw fiber wattles/logs and/or silt fences should be placed on the downstream side for sediment control during construction and maintained until soils and vegetation have stabilized. Water bars should be placed within the ROW to divert and dissipate surface runoff. A pipeline access road is not permitted to cross these ephemeral drainages. Traffic should be diverted to a preexisting route. Additional seeding may be required in floodplains and drainages to restore energy dissipating vegetation.

Prior to pipeline installation/construction a leak detection plan will be developed. The method(s) could incorporate gauges to detect pressure drops, situating valves and lines so they can be visually inspected periodically or installing electronic sensors to alarm when a leak is present.

The leak detection plan will incorporate an automatic shut off system that will be installed for proposed pipelines to minimize the effects of an undesirable event.

**ELECTRIC LINE(S):**

Any water erosion that may occur due to the construction of overhead electric line and during the life of the power line will be quickly corrected and proper measures will be taken to prevent future erosion. A power pole should not be placed in drainages, playas, wetlands, riparian areas, or floodplains and must span across the features at a distance away that would not promote further erosion.

**Range:****Cattleguards**

Where a permanent cattlegaurd is approved, an appropriately sized cattleguard(s) sufficient to carry out the project shall be installed and maintained at fence crossing(s). Any existing cattleguard(s) on the access road shall be repaired or replaced if they are damaged or have deteriorated beyond practical use. The operator shall be responsible for the condition of the existing cattleguard(s) that are in place and are utilized during lease operations. A gate shall be constructed on one side of the cattleguard and fastened securely to H-braces.

**Fence Requirement**

Where entry granted across a fence line, the fence must be braced and tied off on both sides of the passageway prior to cutting. Once the work is completed, the fence will be restored to its prior condition, or better. The operator shall notify the private surface landowner or the grazing allotment holder prior to crossing any fence(s).

**Livestock Watering Requirement**

Any damage to structures that provide water to livestock throughout the life of the well, caused by operations from the well site, must be immediately corrected by the operator. The operator must notify the BLM office (575-234-5972) and the private surface landowner or the grazing allotment holder if any damage occurs to structures that provide water to livestock.

**V. CONSTRUCTION****A. NOTIFICATION**

The BLM shall administer compliance and monitor construction of the access road and well pad. Notify the Carlsbad Field Office at (575) 234-5909 at least 3 working days prior to commencing construction of the access road and/or well pad.

When construction operations are being conducted on this well, the operator shall have the approved APD and Conditions of Approval (COA) on the well site and they shall be made available upon request by the Authorized Officer.

**B. TOPSOIL**

The operator shall strip the top portion of the soil (root zone) from the entire well pad area and stockpile the topsoil along the edge of the well pad as depicted in the APD. The root zone is typically six (6) inches in depth. All the stockpiled topsoil will be redistributed over the interim reclamation areas. Topsoil shall not be used for berming the pad or facilities. For final reclamation, the topsoil shall be spread over the entire pad area for seeding preparation.

Other subsoil (below six inches) stockpiles must be completely segregated from the topsoil stockpile. Large rocks or subsoil clods (not evident in the surrounding terrain) must be buried within the approved area for interim and final reclamation.

**C. CLOSED LOOP SYSTEM**

Tanks are required for drilling operations: No Pits.

The operator shall properly dispose of drilling contents at an authorized disposal site.

**D. FEDERAL MINERAL MATERIALS PIT**

Payment shall be made to the BLM prior to removal of any federal mineral materials. Call the Carlsbad Field Office at (575) 234-5972.

**E. WELL PAD SURFACING**

Surfacing of the well pad is not required.

If the operator elects to surface the well pad, the surfacing material may be required to be removed at the time of reclamation. The well pad shall be constructed in a manner which creates the smallest possible surface disturbance, consistent with safety and operational needs.

**F. EXCLOSURE FENCING (CELLARS & PITS)****Exclosure Fencing**

The operator will install and maintain exclosure fencing for all open well cellars to prevent access to public, livestock, and large forms of wildlife before and after drilling operations until the pit is free of fluids and the operator initiates backfilling. (For examples of exclosure fencing design, refer to BLM's Oil and Gas Gold Book, Exclosure Fence Illustrations, Figure 1, Page 18.)

**G. ON LEASE ACCESS ROADS****Road Width**

The access road shall have a driving surface that creates the smallest possible surface disturbance and does not exceed fourteen (14) feet in width. The maximum width of surface disturbance, when constructing the access road, shall not exceed twenty-five (25) feet.

**Surfacing**

Surfacing material is not required on the new access road driving surface. If the operator elects to surface the new access road or pad, the surfacing material may be required to be removed at the time of reclamation.

Where possible, no improvements should be made on the unsurfaced access road other than to remove vegetation as necessary, road irregularities, safety issues, or to fill low areas that may sustain standing water.

The Authorized Officer reserves the right to require surfacing of any portion of the access road at any time deemed necessary. Surfacing may be required in the event the road deteriorates, erodes, road traffic increases, or it is determined to be beneficial for future field development. The surfacing depth and type of material will be determined at the time of notification.

**Crowning**

Crowning shall be done on the access road driving surface. The road crown shall have a grade of approximately 2% (i.e., a 1" crown on a 14' wide road). The road shall conform to Figure 1; cross section and plans for typical road construction.

**Ditching**

Ditching shall be required on both sides of the road.

### Turnouts

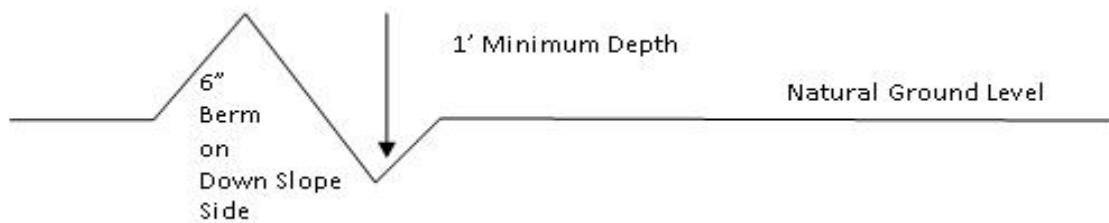
Vehicle turnouts shall be constructed on the road. Turnouts shall be intervisible with interval spacing distance less than 1000 feet. Turnouts shall conform to Figure 1; cross section and plans for typical road construction.

### Drainage

Drainage control systems shall be constructed on the entire length of road (e.g. ditches, sidehill outsloping and insloping, lead-off ditches, culvert installation, and low water crossings).

A typical lead-off ditch has a minimum depth of 1 foot below and a berm of 6 inches above natural ground level. The berm shall be on the down-slope side of the lead-off ditch.

**Cross Section of a Typical Lead-off Ditch**



All lead-off ditches shall be graded to drain water with a 1 percent minimum to 3 percent maximum ditch slope. The spacing interval are variable for lead-off ditches and shall be determined according to the formula for spacing intervals of lead-off ditches, but may be amended depending upon existing soil types and centerline road slope (in %);

### Formula for Spacing Interval of Lead-off Ditches

Example - On a 4% road slope that is 400 feet long, the water flow shall drain water into a lead-off ditch. Spacing interval shall be determined by the following formula:

$$400 \text{ foot road with } 4\% \text{ road slope: } \frac{400'}{4\%} + 100' = 200' \text{ lead-off ditch interval}$$

### Cattle guards

An appropriately sized cattle guard sufficient to carry out the project shall be installed and maintained at fence/road crossings. Any existing cattle guards on the access road route shall be repaired or replaced if they are damaged or have deteriorated beyond practical use. The operator shall be responsible for the condition of the existing cattle guards that are in place and are utilized during lease operations.

### Fence Requirement

Where entry is granted across a fence line, the fence shall be braced and tied off on both sides of the passageway prior to cutting. The operator shall notify the private surface landowner or the grazing allotment holder prior to crossing any fences.

**Construction Steps**

1. Salvage topsoil
2. Construct road

3. Redistribute topsoil
4. Revegetate slopes

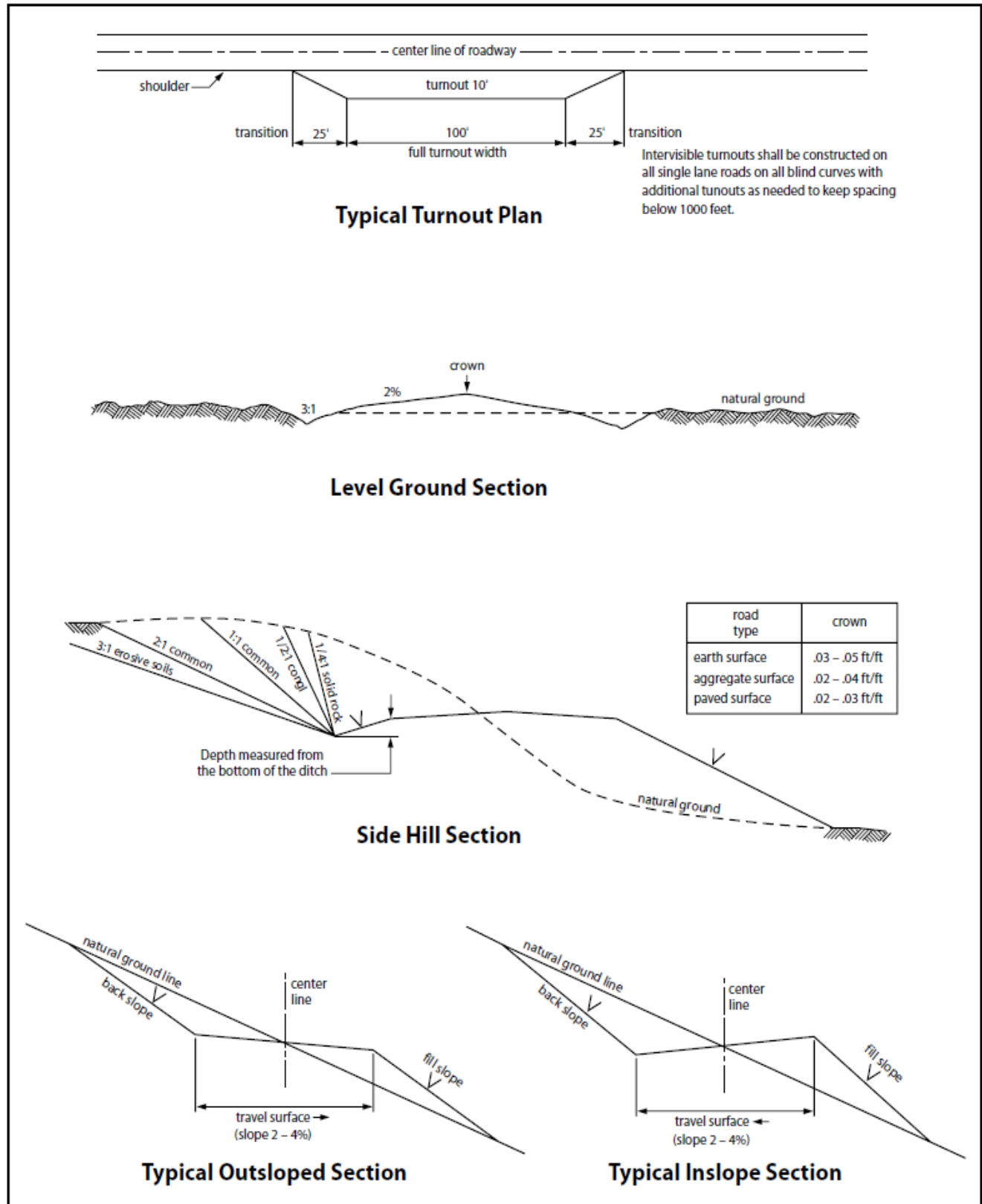


Figure 1. Cross-sections and plans for typical road sections representative of BLM resource or FS local and higher-class roads.

Public access on this road shall not be restricted by the operator without specific written approval granted by the Authorized Officer.

## VI. PRODUCTION (POST DRILLING)

### A. WELL STRUCTURES & FACILITIES

#### Placement of Production Facilities

Production facilities should be placed on the well pad to allow for maximum interim recontouring and revegetation of the well location.

#### Exclosure Netting (Open-top Tanks)

Immediately following active drilling or completion operations, the operator will take actions necessary to prevent wildlife and livestock access, including avian wildlife, to all open-topped tanks that contain or have the potential to contain salinity sufficient to cause harm to wildlife or livestock, hydrocarbons, or Resource Conservation and Recovery Act of 1976-exempt hazardous substances. At a minimum, the operator will net, screen, or cover open-topped tanks to exclude wildlife and livestock and prevent mortality. If the operator uses netting, the operator will cover and secure the open portion of the tank to prevent wildlife entry. The operator will net, screen, or cover the tanks until the operator removes the tanks from the location or the tanks no longer contain substances that could be harmful to wildlife or livestock. Use a maximum netting mesh size of 1 ½ inches. The netting must not be in contact with fluids and must not have holes or gaps.

#### Chemical and Fuel Secondary Containment and Exclosure Screening

The operator will prevent all hazardous, poisonous, flammable, and toxic substances from coming into contact with soil and water. At a minimum, the operator will install and maintain an impervious secondary containment system for any tank or barrel containing hazardous, poisonous, flammable, or toxic substances sufficient to contain the contents of the tank or barrel and any drips, leaks, and anticipated precipitation. The operator will dispose of fluids within the containment system that do not meet applicable state or U. S. Environmental Protection Agency livestock water standards in accordance with state law; the operator must not drain the fluids to the soil or ground. The operator will design, construct, and maintain all secondary containment systems to prevent wildlife and livestock exposure to harmful substances. At a minimum, the operator will install effective wildlife and livestock exclosure systems such as fencing, netting, expanded metal mesh, lids, and grate covers. Use a maximum netting mesh size of 1 ½ inches.

#### Open-Vent Exhaust Stack Exclosures

The operator will construct, modify, equip, and maintain all open-vent exhaust stacks on production equipment to prevent birds and bats from entering, and to discourage perching, roosting, and nesting. (*Recommended exclosure structures on open-vent exhaust stacks are in the shape of a cone.*) Production equipment includes, but may not be limited to, tanks, heater-treaters, separators, dehydrators, flare stacks, in-line units, and compressor mufflers.

#### Containment Structures

Proposed production facilities such as storage tanks and other vessels will have a secondary containment structure that is constructed to hold the capacity of 1.5 times the largest tank, plus freeboard to account for precipitation, unless more stringent protective requirements are deemed necessary.

#### Painting Requirement

All above-ground structures including meter housing that are not subject to safety requirements shall be painted a flat non-reflective paint color, **Shale Green** from the BLM Standard Environmental Color Chart (CC-001: June 2008).



**B. PIPELINES**

- The BLM, Carlsbad Field Office, will be informed immediately if any subsurface drainage channels, passages, or voids are intersected by trenching, and no pipe will be laid in the trench at that point until clearance has been issued by the Authorized Officer.
- If a void is encountered alignments may be rerouted to avoid the karst feature and lessen; the potential of subsidence or collapse of karst features, buildup of toxic or combustible gas, or other possible impacts to cave and karst resources from the buried pipeline.
- Special restoration stipulations or realignment may be required at such intersections, if any.
- A leak detection plan **will be submitted to the BLM Carlsbad Field Office for approval** prior to pipeline installation. The method could incorporate gauges to detect pressure drops, siting valves and lines so they can be visually inspected periodically or installing electronic sensors to alarm when a leak is present. The leak detection plan will incorporate an automatic shut off system that will be installed for proposed pipelines to minimize the effects of an undesirable event.
- Regular monitoring is required to quickly identify leaks for their immediate and proper treatment.
- All spills or leaks will be reported to the BLM immediately for their immediate and proper treatment.

**BURIED PIPELINE STIPULATIONS**

A copy of the application (Grant, APD, or Sundry Notice) and attachments, including conditions of approval, survey plat and/or map, will be on location during construction. BLM personnel may request to you a copy of your permit during construction to ensure compliance with all stipulations.

Holder agrees to comply with the following stipulations to the satisfaction of the Authorized Officer:

1. The Holder shall indemnify the United States against any liability for damage to life or property arising from the occupancy or use of public lands under this grant.
2. The Holder shall comply with all applicable Federal laws and regulations existing or hereafter enacted or promulgated. In any event, the holder shall comply with the Toxic Substances Control Act of 1976 as amended, 15 USC 2601 et seq. (1982) with regards to any toxic substances that are used, generated by or stored on the right-of-way or on facilities authorized under this right-of-way grant. (See 40 CFR Part 702-799 and especially, provisions on polychlorinated biphenyls, 40 CFR 761.1-761.193.) Additionally, any release of toxic substances (leaks, spills, etc.) in excess of the reportable quantity established by 40 CFR Part 117 shall be reported as required by the Comprehensive Environmental Response, Compensation, and Liability Act, section 102b. A copy of any report required or requested by any Federal agency or State government as a result of a reportable release or spill of any toxic substances shall be furnished to the authorized officer concurrent with the filing of the reports to the involved Federal agency or State government.



3. The holder agrees to indemnify the United States against any liability arising from the release of any hazardous substance or hazardous waste (as these terms are defined in the Comprehensive Environmental Response, Compensation and Liability Act of 1980, 42 U.S.C. 9601, et seq. or the Resource Conservation and Recovery Act, 42 U.S.C.6901, et seq.) on the Right-of-Way (unless the release or threatened release is wholly unrelated to the Right-of-Way holder's activity on the Right-of-Way), or resulting from the activity of the Right-of-Way holder on the Right-of-Way. This agreement applies without regard to whether a release is caused by the holder, its agent, or unrelated third parties.

4. If, during any phase of the construction, operation, maintenance, or termination of the pipeline, any oil or other pollutant should be discharged from the pipeline system, impacting Federal lands, the control and total removal, disposal, and cleaning up of such oil or other pollutant, wherever found, shall be the responsibility of holder, regardless of fault. Upon failure of holder to control, dispose of, or clean up such discharge on or affecting Federal lands, or to repair all damages resulting therefrom, on the Federal lands, the Authorized Officer may take such measures as he deems necessary to control and clean up the discharge and restore the area, including where appropriate, the aquatic environment and fish and wildlife habitats, at the full expense of the holder. Such action by the Authorized Officer shall not relieve holder of any responsibility as provided herein.

5. All construction and maintenance activity will be confined to the authorized right-of-way.

6. The pipeline will be buried with a minimum cover of 36 inches between the top of the pipe and ground level.

7. The maximum allowable disturbance for construction in this right-of-way will be 30 feet:

- Blading of vegetation within the right-of-way will be allowed: maximum width of blading operations will not exceed 20 feet. The trench is included in this area. (*Blading is defined as the complete removal of brush and ground vegetation.*)
- Clearing of brush species within the right-of-way will be allowed: maximum width of clearing operations will not exceed 30 feet. The trench and bladed area are included in this area. (*Clearing is defined as the removal of brush while leaving ground vegetation (grasses, weeds, etc.) intact. Clearing is best accomplished by holding the blade 4 to 6 inches above the ground surface.*)
- The remaining area of the right-of-way (if any) shall only be disturbed by compressing the vegetation. (*Compressing can be caused by vehicle tires, placement of equipment, etc.*)

8. The holder shall stockpile an adequate amount of topsoil where blading is allowed. The topsoil to be stripped is approximately 6 inches in depth. The topsoil will be segregated from other spoil piles from trench construction. The topsoil will be evenly distributed over the bladed area for the preparation of seeding.

9. The holder shall minimize disturbance to existing fences and other improvements on public lands. The holder is required to promptly repair improvements to at least their former state. Functional use of these improvements will be maintained at all times. The holder will contact the owner of any improvements prior to disturbing them. When necessary to pass through a fence

line, the fence shall be braced on both sides of the passageway prior to cutting of the fence. No permanent gates will be allowed unless approved by the Authorized Officer.

10. Vegetation, soil, and rocks left as a result of construction or maintenance activity will be randomly scattered on this right-of-way and will not be left in rows, piles, or berms, unless otherwise approved by the Authorized Officer. The entire right-of-way shall be recontoured to match the surrounding landscape. The backfilled soil shall be compacted and a 6 inch berm will be left over the ditch line to allow for settling back to grade.

11. In those areas where erosion control structures are required to stabilize soil conditions, the holder will install such structures as are suitable for the specific soil conditions being encountered and which are in accordance with sound resource management practices.

12. The holder will reseed all disturbed areas. Seeding will be done according to the attached seeding requirements, using the following seed mix.

<input type="checkbox"/> seed mixture 1	<input type="checkbox"/> seed mixture 3
<input checked="" type="checkbox"/> seed mixture 2	<input type="checkbox"/> seed mixture 4
<input type="checkbox"/> seed mixture 2/LPC	<input type="checkbox"/> Aplomado Falcon Mixture

13. All above-ground structures not subject to safety requirements shall be painted by the holder to blend with the natural color of the landscape. The paint used shall be color which simulates "Standard Environmental Colors" – **Shale Green**, Munsell Soil Color No. 5Y 4/2.

14. The pipeline will be identified by signs at the point of origin and completion of the right-of-way and at all road crossings. At a minimum, signs will state the holder's name, BLM serial number, and the product being transported. All signs and information thereon will be posted in a permanent, conspicuous manner, and will be maintained in a legible condition for the life of the pipeline.

15. The holder shall not use the pipeline route as a road for purposes other than routine maintenance as determined necessary by the Authorized Officer in consultation with the holder before maintenance begins. The holder will take whatever steps are necessary to ensure that the pipeline route is not used as a roadway. As determined necessary during the life of the pipeline, the Authorized Officer may ask the holder to construct temporary deterrence structures.

16. Any cultural resource (historic or prehistoric site or object) discovered by the holder, or any person working on the holder's behalf, on public or Federal land shall be immediately reported to the Authorized Officer. The holder shall suspend all operations in the immediate area of such discovery until written authorization to proceed is issued by the Authorized Officer. An evaluation of the discovery will be made by the Authorized Officer to determine appropriate actions to prevent the loss of significant cultural or scientific values. The holder will be responsible for the cost of evaluation and any decision as to the proper mitigation measures will be made by the Authorized Officer after consulting with the holder.

OR

If the entire project is covered under the Permian Basin Programmatic Agreement (cultural resources only):

The proponent has contributed funds commensurate to the undertaking into an account for offsite mitigation. Participation in the PA serves as mitigation for the effects of this project on cultural resources. If any human skeletal remains, funerary objects, sacred objects, or objects of cultural patrimony are discovered at any time during construction, all construction activities shall halt and the BLM will be notified as soon as possible within 24 hours. Work shall not resume until a Notice to Proceed is issued by the BLM. See Stipulation 17 for more information.

If the proposed project is split between a Class III inventory and a Permian Basin Programmatic Agreement contribution, the portion of the project covered under Class III inventory should default to the first paragraph stipulations.

17. The holder is hereby obligated to comply with procedures established in the Native American Graves Protection and Repatriation Act (NAGPRA) to protect such cultural items as human remains, associated funerary objects, sacred objects, and objects of cultural patrimony discovered inadvertently during the course of project implementation. In the event that any of the cultural items listed above are discovered during the course of project work, the proponent shall immediately halt the disturbance and contact the BLM within 24 hours for instructions. The proponent or initiator of any project shall be held responsible for protecting, evaluating, reporting, excavating, treating, and disposing of these cultural items according to the procedures established by the BLM in consultation with Indian Tribes."

18. Any paleontological resource (historic or prehistoric site or object) discovered by the holder, or any person working on the holder's behalf, on public or Federal land shall be immediately reported to the Authorized Officer. The holder shall suspend all operations in the immediate area of such discovery until written authorization to proceed is issued by the Authorized Officer. An evaluation of the discovery will be made by the Authorized Officer to determine appropriate actions to prevent the loss of significant cultural or scientific values. The holder will be responsible for the cost of evaluation and any decision as to the proper mitigation measures will be made by the Authorized Officer after consulting with the holder.

19. The operator shall be held responsible if noxious weeds become established within the areas of operations. Weed control shall be required on the disturbed land where noxious weeds exist, which includes associated roads, pipeline corridor and adjacent land affected by the establishment of weeds due to this action. The operator shall consult with the Authorized Officer for acceptable weed control methods, which include following EPA and BLM requirements and policies.

20. Escape Ramps - The operator will construct and maintain pipeline/utility trenches [that are not otherwise fenced, screened, or netted] to prevent livestock, wildlife, and humans from becoming entrapped. At a minimum, the operator will construct and maintain escape ramps, ladders, or other methods of avian and terrestrial wildlife escape in the trenches according to the following criteria:

- a. Any trench left open for eight (8) hours or less is not required to have escape ramps; however, before the trench is backfilled, the contractor/operator shall inspect the trench for wildlife, remove all trapped wildlife, and release them at least 100 yards from the trench.
- b. For trenches left open for eight (8) hours or more, earthen escape ramps (built at no more than a 30 degree slope and spaced no more than 500 feet apart) shall be placed in the trench.

#### STANDARD STIPULATIONS FOR SURFACE INSTALLED PIPELINES

**A copy of the Grant and attachments, including stipulations, survey plat(s) and/or map(s), shall be on location during construction. BLM personnel may request to review a copy of your permit during construction to ensure compliance with all stipulations.**

Holder agrees to comply with the following stipulations to the satisfaction of the Authorized Officer:

1. Holder shall indemnify the United States against any liability for damage to life or property arising from the occupancy or use of public lands under this grant.
2. Holder shall comply with all applicable Federal laws and regulations existing or hereafter enacted or promulgated. In any event, Holder shall comply with the Toxic Substances Control Act of 1976 as amended, 15 USC § 2601 *et seq.* (1982) with regard to any toxic substances that are used, generated by or stored on the right-of-way or on facilities authorized under this right-of-way grant (see 40 CFR, Part 702-799 and in particular, provisions on polychlorinated biphenyls, 40 CFR 761.1-761.193). Additionally, any release of toxic substances (leaks, spills, etc.) in excess of the reportable quantity established by 40 CFR, Part 117 shall be reported as required by the Comprehensive Environmental Response, Compensation, and Liability Act, section 102b. A copy of any report required or requested by any Federal agency or State government as a result of a reportable release or spill of any toxic substances shall be furnished to the Authorized Officer concurrent with the filing of the reports to the involved Federal agency or State government.
3. Holder agrees to indemnify the United States against any liability arising from the release of any hazardous substance or hazardous waste (as these terms are defined in the Comprehensive Environmental Response, Compensation and Liability Act of 1980, 42 U.S.C. § 9601, *et seq.* or the Resource Conservation and Recovery Act, 42 U.S.C. 6901, *et seq.*) on the Right-of-Way (unless the release or threatened release is wholly unrelated to activity of the Right-of-Way Holder's activity on the Right-of-Way), or resulting from the activity of the Right-of-Way Holder on the Right-of-Way. This provision applies without regard to whether a release is caused by Holder, its agent, or unrelated third parties.
4. Holder shall be liable for damage or injury to the United States to the extent provided by 43 CFR Sec. 2883.1-4. Holder shall be held to a standard of strict liability for damage or injury to the United States resulting from pipe rupture, fire, or spills caused or substantially aggravated by any of the following within the right-of-way or permit area:
  - a. Activities of Holder including, but not limited to: construction, operation, maintenance, and termination of the facility;
  - b. Activities of other parties including, but not limited to:
    - (1) Land clearing
    - (2) Earth-disturbing and earth-moving work
    - (3) Blasting
    - (4) Vandalism and sabotage;
  - c. Acts of God.The maximum limitation for such strict liability damages shall not exceed one million dollars

(\$1,000,000) for any one event, and any liability in excess of such amount shall be determined by the ordinary rules of negligence of the jurisdiction in which the damage or injury occurred.

This section shall not impose strict liability for damage or injury resulting primarily from an act of war or from the negligent acts or omissions of the United States.

5. If, during any phase of the construction, operation, maintenance, or termination of the pipeline, any oil, salt water, or other pollutant should be discharged from the pipeline system, impacting Federal lands, the control and total removal, disposal, and cleaning up of such oil, salt water, or other pollutant, wherever found, shall be the responsibility of Holder, regardless of fault. Upon failure of Holder to control, dispose of, or clean up such discharge on or affecting Federal lands, or to repair all damages resulting therefrom, on the Federal lands, the Authorized Officer may take such measures as he/she deems necessary to control and clean up the discharge and restore the area, including, where appropriate, the aquatic environment and fish and wildlife habitats, at the full expense of Holder. Such action by the Authorized Officer shall not relieve Holder of any responsibility as provided herein.

6. All construction and maintenance activity shall be confined to the authorized right-of-way width of 30 feet. If the pipeline route follows an existing road or buried pipeline right-of-way, the surface pipeline shall be installed no farther than 10 feet from the edge of the road or buried pipeline right-of-way. If existing surface pipelines prevent this distance, the proposed surface pipeline shall be installed immediately adjacent to the outer surface pipeline. All construction and maintenance activity shall be confined to existing roads or right-of-ways.

7. No blading or clearing of any vegetation shall be allowed unless approved in writing by the Authorized Officer.

8. Holder shall install the pipeline on the surface in such a manner that will minimize suspension of the pipeline across low areas in the terrain. In hummocky or dune areas, the pipeline shall be "snaked" around hummocks and dunes rather than suspended across these features.

9. The pipeline shall be buried with a minimum of 6 inches under all roads, "two-tracks," and trails. Burial of the pipe will continue for 20 feet on each side of each crossing. The condition of the road, upon completion of construction, shall be returned to at least its former state with no bumps or dips remaining in the road surface.

10. The holder shall minimize disturbance to existing fences and other improvements on public lands. The holder is required to promptly repair improvements to at least their former state. Functional use of these improvements will be maintained at all times. The holder will contact the owner of any improvements prior to disturbing them. When necessary to pass through a fence line, the fence shall be braced on both sides of the passageway prior to cutting of the fence. No permanent gates will be allowed unless approved by the Authorized Officer.

11. In those areas where erosion control structures are required to stabilize soil conditions, the holder will install such structures as are suitable for the specific soil conditions being encountered and which are in accordance with sound resource management practices.

12. Excluding the pipe, all above-ground structures not subject to safety requirement shall be painted by the holder to blend with the natural color of the landscape. The paint used shall be a color which simulates "Standard Environmental Colors" – **Shale Green**, Munsell Soil Color No. 5Y 4/2; designated by the Rocky Mountain Five State Interagency Committee.

13. The pipeline will be identified by signs at the point of origin and completion of the right-of-way and at all road crossings. At a minimum, signs will state the holder's name, BLM serial number,

and the product being transported. Signs will be maintained in a legible condition for the life of the pipeline.

14. The holder shall not use the pipeline route as a road for purposes other than routine maintenance as determined necessary by the Authorized Officer in consultation with the holder. The holder will take whatever steps are necessary to ensure that the pipeline route is not used as a roadway.

15. Any cultural resource (historic or prehistoric site or object) discovered by the holder, or any person working on the holder's behalf, on public or Federal land shall be immediately reported to the Authorized Officer. The holder shall suspend all operations in the immediate area of such discovery until written authorization to proceed is issued by the Authorized Officer. An evaluation of the discovery will be made by the Authorized Officer to determine appropriate actions to prevent the loss of significant cultural or scientific values. The holder will be responsible for the cost of evaluation and any decision as to the proper mitigation measures will be made by the Authorized Officer after consulting with the holder.

OR

If the entire project is covered under the Permian Basin Programmatic Agreement (cultural resources only):

The proponent has contributed funds commensurate to the undertaking into an account for offsite mitigation. Participation in the PA serves as mitigation for the effects of this project on cultural resources. If any human skeletal remains, funerary objects, sacred objects, or objects of cultural patrimony are discovered at any time during construction, all construction activities shall halt and the BLM will be notified as soon as possible within 24 hours. Work shall not resume until a Notice to Proceed is issued by the BLM. See Stipulation 16 for more information.

If the proposed project is split between a Class III inventory and a Permian Basin Programmatic Agreement contribution, the portion of the project covered under Class III inventory should default to the first paragraph stipulations.

16. The holder is hereby obligated to comply with procedures established in the Native American Graves Protection and Repatriation Act (NAGPRA) to protect such cultural items as human remains, associated funerary objects, sacred objects, and objects of cultural patrimony discovered inadvertently during the course of project implementation. In the event that any of the cultural items listed above are discovered during the course of project work, the proponent shall immediately halt the disturbance and contact the BLM within 24 hours for instructions. The proponent or initiator of any project shall be held responsible for protecting, evaluating, reporting, excavating, treating, and disposing of these cultural items according to the procedures established by the BLM in consultation with Indian Tribes."

17. Any paleontological resource (historic or prehistoric site or object) discovered by the holder, or any person working on the holder's behalf, on public or Federal land shall be immediately reported to the Authorized Officer. The holder shall suspend all operations in the immediate area of such discovery until written authorization to proceed is issued by the Authorized Officer. An evaluation of the discovery will be made by the Authorized Officer to determine appropriate actions to prevent the loss of significant cultural or scientific values. The holder will be responsible for the cost of evaluation and any decision as to the proper mitigation measures will be made by the Authorized Officer after consulting with the holder.

18. The operator shall be held responsible if noxious weeds become established within the areas of operations. Weed control shall be required on the disturbed land where noxious weeds exist, which includes the roads, powerline corridor, and adjacent land affected by the establishment of



weeds due to this action. The operator shall consult with the Authorized Officer for acceptable weed control methods, which include following EPA and BLM requirements and policies.

19. Surface pipelines shall be less than or equal to 4 inches and a working pressure below 125 psi.

### C. ELECTRIC LINES

- Smaller powerlines will be routed around sinkholes and other karst features to avoid or lessen the possibility of encountering near surface voids and to minimize changes to runoff or possible leaks and spills from entering karst systems. Larger powerlines will adjust their pole spacing to avoid cave and karst features.
- The BLM, Carlsbad Field Office, will be informed immediately if any subsurface drainage channels, cave passages, or voids are penetrated during construction.
- No further construction will be done until clearance has been issued by the Authorized Officer.
- Special restoration stipulations or realignment may be required.

### STANDARD STIPULATIONS FOR OVERHEAD ELECTRIC DISTRIBUTION LINES

**A copy of the grant and attachments, including stipulations, survey plat and/or map, will be on location during construction. BLM personnel may request to you a copy of your permit during construction to ensure compliance with all stipulations.**

Holder agrees to comply with the following stipulations to the satisfaction of the Authorized Officer:

1. The holder shall indemnify the United States against any liability for damage to life or property arising from the occupancy or use of public lands under this grant.
2. The holder shall comply with all applicable Federal laws and regulations existing or hereafter enacted or promulgated. In any event, the holder shall comply with the Toxic Substances Control Act of 1976 as amended, 15 USC 2601 et seq. (1982) with regards to any toxic substances that are used, generated by or stored on the right-of-way or on facilities authorized under this right-of-way grant. (See 40 CFR, Part 702-799 and especially, provisions on polychlorinated biphenyls, 40 CFR 761.1-761.193.) Additionally, any release of toxic substances (leaks, spills, etc.) in excess of the reportable quantity established by 40 CFR, Part 117 shall be reported as required by the Comprehensive Environmental Response, Compensation, and Liability Act, section 102b. A copy of any report required or requested by any Federal agency or State government as a result of a reportable release or spill of any toxic substances shall be furnished to the authorized officer concurrent with the filing of the reports to the involved Federal agency or State government.
3. The holder agrees to indemnify the United States against any liability arising from the release of any hazardous substance or hazardous waste (as these terms are defined in the Comprehensive Environmental Response, Compensation and Liability Act of 1980, 42 U.S.C. 9601, et seq. or the Resource Conservation and Recovery Act, 42 U.S.C. 6901, et seq.) on the Right-of-Way (unless the release or threatened release is wholly unrelated to the Right-of-Way holder's activity on the Right-of-Way), or resulting from the activity of the Right-of-Way holder on the Right-of-Way. This agreement applies without regard to whether a release is caused by the holder, its agent, or unrelated third parties.
4. There will be no clearing or blading of the right-of-way unless otherwise agreed to in writing by the Authorized Officer.



5. Power lines shall be constructed and designed in accordance to standards outlined in "Suggested Practices for Avian Protection on Power lines: The State of the Art in 2006" Edison Electric Institute, APLIC, and the California Energy Commission 2006 . The holder shall assume the burden and expense of proving that pole designs not shown in the above publication deter raptor perching, roosting, and nesting. Such proof shall be provided by a raptor expert approved by the Authorized Officer. The BLM reserves the right to require modification or additions to all powerline structures placed on this right-of-way, should they be necessary to ensure the safety of large perching birds. Such modifications and/or additions shall be made by the holder without liability or expense to the United States.

Raptor deterrence will consist of but not limited to the following: triangle perch discouragers shall be placed on each side of the cross arms and a nonconductive perching deterrence shall be placed on all vertical poles that extend past the cross arms.

6. The holder shall minimize disturbance to existing fences and other improvements on public lands. The holder is required to promptly repair improvements to at least their former state. Functional use of these improvements will be maintained at all times. The holder will contact the owner of any improvements prior to disturbing them. When necessary to pass through a fence line, the fence shall be braced on both sides of the passageway prior to cutting the fence. No permanent gates will be allowed unless approved by the Authorized Officer.

7. The BLM serial number assigned to this authorization shall be posted in a permanent, conspicuous manner where the power line crosses roads and at all serviced facilities. Numbers will be at least two inches high and will be affixed to the pole nearest the road crossing and at the facilities served.

8. Upon cancellation, relinquishment, or expiration of this grant, the holder shall comply with those abandonment procedures as prescribed by the Authorized Officer.

9. All surface structures (poles, lines, transformers, etc.) shall be removed within 180 days of abandonment, relinquishment, or termination of use of the serviced facility or facilities or within 180 days of abandonment, relinquishment, cancellation, or expiration of this grant, whichever comes first. This will not apply where the power line extends service to an active, adjoining facility or facilities.

10. Any cultural resource (historic or prehistoric site or object) discovered by the holder, or any person working on the holder's behalf, on public or Federal land shall be immediately reported to the Authorized Officer. The holder shall suspend all operations in the immediate area of such discovery until written authorization to proceed is issued by the Authorized Officer. An evaluation of the discovery will be made by the Authorized Officer to determine appropriate actions to prevent the loss of significant cultural or scientific values. The holder will be responsible for the cost of evaluation and any decision as to the proper mitigation measures will be made by the Authorized Officer after consulting with the holder.

OR

If the entire project is covered under the Permian Basin Programmatic Agreement (cultural resources only):

The proponent has contributed funds commensurate to the undertaking into an account for offsite mitigation. Participation in the PA serves as mitigation for the effects of this project on cultural resources. If any human skeletal remains, funerary objects, sacred objects, or objects of cultural patrimony are discovered at any time during construction, all construction activities shall halt and

the BLM will be notified as soon as possible within 24 hours. Work shall not resume until a Notice to Proceed is issued by the BLM. See Stipulation 11 for more information.

If the proposed project is split between a Class III inventory and a Permian Basin Programmatic Agreement contribution, the portion of the project covered under Class III inventory should default to the first paragraph stipulations.

11. The holder is hereby obligated to comply with procedures established in the Native American Graves Protection and Repatriation Act (NAGPRA) to protect such cultural items as human remains, associated funerary objects, sacred objects, and objects of cultural patrimony discovered inadvertently during the course of project implementation. In the event that any of the cultural items listed above are discovered during the course of project work, the proponent shall immediately halt the disturbance and contact the BLM within 24 hours for instructions. The proponent or initiator of any project shall be held responsible for protecting, evaluating, reporting, excavating, treating, and disposing of these cultural items according to the procedures established by the BLM in consultation with Indian Tribes."

12. Any paleontological resource (historic or prehistoric site or object) discovered by the holder, or any person working on the holder's behalf, on public or Federal land shall be immediately reported to the Authorized Officer. The holder shall suspend all operations in the immediate area of such discovery until written authorization to proceed is issued by the Authorized Officer. An evaluation of the discovery will be made by the Authorized Officer to determine appropriate actions to prevent the loss of significant cultural or scientific values. The holder will be responsible for the cost of evaluation and any decision as to the proper mitigation measures will be made by the Authorized Officer after consulting with the holder.

13. Special Stipulations:

For reclamation remove poles, lines, transformer, etc. and dispose of properly.  
Fill in any holes from the poles removed.

## **VII. INTERIM RECLAMATION**

During the life of the development, all disturbed areas not needed for active support of production operations should undergo interim reclamation in order to minimize the environmental impacts of development on other resources and uses.

Within six (6) months of well completion, operators should work with BLM surface management specialists (Jim Amos: 575-234-5909) to devise the best strategies to reduce the size of the location. Interim reclamation should allow for remedial well operations, as well as safe and efficient removal of oil and gas.

During reclamation, the removal of caliche is important to increasing the success of revegetating the site. Removed caliche that is free of contaminants may be used for road repairs, fire walls or for building other roads and locations. In order to operate the well or complete workover operations, it may be necessary to drive, park and operate on restored interim vegetation within the previously disturbed area. Disturbing revegetated areas for production or workover operations will be allowed. If there is significant disturbance and loss of vegetation, the area will need to be revegetated. Communicate with the appropriate BLM office for any exceptions/exemptions if needed.

All disturbed areas after they have been satisfactorily prepared need to be reseeded with the seed mixture provided below.

Upon completion of interim reclamation, the operator shall submit a Sundry Notices and Reports on Wells, Subsequent Report of Reclamation (Form 3160-5).

#### **VIII. FINAL ABANDONMENT & RECLAMATION**

At final abandonment, well locations, production facilities, and access roads must undergo "final" reclamation so that the character and productivity of the land are restored.

Earthwork for final reclamation must be completed within six (6) months of well plugging. All pads, pits, facility locations and roads must be reclaimed to a satisfactory revegetated, safe, and stable condition, unless an agreement is made with the landowner or BLM to keep the road and/or pad intact.

After all disturbed areas have been satisfactorily prepared, these areas need to be revegetated with the seed mixture provided below. Seeding should be accomplished by drilling on the contour whenever practical or by other approved methods. Seeding may need to be repeated until revegetation is successful, as determined by the BLM.

Operators shall contact a BLM surface protection specialist prior to surface abandonment operations for site specific objectives (Jim Amos: 575-234-5909).

**Seed Mixture 2, for Sandy Sites**

The holder shall seed all disturbed areas with the seed mixture listed below. The seed mixture shall be planted in the amounts specified in pounds of pure live seed (PLS)\* per acre. There shall be no primary or secondary noxious weeds in the seed mixture. Seed will be tested and the viability testing of seed will be done in accordance with State law (s) and within nine (9) months prior to purchase. Commercial seed will be either certified or registered seed. The seed container will be tagged in accordance with State law(s) and available for inspection by the authorized officer.

Seed will be planted using a drill equipped with a depth regulator to ensure proper depth of planting where drilling is possible. The seed mixture will be evenly and uniformly planted over the disturbed area (smaller/heavier seeds have a tendency to drop the bottom of the drill and are planted first). The holder shall take appropriate measures to ensure this does not occur. Where drilling is not possible, seed will be broadcast and the area shall be raked or chained to cover the seed. When broadcasting the seed, the pounds per acre are to be doubled. The seeding will be repeated until a satisfactory stand is established as determined by the authorized officer. Evaluation of growth will not be made before completion of at least one full growing season after seeding.

Species to be planted in pounds of pure live seed\* per acre:

**Species**

	<u>lb/acre</u>
Sand dropseed ( <i>Sporobolus cryptandrus</i> )	1.0
Sand love grass ( <i>Eragrostis trichodes</i> )	1.0
Plains bristlegrass ( <i>Setaria macrostachya</i> )	2.0

\*Pounds of pure live seed:

Pounds of seed x percent purity x percent germination = pounds pure live seed

## PECOS DISTRICT DRILLING CONDITIONS OF APPROVAL

<b>OPERATOR'S NAME:</b>	OXY USA INC.
<b>LEASE NO.:</b>	NMNM120897
<b>LOCATION:</b>	Section 13 T.24 S., R.30 E., NMP
<b>COUNTY:</b>	Eddy County, New Mexico

<b>WELL NAME &amp; NO.:</b>	NIMITZ MDP1 13-1 FEDERAL COM 312H
<b>SURFACE HOLE FOOTAGE:</b>	179'S & 2475'E
<b>BOTTOM HOLE FOOTAGE:</b>	20'N & 2450'W

COA

H2S	<input type="radio"/> Yes	<input checked="" type="radio"/> No	
Potash	<input type="radio"/> None	<input checked="" type="radio"/> Secretary	<input type="radio"/> R-111-P
Cave/Karst Potential	<input checked="" type="radio"/> Low	<input type="radio"/> Medium	<input type="radio"/> High
Cave/Karst Potential	<input type="radio"/> Critical		
Variance	<input type="radio"/> None	<input checked="" type="radio"/> Flex Hose	<input type="radio"/> Other
Wellhead	<input type="radio"/> Conventional	<input type="radio"/> Multibowl	<input checked="" type="radio"/> Both
Other	<input type="checkbox"/> 4 String Area	<input type="checkbox"/> Capitan Reef	<input type="checkbox"/> WIPP
Other	<input type="checkbox"/> Fluid Filled	<input checked="" type="checkbox"/> Cement Squeeze	<input type="checkbox"/> Pilot Hole
Special Requirements	<input type="checkbox"/> Water Disposal	<input checked="" type="checkbox"/> COM	<input type="checkbox"/> Unit

### A. HYDROGEN SULFIDE

Hydrogen Sulfide (H2S) monitors shall be installed prior to drilling out the surface shoe. If H2S is detected in concentrations greater than 100 ppm, the Hydrogen Sulfide area shall meet Onshore Order 6 requirements, which includes equipment and personnel/public protection items. If Hydrogen Sulfide is encountered, provide measured values and formations to the BLM.

### B. CASING

#### Casing Design:

1. The **10-3/4** inch surface casing shall be set at approximately **595** feet (a minimum of **70 feet (Eddy County)** into the Rustler Anhydrite and above the salt) and cemented to the surface.
  - a. If cement does not circulate to the surface, the appropriate BLM office shall be notified and a temperature survey utilizing an electronic type temperature survey with surface log readout will be used or a cement bond log shall be run to verify the top of the cement. Temperature survey will be run a minimum of

six hours after pumping cement and ideally between 8-10 hours after completing the cement job.

- b. Wait on cement (WOC) time for a primary cement job will be a minimum of **24 hours in the Potash Area** or 500 pounds compressive strength, whichever is greater. (This is to include the lead cement)
  - c. Wait on cement (WOC) time for a remedial job will be a minimum of 4 hours after bringing cement to surface or 500 pounds compressive strength, whichever is greater.
  - d. If cement falls back, remedial cementing will be done prior to drilling out that string.
2. The minimum required fill of cement behind the **7-5/8** inch intermediate casing is:

**Option 1 (Single Stage):**

- Cement to surface. If cement does not circulate see B.1.a, c-d above.  
**Wait on cement (WOC) time for a primary cement job is to include the lead cement slurry due to cave/karst or potash.**

**Option 2:**

Operator has proposed a DV tool, the depth may be adjusted as long as the cement is changed proportionally. The DV tool may be cancelled if cement circulates to surface on the first stage.

- a. First stage to DV tool: Cement to circulate. If cement does not circulate off the DV tool, contact the appropriate BLM office before proceeding with second stage cement job.
  - b. Second stage above DV tool:
    - Cement to surface. If cement does not circulate, contact the appropriate BLM office.  
**Wait on cement (WOC) time for a primary cement job is to include the lead cement slurry due to cave/karst or potash.**
- ❖ In **Secretary Potash Areas** if cement does not circulate to surface on the first two casing strings, the cement on the 3rd casing string must come to surface.

**Operator has proposed to pump down 10-3/4" X 7-5/8" annulus. Operator must run a CBL or ECHO-METER from TD of the 7-5/8" casing to surface. Submit results to BLM.**

3. The minimum required fill of cement behind the **5-1/2** inch production casing is:

**Option 1 (Single Stage):**

- Cement should tie-back at least **500 feet** into previous casing string. Operator shall provide method of verification.

**Option 2:**

Operator has proposed a DV tool, the depth may be adjusted as long as the cement is changed proportionally. The DV tool may be cancelled if cement circulates to surface on the first stage.

- a. First stage to DV tool: Cement to circulate. If cement does not circulate off the DV tool, contact the appropriate BLM office before proceeding with second stage cement job.
- b. Second stage above DV tool:
  - Cement should tie-back at least **500 feet** into previous casing string. Operator shall provide method of verification.

**C. PRESSURE CONTROL**

1. Variance approved to use flex line from BOP to choke manifold. Manufacturer's specification to be readily available. No external damage to flex line. Flex line to be installed as straight as possible (no hard bends).'
- 2.

**Option 1:**

- a. Minimum working pressure of the blowout preventer (BOP) and related equipment (BOPE) required for drilling below the surface casing shoe shall be **3000 (3M)** psi.
- b. Minimum working pressure of the blowout preventer (BOP) and related equipment (BOPE) required for drilling below the intermediate casing shoe shall be **5000 (5M)** psi.

**Option 2:**

1. Operator has proposed a multi-bowl wellhead assembly. This assembly will only be tested when installed on the surface casing. Minimum working pressure of the blowout preventer (BOP) and related equipment (BOPE) required for drilling below the surface casing shoe shall be **5000 (5M)** psi.
  - a. Wellhead shall be installed by manufacturer's representatives, submit documentation with subsequent sundry.



- b. If the welding is performed by a third party, the manufacturer's representative shall monitor the temperature to verify that it does not exceed the maximum temperature of the seal.
- c. Manufacturer representative shall install the test plug for the initial BOP test.
- d. If the cement does not circulate and one inch operations would have been possible with a standard wellhead, the well head shall be cut off, cementing operations performed and another wellhead installed.
- e. Whenever any seal subject to test pressure is broken, all the tests in OOGO2.III.A.2.i must be followed.

#### **D. SPECIAL REQUIREMENT (S)**

##### **Communitization Agreement**

- The operator will submit a Communitization Agreement to the Santa Fe Office, 301 Dinosaur Trail Santa Fe, New Mexico 87508, at least 90 days before the anticipated date of first production from a well subject to a spacing order issued by the New Mexico Oil Conservation Division. The Communitization Agreement will include the signatures of all working interest owners in all Federal and Indian leases subject to the Communitization Agreement (i.e., operating rights owners and lessees of record), or certification that the operator has obtained the written signatures of all such owners and will make those signatures available to the BLM immediately upon request.
- If the operator does not comply with this condition of approval, the BLM may take enforcement actions that include, but are not limited to, those specified in 43 CFR 3163.1.
- In addition, the well sign shall include the surface and bottom hole lease numbers. When the Communitization Agreement number is known, it shall also be on the sign.

## GENERAL REQUIREMENTS

The BLM is to be notified in advance for a representative to witness:

- a. Spudding well (minimum of 24 hours)
- b. Setting and/or Cementing of all casing strings (minimum of 4 hours)
- c. BOPE tests (minimum of 4 hours)

☒ Eddy County

Call the Carlsbad Field Office, 620 East Greene St., Carlsbad, NM 88220,  
(575) 361-2822

☒ Lea County

Call the Hobbs Field Station, 414 West Taylor, Hobbs NM 88240, (575)  
393-3612

1. Unless the production casing has been run and cemented or the well has been properly plugged, the drilling rig shall not be removed from over the hole without prior approval.
  - a. In the event the operator has proposed to drill multiple wells utilizing a skid/walking rig. Operator shall secure the wellbore on the current well, after installing and testing the wellhead, by installing a blind flange of like pressure rating to the wellhead and a pressure gauge that can be monitored while drilling is performed on the other well(s).
  - b. When the operator proposes to set surface casing with Spudder Rig
    - Notify the BLM when moving in and removing the Spudder Rig.
    - Notify the BLM when moving in the 2<sup>nd</sup> Rig. Rig to be moved in within 90 days of notification that Spudder Rig has left the location.
    - BOP/BOPE test to be conducted per Onshore Oil and Gas Order No. 2 as soon as 2nd Rig is rigged up on well.
2. Floor controls are required for 3M or Greater systems. These controls will be on the rig floor, unobstructed, readily accessible to the driller and will be operational at all times during drilling and/or completion activities. Rig floor is defined as the area immediately around the rotary table; the area immediately above the substructure on which the draw works are located, this does not include the dog house or stairway area.
3. The record of the drilling rate along with the GR/N well log run from TD to surface (horizontal well – vertical portion of hole) shall be submitted to the BLM office as well as all other logs run on the borehole 30 days from completion. If available, a digital copy of the logs is to be submitted in addition to the paper copies. The Rustler top and top and bottom of Salt are to be recorded on the Completion Report.

## A. CASING

1. Changes to the approved APD casing program need prior approval if the items substituted are of lesser grade or different casing size or are Non-API. The Operator can exchange the components of the proposal with that of superior strength (i.e. changing from J-55 to N-80, or from 36# to 40#). Changes to the approved cement program need prior approval if the altered cement plan has less volume or strength or if the changes are substantial (i.e. Multistage tool, ECP, etc.). The initial wellhead installed on the well will remain on the well with spools used as needed.
2. Wait on cement (WOC) for Potash Areas: After cementing but before commencing any tests, the casing string shall stand cemented under pressure until both of the following conditions have been met: 1) cement reaches a minimum compressive strength of 500 psi for all cement blends, 2) until cement has been in place at least 24 hours. WOC time will be recorded in the driller's log. The casing integrity test can be done (prior to the cement setting up) immediately after bumping the plug.
3. Wait on cement (WOC) for Water Basin: After cementing but before commencing any tests, the casing string shall stand cemented under pressure until both of the following conditions have been met: 1) cement reaches a minimum compressive strength of 500 psi at the shoe, 2) until cement has been in place at least 8 hours. WOC time will be recorded in the driller's log. See individual casing strings for details regarding lead cement slurry requirements. The casing integrity test can be done (prior to the cement setting up) immediately after bumping the plug.
4. Provide compressive strengths including hours to reach required 500 pounds compressive strength prior to cementing each casing string. Have well specific cement details onsite prior to pumping the cement for each casing string.
5. No pea gravel permitted for remedial or fall back remedial without prior authorization from the BLM engineer.
6. On that portion of any well approved for a 5M BOPE system or greater, a pressure integrity test of each casing shoe shall be performed. Formation at the shoe shall be tested to a minimum of the mud weight equivalent anticipated to control the formation pressure to the next casing depth or at total depth of the well. This test shall be performed before drilling more than 20 feet of new hole.
7. If hardband drill pipe is rotated inside casing, returns will be monitored for metal. If metal is found in samples, drill pipe will be pulled and rubber protectors which have a larger diameter than the tool joints of the drill pipe will be installed prior to continuing drilling operations.
8. Whenever a casing string is cemented in the R-111-P potash area, the NMOCD requirements shall be followed.

**B. PRESSURE CONTROL**

1. All blowout preventer (BOP) and related equipment (BOPE) shall comply with well control requirements as described in Onshore Oil and Gas Order No. 2 and API RP 53 Sec. 17.
2. If a variance is approved for a flexible hose to be installed from the BOP to the choke manifold, the following requirements apply: The flex line must meet the requirements of API 16C. Check condition of flexible line from BOP to choke manifold, replace if exterior is damaged or if line fails test. Line to be as straight as possible with no hard bends and is to be anchored according to Manufacturer's requirements. The flexible hose can be exchanged with a hose of equal size and equal or greater pressure rating. Anchor requirements, specification sheet and hydrostatic pressure test certification matching the hose in service, to be onsite for review. These documents shall be posted in the company man's trailer and on the rig floor.
3. 5M or higher system requires an HCR valve, remote kill line and annular to match. The remote kill line is to be installed prior to testing the system and tested to stack pressure.
4. If the operator has proposed a multi-bowl wellhead assembly in the APD. The following requirements must be met:
  - a. Wellhead shall be installed by manufacturer's representatives, submit documentation with subsequent sundry.
  - b. If the welding is performed by a third party, the manufacturer's representative shall monitor the temperature to verify that it does not exceed the maximum temperature of the seal.
  - c. Manufacturer representative shall install the test plug for the initial BOP test.
  - d. Whenever any seal subject to test pressure is broken, all the tests in OOGO2.III.A.2.i must be followed.
  - e. If the cement does not circulate and one inch operations would have been possible with a standard wellhead, the well head shall be cut off, cementing operations performed and another wellhead installed.
5. The appropriate BLM office shall be notified a minimum of 4 hours in advance for a representative to witness the tests.
  - a. In a water basin, for all casing strings utilizing slips, these are to be set as soon as the crew and rig are ready and any fallback cement remediation has been done. The casing cut-off and BOP installation can be initiated four hours after installing the slips, which will be approximately six hours after bumping the plug. For those casing strings not using slips, the minimum wait time before cut-off is eight hours after bumping the plug. BOP/BOPE testing can begin after cut-off or once cement reaches 500 psi compressive strength (including

lead when specified), whichever is greater. However, if the float does not hold, cut-off cannot be initiated until cement reaches 500 psi compressive strength (including lead when specified).

- b. In potash areas, for all casing strings utilizing slips, these are to be set as soon as the crew and rig are ready and any fallback cement remediation has been done. For all casing strings, casing cut-off and BOP installation can be initiated at twelve hours after bumping the plug. However, **no tests** shall commence until the cement has had a minimum of 24 hours setup time, except the casing pressure test can be initiated immediately after bumping the plug (only applies to single stage cement jobs).
- c. The tests shall be done by an independent service company utilizing a test plug not a cup or J-packer. The operator also has the option of utilizing an independent tester to test without a plug (i.e. against the casing) pursuant to Onshore Order 2 with the pressure not to exceed 70% of the burst rating for the casing. Any test against the casing must meet the WOC time for water basin (8 hours) or potash (24 hours) or 500 pounds compressive strength, whichever is greater, prior to initiating the test (see casing segment as lead cement may be critical item).
- d. The test shall be run on a 5000 psi chart for a 2-3M BOP/BOP, on a 10000 psi chart for a 5M BOP/BOPE and on a 15000 psi chart for a 10M BOP/BOPE. If a linear chart is used, it shall be a one hour chart. A circular chart shall have a maximum 2 hour clock. If a twelve hour or twenty-four hour chart is used, tester shall make a notation that it is run with a two hour clock.
- e. The results of the test shall be reported to the appropriate BLM office.
- f. All tests are required to be recorded on a calibrated test chart. A copy of the BOP/BOPE test chart and a copy of independent service company test will be submitted to the appropriate BLM office.
- g. The BOP/BOPE test shall include a low pressure test from 250 to 300 psi. The test will be held for a minimum of 10 minutes if test is done with a test plug and 30 minutes without a test plug. This test shall be performed prior to the test at full stack pressure.
- h. BOP/BOPE must be tested by an independent service company within 500 feet of the top of the Wolfcamp formation if the time between the setting of the intermediate casing and reaching this depth exceeds 20 days. This test does not exclude the test prior to drilling out the casing shoe as per Onshore Order No. 2.

C. DRILLING MUD

Mud system monitoring equipment, with derrick floor indicators and visual and audio alarms, shall be operating before drilling into the Wolfcamp formation, and shall be used until production casing is run and cemented.

D. WASTE MATERIAL AND FLUIDS

All waste (i.e. drilling fluids, trash, salts, chemicals, sewage, gray water, etc.) created as a result of drilling operations and completion operations shall be safely contained and disposed of properly at a waste disposal facility. No waste material or fluid shall be disposed of on the well location or surrounding area.

Porto-johns and trash containers will be on-location during fracturing operations or any other crew-intensive operations.

**NMK01192021**



## **Permian Drilling Hydrogen Sulfide Drilling Operations Plan New Mexico**

### **Scope**

This contingency plan establishes guidelines for the public, all company employees, and contract employees who's work activities may involve exposure to hydrogen sulfide (H<sub>2</sub>S) gas.

While drilling this well, it is possible to encounter H<sub>2</sub>S bearing formations. At all times, the first barrier to control H<sub>2</sub>S emissions will be the drilling fluid, which will have a density high enough to control influx.

### **Objective**

1. Provide an immediate and predetermined response plan to any condition when H<sub>2</sub>S is detected. All H<sub>2</sub>S detections in excess of 10 parts per million (ppm) concentration are considered an Emergency.
2. Prevent any and all accidents, and prevent the uncontrolled release of hydrogen sulfide into the atmosphere.
3. Provide proper evacuation procedures to cope with emergencies.
4. Provide immediate and adequate medical attention should an injury occur.



## **Discussion**

Implementation:	This plan with all details is to be fully implemented before drilling to <u>commence</u> .
Emergency response Procedure:	This section outlines the conditions and denotes steps to be taken in the event of an emergency.
Emergency equipment Procedure:	This section outlines the safety and emergency equipment that will be required for the drilling of this well.
Training provisions:	This section outlines the training provisions that must be adhered to prior to drilling.
Drilling emergency call lists:	Included are the telephone numbers of all persons to be contacted should an emergency exist.
Briefing:	This section deals with the briefing of all people involved in the drilling operation.
Public safety:	Public safety personnel will be made aware of any potential evacuation and any additional support needed.
Check lists:	Status check lists and procedural check lists have been included to insure adherence to the plan.
General information:	A general information section has been included to supply support information.

### **Hydrogen Sulfide Training**

All personnel, whether regularly assigned, contracted, or employed on an unscheduled basis, will receive training from a qualified instructor in the following areas prior to commencing drilling operations on the well:

1. The hazards and characteristics of H<sub>2</sub>S.
2. Proper use and maintenance of personal protective equipment and life support systems.
3. H<sub>2</sub>S detection.
4. Proper use of H<sub>2</sub>S detectors, alarms, warning systems, briefing areas, evacuation procedures and prevailing winds.
5. Proper techniques for first aid and rescue procedures.
6. Physical effects of hydrogen sulfide on the human body.
7. Toxicity of hydrogen sulfide and sulfur dioxide.
8. Use of SCBA and supplied air equipment.
9. First aid and artificial respiration.
10. Emergency rescue.

In addition, supervisory personnel will be trained in the following areas:

1. The effects of H<sub>2</sub>S on metal components. If high tensile strength tubular is to be used, personnel will be trained in their special maintenance requirements.
2. Corrective action and shut-in procedures when drilling a well, blowout prevention and well control procedures.
3. The contents and requirements of the H<sub>2</sub>S Drilling Operations Plan.

H<sub>2</sub>S training refresher must have been taken within one year prior to drilling the well. Specifics on the well to be drilled will be discussed during the pre-spud meeting. H<sub>2</sub>S and well control (choke) drills will be performed while drilling the well, at least on a weekly basis. This plan shall be available in the well site. All personnel will be required to carry the documentation proving that the H<sub>2</sub>S training has been taken.

#### **Service company and visiting personnel**

- A. Each service company that will be on this well will be notified if the zone contains H<sub>2</sub>S.
- B. Each service company must provide for the training and equipment of their employees before they arrive at the well site.
- C. Each service company will be expected to attend a well site briefing

### **Emergency Equipment Requirements**

1. **Well control equipment**

The well shall have hydraulic BOP equipment for the anticipated pressures. Equipment is to be tested on installation and follow Oxy Well Control standard, as well as BLM Onshore Order #2.

*Special control equipment:*

- A. Hydraulic BOP equipment with remote control on ground. Remotely operated choke.
- B. Rotating head
- C. Gas buster equipment shall be installed before drilling out of surface pipe.

2. **Protective equipment for personnel**

- A. Four (4) 30-minute positive pressure air packs (2 at each briefing area) on location.
- B. Adequate fire extinguishers shall be located at strategic locations.
- C. Radio / cell telephone communication will be available at the rig.
  - Rig floor and trailers.
  - Vehicle.

3. **Hydrogen sulfide sensors and alarms**

- A. H<sub>2</sub>S sensor with alarms will be located on the rig floor, at the bell nipple, and at the flow line. These monitors will be set to alarm at 10 ppm with strobe light, and audible alarm.
- B. Hand operated detectors with tubes.
- C. H<sub>2</sub>S monitor tester (to be provided by contract Safety Company.)
- D. There shall be one combustible gas detector on location at all times.

4. **Visual Warning Systems**

- A. One sign located at each location entrance with the following language:

**Caution – potential poison gas  
Hydrogen sulfide  
No admittance without authorization**

*Wind sock – wind streamers:*

- A. One 36" (in length) wind sock located at protection center, at height visible from rig floor.
- B. One 36" (in length) wind sock located at height visible from pit areas.

*Condition flags*

- A. One each condition flag to be displayed to denote conditions.

**green – normal conditions**  
**yellow – potential danger**  
**red – danger, H2S present**

- B. Condition flag shall be posted at each location sign entrance.

5. Mud Program

The mud program is designed to minimize the risk of having H2S and other formation fluids at surface. Proper mud weight and safe drilling practices will be applied. H2S scavengers will be used to minimize the hazards while drilling. Below is a summary of the drilling program.

*Mud inspection devices:*

Garrett gas train or hatch tester for inspection of sulfide concentration in mud system.

6. Metallurgy

- A. Drill string, casing, tubing, wellhead, blowout preventers, drilling spools or adapters, kill lines, choke manifold, lines and valves shall be suitable for the H2S service.
- B. All the elastomers, packing, seals and ring gaskets shall be suitable for H2S service.

7. Well Testing

No drill stem test will be performed on this well.

8. Evacuation plan

Evacuation routes should be established prior to well spud for each well and discussed with all rig personnel.

9. Designated area

- A. Parking and visitor area: all vehicles are to be parked at a predetermined safe distance from the wellhead.
- B. There will be a designated smoking area.
- C. Two briefing areas on either side of the location at the maximum allowable distance from the well bore so they offset prevailing winds perpendicularly, or at a 45-degree angle if wind direction tends to shift in the area.

**Emergency procedures**

- A. In the event of any evidence of H<sub>2</sub>S level above 10 ppm, take the following steps:
  - 1. The Driller will pick up off bottom, shut down the pumps, slow down the pipe rotation.
  - 2. Secure and don escape breathing equipment, report to the upwind designated safe briefing / muster area.
  - 3. All personnel on location will be accounted for and emergency search should begin for any missing, the Buddy System will be implemented.
  - 4. Order non-essential personnel to leave the well site, order all essential personnel out of the danger zone and upwind to the nearest designated safe briefing / muster area.
  - 5. Entrance to the location will be secured to a higher level than our usual "Meet and Greet" requirement, and the proper condition flag will be displayed at the entrance to the location.
  - 6. Take steps to determine if the H<sub>2</sub>S level can be corrected or suppressed and, if so, proceed as required.
- B. If uncontrollable conditions occur:
  - 1. Take steps to protect and/or remove any public in the down-wind area from the rig – partial evacuation and isolation. Notify necessary public safety personnel and appropriate regulatory entities (i.e. BLM) of the situation.

2. Remove all personnel to the nearest upwind designated safe briefing / muster area or off location.
3. Notify public safety personnel of safe briefing / muster area.
4. An assigned crew member will blockade the entrance to the location. No unauthorized personnel will be allowed entry to the location.
5. Proceed with best plan (at the time) to regain control of the well. Maintain tight security and safety procedures.

C. Responsibility:

1. Designated personnel.
  - a. Shall be responsible for the total implementation of this plan.
  - b. Shall be in complete command during any emergency.
  - c. Shall designate a back-up.

- |                     |  |
|---------------------|--|
| All personnel:      | <ol style="list-style-type: none"> <li>1. On alarm, don escape unit and report to the nearest upwind designated safe briefing / muster area upw</li> <li>2. Check status of personnel (buddy system).</li> <li>3. Secure breathing equipment.</li> <li>4. Await orders from supervisor.</li> </ol>   |
| Drill site manager: | <ol style="list-style-type: none"> <li>1. Don escape unit if necessary and report to nearest upwind designated safe briefing / muster area.</li> <li>2. Coordinate preparations of individuals to return to point of release with tool pusher and driller (using the buddy system).</li> <li>3. Determine H2S concentrations.</li> <li>4. Assess situation and take control measures.</li> </ol> |
| Tool pusher:        | <ol style="list-style-type: none"> <li>1. Don escape unit Report to up nearest upwind designated safe briefing / muster area.</li> <li>2. Coordinate preparation of individuals to return to point of release with tool pusher drill site manager (using the buddy system).</li> <li>3. Determine H2S concentration.</li> <li>4. Assess situation and take control measures.</li> </ol>          |
| Driller:            | <ol style="list-style-type: none"> <li>1. Don escape unit, shut down pumps, continue</li> </ol>  |

- rotating DP.
  - 2. Check monitor for point of release.
  - 3. Report to nearest upwind designated safe briefing / muster area.
  - 4. Check status of personnel (in an attempt to rescue, use the buddy system).
  - 5. Assigns least essential person to notify Drill Site Manager and tool pusher by quickest means in case of their absence.
  - 6. Assumes the responsibilities of the Drill Site Manager and tool pusher until they arrive should they be absent.
- Derrick man
- Floor man #1
- Floor man #2
1. Will remain in briefing / muster area until instructed by supervisor.
- Mud engineer:
1. Report to nearest upwind designated safe briefing / muster area.
2. When instructed, begin check of mud for ph and H2S level. (Garett gas train.)
- Safety personnel:
1. Mask up and check status of all personnel and secure operations as instructed by drill site manager.

### **Taking a kick**

When taking a kick during an H2S emergency, all personnel will follow standard Well control procedures after reporting to briefing area and masking up.

### **Open-hole logging**

All unnecessary personnel off floor. Drill Site Manager and safety personnel should monitor condition, advise status and determine need for use of air equipment.

### **Running casing or plugging**

Following the same “tripping” procedure as above. Drill Site Manager and safety personnel should determine if all personnel have access to protective equipment.



### **Ignition procedures**

The decision to ignite the well is the responsibility of the operator (Oxy Drilling Management). The decision should be made only as a last resort and in a situation where it is clear that:

1. Human life and property are endangered.
2. There is no hope controlling the blowout under the prevailing conditions at the well.

### **Instructions for igniting the well**

1. Two people are required for the actual igniting operation. They must wear self-contained breathing units and have a safety rope attached. One man (tool pusher or safety engineer) will check the atmosphere for explosive gases with the gas monitor. The other man is responsible for igniting the well.
2. Primary method to ignite: 25 mm flare gun with range of approximately 500 feet.
3. Ignite upwind and do not approach any closer than is warranted.
4. Select the ignition site best for protection, and which offers an easy escape route.
5. Before firing, check for presence of combustible gas.
6. After lighting, continue emergency action and procedure as before.
7. All unassigned personnel will remain in briefing area until instructed by supervisor or directed by the Drill Site Manager.

**Remember:** After well is ignited, burning hydrogen sulfide will convert to sulfur dioxide, which is also highly toxic. **Do not assume the area is safe after the well is ignited.**

**Status check list**

Note: All items on this list must be completed before drilling to production casing point.

1. H2S sign at location entrance.
2. Two (2) wind socks located as required.
3. Four (4) 30-minute positive pressure air packs (2 at each Briefing area) on location for all rig personnel and mud loggers.
4. Air packs inspected and ready for use.
5. Cascade system and hose line hook-up as needed.
6. Cascade system for refilling air bottles as needed.
7. Condition flag on location and ready for use.
8. H2S detection system hooked up and tested.
9. H2S alarm system hooked up and tested.
10. Hand operated H2S detector with tubes on location.
11. 1 – 100' length of nylon rope on location.
12. All rig crew and supervisors trained as required.
13. All outside service contractors advised of potential H2S hazard on well.
14. No smoking sign posted and a designated smoking area identified.
15. Calibration of all H2S equipment shall be noted on the IADC report.

Checked by:\_\_\_\_\_ Date:\_\_\_\_\_

**Procedural check list during H2S events**

**Perform each tour:**

1. Check fire extinguishers to see that they have the proper charge.
2. Check breathing equipment to ensure that it is in proper working order.
3. Make sure all the H2S detection system is operative.

**Perform each week:**

1. Check each piece of breathing equipment to make sure that demand or forced air regulator is working. This requires that the bottle be opened and the mask assembly be put on tight enough so that when you inhale, you receive air or feel air flow.
2. BOP skills (well control drills).
3. Check supply pressure on BOP accumulator stand by source.
4. Check breathing equipment mask assembly to see that straps are loosened and turned back, ready to put on.
5. Check pressure on breathing equipment air bottles to make sure they are charged to full volume. ( Air quality checked for proper air grade "D" before bringing to location)
6. Confirm pressure on all supply air bottles.
7. Perform breathing equipment drills with on-site personnel.
8. Check the following supplies for availability.
  - A. Emergency telephone list.
  - B. Hand operated H2S detectors and tubes.

### **General evacuation plan**

1. When the company approved supervisor (Drill Site Manager, consultant, rig pusher, or driller) determines the H2S gas cannot be limited to the well location and the public will be involved, he will activate the evacuation plan.
2. Drill Site Manager or designee will notify local government agency that a hazardous condition exists and evacuation needs to be implemented.
3. Company or contractor safety personnel that have been trained in the use of H2S detection equipment and self-contained breathing equipment will monitor H2S concentrations, wind directions, and area of exposure. They will delineate the outer perimeter of the hazardous gas area. Extension to the evacuation area will be determined from information gathered.
4. Law enforcement personnel (state police, police dept., fire dept., and sheriff's dept.) Will be called to aid in setting up and maintaining road blocks. Also, they will aid in evacuation of the public if necessary.
5. After the discharge of gas has been controlled, company safety personnel will determine when the area is safe for re-entry.

**Important: Law enforcement personnel will not be asked to come into a contaminated area. Their assistance will be limited to uncontaminated areas. Constant radio contact will be maintained with them.**

### **Emergency actions**

#### **Well blowout – if emergency**

1. Evacuate all personnel to “Safe Briefing / Muster Areas” or off location if needed.
2. If sour gas – evacuate rig personnel.
3. If sour gas – evacuate public within 3000 ft radius of exposure.
4. Don SCBA and shut well in if possible using the buddy system.
5. Notify Drilling Superintendent and call 911 for emergency help (fire dept and ambulance) if needed.
6. Implement the Blowout Contingency Plan, and Drilling Emergency Action Plan.
6. Give first aid as needed.

#### **Person down location/facility**

1. If immediately possible, contact 911. Give location and wait for confirmation.
2. Don SCBA and perform rescue operation using buddy system.

### **Toxic effects of hydrogen sulfide**

Hydrogen sulfide is extremely toxic. The acceptable ceiling concentration for eight-hour exposure is 10 ppm, which is .001% by volume. Hydrogen sulfide is heavier than air (specific gravity – 1.192) and colorless. It forms an explosive mixture with air between 4.3 and 46.0 percent by volume. Hydrogen sulfide is almost as toxic as hydrogen cyanide and is between five and six times more toxic than carbon monoxide. Toxicity data for hydrogen sulfide and various other gases are compared in table i. Physical effects at various hydrogen sulfide exposure levels are shown in table ii.

Table i  
Toxicity of various gases

Common name	Chemical formula	Specific gravity (sc=1)	Threshold limit (1)	Hazardous limit (2)	Lethal concentration (3)
Hydrogen Cyanide	Hcn	0.94	10 ppm	150 ppm/hr	300 ppm
Hydrogen Sulfide	H2S	1.18	10 ppm	250 ppm/hr	600 ppm
Sulfur Dioxide	So2	2.21	5 ppm	-	1000 ppm
Chlorine	Cl2	2.45	1 ppm	4 ppm/hr	1000 ppm
Carbon Monoxide	Co	0.97	50 ppm	400 ppm/hr	1000 ppm
Carbon Dioxide	Co2	1.52	5000 ppm	5%	10%
Methane	Ch4	0.55	90,000 ppm	Combustible above 5% in air	

- 1) threshold limit – concentration at which it is believed that all workers may be repeatedly exposed day after day without adverse effects.
- 2) hazardous limit – concentration that will cause death with short-term exposure.
- 3) lethal concentration – concentration that will cause death with short-term exposure.

### **Toxic effects of hydrogen sulfide**

Table ii  
Physical effects of hydrogen sulfide

<u>Percent (%)</u>	<u>Ppm</u>	<u>Concentration</u> Grains <u>100 std. Ft3*</u>	<u>Physical effects</u>
0.001	<10	00.65	Obvious and unpleasant odor.

0.002	10	01.30	Safe for 8 hours of exposure.
0.010	100	06.48	Kill smell in 3 – 15 minutes. May sting eyes and throat.
0.020	200	12.96	Kills smell shortly; stings eyes and throat.
0.050	500	32.96	Dizziness; breathing ceases in a few minutes; needs prompt artificial respiration.
0.070	700	45.36	Unconscious quickly; death will result if not rescued promptly.
0.100	1000	64.30	Unconscious at once; followed by death within minutes.

\*at 15.00 psia and 60'f.

**Use of self-contained breathing equipment (SCBA)**

1. Written procedures shall be prepared covering safe use of SCBA's in dangerous atmosphere, which might be encountered in normal operations or in emergencies. Personnel shall be familiar with these procedures and the available SCBA.
2. SCBA's shall be inspected frequently at random to insure that they are properly used, cleaned, and maintained.
3. Anyone who may use the SCBA's shall be trained in how to insure proper face-piece to face seal. They shall wear SCBA's in normal air and then wear them in a test atmosphere. (note: such items as facial hair {beard or sideburns} and eyeglasses will not allow proper seal.) Anyone that may be reasonably expected to wear SCBA's should have these items removed before entering a toxic atmosphere. A special mask must be obtained for anyone who must wear eyeglasses or contact lenses.
4. Maintenance and care of SCBA's:
  - a. A program for maintenance and care of SCBA's shall include the following:
    1. Inspection for defects, including leak checks.
    2. Cleaning and disinfecting.
    3. Repair.
    4. Storage.
  - b. Inspection, self-contained breathing apparatus for emergency use shall be inspected monthly.
    1. Fully charged cylinders.
    2. Regulator and warning device operation.
    3. Condition of face piece and connections.
    4. Rubber parts shall be maintained to keep them pliable and prevent deterioration.
  - c. Routinely used SCBA's shall be collected, cleaned and disinfected as frequently as necessary to insure proper protection is provided.
5. Persons assigned tasks that requires use of self-contained breathing equipment shall be certified physically fit (medically cleared) for breathing equipment usage at least annually.
6. SCBA's should be worn when:
  - A. Any employee works near the top or on top of any tank unless test reveals less than 10 ppm of H<sub>2</sub>S.



- B. When breaking out any line where H<sub>2</sub>S can reasonably be expected.
- C. When sampling air in areas to determine if toxic concentrations of H<sub>2</sub>S exists.
- D. When working in areas where over 10 ppm H<sub>2</sub>S has been detected.
- E. At any time there is a doubt as to the H<sub>2</sub>S level in the area to be entered.

**Rescue**  
**First aid for H<sub>2</sub>S poisoning**

Do not panic!

Remain calm – think!

1. Don SCBA breathing equipment.
2. Remove victim(s) utilizing buddy system to fresh air as quickly as possible. (go up-wind from source or at right angle to the wind. Not down wind.)
3. Briefly apply chest pressure – arm lift method of artificial respiration to clean the victim's lungs and to avoid inhaling any toxic gas directly from the victim's lungs.
4. Provide for prompt transportation to the hospital, and continue giving artificial respiration if needed.
5. Hospital(s) or medical facilities need to be informed, before-hand, of the possibility of H<sub>2</sub>S gas poisoning – no matter how remote the possibility is.
6. Notify emergency room personnel that the victim(s) has been exposed to H<sub>2</sub>S gas.

Besides basic first aid, everyone on location should have a good working knowledge of artificial respiration.

Revised CM 6/27/2012

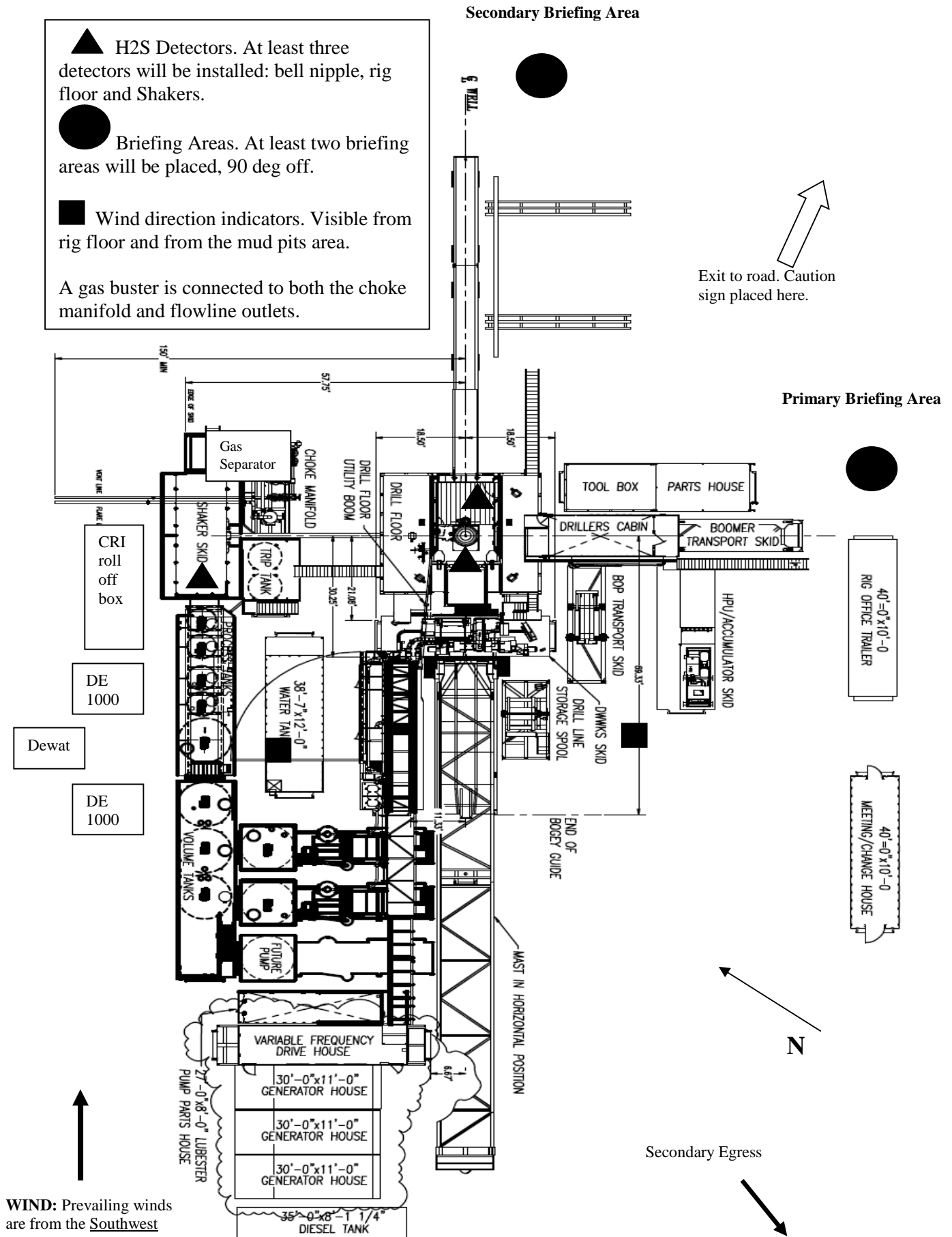


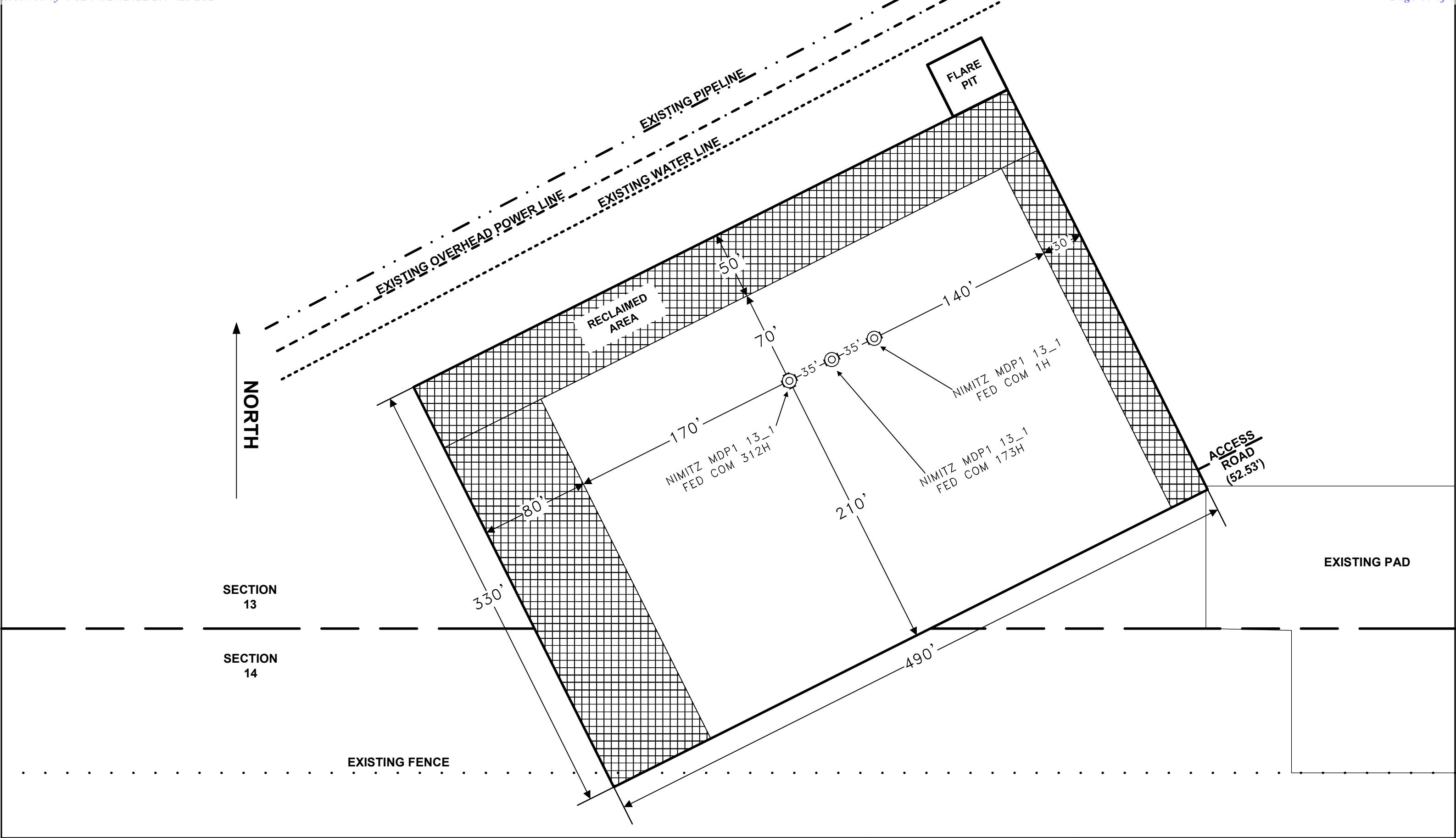
## **Permian Drilling Hydrogen Sulfide Drilling Operations Plan Nimitz MDP1 13\_1 Fed Com 312H**

Open drill site. No homes or buildings are near the proposed location.

### **1. Escape**

Personnel shall escape upwind of wellbore in the event of an emergency gas release. Escape can take place through the lease road on the Southeast side of the location. Personnel need to move to a safe distance and block the entrance to location. If the primary route is not an option due to the wind direction, then a secondary egress route should be taken.





REVISION BLOCK						ENGINEERING RECORD		RIG DIAGRAM V-DOOR EAST PAD SNDDNS-1308 NIMITZ MDP1 13_1 FED COM 312H, 173H, 1H SECTION 13 & 24, TOWNSHIP 24S, RANGE 30E EDDY COUNTY, NEW MEXICO
NO.	DATE	DESCRIPTION	BY	CHK	APP	BY	DATE	
						RMTII	06/26/2020	



# SITE PLAN

SNDDNS-1308  
SEC. 13 & SEC. 24 TWP. 24-S RGE. 30-E  
SURVEY: N.M.P.M.

COUNTY: EDDY  
OPERATOR: OXY USA, INC.

U.S.G.S. TOPOGRAPHIC MAP: BIG SINKS, N.M.  
FAA PERMIT NEEDED: NO

TANK BATTERY  
RECLAMATION  
30' TOP SOIL  
20' DISTURBANCE AREA



100' 0' 100' 200'  
SCALE: 1" = 200'

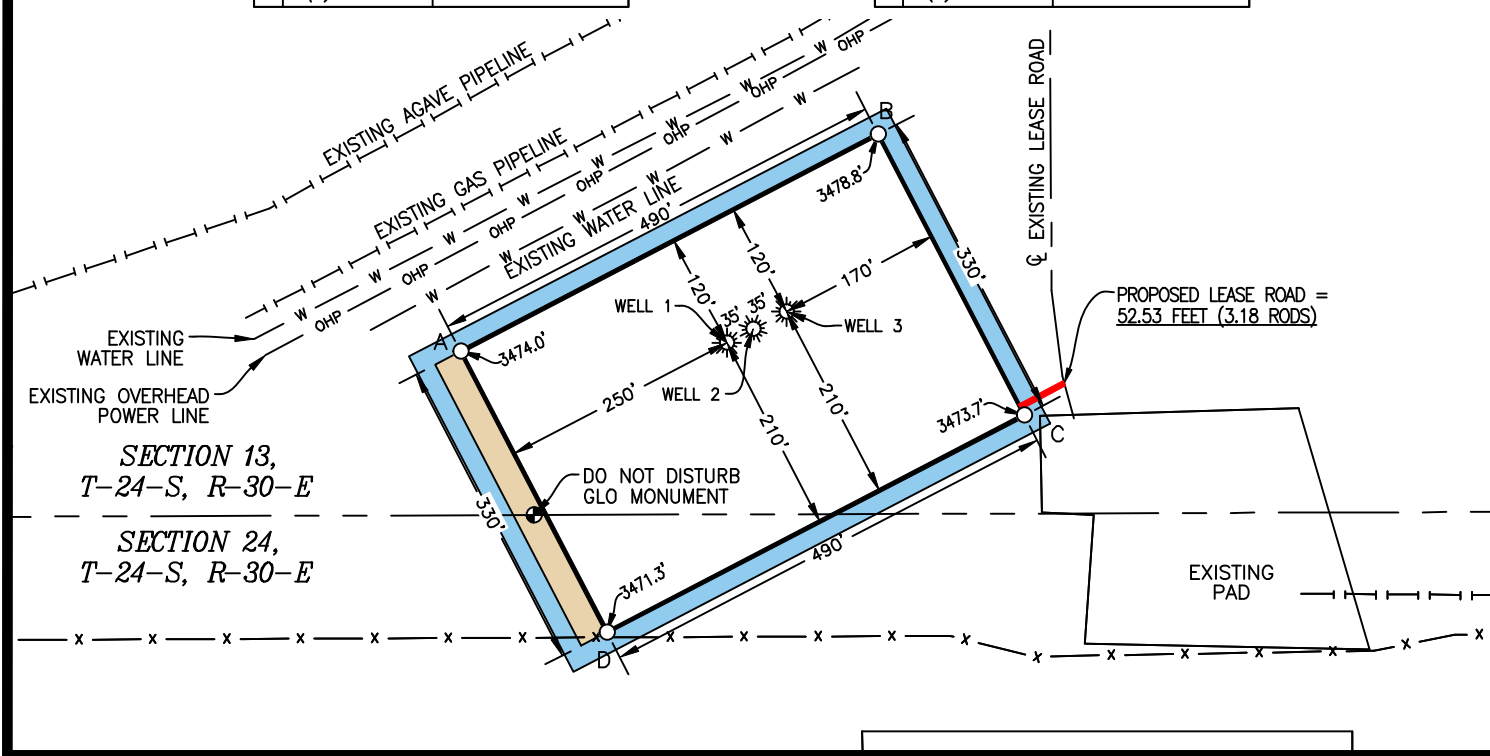
WELL 1  
NIMITZ MDP1 13\_1 FED COM 312H  
OXY USA, INC.  
179' FSL 2,475' FEL, SECTION 13  
NAD 83, SPCS NM EAST  
X:695869.01' / Y:440898.02'  
LAT:32.21111814N / LON:103.83367987W  
NAD 27, SPCS NM EAST  
X:654684.80' / Y:440839.21'  
LAT:32.21099478N / LON:103.83319563W  
ELEVATION = 3,475'

WELL 2  
NIMITZ MDP1 13\_1 FED COM 173H  
OXY USA, INC.  
195' FSL 2,444' FEL, SECTION 13  
NAD 83, SPCS NM EAST  
X:695900.01' / Y:440914.26'  
LAT:32.21116239N / LON:103.83357942W  
NAD 27, SPCS NM EAST  
X:654715.80' / Y:440855.45'  
LAT:32.21103903N / LON:103.83309518W  
ELEVATION = 3,475'

WELL 3  
NIMITZ MDP1 13\_1 FED COM 1H  
OXY USA, INC.  
211' FSL 2,413' FEL, SECTION 13  
NAD 83, SPCS NM EAST  
X:695931.15' / Y:440930.39'  
LAT:32.21120632N / LON:103.83347848W  
NAD 27, SPCS NM EAST  
X:654746.94' / Y:440871.57'  
LAT:32.21108296N / LON:103.83299425W  
ELEVATION = 3,475'

NAD 83			
A	E:(X)695591.88 N:(Y)440889.12	LAT:32.21109722 LON:-103.83457604	
B	E:(X)696026.57 N:(Y)441115.27	LAT:32.21171331 LON:-103.83316717	
C	E:(X)696178.85 N:(Y)440822.63	LAT:32.21090694 LON:-103.83267922	
D	E:(X)695744.19 N:(Y)440596.37	LAT:32.21029057 LON:-103.83408799	

NAD 27			
A	E:(X)654407.67 N:(Y)440830.31	LAT:32.21097386 LON:-103.83409177	
B	E:(X)654842.37 N:(Y)441056.45	LAT:32.21158995 LON:-103.83268293	
C	E:(X)654994.64 N:(Y)440763.82	LAT:32.21078358 LON:-103.83219502	
D	E:(X)654559.97 N:(Y)440537.56	LAT:32.21016719 LON:-103.83360376	



05/18/2020 06/05/2020  
DATE SURVEYED DATE DRAWN

## BASIS OF BEARING

ALL BEARINGS AND COORDINATES REFER TO NAD 83, NEW MEXICO STATE PLANE COORDINATE SYSTEM, EAST ZONE, U.S. SURVEY FEET. (ALL BEARINGS, DISTANCES, COORDINATES AND AREAS ARE GRID MEASUREMENTS UTILIZING A COMBINED SCALE FACTOR OF 0.99977392 CONVERGENCE OF 0.26578056°.)

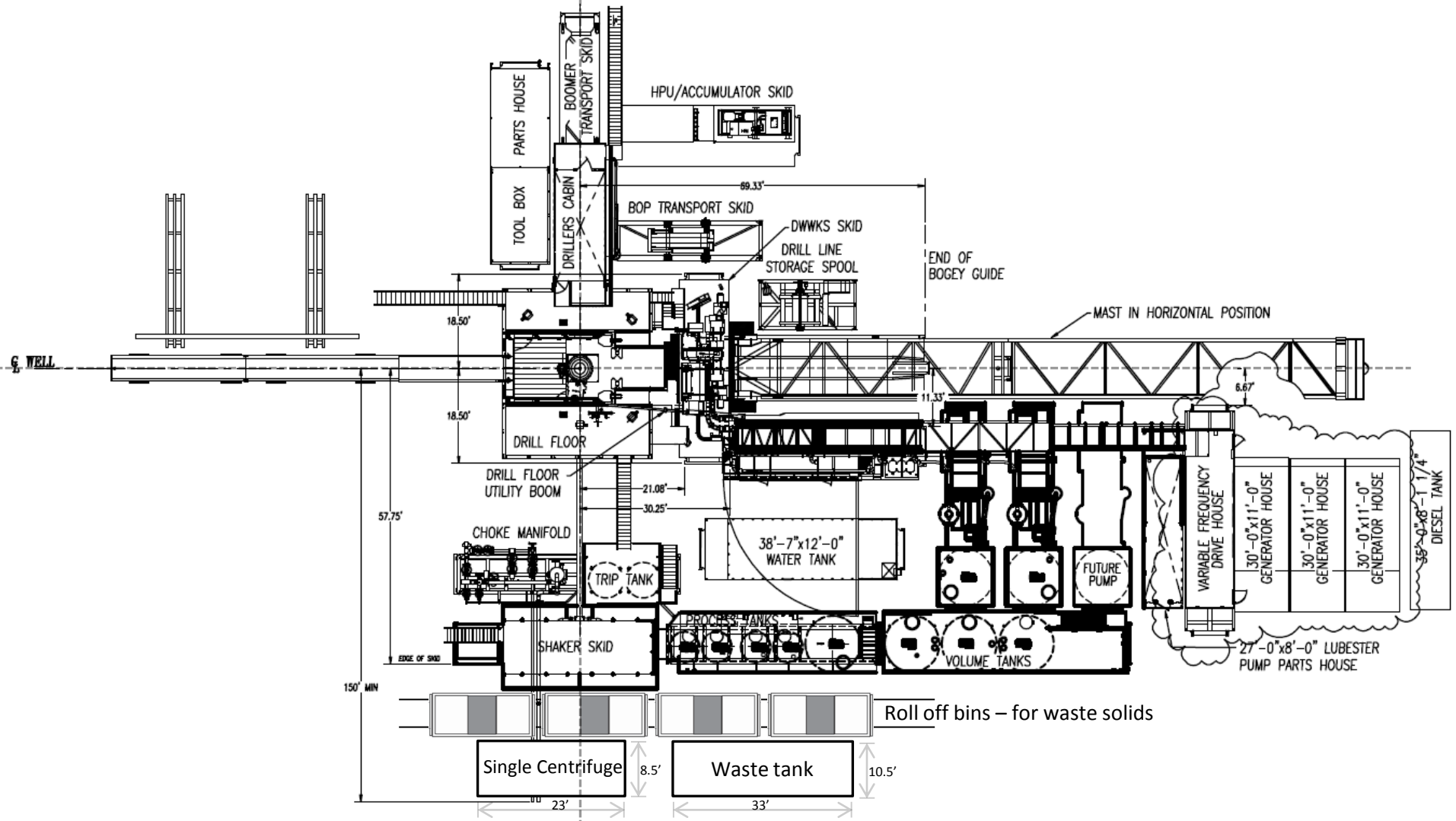
LEGEND			
—	EXISTING ROAD	—	OHP — OVERHEAD POWER
—	PROPOSED ROAD	—	FENCE
—	SURFACE SITE EDGE	—	SECTION LINE
—	EXIST. PIPELINE	—	PROPERTY LINE
—		—	WATER LINE
—		—	SALT WATER LINE
⊙	MONUMENT	●	QUARTER SPLIT

THIS DOCUMENT IS NOT TO BE USED FOR  
CONSTRUCTION, BIDDING, RECORDATION,  
CONVEYANCE, SALE OR THE BASIS FOR THE  
ISSUANCE OF A PERMIT.

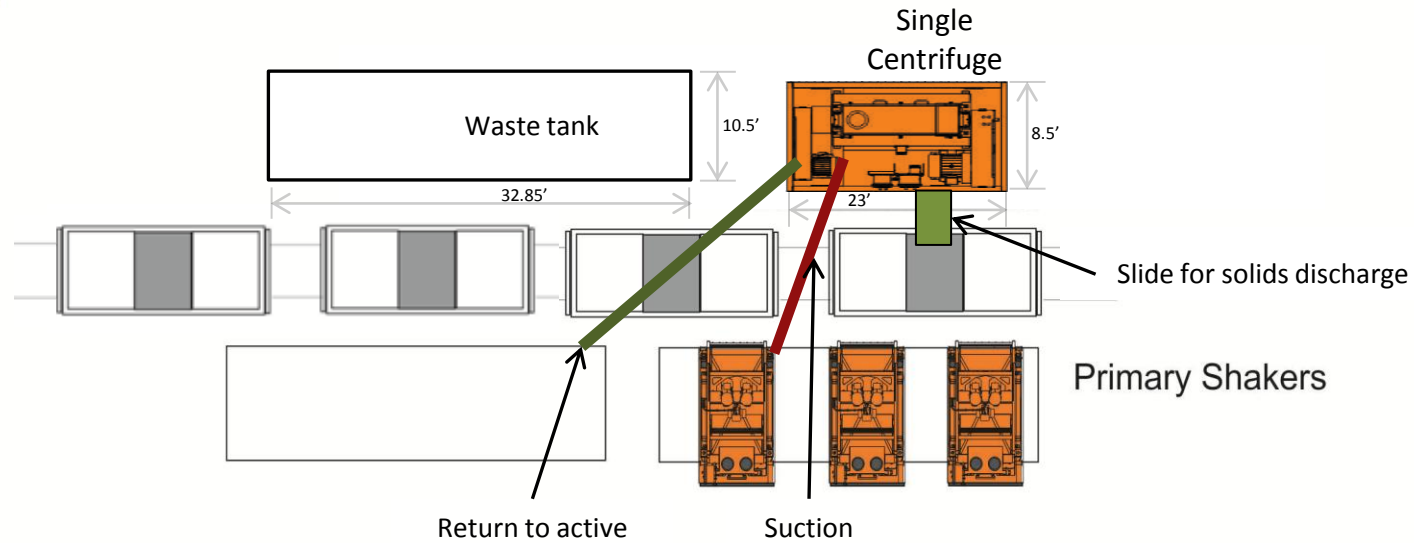


PREPARED BY:  
R-SQUARED GLOBAL, LLC  
1309 LOUISVILLE AVENUE,  
MONROE, LA 71201  
318-323-6900 OFFICE  
JOB No. R4073\_002

Oxy Single Centrifuge  
Closed Loop System – New  
Mexico Flex III  
May 28, 2013



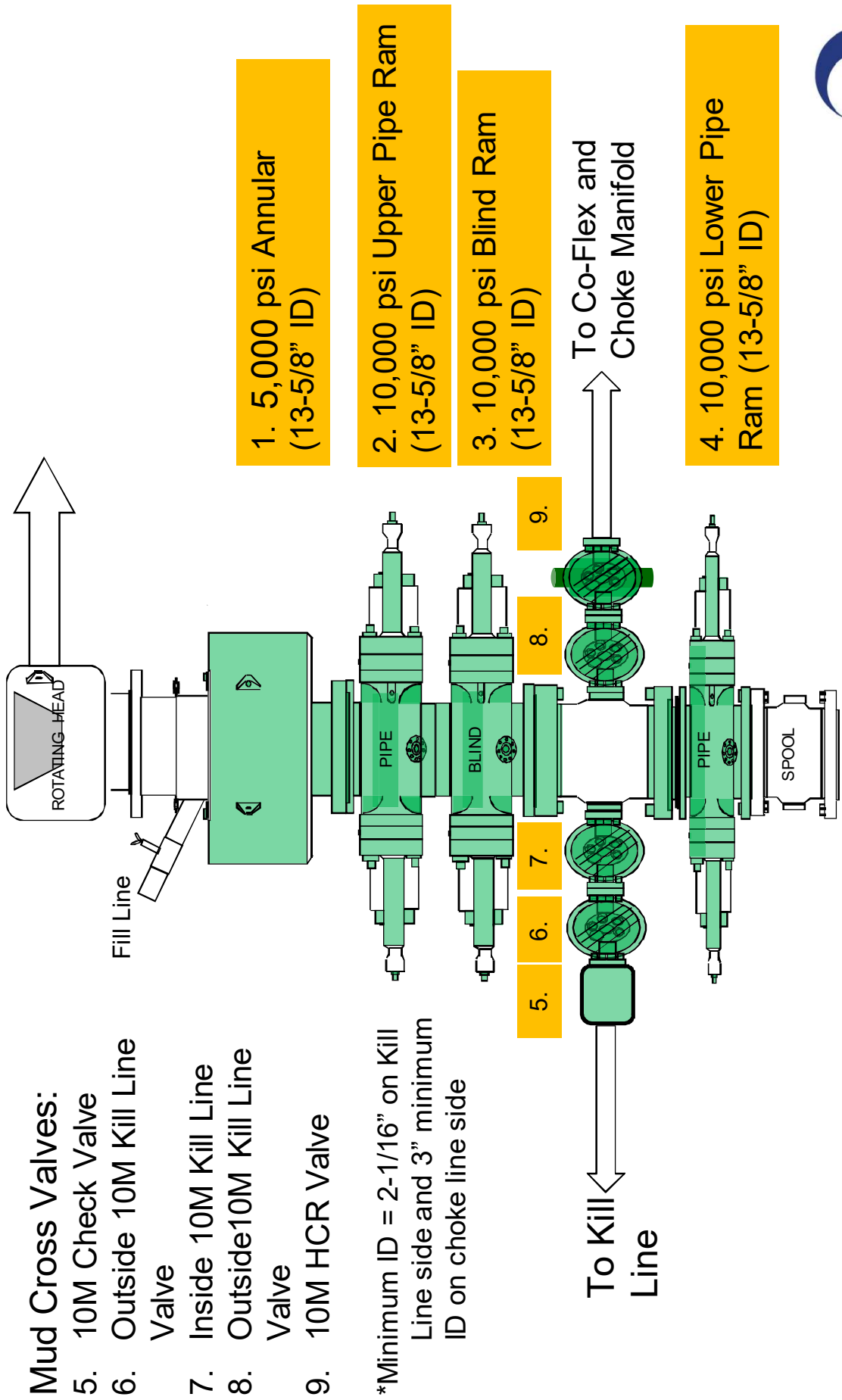
Oxy



Oxy Single Centrifuge  
Closed Loop System – New  
Mexico Flex III

May 28, 2013

# 5/10M BOP Stack





**District I**  
1625 N. French Dr., Hobbs, NM 88240  
Phone:(575) 393-6161 Fax:(575) 393-0720  
**District II**  
811 S. First St., Artesia, NM 88210  
Phone:(575) 748-1283 Fax:(575) 748-9720  
**District III**  
1000 Rio Brazos Rd., Aztec, NM 87410  
Phone:(505) 334-6178 Fax:(505) 334-6170  
**District IV**  
1220 S. St Francis Dr., Santa Fe, NM 87505  
Phone:(505) 476-3470 Fax:(505) 476-3462

**State of New Mexico**  
**Energy, Minerals and Natural Resources**  
**Oil Conservation Division**  
**1220 S. St Francis Dr.**  
**Santa Fe, NM 87505**

COMMENTS  
  
Action 32636

COMMENTS

Operator: OXY USA INC P.O. Box 4294 Houston, TX 772104294	OGRID: 16696
	Action Number: 32636
	Action Type: [C-101] BLM - Federal/Indian Land Lease (Form 3160-3)

COMMENTS

Created By	Comment	Comment Date
kpickford	KP GEO Review 6/22/2021	6/22/2021

**District I**

1625 N. French Dr., Hobbs, NM 88240  
 Phone:(575) 393-6161 Fax:(575) 393-0720

**District II**

811 S. First St., Artesia, NM 88210  
 Phone:(575) 748-1283 Fax:(575) 748-9720

**District III**

1000 Rio Brazos Rd., Aztec, NM 87410  
 Phone:(505) 334-6178 Fax:(505) 334-6170

**District IV**

1220 S. St Francis Dr., Santa Fe, NM 87505  
 Phone:(505) 476-3470 Fax:(505) 476-3462

**State of New Mexico**  
**Energy, Minerals and Natural Resources**  
**Oil Conservation Division**  
**1220 S. St Francis Dr.**  
**Santa Fe, NM 87505**

CONDITIONS

Action 32636

**CONDITIONS**

Operator: OXY USA INC P.O. Box 4294 Houston, TX 772104294	OGRID:
	16696
	Action Number:
	32636
Action Type:	
[C-101] BLM - Federal/Indian Land Lease (Form 3160-3)	

**CONDITIONS**

Created By	Condition	Condition Date
kpickford	Will require administrative order for non-standard spacing unit	6/22/2021
kpickford	Notify OCD 24 hours prior to casing & cement	6/22/2021
kpickford	Will require a File As Drilled C-102 and a Directional Survey with the C-104	6/22/2021
kpickford	Once the well is spud, to prevent ground water contamination through whole or partial conduits from the surface, the operator shall drill without interruption through the fresh water zone or zones and shall immediately set in cement the water protection string	6/22/2021
kpickford	Cement is required to circulate on both surface and intermediate1 strings of casing	6/22/2021
kpickford	Oil base muds are not to be used until fresh water zones are cased and cemented providing isolation from the oil or diesel. This includes synthetic oils. Oil based mud, drilling fluids and solids must be contained in a steel closed loop system	6/22/2021