

Well Name: LONG ARROYO MQ FEDERAL COM	Well Location: T14S / R27E / SEC 25 / SENW /	County or Parish/State: CHAVES / NM
Well Number: 1	Type of Well: CONVENTIONAL GAS WELL	Allottee or Tribe Name:
Lease Number: NMNM19181	Unit or CA Name: LONG ARROYO MQ FEDERAL CO	Unit or CA Number: NMNM72094
US Well Number: 300056066600S1	Well Status: Producing Gas Well	Operator: EOG RESOURCES INCORPORATED

Accepted for record – NMOCD gc 7/20/2021

Notice of Intent

Type of Submission: Notice of Intent	Type of Action Plug and Abandonment
Date Sundry Submitted: 07/08/2021	Time Sundry Submitted: 04:26
Date proposed operation will begin: 07/29/2021	
Procedure Description: Please see attached. Thank you.	

Surface Disturbance

Is any additional surface disturbance proposed?: No

NOI Attachments

Procedure Description
Long_Arroyo_MQ_Federal_Com_1_7_8_21_20210708162539.pdf

Conditions of Approval

Specialist Review
Conditons_of_Approval_20210719120542.pdf
General_Conditions_of_Approval_20210719120542.pdf

Well Name: LONG ARROYO MQ FEDERAL COM	Well Location: T14S / R27E / SEC 25 / SENW /	County or Parish/State: CHAVES / NM
Well Number: 1	Type of Well: CONVENTIONAL GAS WELL	Allottee or Tribe Name:
Lease Number: NMNM19181	Unit or CA Name: LONG ARROYO MQ FEDERAL CO	Unit or CA Number: NMNM72094
US Well Number: 300056066600S1	Well Status: Producing Gas Well	Operator: EOG RESOURCES INCORPORATED

Operator Certification

I certify that the foregoing is true and correct. Title 18 U.S.C. Section 1001 and Title 43 U.S.C. Section 1212, make it a crime for any person knowingly and willfully to make to any department or agency of the United States any false, fictitious or fraudulent statements or representations as to any matter within its jurisdiction. Electronic submission of Sundry Notices through this system satisfies regulations requiring a submission of Form 3160-5 or a Sundry Notice.

Operator Electronic Signature: TINA HUERTA	Signed on: JUL 08, 2021 04:26 PM
Name: EOG RESOURCES INCORPORATED	
Title: Regulatory Specialist	
Street Address: 104 SOUTH FOURTH STREET	
City: Artesia	State: NM
Phone: (575) 748-4168	
Email address: tina_huerta@eogresources.com	

Field Representative

Representative Name:		
Street Address:		
City:	State:	Zip:
Phone:		
Email address:		

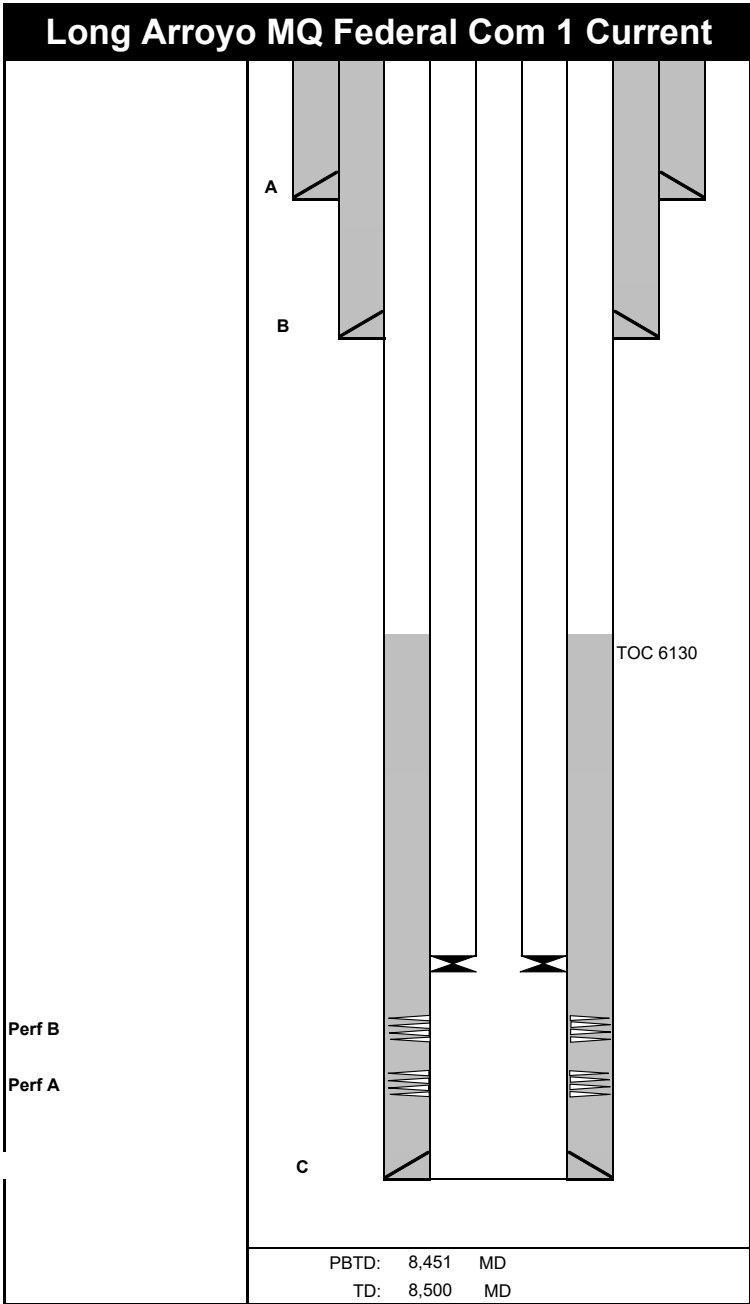
BLM Point of Contact

BLM POC Name: JENNIFER SANCHEZ	BLM POC Title: Petroleum Engineer
BLM POC Phone: 5756270237	BLM POC Email Address: j1sanchez@blm.gov
Disposition: Approved	Disposition Date: 07/19/2021
Signature: Jennifer Sanchez	

EOG Resources, Inc. plans to plug and abandon this well as follows:

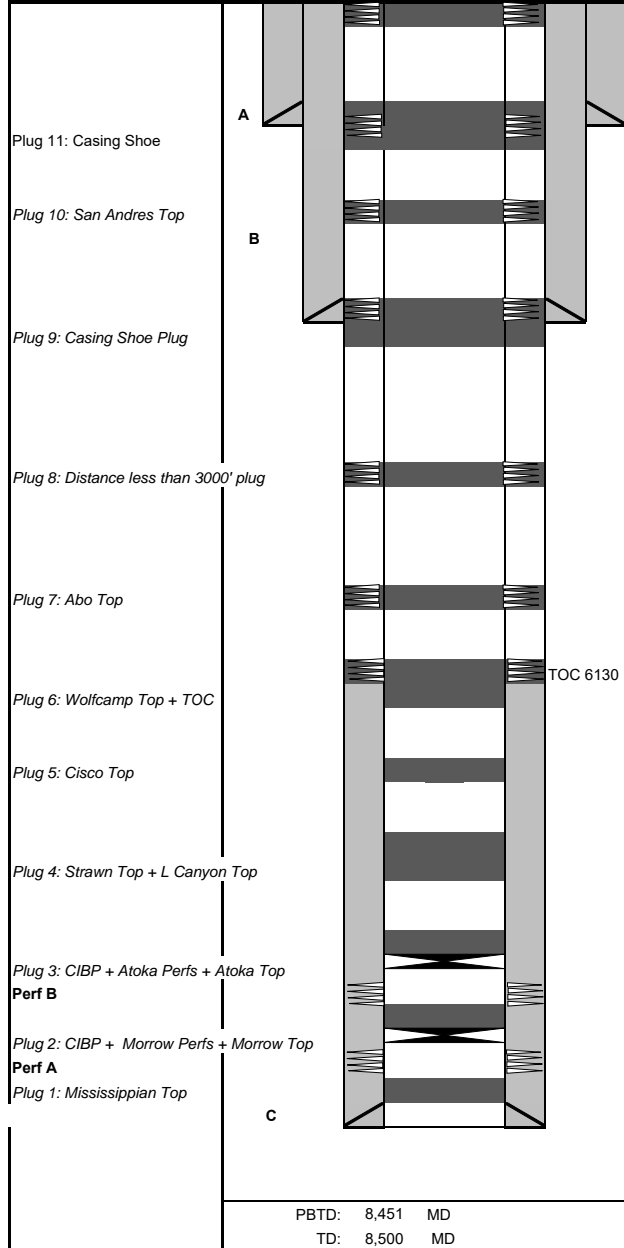
1. MIRU all safety equipment as needed. NU BOP. POOH with production equipment.
2. Spot an 18 sx Class H cement plug from 8400 ft – 8163 ft. WOC and tag. This will cover Mississippian top.
3. Set a CIBP at 8120 ft with 8 sx Class H cement on top to 8015 ft. WOC and tag. This will cover Morrow perms and top.
4. Set a CIBP at 7990 ft with 16 sx Class H cement on top to 7780 ft. WOC and tag. This will cover Atoka top and perms.
5. Spot a 25 sx Class H cement plug from 7643 ft – 7314 ft. This will cover Strawn and L Canyon tops.
6. Spot a 25 sx Class C cement plug from 6992 ft – 6624 ft. This will cover Cisco top.
7. Perforate at 6180 ft. Spot a 32 sx Class C cement plug from 6180 ft – 6012 ft. WOC and tag. This will cover Wolfcamp top and TOC.
8. Perforate at 5046 ft. Spot a 37 sx Class C cement plug from 5046 ft – 4893 ft. WOC and tag. This will cover Abo top.
9. Perforate at 2000 ft. Spot a 30 sx Class C cement plug from 2000 ft – 1876 ft. WOC and tag. Distance less than 3000 ft plug.
10. Perforate at 1654 ft. Spot a 30 sx Class C cement plug from 1654 ft – 1534 ft. WOC and tag. This will cover casing shoe.
11. Perforate at 1180 ft. Spot a 31 sx Class C cement plug from 1180 ft – 1059 ft. WOC and tag. This will cover San Andres top.
12. Perforate at 321 ft. Spot a 30 sx Class C cement plug from 321 ft – 204 ft. WOC and tag. This will cover casing shoe.
13. Perforate at 54 ft. Spot a 14 sx Class C cement plug from 54 ft up to surface. WOC and tag. Back fill as needed.
14. Cut off wellhead and install dry hole marker. Clean location as per regulated.

Wellbore schematics attached



Sec-TWN-RNG: 25-14S-27E		API: 30-005-60666							
FOOTAGES: 1650'FNL & 1650'FWI		GL: 3460							
		KB:							
CASING DETAIL									
#	HOLE SIZE	SIZE	WGHT	GRADE	Top	Bottom	Sx Cmt	Circ/TOC	TOC Method
A	17 1/2	13 3/8	48	H-40	0	271	425	Circ	
B	12 1/4	8 5/8	24	K-55	0	1,604	840	Circ	
C	7 7/8	4 1/2	10.5, 11.6	K-55	0	8,500	650	6130	Temp Survey
FORMATION TOPS									
		Formation	Top			Formation	Top		
		San Andres	1130						
		Abo	4996						
		Wolfcamp	6110						
		Cisco	6942						
		L Canyon	7402						
		Strawn	7593						
		Atoka	7990						
		Morrow	8096						
		Mississippian	8297						
TUBING DETAIL									
#	Joints	Description	Length	OD	ID	Grade	Wt (lb/ft):	Top (ftKB):	Btm (ftKB):
		2 7/8 tubing and packer						7,959	
Perforation Detail									
	Formation	Top	Bottom		Treatment				
A	Morrow	8,140	8,161		Acidize w/1000g 7-1/2% MSA with ball sealers				
					Frac w/10,000g MS fluid, 5000g CO2, 25,000# mesh and 20/40 sand				
B	Atoka	8,001	8,008		No treatment				
Prepared by: TH									

Long Arroyo MQ Federal Com 1 Proposed



Sec-TWN-RNG: 25-14S-27E		API: 30-005-60666							
FOOTAGES: 1650'FNL & 1650'FWL		GL: 3460							
		KB:							
CASING DETAIL									
#	HOLE SIZE	SIZE	WGHT	GRADE	Top	Bottom	Sx Cmt	Circ/TOC	TOC Method
A	17 1/2	13 3/8	48	H-40	0	271	425	Circ	
B	12 1/4	8 5/8	24	K-55	0	1,604	840	Circ	
C	7 7/8	4 1/2	10.5, 11.6	K-55	0	8,500	650	6130	Temp Survey
FORMATION TOPS									
		Formation	Top			Formation	Top		
		San Andres	1130						
		Abo	4996						
		Wolfcamp	6110						
		Cisco	6942						
		L Canyon	7402						
		Strawn	7593						
		Atoka	7990						
		Morrow	8096						
		Mississippian	8297						
Perforation Detail									
	Formation	Top	Bottom		Treatment				
A	Morrow	8,140	8,161		Acidize w/1000g 7-1/2% MSA with ball sealers				
					Frac w/10,000g MS fluid, 5000g CO2, 25,000# mesh and 20/40 sand				
B	Atoka	8,001	8,008		No treatment				
Plugs									
#	SX	Class	Top	Bottom	Δ	Notes	Tag		
1	18	H	8163	8400	237	Mississippian Top	Y		
2	8	H	8015	8120	105	Morrow Perfs + Morrow Top	Y		
3	16	H	7,780	7990	210	Atoka Perfs + Atoka Top	Y		
4	25	H	7314	7643	329	Strawn Top + L Canyon Top	N		
5	25	C	6624	6992	368	Cisco Top	N		
6	32	C	6,012	6180	168	Wolfcamp Top + TOC	Y		
7	37	C	4893	5046	153	Abo Top	Y		
8	30	C	1876	2000	124	Distance Less than 3000' Plug	Y		
9	30	C	1,534	1654	120	Casing Shoe	Y		
10	31	C	1059	1180	121	San Andres Top	Y		
11	30	C	204	321	117	Casing Shoe	Y		
12	14	C	0	54	54	Surface Plug	Y		
Prepared by: Hiram C 3/19/21									

**Long Arroyo MQ Federal Com 1
30-005-60666
EOG Resources Incorporated
July 19, 2021
Conditions of Approval**

1. Operator shall place a balanced Class H cement plug from 8,400'-8,163' as proposed. WOC and TAG.
2. Operator shall place CIBP at 8,120' and places 8 sx of Class H cement on top as proposed. WOC and TAG.
3. Operator shall place CIBP at 7,951' (50'-100' above top most perf) and places 25 sx of Class H cement on top. WOC and TAG.
4. Operator shall place a balanced Class H cement plug from 7,643'-7,314' as proposed.
5. Operator shall place a balanced Class C cement plug from 6,992'-6,624' as proposed.
6. Operator shall perf and squeeze at 6,180'. Operator shall place a balanced Class C cement plug from 6,180'-6,012' to seal the top of the Wolfcamp as proposed. WOC and TAG.
7. Operator shall perf and squeeze at 5,046'. Operator shall place a balanced Class C cement plug from 5,046'-4,893' to seal the top of the Abo as proposed. WOC and TAG.
8. Operator shall perf and squeeze at 2,000'. Operator shall place a balanced Class C cement plug from 2,000'-1,876' as proposed. WOC and TAG.
9. Operator shall perf and squeeze at 1,654'. Operator shall place a balanced Class C cement plug from 1,654'-1,554' to seal the 8-5/8" casing shoe. WOC and TAG.
10. Operator shall perf and squeeze at 1,180'. Operator shall place a balanced Class C cement plug from 1,180'-1,059' as proposed. WOC and TAG.
11. Operator shall perf and squeeze at 321'. Operator shall place a balanced Class C cement plug from 321'-221' to seal the 13-3/8" casing shoe and the top of the Yates. WOC and TAG.

12. Operator shall perf and squeeze at 100'. Operator shall place a balanced Class C cement plug from 100' - surface as proposed.

13. See Attached for general plugging stipulations.

JAM 07192021

BUREAU OF LAND MANAGEMENT
Roswell Field Office
2909 W. Second Street
Roswell, New Mexico 88201
575-627-0272

General Requirements for Plug Backs

Failure to comply with the following Conditions of Approval may result in a Notice of Incidents of Noncompliance (INC) in accordance with 43 CFR 3163.1.

1. Plugging operations shall commence within **ninety (90)** days from this approval.

If you are unable to plug back the well by the 90th day provide this office, prior to the 90th day, with the reason for not meeting the deadline and a date when we can expect the well to be plugged back. Failure to do so will result in enforcement action.

2. **Notification:** Contact the appropriate BLM office at least 24 hours prior to the commencing of any plug back operations. Call 575-627-0205.

3. **Blowout Preventers:** A blowout preventer (BOP), as appropriate, shall be installed before commencing any plugging operation. The BOP must be installed and maintained as per API and manufacturer recommendations. The minimum BOP requirement is a 2M system for a well not deeper than 9,090 feet; a 3M system for a well not deeper than 13,636 feet; and a 5M system for a well not deeper than 22,727 feet.

4. **Mud Requirement:** Mud shall be placed between all plugs. Minimum consistency of plugging mud shall be obtained by mixing at the rate of 25 sacks (50 pounds each) of gel per 100 barrels of **brine** water. Minimum nine (9) pounds per gallon.

5. **Cement Requirement:** Sufficient cement shall be used to bring any required plug to the specified depth and length. Any given cement volumes on the proposed plugging procedure are merely estimates and are not final. Unless specific approval is received, no plug except the surface plug shall be less than 25 sacks of cement. Any plug that requires a tag will have a minimum WOC time of 4 hours.

In lieu of a cement plug across perforations in a cased hole (not for any other plugs), a bridge plug set within 50 feet to 100 feet above the perforations shall be capped with 25 sacks of cement.

Before pumping cement on top of CIBP, tag will be required to verify depth. Based on depth, a tag of the cement may be deemed necessary.

Unless otherwise specified in the approved procedure, the cement plug shall consist of either **Neat Class "C"**, for up to 7,500 feet of depth or **Neat Class "H"**, for deeper than 7,500 feet plugs.

6. **Subsequent Plug back Reporting:** Within 30 days after plug back work is completed, file one original and three copies of the Subsequent Report, Form 3160-5 to BLM. The report should give in detail the manner in which the plug back work was carried out, the extent (by depths) of cement plugs placed, and the size and location (by depths) of casing left in the well. **Show date work was completed.**

7. **Trash:** All trash, junk and other waste material shall be contained in trash cages or bins to prevent scattering and will be removed and deposited in an approved sanitary landfill. Burial on site is not permitted.

District I
1625 N. French Dr., Hobbs, NM 88240
Phone:(575) 393-6161 Fax:(575) 393-0720
District II
811 S. First St., Artesia, NM 88210
Phone:(575) 748-1283 Fax:(575) 748-9720
District III
1000 Rio Brazos Rd., Aztec, NM 87410
Phone:(505) 334-6178 Fax:(505) 334-6170
District IV
1220 S. St Francis Dr., Santa Fe, NM 87505
Phone:(505) 476-3470 Fax:(505) 476-3462

State of New Mexico
Energy, Minerals and Natural Resources
Oil Conservation Division
1220 S. St Francis Dr.
Santa Fe, NM 87505

CONDITIONS

Action 36988

CONDITIONS

Operator: EOG RESOURCES INC P.O. Box 2267 Midland, TX 79702	OGRID: 7377
	Action Number: 36988
	Action Type: [C-103] NOI Plug & Abandon (C-103F)

CONDITIONS

Created By	Condition	Condition Date
gcordero	None	7/20/2021