

Well Name: WTG FED COM	Well Location: T26S / R29E / SEC 27 / NENW /	County or Parish/State:
Well Number: 235H	Type of Well: CONVENTIONAL GAS WELL	Allottee or Tribe Name:
Lease Number: NMNM38636	Unit or CA Name:	Unit or CA Number:
US Well Number: 3001548332	Well Status: Approved Application for Permit to Drill	Operator: TAP ROCK OPERATING LLC

Notice of Intent

Type of Submission: Notice of Intent	Type of Action Other
Date Sundry Submitted: 07/07/2021	Time Sundry Submitted: 04:39
Date proposed operation will begin: 07/07/2021	

Procedure Description: Tap Rock would like to alter the casing plan for the WTG Fed Com 235H. Tap Rock is requesting permission to: Run one of the two options listed in the attached drill plan - A three or four string design. Alter the second intermediate string from 7.625 inch 29.7 lb P-110 W-513 to 7.625 inch 29.7 P-110 W-441 casing. Casing spec has been attached. Alter the production casing string from 5.5 inch 20 lb P-110 TXP by 5.0 inch 18 lb P-110 W-521 to 5.5 inch 20 lb P-110 TXP by 5.5 inch 20 lb P-110 W-441 casing. Casing spec has been attached. Tap Rock would also like to have the option of running a DV tool during cementing operations. If no DV tool is ran, we would like to cement the intermediate section in a single stage.

Surface Disturbance

Is any additional surface disturbance proposed?: No

NOI Attachments

Procedure Description

- Tap_Rock_Operating___WTG_Fed_Com_235H___Plan_1_RPT_20210707161706.pdf
- 5.5_20_P110_TXP_20210707161654.pdf
- 5.5_20_P110_IC_W441_20210707161654.pdf
- 7.625_29.7_P110_IC_W441_20210707161654.pdf
- WTG_Fed_Com_235H_APD_6.21.21_20210707161646.pdf

Well Name: WTG FED COM	Well Location: T26S / R29E / SEC 27 / NENW /	County or Parish/State:
Well Number: 235H	Type of Well: CONVENTIONAL GAS WELL	Allottee or Tribe Name:
Lease Number: NMNM38636	Unit or CA Name:	Unit or CA Number:
US Well Number: 3001548332	Well Status: Approved Application for Permit to Drill	Operator: TAP ROCK OPERATING LLC

Operator Certification

I certify that the foregoing is true and correct. Title 18 U.S.C. Section 1001 and Title 43 U.S.C. Section 1212, make it a crime for any person knowingly and willfully to make to any department or agency of the United States any false, fictitious or fraudulent statements or representations as to any matter within its jurisdiction. Electronic submission of Sundry Notices through this system satisfies regulations requiring a submission of Form 3160-5 or a Sundry Notice.

Operator Electronic Signature: BILL RAMSEY **Signed on:** JUL 07, 2021 04:39 PM

Name: TAP ROCK OPERATING LLC

Title: Regulatory Analyst

Street Address: 523 PARK POINT DRIVE SUITE 200

City: GOLDEN **State:** CO

Phone: (720) 360-4028

Email address: BRAMSEY@TAPRK.COM

Field Representative

Representative Name:

Street Address:

City: **State:** **Zip:**

Phone:

Email address:

BLM Point of Contact

BLM POC Name: CHRISTOPHER WALLS **BLM POC Title:** Petroleum Engineer

BLM POC Phone: 5752342234 **BLM POC Email Address:** cwalls@blm.gov

Disposition: Approved **Disposition Date:** 07/29/2021

Signature: Chris Walls



Drilling Operations Plan
WTG Fed Com 235H
Tap Rock Operating, LLC
SHL 265' FNL & 1895' FWL, Sec. 27
BHL 30' FSL & 1590' FWL, Sec. 34
T. 26S., R. 29E, Eddy County, NM

Elevation above Sea Level: 2886'

DRILLING PROGRAM

1. Estimated Tops

Formation	TVD	MD	Lithologies	Bearing
Quaternary Deposits	0	0	Surface	None
Rustler Anhydrite	680	680		Salt
Salado	1180	1180	Salt	Salt
Base Salt	2725	2728		Salt
Lamar	2935	2939	Limestone	None
Bell Canyon	2970	2974	Sandstone	Hydrocarbons
Cherry Canyon	3870	3876	Sandstone	Hydrocarbons
Brushy Canyon	5085	5094	Sandstone	Hydrocarbons
Bone Spring	6695	6707	Limestone	Hydrocarbons
1st Bone Spring	7600	7612	Sandstone	Hydrocarbons
2nd Bone Spring	7870	7882	Sandstone	Hydrocarbons
3rd Bone Spring	8850	8862	Sandstone	Hydrocarbons
KOP	10330	10,341	Sandstone	Hydrocarbons
Wolfcamp	9800	9,812	Shale	Hydrocarbons
TD	10854	18110	Shale	Hydrocarbons

2. Notable Zones

Wolfcamp is the target formation.

3. Pressure Control

Pressure Control Equipment (See Schematics):

A 15,000', 5,000 psi BOP stack consisting of 3 rams with 2 pipe rams, 1 blind ram, and 1 annular preventer will be used below surface casing to TD. See attachments for BOP and choke manifold diagrams. Also present will be an accumulator that meets the requirements of Onshore Order #2 for the pressure rating of the BOP stack. A rotating head will also be installed as needed. BOP will be inspected and operated as recommended in Onshore Order #2. A top drive check valve and sub equipped with a full opening valve sized to fit the drill pipe and collars will be available on the rig floor in the open position. The wellhead will be a multi-bowl speed head.

BOP Test procedure will be as follows:



Drilling Operations Plan
WTG Fed Com 235H
Tap Rock Operating, LLC
SHL 265' FNL & 1895' FWL, Sec. 27
BHL 30' FSL & 1590' FWL, Sec. 34
T. 26S., R. 29E, Eddy County, NM

After surface casing is set and the BOP is nipped up, the BOP pressure tests will be made with a third party tester to 250 psi low, 5000 psi high, and the annular preventer will be tested to 2,500 psi. The BOP will be tested in this manner after nipple-up if any break of the stack occurs.

Variance Requests:

Tap Rock requests a variance to run a multi-bowl speed head for setting the Intermediate 1, Intermediate 2, and Production Strings. Tap Rock requests a variance to drill this well using a co-flex line between the BOP and choke manifold. Certification for proposed co-flex hose is attached. The hose is not required by the manufacturer to be anchored. In the event the specific hose is not available, one of equal or higher rating will be used. Tap Rock requests a variance to have the option of batch drilling this well with other wells on the same pad. In the event that this well is batch drilled, after drilling surface, 1st intermediate, and 2nd intermediate hole sections and cementing 2nd intermediate casing, a 10M dry hole cap with bleed off valve will be installed. The rig will then walk to another well on the pad. When the rig returns to this well and BOPs are installed, the operator will perform a full BOP test.

Tap Rock requests approval to possibly utilize a spudder rig to drill and set casing for the surface interval on this well. The spudder rig will be possibly utilized in order to reduce cost and save time. The wellhead will be installed and tested as soon as the surface casing is cut off per the existing COAs. A blind flange with the same pressure rating as the wellhead will be installed on the well. Once the spudder rig is removed, Tap Rock will secure the wellhead area by placing a guard rail around the cellar. Pressure will be monitored and a means for intervention will be maintained while the drilling rig is not over the well. Spudder rig operations are expected to take 2-3 days per well. Three wells on the pad will have surface casing set by the spudder rig as a part of this operation. The BLM will be notified 24 hours prior to commencing spudder rig operations. Within 90 days of the departure of the spudder rig, drilling operations will recommence on these wells. This rig will have a BOP stack equal or greater to the pressure rating required in the COAs. The BLM will be notified 24 hours before the larger rig moves on the pre-set wells. Tap Rock will have supervision on the spudder rig to ensure compliance with all BLM and NMOCD regulations.

If a DV tool is ran, the depth will be adjusted depending on current hole conditions. Cement volumes will be adjusted proportionally. The DV tool will be set a minimum of 50' below the previous casing shoe and a maximum of 200' above the current casing shoe. If cement is not circulated to surface on the 1st cement job, the 2nd stage will be pumped as planned. If cement does not return to surface on the 2nd stage the BLM will be notified immediately.



Drilling Operations Plan
WTG Fed Com 235H
Tap Rock Operating, LLC
SHL 265' FNL & 1895' FWL, Sec. 27
BHL 30' FSL & 1590' FWL, Sec. 34
T. 26S., R. 29E, Eddy County, NM

4. Casing & Cement

All Casing will be new.

Section	Hole Size	Casing Size	Standard	Tapered	Top MD	Bottom MD	Top TVD	BTM TVD	Grade	Weight	Thread	Collapse	Burst	Tension
Surface	17.5	13.375	API	No	0	755	0	755	J-55	54.5	BUTT	1.13	1.15	1.6
1st Intermediate	12.25	9.625	API	No	0	2989	0	2985	J-55	40	BUTT	1.13	1.15	1.6
2nd Intermediate	8.75	7.625	API	No	0	2689	0	2685	P-110	29.7	BUTT	1.13	1.15	1.6
2nd Intermediate	8.75	7.625	NON API	Yes	2689	10241	2685	10230	P-110	29.7	W441	1.13	1.15	1.6
Production	6.75	5.5	NON API	No	0	10041	0	10030	P-110	20	TXP	1.13	1.15	1.6
Production	6.75	5.5	NON API	No	10041	18110	10030	10854	P-110	20	W441	1.13	1.15	1.6

Section	Drilled Interval			Casing Size	Standard	Tapered	Casing Set Depths				Casing Details					
	Hole Size	Top	Btm				Top MD	Bottom MD	Top TVD	BTM TVD	Grade	Weight	Thread	Collapse	Burst	Tension
Surface	17.5	0	765	13.375	API	No	0	755	0	755	J-55	54.5	BUTT	1.13	1.15	1.6
Intermediate	9.875	765	4500	7.625	API	No	0	4200	0	4191	P-110	29.7	BUTT	1.13	1.15	1.6
	8.75	4500	10251	7.625	NON API	Yes	4200	10241	4191	10230	P-110	29.7	W441	1.13	1.15	1.6
Production	6.75	10251	18110	5.5	NON API	No	0	10041	0	10030	P-110	20	TXP	1.13	1.15	1.6
Production	6.75			5.5	NON API	No	10041	18110	10030	10854	P-110	20	W441	1.13	1.15	1.6

*OPTION TO RUN 3 STRING OR 4 STRING DESIGN

Name	Type	Top MD	Sacks	Yield	Cu. Ft	Weight	Excess	Cement	Additives
Surface	Lead	0	543	1.65	896	13.5	100%	C	5% NCI + LCM
	Tail	641	361	1.35	487	14.8	100%	C	5% NCI + LCM
1st Intermediate	Lead	0	567	2.18	1235	12.7	65%	C	Bentonite + 1% CaCL ₂ + 8% NaCl + LCM
	Tail	2391	232	1.33	309	14.8	65%	C	5% NaCl + LCM
2nd Intermediate	Lead	2689	310	2.87	889	11.5	35%	TXI	Fluid Loss + Dispersant + Retarder + LCM
	Tail	9241	87	1.56	136	13.2	35%	H	Fluid Loss + Dispersant + Retarder + LCM
Production	Tail	9741	511	1.71	874	14.2	25%	H	Fluid Loss + Dispersant + Retarder + LCM

Name		Type	Top MD	Sacks	Yield	Cu. Ft	Weight	Excess	Cement	Additives
Surface		Lead	0	543	1.65	896	13.5	100%	C	5% NCI + LCM
		Tail	641	361	1.35	487	14.8	100%	C	5% NCI + LCM
Intermediate	Stage 1	Lead	0	992	2.4	2381	11.5	65%	C	Fluid Loss + Dispersant + Retarder + LCM
		Tail	9241	106	1.56	166	13.2	65%	C	Fluid Loss + Dispersant + Retarder + LCM
	Stage 2	Primary	0	749	2.4	1799	11.5	65%	C	Bentonite + 1% CaCl2 + 8% NaCl + LCM
		DVT	5085							
Production		Primary	9741	511	1.71	874	14.2	25%	H	Fluid Loss + Dispersant + Retarder + LCM

*OPTION TO RUN DV TOOL IF NECESSARY

5. Mud Program

Name	Top	Bottom	Type	Mud Weight	Visc	Fluid Loss
Surface	0	755	FW Spud Mud	8.30	28	NC
Intermediate	755	2989	Brine Water	10.00	30-32	NC
Intermediate 2	2989	10241	FW/Cut Brine	9.00	30-32	NC
Production	10241	18110	Oil Base Mud	11.50	50-70	<10

Name	Top	Bottom	Type	Mud Weight	Visc	Fluid Loss
Surface	0	755	FW Gel	8.30	28	NC
Intermediate	755	10251	DBE/Cut Brine	9.00	30-32	NC
Production	10251	18110	Oil Base Mud	11.50	55-75	<10



Drilling Operations Plan
WTG Fed Com 235H
Tap Rock Operating, LLC
SHL 265' FNL & 1895' FWL, Sec. 27
BHL 30' FSL & 1590' FWL, Sec. 34
T. 26S., R. 29E, Eddy County, NM

Electronic Pason mud monitor system complying with Onshore Order 1 will be used. All necessary mud products (e. g., barite, cedar bark) for weight addition and fluid loss control will always be on site. Mud program is subject to change due to hole conditions. A closed loop system will be used.

6. Cores, Tests, & Logs

- Electric Logging Program: No open-hole logs are planned at this time for the pilot hole.
- GR will be collected while drilling through the MWD tools from 9.625" casing shoe to TD.
- A 2-person mud logging program will be used from 9.625" casing shoe to TD.
- No DSTs or cores are planned at this time.
- CBL w/ CCL from as far as gravity will let it fall to TOC.

7. Down Hole Conditions

No abnormal pressure or temperature is expected. Maximum expected bottom hole pressure is ≈6,491 psi. Expected bottom hole temperature is ≈170° F.

Tap Rock does not anticipate that there will be enough H₂S from the surface to the Wolfcamp formations to meet the BLM's Onshore Order 6 requirements for the submission of an "H₂S Drilling Operation Plan" or "Public Protection Plan" for drilling and completing this well. Tap Rock has an H₂S safety package on all wells and an "H₂S Drilling Operations Plan" is attached. Adequate flare lines will be installed off the mud/gas separator where gas may be safely flared. All personnel will be familiar with all aspects of safe operation of equipment being used.

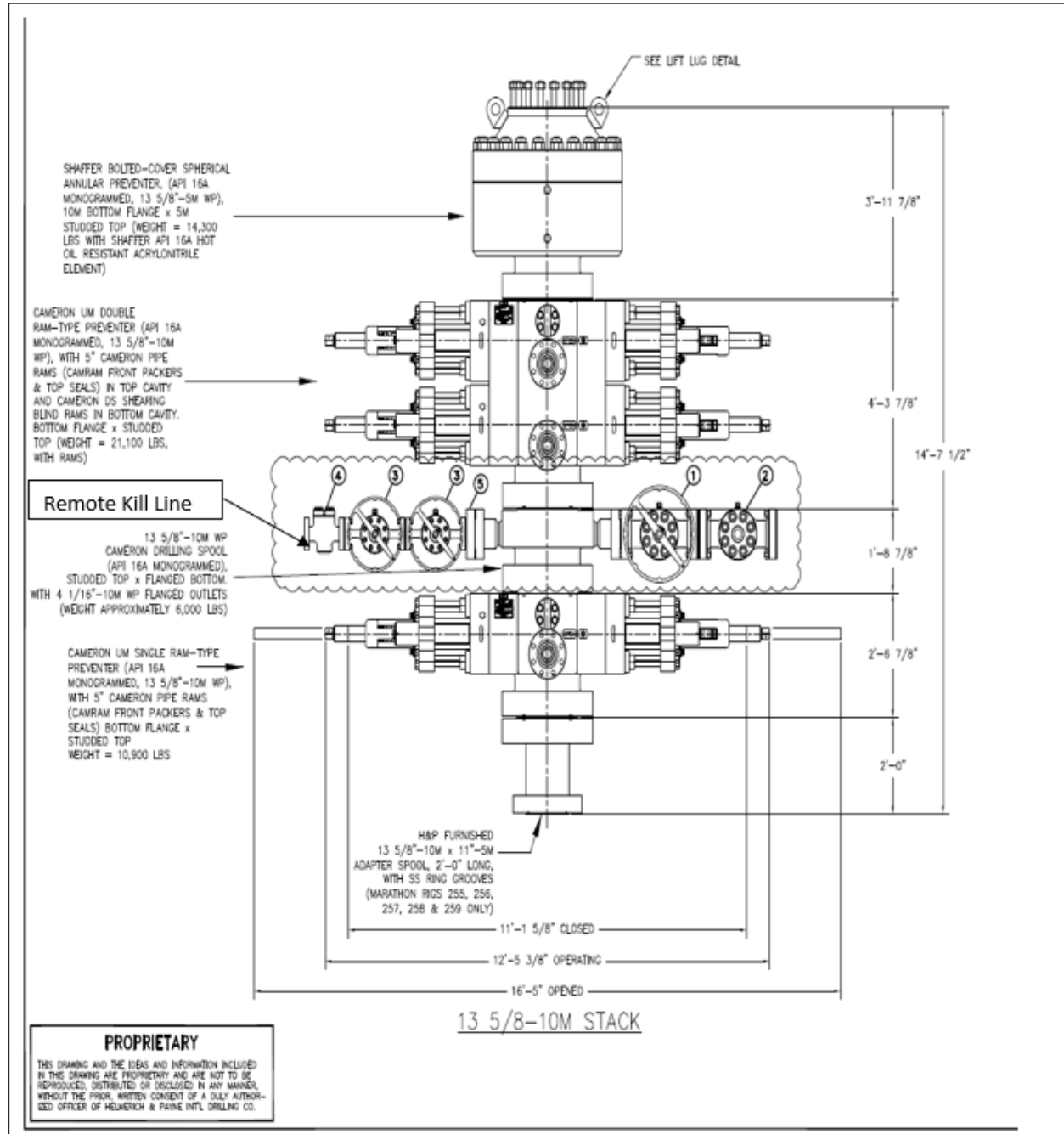
8. Other

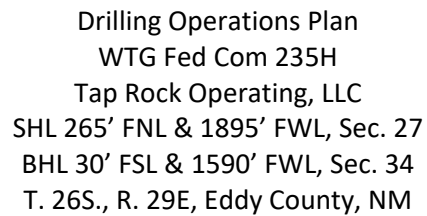
Road and location construction will begin after BLM approval of APD. Anticipated spud date as soon as approved. Drilling expected to take 30 days. If production casing is run an additional 60 days will be required to complete and construct surface facilities.



Drilling Operations Plan
WTG Fed Com 235H
Tap Rock Operating, LLC
SHL 265' FNL & 1895' FWL, Sec. 27
BHL 30' FSL & 1590' FWL, Sec. 34
T. 26S., R. 29E, Eddy County, NM

5,000 psi BOP Stack

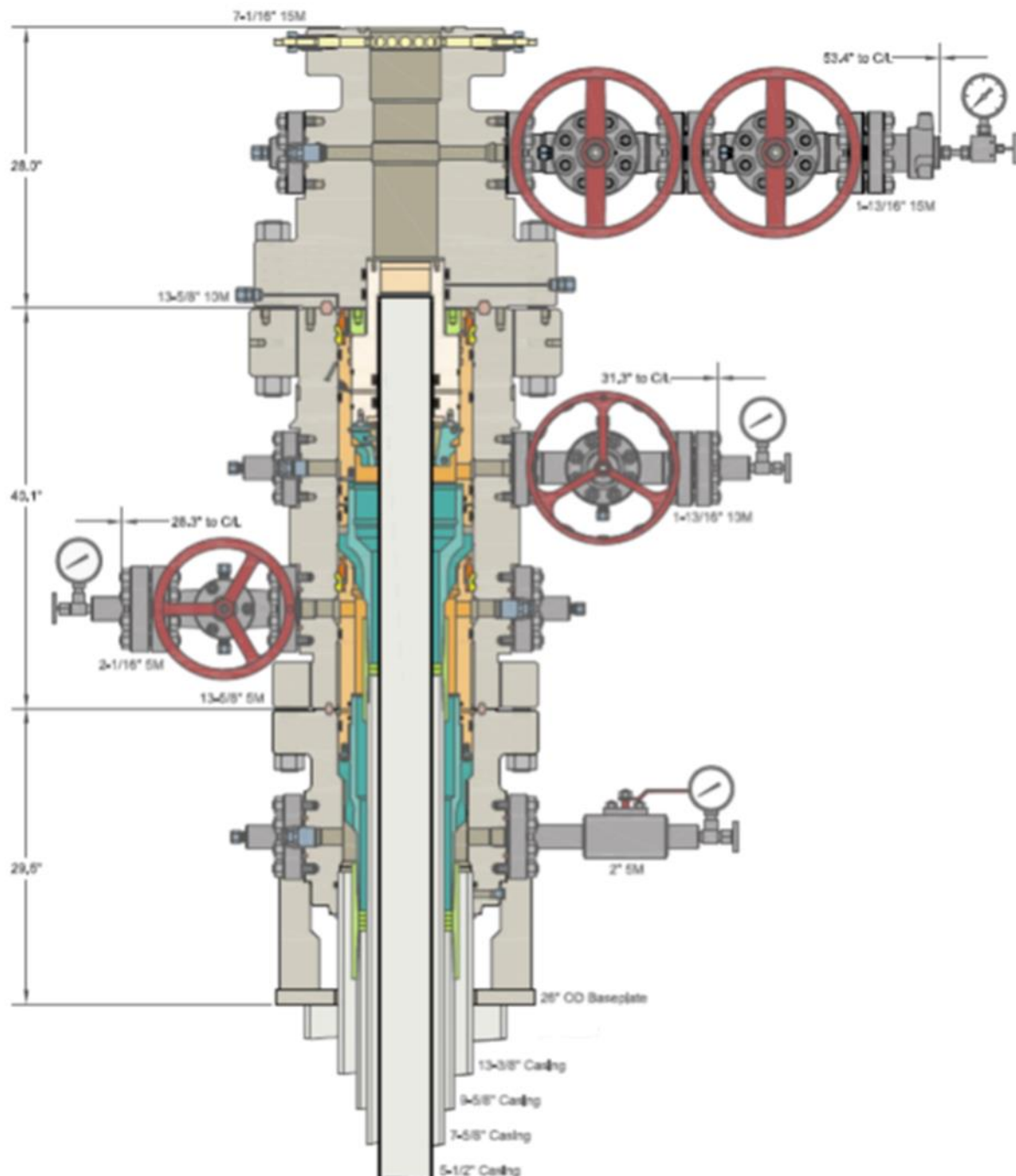






Drilling Operations Plan
WTG Fed Com 235H
Tap Rock Operating, LLC
SHL 265' FNL & 1895' FWL, Sec. 27
BHL 30' FSL & 1590' FWL, Sec. 34
T. 26S., R. 29E, Eddy County, NM

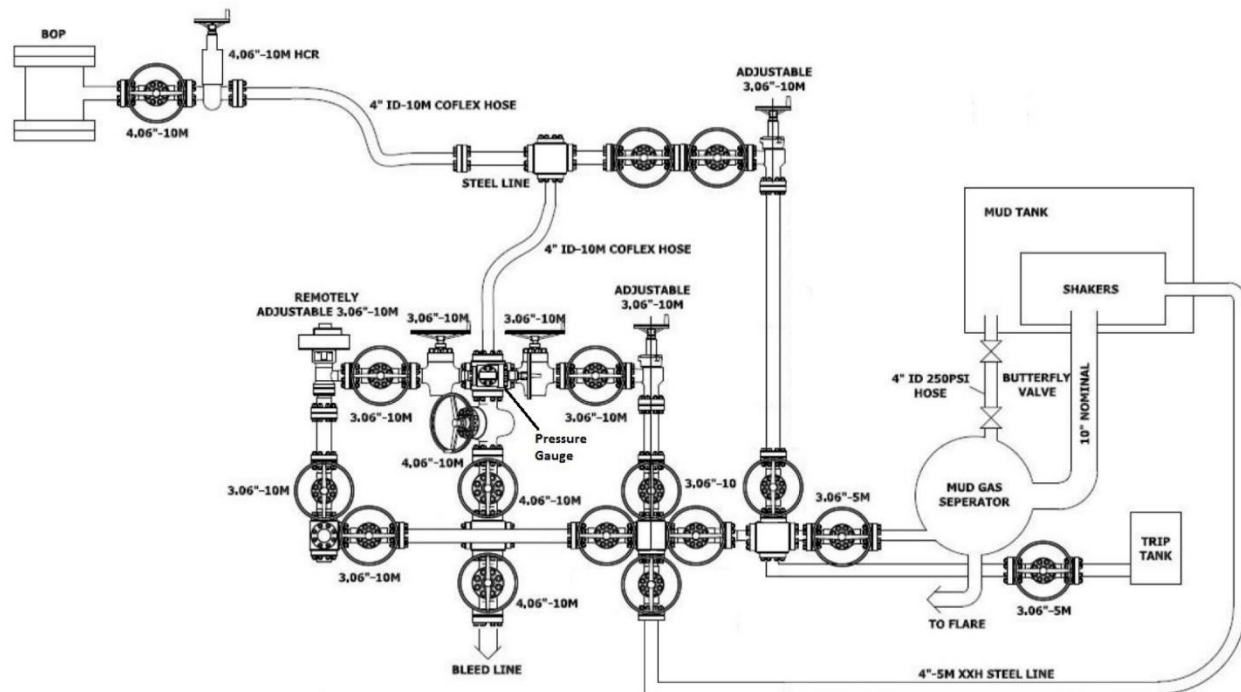
Multi-bowl Wellhead





Drilling Operations Plan
WTG Fed Com 235H
Tap Rock Operating, LLC
SHL 265' FNL & 1895' FWL, Sec. 27
BHL 30' FSL & 1590' FWL, Sec. 34
T. 26S., R. 29E, Eddy County, NM

10M Choke Layout





Wedge 441™



Coupling	Pipe Body
Grade: P110-IC	Grade: P110-IC
Body: White	1st Band: White
1st Band: -	2nd Band: Pale Green
2nd Band: -	3rd Band: -
3rd Band: -	4th Band: -
	5th Band: -
	6th Band: -

Outside Diameter	7.625 in.	Wall Thickness	0.375 in.	Grade	P110-IC
Min. Wall Thickness	90.00 %	Drift	API Standard	Type	Casing
Connection OD Option	REGULAR				

Pipe Body Data

Geometry				Performance	
Nominal OD	7.625 in.	Wall Thickness	0.375 in.	Body Yield Strength	940 x1000 lb
Nominal Weight	29.70 lb/ft	Plain End Weight	29.06 lb/ft	Min. Internal Yield Pressure	9740 psi
Drift	6.750 in.	OD Tolerance	API	SMYS	110,000 psi
Nominal ID	6.875 in.			Collapse Pressure	7360 psi

Connection Data

Geometry		Performance		Make-Up Torques	
Connection OD	7.900 in.	Tension Efficiency	75 %	Minimum	22,000 ft-lb
Coupling Length	8.666 in.	Joint Yield Strength	705 x1000 lb	Optimum	23,000 ft-lb
Connection ID	6.875 in.	Internal Pressure Capacity	9740 psi	Maximum	27,000 ft-lb
Make-up Loss	3.750 in.	Compression Efficiency	75 %	Operation Limit Torques	
Threads per inch	3.43	Compression Strength	705 x1000 lb	Operating Torque	37,000 ft-lb
Connection OD Option	Regular	Max. Allowable Bending	49 °/100 ft	Yield Torque	43,000 ft-lb
		External Pressure Capacity	7360 psi	Buck-On	
				Minimum	26,000 ft-lb
				Maximum	27,000 ft-lb

Notes

For the latest performance data, always visit our website: www.tenaris.com

Tenaris has issued this document for general information only, and the information in this document, including, without limitation, any pictures, drawings or designs ("Information") is not intended to constitute professional or any other type of advice or recommendation and is provided on an "as is" basis. No warranty is given. Tenaris has not independently verified any information –if any- provided by the user in connection with, or for the purpose of, the Information contained hereunder. The use of the Information is at user's own risk and Tenaris does not assume any responsibility or liability of any kind for any loss, damage or injury resulting from, or in connection with any Information contained hereunder or any use thereof. The Information in this document is subject to change or modification without notice. Tenaris's products and services are subject to Tenaris's standard terms and conditions or otherwise to the terms resulting from the respective contracts of sale or services, as the case may be, between petitioner and Tenaris. For more complete information please contact a Tenaris's representative or visit our website at www.tenaris.com . ©Tenaris 2021. All rights reserved.



Data Sheet

TH DS-19.0478 23 October 2019
Rev 01

5.500" 20.00 lb/ft P110-IC TenarisHydril Wedge 441™




PIPE BODY DATA					
GEOMETRY					
Nominal OD	5.500 in.	Nominal Weight	20.00 lbs/ft	Standard Drift Diameter	4.653 in.
Nominal ID	4.778 in.	Wall Thickness	0.361 in.	Special Drift Diameter	N/A
Plain End Weight	19.83 lbs/ft				
PERFORMANCE					
Body Yield Strength	641 x 1000 lbs	Internal Yield	12640 psi	Collapse	12100 psi


CONNECTION DATA					
GEOMETRY					
Connection OD	5.852 in.	Connection ID	4.778 in.	Make-up Loss	3.780 in.
Coupling Length	8.214 in.	Threads per in.	3.40		
PERFORMANCE					
Tension Efficiency	81.5%	Joint Yield Strength	522 x 1000 lbs	Internal Yield	12640 psi
Compression Efficiency	81.5%	Compression Strength	522 x 1000 lbs	Collapse	12100 psi
Bending	75 °/100 ft				
MAKE-UP TORQUES					
Minimum	14000 ft-lbs	Optimum	15000 ft-lbs	Maximum	18000 ft-lbs
BUCK-ON TORQUES					
Minimum	21600 ft-lbs			Maximum	23100 ft-lbs
OPERATIONAL LIMIT TORQUES					
Operating Torque	25000 ft-lbs			Yield Torque	29000 ft-lbs

*If you need to use torque values that are higher than the maximum indicated, please contact a local Tenaris technical sales representative

5.5", 20#, P-110, TXP connection (modified buttress connection that provides a torque rating of nearly 24000ft-lbs)



[SHARE](#) | [EXPORT DATA](#) | [PRINT](#)



Outside Diameter	5.500 in.	Min. Wall Thickness	87.5%	
		Drift	API Standard	
Wall Thickness	0.361 in.	Type	Casing	
Grade	P110	Connection OD Option	REGULAR	

Clear Filters

Compare

Request Info

CONNECTION INFORMATION
[> Blanking Dimensions](#)
[> Connection's Page](#)
[> Brochure](#)
[> Datasheet Manual](#)

PIPE BODY DATA

GEOMETRY					
Nominal OD	5.500 in.	Nominal Weight	20 lbs/ft	Drift	4.653 in.
Nominal ID	4.778 in.	Wall Thickness	0.361 in.	Plain End Weight	19.83 lbs/ft
OD Tolerance	API				
PERFORMANCE					
Body Yield Strength	641 x1000 lbs	Internal Yield	12640 psi	SMYS	110000 psi
Collapse	11100 psi				

CONNECTION DATA

GEOMETRY					
Connection OD	6.100 in.	Coupling Length	9.450 in.	Connection ID	4.766 in.
Make-up Loss	4.204 in.	Threads per in	5	Connection OD Option	REGULAR
PERFORMANCE					
Tension Efficiency	100.0 %	Joint Yield Strength	641.000 x1000 lbs	Internal Pressure Capacity ^[1]	12640.000 psi
Compression Efficiency	100 %	Compression Strength	641.000 x1000 lbs	Max. Allowable Bending	92 °/100 ft
External Pressure Capacity	11100.000 psi				
MAKE-UP TORQUES					
Minimum	11270 ft-lbs	Optimum	12520 ft-lbs	Maximum	13770 ft-lbs
OPERATION LIMIT TORQUES					
Operating Torque	21500 ft-lbs	Yield Torque	23900 ft-lbs		

District I
1625 N. French Dr., Hobbs, NM 88240
Phone:(575) 393-6161 Fax:(575) 393-0720
District II
811 S. First St., Artesia, NM 88210
Phone:(575) 748-1283 Fax:(575) 748-9720
District III
1000 Rio Brazos Rd., Aztec, NM 87410
Phone:(505) 334-6178 Fax:(505) 334-6170
District IV
1220 S. St Francis Dr., Santa Fe, NM 87505
Phone:(505) 476-3470 Fax:(505) 476-3462

State of New Mexico
Energy, Minerals and Natural Resources
Oil Conservation Division
1220 S. St Francis Dr.
Santa Fe, NM 87505

CONDITIONS

Action 38838

CONDITIONS

Operator: TAP ROCK OPERATING, LLC 523 Park Point Drive Golden, CO 80401	OGRID: 372043
	Action Number: 38838
	Action Type: [C-103] NOI Change of Plans (C-103A)

CONDITIONS

Created By	Condition	Condition Date
jagarcia	None	8/6/2021