

Well Name: RESOLUTE 12 FED COM	Well Location: T25S / R32E / SEC 12 / SESW / 32.138922 / -103.6299774	County or Parish/State: LEA / NM
Well Number: 724H	Type of Well: OIL WELL	Allottee or Tribe Name:
Lease Number: NMNM110835	Unit or CA Name:	Unit or CA Number:
US Well Number: 300254761600X1	Well Status: Approved Application for Permit to Drill	Operator: EOG RESOURCES INCORPORATED

Notice of Intent

Type of Submission: Notice of Intent	Type of Action Other
Date Sundry Submitted: 05/26/2021	Time Sundry Submitted: 11:35
Date proposed operation will begin: 06/09/2021	

Procedure Description: EOG respectfully requests an amendment to our approved APD for this well to reflect the following changes: Change SHL to T-25-S, R-32-E, Sec 12, 399' FSL, 2185' FWL, Lea Co., N.M. Change BHL to T-25-S, R-32-E, Sec 1, 100' FNL, 2275' FWL, Lea Co., N.M. Change target formation to Wolfcamp U2.

Surface Disturbance

Is any additional surface disturbance proposed?: No

NOI Attachments

Procedure Description

- Wellhead_9.675_x_7.625_x_5.5_in_csg_20210521064817.pdf
- See_previously_attached_Drill_Plan_20210521064817.pdf
- Resolute_12_Fed_Com_724H_Sundry_Info____Rev_BHL____tgt_5.12.2021_20210521064817.pdf
- EOG_BLM_10M_Annular_Variance____9.625_in_20210521064816.pdf
- Resolute_12_Fed_Com_724H_Wall_Plot_20210521064816.pdf
- Resolute_12_Fed_Com_724H_Planning_Report_20210521064816.pdf
- 10_M_Choke_Manifold_20210521064816.pdf
- Co_Flex_Hose_Test_Chart_20210521064816.pdf
- 5.500in_20.00_VST_P110EC_VAM_SFC_20210521064816.pdf
- 10_M_BOP_Diagram_9.625_in_20210521064816.pdf

County or Parish/State: LEA 7
NM

Allottee or Tribe Name:

Unit or CA Number:

Operator: EOG RESOURCES
INCORPORATED

RESOLUTE_12_FED_COM_724H_C102_20210521064804.pdf

I certify that the foregoing is true and correct. Title 18 U.S.C. Section 1001 and Title 43 U.S.C. Section 1212, make it a crime for any person knowingly and willfully to make to any department or agency of the United States any false, fictitious or fraudulent statements or representations as to any matter within its jurisdiction. Electronic submission of Sundry Notices through this system satisfies regulations requiring a submission of Form 3160-5 or a Sundry Notice.

Signed on: MAY 26, 2021 11:35 AM

Email address: STAR_HARRELL@EOGRESOURCES.COM

Email address: eric_brorman@eogresources.com

Signature: Chris Walls

District I
1625 N. French Dr., Hobbs, NM 88240
Phone: (575) 393-6161 Fax: (575) 393-0720
District II
811 S. First St., Artesia, NM 88210
Phone: (575) 748-1283 Fax: (575) 748-9720
District III
1000 Rio Brazos Road, Aztec, NM 87410
Phone: (505) 334-6178 Fax: (505) 334-6170
District IV
1220 S. St. Francis Dr., Santa Fe, NM 87505
Phone: (505) 476-3460 Fax: (505) 476-3462

State of New Mexico
Energy, Minerals & Natural Resources
Department
OIL CONSERVATION DIVISION
1220 South St. Francis Dr.
Santa Fe, NM 87505

FORM C-102

Revised August 1, 2011

Submit one copy to appropriate

District Office

☐ AMENDED REPORT

WELL LOCATION AND ACREAGE DEDICATION PLAT

¹ API Number 30-025-47614	² Pool Code 98180	³ Pool Name WC-025 G-09 S253309P; Upper Wolfcamp
⁴ Property Code 329310	⁵ Property Name RESOLUTE 12 FED COM	⁶ Well Number 724H
⁷ OGRID No. 7377	⁸ Operator Name EOG RESOURCES, INC.	⁹ Elevation 3500'

¹⁰Surface Location

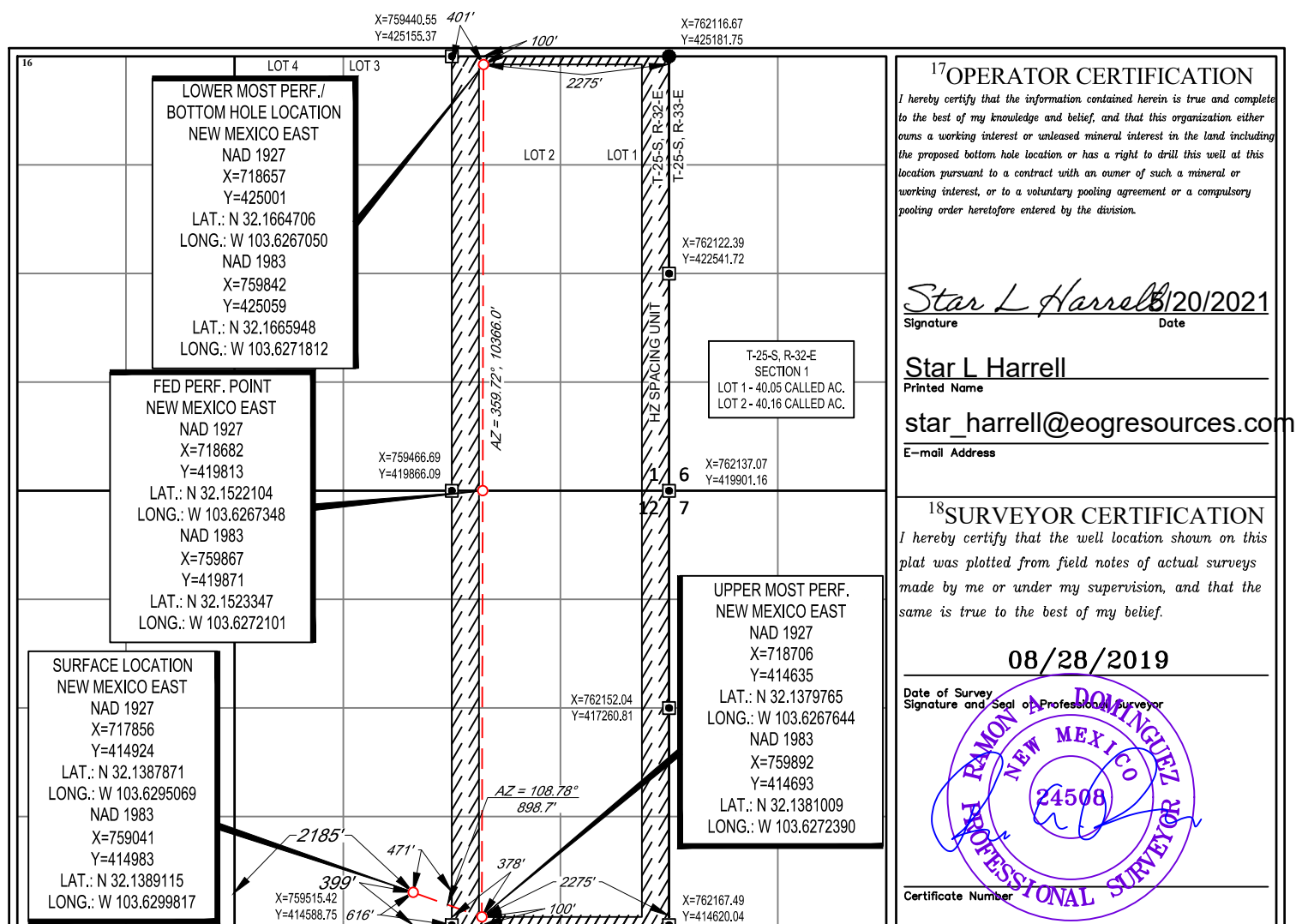
UL or lot no.	Section	Township	Range	Lot Idn	Feet from the	North/South line	Feet from the	East/West line	County
N	12	25-S	32-E	-	399'	SOUTH	2185'	WEST	LEA

¹¹Bottom Hole Location If Different From Surface

UL or lot no.	Section	Township	Range	Lot Idn	Feet from the	North/South line	Feet from the	East/West line	County
2	1	25-S	32-E	-	100'	NORTH	2275'	EAST	LEA

¹² Dedicated Acres 640.21	¹³ Joint or Infill	¹⁴ Consolidation Code	¹⁵ Order No.
--	-------------------------------	----------------------------------	-------------------------

No allowable will be assigned to this completion until all interests have been consolidated or a non-standard unit has been approved by the division.





Resolute 12 Fed Com 724H

Revised Permit Information 05/12/2021:

Well Name: Resolute 12 Fed Com 724H

Location: SHL: 399' FSL & 2185' FWL, Section 12, T-25-S, R-32-E, Lea Co., N.M.

BHL: 100' FNL & 2275' FWL, Section 1, T-25-S, R-32-E, Lea Co., N.M.

Casing Program:

Hole Size	Interval	Csg OD	Weight	Grade	Conn	DFmin Collapse	DFmin Burst	DFmin Tension
12.25"	0' - 1,100'	9.625"	36#	J-55	LTC	1.125	1.25	1.6
8.75"	0' - 11,220'	7.625"	29.7#	HCP-110	FXL	1.125	1.25	1.6
6.75"	0' - 10,720'	5.5"	20#	P-110EC	DWC/C-IS MS	1.125	1.25	1.6
6.75"	10,720' - 11,220'	5.5"	20#	P-110EC	VAM SFC	1.125	1.25	1.6
6.75"	11,220' - 22,845'	5.5"	20#	P-110EC	DWC/C-IS MS	1.125	1.25	1.6

Variance is requested to waive the centralizer requirements for the 7-5/8" casing in the 8-3/4" hole size. An expansion additive will be utilized, in the cement slurry, for the entire length of the 8-3/4" hole interval to maximize cement bond and zonal isolation.

Variance is also requested to waive any centralizer requirements for the 5-1/2" casing in the 6-3/4" hole size. An expansion additive will be utilized, in the cement slurry, for the entire length of the 6-3/4" hole interval to maximize cement bond and zonal isolation.

Variance is also requested to waive the annular clearance requirements for the 5-1/2" casing by 7-5/8" casing annulus to the proposed top of cement.

EOG requests permission to allow deviation from the 0.422" annulus clearance requirement from Onshore Order #2 under the following conditions:

- Annular clearance to meet or exceed 0.422" between intermediate casing ID and production casing coupling only on the first 500' overlap between both casing strings.
- Annular clearance less than 0.422" is acceptable for the production open hole section.

Cementing Program:

Depth	No. Sacks	Wt. ppg	Yld Ft3/sk	Slurry Description
1,100' 9-5/8"	310	13.5	1.73	Lead: Class C + 4.0% Bentonite Gel + 0.5% CaCl ₂ + 0.25 lb/sk Cello-Flake (TOC @ Surface)
	80	14.8	1.34	Tail: Class C + 0.6% FL-62 + 0.25 lb/sk Cello-Flake + 0.2% Sodium Metasilicate (TOC @ 900')
11,220' 7-5/8"	470	14.2	1.11	1st Stage (Tail): Class C + 0.6% Halad-9 + 0.45% HR-601 + 3% Microbond (TOC @ 7,220')
	1230	14.8	1.5	2nd Stage (Bradenhead squeeze): Class C + 3% Salt + 1% PreMag-M + 6% Bentonite Gel (TOC @ surface)
22,845' 5-1/2"	1030	14.2	1.31	Lead: Class H + 0.4% Halad-344 + 0.35% HR-601 + 3% Microbond (TOC @ 10,720')

**Resolute 12 Fed Com 724H**

Additive	Purpose
Bentonite Gel	Lightweight/Lost circulation prevention
Calcium Chloride	Accelerator
Cello-flake	Lost circulation prevention
Sodium Metasilicate	Accelerator
MagOx	Expansive agent
Pre-Mag-M	Expansive agent
Sodium Chloride	Accelerator
FL-62	Fluid loss control
Halad-344	Fluid loss control
Halad-9	Fluid loss control
HR-601	Retarder
Microbond	Expansive Agent

EOG requests variance from minimum standards to pump a two stage cement job on the 7-5/8" intermediate casing string with the first stage being pumped conventionally with the calculated top of cement at the Brushy Canyon (7,420') and the second stage performed as a bradenhead squeeze with planned cement from the Brushy Canyon to surface. If necessary, a top out consisting of 1,234 sacks of Class C cement + 3% Salt + 1% PreMag-M + 6% Bentonite Gel (2.30 yld, 12.91 ppg) will be executed as a contingency. Top will be verified by Echo-meter.

EOG will include the Echo-meter verified fluid top and the volume of displacement fluid above the cement slurry in the annulus in all post-drill sundries on wells utilizing this cement program.

EOG will report to the BLM the volume of fluid (limited to 5 bbls) used to flush intermediate casing valves following backside cementing procedures.

Mud Program:

Depth	Type	Weight (ppg)	Viscosity	Water Loss
0 – 1,100'	Fresh - Gel	8.6-8.8	28-34	N/c
1,100' – 11,220'	Brine	10.0-10.2	28-34	N/c
11,220' – 12,156'	Oil Base	8.7-9.4	58-68	N/c - 6
12,156' – 22,845'	Oil Base	10.0-14.0	58-68	4 - 6



Resolute 12 Fed Com 724H

399' FSL
2185' FWL
Section 12
T-25-S, R-32-E

Revised Wellbore

API: 30-025-47616

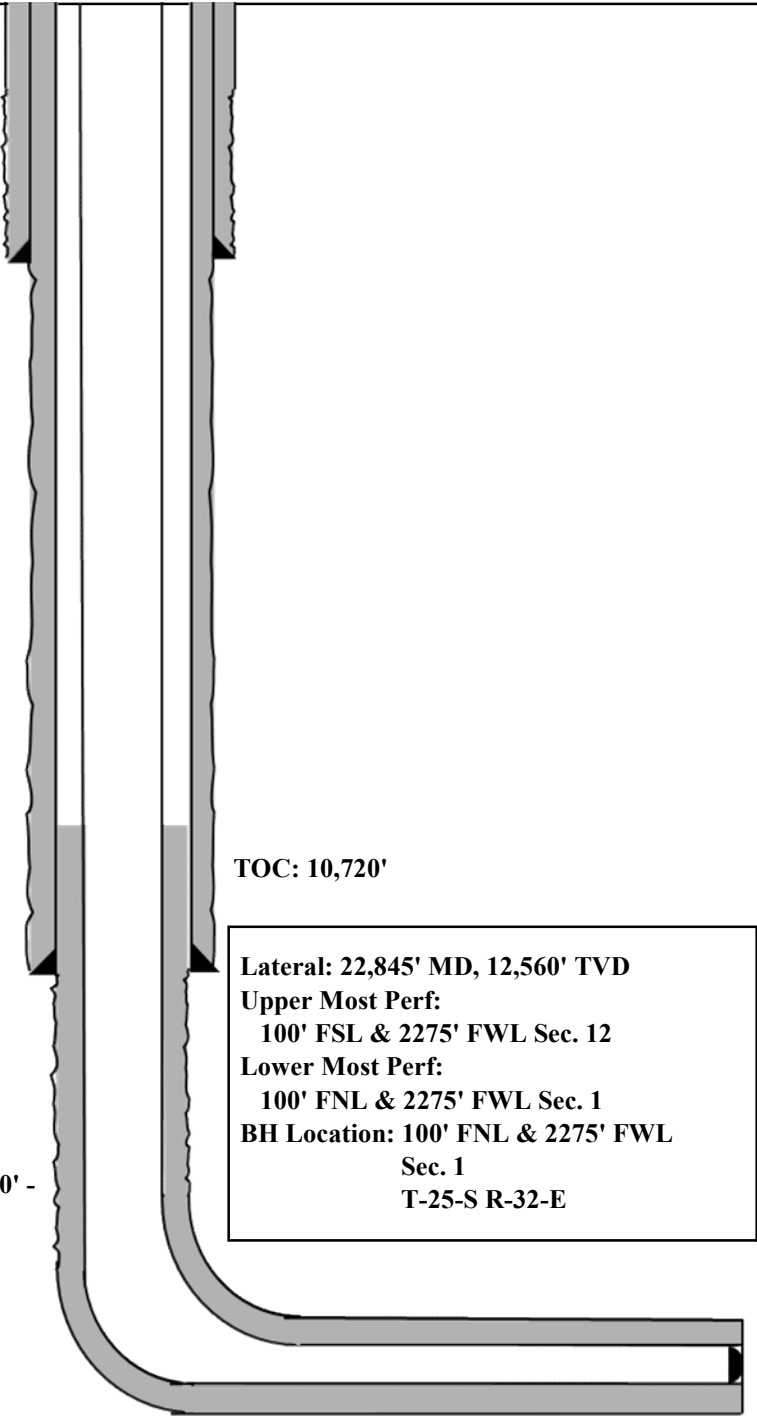
KB: 3525'
GL: 3500'

Bit Size: 12-1/4"
9-5/8", 36#, J-55, LTC, 0' - 1,100'

Bit Size: 8-3/4"
7-5/8", 29.7#, HCP-110, FXL, 0' - 11,220'

Bit Size: 6-3/4"
5-1/2", 20#, P-110EC, DWC/C-IS MS, @ 0' - 10,720'
5-1/2", 20#, P-110EC, VAM SFC, @ 10,720' - 11,220'
5-1/2", 20#, P-110EC, DWC/C-IS MS, @ 11,220' - 22,845'

KOP: 12,156'



TOC: 10,720'

Lateral: 22,845' MD, 12,560' TVD
Upper Most Perf:
100' FSL & 2275' FWL Sec. 12
Lower Most Perf:
100' FNL & 2275' FWL Sec. 1
BH Location: 100' FNL & 2275' FWL
Sec. 1
T-25-S R-32-E

District I

1625 N. French Dr., Hobbs, NM 88240
Phone:(575) 393-6161 Fax:(575) 393-0720

District II

811 S. First St., Artesia, NM 88210
Phone:(575) 748-1283 Fax:(575) 748-9720

District III

1000 Rio Brazos Rd., Aztec, NM 87410
Phone:(505) 334-6178 Fax:(505) 334-6170

District IV

1220 S. St Francis Dr., Santa Fe, NM 87505
Phone:(505) 476-3470 Fax:(505) 476-3462

State of New Mexico
Energy, Minerals and Natural Resources
Oil Conservation Division
1220 S. St Francis Dr.
Santa Fe, NM 87505

CONDITIONS

Action 32449

CONDITIONS

Operator: EOG RESOURCES INC P.O. Box 2267 Midland, TX 79702	OGRID: 7377
	Action Number: 32449
	Action Type: [C-103] NOI Change of Plans (C-103A)

CONDITIONS

Created By	Condition	Condition Date
pkautz	None	8/27/2021