

Well Name: DA ON PAH	Well Location: T27N / R12W / SEC 35 / SENE /	County or Parish/State: SAN JUAN / NM
Well Number: 1R	Type of Well: OTHER	Allottee or Tribe Name: EASTERN NAVAJO
Lease Number: N00C14207472	Unit or CA Name:	Unit or CA Number:
US Well Number: 3004530813	Well Status: Abandoned	Operator: MUSTANG RESOURCES LLC

Subsequent Report

Type of Submission: Subsequent Report

Type of Action: Plug and Abandonment

Date Sundry Submitted: 02/02/2021

Time Sundry Submitted: 09:11

Date Operation Actually Began: 10/04/2020

Actual Procedure: The Da On Pah #001R was plugged and abandoned on 10/7/2020. Please find attached a Plug and Abandonment End of Well Report and a Post-Abandonment Wellbore Diagram.

SR Attachments

Actual Procedure

Mustang\_Resources\_LLC\_Da\_On\_Pah\_1R\_PA\_EOW\_Report\_20210202090937.pdf

Da\_On\_Pah\_FINAL\_PA\_Wellbore\_Schematic\_20210202090906.pdf

<b>Well Name:</b> DA ON PAH	<b>Well Location:</b> T27N / R12W / SEC 35 / SENE /	<b>County or Parish/State:</b> SAN JUAN / NM
<b>Well Number:</b> 1R	<b>Type of Well:</b> OTHER	<b>Allottee or Tribe Name:</b> EASTERN NAVAJO
<b>Lease Number:</b> N00C14207472	<b>Unit or CA Name:</b>	<b>Unit or CA Number:</b>
<b>US Well Number:</b> 3004530813	<b>Well Status:</b> Abandoned	<b>Operator:</b> MUSTANG RESOURCES LLC

Operator Certification

I certify that the foregoing is true and correct. Title 18 U.S.C. Section 1001 and Title 43 U.S.C. Section 1212, make it a crime for any person knowingly and willfully to make to any department or agency of the United States any false, fictitious or fraudulent statements or representations as to any matter within its jurisdiction. Electronic submission of Sundry Notices through this system satisfies regulations requiring a submission of Form 3160-5 or a Sundry Notice.

<b>Operator Electronic Signature:</b> LEMON	<b>Signed on:</b> FEB 02, 2021 09:10 AM
<b>Name:</b> MUSTANG RESOURCES LLC	
<b>Title:</b> RegulatoryManager	
<b>Street Address:</b> 1660 Lincoln St., Ste 1450	
<b>City:</b> Denver	<b>State:</b> CO
<b>Phone:</b> (720) 550-7507	
<b>Email address:</b> dlemon@mustangresourcesllc.com	

Field Representative

<b>Representative Name:</b>		
<b>Street Address:</b>		
<b>City:</b>	<b>State:</b>	<b>Zip:</b>
<b>Phone:</b>		
<b>Email address:</b>		

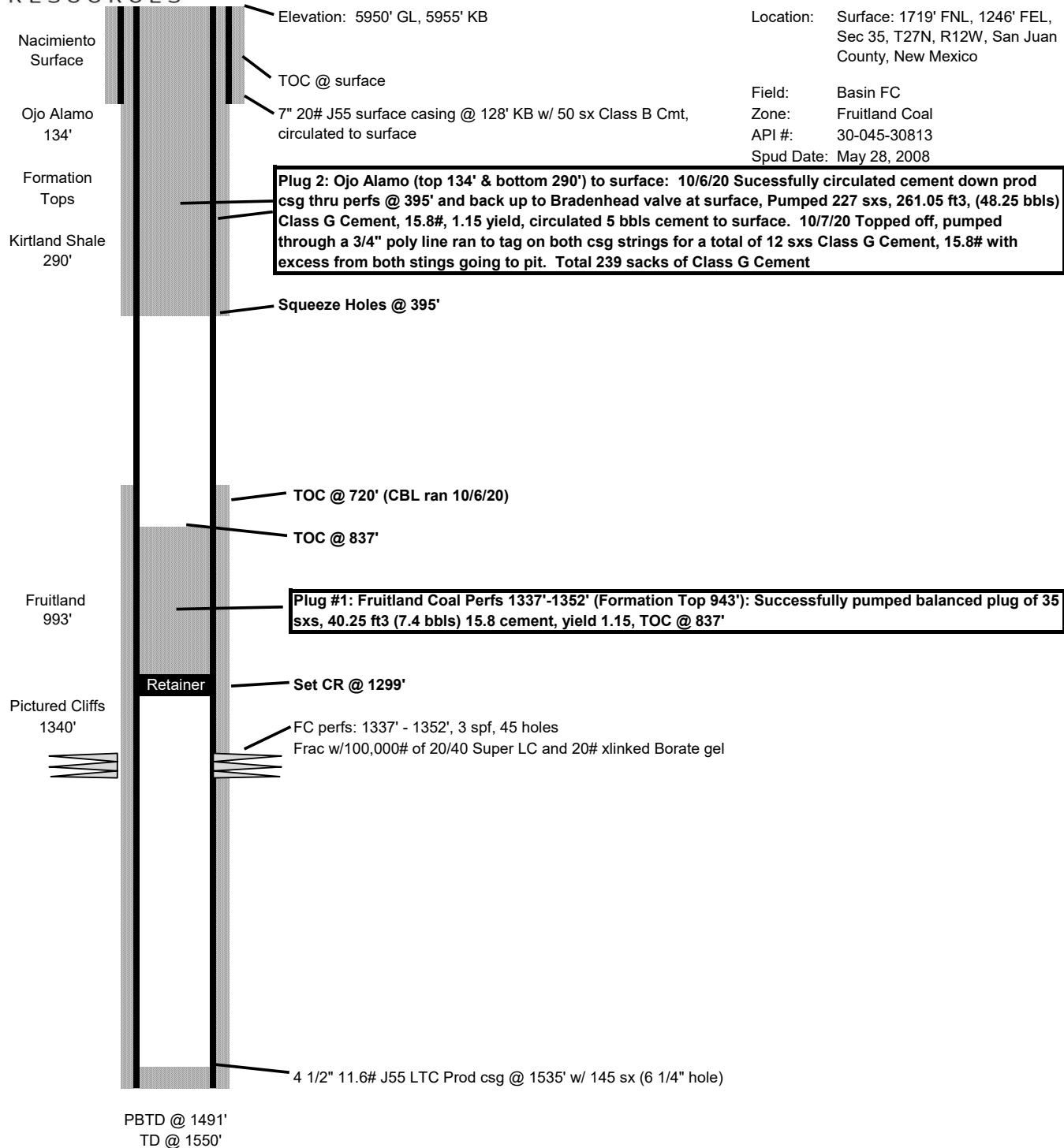
BLM Point of Contact

<b>BLM POC Name:</b> WILLIAM F TAMBEKOU	<b>BLM POC Title:</b> PETROLEUM ENGINEER
<b>BLM POC Phone:</b> 7192698500	<b>BLM POC Email Address:</b> wtambekou@blm.gov
<b>Disposition:</b> Accepted	<b>Disposition Date:</b> 04/01/2021
<b>Signature:</b> William Max Tambekou	



# Da On Pah 1R As P&A'd Schematic

Revised 10/9/20



## **Mustang Resources LLC**

### **Plug And Abandonment End Of Well Report**

#### **Da On Pah #001R**

1719' FNL & 1246' FEL, Section 35, T27N, R12W

San Juan County, NM / API 30-045-30813

#### **Work Summary:**

- 10/2/20** Made BLM, and NMOCD P&A operations notifications at 9:00 AM MST.
- 10/5/20** MOL and R/U P&A rig. Checked well pressures: Tubing: 0 psi, Casing: 0 psi, Bradenhead: 0 psi. Bled down well. N/D wellhead, N/U BOP and function tested. L/D production tubing and tubing pump. P/U casing scraper and work string and tallied in the wellbore to a depth of 1343'. TOOH with work string. P/U CR, TIH and set at 1299'. Pumped 10 bbls of fresh water below CR at 1299'. Stung out of CR and circulated the wellbore clean with 30 bbls of fresh water. Pressure tested tubing to 500 psi in which it successfully held pressure. TOOH with work string. Filled up wellbore with fresh water and shut-in well for the day.
- 10/6/20** Checked well pressures: Tubing: 0 psi, Casing: 0 psi, Bradenhead: 0 psi. Bled down well. Topped-off wellbore with fresh water. Pressure tested production casing to 600 psi in which it successfully held pressure. R/U wire line services. Ran CBL from CR at 1299' to surface. CBL results were sent to BLM/NMOCD offices for review. TIH with work string to CR at 1299'. Stung into CR and attempted to establish injection rate through CR at 1299' and into Fruitland perforations but was unsuccessful. Stung out of CR. R/U cementing services. Pumped plug #1 from 1299'-837' to cover the Fruitland perforations and formation top. (see plug summary below) L/D work string to surface. R/U wire line services. RIH and perforated squeeze holes at 395'. R/U cementing services. Successfully established circulation down production casing through perforations at 395' and

back around and out Bradenhead valve at surface. Successfully circulated cement down production casing through perforations at 395' and back around and out Bradenhead valve at surface to cover the Kirtland and Ojo Alamo formation tops and surface casing shoe. (see plug summary below) N/D BOP and R/D P&A rig. Wellhead cut-off will be performed 10/7/20. Mark Decker was BLM inspector on location.

**10/7/20** Checked well pressures: Tubing: N/A, Casing: 0 psi, Bradenhead: 0 psi. Dug out wellhead to install subsurface P&A marker. Performed wellhead cut-off. Ran weighted tally tape down both 4.5" production casing and 7" surface casing. Cement was tagged 30' down in 7" surface casing and 36.5' down in 4.5" production casing. Ran ¾" poly pipe down both surface and production casings and topped-off well with 12 sx of cement. Installed subsurface P&A marker below ground per BLM and NMOCD standards. Photographed the P&A marker in place and recorded its location via GPS coordinates. R/D and MOL.

#### **Plug Summary:**

##### **Plug #1: (Fruitland Perforations and Formation Top 1299'-837', 35 Sacks Class G Cement, 15.8#, 1.15 yield)**

Mixed 35 sx Class G cement and spotted a balanced plug to cover the Fruitland perforations and formation top.

##### **Plug #2: (Kirtland and Ojo Alamo Formation Tops and Surface Casing Shoe 395'-Surface, 239 Sacks(12 sacks for top-off) Class G Cement, 15.8#, 1.15 yield)**

RIH and perforated squeeze holes at 395'. R/U cementing services. Successfully established circulation down production casing through perforations at 395' and back around and out Bradenhead valve at surface. Successfully circulated cement down production casing through perforations at 395' and back around and out Bradenhead valve at surface to cover the Kirtland and Ojo Alamo formation tops and surface casing shoe. N/D BOP and R/D P&A rig. Wellhead cut-off will be performed 10/7/20. Dug out wellhead to install subsurface P&A marker. Performed wellhead cut-off. Ran weighted tally tape down both 4.5" production casing and 7" surface casing. Cement was tagged 30' down in 7" surface casing and 36.5' down in 4.5" production casing. Ran ¾" poly pipe down both surface and production casings and topped-off well with 12 sx of cement. Installed subsurface P&A marker below ground per BLM and NMOCD standards. Photographed the P&A marker in place and recorded its location via GPS coordinates. R/D and MOL.

## **Mustang Resources LLC**

### **Plug And Abandonment End Of Well Report**

#### **Da On Pah #001R**

1719' FNL & 1246' FEL, Section 35, T27N, R12W

San Juan County, NM / API 30-045-30813

#### **Work Summary:**

- 10/2/20** Made BLM, and NMOCD P&A operations notifications at 9:00 AM MST.
- 10/5/20** MOL and R/U P&A rig. Checked well pressures: Tubing: 0 psi, Casing: 0 psi, Bradenhead: 0 psi. Bled down well. N/D wellhead, N/U BOP and function tested. L/D production tubing and tubing pump. P/U casing scraper and work string and tallied in the wellbore to a depth of 1343'. TOOH with work string. P/U CR, TIH and set at 1299'. Pumped 10 bbls of fresh water below CR at 1299'. Stung out of CR and circulated the wellbore clean with 30 bbls of fresh water. Pressure tested tubing to 500 psi in which it successfully held pressure. TOOH with work string. Filled up wellbore with fresh water and shut-in well for the day.
- 10/6/20** Checked well pressures: Tubing: 0 psi, Casing: 0 psi, Bradenhead: 0 psi. Bled down well. Topped-off wellbore with fresh water. Pressure tested production casing to 600 psi in which it successfully held pressure. R/U wire line services. Ran CBL from CR at 1299' to surface. CBL results were sent to BLM/NMOCD offices for review. TIH with work string to CR at 1299'. Stung into CR and attempted to establish injection rate through CR at 1299' and into Fruitland perforations but was unsuccessful. Stung out of CR. R/U cementing services. Pumped plug #1 from 1299'-837' to cover the Fruitland perforations and formation top. (see plug summary below) L/D work string to surface. R/U wire line services. RIH and perforated squeeze holes at 395'. R/U cementing services. Successfully established circulation down production casing through perforations at 395' and

back around and out Bradenhead valve at surface. Successfully circulated cement down production casing through perforations at 395' and back around and out Bradenhead valve at surface to cover the Kirtland and Ojo Alamo formation tops and surface casing shoe. (see plug summary below) N/D BOP and R/D P&A rig. Wellhead cut-off will be performed 10/7/20. Mark Decker was BLM inspector on location.

**10/7/20** Checked well pressures: Tubing: N/A, Casing: 0 psi, Bradenhead: 0 psi. Dug out wellhead to install subsurface P&A marker. Performed wellhead cut-off. Ran weighted tally tape down both 4.5" production casing and 7" surface casing. Cement was tagged 30' down in 7" surface casing and 36.5' down in 4.5" production casing. Ran ¾" poly pipe down both surface and production casings and topped-off well with 12 sx of cement. Installed subsurface P&A marker below ground per BLM and NMOCD standards. Photographed the P&A marker in place and recorded its location via GPS coordinates. R/D and MOL.

#### **Plug Summary:**

##### **Plug #1: (Fruitland Perforations and Formation Top 1299'-837', 35 Sacks Class G Cement, 15.8#, 1.15 yield)**

Mixed 35 sx Class G cement and spotted a balanced plug to cover the Fruitland perforations and formation top.

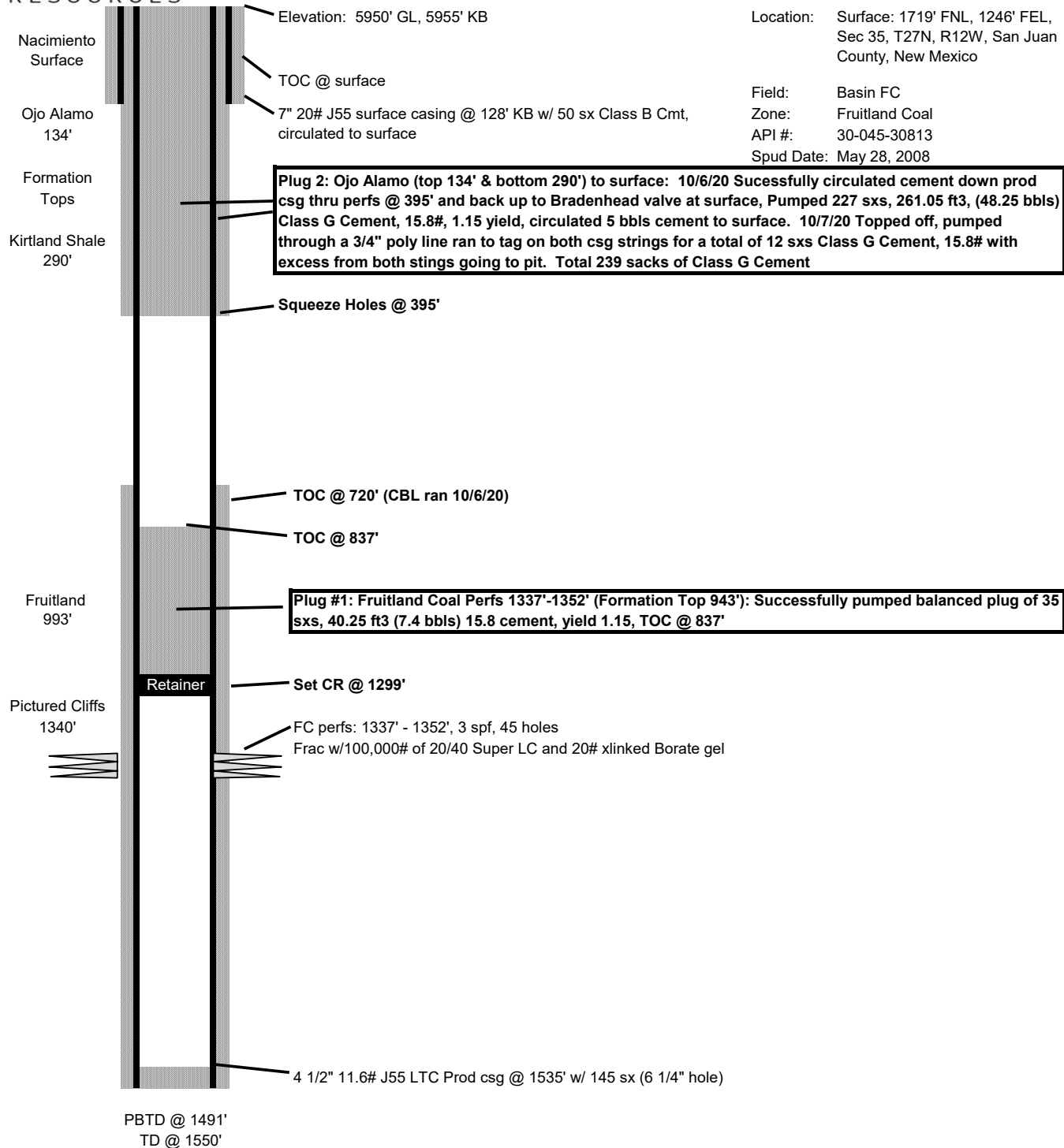
##### **Plug #2: (Kirtland and Ojo Alamo Formation Tops and Surface Casing Shoe 395'-Surface, 239 Sacks(12 sacks for top-off) Class G Cement, 15.8#, 1.15 yield)**

RIH and perforated squeeze holes at 395'. R/U cementing services. Successfully established circulation down production casing through perforations at 395' and back around and out Bradenhead valve at surface. Successfully circulated cement down production casing through perforations at 395' and back around and out Bradenhead valve at surface to cover the Kirtland and Ojo Alamo formation tops and surface casing shoe. N/D BOP and R/D P&A rig. Wellhead cut-off will be performed 10/7/20. Dug out wellhead to install subsurface P&A marker. Performed wellhead cut-off. Ran weighted tally tape down both 4.5" production casing and 7" surface casing. Cement was tagged 30' down in 7" surface casing and 36.5' down in 4.5" production casing. Ran ¾" poly pipe down both surface and production casings and topped-off well with 12 sx of cement. Installed subsurface P&A marker below ground per BLM and NMOCD standards. Photographed the P&A marker in place and recorded its location via GPS coordinates. R/D and MOL.



# Da On Pah 1R As P&A'd Schematic

Revised 10/9/20





**District I**  
1625 N. French Dr., Hobbs, NM 88240  
Phone:(575) 393-6161 Fax:(575) 393-0720  
**District II**  
811 S. First St., Artesia, NM 88210  
Phone:(575) 748-1283 Fax:(575) 748-9720  
**District III**  
1000 Rio Brazos Rd., Aztec, NM 87410  
Phone:(505) 334-6178 Fax:(505) 334-6170  
**District IV**  
1220 S. St Francis Dr., Santa Fe, NM 87505  
Phone:(505) 476-3470 Fax:(505) 476-3462

**State of New Mexico**  
**Energy, Minerals and Natural Resources**  
**Oil Conservation Division**  
**1220 S. St Francis Dr.**  
**Santa Fe, NM 87505**

CONDITIONS  
  
Action 45069

CONDITIONS

Operator: Mustang Resources LLC 1660 Lincoln Street Denver, CO 80264	OGRID: 373495
	Action Number: 45069
	Action Type: [C-103] Sub. Plugging (C-103P)

CONDITIONS

Created By	Condition	Condition Date
ksimmons	Comply with all state and federal regulations for abandonment and reclamation of well.	8/30/2021