

<b>Well Name:</b> RED HILLS WEST 22 W1CN FED COM	<b>Well Location:</b> T26S / R32E / SEC 22 / NENW /	<b>County or Parish/State:</b>
<b>Well Number:</b> 3H	<b>Type of Well:</b> CONVENTIONAL GAS WELL	<b>Allottee or Tribe Name:</b>
<b>Lease Number:</b> NMNM105562	<b>Unit or CA Name:</b>	<b>Unit or CA Number:</b>
<b>US Well Number:</b> 3002549247	<b>Well Status:</b> Approved Application for Permit to Drill	<b>Operator:</b> MEWBOURNE OIL COMPANY

Notice of Intent

**Sundry ID:** 2633754

<b>Type of Submission:</b> Notice of Intent	<b>Type of Action:</b> Other
<b>Date Sundry Submitted:</b> 09/13/2021	<b>Time Sundry Submitted:</b> 11:36
<b>Date proposed operation will begin:</b> 09/13/2021	

**Procedure Description:** MOC would like to change the SL to 150' FNL & 2180' FWL, Sec 22 T26S R32E. See attached for new plats. This location was previously approved with the Red Hills West 22 W0BO Fed Com #4H.

Surface Disturbance

**Is any additional surface disturbance proposed?:** No

NOI Attachments

Procedure Description

Red\_Hills\_West\_22\_W1CN\_Fed\_Com\_3H\_20210913113837.pdf

<b>Well Name:</b> RED HILLS WEST 22 W1CN FED COM	<b>Well Location:</b> T26S / R32E / SEC 22 / NENW /	<b>County or Parish/State:</b>
<b>Well Number:</b> 3H	<b>Type of Well:</b> CONVENTIONAL GAS WELL	<b>Allottee or Tribe Name:</b>
<b>Lease Number:</b> NMNM105562	<b>Unit or CA Name:</b>	<b>Unit or CA Number:</b>
<b>US Well Number:</b> 3002549247	<b>Well Status:</b> Approved Application for Permit to Drill	<b>Operator:</b> MEWBOURNE OIL COMPANY

Operator Certification

I certify that the foregoing is true and correct. Title 18 U.S.C. Section 1001 and Title 43 U.S.C. Section 1212, make it a crime for any person knowingly and willfully to make to any department or agency of the United States any false, fictitious or fraudulent statements or representations as to any matter within its jurisdiction. Electronic submission of Sundry Notices through this system satisfies regulations requiring a submission of Form 3160-5 or a Sundry Notice.

<b>Operator Electronic Signature:</b> BRADLEY BISHOP	<b>Signed on:</b> SEP 13, 2021 11:38 AM
<b>Name:</b> MEWBOURNE OIL COMPANY	
<b>Title:</b> Regulatory	
<b>Street Address:</b> PO Box 5270	
<b>City:</b> Hobbs	<b>State:</b> NM
<b>Phone:</b> (575) 393-5905	
<b>Email address:</b> bbishop@mewbourne.com	

Field Representative

<b>Representative Name:</b>		
<b>Street Address:</b>		
<b>City:</b>	<b>State:</b>	<b>Zip:</b>
<b>Phone:</b>		
<b>Email address:</b>		

BLM Point of Contact

<b>BLM POC Name:</b> Cody Layton	<b>BLM POC Title:</b> Assistant Field Manager Lands & Minerals
<b>BLM POC Phone:</b> 5752345959	<b>BLM POC Email Address:</b> clayton@blm.gov
<b>Disposition:</b> Approved	<b>Disposition Date:</b> 09/27/2021
<b>Signature:</b> Cody R. Layton	

District I  
1625 N. French Dr., Hobbs, NM 88240  
Phone: (575) 393-6161 Fax: (575) 393-0720  
District II  
811 S. First St., Artesia, NM 88210  
Phone: (575) 748-1283 Fax: (575) 748-9720  
District III  
1000 Rio Brazos Road, Aztec, NM 87410  
Phone: (505) 334-6178 Fax: (505) 334-6170  
District IV  
1220 S. St. Francis Dr., Santa Fe, NM 87505  
Phone: (505) 476-3460 Fax: (505) 476-3462

State of New Mexico  
Energy, Minerals & Natural Resources Department  
OIL CONSERVATION DIVISION  
1220 South St. Francis Dr.  
Santa Fe, NM 87505

Form C-102  
Revised August 1, 2011  
Submit one copy to appropriate  
District Office

☐ AMENDED REPORT

WELL LOCATION AND ACREAGE DEDICATION PLAT

1 API Number <b>30-025-49247</b>		2 Pool Code		3 Pool Name <b>PURPLE SAGE WOLFCAMP</b>	
4 Property Code		5 Property Name <b>RED HILLS WEST 22 W1CN FED COM</b>			6 Well Number <b>3H</b>
7 OGRID NO. <b>14744</b>		8 Operator Name <b>MEWBOURNE OIL COMPANY</b>			9 Elevation <b>3150'</b>

10 Surface Location

UL or lot no. <b>C</b>	Section <b>22</b>	Township <b>26S</b>	Range <b>32E</b>	Lot Idn	Feet from the <b>150</b>	North/South line <b>NORTH</b>	Feet From the <b>2180</b>	East/West line <b>WEST</b>	County <b>LEA</b>
---------------------------	----------------------	------------------------	---------------------	---------	-----------------------------	----------------------------------	------------------------------	-------------------------------	----------------------

11 Bottom Hole Location If Different From Surface

UL or lot no. <b>N</b>	Section <b>22</b>	Township <b>26S</b>	Range <b>32E</b>	Lot Idn	Feet from the <b>100</b>	North/South line <b>SOUTH</b>	Feet from the <b>2140</b>	East/West line <b>WEST</b>	County <b>LEA</b>
---------------------------	----------------------	------------------------	---------------------	---------	-----------------------------	----------------------------------	------------------------------	-------------------------------	----------------------

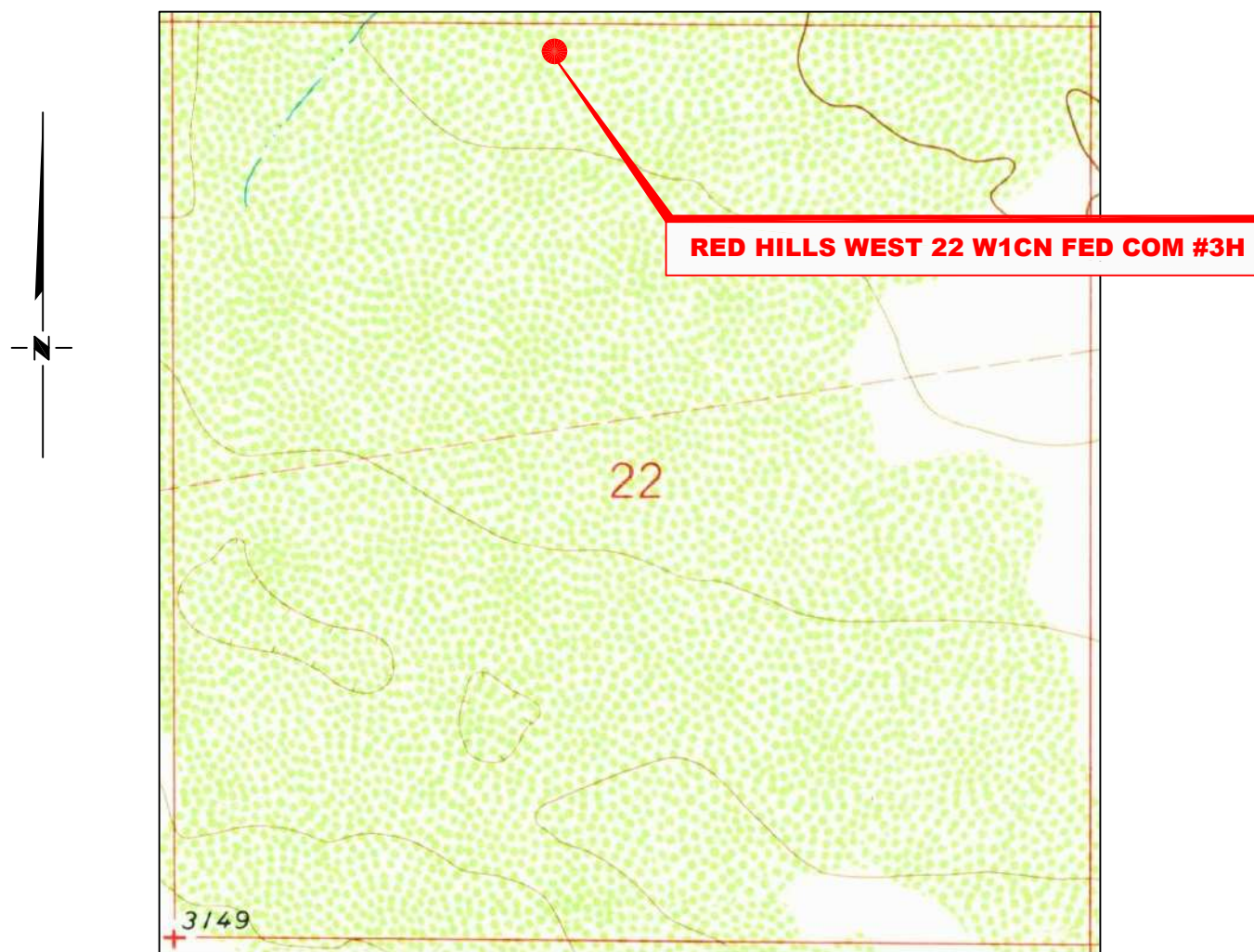
12 Dedicated Acres	13 Joint or Infill	14 Consolidation Code	15 Order No.
--------------------	--------------------	-----------------------	--------------

No allowable will be assigned to this completion until all interest have been consolidated or a non-standard unit has been approved by the division.

<p>(B) S 89°26'50" W 2666.78' (C) S 89°33'05" W 2662.72' (D)</p> <p>16</p> <p>2180'</p> <p>S.L.</p> <p>150'</p> <p>GEODETIC DATA NAD 83 GRID - NM EAST</p> <p>SURFACE LOCATION N 377178.0 - E 748634.2</p> <p>LAT: 32.0351777° N LONG: 103.6643596° W</p> <p>BOTTOM HOLE N 372074.4 - E 748634.8</p> <p>LAT: 32.0211487° N LONG: 103.6644599° W</p> <p>CORNER DATA NAD 83 GRID - NM EAST</p> <p>22</p> <p>A: FOUND BRASS CAP "1939" N 371957.0 - E 746496.0</p> <p>B: FOUND BRASS CAP "1939" N 377307.0 - E 746453.5</p> <p>C: FOUND BRASS CAP "1939" N 377332.7 - E 749119.7</p> <p>D: FOUND BRASS CAP "1939" N 377353.6 - E 751781.8</p> <p>E: FOUND BRASS CAP "1939" N 374677.5 - E 751799.1</p> <p>F: FOUND BRASS CAP "1939" N 372002.6 - E 751817.9</p> <p>G: FOUND BRASS CAP "1939" N 371978.6 - E 749158.2</p> <p>2140'</p> <p>B.H.</p> <p>100'</p> <p>(A) S 89°32'02" W 2662.72' (G) S 89°29'05" W 2660.31' (F)</p>		<p>17 OPERATOR CERTIFICATION</p> <p>I hereby certify that the information contained herein is true and complete to the best of my knowledge and belief, and that this organization either owns a working interest or unleased mineral interest in the land including the proposed bottom hole location or has a right to drill this well at this location pursuant to a contract with an owner of such a mineral or working interest, or to a voluntary pooling agreement or a compulsory pooling order heretofore entered by the division.</p> <p><i>Bradley Bishop</i> 9-13-21 Signature Date</p> <p><b>BRADLEY BISHOP</b> Printed Name</p> <p><b>BBISHOP@MEWBOURNE.COM</b> E-mail Address</p> <p>18 SURVEYOR CERTIFICATION</p> <p>I hereby certify that the well location shown on this plat was plotted from field notes of actual surveys made by me or under my supervision, and that the same is true and correct to the best of my belief.</p> <p><b>9-15-2020</b> Date of Survey</p> <p>Signature and Seal of Professional Surveyor</p> <p><b>19680</b> Certificate Number</p> <p>NEW MEXICO 19680 PROFESSIONAL SURVEYOR</p>
---	--	---

Job No.: LS20090456

# LOCATION VERIFICATION MAP



*SECTION 22 TWP. 26 SOUTH, RGE. 32 EAST,  
N. M. P. M., LEA CO., NEW MEXICO*

OPERATOR: Mewbourne Oil Company  
LEASE: Red Hills West 22 W1CN Fed Com  
WELL NO.: 3H  
ELEVATION: 3150'

LOCATION: 150' FNL & 2180' FWL  
CONTOUR INTERVAL: 10'  
USGS TOPO. SOURCE MAP:  
Paduca Breaks West, NM (1973)

*Copyright 2016 - All Rights Reserved*

NO.	REVISION	DATE
JOB NO.: LS20090456		
DWG. NO.: 20090456LVM		



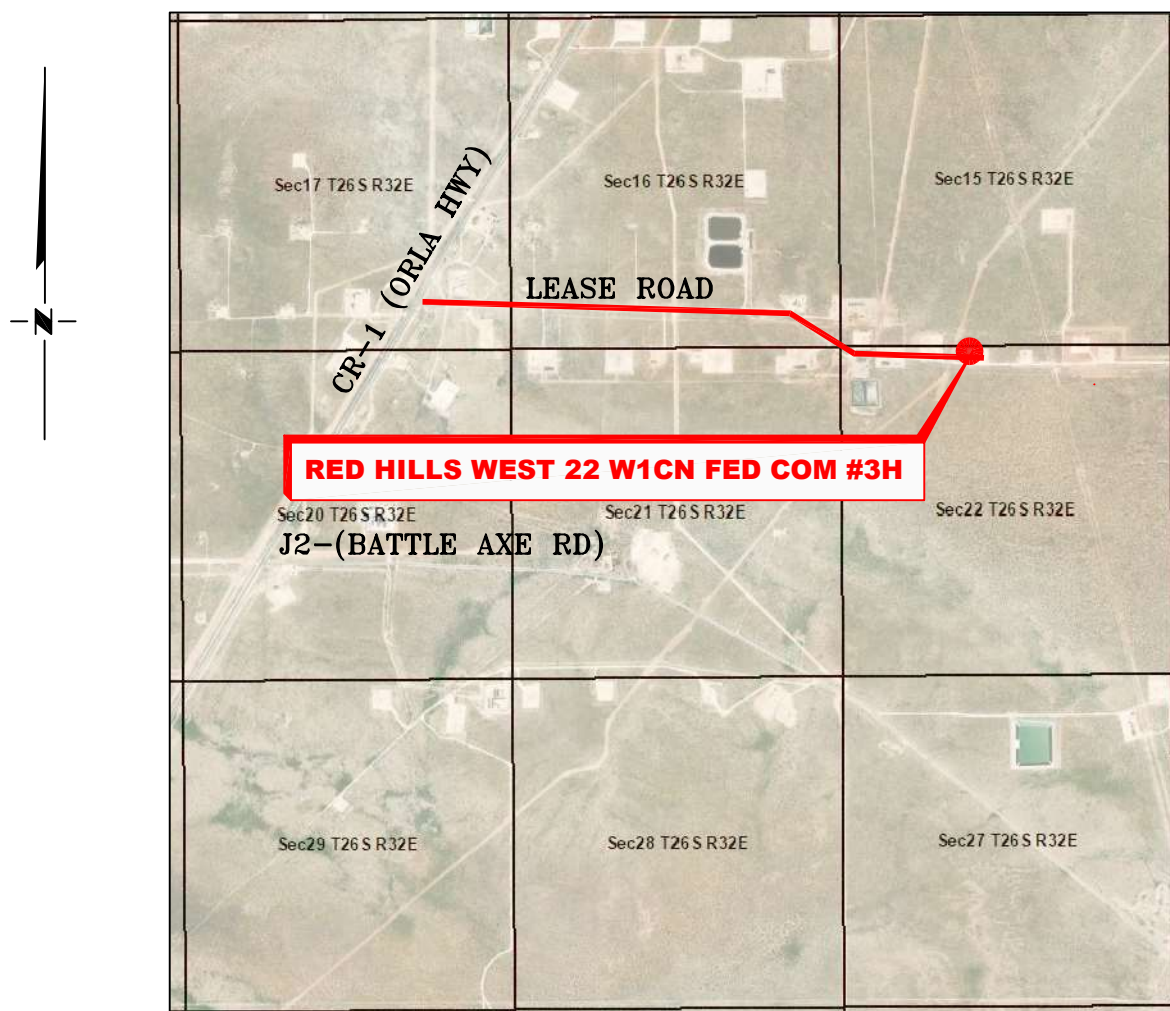
701 S. CECIL ST., HOBBS, NM 88240 (575) 964-8200

SCALE: N. T. S.
DATE: 9-15-2020
SURVEYED BY: ML/JC
DRAWN BY: LPS
APPROVED BY: RMH
SHEET: 1 OF 1



## VICINITY MAP

NOT TO SCALE



*SECTION 22, TWP. 26 SOUTH, RGE. 32 EAST,  
N. M. P. M., LEA COUNTY, NEW MEXICO*

OPERATOR: Mewbourne Oil CompanyLOCATION: 150' FNL & 2180' FWLLEASE: Red Hills West 22 W1CN Fed ComELEVATION: 3150'WELL NO.: 3H

Copyright 2016 – All Rights Reserved

RRC



701 S. CECIL ST., HOBBS, NM 88240 (575) 964-8200

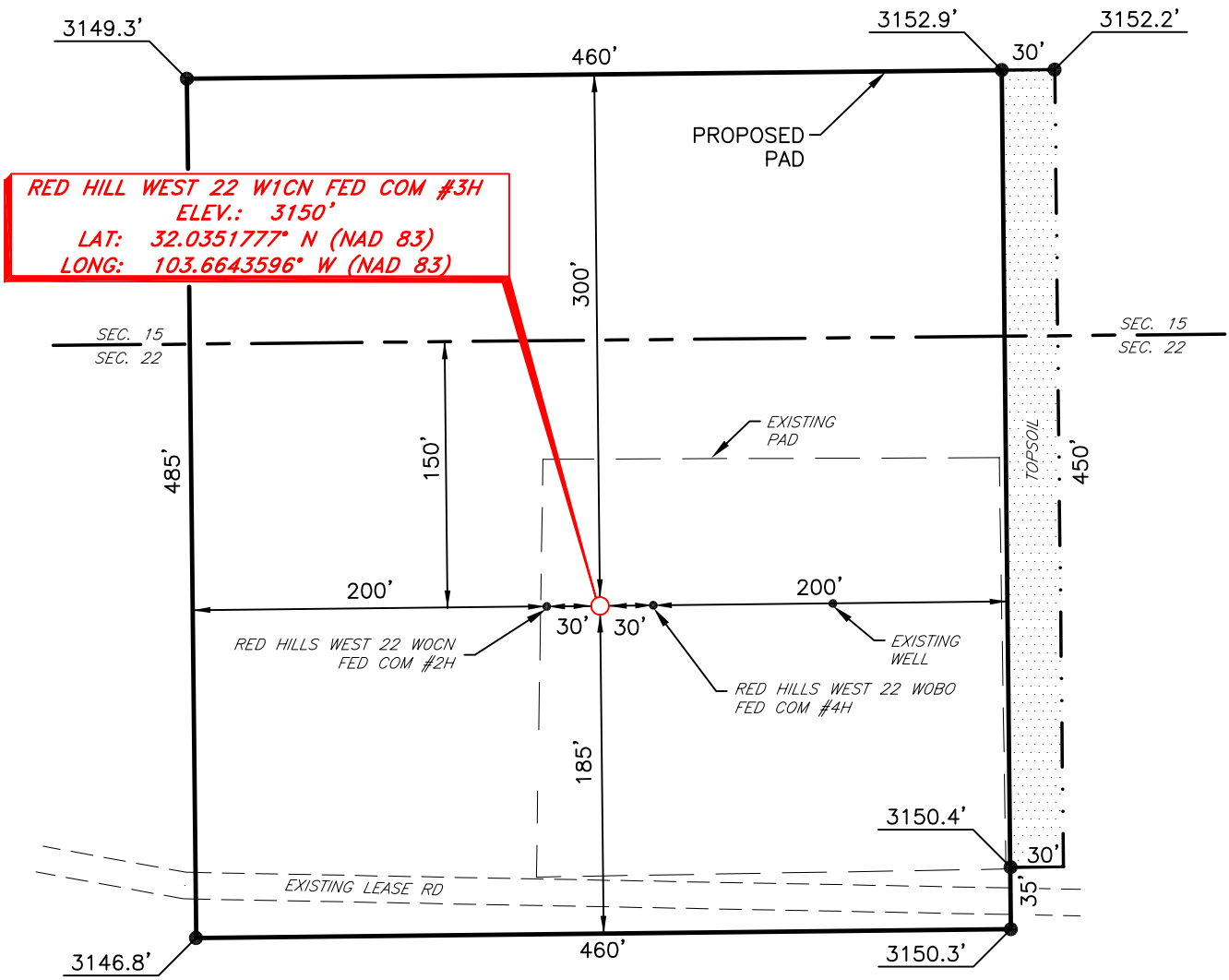
SCALE: N. T. S.
DATE: 9-15-2020
SURVEYED BY: ML/JC
DRAWN BY: LPS
APPROVED BY: RMH
SHEET: 1 OF 1

NO.	REVISION	DATE

JOB NO.: LS20090456

DWG. NO.: 20090456VM

MEWBOURNE OIL COMPANY  
RED HILLS WEST 22 W1CN FED COM #3H  
(150' FNL & 2180' FWL)  
SECTION 22, T26S, R32E  
N. M. P. M., LEA COUNTY, NEW MEXICO



DIRECTIONS TO LOCATION

From the intersection of CR-#1 (Orla Hwy.) and CR-#2 (Battleaxe Rd.);  
Go Northeast on CR-#1 approx. 1.0 miles to a lease road on the right;  
Turn right and go East approx. 1.8 miles to location on the left.

THIS IS NOT A BOUNDARY SURVEY, APPARENT PROPERTY CORNERS AND PROPERTY LINES ARE SHOWN FOR INFORMATION ONLY. BOUNDARY DATA IS SHOWN FROM A PREVIOUS SURVEY REFERENCED HEREON.

I, R. M. Howett, a N. M. Professional Surveyor, hereby certify that I prepared this unclassified survey of a well location from an actual survey made on the ground under my direct supervision, said survey and plat meet the Min. Stds. for Land Surveying in the State of N. M. and are true and correct to the best of my knowledge and belief.

*Robert M. Howett*  
Robert M. Howett NM PS 19680



Copyright 2016 - All Rights Reserved

SCALE: 1" = 100'  
0 50 100  
BEARINGS ARE  
NAD 83 GRID - NM EAST  
DISTANCES ARE GROUND

NO.	REVISION	DATE
JOB NO.: LS20090456		
DWG. NO.: 20090456-4		



701 S. CECIL ST., HOBBS, NM 88240 (575) 964-8200

SCALE: 1" = 100'
DATE: 09-15-2020
SURVEYED BY: ML/JC
DRAWN BY: LPS
APPROVED BY: RMH
SHEET: 1 OF 1

**District I**  
1625 N. French Dr., Hobbs, NM 88240  
Phone:(575) 393-6161 Fax:(575) 393-0720  
**District II**  
811 S. First St., Artesia, NM 88210  
Phone:(575) 748-1283 Fax:(575) 748-9720  
**District III**  
1000 Rio Brazos Rd., Aztec, NM 87410  
Phone:(505) 334-6178 Fax:(505) 334-6170  
**District IV**  
1220 S. St Francis Dr., Santa Fe, NM 87505  
Phone:(505) 476-3470 Fax:(505) 476-3462

**State of New Mexico**  
**Energy, Minerals and Natural Resources**  
**Oil Conservation Division**  
**1220 S. St Francis Dr.**  
**Santa Fe, NM 87505**

CONDITIONS  
  
Action 52236

CONDITIONS

Operator: MEWBOURNE OIL CO P.O. Box 5270 Hobbs, NM 88241	OGRID: 14744
	Action Number: 52236
	Action Type: [C-103] NOI Change of Plans (C-103A)

CONDITIONS

Created By	Condition	Condition Date
pkautz	None	9/28/2021