

Well Name: GAVILON FED COM	Well Location: T20S / R33E / SEC 33 / SWSW / 32.522694 / -103.67458	County or Parish/State: LEA / NM
Well Number: 602H	Type of Well: OIL WELL	Allottee or Tribe Name:
Lease Number: NMNM057683, NMNM57683	Unit or CA Name:	Unit or CA Number:
US Well Number: 3002546586	Well Status: Approved Application for Permit to Drill	Operator: ASCENT ENERGY LLC

Notice of Intent

Sundry ID: 2634069

Type of Submission: Notice of Intent	Type of Action: Other
Date Sundry Submitted: 09/14/2021	Time Sundry Submitted: 10:44
Date proposed operation will begin: 09/25/2021	

**Procedure Description:** Ascent Energy respectfully requests approval on the Gavilon Fed Com 602H for an option to:

- Addition of an External Casing Packer on the 9-5/8" Casing
- Increase the casing size of our vertical casing strings
- Circulating Medium change to Oil-Based Mud in the Production Hole Section.
- Revise proposed BOP beneath the base of the 20" surface shoe to setting the 1st Intermediate casing string only (13 3/8").

The reason for the request is based on improved drilling efficiencies and improved cementing in-place for each casing string. We believe the larger casing diameters in the vertical section will increase the likelihood of getting cement to surface for each string. There will be no change in Geology formations, and casing depths as noted in the COA of the approved APD. Please see attached document for further details

Surface Disturbance

Is any additional surface disturbance proposed?: No

NOI Attachments

Procedure Description

Gavilon\_602H\_Sundry\_27SEPT2021\_COA\_Surface\_Casing\_\_20210927085743.pdf

<b>Well Name:</b> GAVILON FED COM	<b>Well Location:</b> T20S / R33E / SEC 33 / SWSW / 32.522694 / -103.67458	<b>County or Parish/State:</b> LEA / NM
<b>Well Number:</b> 602H	<b>Type of Well:</b> OIL WELL	<b>Allottee or Tribe Name:</b>
<b>Lease Number:</b> NMNM057683, NMNM57683	<b>Unit or CA Name:</b>	<b>Unit or CA Number:</b>
<b>US Well Number:</b> 3002546586	<b>Well Status:</b> Approved Application for Permit to Drill	<b>Operator:</b> ASCENT ENERGY LLC

Conditions of Approval

Additional Reviews

33\_20S\_33E\_M\_ATS\_18\_2002\_Gavilon\_Fed\_Com\_602\_SUNDRY\_Lea\_NMNM057683\_Ascent\_Energy\_LLC\_13\_22b\_09\_29\_2021\_Yolanda\_Jimenez\_20210929132741.pdf

Gavilon\_Fed\_Com\_602H\_SUNDRY\_COA\_20210929132717.pdf

Operator Certification

*I certify that the foregoing is true and correct. Title 18 U.S.C. Section 1001 and Title 43 U.S.C. Section 1212, make it a crime for any person knowingly and willfully to make to any department or agency of the United States any false, fictitious or fraudulent statements or representations as to any matter within its jurisdiction. Electronic submission of Sundry Notices through this system satisfies regulations requiring a submission of Form 3160-5 or a Sundry Notice.*

<b>Operator Electronic Signature:</b> BEN METZ	<b>Signed on:</b> SEP 27, 2021 08:57 AM
<b>Name:</b> ASCENT ENERGY LLC	
<b>Title:</b> Vice President Exploration	
<b>Street Address:</b> PO BOX 270983	
<b>City:</b> LITTLETON	<b>State:</b> CO
<b>Phone:</b> (303) 513-8590	
<b>Email address:</b> BMETZ@ASCENTENERGY.US	

Field Representative

<b>Representative Name:</b>		
<b>Street Address:</b>		
<b>City:</b>	<b>State:</b>	<b>Zip:</b>
<b>Phone:</b>		
<b>Email address:</b>		

BLM Point of Contact

<b>BLM POC Name:</b> CHRISTOPHER WALLS	<b>BLM POC Title:</b> Petroleum Engineer
<b>BLM POC Phone:</b> 5752342234	<b>BLM POC Email Address:</b> cwalls@blm.gov
<b>Disposition:</b> Approved	<b>Disposition Date:</b> 09/29/2021
<b>Signature:</b> Chris Walls	

Ascent Energy respectfully requests approval on the Gavilon Fed Com 602H for an option to:

- Addition of an External Casing Packer on the 9-5/8" Casing
- Increase the casing size of our vertical casing strings
- Circulating Medium change to Oil-Based Mud in the Production Hole Section.
- Revise proposed BOP beneath the base of the 20" surface shoe to setting the 1<sup>st</sup> Intermediate casing string only (13 3/8").

The reason for the request is based on improved drilling efficiencies and improved cementing in-place for each casing string. We believe the larger casing diameters in the vertical section will increase the likelihood of getting cement to surface for each string.

There will be no change in Geology formations, and casing depths as noted in the COA of the approved APD.

#### External Casing Packer:

The pending hole conditions the addition of an External Casing Packer to the Intermediate #2 9-5/8" casing string is requested. A DV Tool is already approved, and the cement volumes will not change with the addition of an External Casing Packer.

#### New/Optional proposed design:

Casing:

DESCRIPTION	Hole Size (in)	CSG Size (in)	INTERVAL (ft)			WEIGHT (ppf)	GRADE	COUPLING	FORMATION PRESS @ CSG DEPTH (PPG)	MW @ CSG DEPTH (PPG)	SAFETY FACTORS		
			TOP MD	BTM TVD	BTM MD						BURST (psi)	COLLAPSE (psi)	TENSION (1000 lbs)
CONDUCTOR	36	30	0	120	120	---	---	WELD	---	---	---	---	---
SURFACE	26	20	0	1,520	1,520	94	J-55	BTC	8.3	9.0	2,110	520	1480
											3.0	2.8	10.4
INT. #1	17.5	13.375	0	3,283	3,300	54.5	J-55	BTC	8.3	10.0	2,730	1,130	853
											1.8	1.7	4.7
INT. #2	12.25	9.625	0	4,792	4,850	40	L-80	BTC	8.3	9.2	5,750	3,090	630
											1.5	4.4	3.2
PRODUCTION	8.75	5.5	0	11,311	21,666	20	P-110	BTC	8.7	9.6	12,630	11,100	641
											3.3	2.6	1.5

## Cement:

DESCRIPTION	HOLE (IN)	CSG (IN)	TOP	BTM	LENGTH (FT)	SLURRY DESCRIPTION	FT <sup>3</sup>	EXCESS	WEIGHT (ppg)	YIELD (FT <sup>3</sup> /SK)
							SACKS			
CONDUCTOR	36	30	0	120	120	Class G	518 443	100%	15.8	1.17
SURFACE - LEAD	26	20	0	1,020	1,020	Class C	2962 1722	100%	13.5	1.72
SURFACE - TAIL	26	20	1,020	1,520	500	Class C	1506 1132	100%	14.8	1.33
INT #1 - LEAD	17.5	13.375	0	2,800	2,800	Class C	3106 1339	75%	12.7	2.32
INT #1 - TAIL	17.5	13.375	2,800	3,300	500	Class C	608 457	75%	14.8	1.33
INT #2 - LEAD	12.25	9.625	0	4,350	4,350	50/50Poz Class C	1855 843	100%	11.5	2.2
INT #2 - TAIL	12.25	9.625	4,350	4,850	500	Class C	313 236	100%	14.8	1.33
INT #2 - DV LEAD	12.25	9.625	0	2,850	2,850	50/50Poz Class C	986 448	50%	11.5	2.2
INT #2 - DV TAIL	12.25	9.625	2,850	3,350	500	Class C	235 177	50%	14.8	1.33
PRODUCTION - LEAD	8.75	5.5	0	9,000	9,000	Nine Lite	2523 1017	20%	11.0	2.48
PRODUCTION - TAIL	8.75	5.5	9,000	21,666	12,666	35/65 Poz Class H	3840 2612	20%	13.2	1.47

Note: Int 2 is two stage cement job. DVT and External Casing packer to be placed @ approximately 3350' MD, 50ft from previous casing shoe and will be adjusted real time

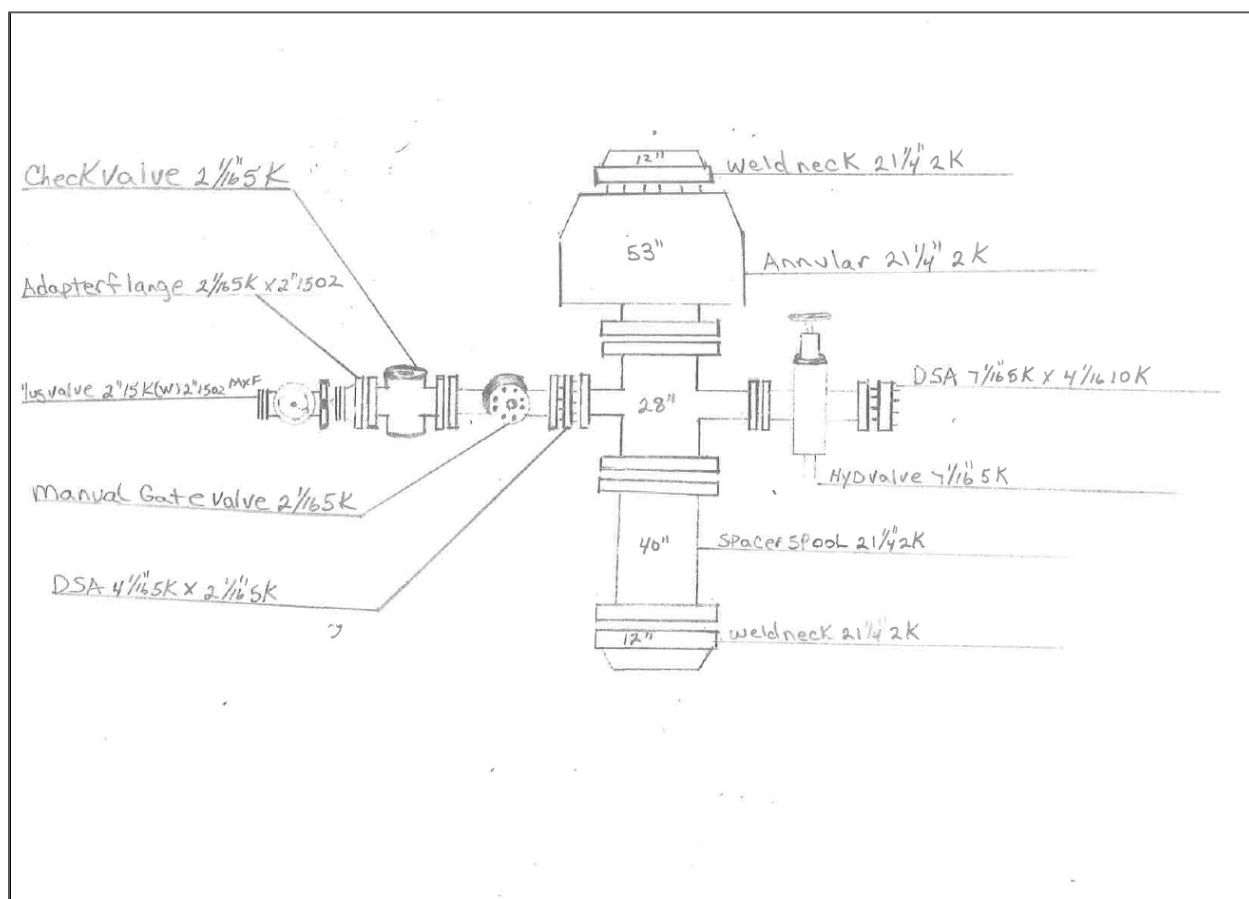
## Circulating Medium / Mud Program:

Top Depth	Bottom Depth	Mud Type	Min Weight (lbs/gal)	Max Weight (lbs/gal)
0	1520	OTHER: Fresh	8.4	9.6
1520	3300	OTHER: Brine Water	10	10
3300	4850	Fresh Water	8.4	9.6
4850	21666	Oil-Based Mud	8.5	9.5

**New Proposed BOP:**

From the Base of the 20" Surface pipe, the well will be equipped with a 2M Annular system. Before drilling out the 20" surface pipe, the 2M system will be tested to 250psi low and 1000psi high by an 3<sup>rd</sup> party service company. The 2M BOPE and related equipment will meet or exceed the requirements of a 2M psi system as set forth in On Shore Order No. 2 while drilling below the 20" surface shoe and to TD of Intermediate #1 (13-3/8" Casing). Once the Intermediate #1 13-3/8" Casing is cemented the 20" 2M BOPE and 21-1/4" wellhead will be removed and a 13-5/8" Multi-bowl wellhead and previously permitted 13-5/8" 5M BOPE will be installed. From the base of the Intermediate #1 13-3/8" casing string through running of the 5-1/2" production string the 5M BOPE will be equipped.

The previously permitted 5M choke will be utilized in conjunction with the 2M Annular System.

**ASCENT ENERGY****2M ANNULAR BOPE & DIAGRAM**

**District I**  
1625 N. French Dr., Hobbs, NM 88240  
Phone:(575) 393-6161 Fax:(575) 393-0720  
**District II**  
811 S. First St., Artesia, NM 88210  
Phone:(575) 748-1283 Fax:(575) 748-9720  
**District III**  
1000 Rio Brazos Rd., Aztec, NM 87410  
Phone:(505) 334-6178 Fax:(505) 334-6170  
**District IV**  
1220 S. St Francis Dr., Santa Fe, NM 87505  
Phone:(505) 476-3470 Fax:(505) 476-3462

**State of New Mexico**  
**Energy, Minerals and Natural Resources**  
**Oil Conservation Division**  
**1220 S. St Francis Dr.**  
**Santa Fe, NM 87505**

CONDITIONS  
  
Action 55411

CONDITIONS

Operator: ASCENT ENERGY, LLC. 1125 17th St Denver, CO 80202	OGRID: 325830
	Action Number: 55411
	Action Type: [C-103] NOI Change of Plans (C-103A)

CONDITIONS

Created By	Condition	Condition Date
pkautz	None	10/12/2021