

District I  
1625 N. French Dr., Hobbs, NM 88240  
District II  
811 S. First St., Artesia, NM 88210  
District III  
1000 Rio Brazos Rd., Aztec, NM 87410  
District IV  
1220 S. St. Francis Dr., Santa Fe, NM 87505

Oil Conservation Division  
1220 South St. Francis Dr.  
Santa Fe, NM 87505

Submit one copy to appropriate District Office

☐ AMENDED REPORT

I. REQUEST FOR ALLOWABLE AND AUTHORIZATION TO TRANSPORT

<sup>1</sup> Operator name and Address LOGOS Operating, LLC 2010 Afton Place Farmington, NM 87401		<sup>2</sup> OGRID Number 289408
		<sup>3</sup> Reason for Filing Code/ Effective Date RT
<sup>4</sup> API Number 30 - 045-38179	<sup>5</sup> Pool Name BASIN MANCOS	<sup>6</sup> Pool Code 97232
<sup>7</sup> Property Code 330856	<sup>8</sup> Property Name OMEGA 2308 03 COM	<sup>9</sup> Well Number 4H

II. <sup>10</sup> Surface Location

UI or lot no. H	Section 3	Township 23N	Range 8W	Lot Idn	Feet from the 1938	North/South Line NORTH	Feet from the 223	East/West line EAST	County SAN JUAN
--------------------	--------------	-----------------	-------------	---------	-----------------------	---------------------------	----------------------	------------------------	--------------------

<sup>11</sup> Bottom Hole Location

UL or lot no. D	Section 1	Township 23N	Range 8W	Lot Idn 4	Feet from the 738	North/South line NORTH	Feet from the 1096	East/West line WEST	County SAN JUAN
<sup>12</sup> Lse Code F	<sup>13</sup> Producing Method Code F	<sup>14</sup> Gas Connection Date	<sup>15</sup> C-129 Permit Number		<sup>16</sup> C-129 Effective Date		<sup>17</sup> C-129 Expiration Date		

III. Oil and Gas Transporters

<sup>18</sup> Transporter OGRID	<sup>19</sup> Transporter Name and Address	<sup>20</sup> O/G/W
323315	Whiptail Midstream 15W. 6th Street, Suite 2901, Tulsa, OK 74119	O
373888	Harvest Midstream LLC 1755 Arryo Drive, Bloomfield NM 87413	G

IV. Well Completion Data

<sup>21</sup> Spud Date 2/29/2020	<sup>22</sup> Ready Date ~5/28/2021	<sup>23</sup> TD 12,500' MD / 5,468' VD	<sup>24</sup> PBTD ~12,442' MD / 5,468' VD	<sup>25</sup> Perforations ~6,205' - 12,402' MD ~5,439' - 5,468' VD	<sup>26</sup> DHC, MC
<sup>27</sup> Hole Size		<sup>28</sup> Casing & Tubing Size	<sup>29</sup> Depth Set		<sup>30</sup> Sacks Cement
12-1/4"		9-5/8" 36# J-55 LTC	320'		101sxs, 29bbbs, 162cf
8-3/4"		7" 23# J-55 LTC	6102'		740sxs, 273bbbs, 1,534cf
6-1/8"		4-1/2" 11.6# P-110 BTC	12,490'		524sxs, 146bbbs, 817cf
		4-1/2" 11.6# P-110	5942'		No cmt, Tie back to be removed

V. Well Test Data

<sup>31</sup> Date New Oil	<sup>32</sup> Gas Delivery Date ~5/282021	<sup>33</sup> Test Date	<sup>34</sup> Test Length	<sup>35</sup> Tbg. Pressure	<sup>36</sup> Csg. Pressure
<sup>37</sup> Choke Size	<sup>38</sup> Oil	<sup>39</sup> Water	<sup>40</sup> Gas		<sup>41</sup> Test Method
<sup>42</sup> I hereby certify that the rules of the Oil Conservation Division have been complied with and that the information given above is true and complete to the best of my knowledge and belief. Signature: <i>Etta Trujillo</i>			OIL CONSERVATION DIVISION		
Printed name: Etta Trujillo			Approved by: <i>Amy Ferris</i>		
Title: Regulatory Specialist			Title: Data Compliance Manager		
E-mail Address: etrujillo@logosresourcesllc.com			Approval Date: 5/28/21		
Date: 5/26/2021		Phone: (505) 324-4154			

District II  
811 S. First Street, Artesia, NM 88210  
Phone: (575) 748-1283 Fax: (575) 748-9720

District III  
1000 Rio Brazos Road, Aztec, NM 87410  
Phone: (505) 334-6178 Fax: (505) 334-6170

District IV  
1220 S. St. Francis Drive, Santa Fe, NM 87505  
Phone: (505) 476-3460 Fax: (505) 476-3462

## OIL CONSERVATION DIVISION

1220 South St. Francis Drive  
Santa Fe, NM 87505

Submit one copy to  
Appropriate District Office

☒ AMENDED REPORT  
AS DRILLED PLAT

## WELL LOCATION AND ACREAGE DEDICATION PLAT

<sup>4</sup> API Number 30-045-38179		<sup>2</sup> Pool Code 97232	<sup>3</sup> Pool Name BASIN MANCOS	
<sup>4</sup> Property Code 330856	<sup>5</sup> Property Name OMEGA 2308 03 COM			<sup>6</sup> Well Number 4H
<sup>7</sup> GRID No. 289408	<sup>8</sup> Operator Name LOGOS OPERATING, LLC			<sup>9</sup> Elevation 6908 '

<sup>10</sup> Surface Location

UL or lot no.	Section	Township	Range	Lot Idn	Feet from the	North/South line	Feet from the	East/West line	County
H	3	23N	8W		1938	NORTH	223	EAST	SAN JUAN

<sup>11</sup> Bottom Hole Location If Different From Surface

UL or lot no.	Section	Township	Range	Lot Idn	Feet from the	North/South line	Feet from the	East/West line	County
D	1	23N	8W	4	738	NORTH	1096	WEST	SAN JUAN

<sup>12</sup> Dedicated Acres 403.72	W/2 NW/4 - Section 1 N/2 - Section 2	<sup>13</sup> Joint or Infill	<sup>14</sup> Consolidation Code	<sup>15</sup> Order No.
---	---	-------------------------------	----------------------------------	-------------------------

NO ALLOWABLE WILL BE ASSIGNED TO THIS COMPLETION UNTIL ALL INTERESTS HAVE BEEN CONSOLIDATED OR A NON-STANDARD UNIT HAS BEEN APPROVED BY THE DIVISION

17 OPERATOR CERTIFICATION

I hereby certify that the information contained herein is true and complete to the best of my knowledge and belief, and that this organization either owns a working interest or unless mineral interest is shown, including the proposed bottom-hole location or has a right to drill this well at this location pursuant to a contract with an owner of such a mineral or working interest, or to a voluntary pooling agreement or a compulsory pooling order heretofore entered by the division.

Signature Etta Trujillo Date 5/25/2021

Printed Name  
etrujillo@logosresourcesllc.com

E-mail Address

## 18 SURVEYOR CERTIFICATION

I hereby certify that the well location shown on this plat was plotted from field notes of actual surveys made by me or under my supervision, and that the same is true and correct to the best of my belief.

Date Revised: MAY 25, 2021  
Date of Survey: MAY 4, 2019

Signature and Seal of Professional Surveyor



**JASON C. EDWARDS**  
Certificate Number 15269

SURFACE LOCATION (A)  
1938' FNL 223' FEL  
SECTION 3, T23N, R8W  
LAT: 36.258220°N  
LONG: 107.660305°W  
DATUM: NAD1927

N14°38.5'E 1210.5'

POINT-OF-ENTRY (B)  
767' FNL 100' FWL  
SECTION 2, T23N, R8W  
LAT: 36.261435°N  
LONG: 107.659261°W  
DATUM: NAD1927

LAT: 36.261448 °N  
LONG: 107.659871 °W  
DATUM: NAD1983

LAST PERFORATION (C)  
767' FNL 100' FWL  
SECTION 2, T23N, R8W  
LAT: 36.261435°N  
LONG: 107.659261°W  
DATUM: NAD1927

LAT: 36.261448 °N  
LONG: 107.659871 °W  
DATUM: NAD1983

N89°42.9'E 6195.2'

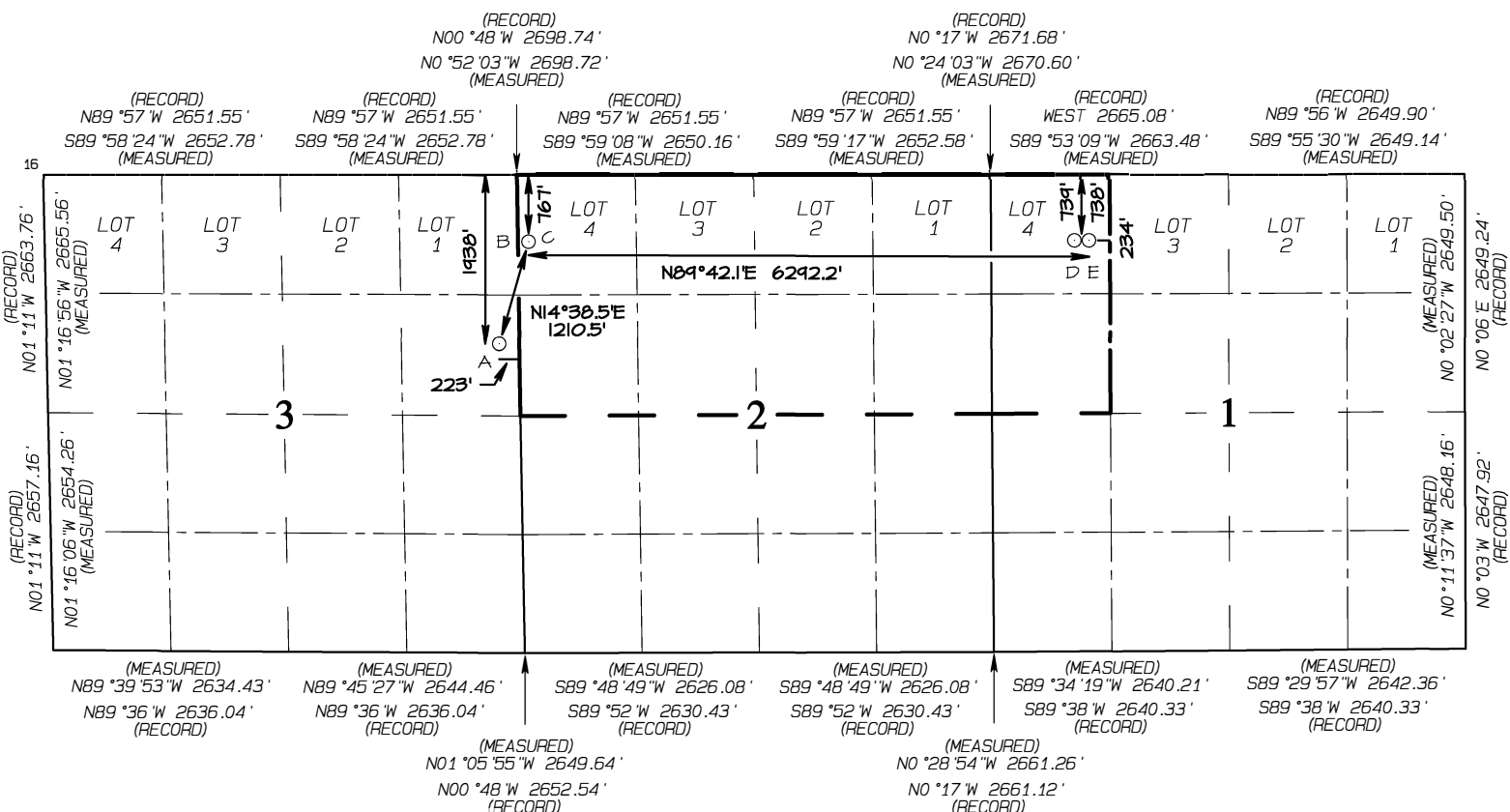
FIRST PERFORATION (D)  
739' FNL 999' FWL  
SECTION 1, T23N, R8W  
LAT: 36.261488 °N  
LONG: 107.638247 °W  
DATUM: NAD1927

LAT: 36.261501 °N  
LONG: 107.638857 °W  
DATUM: NAD1983

N88°53.4'E 97.0'

END-OF-LATERAL (E)  
738' FNL 1096' FWL  
SECTION 1, T23N, R8W  
LAT: 36.261493°N  
LONG: 107.637918°W  
DATUM: NAD1927

LAT: 36.261505 °N  
LONG: 107.638528 °W  
DATUM: NAD1983





## **Logos Opersting LLC**

**San Juan, NM NAD83**

**Chaco 2308-03 Pad**

**Zeus 2308-03 4H**

**OH**

**Design: OH**

## **Geo Survey**

**24 May, 2021**





<b>Company:</b>	Logos Operating LLC	<b>Local Co-ordinate Reference:</b>	Well Zeus 2308-03 4H
<b>Project:</b>	San Juan, NM NAD83	<b>TVD Reference:</b>	GL 6908' & RKB 25' @ 6933.01ft (Aztec 1000)
<b>Site:</b>	Chaco 2308-03 Pad	<b>MD Reference:</b>	GL 6908' & RKB 25' @ 6933.01ft (Aztec 1000)
<b>Well:</b>	Zeus 2308-03 4H	<b>North Reference:</b>	True
<b>Wellbore:</b>	OH	<b>Survey Calculation Method:</b>	Minimum Curvature
<b>Design:</b>	OH	<b>Database:</b>	EDM _16.0

<b>Project</b>	San Juan, NM NAD83		
<b>Map System:</b>	US State Plane 1983	<b>System Datum:</b>	Mean Sea Level
<b>Geo Datum:</b>	North American Datum 1983		
<b>Map Zone:</b>	New Mexico Western Zone		

<b>Site</b>	Chaco 2308-03 Pad			
<b>Site Position:</b>		<b>Northing:</b>	1,913,296.34 usft	<b>Latitude:</b> 36.2581110
<b>From:</b>	Lat/Long	<b>Easting:</b>	2,773,925.33 usft	<b>Longitude:</b> -107.6609110
<b>Position Uncertainty:</b>	0.00 ft	<b>Slot Radius:</b>	13.200 in	<b>Grid Convergence:</b> 0.10 °

<b>Well</b>	Zeus 2308-03 4H			
<b>Well Position</b>	<b>+N/-S</b>	0.00 ft	<b>Northing:</b>	1,913,340.39 usft
	<b>+E/-W</b>	0.00 ft	<b>Easting:</b>	2,773,923.78 usft
<b>Position Uncertainty</b>	0.00 ft	<b>Wellhead Elevation:</b>	0.00 ft	<b>Ground Level:</b> 6,908.01 ft

<b>Wellbore</b>	OH				
<b>Magnetics</b>	<b>Model Name</b>	<b>Sample Date</b>	<b>Declination (°)</b>	<b>Dip Angle (°)</b>	<b>Field Strength (nT)</b>
	HDGM	8/29/2019	8.73	62.82	49,433.30000000

<b>Design</b>	OH				
<b>Audit Notes:</b>					
<b>Version:</b>	1.0	<b>Phase:</b>	ACTUAL	<b>Tie On Depth:</b>	0.00
<b>Vertical Section:</b>	<b>Depth From (TVD)</b>	<b>+N/-S</b>	<b>+E/-W</b>	<b>Direction</b>	
	(ft)	(ft)	(ft)	(°)	
	0.00	0.00	0.00	79.91	

<b>Survey Program</b>	<b>Date</b>	5/18/2021			
<b>From (ft)</b>	<b>To (ft)</b>	<b>Survey (Wellbore)</b>	<b>Tool Name</b>	<b>Description</b>	
353.00	4,789.00	Survey #1 - Surface MWD Survey (OH)	MWD+HDGM	OWSG MWD + HDGM	
4,883.00	6,214.00	Survey #2 - Curve MWD Survey (OH)	MWD+HDGM	OWSG MWD + HDGM	
6,308.00	12,500.00	Survey #3 - Lateral MWD Survey (OH)	MWD+HDGM	OWSG MWD + HDGM	

<b>Survey</b>							
<b>Measured Depth (ft)</b>	<b>Inclination (°)</b>	<b>Azimuth (°)</b>	<b>Vertical Depth (ft)</b>	<b>Northing (usft)</b>	<b>Easting (usft)</b>	<b>Latitude (°)</b>	<b>Longitude (°)</b>
0.00	0.00	0.00	0.00	1,913,340.39	2,773,923.78	36.2582320	-107.6609160
353.00	1.23	260.10	352.97	1,913,339.73	2,773,920.05	36.2582302	-107.6609287
<b>First Surface MWD Survey</b>							
448.00	0.70	237.07	447.96	1,913,339.23	2,773,918.56	36.2582289	-107.6609337
543.00	0.83	255.35	542.95	1,913,338.74	2,773,917.41	36.2582275	-107.6609376
637.00	2.46	343.07	636.92	1,913,340.50	2,773,916.16	36.2582323	-107.6609419
731.00	4.44	343.51	730.74	1,913,345.91	2,773,914.53	36.2582472	-107.6609474
825.00	4.09	341.84	824.48	1,913,352.58	2,773,912.44	36.2582656	-107.6609544
920.00	4.09	340.34	919.24	1,913,358.99	2,773,910.23	36.2582832	-107.6609618
1,014.00	4.04	333.84	1,013.01	1,913,365.11	2,773,907.63	36.2583000	-107.6609706



<b>Company:</b>	Logos Operating LLC	<b>Local Co-ordinate Reference:</b>	Well Zeus 2308-03 4H
<b>Project:</b>	San Juan, NM NAD83	<b>TVD Reference:</b>	GL 6908' & RKB 25' @ 6933.01ft (Aztec 1000)
<b>Site:</b>	Chaco 2308-03 Pad	<b>MD Reference:</b>	GL 6908' & RKB 25' @ 6933.01ft (Aztec 1000)
<b>Well:</b>	Zeus 2308-03 4H	<b>North Reference:</b>	True
<b>Wellbore:</b>	OH	<b>Survey Calculation Method:</b>	Minimum Curvature
<b>Design:</b>	OH	<b>Database:</b>	EDM_16.0

Survey							
Measured Depth (ft)	Inclination (°)	Azimuth (°)	Vertical Depth (ft)	Northing (usft)	Easting (usft)	Latitude (°)	Longitude (°)
1,108.00	4.61	335.60	1,106.74	1,913,371.52	2,773,904.60	36.2583176	-107.6609809
1,203.00	4.79	338.32	1,201.42	1,913,378.68	2,773,901.54	36.2583373	-107.6609912
1,297.00	5.19	334.10	1,295.06	1,913,386.14	2,773,898.22	36.2583578	-107.6610024
1,391.00	7.25	341.57	1,388.50	1,913,395.59	2,773,894.47	36.2583838	-107.6610151
1,486.00	8.79	349.66	1,482.58	1,913,408.41	2,773,891.25	36.2584190	-107.6610259
1,580.00	10.41	347.20	1,575.26	1,913,423.76	2,773,888.05	36.2584612	-107.6610367
1,674.00	11.12	336.65	1,667.61	1,913,440.35	2,773,882.55	36.2585068	-107.6610552
1,768.00	12.39	329.79	1,759.64	1,913,457.38	2,773,873.85	36.2585536	-107.6610846
1,862.00	14.02	333.31	1,851.16	1,913,476.25	2,773,863.63	36.2586055	-107.6611192
1,956.00	16.57	329.79	1,941.82	1,913,497.99	2,773,851.73	36.2586653	-107.6611594
2,051.00	17.36	328.39	2,032.69	1,913,521.74	2,773,837.44	36.2587306	-107.6612078
2,145.00	18.76	325.75	2,122.05	1,913,546.15	2,773,821.54	36.2587977	-107.6612615
2,239.00	19.51	328.65	2,210.86	1,913,572.02	2,773,804.82	36.2588689	-107.6613181
2,334.00	21.23	332.08	2,299.92	1,913,600.74	2,773,788.46	36.2589479	-107.6613734
2,428.00	20.26	330.23	2,387.83	1,913,629.88	2,773,772.36	36.2590280	-107.6614279
2,522.00	19.29	328.48	2,476.28	1,913,657.21	2,773,756.11	36.2591032	-107.6614828
2,616.00	20.48	330.59	2,564.68	1,913,684.74	2,773,739.87	36.2591789	-107.6615377
2,711.00	19.95	330.41	2,653.83	1,913,713.29	2,773,723.65	36.2592574	-107.6615926
2,805.00	19.64	330.59	2,742.27	1,913,740.97	2,773,707.93	36.2593335	-107.6616457
2,900.00	18.54	329.27	2,832.05	1,913,767.83	2,773,692.32	36.2594073	-107.6616985
2,995.00	18.37	329.18	2,922.16	1,913,793.64	2,773,676.89	36.2594783	-107.6617507
3,106.00	18.15	330.50	3,027.57	1,913,823.68	2,773,659.36	36.2595609	-107.6618100
3,201.00	19.20	336.39	3,117.58	1,913,850.85	2,773,645.77	36.2596356	-107.6618559
3,295.00	20.30	333.93	3,206.05	1,913,879.63	2,773,632.36	36.2597148	-107.6619012
3,389.00	19.34	332.96	3,294.48	1,913,908.12	2,773,618.07	36.2597931	-107.6619495
3,483.00	19.12	330.50	3,383.23	1,913,935.36	2,773,603.36	36.2598680	-107.6619992
3,578.00	17.75	328.04	3,473.36	1,913,961.16	2,773,587.99	36.2599389	-107.6620512
3,673.00	19.34	328.21	3,563.42	1,913,986.79	2,773,571.99	36.2600094	-107.6621054
3,767.00	21.05	326.81	3,651.64	1,914,014.12	2,773,554.50	36.2600846	-107.6621645
3,862.00	20.87	326.02	3,740.36	1,914,042.39	2,773,535.65	36.2601624	-107.6622283
3,956.00	19.64	324.08	3,828.54	1,914,069.04	2,773,516.98	36.2602356	-107.6622915
4,051.00	20.74	324.26	3,917.70	1,914,095.59	2,773,497.74	36.2603087	-107.6623566
4,145.00	19.12	323.47	4,006.07	1,914,121.44	2,773,478.80	36.2603798	-107.6624206
4,240.00	16.96	325.84	4,096.40	1,914,145.38	2,773,461.72	36.2604456	-107.6624784
4,334.00	18.33	330.67	4,185.98	1,914,169.58	2,773,446.74	36.2605122	-107.6625291
4,429.00	21.27	331.55	4,275.35	1,914,197.74	2,773,431.16	36.2605896	-107.6625818
4,523.00	20.83	330.50	4,363.08	1,914,227.24	2,773,414.75	36.2606707	-107.6626373
4,617.00	17.49	328.12	4,451.86	1,914,253.77	2,773,399.01	36.2607437	-107.6626905
4,695.00	15.38	326.28	4,526.67	1,914,272.30	2,773,387.04	36.2607946	-107.6627310
4,789.00	16.17	341.92	4,617.17	1,914,295.10	2,773,376.01	36.2608573	-107.6627683
<b>Last Surface MWD Survey</b>							
4,883.00	15.34	356.34	4,707.67	1,914,319.96	2,773,371.11	36.2609256	-107.6627847
<b>First Curve MWD Survey</b>							
4,978.00	19.07	6.09	4,798.42	1,914,347.95	2,773,371.91	36.2610025	-107.6627819



<b>Company:</b>	Logos Operating LLC	<b>Local Co-ordinate Reference:</b>	Well Zeus 2308-03 4H
<b>Project:</b>	San Juan, NM NAD83	<b>TVD Reference:</b>	GL 6908' & RKB 25' @ 6933.01ft (Aztec 1000)
<b>Site:</b>	Chaco 2308-03 Pad	<b>MD Reference:</b>	GL 6908' & RKB 25' @ 6933.01ft (Aztec 1000)
<b>Well:</b>	Zeus 2308-03 4H	<b>North Reference:</b>	True
<b>Wellbore:</b>	OH	<b>Survey Calculation Method:</b>	Minimum Curvature
<b>Design:</b>	OH	<b>Database:</b>	EDM_16.0

Survey							
Measured Depth (ft)	Inclination (°)	Azimuth (°)	Vertical Depth (ft)	Northing (usft)	Easting (usft)	Latitude (°)	Longitude (°)
5,072.00	20.39	15.23	4,886.92	1,914,379.03	2,773,377.78	36.2610879	-107.6627617
5,167.00	21.01	43.62	4,976.01	1,914,407.43	2,773,393.87	36.2611658	-107.6627070
5,261.00	29.53	63.13	5,061.09	1,914,430.24	2,773,426.23	36.2612283	-107.6625971
5,356.00	38.85	69.73	5,139.61	1,914,451.28	2,773,475.16	36.2612859	-107.6624310
5,450.00	50.05	74.65	5,206.63	1,914,471.22	2,773,537.74	36.2613403	-107.6622186
5,544.00	55.02	78.87	5,263.80	1,914,488.33	2,773,610.31	36.2613870	-107.6619724
5,640.00	57.48	79.66	5,317.13	1,914,503.33	2,773,688.70	36.2614278	-107.6617064
5,734.00	66.67	85.02	5,361.13	1,914,514.37	2,773,770.88	36.2614577	-107.6614275
5,829.00	73.17	89.06	5,393.74	1,914,519.06	2,773,859.91	36.2614702	-107.6611255
5,924.00	77.83	90.56	5,417.52	1,914,519.52	2,773,951.86	36.2614710	-107.6608136
6,018.00	82.97	92.58	5,433.20	1,914,517.13	2,774,044.47	36.2614640	-107.6604995
6,084.00	89.12	91.17	5,437.75	1,914,515.10	2,774,110.25	36.2614581	-107.6602764
6,203.50	89.89	92.30	5,438.78	1,914,511.69	2,774,229.70	36.2614482	-107.6598713
<b>Last Perf @ 6203' MD - 36.2614482, -107.6598713</b>							
6,214.00	89.96	92.40	5,438.79	1,914,511.28	2,774,240.19	36.2614470	-107.6598357
<b>Last Curve MWD Survey</b>							
6,308.00	86.48	92.40	5,441.71	1,914,507.51	2,774,334.05	36.2614362	-107.6595173
<b>First Lateral MWD Survey</b>							
6,402.00	86.79	93.19	5,447.23	1,914,503.11	2,774,427.79	36.2614236	-107.6591994
6,497.00	84.51	89.06	5,454.44	1,914,501.41	2,774,522.47	36.2614185	-107.6588782
6,622.00	88.33	89.59	5,462.24	1,914,503.10	2,774,647.19	36.2614225	-107.6584552
6,686.00	88.81	93.02	5,463.84	1,914,501.76	2,774,711.15	36.2614185	-107.6582382
6,780.00	92.72	91.35	5,462.58	1,914,498.34	2,774,805.05	36.2614086	-107.6579197
6,875.00	91.23	88.89	5,459.31	1,914,498.31	2,774,899.99	36.2614081	-107.6575977
6,968.00	90.13	88.45	5,458.20	1,914,500.64	2,774,992.95	36.2614140	-107.6572823
7,063.00	89.43	87.66	5,458.57	1,914,504.03	2,775,087.89	36.2614228	-107.6569603
7,158.00	91.01	89.33	5,458.20	1,914,506.69	2,775,182.84	36.2614297	-107.6566382
7,253.00	90.75	89.24	5,456.75	1,914,508.05	2,775,277.82	36.2614329	-107.6563160
7,347.00	89.91	89.06	5,456.20	1,914,509.61	2,775,371.81	36.2614367	-107.6559972
7,442.00	89.03	88.45	5,457.08	1,914,511.84	2,775,466.77	36.2614424	-107.6556751
7,536.00	90.57	90.38	5,457.41	1,914,512.97	2,775,560.76	36.2614450	-107.6553562
7,631.00	90.09	90.38	5,456.86	1,914,512.51	2,775,655.76	36.2614433	-107.6550340
7,725.00	89.43	89.59	5,457.26	1,914,512.70	2,775,749.75	36.2614433	-107.6547152
7,820.00	88.95	89.68	5,458.60	1,914,513.47	2,775,844.74	36.2614450	-107.6543930
7,914.00	89.25	92.58	5,460.08	1,914,511.79	2,775,938.70	36.2614399	-107.6540743
8,008.00	91.23	92.75	5,459.68	1,914,507.58	2,776,032.60	36.2614278	-107.6537558
8,103.00	90.66	92.58	5,458.12	1,914,503.34	2,776,127.50	36.2614157	-107.6534339
8,197.00	90.48	91.52	5,457.18	1,914,500.14	2,776,221.43	36.2614064	-107.6531153
8,292.00	90.22	91.35	5,456.60	1,914,497.93	2,776,316.41	36.2613999	-107.6527932
8,386.00	90.40	91.52	5,456.09	1,914,495.75	2,776,410.38	36.2613934	-107.6524744
8,481.00	90.22	91.87	5,455.58	1,914,493.10	2,776,505.34	36.2613856	-107.6521523
8,575.00	91.45	90.29	5,454.21	1,914,491.50	2,776,599.31	36.2613808	-107.6518336
8,669.00	92.59	90.12	5,450.90	1,914,491.33	2,776,693.25	36.2613798	-107.6515149
8,763.00	88.33	88.71	5,450.14	1,914,492.46	2,776,787.22	36.2613824	-107.6511962
8,858.00	87.36	88.45	5,453.71	1,914,494.98	2,776,882.12	36.2613889	-107.6508743



<b>Company:</b>	Logos Operating LLC	<b>Local Co-ordinate Reference:</b>	Well Zeus 2308-03 4H
<b>Project:</b>	San Juan, NM NAD83	<b>TVD Reference:</b>	GL 6908' & RKB 25' @ 6933.01ft (Aztec 1000)
<b>Site:</b>	Chaco 2308-03 Pad	<b>MD Reference:</b>	GL 6908' & RKB 25' @ 6933.01ft (Aztec 1000)
<b>Well:</b>	Zeus 2308-03 4H	<b>North Reference:</b>	True
<b>Wellbore:</b>	OH	<b>Survey Calculation Method:</b>	Minimum Curvature
<b>Design:</b>	OH	<b>Database:</b>	EDM_16.0

Survey							
Measured Depth (ft)	Inclination (°)	Azimuth (°)	Vertical Depth (ft)	Northing (usft)	Easting (usft)	Latitude (°)	Longitude (°)
8,953.00	86.66	87.92	5,458.67	1,914,498.15	2,776,976.93	36.2613971	-107.6505527
9,047.00	88.73	87.57	5,462.45	1,914,502.02	2,777,070.77	36.2614072	-107.6502343
9,141.00	90.48	85.72	5,463.10	1,914,507.68	2,777,164.59	36.2614223	-107.6499161
9,236.00	90.44	86.16	5,462.33	1,914,514.58	2,777,259.34	36.2614407	-107.6495946
9,331.00	90.09	85.28	5,461.89	1,914,521.84	2,777,354.06	36.2614602	-107.6492733
9,447.00	90.26	85.90	5,461.54	1,914,530.96	2,777,469.70	36.2614846	-107.6488810
9,541.00	91.49	87.92	5,460.10	1,914,536.19	2,777,563.53	36.2614985	-107.6485626
9,636.00	91.93	88.01	5,457.27	1,914,539.74	2,777,658.42	36.2615078	-107.6482408
9,730.00	89.47	89.15	5,456.12	1,914,542.23	2,777,752.37	36.2615141	-107.6479221
9,824.00	89.74	89.15	5,456.77	1,914,543.79	2,777,846.36	36.2615179	-107.6476032
9,918.00	89.47	89.33	5,457.42	1,914,545.21	2,777,940.35	36.2615213	-107.6472844
10,013.00	89.12	88.97	5,458.59	1,914,546.79	2,778,035.32	36.2615251	-107.6469622
10,108.00	88.81	89.50	5,460.30	1,914,548.22	2,778,130.30	36.2615286	-107.6466401
10,202.00	89.21	89.33	5,461.93	1,914,549.35	2,778,224.28	36.2615312	-107.6463213
10,296.00	90.31	89.68	5,462.32	1,914,550.33	2,778,318.27	36.2615334	-107.6460025
10,390.00	90.62	89.41	5,461.56	1,914,551.24	2,778,412.26	36.2615354	-107.6456836
10,485.00	91.01	89.06	5,460.21	1,914,552.68	2,778,507.24	36.2615388	-107.6453615
10,579.00	90.40	89.24	5,459.05	1,914,554.24	2,778,601.22	36.2615426	-107.6450427
10,673.00	89.65	90.12	5,459.01	1,914,554.93	2,778,695.21	36.2615440	-107.6447238
10,767.00	89.21	89.24	5,459.94	1,914,555.63	2,778,789.21	36.2615454	-107.6444050
10,861.00	88.99	88.99	5,461.42	1,914,557.24	2,778,883.18	36.2615494	-107.6440862
10,956.00	90.22	90.56	5,462.08	1,914,557.79	2,778,978.17	36.2615503	-107.6437640
11,050.00	90.26	90.82	5,461.68	1,914,556.82	2,779,072.17	36.2615472	-107.6434452
11,144.00	90.22	89.59	5,461.29	1,914,556.65	2,779,166.16	36.2615462	-107.6431264
11,239.00	89.91	89.59	5,461.18	1,914,557.50	2,779,261.16	36.2615480	-107.6428041
11,333.00	89.38	89.59	5,461.76	1,914,558.34	2,779,355.15	36.2615498	-107.6424853
11,427.00	89.38	89.33	5,462.78	1,914,559.40	2,779,449.14	36.2615522	-107.6421665
11,522.00	89.96	92.14	5,463.33	1,914,558.35	2,779,544.12	36.2615488	-107.6418443
11,616.00	90.13	91.70	5,463.25	1,914,555.36	2,779,638.08	36.2615401	-107.6415256
11,710.00	89.21	90.91	5,463.79	1,914,553.39	2,779,732.05	36.2615342	-107.6412069
11,805.00	88.90	91.87	5,465.36	1,914,551.25	2,779,827.01	36.2615278	-107.6408848
11,899.00	88.90	91.52	5,467.17	1,914,548.64	2,779,920.96	36.2615201	-107.6405661
11,994.00	91.14	91.70	5,467.13	1,914,546.14	2,780,015.92	36.2615127	-107.6402440
12,088.00	90.75	91.52	5,465.58	1,914,543.67	2,780,109.87	36.2615054	-107.6399254
12,182.00	88.33	90.64	5,466.34	1,914,542.06	2,780,203.85	36.2615005	-107.6396066
12,276.00	89.87	90.20	5,467.81	1,914,541.54	2,780,297.83	36.2614985	-107.6392878
12,370.00	90.35	89.33	5,467.63	1,914,542.10	2,780,391.83	36.2614995	-107.6389690
12,403.00	90.04	89.13	5,467.52	1,914,542.60	2,780,424.83	36.2615007	-107.6388570
<b>36.2615007, -107.6388570 - First Perf @ 12,403' MD</b>							
12,430.00	89.78	88.97	5,467.56	1,914,543.09	2,780,451.82	36.2615019	-107.6387655
<b>Last Lateral MWD Survey</b>							
12,500.00	89.78	88.97	5,467.83	1,914,544.48	2,780,521.81	36.2615054	-107.6385281
<b>Projection to TD</b>							





## Lonestar Consulting

Geo Survey



<b>Company:</b>	Logos Operating LLC	<b>Local Co-ordinate Reference:</b>	Well Zeus 2308-03 4H
<b>Project:</b>	San Juan, NM NAD83	<b>TVD Reference:</b>	GL 6908' & RKB 25' @ 6933.01ft (Aztec 1000)
<b>Site:</b>	Chaco 2308-03 Pad	<b>MD Reference:</b>	GL 6908' & RKB 25' @ 6933.01ft (Aztec 1000)
<b>Well:</b>	Zeus 2308-03 4H	<b>North Reference:</b>	True
<b>Wellbore:</b>	OH	<b>Survey Calculation Method:</b>	Minimum Curvature
<b>Design:</b>	OH	<b>Database:</b>	EDM _16.0

## Design Annotations

Measured Depth (ft)	Vertical Depth (ft)	Local Coordinates		Comment
		+N/-S (ft)	+E/-W (ft)	
353.00	352.97	-0.65	-3.73	First Surface MWD Survey
4,789.00	4,617.17	955.69	-546.07	Last Surface MWD Survey
4,883.00	4,707.67	980.56	-550.92	First Curve MWD Survey
6,203.50	5,438.78	1,170.76	308.00	Last Perf @ 6203' MD
6,203.50	5,438.78	1,170.76	308.00	36.2614482, -107.6598713
6,214.00	5,438.79	1,170.33	318.49	Last Curve MWD Survey
6,308.00	5,441.71	1,166.40	412.35	First Lateral MWD Survey
12,403.00	5,467.52	1,190.64	6,503.19	36.2615007, -107.6388570
12,403.00	5,467.52	1,190.64	6,503.19	First Perf @ 12,403' MD
12,430.00	5,467.56	1,191.09	6,530.19	Last Lateral MWD Survey
12,500.00	5,467.83	1,192.35	6,600.17	Projection to TD

Checked By: \_\_\_\_\_ Approved By: \_\_\_\_\_ Date: \_\_\_\_\_



Form 3160-5  
(June 2019)UNITED STATES  
DEPARTMENT OF THE INTERIOR  
BUREAU OF LAND MANAGEMENTFORM APPROVED  
OMB No. 1004-0137  
Expires: October 31, 2021**SUNDRY NOTICES AND REPORTS ON WELLS**  
**Do not use this form for proposals to drill or to re-enter an abandoned well. Use Form 3160-3 (APD) for such proposals.**5. Lease Serial No.  
NMNM120374  
6. If Indian, Allottee or Tribe Name**SUBMIT IN TRIPLICATE - Other instructions on page 2**

## 1. Type of Well

☐ Oil Well ☒ Gas Well ☐ Other

## 2. Name of Operator

LOGOS OPERATING, LLC

3a. Address 2010 AFTON PLACE  
FARMINGTON, NM 874013b. Phone No. (include area code)  
(505) 278-87204. Location of Well (Footage, Sec., T., R., M., or Survey Description)  
1938 FNL 223 FEL, SE/NE SEC 03 T23N R08W7. If Unit of CA/Agreement, Name and/or No.  
NMNM1419538. Well Name and No.  
OMEGA 2308 03 COM 4H9. API Well No.  
30-045-3817910. Field and Pool or Exploratory Area  
BASIN MANCOS11. Country or Parish, State  
SAN JUAN COUNTY, NM

## 12. CHECK THE APPROPRIATE BOX(ES) TO INDICATE NATURE OF NOTICE, REPORT OR OTHER DATA

TYPE OF SUBMISSION	TYPE OF ACTION				
<input type="checkbox"/> Notice of Intent	<input type="checkbox"/> Acidize	<input type="checkbox"/> Deepen	<input type="checkbox"/> Production (Start/Resume)	<input type="checkbox"/> Water Shut-Off Well	
<input checked="" type="checkbox"/> Subsequent Report	<input type="checkbox"/> Alter Casing	<input type="checkbox"/> Hydraulic Fracturing	<input type="checkbox"/> Reclamation	<input type="checkbox"/> Integrity	
<input type="checkbox"/> Final Abandonment Notice	<input type="checkbox"/> Casing Repair	<input type="checkbox"/> New Construction	<input type="checkbox"/> Recomplete	<input checked="" type="checkbox"/> Other - Intermediate	
	<input type="checkbox"/> Change Plans	<input type="checkbox"/> Plug and Abandon	<input type="checkbox"/> Temporarily Abandon	Casing	
	<input type="checkbox"/> Convert to Injection	<input type="checkbox"/> Plug Back	<input type="checkbox"/> Water Disposal		

13. Describe Proposed or Completed Operation: Clearly state all pertinent details, including estimated starting date of any proposed work and approximate duration thereof. If the proposal is to deepen directionally or recompletable horizontally, give subsurface locations and measured and true vertical depths of all pertinent markers and zones. Attach the Bond under which the work will be performed or provide the Bond No. on file with BLM/BIA. Required subsequent reports must be filed within 30 days following completion of the involved operations. If the operation results in a multiple completion or recompletable in a new interval, a Form 3160-4 must be filed once testing has been completed. Final Abandonment Notices must be filed only after all requirements, including reclamation, have been completed and the operator has determined that the site is ready for final inspection.)

4/27/21 MIRU AD1000. NU PT BOP. PT 9-5/8" csg to 600psi/30min. Good test. Pick up BHA and RIH w/8-3/4" bit, DO 9-5/8" shoe track, drill ahead to 350'.  
 4/28/21 Cont to drill to 4678'. Circ. TOOH BHA  
 4/29/21 TIH w/bit curve assembly, RIH, build curve to 5312'.  
 4/30/21 Drill to INT TD @ 6144'. Circ. TOOH w/bit curve assembly.  
 5/1/21 TIH & reamed w/8-3/4 bit. Circ. LD bit. TOOH. RIH w/7" to 3121'.  
 5/2/21 Set 7" J-55 23# LTC csg @ 6102' w/FC @ 6057'. RD csg crew. RU cementers. Pumped 30bbls FW, CMT lead w/520sxs(215bbls, 1206cf) ASTM Type III @ 12.3ppg, 2.32yld, and Tail w/220sxs(58bbls, 328cf) CLASS G @ 13.5ppg, 1.49yld. Drop plug, displace w/239bbls FW. Circ 71bbls cmt to surface. Bump plug @ 07:51hr. RD cmt crew. 16:00 hrs, test 7" csg @ 1500psi/30mins. Good test.

14. I hereby certify that the foregoing is true and correct. Name (Printed/Typed)

Etta Trujillo

Title Regulatory Specialist

Signature



Date 05/11/2021

**THE SPACE FOR FEDERAL OR STATE OFFICE USE**

Approved by

Title

Date

Conditions of approval, if any, are attached. Approval of this notice does not warrant or certify that the applicant holds legal or equitable title to those rights in the subject lease which would entitle the applicant to conduct operations thereon.

Office

Title 18 U.S.C Section 1001 and Title 43 U.S.C Section 1212, make it a crime for any person knowingly and willfully to make to any department or agency of the United States any false, fictitious or fraudulent statements or representations as to any matter within its jurisdiction.

(Instructions on page 2)

Form 3160-5  
(June 2019)UNITED STATES  
DEPARTMENT OF THE INTERIOR  
BUREAU OF LAND MANAGEMENTFORM APPROVED  
OMB No. 1004-0137  
Expires: October 31, 2021**SUNDRY NOTICES AND REPORTS ON WELLS**  
**Do not use this form for proposals to drill or to re-enter an abandoned well. Use Form 3160-3 (APD) for such proposals.**5. Lease Serial No.  
NMNM120374  
6. If Indian, Allottee or Tribe Name**SUBMIT IN TRIPLICATE - Other instructions on page 2**

## 1. Type of Well

☐ Oil Well ☒ Gas Well ☐ Other

## 2. Name of Operator

LOGOS OPERATING, LLC

3a. Address 2010 AFTON PLACE  
FARMINGTON, NM 874013b. Phone No. (include area code)  
(505) 278-87204. Location of Well (Footage, Sec., T., R., M., or Survey Description)  
1938 FNL 223 FEL, SE/NE (H) SEC 03 T23N R08W7. If Unit of CA/Agreement, Name and/or No.  
NMNM1419538. Well Name and No.  
OMEGA 2308 03 COM 4H9. API Well No.  
30-045-3817910. Field and Pool or Exploratory Area  
BASIN MANCOS11. Country or Parish, State  
SAN JUAN COUNTY, NM

## 12. CHECK THE APPROPRIATE BOX(ES) TO INDICATE NATURE OF NOTICE, REPORT OR OTHER DATA

TYPE OF SUBMISSION	TYPE OF ACTION				
<input type="checkbox"/> Notice of Intent	<input type="checkbox"/> Acidize	<input type="checkbox"/> Deepen	<input type="checkbox"/> Production (Start/Resume)	<input type="checkbox"/> Water Shut-Off Well	
<input checked="" type="checkbox"/> Subsequent Report	<input type="checkbox"/> Alter Casing	<input type="checkbox"/> Hydraulic Fracturing	<input type="checkbox"/> Reclamation	<input type="checkbox"/> Integrity	
<input type="checkbox"/> Final Abandonment Notice	<input type="checkbox"/> Casing Repair	<input type="checkbox"/> New Construction	<input type="checkbox"/> Recomplete	<input checked="" type="checkbox"/> Other - Production	
	<input type="checkbox"/> Change Plans	<input type="checkbox"/> Plug and Abandon	<input type="checkbox"/> Temporarily Abandon	Liner	
	<input type="checkbox"/> Convert to Injection	<input type="checkbox"/> Plug Back	<input type="checkbox"/> Water Disposal		

13. Describe Proposed or Completed Operation: Clearly state all pertinent details, including estimated starting date of any proposed work and approximate duration thereof. If the proposal is to deepen directionally or recompleat horizontally, give subsurface locations and measured and true vertical depths of all pertinent markers and zones. Attach the Bond under which the work will be performed or provide the Bond No. on file with BLM/BIA. Required subsequent reports must be filed within 30 days following completion of the involved operations. If the operation results in a multiple completion or recompleat in a new interval, a Form 3160-4 must be filed once testing has been completed. Final Abandonment Notices must be filed only after all requirements, including reclamation, have been completed and the operator has detennined that the site is ready for final inspection.)

5/3/21 Rig safety shut down.

5/4/21 TIH w/6-1/8" bit to 5950', DO cmt &amp; 7" shoe track. Drill 6-1/8" hole to 7414'.

5/5/21 Drill ahead to 9401'. TOO H with bit, RIH with new 6-1/8" bit. Cont drilling lateral to 12,500' TD reached 5/7/21 @ 06:00hr.

5/7/21 Circ, sweep as needed, pump slug &amp; TOO H, LD bit. RU csg crew.

5/8/21 RIH w/154jts 4-1/2" P-110, 11.6# BTC liner csg & land @ 12,490', w/FC @ 12,444', LC @ 12,442', Toe Sleeves @ 12,387'.  
TOL 5942' w/Packer @ 5964'. RD csg crew.5/8/21 RU cementers. Pre-flushed w/10bbbs FW, 40bbbs spacer. Pumped 524sx (146bbbs, 817cuft) Class G cmt @ 13.3ppg, 1.56yld.  
Displaced w/159bbbs KCL. Bumped plug @ 16:50hr on 5/8/21. Circ 30bbbs cmt to surface. PT packer for 5 mins @ 1050psi, good test.  
RD cementers. TOO H w/liner setting tool, ND & cap well. Walk rig back to Omega 2308 03 5H.5/14/21 Make up seal assembly. TIH, w/ tieback string 137jts, 4-1/2", 11.6#, P-110 and tieback @ 5942'. Space out and land w/ 30K.  
ND BOP. NU master valve. Pressure test 4-1/2" prod liner @ 1500psi/30min, good test. RDMO.

14. I hereby certify that the foregoing is true and correct. Name (Printed/Typed)

Tamra Sessions

Title Regulatory Specialist

Signature

*Tamra Sessions*

Date 05/17/2021

**THE SPACE FOR FEDERAL OR STATE OFFICE USE**

Approved by

Title

Date

Conditions of approval, if any, are attached. Approval of this notice does not warrant or certify that the applicant holds legal or equitable title to those rights in the subject lease which would entitle the applicant to conduct operations thereon.

Office

Title 18 U.S.C Section 1001 and Title 43 U.S.C Section 1212, make it a crime for any person knowingly and willfully to make to any department or agency of the United States any false, fictitious or fraudulent statements or representations as to any matter within its jurisdiction.

(Instructions on page 2)

Form 3160-5  
(June 2015)UNITED STATES  
DEPARTMENT OF THE INTERIOR  
BUREAU OF LAND MANAGEMENTFORM APPROVED  
OMB NO. 1004-0137  
Expires: January 31, 2018**SUNDRY NOTICES AND REPORTS ON WELLS**  
*Do not use this form for proposals to drill or to re-enter an abandoned well. Use form 3160-3 (APD) for such proposals.*5. Lease Serial No.  
NMNM120374

6. If Indian, Allottee or Tribe Name

7. If Unit or CA/Agreement, Name and/or No.

**SUBMIT IN TRIPLICATE - Other instructions on page 2**8. Well Name and No.  
ZEUS 2308 03 4H9. API Well No.  
30-045-38179-00-X110. Field and Pool or Exploratory Area  
BASIN MANCOS11. County or Parish, State  
SAN JUAN COUNTY, NM**12. CHECK THE APPROPRIATE BOX(ES) TO INDICATE NATURE OF NOTICE, REPORT, OR OTHER DATA**

TYPE OF SUBMISSION	TYPE OF ACTION			
<input type="checkbox"/> Notice of Intent	<input type="checkbox"/> Acidize	<input type="checkbox"/> Deepen	<input type="checkbox"/> Production (Start/Resume)	<input type="checkbox"/> Water Shut-Off
<input checked="" type="checkbox"/> Subsequent Report	<input type="checkbox"/> Alter Casing	<input type="checkbox"/> Hydraulic Fracturing	<input type="checkbox"/> Reclamation	<input type="checkbox"/> Well Integrity
<input type="checkbox"/> Final Abandonment Notice	<input type="checkbox"/> Casing Repair	<input type="checkbox"/> New Construction	<input type="checkbox"/> Recomplete	<input checked="" type="checkbox"/> Other Well Spud
	<input type="checkbox"/> Change Plans	<input type="checkbox"/> Plug and Abandon	<input type="checkbox"/> Temporarily Abandon	
	<input type="checkbox"/> Convert to Injection	<input type="checkbox"/> Plug Back	<input type="checkbox"/> Water Disposal	

13. Describe Proposed or Completed Operation: Clearly state all pertinent details, including estimated starting date of any proposed work and approximate duration thereof. If the proposal is to deepen directionally or recompleat horizontally, give subsurface locations and measured and true vertical depths of all pertinent markers and zones. Attach the Bond under which the work will be performed or provide the Bond No. on file with BLM/BIA. Required subsequent reports must be filed within 30 days following completion of the involved operations. If the operation results in a multiple completion or recompleat in a new interval, a Form 3160-4 must be filed once testing has been completed. Final Abandonment Notices must be filed only after all requirements, including reclamation, have been completed and the operator has determined that the site is ready for final inspection.

2/29/2020 MOB to location. PJSM. Mix mud. Drill spud 12-1/4" hole @ 11:45hr to 325'TD (GL). TIH, & circulate. TOOH, w/ DP & BHA. RIH, & run w/ 16jts of 9-5/8", 36# J-55 LT&C casing set @ 320' (GL) w/ FC @ 298' (GL). Pumped 10bbbls of FW spacer. Pumped w/ 101sxs (29bbbls, 162cf) Type I-II cement w/ 20% flyash @ 14.5ppg into casing. Dropped plug & displaced w/ 23bbbls of FW. Bumped plug @ 200psi @ 15:15hrs. Circulated 8bbbls of good cement to surface. RD. SDFN. WOC.

Pressure test will be reported on the next casing sundry.

14. I hereby certify that the foregoing is true and correct.

**Electronic Submission #509775 verified by the BLM Well Information System  
For LOGOS OPERATING LLC, sent to the Farmington  
Committed to AFMSS for processing by JOE KILLINS on 04/06/2020 (20JK0148SE)**

Name (Printed/Typed) MARIE E FLOREZ

Title REGULATORY SPECIALIST

Signature (Electronic Submission)

Date 04/06/2020

**THIS SPACE FOR FEDERAL OR STATE OFFICE USE**

Approved By **ACCEPTED**

JOE KILLINS  
Title ENGINEER

Date 04/06/2020

Conditions of approval, if any, are attached. Approval of this notice does not warrant or certify that the applicant holds legal or equitable title to those rights in the subject lease which would entitle the applicant to conduct operations thereon.

Office Farmington

Title 18 U.S.C. Section 1001 and Title 43 U.S.C. Section 1212, make it a crime for any person knowingly and willfully to make to any department or agency of the United States any false, fictitious or fraudulent statements or representations as to any matter within its jurisdiction.

(Instructions on page 2)

**\*\* BLM REVISED \*\* BLM REVISED \*\* BLM REVISED \*\* BLM REVISED \*\* BLM REVISED \*\***

**BLM**

**District I**  
1625 N. French Dr., Hobbs, NM 88240  
Phone:(575) 393-6161 Fax:(575) 393-0720  
**District II**  
811 S. First St., Artesia, NM 88210  
Phone:(575) 748-1283 Fax:(575) 748-9720  
**District III**  
1000 Rio Brazos Rd., Aztec, NM 87410  
Phone:(505) 334-6178 Fax:(505) 334-6170  
**District IV**  
1220 S. St Francis Dr., Santa Fe, NM 87505  
Phone:(505) 476-3470 Fax:(505) 476-3462

**State of New Mexico**  
**Energy, Minerals and Natural Resources**  
**Oil Conservation Division**  
**1220 S. St Francis Dr.**  
**Santa Fe, NM 87505**

CONDITIONS  
  
Action 22628

CONDITIONS OF APPROVAL

Operator: LOGOS OPERATING, LLC      2010 Afton Place      Farmington, NM87401				OGRID: 289408	Action Number: 22628	Action Type: C-103N
OCD Reviewer				Condition		
ksimmons				None		

**District I**

1625 N. French Dr., Hobbs, NM 88240  
Phone:(575) 393-6161 Fax:(575) 393-0720

**District II**

811 S. First St., Artesia, NM 88210  
Phone:(575) 748-1283 Fax:(575) 748-9720

**District III**

1000 Rio Brazos Rd., Aztec, NM 87410  
Phone:(505) 334-6178 Fax:(505) 334-6170

**District IV**

1220 S. St Francis Dr., Santa Fe, NM 87505  
Phone:(505) 476-3470 Fax:(505) 476-3462

**State of New Mexico**  
**Energy, Minerals and Natural Resources**  
**Oil Conservation Division**  
**1220 S. St Francis Dr.**  
**Santa Fe, NM 87505**

ACKNOWLEDGMENTS

Action 29654

**ACKNOWLEDGMENTS**

Operator: LOGOS OPERATING, LLC 2010 Afton Place Farmington, NM 87401	OGRID: 289408
	Action Number: 29654
	Action Type: [C-104] Completion Packet (C-104C)

**ACKNOWLEDGMENTS**

<input checked="" type="checkbox"/>	I hereby certify that the required Water Use Report has been, or will be, submitted for this wells completion.
<input checked="" type="checkbox"/>	I hereby certify that the required FracFocus disclosure has been, or will be, submitted for this wells completion.



**District I**

1625 N. French Dr., Hobbs, NM 88240  
Phone:(575) 393-6161 Fax:(575) 393-0720

**District II**

811 S. First St., Artesia, NM 88210  
Phone:(575) 748-1283 Fax:(575) 748-9720

**District III**

1000 Rio Brazos Rd., Aztec, NM 87410  
Phone:(505) 334-6178 Fax:(505) 334-6170

**District IV**

1220 S. St Francis Dr., Santa Fe, NM 87505  
Phone:(505) 476-3470 Fax:(505) 476-3462

**State of New Mexico**  
**Energy, Minerals and Natural Resources**  
**Oil Conservation Division**  
**1220 S. St Francis Dr.**  
**Santa Fe, NM 87505**

COMMENTS

Action 29654

**COMMENTS**

Operator: LOGOS OPERATING, LLC 2010 Afton Place Farmington, NM 87401	OGRID: 289408
	Action Number: 29654
	Action Type: [C-104] Completion Packet (C-104C)

**COMMENTS**

Created By	Comment	Comment Date
kpickford	KP GEO Review 5/28/2021	5/28/2021
kpickford	Verbal approval given on 5/28/2021	5/28/2021

**District I**  
1625 N. French Dr., Hobbs, NM 88240  
Phone:(575) 393-6161 Fax:(575) 393-0720  
**District II**  
811 S. First St., Artesia, NM 88210  
Phone:(575) 748-1283 Fax:(575) 748-9720  
**District III**  
1000 Rio Brazos Rd., Aztec, NM 87410  
Phone:(505) 334-6178 Fax:(505) 334-6170  
**District IV**  
1220 S. St Francis Dr., Santa Fe, NM 87505  
Phone:(505) 476-3470 Fax:(505) 476-3462

**State of New Mexico**  
**Energy, Minerals and Natural Resources**  
**Oil Conservation Division**  
**1220 S. St Francis Dr.**  
**Santa Fe, NM 87505**

CONDITIONS  
  
Action 29654

CONDITIONS

Operator: LOGOS OPERATING, LLC 2010 Afton Place Farmington, NM 87401	OGRID: 289408
	Action Number: 29654
	Action Type: [C-104] Completion Packet (C-104C)

CONDITIONS

Created By	Condition	Condition Date
ahvermersch	Points of Disposition ID 4037722 Gas 4037721 Oil	10/21/2021