

Submit a Copy To Appropriate District  
Office  
District I – (575) 393-6161  
1625 N. French Dr., Hobbs, NM 88240  
District II – (575) 748-1283  
811 S. First St., Artesia, NM 88210  
District III – (505) 334-6178  
1000 Rio Brazos Rd., Aztec, NM 87410  
District IV – (505) 476-3460  
1220 S. St. Francis Dr., Santa Fe, NM  
87505

State of New Mexico  
Energy, Minerals and Natural Resources

Form C-103  
Revised July 18, 2013

OIL CONSERVATION DIVISION  
1220 South St. Francis Dr.  
Santa Fe, NM 87505

SUNDRY NOTICES AND REPORTS ON WELLS (DO NOT USE THIS FORM FOR PROPOSALS TO DRILL OR TO DEEPEN OR PLUG BACK TO A DIFFERENT RESERVOIR. USE "APPLICATION FOR PERMIT" (FORM C-101) FOR SUCH PROPOSALS.)		WELL API NO. 30-025-24517
1. Type of Well: Oil Well <input type="checkbox"/> Gas Well <input checked="" type="checkbox"/> Other <input type="checkbox"/>		5. Indicate Type of Lease STATE <input checked="" type="checkbox"/> FEE <input type="checkbox"/>
2. Name of Operator MEWBOURNE OIL COMPANY		6. State Oil & Gas Lease No. L-3881
3. Address of Operator PO BOX 5270; HOBBS, NM 88260		7. Lease Name or Unit Agreement Name STATE 35
4. Well Location Unit Letter <u>K</u> : 1750 feet from the <u>SOUTH</u> line and 1980 feet from the <u>WEST</u> line Section <u>35</u> Township <u>23S</u> Range <u>34E</u> NMPM County <u>LEA</u>		8. Well Number 1
11. Elevation (Show whether DR, RKB, RT, GR, etc.) 3462		9. OGRID Number 14744
		10. Pool name or Wildcat ANTELOPE RIDGE MORROW

12. Check Appropriate Box to Indicate Nature of Notice, Report or Other Data

NOTICE OF INTENTION TO:		SUBSEQUENT REPORT OF:	
PERFORM REMEDIAL WORK <input type="checkbox"/>	PLUG AND ABANDON <input checked="" type="checkbox"/>	REMEDIAL WORK <input type="checkbox"/>	ALTERING CASING <input type="checkbox"/>
TEMPORARILY ABANDON <input type="checkbox"/>	CHANGE PLANS <input type="checkbox"/>	COMMENCE DRILLING OPNS. <input type="checkbox"/>	P AND A <input type="checkbox"/>
PULL OR ALTER CASING <input type="checkbox"/>	MULTIPLE COMPL <input type="checkbox"/>	CASING/CEMENT JOB <input type="checkbox"/>	
DOWNHOLE COMMINGLE <input type="checkbox"/>			
CLOSED-LOOP SYSTEM <input type="checkbox"/>			
OTHER: <input type="checkbox"/>		OTHER: <input type="checkbox"/>	

13. Describe proposed or completed operations. (Clearly state all pertinent details, and give pertinent dates, including estimated date of starting any proposed work). SEE RULE 19.15.7.14 NMAC. For Multiple Completions: Attach wellbore diagram of proposed completion or recompletion.

Mewbourne Oil Company requests permission to permanently abandon the subject wellbore. Please see attached wellbore schematic and operational procedure.

Note changes to procedure

4" diameter 4' tall Above Ground Marker

SEE ATTACHED CONDITIONS  
OF APPROVAL

Spud Date:

Rig Release Date:

I hereby certify that the information above is true and complete to the best of my knowledge and belief.

SIGNATURE Klay H Kirkes TITLE Engineer DATE 8/19/21

Type or print name Klay H Kirkes E-mail address: kkirkes@mewbourne.com PHONE: 575-393-5905

For State Use Only

APPROVED BY: Kerry Fortner TITLE Compliance Officer A DATE 10/28/21

Conditions of Approval (if any):

Mexbourne Oil Company

ABANDONMENT PROCEDURE

Submitted By: K. Kirkes

Wellname: State 35 #1

Location: 1750' FSL & 1980' FWL  
Sec 35, T23S, R34E  
Lea Co, NM

Date: 7/8/21

Csg Set:	11890' (DV tool @ 7983')	Surf Csg:	16" 65# H40
Csg Size:	7 5/8" 26#,29# N80 & S95 5 1/2" 26# N80 X-line from 11481'	Set @:	364'
Liner:	- 13860' 10 3/4" 40.5#, 45.5# N80 & K55	Tbg:	2 7/8" unknown
Inter Csg:	(DV tool @ 3986')	Pkr set @:	12920' (unknown type)
Set @:	5192'	Perfs:	13305' – 13535'

Procedure:

- 1) MIRU BCM turnkey plugging crew.
- 2) ND WH, NU BOP.
- 3) Attempt to release pkr & POOH w/tbg.
  - a. There are some indications of possible stuck pipe from previous operator's well files. If pipe is stuck, MIRU WL & run free point @ CCL.
- 4) Run CBL from CIBP to surface, noting DV tool.
- 5) RIH w/tbg & set CIBP @ 13225' (top perf @ 13305', top Morrow @ 13048').
- 6) Circulate 500 bbls 9.0# MLF
- 7) Spot 40 sks Class H neat cmt (380' ±) on top of CIBP.
- 8) WOC 4 hrs & tag plug @ 12998' or higher.
- 9) LD pipe to 11940' (7 5/8" csg shoe @ 11890').
- 10) Spot 25 sks Class H neat cmt (235' ±).
- 11)WOC 4 hrs & tag plug @ 11840' or higher.
- 12)LD pipe to 11531' (5 1/2" LT @ 11481').
- 13)Spot 25 sks Class H neat cmt (150' ±).
- 14)WOC 4 hrs & tag plug @ 11431' or higher.
- 15)LD pipe to 10847' (Top WFCP @ 10797').
- 16)Spot 35 sks Class H neat cmt (150' ±).
- 17)WOC 4 hrs & tag plug @ 10747' or higher.
- 18)LD pipe to 8787' (Top BSPG @ 8737').
- 19)Spot 35 sks Class H neat cmt (150' ±).
- 20)WOC 4 hrs & tag plug @ 8687' or higher.
- 21)LD pipe to 8033' (DV tool @ 7983').
- 22)Spot 35 sks Class H neat cmt (150' ±).
- 23)WOC 4 hrs & tag plug @ 7933' or higher.
  - a. If CBL indicates TOC on 7 5/8" csg above intermediate casing shoe @ 5192', proceed to step 24. If TOC is below casing shoe, need to set one more cement plug across TOC. If TOC is above intermediate casing shoe, need to set plug across TOC at whatever depth it is found.
- 24)POOH w/tbg
- 25)RIH w/WL & perforate @ 5242' (10 3/4" shoe @ 5192').
- 26)Attempt to squeeze formation under shoe to 500#.
- 27)RIH w/tbg to 5242' (10 3/4" csg shoe @ 5192' & top Delaware @ 5165').
- 28)Spot 40 sks Class C neat cmt (150' ±).
- 29)WOC 4 hrs & tag plug @ 5115' or higher.
- 30)POOH to 4045' (Top salt 3995' & intermediate string DV tool @ 3986').
- 31)Spot 35 sks Class C neat (175' ±).
- 32)WOC 4 hrs & tag plug @ 3936' or higher.
- 33)POOH to 1000' (max 3000' between plugs.
  - a. If this is above TOC, need to perforate & squeeze. If not, proceed.
- 34)Spot 35 sks Class C neat (175' ±).
- 35)WOC 4 hrs & tag.
- 36)POOH to 415' (Surface csg shoe @ 364').

*Mexbourne Oil Company*

---

**ABANDONMENT PROCEDURE**

- P&S** 37)Either perforate & squeeze or spot 35 sks Class C neat cmt depending on TOC.
- 38)WOC 4 hrs & tag @ 314' or higher.
- P&S** 39)Depending on CBL and TOC on production casing, either perforate @ 200' & circulate cmt up annulus to surface, or spot from 200' to surface through tbg.
- 40)Top fill & make sure hole remains full.
- 41)Cut off WH & install dry hole marker.

1750' FSL & 1980' FWL, Sec. 35 - T23S - R34E - Lea Co, NM  
API 30-025-24517



# State 35 #001 WBS

1750' FSL & 1980' FWL, Sec. 35 - T23S – R34E - Lea Co, NM  
API 30-025-24517

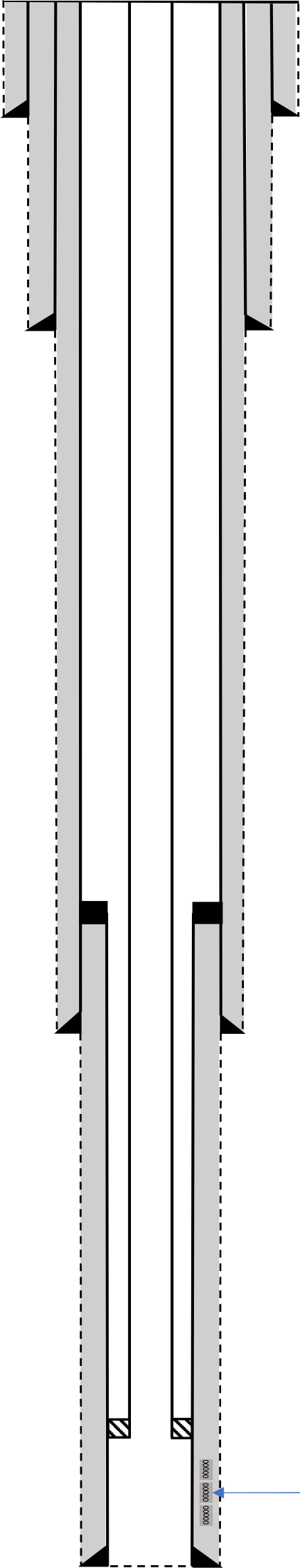
9/17/73 - 20" hole w/16" 65# H40 ST&C, set @ 364' – circ cmt

9/30/73 - 14 3/4" hole w/10 3/4" 40.5#, 45.5#, 51# N80 & K55 ST&C set @ 5192' – 2 stage cmt (DV @ 3986') circ cmt off DV & w/2<sup>nd</sup> stg

10/22/73 – 9 1/2" hole w/7 5/8" 26#, 29# N80 & S95 LT&C set @ 11890'. DV tool @ 7983'. No mention of cmt circulation either off DV or on 2<sup>nd</sup> stage.

6 1/2" hole w/5 1/2" 20# N80 X-line Liner from 11481' - 13860'. WOC. Drilled cmt from 11010' – 11481'. Tested LT to 1000#, held OK.

2 7/8" w/Pkr  
Set @ 12920'



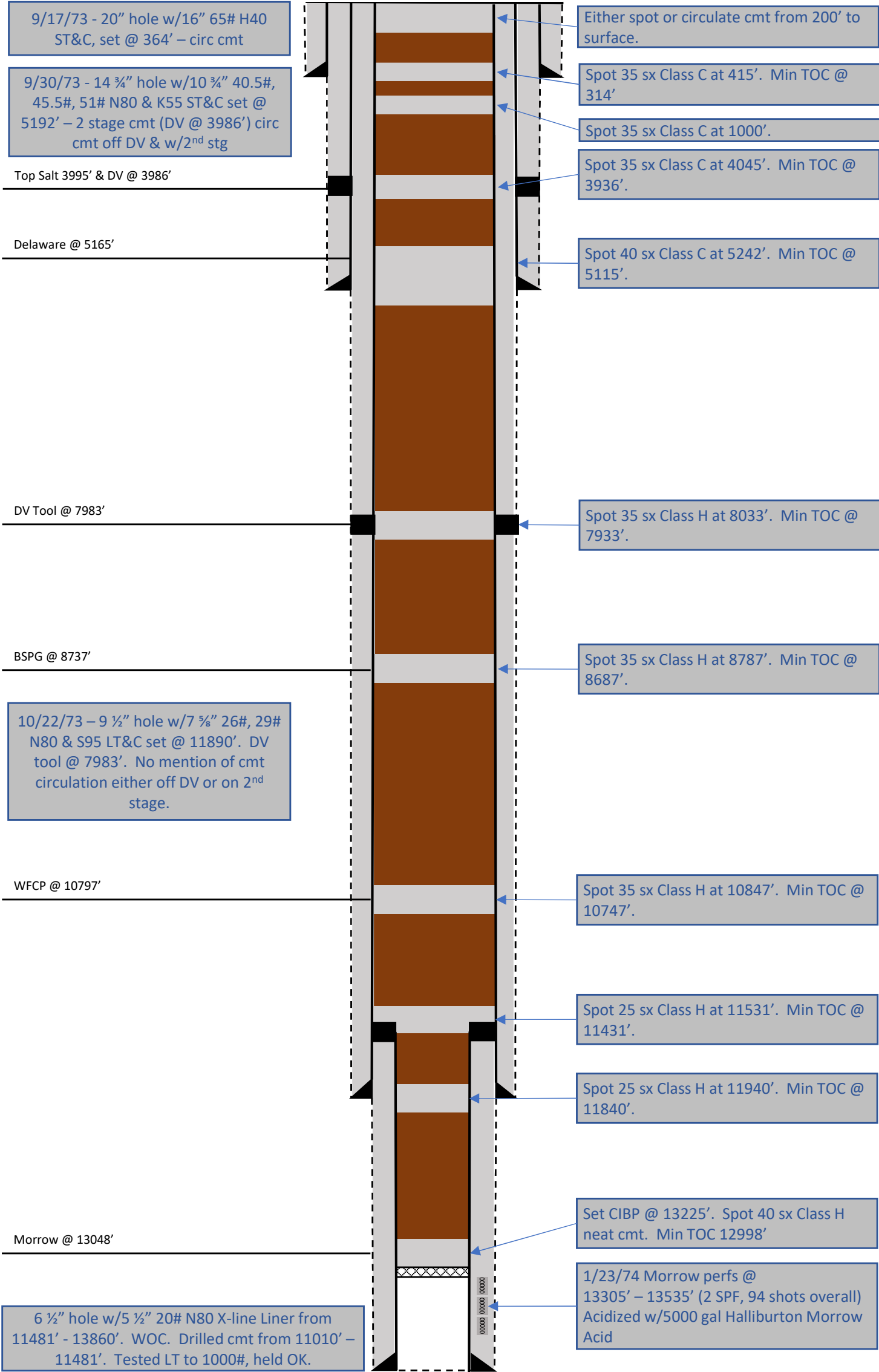
- In 3/93 Asher Oil Company (new operator) submitted a C-103 planning to RU pulling unit, clean out tbg obstruction & return well to production. Production profile indicates this work was completed. No note on whether BHA changed during operation.
- In 11/09 Nadel & Gussman filed C-101 proposing to plug Morrow & recomple to Atoka.
- From 3-4/2010, Nadel & Gussman attempted operations. Tbg was obstructed. Loaded tbg w/20 bbls, squeezed addl 17 bbl in 100 mins @ 2000#. Csg pressure never changed (no HIT?). RIH w/2.25" GR & tag @ 2550'. RIH w/1.9" GR & went to EOT. Tested csg to 500#, held OK. RIH w/free point. 100% free @ 2025', 90% @ 2050', 70% @ 2100', 60% @ 2500', 10% @ 2700', 10% @ 3000'. End of work.

1/23/74 Morrow perfs @ 13305' – 13535' (2 SPF, 94 shots overall) Acidized w/5000 gal Halliburton Morrow Acid



# State 35 #001 Final WBS

1750' FSL & 1980' FWL, Sec. 35 - T23S – R34E - Lea Co, NM  
API 30-025-24517



**CONDITIONS OF APPROVAL  
FOR PLUGGING AND ABANDONMENT  
OCD - Southern District**

The following is a guide or checklist in preparation of a plugging program, this is not all inclusive and care must be exercised in establishing special plugging programs in unique and unusual cases, Notify NMOCD District Office I (Hobbs) at **(575)-263-6633** at least 24 hours before beginning work. After MIRU rig will remain on well until it is plugged to surface. OCD is to be notified before rig down.

**Company representative will be on location during plugging procedures.**

1. A notice of intent to plug and abandon a wellbore is required to be approved before plugging operations are conducted. A cement evaluation tool is required in order to ensure isolation of producing formations, protection of water and correlative rights. A cement bond log or other accepted cement evaluation tool is to be provided to the division for evaluation if one has not been previously run or if the well did not have cement circulated to surface during the original casing cementing job or subsequent cementing jobs. Insure all bradenheads have been exposed, identified and valves are operational prior to rig up.
2. Closed loop system is to be used for entire plugging operation. Upon completion, contents of steel pits are to be hauled to a permitted disposal location.
3. Trucking companies being used to haul oilfield waste fluids to a disposal - commercial or private- shall have an approved NMOCD C-133 permit. A copy of this permit shall be available in each truck used to haul waste products. It is the responsibility of the operator as well as the contractor, to verify that this permit is in place prior to performing work. Drivers shall be able to produce a copy upon request of an NMOCD Field inspector.
4. Filing a subsequent C-103 will serve as notification that the well has been plugged.
5. A final C-103 shall be filed (and a site inspection by NMOCD Inspector to determine if the location is satisfactorily cleaned, all equipment, electric poles and trash has been removed to Meet NMOCD standards) before bonding can be released.
6. If work has not begun within 1 Year of the approval of this procedure, an extension request must be file stating the reason the well has not been plugged.
7. Squeeze pressures are not to exceed 500 psi, unless approval is given by NMOCD.
8. Produced water will not be used during any part of the plugging operation.
9. Mud laden fluids must be placed between all cement plugs mixed at 25 sacks per 100 bbls of water.
10. All cement plugs will be a minimum of 100' in length or a minimum of 25 sacks of cement, whichever is greater. 50' of calculated cement excess required for inside casing plugs and 100% calculated cement excess required on outside casing plugs.
11. Class 'C' cement will be used above 7500 feet.
12. Class 'H' cement will be used below 7500 feet.
13. A cement plug is required to be set 50' above and 50' below, casing stubs, DV tools, attempted casing cut offs, cement tops outside casing, salt sections and anywhere the casing is perforated, these plugs require a 4 hour WOC and then will be tagged
14. All Casing Shoes Will Be Perforated 50' below shoe depth and Attempted to be Squeezed, cement needs to be 50' above and 50' Below Casing Shoe inside the Production Casing.
16. When setting the top out cement plug in production, intermediate and surface casing, wellbores should remain full at least 30 minutes after plugs are set
17. A CIBP is to be set within 100' of production perforations, capped with 100' of cement, WOC 4 hours and tag.
18. A CIBP with 35' of cement may be used in lieu of the 100' plug if set with a bailer. This plug will be placed within 100' of the top perforation, (WOC 4 hrs and tag).



19. No more than 3000' is allowed between cement plugs in cased hole and 2000' in open hole.
20. Some of the Formations to be isolated with cement plugs are: These plugs to be set to isolate formation tops
- A) Fusselman
  - B) Devonian
  - C) Morrow
  - D) Wolfcamp
  - E) Bone Springs
  - F) Delaware
  - G) Any salt sections
  - H) Abo
  - I) Glorieta
  - J) Yates.
  - K) Potash---(In the R-111-P Area (Potash Mine Area),  
A solid cement plug must be set across the salt section. Fluid used to mix the cement shall be saturated with the salts that are common to the section penetrated and in suitable proportions, not more than 3% calcium chloride (by weight of cement) will be considered the desired mixture whenever possible, WOC 4 hours and tag, this plug will be 50' below the bottom and 50' above the top of the Formation.
21. If cement does not exist behind casing strings at recommended formation depths, the casing can be cut and pulled with plugs set at recommended depths. If casing is not pulled, perforations will be shot and cement squeezed behind casing, WOC and tagged. These plugs will be set 50' below formation bottom to 50' above formation top inside the casing.

### **DRY HOLE MARKER REQUIREMENTS**

The operator shall mark the exact location of the plugged and abandoned well with a steel marker not less than four inches in diameter, 3' below ground level with a plate of at least ¼" welded to the top of the casing and the dry hole marker welded on the plate with the following information welded on the dry hole marker:

1. Operator name
2. Lease and Well Number
3. API Number
4. Unit letter
5. Quarter Section (feet from the North, South, East or West)
6. Section, Township and Range
7. Plugging Date
8. County

### **SPECIAL CASES -----AGRICULTURE OR PRARIE CHICKEN BREEDING AREAS**

In these areas, a below ground marker is required with all pertinent information mentioned above on a plate, set 3' below ground level, a picture of the plate will be supplied to NMOCD for record, the exact location of the marker (longitude and latitude by GPS) will be provided to NMOCD (We typically require a current survey to verify the GPS)

### **SITE REMEDIATION DUE WITHIN ONE YEAR OF WELL PLUGGING COMPLETION**



Mexbourne Oil Company

ABANDONMENT PROCEDURE

Submitted By: K. Kirkes

**Wellname:** State 35 #1

**Location:** 1750' FSL & 1980' FWL  
Sec 35, T23S, R34E  
Lea Co, NM

**Date:** 7/8/21

<b>Csg Set:</b> <u>11890' (DV tool @ 7983')</u>	<b>Surf Csg:</b> <u>16" 65# H40</u>
<b>Csg Size:</b> <u>7 5/8" 26#,29# N80 &amp; S95</u> <u>5 1/2" 26# N80 X-line from 11481'</u>	<b>Set @:</b> <u>364'</u>
<b>Liner:</b> <u>- 13860'</u> <u>10 3/4" 40.5#, 45.5# N80 &amp; K55</u>	<b>Tbg:</b> <u>2 7/8" unknown</u>
<b>Inter Csg:</b> <u>(DV tool @ 3986')</u>	<b>Pkr set @:</b> <u>12920' (unknown type)</u>
<b>Set @:</b> <u>5192'</u>	<b>Perfs:</b> <u>13305' – 13535'</u>

**Procedure:**

- 1) MIRU BCM turnkey plugging crew.
- 2) ND WH, NU BOP.
- 3) Attempt to release pkr & POOH w/tbg.
  - a. There are some indications of possible stuck pipe from previous operator's well files. If pipe is stuck, MIRU WL & run free point @ CCL.
- 4) Run CBL from CIBP to surface, noting DV tool.
- 5) RIH w/tbg & set CIBP @ 13225' (top perf @ 13305', top Morrow @ 13048').
- 6) Circulate 500 bbls 9.0# MLF
- 7) Spot 40 sks Class H neat cmt (380' ±) on top of CIBP.
- 8) WOC 4 hrs & tag plug @ 12998' or higher.
- 9) LD pipe to 11940' (7 5/8" csg shoe @ 11890').
- 10)Spot 25 sks Class H neat cmt (235' ±).
- 11)WOC 4 hrs & tag plug @ 11840' or higher.
- 12)LD pipe to 11531' (5 1/2" LT @ 11481').
- 13)Spot 25 sks Class H neat cmt (150' ±).
- 14)WOC 4 hrs & tag plug @ 11431' or higher.
- 15)LD pipe to 10847' (Top WFCP @ 10797').
- 16)Spot 35 sks Class H neat cmt (150' ±).
- 17)WOC 4 hrs & tag plug @ 10747' or higher.
- 18)LD pipe to 8787' (Top BSPG @ 8737').
- 19)Spot 35 sks Class H neat cmt (150' ±).
- 20)WOC 4 hrs & tag plug @ 8687' or higher.
- 21)LD pipe to 8033' (DV tool @ 7983').
- 22)Spot 35 sks Class H neat cmt (150' ±).
- 23)WOC 4 hrs & tag plug @ 7933' or higher.
  - a. If CBL indicates TOC on 7 5/8" csg above intermediate casing shoe @ 5192', proceed to step 24. If TOC is below casing shoe, need to set one more cement plug across TOC. If TOC is above intermediate casing shoe, need to set plug across TOC at whatever depth it is found.
- 24)POOH w/tbg
- 25)RIH w/WL & perforate @ 5242' (10 3/4" shoe @ 5192').
- 26)Attempt to squeeze formation under shoe to 500#.
- 27)RIH w/tbg to 5242' (10 3/4" csg shoe @ 5192' & top Delaware @ 5165').
- 28)Spot 40 sks Class C neat cmt (150' ±).
- 29)WOC 4 hrs & tag plug @ 5115' or higher.
- 30)POOH to 4045' (Top salt 3995' & intermediate string DV tool @ 3986').
- 31)Spot 35 sks Class C neat (175' ±).
- 32)WOC 4 hrs & tag plug @ 3936' or higher.
- 33)POOH to 1000' (max 3000' between plugs.
  - a. If this is above TOC, need to perforate & squeeze. If not, proceed.
- 34)Spot 35 sks Class C neat (175' ±).
- 35)WOC 4 hrs & tag.
- 36)POOH to 415' (Surface csg shoe @ 364').

## *Mexbourne Oil Company*

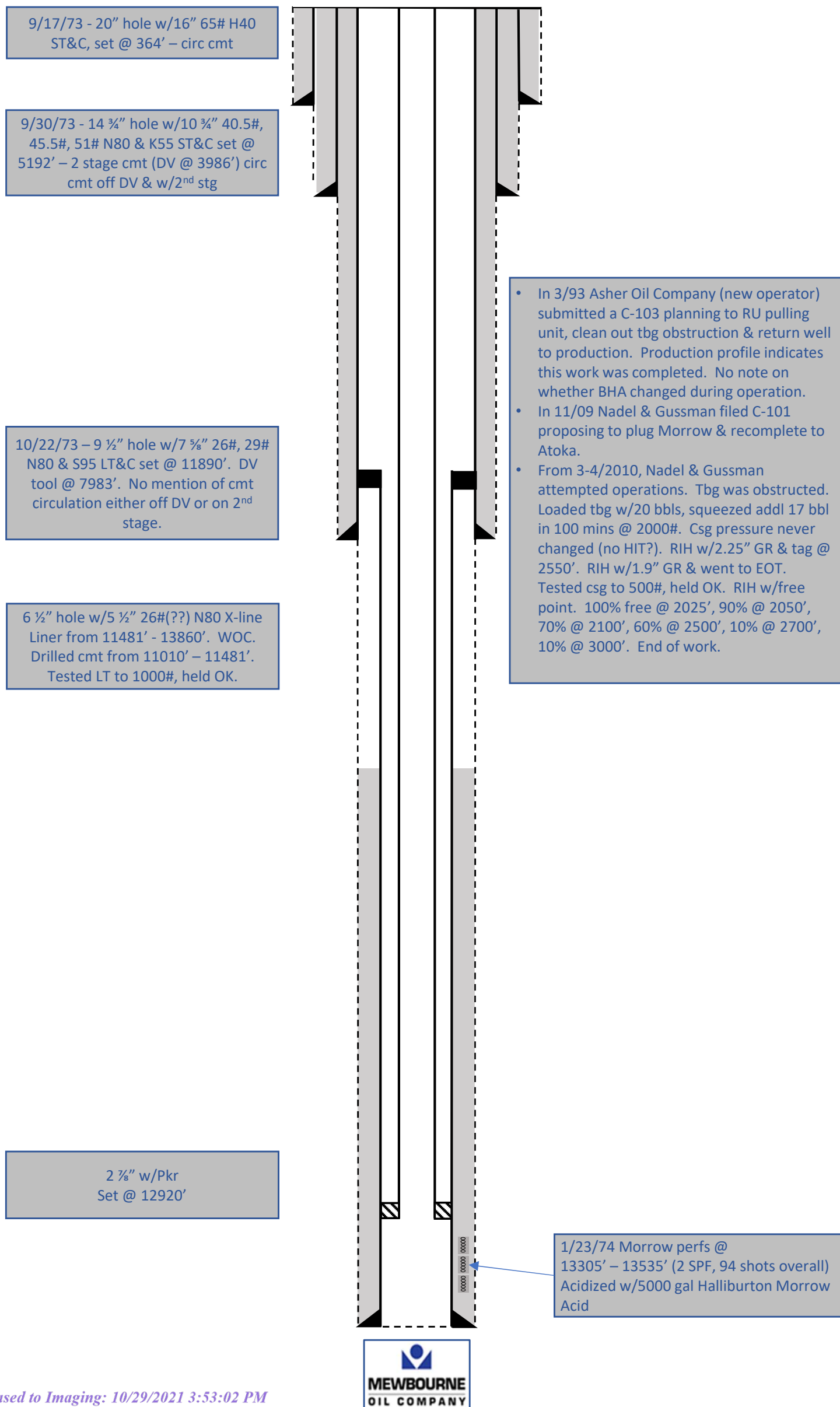
---

### **ABANDONMENT PROCEDURE**

- 37) Either perforate & squeeze or spot 35 sks Class C neat cmt depending on TOC.
- 38) WOC 4 hrs & tag @ 314' or higher.
- 39) Depending on CBL and TOC on production casing, either perforate @ 200' & circulate cmt up annulus to surface, or spot from 200' to surface through tbg.
- 40) Top fill & make sure hole remains full.
- 41) Cut off WH & install dry hole marker.

# State 35 #001 WBS

1750' FSL & 1980' FWL, Sec. 35 - T23S - R34E - Lea Co, NM  
API 30-025-24517



# State 35 #001 WBS

1750' FSL & 1980' FWL, Sec. 35 - T23S – R34E - Lea Co, NM  
API 30-025-24517

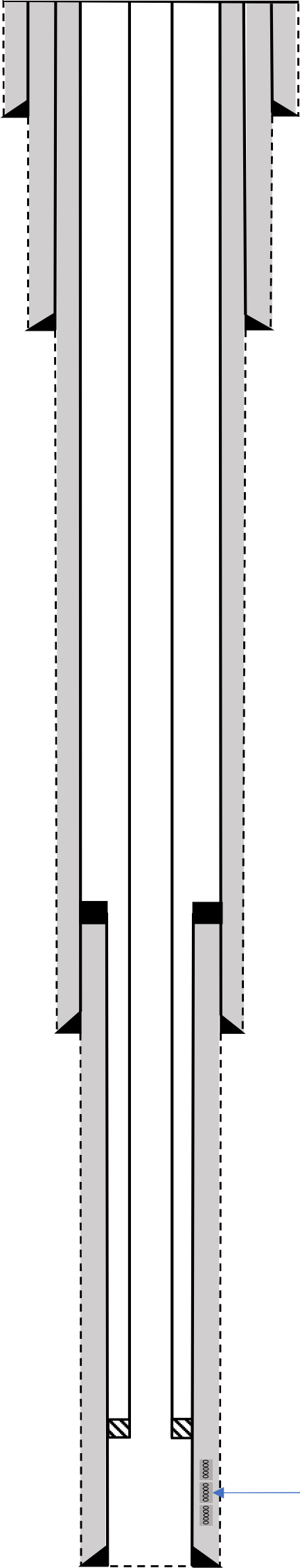
9/17/73 - 20" hole w/16" 65# H40 ST&C, set @ 364' – circ cmt

9/30/73 - 14 3/4" hole w/10 3/4" 40.5#, 45.5#, 51# N80 & K55 ST&C set @ 5192' – 2 stage cmt (DV @ 3986') circ cmt off DV & w/2<sup>nd</sup> stg

10/22/73 – 9 1/2" hole w/7 5/8" 26#, 29# N80 & S95 LT&C set @ 11890'. DV tool @ 7983'. No mention of cmt circulation either off DV or on 2<sup>nd</sup> stage.

6 1/2" hole w/5 1/2" 20# N80 X-line Liner from 11481' - 13860'. WOC. Drilled cmt from 11010' – 11481'. Tested LT to 1000#, held OK.

2 7/8" w/Pkr  
Set @ 12920'



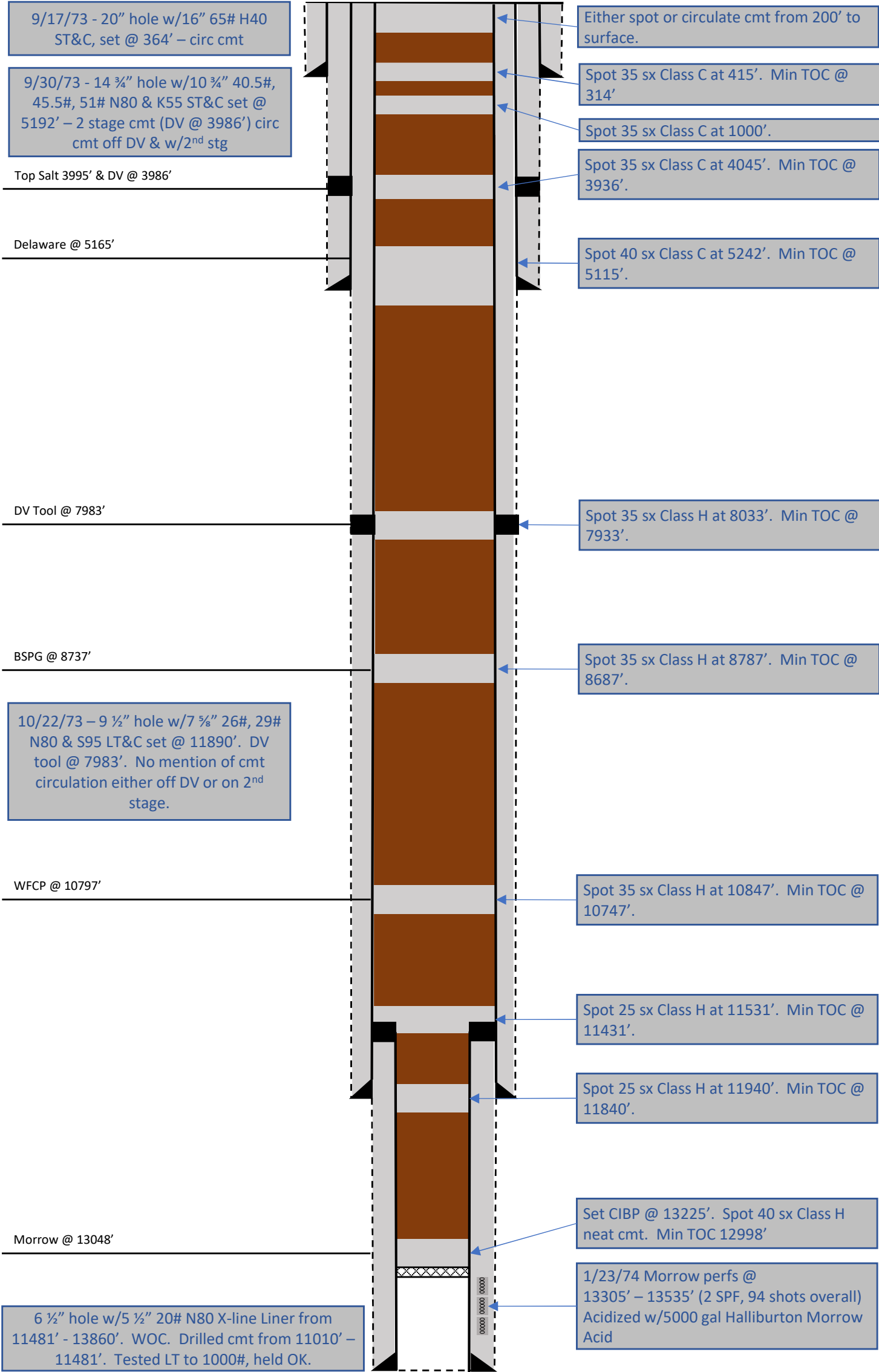
- In 3/93 Asher Oil Company (new operator) submitted a C-103 planning to RU pulling unit, clean out tbg obstruction & return well to production. Production profile indicates this work was completed. No note on whether BHA changed during operation.
- In 11/09 Nadel & Gussman filed C-101 proposing to plug Morrow & recomple to Atoka.
- From 3-4/2010, Nadel & Gussman attempted operations. Tbg was obstructed. Loaded tbg w/20 bbls, squeezed addl 17 bbl in 100 mins @ 2000#. Csg pressure never changed (no HIT?). RIH w/2.25" GR & tag @ 2550'. RIH w/1.9" GR & went to EOT. Tested csg to 500#, held OK. RIH w/free point. 100% free @ 2025', 90% @ 2050', 70% @ 2100', 60% @ 2500', 10% @ 2700', 10% @ 3000'. End of work.

1/23/74 Morrow perfs @ 13305' – 13535' (2 SPF, 94 shots overall) Acidized w/5000 gal Halliburton Morrow Acid



# State 35 #001 Final WBS

1750' FSL & 1980' FWL, Sec. 35 - T23S – R34E - Lea Co, NM  
API 30-025-24517



**District I**  
1625 N. French Dr., Hobbs, NM 88240  
Phone:(575) 393-6161 Fax:(575) 393-0720  
**District II**  
811 S. First St., Artesia, NM 88210  
Phone:(575) 748-1283 Fax:(575) 748-9720  
**District III**  
1000 Rio Brazos Rd., Aztec, NM 87410  
Phone:(505) 334-6178 Fax:(505) 334-6170  
**District IV**  
1220 S. St Francis Dr., Santa Fe, NM 87505  
Phone:(505) 476-3470 Fax:(505) 476-3462

**State of New Mexico**  
**Energy, Minerals and Natural Resources**  
**Oil Conservation Division**  
**1220 S. St Francis Dr.**  
**Santa Fe, NM 87505**

CONDITIONS  
  
Action 43171

CONDITIONS

Operator: MEWBOURNE OIL CO P.O. Box 5270 Hobbs, NM 88241	OGRID: 14744
	Action Number: 43171
	Action Type: [C-103] NOI Plug & Abandon (C-103F)

CONDITIONS

Created By	Condition	Condition Date
kfortner	See attached conditions of approval Note changes to procedure	10/28/2021