

Submit 1 Copy To Appropriate District
Office
District I – (575) 393-6161
1625 N. French Dr., Hobbs, NM 88240
District II – (575) 748-1283
811 S. First St., Artesia, NM 88210
District III – (505) 334-6178
1000 Rio Brazos Rd., Aztec, NM 87410
District IV – (505) 476-3460
1220 S. St. Francis Dr., Santa Fe, NM
87505

State of New Mexico
Energy, Minerals and Natural Resources

OIL CONSERVATION DIVISION
1220 South St. Francis Dr.
Santa Fe, NM 87505

Form C-103
Revised July 18, 2013

SUNDRY NOTICES AND REPORTS ON WELLS (DO NOT USE THIS FORM FOR PROPOSALS TO DRILL OR TO DEEPEN OR PLUG BACK TO A DIFFERENT RESERVOIR. USE "APPLICATION FOR PERMIT" (FORM C-101) FOR SUCH PROPOSALS.)		WELL API NO. 30-015-31905
1. Type of Well: Oil Well <input type="checkbox"/> Gas Well <input checked="" type="checkbox"/> Other Acid Gas Injection		5. Indicate Type of Lease STATE <input checked="" type="checkbox"/> FEE <input type="checkbox"/>
2. Name of Operator Lucid Energy Group		6. State Oil & Gas Lease No. VO-4917
3. Address of Operator 201 South 4 th Street, Artesia, NM 88210		7. Lease Name or Unit Agreement Name METROPOLIS AGI
4. Well Location Unit Letter <u>K</u> : 1650 feet from the <u>SOUTH</u> line and 1650 feet from the <u>WEST</u> line Section <u>36</u> Township <u>18S</u> Range <u>25E</u> NMPM <u>EDDY</u> County		8. Well Number #1
11. Elevation (Show whether DR, RKB, RT, GR, etc.) 3498 GR		9. OGRID Number 147831
		10. Pool name or Wildcat AGI - DEVONIAN

12. Check Appropriate Box to Indicate Nature of Notice, Report or Other Data

NOTICE OF INTENTION TO:

PERFORM REMEDIAL WORK ☐ PLUG AND ABANDON ☐
 TEMPORARILY ABANDON ☐ CHANGE PLANS ☐
 PULL OR ALTER CASING ☐ MULTIPLE COMPL ☐
 DOWNHOLE COMMINGLE ☐
 CLOSED-LOOP SYSTEM ☐
 OTHER: ☐

SUBSEQUENT REPORT OF:

REMEDIAL WORK ☐ ALTERING CASING ☐
 COMMENCE DRILLING OPNS. ☐ P AND A ☐
 CASING/CEMENT JOB ☐
 OTHER: MECHANICAL INTEGRITY TEST ☒

13. Describe proposed or completed operations. (Clearly state all pertinent details, and give pertinent dates, including estimated date of starting any proposed work). SEE RULE 19.15.7.14 NMAC. For Multiple Completions: Attach wellbore diagram of proposed completion or recompletion.

The MIT was conducted after providing notice to NMOCD on Saturday, July 24, 2021 at 8:00 a.m (MT). The following is a step-by-step summary of the MIT:

1. The annular pressure was 200 psig at the casing valve prior to the start of the MIT.
2. The annulus was opened to the Pressure Services "kill" truck and pressure was bled off to 0 psig.
3. The chart recorder was installed and the kill truck slowly pressured the annulus to 600 psig.
4. The chart recorder had a malfunction and pressure was bled back down to 0 psig.
5. The kill truck slowly pressured back up to 600 psig and the test began at 8:49 a.m.
6. The chart recorded the annular pressure for 36 minutes.
7. At 9:19 a.m the pressure remained at 600 psig.
8. At 9:25 a.m. the pressure was bled off to 200 psig and left on the annulus. The annular valves were shut and the kill truck disconnected from the well.

Please see the attached MIT pressure chart and calibration information.

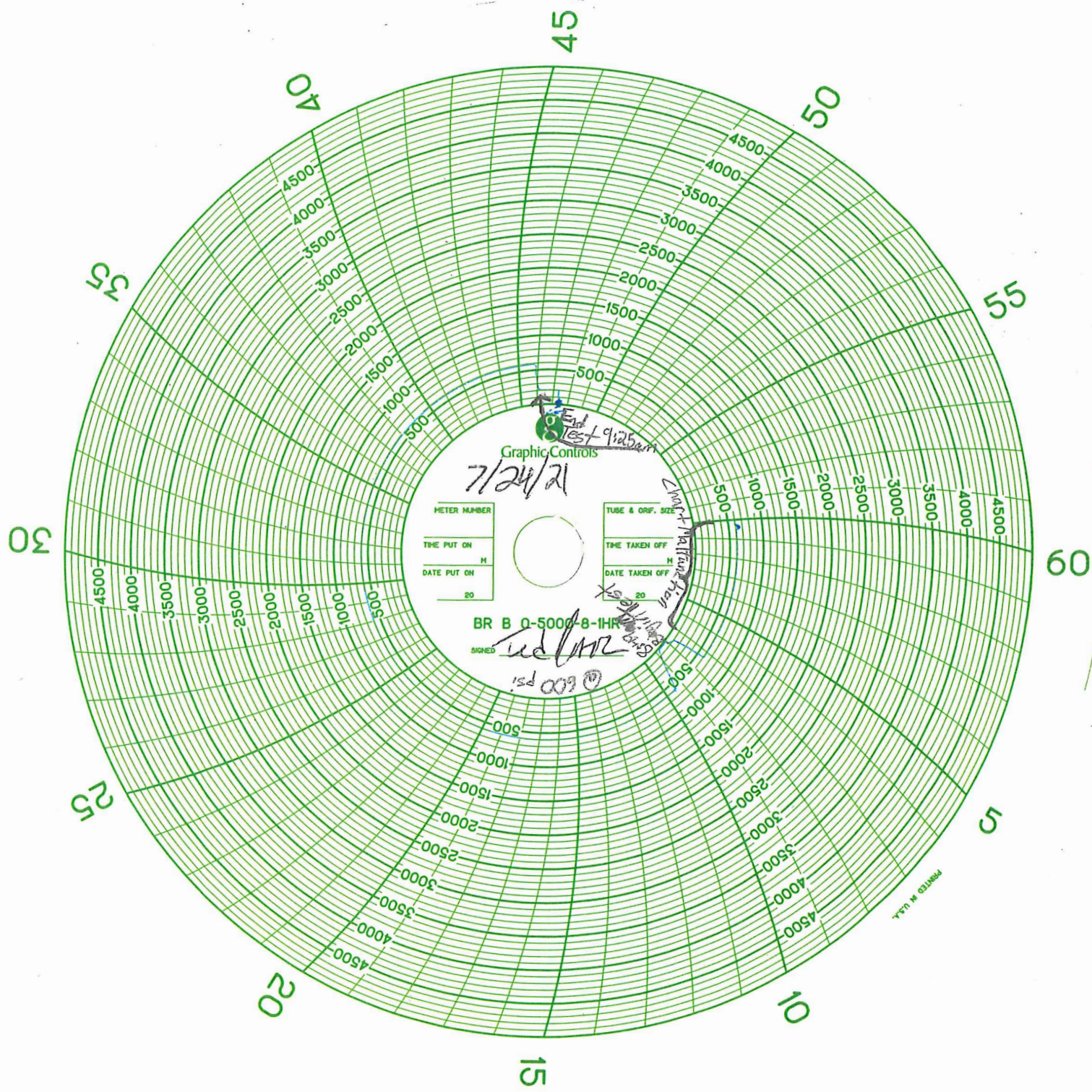
I hereby certify that the information above is true and complete to the best of my knowledge and belief.

SIGNATURE Kim Hamlet TITLE EHSR Specialist DATE 07-28-2021

Type or print name Kim Hamlet E-mail address: khamlet@lucid-energy.com PHONE: 575-810-6055

For State Use Only

APPROVED BY: _____ TITLE _____ DATE _____
 Conditions of Approval (if any): _____



Lucid Energy Group
Metropolis #1 API 30-015-31905
1650 FSL 1650 FWL
Unit K, Sec. 36, T18S, R25E
Pressure Service Driver Ted Paiz
1 hour clock Cert #: U1C041206_61821

Pressure Recorder Calibration Certificate

Company Name:	Pressure Services	Certificate #:	U1C041206_61821
Recorder Type:	American	Serial #:	U1C041206
Pressure Range 1:	1000	Accuracy:	+/- 0.2% PSIG
Pressure Range 2:	NA	Accuracy:	+/- 0.2% PSIG
Temperature Range:	NA	Accuracy:	NA

Pressure Range				Temperature Test (F°)			
Increasing Pressure (PSIG)		Decreasing Pressure (PSIG)		Applied Temperature		Indicated Temperature	
Applied Pressure	Indicated Pressure	Error %	Applied Pressure	Indicated Pressure	Error %	Applied Temperature	Error %
0	0	0	800	800	0	0	0
100	100	0	600	600	0	0	0
300	300	0	400	400	0	0	0
500	500	0	200	200	0	0	0
700	700	0	50	50	0	0	0
1000	1000	0	0	0	0	0	0

Increasing Pressure (PSIG)			Decreasing Pressure (PSIG)		
Applied Pressure	Indicated Pressure	Error %	Applied Pressure	Indicated Pressure	Error %
0	0	0	0	0	0
0	0	0	0	0	0
0	0	0	0	0	0
0	0	0	0	0	0
0	0	0	0	0	0
0	0	0	0	0	0

This is to certify that this

This is to certify that this instrument has been inspected and calibrated using a certified 10,000 psi Crystal Gauge.

Calibrated By: Chris Villeneuve
Signature: 
Date: 6-18-2021

District I

1625 N. French Dr., Hobbs, NM 88240
Phone:(575) 393-6161 Fax:(575) 393-0720

District II

811 S. First St., Artesia, NM 88210
Phone:(575) 748-1283 Fax:(575) 748-9720

District III

1000 Rio Brazos Rd., Aztec, NM 87410
Phone:(505) 334-6178 Fax:(505) 334-6170

District IV

1220 S. St Francis Dr., Santa Fe, NM 87505
Phone:(505) 476-3470 Fax:(505) 476-3462

State of New Mexico
Energy, Minerals and Natural Resources
Oil Conservation Division
1220 S. St Francis Dr.
Santa Fe, NM 87505

CONDITIONS

Action 38444

CONDITIONS

Operator: Lucid Artesia Company 201 S. Fourth Street Artesia, NM 88210	OGRID: 147831
	Action Number: 38444
	Action Type: [C-103] Sub. General Sundry (C-103Z)

CONDITIONS

Created By	Condition	Condition Date
bpowell	Ensure future charts are in compliance with the pressure requirements. They should be ran with a recorder and chart which comply with 1000# max chart and no greater than a 2 hr clock.	11/10/2021