

Well Name: JICARILLA 159	Well Location: T23N / R2W / SEC 18 / SWSE /	County or Parish/State: RIO ARRIBA / NM
Well Number: 1	Type of Well: CONVENTIONAL GAS WELL	Allottee or Tribe Name: JICARILLA APACHE
Lease Number: JIC159	Unit or CA Name:	Unit or CA Number:
US Well Number: 3003905054	Well Status: Producing Gas Well	Operator: DJR OPERATING LLC

Subsequent Report

Sundry ID: 2631341

Type of Submission: Subsequent Report Type of Action: Plug and Abandonment

Date Sundry Submitted: 08/30/2021 Time Sundry Submitted: 10:54

Date Operation Actually Began: 08/19/2021

Actual Procedure: The subject well was Plugged & Abandoned on 08/19/2021 per the attached detailed As Plugged Wellbore Diagram and Marker.

SR Attachments

- Actual Procedure
- PxA_Marker_Jicarilla_159__1_20210830105449.pdf
 - EOW_Report_Jicarilla_159_1_20210830105449.pdf

Well Name: JICARILLA 159	Well Location: T23N / R2W / SEC 18 / SWSE /	County or Parish/State: RIO ARRIBA / NM
Well Number: 1	Type of Well: CONVENTIONAL GAS WELL	Allottee or Tribe Name: JICARILLA APACHE
Lease Number: JIC159	Unit or CA Name:	Unit or CA Number:
US Well Number: 3003905054	Well Status: Producing Gas Well	Operator: DJR OPERATING LLC

Operator Certification

I certify that the foregoing is true and correct. Title 18 U.S.C. Section 1001 and Title 43 U.S.C. Section 1212, make it a crime for any person knowingly and willfully to make to any department or agency of the United States any false, fictitious or fraudulent statements or representations as to any matter within its jurisdiction. Electronic submission of Sundry Notices through this system satisfies regulations requiring a submission of Form 3160-5 or a Sundry Notice.

Operator Electronic Signature: SHAW-MARIE FORD	Signed on: AUG 30, 2021 10:54 AM
Name: DJR OPERATING LLC	
Title: Regulatory Specialist	
Street Address: 1 Road 3263	
City: Aztec	State: NM
Phone: (505) 632-3476	
Email address: sford@djrlc.com	

Field Representative

Representative Name:		
Street Address:		
City:	State:	Zip:
Phone:		
Email address:		

BLM Point of Contact

BLM POC Name: KENNETH G RENNICK	BLM POC Title: Petroleum Engineer
BLM POC Phone: 5055647742	BLM POC Email Address: krennick@blm.gov
Disposition: Accepted	Disposition Date: 10/20/2021
Signature: Kenneth Rennick	



United States Department of the Interior

BUREAU OF INDIAN AFFAIRS

Jicarilla Agency

P.O. Box 167

Dulce, New Mexico 87528

IN REPLY REFER TO:

Branch of Real Estate Services

November 15, 2019

Memorandum

To: Robert Switzer, Environmental Protection Specialist
Bureau of Land Management, Farmington Field Office

From: Kurt Sandoval, Realty Officer
Bureau of Indian Affairs, Jicarilla Agency

Subject: BIA Concurrence concerning Well Pad Monument Makers

Let this serve as concurrence for the agreed upon preferred method to be used when constructing well pad monument markers on Jicarilla Apache Tribal Lands. We will eliminate the 6 ft. dry hole marker and use a permanent metal plate that will be installed at ground level, effective September 2019. The marker will contain the following information:

- Well Pad Lease Number
- Well Pad Location Name and Number
- Well Pad Legal Description, specifically Section, Township and Range
- Well Pad API Number
- Well Pad Plug Date
- Well Pad Operator Name

You may contact our office if you have any questions or concerns at (575) 759-3936. Thank you.


Realty Officer

cc: Jicarilla Oil and Gas Administration

P&A Marker
DJR Operating, LLC
Jicarilla 159 1
API: 30-039-05054
SWSE O-18-23N-2W
Rio Arriba County, NM



P&A End of Well Report
DJR Operating, LLC
Jicarilla 159 #001
API: 30-039-05054
SWSE O-19-23N-02W

Spud Date: 07/01/1955

Plugged Date: 08/19/2021

8-16-2021:

Plug 1: Pictured Cliffs perms: Spot balanced plug of 40 sx Class G + 2% CaCl₂ from 3037'. WOC. Tagged plug at 2930'. Run CBL log from 2930' to surface. TOC 500'.

8-17-2021:

Plug 2: Pictured Cliffs, Fruitland, Kirtland and Ojo Alamo. Balanced plug of 170 sx + 2% CaCl₂ from 2915'. Tagged at 2504'.

Plugs 3 & 4: Nacimiento: Spot balanced plug of 60 sx from 1756' to cover top of Nacimiento. WOC. Tripped in, did not tag. Reversed out cement and cement water. Mixed and pumped 70 sx cement replacement plug. WOC ON, tagged at 1588'. TOC 500' CBL

8-18-2021:

Plug 5: Perf 3 holes at 460'. TIH with tbg to 570'. Mix and pump 201 sx to bring cement to surface inside 9-5/8" casing. TOOH, start cement bullhead. Immediate flow out BH, possible WH leak. Excavated around WH, found TRUE BH 5' lower down. TIH reversed out cement, leaving plug from 570' to 455'.

8-19-2021:

Tagged Plug 5 at 455'. PT 9 5/8" csg, good test. Perf 3 holes at 432', no circ, shoot at 422', no circ, shoot at 350'. Good circulation out BH. TIH to 447', mix and pump Plug 6 with 30 sx cement to cover previous holes. TOOH, mix and pump Plug 7 with 252 sx down csg and out BH.
Top off cellar with 42 sx.

All cement used: Class G cement mixed at 15.8 ppg. 1.15 yield.

BLM Representative onsite to witness: Casey Arnett

End of Well Report
DJR Operating, LLC
Jicarilla 159 1
 API # 30-039-05054
 SW/SE, Unit O, Sec 18, T23N, R2W
 Rio Arriba County, NM

GL 7303'
 KB 7316'
 Spud Date 7/1/1955

SURF CSG

Hole size 17.5"
 Csg Size: 13.375"
 Wt: 48#
 Grade: H-40
 ID: 12.715"
 Depth 510'
 Csg cap ft³: 0.8817
 TOC: Surf

FORMATION TOPS

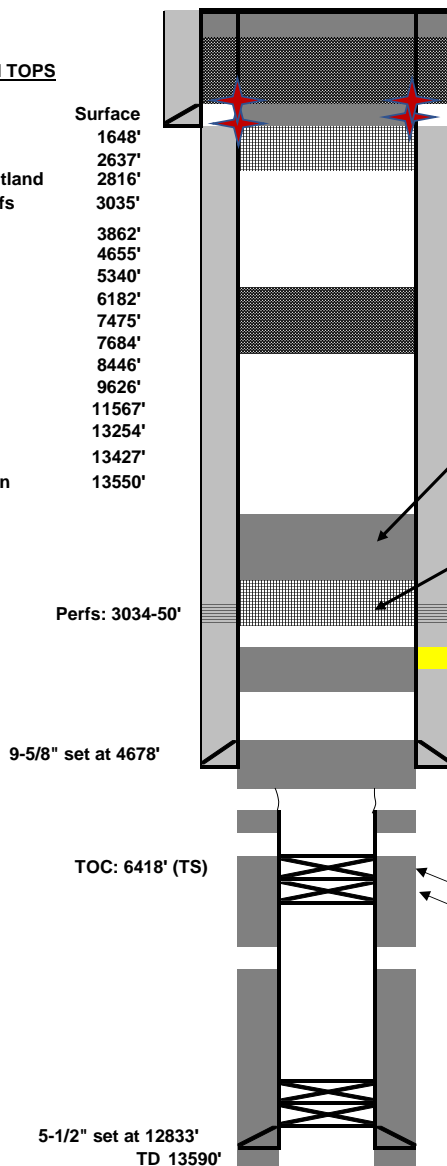
San Jose	Surface
Nacimiento	1648'
Ojo Alamo	2637'
Kirtland-Fruitland	2816'
Pictured Cliffs	3035'
Chacra	3862'
Mesa Verde	4655'
Mancos	5340'
Gallup	6182'
Dakota	7475'
Morrison	7684'
Entrada	8446'
Cutler	9626'
Hermosa	11567'
Molas	13254'
Leadville	13427'
Pre-Cambrian	13550'

INT CSG

Hole size 12.25"
 Csg Size: 9.625"
 Wt: 36/40#
 Grade: J-55
 ID: 8.921"
 Depth 4678'
 Csg cap ft³: 0.434
 Csg/Csg Ann ft³: 0.3132
 TOC: 880' TS

PROD CSG

Hole size 7.875"
 Csg Size: 5.5"
 Wt: 17/20#
 Grade: J-55
 ID: 4.882"
 Depth 12,833'
 Csg cap ft³: 0.1336
 Csg/Csg Ann ft³: 0.1926
 Csg/OH cap ft³: 0.1733
 TOC: Stg 1 Circ cmt to surf
 TOC: Stg 2 (Calc) Circ cmt to surf



8-19-2021: Top off cellar with 42 sx.

8-19-2021: Tagged Plug 5 at 455'. PT 9 5/8" csg, good test. Perf 3 holes at 432', no circ, shoot at 422', no circ, shoot at 350'. Good circulation out BH. TIH to 447', mix and pump Plug 6 with 30 sx cement to cover previous holes. TOOH, mix and pump Plug 7 with 252 sx down csg and out BH.

8-18-2021: Plug 5: Perf 3 holes at 460'. TIH with tbq to 570'. Mix and pump 201 sx to bring cement to surface inside 9-5/8" casing. TOOH, start cement bullhead. Immediate flow out BH, possible WH leak. Excavated around WH, found TRUE BH 5' lower down. TIH reversed out cement, leaving plug ffrom 570' to 455'.

8-16-2021: TOC 500' CBL

8-17-2021: Plugs 3 & 4: Nacimiento: Spot balanced plug of 60 sx from 1756' to cover top of Nacimiento. WOC. Tripped in, did not tag. Reversed out cement and cement water. Mixed and pumped 70 sx cement replacement plug. WOC ON, tagged at 1588'.

8-17-2021: Plug 2: Pictured Cliffs, Fruitland, Kirtland and Ojo Alamo. Balanced plug of 170 sx + 2% CaCl2 from 2915'. Tagged at 2504'.

8-16-2021: Run CBL log from 2930' to surface. TOC 500'.

8-16-2021: Plug 1: Pictured Cliffs perms: Spot balanced plug of 40 sx Class G + 2% CaCl2 from 3037'. WOC. Tagged plug at 2930'.

Everything below this line was done previous to P&A

TOC: 3087' (PBTD)

Recemented 5-1/2" casing through 4 squeeze holes at 7450-51' perms. TOC 6418'. 12/28/55: Cut 5-1/2" casing at 4906' and pulled out. 12/28/55: "Plug back to 3087" according to New Mexico Oil Conservation Commission Rules and Regulations."

CR 7350' Sqz'd with 150 sx.
 CR 7420' Sqz'd with 435 sx

TOC: 10700' (TS)

CR 12470' Sqz'd with 100 sx.
 CR 12713' Sqz'd with 200 sx.

All cement pumped was Class G mixed at 15.8 ppg, yield 1.15
 Regulatory Representative: Casey Arnet, BLM
 GPS Coordinates: Lat: 36.21911534573883, Lng: -107.08732165396214

District I
1625 N. French Dr., Hobbs, NM 88240
Phone:(575) 393-6161 Fax:(575) 393-0720
District II
811 S. First St., Artesia, NM 88210
Phone:(575) 748-1283 Fax:(575) 748-9720
District III
1000 Rio Brazos Rd., Aztec, NM 87410
Phone:(505) 334-6178 Fax:(505) 334-6170
District IV
1220 S. St Francis Dr., Santa Fe, NM 87505
Phone:(505) 476-3470 Fax:(505) 476-3462

State of New Mexico
Energy, Minerals and Natural Resources
Oil Conservation Division
1220 S. St Francis Dr.
Santa Fe, NM 87505

CONDITIONS

Action 58386

CONDITIONS

Operator: DJR OPERATING, LLC 1 Road 3263 Aztec, NM 87410	OGRID: 371838
	Action Number: 58386
	Action Type: [C-103] Sub. Plugging (C-103P)

CONDITIONS

Created By	Condition	Condition Date
mkuehling	None	11/15/2021