

Well Name: CENTRAL BISTI UNIT	Well Location: T25N / R12W / SEC 5 / SEnw / 36.431915 / 108.135849	County or Parish/State: SAN JUAN / NM
Well Number: 79	Type of Well: OIL WELL	Allottee or Tribe Name:
Lease Number: NMSF078056	Unit or CA Name: CENTRAL BISTI UNIT	Unit or CA Number: NMNM78386X
US Well Number: 3004525342	Well Status: Producing Oil Well	Operator: DJR OPERATING LLC

Subsequent Report

Type of Submission: Subsequent Report

Type of Action: Plug and Abandonment

Date Sundry Submitted: 02/10/2021

Time Sundry Submitted: 11:49

Date Operation Actually Began: 10/05/2020

Actual Procedure: The subject well was plugged and abandoned on 10/5/20 per the attached detailed as plugged WBD and marker.

SR Attachments

- Actual Procedure
- Coordinates_and_Marker_20210210114932.pdf
 - EOWR_AsPlugged_WBD_20210210114932.pdf

Well Name: CENTRAL BISTI UNIT	Well Location: T25N / R12W / SEC 5 / SEnw / 36.431915 / 108.135849	County or Parish/State: SAN JUAN / NM
Well Number: 79	Type of Well: OIL WELL	Allottee or Tribe Name:
Lease Number: NMSF078056	Unit or CA Name: CENTRAL BISTI UNIT	Unit or CA Number: NMNM78386X
US Well Number: 3004525342	Well Status: Producing Oil Well	Operator: DJR OPERATING LLC

Operator Certification

I certify that the foregoing is true and correct. Title 18 U.S.C. Section 1001 and Title 43 U.S.C. Section 1212, make it a crime for any person knowingly and willfully to make to any department or agency of the United States any false, fictitious or fraudulent statements or representations as to any matter within its jurisdiction. Electronic submission of Sundry Notices through this system satisfies regulations requiring a submission of Form 3160-5 or a Sundry Notice.

Operator Electronic Signature: FORD	Signed on: FEB 10, 2021 11:49 AM
Name: DJR OPERATING LLC	
Title: Regulatory Specialist	
Street Address: 1 Road 3263	
City: Aztec	State: NM
Phone: (505) 632-3476	
Email address: sford@djrlc.com	

Field Representative

Representative Name:		
Street Address:		
City:	State:	Zip:
Phone:		
Email address:		

BLM Point of Contact

BLM POC Name: ABDELGADIR ELMADANI	BLM POC Title: Petroleum Engineer
BLM POC Phone: 5055647742	BLM POC Email Address: aelmadani@blm.gov
Disposition: Accepted	Disposition Date: 03/31/2021
Signature: AG Elmadani	

DJR Operating, LLC
Central Bisti Unit #079
30-045-25342
SENW F-05-25N-12W
San Juan County, NM

326° NW

36°25'55" N 108°8'12" W

Bloomfield, NM

6150 ft Elevation



P&A End of Well Report
DJR Operating, LLC
Central Bisti Unit #079
API: 30-045-25342
SENW F-05-25N-12W

Spud Date: 05/13/1982

Plugged Date: 10/05/2020

9-29-2020:

Plug 1: Gallup: Mix and pump balanced plug of 30 sx class G +2% CaCl₂ from 4868'. WOC, tag plug 1 at 4810'.

9-30-2020:

Plug 2: Gallup: Mix and pump balanced plug of 35 sx class G +2% CaCl₂ from 4810'. WOC. Tagged plug at 4264'. Pressure test 3 1/2" csg to 620 psi, good test. Run CBL log from 4264' to surface. BLM & OCD agreed TOC outside 4 1/2" csg is OK for Mancos and MV inside balanced plugs.

Plug 3: Mancos: Pump balanced plug of 7 sx class G cement from 3800' to 3650'.

Plug 4: Mesa Verde: Pump balanced plug of Class G cement from 1900' to 1750'.

10-01-2020:

Plug 5: Chacra: Perforate holes at 1524'. Establish injection, no flow up 4 1/2" csg or BH. Set CR at 1490'. Pump 46 sx class G cement down 3 1/2" csg, (41sx under CR, 5 sx above CR. After 7 bbls, got old drilling mud circ out BH.

Plug 6: Pictured Cliffs, Fruitland: Perforate holes at 1120'. Establish injection, no flow up 4 1/2" csg, slight flow at BH. Set CR at 1063'. Pump 116 sx class G cement down 3 1/2" csg. (103 sx under CR, 13 sx above CR. Drilling mud circ out BH.

10-02 thru 10-05-2020:

Plugs 7, 8 & 9: Kirtland: Perforate holes at 530', could not circulate to BH. TIH to 605', spot 9 sx balanced plug of class G + 2% CaCl₂. WOC while holding 300 psi, tag plug at 534'. With tbg at 534', spot 9 sx balanced plug of class G + 2% CaCl₂. WOC, tag plug at 500'. With tbg at 500', spot 6 sx balanced plug of class G cement. Tag plug at 353'.

Plug 10: Perforate at 266'. Could not circulate out BH. TIH to 353', spot 25 sx balanced plug of class G +2% CaCl₂ to surface. WOC, holding 500 psi, tag plug at 60'.

Plug 11: Cut off WH, 4 1/2" x 8 5/8" annulus filled with dry drilling mud and cement mix. Cleaned out with poly pipe and vac truck, could not get deeper than 12'. Install P&A marker. Pump 25 sx class G cement to fill 3 1/2" csg from 60', 4 1/2 x 8 5/8" annulus from 12' and cellar.

All cement used: Class G cement mixed at 15.8 ppg. 1.15 yield.

BLM Representative onsite to witness: Darrell Priddy

NMOCD Representative by phone: Brandon Powell

End of Well Report

DJR Operating, LLC

Central Bisti Unit 79

API # 30-045-25342
SE/NW, Unit F, Sec 5, T25N, R12W
San Juan County, NM

SURF CSG

Hole size 12.25"
Csg Size: 8.625"
Wt: 24#
Grade: K-55
ID: 8.097"
Depth 216'
Csg cap ft3: 0.3575
TOC: Circ cmt
to surface

FORMATION TOPS

Nacimiento	Surface
Ojo Alamo	N/A
Kirtland	480'
Fruitland	865'
Pictured Cliffs	1070'
Chacra	1425'
Mesa Verde	1850'
Mancos	3750'
Gallup	4630'

PROD CSG

Hole size 7.875"
Csg Size: 4.5"
Wt: 10.5#
Grade: K-55
ID: 4.052"
Depth 5057'
Csg cap ft3: 0.0895
Csg/Csg Ann ft3: 0.2471
Csg/OH cap ft3: 0.2278
TOC: 3220'

Primary cmt volume 838 ft3

3.5" FJ in 4.5" 10.5#	4530'
ID.	2.992"
Csg cap ft3:	0.04883

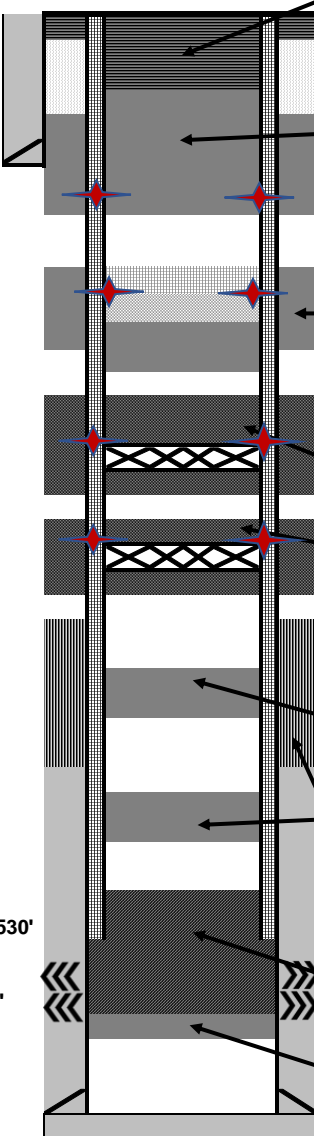
Original TOC calc at 3220'

3-1/2" J-55 FJ liner set at 4530'
cemented to surface

Perfs 4868-4784'

PBTD 5010'
TD 5060'

GL 6155'
KB 6168'
Spud Date 5/13/1982



10-05-2020: Plug 11: Cut off WH, 4 1/2" x 8 5/8" annulus filled with dry drilling mud and cement mix. Cleaned out with poly pipe and vac truck, could not get deeper than 12'. Install P&A marker. Pump 25 sx class G cement to fill 3 1/2" csg from 60', 4 1/2 x 8 5/8" annulus from 12' and cellar.

10-05-2020: Plug 10: Perforate at 266'. Could not circulate out BH. TIH to 353', spot 25 sx balanced plug of class G +2% CaCl2 to surface. WOC, holding 500 psi, tag plug at 60'.

10-01 thru 10-05-2020: Plugs 7, 8 & 9: Kirtland: Perforate holes at 530', could not circulate to BH. TIH to 605', spot 9 sx balanced plug of class G + 2% CaCl2. WOC while holding 300 psi, tag plug at 534'. With tbg at 534', spot 9 sx balanced plug of class G + 2% CaCl2. WOC, tag plug at 500'. With tbg at 500', spot 6 sx balanced plug of class G cement. Tag plug at 353'.

10-01-2020: Plug 6: Pictured Cliffs, Fruitland: Perforate holes at 1120'. Establish injection, no flow up 4 1/2" csg, slight flow at BH. Set CR at 1063'. Pump 116 sx class G cement down 3 1/2" csg. (103 sx under CR, 13 sx above CR. Drilling mud circ out BH.

10-01-2020: Plug 5: Chacra: Perforate holes at 1524'. Establish injection, no flow up 4 1/2" csg or BH. Set CR at 1490'. Pump 46 sx class G cement down 3 1/2" csg, (41sx under CR, 5 sx above CR. After 7 bbls, got old drilling mud circ out BH.

9-30-2020: Plug 4: Mesa Verde: Pump balanced plug of Class G cement from 1900' to 1750'.

9-30-2020: Plug 3: Mancos: Pump balanced plug of 7 sx class G cement from 3800' to 3650'.

9-30-2020: Pressure test 3 1/2" csg to 620 psi, good test. Run CBL log from 4264' to surface. BLM & OCD agreed TOC outside 4 1/2" csg is OK for Mancos and MV inside balanced plugs.

9-30-2020: Plug 2: Gallup: Mix and pump balanced plug of 35 sx class G +2% CaCl2 from 4810'. WOC. Tagged plug at 4264'.

9-29-2020: Plug 1: Gallup: Mix and pump balanced plug of 30 sx class G +2% CaCl2 from 4868'. WOC, tag plug 1 at 4810'.

Cement used, class G mixed at 15.8 ppg, yield 1.15.

Changes to procedure were all agreed upon by; Darrell Priddy, BLM on site and Brandon Powell, NMOCD by phone.

District I
1625 N. French Dr., Hobbs, NM 88240
Phone:(575) 393-6161 Fax:(575) 393-0720

District II
811 S. First St., Artesia, NM 88210
Phone:(575) 748-1283 Fax:(575) 748-9720

District III
1000 Rio Brazos Rd., Aztec, NM 87410
Phone:(505) 334-6178 Fax:(505) 334-6170

District IV
1220 S. St Francis Dr., Santa Fe, NM 87505
Phone:(505) 476-3470 Fax:(505) 476-3462

State of New Mexico
Energy, Minerals and Natural Resources
Oil Conservation Division
1220 S. St Francis Dr.
Santa Fe, NM 87505

CONDITIONS

Action 57941

CONDITIONS

Operator: DJR OPERATING, LLC 1 Road 3263 Aztec, NM 87410	OGRID: 371838
	Action Number: 57941
	Action Type: [C-103] Sub. Plugging (C-103P)

CONDITIONS

Created By	Condition	Condition Date
mkuehling	None	11/15/2021