

Well Name: UNCLE CHES 2116 FED COM	Well Location: T20S / R35E / SEC 21 / SESW / 32.5521085 / -103.4650448	County or Parish/State: LEA / NM
Well Number: 125Y	Type of Well: OIL WELL	Allottee or Tribe Name:
Lease Number: NMNM132079	Unit or CA Name:	Unit or CA Number:
US Well Number: 300254733800X1	Well Status: Temporarily Abandoned	Operator: MATADOR PRODUCTION COMPANY

Notice of Intent

Sundry ID: 2646233

Type of Submission: Notice of Intent	Type of Action: Plug and Abandonment
Date Sundry Submitted: 11/30/2021	Time Sundry Submitted: 02:08
Date proposed operation will begin: 12/06/2021	

Procedure Description: BLM Bond No. NMB001079 Surety Bond No. RLB0015172 As previously discussed with the Division, during normal drilling operations on this well we became stuck and ultimately drilled a replacement well. After unsuccessful fishing operations on this well, we plan to plug and abandon this original uncompleted wellbore, as follows: 1. Arrive on location, hold PJSM, MIRU WSU, NU BOPs. 2. Set cast iron cement retainer (CICR) @ 1,930' inside of 9-5/8" 40# J-55 BTC casing. 3. Pump 4,222 sacks of 14.8 ppg Class C cement through CICR or until cement bridges off and no additional volume is able to be pumped. 4. Circulate and displace hole above CICR with mud laden fluid (MLF) at 25sx/100 bbls concentration. 5. Spot 100' Class C cement above CICR @ 1830' (TOC). WOC and tag. 6. Set cast iron bridge plug (CIBP) @ 1,700'. 7. Spot 100' Class C cement @ 0' (TOC). 8. Cut off wellhead. 9. Install above ground marker per NMOCD requirements.

Surface Disturbance

Is any additional surface disturbance proposed?: No

NOI Attachments

Procedure Description

Current_Wellbore_Schematic_20211201____Uncle_Ches_2116_Fed_Com_125Y_20211201153115.pdf

PA_Wellbore_Schematic____Uncle_Ches_2116_Fed_Com_125Y_20211201122500.pdf

Accepted for Record Only

SUBJECT TO LIKE
APPROVAL BY BLM

K 7

NMOCD 12/2/21

Received by OCD: 12/2/2021 10:11:43 AM

Page 2 of 18

Well Name: UNCLE CHES 2116 FED COM	Well Location: T20S / R35E / SEC 21 / SESW / 32.5521085 / -103.4650448	County or Parish/State: LEA / NM
Well Number: 125Y	Type of Well: OIL WELL	Allottee or Tribe Name:
Lease Number: NMNM132079	Unit or CA Name:	Unit or CA Number:
US Well Number: 300254733800X1	Well Status: Temporarily Abandoned	Operator: MATADOR PRODUCTION COMPANY

Conditions of Approval

Specialist Review

Uncle_Ches_2116_Fed_Com_125Y_Sundry_ID_2646233_P_A_20211202065449.pdf

Operator Certification

I certify that the foregoing is true and correct. Title 18 U.S.C. Section 1001 and Title 43 U.S.C. Section 1212, make it a crime for any person knowingly and willfully to make to any department or agency of the United States any false, fictitious or fraudulent statements or representations as to any matter within its jurisdiction. Electronic submission of Sundry Notices through this system satisfies regulations requiring a submission of Form 3160-5 or a Sundry Notice.

Operator Electronic Signature: NICKY FITZGERALD	Signed on: DEC 01, 2021 03:57 PM
Name: MATADOR PRODUCTION COMPANY	
Title: Regulatory	
Street Address: 5400 LBJ FREEWAY STE 1500	
City: DALLAS	State: TX
Phone: (972) 371-5448	
Email address: nicky.fitzgerald@matadorresources.com	

Field Representative

Representative Name:		
Street Address:		
City:	State:	Zip:
Phone:		
Email address:		

BLM Point of Contact

BLM POC Name: LONG VO	BLM POC Title: Petroleum Engineer
BLM POC Phone: 5752345972	BLM POC Email Address: LVO@BLM.GOV
Disposition: Approved	Disposition Date: 12/02/2021
Signature: Long Vo	

PLUG AND ABANDONMENT CONDITIONS OF APPROVAL

OPERATOR'S NAME:	Matador Production Company
LEASE NO.:	NMNM132079
WELL NAME & NO.:	Uncle Ches 2116 Fed Com 125Y
US Well Number:	3002547338
LOCATION:	Section 21, T.20 S., R.35 E., NMPM
COUNTY:	Lea County, New Mexico

BLM Bond No. NMB001079

Surety Bond No. RLB0015172

As previously discussed with the Division, during normal drilling operations on this well we became stuck and ultimately drilled a replacement well. After unsuccessful fishing operations on this well, we plan to plug and abandon this original uncompleted wellbore, as follows:

1. Arrive on location, hold PJSM, MIRU WSU, NU BOPs.
2. Set cast iron cement retainer (CICR) @ ~~1,930'~~^{2420'} inside of 9-5/8" 40# J-55 BTC casing.
3. Pump 4,222 sacks of 14.8 ppg Class C cement through CICR or until cement bridges off and no additional volume is able to be pumped.
4. Circulate and displace hole above CICR with mud laden fluid (MLF) at 25sx/100 bbls concentration.
5. Spot ~~100'~~^{195 SX} Class C cement above CICR @ 1830' (TOC). WOC and tag. (2420' to 1830')
6. Set cast iron bridge plug (CIBP) @ 1,700'. Leak test CIBP Spot 25 SX
7. Spot 100' Class C cement @ 0' (TOC). 35 SX
8. Cut off wellhead.
9. Install above ground marker per NMOCD requirements.

**Approval Subject to General Requirements and Special
Stipulations Attached**

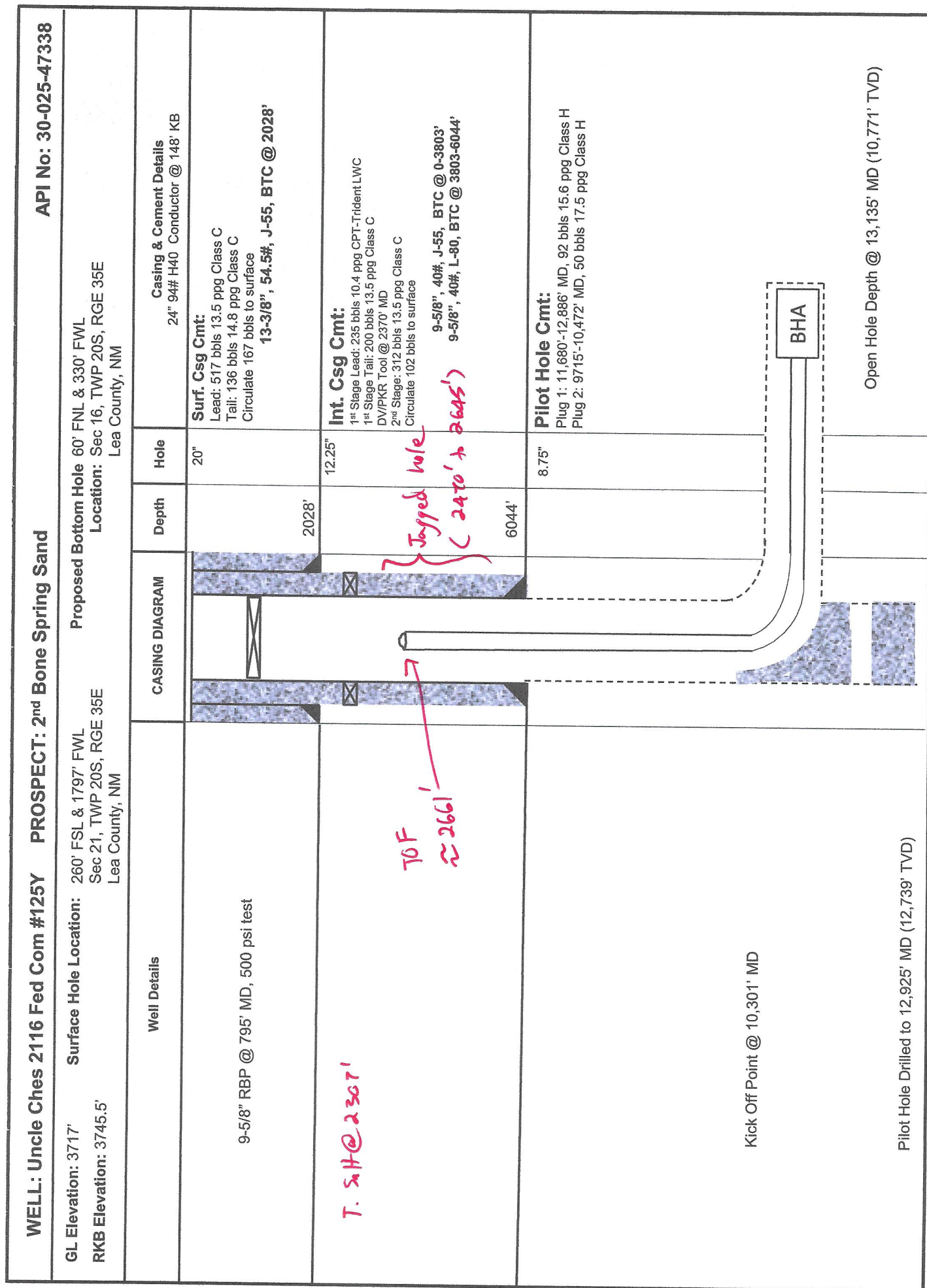
Refer to sundry ID: 2633265

Skid well API # 30-025-49382

P&A WELLBORE SCHEMATIC

WELL: Uncle Ches 2116 Fed Com #125Y		PROSPECT: 2 nd Bone Spring Sand		API No: 30-025-47338	
GL Elevation: 3717'		Surface Hole Location: 260' FSL & 1797' FWL Sec 21, TWP 20S, RGE 35E Lea County, NM		Proposed Bottom Hole 60' FNL & 330' FWL Location: Sec 16, TWP 20S, RGE 35E Lea County, NM	
RKB Elevation: 3745.5'					
Well Details	CASING DIAGRAM	Depth	Hole	Casing & Cement Details	
100' Cement Plug @ 0' <i>Spot 35 SX</i> 9-5/8" Cast Iron Bridge Plug @ 1,700' <i>Spot 25 SX and leak test CIP</i> 400' Cement Plug @ 1,830' 9-5/8" Cast Iron Cement Retainer @ 1,930' <i>2420'</i> <i>Spot 195 SX above CIPR (2420' to 1830') Work Tag</i>		2028'	20"	Surf. Csg Cmt: Lead: 517 bbls 13.5 ppg Class C Tail: 136 bbls 14.8 ppg Class C Circulate 167 bbls to surface 13-3/8", 54.5#, J-55, BTC @ 2028'	
		12.25'		Int. Csg Cmt: 1 st Stage Lead: 235 bbls 10.4 ppg CPT-Trident LWC 1 st Stage Tail: 200 bbls 13.5 ppg Class C DV/PKR Tool @ 2370' MD 2 nd Stage: 312 bbls 13.5 ppg Class C Circulate 102 bbls to surface 9-5/8", 40#, J-55, BTC @ 0-3803' 9-5/8", 40#, L-80, BTC @ 3803-6044'	
		6044'	8.75"	Pilot Hole Cmt: Plug 1: 11,680'-12,886' MD, 92 bbls 15.6 ppg Class H Plug 2: 9715'-10,472' MD, 50 bbls 17.5 ppg Class H	
Kick Off Point @ 10,301' MD Pilot Hole Drilled to 12,925' MD (12,739' TVD)				Open Hole Depth @ 13,135' MD (10,771' TVD)	

CURRENT WELLBORE SCHEMATIC, 12/01/2021



**BUREAU OF LAND MANAGEMENT
Carlsbad Field Office
620 East Greene Street
Carlsbad, New Mexico 88220
575-234-5972**

**Permanent Abandonment of Federal Wells
Conditions of Approval (LPC Habitat)**

Failure to comply with the following Conditions of Approval may result in a Notice of Incidents of Noncompliance (INC) in accordance with 43 CFR 3163.1.

1. Plugging operations shall commence within **ninety (90)** days from the approval date of this Notice of Intent to Abandon.

If you are unable to plug the well by the 90th day provide this office, prior to the 90th day, with the reason for not meeting the deadline and a date when we can expect the well to be plugged. Failure to do so will result in enforcement action.

The rig used for the plugging procedure cannot be released and moved off without the prior approval of the authorized officer. Failure to do so may result in enforcement action.

2. **Notification:** Contact the appropriate BLM office at least 24 hours prior to the commencing of any plugging operations. For wells in Chaves and Roosevelt County, call 575-627-0272; Eddy County, call 575-361-2822; Lea County, call 575-393-3612.

3. **Blowout Preventers:** A blowout preventer (BOP), as appropriate, shall be installed before commencing any plugging operation. The BOP must be installed and maintained as per API and manufacturer recommendations. The minimum BOP requirement is a 2M system for a well not deeper than 9,090 feet; a 3M system for a well not deeper than 13,636 feet; and a 5M system for a well not deeper than 22,727 feet.

4. **Mud Requirement:** Mud shall be placed between all plugs. Minimum consistency of plugging mud shall be obtained by mixing at the rate of 25 sacks (50 pounds each) of gel per 100 barrels of brine water. Minimum nine (9) pounds per gallon.

5. **Cement Requirement:** Sufficient cement shall be used to bring any required plug to the specified depth and length. Any given cement volumes on the proposed plugging procedure are merely estimates and are not final. Unless specific approval is received, no plug except the surface plug shall be less than 25 sacks of cement. Any plug that requires a tag will have a minimum WOC time of 4 hours.

In lieu of a cement plug across perforations in a cased hole (not for any other plugs), a bridge plug set within 50 feet to 100 feet above the perforations shall be capped with 25 sacks of cement. If a bailer is used to cap this plug, 35 feet of cement shall be sufficient. **Before pumping or bailing cement on top of CIBP, tag will be required to verify depth. Based on depth, a tag of the cement may be deemed necessary.**

Unless otherwise specified in the approved procedure, the cement plug shall consist of either Neat Class "C", for up to 7,500 feet of depth or Neat Class "H", for deeper than 7,500 feet plugs.

6. Below Ground Level Cap (Lesser Prairie-Chicken Habitat): All casing shall be cut-off at the base of the cellar or 3 feet below final restored ground level (whichever is deeper). **The BLM is to be notified a minimum of 4 hours prior to the wellhead being cut off to verify that cement is to surface in the casing and all annuluses. Wellhead cut off shall commence within ten (10) calendar days of the well being plugged. If the cut off cannot be done by the 10th day, the BLM is to be contacted with justification to receive an extension for completing the cut off.** Upon the plugging and subsequent abandonment of wells that are located in lesser prairie-chicken habitat, the casings shall be cut-off at the base of the cellar or 3 feet below final restored ground level (whichever is deeper). The well bore shall then be covered with a metal plate at least ¼ inch thick and welded in place. A weep hole shall be left in the plate and/or casing.

NMOCD also requires the operator to notify NMOCD when this type of dry hole marker is used. This can be done on the subsequent report of abandonment which is submitted to the BLM after the well is plugged. State that a below ground cap was installed as required in the COA's from the BLM.

7. Subsequent Plugging Reporting: Within 30 days after plugging work is completed, file one original and three copies of the Subsequent Report of Abandonment, Form 3160-5 to BLM. The report should give in detail the manner in which the plugging work was carried out, the extent (by depths) of cement plugs placed, and the size and location (by depths) of casing left in the well. **Show date well was plugged.**

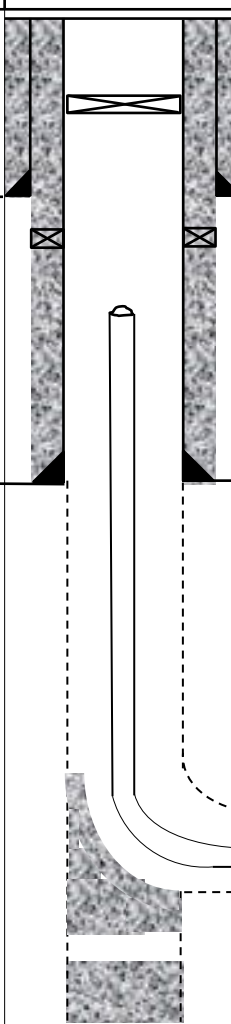
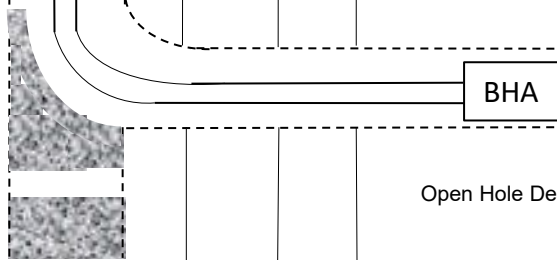
8. Trash: All trash, junk and other waste material shall be contained in trash cages or bins to prevent scattering and will be removed and deposited in an approved sanitary landfill. Burial on site is not permitted.

Following the submission and approval of the Subsequent Report of Abandonment, surface restoration will be required. See attached reclamation objectives.

Timing Limitation Stipulation/ Condition of Approval for Lesser Prairie-Chicken:

From March 1st through June 15th annually, abandonment activities will be allowed except between the hours from 3:00 am and 9:00 am. Normal vehicle use on existing roads will not be restricted

CURRENT WELLBORE SCHEMATIC, 12/01/2021

WELL: Uncle Ches 2116 Fed Com #125Y PROSPECT: 2 nd Bone Spring Sand		API No: 30-025-47338		
GL Elevation: 3717'	Surface Hole Location: 260' FSL & 1797' FWL Sec 21, TWP 20S, RGE 35E Lea County, NM	Proposed Bottom Hole 60' FNL & 330' FWL Location: Sec 16, TWP 20S, RGE 35E Lea County, NM		
RKB Elevation: 3745.5'				
Well Details	CASING DIAGRAM	Depth	Hole	Casing & Cement Details 24" 94# H40 Conductor @ 148' KB
9-5/8" RBP @ 795' MD, 500 psi test		2028'	20"	Surf. Csg Cmt: Lead: 517 bbls 13.5 ppg Class C Tail: 136 bbls 14.8 ppg Class C Circulate 167 bbls to surface 13-3/8", 54.5#, J-55, BTC @ 2028'
		6044'	12.25"	Int. Csg Cmt: 1 st Stage Lead: 235 bbls 10.4 ppg CPT-Trident LWC 1 st Stage Tail: 200 bbls 13.5 ppg Class C DV/PKR Tool @ 2370' MD 2 nd Stage: 312 bbls 13.5 ppg Class C Circulate 102 bbls to surface 9-5/8", 40#, J-55, BTC @ 0-3803' 9-5/8", 40#, L-80, BTC @ 3803-6044'
Kick Off Point @ 10,301' MD			8.75"	Pilot Hole Cmt: Plug 1: 11,680'-12,886' MD, 92 bbls 15.6 ppg Class H Plug 2: 9715'-10,472' MD, 50 bbls 17.5 ppg Class H
Pilot Hole Drilled to 12,925' MD (12,739' TVD)				BHA Open Hole Depth @ 13,135' MD (10,771' TVD)

WELL: Uncle Ches 2116 Fed Com #125Y			PROSPECT: 2 nd Bone Spring Sand		API No: 30-025-47338	
GL Elevation: 3717'		Surface Hole Location: 260' FSL & 1797' FWL Sec 21, TWP 20S, RGE 35E Lea County, NM		Proposed Bottom Hole 60' FNL & 330' FWL Location: Sec 16, TWP 20S, RGE 35E Lea County, NM		
RKB Elevation: 3745.5'						
Well Details		CASING DIAGRAM		Depth	Hole	Casing & Cement Details 24" 94# H40 Conductor @ 148' KB
100' Cement Plug @ 0'					20"	Surf. Csg Cmt: Lead: 517 bbls 13.5 ppg Class C Tail: 136 bbls 14.8 ppg Class C Circulate 167 bbls to surface 13-3/8", 54.5#, J-55, BTC @ 2028'
9-5/8" Cast Iron Bridge Plug @ 1,700'						
100' Cement Plug @ 1,830' 9-5/8" Cast Iron Cement Retainer @ 1,930'				2028'		
					12.25"	Int. Csg Cmt: 1 st Stage Lead: 235 bbls 10.4 ppg CPT-Trident LWC 1 st Stage Tail: 200 bbls 13.5 ppg Class C DV/PKR Tool @ 2370' MD 2 nd Stage: 312 bbls 13.5 ppg Class C Circulate 102 bbls to surface 9-5/8", 40#, J-55, BTC @ 0-3803' 9-5/8", 40#, L-80, BTC @ 3803-6044'
				6044'		
Kick Off Point @ 10,301' MD					8.75"	Pilot Hole Cmt: Plug 1: 11,680'-12,886' MD, 92 bbls 15.6 ppg Class H Plug 2: 9715'-10,472' MD, 50 bbls 17.5 ppg Class H
Pilot Hole Drilled to 12,925' MD (12,739' TVD)						BHA
						Open Hole Depth @ 13,135' MD (10,771' TVD)

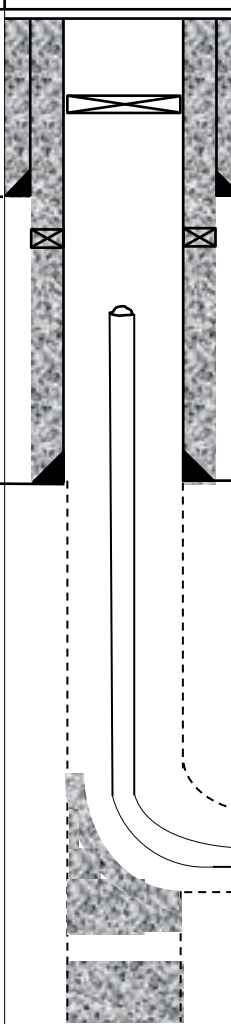
BLM Bond No. NMB001079 Surety Bond No. RLB0015172

As previously discussed with the Division, during normal drilling operations on this well we became stuck and ultimately drilled a replacement well.

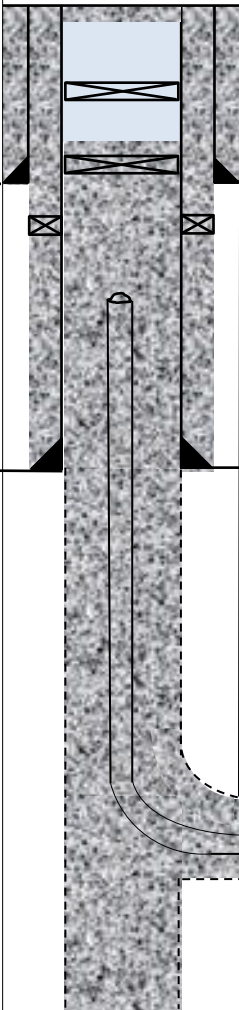
After unsuccessful fishing operations on this well, we plan to plug and abandon this original uncompleted wellbore, as follows:

1. Arrive on location, hold PJSM, MIRU WSU, NU BOPs.
2. Set cast iron cement retainer (CICR) @ 1,930' inside of 9-5/8" 40# J-55 BTC casing.
3. Pump 4,222 sacks of 14.8 ppg Class C cement through CICR or until cement bridges off and no additional volume is able to be pumped.
4. Circulate and displace hole above CICR with mud laden fluid (MLF) at 25sx/100 bbls concentration.
5. Spot 100' Class C cement above CICR @ 1830' (TOC). WOC and tag.
6. Set cast iron bridge plug (CIBP) @ 1,700'.
7. Spot 100' Class C cement @ 0' (TOC).
8. Cut off wellhead.
9. Install above ground marker per NMOCD requirements.

CURRENT WELLBORE SCHEMATIC, 12/01/2021

WELL: Uncle Ches 2116 Fed Com #125Y PROSPECT: 2 nd Bone Spring Sand		API No: 30-025-47338		
GL Elevation: 3717'	Surface Hole Location: 260' FSL & 1797' FWL Sec 21, TWP 20S, RGE 35E Lea County, NM	Proposed Bottom Hole 60' FNL & 330' FWL Location: Sec 16, TWP 20S, RGE 35E Lea County, NM		
RKB Elevation: 3745.5'				
Well Details	CASING DIAGRAM	Depth	Hole	Casing & Cement Details 24" 94# H40 Conductor @ 148' KB
9-5/8" RBP @ 795' MD, 500 psi test		2028'	20"	Surf. Csg Cmt: Lead: 517 bbls 13.5 ppg Class C Tail: 136 bbls 14.8 ppg Class C Circulate 167 bbls to surface 13-3/8", 54.5#, J-55, BTC @ 2028'
		6044'	12.25"	Int. Csg Cmt: 1 st Stage Lead: 235 bbls 10.4 ppg CPT-Trident LWC 1 st Stage Tail: 200 bbls 13.5 ppg Class C DV/PKR Tool @ 2370' MD 2 nd Stage: 312 bbls 13.5 ppg Class C Circulate 102 bbls to surface 9-5/8", 40#, J-55, BTC @ 0-3803' 9-5/8", 40#, L-80, BTC @ 3803-6044'
Kick Off Point @ 10,301' MD			8.75"	Pilot Hole Cmt: Plug 1: 11,680'-12,886' MD, 92 bbls 15.6 ppg Class H Plug 2: 9715'-10,472' MD, 50 bbls 17.5 ppg Class H
Pilot Hole Drilled to 12,925' MD (12,739' TVD)				BHA Open Hole Depth @ 13,135' MD (10,771' TVD)

P&A WELLBORE SCHEMATIC

WELL: Uncle Ches 2116 Fed Com #125Y		PROSPECT: 2 nd Bone Spring Sand		API No: 30-025-47338	
GL Elevation: 3717'	Surface Hole Location: 260' FSL & 1797' FWL Sec 21, TWP 20S, RGE 35E Lea County, NM	Proposed Bottom Hole 60' FNL & 330' FWL Location: Sec 16, TWP 20S, RGE 35E Lea County, NM			
RKB Elevation: 3745.5'					
Well Details	CASING DIAGRAM	Depth	Hole	Casing & Cement Details 24" 94# H40 Conductor @ 148' KB	
100' Cement Plug @ 0'			20"	Surf. Csg Cmt: Lead: 517 bbls 13.5 ppg Class C Tail: 136 bbls 14.8 ppg Class C Circulate 167 bbls to surface 13-3/8", 54.5#, J-55, BTC @ 2028'	
9-5/8" Cast Iron Bridge Plug @ 1,700'					
100' Cement Plug @ 1,830'		2028'			
9-5/8" Cast Iron Cement Retainer @ 1,930'					
			12.25"	Int. Csg Cmt: 1 st Stage Lead: 235 bbls 10.4 ppg CPT-Trident LWC 1 st Stage Tail: 200 bbls 13.5 ppg Class C DV/PKR Tool @ 2370' MD 2 nd Stage: 312 bbls 13.5 ppg Class C Circulate 102 bbls to surface 9-5/8", 40#, J-55, BTC @ 0-3803' 9-5/8", 40#, L-80, BTC @ 3803-6044'	
		6044'			
Kick Off Point @ 10,301' MD			8.75"	Pilot Hole Cmt: Plug 1: 11,680'-12,886' MD, 92 bbls 15.6 ppg Class H Plug 2: 9715'-10,472' MD, 50 bbls 17.5 ppg Class H	
Pilot Hole Drilled to 12,925' MD (12,739' TVD)				Open Hole Depth @ 13,135' MD (10,771' TVD)	

PLUG AND ABANDONMENT CONDITIONS OF APPROVAL

OPERATOR'S NAME:	Matador Production Company
LEASE NO.:	NMNM132079
WELL NAME & NO.:	Uncle Ches 2116 Fed Com 125Y
US Well Number:	3002547338
LOCATION:	Section 21, T.20 S., R.35 E., NMPM
COUNTY:	Lea County, New Mexico

BLM Bond No. NMB001079

Surety Bond No. RLB0015172

As previously discussed with the Division, during normal drilling operations on this well we became stuck and ultimately drilled a replacement well. After unsuccessful fishing operations on this well, we plan to plug and abandon this original uncompleted wellbore, as follows:

1. Arrive on location, hold PJSM, MIRU WSU, NU BOPs.
2. Set cast iron cement retainer (CICR) @ ~~1,930'~~^{2420'} inside of 9-5/8" 40# J-55 BTC casing.
3. Pump 4,222 sacks of 14.8 ppg Class C cement through CICR or until cement bridges off and no additional volume is able to be pumped.
4. Circulate and displace hole above CICR with mud laden fluid (MLF) at 25sx/100 bbls concentration.
5. Spot ~~100'~~^{195 SX} Class C cement above CICR @ 1830' (TOC). WOC and tag. (2420' to 1830')
6. Set cast iron bridge plug (CIBP) @ 1,700'. Leak test CIBP Spot 25 SX
7. Spot 100' Class C cement @ 0' (TOC). 35 SX
8. Cut off wellhead.
9. Install above ground marker per NMOCD requirements.

**Approval Subject to General Requirements and Special
Stipulations Attached**

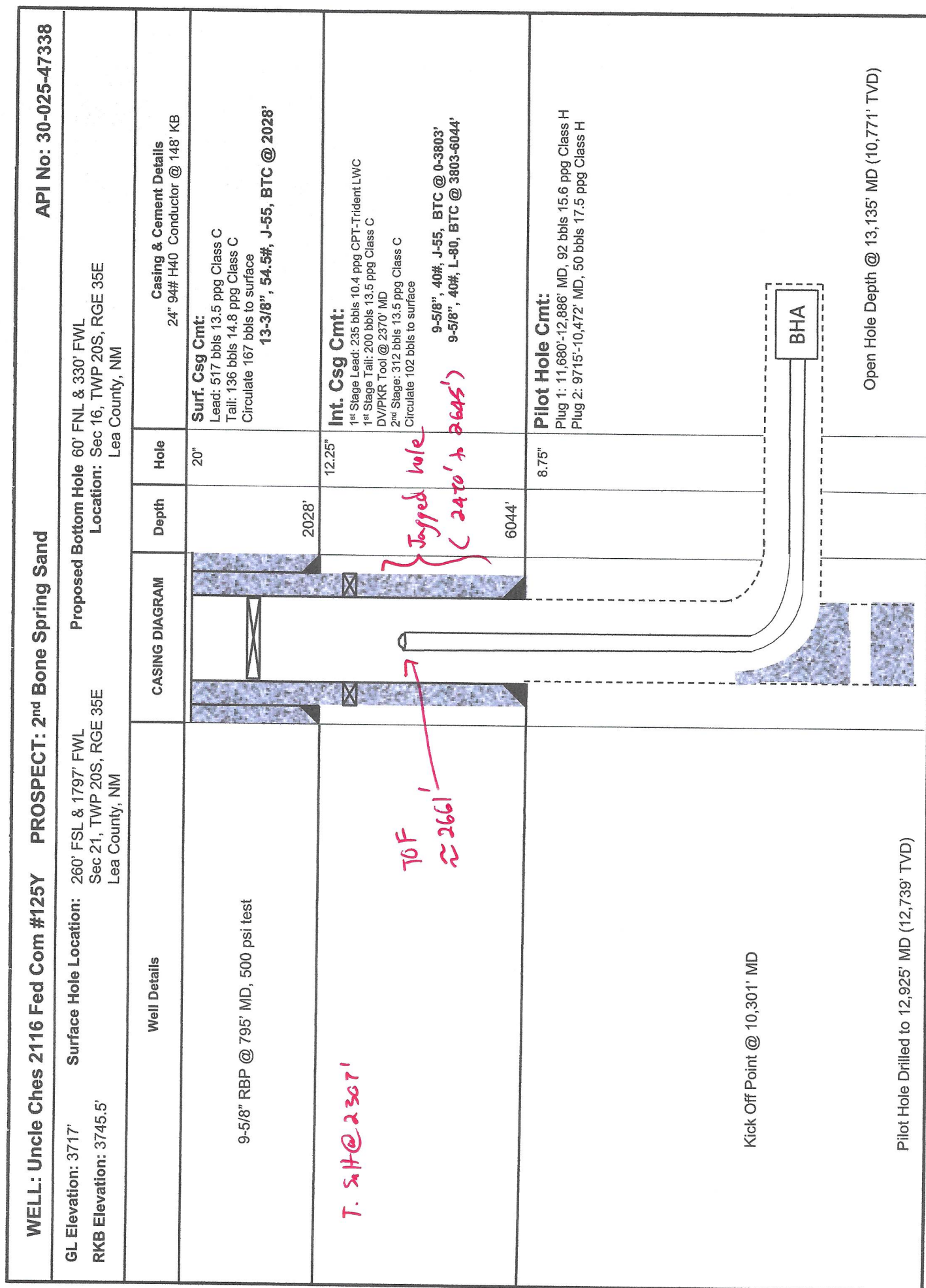
Refer to sundry ID: 2633265

Skid well API # 30-025-49382

P&A WELLBORE SCHEMATIC

WELL: Uncle Ches 2116 Fed Com #125Y		PROSPECT: 2 nd Bone Spring Sand		API No: 30-025-47338	
GL Elevation: 3717'		Surface Hole Location: 260' FSL & 1797' FWL Sec 21, TWP 20S, RGE 35E Lea County, NM		Proposed Bottom Hole 60' FNL & 330' FWL Location: Sec 16, TWP 20S, RGE 35E Lea County, NM	
RKB Elevation: 3745.5'					
Well Details	CASING DIAGRAM	Depth	Hole	Casing & Cement Details	
100' Cement Plug @ 0' <i>Spot 35 SX</i> 9-5/8" Cast Iron Bridge Plug @ 1,700' <i>Spot 25 SX and leak test CIP</i> 400' Cement Plug @ 1,830' 9-5/8" Cast Iron Cement Retainer @ 1,930' <i>2420'</i> <i>Spot 195 SX above CIPR (2420' to 1830') Work Tag</i>		2028'	20"	Surf. Csg Cmt: Lead: 517 bbls 13.5 ppg Class C Tail: 136 bbls 14.8 ppg Class C Circulate 167 bbls to surface 13-3/8", 54.5#, J-55, BTC @ 2028'	
		12.25'		Int. Csg Cmt: 1 st Stage Lead: 235 bbls 10.4 ppg CPT-Trident LWC 1 st Stage Tail: 200 bbls 13.5 ppg Class C DV/PKR Tool @ 2370' MD 2 nd Stage: 312 bbls 13.5 ppg Class C Circulate 102 bbls to surface 9-5/8", 40#, J-55, BTC @ 0-3803' 9-5/8", 40#, L-80, BTC @ 3803-6044'	
		6044'	8.75"	Pilot Hole Cmt: Plug 1: 11,680'-12,886' MD, 92 bbls 15.6 ppg Class H Plug 2: 9715'-10,472' MD, 50 bbls 17.5 ppg Class H	
Kick Off Point @ 10,301' MD Pilot Hole Drilled to 12,925' MD (12,739' TVD)				Open Hole Depth @ 13,135' MD (10,771' TVD)	

CURRENT WELLBORE SCHEMATIC, 12/01/2021



**BUREAU OF LAND MANAGEMENT
Carlsbad Field Office
620 East Greene Street
Carlsbad, New Mexico 88220
575-234-5972**

**Permanent Abandonment of Federal Wells
Conditions of Approval (LPC Habitat)**

Failure to comply with the following Conditions of Approval may result in a Notice of Incidents of Noncompliance (INC) in accordance with 43 CFR 3163.1.

1. Plugging operations shall commence within ninety (90) days from the approval date of this Notice of Intent to Abandon.

If you are unable to plug the well by the 90th day provide this office, prior to the 90th day, with the reason for not meeting the deadline and a date when we can expect the well to be plugged. Failure to do so will result in enforcement action.

The rig used for the plugging procedure cannot be released and moved off without the prior approval of the authorized officer. Failure to do so may result in enforcement action.

2. **Notification:** Contact the appropriate BLM office at least 24 hours prior to the commencing of any plugging operations. For wells in Chaves and Roosevelt County, call 575-627-0272; Eddy County, call 575-361-2822; Lea County, call 575-393-3612.

3. **Blowout Preventers:** A blowout preventer (BOP), as appropriate, shall be installed before commencing any plugging operation. The BOP must be installed and maintained as per API and manufacturer recommendations. The minimum BOP requirement is a 2M system for a well not deeper than 9,090 feet; a 3M system for a well not deeper than 13,636 feet; and a 5M system for a well not deeper than 22,727 feet.

4. **Mud Requirement:** Mud shall be placed between all plugs. Minimum consistency of plugging mud shall be obtained by mixing at the rate of 25 sacks (50 pounds each) of gel per 100 barrels of brine water. Minimum nine (9) pounds per gallon.

5. **Cement Requirement:** Sufficient cement shall be used to bring any required plug to the specified depth and length. Any given cement volumes on the proposed plugging procedure are merely estimates and are not final. Unless specific approval is received, no plug except the surface plug shall be less than 25 sacks of cement. Any plug that requires a tag will have a minimum WOC time of 4 hours.

In lieu of a cement plug across perforations in a cased hole (not for any other plugs), a bridge plug set within 50 feet to 100 feet above the perforations shall be capped with 25 sacks of cement. If a bailer is used to cap this plug, 35 feet of cement shall be sufficient. **Before pumping or bailing cement on top of CIBP, tag will be required to verify depth. Based on depth, a tag of the cement may be deemed necessary.**

Unless otherwise specified in the approved procedure, the cement plug shall consist of either Neat Class "C", for up to 7,500 feet of depth or Neat Class "H", for deeper than 7,500 feet plugs.

6. Below Ground Level Cap (Lesser Prairie-Chicken Habitat): All casing shall be cut-off at the base of the cellar or 3 feet below final restored ground level (whichever is deeper). **The BLM is to be notified a minimum of 4 hours prior to the wellhead being cut off to verify that cement is to surface in the casing and all annuluses. Wellhead cut off shall commence within ten (10) calendar days of the well being plugged. If the cut off cannot be done by the 10th day, the BLM is to be contacted with justification to receive an extension for completing the cut off.** Upon the plugging and subsequent abandonment of wells that are located in lesser prairie-chicken habitat, the casings shall be cut-off at the base of the cellar or 3 feet below final restored ground level (whichever is deeper). The well bore shall then be covered with a metal plate at least ¼ inch thick and welded in place. A weep hole shall be left in the plate and/or casing.

NMOCD also requires the operator to notify NMOCD when this type of dry hole marker is used. This can be done on the subsequent report of abandonment which is submitted to the BLM after the well is plugged. State that a below ground cap was installed as required in the COA's from the BLM.

7. Subsequent Plugging Reporting: Within 30 days after plugging work is completed, file one original and three copies of the Subsequent Report of Abandonment, Form 3160-5 to BLM. The report should give in detail the manner in which the plugging work was carried out, the extent (by depths) of cement plugs placed, and the size and location (by depths) of casing left in the well. **Show date well was plugged.**

8. Trash: All trash, junk and other waste material shall be contained in trash cages or bins to prevent scattering and will be removed and deposited in an approved sanitary landfill. Burial on site is not permitted.

Following the submission and approval of the Subsequent Report of Abandonment, surface restoration will be required. See attached reclamation objectives.

Timing Limitation Stipulation/ Condition of Approval for Lesser Prairie-Chicken:

From March 1st through June 15th annually, abandonment activities will be allowed except between the hours from 3:00 am and 9:00 am. Normal vehicle use on existing roads will not be restricted

District I
1625 N. French Dr., Hobbs, NM 88240
Phone:(575) 393-6161 Fax:(575) 393-0720

District II
811 S. First St., Artesia, NM 88210
Phone:(575) 748-1283 Fax:(575) 748-9720

District III
1000 Rio Brazos Rd., Aztec, NM 87410
Phone:(505) 334-6178 Fax:(505) 334-6170

District IV
1220 S. St Francis Dr., Santa Fe, NM 87505
Phone:(505) 476-3470 Fax:(505) 476-3462

State of New Mexico
Energy, Minerals and Natural Resources
Oil Conservation Division
1220 S. St Francis Dr.
Santa Fe, NM 87505

CONDITIONS

Action 64724

CONDITIONS

Operator: MATADOR PRODUCTION COMPANY One Lincoln Centre Dallas, TX 75240	OGRID: 228937
	Action Number: 64724
	Action Type: [C-103] NOI Plug & Abandon (C-103F)

CONDITIONS

Created By	Condition	Condition Date
kfortner	Like approval from BLM	12/2/2021