

Well Name: CLINCHER FED COM	Well Location: T25S / R35E / SEC 1 / LOT 4 / 32.166031 / -103.328393	County or Parish/State: LEA / NM
Well Number: 601H	Type of Well: OIL WELL	Allottee or Tribe Name:
Lease Number: NMNM138897	Unit or CA Name:	Unit or CA Number:
US Well Number: 3002548808	Well Status: Drilling Well	Operator: FRANKLIN MOUNTAIN ENERGY LLC

Subsequent Report

Sundry ID: 2509334

Type of Submission: Subsequent Report

Date Sundry Submitted: 07/22/2021

Date Operation Actually Began: 07/01/2021

Type of Action: Other

Time Sundry Submitted: 05:10

Actual Procedure: Franklin Mountain Energy, LLC (FME), Operator of the above captioned well, respectfully submits the attached, updated, C-102 for BLM record.

SR Attachments

Actual Procedure

C_102_CLINCHER_FED_COM_601H_20210722170954.pdf

Well Number: 601H

Type of Well: OIL WELL

Allottee or Tribe Name:

Lease Number: NMNM138897

Unit or CA Name:

Unit or CA Number:

US Well Number: 3002548808

Well Status: Drilling Well

Operator: FRANKLIN
MOUNTAIN ENERGY LLC

Operator Certification

I certify that the foregoing is true and correct. Title 18 U.S.C. Section 1001 and Title 43 U.S.C. Section 1212, make it a crime for any person knowingly and willfully to make to any department or agency of the United States any false, fictitious or fraudulent statements or representations as to any matter within its jurisdiction. Electronic submission of Sundry Notices through this system satisfies regulations requiring a submission of Form 3160-5 or a Sundry Notice.

Operator Electronic Signature: RACHAEL OVERBEY

Signed on: JUL 22, 2021 05:09 PM

Name: FRANKLIN MOUNTAIN ENERGY LLC

Title: Director – Operations Planning and Regulatory

Street Address: 2401 E 2nd Avenue, Suite 300

City: Denver

State: CO

Phone: (720) 414-7868

Email address: roverbey@fmellc.com

Field Representative

Representative Name:

Street Address:

City:

State:

Zip:

Phone:

Email address:

BLM Point of Contact

BLM POC Name: CHRISTOPHER WALLS

BLM POC Title: Petroleum Engineer

BLM POC Phone: 5752342234

BLM POC Email Address: cwalls@blm.gov

Disposition: Accepted

Disposition Date: 11/29/2021

Signature: Chris Walls

District I
1625 N. French Dr., Hobbs, NM 88240
Phone: (575) 393-6161 Fax: (575) 393-0720
District II
811 S. First St., Artesia, NM 88210
Phone: (575) 748-1283 Fax: (575) 748-9720
District III
1000 Rio Brazos Road, Aztec, NM 87410
Phone: (505) 334-6178 Fax: (505) 334-6170
District IV
1220 S. St. Francis Dr., Santa Fe, NM 87505
Phone: (505) 476-3460 Fax: (505) 476-3462

State of New Mexico
Energy, Minerals & Natural Resources Department
OIL CONSERVATION DIVISION
1220 South St. Francis Dr.
Santa Fe, NM 87505

Form C-102
Revised August 1, 2011
Submit one copy to appropriate
District Office

☒ AMENDED REPORT

WELL LOCATION AND ACREAGE DEDICATION PLAT

¹ API Number 30-025-48808	² Pool Code 98185	³ Pool Name WC-025 G-09 S253502B; LWR BONE SPRING
⁴ Property Code 330789	⁵ Property Name CLINCHER FEDERAL	⁶ Well Number 601H
⁷ OGRID No. 373910	⁸ Operator Name FRANKLIN MOUNTAIN ENERGY LLC	⁹ Elevation 3273.6'

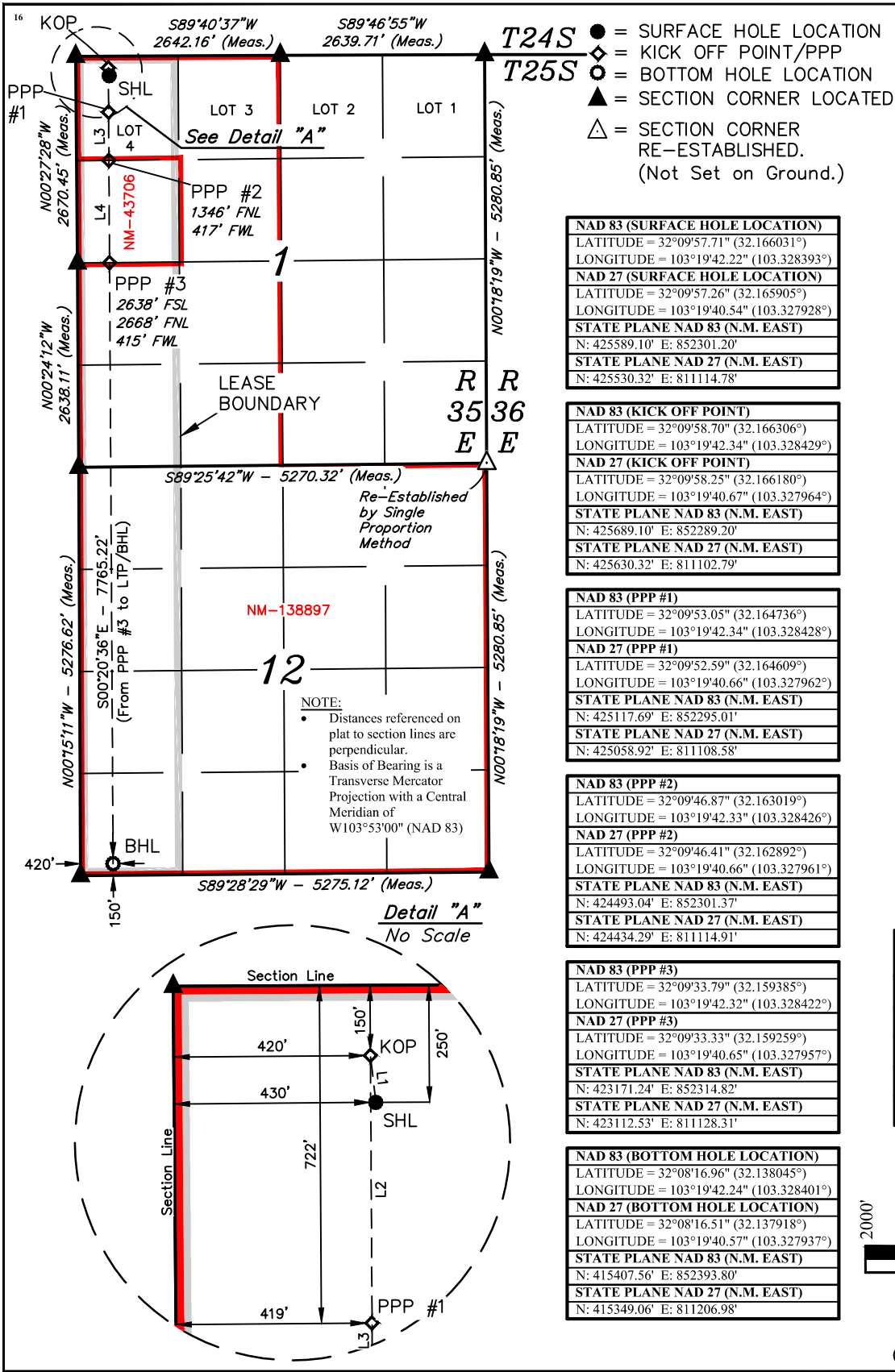
¹⁰ Surface Location

UL or lot no.	Section	Township	Range	Lot Idn	Feet from the	North/South line	Feet from the	East/West line	County
4	1	25S	35E		250	NORTH	430	WEST	LEA

¹¹ Bottom Hole Location If Different From Surface

UL or lot no.	Section	Township	Range	Lot Idn	Feet from the	North/South line	Feet from the	East/West line	County
M	12	25S	35E		150	SOUTH	420	WEST	LEA
¹² Dedicated Acres 320.7	¹³ Joint or Infill	¹⁴ Consolidation Code	¹⁵ Order No.						

No allowable will be assigned to this completion until all interests have been consolidated or a non-standard unit has been approved by the division.



- T24S** ● = SURFACE HOLE LOCATION
T25S ◆ = KICK OFF POINT/PPP
○ = BOTTOM HOLE LOCATION
▲ = SECTION CORNER LOCATED
△ = SECTION CORNER RE-ESTABLISHED.
(Not Set on Ground.)

NAD 83 (SURFACE HOLE LOCATION) LATITUDE = 32°09'57.71" (32.166031°) LONGITUDE = 103°19'42.22" (103.328393°) NAD 27 (SURFACE HOLE LOCATION) LATITUDE = 32°09'57.26" (32.165905°) LONGITUDE = 103°19'40.54" (103.327928°) STATE PLANE NAD 83 (N.M. EAST) N: 425589.10' E: 852301.20' STATE PLANE NAD 27 (N.M. EAST) N: 425530.32' E: 811114.78'
--

NAD 83 (KICK OFF POINT) LATITUDE = 32°09'58.70" (32.166306°) LONGITUDE = 103°19'42.34" (103.328429°) NAD 27 (KICK OFF POINT) LATITUDE = 32°09'58.25" (32.166180°) LONGITUDE = 103°19'40.67" (103.327964°) STATE PLANE NAD 83 (N.M. EAST) N: 425689.10' E: 852289.20' STATE PLANE NAD 27 (N.M. EAST) N: 425630.32' E: 811102.79'
--

NAD 83 (PPP #1) LATITUDE = 32°09'53.05" (32.164736°) LONGITUDE = 103°19'42.34" (103.328428°) NAD 27 (PPP #1) LATITUDE = 32°09'52.59" (32.164609°) LONGITUDE = 103°19'40.66" (103.327962°) STATE PLANE NAD 83 (N.M. EAST) N: 425117.69' E: 852295.01' STATE PLANE NAD 27 (N.M. EAST) N: 425058.92' E: 811108.58'
--

NAD 83 (PPP #2) LATITUDE = 32°09'46.87" (32.163019°) LONGITUDE = 103°19'42.33" (103.328426°) NAD 27 (PPP #2) LATITUDE = 32°09'46.41" (32.162892°) LONGITUDE = 103°19'40.66" (103.327961°) STATE PLANE NAD 83 (N.M. EAST) N: 424493.04' E: 852301.37' STATE PLANE NAD 27 (N.M. EAST) N: 424434.29' E: 811114.91'
--

NAD 83 (PPP #3) LATITUDE = 32°09'33.79" (32.159385°) LONGITUDE = 103°19'42.32" (103.328422°) NAD 27 (PPP #3) LATITUDE = 32°09'33.33" (32.159259°) LONGITUDE = 103°19'40.65" (103.327957°) STATE PLANE NAD 83 (N.M. EAST) N: 423171.24' E: 852314.82' STATE PLANE NAD 27 (N.M. EAST) N: 423112.53' E: 811128.31'
--

NAD 83 (BOTTOM HOLE LOCATION) LATITUDE = 32°08'16.96" (32.138045°) LONGITUDE = 103°19'42.24" (103.328401°) NAD 27 (BOTTOM HOLE LOCATION) LATITUDE = 32°08'16.51" (32.137918°) LONGITUDE = 103°19'40.57" (103.327937°) STATE PLANE NAD 83 (N.M. EAST) N: 415407.56' E: 852393.80' STATE PLANE NAD 27 (N.M. EAST) N: 415349.06' E: 811206.98'
--

¹⁷ OPERATOR CERTIFICATION
I hereby certify that the information contained herein is true and complete to the best of my knowledge and belief, and that this organization either owns a working interest or unleased mineral interest in the land including the proposed bottom hole location or has a right to drill this well at this location pursuant to a contract with an owner of such a mineral or working interest, or to a voluntary pooling agreement or a compulsory pooling order heretofore entered by the division.

Signature: *Shelly Albrecht* Date: 7/22/2021

Shelly Albrecht
Printed Name
salbrecht@fmellc.com
E-mail Address

¹⁸ SURVEYOR CERTIFICATION
I hereby certify that the well location shown on this plat was plotted from field notes of actual surveys made by me or under my supervision, and that the same is true and correct to the best of my belief.

February 13, 2020
Date of Survey
Signature and Seal of Professional Surveyor:



Certificate Number:

LINE TABLE		
LINE	DIRECTION	LENGTH
L1	N06°36'07"W	100.73'
L2	S00°20'36"E	571.52'
L3	S00°20'36"E	624.77'
L4	S00°20'36"E	1322.06'



S C A L E
DRAWN BY: S.F. 02-24-20
REV: 2 A.T. 07-21-21
(UPDATE DEDICATED ACRES)

District I

1625 N. French Dr., Hobbs, NM 88240
Phone:(575) 393-6161 Fax:(575) 393-0720

District II

811 S. First St., Artesia, NM 88210
Phone:(575) 748-1283 Fax:(575) 748-9720

District III

1000 Rio Brazos Rd., Aztec, NM 87410
Phone:(505) 334-6178 Fax:(505) 334-6170

District IV

1220 S. St Francis Dr., Santa Fe, NM 87505
Phone:(505) 476-3470 Fax:(505) 476-3462

State of New Mexico
Energy, Minerals and Natural Resources
Oil Conservation Division
1220 S. St Francis Dr.
Santa Fe, NM 87505

CONDITIONS

Action 64930

CONDITIONS

Operator: Franklin Mountain Energy LLC 44 Cook Street Denver, CO 80206	OGRID: 373910
	Action Number: 64930
	Action Type: [C-103] NOI Change of Plans (C-103A)

CONDITIONS

Created By	Condition	Condition Date
pkautz	None	12/6/2021