

Submit 1 Copy To Appropriate District Office  
 District I – (575) 393-6161  
 1625 N. French Dr., Hobbs, NM 88240  
 District II – (575) 748-1283  
 811 S. First St., Artesia, NM 88210  
 District III – (505) 334-6178  
 1000 Rio Brazos Rd., Aztec, NM 87410  
 District IV – (505) 476-3460  
 1220 S. St. Francis Dr., Santa Fe, NM 87505

State of New Mexico  
 Energy, Minerals and Natural Resources

Form C-103  
 Revised July 18, 2013

OIL CONSERVATION DIVISION  
 1220 South St. Francis Dr.  
 Santa Fe, NM 87505

WELL API NO. <b>30-025-11565</b>
5. Indicate Type of Lease STATE <input type="checkbox"/> FEE <input checked="" type="checkbox"/>
6. State Oil & Gas Lease No.
7. Lease Name or Unit Agreement Name <b>South Justis Unit F</b>
8. Well Number <b>#18</b>
9. OGRID Number <b>240974</b>
10. Pool name or Wildcat <b>Justis; Blinberry-Tubb-Drinkard</b>
11. Elevation (Show whether DR, RKB, RT, GR, etc.) <b>3191'</b>

SUNDRY NOTICES AND REPORTS ON WELLS  
 (DO NOT USE THIS FORM FOR PROPOSALS TO DRILL OR TO DEEPEN OR PLUG BACK TO A DIFFERENT RESERVOIR. USE "APPLICATION FOR PERMIT" (FORM C-101) FOR SUCH PROPOSALS.)

1. Type of Well: Oil Well ☒ Gas Well ☐ Other ☐

2. Name of Operator  
**Legacy Reserves Operating LP**

3. Address of Operator  
**P.O. Box 10848, Midland, TX 79702**

4. Well Location  
 Unit Letter N : 660 feet from the S line and 1980 feet from the W line  
 Section 13 Township 25S Range 37E NMPM County Lea

12. Check Appropriate Box to Indicate Nature of Notice, Report or Other Data

NOTICE OF INTENTION TO:

PERFORM REMEDIAL WORK ☐ PLUG AND ABANDON ☐  
 TEMPORARILY ABANDON ☐ CHANGE PLANS ☐  
 PULL OR ALTER CASING ☐ MULTIPLE COMPL ☐  
 DOWNHOLE COMMINGLE ☐  
 CLOSED-LOOP SYSTEM ☐  
 OTHER: ☐

SUBSEQUENT REPORT OF:

REMEDIAL WORK ☐ ALTERING CASING ☐  
 COMMENCE DRILLING OPNS. ☐ **P AND A** ☒  
 CASING/CEMENT JOB ☐ PNR  
 OTHER: ☐

13. Describe proposed or completed operations. (Clearly state all pertinent details, and give pertinent dates, including estimated date of starting any proposed work). SEE RULE 19.15.7.14 NMAC. For Multiple Completions: Attach wellbore diagram of proposed completion or recompletion.

**09/02/2021** MIRU plugging equipment. **09/03/2021** ND well head, NU BOP. RIH w/ 6" guage ring, stacked out @ 1000'. Lost guage ring in hole. **09/07/21** RIH w/ overshot, tagged @ 5750'. POH w/ overshot & guage ring. Set 7" CIBP @ 5085'. Circ hole w/ MLF. Pressure tested csg, held 0 PSI. Spotted 25 sx class C cmt @ 5085-4936'. WOC. **09/08/21** Tagged plug @ 4941'. Spotted 30 sx class C cmt @ 4654-4475'. WOC. Tagged plug @ 4487'. Perf'd @ 3500'. Pressured up to 500 PSI. Spotted 35 sx class C cmt @ 3550-3341'. WOC. **09/09/21** Tagged plug @ 3327'. Perf'd @ 1850'. Pressured up on perfs to 500 PSI. Spotted 35 sx class C cmt @ 1900-1691'. WOC. Tagged plug @ 1712'. Perf'd @ 1500'. Pressured up on perfs to 500 PSI. Spotted 35 sx class C cmt @ 1550-1341'. WOC. **09/10/21** Tagged plug @ 1332'. Perf'd @ 460'. Pressured up on perfs to 500 PSI. Spotted 35 sx class C cmt @ 501-301'. WOC. Tagged plug @ 297'. Perf'd @ 200'. ND BOP, flanged up well. Sqz'd 80 sx class C cmt @ 200' to surface. Rigged down & moved off. **09/20/21** Moved in backhoe and welder, Cut off well head, notified Kerry Fortner w/ OCD via text message of cmt at surface. Welded on "Above Ground Dry Hole Marker". Backfilled cellar, cut off deadmen, cleaned location, and moved off.

Spud Date:

Rig Release Date:

I hereby certify that the information above is true and complete to the best of my knowledge and belief.

SIGNATURE  TITLE Compliance Coordinator DATE 10/13/2021

Type or print name Melanie Reyes E-mail address: mreyes@legacyreserves.com PHONE: (432) 689-5200

For State Use Only

APPROVED BY:  TITLE Compliance Officer A DATE 12/14/21

Conditions of Approval (if any) 575-263-6633

**Legacy Reserves**Daily Operations Report  
(Selected Days Only)

9/1/2021 thru 9/30/2021

Page 1

Printed 10/13/2021

**South Justis Unit # F18**

Lea Co., NM

Event Date: 9/3/2021

BOLO ID: 300054.47.02

P/A

**Sep 3, 2021 Friday Day 1**

RIH WITH GAUGE RING, COULD NOT GET PAST 1000' POOH WITH GAUGE RING. LEFT GAUGE RING IN THE HOLE. SDFWE

Daily Cost: \$224

Cum. Cost: \$224

**Sep 7, 2021 Tuesday Day 2**

RIH WITH OPEN ENDED TUBING AND TAG 5750'. POOH WITH 75 STANDS, RIH WITH 7" CIBP TO 5085'. SET CIBP 5085, CIRV 200 BBL OF MLF PRESSURE TESTING CSG. DID NOT HOLD PRESSURE. SPOT 25 SX OF CLASS C NEAT CEMENT FROM 5085' TO CTOC 4936'. POOH 12 STANDS, CLOSE WELL SHUTDOWN.

Daily Cost: \$0

Cum. Cost: \$224

**Sep 8, 2021 Wednesday Day 3**

TAG CEMENT @ 4941. SPOT 30 SX CLASS FROM 4654' TO 4475'. WOC. RIH TAG CEMENT 4487', POOH 53 STANDS. RIH WITH 7" PACKER TO 3150', PRESSURE UP CSG TO 500#. TESTED GOOD. POOH 7" PACKER, RIH WITH OPEN TUBING TO 3550'. SPOT 35 SX OF CLASS C NEAT CEMENT FROM 3550' TO CTOC 3341'. POOH WITH 25 STANDS. SDFN.

Daily Cost: \$0

Cum. Cost: \$224

**Sep 9, 2021 Thursday Day 4**

RIH AND TAG CEMENT @ 3327, POOH WITH 29 STANDS. WOC. PERFORATE @ 1850', RIH WITH 7" PACKER TO 1500'. PRESSURE UP TO 500#. POOH WITH PACKER, RIH WITH OPEN ENDED TUBING TO 1900'. SPOT 35 SX OF CLASS C NEAT CEMENT FROM 1900' TO CTOC 1691'. POOH WITH TUBING. WOC. RIH AND TAG CEMENT @ 1712', POOH WITH TUBING. PERFORATE @ 1500', RIH WITH 7" PACKER TO 1150' AND PRESSURE UP TO 500#. POOH WITH PACKER, RIH WITH OPEN ENDED TUBING TO 1550'. SPOT 35 SX OG CLASS C NEAT CEMENT FROM 1550' TO CTOC 1341. POOH WITH TUBING. SDFN

Daily Cost: \$0

Cum. Cost: \$224

**Sep 10, 2021 Friday Day 5**

RIH AND TAG CEMENT @ 1332'. POOH WITH 8 STANDS. RIH AND PERFORATE @ 460'. RIH WITH 7" PACKER AND PRESURE UP THE CSG TO 500#. RIH OPEN ENDED TUBING TO 510'. SPOT 35 SX OF CLASS C NEAT CEMENT FROM 501' TO CTOC 301'. POOH WOC. RIH AND TAG CEMENT @ 297'. PERFORATE @ 200'. SQ 80 SX OF CLASS C NEAT CEMENT FROM 200' TO SURFACE. RDMO.

Daily Cost: \$55,400

Cum. Cost: \$55,624

## Legacy Reserves

Daily Operations Report  
(Selected Days Only)

9/1/2021 thru 9/30/2021

Page 2

Printed 10/13/2021

---

---

Report Based On:

Date Range: 9/1/2021 through 9/30/2021

Wells selected based on the following Report Menu selections:

Wells = South Justis Unit # F18.

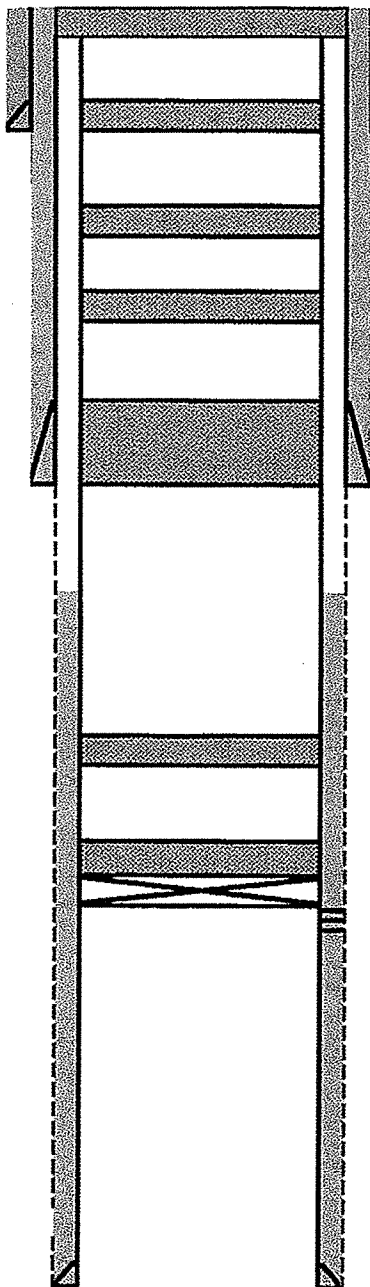
# Legacy

Author: Abby-BCM & Associates, Inc  
Well Name: South Justis Unit  
Field/Pool: Justis; Binbry, Tubb, Drkd  
County: Lea  
State: New Mexico  
Spud Date:

Well No. #F18  
API #: 30-025-11565  
Location: Sec 13. T25S, R37E  
660' FSL & 1980' FEL  
GL: 3191

Description	O.D.	Grade	Weight	Depth	Hole	Cmt Sx	TOC
Surface Csg	13 7/8			410	17 1/2	500	0
Inter Csg	9 5/8			3,449	12 1/4	2,200	0
Prod Csg	7			8,230	7 7/8	1,250	3,610

FORMATIONS	
T/Salt	1453
B/Salt	1783
Glorieta	4604
Drinkard	5900
Tubbs	5620



5. Perf'd @ 200'. ND BOP, flanged up well. Sqz'd 80 sx class C cmt @ 200' to surface.

13 7/8 0 CSG @ 410

4. Perf'd @ 460'. Pressured up on perfs to 500 PSI. Spotted 35 sx class C cmt @ 501-301'. WOC. Tagged plug @ 297'.

3. Perf'd @ 1500'. Pressured up on perfs to 500 PSI. Spotted 35 sx class C cmt @ 1550-1341'. WOC & Tagged plug @ 1332'.

4. Perf'd @ 1850'. Pressured up on perfs to 500 PSI. Spotted 35

9 5/8 0 CSG @ 3,449

3. Perf'd @ 3500'. Pressured up to 500 PSI. Spotted 35 sx class C cmt @ 3550-3341'. Tagged plug @ 3327'.

2. Spotted 30 sx class C cmt @ 4654-4475'. WOC. Tagged plug @ 4487'.

1.  
Cmt

Perfs @ 4970-7730'

7 0 CSG @ 8,230



# Wellbore Schematic

Printed: 12/4/2020

Page 11

South Justis Unit # F18

BOLO ID: 300054.47.02

API # 3002511565

South Justis Unit # F18, 12/4/2020

660 FSL & 1960 FEL	GL Elev: 3,191.00	KOP:	
Section 13, Township 25S, Range 37E		EOC:	
County, State: Lea, NM		Fill Depth:	5,827
Aux ID: 15440		PSTD:	
'KB' correction: 12; All Depths Corr To:		TD:	8,264.00
		BOP:	

## Hole Size

Diameter	Top At	Btm At	Date Drilled
17.5000	0.00	410.00	9/8/1957
12.2500	410.00	3,449.00	
8.7500	3,449.00	8,230.00	

## Surface Casing

Description	#	Diameter	Weight	Grade	Length	Top At	Btm At
Casing		13.3750			410.00	12.00	422.00

Date Ran: 7/29/2010

## Intermediate Casing

Description	#	Diameter	Weight	Grade	Length	Top At	Btm At
Casing		9.6250			3,449.00	12.00	3,461.00

Date Ran: 7/29/2010

## Production Casing

Description	#	Diameter	Weight	Grade	Length	Top At	Btm At
Casing		7.0000			8,230.00	12.00	8,242.00

Date Ran: 7/29/2010

## Cement

Top At	Btm At	ID	OD	TOC Per	# - Type	# Sz	Class	Wt.
0.00	410.00	13.375	17.500		Circ 10	500		
0.00	3,449.00	9.625	12.250		Circ 20	2200		
3,610.00	8,230.00	7.000	8.750		TS 30	1250		
7,168.00	7,175.00	0.000	7.000		40			

## Zone and Perfs

### BLINEBRY

### Comments / Completion Summary

Tested Safety Anchors 05/31/2007

### Perforations

Top	Bottom	Formation	Status	Opened	Closed	# / Ft	TH #
5,134.00	5,547.00	Blinebry	PA				
5,458.00	5,549.00	Blinebry	PA				
5,832.00	6,084.00	Drinkard	PA				
5,900.00	5,957.00	Drinkard	PA				
5,995.00	5,800.00	Blinebry-Tubb/Drinkard	A				
6,718.00	6,756.00	FUSSELMAN	PA				
7,768.00	7,871.00	McKee	PA				
8,220.00	6,245.00	Eilenburger	PA				

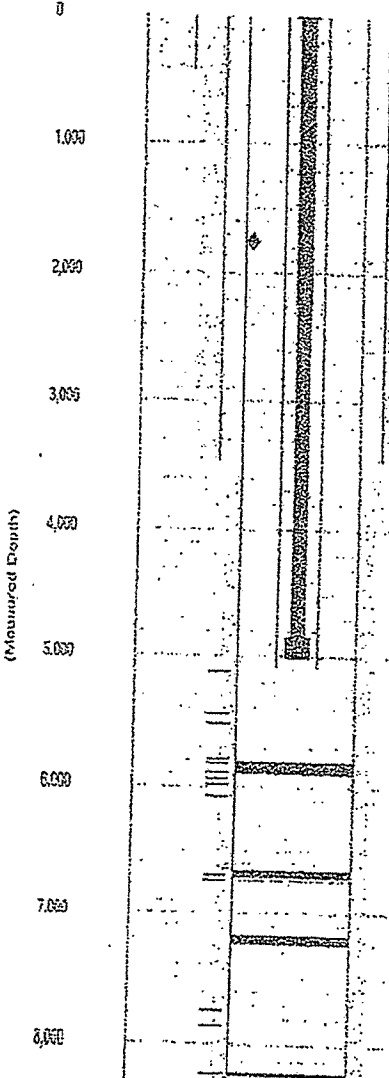
### Wellbore Plugs and Junk

Top	Bottom	Type	Diameter	Solid	Date
5,810.00	5,900.00	CIBP	7.000	Yes	
6,660.00	6,748.00	CIBP	7.000	Yes	
6,738.00	6,740.00	RBP	7.000	Yes	
7,175.00	7,250.00	CIBP	7.000	Yes	
8,200.00	8,220.00	CIBP	7.000	Yes	

### Tubing

Description	#	Diameter	Weight	Grade	Length	Top At	Btm At
Tubing	151	2.3750		J55	4,714.90	12.00	4,726.90
Tubing Anchor	1	7.0000			2.80	4,726.90	4,729.70
Tubing	8	2.3750		J55	247.00	4,729.70	4,976.70
Tubing	2	2.3750		IPC	65.00	4,976.70	5,041.70
Seat Nipple	1	2.3750			1.10	5,041.70	5,042.80
Perf Nipple	1	2.3750			4.10	5,042.80	5,046.90

Date Ran: 1/23/2018



Glorieta = 4604  
Drinkard = 5900  
Tubbs = 5620  
TKalt = 1453 1/2  
B/Salt = 1783 1/2  
= Fluid Level with Gas  
= Not Fluid Level

32.1248627

103.118782

**Legacy Reserves**Daily Operations Report  
(Selected Days Only)

9/1/2021 thru 9/30/2021

Page 1

Printed 10/13/2021

**South Justis Unit # F18**

Lea Co., NM

Event Date: 9/3/2021

BOLO ID: 300054.47.02

P/A

**Sep 3, 2021 Friday Day 1**

RIH WITH GAUGE RING, COULD NOT GET PAST 1000' POOH WITH GAUGE RING. LEFT GAUGE RING IN THE HOLE. SDFWE

Daily Cost: \$224

Cum. Cost: \$224

**Sep 7, 2021 Tuesday Day 2**

RIH WITH OPEN ENDED TUBING AND TAG 5750'. POOH WITH 75 STANDS, RIH WITH 7" CIBP TO 5085'. SET CIBP 5085, CIRV 200 BBL OF MLF PRESSURE TESTING CSG. DID NOT HOLD PRESSURE. SPOT 25 SX OF CLASS C NEAT CEMENT FROM 5085' TO CTOC 4936'. POOH 12 STANDS, CLOSE WELL SHUTDOWN.

Daily Cost: \$0

Cum. Cost: \$224

**Sep 8, 2021 Wednesday Day 3**

TAG CEMENT @ 4941. SPOT 30 SX CLASS FROM 4654' TO 4475'. WOC. RIH TAG CEMENT 4487', POOH 53 STANDS. RIH WITH 7" PACKER TO 3150', PRESSURE UP CSG TO 500#. TESTED GOOD. POOH 7" PACKER, RIH WITH OPEN TUBING TO 3550'. SPOT 35 SX OF CLASS C NEAT CEMENT FROM 3550' TO CTOC 3341'. POOH WITH 25 STANDS. SDFN.

Daily Cost: \$0

Cum. Cost: \$224

**Sep 9, 2021 Thursday Day 4**

RIH AND TAG CEMENT @ 3327, POOH WITH 29 STANDS. WOC. PERFORATE @ 1850', RIH WITH 7" PACKER TO 1500'. PRESSURE UP TO 500#. POOH WITH PACKER, RIH WITH OPEN ENDED TUBING TO 1900'. SPOT 35 SX OF CLASS C NEAT CEMENT FROM 1900' TO CTOC 1691'. POOH WITH TUBING. WOC. RIH AND TAG CEMENT @ 1712', POOH WITH TUBING. PERFORATE @ 1500', RIH WITH 7" PACKER TO 1150' AND PRESSURE UP TO 500#. POOH WITH PACKER, RIH WITH OPEN ENDED TUBING TO 1550'. SPOT 35 SX OG CLASS C NEAT CEMENT FROM 1550' TO CTOC 1341. POOH WITH TUBING. SDFN

Daily Cost: \$0

Cum. Cost: \$224

**Sep 10, 2021 Friday Day 5**

RIH AND TAG CEMENT @ 1332'. POOH WITH 8 STANDS. RIH AND PERFORATE @ 460'. RIH WITH 7" PACKER AND PRESURE UP THE CSG TO 500#. RIH OPEN ENDED TUBING TO 510'. SPOT 35 SX OF CLASS C NEAT CEMENT FROM 501' TO CTOC 301'. POOH WOC. RIH AND TAG CEMENT @ 297'. PERFORATE @ 200'. SQ 80 SX OF CLASS C NEAT CEMENT FROM 200' TO SURFACE. RDMO.

Daily Cost: \$55,400

Cum. Cost: \$55,624

## Legacy Reserves

Daily Operations Report  
(Selected Days Only)

9/1/2021 thru 9/30/2021

Page 2

Printed 10/13/2021

---

---

Report Based On:

Date Range: 9/1/2021 through 9/30/2021

Wells selected based on the following Report Menu selections:

Wells = South Justis Unit # F18.

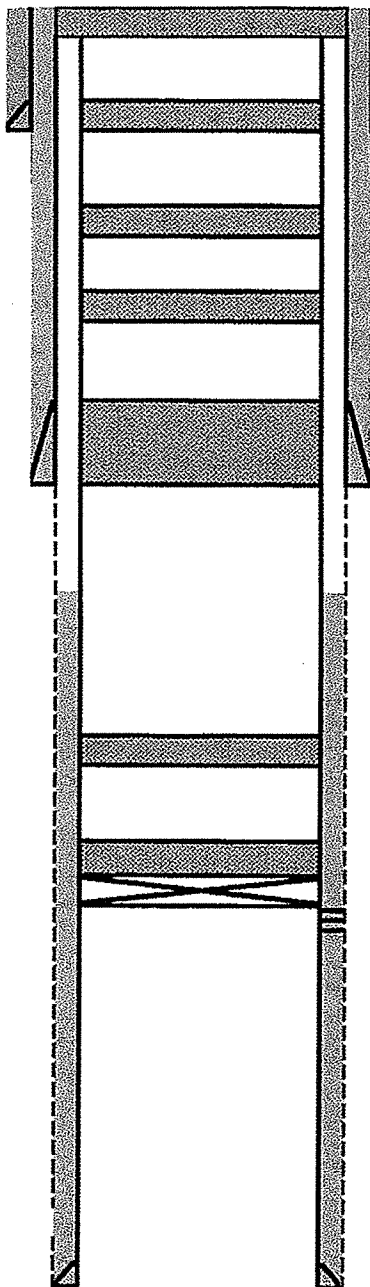
# Legacy

Author: Abby-BCM & Associates, Inc  
Well Name: South Justis Unit  
Field/Pool: Justis; Binbry, Tubb, Drkd  
County: Lea  
State: New Mexico  
Spud Date:

Well No. #F18  
API #: 30-025-11565  
Location: Sec 13. T25S, R37E  
660' FSL & 1980' FEL  
GL: 3191

Description	O.D.	Grade	Weight	Depth	Hole	Cmt Sx	TOC
Surface Csg	13 7/8			410	17 1/2	500	0
Inter Csg	9 5/8			3,449	12 1/4	2,200	0
Prod Csg	7			8,230	7 7/8	1,250	3,610

FORMATIONS	
T/Salt	1453
B/Salt	1783
Glorieta	4604
Drinkard	5900
Tubbs	5620



5. Perf'd @ 200'. ND BOP, flanged up well. Sqz'd 80 sx class C cmt @ 200' to surface.

13 7/8 0 CSG @ 410

4. Perf'd @ 460'. Pressured up on perfs to 500 PSI. Spotted 35 sx class C cmt @ 501-301'. WOC. Tagged plug @ 297'.

3. Perf'd @ 1500'. Pressured up on perfs to 500 PSI. Spotted 35 sx class C cmt @ 1550-1341'. WOC & Tagged plug @ 1332'.

4. Perf'd @ 1850'. Pressured up on perfs to 500 PSI. Spotted 35

9 5/8 0 CSG @ 3,449

3. Perf'd @ 3500'. Pressured up to 500 PSI. Spotted 35 sx class C cmt @ 3550-3341'. Tagged plug @ 3327'.

2. Spotted 30 sx class C cmt @ 4654-4475'. WOC. Tagged plug @ 4487'.

1.  
Cmt

Perfs @ 4970-7730'

7 0 CSG @ 8,230



# Wellbore Schematic

Printed: 12/4/2020

South Justis Unit # F18

BOLO ID: 300054.47.02

API # 3002511565

South Justis Unit # F18, 12/4/2020

660 FSL & 1960 FEL	GL Elev: 3,191.00	KOP:	
Section 13, Township 25S, Range 37E		EOC:	
County, State: Lea, NM		Fill Depth:	5,827
Aux ID: 15440		PSTD:	
'KB' correction: 12; All Depths Corr To:		TD:	8,264.00
		BOP:	

Hole Size			
Diameter	Top At	Btm At	Date Drilled
17.5000	0.00	410.00	9/8/1957
12.2500	410.00	3,449.00	
8.7500	3,449.00	8,230.00	

Surface Casing							
Description	#	Diameter	Weight	Grade	Length	Top At	Btm At
Casing		13.3750			410.00	12.00	422.00

Date Ran: 7/29/2010

Intermediate Casing							
Description	#	Diameter	Weight	Grade	Length	Top At	Btm At
Casing		9.6250			3,449.00	12.00	3,461.00

Date Ran: 7/29/2010

Production Casing							
Description	#	Diameter	Weight	Grade	Length	Top At	Btm At
Casing		7.0000			8,230.00	12.00	8,242.00

Date Ran: 7/29/2010

Cement									
Top At	Btm At	ID	OD	TOC Per	# - Type	# Sz	Class	Wt	
0.00	410.00	13.375	17.500		Circ 10	500			
0.00	3,449.00	9.625	12.250		Circ 20	2200			
3,610.00	8,230.00	7.000	8.750		TS 30	1250			
7,168.00	7,175.00	0.000	7.000		40				

## Zone and Perfs

BLINEBRY

## Comments / Completion Summary

Tested Safety Anchors 05/31/2007

## Perforations

Top	Bottom	Formation	Status	Opened	Closed	# / Ft	TH #
5,134.00	5,547.00	Blinbry	PA				
5,458.00	5,549.00	Blinbry	PA				
5,832.00	6,084.00	Drinkard	PA				
5,900.00	5,957.00	Drinkard	PA				
5,995.00	5,800.00	Blinbry-Tubb/Drinkard	A				
6,718.00	6,756.00	FUSSELMAN	PA				
7,768.00	7,871.00	McKee	PA				
8,220.00	6,245.00	Eilenburger	PA				

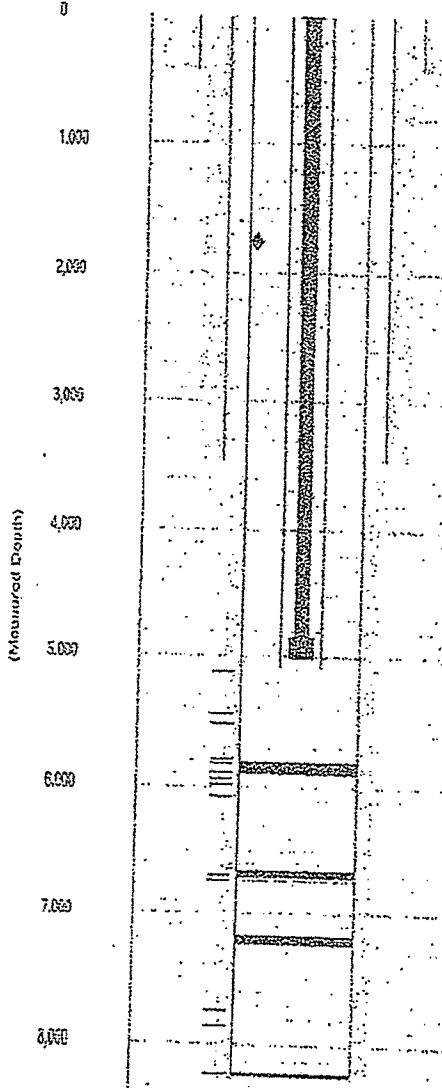
## Wellbore Plugs and Junk

Top	Bottom	Type	Diameter	Solid	Date
5,810.00	5,900.00	CIBP	7.000	Yes	
6,660.00	6,748.00	CIBP	7.000	Yes	
6,738.00	6,740.00	RBP	7.000	Yes	
7,175.00	7,250.00	CIBP	7.000	Yes	
8,200.00	8,220.00	CIBP	7.000	Yes	

## Tubing

Description	#	Diameter	Weight	Grade	Length	Top At	Btm At
Tubing	151	2.3750		J55	4,714.90	12.00	4,726.90
Tubing Anchor	1	7.0000			2.80	4,726.90	4,729.70
Tubing	8	2.3750		J55	247.00	4,729.70	4,976.70
Tubing	2	2.3750		IPC	65.00	4,976.70	5,041.70
Seat Nipple	1	2.3750			1.10	5,041.70	5,042.80
Perf Nipple	1	2.3750			4.10	5,042.80	5,046.90

Date Ran: 1/23/2018



Glorieta = 4604  
Drinkard = 5900  
Tubbs = 5620  
TKalt = 1453 1/2  
B/Salt = 1783 1/2  
= Fluid Level with Gas  
= Not Fluid Level

32.1248627

103.118782

**District I**

1625 N. French Dr., Hobbs, NM 88240  
Phone:(575) 393-6161 Fax:(575) 393-0720

**District II**

811 S. First St., Artesia, NM 88210  
Phone:(575) 748-1283 Fax:(575) 748-9720

**District III**

1000 Rio Brazos Rd., Aztec, NM 87410  
Phone:(505) 334-6178 Fax:(505) 334-6170

**District IV**

1220 S. St Francis Dr., Santa Fe, NM 87505  
Phone:(505) 476-3470 Fax:(505) 476-3462

**State of New Mexico**  
**Energy, Minerals and Natural Resources**  
**Oil Conservation Division**  
**1220 S. St Francis Dr.**  
**Santa Fe, NM 87505**

CONDITIONS

Action 55774

**CONDITIONS**

Operator: LEGACY RESERVES OPERATING, LP 15 Smith Road Midland, TX 79705	OGRID: 240974
	Action Number: 55774
	Action Type: [C-103] Sub. Plugging (C-103P)

**CONDITIONS**

Created By	Condition	Condition Date
kfortner	None	12/14/2021