

Office
District I - (575) 393-6161
1625 N. French Dr., Hobbs, NM 88240
District II - (575) 748-1283
811 S. First St., Artesia, NM 88210
District III - (505) 334-6178
1000 Rio Brazos Rd., Aztec, NM 87410
District IV - (505) 476-3460
1220 S. St. Francis Dr., Santa Fe, NM 87505

State of New Mexico
Energy, Minerals and Natural Resources

Form C-103
Revised July 18, 2013

OIL CONSERVATION DIVISION
1220 South St. Francis Dr.
Santa Fe, NM 87505

WELL API NO. 30-015-38076
5. Indicate Type of Lease STATE [X] FEE []
6. State Oil & Gas Lease No.
7. Lease Name or Unit Agreement Name MCCOY STATE
8. Well Number 004
9. OGRID Number 328947
10. Pool name or Wildcat EMPIRE; GLORIETA-YESO, EAST
11. Elevation (Show whether DR, RKB, RT, GR, etc.) 3606' GR

SUNDRY NOTICES AND REPORTS ON WELLS
(DO NOT USE THIS FORM FOR PROPOSALS TO DRILL OR TO DEEPEN OR PLUG BACK TO A DIFFERENT RESERVOIR. USE "APPLICATION FOR PERMIT" (FORM C-101) FOR SUCH PROPOSALS.)
1. Type of Well: Oil Well [X] Gas Well [] Other []
2. Name of Operator SPUR ENERGY PARTNERS LLC
3. Address of Operator 9655 KATY FREEWAY, SUITE 500, HOUSTON, TX 77024
4. Well Location Unit Letter I : 2310 feet from the SOUTH line and 425 feet from the EAST line
Section 8 Township 17S Range 29E NMPM EDDY County

12. Check Appropriate Box to Indicate Nature of Notice, Report or Other Data

NOTICE OF INTENTION TO:
PERFORM REMEDIAL WORK [] PLUG AND ABANDON []
TEMPORARILY ABANDON [X] CHANGE PLANS []
PULL OR ALTER CASING [] MULTIPLE COMPL []
DOWNHOLE COMMINGLE []
CLOSED-LOOP SYSTEM []
OTHER: []
SUBSEQUENT REPORT OF:
REMEDIAL WORK [] ALTERING CASING []
COMMENCE DRILLING OPNS. [] P AND A []
CASING/CEMENT JOB []
OTHER: []

13. Describe proposed or completed operations. (Clearly state all pertinent details, and give pertinent dates, including estimated date of starting any proposed work). SEE RULE 19.15.7.14 NMAC. For Multiple Completions: Attach wellbore diagram of proposed completion or recompletion.

Spur Energy Partners LLC respectfully requests to run an MIT and put this well in TA status.

- 1. MIRU KILL TRUCK.
2. LOAD PROD CSG W/ FW TREATED W/ 5 GALS BIOCIDE PER 130 BBLS FW.
3. PRESSURE TEST CSG TO 500 PSI FOR 30 MINUTES AND RECORD CHART PER 19.15.25.14 NMAC.
4. RDMO KILL TRUCK.

NOTE : CIBP has only 10 sx cmt

TA status may be granted after a successful MIT test is performed. Contact the OCD to schedule the test so it may be witnessed.

Spud Date: 10/018/2010

Rig Release Date: 10/26/2010

I hereby certify that the information above is true and complete to the best of my knowledge and belief.

SIGNATURE Sarah Chapman TITLE REGULATORY DIRECTOR DATE 07/09/2021

Type or print name SARAH CHAPMAN E-mail address: SCHAPMAN@SPUREPLLC.COM PHONE: 832-930-8613
For State Use Only

APPROVED BY: [Signature] TITLE Staff Manager DATE 12/14/2021
Conditions of Approval (if any):

CANRIG

Daily Wellbore Schematics Report

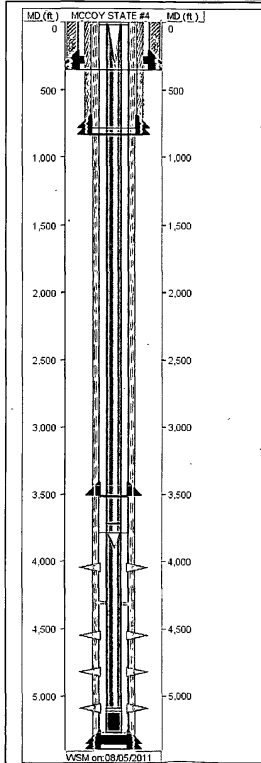
1

Well ID: 30-015-38076

Well Name: MCCOY STATE #4

Event#: 4.00

Report Dates: 08/05/2011



PIPE SPECIFICATION

STRING NAME	SECTION NAME	JOINT COUNT	START DEPTH	END DEPTH	LENGTH	OD SIZE	ID SIZE	WT GRDNT	GRD	CONN
SURFACE	GUIDE SHOE		348.83	350.00	1.17	14.38				8RD.
SURFACE	CASING	1	304.95	348.83	43.88	13.38	12.71	48.0	H-40	8RD.
SURFACE	FLOAT COLLAR		304.95	304.95	0.00	14.38				8RD.
SURFACE	CASING	7	-4.87	304.95	309.82	13.38	12.71	48.0	H-40	8RD.
PRODUCTION	GUIDE SHOE		5390.93	5392.13	1.20	6.05				8RD.
PRODUCTION	CASING	1	5354.05	5390.93	36.88	5.50	4.89	17.0	J-55	8RD.
PRODUCTION	FLOAT COLLAR		5352.75	5354.05	1.30	6.05				8RD.
PRODUCTION	CASING	43	3521.19	5352.75	1831.56	5.50	4.89	17.0	J-55	8RD.
PRODUCTION	MARKER JOINT	1	3506.56	3521.19	14.63	5.50	4.89	17.0	J-55	8RD.
PRODUCTION	CASING	83	17.00	3506.56	3489.56	5.50	4.89	17.0	J-55	8RD/L
PRODUCTION	LANDING JOINT	1	-4.34	17.00	21.34	5.50	4.89	17.0	J-55	8RD.
TUBING	BULL PLUG		5271.02	5271.72	0.70	2.88	2.44			j55 8rd
TUBING	MUD ANCHOR	5	5110.47	5271.02	160.55	2.88	2.44	6.5		j55 8rd
TUBING	DESANDER		5091.19	5110.47	19.28	2.88	2.44	6.5		j55 8rd
TUBING	SEAT NIPLE		5090.09	5091.19	1.10	2.88	1.90			j55 8rd
TUBING	TUBING	40	3788.54	5090.09	1301.55	2.88	2.44	6.5		j55 8rd
TUBING	TUBING ANCHOR		3785.84	3788.54	2.70	5.50	2.44			j55 8rd
TUBING	TUBING	2	3720.80	3785.84	65.04	2.88	2.44	6.5		j55 8rd
TUBING	MARKER JOINT		3718.68	3720.80	2.12	2.88	2.44	6.5		j55 8rd
TUBING	TUBING	114	12.00	3718.68	3706.68	2.88	2.44	6.5		j55 8rd
TUBING	KB		0.00	12.00	12.00					
INTERMEDIATE	GUIDE SHOE		832.00	833.00	1.00	9.63				8RD.
INTERMEDIATE	CASING	1	785.42	832.00	46.58	8.63	8.10	24.0	J-55	8RD.
INTERMEDIATE	FLOAT COLLAR		784.02	785.42	1.40	9.63				8RD.
INTERMEDIATE	CASING	17	18.68	784.02	787.47	8.63	8.10	24.0	J-55	8RD.

CEMENTING

STRING NAME	STAGE #	LEAD TOP (est) (ft)	LEAD TOP (ver) (ft)	TAIL TOP (est) (ft)	TAIL TOP (ver) (ft)
SURFACE	1			0.0	0.0
PRODUCTION	1	0.0	0.0	2275.0	
INTERMEDIATE	1	0.0	0.0	657.0	

BHA STRING

DRILL EQUIP CODE	DESCRIPTION	LENGTH	OD SIZE	ID SIZE

PERFORATION

ZONE	JOB REPORT DATE	ZONE NAME	TOP DEPTH	BOTTOM DEPTH	HOLE SIZE	PEN SIZE	SQUEEZED
1	11/13/2010	LOWER BLINEBRY	4990.00	5190.00	0.34	25.00	
2	11/16/2010	MIDDLE BLINEBRY	4720.00	4920.00	0.34	25.00	

RECEIVED
AUG 18 2011
NMCD ARTESIA

PERFORATION							
ZONE	JOB REPORT DATE	ZONE NAME	TOP DEPTH	BOTTOM DEPTH	HOLE SIZE	PEN SIZE	SQUEEZED
3	11/16/2010	UPPER BLINEBRY	4450.00	4650.00	0.34	25.00	
4	07/22/2011	PADDOCK	3846.00	4250.00	0.25	22.40	N

API #	30-015-38076	McCoy State #4	County, ST	Eddy County, NM
Operator	Spur Energy Partners		Sec-Twn-Rng	8-17S-29E
Field	Empire; Glorieta-Yeso, East		Footage	2310 FSL 425 FEL
Spud Date	10/18/2010		Survey	32.8482513, -104.0898056

Formation (MD)	
San Andres	
Glorieta	
Yeso	
Bone Spring	
Wolfcamp	
Canyon	
Strawn	
Atoka	
Morrow	

RKB	17
GL	

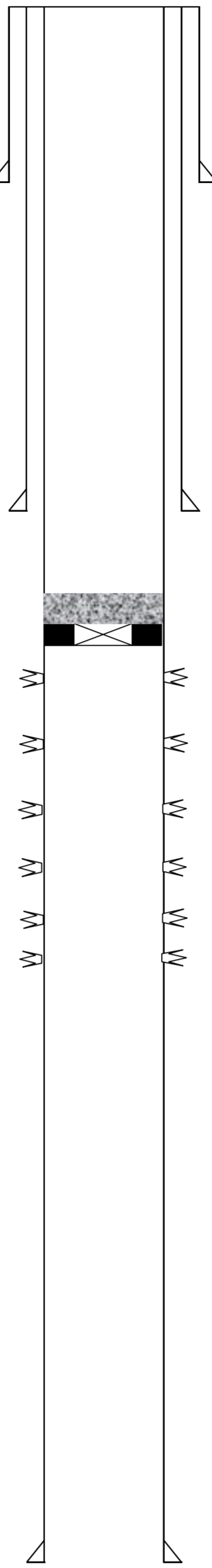
Hole Size	17-1/2"
TOC	Surf
Method	Circulate

Csg Depth	350'
Size	13-3/8"
Weight	48
Grade	H40
Connections	STC
Cement	400 sx

Hole Size	11"
TOC	Surf
Method	Circulate

Csg Depth	833'
Size	8-5/8"
Weight	24
Grade	J55
Connections	STC
Cement	400 sx

Well History



CIBP @ 3896' w/ 10 sx of cement on top

Perforations
 4990'-5190'
 4720'-4920'
 4450'-4650'
 3946'-4250'

Proposed Tbg Detail				
Jts	Size	Depth	Length	Detail

Proposed Rod Detail				
Rods	Size	Depth	Length	Guides Detail

Hole Size	7-7/8"
TOC	Surf
Method	Circulate

Csg Depth	5392'
Size	5-1/2"
Weight	17
Grade	J55
Connections	LTC
Cement	900 sx

Last Update	7/9/2021
By	RCB

PBTD	3896'
TD MD	5392'
TD TVD	5392'

District I
 1625 N. French Dr., Hobbs, NM 88240
 Phone:(575) 393-6161 Fax:(575) 393-0720

District II
 811 S. First St., Artesia, NM 88210
 Phone:(575) 748-1283 Fax:(575) 748-9720

District III
 1000 Rio Brazos Rd., Aztec, NM 87410
 Phone:(505) 334-6178 Fax:(505) 334-6170

District IV
 1220 S. St Francis Dr., Santa Fe, NM 87505
 Phone:(505) 476-3470 Fax:(505) 476-3462

State of New Mexico
Energy, Minerals and Natural Resources
Oil Conservation Division
1220 S. St Francis Dr.
Santa Fe, NM 87505

CONDITIONS
 Action 35826

CONDITIONS

Operator: Spur Energy Partners LLC 9655 Katy Freeway Houston, TX 77024	OGRID: 328947
	Action Number: 35826
	Action Type: [C-103] NOI Temporary Abandonment (C-103I)

CONDITIONS

Created By	Condition	Condition Date
gcordero	None	12/14/2021