

Office
 District I – (575) 393-6161
 1625 N. French Dr., Hobbs, NM 88240
 District II – (575) 748-1283
 811 S. First St., Artesia, NM 88210
 District III – (505) 334-6178
 1000 Rio Brazos Rd., Aztec, NM 87410
 District IV – (505) 476-3460
 1220 S. St. Francis Dr., Santa Fe, NM
 87505

State of New Mexico
 Energy, Minerals and Natural Resources

Form C-103
 Revised July 18, 2013

OIL CONSERVATION DIVISION
 1220 South St. Francis Dr.
 Santa Fe, NM 87505

WELL API NO. 30-045-30623
5. Indicate Type of Lease STATE <input checked="" type="checkbox"/> FEE <input type="checkbox"/>
6. State Oil & Gas Lease No. B-10603-47
7. Lease Name or Unit Agreement Name State Com N
8. Well Number 10F
9. OGRID Number 372171
10. Pool name or Wildcat Basin Dakota

SUNDRY NOTICES AND REPORTS ON WELLS (DO NOT USE THIS FORM FOR PROPOSALS TO DRILL OR TO DEEPEN OR PLUG BACK TO A DIFFERENT RESERVOIR. USE "APPLICATION FOR PERMIT" (FORM C-101) FOR SUCH PROPOSALS.)	
1. Type of Well: Oil Well <input type="checkbox"/> Gas Well <input checked="" type="checkbox"/> Other	
2. Name of Operator HILCORP ENERGY COMPANY	
3. Address of Operator 382 Road 3100, Aztec, NM 87410	
4. Well Location Unit Letter <u>N</u> : <u>1095</u> feet from the <u>South</u> line and <u>1915</u> feet from the <u>West</u> line Section <u>02</u> Township <u>29N</u> Range <u>08W</u> NMPM San Juan County	
11. Elevation (Show whether DR, RKB, RT, GR, etc.) 6248' GR	

12. Check Appropriate Box to Indicate Nature of Notice, Report or Other Data

NOTICE OF INTENTION TO: PERFORM REMEDIAL WORK <input type="checkbox"/> PLUG AND ABANDON <input type="checkbox"/> TEMPORARILY ABANDON <input type="checkbox"/> CHANGE PLANS <input type="checkbox"/> PULL OR ALTER CASING <input type="checkbox"/> MULTIPLE COMPL <input type="checkbox"/> DOWNHOLE COMMINGLE <input type="checkbox"/> CLOSED-LOOP SYSTEM <input type="checkbox"/> OTHER: <input type="checkbox"/>		SUBSEQUENT REPORT OF: REMEDIAL WORK <input type="checkbox"/> ALTERING CASING <input type="checkbox"/> COMMENCE DRILLING OPNS. <input type="checkbox"/> P AND A <input checked="" type="checkbox"/> CASING/CEMENT JOB <input type="checkbox"/> OTHER: <input type="checkbox"/>	
--	--	--	--

13. Describe proposed or completed operations. (Clearly state all pertinent details, and give pertinent dates, including estimated date of starting any proposed work). SEE RULE 19.15.7.14 NMAC. For Multiple Completions: Attach wellbore diagram of proposed completion or recompletion.

This well was P&A'd on 12/1/2021.

10/16/2021: MIRU. CK WELL PRESSURES (SICP: 120 PSI, SITP: 120 PSI, SIICP: 0 PSI, SIBHP: 0 PSI). ND WH. NU BPO & PT, GOOD TST. PULL TBG HANGER, RIH W/ 4 JTS, TAG FILL @ 7460, PBTD @ 7503' (43' OF FILL), LD 4 JTS, RIG UP PREMIER NDT SERVICES, POOH W/15 STDS (30 JTS), SUDDENLY LOST TBG WEIGHT, FROM 30K TO 8K, CONTINUE TO PULL & SCAN TBG, LD 26) RED TBG JTS, PLUS PARTED RED JT, WAIT ON FISHING TOOLS, PICK & MU FISHING TOOLS, RIH, TAG TOF @ 2043', LATCH ON TO FISH, 1K OVER STRING WEIGHT, POOH, RECOVER 7 TBG JTS (**RUN #1**), SISW.

10/17/2021: CK WELL PRESSURES (SICP: 180 PSI, SITP: N/A PSI, SIICP: 0 PSI, SIBHP: 0 PSI). PICK AND MU 3-7/8" OVERSHOT W/3-1/16" SPIRAL GRAPPLE, RIH W/2-3/8" WORK STRING, TOF @ 2261', LATCH ON TO FISH, POOH, RECOVER 11) TBG JTS (**RUN #2**), CORKSCREW & SHARP BEND RIGHT ABOVE COUPLING, RIH W/SAME SET UP FOR FISHING TOOLS, FISH TOP @ 2605', WORK OVER FISH TOP, POOH, OVERSHOT EMPTY (**RUN #3**), RIH W/SAME SET UP, ADD 3' EXTENSION, FISH TOP @ 2605', POOH, OVERSHOT EMPTY, (**RUN #4**). RIH W/3-7/8" CONCAVE MILL, NU POWER SWIVEL, PMP H2O DWN TBG, SLOW RATE, DRESS FISH TOP 3-4", STOP MILLING, ND POWER SWIVEL, POOH, LD CONCAVE MILL, RIH W/3-7/8" OVER SHOT, 3-1/16" SPIRAL GRAPPLE, FISH TOP @ 2605', WORK OVER FISH TOP, PULL 45K, SLIPPED OFF, DOWN LATCH ON TO FISH, PULL INTERVALS OF 10K UP TO 50K, LEFT PULL ON OVER NIGHT (**RUN #5**). SISW.

I hereby certify that the information above is true and complete to the best of my knowledge and belief.

SIGNATURE  TITLE Operations/Regulatory Technician – Sr. DATE 12/7/2021

Type or print name Amanda Walker E-mail address: mwalker@hilcorp.com PHONE: (346) 237-2177

For State Use Only

APPROVED BY:  TITLE Deputy Oil and Gas Inspector DATE 12/29/2021

Conditions of Approval (if any):

P&A SR
B-10603-47

10/18/2021: CK WELL PRESSURES (SICP: 0 PSI, SITP: N/A PSI, SIICP: 0 PSI, SIBHP: 0 PSI). WORK PIPE FROM 40K TO 60K, FISH PARTED, POOH, RECOVER 2 JTS, BOTTOM JT PARTED 6" ABV COUPLING, CLEAN/SMOOTH BRAKE, WAIT ON HR ON WIRELINE GROUP, RIG UP E-LINE, RIH W/SINKER BAR, CCL, FISH TOP WM AT 2624' SOLID TAG @ 2664', POOH, LAY DOWN TOOLS, RIH W/CCL/JET CUTTER, SOLID TAG AT 2664, POOH, LD TOOLS, RIH W/JET CUTTER, SAME RESULTS, NO PROGRESS MADE, POOH, RD WIRELINE GROUP, PICK & MAKE UP 3-3/4" OVERSHOT W/3-1/16" SPIRAL GRAPPLE, RIH W/3-1/8" 6) DRILL COLLARS, JARS, X-OVER AND 2-3/8" WORK STRING, TOP OF FISH @ 2667', ENGAGE FISH, JAR ON STUCK FISH MAX PULL 50K, FISH PARTED, 4K OVER STRING WEIGHT, POOH W/30 STDS (**RUN #6**). SISW.

10/19/2021: CK WELL PRESSURES (SICP: 200 PSI, SITP: N/A PSI, SIICP: 0 PSI, SIBHP: 0 PSI). FINISH POOH W/FISHING TOOLS, RECOVER 1) PARTED JT, LD, RIH W/FISHING TOOLS, OVERSHOT, SPIRAL GRAPPLE, ON BOTTOM, DC'S, JARS, FISH TOP AT 2691', WORK & ENGAGE FISH, PULL 30K, FISH MOVE UP HOLE, POOH, OVERSHOT EMPTY (**RUN #7**), RIH WITH CONCAVE MILL, FISH TOP @ 2691', NU POWER SWIVEL, DRESS FISH TOP 2-3", ND POWER SWIVEL, POOH, LAY DOWN CONCAVE MILL, PICK & MU 3-3/4" OVERSHOT W/3-1/16" SPIRAL GRAPPLE, RIH W/3-1/8" 6) DRILL COLLARS, JARS, X-OVER & 2-3/8" WORK STRING, TOF @ 2691', ATTEMPTED TO ENGAGE FISH, NO PROGRESS MADE, POOH, OVER SHOT EMPTY (**RUN #8**). SISW.

10/20/2021: PU WASH PIPE, T-DOG, DC'S & 2 3/8" TBG. TAGGED TOF @ 2691' ATTEMPTED TO WORK WASH PIPE & T-DOG OVER FISH, NO SUCCESS, TOO H W/ TBG, DC'S & WASH PIPE (**RUN #9**). PU 3 3/4" CONCAVED MILL, 4-3 1/8" DC'S & 80 JTS 2 3/8" TBG. BROKE CIRC W/ AIR MIST. MILLED ON FISH FOR 1 HOUR (NOT MUCH PROGRESS) MADE APPROX. 3". LIGHT METAL MILL SHAVINGS IN RETURN. BLEW WELL DRY. TOO H W/ 2 3/8" TBG, DC'S, AND MILL. INSPECT BOTTOM OF MILL. MILL SHOWED VERY LITTLE WEAR PATTERN. SISW.

10/21/2021: PU RIH W/ 3 3/4" IMPRESSION BLOCK & 86 JTS TBG. TAG FISH TOO H. IMPRESSION LOOKS TO BE 2 3/8" TUBE. PU RIH W/ OVERSHOT AND 3' EXTENSION DRESSED W/ 2 3/8" GRAPPLE, JARS. 6-3 1/8" DC'S & 79 JTS 2 3/8" TBG. SLID OVER FISH 2' PU STRING DID NOT PU WEIGHT & OR FEEL OVERSHOT SLIP OFF. TOO H. NO FISH RECOVERED. (**RUN #10**) PU OVERSHOT DRESSED W/ 3 1/16" SPIRAL GRAPPLE, JARS, DC'S & TBG. TAGGED FISH & SLID OVER FISH 3' PUH GAINED 4,000# STRING WEIGHT PUH LOST STRING WEIGHT. SET BACK DOWN ON FISH 3' HIGHER ORIGINAL TAG, TOO H W/ FISHING ASSEMBLY. FOUND 3 1/16" SPIRAL GRAPPLE TO BE BROKEN. (**RUN #11**) PU 3 7/8" X 2 3/8" SKIRTED MILL 6-3 1/8" DC'S AND 80 JTS TBG. TAGGED FISH BROKE CIRC. W/AIR MIST. MILL 1.5'. DRY WELL UP, HANG BACK SWIVEL, INSTALLED TIW. SISW.

10/22/2021: TOO H W/ SKIRTED MILL. PU RIH W/ OVERSHOT, 3' EXTENSION, JARS, DC'S AND 2 3/8" TBG. ENGAGED FISH @ 2689' PULLED 30,000# (16,000#) OVER STRING WEIGHT. TOO H W/ 1 JT OF FISH LD FISHING ASSEMBLY. (**RUN #12**) PU RIH W/ 3 7/8" CONCAVED MILL, DC'S & 82 JTS 2 3/8" TBG. TAGGED TOF @ 2721'. BROKE CIRC W/ AIR MIST. MILLED 17" RAN 2 - 5BBL SWEEPS. TOO H W/ MILLING ASSEMBLY. GOOD TUBE WEAR PATTERN ON MILL. SISW.

10/23/2021: PU OVERSHOT W/ 3' EXTENSION, JARS, DC'S AND 2 3/8" TBG. ATTEMPT TO ENGAGE FISH. NO SUCCESS. TOO H W/ FISHING ASSEMBLY FOUND SMALL PIECE OF MILLED TBG IN OVERSHOT. (**RUN #13**) REDRESSED OVERSHOT AND RIH, ATTEMPT TO LATCH FISH NO SUCCESS. (**RUN #14**) TOO H W/ FISHING ASSEMBLY. PU SHORT CATCH OVERSHOT, JARS, DC'S AND 2 3/8" ATTEMPT TO ENGAGE FISH. NO SUCCESS. (**RUN #15**) TOO H W/ FISHING ASSEMBLY. PU SKIRTED MILL, DC'S AND 2 3/8" TBG, BREAK CIRC. W/ 1600 SCF AIR 12 BBLs MIST/HR 1.5-GALS SOAP/10BBLs. MILL ON FISH TOP FOR 2.5 HRS. MADE 7". HANG BACK SWIVEL. SISW.

10/24/2021: TOO H W/ 2 3/8" J-55 TBG 6 - 3 1/8" DC'S & SKIRTED MILL. FOUND NO JUNK IN SHOE & INNER MILL HAD NO WEAR MAKINGS ON THE CUTTING SURFACE. SPOTTED IN 2 3/8" CS P110 WORK STRING. PU SEGMENTED 3 7/8" BOX TAP, JARS, 6 - 3 1/8" DC'S, XO, & 83 JTS 2 3/8" CS P110 HYDRIL TO TOF @ 2721' WORKED OVER FISH PUH W/NO OVER PULL. (**RUN #16**) TOO H W/ BOX TAP FISHING ASSEMBLY. NO FISH OR JUNK IN BOX TAP. LD FISHING ASSEMBLY. PU 3 7/8" 5 BLADE MILL, 6 - 3 1/8" DC'S 83 JTS. 2 3/8" CS P110 HYDRIL. SISW.

10/25/2021: PU 1 JT 2 3/8" CS P110 WORK STRING & SWIVEL. BREAK CIRC W/ AIR MIST. MILL ON FISH FROM 2721' TO 2723'. TOO H W/ MILLING ASSEMBLY. PU 3 7/8" OVERSHOT DRESSED W/ 2 3/8" GRAPPLE, 3' EXTENSION, JARS, 6 - 3 1/8" DC'S, XO AND 83 JTS 2 3/8" CS P110 HYDRIL. TRY & WORK OVER FISH NO SUCCESS. (**RUN #17**) SWIVEL UP, TRY AND R&R OVER FISH. NO SUCCESS. TOO H W/ FISHING ASSEMBLY. PU & RIH W/ 3 7/8" BOX TAP, JARS, 6 3 1/8" DC'S XO AND 83 JTS 2 3/8" CS P110 WORK STRING. R&R BOX TAP OVER FISH. KEEP SLIPPING OFF FISH @ 50K. (32K OVER STRING WEIGHT). (**RUN #18**) LAY DOWN SWIVEL. SISW.

P&A SR
B-10603-47

10/26/2021: TOO H W/ 2 3/8" CS P110 WORK STRING, DC'S & BOX TAP. PU 3 7/8" SHORT CATCH OVERSHOT, JARS, 6 - 3 1/8" DC'S, XO, 2 3/8" CS P110 HYDRIL WORK STRING. ENGAGE FISH, PULLED TO 24K, 8K OVER STRING WEIGHT. OVERSHOT SLIPPING OFF. **(RUN #19)** TOO H W/ FISHING ASSEMBLY LD JARS AND ND OVERSHOT. PU & RIH W/ 3 7/8" 5 BLADED MILL 6 - 3 1/8" DC'S AND 83 JTS 2 3/8" CS P110 WORK STRING. BROKE CRIC. W/ AIR MIST MILLED OFF 4". RUN 2 5BBL SWEEP, DRY UP WELL. TOO H W/ MILL ASSEMBLY. PU & RIH W/ 3 7/8" SHORT CATCH OVERSHOT DRESSED W/ 2 3/8" GRAPPLE, JARS, DC'S, AND 83 JTS 2 3/8" CS P110 HYDRIL. TAG FISH. R&R W/ SWIVEL TRYING TO ENGAGE FISH. NO SUCCESS. **(RUN #20)** LAY DOWN SWIVEL. SISW.

10/27/2021: TOO H W/ 2 3/8" CS P110 HYDRIL WORK STRING, DC'S, JARS, & 3 7/8" SHORT CATCH OVERSHOT. PU & RIH W/ 3 7/8" 5 BLADED MILL, 6 - 3 1/8" DC'S, 83 JTS 2 3/8" CS P110 HYDRIL WORK STRING BREAK CIRC W/ 1600 SCF AIR 15/HR MIST 2 GALS SOAP/10BBLs. MILL 4' OF FISH. NEW FISH TOP 2727' HUNG BACK SWIVEL. POOH W/ 83 JTS 2 3/8 CS P110 WORK STRING, DC'S, & 5 BLADED MILL. MILL HAD NO DISTINCTIVE WEAR PATTERN. SISW.

10/28/2021: PU RIH W/ 3 7/8" SHORT CATCH OVERSHOT, JARS, 6 - 3 1/8" DC'S, & 83 JTS 2 3/8" CS P110 HYDRIL WORK STRING. ENGAGE FISH. PULL 4K OVER STRING WEIGHT. TRY & ENGAGE FISH AGAIN TAGGED 1' DEEPER, PUH NO OVER PULL & OR PICK UP. **(RUN #21)** TOO H W/ FISHING ASSEMBLY. FOUND 17" PIECE OF SHAVED TBG IN THE OVERSHOT. PU AND RIH W/ BOX TAP, JARS, DC'S & WORK STRING. RU POWER SWIVEL. TRY TO R&R OVER FISH. NO SUCCESS. **(RUN #22)** TOO H W/ BOX TAP FISHING ASSEMBLY. PU ROUND TRIP IMPRESSION BLOCK. BLOCK SHOWED VERY RATTY FISH TOP. PU RIH W/ 3 7/8" CONCAVED MILL, DC'S, 83 JT 2 3/8" CS P110 WORK STRING.

10/29/2021: PU SWIVEL, TAG FISH @ 2727' BREAK CIRC W/ 1600 SCF AIR 15 BBLs/HR MIST 2 GALS SOAP/ 10 BBLs. MILLED ON FISH FROM 2727' TO 2729'. LD SWIVEL TOO H W/ CONCAVE MILLING ASSEMBLY. PU RIH W/ 3 7/8" SHORT CATCH OVERSHOT, JARS, 6 - 3 1/8" DC'S, XO, 83 JTS 2 3/8" CS P110, TAG FISH @ 2729' ENGAGE FISH, NO OVER PULL, TOO H W/ FISHING ASSEMBLY FOUND 12" SHAVED PIECE OF TBG IN GRAPPLE. **(RUN #23)** REMOVED TBG SLIVER, RIH W/ SAME FISHING ASSEMBLY. TAG FISH. ENGAGE FISH. PUH NO OVER PULL. **(RUN #24)** LD 1 JT. INSTALL TIW. SISW. SDFWE.

11/1/2021: TOO H W/ 2 3/8" CS WORK STRING, DC'S, JARS & OVERSHOT. NO FISH RECOVERED. PU RIH W/ TAPER TAP, JARS, DC'S & 83 JTS 2 3/8" CS P110 WORK STRING. COULD NOT ENGAGE. **(RUN #25)** TOO H W/ TAPER TAP FISHING ASSEMBLY. PU 3 7/8" MILL SHOE, 1 JT WASH OVER PIPE, JARS, 6 - 3 1/8 DC'S, 83 'JTS 2 3/8" SC P110 WORK STRING. RU SWIVEL. BREAK CIRC W/ AIR MIST. MILL/WASH OVER 1' OF FISH. HANG BACK SWIVEL, TOO H W/ WASH PIPE AND SHOE. SISW.

11/2/2021: TIH W/ 2 3/8" CS WORK STRING, DC'S, JARS & OVERSHOT W/ DRESS GUIDE ON BOTTOM. ATTEMPT TO ENGAGE FISH, STRING WEIGHT 12K, OVER PULL UP TO 24K AND FELT DRAG UP HOLE FOR FIRST 30' THEN GAINED 2K. LOST WEIGHT. TOO H W/ FISHING ASSEMBLY. PULL 3K OVER AND SLIP OFF AFTER TRIPPING 1 JT. NO RECOVERY. **(RUN #26)** LD ALL FISHING TOOLS AND WORK STRING. BEGIN RIGGING DOWN. PREP FOR MOVE. WELL TO BE P&A'D. SISW.

11/5/2021: UPDATE PROCEDURE TO COMBINE NACIMIENTO & SURF PLUG. APPROVAL GIVEN TO PERF @ 670' PER MONICA KUEHLING @ NMOCD.

11/29/2021: MIRU. CK WELL PRESSURES (SICP: 340 PSI, SITP: 0 PSI, SIICP: 0 PSI, SIBHP: 0 PSI). ND WH. NU BOP & FT, TST GOOD. PU CMT RETAINER, TALLY & PU TBG. SET CMT RETAINER @ 2680'. PT TBG TO 1000 PSI, GOOD TST. LOAD & PT CSG TO 640 PSI, GOOD TST. JONATHAN KELLY W/NMOCD ONSITE. MIX & PMP **PLUG #1 FROM 7460' TO 2303'** W/294 SKS 338.1 CUFT, 1.15 YIELD, 15.8 PPG, CLASS G CMT TO ISOLATE DAKOTA, GALLUP, MESAVERDE, CHACRA, LEWIS & PICTURED CLIFFS FORMATION. LD 12 JTS OF TBG. REVERSED OUT CMT F/2303'. TOH W/33 STANDS. SIW.

11/30/2021: CK WELL PRESSURES (SICP: 0 PSI, SITP: 0 PSI, SIICP: 0 PSI, SIBHP: 0 PSI). RU WIRELINE. RIH & PERF @ 2160'. POH. EST CIRC OUT INTERMEDIATE CSG. PU 4 1/2" CMT RETAINER. TIH & SET @ 2115'. MIX & PMP **PLUG #2 FROM 2160' TO 1859'**, W/63 SKS 72.45 CUFT, 1.15 YEILD, 15.8 PPG, CLASS G CMT TO ISOLATE THE KIRTLAND & OJO ALAMO FORMATION TOPS. LD 49 JTS. TOH W/9 STANDS. RU WL. RIH & PERF @ 670'. POH. EST CIRC OUT INTERMEDIATE CSG. PU 4 1/2" CMT RETAINER, TIH & SET @ 608'. MIX & PMP **PLUG #3 FROM 670' TO 570'**. W/27 SKS 31.05 CUFT, 1.15 YIELD, 15.8 PPG, CLASS G CMT TO ISOLATE NACIMIENTO. LD 19 JTS. RU WIRELINE & PERF @ 345'. POH. EST INJECTION RATE. UNABLE TO CIRC OUT BH. JONATHAN KELLY W/NMOCD ONSITE APPROVED PMP PLUG PER DESIGN. ND BOP & NU WH. MIX & PMP **PLUG #4 345' TO 0'**. W/72 SKS 82.8 CUFT, 1.15 YIELD, 15.8 PPG, CLASS G CMT TO ISOLATE SURF SHOE TO SURF. SI INTERMEDIATE CSG AFTER CMT RETURNS & SQUEEZED CMT OUT. PRESSURED UP TO 1000 PSI. DUG OUT CELLAR. WOC OVERNIGHT PER JONATHAN KELLY W/NMOCD. SIW. SDFN.

12/1/2021: CUT OFF WH & INSTALL DH MARKER. CMT TO SURFACE IN 4 1/2" CSG & 7" CSG. RAN POLY PIPE DWN 9 5/8" CSG TO 70'. TOPPED OFF 9 5/8" CSG & CELLAR W/27 SKS. RDRR @ 10: 00 HRS.

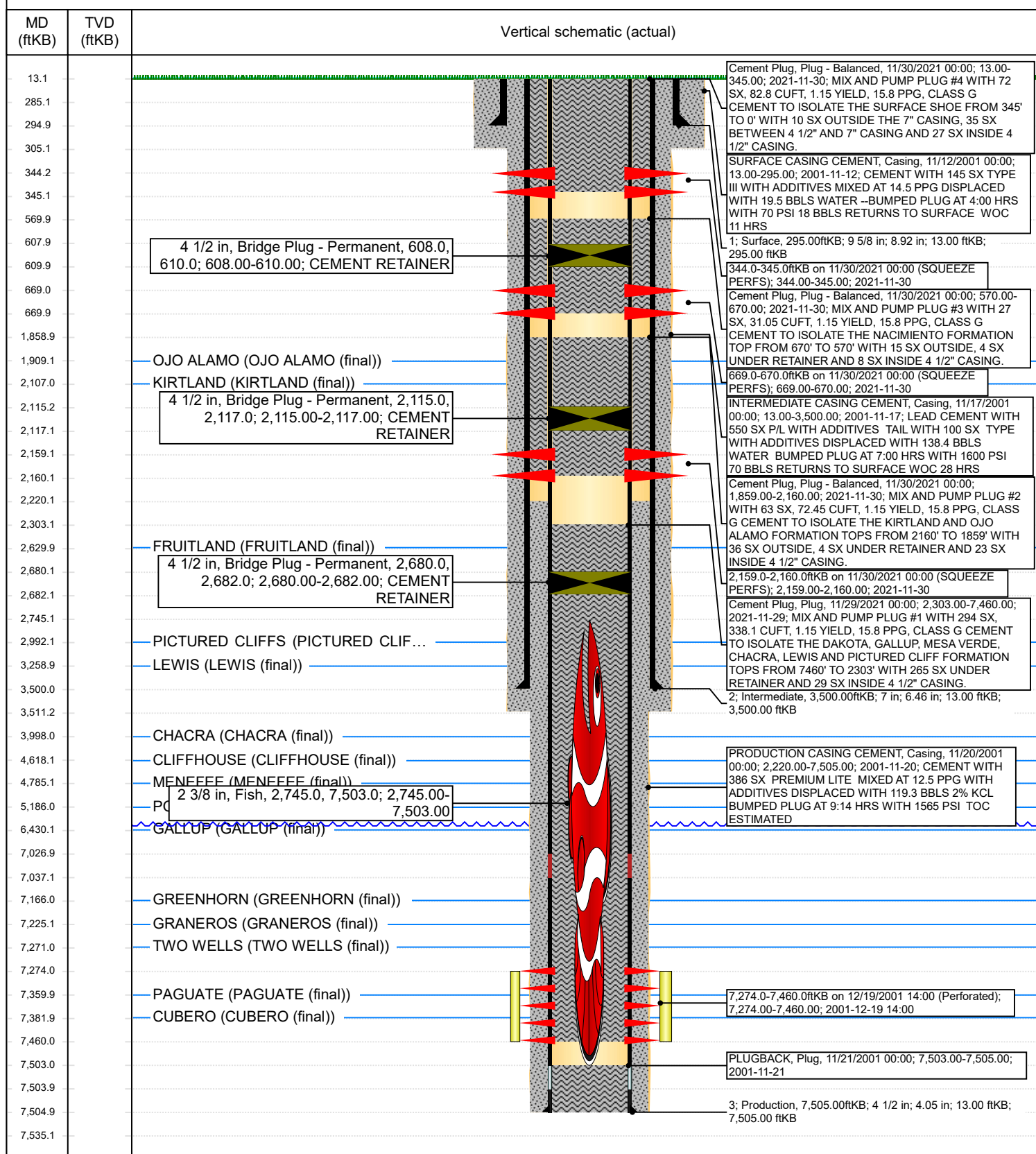


Current Schematic

Well Name: STATE COM N 10F

API / UWI 3004530623	Surface Legal Location 002-029N-008W-N	Field Name DK	Route 0801	State/Province NEW MEXICO	Well Configuration Type Vertical
Ground Elevation (ft) 6,248.00	Original KB/RT Elevation (ft) 6,261.00	KB-Ground Distance (ft) 13.00	KB-Casing Flange Distance (ft) 13.00	KB-Tubing Hanger Distance (ft) 13.00	

Original Hole [Vertical]



District I
1625 N. French Dr., Hobbs, NM 88240
Phone:(575) 393-6161 Fax:(575) 393-0720
District II
811 S. First St., Artesia, NM 88210
Phone:(575) 748-1283 Fax:(575) 748-9720
District III
1000 Rio Brazos Rd., Aztec, NM 87410
Phone:(505) 334-6178 Fax:(505) 334-6170
District IV
1220 S. St Francis Dr., Santa Fe, NM 87505
Phone:(505) 476-3470 Fax:(505) 476-3462

State of New Mexico
Energy, Minerals and Natural Resources
Oil Conservation Division
1220 S. St Francis Dr.
Santa Fe, NM 87505

CONDITIONS

Action 65323

CONDITIONS

Operator: HILCORP ENERGY COMPANY 1111 Travis Street Houston, TX 77002	OGRID: 372171
	Action Number: 65323
	Action Type: [C-103] Sub. Plugging (C-103P)

CONDITIONS

Created By	Condition	Condition Date
mkuehling	None	12/29/2021