

Submit Copy To Appropriate District

Office
 District I – (575) 393-6161
 1625 N. French Dr., Hobbs, NM 88240
 District II – (575) 748-1283
 811 S. First St., Artesia, NM 88210
 District III – (505) 334-6178
 1000 Rio Brazos Rd., Aztec, NM 87410
 District IV – (505) 476-3460
 1220 S. St. Francis Dr., Santa Fe, NM
 87505

State of New Mexico
 Energy, Minerals and Natural Resources

Form C-103
 Revised July 18, 2013

OIL CONSERVATION DIVISION
 1220 South St. Francis Dr.
 Santa Fe, NM 87505

WELL API NO. 30-045-33017
5. Indicate Type of Lease STATE <input checked="" type="checkbox"/> FEE <input type="checkbox"/>
6. State Oil & Gas Lease No. B-11240-96
7. Lease Name or Unit Agreement Name State J Com
8. Well Number 2S
9. OGRID Number 372171
10. Pool name or Wildcat Basin Fruitland Coal
11. Elevation (Show whether DR, RKB, RT, GR, etc.) 6257'

SUNDRY NOTICES AND REPORTS ON WELLS
 (DO NOT USE THIS FORM FOR PROPOSALS TO DRILL OR TO DEEPEN OR PLUG BACK TO A
 DIFFERENT RESERVOIR. USE "APPLICATION FOR PERMIT" (FORM C-101) FOR SUCH
 PROPOSALS.)

1. Type of Well: Oil Well ☐ Gas Well ☒ Other

2. Name of Operator
 HILCORP ENERGY COMPANY

3. Address of Operator
 382 Road 3100, Aztec, NM 87410

4. Well Location
 Unit Letter D : 715 feet from the N line and 785 feet from the W line
 Section 16 Township 26N Range 11W NMPM San Juan County

12. Check Appropriate Box to Indicate Nature of Notice, Report or Other Data

NOTICE OF INTENTION TO:

PERFORM REMEDIAL WORK ☐ PLUG AND ABANDON ☒
 TEMPORARILY ABANDON ☐ CHANGE PLANS ☐
 PULL OR ALTER CASING ☐ MULTIPLE COMPL ☐
 DOWNHOLE COMMINGLE ☐
 CLOSED-LOOP SYSTEM ☐
 OTHER: ☐

SUBSEQUENT REPORT OF:

REMEDIAL WORK ☐ ALTERING CASING ☐
 COMMENCE DRILLING OPNS. ☐ P AND A ☐
 CASING/CEMENT JOB ☐
 OTHER: ☐

13. Describe proposed or completed operations. (Clearly state all pertinent details, and give pertinent dates, including estimated date of starting any proposed work). SEE RULE 19.15.7.14 NMAC. For Multiple Completions: Attach wellbore diagram of proposed completion or recompletion.

Hilcorp Energy Company requests permission to P&A the subject well per the attached procedures, current and proposed wellbore schematics. A closed loop system will be used.

Spud Date:

Rig Release Date:

I hereby certify that the information above is true and complete to the best of my knowledge and belief.

SIGNATURE Kandis Roland TITLE Operations/Regulatory Technician – Sr. DATE 12/17/21

Type or print name Kandis Roland E-mail address: kroland@hilcorp.com PHONE: 713-757-5246
For State Use Only

APPROVED BY: _____ TITLE _____ DATE _____
 Conditions of Approval (if any):



P&A Procedure

General Information			
Well Name	State J Com #2S	Date:	1/6/2022
API:	30-045-33017	AFE #	
Field:	San Juan	County	San Juan
Status:	Well is ACOI		
Subject:	Permanently P&A wellbore		
By:	M. Wissing		

Well Data

Surface Casing: 9-5/8" 36# J-55 ST&C at 239'

Intermediate Casing: 7" 23# J-55 at 1,830'

Pre-perforated Liner: 4-1/2" 11.6# P-110 LTC at 1,769' – 3,356'

Production Tubing: 2-3/8" J-55 4.7# at 1,704'

Rod String: 3/4" Guided rods, shear tool, 2" x 1.25" x 10' RWAC insert pump

Current Perforations: 1,926'-2,095', 2,231'-2,402', 2,538'-2,707', 2,839'-3,008', & 3,143'-3,309' (2,712 holes, 4 jspf)

Current PBTD: 3,309' (Float collar)

Wellbore: Horizontal

SICP = 0 psig

Notes: Historic notes of scale on rod string and tbg rod wear.

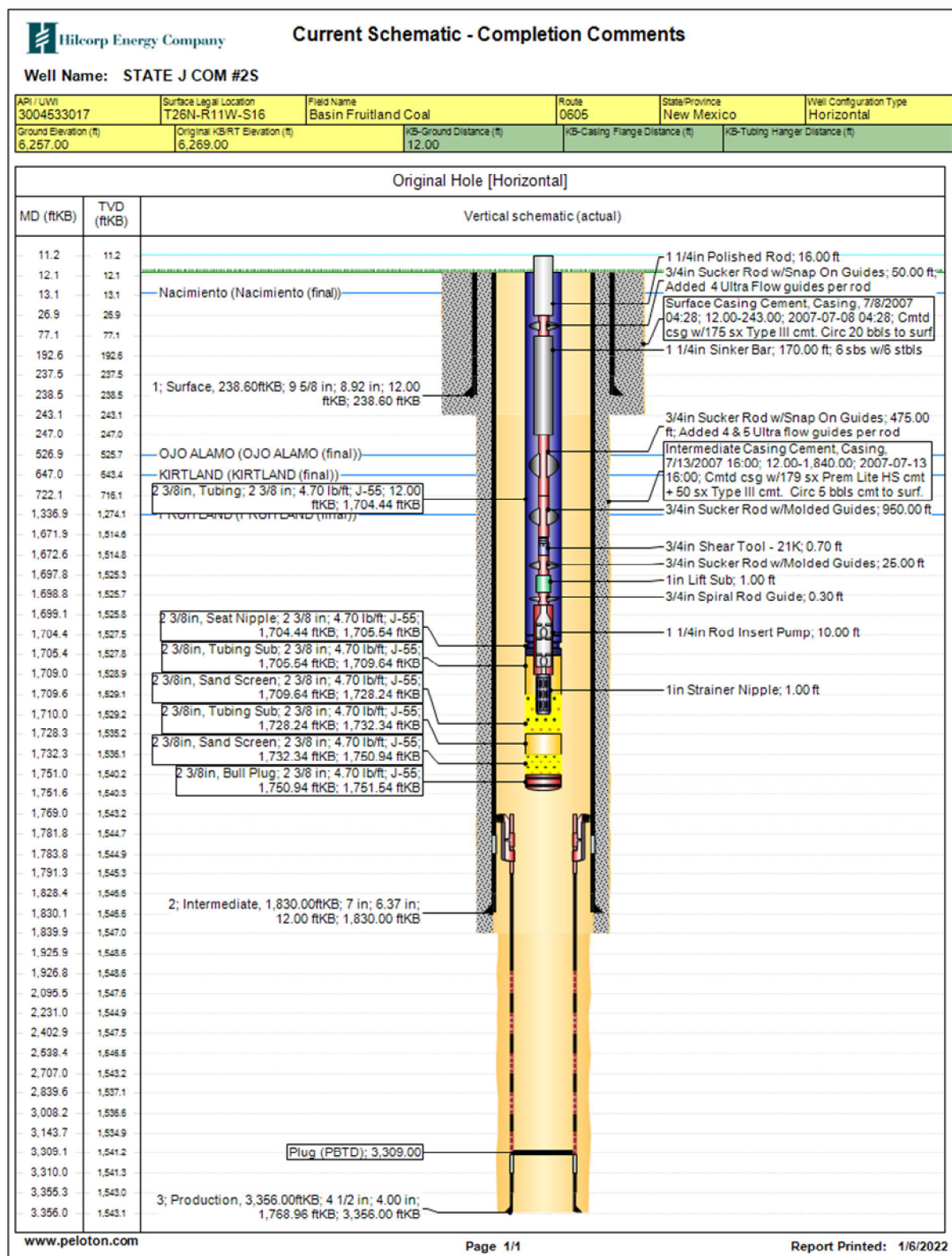
Hold PJSM prior to begin all operations. Properly document all operations via the JSA process. Ensure that all personnel onsite abide by HEC safety protocol, including PPE, housekeeping, and standard guidelines. Verify cathodic protection is off and wellhead instrumentation is properly disconnected from the wellhead. Comply with all NMOCD, BLM, & HEC safety and environmental regulations. Verify there is no H2S present prior to beginning operations. If any H2S is present, take the necessary actions to ensure that the location is safe prior to beginning operations. Observe and record pressures across all strings daily, prior to beginning operations.

Remember to notify NMOCD and BLM 24 hours prior to starting operations on location. This procedure is contingent upon P&A sundry approval by NMOCD and BLM.

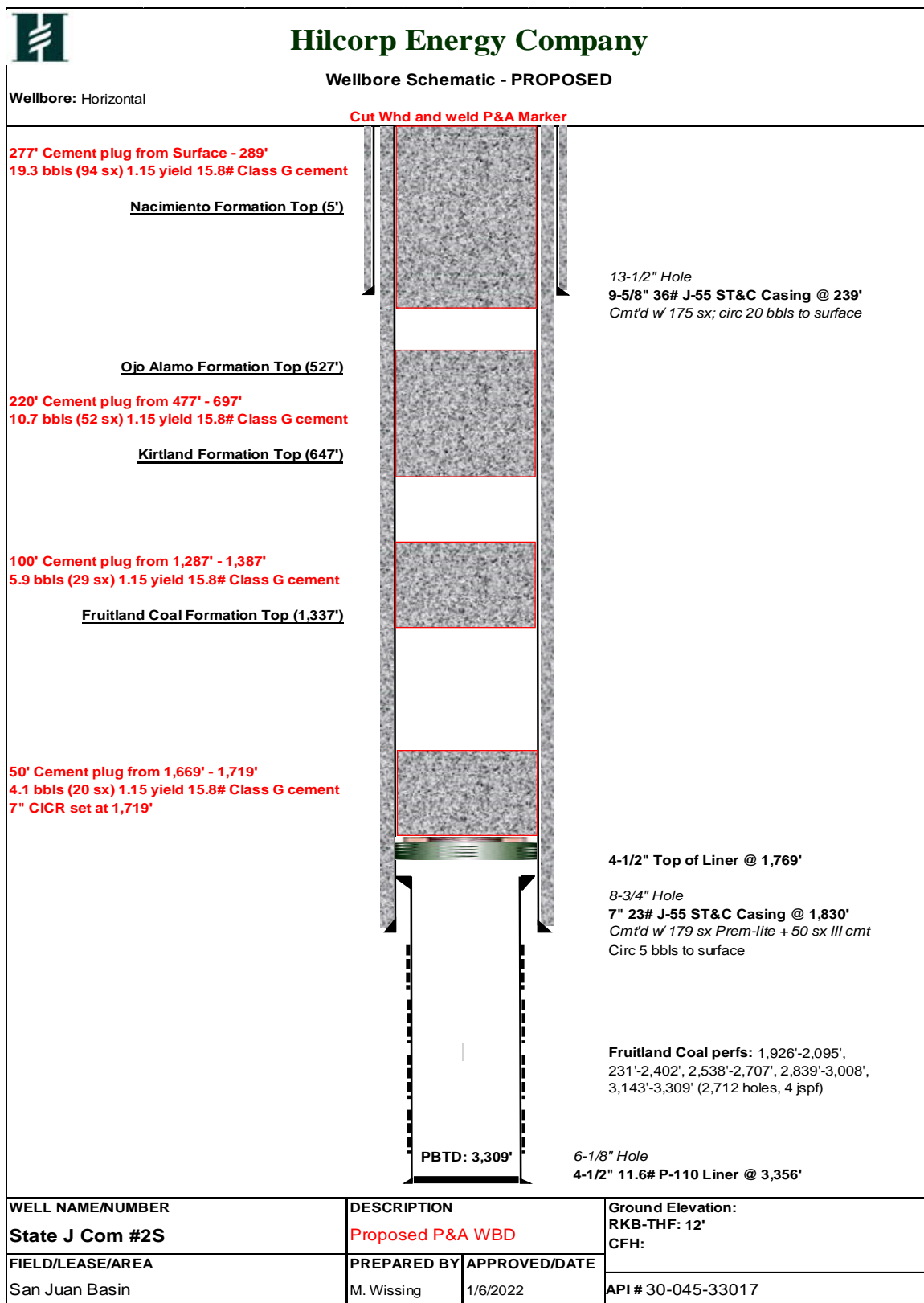
P&A Rig Procedure

1. MIRU P&A rig and equipment. Record pressures on all strings.
2. Unseat insert rod pump and POOH with rod string & pump. NU BOP & test. TOOH with production tbg.
3. RIH with 7" casing scraper to +/- 1,735'.
4. MU 7" CICR and RIH with 2-3/8" work string. Set CICR at 1,719'.
 - a. **Fruitland Coal top perf at 1,926'; 4-1/2" Liner top at 1,769'**
5. Load wellbore with KCl water and circulate wellbore clean. Pressure test the casing to 500 psi to verify wellbore integrity and plug set.
6. **Cement Plug #1 (Fruitland Coal top perforation at 1,926', 4-1/2" Liner top at 1,769')**: RU cementers and pump a 50' balanced cmt plug inside the 7" csg from 1,669' – 1,719', using 4.1 bbls (20 sx) of 15.8+ ppg Class G cmt.
7. TOOH with tbg to 1,387'.
8. **Cement Plug #2 (Fruitland Coal Formation Top at 1,337')**: RU cementers and pump a 100' balanced cmt plug inside the 7" csg from 1,287' – 1,387', using 5.9 bbls (29 sx) of 15.8+ ppg Class G cmt.
9. TOOH with tbg to 697'.
10. **Cement Plug #3 (Ojo Alamo Formation Top at 527' & Kirtland Formation Top at 647')**: RU cementers and pump a 220' balanced cmt plug inside the 7" csg from 477' - 697', using 10.7 bbls (52 sx) of 15.8+ ppg Class G cmt.
11. TOOH with tbg to 289'.
12. **Cement Plug #4 (Surface Casing shoe at 239' & Nacimiento Formation Top at 5')**: RU cementers and pump a 277' balanced cmt plug from Surface – 289' inside the 4-1/2" using 19.3 bbls (94 sx) of 15.8 ppg Class G cmt.
13. WOC 4 hrs. Verify all pressures on all strings.
14. ND BOP. Tag cmt and top off wellbore as needed. Cutoff wellhead at surface and weld P&A marker.
15. RDMO P&A rig.

CURRENT WELLBORE SCHEMATIC



PROPOSED P&A WELLBORE SCHEMATIC



District I
1625 N. French Dr., Hobbs, NM 88240
Phone:(575) 393-6161 Fax:(575) 393-0720
District II
811 S. First St., Artesia, NM 88210
Phone:(575) 748-1283 Fax:(575) 748-9720
District III
1000 Rio Brazos Rd., Aztec, NM 87410
Phone:(505) 334-6178 Fax:(505) 334-6170
District IV
1220 S. St Francis Dr., Santa Fe, NM 87505
Phone:(505) 476-3470 Fax:(505) 476-3462

State of New Mexico
Energy, Minerals and Natural Resources
Oil Conservation Division
1220 S. St Francis Dr.
Santa Fe, NM 87505

CONDITIONS

Action 70904

CONDITIONS

Operator: HILCORP ENERGY COMPANY 1111 Travis Street Houston, TX 77002	OGRID: 372171
	Action Number: 70904
	Action Type: [C-103] NOI Plug & Abandon (C-103F)

CONDITIONS

Created By	Condition	Condition Date
kpickford	Notify NMOCD 24 Hours Prior to beginning operations	1/13/2022