

Submit 1 Copy To Appropriate District
Office
District I – (575) 393-6161
1625 N. French Dr., Hobbs, NM 88240
District II – (575) 748-1283
811 S. First St., Artesia, NM 88210
District III – (505) 334-6178
1000 Rio Brazos Rd., Aztec, NM 87410
District IV – (505) 476-3460
1220 S. St. Francis Dr., Santa Fe, NM
87505

State of New Mexico
Energy, Minerals and Natural Resources

Form C-103
Revised July 18, 2013

OIL CONSERVATION DIVISION
1220 South St. Francis Dr.
Santa Fe, NM 87505

WELL API NO.
30-015-21711

5. Indicate Type of Lease
STATE ☒ FEE ☐

6. State Oil & Gas Lease No.
648

7. Lease Name or Unit Agreement Name
DHY A STATE SWD

8. Well Number 001

9. OGRID Number 119305

10. Pool name or Wildcat
SAN ANDRES-GLORIETA

SUNDRY NOTICES AND REPORTS ON WELLS

(DO NOT USE THIS FORM FOR PROPOSALS TO DRILL OR TO DEEPEN OR PLUG BACK TO A DIFFERENT RESERVOIR. USE "APPLICATION FOR PERMIT" (FORM C-101) FOR SUCH PROPOSALS.)

1. Type of Well: Oil Well ☐ Gas Well ☒ Other SWD

2. Name of Operator
RAY WESTALL OPERATING, INC.

3. Address of Operator
P.O. BOX 4, LOCO HILLS, NM 88255

4. Well Location

Unit Letter J : 1980' feet from the SOUTH line and 1650' feet from the EAST line.

Section 15 Township 19S Range 28E NMPM County EDDY

11. Elevation (Show whether DR, RKB, RT, GR, etc.)

12. Check Appropriate Box to Indicate Nature of Notice, Report or Other Data

NOTICE OF INTENTION TO:

PERFORM REMEDIAL WORK ☐ PLUG AND ABANDON ☐
TEMPORARILY ABANDON ☐ CHANGE PLANS ☐
PULL OR ALTER CASING ☐ MULTIPLE COMPL ☐
DOWNHOLE COMMINGLE ☐
CLOSED-LOOP SYSTEM ☐

OTHER:

☐

SUBSEQUENT REPORT OF:

REMEDIAL WORK ☐ ALTERING CASING ☐
COMMENCE DRILLING OPNS. ☐ P AND A ☐
CASING/CEMENT JOB ☐

OTHER: Come up hole to different zone.

13. Describe proposed or completed operations. (Clearly state all pertinent details, and give pertinent dates, including estimated date of starting any proposed work). SEE RULE 19.15.7.14 NMAC. For Multiple Completions: Attach wellbore diagram of proposed completion or recompletion.

SEE ATTACHED PROCEDURE

Spud Date:

Rig Release Date:

I hereby certify that the information above is true and complete to the best of my knowledge and belief.

SIGNATURE [Signature] TITLE BOOKKEEPER DATE 12/15/21

Type or print name RENE HOPE E-mail address: PHONE: 575-677-2370

For State Use Only

APPROVED BY: Kerry Fortner TITLE Compliance Officer A DATE 1/19/22

DHY A state #1 SWD

12/2/21 R U pulling unit and HYD. BOP unset pkr. Start out of hole with tbg and pkr. Shut down for night.

12/03/21 Finish out of hole with pkr and tbg. Shut down for weekend.

12/06/21 Go in hole with CIBP to 9505'. Attempt to set CIBP, would not set, come out of hole.

12/07/21 Go in hole with wireline, CIBP set at 9505'. Pump 80 sxs class H cement. Displace with MLF. Pull up hole to 5000' reverse tbg, clean with MLF. Shut down for night.

12/08/21 Go in hole, tag top of cement at 8700'. Circulate MLF to 3200'. Come out of hole to 4668'. Pump 25 sxs cement to cover interval 4666'- 4566' displace with MLF. Come out of hole with tbg. Shut down for night.

12/09/21 Go in hole with wireline to tag cement plug. Tagged at 4540'. Go in hole with CIBP, set at 3200' with 35' cement on top. New PBTD 3165'. Perforate well at:

2451'- 2502' 1 shot/ft

2530'- 2540' 2 shot/ft

2628'- 2650' 2 shot/ft

2700'- 2710' 2 shot/ft

2720'- 2730' 2 shot/ft

2920' - 2950' 1 shot/ft

3000'- 3020' 1 shot/ft

3040' 3050' 1 shot/ft

3080'- 3110' 1 shot/ft

10/09/21 Continue going in hole with pkr and tbg. Acidize well with 2500 gal. of 15% HCL acid. Pump pkr fluid, set pkr at 2397'.

10/10/21 Pressure up on annulus to 350 psi, held ok. Rig down pulling unit. Will call NMOCD to schedule MIT.



WELL SCHEMATIC - PROPOSED DHY 'A' State Well No.1 SWD

API 30-015-21711

1980' FSL & 1650' FEL, SEC. 15-T19S-R28E
EDDY COUNTY, NEW MEXICO

SWD; San Andres-Glorieta (96127)

P&A Date: 3/17/1976

Re-Config Date: ~11/15/2018

Annulus Monitored
or open to atmosphere

420'

Annulus Loaded
w/ Inert Packer Fluid

2800'

Set CIBP @ ~3200'
(Cap w/ 35' Cmt.)MLF From
3200' - 4540'

PBTD @ 3165'

TOC 4540

Pump CMT Plug
From 4668 - 4566MLF From
4668 - 8700'

TOC @ 8700'

80 sx Class H CMT

CIBP @ 9505'

Spot 50 sx Cmt
10007'-9857'

DTD @ 11510'

Surface Casing12.75", 40.0# Csg. (17.5" Hole) @ 420'
400 sx Circulated to Surface2 7/8" IC Tubing
PKR. 2397.73Intermediate Casing8.625", 24.0 & 32.0# Csg. (11.0" Hole) @ 2800'
1500 sx + 100 sx 3/4" job - Circ. to Surf.

Selectively Perf Intervals: 2451-3110

RAY WESTALL OPERATING, INC.

Convert to SWD: POOH w/ TBG & PKR. Set CIBP @ ~9500

Cap w/ 35' Cmt; Load hole w/ MLF; Set CIBP @ ~3200'.

Cap w/ 35' Cmt. Select and Perf Interval.

Run PC Tubing and PKR - Conduct MIT.

Commence Disposal Operations.

Production Casing7.0", 20.0/23.0/26.0# Csg - Surface to 9505'
Est. ~800 sx w/ excess - Circulate to Surface
2 Stage Cmt w/ DV ~5000'

Drawn by: Ben Stone, Rev'd 1/29/2021



State of New Mexico
Energy, Minerals and Natural Resources Department

Michelle Lujan Grisham
Governor

Sarah Cottrell Propst
Cabinet Secretary

Todd E. Leahy, JD, PhD
Deputy Secretary

Adrienne Sandoval, Division Director
Oil Conservation Division



Date: 12-14-2021

API# 30-015-21711

A **Mechanical Integrity Test (M.I.T.)** was performed on, Well DHY A state SWD#001

☒ **M.I.T. is successful**, the original chart has been retained by the Operator on site. Send a **legible** scan of the chart with an attached **Original C-103 Form** indicating reason for the test, via post mail to District NMOCD field office. A scanned image will appear online via NMOCD website, www.emnrd.state.nm.us/ocd/OCDOOnline.htm 7 to 10 days after postdating.

☐ **M.I.T. is unsuccessful**, the original chart is returned to the Operator. Repairs will be made; Operator is to schedule for a re-test within a 90-day period. If this is a test of a repaired well currently in non-compliance, all dates and requirements of the original are still in effect.
No expectation of extension should be construed because of this test.

☐ **M.I.T. for Temporary Abandonment**, shall include a detailed description on **Form C-103**, including the location of the CIBP and any other tubular goods in the well including the Operator's request for TA status timeline.


☐ **M.I.T. is successful**, after the secondary request of a scheduled M.I.T. is performed. Therefore, Operator has within a 30-day period from the M.I.T. to submit a current C-103 along with a legible scan of the Chart, including a detailed description of the repair(s). **Only after receipt of the C-103 will the non-compliance be closed.**

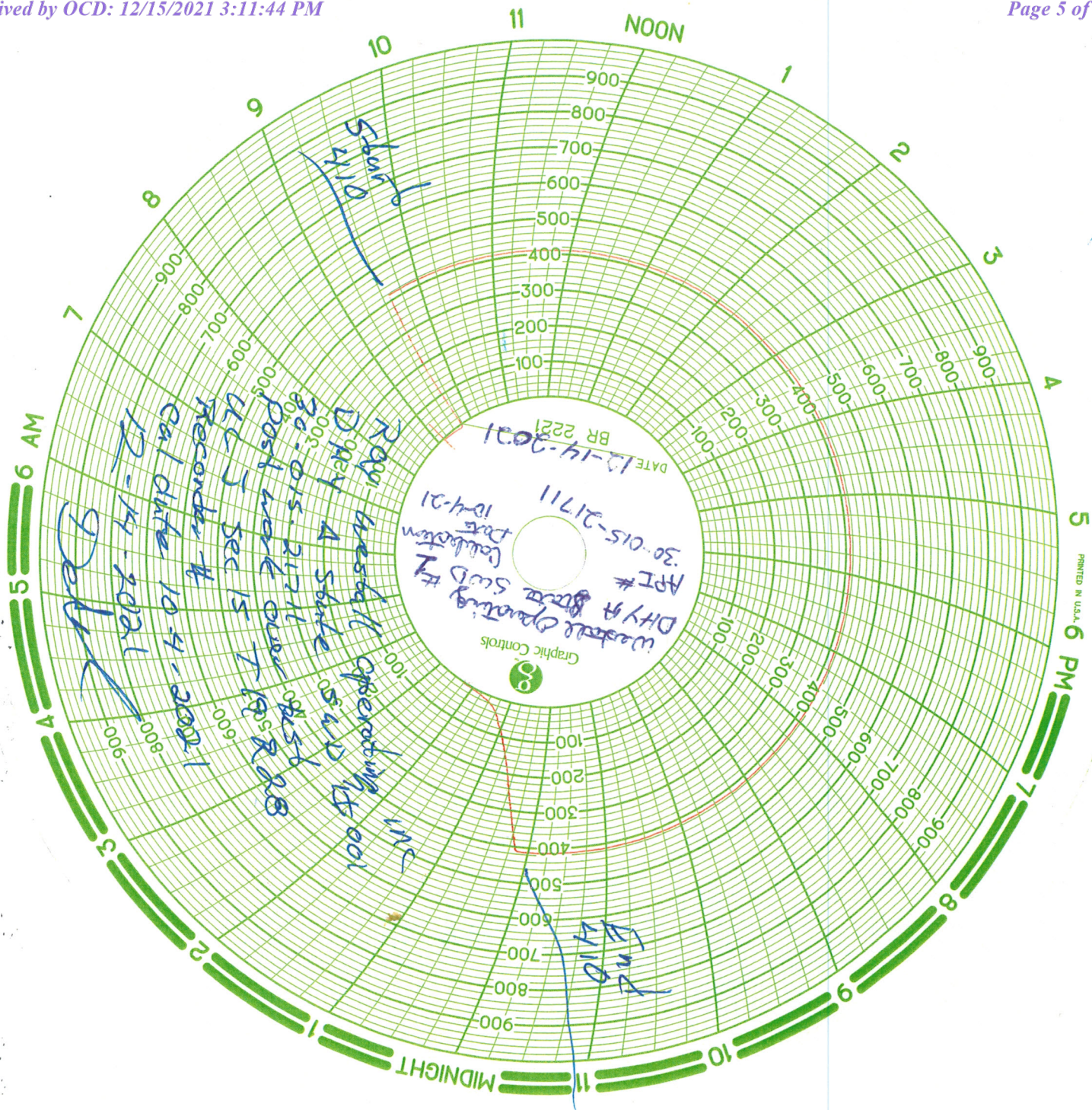
☐ **M.I.T. is successful**, Initial of an injection well, you must submit a **form C-103** to NMOCD within 30 days. A **C-103 form** must include a detailed description of the work performed on this well including the position of the packer, tubing Information, the date of first Injection, the tubing pressure and Injection volume.

Please contact me for verification to ensure documentation requirements are in place prior to injection process.

If I can be of additional assistance, please feel free to contact me at (575) 626-0836

Thank You,


Dan Smolik, Compliance Officer
EMNRD-O.C.D.
District II – Artesia, NM



12-14-2021

Ray Westall operating

DHY A State #1 SWD

API-30-015-21711

MI Calibration Date 10-4-21

District I
1625 N. French Dr., Hobbs, NM 88240
Phone:(575) 393-6161 Fax:(575) 393-0720
District II
811 S. First St., Artesia, NM 88210
Phone:(575) 748-1283 Fax:(575) 748-9720
District III
1000 Rio Brazos Rd., Aztec, NM 87410
Phone:(505) 334-6178 Fax:(505) 334-6170
District IV
1220 S. St Francis Dr., Santa Fe, NM 87505
Phone:(505) 476-3470 Fax:(505) 476-3462

State of New Mexico
Energy, Minerals and Natural Resources
Oil Conservation Division
1220 S. St Francis Dr.
Santa Fe, NM 87505

CONDITIONS

Action 67282

CONDITIONS

Operator: RAY WESTALL OPERATING, INC. P.O. Box 4 Loco Hills, NM 88255	OGRID: 119305
	Action Number: 67282
	Action Type: [C-103] Sub. (Re)Completion Sundry (C-103T)

CONDITIONS

Created By	Condition	Condition Date
kfortner	None	1/19/2022