

Office
District I – (575) 393-6161
1625 N. French Dr., Hobbs, NM 88240
District II – (575) 748-1283
811 S. First St., Artesia, NM 88210
District III – (505) 334-6178
1000 Rio Brazos Rd., Aztec, NM 87410
District IV – (505) 476-3460
1220 S. St. Francis Dr., Santa Fe, NM 87505

OIL CONSERVATION DIVISION
1220 South St. Francis Dr.
Santa Fe, NM 87505

WELL API NO. 30-015-21149
5. Indicate Type of Lease STATE <input checked="" type="checkbox"/> FEE <input type="checkbox"/>
6. State Oil & Gas Lease No.
7. Lease Name or Unit Agreement Name Allied State Com
8. Well Number 1
9. OGRID Number 6137
10. Pool name or Wildcat Burton Flat; Atoka

<p>SUNDRY NOTICES AND REPORTS ON WELLS (DO NOT USE THIS FORM FOR PROPOSALS TO DRILL OR TO DEEPEN OR PLUG BACK TO A DIFFERENT RESERVOIR. USE "APPLICATION FOR PERMIT" (FORM C-101) FOR SUCH PROPOSALS.)</p> <p>1. Type of Well: Oil Well <input type="checkbox"/> Gas Well <input checked="" type="checkbox"/> Other <input type="checkbox"/></p> <p>2. Name of Operator Devon Energy Production Company, LP</p> <p>3. Address of Operator 333 W. Sheridan Avenue, Oklahoma City, OK 73102</p> <p>4. Well Location Unit Letter <u>C</u> :660 feet from the <u>North</u> line and <u>1980</u> feet from the <u>West</u> line Section <u>14</u> Township <u>21S</u> Range <u>27E</u> NMPM Eddy County, NM</p> <p>11. Elevation (Show whether DR, RKB, RT, GR, etc.) 3235' KB</p>	
--	--

12. Check Appropriate Box to Indicate Nature of Notice, Report or Other Data

NOTICE OF INTENTION TO:

PERFORM REMEDIAL WORK ☐ PLUG AND ABANDON ☐
TEMPORARILY ABANDON ☐ CHANGE PLANS ☐
PULL OR ALTER CASING ☐ MULTIPLE COMPL ☐
DOWNHOLE COMMINGLE ☐
CLOSED-LOOP SYSTEM ☐
OTHER: ☐

SUBSEQUENT REPORT OF:

REMEDIAL WORK ☐ ALTERING CASING ☐
COMMENCE DRILLING OPNS. ☐ P AND A ☒
CASING/CEMENT JOB ☐

OTHER: Devon Company Rep Notified 5/11/21
☐

13. Describe proposed or completed operations. (Clearly state all pertinent details, and give pertinent dates, including estimated date of starting any proposed work). SEE RULE 19.15.7.14 NMAC. For Multiple Completions: Attach wellbore diagram of proposed completion or recompletion.

5-11-21. Open well with 1500 psi on tbg & casing. Start blowing well down to tank. Load tbg & casing with brine water. N/D wellhead & N/U BOP's. Release packer & POOH laying down 20 jts.

5-12-21. Open well with 100 psi on tbg & casing. Checked psi on intermediate casing. Showed 1200 psi. Blow casing down to tank. POOH laying down tbg. Got out of hole with just on/off tool. R/U W-L. Pick up 4 1/2" GR & JB. TIH. Tagged top of packer @ 3500'. POOH & R/D W-L. Pick up on/off tool & TIH picking up tbg. Latch up to packer & POOH laying down tbg. Laid down packer & on/off tool. (336 jts)

5-13-21. Open well with 200 psi on casing. Blow well down to rig tank. R/U W-L. Pick up 4 1/2" CIBP & setting tool. TIH. Set CIBP @ 10740'. POOH & laid down setting tool. R/D W-L. Unload work string & tally. Pick up 4' perf sub & TIH picking up tbg. Tagged top of CIBP with 352 jts. Laid down 1 jt. End of tbg @ 10719'

5-14-21 Open well with 200 psi on csg and tbg. RU WL Set 4.5 CIBP @ 10670' POOH. PU 4' perf sub RIH w/tbg.

5-17-21. Open well with 0 psi on tbg & casing. Tried to test casing & casing didn't test. Circulate well around with Salt Gel. (200 bbl.'s). Well started to circulate up intermediate casing. Stand by on orders. Pump plug @ 10670'-9890'. (75 sxs). POOH standing back 20 stands. Reverse circulate well around. (65 bbl.'s). LD 2 jts

5-18-21. Open well with 0 psi on tbg & casing. TIH & Tag @ 9760'. No test on casing. POOH standing back 143 stands & laid down 63 jts. Pick up packer & TIH. Testing for casing leak. Casing leak was below 8700'. Stand by on orders.

5-19-21. Open well with 0 psi on tbg & casing. R/U W-L. Perf @ 8987'-8986'. Pump plug @ 8987'-8887'. (45 sxs). Stand by on cement to set. (6 hrs). TIH & tagged @ 8847'. POOH laying down 97 jts. Perf @ 6110'-6109'. Pump plug @ 6110'-6000'. (35 sxs).

5-20-21. Open well with 0 psi on tbg & casing. TIH & tagged top of cement @ 5980'. POOH laying down 83 jts. R/U W-L. Perf @ 5420'-5419'. Pump plug @ 5420'-5310'. (35 sxs). Stand by on cement to set up. (4 hrs.). TIH & Tagged top of cement @ 5290'. POOH laying down 84 jts. R/U W-L. Perf @ 3050'-3049'. Pump plug @ 3050'-2720'. (105 sxs).

5-21-21. Open Well 0 psi. TLOC 2700'. LD 83jts. RU WL perf 660'-659' Pump Plug @ 660'-0' (210 sxs) Cut Wellhead, Weld Cap, Ground Marker, clean location.

Spud Date:

5/25/2006

I hereby certify that the information above is true and complete to the best of my knowledge and belief.

SIGNATURE Buford, Jeffery M. TITLE Manager DATE 5/25/21
639419DFF0104A1...

Type or print name Jeffery Buford E-mail address: Jeffery.buford@axisofs.com PHONE: 903-590-9717

For State Use Only

APPROVED BY: Accepted for record – NMOCD gc 1/14/2022 DATE _____

Conditions of Approval (if any):

DEVON ENERGY PRODUCTION COMPANY LP

Well Name: ALLIED STATE COM 1		Field: BURTON FLAT	
Location: 660' FNL & 1980' FWL; SEC 14-T21S-R27E		County: EDDY	State: NM
Elevation: 3248' KB; 3235' GL		Spud Date: 5/5/74	Compl Date: 8/20/74
API#: 30-015-21149	Prepared by: Armon Radfar	Date: 8/17/21	Rev:

FINAL WELLBORE

17-1/2" hole

13-3/8", 54.5#, K55, STC, @ 606'

Cmt'd w/700 sx to surface.

12-1/4" hole

9-5/8", 40#, K55, STC, @ 3,000'

Cmt'd w/1500 sx to surface

TOC @ 9540' (temp survey)

ATOKA (10/08)**10720'-10722'**

10/8/08: acid frac 10720-10804 w/1500 gals acid + 12K# 20/40.

ATOKA (11/7/88)**10792'-10804'** 4 spf

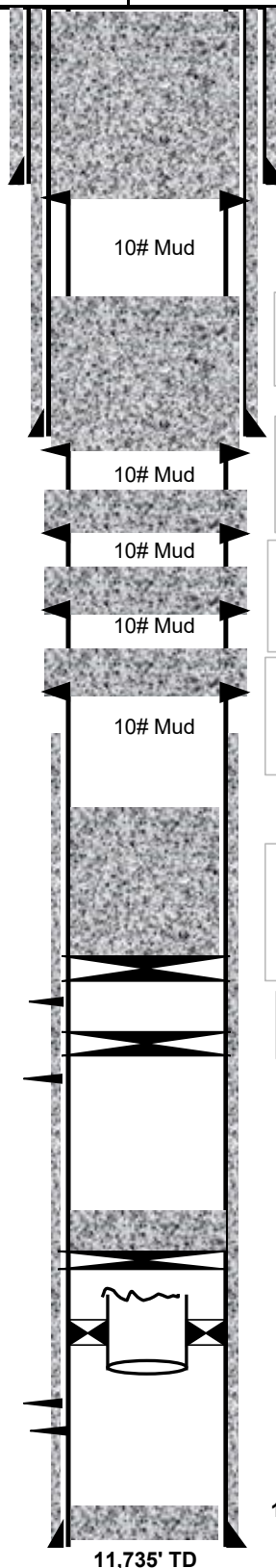
1/4/89: acidized 10792-10804 w/2000 gals 10% Morrow

MORROW (8/74)**11428'-11438'****11444'-11456'**

8-3/4" Hole

4-1/2", 10.5# & 11.6#, N80 & K55, @ 11,735'

Cmt'd w/700 sx



1. Perf @ 660'.
2. Sqz 210 sx Cl C from 660' to surface.
3. Cut WH off 3' BGL, set dry hole marker.
(Shoe @ 606'; Yates @ 427')

1. Perf @ 3050'.
2. Sqz 105 sx Cl C from 3050'-2700'. WOC & tag.
(Shoe @ 3000'; T. Delaware @ 2774')

1. Perf @ 5420'.
2. Sqz 35 sx Cl C from 5420'-5290'. WOC and tag
(T. Bone Springs @ 5364')

1. Perf @ 6110'.
2. Sqz 35 sx Cl C from 6110'-5980'. WOC and tag

1. Perf @ 8987'.
2. Sqz 45 sx Cl H from 8987'-8847'. WOC and tag
(T. Wolfcamp @ 8937')

1. Set CIBP @ 10670'. Tag. Circ 10# salt gel.
2. Spot 75 sx Cl H from 10670'-9760'. WOC and tag
(Perfs @ 10720'; T. Atoka @ 10566'; T. Strawn @ 10225'; T. Cisco @ 9948')

1. Set CIBP @ 10,740'. Tag

Fished out Vann Guns (10/6/08)
Drilled out cement to 10,900' (11/88)

25 Sx cement
CIBP @ 11,282' (11/88)

Unable to rise packer, cut 2-3/8" tbg @ 11,280' (10/88)
Otis MH-2 Retrievable packer @ 11,395'

11533' PBTD

11,735' TD

District I
1625 N. French Dr., Hobbs, NM 88240
Phone:(575) 393-6161 Fax:(575) 393-0720
District II
811 S. First St., Artesia, NM 88210
Phone:(575) 748-1283 Fax:(575) 748-9720
District III
1000 Rio Brazos Rd., Aztec, NM 87410
Phone:(505) 334-6178 Fax:(505) 334-6170
District IV
1220 S. St Francis Dr., Santa Fe, NM 87505
Phone:(505) 476-3470 Fax:(505) 476-3462

State of New Mexico
Energy, Minerals and Natural Resources
Oil Conservation Division
1220 S. St Francis Dr.
Santa Fe, NM 87505

CONDITIONS

Action 72225

CONDITIONS

Operator: DEVON ENERGY PRODUCTION COMPANY, LP 333 West Sheridan Ave. Oklahoma City, OK 73102	OGRID: 6137
	Action Number: 72225
	Action Type: [C-103] Sub. Plugging (C-103P)

CONDITIONS

Created By	Condition	Condition Date
gcordero	None	1/14/2022