

<b>Well Name:</b> DIVIDE FEDERAL JW COM	<b>Well Location:</b> T17S / R24E / SEC 4 / NESW /	<b>County or Parish/State:</b> EDDY / NM
<b>Well Number:</b> 1	<b>Type of Well:</b> CONVENTIONAL GAS WELL	<b>Allottee or Tribe Name:</b>
<b>Lease Number:</b> NMNM7050	<b>Unit or CA Name:</b>	<b>Unit or CA Number:</b>
<b>US Well Number:</b> 300152264300X1	<b>Well Status:</b> Abandoned	<b>Operator:</b> EOG RESOURCES INCORPORATED

Accepted for record – NMOCD gc 1/7/2022

Subsequent Report

**Sundry ID:** 2650429

<b>Type of Submission:</b> Subsequent Report	<b>Type of Action:</b> Plug and Abandonment
<b>Date Sundry Submitted:</b> 12/28/2021	<b>Time Sundry Submitted:</b> 01:48
<b>Date Operation Actually Began:</b> 11/10/2021	

**Actual Procedure:** Please see attached subsequent P&A. Thank you.

SR Attachments

Actual Procedure

Divide\_Federal\_JW\_Com\_1\_12\_28\_21\_20211228134759.pdf

Received by OCD: 1/4/2022 7:55:43 AM

Page 2 of 5

<b>Well Name:</b> DIVIDE FEDERAL JW COM	<b>Well Location:</b> T17S / R24E / SEC 4 / NESW /	<b>County or Parish/State:</b> EDDY / NM
<b>Well Number:</b> 1	<b>Type of Well:</b> CONVENTIONAL GAS WELL	<b>Allottee or Tribe Name:</b>
<b>Lease Number:</b> NMNM7050	<b>Unit or CA Name:</b>	<b>Unit or CA Number:</b>
<b>US Well Number:</b> 300152264300X1	<b>Well Status:</b> Abandoned	<b>Operator:</b> EOG RESOURCES INCORPORATED

Operator Certification

I certify that the foregoing is true and correct. Title 18 U.S.C. Section 1001 and Title 43 U.S.C. Section 1212, make it a crime for any person knowingly and willfully to make to any department or agency of the United States any false, fictitious or fraudulent statements or representations as to any matter within its jurisdiction. Electronic submission of Sundry Notices through this system satisfies regulations requiring a submission of Form 3160-5 or a Sundry Notice.

<b>Operator Electronic Signature:</b> TINA HUERTA	<b>Signed on:</b> DEC 28, 2021 01:48 PM
<b>Name:</b> EOG RESOURCES INCORPORATED	
<b>Title:</b> Regulatory Specialist	
<b>Street Address:</b> 104 SOUTH FOURTH STREET	
<b>City:</b> Artesia	<b>State:</b> NM
<b>Phone:</b> (575) 748-4168	
<b>Email address:</b> tina_huerta@eogresources.com	

Field Representative

<b>Representative Name:</b>		
<b>Street Address:</b>		
<b>City:</b>	<b>State:</b>	<b>Zip:</b>
<b>Phone:</b>		
<b>Email address:</b>		

BLM Point of Contact

<b>BLM POC Name:</b> JAMES A AMOS	<b>BLM POC Title:</b> Acting Assistant Field Manager
<b>BLM POC Phone:</b> 5752345927	<b>BLM POC Email Address:</b> jamos@blm.gov
<b>Disposition:</b> Accepted	<b>Disposition Date:</b> 12/30/2021
<b>Signature:</b> James A. Amos	

**Divide Federal JW Com 1 – Sub P&A**  
**30-015-22643**  
**K-4-17S-24E**

11/10/21 - MIRU and NU BOP. Set a CIBP at 4591', tagged. BLM gave approval to dump cement on top. Dump bailed 5 sx Class C cement on top of CIBP to 4530', tagged.

11/11/21 – Tested casing for holes and no test in area from 2488' to 3314'. Spoke with Gilbert Espinoza with BLM and he approved to go ahead with bottom plugs. Perforated at 4064'. Attempted injection rate and pressured out at 500 psi. Spoke with Gilbert Espinoza with BLM and will drop down 50' below perfs and spot 25 sx. Pumped a 25 sx Class C cement plug from 4114'-3813', tagged. Gilbert Espinoza with BLM was good with tag.

11/12/21 – Perforated at 3706'. Established injection rate. Pumped a 45 sx Class C cement plug from 3706'-3512', tagged. Gilbert Espinoza with BLM was good with tag.

11/15/21 – Checked with Jim Amos with BLM-Carlsbad concerning spotting 45 sx cement in bad area, he was good with it. Pumped a 45 sx Class C cement plug from 3135'-3090', tagged. Spoke with Gilbert Espinoza with BLM and gave approval to spot another 45 sx cement. Pumped a 45 sx Class C cement plug from 3085'-2620', tagged.

11/16/21 – Attempted to test casing, still have a hole at 2517'. Gilbert Espinoza with BLM on location and discussed performing in/out squeeze on this leaving TOC at 2400'. Pressure tested backside to 500 psi, good. Squeezed with 25 sx Class C cement from 2517'-2356', tagged. Gilbert Espinoza with BLM on location when tagged and was good with it. Tested casing to 500 psi, good. Perforated at 1725'. Established injection rate. Squeezed with 35 sx Class C cement from 1725'-1584', tagged. Gilbert Espinoza with BLM was good with tag.

11/17/21 – Perforated at 1105'. Established injection rate. Squeezed with 30 sx Class C cement from 1105'-982', tagged. Gilbert Espinoza with BLM with good with tag. Perforated at 378'. Squeezed with 26 sx Class C cement from 378'-263', tagged. Gilbert with BLM witnessed tag.

11/18/21 – Perforated at 218'. Established injection rate. Squeezed with 60 sx Class C cement from 218' and circulated up to surface.

12/8/21 - Cut off wellhead. Installed dry hole marker as per BLM. Cover cellar and cut off anchors. **WELL IS PLUGGED AND ABANDONED.**

# Divide Federal JW Com 1

Plug 10

Plug 9

Plug 8

Plug 7

Plug 6

Plug 5

Plug 4

Plug 3

Plug 2

TOC by CBL @ 4014'

Plug 1

Existing Wolfcamp Perfs: 4641' - 4727'

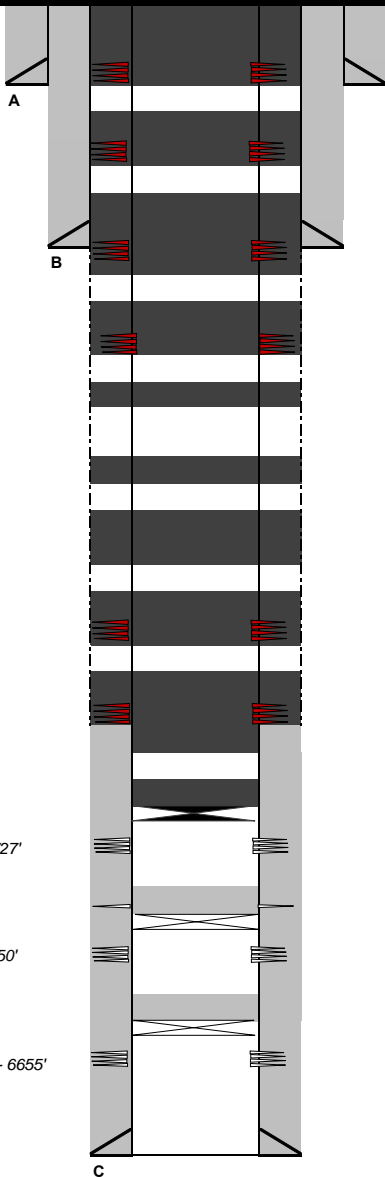
Existing CIBP w/ 20' cmt @ 5000'

Sqz'd Perfs

Existing Wolfcamp Perfs: 5145' - 5150'

Existing CIBP w/ 25' cmt @ 6100'

Existing Cisco Canyon Perfs: 6120' - 6655'



PBTD: 4,850 MD  
TD: 7,141 MD

Sec-TWN-RNG: Sec. 4-17S-24E  
FOOTAGES: 660' FNL & 1980' FEL

API: 30-015-22643  
GL: 3755  
KB:

## CASING DETAIL

#	HOLE SIZE	SIZE	WGHT	GRADE	Top	Bottom	Sx Cmt	Circ/TOC	TOC Method
A	17 1/2	13 3/8	48	K-55	0	168	125	Circ	
B	12 1/4	8 5/8	24	K-55	0	1,050	515	Circ	
C	7 7/8	4 1/2	10.5	K-55	0	6,906	625	4014	CBL

## FORMATION TOPS

	Formation	Top (MD)		Formation	Top (MD)		Formation	Top (MD)	
	SA	328		Cisco	5766		Miss Ls	7091	
	Glorieta	1667		Canyon	6442				
	Tubb	3020		Strawn	6734				
	Abo	3638		Atoka	6898				
	WC Ls	4631		Chester Ls	6975				

## TUBING DETAIL

#	Joints	Description	Length	OD	ID	Grade	Wt (lb/ft):	Top (ftKB):	Btm (ftKB):
		2 3/8							4578
		Packer							4587

## PLUGS

#	SX	Class	Top	Bottom	Tag	Notes	
1	5	C	4530	4591	Y	CIBP	
2	25	C	3813	4114	Y	Perforate	
3	45	C	3512	3706	Y	Perforate	
4	45	C	3090	3135	Y		
5	45	C	2620	3085	Y		
6	25	C	2356	2517	Y		
7	35	C	1584	1725	Y	Perforate	
8	30	C	982	1105	Y	Perforate	
9	26	C	263	378	Y	Perforate	
10	60	C	0	218	N	Perforate	

## PERFORATION DETAIL

	Formation	Top	Bottom						
	Cisco Canyon	6,120	6,655						
	Wolfcamp	4,641	5,150						

## ADDITIONAL DETAIL

1/4/22

**District I**  
1625 N. French Dr., Hobbs, NM 88240  
Phone:(575) 393-6161 Fax:(575) 393-0720  
**District II**  
811 S. First St., Artesia, NM 88210  
Phone:(575) 748-1283 Fax:(575) 748-9720  
**District III**  
1000 Rio Brazos Rd., Aztec, NM 87410  
Phone:(505) 334-6178 Fax:(505) 334-6170  
**District IV**  
1220 S. St Francis Dr., Santa Fe, NM 87505  
Phone:(505) 476-3470 Fax:(505) 476-3462

State of New Mexico  
Energy, Minerals and Natural Resources  
Oil Conservation Division  
1220 S. St Francis Dr.  
Santa Fe, NM 87505

CONDITIONS  
  
Action 70099

CONDITIONS

Operator: EOG RESOURCES INC P.O. Box 2267 Midland, TX 79702	OGRID: 7377
	Action Number: 70099
	Action Type: [C-103] Sub. Plugging (C-103P)

CONDITIONS

Created By	Condition	Condition Date
gcordero	None	1/7/2022