

Well Name: JICARILLA 430	Well Location: T23N / R5W / SEC 36 / NENW /	County or Parish/State: SANDOVAL / NM
Well Number: 6	Type of Well: OIL WELL	Allottee or Tribe Name: JICARILLA APACHE
Lease Number: JIC430	Unit or CA Name:	Unit or CA Number:
US Well Number: 3004320757	Well Status: Oil Well Shut In	Operator: DJR OPERATING LLC

Notice of Intent

Sundry ID: 2651196

Type of Submission: Notice of Intent	Type of Action: Plug and Abandonment
Date Sundry Submitted: 01/05/2022	Time Sundry Submitted: 11:39
Date proposed operation will begin: 01/05/2022	

Procedure Description: DJR Operating, LLC requests permission to Plug & Abandon the subject well according to the attached Procedure, Current & Proposed Wellbore Diagram and Reclamation Plan.

Surface Disturbance

Is any additional surface disturbance proposed?: No

NOI Attachments

Procedure Description

- Jicarilla_430_6_Reclamation_Plan_20220105113753.pdf
- Jicarilla_430_6_PA_Procedure_20220105113753.pdf
- Jicarilla_430_6_Proposed_WBD_20220105113752.pdf
- Jicarilla_430_6_Current_WBD_20220105113752.pdf

Well Name: JICARILLA 430	Well Location: T23N / R5W / SEC 36 / NENW /	County or Parish/State: SANDOVAL / NM
Well Number: 6	Type of Well: OIL WELL	Allottee or Tribe Name: JICARILLA APACHE
Lease Number: JIC430	Unit or CA Name:	Unit or CA Number:
US Well Number: 3004320757	Well Status: Oil Well Shut In	Operator: DJR OPERATING LLC

Conditions of Approval

Additional Reviews

General_Requirement_PxA_20220112150521.pdf
2651196_NOIA_430_6_3004520757_KR_01122022_20220112150502.pdf
23N05W36CKg_Jicarilla_430_6_20220112141229.pdf

Operator Certification

I certify that the foregoing is true and correct. Title 18 U.S.C. Section 1001 and Title 43 U.S.C. Section 1212, make it a crime for any person knowingly and willfully to make to any department or agency of the United States any false, fictitious or fraudulent statements or representations as to any matter within its jurisdiction. Electronic submission of Sundry Notices through this system satisfies regulations requiring a submission of Form 3160-5 or a Sundry Notice.

Operator Electronic Signature: SHAW-MARIE FORD	Signed on: JAN 05, 2022 11:38 AM
Name: DJR OPERATING LLC	
Title: Regulatory Specialist	
Street Address: 1 Road 3263	
City: Aztec	State: NM
Phone: (505) 632-3476	
Email address: sford@djrlc.com	

Field Representative

Representative Name:		
Street Address:		
City:	State:	Zip:
Phone:		
Email address:		

BLM Point of Contact

BLM POC Name: KENNETH G RENNICK	BLM POC Title: Petroleum Engineer
BLM POC Phone: 5055647742	BLM POC Email Address: krennick@blm.gov
Disposition: Approved	Disposition Date: 01/12/2022
Signature: Kenneth Rennick	

Plug and Abandonment Procedure
for
DJR Operating, LLC
Jicarilla 430 6
API # 30-043-20757
NE/NW, Unit C, Sec. 36, T23N, R5W
Sandoval County, NM

I.

1. Hold Pre job meeting, comply with all NMOCD, BLM and environmental regulations.
2. MIRU prep rig.
3. Check and record tubing, casing and bradenhead pressures.
4. Remove existing piping from casing valve, RU blow lines from casing valves and blow down casing pressure. Kill well as necessary. Ensure that well is dead or on a vacuum.
5. MIRU hot oil unit, pump hot water to clear tubing of paraffin.
6. Unset TAC.
7. ND WH, NU BOP, function test BOP.
8. Trip out of hole with rods and tubing. LD rods and tubing to be sent in for storage/salvage.
9. RDMO prep rig to next location.

II.

10. MIRU P&A rig and equipment.
11. PU workstring, TIH with bit and scraper, make sure that the bit and scraper will go below 6050'. TOOH.
12. Plug 1. Lower Mancos perms. PU and TIH with 4-1/2" CR. Set at 6050'. Pressure test tubing to 1000 psi. RU cement equipment. Squeeze below CR with 10 sx. Spot 50' plug on top of CR. PU and pump water to ensure tubing is clear.

13. Plug 2. Gallup top and perfs: Mix and pump a balanced plug from 5641-5120'. Pump water to ensure tubing is clear.
14. Plug 3: Mancos top and upper perfs: Mix and pump a balanced plug from 4611-4420'. Pump water to ensure tubing is clear. WOC. Tag TOC. Roll hole and pressure test casing to 600 psi. If test fails, contact engineering. TOOH.
15. RU and RIH with wireline and run CBL from top of cement as tagged in Step 14 to surface. Electronic copy of CBL to be sent to: Ken Rennick krennick@blm.gov, Monica Kuehling mkuehling@state.nm.gov, Loren Diede DJR, ldiede@djrlc.com, and Scott Lindsay, DJR, slindsay@djrlc.com. P&A procedure may be modified as determined by the casing pressure test and the CBL log.
16. Plug 4. Mesa Verde: Mix and pump a balanced plug from 3672-3572'. Pump water to ensure tubing is clear.
17. Plug 5: Chacra: Perf holes at 2566'. Set CR at 2516'. Squeeze below CR to bring TOC to 2466' outside. Spot 50' plug on top of CR.
18. Plug 6. Pictured Cliffs, Fruitland, Kirtland, and Ojo Alamo: Mix and pump a balanced plug from 2154-1595'. Pump water to ensure tubing is clear.
19. Plug 7: Nacimiento: Perf holes at 1303'. Set CR at 1253'. Squeeze below CR to bring TOC outside to 1203'. Spot 50' plug on top of CR. Pump water to ensure that tubing is clear.
20. Plug 8: Surface casing shoe and surface: Perf holes at 273'. Tie onto 4-1/2" casing and mix and pump sufficient cement to bring cement to surface inside and outside 4-1/2" casing.
21. RD cementing equipment. Cut off wellhead, fill any exposed annulus with cement as necessary. **Install SURFACE P&A marker as per BIA requirements.** Record GPS coordinates for P&A marker and the Final P&A Report. Photograph the P&A marker and attach to the report.
22. RD and MO all rig and cement equipment. Assure that location is free of trash and contamination before moving off.
23. Send all reports and attachments to DJR Aztec office for regulatory filings.

Note: All cement is to be Class G mixed at 15.8 ppg, yield 1.15 cu ft / sx. Cement volumes are based on inside capacities + 50' excess and outside capacities + 100% excess. Surface P&A marker is to be installed at surface, 12"x18", and exposed at the reclaimed GL surface.

Current Wellbore Diagram

DJR Operating, LLC

Jicarilla 430 6

API # 30-043-20757

NE/NW, Unit C, Sec 36, T23N, R5W
Sandoval County, NM

GL 6810'
KB 6823'
Spud Date 5/1/1985

SURF CSG

Hole size 12.25"
Csg Size: 8.625"
Wt: 20#
Grade: J-55
ID: 8.191"
Depth 223'
Csq cap ft³: 0.3659
TOC: Surf

FORMATION TOPS

Nacimiento	1253'
Ojo Alamo	1645'
Kirtland	1860'
Fruitland	1975'
Pictured Cliffs	2104'
Lewis	2212'
Chacra	2516'
Mesa Verde	3622'
Mancos	4495'
Gallup	5321'

PROD CSG

Hole size 6.25"
Csg Size: 4.5"
Wt: 10.5#
Grade: J-55
ID: 4.052"
Depth 6188'
Csq cap ft³: 0.0895
Csq/Csq Ann ft³: 0.2555
Csq/OH cap ft³: 0.1026

TOC: Stg 1 5098' (CBL)

TOC: Stg 2 3950' (TS)
Plus squeeze volume.

DV Tool at +/-4684'

PBTD 6146'
TD 6189'

Prod Tubing Detail:

2-3/8": MA, PS, SN, 4 jts., TAC, 183 jts.
SN 6021'. TAC 5891'. EOT 6059'.

Rod Detail

1-1/2"x2"x16' RWAC pump, 240x3/4"
rods, 4'x3/4" sub, 1-1/4"x22' polished rod
with 8' liner.

Sqz hole at 2250'
Sqz'd with 255 sx.

Sqz holes at 3910', 3782', 3600'
Sqz'd with 200 sx.

Perfs 4470-4561'. Sqz'd perfs 4470-4505'.
Open perfs at 4555', 4557', 4559', 4561'

Perfs 5170-5591'

Perfs 6064-6074'

Proposed P&A Wellbore Diagram

DJR Operating, LLC

Jicarilla 430 6

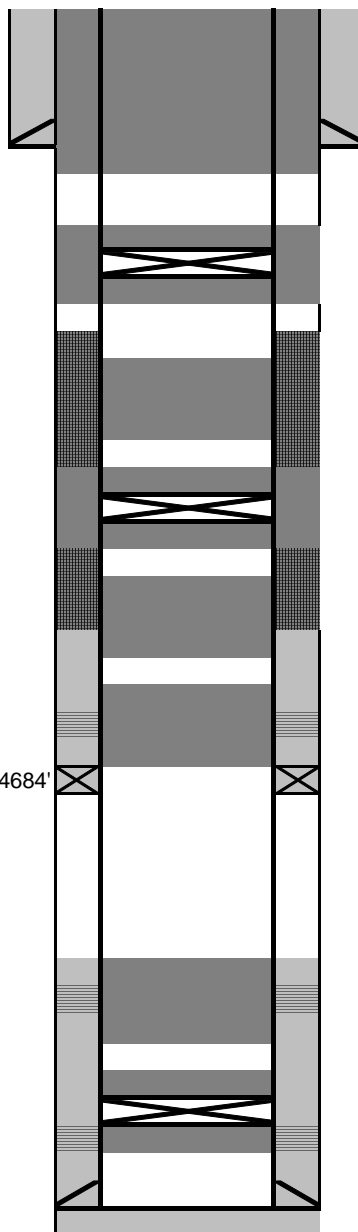
API # 30-043-20757

NE/NW, Unit C, Sec 36, T23N, R5W
Sandoval County, NMGL 6810'
KB 6823'
Spud Date 5/1/1985SURF CSGHole size 12.25"
Csg Size: 8.625"
Wt: 20#
Grade: J-55
ID: 8.191"
Depth 223'
Csg cap ft3: 0.3659
TOC: SurfFORMATION TOPSNacimiento 1253'
Ojo Alamo 1645'
Kirtland 1860'
Fruitland 1975'
Pictured Cliffs 2104'
Lewis 2212'
Chacra 2516'
Mesa Verde 3622'
Mancos 4495'
Gallup 5321'PROD CSGHole size 6.25"
Csg Size: 4.5"
Wt: 10.5#
Grade: J-55
ID: 4.052"
Depth 6188'
Csg cap ft3: 0.0895
Csg/Csg Ann ft3: 0.2555
Csg/OH cap ft3: 0.1026

TOC: Stg 1 5098' (CBL)

TOC: Stg 2 3950' (TS)
Plus squeeze volume.

DV Tool at +/-4684'

PBTD 6146'
TD 6189'

Plug 8: Surface casing shoe and surface plug. Perf holes at 273'. Tie onto 4-1/2" casing and mix and pump sufficient cement to bring TOC to surface inside and

Plug 7: Nacimiento: Perf holes at 1303'. Set CR at 1253'. Sqz below CR to bring TOC to 1203' inside and outside.

Plug 6: Pictured Cliffs, Fruitland, Kirtland, and Ojo Alamo: Spot balanced plug from 2154-1595'.

Plug 5: Chacra: Perf holes at 2566'. Set CR at 2516'. Sqz below CR to bring TOC to 2466' inside and outside.

Plug 4: Mesaverde: Spot balanced plug from 3672-3572'.

Plug 3: Mancos: Spot balanced plug from 4611-4420' (to cover old perf top).

Plug 2: Gallup top and perfs: Spot balanced plug from 5641-5120'.

Plug 1: Lower Mancos perfs: Set CR at 6050'. Sqz below CR with 10 sx. Spot 50' plug on top of CR from 6050' to 6000'.

All plugs to be Class G cement mixed at 15.8 ppg and 1.15 ft³/sk

**GENERAL REQUIREMENTS FOR
PERMANENT ABANDONMENT OF WELLS ON FEDERAL AND INDIAN LEASES
FARMINGTON FIELD OFFICE**

1.0 The approved plugging plans may contain variances from the following minimum general requirements.

1.1 Modification of the approved plugging procedure is allowed only with the prior approval of the Authorized Officer, Farmington Field Office.

1.2 Requirements may be added to address specific well conditions.

2.0 Materials used must be accurately measured. (densometer/scales)

3.0 A tank or lined pit must be used for containment of any fluids from the wellbore during plugging operations and all pits are to be fenced with woven wire. These pits will be fenced on three sides and once the rig leaves location, the fourth side will be fenced.

3.1 Pits are not to be used for disposal of any hydrocarbons. If hydrocarbons are present in the pit, the fluids must be removed prior to filling in.

4.0 All cement plugs are to be placed through a work string. Cement may be bull-headed down the casing with prior approval. Cement caps on top of bridge plugs or cement retainers may be placed by dump bailer.

4.1 The cement shall be as specified in the approved plugging plan.

4.2 All cement plugs placed inside casing shall have sufficient volume to fill a minimum of 100' of the casing, or annular void(s) between casings, plus an excess volume sufficient to provide for 50 linear feet of fill above the plug.

4.3 Surface plugs may be no less than 50' in length.

4.4 All cement plugs placed to fill annular void(s) between casing and the formation shall be of sufficient volume to fill a minimum of 100' of the annular space plus 100% excess, calculated using the bit size, or 100' of annular capacity, determined from a caliper log, plus an excess volume sufficient to provide for 50 linear feet of fill above the plug.

4.5 All cement plugs placed to fill an open hole shall be of sufficient volume to fill a minimum of 100' of hole, as calculated from a caliper log, plus an excess volume sufficient to provide for 50 linear feet of fill above the plug. In the absence of a caliper log, an excess of 100% shall be required.

4.6 A cement bond log or other accepted cement evaluation tool is required to be run if one had not been previously ran or cement did not circulate to surface during the original casing cementing job or subsequent cementing jobs.

5.0 All cement plugs spotted across, or above, any exposed zone(s), when; the wellbore is not full of fluid or the fluid level will not remain static, and in the case of lost circulation or partial returns during cement placement, shall be tested by tagging with the work string.

- 5.1 The top of any cement plug verified by tagging must be at or above the depth specified in the approved plan, without regard to any excess.
- 5.2 Testing will not be required for any cement plug that is mechanically contained by use of a bridge plug and/or cement retainer, if casing integrity has been established.
- 5.3 Any cement plug which is the only isolating medium, for a fresh water interval or a zone containing a prospectively valuable deposit of minerals, shall be tested by tagging.
- 5.4 If perforations are required below the surface casing shoe, a 30 minute minimum wait time will be required to determine if gas and/or water flows are present. If flow is present, the well will be shut-in for a minimum of one hour and the pressure recorded. Short or long term venting may be necessary to evacuate trapped gas. **If only a water flow occurs with no associated gas, shut well in and record the pressures. Contact the Engineer as it may be necessary to change the cement weight and additives.**

6.0 Before setting any cement plugs the hole needs to be rolled. All wells are to be controlled by means of a fluid that is to be of a weight and consistency necessary to stabilize the wellbore. This fluid shall be left in place as filler between all plugs.

- 6.1 Drilling mud may be used as the wellbore fluid in open hole plugging operations.
- 6.2 The wellbore fluid used in cased holes shall be of sufficient weight to balance known pore pressures in all exposed formations.

7.0 A blowout preventer and related equipment (BOPE) shall be installed and tested prior to working in a wellbore with any exposed zone(s); (1) that are over pressured, (2) where the pressures are unknown, or (3) known to contain H₂S.

8.0 Within 30 days after plugging work is completed, file a Sundry Notice, Subsequent Report of Abandonment (Form 3160-5), five copies, with the Field Manager, Bureau of Land Management, 6251 College Blvd., Suite A, Farmington, NM 87402. The report should show the manner in which the plugging work was carried out, the extent, by depth(s), of cement plugs placed, and the size and location, by depth(s), of casing left in the well. Show date well was plugged.

9.0 All permanently abandoned wells are to be marked with a permanent monument as specified in 43 CFR 3162.6(d). Unless otherwise approved.

10.0 If this well is located in a Specially Designated Area (SDA), compliance with the appropriate seasonal closure requirements will be necessary.

All of the above are minimum requirements. Failure to comply with the above conditions of approval may result in an assessment for noncompliance and/or a Shut-in Order being issued pursuant to 43 CFR 3163.1. You are further advised that any instructions, orders or decisions issued by the Bureau of Land Management are subject to administrative review pursuant to 43 CFR 3165.3 and appeal pursuant to 43 CFR 3165.4 and 43 CFR 4.700.

(October 2012 Revision)

**UNITED STATES DEPARTMENT OF THE INTERIOR
BUREAU OF LAND MANAGEMENT
FARMINGTON DISTRICT OFFICE
6251 COLLEGE BLVD.
FARMINGTON, NEW MEXICO 87402**

AFMSS 2 Sundry ID 2651196

Attachment to notice of Intention to Abandon

Well: Jicarilla 430 6

CONDITIONS OF APPROVAL

1. Plugging operations authorized are subject to the attached "General Requirements for Permanent Abandonment of Wells on Federal and Indian Lease."
2. Farmington Office is to be notified at least 24 hours before the plugging operations commence at (505) 564-7750.

You are also required to place cement excesses per 4.2 and 4.4 of the attached General Requirements.

Office Hours: 7:45 a.m. to 4:30 p.m.

K. Rennick 1/12/2022

BLM FLUID MINERALS P&A Geologic Report

Date Completed: 1/12/2022

Well No. Jicarilla 430 #6 (API# 30-043-20757)		Location	990	FNL	&	1650	FWL
Lease No. JIC430		Sec. 36	T23N			R05W	
Operator DJR Operating, LLC		County	Sandoval		State	New Mexico	
Total Depth 6189'	PBTD 6146'	Formation Gallup, Mancos					
Elevation (GL) 6810'		Elevation (KB) 6823'					

Geologic Formations	Est. Top	Est. Bottom	Log Top	Log Bottom	Remarks
San Jose Fm			Surface	1253	Surface/freshwater sands
Nacimiento Fm			1253	1645	Freshwater sands
Ojo Alamo Ss			1645	1860	Aquifer (possible freshwater)
Kirtland Shale			1860	1960	
Fruitland Fm			1960	2104	Coal/Gas/Possible water
Pictured Cliffs Ss			2104	2212	Gas
Lewis Shale			2212	2516	
Chacra			2516	3622	Gas
Cliff House Ss			3622	3655	Water/Possible gas
Menefee Fm			3655	4260	Coal/Ss/Water/Possible O&G
Point Lookout Ss			4260	4495	Probable water/Possible O&G
Mancos Shale			4495	5321	
Gallup			5321	PBTD	O&G/Water
Greenhorn					
Graneros Shale					
Dakota Ss					O&G/Water

Remarks:

P & A

- BLM pick for the Fruitland formation varies from Operator submission. Plug proposed in P&A procedure for the Fruitland is adequate to cover both picks.
- The plugs proposed in the P&A procedure will adequately protect any freshwater sands in this well bore.
- Gallup perms 5170' – 5591' and 6064' – 6074'. Mancos perms 4470' – 4561'.

Reference Well:

1) **Formation Tops**
Same

Prepared by: Chris Wenman

District I
1625 N. French Dr., Hobbs, NM 88240
Phone:(575) 393-6161 Fax:(575) 393-0720
District II
811 S. First St., Artesia, NM 88210
Phone:(575) 748-1283 Fax:(575) 748-9720
District III
1000 Rio Brazos Rd., Aztec, NM 87410
Phone:(505) 334-6178 Fax:(505) 334-6170
District IV
1220 S. St Francis Dr., Santa Fe, NM 87505
Phone:(505) 476-3470 Fax:(505) 476-3462

State of New Mexico
Energy, Minerals and Natural Resources
Oil Conservation Division
1220 S. St Francis Dr.
Santa Fe, NM 87505

CONDITIONS

Action 72166

CONDITIONS

Operator: DJR OPERATING, LLC 1 Road 3263 Aztec, NM 87410	OGRID: 371838
	Action Number: 72166
	Action Type: [C-103] NOI Plug & Abandon (C-103F)

CONDITIONS

Created By	Condition	Condition Date
kpickford	Notify NMOCD 24 Hours Prior to beginning operations	1/21/2022
kpickford	CBL required	1/21/2022
kpickford	Adhere to BLM approved COAs and plugs. See GEO report	1/21/2022