

Submit 1 Copy To Appropriate District Office  
 District I – (575) 393-6161  
 1625 N. French Dr., Hobbs, NM 88240  
 District II – (575) 748-1283  
 811 S. First St., Artesia, NM 88210  
 District III – (505) 334-6178  
 1000 Rio Brazos Rd., Aztec, NM 87410  
 District IV – (505) 476-3460  
 1220 S. St. Francis Dr., Santa Fe, NM 87505

State of New Mexico  
 Energy, Minerals and Natural Resources

Form C-103  
 Revised July 18, 2013

OIL CONSERVATION DIVISION  
 1220 South St. Francis Dr.  
 Santa Fe, NM 87505

SUNDRY NOTICES AND REPORTS ON WELLS (DO NOT USE THIS FORM FOR PROPOSALS TO DRILL OR TO DEEPEN OR PLUG BACK TO A DIFFERENT RESERVOIR. USE "APPLICATION FOR PERMIT" (FORM C-101) FOR SUCH PROPOSALS.) 1. Type of Well: Oil Well <input checked="" type="checkbox"/> Gas Well <input type="checkbox"/> Other <input type="checkbox"/>		WELL API NO. <b>30-025-08819</b>
2. Name of Operator <b>Cameron Oil &amp; Gas, Inc.</b>		5. Indicate Type of Lease STATE <input checked="" type="checkbox"/> FEE <input type="checkbox"/>
3. Address of Operator <b>P.O. Box 1089, Eunice, NM 88231</b>		6. State Oil & Gas Lease No. <b>B015060009</b>
4. Well Location Unit Letter <b>F</b> : <b>1650</b> feet from the <b>North</b> line and <b>2310</b> feet from the <b>West</b> line Section <b>7</b> Township <b>22-S</b> Range <b>36-E</b> NMPM County <b>Lea</b>		7. Lease Name or Unit Agreement Name <b>State 157 B</b>
11. Elevation (Show whether DR, RKB, RT, GR, etc.) <b>3823' G.R.</b>		8. Well Number <b>002</b> 9. OGRID Number <b>181109</b> 10. Pool name or Wildcat <b>[33820] JALMAT; TAN-YATES-7 RVRS</b>

12. Check Appropriate Box to Indicate Nature of Notice, Report or Other Data

NOTICE OF INTENTION TO:		SUBSEQUENT REPORT OF:	
PERFORM REMEDIAL WORK <input type="checkbox"/>	PLUG AND ABANDON <input type="checkbox"/>	REMEDIAL WORK <input type="checkbox"/>	ALTERING CASING <input type="checkbox"/>
TEMPORARILY ABANDON <input type="checkbox"/>	CHANGE PLANS <input type="checkbox"/>	COMMENCE DRILLING OPNS. <input type="checkbox"/>	<b>P AND A</b> <input checked="" type="checkbox"/>
PULL OR ALTER CASING <input type="checkbox"/>	MULTIPLE COMPL <input type="checkbox"/>	CASING/CEMENT JOB <input type="checkbox"/>	PNR <input type="checkbox"/>
DOWNHOLE COMMINGLE <input type="checkbox"/>			
CLOSED-LOOP SYSTEM <input type="checkbox"/>			
OTHER: <input type="checkbox"/>		OTHER <input type="checkbox"/>	

13. Describe proposed or completed operations. (Clearly state all pertinent details, and give pertinent dates, including estimated date of starting any proposed work). SEE RULE 19.15.7.14 NMAC. For Multiple Completions: Attach wellbore diagram of proposed completion or recompletion.

**PLUG AND ABANDON PROCEDURE – ORDERED P&A'D BY STATE LAND OFFICE**

MIRU Pulling unit. Remove horsehead, install BOP & pull rods – tag bottom w/ tubing (~3680') and ready mud & cement crew.  
 (Note: CIBP @ 3700' w/ 20' cement cap set in 1975.)

Load hole w/ 9.5# MLF and spot cement as follows:

Spot 45 sx 3660 feet to 3390 feet - TAG;  
 Perf 4 squeeze holes @ 1650 feet (top of salt) – attempt to squeeze, could not pump into.  
 Spot 30 sx 1700 feet to 1500 feet - TAG;  
 Spot 65+ sx 350 feet to Surface.

**NOTE: FULL PROCEDURE AND WELLBORE DIAGRAM ATTACHED.**

Install P&A Marker, remove all equipment and junk, cut anchors, level and clean location  
 Notify NMOCD for final P&A release inspection.

Spud Date:

**4/09/1938**

Rig Release Date:

**11/17/2021**

I hereby certify that the information above is true and complete to the best of my knowledge and belief.

SIGNATURE



TITLE **Agent/consultant**

DATE **12/07/2021**

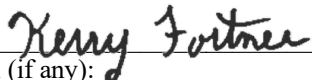
Type or print name

E-mail address: **ben@sosconsulting.us**

PHONE: **903-488-9850**

**For State Use Only**

APPROVED BY:



TITLE **Compliance Officer A**

DATE **2/2/22**

Conditions of Approval (if any):

**575-263-6633**

## *Cameron Oil Company*

### **State 157 B #2, 30-025-08819, Well Plugging**

Pursuant to NM State Land Office directive, the well was plugged and abandoned as follows:

**11/08/2021** – Installed BOP, RIH and tag bottom at 3660'. POOH w/ tubing & shut down.

**11/09/2021** – RU cement equipment – tested tubing going in hole, found hole @1030', replaced joint, left hanging at 3650'.

**11/10/2021** – Spot 45 sx at 3650'; WOC 4 hrs, tag at 3390'. Spot/ loaded w/ 9.5# MLF to 1650' & perf at 1650'.

**11/11/2021** – Spot 30 sx cmt at 1700'. Attempt to squeeze – could not up to 500 psi. WOC 5.5 hrs, tag at 1500' & shut down.

**11/16/2021** - Perforated @ 300' then went in hole to 1500' pumped 48 bbl spacer mud (hole loaded), pulled out of hole, took off BOP and put on flange. Dug out around well head couldn't find surface head so installed top flange and tried to pump into perfs - corrosion near surface of 7" prevented pressuring up. RIH w/ 11 jts (approx. 350') and shut well in; will pump cement in the morning and set top plug.

#### **11/17/2021**

Mixed and pumped 65 sx cement, filled 7" casing to surface with cement. Laid down tubing and topped off 7" to surface. Jack with 3G Well Service reported all events and got approval from Kerry with NMOCD. Installed 4' P&A hole marker. Cleaned location – ready for OCD P&A Release inspection.

*Moved to State 157 B #1 location.*



## P&A SCHEMATIC - SUBSEQUENT REPORT

### State 157 B Well No.2

(Worked performed 11/08 to 11/17/2021)

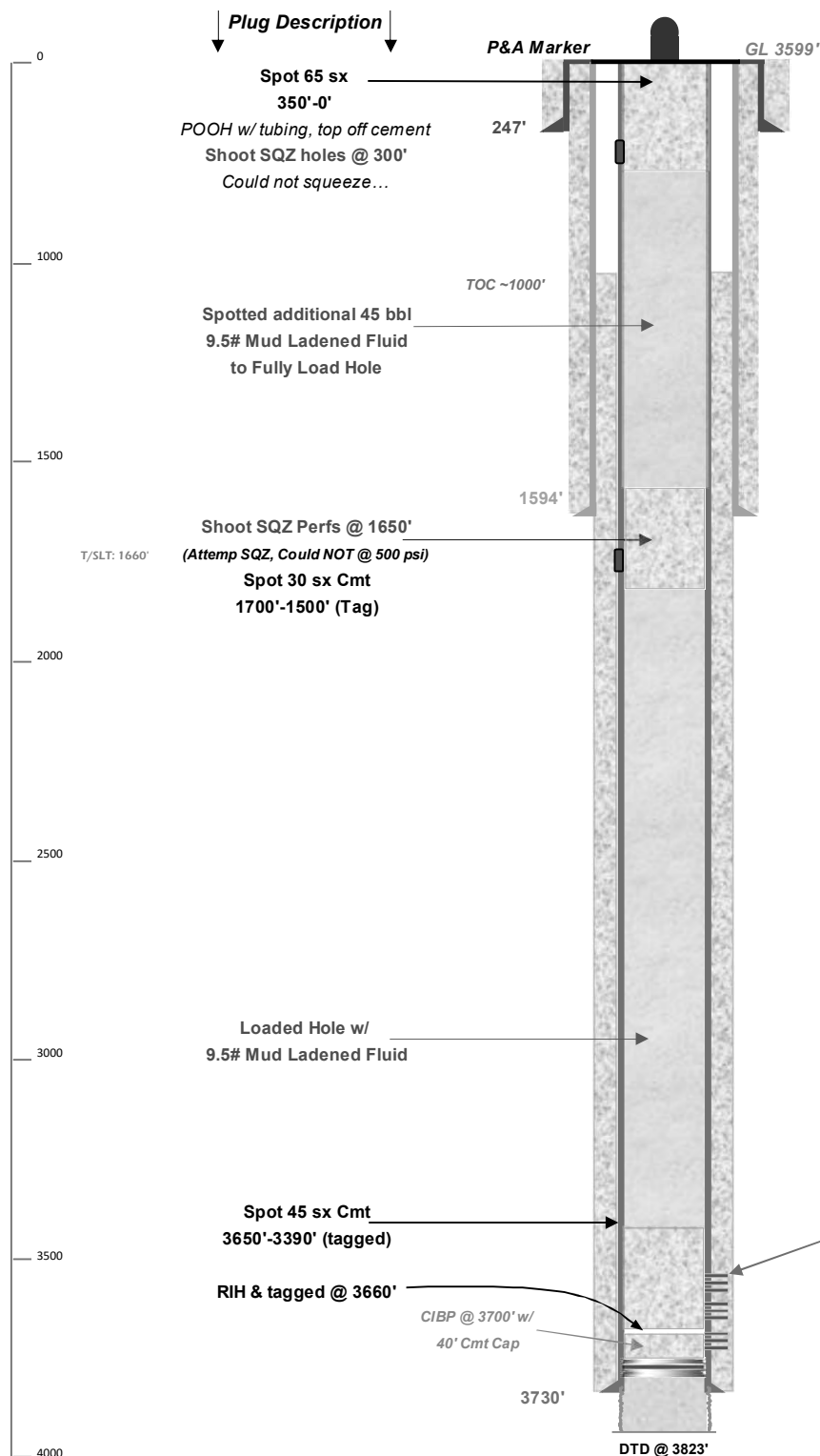
**API 30-025-08819**

1650' FNL & 2310' FWL, SEC. 7-T22S-R36E  
LEA COUNTY, NEW MEXICO

**Jalmat; Tnsi-Yts-7 Rs (33820)**

Spud Date: 4/09/1938

P&A Date: 11/17/2021



#### Surface Casing

13.0" Csg. (16.0" Hole) @ 247'

200 sx - 40 sx Circulated to Surface

#### Intermediate Casing

9.625" Csg. (12.0" Hole) @ 1594'

400 sx - Circulated to Surface

#### **PLUG AND ABANDON PROCEDURE** **ORDERED P&A'D BY STATELAND OFFICE**

MIRU Pulling unit. Remove horsehead, install BOP & pull rods – tag bottom w/ tubing (~3600') and ready mud & cement crew.  
(Note: CIBP @ 3700' w/ 20' cement cap set in 1975.)

#### **Load hole w/ 9.5# MLF and spot cement as follows:**

RIH and tagged existing @ 3660 feet.  
Spot 45 sx 3660 feet to 3390 feet;  
Perf 4 squeeze holes @ 1650 feet (top of salt) – attempt to squeeze - could not;  
Spot 30 sx 1700 feet to 1500 feet - TAG;  
Dug down at surface to expose casing head flange - corroded away - replaced flange.  
Perf squeeze holes @ 300 feet but remaining surface corrosion prevented pressure-up for squeeze.  
Pumped spacer 48 bbl MLF to fully load hole.  
OCD approved spotting cement to Surface - 65+ sx to fill from 350 feet.

Install P&A Marker, remove all equipment and junk, cut anchors, level and clean location.

Notify NMOCD for final P&A release inspection.

YTS-7RVR Perfs: 3539'-3638'  
(3539'-46'; 3550'-68'; 3610'-26'; 3630'-38' - 4 sets)

#### Production Casing

7.0", 17.0# J-55 Csg. (8.75" Hole) @ 3730'

250 sx - TOC @ 1000' by Calc.

Drawn by: Ben Stone, 12/06/2021



## *Cameron Oil Company*

### **State 157 B #2, 30-025-08819, Well Plugging**

Pursuant to NM State Land Office directive, the well was plugged and abandoned as follows:

**11/08/2021** – Installed BOP, RIH and tag bottom at 3660'. POOH w/ tubing & shut down.

**11/09/2021** – RU cement equipment – tested tubing going in hole, found hole @1030', replaced joint, left hanging at 3650'.

**11/10/2021** – Spot 45 sx at 3650'; WOC 4 hrs, tag at 3390'. Spot/ loaded w/ 9.5# MLF to 1650' & perf at 1650'.

**11/11/2021** – Spot 30 sx cmt at 1700'. Attempt to squeeze – could not up to 500 psi. WOC 5.5 hrs, tag at 1500' & shut down.

**11/16/2021** - Perforated @ 300' then went in hole to 1500' pumped 48 bbl spacer mud (hole loaded), pulled out of hole, took off BOP and put on flange. Dug out around well head couldn't find surface head so installed top flange and tried to pump into perfs - corrosion near surface of 7" prevented pressuring up. RIH w/ 11 jts (approx. 350') and shut well in; will pump cement in the morning and set top plug.

#### **11/17/2021**

Mixed and pumped 65 sx cement, filled 7" casing to surface with cement. Laid down tubing and topped off 7" to surface. Jack with 3G Well Service reported all events and got approval from Kerry with NMOCD. Installed 4' P&A hole marker. Cleaned location – ready for OCD P&A Release inspection.

*Moved to State 157 B #1 location.*



## P&A SCHEMATIC - SUBSEQUENT REPORT

### State 157 B Well No.2

(Worked performed 11/08 to 11/17/2021)

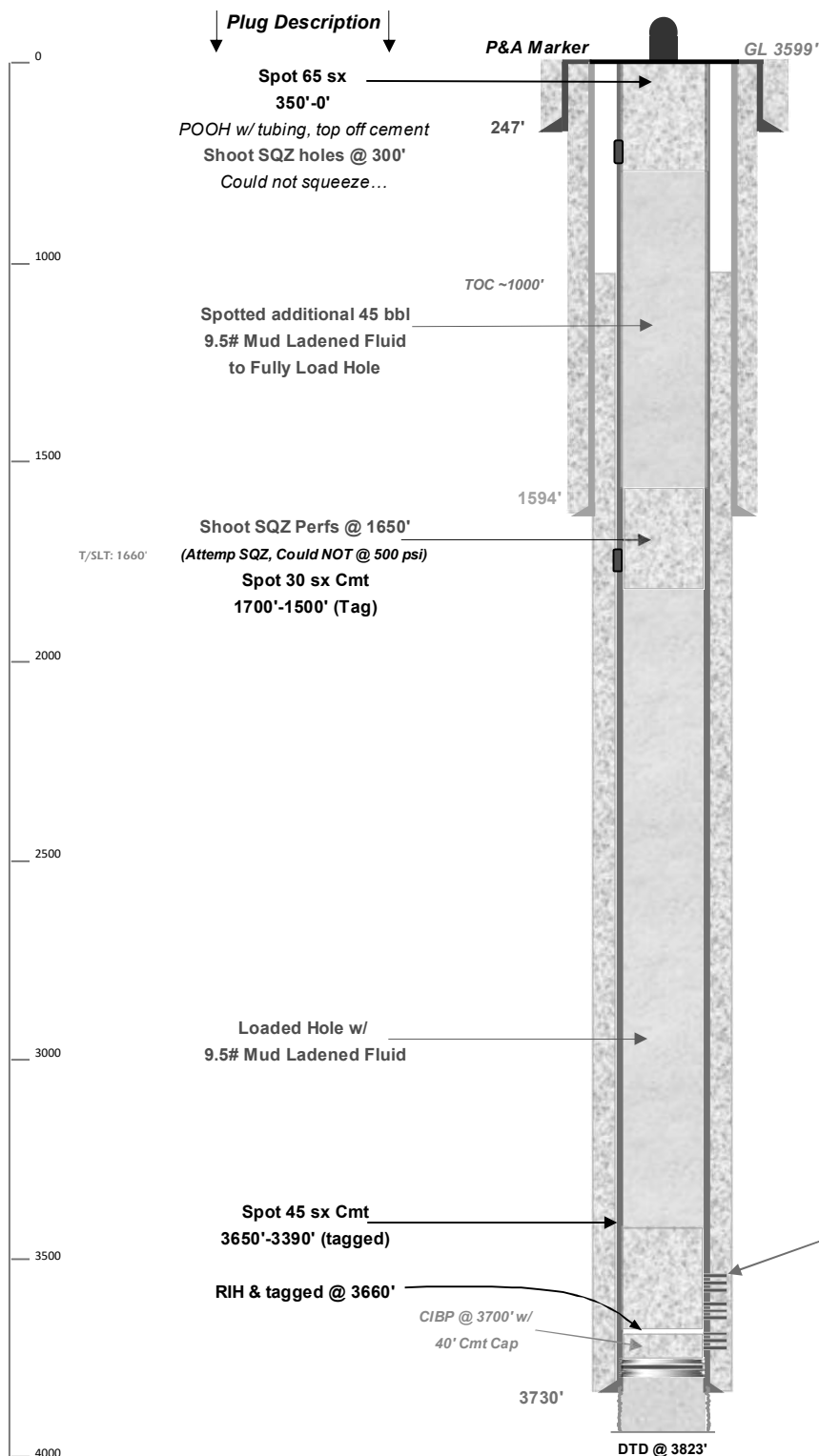
API 30-025-08819

1650' FNL & 2310' FWL, SEC. 7-T22S-R36E  
LEA COUNTY, NEW MEXICO

Jalmat; Tnsi-Yts-7 Rs (33820)

Spud Date: 4/09/1938

P&amp;A Date: 11/17/2021

Surface Casing13.0" Csg. (16.0" Hole) @ 247'  
200 sx - 40 sx Circulated to SurfaceIntermediate Casing9.625" Csg. (12.0" Hole) @ 1594'  
400 sx - Circulated to Surface**PLUG AND ABANDON PROCEDURE  
ORDERED P&A'D BY STATELAND OFFICE**MIRU Pulling unit. Remove horsehead, install BOP & pull rods -  
tag bottom w/ tubing (~3600') and ready mud & cement crew.  
(Note: CIBP @ 3700' w/ 20' cement cap set in 1975.)**Load hole w/ 9.5# MLF and spot cement as follows:**

RIH and tagged existing @ 3660 feet.  
Spot 45 sx 3660 feet to 3390 feet;  
Perf 4 squeeze holes @ 1650 feet (top of salt) -  
attempt to squeeze - could not;  
Spot 30 sx 1700 feet to 1500 feet - TAG;  
Dug down at surface to expose casing head flange -  
corroded away - replaced flange.  
Perf squeeze holes @ 300 feet but remaining surface corrosion  
prevented pressure-up for squeeze.  
Pumped spacer 48 bbl MLF to fully load hole.

OCD approved spotting cement to Surface -  
65+ sx to fill from 350 feet.Install P&A Marker, remove all equipment and junk, cut anchors,  
level and clean location.

Notify NMOCD for final P&amp;A release inspection.

Production Casing7.0", 17.0# J-55 Csg. (8.75" Hole) @ 3730'  
250 sx - TOC @ 1000' by Calc.

Drawn by: Ben Stone, 12/06/2021



**District I**  
1625 N. French Dr., Hobbs, NM 88240  
Phone:(575) 393-6161 Fax:(575) 393-0720  
**District II**  
811 S. First St., Artesia, NM 88210  
Phone:(575) 748-1283 Fax:(575) 748-9720  
**District III**  
1000 Rio Brazos Rd., Aztec, NM 87410  
Phone:(505) 334-6178 Fax:(505) 334-6170  
**District IV**  
1220 S. St Francis Dr., Santa Fe, NM 87505  
Phone:(505) 476-3470 Fax:(505) 476-3462

State of New Mexico  
Energy, Minerals and Natural Resources  
Oil Conservation Division  
1220 S. St Francis Dr.  
Santa Fe, NM 87505

CONDITIONS  
  
Action 65358

CONDITIONS

Operator: CAMERON OIL & GAS INC P.O. Box 1089 Eunice, NM 88231	OGRID: 181109
	Action Number: 65358
	Action Type: [C-103] Sub. Plugging (C-103P)

CONDITIONS

Created By	Condition	Condition Date
kfortner	Need C103Q with pic of marker	2/2/2022