

Office
 District I – (575) 393-6161
 1625 N. French Dr., Hobbs, NM 88240
 District II – (575) 748-1283
 811 S. First St., Artesia, NM 88210
 District III – (505) 334-6178
 1000 Rio Brazos Rd., Aztec, NM 87410
 District IV – (505) 476-3460
 1220 S. St. Francis Dr., Santa Fe, NM
 87505

State of New Mexico
 Energy, Minerals and Natural Resources

Form C-103
 Revised July 18, 2013

OIL CONSERVATION DIVISION
 1220 South St. Francis Dr.
 Santa Fe, NM 87505

WELL API NO. 30-015-22686
5. Indicate Type of Lease STATE <input type="checkbox"/> FEE <input checked="" type="checkbox"/>
6. State Oil & Gas Lease No.
7. Lease Name or Unit Agreement Name
8. Well Number 1
9. OGRID Number 4323
10. Pool name or Wildcat Culebra Bluff, Atoka, South (gas)

SUNDRY NOTICES AND REPORTS ON WELLS (DO NOT USE THIS FORM FOR PROPOSALS TO DRILL OR TO DEEPEN OR PLUG BACK TO A DIFFERENT RESERVOIR. USE "APPLICATION FOR PERMIT" (FORM C-101) FOR SUCH PROPOSALS.)	
1. Type of Well: Oil Well <input type="checkbox"/> Gas Well <input type="checkbox"/> Other	
2. Name of Operator Chevron U.S.A INC.	
3. Address of Operator 6301 Deauville BLVD, Midland, TX 79706	
4. Well Location Unit Letter <u>C</u> : <u>560</u> feet from the <u>NORTH</u> line and <u>1980</u> feet from the <u>WEST</u> line Section <u>25</u> Township <u>23S</u> Range <u>28E</u> NMPM County <u>EDDY</u>	
11. Elevation (Show whether DR, RKB, RT, GR, etc.) 2,989' GL, 3,009' KB	

12. Check Appropriate Box to Indicate Nature of Notice, Report or Other Data

NOTICE OF INTENTION TO:	SUBSEQUENT REPORT OF:
PERFORM REMEDIAL WORK <input type="checkbox"/>	REMEDIAL WORK <input type="checkbox"/>
TEMPORARILY ABANDON <input type="checkbox"/>	ALTERING CASING <input type="checkbox"/>
PULL OR ALTER CASING <input type="checkbox"/>	COMMENCE DRILLING OPNS. <input type="checkbox"/>
DOWNHOLE COMMINGLE <input type="checkbox"/>	P AND A <input checked="" type="checkbox"/>
CLOSED-LOOP SYSTEM <input type="checkbox"/>	CASING/CEMENT JOB <input type="checkbox"/>
OTHER: <input type="checkbox"/>	OTHER: <input type="checkbox"/>

13. Describe proposed or completed operations. (Clearly state all pertinent details, and give pertinent dates, including estimated date of starting any proposed work). SEE RULE 19.15.7.14 NMAC. For Multiple Completions: Attach wellbore diagram of proposed completion or recompletion.

12/19/2020 Set CIBP at 11,480'.
 12/20/2020 Pump 170 sacks Class H cement from 11,480' to 9,668' tag depth
 12/21/2020 Pump 30 sacks Class H cement from 9,350' to 9,193' tag depth
 1/14/2022 Pump 40 sacks Class C cement from 6,374' to 6,166'
 1/14/2022 Pump 40 sacks Class C cement from 4,809' to 4,602'
 1/14/2022 Pump 40 sacks Class C cement from 3,748' to 3,541'
 1/17/2022 Perforate at 2500'. Spot & squeeze 202 sacks Class C cement from 2500' to 1956' tag depth.
 1/26/2022 Attempt to cut casing at 1800', no success. Spot 34 sacks Class C cement from 1950' to 1750'.
 1/26/2022 Attempt to cut casing at 1500', no success. Spot 17 sacks Class C cement from 1550' to 1450'.
 1/27/2022 Cut & pull 7-5/8" from 750'. Spot CIBP inside 10-3/4" casing at 750'.
 1/28/2022 Spot 50 sacks Class C cement from 750' to 662' tag depth
 1/28/2022 Spot 200 sacks Class C cement from 445' to surface

Spud Date:

Rig Release Date:

Approved for plugging of well bore only. Liability under bond is retained pending Location cleanup & receipt of C-103Q (Subsequent Report of Well Plugging) which may be found at OCD Web Page, OCD Permitting @ www.emnrd.state.nm.us

I hereby certify that the information above is true and complete to the best of my knowledge and belief.

SIGNATURE Hayes Thibodeaux TITLE Engineer DATE 2/2/2022

Type or print name Hayes Thibodeaux E-mail address: Hayes.thibodeaux@chevron.com PHONE: 281-726-9683

For State Use Only

APPROVED BY: [Signature] TITLE Staff Manager DATE 2/3/2022
 Conditions of Approval (if any):



EMC Ops Summary - External

Well Name WILLIAMS GAS COM 001	Field Name Culebra Bluff South	Lease WILLIAMS GAS COM	Area Delaware Basin		
Business Unit EMC	County/ Parish Eddy	Global Metrics Region EMC US East	Surface UWI 3001522686		
Basic Well Data					
Current RKB Elevation	Original RKB Elevation (ft) 3,009.00	Latitude (°) 32° 16' 55.344" N	Longitude (°) 104° 2' 33.54" W		
Phases					
Actual Start Date	Actual End Date	Phase 1	Phase 2	Time Log Hrs (hr)	Percent Problem Time (%)
9/28/2020 07:00	9/28/2020 14:00	PREP	FAC	7.00	
12/16/2020 06:00	12/16/2020 18:00	MOB	MOVEON		
12/17/2020 10:00	12/19/2020 16:30	ABAN	PLGMILL	24.50	12.24
12/19/2020 16:30	12/22/2020 17:00	ABAN	CMTPLUG	35.50	14.08
1/25/2022 06:30	1/25/2022 17:30	MOB	MOVEON	11.00	72.73
1/26/2022 06:30	1/27/2022 15:15	ABAN	CSGPULL	19.75	15.19
1/27/2022 15:15	1/28/2022 18:30	ABAN	CMTPLUG	15.25	
2/1/2022 07:00	2/1/2022 12:00	REST	FAC	5.00	
Rpt # 1 , 9/28/2020					
Operations Summary Review JSA's and prep location. Location prep complete.					
Rpt # 2 , 12/15/2020					
Operations Summary JSA SWC SIF. MIRU Crane, Flow Back Tank and Kill Pump. Bled of Production Casing. N/D B1 Flange and N/U 7 1/6" Frac Valve. Pressure Test Valve to 1000 PSI held for 15 min's. RDMO.					
Rpt # 3 , 12/17/2020					
Operations Summary Held Chevron on boarding and Eq Inspection with Chevron Safety Rep and WSR. Spot CTU and Pumping EQ. After BOP inspection found BOP Stack was out of date. Cudd has a Certified BOP Stack in route to Loc.Loaded 300 BBLS of brine in Frac tank. Secure Loc.					
Rpt # 4 , 12/18/2020					
Operations Summary Held Safety Meeting. MIRU 2 3/8 CTU and Pump Eq. M/U 2.875 Mud Motor, Check valve,Circ Sub, Hyd Disconnect with 4.25 Tri Cone Bit. Filled CT with 80 BBLS of Brine. Test BOP Stack. Secure Loc.					
Rpt # 5 , 12/19/2020					
Operations Summary Held Safety Meeting. Check Pressures. Pumped 25 BBLS of brine to fill Coil System. Open well RIH with 4.25 Bit Tagged 11,146' Drilled to 11,550. POOH R/U wireline RIH with Gauge ring and set a CIBP at 11,480'. Secure Loc.					
Rpt # 6 , 12/20/2020					
Operations Summary Held Safety Meeting. Check Pressures. R/U CTU. Pumped 25 BBLS of brine to fill Coil System. Test BOP. RIH with Cement Nozzle Tagged CIBP at 11,480'. Pressure Tested casing to 500 PSI. Placed 170 of Class H Cement from 11,480' to 9,681'. POOH to 9,600' CC 500 BBLS of Packer Fluid. POOH Secure Loc.					
Rpt # 7 , 12/21/2020					
Operations Summary Held Safety Meeting. Check Pressures. R/U CTU. Pumped 25 BBLS of brine to fill Coil System. RIH with Cement Nozzle Tagged TOC at 9668'. Pressure Tested casing to 1000 PSI. Pumped 145 BBLS of MLF from 9868' to 9350' and 9207' to 6324' Placed 30 of Class H Cement from 9,350' to 9,207'. POOH to Surface Flush Eq. Secure Loc.					
Rpt # 8 , 12/22/2020					
Operations Summary Held Safety Meeting. Check Pressures. R/U CTU. Pumped 25 BBLS of brine to fill Coil System. RIH with Cement Nozzle Tagged TOC at 9193'. POOH to Surface Flush Eq With N2. RDMO.					
Rpt # 9 , 1/12/2021					
Operations Summary Held Safety Meeting. MIRU Test Pump and Vac truck. Pressure Tested Pump and Lines 1000 PSI Held for 10 min's. Filled well with 1 BBL of water. Pressure Tested Production Casing to 550 PSI held for 1 hour and recorded on a chart. NMOCD Dan Schwartz waived witnessing Test. RDMO					
Rpt # 10 , 1/13/2022					
Operations Summary Road rig to yard clean out paraffin wax from previous well. Finish roading to Williams Gas Com 001					
Rpt # 11 , 1/14/2022					
Operations Summary Arrive on location Hold safety meeting, JSA, Tenet # 4. Check location good, Check well Production casing 0 PSI no gas, Intermediate Casing 200 PSI. high levels of CO and LEL, Surface casing 0 PSI no gas. Rig up coil and equipment, Install injection head on BOPE and Well. Test BOPE low 500 PSI for 5 minutes, high 1000 PS for 15 minutes test good. Test 7 5/8" casing 1000 PSI holding good. RIH with 1 1/2" coil to 6374'. Spot 142 bbl salt gel. Place 40 sack plug from 6374' T/ 6166', Pull up to 4809' place 40 sack plug from 4809' T/ 4602', pull up to 3748' T/ 3541'. All plugs were class C cement @ 14.8. POOH with 1 1/2" coil. Wash up equipment. Secure well EOT					
Rpt # 12 , 1/17/2022					
Operations Summary Arrive on location Hold safety meeting JSA,tenet # 7. Check location and well, Production casing 0 PSI no gas, Intermediate casing had 200 PSI 40 PPM CO and 34 LEL, Surface casing 0 PSI and no gas. Rig up coil. Install 2" TCP. RIH with 1 1/2" coil to 2500' Presure up on TCP and shoot perfs Establish injestion rate 2 BPM at 300 PSI. Continue to circulate as crew POOH with coil. Remove used TCP. Continue circulation pumping 78.5 bbl brine 2.5 bbl fresh water. Crew lunch, wait on more brine. Pump 202 sacks class C cement with 2.5 bbl fresh water and 84.5 bbl brine to displace top of cement to 1950' close in well with 300 PSI. WOC. RIH with 1 1/2" coil tag TOC at 1956' POOH with 1 1/2" coil. Rig down equipment. Secure well EOT					
Rpt # 13 , 1/25/2022					
Operations Summary Move equipment to location. Rig broke down had mechanic fix. Held jsa safety meeting. Spot equipment. Rig up service unit. Shut in and secure well.					
Rpt # 14 , 1/26/2022					
Operations Summary Held jsa safety meeting. Check pressure and blow down well. Rig up lubricator. Run wire line and perf at 1800 with 2 in tcp and tried to circulate no good. Talked with Hayes Thibodeaux (chev-eng) and talked with David Alvarado (NM core). Run wire line and perf at 1500 with 2 in tcp and try circulating no good. Run wire line and perf at 750 with 2 in tcp and try circulating no good. Run in wire line and perf at 750 with 2 in dp. Circulate well clean. Run in wire line and cut 7 5/8 casing at 750 with jet cutter then pull out of hole. Shut in and secure well held debrief meeting.					
Rpt # 15 , 1/27/2022					
Operations Summary Held jsa safety meeting. Check pressure. Nipple down well. Nipple up bop. Rig up floor and casing tools. Pull lay down 18 jts 7 5/8 casing. Rig down casing tools and change out tools. Talked with David Alvarado (NM core). Trip in 61 jts 2 7/8 depth 1950. Pump 8 bls MLF 1750-1550. Pump 34 sacks class C 1.32 yield at 14.8 lbs and displace 10 bls toc at 1750. Pull lay down 12 jts leaving 49 jts in hole depth 1550. Pump 30 bls MLF 1450-750. Pump 17 sacks class C 1.32 yield at 14.8 lbs and displace 8 bls toc 1450. Pull stand back 12 stands and lay down the rest. Pick up 10 3/4 scrapper and run 24 jts 2 7/8 depth 750. Pull stand back all tubing. Shut in and secure well held debrief meeting.					
Rpt # 16 , 1/28/2022					
Operations Summary Held jsa safety meeting. Check pressure on well and bubble test for 30 minutes. Rig up lubricator. Run wire line and set 10 3/4 cibp at 750 then pull out of hole. Rig down lubricator. Trip in 24 jts 2 7/8 depth 750. Pump and clean up well. Pump 50 sacks class C 1.32 yield at 14.8 lbs with 2% calcium and displace 3.5 bls. Pull stand back tubing. WOC. Bubble test well for 30 minutes. Pressure test well 1000 psi for 15 minutes. Trip in tubing tag 21 jts depth 662. Talked with Hayes Thibodeaux (chev-eng) and David Alvarado (MN core). Pump 19 bls MLF and displace 2.5 bls 662-450. Pull lay down 8 jts leaving 14 jts in hole depth 445. Pump circulate well with 200 sacks class C 1.32 yield at 14.8 lbs. Pull lay down tubing and top off well. Rig down tools and floor. Rig down service unit. Shut down and secure location.					



EMC Ops Summary - External

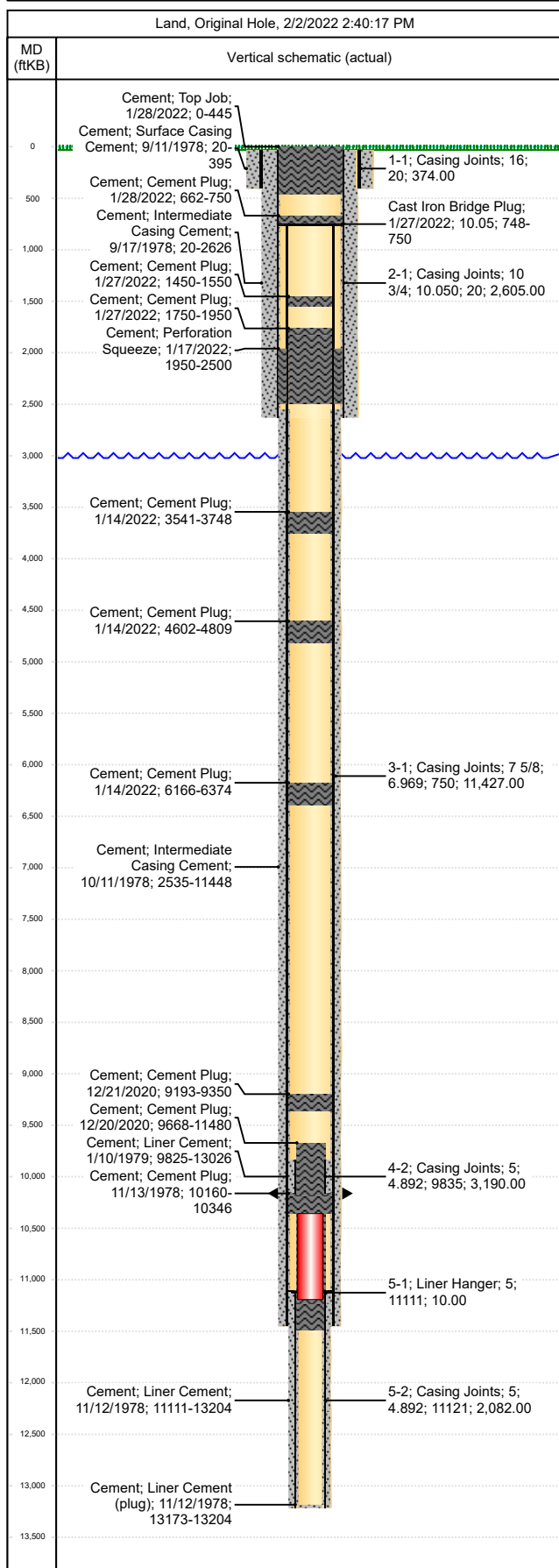
Well Name WILLIAMS GAS COM 001	Field Name Culebra Bluff South	Lease WILLIAMS GAS COM	Area Delaware Basin
Business Unit EMC	County/ Parish Eddy	Global Metrics Region EMC US East	Surface UWI 3001522686

Rpt # 17 , 2/1/2022
Operations Summary HSE meeting, hazard hunt, well gas/pressure checks, reviewed dig plan, performed location line sweep, unload equipment, removed recycable parts, unload equipment, excavate/cut anchors, backfilled diggings, excavate cellar, built bell hole, built access ramp, rigged oscillating saw, cut wellhead, removed saw from hole, toppled/removed wellhead from excavation, set suno-tube, mixed and poured concrete, welded marking pole with well ID, backfilled excavation, location is restored.



Wellbore Schematic

Well Name WILLIAMS GAS COM 001	Lease WILLIAMS GAS COM	Field Name Culebra Bluff South	Business Unit EMC
--	----------------------------------	--	-----------------------------



Job Details					
Job Category		Start Date		Rig/Unit End Date	
Abandon		12/17/2020		12/22/2020	
Abandon		1/13/2022		1/17/2022	
Abandon		1/25/2022		1/28/2022	
Casing Strings					
Csg Des	OD (in)	Wt/Len (lb/ft)	Grade	Top Thread	Set Depth (MD) (ftKB)
Surface	16				395
Intermediate 1	10 3/4	40.50	K-55		2626
Intermediate 2	7 5/8		S-95		11448
Liner	5	17.93	N-80		13026
Liner	5	17.93	N-80		13204
Perforations					
Date	Top (ftKB)	Btm (ftKB)	Shot Dens (shots/ft)	Entered Shot Total	Linked Zone
3/13/2015	11,550.0	11,990.0	2.0		ATOKA, Original Hole
3/7/1985	11,589.0	11,976.0	8.0		ATOKA, Original Hole
7/29/1982	11,890.0	11,904.0	4.0		ATOKA, Original Hole
1/23/1979	12,492.0	12,763.0	4.0		MORROW, Original Hole

District I
1625 N. French Dr., Hobbs, NM 88240
Phone:(575) 393-6161 Fax:(575) 393-0720
District II
811 S. First St., Artesia, NM 88210
Phone:(575) 748-1283 Fax:(575) 748-9720
District III
1000 Rio Brazos Rd., Aztec, NM 87410
Phone:(505) 334-6178 Fax:(505) 334-6170
District IV
1220 S. St Francis Dr., Santa Fe, NM 87505
Phone:(505) 476-3470 Fax:(505) 476-3462

State of New Mexico
Energy, Minerals and Natural Resources
Oil Conservation Division
1220 S. St Francis Dr.
Santa Fe, NM 87505

CONDITIONS

Action 77752

CONDITIONS

Operator: CHEVRON U S A INC 6301 Deauville Blvd Midland, TX 79706	OGRID: 4323
	Action Number: 77752
	Action Type: [C-103] Sub. Plugging (C-103P)

CONDITIONS

Created By	Condition	Condition Date
gcordero	None	2/3/2022