

Form 3160-5  
(June 2019)UNITED STATES  
DEPARTMENT OF THE INTERIOR  
BUREAU OF LAND MANAGEMENTFORM APPROVED  
OMB No. 1004-0137  
Expires: October 31, 2021**SUNDRY NOTICES AND REPORTS ON WELLS**  
**Do not use this form for proposals to drill or to re-enter an abandoned well. Use Form 3160-3 (APD) for such proposals.**

5. Lease Serial No.

6. If Indian, Allottee or Tribe Name

**SUBMIT IN TRIPLICATE - Other instructions on page 2**

1. Type of Well

☐ Oil Well ☐ Gas Well ☐ Other

2. Name of Operator

3a. Address

3b. Phone No. (include area code)

4. Location of Well (Footage, Sec., T., R., M., or Survey Description)

7. If Unit of CA/Agreement, Name and/or No.

8. Well Name and No.

9. API Well No.

10. Field and Pool or Exploratory Area

11. Country or Parish, State

## 12. CHECK THE APPROPRIATE BOX(ES) TO INDICATE NATURE OF NOTICE, REPORT OR OTHER DATA

TYPE OF SUBMISSION	TYPE OF ACTION				
<input type="checkbox"/> Notice of Intent	<input type="checkbox"/> Acidize	<input type="checkbox"/> Deepen	<input type="checkbox"/> Production (Start/Resume)	<input type="checkbox"/> Water Shut-Off	
	<input type="checkbox"/> Alter Casing	<input type="checkbox"/> Hydraulic Fracturing	<input type="checkbox"/> Reclamation	<input type="checkbox"/> Well Integrity	
<input type="checkbox"/> Subsequent Report	<input type="checkbox"/> Casing Repair	<input type="checkbox"/> New Construction	<input type="checkbox"/> Recomplete	<input type="checkbox"/> Other	
	<input type="checkbox"/> Change Plans	<input type="checkbox"/> Plug and Abandon	<input type="checkbox"/> Temporarily Abandon		
<input type="checkbox"/> Final Abandonment Notice	<input type="checkbox"/> Convert to Injection	<input type="checkbox"/> Plug Back	<input type="checkbox"/> Water Disposal		

13. Describe Proposed or Completed Operation: Clearly state all pertinent details, including estimated starting date of any proposed work and approximate duration thereof. If the proposal is to deepen directionally or recompleat horizontally, give subsurface locations and measured and true vertical depths of all pertinent markers and zones. Attach the Bond under which the work will be performed or provide the Bond No. on file with BLM/BIA. Required subsequent reports must be filed within 30 days following completion of the involved operations. If the operation results in a multiple completion or recompleat in a new interval, a Form 3160-4 must be filed once testing has been completed. Final Abandonment Notices must be filed only after all requirements, including reclamation, have been completed and the operator has detennined that the site is ready for final inspection.)

14. I hereby certify that the foregoing is true and correct. Name (Printed/Typed)

Title

Signature

Date

Accepted for record – NMOCD gc 2/3/2022

**THE SPACE FOR FEDERAL OR STATE OFFICE USE**

Approved by

Title

Date

Conditions of approval, if any, are attached. Approval of this notice does not warrant or certify that the applicant holds legal or equitable title to those rights in the subject lease which would entitle the applicant to conduct operations thereon.

Office

Title 18 U.S.C Section 1001 and Title 43 U.S.C Section 1212, make it a crime for any person knowingly and willfully to make to any department or agency of the United States any false, fictitious or fraudulent statements or representations as to any matter within its jurisdiction.

(Instructions on page 2)

## GENERAL INSTRUCTIONS

This form is designed for submitting proposals to perform certain well operations and reports of such operations when completed as indicated on Federal and Indian lands pursuant to applicable Federal law and regulations. Any necessary special instructions concerning the use of this form and the number of copies to be submitted, particularly with regard to local area or regional procedures and practices, are either shown below, will be issued by or may be obtained from the local Federal office.

## SPECIFIC INSTRUCTIONS

*Item 4* - Locations on Federal or Indian land should be described in accordance with Federal requirements. Consult the local Federal office for specific instructions.

*Item 13*: Proposals to abandon a well and subsequent reports of abandonment should include such special information as is required by the local Federal office. In addition, such proposals and reports should include reasons for the abandonment; data on any former or present productive zones or other zones with present significant fluid contents not sealed off by cement or otherwise; depths (top and bottom) and method of placement of cement plugs; mud or other material placed below, between and above plugs; amount, size, method of parting of any casing, liner or tubing pulled and the depth to the top of any tubing left in the hole; method of closing top of well and date well site conditioned for final inspection looking for approval of the abandonment. If the proposal will involve **hydraulic fracturing operations**, you must comply with 43 CFR 3162.3-3, including providing information about the protection of usable water. Operators should provide the best available information about all formations containing water and their depths. This information could include data and interpretation of resistivity logs run on nearby wells. Information may also be obtained from state or tribal regulatory agencies and from local BLM offices.

## NOTICES

The privacy Act of 1974 and the regulation in 43 CFR 2.48(d) provide that you be furnished the following information in connection with information required by this application.

AUTHORITY: 30 U.S.C. 181 et seq., 351 et seq., 25 U.S.C. 396; 43 CFR 3160.

PRINCIPAL PURPOSE: The information is used to: (1) Evaluate, when appropriate, approve applications, and report completion of subsequent well operations, on a Federal or Indian lease; and (2) document for administrative use, information for the management, disposal and use of National Resource lands and resources, such as: (a) evaluating the equipment and procedures to be used during a proposed subsequent well operation and reviewing the completed well operations for compliance with the approved plan; (b) requesting and granting approval to perform those actions covered by 43 CFR 3162.3-2, 3162.3-3, and 3162.3-4; (c) reporting the beginning or resumption of production, as required by 43 CFR 3162.4-1(c) and (d) analyzing future applications to drill or modify operations in light of data obtained and methods used.

ROUTINE USES: Information from the record and/or the record will be transferred to appropriate Federal, State, local or foreign agencies, when relevant to civil, criminal or regulatory investigations or prosecutions in connection with congressional inquiries or to consumer reporting agencies to facilitate collection of debts owed the Government.

EFFECT OF NOT PROVIDING THE INFORMATION: Filing of this notice and report and disclosure of the information is mandatory for those subsequent well operations specified in 43 CFR 3162.3-2, 3162.3-3, 3162.3-4.

The Paperwork Reduction Act of 1995 requires us to inform you that:

The BLM collects this information to evaluate proposed and/or completed subsequent well operations on Federal or Indian oil and gas leases.

Response to this request is mandatory.

The BLM would like you to know that you do not have to respond to this or any other Federal agency-sponsored information collection unless it displays a currently valid OMB control number.

**BURDEN HOURS STATEMENT:** Public reporting burden for this form is estimated to average 8 hours per response, including the time for reviewing instructions, gathering and maintaining data, and completing and reviewing the form. Direct comments regarding the burden estimate or any other aspect of this form to U.S. Department of the Interior, Bureau of Land Management (1004-0137), Bureau Information Collection Clearance Officer (WO-630), 1849 C St., N.W., Mail Stop 401 LS, Washington, D.C. 20240

## **Additional Information**

### **Location of Well**

0. SHL: SENW / 1980 FNL / 1570 FWL / TWSP: 18S / RANGE: 26E / SECTION: 6 / LAT: 0.0 / LONG: 0.0 ( TVD: 0 feet, MD: 0 feet )

**Fasken Oil and Ranch, LTD.**

Daily Operations Report

(All Event Days)

1/1/2015 thru 1/27/2022

Page 1

Printed 1/28/2022

**Yates 6 Federal # 3**

Eddy Co., NM

Event Date: 10/18/2017

Well ID: YA7000-03

SWAB WELL

**Oct 18, 2017 Wednesday Day 1**

Well flowing. Produced 0 bc + 0 bw and 41 mcf in 24 hrs. RUSU, opened well to tank and began swabbing. Recovered 2 bf in 2 swab runs. IFL- scattered, EFL- 6500' FS and scattered. Had a moderate blow after 2nd run. Left well online flowing 95 mcfpd. FTP- 50 psi.

Daily Cost:

Cum. Cost:

**Oct 19, 2017 Thursday Day 2**

Well flowing at a rate 79 mcfpd. RDSU and released rig.

Daily Cost:

Cum. Cost:

**Yates 6 Federal # 3**

Eddy Co., NM

Event Date: 2/20/2021

Well ID: YA7000-03

AFE # 4058

Plug and Abandon.

**Feb 20, 2021 Saturday Day 1**

Contacted BLM (Joe Salcido) and notify BLM of intent to start P&A operation and received approval to proceed w/ plugging operations. SITP-600 psi, SICP-600 psi, SISP-600 psi. RUPU (BCM plugging unit Rig No. 5). Rig crew dug out cellar around well head and located surface casing valve. BCM set cement pump and plugging equipment. Contractor delivered and pipe racks and catwalk. Received and unloaded 10 jts 2-3/8" EUE 8rd L80 from Yates 6 Federal No. 1. Bled down pressure to gas buster. RU BCM pump and pumped 20 bfw down tubing and 40 bfw down tubing/casing annulus for well control. ND flow tree and NU 7-1/16" 5K manual BOP. Released packer and POW w/ 120 jts 2-3/8" EUE 8rd N80 tubing. SWI and SDON. (HM)

Daily Cost:

AFE Cum. Cost:

Jm. Cost:

AFE Amount:

**Feb 21, 2021 Sunday Day 2**

SITP-400 psi, SICP-400 psi, SISP-600 psi. Bled down pressure to gas buster. RU BCM pump and pumped 20 bfw down tubing and 20 bfw down tubing/casing annulus for well control. Finished POW w/ remaining POW w/ 164 jts 2-3/8" EUE 8rd N80 tubing and LD Baker Model "L" sliding sleeve, 2-3/8" x 6' tubing sub and 4-1/2" x 2-3/8" Arrowset I 10k packer w/ TOSSD. Contacted BLM (Joe Salcido) and received approval to proceed w/ plugging operations. RU Hydrostatic TT and RIW w/ 4-1/2" x 2-3/8" hydraulic set CIBP w/ set ball in place, 2 jts 2-3/8" EUE 8rd N80 tubing while hydro testing tubing to 6000 psi above slips. Found pin hole on 3rd jt approximately 8308' FS (tubing tally). Continued RIW w/ additional 261 jts 2-3/8" EUE 8rd N80 tubing while hydro testing tubing to 6000 psi above slips w/ no additional failures found and RD testers. RU BCM plugging equipment, pumped 33 bbls mud laden brine down tubing and hydraulically set CIBP w/ 1000 psi at 8400' FS. Pulled 20K tension and set 20K compression several times to verify CIBP properly set. Released RH running nipple from top of CIBP. Mixed and pumped 30 sx Class "H" cement (6.25 bbls slurry) (s.w. 14.8 ppg, yield 1.17 ft3/sx) @ 3.0 bpm w/ 200

**Fasken Oil and Ranch, LTD.****Daily Operations Report**

(All Event Days)

1/1/2015 thru 1/27/2022

Page 2

Printed 1/28/2022

psi followed by 1 bfw spacer and 30 bbls mud laden bw. Cement plug was spotted at 8400' FS and displaced to approximately 7986' FS. Casing was blowing throughout job and stopped after pump SD. POW w/ 50 jts 2-3/8" EUE 8rd N80 tubing and left EOT swinging at 6719'. SWI and SDON. Contractor hauled 140 bbw and 50 bfw to location. (HM)

AFE Cum. Cost:

Daily Cost:

n. Cost:

AFE Amount:

**Feb 22, 2021 Monday Day 3**

SITP-0 psi, SICP-0 psi, SISP-0 psi. RIW w/ tubing and tagged TOC 7970' FS. Notified BLM Bob Hoskinson of tag depth and BLM instructed to proceed w/ plugging operations. Displaced well with 120 bbls mud laden brine water, returns consisted of dark water. POW and LD 80 jts 2-3/8" EUE 8rd N80 tubing and left EOT swinging 5438' FS. Mixed and pumped 25 sx Class "C" cement (5.87 bbls slurry) (s.w. 14.8 ppg, yield 1.32 ft<sup>3</sup>/sx) @ 2.5 bpm w/ 800 psi followed by 1 bfw spacer and 18 bbls mud laden bw and balanced cement plug at 5438' FS and displaced to approximately 5060' FS. Surface casing stayed static and casing had circulation throughout job and stopped after pump SD, returns consisted of brown/clear water. BLM Bob Hoskinson witnessed pumping operations. POW w/ 50 jts 2-3/8" EUE 8rd N80 tubing. SWI and WOC 4 hrs. RIW w/ tubing and tagged TOC 4978' FS. BLM Bob Hoskinson witnessed tag depth and instructed to proceed w/ plugging operations. POW w/ 157 jts 2-3/8" EUE 8rd N80 tubing and LD running nipple. RIW w/ 4-1/2" AD-1 packer, 125 jts 2-3/8" EUE 8rd N80 tubing and left packer swinging 3868' FS. RUWL and RIW w/ perf gun and perforated 4-1/2" 11.6# casing w/ 4 squeeze holes 4219' FS. Loaded well w/ 5 bbls mud laden brine water. Set 4-1/2" AD-1 packer 3868' FS. Established injection rate w/ 2.5 BPM @ 200 psi w/ 5 bbls mud laden brine water. Surface casing had no circulation and stayed static while establishing injection rate. Mixed and pumped 50 sx Class "C" cement (11.75 bbls slurry) (s.w. 14.8 ppg, yield 1.32 ft<sup>3</sup>/sx) @ 2.5 BPM @ 200 psi followed by 1 bfw spacer and 16 bbls mud laden bw. SD pump and pressure stayed at 800 psi and SI tubing. Cement plug was displaced to approximately 4069' FS w/ squeeze holes 4219' FS. Surface casing had no circulation and stayed static throughout job. SWI and SDON. Contractor hauled 80 bbw to location and hauled 140 bf to public SWD. (HM)

AFE Cum. Cost:

Daily Cost:

im. Cost:

AFE Amount:

**Feb 23, 2021 Tuesday Day 4**

SITP-0 psi, SICP-0 psi, SISP-0 psi. Released packer and RIW w/ tubing and tagged TOC 4060' FS. POW and LD 42 jts 2-3/8" EUE 8rd N80 tubing jts and left packer swinging 1934' FS. RUWL and RIW w/ perf gun and perforated 4-1/2" 11.6# casing w/ 4 squeeze holes 2262' FS. BLM Bob Hoskinson witnessed tag and perf operation and instructed to proceed w/ plugging operation. Loaded well w/ 10 bbls mud laden brine water. Set 4-1/2" AD-1 packer 1934' FS. Established injection rate w/ 1/4 BPM @ 2000 psi w/ 2 bbls mud laden brine water. Decision was made to spot 25 sx Class "C" cement at 2312' FS. POW w/ 42 jts 2-3/8" EUE 8rd N80 tubing and LD 4-1/2" AD-1 packer. RIW w/ 73 jts 2-3/8" EUE 8rd N80 tubing and left EOT swinging 2312' FS. Mixed and pumped 25 sx Class "C" cement (5.87 bbls slurry) (s.w. 14.8 ppg, yield 1.32 ft<sup>3</sup>/sx) @ 2 bpm w/ 200 psi followed by 1 bfw spacer and 6 bbls mud laden bw and balanced cement plug at 2312' FS and displaced to approximately 1934' FS. Surface casing stayed static and casing had circulation throughout job and stopped after pump SD, returns consisted of brown/clear water. BLM Bob Hoskinson witnessed pumping operations. POW w/ 50 jts 2-3/8" EUE 8rd N80 tubing. SWI and WOC 4 hrs. RIW w/ tubing and tagged TOC 1930' FS. Notified BLM Bob Hoskinson of tag depth and BLM instructed to proceed w/ plugging operations. POW w/

**Fasken Oil and Ranch, LTD.****Daily Operations Report**

(All Event Days)

Page 3

1/1/2015 thru 1/27/2022

Printed 1/28/2022

61 jts 2-3/8" EUE 8rd N80 tubing. RIW w/ 4-1/2" AD-1 packer, 32 jts jts 2-3/8" EUE 8rd N80 tubing and left packer swinging 1014' FS. RUWL and RIW w/ perf gun and perforated 4-1/2" 11.6# casing w/ 4 squeeze holes 1327' FS. Loaded well w/ 4 bbls mud laden brine water. Set 4-1/2" AD-1 packer 1014' FS. Established injection rate at 2.0 BPM @ 100 psi w/ 3 bbls mud laden brine water. Surface casing had no circulation and stayed static while establishing injection rate. Mixed and pumped 35 sx Class "C" cement (8.22 bbls slurry) (s.w. 14.8 ppg, yield 1.32 ft3/sx) @ 2.0 BPM @ 200 psi followed by 1 bfw spacer and 6 bbls mud laden bw. SD pump w/ ISIP 800 psi. Cement plug was displaced to approximately 1213' FS w/ squeeze holes 1327' FS. Surface casing had no circulation and stayed static throughout job. SWI and SDON. (HM)

AFE Cum. Cost:

Daily Cost:

l. Cost:

AFE Amount:

**Feb 24, 2021 Wednesday Day 5**

SITP-0 psi, SICP-0 psi, SISP-0 psi. Released packer and RIW w/ tubing and tagged TOC @1205' FS. Notified BLM Bob Hoskinson of tag depth and BLM instructed to proceed w/ plugging operations. POW and LD 35 jts 2-3/8" EUE 8rd N80 tubing and left packer swinging @ 95' FS. RUWL and RIW w/ perf gun and perforated 4-1/2" 11.6# casing w/ 4 squeeze holes 450' FS. Loaded well w/ 2 bbls mud laden brine water. Set 4-1/2" AD-1 packer 95' FS, established injection rate at 2 BPM @ 0 psi w/ 5 bbls of mud laden brine water and surface casing had circulation while establishing injection rate. Mixed and pumped 35 sx Class "C" cement (8.22 bbls slurry) (s.w. 14.8 ppg, yield 1.32 ft3/sx) @ 2 BPM w/ 0 psi followed by 1 bfw spacer and 3 bbls mud laden bw. Cement plug was displaced to approximately 346' FS w/ squeeze holes 450' FS. Surface casing had circulation throughout job and stopped after pump SD, returns consisted of dark water. SWI and WOC 4 hrs. Bob Hoskinson witnessed pumping operations. SITP-0 psi. RIW w/ tubing and tagged TOC 360' FS. BLM Bob Hoskinson witnessed tag and instructed to proceed w/ plugging operations. POW and LD 12 jts 2-3/8" EUE 8rd N80 tubing and LD 4-1/2 AD-1 packer. RUWL and RIW to perforate 4-1/2" 11.6# casing w/ 4 squeeze holes @100' FS. BLM Bob Hoskinson witnessed tag and perf operation and instructed to proceed w/ plugging operation. POW w/ WL and LD tools. ND manual BOP and NUWH. Pumped 1 bbls mud laden brine water pumping down 4-1/2" casing and established circulation up 9-5/8" casing. Mixed and pumped 35 sx Class "C" cement (8.22 bbls slurry) (s.w. 14.8 ppg, yield 1.32 ft3/sx) @1.5 bpm and circulated good cement to surface and SWI. Bob Hoskinson witnessed pumping operations. RD cement pump, RDPU and released all rental equipment. Contractor hauled 80 bf to public SWD. Well plugged, waiting on WH cut off. (HM)

AFE Cum. Cost:

Daily Cost:

Cum. Cost:

AFE Amount:

**Feb 25, 2021 Thursday Day 6**

Well plugged, waiting on WH cut off. (HM)

AFE Cum. Cost:

Daily Cost:

m. Cost:

AFE Amount:

**Feb 26, 2021 Friday Day 7**

SITP-0 psi, SICP-0 psi, SISP-0 psi. Contractor cut off well head and welded plate onto casing w/ marker joint w/ required information. Installed 1" 2000 psi valve on top of plate. Filled bottle w/ grease and placed over valve. Left valve closed and removed handle. Backhoe backfilled hole and covered casing. Removed mast anchors and cleaned up location. WELL PLUGGED AND ABANDONED. FINAL REPORT. (HM)



## Yates 6 Fed No. 3

BLM Appvd 5-6-20(chgs in red)

GL: 3423'; KB: 3440'

Tops

Operator: **Fasken Oil and Ranch, Ltd.**  
 Location: 1980' FNL & 1570' FWL  
 Sec 6 T18S, R26E  
 Eddy Co, NM  
 Compl.: 8/28/2000  
 API #: 30-015-31230  
 TD: 8,700'  
 PBTD: 8,620' (CIBP 9-1-2000), Float collar 8652.80'  
 Casing: **9-5/8" 36# J-55 @ 1,277' KB**  
 100sx "H" w/10%A10B, 1% CaCl<sub>2</sub>, 10#/sx gils+  
 200sx "C" w/2% CaCl<sub>2</sub>, 1/4#/sx celloflk+ *Glorieta 2382'*  
 500sx "C" w/4% gel, 2% CaCl<sub>2</sub> (13.5ppg, 1.74 cuft/sk)  
 TOC surface, circ 229 sx.  
**4-1/2" 11.6# N-80 @ 8,699.14' KB**  
 500sx BJLite "H" (12.4ppg, 2.0cuft/sk)+  
 550sx Supe "C" Modified (CSE) *Abo 4169'*  
 w/1% salt, 1.1% FL-25 (14.2ppg, 1.35 cuft/Sk)  
 TOC @ 5,175' - Temp Survey

*San Andres 870'**Wolfcamp 5388'*

## BLM Appvd 5-6-20 (chgs in red)

19sx"C"	0-100' verify at surf.	Plg 6 surface
35sx"C"	346'-450', Tag	Plg 5, Perf & Sqz, TAG
35sx"C"	1213'-1327', Tag	Plg 4, Perf & Sqz, TAG
45sx"C"	2137'-2262', Tag	Plg #3A, Perf & Sqz, TAG
50sx"C"	4069'-4219', Tag	Plg 3, Perf & Sqz, TAG
25sx"C"	5283'-5438', Tag	Plg 2, Perf & Sqz, TAG
30sx "H"	7986'-8400', Tag	Plg 1, Tag
CIBP:	8,400'	

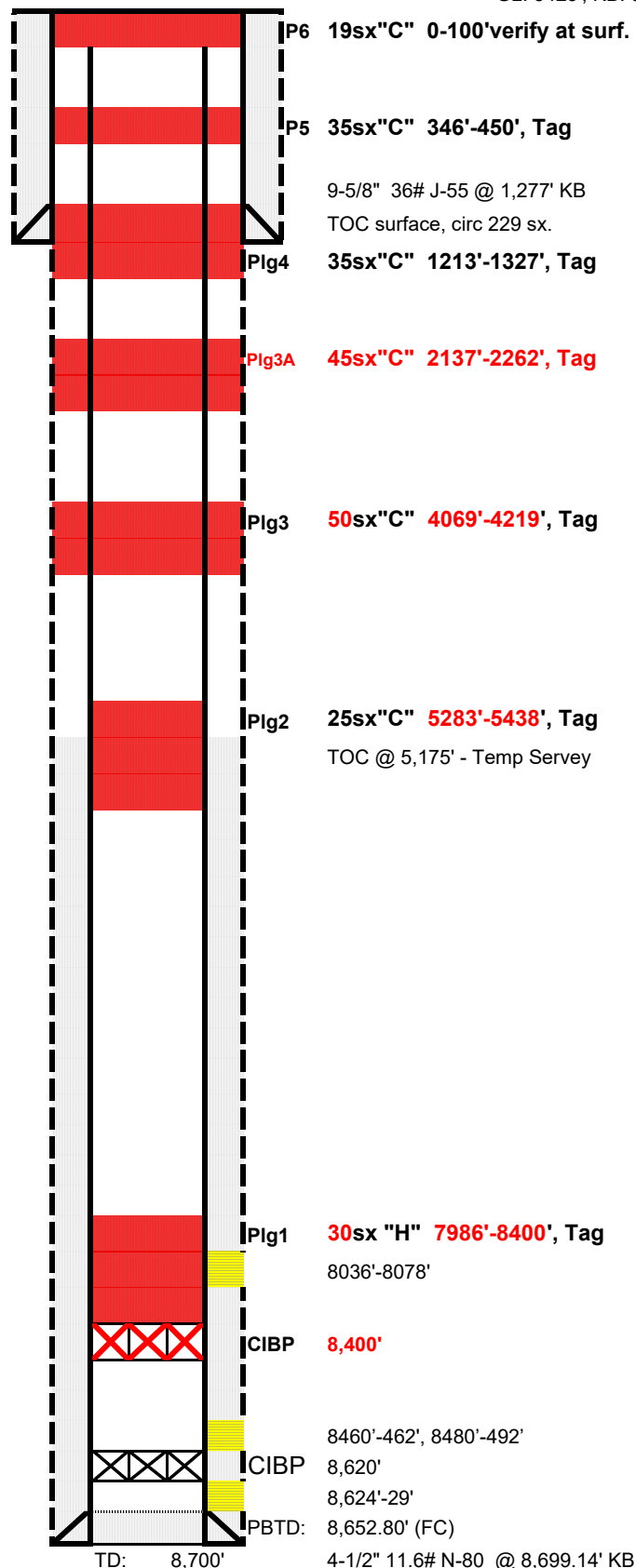
*Strawn 7806'*

Perfs:

Strawn:	8036'-8078' (8h, 10-14-00)	<i>Atoka 8112'</i>
Morrow:	8460'-462' (8h, 9-22-00)	
	8480'-492' (48h, 9-20-00)	<i>Morrow SS 8445'</i>
CIBP	8,620' 9/19/00	
	8,624'-29' (10h, 9-13-00)	<i>Barnett Sh 8528'</i>
		<i>Chester 8622'</i>

Hole sizes: 12-1/4" 1,285'; 8-3/4" 8,700'

Status:



cwb

6-23-10

Yates 6 Fed No. 3 WB diag.xlsx

**District I**  
1625 N. French Dr., Hobbs, NM 88240  
Phone:(575) 393-6161 Fax:(575) 393-0720  
**District II**  
811 S. First St., Artesia, NM 88210  
Phone:(575) 748-1283 Fax:(575) 748-9720  
**District III**  
1000 Rio Brazos Rd., Aztec, NM 87410  
Phone:(505) 334-6178 Fax:(505) 334-6170  
**District IV**  
1220 S. St Francis Dr., Santa Fe, NM 87505  
Phone:(505) 476-3470 Fax:(505) 476-3462

State of New Mexico  
Energy, Minerals and Natural Resources  
Oil Conservation Division  
1220 S. St Francis Dr.  
Santa Fe, NM 87505

CONDITIONS  
  
Action 76899

CONDITIONS

Operator: FASKEN OIL & RANCH LTD 6101 Holiday Hill Rd Midland, TX 79707	OGRID: 151416
	Action Number: 76899
	Action Type: [C-103] Sub. Plugging (C-103P)

CONDITIONS

Created By	Condition	Condition Date
gcordero	None	2/3/2022