

Office
District I – (575) 393-6161
1625 N. French Dr., Hobbs, NM 88240
District II – (575) 748-1283
811 S. First St., Artesia, NM 88210
District III – (505) 334-6178
1000 Rio Brazos Rd., Aztec, NM 87410
District IV – (505) 476-3460
1220 S. St. Francis Dr., Santa Fe, NM
87505

State of New Mexico
Energy, Minerals and Natural Resources

OIL CONSERVATION DIVISION
1220 South St. Francis Dr.
Santa Fe, NM 87505

Form C-103
Revised July 18, 2013

SUNDRY NOTICES AND REPORTS ON WELLS (DO NOT USE THIS FORM FOR PROPOSALS TO DRILL OR TO DEEPEN OR PLUG BACK TO A DIFFERENT RESERVOIR. USE "APPLICATION FOR PERMIT" (FORM C-101) FOR SUCH PROPOSALS.)		WELL API NO. 30-025-49396, 30-025-49395 & 30-025-49394
1. Type of Well: Oil Well <input checked="" type="checkbox"/> Gas Well <input type="checkbox"/> Other <input type="checkbox"/>		5. Indicate Type of Lease STATE <input checked="" type="checkbox"/> FEE <input type="checkbox"/>
2. Name of Operator Franklin Mountain Energy, LLC		6. State Oil & Gas Lease No. VB 2121, NM-101608 & Fee
3. Address of Operator 44 Cook Street, Suite 1000, Denver CO 80206		7. Lease Name or Unit Agreement Name Multiple
4. Well Location Multiple Unit Letter _____ : _____ feet from the _____ line and _____ feet from the _____ line Section _____ Township _____ Range _____ NMPM _____ County _____		8. Well Number Multiple
11. Elevation (Show whether DR, RKB, RT, GR, etc.)		9. OGRID Number 373910
10. Pool name or Wildcat Multiple		

12. Check Appropriate Box to Indicate Nature of Notice, Report or Other Data

NOTICE OF INTENTION TO:	SUBSEQUENT REPORT OF:
PERFORM REMEDIAL WORK <input type="checkbox"/>	REMEDIAL WORK <input type="checkbox"/>
TEMPORARILY ABANDON <input type="checkbox"/>	ALTERING CASING <input type="checkbox"/>
PULL OR ALTER CASING <input type="checkbox"/>	COMMENCE DRILLING OPNS. <input type="checkbox"/>
DOWNHOLE COMMINGLE <input type="checkbox"/>	P AND A <input type="checkbox"/>
CLOSED-LOOP SYSTEM <input type="checkbox"/>	CASING/CEMENT JOB <input type="checkbox"/>
OTHER: <input checked="" type="checkbox"/>	OTHER: <input type="checkbox"/>

13. Describe proposed or completed operations. (Clearly state all pertinent details, and give pertinent dates, including estimated date of starting any proposed work). SEE RULE 19.15.7.14 NMAC. For Multiple Completions: Attach wellbore diagram of proposed completion or recompletion.

Franklin Mountain Energy (FME) requests approval to amend approved Administrative Order PLC-729. Due to bore integrity and mechanical issues, FME received BLM and OCD approval to P&A, skid and re-drill 3 wells previously included in approved C-107B, Order PLC-729.

Previously approved and currently plugged wells:

County Fair Fed Com #602Y 30-025-47492
County Fair Fed Com #701Y 30-025-47493
Blue Ribbon Fed Com #702Y 30-025-47662

To be amended skid & re-drilled wells:

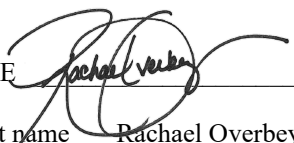
County Fair Fed Com #602H 30-025-49395
County Fair Fed Com #701H 30-025-49396
Blue Ribbon Fed Com #702H 30-025-49394

The new, replacement well bores were drilled from SHL's shifted 35' to the N and the BHL's were shifted minimally, only enough to avoid collision with the original bores. No new spacing will be required and ownership remains the same.


Spud Date:

Rig Release Date:

I hereby certify that the information above is true and complete to the best of my knowledge and belief.

SIGNATURE  TITLE Dir. Ops Planning & Regulatory DATE 2/2/2022
Type or print name Rachael Overbey E-mail address: roverbey@fmellc.com PHONE: 303-570-4057

For State Use Only

APPROVED BY:  TITLE Petroleum Engineer DATE 02/23/2022
Conditions of Approval (if any):

District I
1625 N. French Dr., Hobbs, NM 88240
Phone: (575) 393-6161 Fax: (575) 393-0720
District II
811 S. First St., Artesia, NM 88210
Phone: (575) 748-1283 Fax: (575) 748-9720
District III
1000 Rio Brazos Road, Aztec, NM 87410
Phone: (505) 334-6178 Fax: (505) 334-6170
District IV
1220 S. St. Francis Dr., Santa Fe, NM 87505
Phone: (505) 476-3460 Fax: (505) 476-3462

State of New Mexico
Energy, Minerals & Natural Resources Department
OIL CONSERVATION DIVISION
1220 South St. Francis Dr.
Santa Fe, NM 87505

Form C-102
Revised August 1, 2011
Submit one copy to appropriate
District Office

☐ AMENDED REPORT

WELL LOCATION AND ACREAGE DEDICATION PLAT

¹ API Number 30-025-49394	² Pool Code 98187	³ Pool Name WC-025 G-09 S253502D; UPR WOLFCAMP
⁴ Property Code 329324	⁵ Property Name BLUE RIBBON FED COM	⁶ Well Number 702H
⁷ OGRID No. 373910	⁸ Operator Name FRANKLIN MOUNTAIN ENERGY LLC	⁹ Elevation 3246.2'

¹⁰ Surface Location

UL or lot no. LOT 3	Section 2	Township 25S	Range 35E	Lot Idn	Feet from the 215	North/South line NORTH	Feet from the 1355	East/West line WEST	County LEA
------------------------	--------------	-----------------	--------------	---------	----------------------	---------------------------	-----------------------	------------------------	---------------

¹¹ Bottom Hole Location If Different From Surface

UL or lot no. N	Section 11	Township 25S	Range 35E	Lot Idn	Feet from the 150	North/South line SOUTH	Feet from the 1850	East/West line WEST	County LEA
¹² Dedicated Acres 320.87	¹³ Joint or Infill	¹⁴ Consolidation Code	¹⁵ Order No.						

No allowable will be assigned to this completion until all interests have been consolidated or a non-standard unit has been approved by the division.

¹⁶

SCALE

DRAWN BY: D.P. 08-10-21
REV: 1 09-09-21 D.J.S.
(NAME & BHL CHANGE)

● = SURFACE HOLE LOCATION
○ = BOTTOM HOLE LOCATION
▲ = SECTION CORNER LOCATED

LINE	DIRECTION	LENGTH
L1	S89°43'30"W	2640.17'

NOTE:

- Distances referenced on plat to section lines are perpendicular.
- Basis of Bearing is a Transverse Mercator Projection with a Central Meridian of W103°53'00" (NAD 83)

NAD 83 (SURFACE HOLE LOCATION)	
LATITUDE = 32°09'58.08" (32.166132°)	LONGITUDE = 103°20'32.89" (103.342468°)
NAD 27 (SURFACE HOLE LOCATION)	
LATITUDE = 32°09'57.62" (32.166006°)	LONGITUDE = 103°20'31.21" (103.342003°)
STATE PLANE NAD 83 (N.M. EAST)	
N: 425585.36' E: 847945.33'	
STATE PLANE NAD 27 (N.M. EAST)	
N: 425526.62' E: 806759.01'	

NAD 83 (BOTTOM HOLE LOCATION)	
LATITUDE = 32°08'16.91" (32.138032°)	LONGITUDE = 103°20'27.19" (103.340887°)
NAD 27 (BOTTOM HOLE LOCATION)	
LATITUDE = 32°08'16.46" (32.137905°)	LONGITUDE = 103°20'25.52" (103.340422°)
STATE PLANE NAD 83 (N.M. EAST)	
N: 415367.00' E: 848529.07'	
STATE PLANE NAD 27 (N.M. EAST)	
N: 415308.54' E: 807342.32'	

T24S
T25S

2
11
15

SHL

BHL

LEASE BOUNDARY

1355'

1850'

150'

S89°44'12"W 2639.95' (Meas.)

S89°31'12"W 2644.79' (Meas.)

S89°47'55"W 2651.62' (Meas.)

S89°39'29"W - 5294.79' (Meas.)

N00°16'53"W 2678.19' (Meas.)

N00°13'41"W 2636.93' (Meas.)

N00°10'34"W 2641.22' (Meas.)

N00°00'34"W 2635.58' (Meas.)

N00°27'28"W 2670.45' (Meas.)

N00°24'12"W 2638.11' (Meas.)

N00°15'11"W - 5276.62' (Meas.)

S03°01'48"E 10236.52'

¹⁷ OPERATOR
CERTIFICATION

I hereby certify that the information contained herein is true and complete to the best of my knowledge and belief, and that this organization either owns a working interest or unleased mineral interest in the land including the proposed bottom hole location or has a right to drill this well at this location pursuant to a contract with an owner of such a mineral or working interest, or to a voluntary pooling agreement or a compulsory pooling order heretofore entered by the division.

Signature

9/9/2021
Date

Shelly Albrecht
Printed Name

salbrecht@fmlle.com
E-mail Address

¹⁸ SURVEYOR
CERTIFICATION

I hereby certify that the well location shown on this plat was plotted from field notes of actual surveys made by me or under my supervision, and that the same is true and correct to the best of my belief.

June 11, 2021
Date of Survey

Signature and Seal of Professional Surveyor:

Certificate Number:

District I
1625 N. French Dr., Hobbs, NM 88240
Phone: (575) 393-6161 Fax: (575) 393-0720
District II
811 S. First St., Artesia, NM 88210
Phone: (575) 748-1283 Fax: (575) 748-9720
District III
1000 Rio Brazos Road, Aztec, NM 87410
Phone: (505) 334-6178 Fax: (505) 334-6170
District IV
1220 S. St. Francis Dr., Santa Fe, NM 87505
Phone: (505) 476-3460 Fax: (505) 476-3462

State of New Mexico
Energy, Minerals & Natural Resources Department
OIL CONSERVATION DIVISION
1220 South St. Francis Dr.
Santa Fe, NM 87505

Form C-102
Revised August 1, 2011
Submit one copy to appropriate
District Office

☐ AMENDED REPORT

WELL LOCATION AND ACREAGE DEDICATION PLAT

¹ API Number 30-025-49395	² Pool Code 98185	³ Pool Name WC-025 G-09 S253502B; LWR BONE SPRING
⁴ Property Code 328929	⁵ Property Name COUNTY FAIR FED COM	⁶ Well Number 602H
⁷ OGRID No. 373910	⁸ Operator Name FRANKLIN MOUNTAIN ENERGY LLC	⁹ Elevation 3246.2'

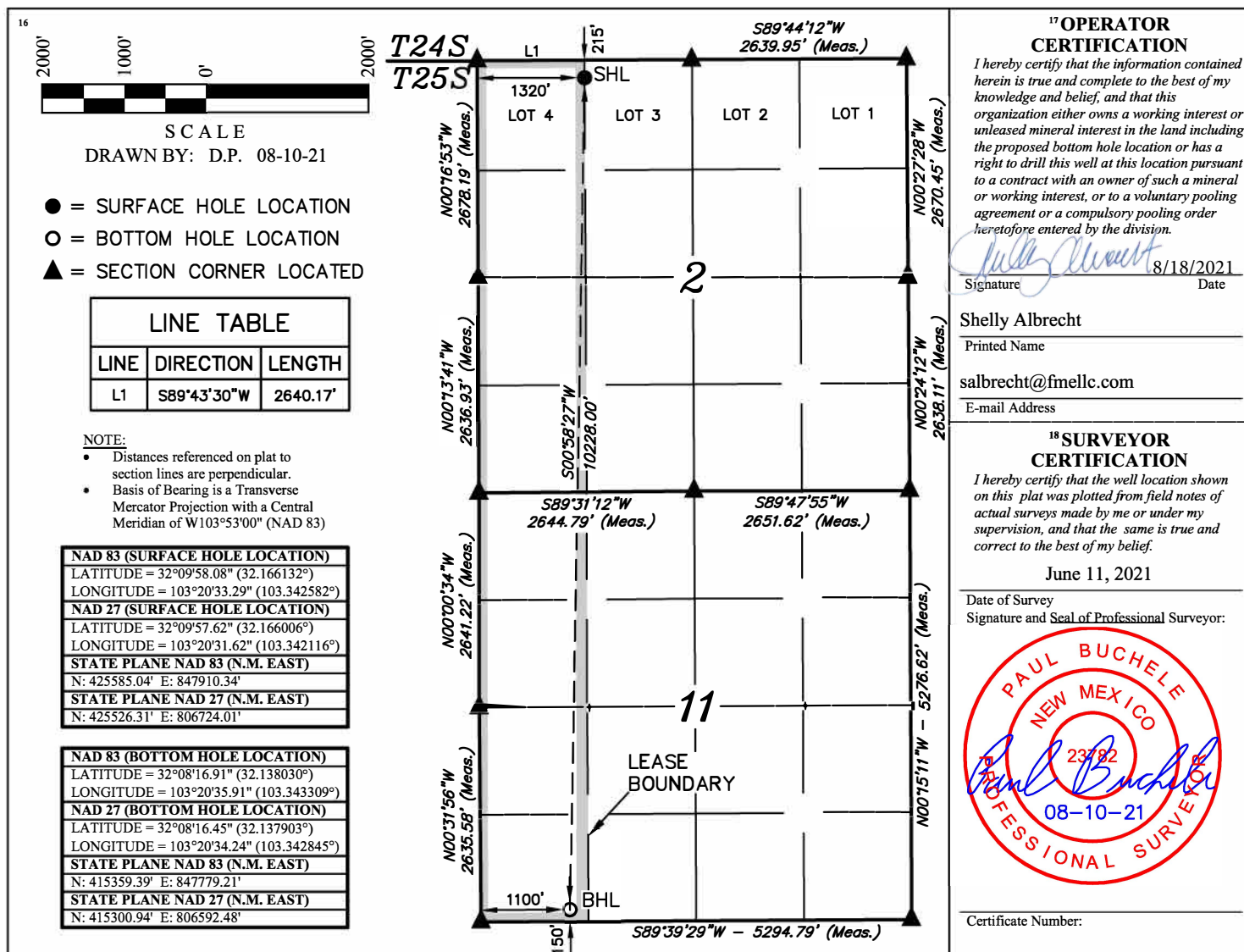
¹⁰ Surface Location

UL or lot no.	Section	Township	Range	Lot Idn	Feet from the	North/South line	Feet from the	East/West line	County
LOT 4	2	25S	35E		215	NORTH	1320	WEST	LEA

¹¹ Bottom Hole Location If Different From Surface

UL or lot no.	Section	Township	Range	Lot Idn	Feet from the	North/South line	Feet from the	East/West line	County
M	11	25S	35E		150	SOUTH	1100	WEST	LEA
¹² Dedicated Acres 320.91	¹³ Joint or Infill	¹⁴ Consolidation Code	¹⁵ Order No.						

No allowable will be assigned to this completion until all interests have been consolidated or a non-standard unit has been approved by the division.



District I
1625 N. French Dr., Hobbs, NM 88240
Phone: (575) 393-6161 Fax: (575) 393-0720
District II
811 S. First St., Artesia, NM 88210
Phone: (575) 748-1283 Fax: (575) 748-9720
District III
1000 Rio Brazos Road, Aztec, NM 87410
Phone: (505) 334-6178 Fax: (505) 334-6170
District IV
1220 S. St. Francis Dr., Santa Fe, NM 87505
Phone: (505) 476-3460 Fax: (505) 476-3462

State of New Mexico
Energy, Minerals & Natural Resources Department
OIL CONSERVATION DIVISION
1220 South St. Francis Dr.
Santa Fe, NM 87505

Form C-102
Revised August 1, 2011
Submit one copy to appropriate
District Office

☐ AMENDED REPORT

WELL LOCATION AND ACREAGE DEDICATION PLAT

¹ API Number 30-025-49396	² Pool Code 98187	³ Pool Name WC-025 G-09 S253502D; UPR WOLFCAMP
⁴ Property Code 328929	⁵ Property Name COUNTY FAIR FED COM	⁶ Well Number 701H
⁷ OGRID No. 373910	⁸ Operator Name FRANKLIN MOUNTAIN ENERGY LLC	⁹ Elevation 3246.2'

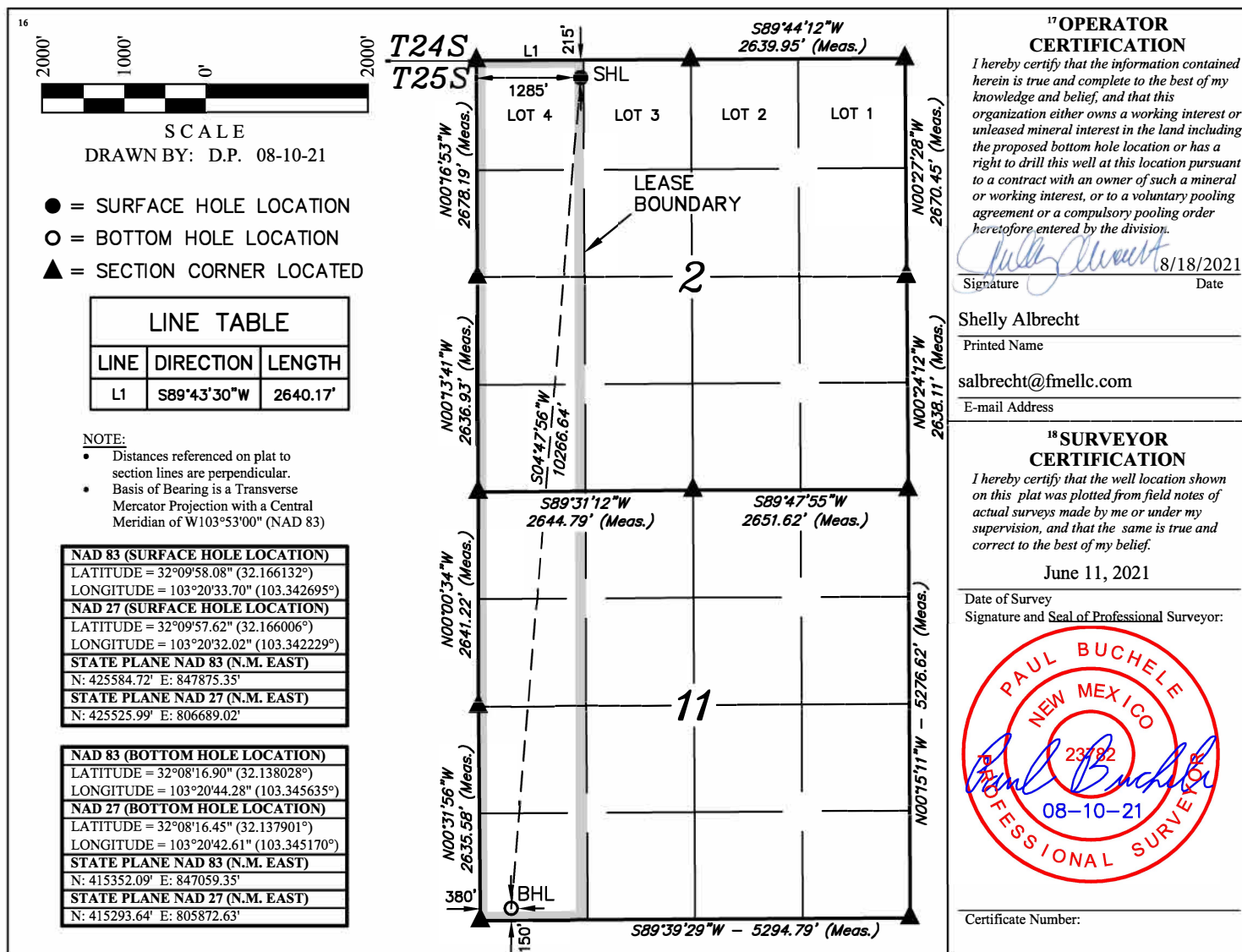
¹⁰ Surface Location

UL or lot no.	Section	Township	Range	Lot Idn	Feet from the	North/South line	Feet from the	East/West line	County
LOT 4	2	25S	35E		215	NORTH	1285	WEST	LEA

¹¹ Bottom Hole Location If Different From Surface

UL or lot no.	Section	Township	Range	Lot Idn	Feet from the	North/South line	Feet from the	East/West line	County
M	11	25S	35E		150	SOUTH	380	WEST	LEA
¹² Dedicated Acres 320.91	¹³ Joint or Infill	¹⁴ Consolidation Code	¹⁵ Order No.						

No allowable will be assigned to this completion until all interests have been consolidated or a non-standard unit has been approved by the division.



District I

1625 N. French Dr., Hobbs, NM 88240
Phone:(575) 393-6161 Fax:(575) 393-0720

District II

811 S. First St., Artesia, NM 88210
Phone:(575) 748-1283 Fax:(575) 748-9720

District III

1000 Rio Brazos Rd., Aztec, NM 87410
Phone:(505) 334-6178 Fax:(505) 334-6170

District IV

1220 S. St Francis Dr., Santa Fe, NM 87505
Phone:(505) 476-3470 Fax:(505) 476-3462

State of New Mexico
Energy, Minerals and Natural Resources
Oil Conservation Division
1220 S. St Francis Dr.
Santa Fe, NM 87505

CONDITIONS

Action 77667

CONDITIONS

Operator: Franklin Mountain Energy LLC 44 Cook Street Denver, CO 80206	OGRID: 373910
	Action Number: 77667
	Action Type: [C-103] NOI General Sundry (C-103X)

CONDITIONS

Created By	Condition	Condition Date
dmcclure	Please review the content of the Administrative Order and approved request(s) to ensure you are familiar with the authorities granted and any conditions of approval. Please contact me with any questions regarding this matter.	2/23/2022