

<b>Well Name:</b> POKER LAKE CVX JV BS	<b>Well Location:</b> T24S / R30E / SEC 23 / NENE / 32.13432 / -103.503691	<b>County or Parish/State:</b> EDDY / NM
<b>Well Number:</b> 26H	<b>Type of Well:</b> OIL WELL	<b>Allottee or Tribe Name:</b>
<b>Lease Number:</b> NMLC068905	<b>Unit or CA Name:</b>	<b>Unit or CA Number:</b>
<b>US Well Number:</b> 3001542375	<b>Well Status:</b> Producing Oil Well	<b>Operator:</b> XTO PERMIAN OPERATING LLC

Accepted for record – NMOCD gc 2/17/2022

## Notice of Intent

**Sundry ID:** 2656232

**Type of Submission:** Notice of Intent

**Type of Action:** Plug and Abandonment

**Date Sundry Submitted:** 02/08/2022

**Time Sundry Submitted:** 03:56

**Date proposed operation will begin:** 04/01/2022

**Procedure Description:** 1) MIRU plugging company. Set open top steel pit for plugging. 2) ND WH and NU 5K manual BOP. Function test BOP. 3) RU, RIH on/off tool + 2-3/8" tbg to 3,450'. Tag bridge plug. Release RBP and POOH w/tbg. 4) RU, RIH on/off tool + 2-3/8" tbg to 7,500'. Tag bridge plug. Release RBP and POOH w/tbg. 5) RU WL, and RIH WL w/ 7" CIBP. Set CIBP at 9,900'. RIH 2-3/8" tbg and spot 25 sxs Class H cmt on top of bridge plug. WOC & Tag at least 9,750'. (T/Liner & Perforations) 6) PUH w/tbg to 8,000'. Spot 25 sxs Class H cmt. WOC & Tag at least 7,850'. POOH w/tbg. (T/Bone Spring) 7) PUH w/tbg to 5,050'. Spot 25 sxs Class H cmt. WOC & Tag at least 4,900'. POOH w/tbg. (T/DV Tool) 8) RU WL, and RIH WL. Perf 7" csg at 4,130' and sqz 65 sxs Class C cmt. 9) RU 7" test packer, RIH w/tbg. WOC & Tag at least 3,750'. PUH and set packer. Load csg and pressure test to 500 psi. (Casing Shoe, T/Delaware, B/Salt) 10) Unseat 7" test packer, PUH w/tbg to 3,375'. Set packer, load annulus and pressure test to 500 psi. Load 7" csg below packer and pressure test to 500 psi. Adjust packer depth and repeat to verify depth of leak. (Est. 3,450' – 3,520') 11) RU WL, and RIH WL. Perf 7" csg at leak depth and sqz 50 sxs Class C cmt. WOC & Tag. Circulate 9.5# salt gel mud and pressure test csg to 500 psi. Notify BLM. 12) RU WL, and RIH WL. Perf 7" csg at 900' and sqz 50 sxs Class C cmt. WOC & Tag at least 750'. (T/Salt) 13) RU WL, and RIH WL. Perf 7" csg at 60' and sqz 35 sxs Class C cmt. WOC & confirm TOC at Surface. 14) ND BOP and cut off wellhead 5' below surface. RDMO PU, transport trucks, and pump truck. 15) Set P&A marker. Pull fluid from steel tank and haul to disposal. Release steel tank.

## Surface Disturbance

**Is any additional surface disturbance proposed?:** No

## NOI Attachments

**Well Name:** POKER LAKE CVX JV BS**Well Location:** T24S / R30E / SEC 23 /  
NENE / 32.13432 / -103.503691**County or Parish/State:** EDDY /  
NM**Well Number:** 26H**Type of Well:** OIL WELL**Allottee or Tribe Name:****Lease Number:** NMLC068905**Unit or CA Name:****Unit or CA Number:****US Well Number:** 3001542375**Well Status:** Producing Oil Well**Operator:** XTO PERMIAN  
OPERATING LLC

### Conditions of Approval

#### Specialist Review

Poker\_Lake\_CVX\_JV\_BS\_26H\_Sundry\_ID\_2656232\_P\_A\_20220212151105.pdf

### Operator Certification

*I certify that the foregoing is true and correct. Title 18 U.S.C. Section 1001 and Title 43 U.S.C. Section 1212, make it a crime for any person knowingly and willfully to make to any department or agency of the United States any false, fictitious or fraudulent statements or representations as to any matter within its jurisdiction. Electronic submission of Sundry Notices through this system satisfies regulations requiring a submission of Form 3160-5 or a Sundry Notice.*

**Operator Electronic Signature:** CASSIE EVANS**Signed on:** FEB 08, 2022 03:56 PM**Name:** XTO PERMIAN OPERATING LLC**Title:** Regulatory Analyst**Street Address:** 6401 Holiday Hill Road, Bldg 5**City:** Midland**State:** TX**Phone:** (432) 218-3671**Email address:** CASSIE.EVANS@EXXONMOBIL.COM

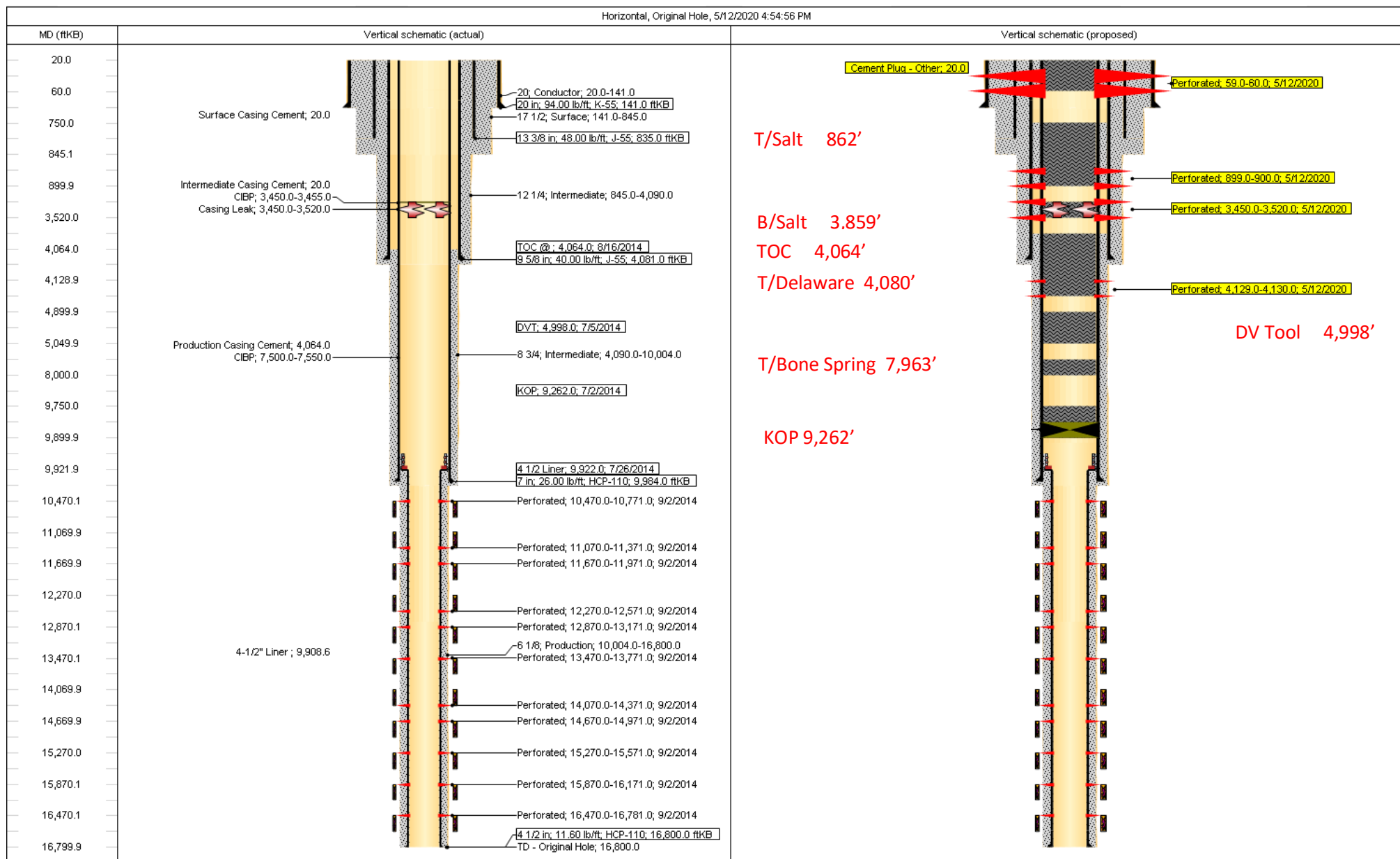
### Field Representative

**Representative Name:****Street Address:****City:****State:****Zip:****Phone:****Email address:**

### BLM Point of Contact

**BLM POC Name:** LONG VO**BLM POC Title:** Petroleum Engineer**BLM POC Phone:** 5752345972**BLM POC Email Address:** LVO@BLM.GOV**Disposition:** Approved**Disposition Date:** 02/12/2022

# Poker Lake CVX JV BS #026H Current and Proposed WBD's



## PLUG AND ABANDONMENT CONDITIONS OF APPROVAL

<b>OPERATOR'S NAME:</b>	<b>XTO Permian Operating LLC</b>
<b>LEASE NO.:</b>	<b>NMLC068905</b>
<b>WELL NAME &amp; NO.:</b>	<b>Poker Lake CVX JV BS 026H</b>
<b>US Well Number:</b>	<b>3001542375</b>
<b>LOCATION:</b>	<b>Section 23, T.24 S., R.30 E., NMPM</b>
<b>COUNTY:</b>	<b>Eddy County, New Mexico</b>
<b>Sundry ID:</b>	<b>2656232</b>

- 1) MIRU plugging company. Set open top steel pit for plugging.
- 2) ND WH and NU 5K manual BOP. Function test BOP.
- 3) RU, RIH on/off tool + 2-3/8" tbg to 3,450'. Tag bridge plug. Release RBP and POOH w/tbg.
- 4) RU, RIH on/off tool + 2-3/8" tbg to 7,500'. Tag bridge plug. Release RBP and POOH w/tbg.
- 5) RU WL, and RIH WL w/ 7" CIBP. Set CIBP at 9,900'. RIH 2-3/8" tbg and spot 25 sxs Class H cmt on top of bridge plug. WOC & Tag at least 9,750'. (T/Liner & Perforations) *Retainer Retainer*  
*Squeeze from 9900' to 10,034'*  
*Spot from 9900' to 9750' 45 SX*
- 6) PUH w/tbg to ~~8,000'~~ <sup>8013'</sup>. Spot ~~25~~ <sup>40</sup> sxs Class H cmt. WOC & Tag at least ~~7,850'~~ <sup>7833'</sup>. POOH w/tbg. (T/Bone Spring)
- 7) PUH w/tbg to 5,050'. Spot 25 sxs Class H cmt. WOC & Tag at least 4,900'. POOH w/tbg. (T/DV Tool)
- 8) RU WL, and RIH WL. Perf 7" csg at ~~4,130'~~ <sup>4150'</sup> and sqz ~~65~~ <sup>95</sup> sxs Class C cmt. *Spot from 4150' to 4064'. Perf & sqz @ 4050' to 3771'. 95 SX (In/out)*
- 9) RU 7" test packer, RIH w/tbg. WOC & Tag at least 3,750'. PUH and set packer. Load csg and pressure test to 500 psi. (Casing Shoe, T/Delaware, B/Salt)

- 10) Unseat 7" test packer, PUH w/tbg to 3,375'. Set packer, load annulus and pressure test to 500 psi. Load 7" csg below packer and pressure test to 500 psi. Adjust packer depth and repeat to verify depth of leak. (Est. 3,450' – 3,520')
- 11) RU WL, and RIH WL. Perf 7" csg at leak depth and sqz 50 sxs Class C cmt. WOC & Tag. Circulate 9.5# salt gel mud and pressure test csg to 500 psi. Notify BLM. *Tag @ least 150' from casing leak depth (in/out)*
- 12) RU WL, and RIH WL. Perf 7" csg at 900' and sqz 50 sxs Class C cmt. WOC & Tag at least 750'. *(in/out)*
- 13) RU WL, and RIH WL. Perf 7" csg at ~~60'~~<sup>150'</sup> and sqz 35 sxs Class C cmt. WOC & confirm TOC at Surface. *(in/out)*
- 14) ND BOP and cut off wellhead 5' below surface. RDMO PU, transport trucks, and pump truck.
- 15) Set P&A marker. Pull fluid from steel tank and haul to disposal. Release steel tank.

## Approval Subject to General Requirements and Special Stipulations Attached

- No more than 3000 feet between cement plugs in cased hole.
- Wait on Cement and Tag Top of Cement Requirement:
  1. Shoe, Top of Salt, Base of Salt, DV tool, Perforate and Squeeze, Open Perforation.
  2. Formation plug is optional if a solid base is established and confirmed.



Sundry ID 2656232

Plug Type	Top	Bottom	Length	Tag	Sacks	Notes
Surface Plug	0.00	150.00	150.00	Tag/Verify	35.00	Perf and Squeeze from 150' to surface. Verify at Surface. (In/Out)
Shoe Plug	776.65	885.00	108.35	Tag/Verify		
Top of Salt @ 862	803.38	912.00	108.62	Tag/Verify	50.00	Perf and Squeeze from 900' to 750'. WOC and Tag. (In/Out)
				If solid base no need to Tag (CIBP present and/or Mechanical Integrity Test), If Perf & Sqz then Tag, Leak Test all CIBP if no Open Perforations		
Casing Leak @ 3450	3365.50	3500.00	134.50	Perforations	50.00	Perf and Squeeze from leak depth to 150' above. WOC and Tag. (In/Out)
Base of Salt @ 3860	3771.40	3910.00	138.60	Tag/Verify		
Shoe Plug	3990.19	4131.00	140.81	Tag/Verify		
				If solid base no need to Tag (CIBP present and/or Mechanical Integrity Test), If Perf & Sqz then Tag, Leak Test all CIBP if no Open Perforations		
Delaware @ 4102	4010.98	4152.00	141.02	Perforations	95.00	Spot from 4150' to 4064'. WOC and Tag. Perf and Squeeze at 4050' to 3771'. (In/Out)

DV tool plug	4898.02	5048.00	149.98	Tag/Verify	25.00	Spot from 5050' to 4900'. WOC and Tag.
				If solid base no need to Tag (CIBP present and/or Mechanical Integrity Test), If Perf & Sqz then Tag, Leak Test all CIBP if no Open Perforations		
Bonesprings @ 7963	7833.37	8013.00	179.63	Perforations	40.00	Spot from 8013' to 7833'. WOC and Tag.
Kick Off Point @ 9262	9119.38	9312.00	192.62	If solid base		
Retainer @ 9900	9751.00	9950.00	199.00	If solid base		
Liner Top @ 9908	9758.92	9958.00	199.08	If solid base		
Shoe Plug	9834.16	10034.00	199.84	Tag/Verify		
						Set Retainer at 9900'. Squeeze from 9900' to 10034'. Spot from 9900' to 9750'. WOC and Tag.
Perforations Plug (If No CIBP)	10420.00	16850.00	6430.00	Tag/Verify	45.00	
Shoe Plug	16582.00	16850.00	268.00	Tag/Verify		Not Necessary



**No more than 2000' is to be allowed between plugs in open hole, and no more than 3000' between plugs in cased hole.**

**Class H >7500'**

**Class C <7500'**

**Fluid used to mix the cement in R111P shall be saturated with the salts common to the section penetrated, and in suitable proportions, but not more than 3% calcium chloride by weight of cement will be considered the desired mixture whenever possible.**

**Critical, High, Medium, Secretary : Top of salt to surface *If no salt take the deepest fresh water.***

**R111P: 50' from bottom of salt to surface**

**Class C: 1.32 ft<sup>3</sup>/sx**

**Class H: 1.06 ft<sup>3</sup>/sx**

**Onshore Order 2.III.G Drilling Abandonment Requirements: "All formations bearing usable-quality water, oil, gas, or geothermal resources, and/or a prospectively valuable deposit of minerals shall be protected.**

**Cave Karst/Potash Cement      Low**

Shoe @	835.00		
Shoe @	4081.00		
Shoe @	9984.00	TOC @	4064.00

Shoe @	16800.00	TOC @	9908.00
--------	----------	-------	---------

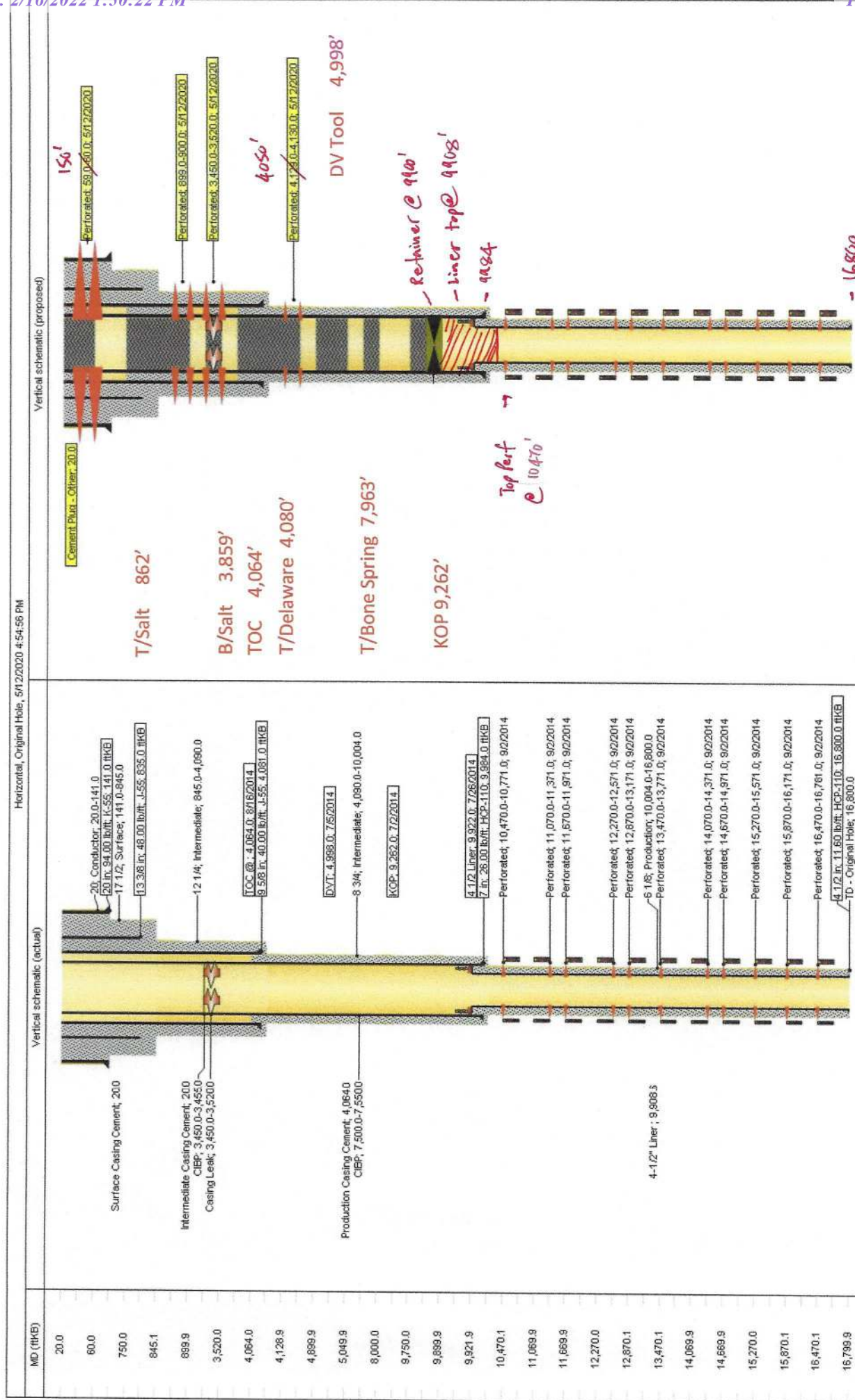
Perforatons Top @	10470.00	Perforations	16800.00
-------------------	----------	--------------	----------

DV Tool @	4998.00
-----------	---------



# Poker Lake CVX JV BS #026H Current and Proposed WBD's

Low Curve



**BUREAU OF LAND MANAGEMENT  
Carlsbad Field Office  
620 East Greene Street  
Carlsbad, New Mexico 88220  
575-234-5972**

**Permanent Abandonment of Federal Wells  
Conditions of Approval**

Failure to comply with the following Conditions of Approval may result in a Notice of Incidents of Noncompliance (INC) in accordance with 43 CFR 3163.1.

1. Plugging operations shall commence within **ninety (90)** days from the approval date of this Notice of Intent to Abandon.

**If you are unable to plug the well by the 90<sup>th</sup> day provide this office, prior to the 90<sup>th</sup> day, with the reason for not meeting the deadline and a date when we can expect the well to be plugged. Failure to do so will result in enforcement action.**

**The rig used for the plugging procedure cannot be released and moved off without the prior approval of the authorized officer. Failure to do so may result in enforcement action.**

2. **Notification:** Contact the appropriate BLM office at least 24 hours prior to the commencing of any plugging operations. For wells in Chaves and Roosevelt County, call 575-627-0272; Eddy County, call 575-361-2822; Lea County, call 575-393-3612.

3. **Blowout Preventers:** A blowout preventer (BOP), as appropriate, shall be installed before commencing any plugging operation. The BOP must be installed and maintained as per API and manufacturer recommendations. The minimum BOP requirement is a 2M system for a well not deeper than 9,090 feet; a 3M system for a well not deeper than 13,636 feet; and a 5M system for a well not deeper than 22,727 feet.

4. **Mud Requirement:** Mud shall be placed between all plugs. Minimum consistency of plugging mud shall be obtained by mixing at the rate of 25 sacks (50 pounds each) of gel per 100 barrels of **brine** water. Minimum nine (9) pounds per gallon.

5. **Cement Requirement:** Sufficient cement shall be used to bring any required plug to the specified depth and length. Any given cement volumes on the proposed plugging procedure are merely estimates and are not final. Unless specific approval is received, no plug except the surface plug shall be less than 25 sacks of cement. Any plug that requires a tag will have a minimum WOC time of 4 hours.

In lieu of a cement plug across perforations in a cased hole (not for any other plugs), a bridge plug set within 50 feet to 100 feet above the perforations shall be capped with 25 sacks of cement. If a bailer is used to cap this plug, 35 feet of cement shall be sufficient. **Before pumping or bailing cement on top of CIBP, tag will be required to verify depth. Based on depth, a tag of the cement may be deemed necessary.**



Unless otherwise specified in the approved procedure, the cement plug shall consist of either Neat Class "C", for up to 7,500 feet of depth or Neat Class "H", for deeper than 7,500 feet plugs.

6. Dry Hole Marker: All casing shall be cut-off at the base of the cellar or 3 feet below final restored ground level (whichever is deeper). **The BLM is to be notified a minimum of 4 hours prior to the wellhead being cut off to verify that cement is to surface in the casing and all annuluses. Wellhead cut off shall commence within ten (10) calendar days of the well being plugged. If the cut off cannot be done by the 10<sup>th</sup> day, the BLM is to be contacted with justification to receive an extension for completing the cut off.**

The well bore shall then be capped with a 4-inch pipe, 10-feet in length, 4 feet above ground and embedded in cement, unless otherwise noted in COA (requirements will be attached). The following information shall be permanently inscribed on the dry hole marker: well name and number, name of the operator, lease serial number, surveyed location (quarter-quarter section, section, township and range or other authorized survey designation acceptable to the authorized officer such as metes and bounds).

7. Subsequent Plugging Reporting: Within 30 days after plugging work is completed, file one original and three copies of the Subsequent Report of Abandonment, Form 3160-5 to BLM. The report should give in detail the manner in which the plugging work was carried out, the extent (by depths) of cement plugs placed, and the size and location (by depths) of casing left in the well. **Show date well was plugged.**

8. Trash: All trash, junk and other waste material shall be contained in trash cages or bins to prevent scattering and will be removed and deposited in an approved sanitary landfill. Burial on site is not permitted.

Following the submission and approval of the Subsequent Report of Abandonment, surface restoration will be required. See attached reclamation objectives.



# United States Department of the Interior

## BUREAU OF LAND MANAGEMENT

Carlsbad Field Office  
620 E. Greene St.  
Carlsbad, New Mexico 88220-6292  
www.blm.gov/nm



In Reply Refer To: 1310

### Reclamation Objectives and Procedures

**Reclamation Objective:** Oil and gas development is one of many uses of the public lands and resources. While development may have a short- or long-term effect on the land, successful reclamation can ensure the effect is not permanent. During the life of the development, all disturbed areas not needed for active support of production operations should undergo "interim" reclamation in order to minimize the environmental impacts of development on other resources and uses. At final abandonment, well locations, production facilities, and access roads must undergo "final" reclamation so that the character and productivity of the land and water are restored.

The long-term objective of final reclamation is to set the course for eventual ecosystem restoration, including the restoration of the natural vegetation community, hydrology, and wildlife habitats. In most cases this means returning the land to a condition approximating or equal to that which existed prior to the disturbance. The final goal of reclamation is to restore the character of the land and water to its pre-disturbance condition. The operator is generally not responsible for achieving full ecological restoration of the site. Instead, the operator must achieve the short-term stability, visual, hydrological, and productivity objectives of the surface management agency and take steps necessary to ensure that long-term objectives will be reached through natural processes.

To achieve these objectives, remove any and all contaminants, scrap/trash, equipment, pipelines and powerlines. Strip and remove caliche, contour the location to blend with the surrounding landscape, re-distribute the native soils, provide erosion control as needed, rip and seed as specified in the original APD COA. This will apply to well pads, facilities, and access roads. Barricade access road at the starting point. If reserve pits have not reclaimed due to salts or other contaminants, submit a plan for approval, as to how you propose to provide adequate restoration of the pit area.

1. The Application for Permit to Drill or Reenter (APD, Form 3160-3), Surface Use Plan of Operations must include adequate measures for stabilization and reclamation of disturbed lands. Oil and Gas operators must plan for reclamation, both interim and final, up front in the APD process as per Onshore Oil and Gas Order No. 1.
2. For wells and/or access roads not having an approved plan, or an inadequate plan for surface reclamation (either interim or final reclamation), the operator must submit a proposal describing the procedures for reclamation. For interim reclamation, the appropriate time for submittal would be when filing the Well Completion or Recompletion Report and Log (Form 3160-4). For final reclamation, the appropriate time for submittal would be when filing the Notice of Intent, or the Subsequent Report of Abandonment, Sundry Notices and Reports on Wells (Form 3160-5). Interim reclamation is to be completed within 6 months of well completion, and final reclamation is to be completed within 6 months of well abandonment.
3. The operator must file a Subsequent Report Plug and Abandonment (Form 3160-5) following the plugging of a well.
4. Previous instruction had you waiting for a BLM specialist to inspect the location and provide you with reclamation requirements. If you have an approved Surface Use Plan of Operation and/or an approved Sundry Notice, you are free to proceed with reclamation as per approved APD. If you have issues or concerns, contact a BLM specialist to assist you. It would be in your interest to have a BLM specialist look at the location and access road prior to the removal of reclamation



equipment to ensure that it meets BLM objectives. Upon conclusion submit a Form 3160-5, Subsequent Report of Reclamation. This will prompt a specialist to inspect the location to verify work was completed as per approved plans.

5. The approved Subsequent Report of Reclamation will be your notice that the native soils, contour and seedbed have been reestablished. If the BLM objectives have not been met the operator will be notified and corrective actions may be required.
6. It is the responsibility of the operator to monitor these locations and/or access roads until such time as the operator feels that the BLM objective has been met. If after two growing seasons the location and/or access roads are not showing the potential for successful revegetation, additional actions may be needed. When you feel the BLM objectives have been met submit a Final Abandonment Notice (FAN), Form 3160-5, stating that all reclamation requirements have been achieved and the location and/or access road is ready for a final abandonment inspection.
7. At this time the BLM specialist will inspect the location and/or access road. If the native soils and contour have been restored, and the revegetation is successful, the FAN will be approved, releasing the operator of any further liability of the location and/or access road. If the location and/or access road have not achieved the objective, you will be notified as to additional work needed or additional time being needed to achieve the objective.

If there are any questions, please feel free to contact any of the following specialists:

Jim Amos  
Supervisory Petroleum Engineering Tech  
575-234-5909 (Office), 575-361-2648 (Cell)

Arthur Arias  
Environmental Protection Specialist  
575-234-6230

Crisha Morgan  
Environmental Protection Specialist  
575-234-5987

Melissa Horn  
Environmental Protection Specialist  
575-234-5951

Kelsey Wade  
Environmental Protection Specialist  
575-234-2220

Trishia Bad Bear, Hobbs Field Station  
Natural Resource Specialist  
575-393-3612

**District I**

1625 N. French Dr., Hobbs, NM 88240  
Phone:(575) 393-6161 Fax:(575) 393-0720

**District II**

811 S. First St., Artesia, NM 88210  
Phone:(575) 748-1283 Fax:(575) 748-9720

**District III**

1000 Rio Brazos Rd., Aztec, NM 87410  
Phone:(505) 334-6178 Fax:(505) 334-6170

**District IV**

1220 S. St Francis Dr., Santa Fe, NM 87505  
Phone:(505) 476-3470 Fax:(505) 476-3462

**State of New Mexico**  
**Energy, Minerals and Natural Resources**  
**Oil Conservation Division**  
**1220 S. St Francis Dr.**  
**Santa Fe, NM 87505**

CONDITIONS

Action 82152

**CONDITIONS**

Operator: XTO PERMIAN OPERATING LLC. 6401 HOLIDAY HILL ROAD MIDLAND, TX 79707	OGRID: 373075
	Action Number: 82152
	Action Type: [C-103] NOI Plug & Abandon (C-103F)

**CONDITIONS**

Created By	Condition	Condition Date
gcordero	None	2/17/2022