

Well Name: AXI APACHE A	Well Location: T23N / R5W / SEC 9 / NWSE /	County or Parish/State: RIO ARRIBA / NM
Well Number: 7	Type of Well: CONVENTIONAL GAS WELL	Allottee or Tribe Name: JICARILLA APACHE
Lease Number: JIC77	Unit or CA Name:	Unit or CA Number:
US Well Number: 3003982398	Well Status: Abandoned	Operator: DJR OPERATING LLC

Subsequent Report

Sundry ID: 2651516

Type of Submission: Subsequent Report

Date Sundry Submitted: 01/06/2022

Date Operation Actually Began: 12/21/2021

Type of Action: Plug and Abandonment

Time Sundry Submitted: 02:34

Actual Procedure: The subject well was Plugged & Abandoned on 12/21/21 per the attached End of Well Report, Wellbore Diagram, and Marker.

SR Attachments

Actual Procedure

- AXI_Apache_A_7_PA_Marker_20220106143435.pdf
- AXI_Apache_A_7_As_Plugged_WBD_20220106143435.pdf
- AXI_Apache_A_7_EOWR_20220106143435.pdf

Well Name: AXI APACHE A	Well Location: T23N / R5W / SEC 9 / NWSE /	County or Parish/State: RIO ARRIBA / NM
Well Number: 7	Type of Well: CONVENTIONAL GAS WELL	Allottee or Tribe Name: JICARILLA APACHE
Lease Number: JIC77	Unit or CA Name:	Unit or CA Number:
US Well Number: 3003982398	Well Status: Abandoned	Operator: DJR OPERATING LLC

Operator Certification

I certify that the foregoing is true and correct. Title 18 U.S.C. Section 1001 and Title 43 U.S.C. Section 1212, make it a crime for any person knowingly and willfully to make to any department or agency of the United States any false, fictitious or fraudulent statements or representations as to any matter within its jurisdiction. Electronic submission of Sundry Notices through this system satisfies regulations requiring a submission of Form 3160-5 or a Sundry Notice.

Operator Electronic Signature: SHAW-MARIE FORD	Signed on: JAN 06, 2022 02:34 PM
Name: DJR OPERATING LLC	
Title: Regulatory Specialist	
Street Address: 1 Road 3263	
City: Aztec	State: NM
Phone: (505) 632-3476	
Email address: sford@djrlc.com	

Field Representative

Representative Name:		
Street Address:		
City:	State:	Zip:
Phone:		
Email address:		

BLM Point of Contact

BLM POC Name: KENNETH G RENNICK	BLM POC Title: Petroleum Engineer
BLM POC Phone: 5055647742	BLM POC Email Address: krennick@blm.gov
Disposition: Accepted	Disposition Date: 01/31/2022
Signature: Kenneth Rennick	

DJR Operating, LLC

P&A End of Well Report

AXI Apache A 7

API # 30-039-82398

NW/SE, Unit J, Sec 9, T23N, R5W

Rio Arriba County, NM

Spud Date: 5-19-1965

Plug Date: 12-21-2021

12-14-2021:

MIRU rig and equipment. SITP = 150, SICP = 150, BH = 80.

12-15-2021:

SD due to snow and bad roads.

12-16-2021:

Bleed down well. NDWH, NU BOP.

Pull and LD 1 1/4" tbg.

PU and TIH with 2 3/8" workstring, bit and mill. Got stuck in previously squeezed perms from 1948' to 1994'. Jarred workstring and BHA out and TOOH. Discussed with BLM and NMOCD. Got approval to set CR at 1932'.

12-17-2021:

TIH, set CR at 1932'.

P&A Plug 1: Pictured Cliffs open hole, perforations and formation top. Mix and pump 20 sx cement through CR. Reverse out from top of CR.

Run CBL log from 1932' to surface. TOC found at 1452'.

P&A Plug 2: Fruitland, Kirtland and Ojo Alamo: Mix and pump 40 sx cement above CR from 1932'. WOC. Tagged Plug 2 at 1447'.

12-20-2021:

TIH with packer, set at 411', pump down tubing, establish flow out BH. Set packer at 315', pump down casing, no BH flow. Set packer at 348', pump down casing, flow out BH. Set pack at 474', pump down tubing, flow out BH. Discuss with BLM and NMOCD. TOOH with packer, TIH with CR, set CR at 411'. Mix and pump Plugs 3 & 4: Nacimiento: with 54 sx cement, (40

sx through CR and outside casing, 4 under CR). Sting out and place 10 sx cement above CR. WOC. Tagged Plug 4 at 347'. PT casing, did not test. TIH and spot Plug 5 from 347' with 8 sx cement, pull up to 253' and reverse out. WOC.

12-21-2021:

TIH and tag Plug 5 at 261'. ND BOP.

Perforate holes at 230'. Establish rate down csg and out BH. Mix and pump Plug 6 for surface casing shoe to surface with 85 sx cement. Good returns out BH throughout.

Cut off WH. TOC in casing at 7', in annulus at surface.

Install P&A marker and top off cellar and casing with 24 sx cement.

Release rig.

All cement used: Class G cement mixed at 15.8 ppg, yield 1.15

Regulatory Representative(s): Dustin Porch, BLM

GPS Coordinates: Lat; 36.2375N, Long; 107.363056 W

DJR Operating, LLC
End of Well report
AXI Apache A 7
 API # 30-039-82398
 NW/SE, Unit J, Sec 9, T23N, R5W
 Rio Arriba County, NM

GL 6679'
 KB 6690'
 Spud Date 5/19/1965

SURF CSG

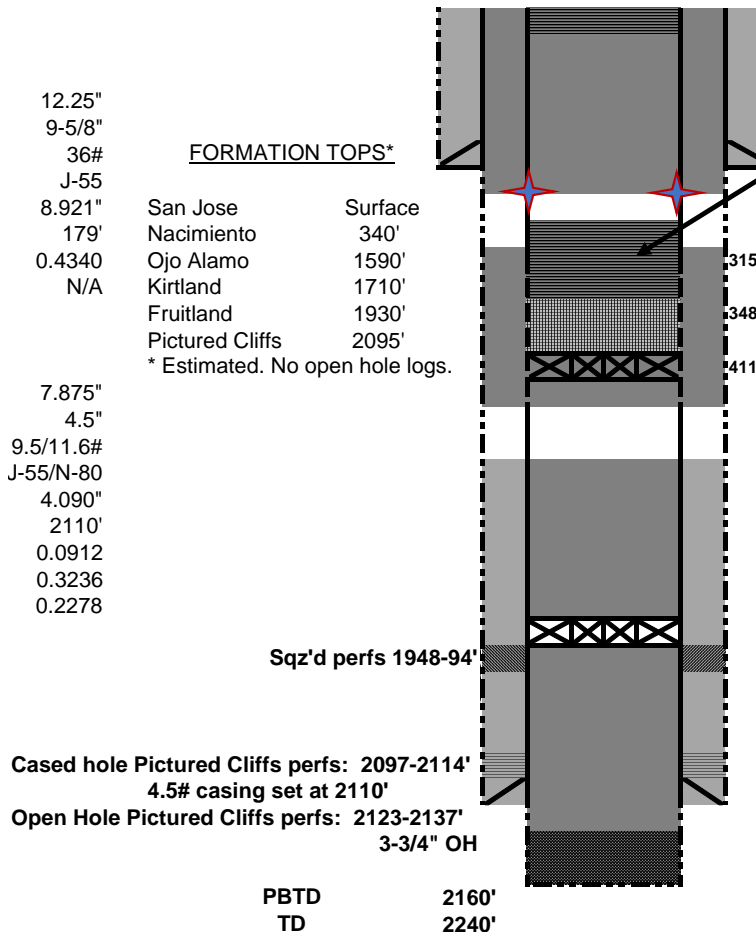
Hole size 12.25"
 Csg Size: 9-5/8"
 Wt: 36#
 Grade: J-55
 ID: 8.921"
 Depth 179'
 casing cap ft³/ft: 0.4340
 TOC: N/A

FORMATION TOPS*

San Jose	Surface
Nacimiento	340'
Ojo Alamo	1590'
Kirtland	1710'
Fruitland	1930'
Pictured Cliffs	2095'
* Estimated. No open hole logs.	

PROD CSG

Hole size 7.875"
 Csg Size: 4.5"
 Wt: 9.5/11.6#
 Grade: J-55/N-80
 ID: 4.090"
 Depth 2110'
 casing cap ft³/ft: 0.0912
 Csg/csg Ann. ft³/ft: 0.3236
 Csg/OH ft³/ft: 0.2278



12-21-2021: TOC in casing 7', TOC in annulus at surface. Top off cellar and casing with 24 sx.

12-21-2021: Plug 6: Perf holes at 230'. Establish rate out BH. Mix and pump 85 sx down casing and out BH. Good returns.

12-20/21-2021: Tagged Plug 4 at 347'. Mix and pump Plug 5: Nacimiento with 8 sx from 347'. WOC. Tagged Plug 5 at 261'.

12-20-2021: TIH with Pkr, set at 411', pump down tbg, establish flow out BH. Set pkr at 315', pump down csg, no BH flow. Set pkr at 348', pump down csg, flow out BH. Set pkr at 474', pump down tbg, flow out BH. Discuss with BLM and NMOCD. TOOH with pkr, TIH with CR, set CR at 411'. Mix and pump Plugs 3 & 4: Nacimiento with 54 sx (40 sx through CR and outside casing, 4 under CR). Sting out and place 10 sx above CR. WOC.

12-17-2021: Plug 2: Fruitland, Kirtland and Ojo Alamo: Spot balanced plug of 40 sx from 1932' to 1450'. WOC. Tagged at 1447'.

12-17-2021: Run CBL from 1932' to surface. TOC at 1452'.

12-17-2021: Plug 1: Pictured Cliffs: Mix and pump 20 sx through CR into PC perfs and open hole. Reverse out above CR.

12-17-2021: Set CR at 1932'. PT casing, did not test.

12-16-2021: Scraper got stuck in squeezed perfs at 1948-1994'. Had to jar loose. Obtained BLM and NMOCD approval to set 1st CR at 1932'.

All Cement used was Class G mixed at 15.8 ppg, yield 1.15 cu ft³
 Regulatory Representative: Dustin Porch, BLM
 GPS Coordinates: Lat; 36.2375N, Long; 107.363056 W

DJR Operating, LLC
P&A End of Well Report

AXI Apache A 7
API # 30-039-82398
NW/SE, Unit J, Sec 9, T23N, R5W
Rio Arriba County, NM

Spud Date: 5-19-1965
Plug Date: 12-21-2021





United States Department of the Interior

BUREAU OF INDIAN AFFAIRS

Jicarilla Agency

P.O. Box 167

Dulce, New Mexico 87528

IN REPLY REFER TO:

Branch of Real Estate Services

November 15, 2019

Memorandum

To: Robert Switzer, Environmental Protection Specialist
Bureau of Land Management, Farmington Field Office

From: Kurt Sandoval, Realty Officer
Bureau of Indian Affairs, Jicarilla Agency

Subject: BIA Concurrence concerning Well Pad Monument Makers

Let this serve as concurrence for the agreed upon preferred method to be used when constructing well pad monument markers on Jicarilla Apache Tribal Lands. We will eliminate the 6 ft. dry hole marker and use a permanent metal plate that will be installed at ground level, effective September 2019. The marker will contain the following information:

- Well Pad Lease Number
- Well Pad Location Name and Number
- Well Pad Legal Description, specifically Section, Township and Range
- Well Pad API Number
- Well Pad Plug Date
- Well Pad Operator Name

You may contact our office if you have any questions or concerns at (575) 759-3936. Thank you.


Realty Officer

cc: Jicarilla Oil and Gas Administration

12" x 18" MINIMUM

District I
1625 N. French Dr., Hobbs, NM 88240
Phone:(575) 393-6161 Fax:(575) 393-0720
District II
811 S. First St., Artesia, NM 88210
Phone:(575) 748-1283 Fax:(575) 748-9720
District III
1000 Rio Brazos Rd., Aztec, NM 87410
Phone:(505) 334-6178 Fax:(505) 334-6170
District IV
1220 S. St Francis Dr., Santa Fe, NM 87505
Phone:(505) 476-3470 Fax:(505) 476-3462

State of New Mexico
Energy, Minerals and Natural Resources
Oil Conservation Division
1220 S. St Francis Dr.
Santa Fe, NM 87505

CONDITIONS

Action 77107

CONDITIONS

Operator: DJR OPERATING, LLC 1 Road 3263 Aztec, NM 87410	OGRID: 371838
	Action Number: 77107
	Action Type: [C-103] Sub. Plugging (C-103P)

CONDITIONS

Created By	Condition	Condition Date
mkuehling	None	3/1/2022