

District I (575) 393-6161
 1625 N. French Dr., Hobbs, NM 88240
 District II (575) 748-1283
 811 S. First St., Artesia, NM 88210
 District III (505) 334-6178
 1000 Rio Brazos Road, Aztec, NM 87410
 District IV (505) 827-8198
 1220 S. St. Francis Dr., Santa Fe, NM 87505

State of New Mexico
 Energy Minerals and Natural Resources

Oil Conservation Division
 1220 South St. Francis Dr.
 Santa Fe, NM 87505

Form C-106
 Revised August 1, 2011

C106-906

ACT Permit No.

NOTICE OF INTENTION TO UTILIZE AUTOMATIC CUSTODY TRANSFER EQUIPMENT

Operator Enduring Resources IV, LLC

Address 200 Energy Court Farmington, NM 87401 County San Juan

Lease(s) to be served by this ACT Unit: NMNM144419X (Greater Lybrook Unit)

Pool(s) to be served by this ACT Unit (98157) LYBROOK MANCOS W

Location of ACT System: Unit C Section 27 Township 23N Range 9W

Order No. authorizing commingling between leases if more than one lease is to be served by this system.

N/A Date

Order No. authorizing commingling between pools if more than one pool is to be served by this system

N/A Date N/A

Authorized transporter of oil from this system Whiptail Midstream

Transporter's address 15 West 6th Street Suite 2901 Tulsa OK 74119

Maximum expected daily through-put for this system: 4,000 BBL/Day

If system fails to transfer oil due to malfunction or otherwise, waste by overflow will be averted by:

CHECK ONE: A. ☐ Automatic shut-down facilities B. ☒ Providing adequate available capacity to receive production
 as required by 19.15.18.15.C(8) NMAC during maximum unattended time of lease operation
 19.15.18.15.C(9) NMAC

If "A" above is checked, will flowing wells be shut-in at the header manifold or at the wellhead?

NA Maximum well-head shut-in pressure N/A

If "B" above is checked, how much storage capacity is available above the normal high working level of the

surge tank 175 BBLs.

What is the normal maximum unattended time of lease operation? Sixteen (16) Hours.

What device will be used for measuring oil in this ACT unit?

CHECK ONE: ☐ Positive displacement meter ☐ Weir-type measuring vessel
☐ Positive volume metering chamber ☒ Other; describe Coriolis Meter

Remarks: This LACT will be selling to pipeline.

OPERATOR:

I hereby certify above information is true and complete to best of my knowledge and subject ACT system will be installed and operated in accordance with Rule 19.15.18.15 NMAC. Approval of this Form C-106 does not eliminate necessity of an approved C-104 prior to running any oil or gas from this system.

Signature Heather Huntington

Printed Name & Title Heather Huntington

E-mail Address hhuntington@enduringresources.com

Date 3/9/22 Telephone (505) 636-9751

OIL CONSERVATION DIVISION

Approved by: Dean R McClure

Title: Petroleum Engineer

Date: 03/09/2022

Operation of the equipment shall be performed in compliance with 19.15.18.15 NMAC.

INSTRUCTIONS: Submit one copy of Form C-106 with following attachments to appropriate district office.

- 1) Lease plat showing all wells which will be produced in ACT system.
- 2) Schematic diagram of battery and ACT equipment showing all major components and means employed to prove accuracy of measuring device.
- 3) Letter from transporter agreeing to utilization of ACT system as shown on schematic diagram.

**NOTICE OF INTENTION TO UTILIZE AUTOMATIC CUSTODY TRANSFER EQUIPMENT
W LYBROOK UNIT 730H/763H/830H/861H/863H PIPELINE LACT UNIT:**

WELLS TO BE SERVED BY PIPELINE LACT UNIT:

- **W LYBROOK UNIT 730H/ API # 30-045-35843/ UNIT C Sec. 27, T23N, R9W, NMPM**
- **W LYBROOK UNIT 763H/ API # 30-045-38200/ UNIT C Sec. 27, T23N, R9W, NMPM**
- **W LYBROOK UNIT 830H/ API # 30-045-35814/ UNIT C Sec. 27, T23N, R9W, NMPM**
- **W LYBROOK UNIT 861H/ API # 30-045-35844/ UNIT C Sec. 27, T23N, R9W, NMPM**
- **W LYBROOK UNIT 863H/ API # 30-045-38189/ UNIT C Sec. 27, T23N, R9W, NMPM**

19.15.18.15 AUTOMATIC CUSTODY TRANSFER EQUIPMENT:

A. Oil shall be received and measured in facilities of an approved design. The facilities shall permit the testing of each well at reasonable intervals and may be comprised of manually gauged, closed stock tanks for which the operator of the ACT system has prepared proper strapping tables, or of ACT equipment. The division shall permit ACT equipment's use only after the operator complies with the following. The operator shall file with the division form C-106 and receive approval for use of the ACT equipment prior to transferring oil through the ACT system. The carrier shall not accept delivery of oil through the ACT system until the division has approved form C-106.

- ***Summary is attached to Form C-106 Notice of Intent to Utilize Automatic Custody Transfer Equipment***

B. The operator of the ACT system shall submit form C-106 to the appropriate division district office, which is accompanied by the following:

- (1) plat of the lease showing all wells that the any well operator will produce into the ACT system;
 - ***Attached as part of Form C-106 Notice of Intent***
- (2) schematic diagram of the ACT equipment, showing on the diagram all major components such as surge tanks and their capacity, extra storage tanks and their capacity, transfer pumps, monitors, reroute valves, treaters, samplers, strainers, air and gas eliminators, back pressure valves and metering devices (indicating type and capacity, *i.e.* whether automatic measuring tank, positive volume metering chamber, weir-type measuring vessel or positive displacement meter); the schematic diagram shall also show means employed to prove the measuring device's accuracy; and

- ***Attached as part of Form C-106 Notice of Intent***

- (3) letter from transporter agreeing to utilization of ACT system as shown on schematic diagram.

- ***Attached as part of Form C-106 Notice of Intent***

C. The division shall not approve form C-106 unless the operator of the ACT system will install and operate the ACT system in compliance with the following requirements.

- (1) Provision is made for accurate determination and recording of uncorrected volume and applicable temperature, or of temperature corrected volume. The system's overall accuracy shall equal or surpass manual methods.

- ***The LACT system is more accurate when compared to a manual tank sale. It is proved per BLM Onshore Order #4 Measurement of Oil and API MPMS Chapter 4 Proving Systems; with a volumetric prover that meets the requirements set forth in Onshore Order #4. The LACT also has a temperature RTD which will be calibrated semi-annually, unless more frequent verification is requested by the division.***

- (2) Provision is made for representative sampling of the oil transferred for determination of API gravity and BS&W content.

- ***The LACT is equipped with a flow proportional sampler (sample probe and actuated valve). The sampled fluid is stored in a sealed cylinder that is used for API gravity and S&W determination.***

- (3) Provision is made if required by either the oil's producer or the transporter to give adequate assurance that the ACT system runs only merchantable oil.

- ***The LACT is equipped with a water cut analyzer that communicates with the flow computer. When the S&W set point is reached the divert valve will engage sending non-merchantable oil to a divert tank. The set point can be adjusted in the flow computer but only if agreed upon by both shipper and producer.***

(4) Provision is made for set-stop counters to stop the flow of oil through the ACT system at or prior to the time the allowable has been run. Counters shall provide non-reset totalizers that are visible for inspection at all times.

- ***The Coriolis meter has non-resettable totalizer which is always visibly available on the LCD display.***

(5) Necessary controls and equipment are enclosed and sealed, or otherwise arranged to provide assurance against, or evidence of, accidental or purposeful mismeasurement resulting from tampering.

- ***Required ports are sealed and tracked in the seal log.***

(6) The ACT system's components are properly sized to ensure operation within the range of their established ratings. All system components that require periodic calibration or inspection for proof of continued accuracy are readily accessible; the frequency and methods of the calibration or inspection shall be as set forth in Paragraph (12) of Subsection C of 19.15.18.15 NMAC.

- ***The Coriolis is proved per BLM Onshore Order #4 Measurement of Oil and API MPMS Chapter 4 Proving Systems; with a volumetric prover that meets the requirements set forth in Onshore Order #4. The prover is NIST traceable and water drawn on a bi-annual basis. Proving will be consistent with Onshore Order #4, unless a variance is granted by the Division. NMOCD representatives are sent the schedule to witness if desired. The temperature transmitter is verified on a semi-annual basis, unless more frequent verification is requested by the Division. The water cut analyzer is calibrated as needed.***

(7) The control and recording system includes adequate fail-safe features that provide assurance against mismeasurement in the event of power failure, or the failure of the ACT system's component parts.

- ***In the event of power failure, the divert valve mechanically goes to "failed state" and no longer sales oil but only sends it to the divert tank.***
- ***All of the historized volume data is stored in flow computer memory with battery backup and is also transmitted by SCADA, multiple times a day, to an office server. So even during a power failure no oil volume is lost.***
- ***In the event of a malfunction, the LACT unit is programmed to shut off and divert valve is forced to close and no longer sales oil but only sends it to the divert tank. The malfunction is also logged by the flow computer.***

(8) The ACT system and allied facilities include fail-safe equipment as may be necessary, including high level switches in the surge tank or overflow storage tank that, in the event of power failure or malfunction of the ACT or other equipment, will shut down artificially lifted wells connected to the ACT system and will shut in flowing wells at the well-head or at the header manifold, in which latter case the operator of the ACT system shall pressure test all flowlines to at least 1½ times the maximum well-head shut-in pressure prior to the ACT system's initial use and every two years thereafter.

- ***Hi level switches are in place and will shut the well in at the inlet to the production unit in the event of a full tank. Flow lines were tested to 1 ½ times shut in pressure at initial construction. Testing will commence every two years to ensure piping integrity.***

(9) As an alternative to the requirements of Paragraph (8) of Subsection C of 19.15.18.15 NMAC the producer shall provide and at all times maintain a minimum of available storage capacity above the normal high working level of the surge tank to receive and hold the amount of oil that may be produced during maximum unattended time of lease operation.

- ***N/A***

(10) In all ACT systems employing automatic measuring tanks, weir-type measuring vessels, positive volume metering chambers or any other volume measuring container, the container and allied components shall be properly calibrated prior to initial use and shall be operated, maintained and inspected as necessary to ensure against incrustation, changes in clingage factors, valve leakage or other leakage and improper action of floats, level detectors, etc.

- ***N/A – Coriolis Meter***

(11) In ACT systems employing positive displacement meters, the meter and allied components shall be properly calibrated prior to initial use and shall be operated, maintained and inspected as necessary to ensure against oil mismeasurement.

- ***The Coriolis is proved per BLM Onshore Order #4 Measurement of Oil and API MPMS Chapter 4 Proving Systems; with a volumetric prover that meets the requirements set forth in Onshore***

Order #4. The prover is NIST traceable and water drawn on a bi-annual basis. Monthly proving will continue per the rule, unless a variance is granted by the Division. NMOCD representatives are sent the schedule to witness if desired. The temperature transmitter is verified on a semi-annual basis, unless more frequent verification is requested by the Division.

(12) The operator of the ACT system shall check the measuring and recording devices of ACT systems for accuracy at least once each month unless it has obtained an exception to such determination from the division. Where applicable, the operator of the ACT system shall use API standard 1101, Measurement of Petroleum Hydrocarbons by Positive Displacement Meter. Meters may be proved against master meters, portable prover tanks or prover tanks permanently installed on the lease. If the operator of the ACT system uses permanently installed prover tanks, the distance between the opening and closing levels and the provision for determining the opening and closing readings shall be sufficient to detect variations of 5/100 of one percent. The operator of the ACT system shall file reports of determination on the division form entitled "meter test report" or on another acceptable form in duplicate with the appropriate division district office.

- ***The Coriolis is proved per BLM Onshore Order #4 Measurement of Oil and API MPMS Chapter 4 Proving Systems; with a volumetric prover that meets the requirements set forth in Onshore Order #4. The prover is NIST traceable and water drawn on a bi-annual basis. Monthly proving will continue per the rule, unless a variance is granted by the Division. NMOCD representatives are sent the schedule to witness if desired. The temperature transmitter is verified on a semi-annual basis, unless more frequent verification is requested by the Division.***

(13) To obtain an exception to the requirement in Paragraph (12) of Subsection C of 19.15.18.15 NMAC that all measuring and recording devices be checked for accuracy once each month, either the producer or transporter may file a request with the director setting forth facts pertinent to the exception. The application shall include a history of the average factors previously obtained, both tabulated and plotted on a graph of factors versus time, showing that the particular installation has experienced no erratic drift. The applicant shall also furnish evidence that the other interested party has agreed to the exception. The director may then set the frequency for determination of the system's accuracy at the interval which the director deems prudent.

- *N/A*

D. The division may revoke its approval of an ACT system's form C-106 if the system's operator fails to operate it in compliance with 19.15.18.15 NMAC.

District I
1825 N. Church Ave., Hobbs, NM 88240
Phone: (575) 393-6161 Fax: (575) 393-0720
District II
811 S. First Street, Artesia, NM 88210
Phone: (575) 748-1283 Fax: (575) 748-9720
District III
1000 Rio Brazos Road, Aztec, NM 87410
Phone: (505) 334-6178 Fax: (505) 334-6170
District IV
1220 S. St. Francis Drive, Santa Fe, NM 87505
Phone: (505) 476-3460 Fax: (505) 476-3462

State of New Mexico
Energy, Minerals & Natural Resources Department

Form C-102
Revised August 1, 2011 Page 5 of 15

Submit one copy to
Appropriate District Office

OIL CONSERVATION DIVISION
1220 South St. Francis Drive
Santa Fe, NM 87505

☐ AMENDED REPORT

WELL LOCATION AND ACREAGE DEDICATION PLAT

¹ API Number 30-045-35843		² Pool Code 98157		³ Pool Name LYBROOK MANCOS W	
⁴ Property Code 321259		⁵ Property Name W LYBROOK UNIT			⁶ Well Number 730H
⁷ GRID No. 372286		⁸ Operator Name ENDURING RESOURCES, LLC			⁹ Elevation 6641'

¹⁰ Surface Location

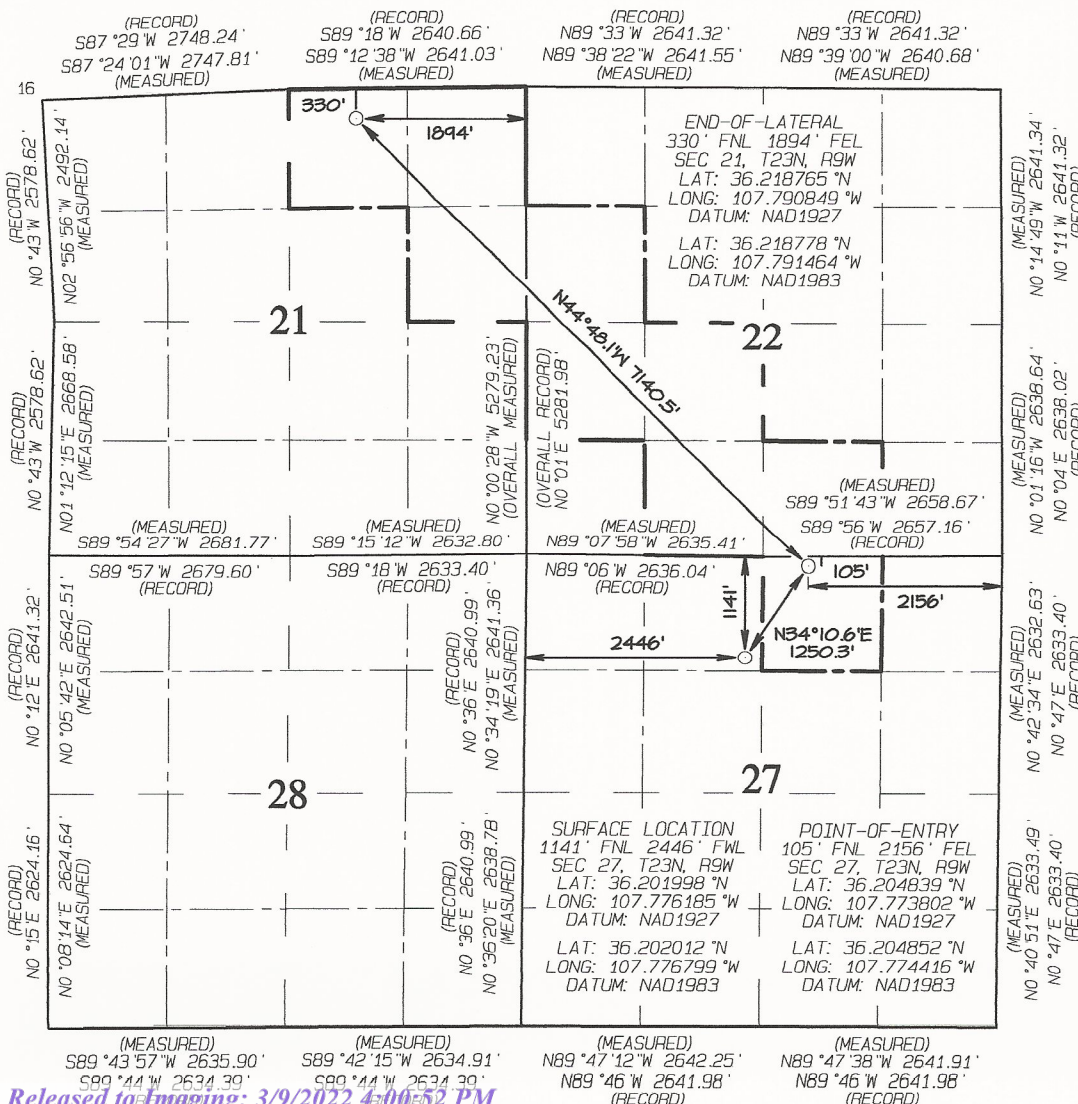
UL or lot no.	Section	Township	Range	Lot Idn	Feet from the	North/South line	Feet from the	East/West line	County
C	27	23N	9W		1141	NORTH	2446	WEST	SAN JUAN

¹¹ Bottom Hole Location If Different From Surface

UL or lot no.	Section	Township	Range	Lot Idn	Feet from the	North/South line	Feet from the	East/West line	County
B	21	23N	9W		330	NORTH	1894	EAST	SAN JUAN

¹² Dedicated Acres 360.00 NW/4 NE/4 - Section 27 SW/4 NW/4, N/2 SW/4 SE/4 SW/4, SW/4 SE/4 - Section 22 N/2 NE/4, SE/4 NE/4 - Section 21			¹³ Joint or Infill	¹⁴ Consolidation Code	¹⁵ Order No. R-14051 - 12,807.24 Acres
--	--	--	-------------------------------	----------------------------------	--

NO ALLOWABLE WILL BE ASSIGNED TO THIS COMPLETION
UNTIL ALL INTERESTS HAVE BEEN CONSOLIDATED OR A
NON-STANDARD UNIT HAS BEEN APPROVED BY THE DIVISION



¹⁷ OPERATOR CERTIFICATION

I hereby certify that the information contained herein is true and complete to the best of my knowledge and belief, and that this organization either owns a working interest or unleased mineral interest in the land including the proposed bottom-hole location or has a right to drill this well at this location pursuant to a contract with an owner of such a mineral or working interest, or to a voluntary pooling agreement or a compulsory pooling order heretofore entered by the division.

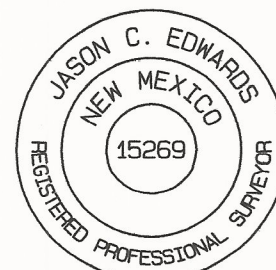
Heather Huntington 1-13-21
Signature Date
Heather Huntington
Printed Name
hhuntington@enduringresources.com
E-mail Address

¹⁸ SURVEYOR CERTIFICATION

I hereby certify that the well location shown on this plat was plotted from field notes of actual surveys made by me or under my supervision, and that the same is true and correct to the best of my belief.

Date Revised: JANUARY 14, 2020
Date of Survey: MARCH 10, 2016

Signature and Seal of Professional Surveyor



JASON C. EDWARDS
Certificate Number 15269

1625 N. French Drive, Hobbs, NM 88240
Phone: (575) 393-6161 Fax: (575) 393-0720District II
811 S. First Street, Artesia, NM 88210
Phone: (575) 748-1283 Fax: (575) 748-9720District III
1000 Rio Brazos Road, Aztec, NM 87410
Phone: (505) 334-6178 Fax: (505) 334-6170District IV
1220 S. St. Francis Drive, Santa Fe, NM 87505
Phone: (505) 476-3460 Fax: (505) 476-3462State of New Mexico
Energy, Minerals & Natural Resources DepartmentForm **Page 6 of 15**
Revised August 1, 2011Submit one copy to
Appropriate District OfficeOIL CONSERVATION DIVISION
1220 South St. Francis Drive
Santa Fe, NM 87505☐ AMENDED REPORT

WELL LOCATION AND ACREAGE DEDICATION PLAT

¹ API Number 30-045-38200		² Pool Code 98157	³ Pool Name LYBROOK MANCOS W
⁴ Property Code 321259	⁵ Property Name W LYBROOK UNIT		⁶ Well Number 763H
⁷ GRID No. 372286	⁸ Operator Name ENDURING RESOURCES, LLC		⁹ Elevation 6641'

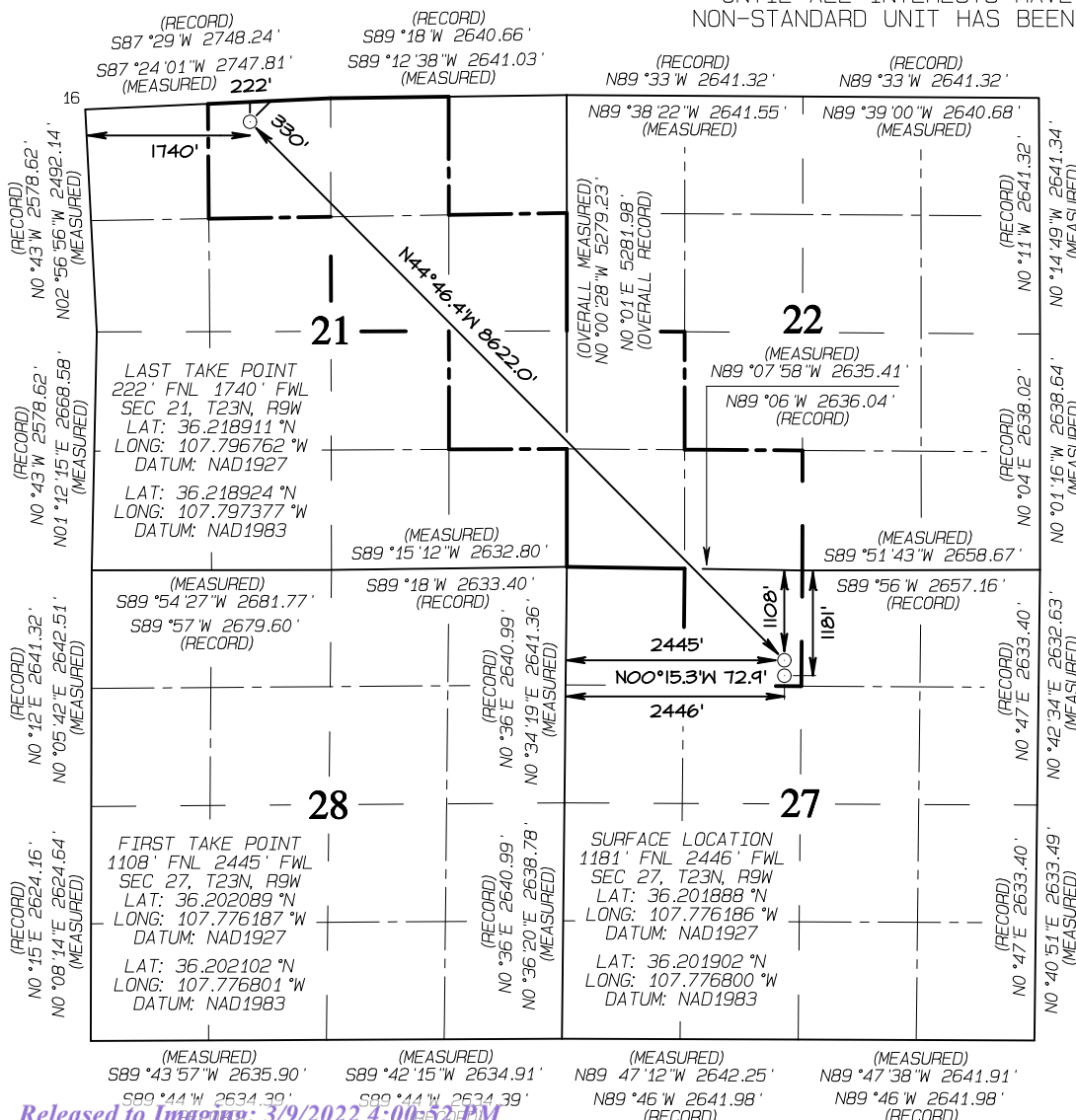
¹⁰ Surface Location

UL or lot no.	Section	Township	Range	Lot Idn	Feet from the	North/South line	Feet from the	East/West line	County
C	27	23N	9W		1181	NORTH	2446	WEST	SAN JUAN

¹¹ Bottom Hole Location If Different From Surface

UL or lot no.	Section	Township	Range	Lot Idn	Feet from the	North/South line	Feet from the	East/West line	County
C	21	23N	9W		222	NORTH	1740	WEST	SAN JUAN

¹² Dedicated Acres 360.00	NE/4 NW/4 - Section 27 NE/4 NW/4, NW/4 NE/4 S/2 NE/4, NE/4 SE/4 - Section 21 W/2 SW/4, SE/4 SW/4 - Section 22	¹³ Joint or Infill	¹⁴ Consolidation Code	¹⁵ Order No. R-14051 - 12,807.24 Acres
---	--	-------------------------------	----------------------------------	--

NO ALLOWABLE WILL BE ASSIGNED TO THIS COMPLETION
UNTIL ALL INTERESTS HAVE BEEN CONSOLIDATED OR A
NON-STANDARD UNIT HAS BEEN APPROVED BY THE DIVISION¹⁷ OPERATOR CERTIFICATION

I hereby certify that the information contained herein is true and complete to the best of my knowledge and belief, and that this organization either owns a working interest or unleased mineral interest in the land including the proposed bottom-hole location or has a right to drill this well at this location pursuant to a contract with an owner of such a mineral or working interest, or to a voluntary pooling agreement or a compulsory pooling order heretofore entered by the division.

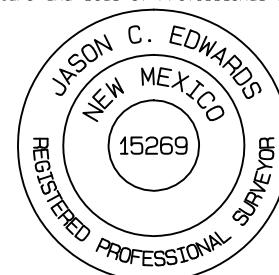
Heather Huntington 1/13/22
Signature Date
Heather Huntington
Printed Name
hhuntington@enduringresources.com
E-mail Address

¹⁸ SURVEYOR CERTIFICATION

I hereby certify that the well location shown on this plat was plotted from field notes of actual surveys made by me or under my supervision, and that the same is true and correct to the best of my belief.

Date Revised: OCTOBER 26, 2021
Date of Survey: MARCH 10, 2016

Signature and Seal of Professional Surveyor



JASON C. EDWARDS
Certificate Number 15269

1625 N. French Drive, Hobbs, NM 88240
Phone: (575) 393-6161 Fax: (575) 393-0720

District II
811 S. First Street, Artesia, NM 88210
Phone: (575) 748-1283 Fax: (575) 748-9720

District III
1000 Rio Brazos Road, Aztec, NM 87410
Phone: (505) 334-6178 Fax: (505) 334-6170

District IV
1220 S. St. Francis Drive, Santa Fe, NM 87505
Phone: (505) 476-3460 Fax: (505) 476-3462

OIL CONSERVATION DIVISION

1220 South St. Francis Drive
Santa Fe, NM 87505

☐ AMENDED REPORT

WELL LOCATION AND ACREAGE DEDICATION PLAT

¹ API Number 30-045-35814		² Pool Code 98157		³ Pool Name LYBROOK MANCOS W	
⁴ Property Code 321259		⁵ Property Name W LYBROOK UNIT			⁶ Well Number 830H
⁷ OGRID No. 372286		⁸ Operator Name ENDURING RESOURCES, LLC			⁹ Elevation 6641'

¹⁰ Surface Location

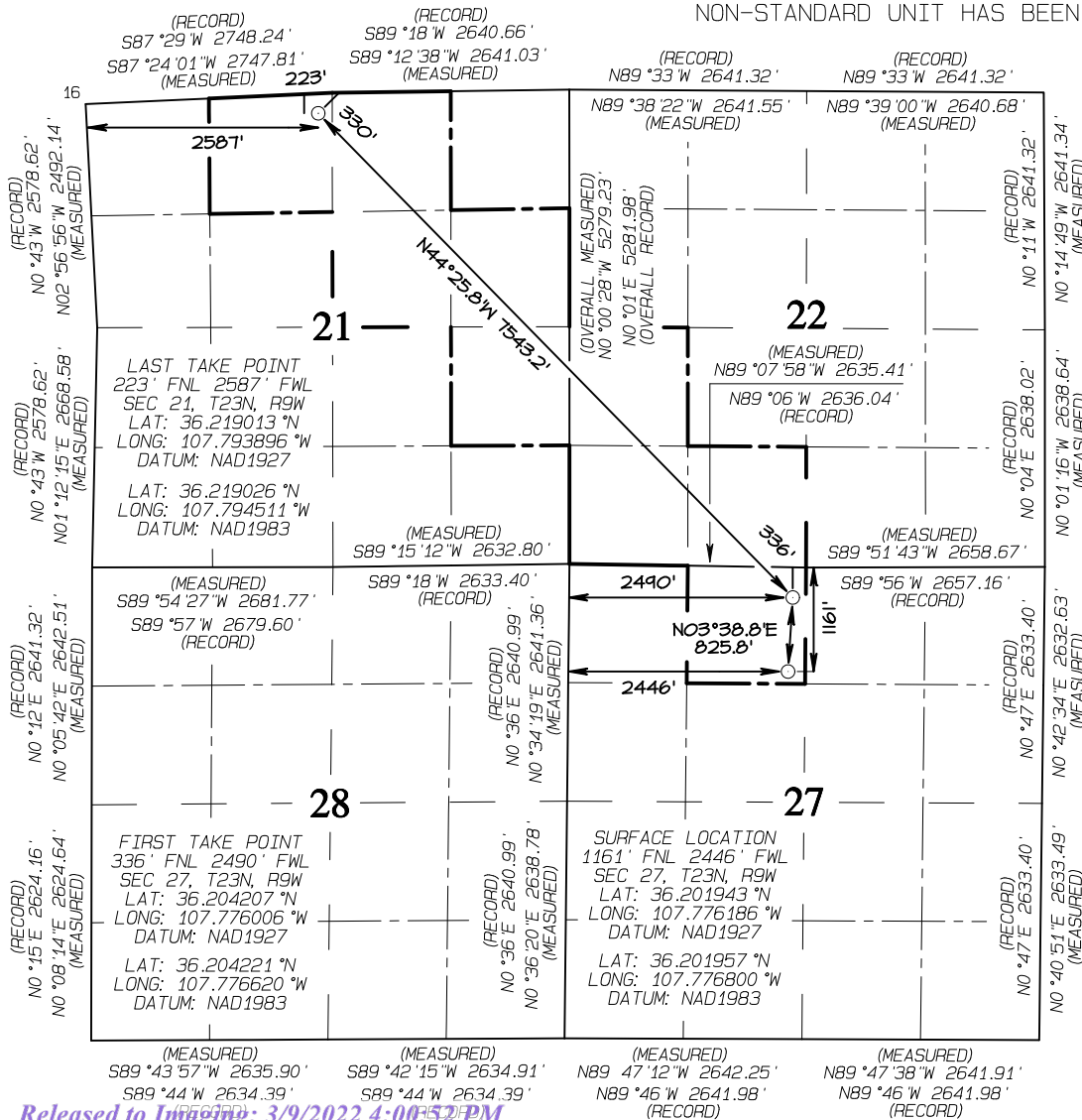
UL or lot no.	Section	Township	Range	Lot Idn	Feet from the	North/South line	Feet from the	East/West line	County
C	27	23N	9W		1161	NORTH	2446	WEST	SAN JUAN

¹¹ Bottom Hole Location If Different From Surface

UL or lot no.	Section	Township	Range	Lot Idn	Feet from the	North/South line	Feet from the	East/West line	County
C	21	23N	9W		223	NORTH	2587	WEST	SAN JUAN

¹² Dedicated Acres 360.00 NE/4 NW/4 - Section 27 NE/4 NW/4, W/2 NE/4 SE/4 NE/4, NE/4 SE/4 - Section 21 W/2 SW/4, SE/4 SW/4 - Section 22	¹³ Joint or Infill	¹⁴ Consolidation Code	¹⁵ Order No. R-14051 - 12,807.24 Acres
NO ALLOWABLE WILL BE ASSIGNED TO THIS COMPLETION UNTIL ALL INTERESTS HAVE BEEN CONSOLIDATED OR A			

NO ALLOWABLE WILL BE ASSIGNED TO THIS COMPLETION
UNTIL ALL INTERESTS HAVE BEEN CONSOLIDATED OR A
NON-STANDARD UNIT HAS BEEN APPROVED BY THE DIVISION



¹⁷ OPERATOR CERTIFICATION

I hereby certify that the information contained herein is true and complete to the best of my knowledge and belief, and that this organization either owns a working interest or unleased mineral interest in the land including the proposed bottom-hole location or has a right to drill this well at this location pursuant to a contract with an owner of such a mineral or working interest, or to a voluntary pooling agreement or a compulsory pooling order heretofore entered by the division.

Heath H. 1/13/22
Signature Date

Printed Name

E-mail Address

¹⁸ SURVEYOR CERTIFICATION

I hereby certify that the well location shown on this plat was plotted from field notes of actual surveys made by me or under my supervision, and that the same is true and correct to the best of my belief.

Date Revised: OCTOBER 26, 2021
Date of Survey: MARCH 10, 2016

Signature and Seal of Professional Surveyor



JASON C. EDWARDS

Certificate Number	15269
--------------------	-------

District I
811 S. First Street, Artesia, NM 88210
Phone: (575) 393-6161 Fax: (575) 393-0720

District II
811 S. First Street, Artesia, NM 88210
Phone: (575) 748-1283 Fax: (575) 748-9720

District III
1000 Rio Brazos Road, Aztec, NM 87410
Phone: (505) 334-6178 Fax: (505) 334-6170

District IV
1220 S. St. Francis Drive, Santa Fe, NM 87505
Phone: (505) 476-3460 Fax: (505) 476-3462

Submit one copy to
Appropriate District Office

OIL CONSERVATION DIVISION

1220 South St. Francis Drive
Santa Fe, NM 87505

☐ AMENDED REPORT

WELL LOCATION AND ACREAGE DEDICATION PLAT

¹ API Number 30-045-35844		² Pool Code 98157	³ Pool Name LYBROOK MANCOS W
⁴ Property Code 321259	⁵ Property Name W LYBROOK UNIT		⁶ Well Number 861H
⁷ OGRID No. 372286	⁸ Operator Name ENDURING RESOURCES, LLC		⁹ Elevation 6641'

¹⁰ Surface Location

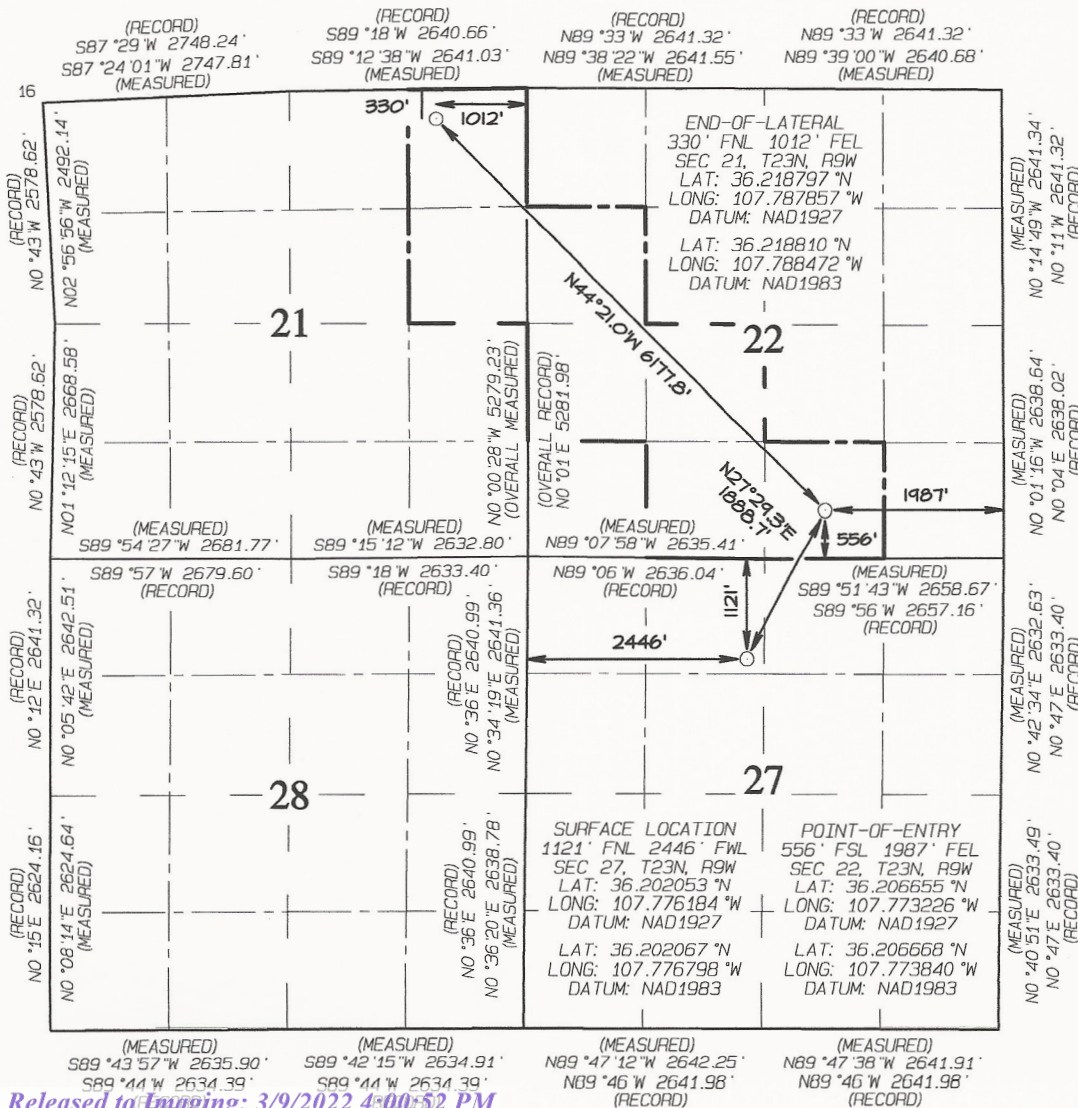
UL or lot no.	Section	Township	Range	Lot Idn	Feet from the	North/South line	Feet from the	East/West line	County
C	27	23N	9W		1121	NORTH	2446	WEST	SAN JUAN

¹¹ Bottom Hole Location If Different From Surface

UL or lot no.	Section	Township	Range	Lot Idn	Feet from the	North/South line	Feet from the	East/West line	County
A	21	23N	9W		330	NORTH	1012	EAST	SAN JUAN

¹² Dedicated Acres 280.00 E/2 NE/4 - Section 21 SW/4 NW/4, N/2 SW/4 SE/4 SW/4, SW/4 SE/4 - Section 22	¹³ Joint or Infill	¹⁴ Consolidation Code	¹⁵ Order No. R-14051 - 12,807.24 Acres
NO ALLOWABLE WILL BE ASSIGNED TO THIS COMPLETION			

NO ALLOWABLE WILL BE ASSIGNED TO THIS COMPLETION
UNTIL ALL INTERESTS HAVE BEEN CONSOLIDATED OR A
NON-STANDARD UNIT HAS BEEN APPROVED BY THE DIVISION



17 OPERATOR CERTIFICATION

I hereby certify that the information contained herein is true and complete to the best of my knowledge and belief, and that this organization either owns a working interest or unleased mineral interest in the land including the proposed bottom-hole location or has a right to drill this well at this location pursuant to a contract with an owner of such a mineral or working interest, or to a voluntary pooling agreement or a compulsory pooling order heretofore entered by the division.

1/13/22

Signature _____ Date _____
Heather Huntington
Printed Name _____
hhuntington@enduringresources.com
E-mail Address _____

¹⁸ SURVEYOR CERTIFICATION

I hereby certify that the well location shown on this plat was plotted from field notes of actual surveys made by me or under my supervision, and that the same is true and correct to the best of my belief.

Date Revised: JANUARY 14, 2020
Date of Survey: MARCH 10, 2016

Signature and Seal of Professional Surveyor



JASON C. EDWARDS

Certificate Number 15269

1625 N. French Drive, Hobbs, NM 88240
Phone: (575) 393-6161 Fax: (575) 393-0720District II
811 S. First Street, Artesia, NM 88210
Phone: (575) 748-1283 Fax: (575) 748-9720District III
1000 Rio Brazos Road, Aztec, NM 87410
Phone: (505) 334-6178 Fax: (505) 334-6170District IV
1220 S. St. Francis Drive, Santa Fe, NM 87505
Phone: (505) 476-3460 Fax: (505) 476-3462State of New Mexico
Energy, Minerals & Natural Resources DepartmentForm **Page 9 of 15**
Revised August 1, 2011Submit one copy to
Appropriate District Office**OIL CONSERVATION DIVISION**
1220 South St. Francis Drive
Santa Fe, NM 87505☐ AMENDED REPORT

WELL LOCATION AND ACREAGE DEDICATION PLAT

¹ API Number 30-045-38189		² Pool Code 98157	³ Pool Name LYBROOK MANCOS W
⁴ Property Code 321259	⁵ Property Name W LYBROOK UNIT		⁶ Well Number 863H
⁷ GRID No. 372286	⁸ Operator Name ENDURING RESOURCES, LLC		⁹ Elevation 6641'

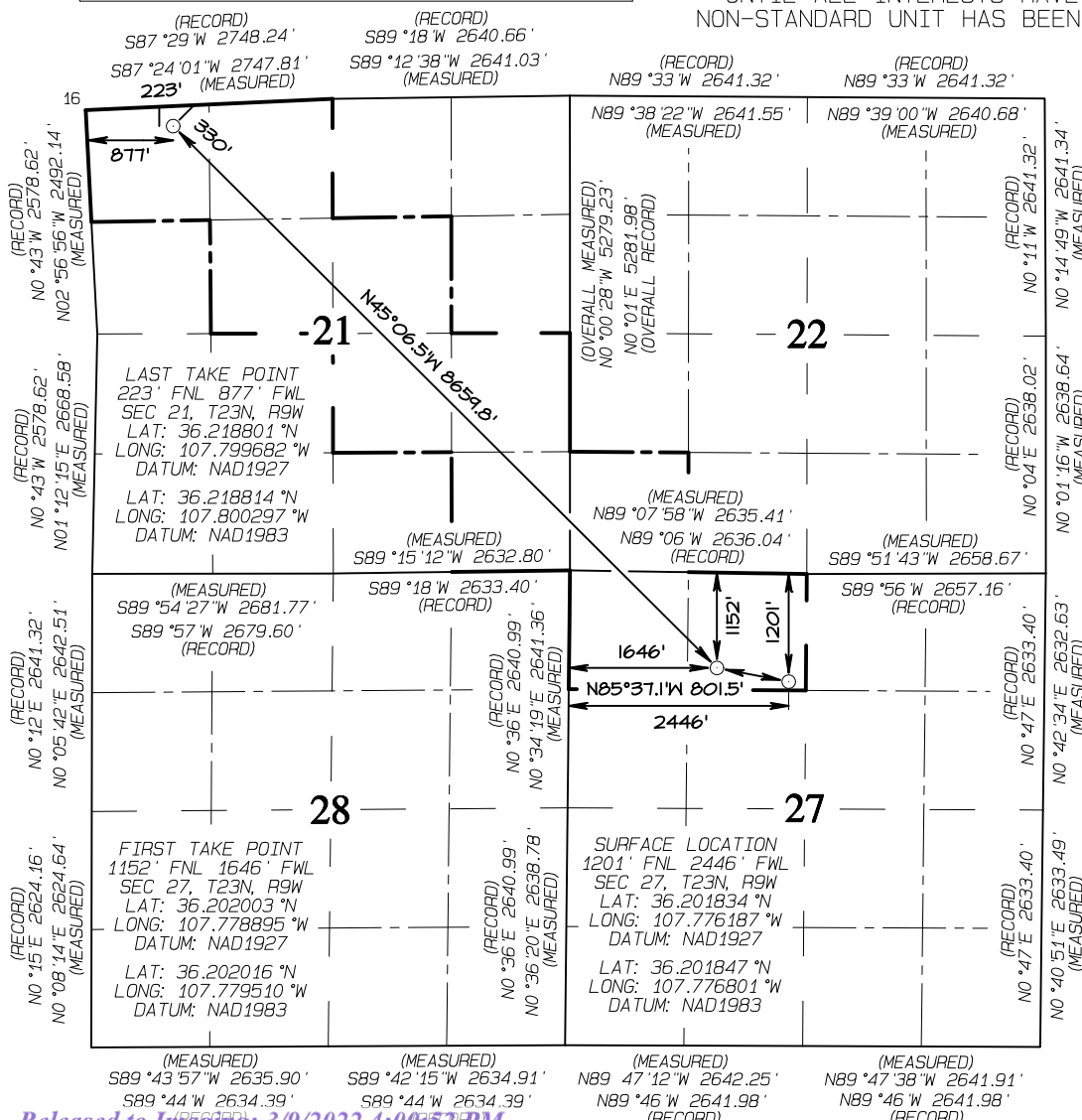
¹⁰ Surface Location

UL or lot no.	Section	Township	Range	Lot Idn	Feet from the	North/South line	Feet from the	East/West line	County
C	27	23N	9W		1201	NORTH	2446	WEST	SAN JUAN

¹¹ Bottom Hole Location If Different From Surface

UL or lot no.	Section	Township	Range	Lot Idn	Feet from the	North/South line	Feet from the	East/West line	County
D	21	23N	9W		223	NORTH	877	WEST	SAN JUAN

¹² Dedicated Acres 400.00	N/2 NW/4 - Section 27 SW/4 SW/4 - Section 22 N/2 NW/4, SE/4 NW/4, SW/4 NE/4 N/2 SE/4, SE/4 SE/4 - Section 21	¹³ Joint or Infill	¹⁴ Consolidation Code	¹⁵ Order No. R-14051 - 12,807.24 Acres
---	---	-------------------------------	----------------------------------	--

NO ALLOWABLE WILL BE ASSIGNED TO THIS COMPLETION
UNTIL ALL INTERESTS HAVE BEEN CONSOLIDATED OR A
NON-STANDARD UNIT HAS BEEN APPROVED BY THE DIVISION¹⁷ OPERATOR CERTIFICATION

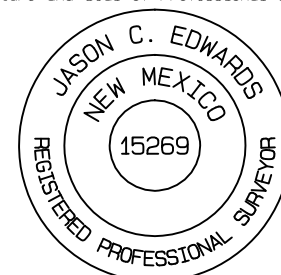
I hereby certify that the information contained herein is true and complete to the best of my knowledge and belief, and that this organization either owns a working interest or unleased mineral interest in the land including the proposed bottom-hole location or has a right to drill this well at this location pursuant to a contract with an owner of such a mineral or working interest, or to a voluntary pooling agreement or a compulsory pooling order heretofore entered by the division.

Signature Heather Huntington 1/13/22
DatePrinted Name
Heather HuntingtonE-mail Address
hhuntington@enduringresources.com¹⁸ SURVEYOR CERTIFICATION

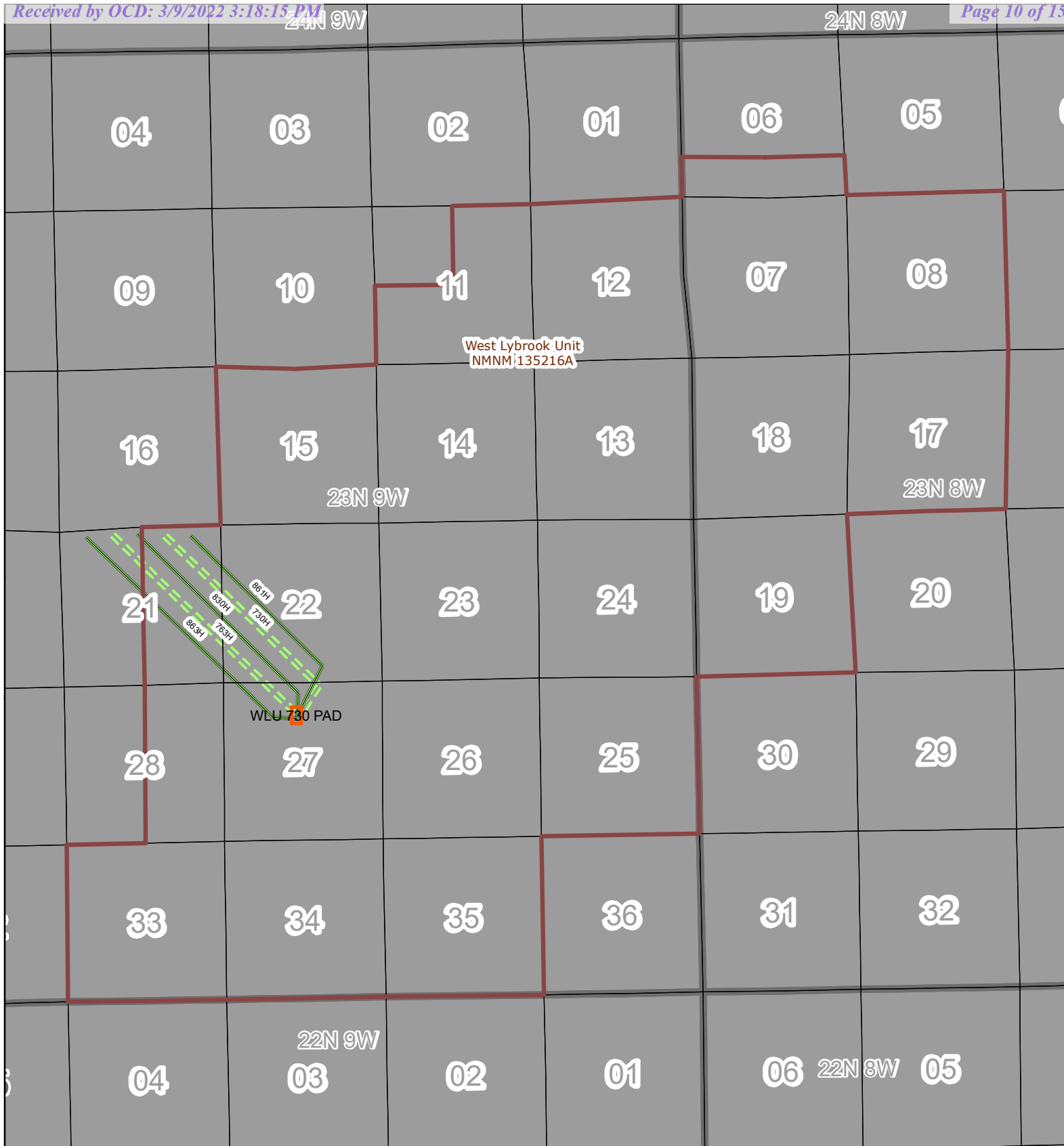
I hereby certify that the well location shown on this plat was plotted from field notes of actual surveys made by me or under my supervision, and that the same is true and correct to the best of my belief.

Date Revised: OCTOBER 26, 2021
Date of Survey: MARCH 10, 2016

Signature and Seal of Professional Surveyor

**JASON C. EDWARDS**

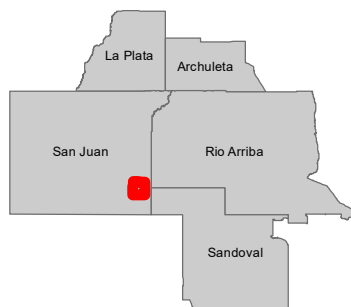
Certificate Number 15269



WLU 730H Lease Plat Map

- 2022, Upper
- 2022, Lower
- PADS
- Unit Boundary
- Section
- Township

Miles

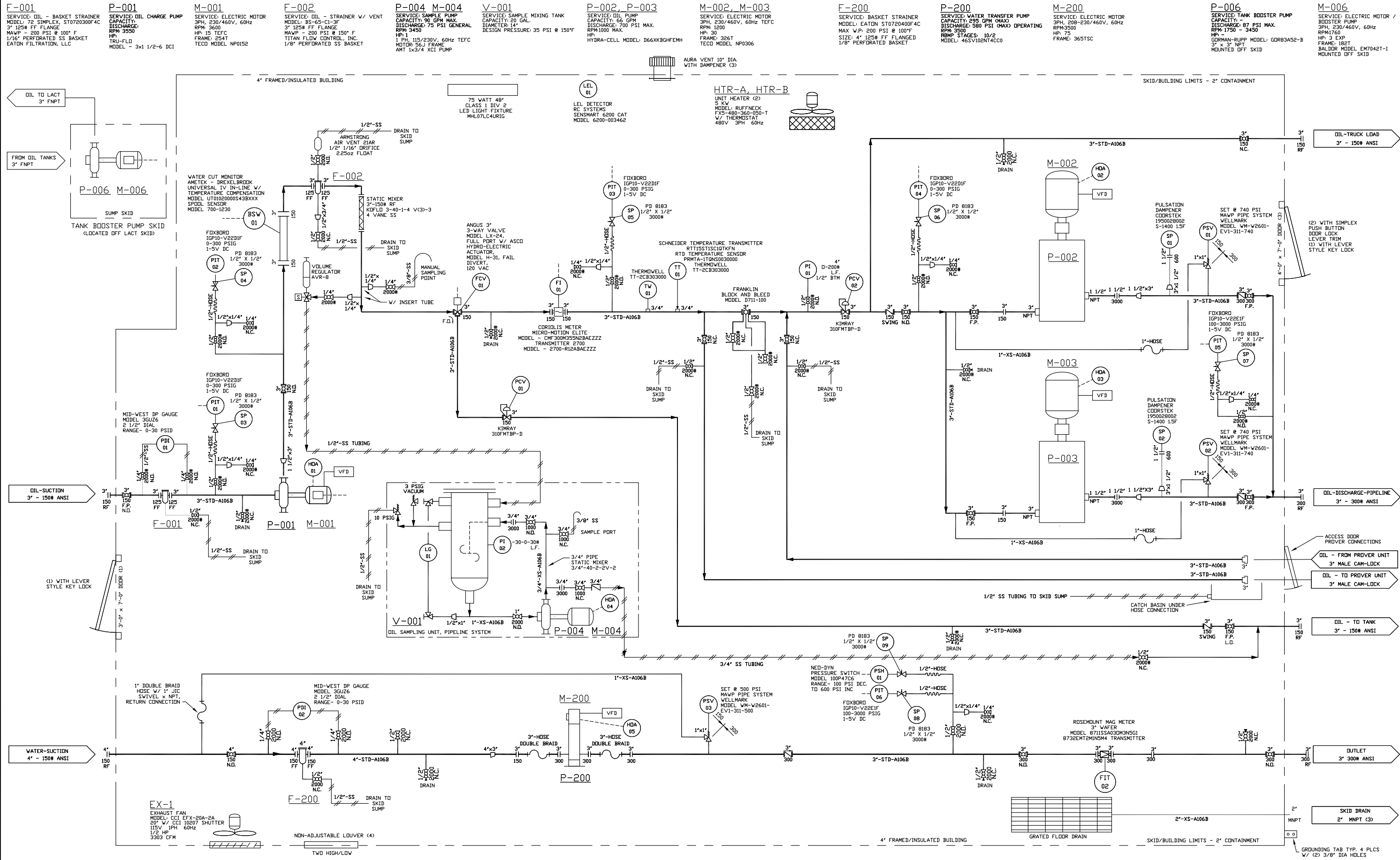


**ENDURING
RESOURCES, LLC**

Data Source Statement:
BLM-FFO, Enduring Resources GIS, ESRI Inc.,
NCE Surveys, USGS

Author: drogers

Date: 1/26/2022



NOTES:
1. DESIGN FLOW RATE OIL - 4000 BBL/DAY.
2. OIL SYSTEM DESIGN PRESSURE 740 PSI @ 100' F. DISCHARGE (FLANGE RATING LIMITED)
3. DESIGN FLOW RATE WATER - 6000 BBL/DAY.
4. WATER SYSTEM DESIGN PRESSURE 500 PSI @ 100' F DISCHARGE (CUSTOMER SPEC).
5. ALL PIPING SECTIONS TO BE HYDROTESTED.
6. 10% OF ALL PIPING WELDS TO BE X-RAY PER B31.3.

REV.	DESCRIPTION	BY	CHKD.
5	AS-BUILT	BWK	
4	ITEM & PART NUMBER ADJUSTMENTS	JKR	
3	ISSUE FOR CONSTRUCTION	JKR	
2	RED-LINE REVISIONS	JKR	
1	PART NUMBER ADJUSTMENTS	JKR	

Drawn By:	JER
Date:	Nov 2018
Checked By:	
Date:	
Approved:	
Date:	



Since 1962
HPI
GAS COMPRESSION



PS
PUMPS & SERVICE

3440 Morning Star Drive, Farmington, NM 87401 (505) 327-0422

Drawing Name:	P & ID	4000 BPD
Project:	ENDURING 4000 LACT UNIT	
Scale:	NTS	
Drawing No.:	2787-01	
Rev.	5	



From: [Mark Lokshin](#)
To: [Heather Huntington](#)
Subject: FW: Permission from Whiptail LACT unit on W Lybrook Unit 730H
Date: Wednesday, January 26, 2022 2:01:07 PM

From: Andy Pickle <andy.pickle@whiptailmidstream.com>
Sent: Wednesday, January 26, 2022 2:00 PM
To: Mark Lokshin <MLokshin@enduringresources.com>
Subject: RE: Permission from Whiptail LACT unit on W Lybrook Unit 730H

Mark,

We approve the use of the Pipeline Transfer LACT equipment, on the W Lybrook Unit 730 well pad, to transfer product from the wells below to Whiptail Midstream, LLC's pipeline system.

WELLS TO BE SERVED BY PIPELINE LACT UNIT:

- W LYBROOK UNIT 730H/ API # 30-045-35843/ UNIT C Sec. 27, T23N, R9W, NMPM
- W LYBROOK UNIT 763H/ API # 30-045-38200/ UNIT C Sec. 27, T23N, R9W, NMPM
- W LYBROOK UNIT 830H/ API # 30-045-35814/ UNIT C Sec. 27, T23N, R9W, NMPM
- W LYBROOK UNIT 861H/ API # 30-045-35844/ UNIT C Sec. 27, T23N, R9W, NMPM
- W LYBROOK UNIT 863H/ API # 30-045-38189/ UNIT C Sec. 27, T23N, R9W, NMPM

Thank you,

[Andy Pickle](#)

Whiptail Midstream

O: (918) 289-2209

M: (580) 402-4881

andy.pickle@whiptailmidstream.com



[From receipt to delivery, the midstream partner you count on.](#)

From: Mark Lokshin <MLokshin@enduringresources.com>
Sent: Wednesday, January 26, 2022 2:38 PM
To: Andy Pickle <andy.pickle@whiptailmidstream.com>
Subject: FW: Permission from Whiptail LACT unit on W Lybrook Unit 730H

Andy

Please see below.

Thanks

Mark

From: Heather Huntington <HHuntington@enduringresources.com>

Sent: Wednesday, January 26, 2022 1:22 PM

To: Mark Lokshin <MLokshin@enduringresources.com>

Subject: Permission from Whiptail LACT unit on W Lybrook Unit 730H

Good Afternoon Mark,

Will you please reach out to Whiptail for approval for the LACT unit we plan on using on the W Lybrook Unit 730H, see description below?

As part of Enduring Resources IV, LLC's (Enduring) W Lybrook Pad Pipeline Transfer LACT Unit C-106 LACT application to the NMOCD Aztec office, Enduring needs an approval from the transporter which in this case is Whiptail. Custody transfer will occur at two locations: the 2-9 Central Delivery Point or the Trunk 1 Transfer. A Coriolis meter is installed at each custody transfer point that routes oil to Whiptail's pipeline. The Pipeline Transfer LACT equipment for the below listed wells will be located on Enduring's W Lybrook Unit 730H pad and will be utilized for sales oil royalty distribution. LACT will be proved per regulatory requirements.

W LYBROOK UNIT 730H/763H/830H/861H/863H PIPELINE LACT UNIT:

WELLS TO BE SERVED BY PIPELINE LACT UNIT:

- W LYBROOK UNIT 730H/ API # 30-045-35843/ UNIT C Sec. 27, T23N, R9W, NMPM
- W LYBROOK UNIT 763H/ API # 30-045-38200/ UNIT C Sec. 27, T23N, R9W, NMPM
- W LYBROOK UNIT 830H/ API # 30-045-35814/ UNIT C Sec. 27, T23N, R9W, NMPM
- W LYBROOK UNIT 861H/ API # 30-045-35844/ UNIT C Sec. 27, T23N, R9W, NMPM
- W LYBROOK UNIT 863H/ API # 30-045-38189/ UNIT C Sec. 27, T23N, R9W, NMPM

Heather Huntington

Enduring Resources Permitting Technician

505-636-9751

District I
1625 N. French Dr., Hobbs, NM 88240
Phone:(575) 393-6161 Fax:(575) 393-0720

District II
811 S. First St., Artesia, NM 88210
Phone:(575) 748-1283 Fax:(575) 748-9720

District III
1000 Rio Brazos Rd., Aztec, NM 87410
Phone:(505) 334-6178 Fax:(505) 334-6170

District IV
1220 S. St Francis Dr., Santa Fe, NM 87505
Phone:(505) 476-3470 Fax:(505) 476-3462

State of New Mexico
Energy, Minerals and Natural Resources
Oil Conservation Division
1220 S. St Francis Dr.
Santa Fe, NM 87505

CONDITIONS

Action 88967

CONDITIONS

Operator: ENDURING RESOURCES, LLC 6300 S Syracuse Way, Suite 525 Centennial, CO 80111	OGRID: 372286
	Action Number: 88967
	Action Type: [C-106] NOI Utilize ACTE (C-106)

CONDITIONS

Created By	Condition	Condition Date
dmcclure	Operation of the equipment shall be performed in compliance with 19.15.18.15 NMAC.	3/9/2022