

Office
 District I – (575) 393-6161
 1625 N. French Dr., Hobbs, NM 88240
 District II – (575) 748-1283
 811 S. First St., Artesia, NM 88210
 District III – (505) 334-6178
 1000 Rio Brazos Rd., Aztec, NM 87410
 District IV – (505) 476-3460
 1220 S. St. Francis Dr., Santa Fe, NM
 87505

State of New Mexico
 Energy, Minerals and Natural Resources

Form C-103
 Revised July 18, 2013

OIL CONSERVATION DIVISION
 1220 South St. Francis Dr.
 Santa Fe, NM 87505

WELL API NO. 30-025-37107
5. Indicate Type of Lease STATE <input checked="" type="checkbox"/> FEE <input type="checkbox"/>
6. State Oil & Gas Lease No. VO-5825
7. Lease Name or Unit Agreement Name McBride BEH State Com
8. Well Number 1
9. OGRID Number 7377
10. Pool name or Wildcat X-4 Ranch; Morrow

SUNDRY NOTICES AND REPORTS ON WELLS (DO NOT USE THIS FORM FOR PROPOSALS TO DRILL OR TO DEEPEN OR PLUG BACK TO A DIFFERENT RESERVOIR. USE "APPLICATION FOR PERMIT" (FORM C-101) FOR SUCH PROPOSALS.)	
1. Type of Well: Oil Well <input type="checkbox"/> Gas Well <input checked="" type="checkbox"/> Other	
2. Name of Operator EOG Resources, Inc.	
3. Address of Operator 104 South Fourth Street, Artesia, NM 88210	
4. Well Location Unit Letter <u>E</u> : <u>1980</u> feet from the <u>North</u> line and <u>660</u> feet from the <u>West</u> line Section <u>4</u> Township <u>10S</u> Range <u>34E</u> NMPM Lea County	
11. Elevation (Show whether DR, RKB, RT, GR, etc.) 4249' GR	

12. Check Appropriate Box to Indicate Nature of Notice, Report or Other Data

NOTICE OF INTENTION TO:

PERFORM REMEDIAL WORK ☐ PLUG AND ABANDON ☒
 TEMPORARILY ABANDON ☐ CHANGE PLANS ☐
 PULL OR ALTER CASING ☐ MULTIPLE COMPL ☐
 DOWNHOLE COMMINGLE ☐
 CLOSED-LOOP SYSTEM ☐
 OTHER: ☐

SUBSEQUENT REPORT OF:

REMEDIAL WORK ☐ ALTERING CASING ☐
 COMMENCE DRILLING OPNS. ☐ P AND A ☐
 CASING/CEMENT JOB ☐
 OTHER: ☐

13. Describe proposed or completed operations. (Clearly state all pertinent details, and give pertinent dates, including estimated date of starting any proposed work). SEE RULE 19.15.7.14 NMAC. For Multiple Completions: Attach wellbore diagram of proposed completion or recompletion.

EOG Resources, Inc. plans to plug and abandon this well as follows:

- MIRU all safety equipment as needed. NU BOP. POOH with production equipment.
- Set a CIBP at 12,239'. Pressure test. Spot 25 sx Class "H" cement on top of CIBP to 11,986'. WOC and tag. This will cover Morrow perfs and top.
- Spot a 25 sx Class "H" cement plug from 11,619'-11,393'. This will cover Atoka top.
- Spot a 25 sx Class "H" cement plug from 9092'-8866'. This will cover Wolfcamp top.
- Spot a 25 sx Class "H" cement plug from 7843'-7617'. This will cover Abo top.
- Perforate at 5528'. Attempt injection rate. Spot a 25 sx Class "C" cement plug from 5528'-5276'. This will cover Glorieta top.
- Perforate at 4200'. Attempt injection rate. Spot a 25 sx Class "C" cement plug from 4200'-3948'. WOC and tag. This will cover casing shoe and San Andres top.
- Perforate at 2828'. Attempt injection rate. Squeeze with 243 sx Class "C" cement from 2828'-2026'. WOC and tag. This will cover Yates and Rustler tops.
- Perforate at 472'. Attempt injection rate. Squeeze with 143 sx Class "C" cement from 472' and circulate up to surface. Verify cement at surface. Back fill as needed.
- Cut off wellhead and install dry hole marker. Clean location as per regulated.

Wellbore schematics attached

LPC Area Below ground marker send pics before backfilling hole

Spud Date:

Rig Release Date:

SEE ATTACHED CONDITIONS
OF APPROVAL

I hereby certify that the information above is true and complete to the best of my knowledge and belief.

SIGNATURE Tina Huerta TITLE Regulatory Specialist DATE February 18, 2022

Type or print name Tina Huerta E-mail address: tina.huerta@eogresources.com PHONE: 575-748-4168

For State Use Only

APPROVED BY: Kerry Fortner TITLE Compliance Officer A DATE 3/11/22
 Conditions of Approval (if any)

575-263-6633

McBride BEH State Com 1 Current

Sec-TWN-RNG: 4-10S-34E
FOOTAGES: 1980' FNL & 660' FWLAPI: 30-025-37107
GL: 4249
KB:

CASING DETAIL

#	HOLE SIZE	SIZE	WGHT	GRADE	Top	Bottom	Sx Cmt	Circ/TOC	TOC Method
A	17 1/2	13 3/8			0	422	440	Circ	
B	12 1/4	9 5/8	36 & 40	J-55	0	4,150	1450	Circ	
C	8 3/4	5 1/2	17	L-80/J-55/P-110	0	12,433	2420	3800	Calc

FORMATION TOPS

	Formation	Top		Formation	Top
	Rustler	2077		Abo	7793
	Yates	2778		Wolfcamp	9042
	San Andres	4028		Atoka	11569
	Glorieta	5478		Morrow	12043

TUBING DETAIL

#	Joints	Description	Length	OD	ID	Grade	Wt (lb/ft):	Top (ftKB):	Btm (ftKB):
		2 7/8 tbg & pkr @ 12013							

Perforation Detail

	Formation	Top	Bottom	Treatment
A	Morrow	12,289	12,312	2000 gals 7 1/2% Morrow acid w/150 balls. Frac w/46000 gal 40# Medallian 40Q foam w/46000# 20/40 Sinterball prop

Prepared by: NF 2/9/22

PBSD: 12,395 MD
TD: 12,434 MD

Morrow perms 12289-12312

McBride BEH State Com 1 Proposed

Plug 8: Perf @ 472. 0-472. WOC & tag. Verify @ surface. Csg shoe + Surface plug

Plug 7: Perf @ 2828. 2026-2828. WOC & tag. Yates top + Rustler top

Plug 6: Perf @ 4200. 3948-4200. WOC & tag. Csg shoe + San Andres top

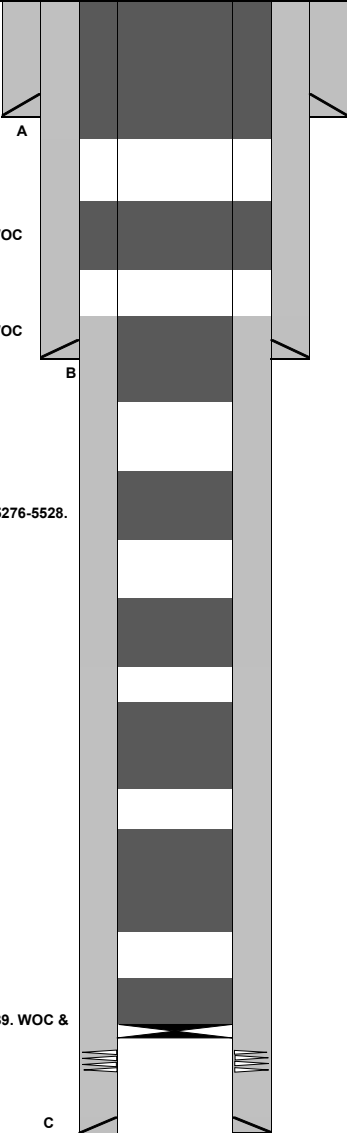
Plug 5: Perf @ 5528. Attempt Inj. 5276-5528. Glorieta top

Plug 4: 7617-7843. Abo top

Plug 3: 8866-9092. Wolfcamp top

Plug 2: 11393-11619. Atoka top

Plug 1: CIBP @ 12239. 11986-12239. WOC & tag. Morrow perfs + Morrow top
Morrow perfs 12289-12312



PBTD: 12,395 MD
TD: 12,434 MD

Sec-TWN-RNG: 4-10S-34E
FOOTAGES: 1980' FNL & 660' FWL

API: 30-025-37107
GL: 4249
KB:

CASING DETAIL

#	HOLE SIZE	SIZE	WGHT	GRADE	Top	Bottom	Sx Cmt	Circ/TOC	TOC Method
A	17 1/2	13 3/8			0	422	440	Circ	
B	12 1/4	9 5/8	36 & 40	J-55	0	4,150	1450	Circ	
C	8 3/4	5 1/2	17	L-80/J-55/P-110	0	12,433		3800	Calc

FORMATION TOPS

	Formation	Top		Formation	Top
	Rustler	2077		Abo	7793
	Yates	2778		Wolfcamp	9042
	San Andres	4028		Atoka	11569
	Glorieta	5478		Morrow	12043

TUBING DETAIL

#	Joints	Description	Length	OD	ID	Grade	Wt (lb/ft)	Top (ftKB)	Btm (ftKB)
		2 7/8 tbg & pkr @ 12013							

#	sx	Class	Top	Bottom	Δ	Notes	Tag
1	28	H	11986	12239	253	CIBP @ 12239. Pressure test. Spot 25sx. WOC & tag. Morrow perfs + Morrow top	Y
2	25	H	11393	11619	226	Spot 25sx. Atoka top	N
3	25	H	8866	9092	226	Spot 25sx. Wolfcamp top	N
4	25	H	7617	7843	226	Spot 25sx. Abo top	N
5	25	C	5276	5528	252	Perf @ 5528 & Attempt inj. Spot 25sx. Glorieta top	Y
6	25	C	3948	4200	252	Perf @ 4200. Attempt Inj. Spot 25sx. WOC & tag. Casing shoe + San Andres top	Y
7	243	C	2026	2828	802	Perf @ 2828. Attempt Inj. Sqz 243sx. WOC & tag. Yates top + Rustler top	Y
8	143	C	0	472	472	Perf @ 472. Attempt Inj. Sqz 143sx. WOC & tag. Verify @ surface. Casing shoe + Surface plug	Y

Perforation Detail

	Formation	Top	Bottom		Treatment			
A	Morrow	12,289	12,312		2000 gals 7 1/2% Morrow acid w/150 balls. Frac w/46000 gal 40# Medallian 40Q foam w/46000# 20/40 Sinterball prop			

Prepared by: NF 2/9/22

**CONDITIONS OF APPROVAL
FOR PLUGGING AND ABANDONMENT
OCD - Southern District**

The following is a guide or checklist in preparation of a plugging program, this is not all inclusive and care must be exercised in establishing special plugging programs in unique and unusual cases, Notify NMOCD District Office I (Hobbs) at (575)-263-6633 at least 24 hours before beginning work. After MIRU rig will remain on well until it is plugged to surface. OCD is to be notified before rig down.

Company representative will be on location during plugging procedures.

1. A notice of intent to plug and abandon a wellbore is required to be approved before plugging operations are conducted. A cement evaluation tool is required in order to ensure isolation of producing formations, protection of water and correlative rights. A cement bond log or other accepted cement evaluation tool is to be provided to the division for evaluation if one has not been previously run or if the well did not have cement circulated to surface during the original casing cementing job or subsequent cementing jobs. Insure all bradenheads have been exposed, identified and valves are operational prior to rig up.
2. Closed loop system is to be used for entire plugging operation. Upon completion, contents of steel pits are to be hauled to a permitted disposal location.
3. Trucking companies being used to haul oilfield waste fluids to a disposal - commercial or private- shall have an approved NMOCD C-133 permit. A copy of this permit shall be available in each truck used to haul waste products. It is the responsibility of the operator as well as the contractor, to verify that this permit is in place prior to performing work. Drivers shall be able to produce a copy upon request of an NMOCD Field inspector.
4. Filing a subsequent C-103 will serve as notification that the well has been plugged.
5. A final C-103 shall be filed (and a site inspection by NMOCD Inspector to determine if the location is satisfactorily cleaned, all equipment, electric poles and trash has been removed to Meet NMOCD standards) before bonding can be released.
6. If work has not begun within 1 Year of the approval of this procedure, an extension request must be file stating the reason the well has not been plugged.
7. Squeeze pressures are not to exceed 500 psi, unless approval is given by NMOCD.
8. Produced water will not be used during any part of the plugging operation.
9. Mud laden fluids must be placed between all cement plugs mixed at 25 sacks per 100 bbls of water.
10. All cement plugs will be a minimum of 100' in length or a minimum of 25 sacks of cement, whichever is greater. 50' of calculated cement excess required for inside casing plugs and 100% calculated cement excess required on outside casing plugs.
11. Class 'C' cement will be used above 7500 feet.
12. Class 'H' cement will be used below 7500 feet.
13. A cement plug is required to be set 50' above and 50' below, casing stubs, DV tools, attempted casing cut offs, cement tops outside casing, salt sections and anywhere the casing is perforated, these plugs require a 4 hour WOC and then will be tagged
14. All Casing Shoes Will Be Perforated 50' below shoe depth and Attempted to be Squeezed, cement needs to be 50' above and 50' Below Casing Shoe inside the Production Casing.
16. When setting the top out cement plug in production, intermediate and surface casing, wellbores should remain full at least 30 minutes after plugs are set
17. A CIBP is to be set within 100' of production perforations, capped with 100' of cement, WOC 4 hours and tag.
18. A CIBP with 35' of cement may be used in lieu of the 100' plug if set with a bailer. This plug will be placed within 100' of the top perforation, (WOC 4 hrs and tag).

19. No more than 3000' is allowed between cement plugs in cased hole and 2000' in open hole.
20. Some of the Formations to be isolated with cement plugs are: These plugs to be set to isolate formation tops
- A) Fusselman
 - B) Devonian
 - C) Morrow
 - D) Wolfcamp
 - E) Bone Springs
 - F) Delaware
 - G) Any salt sections
 - H) Abo
 - I) Glorieta
 - J) Yates.
 - K) Potash---(In the R-111-P Area (Potash Mine Area),
A solid cement plug must be set across the salt section. Fluid used to mix the cement shall be saturated with the salts that are common to the section penetrated and in suitable proportions, not more than 3% calcium chloride (by weight of cement) will be considered the desired mixture whenever possible, WOC 4 hours and tag, this plug will be 50' below the bottom and 50' above the top of the Formation.
21. If cement does not exist behind casing strings at recommended formation depths, the casing can be cut and pulled with plugs set at recommended depths. If casing is not pulled, perforations will be shot and cement squeezed behind casing, WOC and tagged. These plugs will be set 50' below formation bottom to 50' above formation top inside the casing.

DRY HOLE MARKER REQUIREMENTS

The operator shall mark the exact location of the plugged and abandoned well with a steel marker not less than four inches in diameter, 3' below ground level with a plate of at least ¼" welded to the top of the casing and the dry hole marker welded on the plate with the following information welded on the dry hole marker:

1. Operator name
2. Lease and Well Number
3. API Number
4. Unit letter
5. Quarter Section (feet from the North, South, East or West)
6. Section, Township and Range
7. Plugging Date
8. County

SPECIAL CASES -----AGRICULTURE OR PRARIE CHICKEN BREEDING AREAS

In these areas, a below ground marker is required with all pertinent information mentioned above on a plate, set 3' below ground level, a picture of the plate will be supplied to NMOCD for record, the exact location of the marker (longitude and latitude by GPS) will be provided to NMOCD (We typically require a current survey to verify the GPS)

SITE REMEDIATION DUE WITHIN ONE YEAR OF WELL PLUGGING COMPLETION

District I
1625 N. French Dr., Hobbs, NM 88240
Phone:(575) 393-6161 Fax:(575) 393-0720
District II
811 S. First St., Artesia, NM 88210
Phone:(575) 748-1283 Fax:(575) 748-9720
District III
1000 Rio Brazos Rd., Aztec, NM 87410
Phone:(505) 334-6178 Fax:(505) 334-6170
District IV
1220 S. St Francis Dr., Santa Fe, NM 87505
Phone:(505) 476-3470 Fax:(505) 476-3462

State of New Mexico
Energy, Minerals and Natural Resources
Oil Conservation Division
1220 S. St Francis Dr.
Santa Fe, NM 87505

COMMENTS

Action 82630

COMMENTS

Operator: EOG RESOURCES INC P.O. Box 2267 Midland, TX 79702	OGRID: 7377
	Action Number: 82630
	Action Type: [C-103] NOI Plug & Abandon (C-103F)

COMMENTS

Created By	Comment	Comment Date
plmartinez	DATA ENTRY PM	3/14/2022

District I

1625 N. French Dr., Hobbs, NM 88240
Phone:(575) 393-6161 Fax:(575) 393-0720

District II

811 S. First St., Artesia, NM 88210
Phone:(575) 748-1283 Fax:(575) 748-9720

District III

1000 Rio Brazos Rd., Aztec, NM 87410
Phone:(505) 334-6178 Fax:(505) 334-6170

District IV

1220 S. St Francis Dr., Santa Fe, NM 87505
Phone:(505) 476-3470 Fax:(505) 476-3462

State of New Mexico
Energy, Minerals and Natural Resources
Oil Conservation Division
1220 S. St Francis Dr.
Santa Fe, NM 87505

CONDITIONS

Action 82630

CONDITIONS

Operator: EOG RESOURCES INC P.O. Box 2267 Midland, TX 79702	OGRID: 7377
	Action Number: 82630
	Action Type: [C-103] NOI Plug & Abandon (C-103F)

CONDITIONS

Created By	Condition	Condition Date
kfortner	See attached conditions of approval	3/11/2022