

Office  
 District I – (575) 393-6161  
 1625 N. French Dr., Hobbs, NM 88240  
 District II – (575) 748-1283  
 811 S. First St., Artesia, NM 88210  
 District III – (505) 334-6178  
 1000 Rio Brazos Rd., Aztec, NM 87410  
 District IV – (505) 476-3460  
 1220 S. St. Francis Dr., Santa Fe, NM  
 87505

State of New Mexico  
 Energy, Minerals and Natural Resources

Form C-103  
 Revised July 18, 2013

OIL CONSERVATION DIVISION  
 1220 South St. Francis Dr.  
 Santa Fe, NM 87505

WELL API NO. 30-025-38169
5. Indicate Type of Lease STATE <input checked="" type="checkbox"/> FEE <input type="checkbox"/>
6. State Oil & Gas Lease No. VO-5714
7. Lease Name or Unit Agreement Name Strait BLN State Com
8. Well Number 5
9. OGRID Number 7377
10. Pool name or Wildcat X-4 Ranch; Atoka

SUNDRY NOTICES AND REPORTS ON WELLS (DO NOT USE THIS FORM FOR PROPOSALS TO DRILL OR TO DEEPEN OR PLUG BACK TO A DIFFERENT RESERVOIR. USE "APPLICATION FOR PERMIT" (FORM C-101) FOR SUCH PROPOSALS.)	
1. Type of Well: Oil Well <input type="checkbox"/> Gas Well <input checked="" type="checkbox"/> Other	
2. Name of Operator EOG Resources, Inc.	
3. Address of Operator 104 South Fourth Street, Artesia, NM 88210	
4. Well Location Unit Letter <u>L</u> : <u>1980</u> feet from the <u>South</u> line and <u>990</u> feet from the <u>West</u> line Section <u>20</u> Township <u>10S</u> Range <u>34E</u> NMPM Lea County	
11. Elevation (Show whether DR, RKB, RT, GR, etc.) 4231'GR	

12. Check Appropriate Box to Indicate Nature of Notice, Report or Other Data

NOTICE OF INTENTION TO:

PERFORM REMEDIAL WORK ☐ PLUG AND ABANDON ☒  
 TEMPORARILY ABANDON ☐ CHANGE PLANS ☐  
 PULL OR ALTER CASING ☐ MULTIPLE COMPL ☐  
 DOWNHOLE COMMINGLE ☐  
 CLOSED-LOOP SYSTEM ☐  
 OTHER: ☐

SUBSEQUENT REPORT OF:

REMEDIAL WORK ☐ ALTERING CASING ☐  
 COMMENCE DRILLING OPNS. ☐ P AND A ☐  
 CASING/CEMENT JOB ☐  
 OTHER: ☐

13. Describe proposed or completed operations. (Clearly state all pertinent details, and give pertinent dates, including estimated date of starting any proposed work). SEE RULE 19.15.7.14 NMAC. For Multiple Completions: Attach wellbore diagram of proposed completion or recompletion.

EOG Resources, Inc. plans to plug and abandon this well as follows:

- MIRU all safety equipment as needed. NU BOP. POOH with production equipment.
- Set a CIBP at 12,036'. Pressure test. Dump bail 4 sx Class "H" cement on top of CIBP to 12,001'. This will cover Morrow top and perfs.
- Set a CIBP at 11,928'. Pressure test. Spot 25 sx Class "H" cement on top to 11,702'. WOC and tag. This will cover Atoka perfs and top.
- Spot a 25 sx Class "H" cement plug from 9866'-9640'. This will cover Penn top.
- Spot a 25 sx Class "H" cement plug from 9151'-8925'. This will cover Wolfcamp top.
- Perforate at 7865'. Attempt injection rate. Squeeze with 59 sx Class "H" cement from 7865'-7684'. WOC and tag. This will cover Abo top.
- Perforate at 5560'. Attempt injection rate. Squeeze with 53 sx Class "C" cement from 5560'-5378'. WOC and tag. This will cover Glorieta top.
- Perforate at 4180'. Attempt injection rate. Squeeze with 56 sx Class "C" cement from 4180'-3996'. WOC and tag. This will cover San Andres top and casing shoe.
- Perforate at 2830'. Attempt injection rate. Squeeze with 40 sx Class "C" cement from 2830'-2698'. WOC and tag. This will cover Yates top.
- Perforate at 2122'. Attempt injection rate. Squeeze with 40 sx Class "C" cement from 2122'-1990'. WOC and tag. This will cover Rustler top.
- Perforate at 478'. Attempt injection/circulation. Squeeze with 145 sx Class "C" cement from 478' and circulate up to surface. Back fill as needed.
- Cut off wellhead and install dry hole marker. Clean location as per regulated.

Wellbore schematics attached **LPC Area Below ground marker send pics before backfilling hole**

Spud Date:

Rig Release Date:

SEE ATTACHED CONDITIONS  
OF APPROVAL

I hereby certify that the information above is true and complete to the best of my knowledge and belief.

SIGNATURE Tina Huerta TITLE Regulatory Specialist DATE February 10, 2022

Type or print name Tina Huerta E-mail address: tina.huerta@eogresources.com PHONE: 575-748-4168

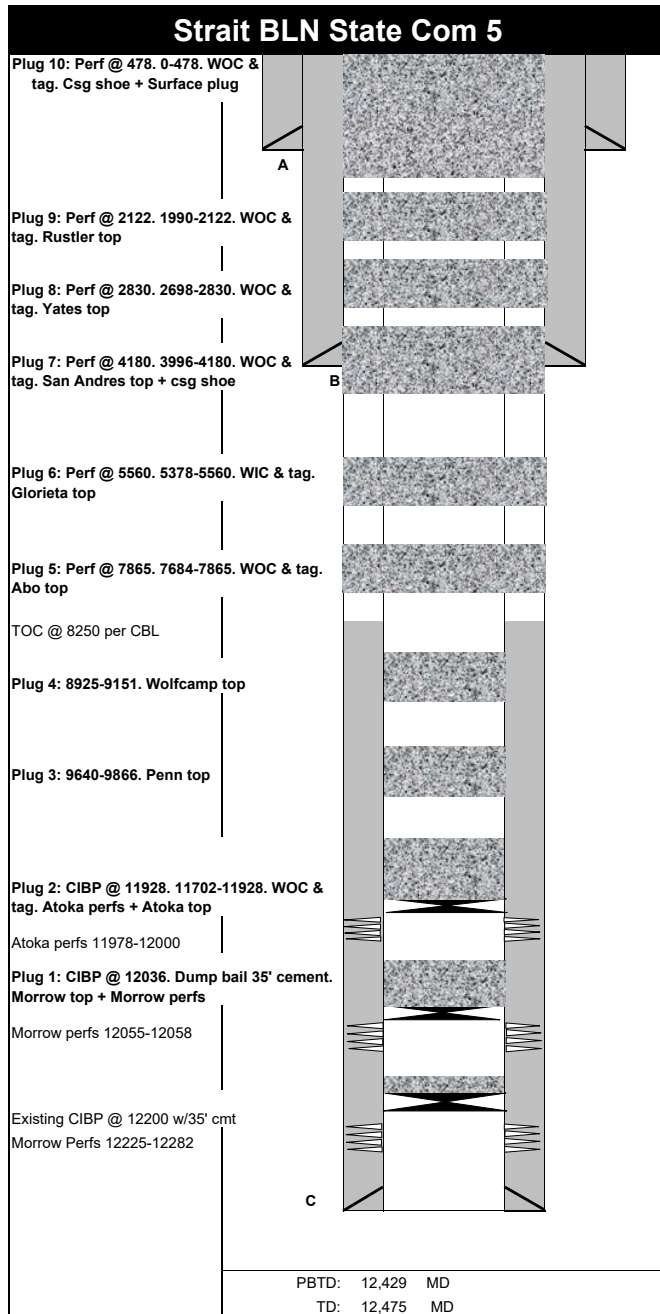
**For State Use Only**

APPROVED BY: Kerry Fortner TITLE Compliance Officer A DATE 3/11/22

Conditions of Approval (if any)

575-263-6633

**Morrow Perfs 12225-12282**



Sec-TWN-RNG: 20-10S-34E		API: 30-025-38169							
FOOTAGES: 1980' FSL & 990' FWL		GL: 4231							
		KB:							
CASING DETAIL									
#	HOLE SIZE	SIZE	WGHT	GRADE	Top	Bottom	Sx Cmt	Circ/TOC	TOC Method
A	17 1/2	13 3/8	48		0	428	405	Circ	
B	12 1/4	9 5/8	36		0	4,130	1400	Circ	
C	8 3/4	5 1/2	17		0	12,475	1100	8250	CBL
FORMATION TOPS									
		Formation	Top			Formation	Top		
		Rustler	2072			Wolfcamp	9101		
		Yates	2780			Penn	9816		
		San Andres	4048			Atoka	11552		
		Glorieta	5510			Morrow	12055		
		Abo	7815						
TUBING DETAIL									
#	Joints	Description	Length	OD	ID	Grade	Wt (lb/ft):	Top (ftKB):	Btm (ftKB):
		2 7/8 tbg & pkr @ 11837							
#	sx	Class	Top	Bottom	Δ	Notes			Tag
1	4	H	12001	12036	35	CIBP @ 12036. Pressure test. Dump bail 4sx. Morrow top + Morrow perfs			N
2	25	H	11702	11928	226	CIBP @ 11928. Pressure test. Spot 25sx. WOC & tag. Atoka perfs + Atoka top			Y
3	25	H	9640	9866	226	Spot 25sx. Penn top			N
4	25	H	8925	9151	226	Spot 25sx. Wolfcamp top			N
5	59	H	7684	7865	181	Perf @ 7865. Attempt Inj. Sqz 59sx. WOC & tag. Abo top			Y
6	53	C	5378	5560	182	Perf @ 5560. Attempt Inj. Sqz 53sx. WOC & tag. Glorieta top			Y
7	56	C	3996	4180	184	Perf @ 4180. Attempt Inj. Sqz 55sx. WOC & tag. San Andres top + Csg shoe			Y
8	40	C	2698	2830	132	Perf @ 2830. Attempt inj. Sqz 40sx. WOC & tag. Yates top			Y
9	40	C	1990	2122	132	Perf @ 2122. Attempt Inj. Sqz 40sx. WOC & tag. Rustler top			Y
10	145	C	0	478	478	Perf @ 478. Attempt inj/circ. Sqz 145sx. WOC & tag. Csg shoe + Surface plug			Y
Perforation Detail									
	Formation	Top	Bottom		Treatment				
A	Morrow	12,225	12,282		Acidize w/5000 gals 7 1/2% Morrow acid w/250 ball sealers. Foam frac 597 bbls fluid, 288 tons CO2, 91000# Versaprop 18/40 sand				
B	Morrow	12,055	12,058		Acidized w/1500 gals 7 1/2% Morrow type acid w/100 SCF Nitrogen. Fraced w/33000 gals 40# CMHPG 65Q foam w/16300#				
C	Atoka	11,978	12,000		20/40 Sinterlitr Prop				
Prepared by: NF 2/1/22									
5/21/08 CIBP @ 12200 w/cement.Perforated Morrow 12055-12058 & Atoka 11978-12000.									

**CONDITIONS OF APPROVAL  
FOR PLUGGING AND ABANDONMENT  
OCD - Southern District**

The following is a guide or checklist in preparation of a plugging program, this is not all inclusive and care must be exercised in establishing special plugging programs in unique and unusual cases, Notify NMOCD District Office I (Hobbs) at **(575)-263-6633** at least 24 hours before beginning work. After MIRU rig will remain on well until it is plugged to surface. OCD is to be notified before rig down.

**Company representative will be on location during plugging procedures.**

1. A notice of intent to plug and abandon a wellbore is required to be approved before plugging operations are conducted. A cement evaluation tool is required in order to ensure isolation of producing formations, protection of water and correlative rights. A cement bond log or other accepted cement evaluation tool is to be provided to the division for evaluation if one has not been previously run or if the well did not have cement circulated to surface during the original casing cementing job or subsequent cementing jobs. Insure all bradenheads have been exposed, identified and valves are operational prior to rig up.
2. Closed loop system is to be used for entire plugging operation. Upon completion, contents of steel pits are to be hauled to a permitted disposal location.
3. Trucking companies being used to haul oilfield waste fluids to a disposal - commercial or private- shall have an approved NMOCD C-133 permit. A copy of this permit shall be available in each truck used to haul waste products. It is the responsibility of the operator as well as the contractor, to verify that this permit is in place prior to performing work. Drivers shall be able to produce a copy upon request of an NMOCD Field inspector.
4. Filing a subsequent C-103 will serve as notification that the well has been plugged.
5. A final C-103 shall be filed (and a site inspection by NMOCD Inspector to determine if the location is satisfactorily cleaned, all equipment, electric poles and trash has been removed to Meet NMOCD standards) before bonding can be released.
6. If work has not begun within 1 Year of the approval of this procedure, an extension request must be file stating the reason the well has not been plugged.
7. Squeeze pressures are not to exceed 500 psi, unless approval is given by NMOCD.
8. Produced water will not be used during any part of the plugging operation.
9. Mud laden fluids must be placed between all cement plugs mixed at 25 sacks per 100 bbls of water.
10. All cement plugs will be a minimum of 100' in length or a minimum of 25 sacks of cement, whichever is greater. 50' of calculated cement excess required for inside casing plugs and 100% calculated cement excess required on outside casing plugs.
11. Class 'C' cement will be used above 7500 feet.
12. Class 'H' cement will be used below 7500 feet.
13. A cement plug is required to be set 50' above and 50' below, casing stubs, DV tools, attempted casing cut offs, cement tops outside casing, salt sections and anywhere the casing is perforated, these plugs require a 4 hour WOC and then will be tagged
14. All Casing Shoes Will Be Perforated 50' below shoe depth and Attempted to be Squeezed, cement needs to be 50' above and 50' Below Casing Shoe inside the Production Casing.
16. When setting the top out cement plug in production, intermediate and surface casing, wellbores should remain full at least 30 minutes after plugs are set
17. A CIBP is to be set within 100' of production perforations, capped with 100' of cement, WOC 4 hours and tag.
18. A CIBP with 35' of cement may be used in lieu of the 100' plug if set with a bailer. This plug will be placed within 100' of the top perforation, (WOC 4 hrs and tag).

19. No more than 3000' is allowed between cement plugs in cased hole and 2000' in open hole.
20. Some of the Formations to be isolated with cement plugs are: These plugs to be set to isolate formation tops
- A) Fusselman
  - B) Devonian
  - C) Morrow
  - D) Wolfcamp
  - E) Bone Springs
  - F) Delaware
  - G) Any salt sections
  - H) Abo
  - I) Glorieta
  - J) Yates.
  - K) Potash---(In the R-111-P Area (Potash Mine Area),  
A solid cement plug must be set across the salt section. Fluid used to mix the cement shall be saturated with the salts that are common to the section penetrated and in suitable proportions, not more than 3% calcium chloride (by weight of cement) will be considered the desired mixture whenever possible, WOC 4 hours and tag, this plug will be 50' below the bottom and 50' above the top of the Formation.
21. If cement does not exist behind casing strings at recommended formation depths, the casing can be cut and pulled with plugs set at recommended depths. If casing is not pulled, perforations will be shot and cement squeezed behind casing, WOC and tagged. These plugs will be set 50' below formation bottom to 50' above formation top inside the casing.

### **DRY HOLE MARKER REQUIREMENTS**

The operator shall mark the exact location of the plugged and abandoned well with a steel marker not less than four inches in diameter, 3' below ground level with a plate of at least ¼" welded to the top of the casing and the dry hole marker welded on the plate with the following information welded on the dry hole marker:

1. Operator name
2. Lease and Well Number
3. API Number
4. Unit letter
5. Quarter Section (feet from the North, South, East or West)
6. Section, Township and Range
7. Plugging Date
8. County

### **SPECIAL CASES -----AGRICULTURE OR PRARIE CHICKEN BREEDING AREAS**

In these areas, a below ground marker is required with all pertinent information mentioned above on a plate, set 3' below ground level, a picture of the plate will be supplied to NMOCD for record, the exact location of the marker (longitude and latitude by GPS) will be provided to NMOCD (We typically require a current survey to verify the GPS)

### **SITE REMEDIATION DUE WITHIN ONE YEAR OF WELL PLUGGING COMPLETION**

**District I**  
1625 N. French Dr., Hobbs, NM 88240  
Phone:(575) 393-6161 Fax:(575) 393-0720  
**District II**  
811 S. First St., Artesia, NM 88210  
Phone:(575) 748-1283 Fax:(575) 748-9720  
**District III**  
1000 Rio Brazos Rd., Aztec, NM 87410  
Phone:(505) 334-6178 Fax:(505) 334-6170  
**District IV**  
1220 S. St Francis Dr., Santa Fe, NM 87505  
Phone:(505) 476-3470 Fax:(505) 476-3462

State of New Mexico  
Energy, Minerals and Natural Resources  
Oil Conservation Division  
1220 S. St Francis Dr.  
Santa Fe, NM 87505

COMMENTS  
  
Action 80688

COMMENTS

Operator: EOG RESOURCES INC P.O. Box 2267 Midland, TX 79702	OGRID: 7377
	Action Number: 80688
	Action Type: [C-103] NOI Plug & Abandon (C-103F)

COMMENTS

Created By	Comment	Comment Date
plmartinez	DATA ENTRY PM	3/14/2022

**District I**  
1625 N. French Dr., Hobbs, NM 88240  
Phone:(575) 393-6161 Fax:(575) 393-0720  
**District II**  
811 S. First St., Artesia, NM 88210  
Phone:(575) 748-1283 Fax:(575) 748-9720  
**District III**  
1000 Rio Brazos Rd., Aztec, NM 87410  
Phone:(505) 334-6178 Fax:(505) 334-6170  
**District IV**  
1220 S. St Francis Dr., Santa Fe, NM 87505  
Phone:(505) 476-3470 Fax:(505) 476-3462

**State of New Mexico**  
**Energy, Minerals and Natural Resources**  
**Oil Conservation Division**  
**1220 S. St Francis Dr.**  
**Santa Fe, NM 87505**

CONDITIONS  
  
Action 80688

**CONDITIONS**

Operator: EOG RESOURCES INC P.O. Box 2267 Midland, TX 79702	OGRID: 7377
	Action Number: 80688
	Action Type: [C-103] NOI Plug & Abandon (C-103F)

**CONDITIONS**

Created By	Condition	Condition Date
kfortner	See attached conditions of approval	3/11/2022